

Phaser®
6280
Letter-size
Color
Laser Printer



Xerox Phaser® 6280 Color Laser Printer Evaluator Guide



About this Guide

This Evaluator Guide introduces you to the Xerox Phaser® 6280 color laser printer, explains its key features and performance advantages, and provides guidance throughout your printer evaluation process.

Contents

Section 1: Introducing the Xerox Phaser 6280 color laser printer

- 3** [Product Overview](#)
- 5** [Phaser 6280 Configurations and Accessories](#)

Section 2: Evaluating Color Laser Printers

- 6** [Overview](#)
- 7** [Evaluate Productivity](#)
- 9** [Evaluate Value](#)
- 10** [Evaluate User Friendliness](#)

Section 3: Configuration Summary, Specifications, Supplies, Support and Information Sources

- 12** [Configuration Summary](#)
- 13** [Specifications](#)
- 14** [Supplies, Options and Extended Service Agreements](#)
- 15** [Support and Information Sources](#)

Section 1: Introducing the Xerox Phaser 6280 color laser printer

Product Overview

Affordable color laser printer that delivers for busy workteams. Spectacular color printing to give your documents the competitive edge, plus solid performance with built-in networking, advanced color technology, and unparalleled quality, all at a surprisingly low price.

Performance that keeps up with your busy office

The Phaser 6280 printer can handle all the work your team can give it, with fast color output and advanced capabilities.

- **Built for speed.** 26 ppm for color printing and 31 ppm for black and white.
- **Fast first page out**, in as little as 10 seconds.
- **Handle complex documents with ease**, thanks to 256 MB of printer memory and a powerful 400 MHz processor.
- **Workteam-ready**, with built-in networking and on-board support for Windows, Mac, and Linux.
- **Flexible expansion** to fit your workload, including an optional hard drive, memory expansion and paper capacity up to 950 sheets.
- **Automatic two-sided printing** with the Phaser 6280DN configuration.
- **Enterprise-ready**, with support for device management tools such as CentreWare print management software.



Low-cost color printing for your business

Add outstanding color to your business documents at an exceptionally low price, with an array of advanced color printing tools and money-saving features.

- **Outstanding**, 600x600x4 dpi photographic quality color at low cost.
- **With Pantone® Color** approved solid-color simulations and Xerox color correction technology, the Phaser 6280 automatically prints outstanding colors or lets you fine-tune for special applications.
- **True Adobe® PostScript® 3™** gives you the brightest, truest colors and graphics possible.
- **Bring out the clarity and detail** in every print with Xerox EA-HG toner. It uses smaller, more uniform toner particles than conventional toner.
- **Choose “Run Black”** to print color documents in black when color cartridges are empty.
- **Better manage your printing costs**; the Phaser 6280 tracks the number of color and black pages you’re printing. It also works with third party software to provide more detailed usage monitoring.
- **Paper-saving feature** automatically skips blank pages in a document.

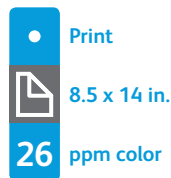
Quality engineering with world-class Xerox service and support

Xerox precision design and engineering deliver worry-free reliable performance.

- **Well-built, durable construction** with a robust 70,000-pages/month duty cycle can meet the needs of even the busiest workteam
- **You're covered with a one-year on-site warranty**, the unbeatable Xerox Total Satisfaction Guarantee, and the best service and support in the industry.
- **Engineered to be quiet.** Low-noise levels make it a great fit for office environments.
- **PrintingScout™** tracks your print jobs and provides immediate print-issue alerts with correction suggestions.
- **Environmentally conscious;** the Phaser 6280 is part of the Xerox Green World Alliance recycling program. Ship your used cartridges to Xerox for free, and we'll take care of recycling.
- **Energy Star Qualified** to save on office utility bills.

Phaser® 6280 Quick Facts

- Print up to 26 ppm color, 31 ppm black-and-white
- 600 x 600 x 4 dpi
- 400 MHz processor
- 256 MB memory expandable to 1,280 MB
- 70,000 pages/month duty cycle
- 400-sheet capacity, expandable to 950 sheets



WxDxH:
15.7 x 19.3 x 18.6 in.
400 x 490 x 473 mm



Phaser 6280 Configurations



Phaser 6280N

The Phaser 6280N comes packed with features to support busy workgroups in small- and medium-sized businesses.

Print Performance:

- Print Speed — Up to 26 ppm color, 31 ppm black-and-white
- First-Page-Out Time — As fast as 10 seconds
- Resolution — Up to 600 x 600 x 4 dpi
- Language Support — True Adobe® PostScript® 3™, PCL® 6/5e emulations

Controller:

- Processor — 400 MHz
- Memory — 256 MB standard (1,280 MB maximum)

Connectivity:

- Network — 10/100Base-TX Ethernet
- Direct Connect — USB 2.0

Paper Handling:

- Paper Capacity: 400 total sheets, standard (950 total sheets, optional)
- Multipurpose Tray — 150 sheets
- Tray 1 — 250 sheets
- Tray 2 (optional) — 550 sheets
- Supported Sizes —
 - Multipurpose Tray — Custom sizes from 3 x 5 in. to 8.5 x 14 in. (76.2 x 127 mm to 216 x 355.6 mm)
 - Tray 1 — Custom sizes from 5.8 x 8.27 in. to 8.5 x 14 in. (148 x 210 mm to 216 x 355.6 mm)
 - Tray 2 — Custom sizes from 5.8 x 8.27 in. to 8.5 x 14 in. (148 x 210 mm to 216 x 355.6 mm)
- Supported Weights —
 - All Trays — 17 – 40 lb. bond to 40-80 lb. cover / 65 – 220 gsm
- Media Types — Plain paper, glossy, envelopes, labels, transparencies, cardstock, postcards

Print Features:

- Standard — N-up, Fit to page, Booklet printing, Skip blank pages, Transparency separators, Run black, Covers/Separators*, Poster printing*, Watermarks*, Overlays*, Banner sheets*, Draft mode*, Secure print**
- Optional — Productivity Kit (includes 40 GB hard drive) enables secure / proof / personal / saved print, Hard disk collation, Extended font / form storage

Security:

- IPv6, 802.1x; SSL/HTTPS; IPsec; IP filtering; SNMPv1, 2, 3; password-protected Admin Mode; Secure Print**

Accounting:

- Billing meters

Reliability:

- Duty Cycle — Up to 70,000 pages per month
- Warranty — One-year on-site, Xerox Total Satisfaction Guarantee

* Accessed via PCL Driver

** Requires optional memory or hard drive



Phaser 6280DN

Includes all capabilities of the Phaser 6280N, with the following upgrade:

Print Performance:

- Automatic two-sided output
 - Supported Weights — 17 – 43 lb. bond / 65 – 163 gsm

Optional

Configure the Phaser 6280 to meet your specific needs with a range of optional accessories.

- 550-sheet feeder
- 550-sheet pedestal stand / feeder
- 512 MB memory upgrades
- Duplex unit adds automatic two-sided printing (Phaser 6280N only)
- Wireless network adapter

Section 2: Evaluating Color Laser Printers

Overview

Based on continuous study of our customers' productivity requirements, Xerox recommends that the following criteria be used when evaluating which color printer to purchase for your office.

Productivity

Can the printer keep up with the demands of your daily and monthly print volumes?

Value

Does the printer's purchase price include advanced color capabilities, powerful features and the flexibility to handle a variety of office print jobs?

User Friendliness

Is the printer simple for your staff to deploy and manage, and will it be easy for your employees to use?

This section examines each of the above evaluation criteria in greater detail, covering the specific features and performance attributes you should look for in a color printer. When the same criteria are used to evaluate every device under consideration, you'll see how the Phaser 6280 laser printer excels against other manufacturers' products.

Evaluate Productivity

Productivity is a critical consideration when evaluating which color printer to purchase for your office. Does the printer deliver the level of performance required to support the demands of a busy workgroup? Does it offer advanced print features that create more office document possibilities? Can the printer be expanded to meet a workgroup's evolving needs, and does it offer the media flexibility to support a variety of jobs?

How the Phaser 6280 exceeds the productivity requirement:

Printing

The Phaser 6280 offers a higher level of performance compared to other printers in this class of product. It delivers a color print speed of up to 26 ppm and a black-and-white print speed of up to 31 ppm — easily keeping pace with your team's printing workload.

For average print jobs of three pages or less, the most important specification is first-page-out-time, and the Phaser 6280 delivers in as few as 10 seconds. Plus, even complex print jobs are processed quickly by the Phaser 6280, which features a 400 MHz processor and 256 MB of memory standard (1,280 MB maximum).

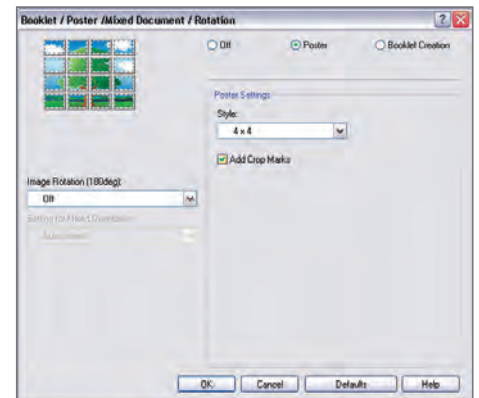
Advanced print features

The Phaser 6280 is packed with advanced print features that you might be surprised to find on a printer that's so value-priced. Expand the print capabilities of your office, with advanced features including:

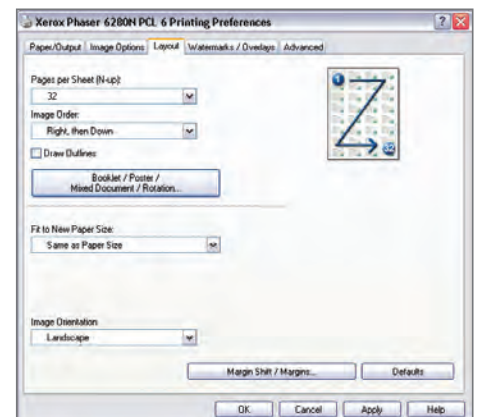
- Booklet printing — Formats printed documents, such as brochures or handouts, for folding into booklets
- Banner sheets¹ — Prints banners using multiple sheets
- Covers/Separators¹ — Prints cover pages for documents on specified media (e.g., colored paper to make print jobs easily sortable)
- N-up printing — Prints multiple pages on each page, which is especially convenient when printing presentations
- Poster printing¹ — Enlarges images by printing onto multiple sheets of paper
- Proof print² — Prints the first set of a multiple-set job, so you can make sure you've got the right print settings before releasing the remaining sets to be printed
- RAM collation² — Collates print jobs consisting of multiple sets of multi-page documents, which eliminates the need to manually collate documents after the job is completed
- Secure print² — Holds the job at the printer until you release it with a specified 4-digit PIN code, which ensures that sensitive or confidential files are not exposed in the output tray
- Skip blank pages — Conserve paper and supplies by skipping blank pages within a document
- Transparency separators — When printing transparencies, include plain paper separator pages with or without the images for the corresponding transparency page
- Watermarks¹ — Adds watermarks to denote "Confidential" or "Draft" documents

¹ Accessed via PCL® driver

² Requires optional memory or hard drive



The Phaser 6280 laser printer delivers advanced printing features that give users more business document possibilities.



Media handling

The Phaser 6280 has a standard total paper capacity of 400 sheets, with the 150-sheet multipurpose tray and the 250-sheet Tray 1. For most offices, a 400-sheet capacity will effectively minimize the number of interventions required to reload paper.

For offices with heavier workloads, adding the optional 550-sheet Tray 2 increases total capacity to 950 sheets. The capacity of Tray 2 is large enough to accept an entire ream of paper without waiting for the tray to run completely empty.



Phaser 6280 laser printer shown with optional 550-sheet feeder.



Phaser 6280 laser printer shown with optional 550-sheet pedestal stand/feeder.

Evaluate Value

In addition to purchase price, a color printer's overall value is based on several factors. Does the printer deliver advanced color capabilities you'd normally expect to find with more expensive products? Does it offer the power and media flexibility your workgroup needs to stay productive in a fast-paced business environment?

How the Phaser 6280 exceeds the value requirement:

Color quality and print resolution

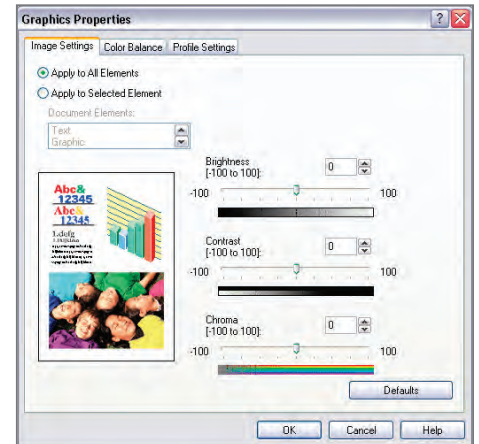
The ability to produce vibrant color and crisp, fine-line detail involves many attributes of a color printer. The Phaser 6280 offers multiple print modes that deliver up to 600 x 600 x 4 dpi resolution, which means 16 shades of color per pixel for a wider color range and more impressive graphics. The 400 MHz controller features 256 MB of RAM, and it works with PCL® 6/5e emulations and true Adobe® PostScript® 3™ print drivers to quickly and accurately process print jobs. The Phaser 6280 features PANTONE® Color approved solid-color simulations and includes a number of color correction settings to give you true-to-life colors and powerful color management capabilities.

Also, the Phaser 6280 features Xerox EA-HG toner, which uses smaller, more uniform particles than conventional toner, bringing out the clarity and detail in every print.

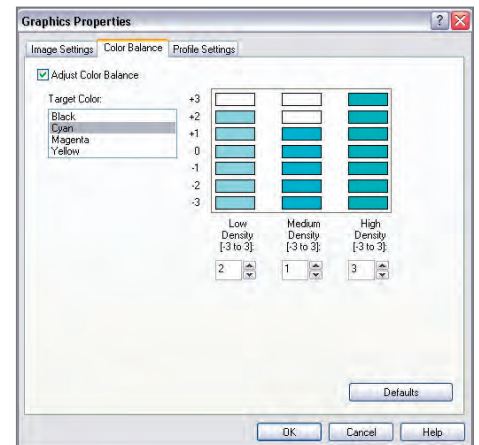
Media support

The Phaser 6280 prints on a wide variety of media, including plain printer paper, recycled paper, transparencies, labels, envelopes, card stock, business cards and glossy. Support for a range of media sizes and weights means users have flexibility when producing important business materials in-house. Phaser 6280 media support includes:

- **Media Size** — The Multipurpose Tray supports the widest range of paper sizes, including custom sizes from 3 x 5 in. up to 8.5 x 14 in. and all standard sizes in between. Tray 1 and the optional Tray 2 support custom sizes between 5.8 x 8.27 in. and 8.5 x 14 in.
- **Media Weight** — The Phaser 6280 supports the same media weights in all three trays: 17 to 40 lb. bond, 40 to 80 lb. cover and 65 to 220 gsm media.



The Phaser 6280 laser printer provides advanced color adjustment technology for more precise results.



Evaluate User Friendliness

Deploying a new printer can be challenging, whether in a large organization or small office. The process includes integrating the printer into your existing network infrastructure and deploying print drivers to users' computers. And because most small businesses have limited access to IT resources, it's important that the color printer you purchase is easy to manage. Evaluate the tools delivered with the printer, and whether they will ease the task of day-to-day management. Lastly, think about ease of use. Is the device simple to operate, and will users quickly feel comfortable using it? Are the user interfaces, both the front panel and print driver, well designed and easy to navigate?

How the Phaser 6280 exceeds the user friendliness requirement:

Installation

Easy installation starts with unpacking the device and ends when it's powered up and ready for use. The Phaser 6280 laser printer is easily removed from its packaging, and the included quick install guide helps install optional accessories, connect the printer to your network and a power source, and power-up the device. The printer will automatically be assigned an IP address and join the network via DHCP (other networking protocols can be set at the front panel), and device settings such as language selection and feature setup are completed either at the front panel or via remote management software like Xerox CentreWare® Internet Services (CentreWare IS) or CentreWare Web.

Driver deployment

Installing print drivers onto users' computers is a fast, easy process. Simply insert the Phaser 6280 installation CD and follow the prompts. Or, users can enter the printer's IP address into any standard web browser and download and install print drivers using the Phaser 6280 CentreWare IS page.

Day-to-day management

Xerox provides a set of tools and utilities to ease the ongoing management and administration of the Phaser 6280. Whether you are managing a single Phaser 6280, or a group of networked printers and MFPs, Xerox makes life easier.

- CentreWare IS — CentreWare IS is an embedded web server that allows users to connect to the Phaser 6280 via any standard web browser to monitor printer status, view the print job queue, manage settings and properties and access troubleshooting and support resources.
- Xerox CentreWare Web — Office environments that have multiple printers and MFPs connected to their networks can install, monitor, configure, track usage and troubleshoot from their computer via one convenient and powerful web application. Additionally, the interoperability of CentreWare Web means it can be used to monitor non-Xerox devices as well.

Bidirectional print drivers

The Phaser 6280 laser printer includes print drivers for Adobe® PostScript® 3™ and PCL® 6/5e emulations. Organized by tabs, the print drivers make job programming easy and intuitive. The most commonly used features are located on the default tab, with advanced features easily accessible when programming more complex jobs. The print drivers also provide bidirectional information such as system status, consumable status, job status, currently loaded paper sizes, installed options and more.



CentreWare IS helps administrators quickly install, configure, troubleshoot and analyze usage of the Phaser 6280 laser printer using any standard web browser.

Everyday Usage

Thoughtful features make the Phaser 6280 laser printer truly office friendly.

- Run Black — Allows the printer to keep printing in black even if it runs out of cyan, yellow or magenta toner.
- Skip blank pages — Automatically ignores blank pages mixed in with multipage print jobs and skips ahead to the next page with content.
- Front-panel toner-level gauges — Conveniently located on the printer's front panel, intuitive indicators let users quickly see how much toner remains.

Supply Replacement

Commonly replaced consumables, such as the toner cartridge and maintenance kit, are easily accessed via the front of the Phaser 6280 laser printer — no need to pull the printer out of its location, or turn it around, when periodic replacement of consumables is required.

Troubleshooting

To avoid downtime and maximize productivity, the Phaser 6280 includes these convenient, proactive troubleshooting tools to help you keep your printer up and running:

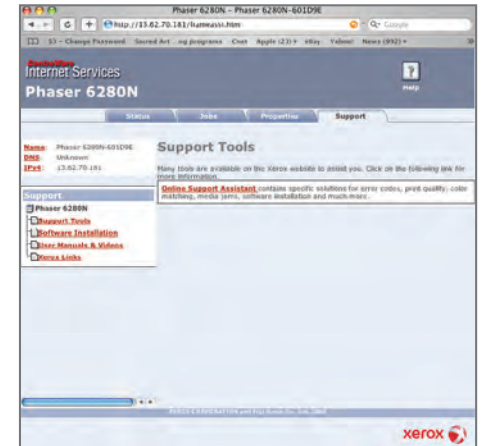
- PrintingScout™ — Saves precious time by tracking print jobs and providing immediate print-issue alerts with instructions on how to resolve problems.
- Online Support Assistant — Access online troubleshooting information from the same Knowledge Base library used by Xerox customer support professionals, directly from CentreWare IS.



Conveniently located toner gauges show current levels at a glance.



The Phaser 6280 laser printer features easy front-panel access to user-replaceable consumables.



CentreWare IS provides easy access to the Xerox online Knowledge Base for fast troubleshooting assistance.

Section 3: Configuration Summary, Specifications, Supplies, Support and Information Sources

Configuration Summary

The following sections provide details about the various Phaser 6280 configurations, available options and supplies, and more helpful information.



	6280N	6280DN
Speed	Up to 26 ppm color / 31 ppm black-and-white (Letter); 25 ppm color / 30 ppm black-and-white (A4)	
Duty Cycle	Up to 70,000 pages / month	
Paper Handling Paper input	Standard	Multipurpose Tray: 150 sheets; Custom sizes: 3 x 5 in. to 8.5 x 14 in. / 76.2 x 127 mm to 216 x 355.6 mm
		Tray 1: 250 sheets; Custom sizes: 5.8 x 8.27 in. to 8.5 x 14 in. / 148 x 210 mm to 216 x 355.6 mm
	Optional	Tray 2: 550 sheets; Custom sizes: 5.8 x 8.27 in. to 8.5 x 14 in. / 148 x 210 mm to 216 x 355.6 mm
Paper output	300 sheets	
Automatic two-sided printing	Optional	Standard
Print First-page-out-time	As fast as 10 seconds	
Resolution (max)	Up to 600 x 600 x 4 dpi	
Processor	400 MHz	
Memory (std / max)	256 MB / 1,280 MB	
Connectivity	USB 2.0, 10/100 Base-TX Ethernet, Optional wireless network adaptor	
Page description languages	PCL® 6, PCL® 5e, Adobe® PostScript® 3™	
Print features	Standard	N-up, Fit to page, Booklet printing, Skip blank pages, Transparency separators, Run black, Covers/Separators*, Poster printing*, Watermarks*, Overlays*, Banner sheets*, Draft mode*
	Optional	Productivity Kit (includes 40 GB hard drive) enables secure / proof / personal / saved print, Hard disk collation, Extended font / form storage
Security	IPv6, 802.1x; SSL/HTTPS; IPsec; IP filtering; SNMPv1, 2, 3; password-protected Admin Mode; Secure Print**	
Warranty	One-year on-site warranty, Xerox Total Satisfaction Guarantee	

* Accessed via PCL Driver

** Requires optional memory or hard drive

Specifications

Specifications	
Device Management	Phaser Installer, CentreWare® IS Embedded Web Server, CentreWare Web, PrintingScout™, Email alerts
Print Driver Support	Apple: Mac OS® version 10.3 and above Linux®: Red Hat®, SUSE™, TurboLinux 10 Desktop Microsoft: Windows® 2000/XP/Vista, Server 2003/2008 UNIX: IBM AIX® 4.3.3, HP-UX® 11.0, Sun Microsystems Solaris™ 8/9/10 Universal: Xerox Global Print Driver, Xerox Mobile Express Driver
Media Handling Supported Sizes	Multipurpose Tray: Custom sizes: 3 x 5 in. to 8.5 x 14 in. / 76.2 x 127 mm to 216 x 355.6 mm Tray 1: Custom sizes: 5.8 x 8.27 in. to 8.5 x 14 in. / 148 x 210 mm to 216 x 355.6 mm Tray 2 (optional): Custom sizes: 5.8 x 8.27 in. to 8.5 x 14 in. / 148 x 210 mm to 216 x 355.6 mm
Supported Weights	All Trays: 17 to 40 lb. bond, 40 to 80 lb. cover (65 to 220 gsm)
Operating Environment	Temperature: <ul style="list-style-type: none"> • Storage: -4° to 104° Fahrenheit (-20° to 40° Celsius) • Operating: 50° to 90° Fahrenheit (10° to 32° Celsius) Relative Humidity: <ul style="list-style-type: none"> • Storage: 5% to 85% • Operating: 5% to 85% Sound Power Levels: <ul style="list-style-type: none"> • Printing: 6.33 B • Standby: 4 B
Electrical	110–127 VAC, 50/60 Hz; 220–240 VAC, 50/60 Hz Power Consumption: <ul style="list-style-type: none"> • Power Save: 4.3 W • Standby: 70 W • Printing: 450 W ENERGY STAR® qualified
Dimensions (Width x Depth x Height)	Phaser 6280N: 15.7 x 19.3 x 18.6 in. (400 x 490 x 473 mm); weight: 54 lbs. (24.5 kg) Phaser 6280DN: 15.7 x 19.3 x 18.6 in. (400 x 490 x 473 mm); weight: 64.5 lbs. (29.25 kg) Optional 550-Sheet Paper Feeder: 14.3 x 15.7 x 3.4 in. (364 x 400 x 86 mm); weight: 17.4 lbs. (7.9 kg)
Certification	FCC Part 15, Class B Listed UL 60950-1/CSA 60950-1-03 CE Mark applicable to Directives 2006/95/EC and 2004/108/EC, Section 508 ADA

Supplies, Options and Extended Service Agreements

Supplies	Part Number	Description	Capacity
	106R01388	Cyan Standard-Capacity Printer Cartridge	Average 2,200 standard pages ¹
	106R01389	Magenta Standard-Capacity Printer Cartridge	Average 2,200 standard pages ¹
	106R01390	Yellow Standard-Capacity Printer Cartridge	Average 2,200 standard pages ¹
	106R01391	Black Standard-Capacity Printer Cartridge	Average 3,000 standard pages ¹
	106R01392	Cyan High-Capacity Printer Cartridge	Average 5,900 standard pages ¹
	106R01393	Magenta High-Capacity Printer Cartridge	Average 5,900 standard pages ¹
	106R01394	Yellow High-Capacity Printer Cartridge	Average 5,900 standard pages ¹
	106R01395	Black High-Capacity Printer Cartridge	Average 7,000 standard pages ¹

¹ Average standard pages. Declared Yield in accordance with ISO/IEC 19798. Yield will vary based on image, area coverage and print mode.

Options	097S03744	550-Sheet Feeder, adjustable up to legal, Phaser 6280
	097S03967	Productivity Kit w/ 40 GB Hard Drive
	097S03635	512MB Phaser Memory
	097S03833	550-sheet pedestal stand/feeder
	097S03746	Duplex Unit: Provides Two-Sided Automatic Printing (N configuration)
	097S03740	Wireless Network Adapter with North American power converter
Extended Service Agreements	E6280SA	Annual On-Site Service Agreement
	E6280S3	2 years additional (total of 3 years)*
	E6280S4	3 years additional (total of 4 years)*

* Available for purchase during first 90 days of product ownership.

Support and Information Sources

Unrivaled Service and Support

Behind every Xerox product is a large network of customer support that's unrivaled in the industry and available when you need it. Xerox service professionals use leading-edge technologies to keep you up and running. They're even linked to the engineers who designed your product, so you can be confident when you choose Xerox. And genuine Xerox supplies are always easily available.

Total Satisfaction Guaranteed

The exclusive Xerox Total Satisfaction Guarantee, recognized as unique in the industry, covers every Phaser® device that has been continuously maintained by Xerox or its authorized representatives under a Xerox express warranty or a Xerox maintenance agreement. You decide when you're satisfied.

Xerox Office Services Support

Asset Management Services

- Asset Optimization and Tracking — Process and tools to optimize an enterprise's office output infrastructure and reduce overall costs.
- Break-Fix Management — Single point of ownership and management for break-fix service for all brands of office output devices
- Supplies Management — Process and tools to procure, monitor and replenish all document related supplies proactively.

Imaging and Output Management Services

- Output Management — Single point of management for office output from all output devices — regardless of manufacturer
- Image Capture and Workflow — Cost-efficient solutions for capturing, managing, retrieving and distributing information into digital repositories.

Support Services

- Technology Procurement and Deployment — A creative and flexible end-to-end print/computer product acquisition solution that uses a single-point-of-contact model, while lowering the total cost of acquisition.
- Help Desk Services — A broad range of enterprise services managed through a single point of contact and delivered through an on-site or off-site model.
- End User Services — Microsoft software implementation, IT project consulting and customer education.
- Access Managed Services

Access Managed Services

- Student and Library Patron Access — Custom designed and implemented customer-managed solutions for student and library patron print-access management.

Additional Information Sources

What's in the Box

- Phaser 6280 printer
- Print Cartridges
 - CMY: 2,200 print capacity*
 - K: 3,000 print capacity*
- Software and Documentation CD (with User Manual, Quick Installation Guide, Registration Card, Warranty Statement)
- Power cord

Phaser 6280 Front Panel:

- The Front Panel provides tools and information pages to help with machine setup, feature selections, operational problems, media feed and supply issues.

On the Web

Visit www.xerox.com/office for:

- Product, supply and support information
- Downloading drivers
- Finding your local Xerox sales representative
- Online documentation

Visit www.xerox.com/office/support for:

- Support and service information, including the same troubleshooting Knowledge Base used by Xerox Customer Support staff to provide the latest technical information on:
 - Application issues
 - Errors
 - Print-quality issues
 - Troubleshooting

* Average standard pages. Declared Yield in accordance with ISO/IEC 19752. Yield will vary based on image, area coverage and media used.

Questions? Comments? Problems?

If for any reason you need to contact your Xerox sales representative, please call 1-877-362-6567, or visit us on the web at www.xerox.com/office.

