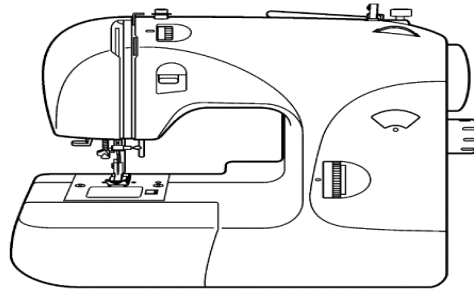


REFER TO IMPORTANT NOTICE BELOW

**PARTS LIST
FOR
Model 118**

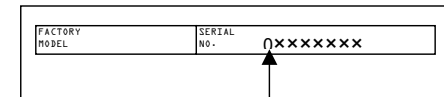


SINGER®
AT HOME WORLDWIDE

IMPORTANT:

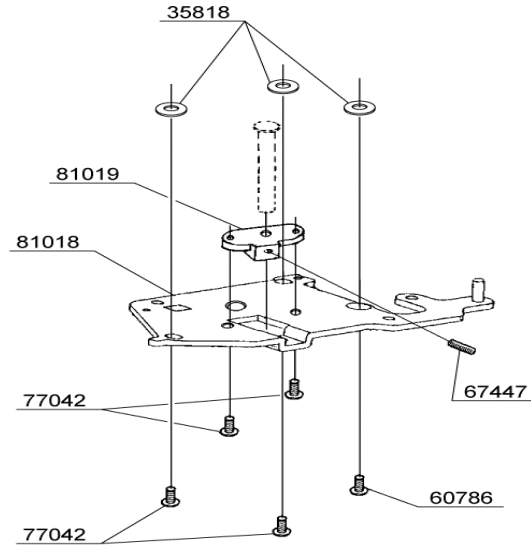
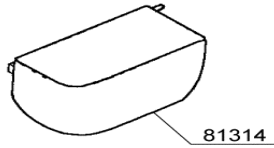
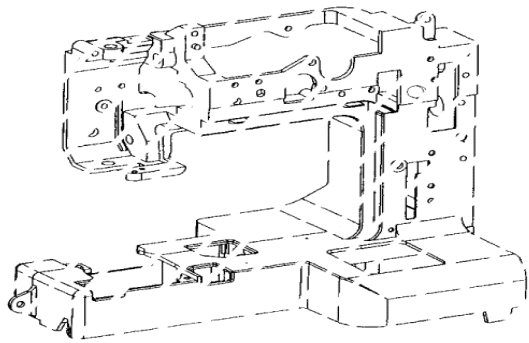
WHEN ORDERING THE PARTS
ALWAYS CHECK THE SERIAL
NUMBER OF THE MACHINE.

FIRST DIGIT OF THE SERIAL
NUMBER MUST MATCH WITH
THE LAST DIGIT OF THE FACTOR
MODEL ABOVE.



FIRST DIGIT

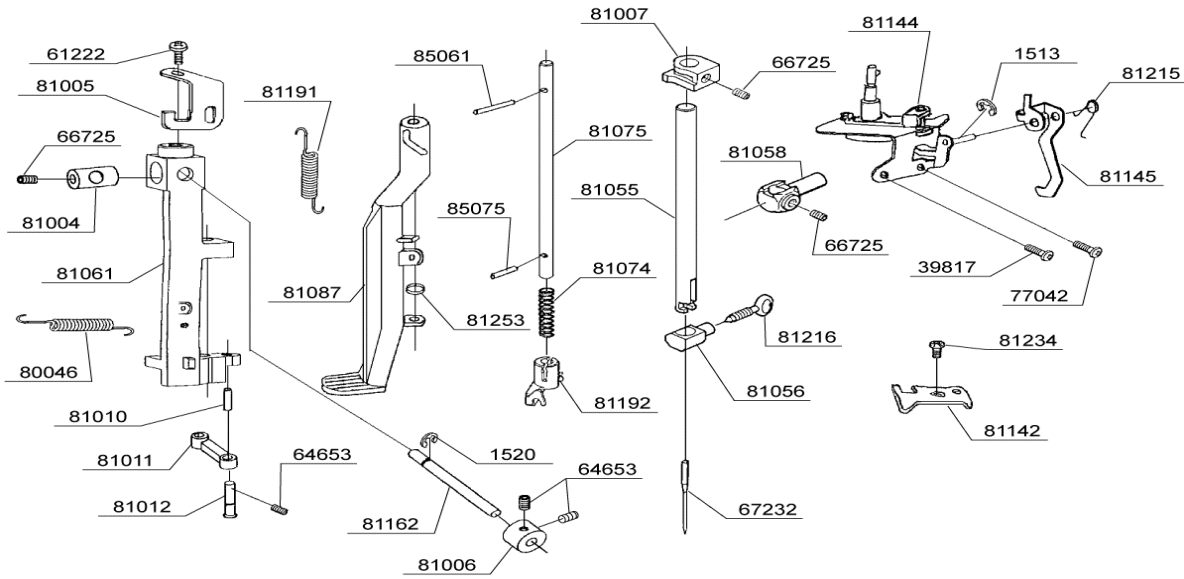
BUYER'S MODEL NO.	118	SECTION	PAGE	REVISION	REMARKS	PART #	DESCRIPTION
BUYER'S MODEL NAME			2			35818	WASHER
FACTORY MODEL	CA11860,CE118S0					60786	M4 SCREW
ORIGINAL ISSUE	March, 2004	SERIAL NO.				67447	M5 SCREW



- 67447 M4 PHILLIPS SCREW
- 81018 SHUTTLE SHAFT PLATE
- 81019 SHUTTLE SHAFT BASE
- 81314 EXTENSION TABLE

BUYER'S MODEL NO.	118	SECTION	PAGE	REVISION	REMARKS	PART #	DESCRIPTION
BUYER'S MODEL NAME			3			1513	E4 CLIP-ON-WASHER
FACTORY MODEL	CA11860,CE118S0					10963	E6 CLIP-ON-WASHER
ORIGINAL ISSUE	March, 2004		SERIAL NO.			43389	WASHER
						43390	WASHER
						43930	SPRING PIN
						64637	WASHER
						66474	M5 SCREW
						66725	M3 SCREW
						67447	M5 SCREW
						73472	COLLAR
						79447	REAR COVER FIXING PLATE
						81008	TAKE-UP LEVER CRANK
						81009	BELT PULLEY
						81057	NEEDLE BAR CRANK
						81062	TAKE-UP LEVER
						81063	CRANK SHAFT
						81064	SHAFT
						81065	BLANCER
						81082	BELT GUIDE PLATE
						81097	BALL BUSHING
						81098	SECURING PLATE
						81099	SPRING GEAR
						81100	COLLAR
						81101	TORSION SPRING
						81102	CLUTCH
						81103	HAND WHEEL SCREW
						81135	MAIN SHAFT
						81232	SCREW
81258	SCREW						
81267	E9 CLIP-ON-WASHER						
81315	HAND WHEEL						
81332	BELT PULLEY						

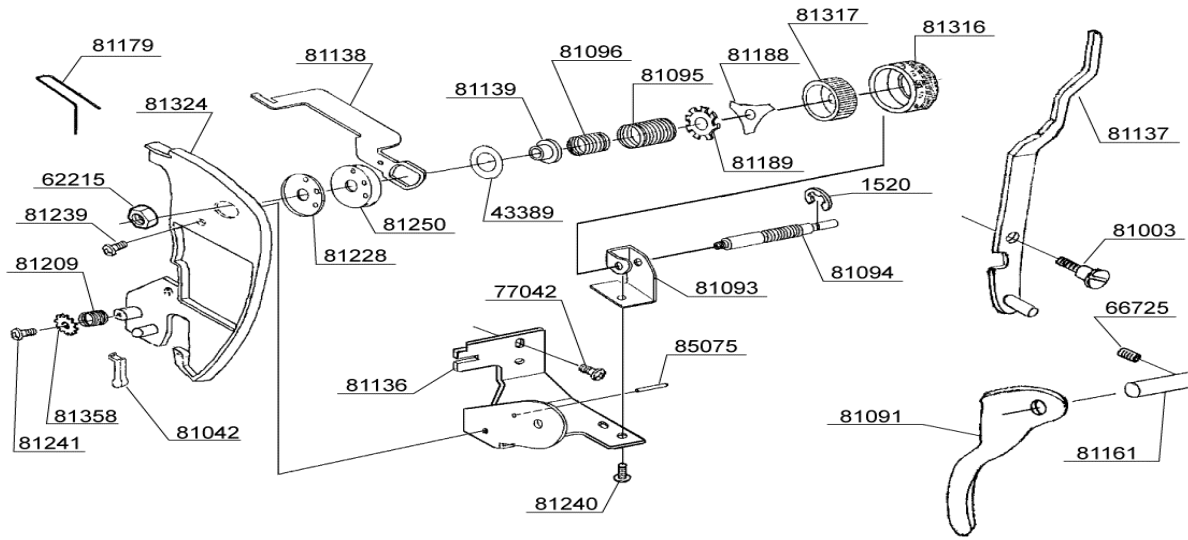
BUYER'S MODEL NO.	118	SECTION	PAGE	REVISION	REMARKS	PART #	DESCRIPTION
BUYER'S MODEL NAME			4			1513	E4 CLIP-ON-WASHER
FACTORY MODEL	CA11860,CE118S0					1520	E3 CLIP-ON-WASHER
ORIGINAL ISSUE	March, 2004		SERIAL NO.			39817	SCREW



1513	E4 CLIP-ON-WASHER
1520	E3 CLIP-ON-WASHER
39817	SCREW
61222	M4 PHILLIPS SCREW
64653	M3 SCREW
66725	M3 SCREW
67232	NEEDLE
77042	M4 PHILLIPS SCREW
80046	EXTENSION SPRING
81004	SUPPORT BUSH
81005	SUPPORT FIXING PLATE
81006	COLLAR
81007	STOPPER
81010	PIN
81011	SUPPORT CONNECTION PLATE
81012	SUPPORT CONNECTION SHAFT
81055	NEEDLE BAR
81056	NEEDLE CLAMP
81058	NEEDLE BAR CLAMP
81061	NEEDLE BAR SUPPORT
81074	COMPRESSION SPRING
81075	THREADER SHAFT SET
81087	LEVER
81142	LIMITING PLATE
81144	BOBBIN WINDER COMPLETE
81145	RATCHET
81162	SUPPORT SHAFT
81191	EXTENSION SPRING
81192	THREADER ASSEMBLY
81215	TORSION SPRING
81216	NEEDLE CLAMP SCREW
81234	M3.5 HEX SCREW
81253	COLLAR
85061	PIN
85075	PIN

BUYER'S MODEL NO.	118	SECTION	PAGE	REVISION	REMARKS	PART #	DESCRIPTION
BUYER'S MODEL NAME			5			1513	E4 CLIP-ON-WASHER
FACTORY MODEL	CA11860,CE118S0					67447	M5 SCREW
ORIGINAL ISSUE	March, 2004		SERIAL NO.			68891	WASHER
<p>The diagram shows an exploded view of a sewing machine shuttle assembly. Key components include: <ul style="list-style-type: none"> 81257: Set screws for the needle plate. 79456: Needle plate. 81024: Shuttle race cover. 79491: Zigzag presser foot. 81013: Idler unit. 81021: Release lever. 81053: Presser bar. 81092: Compression spring. 81133: Presser bar holder. 81134: Presser bar block. 81202: Timing belt. 81256: Screw for shank. 81333: Thread guide. 81334: Shuttle cover spring plate. 81373: M2 screw. 81374: Screw. 76250: Presser bar. 79495: Zigzag presser foot. 1513: E4 clip-on-washer. 68891: Washer. 77035: M4 Phillips screw. 81066: Idler bracket. 67447: M5 screw. </p>						81024	SHUTTLE RACE COVER
						81053	PRESSER BAR
						81066	IDLER BRACKET
						81092	COMPRESSION SPRING
						81133	PRESSER BAR HOLDER
						81134	PRESSER BAR BLOCK
						81202	TIMING BELT
						81256	SCREW FOR SHANK
						81257	SET SCREW
						81333	THREAD GUIDE
						81334	SHUTTLE COVER SPRING PLATE
						81373	M2 SCREW
						81374	SCREW

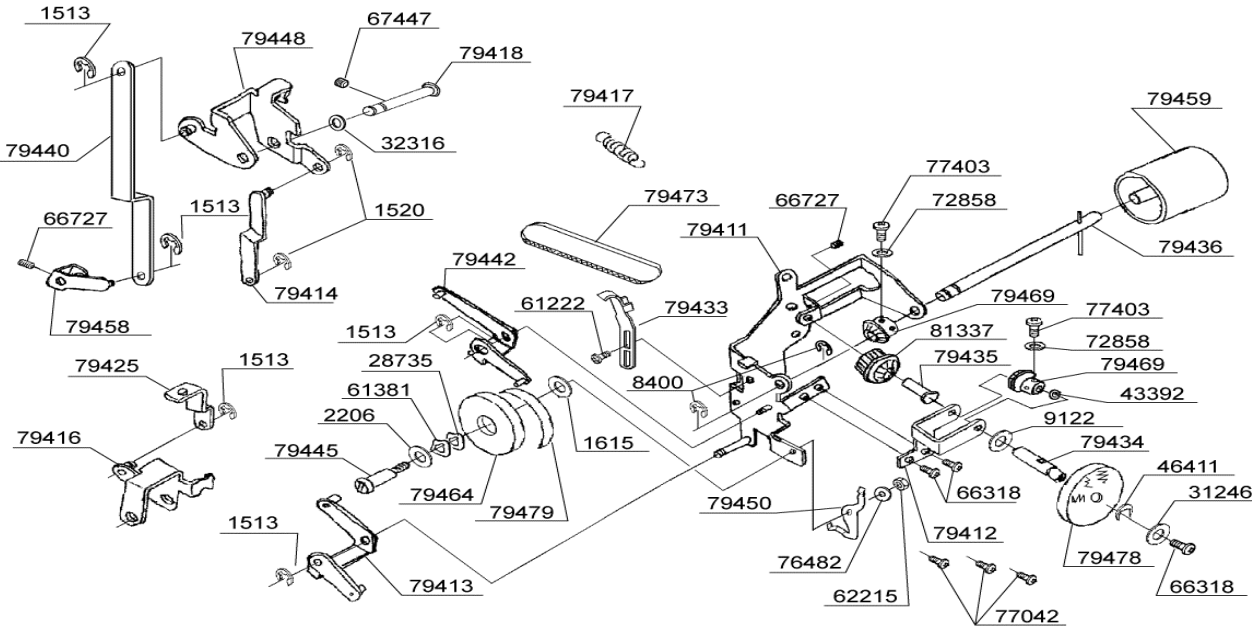
BUYER'S MODEL NO.	118	SECTION	PAGE	REVISION	REMARKS	PART #	DESCRIPTION
BUYER'S MODEL NAME			6			1520	E3 CLIP-ON-WASHER
FACTORY MODEL	CA11860,CE118S0					43389	WASHER
ORIGINAL ISSUE	March, 2004					62215	M4 NUT
						66725	M3 SCREW
						77042	M4 PHILLIPS SCREW
						81003	STUD SCREW
						81042	CHECK SPRING GUIDE
						81091	PRESSER FOOT LIFTER
						81093	TENSION SHAFT FIXING PLATE
						81094	THREAD TENSION SHAFT
						81095	COMPRESSION SPRING
						81096	COMPRESSION SPRING
						81136	THREAD TENSION BASE
						81137	TENSION RELEASE LEVER
						81138	TENSION RELEASE LEVER
						81139	TENSION SPRING BASE
						81161	SHAFT
						81179	THREAD GUIDE PLATE
						81188	GUIDE PLATE
						81189	SLIDE SCREW
						81209	CHECK SPRING
						81228	TENSION PLATE
						81239	M3.5 SCREW
						81240	M3 SCREW
						81241	M3 SCREW
						81250	TENSION PLATE
						81316	DIAL
						81317	DIAL RING
						81324	THREAD GUIDE PLATE
						81358	WASHER
						85075	PIN



BUYER'S MODEL NO.	118	SECTION	PAGE	REVISION	REMARKS	PART #	DESCRIPTION
BUYER'S MODEL NAME			7			10963	E6 CLIP-ON-WASHER
FACTORY MODEL	CA11860,CE118S0					43393	WASHER
ORIGINAL ISSUE	March, 2004	SERIAL NO.				56858	M2 PHILLIPS SCREW
						61221	M4 PHILLIPS SCREW
						64637	WASHER
						66725	M4 SCREW
						67251	M3.5 SCREW
						67444	COLLAR
						67447	M5 SCREW
						76281	BOBBIN
						81014	SHUTTLE RACE
						81015	WASHER
						81016	SHUTTLE RACE SHAFT
						81017	BOBBIN CASE
						81025	BOBBIN CASE STOPPER
						81026	SPRING PLATE
						81027	BOBBIN CASE LIMITING PLATE
						81028	BALL BUSHING
						81029	BEVEL GEAR
						81030	FEED-DOG LIFTING CAM
						81031	LOWER SHAFT BELT GEAR
						81068	LOWER SHAFT
						81105	SECURING PLATE
81125	WASHER						
81185	FEED-DOG FEEDING CAM						
81232	SCREW						
85075	KNOCK PIN						

BUYER'S MODEL NO.	118	SECTION	PAGE	REVISION	REMARKS	PART #	DESCRIPTION
BUYER'S MODEL NAME			8			1513	E4 CLIP-ON-WASHER
FACTORY MODEL	CA11860,CE118S0					59221	WASHER
ORIGINAL ISSUE	March, 2004	SERIAL NO.				66474	M5 SCREW
						66725	M4 SCREW
						76111	HEADED PIN
						76197	HEADED PIN
						81034	FEED DOGS
						81035	FEED DOG BASE
						81036	ADJUSTING SCREW
						81037	SHAFT
						81038	FEED REGULATING BRACKET
						81039	FEED REGULATING SHAFT
						81040	FEED REGULATING ARM
						81041	FIXING PLATE
						81043	SPRING
						81044	FEED REGULATING LINK L.
						81045	PIN
						81046	FEED REGULATING LINK R.
						81047	BALL BUSHING
						81049	TORSION SPRING
						81054	COLLAR
						81069	HORIZONTAL FEED SHAFT
						81105	SECURING PLATE
81232	SCREW						
81244	SCREW						
81254	SCREW						
85075	KNOCK PIN						

BUYER'S MODEL NO.	118	SECTION	PAGE	REVISION	REMARKS	PART #	DESCRIPTION
BUYER'S MODEL NAME			9			1513	E4 CLIP-ON-WASHER
FACTORY MODEL	CA11860,CE118S0					1520	E3 CLIP-ON-WASHER
ORIGINAL ISSUE	March, 2004	SERIAL NO.				1615	WASHER



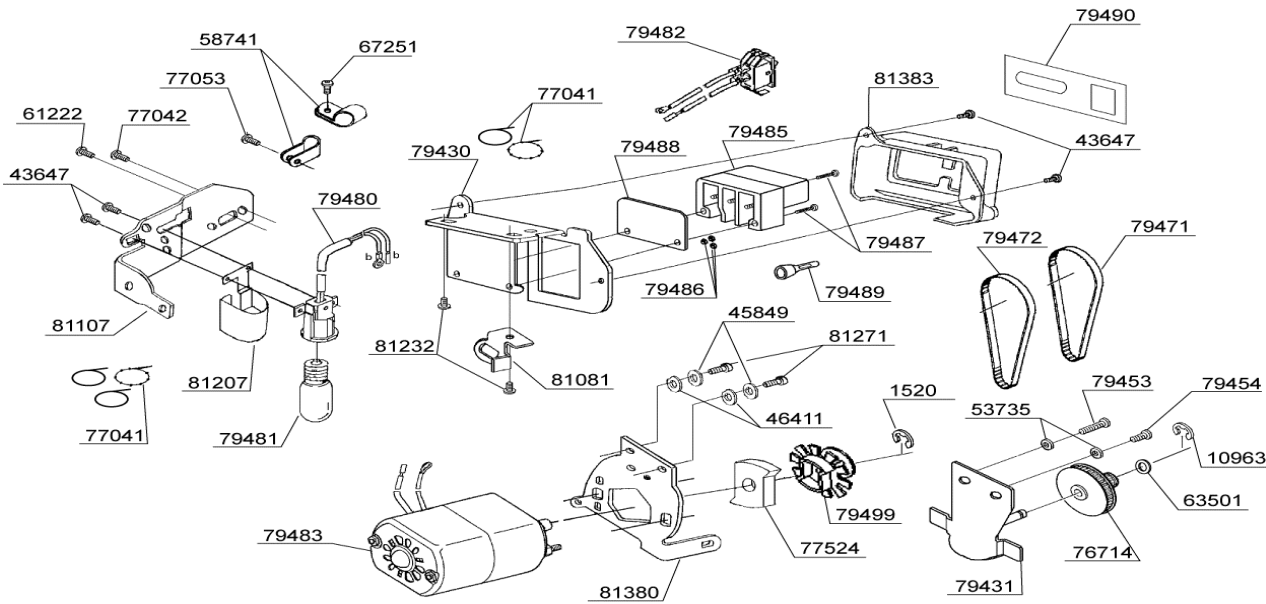
1513	E4 CLIP-ON-WASHER
1520	E3 CLIP-ON-WASHER
1615	WASHER
2206	WASHER
8400	E5 CLIP-ON-WASHER
9122	WASHER
28735	CRINKLE WASHER
31246	WASHER
32316	WASHER
43392	WASHER
46411	SPRING WASHER
61222	M4 PHILLIPS SCREW
61381	CRINKLE WASHER
62215	M4 NUT
66318	M4 SCREW
66727	HEX SCREW
67447	M5 SCREW
72858	WASHER
76482	WASHER
77042	M4 PHILLIPS SCREW
77403	SCREW
79411	SELECTOR CAM BASE
79412	PATTERN INDICATOR SUPPORT
79413	FEED LEVER
79414	OPERATING ARM A
79416	OPERATING ARM B
79417	SPRING
79418	SHAFT
79425	OPERATING PLATE
79433	BELT ADJUSTMENT PLATE
79434	SHAFT
79435	GEAR SHAFT
79436	SHAFT
79440	HORIZONTAL SHAFT LINK PLATE
79442	SUPER CHANGE LEVER
79445	M4 SHOULDER SCREW
79448	OPERATING ARM A ASSY
79450	NOTCHED SPRING
79458	OPERATING ARM
79459	PATTERN SELECTING DIAL
79464	DIAL INDICATOR
79469	BEVEL GEAR
79473	BELT
79478	PATTERN DISK
79479	SEAL
81337	BEVEL GEAR

BUYER'S MODEL NO.	118	SECTION	PAGE	REVISION	REMARKS	PART #	DESCRIPTION
BUYER'S MODEL NAME			10			1504	E7 CLIP-ON-WASHER
FACTORY MODEL	CA11860,CE118S0					1513	E4 CLIP-ON-WASHER
ORIGINAL ISSUE	March, 2004		SERIAL NO.			1520	E3 CLIP-ON-WASHER
						8400	E5 CLIP-ON-WASHER
						8466	WASHER
						9122	WASHER
						10963	E6 CLIP-ON-WASHER
						58220	WASHER
						61221	SCREW
						61222	M4 PHILLIPS SCREW
						61228	SCREW
						61341	M4 SCREW
						66318	M4 SCREW
						66725	M3 SCREW
						66727	M4 SCREW
						68439	M4 NUT
						73299	M4 TORQUE NUT
						77042	M4 PHILLIPS SCREW
						79401	FOLLOWER
						79402	PATTERN CAM BASE A
						79403	PATTERN CAM BASE B
						79404	FOLLOWER SUPPORT
						79405	NOTCHED SPRING
						79410	SHAFT
						79419	SUPER CHANGE LINK
						79421	SUPER CHANGE ARM
						79423	LENGTH OPERATION PLATE
						79424	LENGTH OPERATION LEVER
						79432	SUPER CHANGE ASSY
						79437	SUPER STITCH FOLLOWER
						79438	FOLLOWER BASE
						79443	SUPER LINK PLATE
						79446	COLLAR
						79449	COIL SPRING
						79457	SUPER STITCH CAM
						79466	PATTERN CAM
						79467	PATTERN SELECTION CAM
						79468	CAM GEAR
81054	COLLAR						
81256	SCREW						
81338	SCREW						
81340	PIN						
81353	OPERATING PLATE						
81354	ADJUSTING PLATE						
81355	SHAFT						
81371	CAM BUSH						
81375	WASHER						
81376	M4 SCREW						
81377	SPRING						
81378	SCREW						

BUYER'S MODEL NO.	118	SECTION	PAGE	REVISION	REMARKS	PART #	DESCRIPTION
BUYER'S MODEL NAME			11			1513	E4 CLIP-ON-WASHER
FACTORY MODEL	CA11860,CE118S0					1520	E3 CLIP-ON-WASHER
ORIGINAL ISSUE	March, 2004	SERIAL NO.				9122	WASHER
						28735	CRINKLE WASHER
						32949	WASHER
						61222	M4 PHILLIPS SCREW
						63805	WASHER
						73299	M4 TORQUE NUT
						77042	M4 PHILLIPS SCREW
						77044	SCREW
						77507	CLIP-ON-WASHER
						79406	ZIGZAG GUIDE PLATE
						79407	GUIDE LINK
						79408	ZIGZAG CONTROL BLOCK
						79427	ZIGZAG DIAL BASE
						79429	GUIDE PLATE LINK
						79439	ZIGZAG ADJUST LINK PLATE
						79451	EXTENSION SPRING
						79452	M4 SCREW
						79474	ZIGZAG DIAL
						81050	ECCENTRIC SCREW
						81127	M4 SCREW
						81181	FIXING PLATE
81210	SHAFT						
81231	SCREW						
81343	PLATE						
81345	REVERSE STITCH LEVER						
81379	SPRING						

BUYER'S MODEL NO.	118	SECTION	PAGE	REVISION	REMARKS	PART #	DESCRIPTION
BUYER'S MODEL NAME			12			1520	E3 CLIP-ON-WASHER
FACTORY MODEL	CA11860					10963	E6 CLIP-ON-WASHER
ORIGINAL ISSUE	March, 2004	SERIAL NO.				43647	M3 SCREW

120V



1520	E3 CLIP-ON-WASHER
10963	E6 CLIP-ON-WASHER
43647	M3 SCREW
45849	WASHER
46411	WASHER
53735	WASHER
58741	CORD GUARD
61222	M4 PHILLIPS SCREW
63501	WASHER
67251	SCREW
76714	PULLEY
77041	UNITY FASTENER
77042	M4 PHILLIPS SCREW
77053	M3 SCREW
77524	GEAR CLUTCH
79430	TERMINAL BLOCK BRACKET
79431	INTERMEDIATE GEAR PLATE
79453	M4 CP BOLT
79454	M4 CP BOLT
79471	BELT
79472	BELT
79480	LAMP CORD UNIT
79481	LIGHT BULB
79482	SWITCH ASSEMBLY
79483	MOTOR (120V)
79485	TERMINAL BLOCK
79486	M3 NUT
79487	M3 BINDING SCREW
79488	INSULATION PLATE
79489	CONNECTOR
79490	PLATE
79499	MOTOR PULLEY
81081	BELT GUIDE PLATE
81107	LAMP PLATE
81207	BULB COVER
81232	SCREW
81271	CP BOLT
81380	MOTOR SUPPORT
81383	TERMINAL COVER

BUYER'S MODEL NO.	118	SECTION	PAGE	REVISION	REMARKS	PART #	DESCRIPTION
BUYER'S MODEL NAME			13			1520	E3 CLIP-ON-WASHER
FACTORY MODEL	CE118S0					10963	E6 CLIP-ON-WASHER
ORIGINAL ISSUE	March, 2004		SERIAL NO.			43647	M3 SCREW
<div style="border: 1px solid black; padding: 5px; width: fit-content; margin-bottom: 10px;">230V</div>						45849	WASHER
						46411	WASHER
						53735	WASHER
						54350	SEAL
						58741	CORD GUARD
						61222	M4 PHILLIPS SCREW
						63501	WASHER
						67251	SCREW
						72924	LAMP HOLDER BRACKET
						72925	CAP BOLT
						72935	LIGHT BULB
						72988	M4 BOLT WITH WASHER
						73900	SCREW
						74358	WASHER
						76714	PULLEY
						77041	UNITY FASTENER
						77042	M4 PHILLIPS SCREW
						77053	M3 SCREW
						77524	GEAR CLUTCH
						79430	TERMINAL BLOCK BRACKET
						79431	INTERMEDIATE GEAR PLATE
						79453	M4 CP BOLT
						79454	M4 CP BOLT
						79471	BELT
						79472	BELT
						79482	SWITCH ASSEMBLY
						79485	TERMINAL BLOCK
79486	M3 NUT						
79487	M3 BINDING SCREW						
79488	INSULATION PLATE						
79489	CONNECTOR						
79490	PLATE						
79492	MOTOR (230V)						
79494	REFLECTING PLATE						
79499	MOTOR PULLEY						
79502	BRACKET						
79503	LAMP PLATE						
79504	LAMP CPRD						
81081	BELT GUIDE PLATE						
81232	SCREW						
81271	CP BOLT						
81380	MOTOR SUPPORT						
81383	TERMINAL COVER						

BUYER'S MODEL NO.	118	SECTION	PAGE	REVISION	REMARKS	PART #	DESCRIPTION
BUYER'S MODEL NAME			14			1424	WASHER
FACTORY MODEL	CA11860,CE118S0					1520	E3 CLIP-ON-WASHER
ORIGINAL ISSUE	March, 2004	SERIAL NO.				63271	NUT
<p>The diagram shows an exploded view of a sewing machine head assembly. Key components include: <ul style="list-style-type: none"> 79470: Cover fixing plate (top left) 81242: M3.5 Phillips screw (multiple locations) 77042: M4 Phillips screw (top center) 81241: M3 Phillips screw (top center) 79444: Cover fixing plate (top center) 81160: Screw (top center) 81203: Spring (top center) 81180: Disc (top center) 81159: Tension disc base B (top center) 81272: Tension disc base A (top center) 81131: Shaft (top center) 1520: E3 clip-on-washer (top center) 81174: Bobbin winder latch (top center) 81178: Reflecting sheet (middle left) 81128: Spring (middle left) 81211: Cushion (middle left) 79462: Indicator window (middle right) 79476: Control panel (middle right) 73299: M4 torque nut (bottom left) 81073: Washer (bottom center) 1424: Washer (bottom center) 68891: Washer (bottom right) 81073: Washer (bottom right) 1424: Washer (bottom right) </p>						79470	COVER FIXING PLATE
						81073	WASHER
						81128	SPRING
						81129	M4 SCREW
						81131	SHAFT
						81159	TENSION DISC BASE B
						81160	SCREW
						81174	BOBBIN WINDER LATCH
						81178	REFLECTING SHEET
						81180	DISC
						81203	SPRING
						81211	CUSHION
						81238	M3.5 PHILLIPS SCREW
						81241	M3 PHILLIPS SCREW
						81242	M3.5 PHILLIPS SCREW
						81243	M3.5 SCREW
						81272	TENSION DISC BASE A
						81352	FACE COVER

BUYER'S MODEL NO.	118	SECTION	PAGE	REVISION	REMARKS	PART #	DESCRIPTION
BUYER'S MODEL NAME			16			51007	ACCESSORY SET
FACTORY MODEL	CA11860,CE118S0					63398	SEWING MACHINE OIL
ORIGINAL ISSUE	March, 2004					67233	NEEDLE SET (3 PCS)
			SERIAL NO.			72959	FOOT CONTROL (120V)
						74793	SMALL SCREW DRIVER
						76252	ZIPPER FOOT
						76281	BOBBIN
						76322	BUTTONHOLE FOOT
						76757	DUST COVER
						77151	INSTRUCTION BOOK (Eng/Esp/Fra)
						79070	SPOOL PIN CAP
						79455	LARGE SCREW DRIVER
						79497	OVERCASTING FOOT
						79498	STRAIGHT STITCH FOOT
						85124	SPOOL PIN CAP
						85365	BUTTONHOLE OPENER / BRUSH
						77152	INSTRUCTION BOOK (Eng/Ita/Ger)
						72962	FOOT CONTROL (230V)