



PowerFlex 22-HIM-A3 and 22-HIM-C2S Series C HIM Firmware Revision 3.001

Important: PowerFlex 22-HIM-A3/-C2S Series B HIMs do not exist. Series B was intentionally skipped.

This release note describes major revision 3, minor revision 1 of firmware for the PowerFlex 22-HIM-A3 and 22-HIM-C2S Series C HIM (Human Interface Module).

Important: Firmware 3.001 can only be updated into a 22-HIM-A3/-C2S Series C HIM and is not compatible with a 22-HIM-A3/-C2S Series A HIM. Conversely, firmware 2.006 or earlier is not compatible with a 22HIM-A3/-C2S Series C HIM.

Introduction

The following information is included in this document.

Topic	Page
Enhancements	1
Corrected Anomalies	1
Determining Firmware Revision	2
Updating the Firmware	4
Restrictions	7
Compatible Revisions	7
Rockwell Automation Support	8
Product Satisfaction Return	8

Enhancements

This section describes the enhancements provided in this revision of firmware:

- The redesigned and simplified circuit board provides better HIM reliability.
- The HIM is now brand-neutral, allowing it to successfully connect to and be used with an Allen-Bradley brand DSI drive (PowerFlex 4-Class) or a Reliance Electric brand DSI drive.

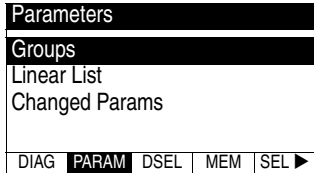
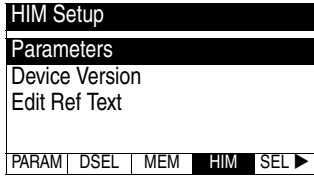
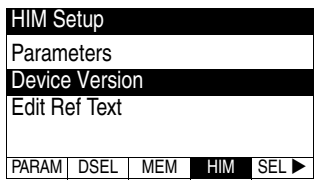
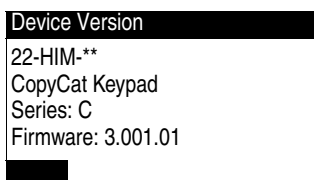
Corrected Anomalies

There are no anomalies corrected in this revision of firmware.

Determining Firmware Revision

This section describes procedures to determine the firmware revision of your external PowerFlex 22-HIM-A3 or 22-HIM-C2S Series C HIM.

Using the External 22-HIM-A3 or 22-HIM-C2S HIM

Step	Example Screens
1. Power up the drive. 2. Plug the HIM into the drive. The Parameters menu for the <u>drive</u> will be displayed.	
3. Press the Sel (Sel) key until the HIM Setup menu is displayed.	
4. Press the Down Arrow key to scroll to Device Version .	
5. Press the Enter (Enter) key to display the present firmware version of the HIM, shown on the Firmware line.	

Using DriveExplorer Lite/Full Software

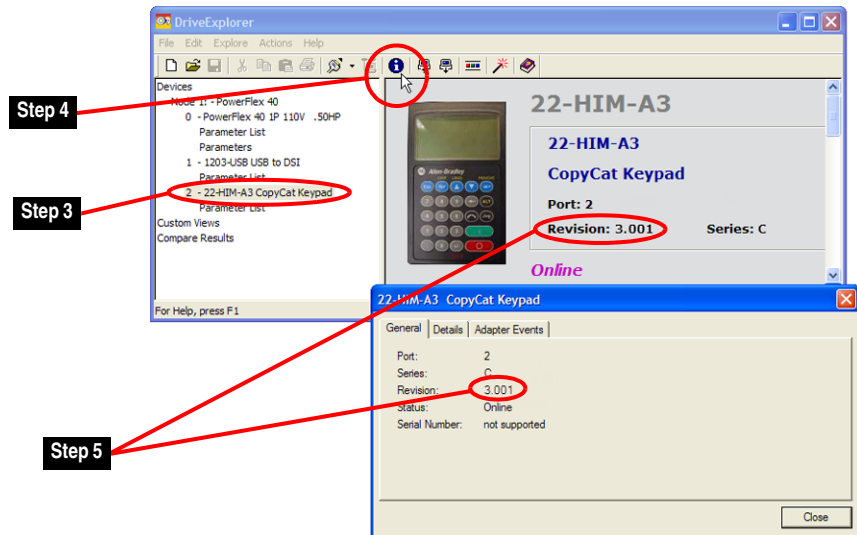
1. Launch DriveExplorer software.
2. Using a 1203-USB or 22-SCM-232 converter, go online with the drive that is connected to the HIM.

As an alternative when using DriveExplorer Full software, you can go online with the drive on Ethernet through a connected 22-COMM-E communication adapter.

3. In the DriveExplorer treeview, select the 22-HIM-xx SER C (see [Figure 1](#)).
4. Click the information icon **i** to display the HIM Properties screen.
5. The 'Revision' field shows the present revision of the HIM firmware (for example, 3.001) .

► **TIP:** When selecting the 22-HIM-xx SER C using DriveExplorer Lite or Full software, version 5.01 or later, the HIM firmware revision is also shown in the right pane of the DriveExplorer window.

Figure 1 DriveExplorer Window with Information Icon and Device Properties



Using DriveExecutive Software


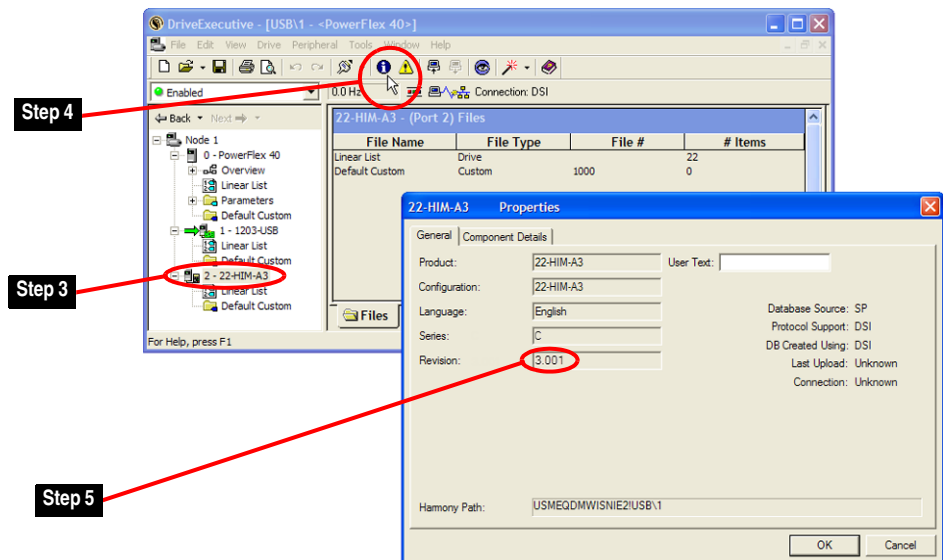
1. Launch DriveExecutive.
2. Using a 1203-USB or 22-SCM-232 converter, go online with the drive that is connected to the HIM.
3. In the DriveExecutive treeview, select the 22-HIM-xx SER C (see [Figure 2](#)).
4. Click the information icon  to display the HIM Properties screen.
5. The 'Revision' field shows the present revision of the HIM firmware (for example, 3.001).

Figure 2 DriveExecutive Window with Information Icon and Device Properties



Updating the Firmware

This section describes procedures to update the HIM firmware. Flash kits for drives, communications adapters, and peripherals are provided on the Allen-Bradley Web Updates site at <http://www.ab.com/support/abdrives/webupdate>. Updating can be performed using a 1203-USB or 22-SCM-232 converter. For information about how to connect to your drive, see their respective User Manual. They can be viewed/downloaded on the Literature Library website at <http://www.literature.rockwellautomation.com>.




ATTENTION: Risk of permanent equipment damage exists. Once an update has been started, do not remove power from the drive until after the download has completed and the HIM has re-initialized with the connected drive. If power is removed before this occurs, the HIM may be permanently damaged. A HIM that has been damaged in this way cannot be repaired.

Installing the Flash Kit

1. Go to the Allen-Bradley Web Updates site at <http://www.ab.com/support/abdrives/webupdate> and install the flash kit for the PowerFlex 4-Class HIM Series C, which also automatically installs the ControlFLASH software on your computer.
2. You are now ready to use DriveExplorer, DriveExecutive, ControlFLASH or HyperTerminal software to update the HIM. See the respective section below and follow the instructions.


Using DriveExplorer Lite/Full Software to Update Firmware

1. With the Flash Kit installed (see [Installing the Flash Kit](#)), launch DriveExplorer software.
2. Using a 1203-USB or 22-SCM-232 converter, go online with the drive that is connected to the HIM.
3. In the DriveExplorer treeview, select the 22-HIM-xx SER C HIM.
4. Click the information icon  (see [Figure 1](#)) to display the HIM Properties screen.
5. On the HIM Properties screen, click the Details tab.

Important: This update may cause the HIM parameters to revert to their default values. You may want to save your configuration using DriveExplorer software or the HIM CopyCat feature before updating.

6. Click Flash Update to start the update.
7. Select '3.001.xx' from the list of available updates.
8. Click Next >.
9. Follow the remaining screen prompts until the update procedure completes and displays the new firmware revision 3.001.

Using DriveExecutive Software to Update Firmware

1. With the Flash Kit installed (see [Installing the Flash Kit](#)), launch DriveExecutive software.
2. Using a 1203-USB or 22-SCM-232 converter, go online with the drive that is connected to the HIM.
3. In the DriveExecutive treeview, select the 22-HIM-xx SER C HIM.
4. Click the information icon  (see [Figure 2](#)) to display the HIM Properties screen.
5. On the HIM Properties screen, click the Component Details tab.

Important: This update may cause the HIM parameters to revert to their default values. You may want to save your configuration using DriveExecutive software or the HIM CopyCat feature before updating.

6. Click Flash Update to start the update.
7. Select the 22-HIM-xx SER C from the list of available devices.
8. Click Next >.
9. Select '3.001.xx' from the list of available updates.
10. Click Next >.
11. Follow the remaining screen prompts until the update procedure completes and displays the new firmware revision 3.001.

Using ControlFLASH Software to Update Firmware

1. With the Flash Kit installed (see [Installing the Flash Kit on page 4](#)), choose Start > (All) Programs > Flash Programming Tools > ControlFLASH to launch the ControlFLASH software.
2. On the ControlFLASH Welcome screen, click Next >.
3. Choose the appropriate 22-HIM-Ax update (even though, for example, you may be updating a 22-HIM-C2S) from the list of available updates.
4. Click Next>.

Important: This update may cause the HIM parameters to revert to their default values. You may want to save your configuration using the HIM CopyCat feature, or DriveExplorer or DriveExecutive software before updating.

5. Expand the treeview for the communication path you are using, and select the drive icon that represents the drive connected to the HIM you are updating.
6. Click OK.
7. If the Multiple Assemblies Found window appears, select 'Port X - 22-HIM-xx SER C' from the list and click OK. If this window does not appear, proceed with step 8.

8. With the Firmware Revision window displayed, select '3.001.xx' from the list of available updates.
9. Click Next >.
10. Follow the remaining screen prompts until the update procedure completes and displays the new firmware revision 3.001.

Using HyperTerminal Software to Update Firmware

1. With the Flash Kit installed (see [Installing the Flash Kit on page 4](#)), launch HyperTerminal software.
2. Using a 1203-USB or 22-SCM-232 converter, go online with the drive that is connected to the HIM.
3. Press Enter until the main menu appears.

```
Main Menu - Enter Number for Selection
1> Display Setup Parameters
2> Display Event Queue
3> Flash Upgrade
```

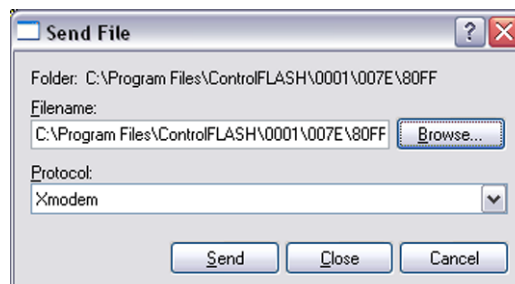
4. In the main menu, press '3' to flash upgrade.
5. Press the number key that corresponds to the '22-HIM-xx SER C' in the list.
6. Press 'Y' (for Yes) to update the firmware.

The terminal program will start displaying the letter 'C'. This signals the Xmodem protocol that the download may proceed. You then have one minute to start the transfer.



ATTENTION: Risk of injury or equipment damage exists. When you perform an update, the drive will fault if it is receiving control I/O from the HIM. Verify that the drive has stopped safely or is receiving control I/O from an alternate source before beginning an update.

7. From the Transfer menu, choose Send File to display the Send File screen.



- a. Click Browse.
- B. Navigate to the flash file located in C:\Program Files\ControlFLASH\0001\007E\80FF

C. In the Select File to Send window list, select the '22-HIM-Ax BOOT 2.001.06.bin' file.

D. Click Open.

This file name now appears in the Filename box in the Send File screen.

E. From the Protocol pull-down menu, choose 'Xmodem'.

F. Click Send.

A dialog box appears and reports the update progress. When complete, a 'Flash Complete' message appears. Press any key to continue.

Important: Keep the HIM powered for 15 seconds after the operation has completed or until the HIM has re-initialized with the drive.

► **TIP:** To cancel the flash update at any time, press CTRL-X.

8. Repeat steps 3 through 7 for the '22-HIM-Ax APP 3.001.06.bin' file.

9. Press the Enter key to return to the main menu.

Restrictions

No restrictions apply to this revision of firmware.

Compatible Revisions

To use this revision of firmware, update your system tools as follows:

Tool/Device	Version Required
DriveExplorer Lite/Full software	4.01 or later
DriveExecutive software	3.01 or later
PowerFlex 4-Class drive	all versions compatible
External 22-HIM-xx Series C HIM	all versions compatible
RSLinx Classic software	2.51 or later

Rockwell Automation Support

Rockwell Automation provides technical information on the web to assist you in using our products. At <http://support.rockwellautomation.com>, you can find technical manuals, a knowledge base of Frequently Asked Questions (FAQs), technical and application notes, sample code and links to software service packs, and a MySupport feature that you can customize to make the best use of these tools.

Rockwell Automation also provides complimentary phone support for drives, communication adapters, and peripherals. If you experience a problem with a device, please see the information in its User Manual. For further help in getting your device operational, contact a Customer Support representative:

United States	(1) 262.512.8176 Monday – Friday, 7am – 6pm CST
Outside United States	Please contact your local Rockwell Automation representative for any technical support issues.

For an additional level of technical phone support for installation, configuration, and troubleshooting, TechConnect Support programs are available. For more information, contact your local distributor, a Rockwell Automation representative, or visit <http://support.rockwellautomation.com>.

Product Satisfaction Return

Rockwell Automation tests all products to ensure that they are fully operational when shipped from the manufacturing facility. However, if your product is not functioning and needs to be returned, follow the steps below.

United States	Contact your distributor. You must provide a Customer Support case number (see phone number above to obtain one) to your distributor to complete the return process.
Outside United States	Contact your local Rockwell Automation representative for the return procedure.

U.S. Allen-Bradley Drives Technical Support - Tel: (1) 262.512.8176, Fax: (1) 262.512.2222, Email: support@drives.ra.rockwell.com, Online: www.ab.com/support/abdrives

www.rockwellautomation.com

Power, Control and Information Solutions Headquarters

Americas: Rockwell Automation, 1201 South Second Street, Milwaukee, WI 53204-2496 USA, Tel: (1) 414.382.2000, Fax: (1) 414.382.4444

Europe/Middle East/Africa: Rockwell Automation, Vorstlaan/Boulevard du Souverain 36, 1170 Brussels, Belgium, Tel: (32) 2 663 0600, Fax: (32) 2 663 0640

Asia Pacific: Rockwell Automation, Level 14, Core F, Cyberport 3, 100 Cyberport Road, Hong Kong, Tel: (852) 2887 4788, Fax: (852) 2508 1846