



COMPANIES REGISTRY

USER MANUAL FOR THE THIRD PARTY SOFTWARE INTERFACE (TPSI) TESTING ENVIRONMENT

of

Integrated Companies Registry Information System for the Companies Registry

Version : 1.3
Status : Final
Date : Aug 2015
Doc Ref :

Prepared By:



© The Government of the Hong Kong Special Administrative Region

Distribution of Controlled Copy	
Copy No.	Holder
1	Companies Registry
2	PCCW Solutions Ltd. (The Contractor)

Amendment History

Version	Date	Amendment Description
1.0	13-May-2011	First version.
1.1	2-Sept-2011	Update the testing available time slots from this document to CR website
1.2	30-Oct 2013	Update section 2.1, for (i) adding IE8 as supported browser version and (ii) updating all screenshots in section 2.1
1.3	18-Aug-2015	Update section 2.1, for (i) adding IE9 and IE10 as supported browser and (ii) removing IE6 and IE7.

Table of Contents

Using TPSI Testing Environment to Perform Test on XML Data File	1
1 Request for Granting Access to TPSI Testing Environment	2
2 Performing Test on XML Data Files.....	3
2.1 Login TPSI Testing Environment	3
2.2 Upload and Submit XML Data File.....	6
3 Problem Reporting.....	14

Using TPSI Testing Environment to Perform Test on XML Data File

This document covers the procedure that the external users should follow in order to use TPSI Testing Environment provided by the Companies Registry (CR) to test and ensure that their XML data files prepared compatible with the interface file format required.

The relevant TPSI functions will only perform syntax checking of the XML data files prepared and submitted by the external users. The external users should further perform semantic checking and ensure data correctness of the XML data files by themselves. The XML data files so submitted to and the resultant e-Forms so generated by the TPSI Testing Environment are solely for testing purpose and would be removed by the Companies Registry when necessary without further notice to the users. For security reasons, external users are also advised not to use production data to perform testing.

The TPSI Testing Environment is available in regular time slots only. For details, please refer to the Companies Registry website (<http://www.cr.gov.hk>), under the page “About Us > Development Programme > Third Party Software Interface with e-Registry > Third Party Software Interface Testing Environment”.

1 Request for Granting Access to TPSI Testing Environment

- a) Firstly, the external user is required to send the request to CR via the email address (tpsitestesting@pccw.com) for performing test of their XML data files on TPSI Testing Environment. The external user needs to provide his/ her company name and contact point (name, email address and phone number) in the request email. Then, the external user will receive an email reply from CR with the URL of TPSI Testing Environment and the login ID and password provided. The login ID and password are provided for the sole and exclusive use of the external user making the request who should not disclose them to others.

2 Performing Test on XML Data Files

2.1 Login TPSI Testing Environment

- a) The external user opens a suitable Web browser (Microsoft IE 8 / 9 / 10) and type in the URL of TPSI Testing Environment. The following login dialog box (Fig. 1) will be shown. The external user needs to enter the correct login ID and password provided; and then click the “OK” button to proceed. After log in successfully, the system will prompt the external user to trust the CR self-signed certificate.

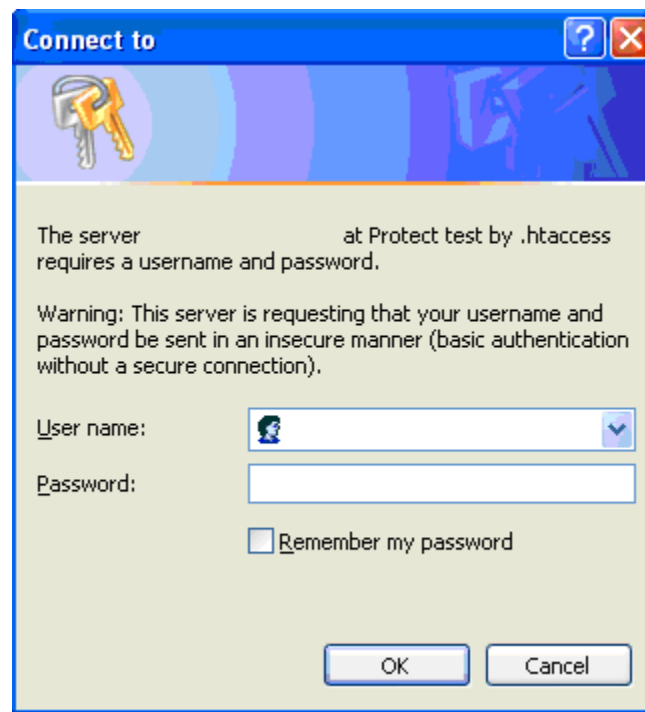


Figure 1: Login Dialog Box

- b) If the login time is within the available time slots, the following web page will be shown. The external user should read and agreed with the terms and conditions shown on the page by pressing the “Yes” button to proceed. If the external user does not want to proceed, the external user should press the “No” button to exit from TPSI Testing Environment.

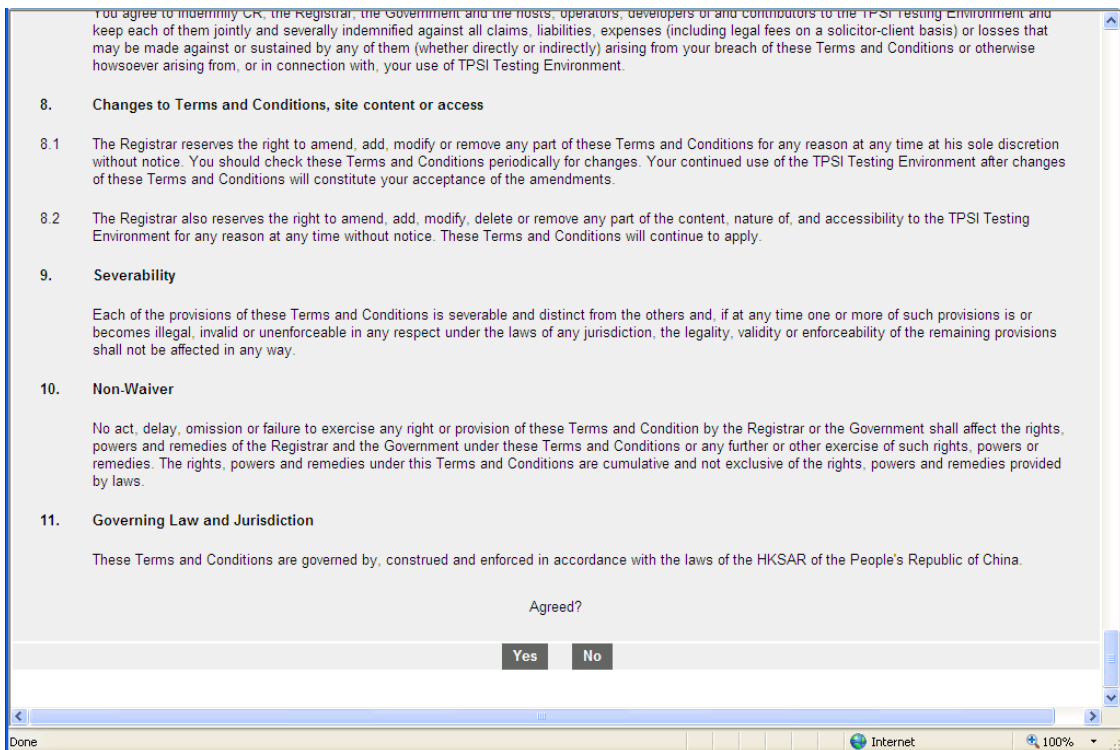


Figure 2: “General Terms and Conditions” Web Page.

- c) If the time that the external user tries to login TPSI Testing Environment is out of the available time slots, a web page with the available testing time slots will be shown. A sample web page can be found below (Fig. 3) for reference. The

external user can press the “Close” button to exit from the TPSI Testing Environment.



Figure 3: “Testing Environment Available Time Slot” Web Page

(Remarks: The available time slots listed in Figure 3 may not reflect the actual situation, please refer to the TPSI testing environment for details)

2.2 Upload and Submit XML Data File

- a) After pressing the “Yes” button at the bottom of the “General Terms and Conditions” web page as shown in Page 4 above, the following “Upload TPSI XML Data Files” web page (Fig. 4) will be shown.

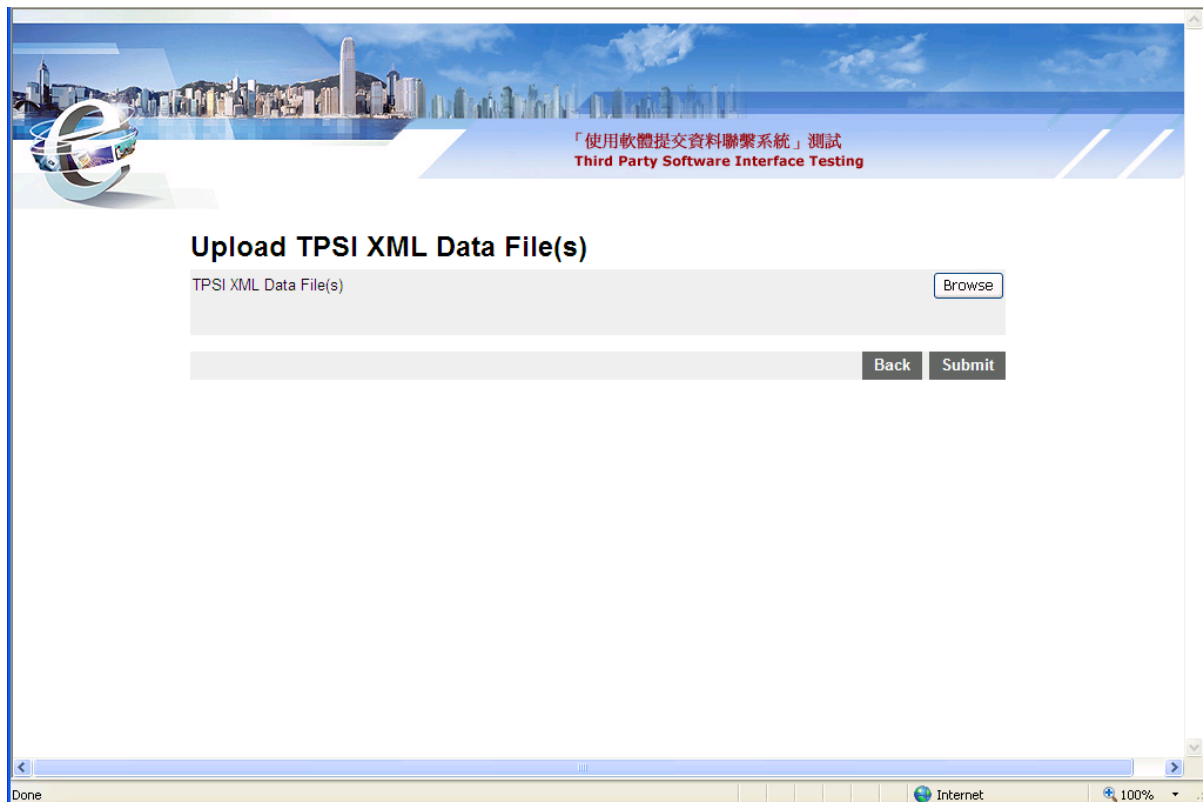


Figure 4: “Upload TPSI XML Data Files” Web Page

- b) The external user can click the “Browse” button to locate the to-be-uploaded XML data file from the local disk drive of the PC in where the file concerned is stored as shown in the following XML Data Files Selection Screen (Fig. 5). A maximum of 5 files are allowed to be selected and subsequently uploaded to the system at a time.
- c) Pressing the “Back” button on the “Upload TPSI XML Data Files” web page (Fig. 4) will return to the “General Terms and Conditions” web page (Fig. 2) as shown in Page 4.

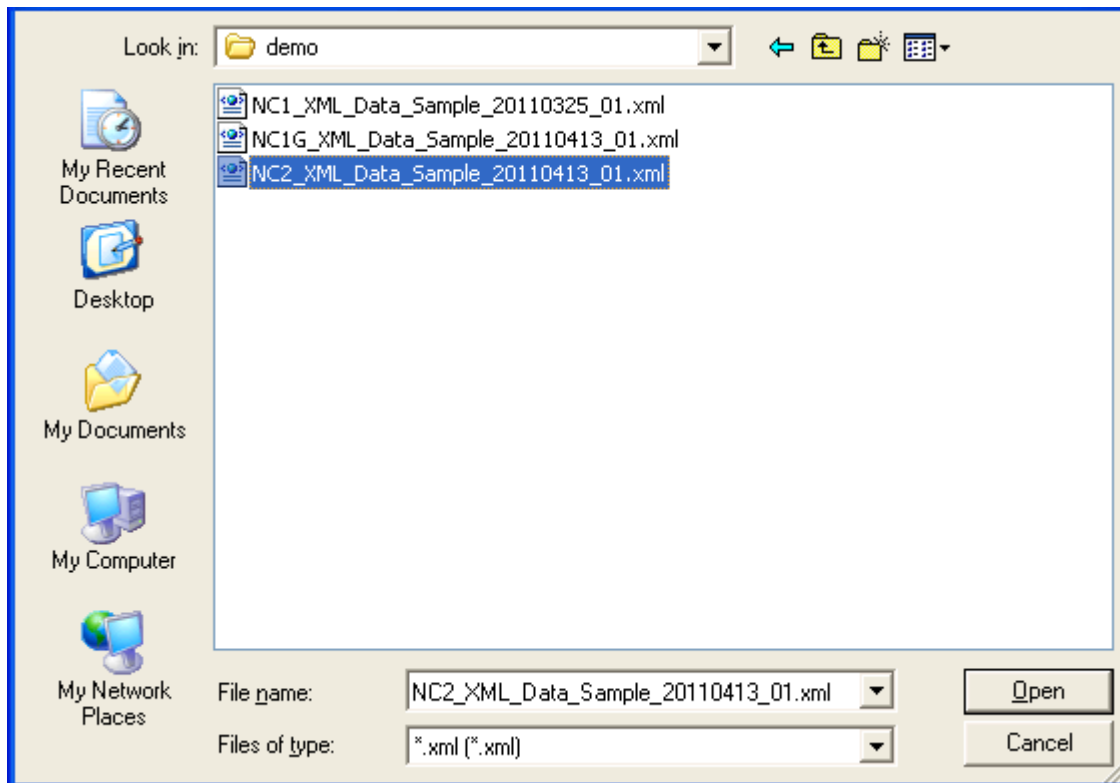


Figure 5: XML Data Files Selection Screen

- d) Select the to-be-uploaded XML data file(s) and then click the “Open” button on the XML Data Files Selection Screen (Fig. 5). The XML data file(s) will then be uploaded to the system.
- e) Pressing the “Cancel” button on the XML Data Files Selection Screen (Fig. 5) will return to the “Upload TPSI XML Data File(s)” web page (Fig. 4) as shown in Page 7 above.
- f) After the XML data file(s) selected is/ are uploaded successfully to the system, the name of the uploaded XML data file together with the ‘*NB/NK/NM* Uploaded successfully.’ message (where *N* is the file size) will be displayed on the “XML Data File Upload Successful” web page (Fig. 6) as shown in Page 9 below.
- g) The system will automatically “check” the checkbox before the name of the uploaded XML data file as shown on the “XML Data File Upload Successful” web page (Fig. 6). When pressing the “Submit” button, the system will process the uploaded XML data file. If the external user does not want to submit an individual XML data file uploaded, he/she may uncheck the checkbox of the specific file before pressing the “Submit” button.
- h) The external user can also press the “Back” button on the “XML Data File Upload Successful” web page (Fig. 6) to return to the “General Terms and Conditions” web page (Fig. 2) as shown in Page 4.

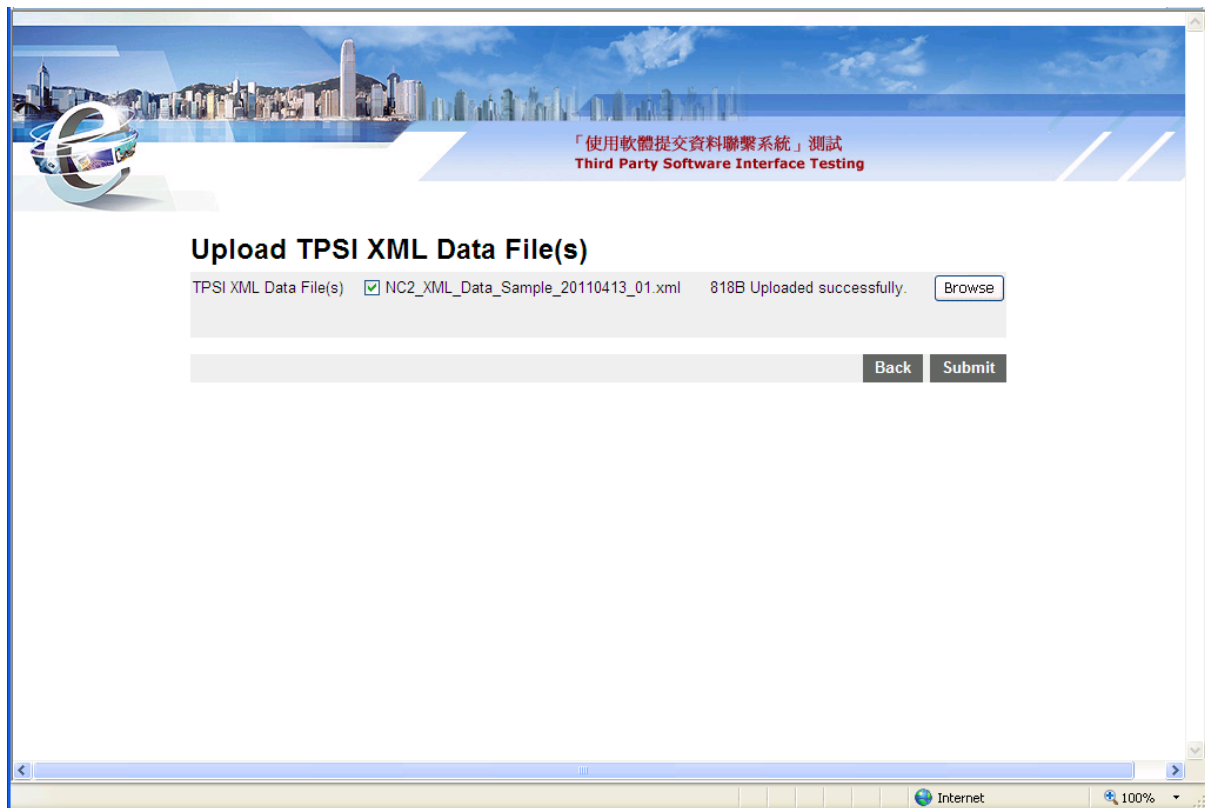


Figure 6: “XML Data File Upload Successful” Web Page

- i) If the external user wants to upload another XML data file to the system, he/she may click the “Browse” button on the “Upload TPSI XML Data Files” Web Page (Fig. 4) to select another XML data file.
- j) Then, with the checkbox before the name of the uploaded XML data file being “checked”, the external user should press the “Submit” button on the “XML Data File Upload Successful” web page (Fig. 6) such that the system will convert the uploaded XML data file into an e-Form.
- k) Pressing the “Back” button on the “XML Data File Upload Successful” web page (Fig. 6) will return to the “General Terms and Conditions” web page (Fig. 2) as shown in Page 4.

- l) The result of the XML data file conversion process will be shown on the “XML Data File Conversion Result” Web Page (Fig. 7) as follows.



Figure 7: “XML Data File Conversion Result” Web Page

- m) If the conversion process of a XML data file is successful, the hyperlink for the e-Form file so generated will be shown under the ‘File Name’ column for download. The word “Succeed” will also be shown under the ‘Submission Result’ column. The external user can click on the hyperlink to open and/ or save the e-Form so generated as shown in the “Converted Result (.vxf) Opening / Saving Screen” (Fig. 8) in Page 10 below.
- n) If the conversion process of a XML data file is not successful, the name of the XML data file concerned and the word “Rejected” will be shown under the ‘File Name’ column and the ‘Submission Result’ column respectively. The failure reason will also be given under the “Reason” column as shown in the “XML Data File Conversion Result – Rejected Case” Web Page” (Fig. 9) in Page 10 below.
- o) Pressing the “Back” button on the “XML Data File Conversion Result” Web Page (Fig. 7) will return to the “Upload TPSI XML Data File(s)” web page (Fig. 4) in Page 7 above.

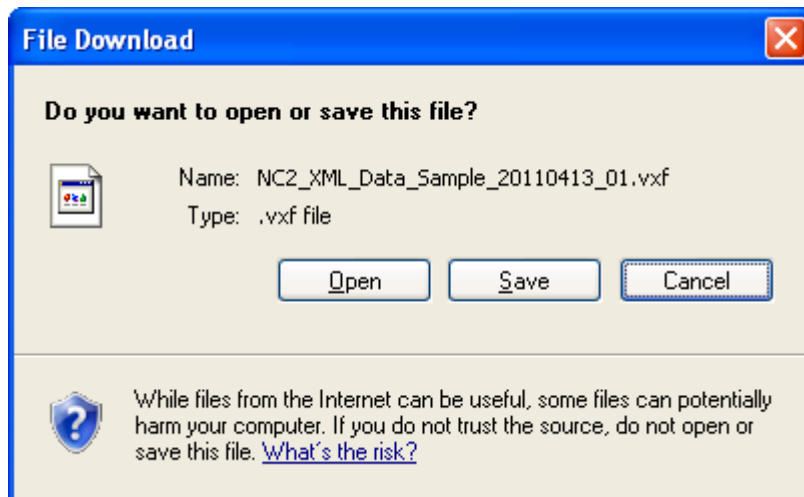


Figure 8: Converted Result (.vxf) Opening / Saving Screen



Figure 9: “XML Data File Conversion Result – Rejected Case” Web Page

- p) The external user can click the “Save” button on the “Converted Result (.vxf) Opening / Saving Screen” (Fig. 8) above to further save the e-Form file generated to the local disk drive of the PC as shown in the “Save e-Form File (.vxf) Screen” (Fig. 10) in the following page.

- q) Pressing the “Open” button on the “Converted Result (.vxf) Opening / Saving Screen” (Fig. 8) will open the e-Form file generated with an e-Form filler installed. If the external user has not installed an e-Form Filler in his/ her PC, the system would ask the external user to choose other available application software to open the e-Form file.
- r) Pressing the “Cancel” button on the “Converted Result (.vxf) Opening / Saving Screen” (Fig. 8) will return to the ”XML Data File Conversion Result” web page (Fig. 7) as shown in Page 9 above.

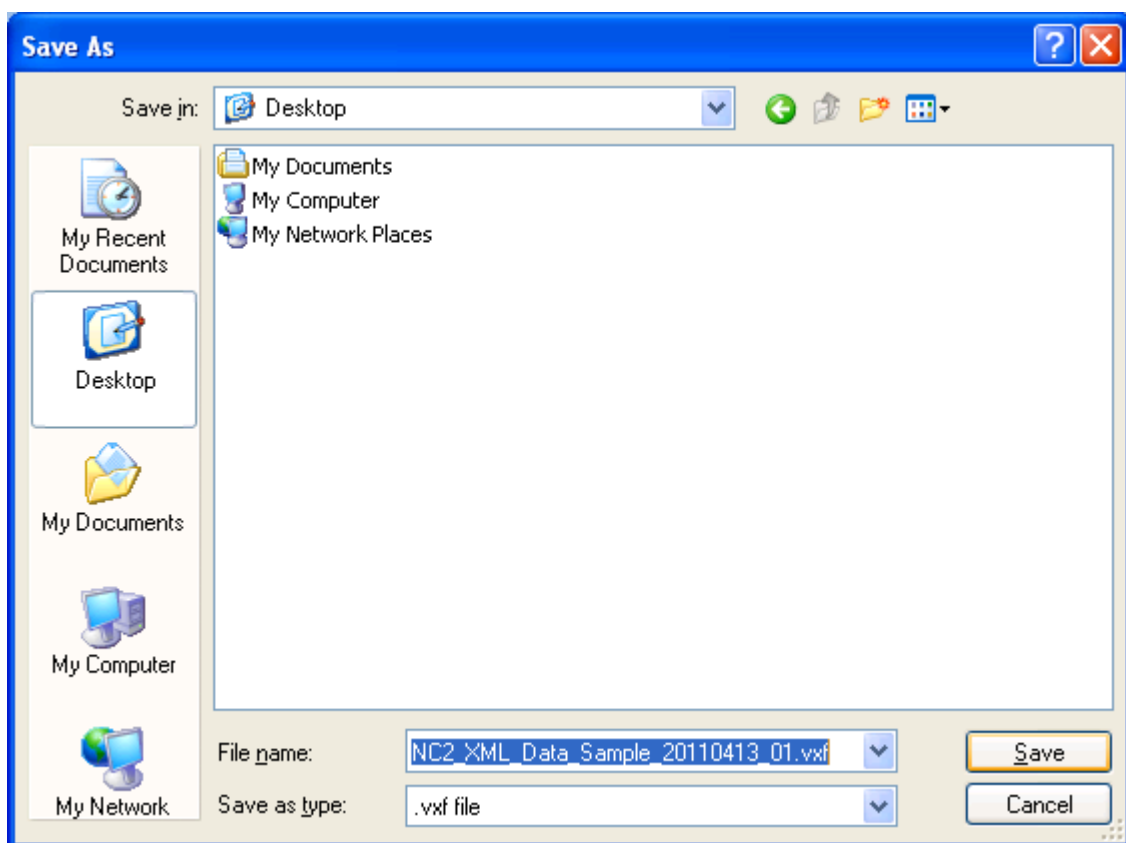


Figure 10: Save e-Form File (.vxf) Screen

- s) The external user can also press the “Save Screen” button on the “XML Data File Conversion Result” Web Page (Fig. 7) to save the conversion result as a file in html format to the local disk drive of the PC as shown in the “Save Conversion Result Screen” (Fig. 11) in the following page.

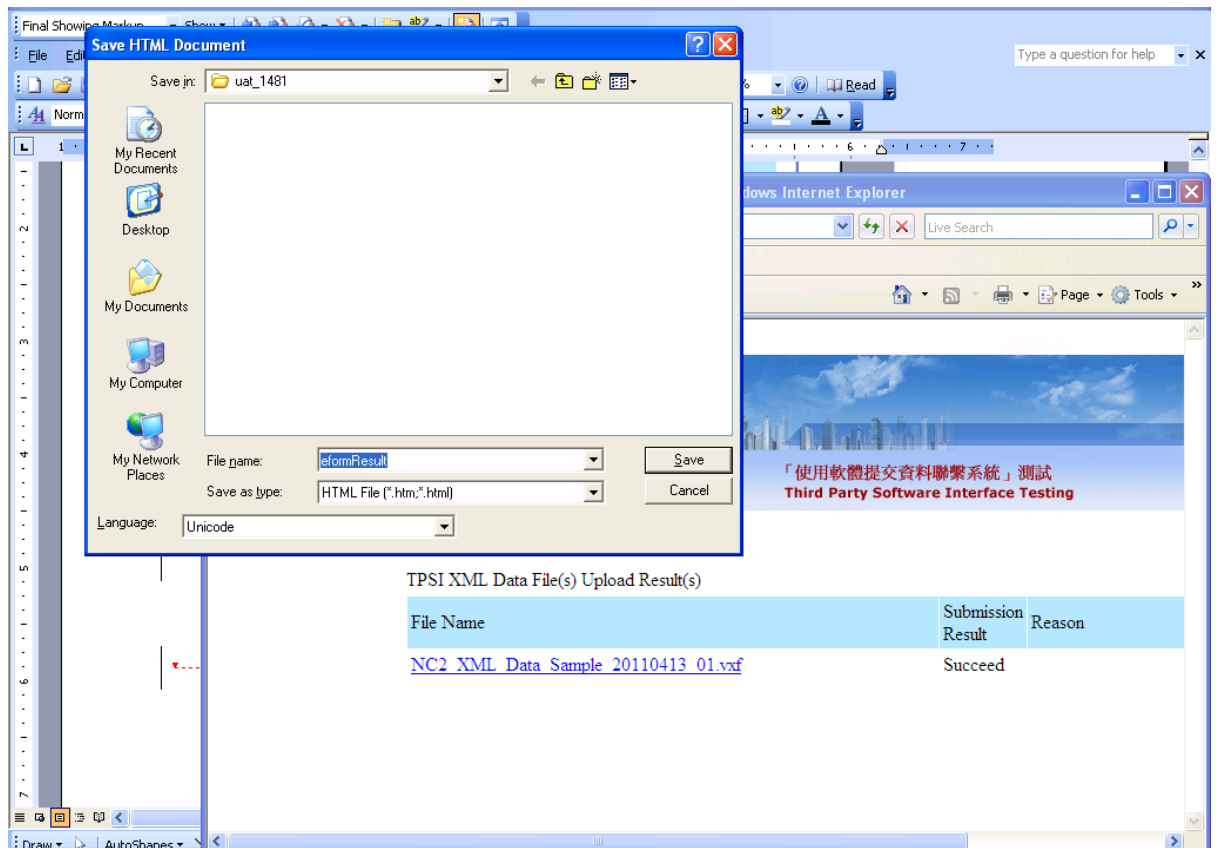


Figure 11: Save Conversion Result Screen

- t) The external user can press “Print” button on the “XML Data File Conversion Result” web page (Fig. 7) to further print out the conversion result from a printer as shown in the “Print Conversion Result Screen” (Fig.12) below.
- u) To start conversion of another XML data file, press the “Back” button on the “XML Data File Conversion Result” web page (Fig. 7) to return to the “Upload TPSI XML Data File(s)” web page (Fig. 4) as shown in Page 7 above .

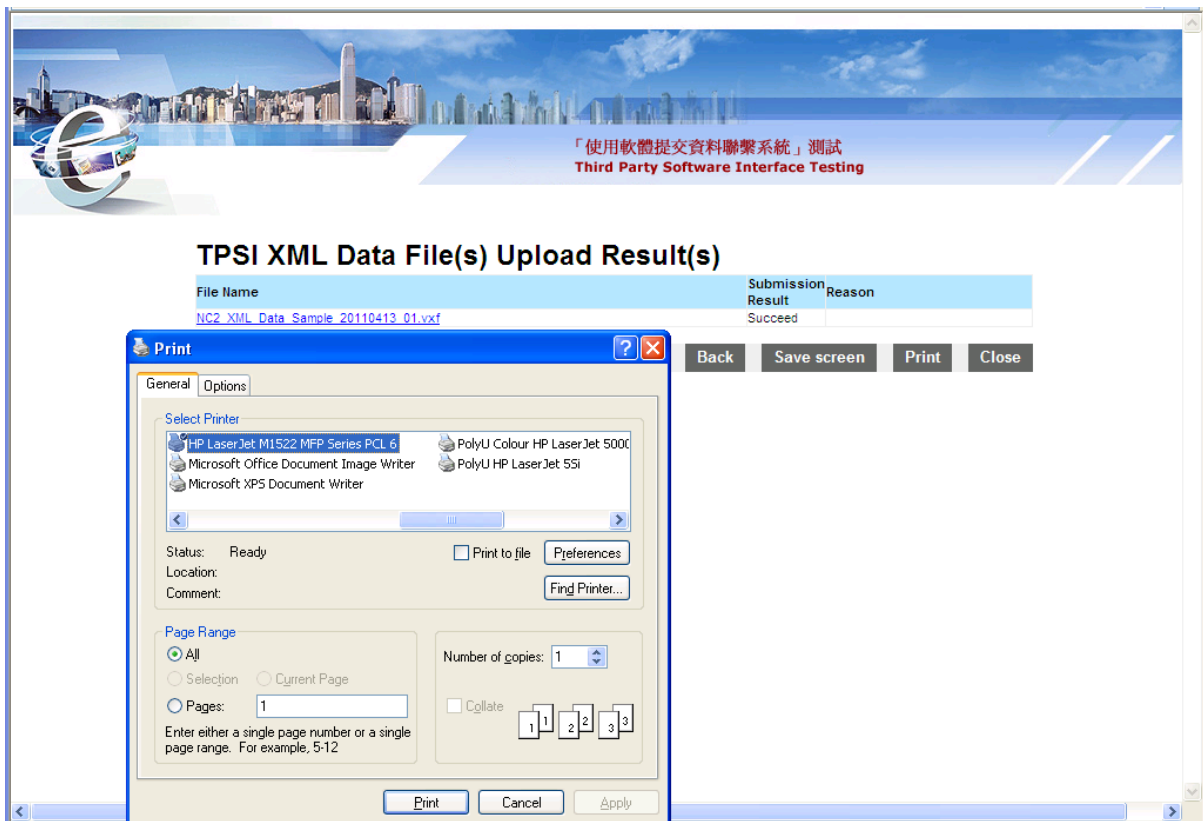


Figure 12: Print Conversion Result Screen

3 Problem Reporting

The external user may send an email containing the problem details to CR via the email address (tpsitesting@pccw.com) when encountering problems during the test. CR would then contact and/ or reply to the external user through the email address or the phone number provided if any.

*** End of Document ***