



**RH5xx/RA5xx Series DVR  
USER'S MANUAL**

## Hikvision® Network Digital Video Recorder User Guide

Copyright © 2009, Hikvision, Ltd. All rights reserved.

This document may not be copied in whole or in part or otherwise reproduced without prior written consent from Hikvision except where specifically permitted under US and international copyright law.

The information in this document is subject to change without notice. Hikvision assumes no responsibility or liability for any errors or inaccuracies that may appear in this book.

This manual is written for DVR firmware version 1.0.2.



# TABLE OF CONTENTS

<b>CHAPTER 1 Introduction.....</b>	<b>1</b>
Overview .....	2
Preventive and Cautionary Tips .....	2
DVR Specifications .....	3
Connecting Your DVR .....	5
Operating Your DVR .....	6
Using the Front Panel Controls .....	6
Using the IR Remote Control .....	10
Using a USB Mouse .....	12
Using the Soft Keyboard .....	13
<b>CHAPTER 2 Getting Started .....</b>	<b>15</b>
Starting and Shutting Down Your DVR .....	16
Rebooting and Locking Your DVR .....	17
Setting Date & Time .....	18
Checking the Status of Your DVR .....	20
<b>CHAPTER 3 Live Feed .....</b>	<b>21</b>
Watching a Live Feed .....	22
Understanding Live Feed Icons .....	22
Operating the Live Feed .....	23
Using the Display Menu .....	25
Configuring Live Feed Displays .....	28
Setting Camera Order .....	29

## **CHAPTER 4Record Settings ..... 31**

### **Configuring Settings for Recording ..... 32**

Configuring Recording Settings ..... 32

Configuring a Quick Recording Schedule ..... 34

Configuring an Advanced Recording Schedule ..... 35

## **CHAPTER 5Playback..... 39**

### **Playing Back a Recording ..... 40**

Understanding the Playback Interface ..... 40

Searching for Recorded Files ..... 41

Playing Back Recorded Files ..... 42

Playing Back Multiple Channels ..... 43

## **CHAPTER 6Backup ..... 45**

### **Backing Up Video Clips ..... 46**

Selecting Video Clips ..... 46

Backing Up Video Clips ..... 48

### **Backing Up Recorded Files ..... 50**

## **CHAPTER 7System Configuration..... 51**

### **Configuring Network Settings ..... 52**

### **Managing User Accounts ..... 54**

Adding a New Remote User ..... 54

Deleting a User ..... 55

Editing a User ..... 56

### **Configuring PTZ Cameras ..... 57**

Configuring Basic PTZ Settings ..... 57

Customizing PTZ Presets, Patterns and Patrols ..... 58

Configuring Alarms and Exceptions .....	61
Setting Up Motion Detection .....	61
Configuring Alarm Inputs .....	63
Configuring Exceptions .....	65
Configuring E-mail Settings .....	67
<b>CHAPTER 8 Camera Management .....</b>	<b>69</b>
Configuring Cameras .....	70
Adding and Removing IP Cameras .....	70
Adding and Removing Analog Cameras .....	71
Setting up Privacy Zones .....	73
Configuring Video Tampering Detection .....	74
Configuring Video Loss Detection .....	76
Configuring OSD Settings .....	78
<b>CHAPTER 9 Disk Management .....</b>	<b>79</b>
Managing Disks .....	80
Checking Disk Status .....	80
Formatting Disk .....	81
Enabling Disk Overwrite .....	82
Managing Files .....	83
Searching for Recorded Files .....	83
Locking and Unlocking Recorded Files .....	84
<b>CHAPTER 10 DVR Management .....</b>	<b>85</b>
Managing System .....	86
Upgrading the System Firmware .....	86

Restoring Default Settings .....	87
Exporting & Importing Configuration .....	87
Viewing System Logs .....	89
Locking and Unlocking System Menus .....	91
<b>Index.....</b>	<b>93</b>

# CHAPTER 1

## Introduction



# Overview

Thank you for your purchase of the RH5xx/RA5xx Series Digital Video Recorder (DVR). To get the most out of your DVR, please read through the *Installation's Manual* and this *User's Manual* thoroughly.

The RH5xx/RA5xx Series DVR, shown in Figure 1 ushers in the next generation of hybrid digital video recording technology from Hikvision. Built on an embedded platform and combining the latest in advanced H.264 video encoding and decoding technologies, the RH5xx/RA5xx contains the perfect combination of rock-solid reliability and high performance. The RH5xx supports both analog and IP-based cameras and can be used as a standalone DVR, hybrid DVR or as an NVR. The RA5xx will only support analog-based cameras.



**Figure 1. RH5xx/RA5xx Series DVR**

## Preventive and Cautionary Tips

Before connecting and operating your DVR, please be advised of the following tips:

- Ensure unit is installed in a well-ventilated, dust-free environment.
- Unit is designed for indoor use only.
- Keep all liquids away from the DVR.
- Ensure environmental conditions meet factory specifications.
- Ensure unit is properly secured to a rack or shelf. Major shocks or jolts to the unit as a result of dropping it may cause damage to the sensitive electronics within the unit.
- Use the DVR in conjunction with an Uninterruptible Power Supply (UPS).

- Power down the unit before connecting and disconnecting accessories and peripherals.

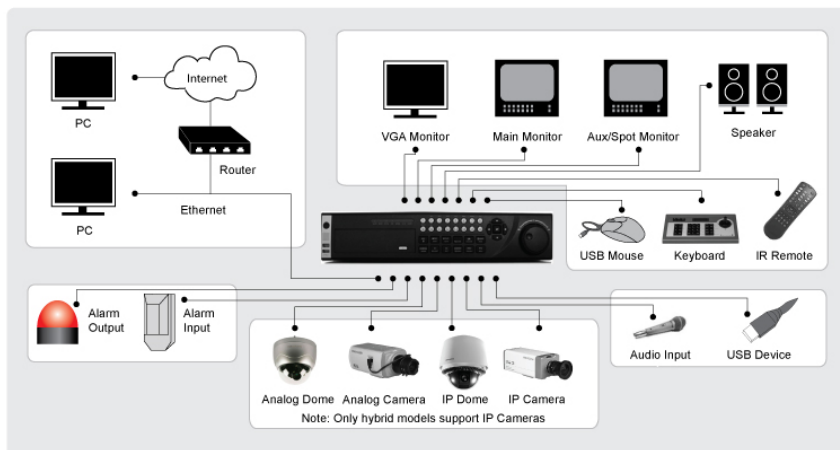
## DVR Specifications

- **Compression:**
  - Each analog channel supports dual stream compression. Main stream supports up to 4CIF resolution and substream supports up to CIF resolution.
  - Each IP channel supports up to HD720P (1280\*720) resolution.
  - Video encoding parameters of each channel can be set separately, including resolution, frame rate, bit rate, image quality.
  - Each channel supports normal and event compression parameters.
  - Supports both composite stream and video only stream. Audio and video streams are strictly synchronized.
  - Supports watermark.
- **Local Functions (Monitoring):**
  - Support three independent local output including VGA, main and spot AUX composite video output.
  - High definition VGA display, max support of 1280\*1024 resolution.
  - Supports 1/4/9/16 screen live view, channel sequence is adjustable.
  - Support live view group switch, manual switch and automatic cycle, the interval of automatic cycle can be adjusted.
  - Supports shielding of an assigned live view channel.
  - Supports various PTZ protocols, PTZ preset, patrol and pattern.
  - Supports multi-level user management, each user can have individual DVR access rights.
  - Supports mouse, front panel, IR control and RS485 surveillance keyboard.
- **Local Functions (HDD Management):**
  - Supports up to 8 SATA HDD, each HDD can support max 2TB capacity.
  - Supports S.M.A.R.T. technology.
  - Supports HDD hibernation function.
  - Supports Windows compatible file system format and technology of pre-allocating hard disk space to avoid HDD fragments.
- **Recording and Playback:**
  - Supports multiple recording types, including manual, continuous, alarm, motion, motion / alarm and motion & alarm recording, etc.
  - Supports 8 recording time periods with separate recording types.

- Supports pre/post-recording time for alarm and motion detection.
- Supports pause, play fast, play slow, skip forward, and skip backward when playback, locating in progress bar by dragging the mouse.
- Supports 4-ch synchronous playback
- **Backup:**
  - Supports USB storage device, SATA CD/DVD backup.
  - Supports backup device maintenance and management.
- **Alarm & Exception:**
  - Unified management of DVR and IP camera (model dependent) alarm input/output.
  - Supports motion detection, network disconnect detection, video output standard mismatch detection.
  - Supports auto recovery from exceptions.
- **Network:**
  - Supports 10/100/1000M adaptive network interface.
  - Supports TCP/IP protocols, DHCP, DNS, DDNS, NTP, and SADP, etc.
  - Supports unicast and multicast, support TCP, UDP, and RTP for unicast.
  - Supports remote search, playback and download video files, support breakpoint resume.
  - Supports remote configuration and import and export of DVR settings.
  - Supports remote acquisition of device status, system log and alarm status.
  - Supports remote button operation and locking/unlocking of panel buttons.
  - Supports remote format of hard disk, upgrade, reboot, shutdown and other system maintenance operations.
  - Supports event alarm and exceptions upload to remote management host.
  - Supports remote user management. Administrator can create and manage remote users and set their privilege.
  - Supports remote instantaneous JPEG capture.
  - Supports remote PTZ control.
  - Supports voice talk and broadcast.
  - Includes built-in WEB Server.
- **Development:**
  - SDK for Windows and Linux environment are available.
  - Demo software source codes are available.
  - Development support and training of application system are available.

# Connecting Your DVR

You may follow the diagram below (Figure 2) in connecting your DVR to its peripherals.



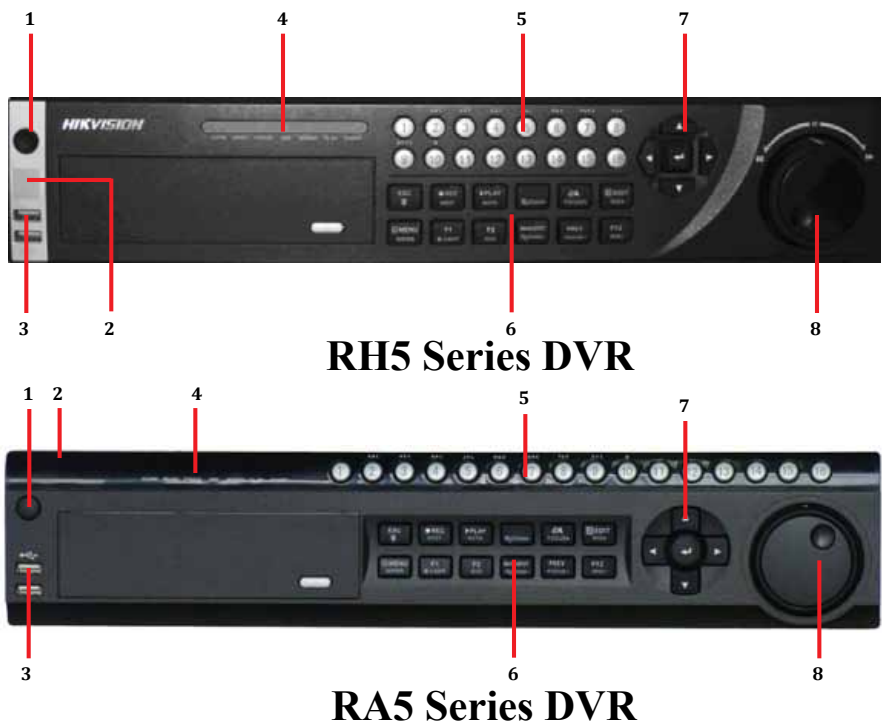
**Figure 2. DVR Connection Diagram**

# Operating Your DVR

There are numerous ways to navigate and operate your DVR. You may use the **Front Panel Controls**, the included **IR (Infra-Red) Remote**, a **Mouse** and the **Soft-Keyboard**.

## Using the Front Panel Controls

Your DVR comes with built-in front panel controls, as shown in Figure 3.



**Figure 3. DVR Front Panel Controls**

The controls on the front panel includes:

- 1. **Power Button:** Powers DVR on/off.
- 2. **IR Receiver:** Receiver for IR remote.

3. **USB Ports:** Universal Serial Bus (USB) ports for additional devices such as USB mouse and USB Hard Disk Drive (HDD).
4. **Status Indicators:** Status indicators for different features of the DVR.
  - **Alarm:** Alarm indicator turns red when a sensor alarm is detected.
  - **Ready:** Ready indicator turns blue when DVR is functioning properly.
  - **Status:** Status indicator turns blue when DVR is controlled by an IR remote. Indicator turns red when controlled by a keyboard and purple when IR remote and keyboard is used at the same time.
  - **HDD:** HDD indicator blinks red when data is being read from or written to HDD.
  - **Modem:** Reserved
  - **TX/RX:** TX/RX indicator blinks blue when network connection is functioning properly.
  - **Guard:** Guard indicator turns blue when the device is armed, off when the device is unarmed. The arm/disarm state can't be initiated by pressing and holding on the ESC button for more than 3 seconds in Preview mode.
5. **Alphanumeric Buttons:** Alphanumeric buttons used in various menus of the DVR. Some uses include:
  - Switching to the corresponding channel in Preview or PTZ Control mode.
  - Inputting numbers and characters in Edit mode.
  - Switching between different channels in Playback mode.
6. **Control Buttons:**
  - **ESC Button:** The ESC button is used to escape to the previous menu and to arm/disarm the DVR in Preview mode.
  - **REC/SHOT Button:** The REC/SHOT button is used to enter the Manual Record interface. If used when controlling a PTZ, pressing the REC/SHOT button and then a Numeric button will call a PTZ preset.
  - **PLAY/AUTO Button:** The PLAY/AUTO button is used to enter the Playback menu. It is also used to turn audio on/off in the Playback menu and auto scan in the PTZ Control menu.
  - **ZOOM+ Button:** The ZOOM+ button is used to zoom the PTZ camera in when in the PTZ Control menu.
  - **A/FOCUS+ Button:** The A/FOCUS+ button is used to adjust focus in the PTZ Control menu. It is also used to switch between input methods (upper and lowercase alphabet, symbols and numeric input). It can also be used to clear entire masked areas, such as in the Motion Detection and Privacy Mask menus.

- **EDIT/IRIS+ Button:** The EDIT/IRIS+ button is used to edit text fields. When editing text fields, it will also function as a Backspace button to delete the character in front of the cursor. On checkbox fields, pressing the EDIT/IRIS+ button will *tick* the checkbox. In PTZ Control mode, the EDIT/IRIS+ button opens up the iris of the camera. In Playback mode, it can be used to generate video clips for backup.
- **MENU/WIPER Button:** Pressing the MENU/WIPER button will return the user to the Main menu (after successful login). Pressing and holding the button for 5 seconds will turn off audible key beep. The MENU/WIPER button will also bring up Sensitivity Interface settings. In PTZ Control mode, the MENU/WIPER button will start the wiper (if applicable).
- **F1/LIGHT Button:** The F1/LIGHT button when used in a list field will select all items on the list. In PTZ Control mode, it will turn on/off PTZ light.
- **F2/AUX Button:** The F2/AUX button is used to cycle through tab pages. It will also bring up the Channel & OSD Position settings.
- **MAIN/SPOT/ZOOM- Button:** The MAIN/SPOT/ZOOM- button is used to switch between main and spot output. In PTZ Control mode, it can be used to zoom the camera out.
- **PREV/FOCUS- Button:** The PREV/FOCUS- button is used to switch between single screen and multi-screen mode. In PTZ Control mode, it is used to adjust the focus in conjunction with the A/FOCUS+ button. It can also be used to select entire masked areas, such as in Motion Detection and Privacy Mask menus.
- **PTZ/IRIS- Button:** The PTZ/IRIS- button is used to enter the PTZ Control mode. When in the PTZ Control mode, it is used to close the iris of the PTZ camera.

## 7. DIRECTION/ENTER Buttons:

- **DIRECTION Buttons:** The DIRECTION buttons are used to navigate between different fields and items in menus. In Playback mode, the Up and Down button is used to fast-forward and rewind recorded video. The Left and Right button will select the next and previous day of recordings. In Preview mode, these buttons can be used to cycle through channels.
- **ENTER Button:** The ENTER button is used to confirm selection in any of the menu modes. It can also be used to tick checkbox fields. In Playback mode, it can be used to play or pause the video. In Single Play mode, pressing the ENTER button will advance the video by a single frame.

**8. JOG SHUTTLE Control:** The JOG SHUTTLE control can be used to move the active selection in a menu. In the Playback mode, the outer ring is used to speed up/slow down the video. The inner ring can be used to jump 30 seconds forward/backwards in a video. In Preview mode, it can be used to cycle through different channels.

**Note:** If GUARD indicator is blue (default), all alarm event and exception settings are valid. Otherwise, alarm event and exception settings will be invalid, but normal recording will still be available.

**Note:** It is important to note that you must click the EDIT button on either the remote or front panel on a text field before you're able to edit its content. After you're done entering text, you must hit the ENTER button to be able to move on to the next field.



# Using the IR Remote Control

Your DVR may also be controlled with the included IR remote control, shown in Figure 4. Batteries (2x AAA) must be installed before operating.

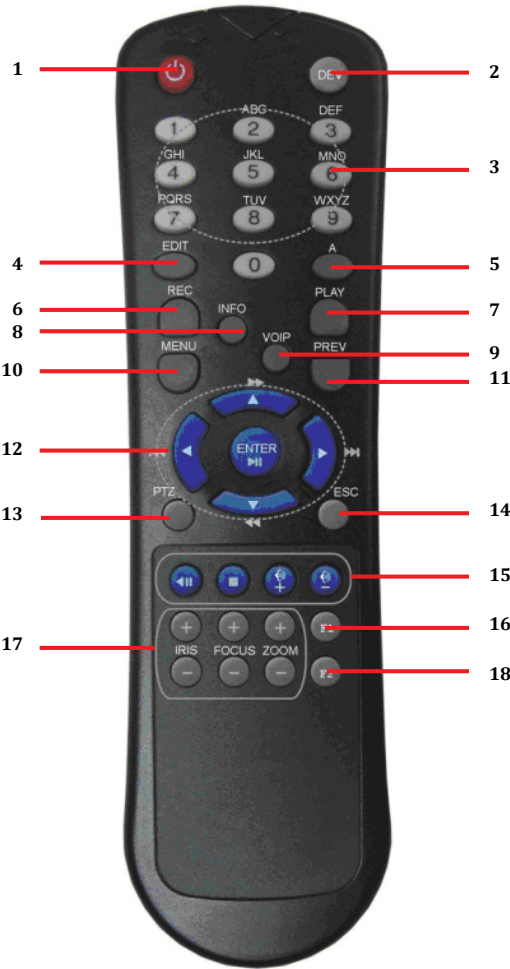


Figure 4. IR Remote Control

The keys on the remote control closely resembles the ones found on the front panel. Referring to Figure 4, they include:

1. **POWER Button:** Same as POWER button on front panel (See page 6).
2. **DEV Button:** Enables/Disables Remote Control.
3. **Alphanumeric Buttons:** Same as Alphanumeric buttons on front panel (See page 7).
4. **EDIT Button:** Same as EDIT/IRIS+ button on front panel (See page 8).
5. **A Button:** Same as A/FOCUS+ button on front panel (See page 7).
6. **REC Button:** Same as REC/SHOT button on front panel (See page 7).
7. **PLAY Button:** Same as PLAY/AUTO button on front panel (See page 7).
8. **INFO Button:** Same as ZOOM+ button on front panel (See page 7).
9. **VOIP Button:** Same as MAIN/SPOT/ZOOM- button on front panel (See page 8).
10. **MENU Button:** Same as MENU/WIPER button on front panel (See page 8).
11. **PREV Button:** Same as PREV/FOCUS- button on front panel (See page 8).
12. **DIRECTION/ENTER Buttons:** Same as DIRECTION/ENTER buttons on front panel (See page 8).
13. **PTZ Button:** Same as PTZ/IRIS- button on front panel (See page 8).
14. **ESC Button:** Same as ESC button on front panel (See page 7).
15. **RESERVED:** Reserved.
16. **F1 Button:** Same as F1/LIGHT button on front panel (See page 8).
17. **PTZ CONTROL Buttons:** Buttons to adjust the iris, focus and zoom of a PTZ camera.
18. **F2 Button:** Same as F2/AUX button on front panel (See page 8).

Aim the remote control at the IR receiver located at the front of the unit to test operation. If there is no response:

1. Using the front control panel or the mouse, go into Main Menu> System Configuration> Display Configuration.
2. Check and remember DVR device No. The default ID# is 255. This ID# is valid for all IR controls.
3. Press the DEV button on the remote.
4. Enter the DVR ID# from step 2.
5. Press the ENTER button on the remote.

If the Status indicator on the front panel turns blue, the remote control is operating properly. If the Status indicator does not turn blue and there is still no response from the remote, please check the following:

1. Batteries are installed correctly and the polarities of the batteries are not reversed.
2. Batteries are fresh and not out of charge.
3. IR receiver is not obstructed.

## Using a USB Mouse

A regular 3-button (Left/Right/Scroll-wheel) USB mouse can also be used with this DVR. To use a USB mouse:

1. Plug USB mouse into one of the USB ports on the front panel of the DVR.
2. The mouse should automatically be detected. If in a rare case that the mouse is not detected, please refer to the recommended device list from your provider.

The buttons on the mouse corresponds to:

### 1. Left Button:

- **Single-Click:** Select a component of a menu, such as a button or an input field. This is similar to pressing the ENTER button on the remote/front panel controls.
- **Double-Click:** Switch between single screen and multi-screen mode in Preview/Playback mode.
- **Click and Drag:** Clicking and dragging the Left mouse button can be used to control the pan/tilt of a PTZ camera as well as to vary the amount of digital zoom. It can also be used to setup the alarm areas.

### 2. Right Button:

- **Single-Click:** Shows pop-up menu.

### 3. Scroll-Wheel:

- **Scroll Up:** In Preview mode, scrolling up will switch to the previous screen. In Menu mode, it will move the selection to the previous item.
- **Scroll Down:** In Preview mode, scrolling down will switch to the next screen. In Menu mode, it will move the selection to the next item.

## Using the Soft Keyboard







When a mouse is used to perform task on the DVR, clicking on a text input field will bring up the Soft Keyboard, shown in Figure 5.



**Figure 5. Soft Keyboard**

---

The buttons on the soft keyboard represents:

	<b>Switch to Lowercase:</b> Switch to lowercase input.
	<b>Switch to Uppercase:</b> Switch to uppercase input.
	<b>Symbols:</b> Switch to symbols input.
	<b>Backspace:</b> Delete the character in front of the cursor.
	<b>Enter:</b> Confirm selection.
	<b>ESC:</b> Exit out of Soft Keyboard.

**Figure 6. Soft Keyboard Buttons**

---



## CHAPTER 2

# Getting Started

# Starting and Shutting Down Your DVR

Proper startup and shutdown procedures are crucial to expanding the life of your DVR.

To startup your DVR:

1. Ensure the power supply is plugged into an electrical outlet. It is HIGHLY recommended that an Uninterruptible Power Supply (UPS) be used in conjunction with the unit. The Power indicator LED on the front panel should turn red, indicating the unit is receiving power.
2. Connect the DVR to a VGA monitor. You will only see the DVR menu system when it's connected to a VGA monitor.
3. Press the POWER switch on the back rear panel. The Power indicator LED should turn blue. The unit will begin to start.
4. After startup, the Power indicator LED will remain blue. A splash screen with the status of the DSP and HDD will be shown (Figure 7). The first row of icons at the bottom of the screen shows the DSP status. If an 'X' is shown on top of an icon, it means that the DSP initialization has failed. The second row of icons at the bottom of the screen will show the HDD status. If an 'X' is shown, it means that the HDD is not installed or can not be detected.



**Figure 7. Startup Splash Screen**

There are two proper ways to shutdown the DVR. To shutdown the DVR:

- **OPTION 1: Standard Shutdown**

1. Enter the Shutdown menu, shown in Figure 8 by going to Main Menu > Maintenance > Shutdown.



**Figure 8. Shutdown Menu**

2. Select the Shutdown button.
  3. Click the Yes button.
- **OPTION 2: Manual Shutdown**
    1. Press and hold the POWER button for 3 seconds.
    2. Enter the administrator's username and password in the dialog box for authentication.
    3. Click the Yes button.

**Note:** Do not press the POWER button again when the system is shutting down.

## Rebooting and Locking Your DVR

While in the Shutdown menu (Figure 8), you may also reboot or lock your DVR. Locking your DVR will return you to the Live Feed mode, which will require the correct administrator password to exit out of it. The Reboot button will reboot your DVR.

To reboot or lock your DVR:

1. Enter the Shutdown menu by going to Main Menu > Maintenance > Shutdown.
2. Select the Lock button to lock the DVR or the Reboot button to reboot the DVR.



# Setting Date & Time

It is extremely important to setup the system date and time to accurately timestamp recordings and events.

To setup date and time:

1. Enter the System Configuration menu by going to Main Menu > System Configuration, as shown in Figure 9.



**Figure 9. System Configuration Menu**

2. Click the Time/Date button to enter the Time/Date menu (Figure 10).



**Figure 10. Time/Date Menu**

3. The current system time and date as well as the time zone will be displayed. Using the directional buttons on the front panel/remote or the mouse, select the correct date, time and time zone.
4. To enable Daylight Savings Time, click and check the **Enable DST** checkbox.
5. To acquire the time and date over an NTP (Network Time Protocol) Server, check the **Synchronize via NTP** server checkbox. You may enter your own NTP server or select from one of the default locations from the list of servers, as shown in Figure 11.



**Figure 11. Time/Date Menu**

6. Click the Save button to save settings and click the Exit button to exit out of the menu. Clicking the Exit button without clicking the Save button will exit the menu without saving.

# Checking the Status of Your DVR

The current status of your DVR can be checked at anytime by going to the Status menu. The Status menu, shown in Figure 12 can be accessed by going to Main Menu > Status.



**Figure 12. Status Menu**

The items that are found on the Status menu includes:

- **Model:** The model number of the DVR.
- **Firmware Version:** The current firmware version installed on the DVR.
- **Encoder Version:** The current encoder version installed on the DVR.
- **System Time:** The current system time.
- **Total Disk Space:** Total disk space of the DVR.
- **Free Disk Space:** Total free disk space of the DVR.
- **Uptime:** The amount of time the DVR has been up and running.
- **Messages:** Displays the overall system status.
- **IP Address:** IP address that is set for the DVR.
- **Subnet Mask:** Subnet mask that is used for the DVR.
- **Default Gateway:** The default gateway that is set on the DVR.
- **DNS Server:** The DNS server that's currently being used on the DVR.
- **DVR Domain Name:** The DVR domain name that is set for the DVR.
- **Client/HTTP Port:** The current ports being used for client and web access.
- **Multicast Address:** The multicast address that's being used on the DVR.
- **Camera Status:** The recording status of the attached cameras. A blue circle denotes that the camera is recording while a gray circle shows that it is not.

# **CHAPTER 3**

## **Live Feed**

# Watching a Live Feed

The Live Feed mode is automatically started after the DVR boots up. It is also at the very top of the menu hierarchy, thus hitting the ESC button multiple times (depending on which menu you're on) will bring you to the Live Feed mode.

## Understanding Live Feed Icons

There are multiple icons on each display in Live Feed mode to indicate different camera status and settings. These icons include:



**Event Icon:** Indicates video loss or tampering, motion detection and/or sensor alarm.



**Record Icon:** Indicates the current channel is recording. The recording may have been started manually, from a schedule, and/or triggered from motion or alarm.



**Picture Settings Icon:** Adjust picture settings for selected display.



**PTZ Control Icon:** Enter PTZ control mode for the selected display.



**Preset Icon:** Recall PTZ preset.



**Patrol Icon:** Recall PTZ patrol.



**Tour Icon:** Recall PTZ tour.



**Zoom In/Zoom Out:** Zoom in/out with PTZ.



**Full Screen/Exit Full Screen Icon:** Enter into/exit out of full screen mode for selected display.



**Audio On/Audio Off Icon:** Enable/disable audio for selected display.



**Close Icon:** Exit out of current setting and return to previous mode.



**Left/Right/Up/Down Icon:** Move PTZ in the selected direction.

**Figure 13. Live Feed Icons**

**Note:** Status for video loss is only valid with analog cameras. Event icons will only be displayed when armed, except for the video loss alarm.

## Operating the Live Feed

In Live Feed mode, you may adjust the settings for individual cameras by left-clicking on the desired display with the mouse. The selected display will be surrounded with a green border, as shown in Figure 14.



**Figure 14. Live Feed Mode**

The settings you may adjust with each display includes:

- **Picture Settings:** Settings for the brightness, contrast, saturation and hue of selected display. To adjust the picture settings of a display:
  1. Select display.
  2. Click the Picture Settings icon. This will bring up the Picture Settings menu, as shown in .Figure 15



**Figure 15. Picture Settings Menu**

3. Increase/decrease amount for brightness, contrast, saturation and hue.  
The affect will be displayed immediately on the screen.
4. Click the Close icon to save the settings and return to the Live Feed mode.
- **PTZ Control:** If the selected camera is a PTZ camera, you may control it directly from the display. To control a PTZ camera:
  1. Select display that corresponds to a PTZ camera.
  2. Click the PTZ Control icon. This will bring up additional PTZ control buttons, as shown in Figure 16.



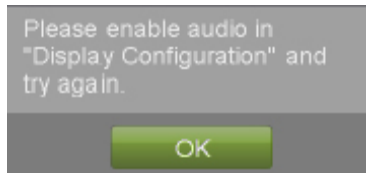
**Figure 16. PTZ Control Mode**

3. Control the PTZ using PTZ control buttons. Pan and tilt PTZ by clicking on the directional buttons. Zoom in and out using the Zoom In/Out buttons and recall presets, patrols and patterns by clicking the number next to the corresponding icons.
4. Click the Close icon to return to Live Feed mode.

**Note:** PTZ parameters for the camera must be set correctly before the PTZ can be controlled.

**Note:** A maximum of five presets, patrols and patterns can be displayed on this interface. More presets, patrols and patterns can be recalled in the PTZ Configuration menu.

- **Audio:** Enable/disable audio for selected display. To enable or disable audio:
  1. Select display to enable/disable audio.
  2. Enable audio by clicking the Enable Audio icon and disable audio by clicking the Disable Audio icon. An error message similar to the one shown in Figure 17 will pop up if the *Enable Audio* option is not selected in the Display Configuration menu for the specified channel.



**Figure 17. Enable Audio Error Window**

---

- **Digital Zoom Mode:** Enable digital zoom on the selected channel. Once enabled, the regular feed will be shown in the lower right corner while the zoomed in view will be shown on the full screen. The zoomed in region may be changed by moving the red rectangle in the regular feed window.
- **Full Screen Mode:** Enable full screen mode for selected display. To enable full screen mode:
  1. Select display to enable full screen on.
  2. Click the Full Screen icon.
  3. Click the Exit Full Screen icon to return to normal display mode.

## Using the Display Menu

The Display Menu can be accessed by right-clicking the mouse on any of the display in Live Feed mode. The Display menu, shown in Figure 18 allows you to quickly change into different display modes and to start/stop auto-switching of the display modes.



**Figure 18. Live Feed Display Menu**

---





**2x2 Mode:** Click to switch to four channel display mode.



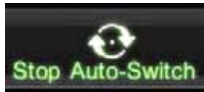
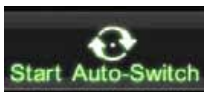
**3x3 Mode:** Click to switch to nine channel display mode.



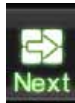
**4x4 Mode:** Click to switch to sixteen channel display mode.



**Main Menu:** Click to go to DVR Main Menu. If **Lock Main Menu** is selected in the Lock Menus menu, you must enter the current Admin Password to exit out of the Live Feed.



**Start/Stop Auto-Switch:** Click to start/stop auto-switch. Auto-switch will cycle through selected cameras. Switching of camera can be on an individual or multiple camera basis.



**Next Set of Display:** Click to view the next set of display. In 2x2 mode, this will show the next four display. In 3x3 mode, this will show the next nine display.

**Note:** In order to use auto-switching of channels, the *dwell time* must be configured in the Display Configuration menu.

**Note:** After 20 seconds of inactivity, the DVR will automatically exit out of the Display menu and go back into the Live Feed mode.

**Note:** The **Lock Main Menu** setting is selected by default, meaning the Admin password must be entered to exit out of the Live Feed into the Main Menu. To change this option and remove the lock to the Main Menu, visit the Lock Menus menu (See ***Locking and Unlocking System Menus*** on page 91).

# Configuring Live Feed Displays

Live Feed displays can be customized to your own needs. These settings can be accessed by entering the Display Configuration menu, shown in Figure 19.



**Figure 19. Display Configuration Menu**

To customize display settings:

1. Enter the Display Configuration menu by going to Main Menu > System Configuration > Display Configuration.
2. Select the **Video Output** to configure. You may configure either the VGA, Main CVBS or Spot CVBS.
3. The settings available to configure for each video output includes:
  - **Screen Configuration:** Screen configuration of each video output. You may select between a 1x1, 2x2 or 4x4 configuration.
  - **Sequencing Dwell Time:** The time in seconds to *dwell* between switching of channels when Start Sequence is selected in Live Feed. Selecting *Disable Switching* will disable switching in Live Feed.
  - **Enable Audio:** Enables/disables audio output for the selected video output.
  - **Output Format:** Designates the video output standard.
  - **Device Name/No.:** Designates the device name and number of the current unit.
  - **VGA Resolution:** Designates the resolution of main VGA display.

- **Mouse Pointer Speed:** Pointer speed of the mouse, the higher the amount, the faster the mouse would move.

## Setting Camera Order

Setting the camera order allows you to logically position cameras for more efficient monitoring of your own individual location.



**Figure 20. Camera Order Setting**

To set the camera order:

1. Enter the Display Configuration menu, shown in Figure 19 by going to Main Menu > System Configuration > Display Configuration.
2. Select the **Video Output** to configure camera order for.
3. Select the **Screen Configuration** you would like to use in Live Feed. The preview of the screen configuration on the right will change depending on the option selected.
4. Each display in the preview of the screen configuration will have a selection box containing a list of the different cameras that are available on the DVR. Pressing the up and down button of each selection box, select the camera you would like to show in the particular display. Selecting 'X' will disable the display.
5. Click the Previous and Next button to go to the next set of displays for the selected screen configuration. For example, in 2x2 screen configuration mode, pressing the Next button will bring up the next set of 4 displays.
6. Click the Save button to Save settings.

7. Repeat steps 2-6 to adjust the camera order for other video outputs.
8. Click the Exit button to exit out of the menu.

**Note:** You must click the Save button after adjusting the order of one video output before you are able to move on to adjust another one.

# **CHAPTER 4**

## **Record Settings**

# Configuring Settings for Recording

There are multiple ways to setup your DVR for recording. They include setting up a recording schedule, triggering a recording by motion detection and/or a sensor alarm, and manually starting the recording.

## Configuring Recording Settings

Before setting your DVR up for recording, certain settings should be configured first. These settings can be found in the Recording Configuration menu, shown in Figure 21.



**Figure 21. Recording Configuration Menu**

The first set of settings to configure in this menu is the recording quality settings. To configure the recording quality settings:

1. Enter the Recording Quality Settings menu by going to Main Menu > Recording Configuration > Recording Quality Settings. The Recording Quality Settings menu is shown in Figure 22.



**Figure 22. Recording Quality Settings Menu**

2. Select the camera to configure in the camera drop down menu on the upper left of the menu. If all cameras are to be configured with the same settings, select *All Cameras* from the list.
3. Select the **Encoding Parameters** mode to configure. Either Continuous or On Event can be selected.
4. Select the camera resolution in the **Resolution** drop down menu. The options for the camera resolution includes 4CIF, DCIF, 2CIF, CIF and QCIF.
5. Select the recording **Frame Rate** to use for the designated camera. A rate of 30 all the way down to 1/16 of a frame can be selected.
6. Set the picture quality using the **Picture Quality** slider. A preview of the selected picture quality will be shown on the right preview screen. Increasing the picture quality will also increase the bit rate of the video feed. The resolution and frame rate of the feed will be adjusted automatically.
7. Select the **Pre-record** time. The pre-record time is the time in seconds to also record before a recording is triggered. Setting the pre-record time to MAX will allow the DVR to use up to the maximum available buffer space for recording.
8. Select the **Post-record** time. The post-record time is the time in seconds to also record after a recording has ended.
9. Enter the **Files Removed After** time. The **Files Removed After** time denotes the amount of days that files will be deleted after its initial recording. Setting the time to 0 will allow the DVR to only delete and overwrite files when the HDD is full.
10. Repeat steps 3-9 for other Encoding Parameters mode.



11. Select the Save button to save the recording quality settings and select Exit to return to the previous menu. Selecting the Exit button without clicking Save will quit out of the menu without saving settings.

## Configuring a Quick Recording Schedule

A quick recording schedule allows you to set one time period per day for recording.

To setup a quick recording schedule:

1. Enter the Quick Schedule Configuration menu, shown in Figure 23 by going to Main Menu > Recording Configuration > Quick Schedule Configuration.



**Figure 23. Quick Schedule Configuration Menu**

2. Select the camera to configure from the camera drop down menu. If all the cameras are to be configured with the same settings, select *All Cameras* from the list.
3. Check the **Enable** checkbox to enable the recording schedule. If the checkbox is unchecked, the recording schedule will be disabled.
4. Check the **24/7** checkbox if you would like to record continuously or on event for 24 hours a day, 7 days a week. If you wish to schedule different time frames for Monday through Sunday, leave the **24/7** checkbox unchecked and skip to step 6.
5. Select **Recording Type** for 24/7 recording and move on to step 8. Recording type includes *Continuous* for continuous recording or *On Event* for recording when an event is triggered (i.e. from detected motion).

6. Select the start and stop time for each day of the week. The start and stop time are listed using a 24 hr cycle (i.e. 18:00 is equivalent to 6:00pm).
7. Select **Recording Type** for each day of the week. Recording type includes *Continuous* for continuous recording or *On Event* for recording when an event is triggered (i.e. from detected motion) for the selected time period.
8. Check the **Enable Audio** checkbox if you would like to enable audio recording along with the video. Audio can only be recorded if an audio source (such as a microphone) is connected to the DVR.
9. Select the Save button to save the schedule settings and select Exit to return to the previous menu. Selecting the Exit button without clicking Save will quit out of the menu without saving settings.

**Note:** *On Event* recordings are recordings that are triggered from motion detection and/or from an external alarm (See **Configuring Alarms and Exceptions** on page 61).

**Note:** If an event occurs during *Continuous* recording, the frame rate will automatically switch to that set for *Event* recording.

## Configuring an Advanced Recording Schedule

An advanced recording schedule allows you to schedule multiple time periods per day for recording as oppose to a single time period of a quick recording schedule. Setting up an advanced recording schedule will allow you to further conserve disk space by recording only during the time periods you would like to record at.

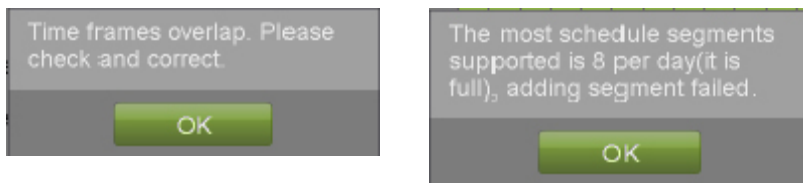
To setup an advanced recording schedule:

1. Enter the Advanced Schedule Configuration menu, shown in Figure 24 by going to Main Menu > Recording Configuration > Advanced Schedule Configuration.



**Figure 24. Advanced Schedule Configuration Menu**

2. Select the camera to configure from the camera drop down menu. If all the cameras are to be configured with the same settings, select *All Cameras* from the list.
3. Check the **Enable** checkbox to enable the recording schedule. If the checkbox is unchecked, the recording schedule will be disabled.
4. Select a day between Monday to Sunday to configure schedule for.
5. Setup time periods for schedule. If the **24HR** checkbox is checked, recording will occur over the entire day. To setup multiple time periods, uncheck **24HR** and enter the **Start** and **Stop Time** for the selected day. The start and stop time are listed using a 24 hr cycle (i.e. 18:00 is equivalent to 6:00pm).
6. Select recording type under **Type** for selected day of the week. Recording type includes *Continuous* for continuous recording or *On Event* for recording when an event is triggered (i.e. from detected motion) for the selected time period.
7. If there are scheduling errors detected, such as overlapping time periods, error messages such as those shown in Figure 25 will appear.



**Figure 25. Advanced Schedule Configuration Error Messages**

8. Check the **Enable Audio** checkbox if you would like to enable audio recording along with the video. Audio can only be recorded if an audio source (such as a microphone) is connected to the DVR.
9. Select the Add button to add time frame to schedule. The newly added time frame will appear in the schedule on the left, with the schedule parameters shown on the right. Continuous recordings are shown in blue on the schedule while event recordings are shown in yellow. An example of this can be seen in Figure 26.



**Figure 26. Advanced Schedule Configuration Example**

10. Repeat steps 4-10 to setup additional time periods for the selected day.
11. Select the Save button to save the schedule settings and select Exit to return to the previous menu. Selecting the Exit button without clicking Save will quit out of the menu without saving settings.

**Note:** Creating a schedule in the Quick Schedule Configuration menu will also create a schedule in Advanced Schedule Configuration. The quick schedule will show up as a time period in the Advanced Schedule Configuration.



# CHAPTER 5

## Playback

# Playing Back a Recording

Previously recorded files can be played back using the Playback Interface. You must first search for recordings to play them back.

## Understanding the Playback Interface

It's important to understand how to use the Playback Interface to efficiently navigate through recorded files. To access the Playback Interface, shown in Figure 27, go to Main Menu > Playback.



**Figure 27. Playback Interface Menu**

Some of the main features of the Playback Interface includes:

- **Channel Selector:** Select the channel to search for recordings on.
- **Calendar:** Select the date to search for recordings on.
- **Timeline:** Select the time to search for recordings on.
- **Preview:** Shows a preview of the selected recording.
- **Playback Controls:** Controls for playback of the selected recording.
- **Clip Backup Tools:** Tools to backup clips from a recording.
- **Clip Playback Controls:** Controls for playback of marked clip.

# Searching for Recorded Files

The Playback Interface allows for easy searching of recorded files. To search for recorded files using the Playback Interface:

1. Enter the Playback menu, shown in Figure 27 by going to Main Menu > Playback.
2. Select the channel to search for recordings on.
3. Select the date to search for recordings on using the calendar. The system date is shown at the top of the calendar. You may change the month and year of the calendar by clicking the left and right arrows next to the month and year. Dates with recordings in the selected month and channel are displayed in light blue, while dates without recordings are dark gray. The active selected date is displayed in light gray, as shown in Figure 28.



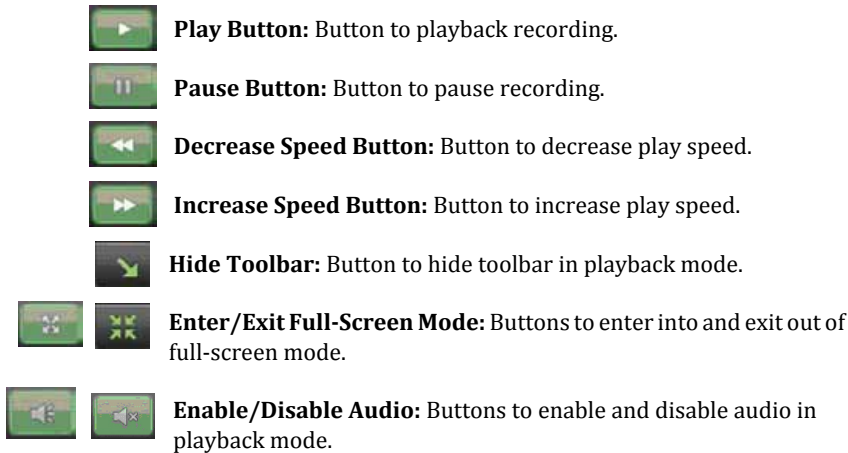
**Figure 28. Playback Menu Example**

4. Click on the desired date that is highlighted in light blue to search for recordings. If recordings exist, the timeline will be filled with blue bars to designate recorded files. The playback marker, indicated by a green vertical line will automatically jump to the beginning of the earliest recordings for the selected date. The marker can be moved to any other location by clicking on the desired position on the blue bars.
5. Select the Play button in the Playback Controls to start playback of the recording.



# Playing Back Recorded Files

After finding the recordings you would like to playback (See *Searching for Recorded Files* on page 41), you may use the Playback Controls to navigate through the recording. The controls found under Playback Controls include:



**Figure 29. Playback Control Buttons**

To playback recorded files:

1. Search and select recording to playback in the Playback Interface.
2. Click the Play button to begin playback of selected recording and the Pause button to pause playback.
3. You may slow down or speed up the playback speed by clicking the Decrease Speed/Increase Speed button.
4. Click the Full-Screen button to enter full-screen playback mode, shown in Figure 30.



**Figure 30. Full-Screen Playback Mode**

5. In full-screen mode, you may hide the toolbars by clicking the Hide Toolbar button. Clicking the Exit Full-Screen button will return you to the original playback mode.
6. Click the Enable/Disable Audio button to turn on and off audio during playback.
7. Click the Digital Zoom button to enable digital zoom. Once enabled, the regular recorded feed will be shown in the lower right corner while the zoomed in view will be shown on the full screen. The zoomed in region may be changed by moving the red rectangle in the regular recorded feed window.
8. Click the Exit button to return to the previous menu.

## Playing Back Multiple Channels

You may also playback recordings from multiple channels simultaneously. To playback recordings from multiple channels:

1. Search and select recording to playback in the Playback Interface.
2. Enter into Full-Screen mode, shown in Figure 30 by clicking the Full-Screen button.
3. In Full-Screen mode, you may select additional channels to playback by clicking the checkbox next to the desired camera in the Channel Selector panel. Playback will begin simultaneously on the selected channels.

4. You may stop playback on any of the channels by unchecking the checkbox next to the channel.

**Note:** Up to 4 channels can be played back at the same time.

# CHAPTER 6

## Backup

# Backing Up Video Clips

Video clips can be backed up to various devices, such as USB flash drives, USB HDDs or a DVD writer.

## Selecting Video Clips

Video clips can be selected for backup in the Playback Interface using the controls found in the *Mark Clip For Backup* panel, shown in Figure 31.



**Figure 31. Mark Clip For Backup Controls**

The controls found in the *Mark Clip For Backup* panel includes:

- **Start Clip Button:** Mark the starting point for the video clip.
- **Stop Clip Button:** Mark the ending point for the video clip.
- **Play Clip Button:** Play the selected video clip.
- **Save Clip Button:** Save the selected video clip to the HDD.
- **Clear Clip Button:** Clear the selected video clip.

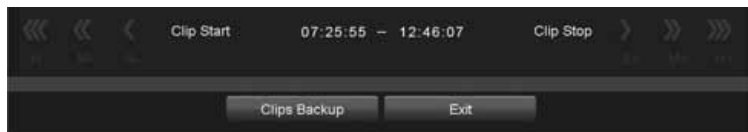
To select video clips in the Playback Interface:

1. Enter the Playback Interface, shown in Figure 32 by going to Main Menu > Playback.



**Figure 32. Playback Menu**

2. Search for the recorded files that you would like to select video clips from (See *Searching for Recorded Files* on page 41). Video clips can only be selected in single playback mode.
3. Select the starting position of the video clip by clicking the desired location on the blue recordings bar.
4. Click the Start Clip button.
5. Select the ending position of the video clip.
6. Click the stop Clip button.
7. The selected video clip time range will be shown at the bottom of the Playback Interface, as seen in Figure 33.



**Figure 33. Video Clip Time Range**

8. You may play the video clip using the Play Clip button or use the arrow keys shown next to the clip time range to progress through the video one second, minute or hour at a time.
9. Click the Save Clip button to save clip to the DVR. Clip must be first saved to the DVR before it can be backed up to an external USB storage device or to a DVD writer. Clicking the Clear Clip button will remove the video clip.

10. Repeat steps 2-7 to select additional clips. If you would like to backup video clips at this point, click the Backup button.

**Note:** The Play Clip, Save Clip and Clear Clip buttons are not available unless a completed video clip is selected. A completed video clip has a start and end point marked by using the Start Clip and End Clip button.

**Note:** The Start Clip button is not available when there is still a video clip that has not been saved or cleared.

## Backing Up Video Clips

After video clips have been selected in the Playback Interface (See *Selecting Video Clips* on page 46), you may back them up to an external USB storage device or DVD writer by going to the Backup menu.

To backup video clips:

1. Enter the Clips Backup menu, shown in Figure 34 by first going to Main Menu > Playback. In the Playback menu, click the Clips Backup button.

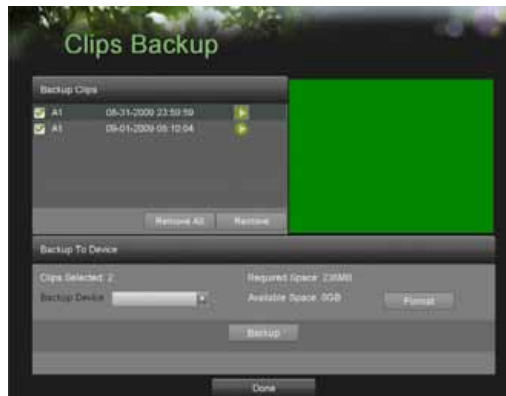


Figure 34. Clips Backup Menu

2. If video clips were successfully saved to the HDD using the Playback Interface, they will be listed under the **Backup Clips** heading on the left hand side of the menu. The camera number as well as the time range would be listed.

3. Select the video clips you would like to backup by checking the checkbox next to the desired clips. You may also click the Play icon to play and review the clip. Video clips can be deleted by selecting it and clicking the Remove button or by clicking the Remove All button to delete all clips.
4. Connect at least one USB storage device to the DVR. If the device is compatible with the DVR, it will automatically be detected. Select the backup device from the **Backup Device** drop down menu.
5. The **Clips Selected**, **Required Space** and **Available Space** will be displayed on the Clips Backup menu. If the USB storage device has not been properly initialized and formatted, you may click on the Format button to do so. It is important to note that formatting will delete ALL data from the storage device.
6. If the available space on the storage device is adequate, select the Backup button to begin backup of the selected clips.
7. After clips have been backed up, you may click the Playback button to return to the Playback Interface or the Done button to return to the previous menu.

**Note:** Formatting a storage device will permanently delete all the files on that device. There is also NO WARNING MESSAGE after clicking the Format button to format the storage device. Please proceed with caution and backup all critical data from the storage device before formatting.

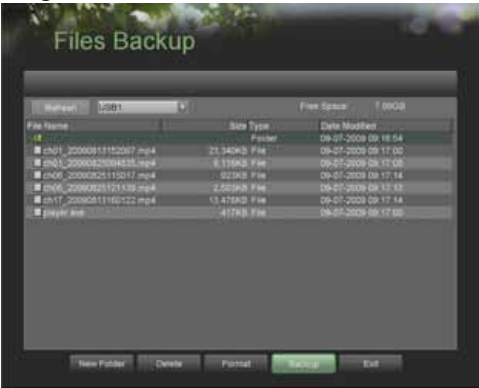


# Backing Up Recorded Files

Not only can video clips be backed up, full recorded files can also be backed up to a storage medium.

To back up recorded files:

1. Search for recorded files using the File Management menu (See *Searching for Recorded Files* on page 83).
2. Select the files you would like to backup by checking the box next to the file. You may also check the *All File* box to backup all files. The total required space will be shown next to **Total Size**.
3. Click the Files Backup button, this will take you to the Files Backup menu, as shown in Figure 35.



**Figure 35. Files Backup Menu**

4. In the Files Backup menu, connect a USB storage device and click the Refresh button. If the device is detected, a list of its file contents as well as the available free space will be shown.
5. You may delete files on the USB storage device to free up additional storage space by clicking the Delete button on the selected file. You may also format the device by clicking the Format button. Formatting will remove ALL files from the device.
6. When there is sufficient storage space for backup, click the Backup button. A backup progress bar will be shown.
7. Click the OK button once backup has completed.
8. Click the Exit button to return to the File Management menu.

# **CHAPTER 7**

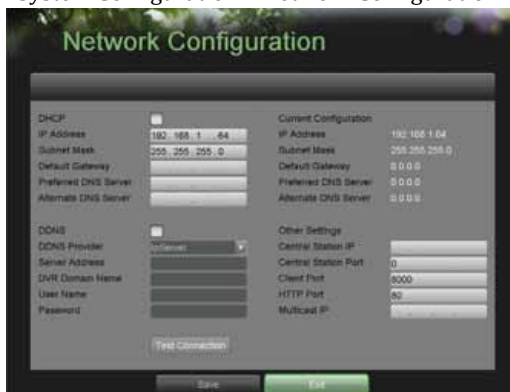
## **System Configuration**

# Configuring Network Settings

Network settings must be configured before you're able to use your DVR over the network.

To configure network settings:

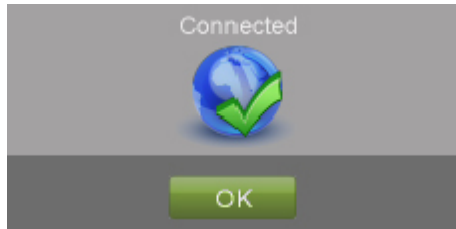
1. Enter the Network Configuration menu, shown in Figure 36 by going to Main Menu > System Configuration > Network Configuration.



**Figure 36. Network Settings Menu**

2. The current network settings are displayed on the right side of the menu.
3. If you have a DHCP server running and would like your DVR to automatically obtain an IP address and other network settings from that server, check the **DHCP** checkbox.
4. If you would like to configure your own settings, enter the settings for:
  - **IP Address:** IP address you would like to use for your DVR.
  - **Subnet Mask:** Subnet Mask of network.
  - **Default Gateway:** IP address of your Gateway. Typically the IP address of your router.
  - **DNS Server:** The preferred and alternate Domain Name System (DNS) Server to be used with your DVR.
5. To enable Dynamic DNS (DDNS), check the **DDNS** checkbox. Dynamic DNS allows you to create a hostname and associate it to your IP address, making access to your DVR over the internet easier. To configure DDNS:
  1. Enable DDNS by checking the **DDNS** checkbox.
  2. Select a DDNS provider from the **DDNS Provider** selection box.

3. Enter settings for **Server Address**, **DVR Domain Name**, **User Name**, and **Password**.
6. If a central monitoring station that is compatible with your DVR is available, you may enter its settings under **Central Station IP** and **Central Station Port**.
7. Enter the **Client Port** and **HTTP Port** to be use with your DVR. The client port designates the port to be use with the client software while the HTTP port refers to the one to be use with the built-in Web Server.
8. After all settings have been configured, you may test the connection by clicking the Test Connection button. A confirmation message, similar to the one shown in Figure 37 will pop up if the network is working properly.



**Figure 37. Test Connection Confirmation**

9. Select the Save button to save the network settings and select Exit to return to the previous menu. Selecting the Exit button without clicking Save will quit out of the menu without saving settings.

# Managing User Accounts

By default, your DVR comes with one user account, the *Administrator* account. The *Administrator* user name is *admin* and the password is *12345*. The default password for *Administrator* should be changed right away for security reasons. The *Administrator* has the authority to add, delete or configure parameters for many of the system functions.

## Adding a New Remote User

You may add up to 31 new remote users to your DVR. To add new remote users:

1. Enter the Remote User Settings menu, shown in Figure 38 by going to Main Menu > System Configuration > Remote User Settings.



Figure 38. Remote User Settings Menu

2. Under **Remote Users List**, click on *Select this entry to add new user*.
3. Once a new entry has been selected, the fields under **Users** will become editable. Enter the information for **Name**, **Password** and **Verify**.
4. In the **Remote Permissions** panel, select the functions that you would like to give the user access to remotely. You may also check the **All** checkbox to give full control to the selected remote user. These functions include:
  - **Log Search:** View logs that are saved on the DVR.
  - **Serial Port Control:** Configure settings for RS232 and RS485 ports.
  - **Two-Way Audio:** Ability to use two-way radio between the remote client and the DVR.

- **Advanced Control:** Manage hard disk drives (initializing and setting properties for HDDs). Ability to remote update system firmware and stopping of the relay output.
  - **Live View:** Access the Live Feed.
  - **PTZ Control:** Control PTZ cameras.
  - **Configuration:** Configure parameters, restore parameters to factory defaults and import settings to as well as export settings from DVR.
  - **Video Output Control:** Configure settings for video output.
  - **Alarm Control:** Alert or control the relay output of the DVR. Alarm and exception settings must be configured properly to upload to host.
  - **Shutdown/Reboot:** Shutdown or reboot the DVR.
  - **Playback:** Playback recordings remotely.
  - **Camera Management:** Enable and disable analog channels. Add and delete IP cameras.
  - **All:** Full permission to use all functions.
5. Click the Save button to save user settings and click Done to return to the previous menu.

**Note:** If you forget the password to your DVR, contact your supplier with the serial number of your DVR to obtain a secure code to reset your DVR.

**Note:** The password of the Admin user can be modified in the Lock Menus menu (See *Locking and Unlocking System Menus* on page 91).

## Deleting a User

To delete a user from the DVR:

1. Enter the Remote User Settings menu, shown in Figure 38 by going to Main Menu > System Configuration > Remote User Settings.
2. Select a user to delete in the **Remote Users List** panel.
3. Click the Remove button to delete user.
4. Click the OK button to confirm deletion of user.
5. Click the Done button to exit menu.

# Editing a User

To edit a user:

1. Enter the Remote User Settings menu, shown in Figure 38 by going to Main Menu > System Configuration > Remote User Settings
2. Select a user to edit in the **Remote Users List** panel.
3. Edit user information in the **Users** and **Remote Permissions** panel. Remote permissions are defined above in ***Adding a New Remote User*** on page 54.
4. Click the Done button to exit menu.

# Configuring PTZ Cameras

## Configuring Basic PTZ Settings

Settings for a PTZ camera must be configured before it can be used. Before proceeding, verify that the PTZ and RS-485 of the DVR are connected properly.

To configure PTZ settings:

1. Enter the PTZ Configuration menu, shown in Figure 42 by going to Main Menu > System Configuration > PTZ Configuration.



**Figure 39. PTZ Configuration Menu**

2. Select the **Serial Settings** tab.
3. Select the camera to configure in the camera drop down menu on the upper left of the menu. If all cameras are to be configured with the same settings, select *All Cameras* from the list.
4. Configure PTZ settings, including those of **Baud Rate, Data Bit, Stop Bit, Parity, Flow Ctrl, Protocol** and **Address** according to the parameters of the PTZ camera(s).
5. Click the Save button to save current settings.

To test and verify PTZ settings:

1. Enter the PTZ Configuration menu, shown in Figure 42 by going to Main Menu > System Configuration > PTZ Configuration.



2. Select the **On Camera Settings** tab. This will open up the On Camera Settings menu, shown in Figure 40.



**Figure 40. PTZ Configuration Menu > On Camera Settings Menu**

3. Select the camera to test in the camera drop down menu.
4. Using the Directional buttons and other PTZ control buttons (Zoom In/Out, Focus In/Out, Iris In/Out), test the functionality of the PTZ camera. If PTZ camera and protocol supports it, you may also click the Auto-Scan button to test its function. PTZ controls buttons are shown in Figure 41.



**Figure 41. PTZ Controls Button**

5. If PTZ camera is not working properly, make sure PTZ is connected and configured with the correct settings under the **Serial Settings** tab.
6. Click Done to exit and return to the previous menu.

## Customizing PTZ Presets, Patterns and Patrols

Your DVR allows you to customize presets, patterns and patrols for a connected PTZ camera. A PTZ camera must first be configured before PTZ presets, patterns and patrols can be customized (See **Configuring Basic PTZ Settings** on page 57).

To customize PTZ presets:

1. Enter the PTZ Configuration menu, shown in Figure 42 by going to Main Menu > System Configuration > PTZ Configuration.
2. Select the **On Camera Settings** tab.
3. Select **Save Presets** and move the camera to the desired position using the PTZ control buttons.
4. Double-click on a preset number in the upper left corner of the screen. The current position of the PTZ camera will be set for the selected preset number.
5. To test the newly configured preset, first move the PTZ camera to a different position. Select **Recall Presets** and click on the preset number. The camera should move to the location that was set for the selected preset number.
6. Click the Done button to exit out of the PTZ Configuration menu.

**Note:** Only the first 23 presets are shown in the table. To save or recall more presets, click on the “...” button. Clicking the “...” button will bring up a selection list for presets up to 200.

To customize PTZ patterns:

1. Enter the PTZ Configuration menu, shown in Figure 42 by going to Main Menu > System Configuration > PTZ Configuration.
2. Select the **On Camera Settings** tab.
3. Select a **Pattern Number** to set from the drop down list.
4. Click the Record button to begin recording the movement of the PTZ.
5. Move the PTZ to the desired locations using the PTZ control buttons.
6. Click the Save button to save pattern.
7. To test out your new pattern, click the Play button. The PTZ should move as it did during the recording process. You may click the Stop button at any time to end the pattern. Clicking the Play button again will start playing the PTZ pattern again at the initial position.
8. Click the Done button to exit out of the PTZ Configuration menu.

To customize PTZ patrols:

1. Enter the PTZ Configuration menu, shown in Figure 42 by going to Main Menu > System Configuration > PTZ Configuration.
2. Select the **On Camera Settings** tab.
3. Select a **Patrol Number** to set from the drop down list.
4. Select a **Preset Number** that is next to the **Patrol Number** from the drop down list that you would like to add to the patrol.

5. Click the Add button. The **Preset Number** will be added to the patrol list.
6. Repeat steps 4-5 until you have included all the presets you would like to have on the patrol.
7. Click the Up and Down button at the bottom of the list to change the order of the presets in the patrol.
8. To test out your new preset, click the Play button. The PTZ should move through the list of added presets.
9. Click the Done button to exit out of the PTZ Configuration menu.

# Configuring Alarms and Exceptions

## Setting Up Motion Detection

Set up properly, using motion detected recording will increase the number of days your DVR is able to record. It will only record relevant events rather than everything, which will also make searching for events easier.

To set up motion detection:

1. Enter the Motion Detection Settings menu, shown in Figure 42 by going to Main Menu > Recording Configuration > Motion Detection Settings.



Figure 42. Motion Detection Settings Menu

2. Select the camera to configure in the camera drop down menu on the upper left of the menu. If all cameras are to be configured with the same settings, select *All Cameras* from the list.
3. Check the **Enable Motion Detection** checkbox to enable motion detection for the selected camera. Uncheck the checkbox to disable motion detection.
4. Set the motion detection sensitivity by adjusting the green **Sensitivity** bar. The more lime green rectangles selected in the bar, the higher the sensitivity will be to motion.
5. Set the motion detection region in the preview screen on the right side of the menu by left-clicking with the mouse on an open area. A red grid will be shown, designating that the selected area is part of the motion detection region. Dragging or left-clicking on areas that overlap the current selected

motion detection area will include them into the region. You may also click the Full Screen button to include the whole area into the motion detection region. Left-clicking on any part of the grid will remove that section from the motion detection region.

6. If you're not satisfied with the selected region, you may click the Clear button to reset the motion detection area.
7. Select the **Actions** to take if motion is detected in the designated regions. More than one action can be selected. The actions available includes:
  - **Sound Audio Warning:** DVR will sound an audio warning if motion is detected in the designated regions of the camera.
  - **Pop-up Image on Monitor:** DVR will show an image of what caused the motion on the monitor.
  - **Notify Surveillance Center:** DVR will notify surveillance center when motion is detected.
  - **Send Email:** DVR will send an email out to the designated recipients when motion is detected.
  - **Trigger Alarm Output:** DVR will trigger alarm output when motion is detected. Selecting this option will enable the Alarm Output list, where the output to trigger can be selected.
8. Select the Save button to save the motion detection settings and select Exit to return to the previous menu. Selecting the Exit button without clicking Save will quit out of the menu without saving settings.

# Configuring Alarm Inputs

Recordings can also be triggered from an external sensor alarm device. To setup recording triggers from alarm inputs:

1. Enter the Trigger Settings menu, shown in Figure 43 by going to Main Menu > Recording Configuration > Trigger Settings.



Figure 43. Trigger Settings Menu

2. Select the **Recording Triggers** tab.
3. Select the camera to configure in the camera drop down menu on the upper left of the menu. If all cameras are to be configured with the same settings, select *All Cameras* from the list.
4. Check the **Enable Trigger Events** checkbox to enable trigger events for the selected camera. Uncheck the checkbox to disable trigger events.
5. Select the trigger inputs that you would like to associate with the selected camera.
6. Select the Save button to save the trigger settings and select Exit to return to the previous menu. Selecting the Exit button without clicking Save will quit out of the menu without saving settings.

Certain actions can also be performed if an alarm input is triggered. To setup trigger actions:

1. Enter the Trigger Settings menu, shown in Figure 43 by going to Main Menu > Recording Configuration > Trigger Settings.

2. Select the **Trigger Actions** tab, this will take you to the Trigger Actions sub-menu, shown in Figure 44.



**Figure 44. Trigger Actions Sub-Menu.**

3. Select the alarm input to configure in the **Alarm Input No.** drop down menu on the upper left of the menu. If all alarm inputs are to be configured with the same settings, select *All* from the list.
4. Select the **Trigger Action** for the external alarm input device. *Normal Open* or *Normal Close* can be selected.
5. Select the **PTZ Actions** (only if a PTZ camera is configured on the DVR) to run when the alarm input is triggered. Only one PTZ action can be selected per alarm input.
6. Select the **Actions** to run when the alarm input is triggered. Multiple actions can be selected per alarm input. The actions available includes:
  - **Sound Audio Warning:** DVR will sound an audio warning if alarm is triggered.
  - **Pop-up Image on Monitor:** DVR will show the corresponding channel that is associated with the trigger input.
  - **Notify Surveillance Center:** DVR will notify surveillance center when alarm is triggered.
  - **Send Email:** DVR will send an email out to the designated recipients when alarm is triggered.
  - **Trigger Alarm Output:** DVR will trigger alarm output when input is triggered. Selecting this option will enable the Alarm Output list, where the output to trigger can be selected.

7. Select the Save button to save the trigger settings and select Exit to return to the previous menu. Selecting the Exit button without clicking Save will quit out of the menu without saving settings.

## Configuring Exceptions

Actions can also be triggered when the DVR detects certain exceptions. To setup exception configuration:

1. Enter the Exception Configuration menu, shown in Figure 45 by going to Main Menu > System Configuration > Exception Configuration.



Figure 45. Exception Configuration Menu

2. Select the **Exception Type** to configure. The exception type includes:
  - **HDD Full:** If selected, trigger action when HDD is full.
  - **HDD Error:** If selected, trigger action when errors on the HDD are detected.
  - **Network Failure:** If selected, trigger action when a network failure is detected.
  - **IP Conflict:** If selected, trigger action if an IP conflict is detected.
  - **Illegal Login:** If selected, trigger action when illegal logins are detected.
  - **Video Exception:** If selected, trigger action when an exception such as distorted video is detected.
  - **Video Output Standard Mismatch:** If selected, trigger action when video output standard does not match.
3. Select the **Actions** to take when the exception is detected. More than one action can be selected. The actions available includes:



- **Sound Audio Warning:** DVR will sound an audio warning if exception is detected.
  - **Notify Surveillance Center:** DVR will notify surveillance center if exception is detected.
  - **Send Email:** DVR will send an email out to the designated recipients if exception is detected.
  - **Trigger Alarm Output:** DVR will trigger alarm output if exception is detected. Selecting this option will enable the Alarm Output list, where the output to trigger can be selected.
4. Select the Save button to save the exception settings and select Exit to return to the previous menu. Selecting the Exit button without clicking Save will quit out of the menu without saving settings.

# Configuring E-mail Settings

If you would like to have the DVR send out e-mails when certain events are detected or exceptions have been triggered, you must first setup the e-mail settings.

To setup e-mail settings:

1. Enter the Email Configuration menu, shown in Figure 46 by going to Main Menu > System Configuration > Email Configuration.



**Figure 46. Email Configuration Menu**

2. Under **Server Information**, enter all pertinent email information, including:
  - **Server Authentication:** Enable if email server requires authentication. Enabling Server Authenticating will enable the User Name and Password fields.
  - **User Name:** User name to use for server authentication.
  - **Password:** Password to use for server authentication.
  - **SMTP Server:** Address for SMTP server.
  - **SMTP Port:** Port for SMTP server.
  - **From Email Address:** The *From* address to use when an e-mail is sent out from the DVR.
  - **Attach JPEG:** Enabling will attach a small JPEG segment (duration can be set next to the Attach JPEG checkbox) to the out-going e-mail.
  - **SSL:** Enable Secure Sockets Layer (SSL) for out-going e-mail.
3. Enter **To E-mail Address** and click the Add button. The e-mail address will be added to the **Recipients List**.

4. You may now test the e-mail settings by clicking the Test button or remove an e-mail address off the **Recipients List** by selecting the recipient and clicking Remove.
5. Select the Save button to save the e-mail settings and select Exit to return to the previous menu. Selecting the Exit button without clicking Save will quit out of the menu without saving settings.

# CHAPTER 8

## Camera Management

# Configuring Cameras

## Adding and Removing IP Cameras

Depending on the model of your DVR, IP cameras can be setup and used in conjunction with regular analog cameras. Before configuring IP cameras, please ensure the network settings for your DVR is properly setup.

To manage IP cameras:

1. Enter the Add/Remove Cameras menu, shown in Figure 47 by going to Main Menu > Cameras Setup > Add/Remove Cameras.



**Figure 47. Add/Remove Cameras**

2. Select the **IPC** tab.
3. Click the Discover button to automatically detect connected IP cameras on the network.
4. If the detected IP cameras and DVR are not on the same subnet, you can modify the cameras' **IP Address**, **Manage Port**, **Protocol** and **Administrator Password**.
5. Click the Test Connection button to test if the IP camera was connected successfully or not.
6. Click the Add button to add the IP camera to the **Added Cameras** list, as shown in Figure 48.



**Figure 48. Add/Remove Cameras > IPC Menu**

7. Once an IP camera has been added to the **Added Cameras** list, you may remove the camera by clicking the Trashcan icon or view the camera by clicking the Play icon.
8. Click the Done button to save settings and return to the previous menu.

## Adding and Removing Analog Cameras

Analog cameras can also be enabled and disabled in the Add/Remove Cameras menu.

To manage analog cameras:

1. Enter the Add/Remove Cameras menu, shown in Figure 47 by going to Main Menu > Cameras Setup > Add/Remove Cameras.
2. Select the **Analog** tab. This will open the Analog Camera Management menu, shown in Figure 49.



**Figure 49. Add/Remove Cameras > Analog Menu**

3. To enable a camera, check the box below the camera number. To disable a camera, uncheck the box. You may also check and uncheck All to enable and disable all cameras.
4. Select the Save button to save the camera settings and select Exit to return to the previous menu. Selecting the Exit button without clicking Save will quit out of the menu without saving settings.

# Setting up Privacy Zones

Privacy zones can be setup to mask off sensitive or private areas in the field of view of a camera.

To setup privacy zones:

1. Enter the Privacy Zones menu, shown in Figure 50 by going to Main Menu > Camera Setup > Privacy Zones.



**Figure 50. Privacy Zones Menu**

2. Select the camera to setup privacy zones in using the camera drop down menu on the upper left of the menu. If all cameras are to be configured with the same settings, select *All Cameras* from the list.
3. Click **Enable Privacy Zones**.
4. Up to four privacy zones can be used per camera and are shown using four different colors, yellow, green, blue and pink. Using the mouse, click and drag out rectangular boxes defining the desired zones.
5. You may clear a privacy zone at any time by clicking on the corresponding Clear Zone button or Clear All button to clear all zones.
6. Select the Save button to save the privacy zones settings and select Exit to return to the previous menu. Selecting the Exit button without clicking Save will quit out of the menu without saving settings.



# Configuring Video Tampering Detection

Video tampering detection can be used to recognize if an area of a camera is purposely covered and to respond accordingly.

To configure video tampering detection:

1. Enter the Video Tampering Detection menu, shown in Figure 51 by going to Main Menu > Camera Setup > Video Tampering Detection.



**Figure 51. Video Tampering Detection Menu**

2. Select the camera to setup video tampering detection in using the camera drop down menu on the upper left of the menu. If all cameras are to be configured with the same settings, select *All Cameras* from the list.
3. Click **Enable Video Tampering Detection**.
4. Adjust the **Sensitivity** for video tampering detection.
5. Using the mouse, select the region on the preview screen for where you would like to enable video tampering detection on. Press the Clear button to clear region.
6. Select **Actions** to take if video tampering is detected. More than one action can be selected per channel. These actions include:
  - **Sound Audio Warning:** DVR will sound an audio warning if tampering is detected.
  - **Pop-up Image on Monitor:** DVR will show the corresponding channel that is associated with the tampered channel.

- **Notify Surveillance Center:** DVR will notify surveillance center when tampering is detected.
  - **Send Email:** DVR will send an email out to the designated recipients when tampering is detected.
  - **Trigger Alarm Output:** DVR will trigger alarm output when tampering is detected. Selecting this option will enable the Alarm Output list, where the output to trigger can be selected.
7. Select the Save button to save the privacy zones settings and select Exit to return to the previous menu. Selecting the Exit button without clicking Save will quit out of the menu without saving settings.

# Configuring Video Loss Detection

Video loss detection can be enabled on any of the channels on your DVR to detect the loss of video.

To configure video loss detection:

1. Enter the Video Loss Detection menu, shown in Figure 51 by going to Main Menu > Camera Setup > Video Loss Detection.



**Figure 52. Video Loss Detection Menu**

2. Select the camera to setup video loss detection in using the camera drop down menu on the upper left of the menu. If all cameras are to be configured with the same settings, select *All Cameras* from the list.
3. Click **Enable Video Loss Detection**.
4. Select **Actions** to take if video loss is detected. More than one action can be selected per channel. These actions include:
  - **Sound Audio Warning:** DVR will sound an audio warning if video loss is detected.
  - **Pop-up Image on Monitor:** DVR will show the corresponding channel that is associated with the video loss channel.

- **Notify Surveillance Center:** DVR will notify surveillance center when video loss is detected.
  - **Send Email:** DVR will send an email out to the designated recipients when video loss is detected.
  - **Trigger Alarm Output:** DVR will trigger alarm output when video loss is detected. Selecting this option will enable the Alarm Output list, where the output to trigger can be selected.
5. Select the Save button to save the privacy zones settings and select Exit to return to the previous menu. Selecting the Exit button without clicking Save will quit out of the menu without saving settings.

# Configuring OSD Settings

On Screen Display (OSD) settings can be configured in the OSD Configuration menu. The OSD is shown in each display in Live Feed and Playback mode.

To configure OSD settings:

1. Enter the OSD Configuration menu, shown in Figure 53 by going to Main Menu > Cameras Setup > OSD Configuration.



**Figure 53. OSD Configuration Menu**

2. Select the camera to setup OSD configuration in using the camera drop down menu on the upper left of the menu. If all cameras are to be configured with the same settings, select *All Cameras* from the list.
3. Configure OSD settings, including:
  - **Camera Name:** Name of selected camera.
  - **Display Camera Name:** Enable to display camera name in OSD.
  - **Display Date:** Enable to display date in OSD.
  - **Display Week:** Enable to display week in OSD.
  - **Date Format:** Format of date.
  - **Time Format:** Format of time.
  - **OSD Display:** Display style for OSD.
4. Using the mouse, click and drag OSD elements on preview screen to desired location.
5. Select the Save button to save the privacy zones settings and select Exit to return to the previous menu. Selecting the Exit button without clicking Save will quit out of the menu without saving settings.

# **CHAPTER 9**

## **Disk Management**

# Managing Disks

## Checking Disk Status

The status of all installed hard disk drives (HDD) can be checked under the Disk Management menu.

To check the status of installed disks:

1. Enter the Disk Management menu, shown in Figure 54 by going to Main Menu > System Configuration > Disk Management.



**Figure 54. Disk Management Menu**

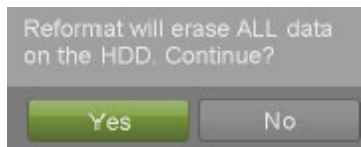
2. There are three different panels found in the Disk Management menu. They include:
  - **Disk Utilization:** Displays the maximum space available of all disks combined.
  - **Available Disks:** Displays a list of all installed disks and their respective space and status.
  - **Status:** Displays the available disk space of all disks combined.
3. Click the Done button to exit out of Disk Management.

# Formatting Disk

A newly installed hard disk drive (HDD) must be first formatted before it can be used with your DVR. Formatting the disk will erase all data on it.

To format a new disk:

1. Enter the Disk Management menu, shown in Figure 54 by going to Main Menu > System Configuration > Disk Management.
2. Select a disk to format. A disk that has not been formatted will show *Error Detected* as its status. If the disk is one that is newly installed, the status of the drive will show up as *Non-Active* and the Reformat button will change to the Add button.
3. Click the Reformat/Add button.
4. A confirmation message, similar to the one shown in Figure 55 will appear on the screen. Click the Yes button to continue formatting process.



**Figure 55. Disk Format Confirmation**

5. A format progress bar (Figure 56) will be shown on the menu. After the disk has been formatted, the status of the disk will change to *Active*.



**Figure 56. Disk Format Progress Bar**

6. Click the Done button to exit out of Disk Management.



# Enabling Disk Overwrite

Enabling disk overwrite will allow the DVR to overwrite the installed disks once the disks are full.

To enable disk overwrite:

1. Enter the Disk Management menu, shown in Figure 54 by going to Main Menu > System Configuration > Disk Management.
2. Check the Overwrite checkbox.
3. Click the Save button.
4. Click the Done button to exit out of Disk Management.

# Managing Files

## Searching for Recorded Files

Previously recorded files can be searched by criteria in the File Management menu.

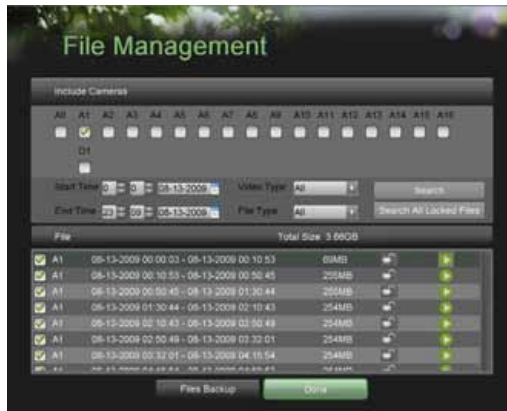
To search for recorded files:

1. Enter the File Management menu, shown in Figure 57 by going to Main Menu > System Configuration > File Management.



**Figure 57. File Management Menu**

2. Select the cameras that you would like to include in the search. Analog cameras are listed on the first row, preceded with the letter A. Digital cameras are listed on the second row, preceded with the letter D. If you would like include all cameras in the search, check the *All* box.
3. Select the **Start Time**.
4. Select the **End Time**.
5. Select the **Video Type**. Video type includes *Continuous* and *On Event* recordings.
6. Select the **File Type**. File type includes *Locked* and *Unlocked* files.
7. Click the Search button or if you would like to search for only locked files, the Search All Locked Files button.
8. A list of results with your search criteria will be shown at the bottom of the menu (Figure 58).



**Figure 58. File Search Results**

9. You may now play the selected file by clicking the Play button that is next to the file.
10. Click the Done button to exit out of the File Management menu.

## Locking and Unlocking Recorded Files

To lock and unlock recorded files:

1. Search for recorded files using the File Management menu (See *Searching for Recorded Files* on page 83).
2. Select the file you would like to lock/unlock.
3. Click the Lock icon for the selected file.
4. Click the Done button to exit out of the File Management menu.

**Note:** Locked files will never be overwritten until they are unlocked.

# **CHAPTER 10**

## **DVR Management**

# Managing System

## Upgrading the System Firmware

The system firmware for your DVR can be updated from a USB storage device.

To update the system firmware:

1. Enter the Firmware Upgrade menu, shown in Figure 59 by going to Main Menu > Maintenance > Firmware Upgrade.



**Figure 59. Firmware Upgrade Menu**

2. Connect the USB storage device to a USB port on the DVR.
3. Click the Refresh button. The contents of the USB storage device will be shown on the screen.
4. Select the firmware file. The firmware file is named *digicap.mav*.
5. Click the Upgrade button to upgrade the DVR. The DVR will automatically reboot after the upgrade is completed. If you do not wish to upgrade at this point, click the Cancel button.

# Restoring Default Settings

To restore factory default settings to your DVR:

1. Enter the Factory Default menu, shown in Figure 60 by going to Main Menu > Maintenance > Factory Default.



**Figure 60. Factory Default Menu**

2. Select the OK button to restore factory defaults or select the Cancel button to return to the previous menu.

**Note:** Network information such as IP address, subnet mask and gateway will not be restored.

## Exporting & Importing Configuration

Configuration information from your DVR can be exported to a USB storage device and imported into another DVR. This will allow you to efficiently setup the same configuration on numerous DVRs.

To export DVR configuration:

1. Enter the Export/Import Configuration menu, shown in Figure 61 by going to Main Menu > Maintenance > Export/Import Configuration.



**Figure 61. Import/Export Configuration Menu**

2. Connect the USB storage device to a USB port on the DVR.
3. Click the Refresh button. The contents of the USB storage device will be shown on the screen.
4. Click the New Folder button to create a new folder or the Delete button to delete a file/folder.
5. Select the location where you would like the configuration to be stored on the USB storage device.
6. Click Export to export a configuration file to USB storage device. The configuration file will be named *devCfg.bin*.
7. Click the Exit button to exit out of the Export/Import Configuration menu.

To import DVR configuration:

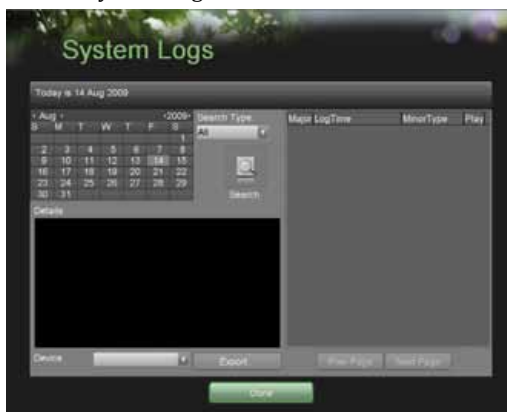
1. Enter the Export/Import Configuration menu, shown in Figure 61 by going to Main Menu > Maintenance > Export/Import Configuration.
2. Connect the USB storage device to a USB port on the DVR.
3. Click the Refresh button. The contents of the USB storage device will be shown on the screen.
4. Select the configuration file. The configuration file is named *devCfg.bin*.
5. Click the Import button.
6. Click the Exit button to exit out of the Export/Import Configuration menu.

# Viewing System Logs

Many events of your DVR are logged into the system logs.

To access the system logs and search for these events:

1. Enter the System Logs menu, shown in Figure 62 by going to Main Menu > Maintenance > System Logs.



**Figure 62. System Logs Menu**

2. Select the date from the **Calendar** to search for system logs in. The current system date is displayed in the upper left corner of the menu.
3. Select the log type using the **Search Type** drop down list. Four log types are available: **Alarm, Exception, Operation, Information**.
4. Click the Search button. The search results will be displayed in a list on the right side of the menu (Figure 63). If there are more than 2000 entries, click the Prev Page or Next Page button to display more entries.





**Figure 63. System Log Search Results**

5. Select an entry to view more detail information about the entry.
6. If applicable, you may also view the associated video to the selected log entry by clicking the Play button.
7. Log files can also be exported onto a USB storage device. To export a log file, connect a USB storage device to the DVR, select the log files to export and click the Export button.
8. Click the Done button to exit out of menu.

# Locking and Unlocking System Menus

System menus on your DVR can be locked to prevent unauthorized local access.

To lock and unlock system menus:

1. Enter the Lock Menus menu, shown in Figure 64 by going to Main Menu > Maintenance > Lock Menus.



**Figure 64. Lock Menus Menu**

2. Modify the Admin password to prevent access using the default Admin password. Input the **Current**, **New**, **Verify** Admin password and click the Set button.
3. Select the menus you would like to lock/unlock by selecting the Lock icon beside the menu's name in the list on the right. You may also choose to lock and unlock all settings or just recording settings by clicking on the corresponding buttons (Unlock All Settings, Lock All Settings, Lock All Recording Settings). Locking and unlocking a menu will require the input of the Admin password.
4. Once a system menu is locked, access to that menu will only be granted after the correct Admin password is entered.
5. Click the Done button to save settings and to return to the previous menu.



# Index

## A

Administration

Managing Cameras *70–72*

Managing Files *83–84*

Managing Storage *80–82*

Managing User Accounts *54–56*

Alarm Inputs *63–64*

## B

Backup *46–50*

## C

Cameras

IP Cameras *70–71*

## D

Date *18–19*

Digital Zoom *25*

Display

Configuring Displays *28–29*

OSD Settings *78*

## E

Exceptions *65–66*

Export Recordings See Backup

## F

Front Panel Controls *6–9*

Control Buttons *7–8*

Status Indicators *7*

## I

IP Cameras See Cameras

## L

Live Feed *22–30*

Live Feed Icons *22–23*

Locking DVR *17*

## M

Motion Detection *61–62*

Mouse *12*

## N

Network *52–53*

NTP Server *19*

## P

Playback *40–44*

Playback Interface *40*

Privacy Zones *73*

## R

Rebooting DVR *17*

Recording

Record Settings *32–34*

Scheduling a Recording *34–37*

Search for Recordings *41*

Remote Control *10–12*

Restoring System Defaults *87*

# S

Shutdown DVR *16–17*

Soft Keyboard *13*

Starting DVR *16*

System Logs *89–90*

# T

Time *18–19*

# U

Users

Adding a New User *54–55*

Deleting a User *55*

Editing a User *56*

# V

Video Loss Detection *76–77*

Video Tampering Detection *74–75*