



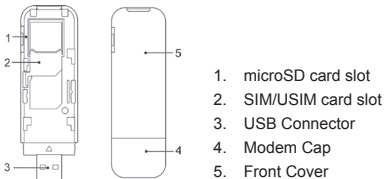
# **USB Modem Quick Start Guide**

## **MF730M**

## Getting to Know Your Device

Your device supports data and SMS services through the mobile phone network, enabling you to communicate anytime and anywhere.

The following figure is only for your reference. The actual product may be different.



**NOTE:** microSD logo  is a trademark of SD-3C, LLC

## Installation Guide

### Installing the (U)SIM Card and microSD Card

1. Press and push the front cover and remove it.

**NOTE:** Do not open the front cover rudely so as to avoid the damage of the front cover.

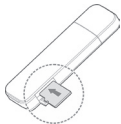
2. Insert the (U)SIM card into the (U)SIM card slot.

**IMPORTANT:** Your device does not support Micro/Nano or any other nonstandard SIM cards. To avoid device damage, please do not use them.

3. Insert the microSD card into the microSD card slot.

**NOTE:**

This modem only supports microSD card.

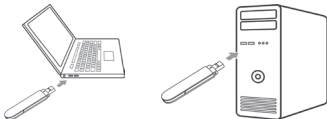


4. Slide the front cover gently back into place.



## Connecting the Modem to Your PC

1. Plug the USB connector into your computer's USB port and make sure that it is tightly inserted.



2. The OS automatically detects and recognizes your modem and starts the installation wizard.

## Installing Software

On different operating systems, the installation procedures may be different. Follow the system prompts during operation.

### For Windows OS

Follow the system prompts to complete the software installation.

NOTE:







If the system does not launch installation automatically, you can run the installation program in path of **My Computer > ZTEMODEM**.

### For Mac OS

The system will automatically display a CD-ROM icon on the desktop when you connect the modem to your computer correctly. Double click the installation software package in this CD-ROM, and follow the system prompts to complete the software installation.

## How to Use Your Modem

Various icons are presented to enable quick operation of the following functions:

	Connect	Connect to the Internet.
	Menu	Unfold or fold the main window of your software.
	Data	Show the connection information.
	SMS	Send or read your SMS.
	Contacts	Manage contacts information.
	Settings	Set the USB modem.

## Warning and Notice

### To the Owner

- Some electronic devices are susceptible to electromagnetic interference sent by modem if inadequately shielded, such as the electronic system of vehicles. Please consult the manufacturer of the device before using the modem if necessary.
- Operating the modem may interfere with medical devices like hearing aids and pacemakers. Please always keep them more than 20 centimeters away from such medical devices when they are turned on. Turn the modem off if necessary. Consult a physician or the manufacturer of the medical device before using the modem.
- Be aware of the usage limitation when using a modem at places such as oil warehouses or chemical factories, where there are explosive gases or explosive products being processed. Turn off your modem if required.
- The use of electronic transmitting devices is forbidden in aircrafts, at petrol stations and in hospitals. Please observe and obey all warning signs and switch off your modem in these conditions.

- Do not touch the inner antenna area if not necessary. Otherwise it will affect your modem's performance.
- Store the modem out of the reach of little children. The modem may cause injury if used as a toy.
- Do not touch the metallic parts of the modem so as to avoid a burn, when the modem is working.

## **Use Your USB Modem**

- Please use original accessories or accessories that are authorized. Using any unauthorized accessories may affect your modem's performance, and violate related national regulations about telecom terminals.
- Avoid using the modem near or inside metallic structures or establishments that can emit electromagnetic waves. Otherwise it may influence signal reception.
- The modem is not waterproof. Please keep it dry and store in a shady and cool place.
- Do not use the modem immediately after a sudden temperature change. In such case, it will produce dew inside and outside the modem, so don't use it until it becomes dry.
- Handle the modem carefully. Do not drop, bend or strike it. Otherwise the modem will be damaged.
- No dismantling by non-professionals and only qualified technicians can undertake repair work.



- Operating temperature range of -10 °C ~ +60 °C and humidity range of 5% ~ 95% are recommended.

## **Limited Warranty**

- This warranty does not apply to defects or errors in the Product caused by:
  - i. Reasonable abrasion.
  - ii. End User's failure to follow ZTE's installation, operation or maintenance instructions or procedures.
  - iii. End User's mishandling, misuse, negligence, or improper installation, disassembly, storage, servicing or operation of the Product.
  - iv. Modifications or repairs not made by ZTE or a ZTE-certified individual.
  - v. Power failures, surges, fire, flood, accidents, actions of third parties or other events outside ZTE's reasonable control.
  - vi. Usage of third-party products, or usage in conjunction with third-party products provided that such defects are due to the combined usage.
  - vii. Any other cause beyond the range of normal usage intended for the Product.

End User shall have no right to reject or return the Product, or receive a refund for the Product from ZTE under the above-mentioned situations.

- This warranty is End User's sole remedy and ZTE's sole liability for defective or nonconforming items, and is in lieu of all other warranties, expressed, implied or statutory, including but not limited to the implied warranties of merchantability and fitness for a particular purpose, unless otherwise required under the mandatory provisions of the law.

### **Limitation of Liability**

ZTE shall not be liable for any loss of profits or indirect, special, incidental or consequential damages resulting from or arising out of or in connection with using of this product, whether or not ZTE had been advised, knew or should have known of the possibility of such damages, including, but not limited to lost profits, interruption of business, cost of capital, cost of substitute facilities or product, or any downtime cost.

## How to Get Help

You can get Help by:

- Sending E-mail to **mobile@zte.com.cn**
- Visiting **http://www.ztedevice.com**
- Calling Service Hotline: **+86-755-26779999**

**C € 0700**

## **LEGAL INFORMATION**

Copyright © 2013 ZTE CORPORATION.

All rights reserved.

No part of this publication may be excerpted, reproduced, translated or utilized in any form or by any means, electronic or mechanical, including photocopying and microfilm, without the prior written permission of ZTE Corporation.

The manual is published by ZTE Corporation. We reserve the right to make modifications on print errors or update specifications without prior notice.

Version No. : R1.0

## **ZTE CORPORATION**

NO. 55, Hi-tech Road South, ShenZhen, P.R.China

Postcode: 518057

URL: <http://www.ztedevice.com>

Tel: +86-755-26779999

E-mail: [mobile@zte.com.cn](mailto:mobile@zte.com.cn)