

CDL-165PRO

USB Wireless Transmitter and Receiver to HDMI Display

Operation Manual



CDL-165PRO

• **Disclaimers**

The information in this manual has been carefully checked and is believed to be accurate. Cypress Technology assumes no responsibility for any infringements of patents or other rights of third parties which may result from its use.

Cypress Technology assumes no responsibility for any inaccuracies that may be contained in this document. Cypress also makes no commitment to update or to keep current the information contained in this document.

Cypress Technology reserves the right to make improvements to this document and/or product at any time and without notice.

• **Copyright Notice**

No part of this document may be reproduced, transmitted, transcribed, stored in a retrieval system, or any of its part translated into any language or computer file, in any form or by any means - electronic, mechanical, magnetic, optical, chemical, manual, or otherwise - without express written permission and consent from Cypress Technology.

© Copyright 2009 by Cypress Technology.

All Rights Reserved.

Version 1.0 October 2009

• **Trademark Acknowledgments**

All products or service names mentioned in this document may be trademarks of the companies with which they are associated.

• **Safety Precautions**

Please read all instructions before attempting to unpack or install or operate this equipment, and before connecting the power supply. Please keep the following in mind as you unpack and install this equipment:

- Always follow basic safety precautions to reduce the risk of fire, electrical shock and injury to persons.
- To prevent fire or shock hazard, do not expose the unit to rain, moisture or install this product near water.
- Never spill liquid of any kind on or into this product.
- Never push an object of any kind into this product through module openings or empty slots, as you may damage parts.
- Do not attach the power supply cabling to building surfaces.
- Do not allow anything to rest on the power cabling or allow it to be abused by persons walking on it.
- To protect the equipment from overheating, do not block the slots and openings in the module housing that provide ventilation.

• **Revision History**

Version No	Date	Summary of Change
V1	20091119	Preliminary Release
V2	20101022	Software Installation
RDV1	20101126	Cancel Firmware Update

Table of Contents

1. Introduction	1
2. Applications	1
3. Package Contents	1
4. System Requirements	1
5. Features	2
6. Specifications	2
7. Operation Controls and Functions	3
7.1 Transmitter	3
7.2 Receiver	3
7.2.1 Front Panel	3
7.2.2 Back Panel	4
8. Software Installation	5
9. Using Wireless USB Manager	8
9.1 Select Connection Rules item	8
9.2 System Association	8
9.3 Device Connection	10
10. Using DisplayLink Manager	10
10.1 Using DisplayLink Manager	10
10.2 Using More DisplayLink manager	14
11. Uninstall the Device Driver	15
12. Connection and Installation	16
13. Troubleshooting	17
14. Acronyms	18

1. Introduction

Today people are spending more of their time around technology, especially for entertainment purposes, and often encounter problems. People spend a lot of their watching Internet TV (HULU for instance is a popular source for internet TV and movies) However when the Internet TV viewer requires a larger viewing screen for a more immersive experience they then have to go through the hassle of connecting multiple cables, or working with wireless devices that fail to impress us on their quality. Well our "USB wireless transmitter and receiver to HDMI display" can allow you to view any PC information on a compatible TV with a wired like experience. An additional feature of this product is that it includes extra USB ports allowing it to perform KVM operations next to the TV, which is an added bonus for those of us who are multi-taskers.

2. Applications

- Wirelessly send Audio and Video from your PC to an HDTV
- Watch Internet TV on big screen, wirelessly

3. Package Contents

- USB Wireless Transmitter
- USB Wireless Receiver
- 5V DC power adaptor
- User Manual
- Driver CD

4. System Requirements

- System Hardware Requirements: 2.4 GHz single core CPU with at least 1GB RAM for optimal performance
- Operating Systems:
Windows XP Home or Professional 32 bits SP2
Windows Vista 32 bits
Windows 7
- USB Port Extension:
An available USB 2.0 port with USB to mini USB cable
- It is suggested to upgrade your systems graphics drivers, Display Link software and the mother boards chip set driver to their latest version

5. Features

- Worldwide Band Groups 1,3,4 and 6
- Supports HDMI & VGA outputs
- 16/32-bit Color for high-quality images
- HD resolution up to 1920 x 1080
- Has a broadcast range of 10 meters
- Speed up to 150MB/s
- HDMI and RGB display connectivity
- EDID selection with switch for VGA or HDMI output
- Secure and easy to use

6. Specifications

Input Port	1 x Mini USB
Output Ports	1 x HDMI, 1 x D-Sub 15pin, 3.5Φ phone jack
Extender Ports	2 x USB Hubs (A type)
Power Supply	5V DC/2.6A (US/EU standards, CE/FCC/UL certified)
ESD Protection	Human body model: $\pm 8\text{kV}$ (air-gap discharge) $\pm 4\text{kV}$ (contact discharge)
Dimensions (mm)	Transmitter: 81(W) x 25(D) x 11(H) Receiver: 90(W) x 120(D) x 25(H)
Weight(g)	Transmitter: 22 Receiver: 120
Chassis Material	Transmitter: Plastic Receiver: Plastic
Silkscreen Color	Transmitter: Black Receiver: Metal Black
Power Consumption	Receiver: 8W
Operating Temperature	0°C ~ 40°C / 32°F ~ 104°F
Storage Temperature	-20°C ~ 60°C / -4°F ~ 140°F
Relative Humidity	20~90% RH (non-condensing)

7. Operation Controls and Functions

The following sections describe the hardware components of the unit and include a step by step installation guide and other suggested settings.

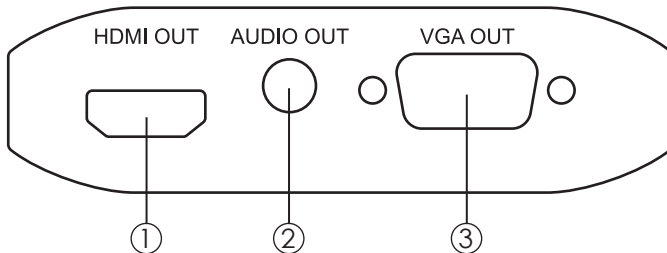
7.1 Transmitter



Connect the wireless USB dongle to a PC or Laptop to deliver fast and reliable media through the use of Ultra Wide Band (UWB) technology. The LED will illuminate when PC or Laptop has successfully detect the device and when the LED is blinking it means data is been transmit to receiver.

7.2 Receiver

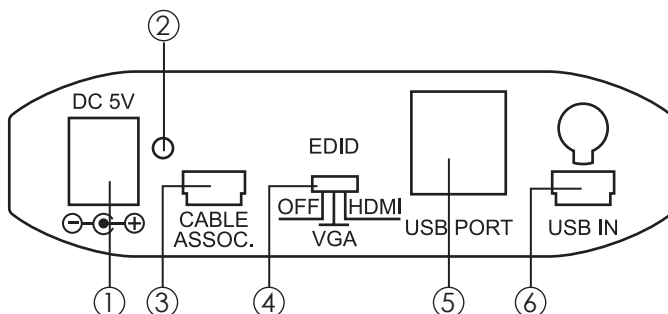
7.2.1 Front Panel



- ① HDMI OUT: Connect the HDMI output to the HDMI display.
- ② AUDIO OUT: Connect the audio output to the speaker or AVR.
- ③ VGA OUT: Connect the VGA output to the VGA monitor.

Note: HDMI and VGA can output at the same time.

7.2.2 Back Panel



- ① **Power:** This slot is where the user plugs in the 5V DC power supply of this unit before connecting the adaptor to an AC wall outlet.
- ② **Link LED:** When the LED illuminate it shows that the device has successfully detected the transmitter and when it blink it means the device is receiving transmitter's signals.
- ③ **CABLE ASSOC.:** This slot is where the user connects a USB cable to the PC or Laptop USB port for ID association when first using the system and later on when establishing a connection with the Transmitter.
- ④ **EDID control switch:** The default setting for this switch is HDMI, leave the switch here as long as the connected display is compatible. When the EDID control is switched from HDMI to VGA the unit will detect the sources EDID and record it. Turn off in order to use the built in EDID.
- ⑤ **USB Port:** These ports allow the receiver to act like a USB hub, allowing you to connect an External Hard Drive, Keyboard or Mouse.

Note:

- These two USB ports cannot be connected to a USB extension hub, doing so will trigger the system to detect the external Hub and will cause a system failure.
 - Before removing the USB device, the user must follow the USB devices hardware removal procedure. Failure to do so will cause the system to crash.
- ⑥ **Mini USB IN:** This port supports This port support mirror or video extension (via USB cable) to your HDMI display, including both video and audio output signals.

8. Software Installation

The following sections list the procedures to follow when installing the USB to HDMI and USB device drivers. Insert the provided CD into your CD-ROM drive, then begin the Wireless USB Install Disc and follow the below steps to install the driver.

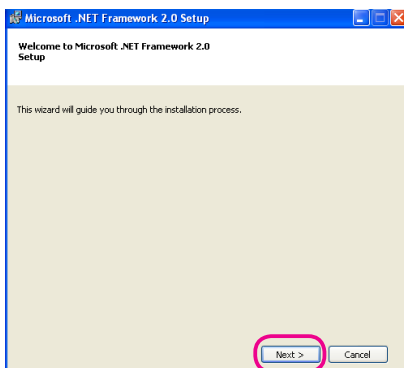


Step 1: Click Install drivers and application.

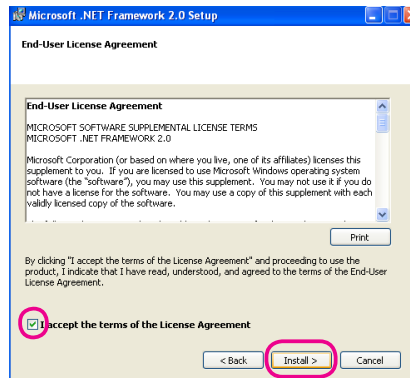
Step 2: Click "Continue" to start the setup.



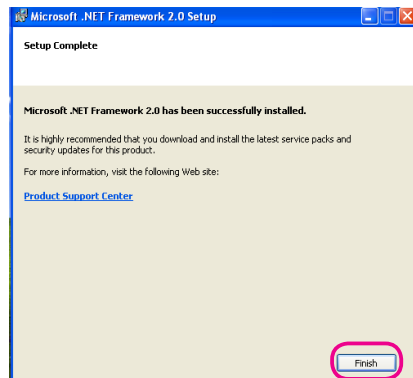
Step 3: Click "Next" to continue the set up.



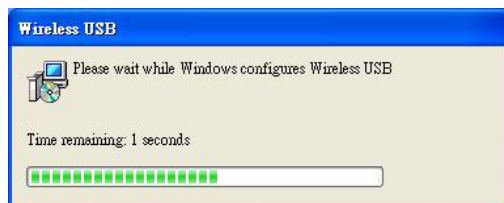
Step 4: Click "I accept the terms of the License Agreement" and go to the Next page.



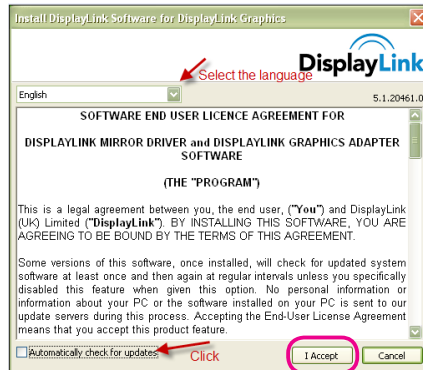
Step 5: Click "Finish" to complete the installation.



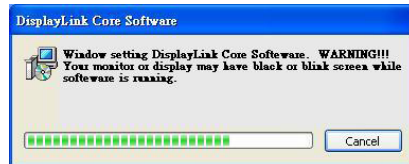
The installation process may take a little time, please be patient while the system is running.



Step 6: Click "I accept the terms of the License Agreement" and go to the Next page.



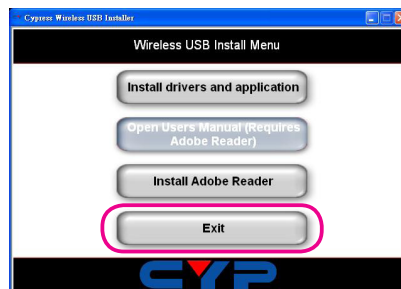
The installation process may take a little time, please be patient while the system is running.



Step 7: When all three software are being installed successfully with three tick show on the window, Click "Close" to finish installing.



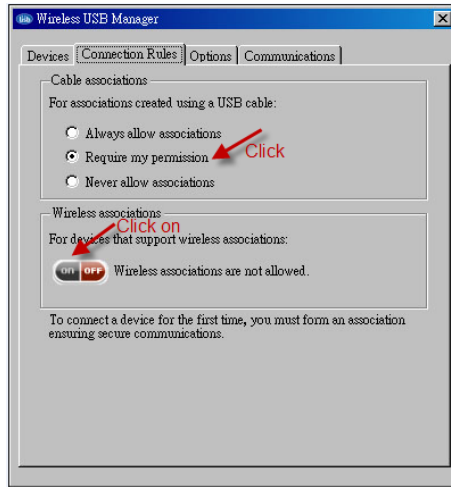
Step 8: Click "exit" to exit the installer dialogue.



9. Using Wireless USB Manager

9.1 Select Connection Rules item

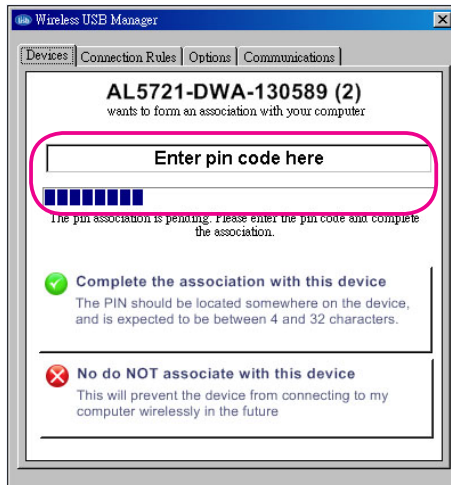
To connect a device for the first time the user must form an association



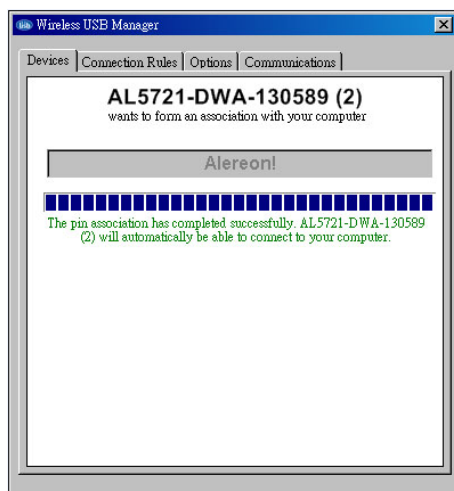
9.2 System Association

Enter pin code to associate with your computer.

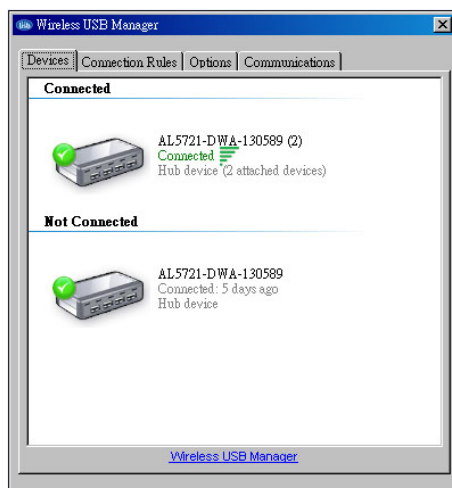
Pin Code is located on FCC/CE sticker, placed on both the device's bottom and outside package.



Association is successful



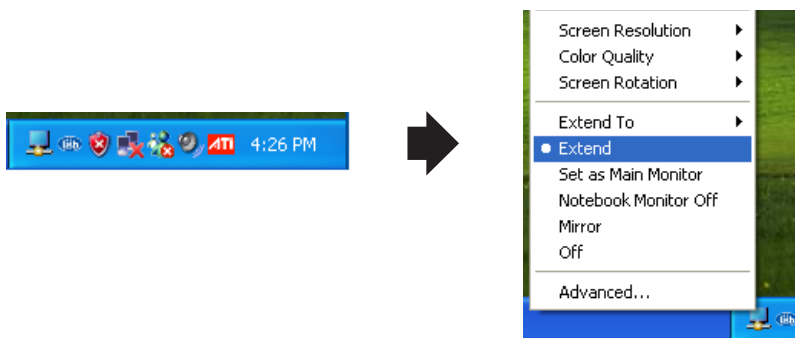
9.3 Device Connection



10. Using DisplayLink Manager

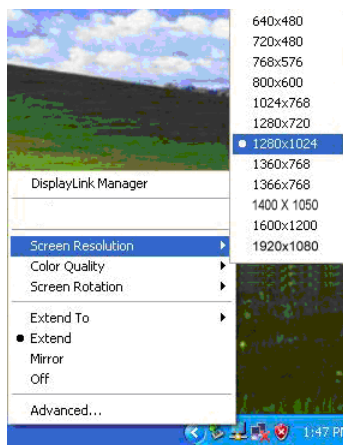
10.1 Using DisplayLink Manager

After the driver is installed, a utility (DisplayLink Manager) will automatically appear in the system tray. The utility allows you to quickly change the settings and resolution for DisplayLink Manager. Right click on the icon will bring out the context menu.

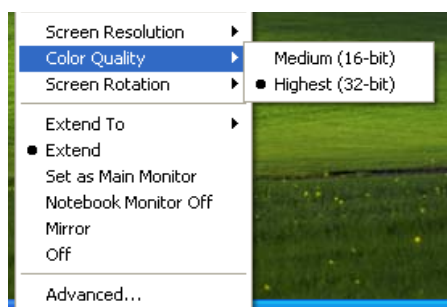


- **Screen Resolution:** Select the screen resolution (available only in extended mode).

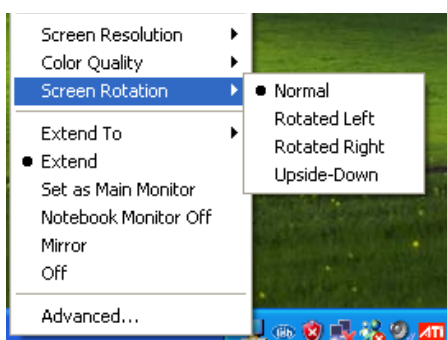
NOTE: When the display has a built in EDID the screen will show the displays resolution, if no EDID is present the screen has the following resolution (see below image)



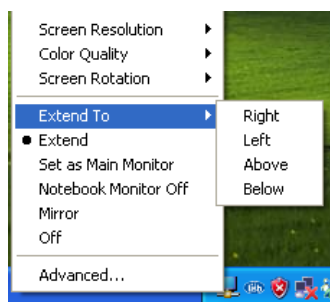
- **Color Quality:** Select the screen color quality (available only in extended mode).



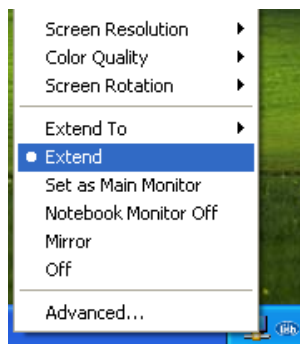
- **Screen Rotation:** Rotate the screen on the additional monitor by 90, 180 or 270 degrees.



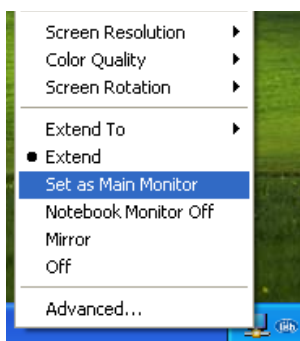
- **Extend to:** Reposition the extended screen to the top, bottom, left or right of the primary display.



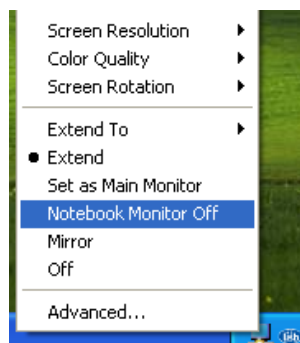
- **Extend:** Set the DisplayLink Manager to Extended mode.



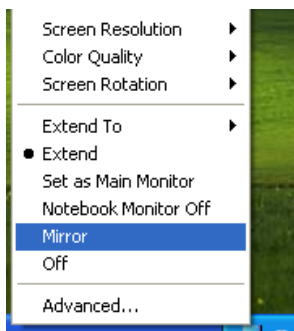
- **Set as Main Monitor:** Set the monitor to be the main monitor.



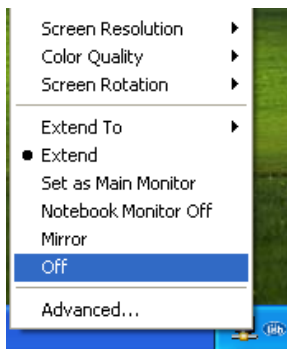
- **Notebook Monitor off:** Set the PC/notebook's monitor off.



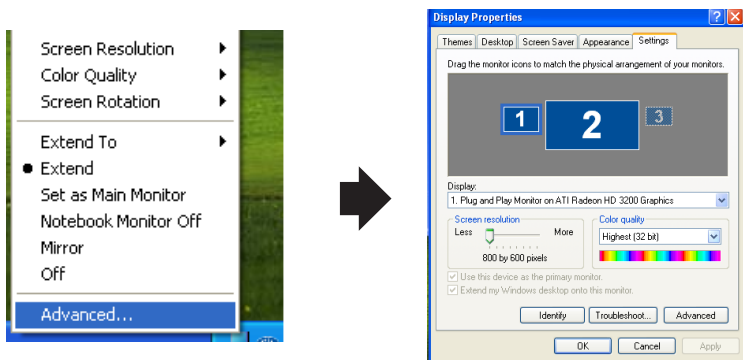
- **Mirror:** Set the DisplayLink Manager to Mirror mode. You can see the same desktop image on the additional monitor.



- **Off:** Disable the DisplayLink Manager on the system.



- **Advanced:** Opening the **Display Properties** will allow you to adjust the resolution, color quality, position and refresh rate.



10.2 Using More DisplayLink manager

You don't have to install a new driver as long as you have completed the above installation process in advance. It will automatically define the ID of the new Display Link Manager and will list everything in the Display properties or the display manager menu.



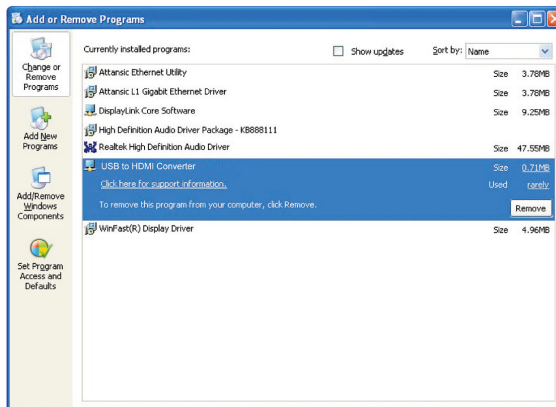
NOTE: When connecting more DisplayLink Manager to a computer, a system with higher CPU performance is recommended.

11. Uninstall the Device Driver

Follow the steps below to uninstall the Multi View driver.

Step 1: Open the Control Panel: **Start** → **Control Panel** → **Add or Remove Programs**.

Step 2: Select **USB-VGA-HDMI DisplayLink Adapter** and click **Remove**.



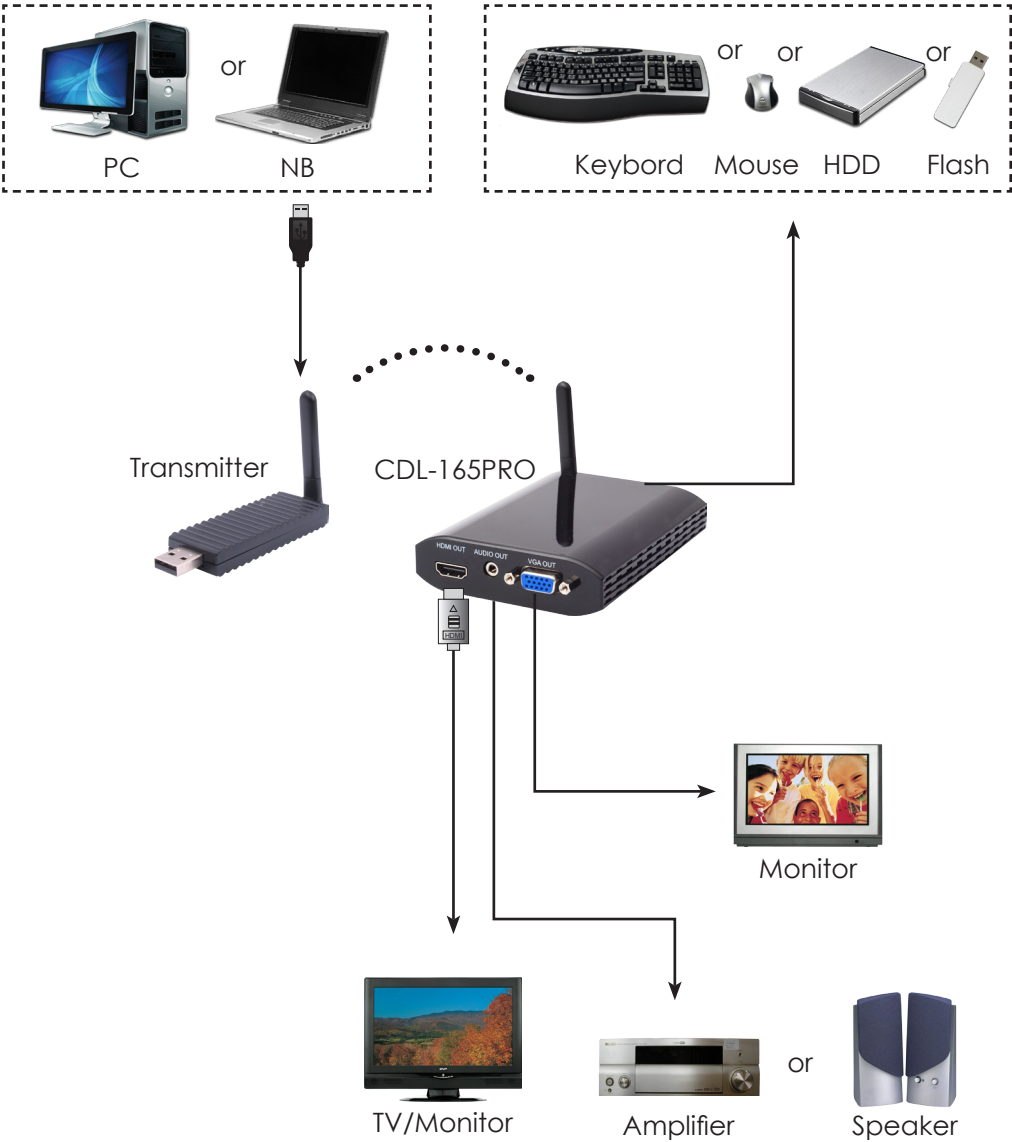
Step 3: Click Yes to confirm the removal.



Step 4: Click Yes to restart your computer.



12. Connection and Installation



13. Troubleshooting

Situation	Check Point
The device driver has been installed, but the DisplayLink Manager is not working	<ol style="list-style-type: none">1. Make sure you restart your computer after the driver installation.2. Check all the connectors are plugged in correctly.3. Make sure the USB port that you are using is USB 2.0.4. Check the additional monitor is connected correctly and the power is on.5. Make sure the operating system, the DisplayLink Manager is compatible with Windows, XP and Vista (32bit).6. Try a different USB 2.0 or computer.7. Check USB cable's specification.
DVD player is not working when moved to the extended display	<ol style="list-style-type: none">1. Try running the program on another display before playing the DVD.
The mouse does not move passed the right side during extended desk top mode.	<ol style="list-style-type: none">1. Check the display settings and make sure that your display number 2 is on the right side of display number 1.



Acronyms

Acronym	Complete Term
EDID	Extended Display Identification Data
HDMI	High-Definition Multimedia Interface
VGA	Video Graphics Array



CYPRESS TECHNOLOGY CO., LTD.
Home page: <http://www.cypress.com.tw>

20100114 MPM-CDL165PRO