

AZZA

ONE VISION, ONE MISSION

USER MANUAL



TOLEDO 301

WWW.AZZATEK.COM

TOLEDO 301

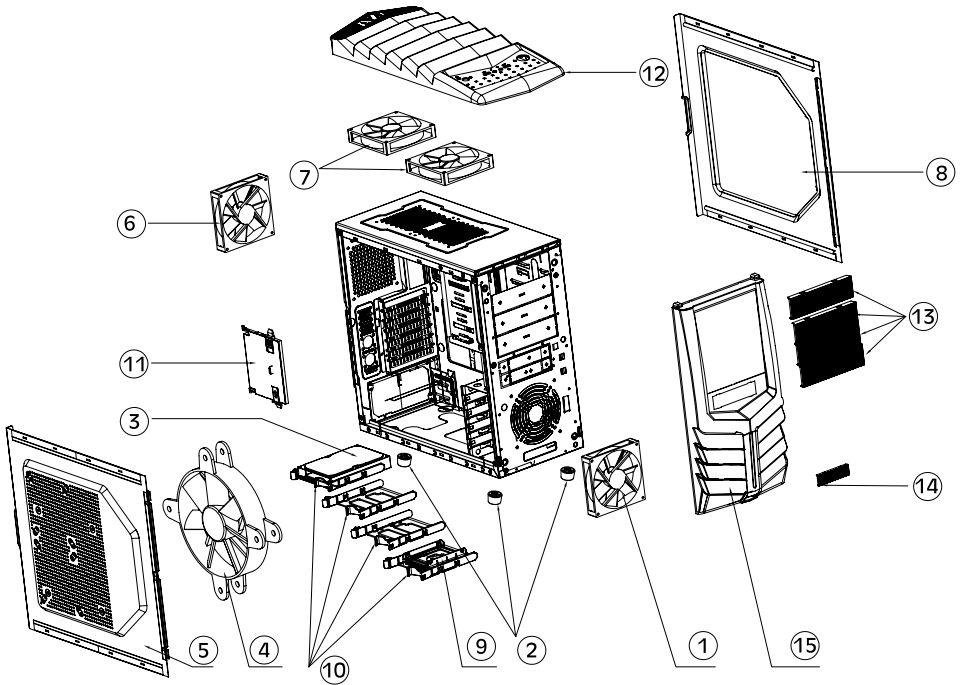
AZZA(USA)Technology Ltd.

670 Endeavor Circle
Brea, CA 92821
U S A
Phone:714-990-5625
Fax:714-990-5912
www.azzatek.com

Model Name	Toledo
Model Number	CSAZ-301
Type	ATX Mid-Tower
Color	Black (exterior)/Black (interior)
Material	SECC Steel
Side Panel Window	No
With Power Supply	No
Motherboard Compatibility	ATX, Full ATX, Micro ATX
External 5.25" Drive Bays	4
External 3.5" Drive Bays	1
Internal 2.5" Drive Bays	3+2 x2.5" SSD, HDD Drive Bays
Internal 3.5" Drive Bays	4
Expansion	7
Front Ports	2xUSB 2.0, Audio, Mic
Cooling System	1x250mm Blue LED fan on side 1x120mm Blue LED fan in front 1x120mm Black fan in rear
Dimensions(HxWxD)	19.5" x 9.1" x 20.1" (495mm x 231mm x 510mm)
Feature	
Ultimate Cooling System	1x250mm Blue LED fan on the side intake the cool air for VGA card and CPU
Total support 6 Fans	1x120mm Blue LED fan in front intake the cool air for HDD 1x 120mm black fan in rear to exhaust hot air 2x120mm fan on top(option) to exhaust hot air
Support Water Cooling	support water cooling radiator up to size 240mm
Support Longest VGA card	support up to 340mm (ATI 5970) VGA card
Bottom Mount Power Supply	Power Supply located on the bottom, two ways to install power supply; providing more efficient airflow
Cable Management	Cable is hidden behind the pre-drilled motherboard tray;better cable management and better air flow
Maximum Compatibility	Compatible with ATX, Micro ATX and all kinds of Nvidia, ATI long graphic card up to 340mm, and all kinds of water cooling system; support radiator up to size 240mm
Easy installation of CPU Cooler	A pre-cut hole for an easy installation of CPU cooler,eliminating the need to remove the motherboard
Screwless design for HDD	4x Easy Screwless HDD trays and 90 degree turn for HD cage for easy install HD, support 2 HD holder for 2.5" SSD and HD



Part List



1	Front Panel : 1X120mm LED Fan	9	2.5"SSD Holder
2	Foot Support	10	3.5"HDD Holder
3	3.5HDD (not included)	11	5.25" Device Lock
4	Left Panel : 1X250mm LED Fan	12	Top Panel
5	Left Side Panel	13	5.25" Drive bay (Mesh Cover)
6	Rear : 1X120mm Fan	14	3.5" Drive bay (Mesh Cover)
7	Top : 2X120mm Fans (not included)	15	Front Panel
8	Right Side Panel		



-Rear Fan(Exhaust)
120X120X25mm Fan



-Fan Hole For Water
Cooler Radiator










-Side Fan(Intake)
250x250x30mm
Blue LED Fan



-Front Fan(Intake)
120X120X25mm
Blue LED Fan

Assembly kit

 <p>9PCS screw for PCB</p>	 <p>2PCS screw for dust shield</p>
 <p>4PCS Screw for 2.5" SSD</p>	 <p>1PCS speaker</p>
 <p>2PCS screw for plastic boss</p>	 <p>4PCS releasible Cable Tie</p>
 <p>4PCS power supply screws</p>	

Diagram



1_ Open The Side Panel



- 1.Remove the locking screws on left hand side of the case towards the back of the case.
- 2.Slide out the side panel.

2_ Remove The Front Panel and Top Panel



- 1.Hold the front panel by placing one hand on top of the case and one hand at the bottom.
- 2.Pull the bottom part front panel towards you.



- 1.Remove the screws which locked the top panel from inside the case with a screwdriver.
- 2.Hold the top panel with both hands and push toward you.
- 3.Then take off the top panel.

3_ Install Power Supply



- 1.Place the power supply towards the bottom of the case.
- 2.Tighten the power supply with screw.
- 3.This case is designed in a way that the power supply unit can be installed either facing up or down.

4_5.25" Device and 3.5" Device Installation



- 1.Unlock 5.25" device lock by pulling the nods with both of your hands.
Push the nods then the lock door will be released.
- 2.Take off the front panel with the arrows shown on the diagram.



- 3.Push the 5.25" or the 3.5" mesh cover front from the inside out.
- 4.Put back the front panel and place the 5.25" or the 3.5" device into the respective drive slot.
- 5.Slide the 5.25" device into the respective bay and make sure the screw holes on the device matches with the marking on the 5.25" device cage.



- 6.Closed the 5.25" device door and then push the lock again with both hands.
- 7.For 3.5" device, you need to secured it with screws.

5_3.5" HD Device Installation



- 1.Take the 3.5" HD holder out from the HD cage
- 2.Place your 3.5" HD inside the HD holder.
- 3.Push the 3.5" HD holder back to HD cage

6_2.5" SSD & HD Device Installation

Option 1:



- 1.Put the 2.5" device on the 3.5" HD holder.
- 2.Secured the 2.5" device with screw.
- 3.Push the 3.5" HD holder back to HD cage.

Option 2:

* This holder can put two 2.5" SDD devices.



- 1.Take off the 2.5" device holder from 3.5" device.
- 2.Put the 2.5" device in this holder. Total you can put 2 2.5" device in this holder, one on bottom, one on top.
- 3.Secured the 2.5" device with screws, then put this 2.5" device holder back to 3.5" HD holder and secured it with screws.
- 4.Push the 3.5" HD holder back to HD cage.

7_Top Fans Installation

Option 1:

Take off the top panel and placed the fans on top of the case and screw the fans from the inside the case.



Option 2:

Place the fans beneath the top panel and screw the fans from outside the case.



8_Close The Side Panel



Closed the side panel along with those screws that we've remove from.



- Please refer to your motherboard user manual on the sections of "USB connector" and "Audio Connector."
- Please verify the pin definition before connecting the connectors to the motherboard.

USB Connector					
		Pin Definition	Wire Color		
USB1		GROUND	BLACK	USB ① Ground	
		+ D	GREEN	USB ① DATA +	
		-D	WHITE	USB ① DATA-	
		VCC	RED	USB Power① +5V	
USB2		GROUND	BLACK	USB ② Ground	
		+ D	GREEN	USB ② DATA +	
		-D	WHITE	USB ② DATA-	
		VCC	RED	USB Power② +5V	

AUDIO Connector(HD Audio)					
		Pin Definition			
PORT1 L	RED		BLACK	AUD GND	
PORT1 R	GREEN		BLACK	BLACK PRESENCE#	
PORT2 R	YELLOW		BROWN	SENSE1 RETURN	
SENSE SEND	PURPLE		KEY		
PORT2 L	BLUE		ORANGE	SENSE2 RETURN	

AUDIO Connector AC'97					
		Pin Definition			
Front Right Channel Audio Signal	MIC IN	RED	BLACK	GROUND	Front Audio Ground
	MIC POWER	GREEN	NC		
Front Left Channel Audio Signal	R-OUT	YELLOW	YELLOW	R-RET	Rear Right Channel Audio Signal
Front Microphone input Signal		NC	KEY		
Front Microphone Power	L-OUT	BLUE	BLUE	L-RET	Rear Left Channel Audio Signal

Remark:

- 1.USB and Audio connectors have foolproof design · can only be inserted in one direction.
- 2.LED connectors have electrically positive and negative poles.