

Mills/Mixers

Order by phone ▶ 01342 826836 Order on-line ▶ www.ecomcat.co.uk
 Order by fax ▶ 01342 826771 Website ▶ www.jencons.co.uk

452-000



IKA, Models A11 basic, M20 and MF10 basic Mills

IKA, Model A11 basic, Analytical Mill

Hard, brittle or fibrous samples can be ground to fine powder in a few seconds with the IKA A11 basic analysis mill. The A11 basic analysis mill is delivered with a standard airtight grinding container of 80 ml effective volume and a high-grade steel beater (A11.1). A grinding chamber with an effective volume of 250ml can be ordered as an option.

IKA, Model M20, Universal Mill

This mill is suitable for grinding hard and brittle substances. The maximum grain size is 6 to 7mm. Supplied with stainless steel cutter M21. Has a double walled, coolable chamber, which can be removed. This facilitates cleaning. A second grinding chamber and grinding tool can be ordered and used alternately.

IKA, Model MF10 basic, Micro-fine Mill

The MF10 basic is a continuously operating universal mill. Two different grinding heads can be attached to the drive and easily changed. The grinding head must be ordered separately:

There are five interchangeable sieves for insertion into the grinding chamber to ensure maximum particle size filtration.

Specifications

| Model | A11 basic | M20 | MF10 basic |
|------------------------------|----------------|-----------------|-----------------|
| Nominal speed, rpm | 28000 | 20000 | 3000-6500 |
| Required intermission, mins | 10 | — | — |
| Safety device | Beaker contact | Lid contact | Door contact |
| Overload protection | Electronic | Current limiter | Current limiter |
| Grinding chamber volume, ml | 80* | 250 | — |
| Permissible ambient temp. °C | 5 to 40 | 5 to 40 | 5 to 40 |
| Permissible humidity, % | 80 | 80 | 80 |
| Dimensions (wxhxh), mm | 85x85x240 | 170x170x350 | 320x300x380 |
| Weight, kg | 1.5 | 6.6 | 11 |
| Cat. No. | 452-000 | 452-001 | 452-043 |
| Price | POA | POA | POA |

* 250ml with optional chamber

Accessories

| Cat. No. | Description | For model | Price |
|----------------------|--|-----------|-------|
| For A11 mill | | | |
| 452-046 | A11.2 Cutting blade | A11 | POA |
| 452-047 | A11.3 Beater | A11 | POA |
| 452-048 | A11.4 Grinding container, 250ml volume | A11 | POA |
| For M20 mill | | | |
| 452-005 | M22 Hard metal cutter | M20 | POA |
| 452-006 | M23 St/steel star-shaped cutter | M20 | POA |
| 452-049 | M20.1 Grinding chamber | M20 | POA |
| For MF10 mill | | | |
| 452-044 | MF10.1 Cutting grinding head for soft, fibrous material | MF10 | POA |
| 452-045 | MF10.2 Impact grinding head for brittle and hard materials | MF10 | POA |

Note: Other accessories including interchangeable sieves are available. Please enquire for details on 01342 826836.

Spiramix Mixers

A purpose-built blood mixer in 5 and 10 roller versions, giving a highly-efficient rocking and rolling action for the complete mixing of all liquid solid suspensions with minimum aeration. All the rollers are positively driven and will accommodate all types of blood tubes. Both models have 320mm rollers and operate at 50rpm.

Specifications

| Model | Spiramix, 5 roller version | Spiramix, 10 roller version |
|-------------------------|----------------------------|-----------------------------|
| Number of rollers | 5 | 10 |
| Shipping weight, kg | 5.4 | 8.8 |
| Electrical requirements | 230-250V AC, 50HZ | 230-250V AC, 50Hz |
| Dimensions (wxhxl), mm | 220x100x460 | 410x100x460 |
| Weight, kg | 4.8 | 7.8 |
| Cat. No. | 454-028 | 454-030 |
| Price | POA | POA |

Variable speed models with timer are also available. Please contact our Technical Office on 01342 826836 for details.

452-001



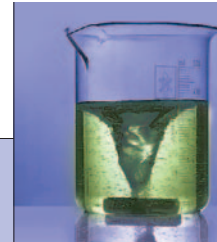
452-043



454-028



454-030



Rollers/Rotators

Order by phone > 01342 826836 Order on-line > www.ecomcat.co.uk
 Order by fax > 01342 826771 Website > www.jencons.co.uk

Stuart, SRT1 and SRT2 Roller Mixers

The roller mixers provide a gentle, but highly effective, rocking and rolling action. The rollers rotate at 33rpm and rise and fall 16mm. Recommended for mixing blood samples, viscous substances and liquid-solid suspensions where minimum aeration is required. Both roller mixers are robustly constructed and designed for easy cleaning, having plastic rollers and a stainless steel drip tray to collect accidental spillages. Most sizes of tubes, Bijoux, Universals and bottles can be accommodated. For large capacity bottles (up to 120mm diameter), one or more of the rollers is easily removed to give improved grip. Similarly, it is possible to quickly convert the units to provide a 'roll only' action and function as a simple bottle roller.

- Rocking and rolling action for complete mixing
- Ideal for mixing blood samples
- Removable rollers to accommodate large bottles
- Designed for continuous operation between 4°C and 60°C
- Choice of two sizes, 5 rollers or 10 rollers

Specifications

| Model | SRT1 | SRT2 |
|----------------------------|----------------|----------------|
| No. of rollers | 5 | 10 |
| Roller diameter/length, mm | 30/340 | 30/340 |
| Speed per minute, rpm | 33 | 33 |
| Orbit dia./amplitude, mm | 16 | 16 |
| Dimensions (wxdxh), mm | 200x500x90 | 380x500x90 |
| Weight, kg | 5 | 7 |
| Cat. No. | 364-061 | 364-069 |
| Price | POA | POA |

Stuart, Rotator, Drive Unit STR4

The STR4 rotator drive unit is used in conjunction with a wide range of drums designed to take different sizes and types of vessels. The five drums are designed to give different mixing actions and are listed below.

- Highly versatile – accepts a choice of tubes of 5 drums
- Built in timer
- Variable speed control 6 to 60rpm

Speed of rotation is variable from 6 to 60rpm for a range of mixing applications. For added convenience a built in analogue timer can be set from 10 to 60 minutes. Alternatively the unit can be set for continuous operation.

Specification

| | | | |
|---------------------|-----------------|------------------------|-------------|
| Rotation speed, rpm | 6 to 60 | Dimensions (wxdxh), mm | 650x250x250 |
| Electrical supply | 230V, 50Hz, 50W | Weight, kg | 6.4 |

| Cat. No. | Description | Price |
|----------|--|-------|
| 640-050 | STR4 Rotator drive unit (does not include vessel holding drum) | POA |

Drum, Test Tube Holder STR4/1

Designed to rotate test tubes in a 'end-over-end' movement. Up to 4 plates can be mounted on the drum.

Drum, Two Platforms STR4/2

This drum accepts 2x500ml conical flasks or reagent bottles for 'end-over-end' mixing.

Drum, Figure 8 STR4/3

Designed to hold vessel at 45° angle to give 'figure of eight' mixing. Accepts almost any container.

Drum, Bottle Holder STR4/4

Drum consists of a 4 segment Perspex cradle. Holds bottles and containers up to 120mm diameter.

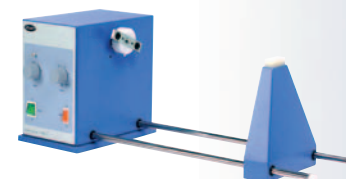
Drum, Microcentrifuge Tube STR4/5

Designed for mixing 1.5ml microcentrifuge tubes

| Cat. No. | Description | Price |
|----------|---|-------|
| 640-023 | STR4/1 Drum to hold test tube clip plates | POA |
| 640-051 | STR1/1 Clip plates for 12x12mm tubes (per pair) | POA |
| 640-052 | STR1/2 Clip plates for 10x16mm tubes (per pair) | POA |
| 640-053 | STR1/3 Clip plates for 8x19mm tubes (per pair) | POA |
| 640-054 | STR1/4 Clip plates for 7x24mm tubes (per pair) | POA |
| 640-020 | STR4/2 Drum with 2 platforms to hold 2x500ml conical flasks or bottles | POA |
| 640-021 | STR4/3 Drum with figure 8 mixing action | POA |
| 640-022 | STR4/4 Drum with 4 segment cradles holding up to 4 bottles (up to 120mm dia.) | POA |
| 640-001 | STR4/5 Drum with 4 segment cradles and four tube racks, each accommodating 60x1.5ml tubes | POA |

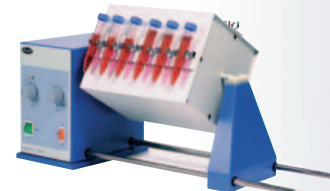


364-069



640-050

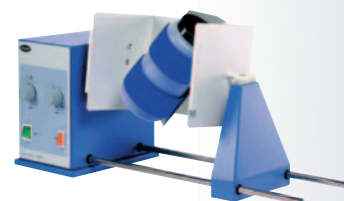
640-050 with 640-023 (test tube clip plates sold separately)



640-050 with 640-020



640-050 with 640-021



640-050 with 640-022



640-050 with 640-001





Mixers

Order by phone > 01342 826836 Order on-line > www.ecomcat.co.uk
 Order by fax > 01342 826771 Website > www.jencons.co.uk

Rotators

New

454-218 shown with 454-219



Heidolph, Reax Mixers

The Reax mixers come in four different models, for 2 bottles, 4 bottles, 8 bottles and 12 bottles. They all provide one dimensional swirling action and feature a maintenance-free, balanced drive system and are suitable for continuous use. The sealed drive is isolated from spills (IP21) making them ideal for use in cold rooms. All models have a 3 year warranty.

The Reax 2 has a speed range of 20 to 100rpm (continuously adjustable); it features an analogue dial for speed control and is suitable for haematology, medical diagnostics, materials testing and biochemistry. It is supplied with a basic shaking table comprising a rubber pad with raised edge. A universal adaptor and test tube adaptor are available as accessories.

Models Reax 20/4, 20/8 and 20/12 will accommodate 2 litre bottles as standard (attachment supplied) and 0.5 or 1 litre bottles with accessory attachments. Model Reax 20/4 can mix 4 bottles, the Reax 20/8 8 bottles and model Reax 20/12 12 bottles. Other vessels of 270mm height and max. diameter of 136 mm are also compatible. They all feature an analogue dial for speed control.

Specifications

| Model | Reax 2 | Reax 20/4 |
|------------------------|-----------------|-----------------|
| Type of Motion | Overhead mixing | Overhead mixing |
| Rotation speed, rpm | 20–100 | 1–16* |
| RPM display | Scale | Scale |
| Dimensions (lxwxh), mm | 510x235x180 | 490x520x465 |
| Weight, kg | 5.2 | 23 |

Specifications

| Model | Reax 20/8 | Reax 20/12 |
|------------------------|-----------------|-----------------|
| Type of Motion | Overhead mixing | Overhead mixing |
| Rotation speed, rpm | 1–16* | 1–16* |
| RPM display | Scale | Scale |
| Dimensions (lxwxh), mm | 770x520x465 | 1050x520x465 |
| Weight, kg | 28 | 33 |

* Models with speed ranges of 0.5–8rpm and 2–32rpm are also available. Please contact our Technical Office on 01342 826836 for details.

New

454-222



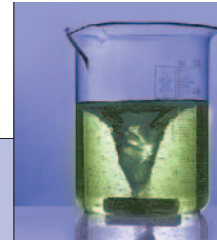
| Cat. No. | Description | Price |
|----------|---------------------------|-------|
| 454-218 | Reax 2 overhead mixer | POA |
| 454-221 | Reax 20/4 overhead mixer | POA |
| 454-222 | Reax 20/8 overhead mixer | POA |
| 454-223 | Reax 20/12 overhead mixer | POA |

Accessories for Reax 2

| Cat. No. | Description | Price |
|----------|---|-------|
| 454-219 | Universal adaptor for various vessels | POA |
| 454-220 | Test tube attachment for 20 test tubes (10-18mm diameter) | POA |

Accessories for Reax 20/4, 20/8, 20/12

| Cat. No. | Description | Price |
|----------|--|-------|
| 454-224 | Attachment for the use of four 1 litre bottles | POA |
| 454-225 | Attachment for the use of four 0.5 litre bottles | POA |



Blenders

Order by phone > 01342 826836 Order on-line > www.ecomcat.co.uk
 Order by fax > 01342 826771 Website > www.jencons.co.uk

BagMixer® Laboratory Sample Blenders

The BagMixer® 400 line is a complete system to cover the full range of laboratory blending applications. The range comprises three models of BagMixer® each with its own range of highly competitive and innovative mixing bags. The MiniMix® 100 has a 5–100ml capacity, BagMixer® 400 has a 100–400ml capacity and the JumboMix® 3500 has a 400–3500ml capacity.

- Stainless steel body and blending chamber
- Easy to clean
- Adjustable paddles
- Silent operation
- Compatible with other manufacturers' bags
- Three year warranty
- New for old – special reduced prices on this range when disposing of your old Stomacher
- Drip tray supplied with all models with transparent door

Specifications

| Model | MiniMix® 100 | BagMixer® 400 | JumboMix® 3500 |
|--------------------------------------|--------------|---------------|----------------|
| Capacity, ml | 5–100 | 100–400 | 400–3500 |
| Stroke frequency, strokes per second | 6–9 | 8 | 3–6 |
| Timer, seconds | 10–360 or ∞ | 30–210 or ∞ | 30–210 or ∞ |
| Dimensions (lxwxh), mm | 350x200x180 | 400x270x260 | 410x500x380 |

| Cat. No. | Description | Price |
|----------|---|-------|
| 454-080 | MiniMix® 100 Sample Blender with stainless steel front door | POA |
| 454-081 | MiniMix® 100 Sample Blender with transparent front door | POA |
| 454-084 | BagMixer® 400 Sample Blender with stainless steel front door | POA |
| 454-085 | BagMixer® 400 Sample Blender with transparent front door* | POA |
| 454-082 | JumboMix® 3500 Sample Blender with stainless steel front door | POA |
| 454-083 | JumboMix® 3500 Sample Blender with transparent front door | POA |

* A BagMixer® 400 Sample Blender with transparent front door and variable speed range (6-9 strokes per second) is available. Please contact our Technical Office on 01342 826836 for details.

454-084



454-085



454-080



454-081



BagFilter® Sterile Bags For Sample Blenders

All sterile bags by Interscience, BagFilter®, BagPage® and BagLight® fit all models of laboratory sample blender currently on the market. They are all sterilised by gamma irradiation.

BagFilter®

These are highly robust plastic bags with a filter compartment. After blending, the solid fibres remain captive in the filter compartment whereas the solution to be analysed is ready to be pipetted.

BagFilter® comes in two models – BagFilter® P is designed to allow removal of the filtrate by pipetting after blending and filtration, BagFilter® S has a transverse weld to retain the solid contents of the bag to allow pouring of the blended solution into a container.

BagPage® Plus

BagPage® Plus is an extremely robust plastic bag fitted with a full membrane filter, separating the two compartments. It has a wide opening for samples and is printed on the front for easy pipetting.

BagLight®

These are robust plastic bags designed for sample mixing without a filter. BagLight® bags are available in 100ml, 400ml and 3500ml sizes.

| Cat. No. | Description | Capacity, ml | Dimensions, mm | Pack | Price |
|----------|--|--------------|----------------|------|-------|
| 454-086 | BagLight® 100 Sample mixing bags without filter | 100 | 110x185 | 500 | POA |
| 454-087 | BagLight® 400 Sample mixing bags without filter | 400 | 180x290 | 1000 | POA |
| 454-088 | BagLight® 3500 Sample mixing bags without filter | 3500 | 380x510 | 500 | POA |
| 454-089 | BagFilter® 400 P Sample mixing bags with lateral surface filter. For pipetting | 400 | 190x300 | 500 | POA |
| 454-090 | BagFilter® 400 S Sample mixing bags with lateral surface filter. For pouring | 400 | 190x300 | 500 | POA |
| 454-091 | BagFilter® 3500 Sample mixing bags with lateral surface filter | 3500 | 380x510 | 100 | POA |
| 454-092 | BagPage® 100 Sample mixing bags with filter | 100 | 95x180 | 500 | POA |
| 454-093 | BagPage® Plus 400 Sample mixing bags with full surface filter | 400 | 190x300 | 500 | POA |
| 454-108 | BagPage® 3500 Sample mixing bags with filter | 3500 | 380x510 | 100 | POA |

Accessories

| Cat. No. | Description | Pack | Price |
|----------|--|------|-------|
| 454-094 | BagOpen® 400 bag opener stand for holding 400ml lab blender bags | 1 | POA |
| 454-095 | BagClip® 400 closing clips for 400ml lab blender bags | 50 | POA |
| 454-109 | BagClip® 3500 closing clips for 3500ml lab blender bags | 50 | POA |
| 454-096 | BagRack® 400 storage rack for 10x400ml bags with BagClip® | 1 | POA |

Other accessories are available, including drip tray for BagRack® 400. Please contact our Technical Office on 01342 826836 for details.



454-090 shown with 454-094



Mixers

Order by phone > 01342 826836 Order on-line > www.ecomcat.co.uk
 Order by fax > 01342 826771 Website > www.jencons.co.uk

Dilutors

New



454-211

Gravimat®, Gravimetric Dilutor

The Gravimat® is easy to use, fast and accurate. It automatically dilutes a solid sample with the appropriate mass of solvent and any diluting and dispensing method used may be selected directly on the screen. Using an accessory printer, results can be printed after each dilution. A customised dilution factor is saved automatically to be applied to the following dilution.

The unit is supplied with a BagOpen® 400 stand and base for use with 400ml bags (bags not supplied). The BagOpen® opens bags automatically; the bag is pinched and held open by adhesive gums. A BagOpen® 100 is available as an accessory allowing the Gravimat® to be used with 80/100ml bags.

- Fast, accurate and easy to use
- Stainless steel housing for easy cleaning
- Multilingual screen: English, French, German, Italian, Spanish, Chinese and Japanese
- Self-regulated weighing and dispensing system
- Compatible with LIMS, printer and barcode reader
- Dilution factor of 1/2 to 1/999
- Weighing and dispensing function in one unit

Single pump model - the pump distributes the liquid from the 5 litre bottle to the bag containing the sample. It allows the distribution of 250ml in 20 seconds thanks to a peristaltic pump. The Gravimat® is easily set-up without the need for tools. It may be equipped with a second pump in order to use a second dilutant.

New



454-212

454-213

454-211

Specification

| | |
|----------------------------------|--|
| Dilution time, seconds | <20 for 250ml <10 for 250ml with Booster kit |
| Dilution factor | 1/2 to 1/999 |
| Accuracy, g | <0.05 for sample weighing >99% for mass of liquid dispensing* |
| Maximum weight, g | 2,500 |
| Weighing platform accuracy, g | ±0.05 |
| Dispensing of liquid accuracy, g | ±0.1 |
| Output | RS232 for printer or LIMS. Printable parameters: date, time, user code, pump selection, sample ID, sample weight, total weight, dilution factor, dilution accuracy |
| Dimensions (wxdxh), mm | 250x300x420 |
| Electrical requirement | 220V/50Hz |
| Weight, kg | 10 |

* for a sample weight of >1g

| Cat. No. | Description | Price |
|----------|-----------------------------|-------|
| 454-210 | Gravimat® single pump model | POA |
| 454-211 | Gravimat® double pump model | POA |

The Gravimat® is supplied with BagOpen® 400 stand and base, 5 litre autoclavable bottle (1 per pump), autoclavable dispensing assemblies (2 per pump) and user manual.

Accessories

| Cat. No. | Description | Price |
|----------|--|-------|
| 454-212 | Printer (with 2 rolls of paper) | POA |
| 454-213 | Barcode reader | POA |
| 454-214 | Booster kit (double pump assembly and tubing)* | POA |
| 454-215 | 100ml bag kit (BagOpen® stand and base) | POA |
| 454-216 | 5 litre autoclavable bottle | POA |
| 454-217 | Calibrated Cofrac weight, 500g, F1 | POA |

* One or two booster kits can be ordered for the double pump model depending on requirements.

Other accessories are available including: dispensing arm for operation in air flow cabinets and consumables (dispensing assembly, air filters, tubing, printer paper and bags). Please contact our Technical Office on 01342 826836 for details.

Bags

| Cat. No. | Description | Capacity, ml | Dimensions, mm | Pack | Price |
|----------|---|--------------|----------------|------|-------|
| 454-086 | BagLight® 80 Sample mixing bags without filter | 80 | 110x185 | 500 | POA |
| 454-087 | BagLight® 400 Sample mixing bags without filter | 400 | 180x290 | 1000 | POA |



Blenders/Vortex

Order by phone > 01342 826836 Order on-line > www.ecomcat.co.uk
 Order by fax > 01342 826771 Website > www.jencons.co.uk

Seward, Stomacher Lab System

This system offers fast blending and processing of laboratory samples. It uses a mechanical action in which contoured paddles apply pressure to a sample bag, allowing homogenised samples to be produced continuously and cleanly and without fear of cross contamination.

The Stomacher 400, with its 80–400ml capacity, is an ideal size for the majority of blending applications. The Stomacher 3500 is designed for blending larger volumes from 1000–3500ml with a gentler action. The Stomacher 80 has all the technical features of the larger units but is a compact model with a capacity of 5–80ml.

Each Stomacher model in the range has microprocessor controls positioned for easy access, three pre-set processing speeds and three time settings, plus continuous running for operational flexibility.

To ensure optimum performance from your Stomacher lab blender use only genuine Seward Stomacher bags manufactured from specially formulated high quality polyethylene copolymer.

Specifications

| Model | 80 | 400 | 3500 |
|------------------------|-------------|-------------|-------------|
| Capacity, ml | 5–80 | 80–400 | 1000–3500 |
| Dimensions (wxdxh), mm | 290x320x190 | 350x330x280 | 480x480x440 |
| Power supply | 240V, 50Hz | 240V, 50Hz | 240V, 50Hz |

| Cat. No. | 454-016 | 454-018 | 454-033 |
|----------|---------|---------|---------|
| Price | POA | POA | POA |

| Cat. No. | Description | Price |
|----------|---|-------|
| 454-017 | Model 80, plain sterile bag, box of 2000 | POA |
| 454-145 | Model 400, plain sterile bag, box of 500 | POA |
| 454-146 | Model 400, perforated sterile bag with wire closure, rounded bottom, supplied in a box of 250 | POA |
| 454-147 | Model 400, plain sterile bag with internal strainer, supplied in a box of 200 | POA |
| 454-034 | Model 3500, plain sterile bag, box of 250 | POA |

Classic bags are available for older style Stomacher 400 models. Contact our Technical Office on 01342 826836.

IKA, MS 1 and MS 2 Vortex Mixers

The MS vortex mixer is a one-handed, variable speed unit for thorough mixing of samples in test tubes, blood collection tubes, and cuvettes, up to a maximum diameter of 30 mm. The rubber attachment for mixing the tubes can be interchanged with a large selection of attachments, some of which are supplied with the mixers. The unit offers continuous or intermittent operation with automatic start and stop. With a robust and slim ergonomic design, the unit is supplied with a two year warranty.

Specification

| | | | |
|------------------------|---------------|------------------------|------------|
| Models | MS 1 and MS 2 | Orbit, mm | 4.5 |
| Shaking frequency, rpm | 20–2500 | Dimensions (wxdxh), mm | 115x225x60 |
| Power supply | 230V, 50/60Hz | Weight, kg | 3.5 |

| Cat. No. | Description | Price |
|----------|--|-------|
| 454-054 | MS 2 vortex mixer, supplied complete with one-hand attachment with 85mm diameter foam platform | POA |
| 454-050 | MS 1 vortex mixer, supplied with a test tube attachment (6x10mm diameter tubes), one-hand insert and microtitre plate attachment | POA |

Heidolph, REAX Vortex Mixers

The REAX vortex mixer units are mounted in a highly stable, splash-proof, heavy die-cast housing. The vibrating nitrile rubber cap accommodates a variety of sizes of tubes and can be switched from periodic to continuous operation, with an automatic switch-off facility. The units have a three year warranty. Two models are available which both have a circular and vibrating motion:

REAX Top: with speed selection

REAX Control: with speed control for speeds in the low range (maximum control deviation $\pm 2\%$), which is an advantage when using holders.

Specification

| | | | |
|------------------------|---------------|------------------------|-------------|
| Shaking frequency, rpm | 0–2500 | Dimensions (wxhxd), mm | 134x105x172 |
| Power supply | 230V, 50/60Hz | Weight, kg | 3.3 |
| Orbit, mm | 5 | | |

| Cat. No. | Description | Price |
|----------|------------------------------------|-------|
| 454-068 | Heidolph REAX top vortex mixer | POA |
| 454-069 | Heidolph REAX control vortex mixer | POA |



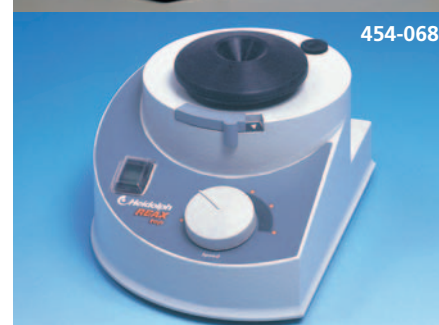
454-018



454-017



454-054



454-068



454-069



Mixers

Order by phone > 01342 826836 Order on-line > www.ecomcat.co.uk
 Order by fax > 01342 826771 Website > www.jencons.co.uk

Vortex

New



454-130

Stuart, SA7 and SA8 Vortex Mixers

For rapid mixing of samples contained in test tubes, small flasks and bottles. These mixer units have a robust die cast base to avoid unnecessary movement during use. There are two models, a fixed speed model and a variable speed model. The fixed speed model starts automatically when the cup is depressed.

- Ergonomic design with low profile
- Integral retort rod fixing (accepts 12.5mm diameter retort rod)
- Powerful vortex mixing action - ideal for a range of tubes
- Range of accessory heads available

Accessory heads for SA8

The pack of accessory heads contains: 1 x microtitre plate holder, 1 x circular foam insert for beakers and flasks (up to 500ml capacity), 1 x rectangular foam insert (hold 8 x 0.2ml, 8 x 0.5ml and 16 x 1.5ml microcentrifuge tubes), 1 x rectangular foam insert (blank for custom holes).

Specifications

| Model | SA7 | SA8 |
|--------------------|--------------|--------------|
| Speed setting, rpm | 2500 | 200-2500 |
| Orbit, mm | 4.2 | 4.2 |
| Continuous mode | No | Yes |
| Accessory heads | No | Yes |
| Maximum load | 1kg | 1kg |
| Dimensions, mm | 78x135x215 | 78x135x215 |
| Electrical supply | 90-240V, 20W | 90-240V, 20W |
| Weight, kg | 3.2 | 3.2 |

New

454-131 shown with microtitre plate holder (included in accessory pack 454-132)



| Cat. No. | Description | Price |
|----------|---|-------|
| 454-130 | SA7 Fixed speed vortex mixer | POA |
| 454-131 | SA8 Variable speed vortex mixer | POA |
| 454-132 | SA8/1 Accessory pack for microtitre plate and microcentrifuge tubes | POA |

New



583-120

Clifton, Cyclone Vortex Mixer

For rapid and efficient mixing. The Cyclone creates a vortex in the tube which gives the highly efficient mixing action. The unit may be set for continuous running at the chosen speed or on demand. The Cyclone is fitted with an automatic 'press-start' operation, providing instant action as the tube is pressed into the rubber cap. It also offers variable speed control over a wide speed range, from very slow mixing to vigorous shaking. The skirted rubber cup prevents liquid entering the mixer casing. It will accept vessels up to 25mm diameter. Excellent stability is achieved by a combination of weight and non-slip feet.

Specification

| | | | |
|-------------------|------------------|----------------|-------------|
| Operational modes | Continuous/touch | Dimensions, mm | 150x175x150 |
| Speed | 200-2800rpm | Weight, kg | 3.6 kg |
| Orbit | 7mm | | |

| Cat. No. | Description | Price |
|----------|---------------------------|-------|
| 583-120 | CM-1 Cyclone vortex mixer | POA |

New



454-310

IKA, lab dancer Vortex Mixer

A new, attractively designed, test tube shaker. Designed for mixing small samples with a touch function. The upper casing and the mixing surface are made from inert plastic. The bottom section is a coated, zinc die-casting. It is a fixed speed model (2800rpm) which starts automatically when the cup is depressed.

- For small containers up to 30 mm in diameter, e.g. test tubes, centrifuge tubes, Eppendorf vessels
- Small, compact and reliable
- Excellent mixing action
- Includes light 12V power pack set

Specification

| | |
|---------------------------------|-----------------------|
| Speed setting, rpm | 2800 |
| Orbit, mm | 4.5 |
| Operational mode | touch |
| Maximum load | 1 test tube/50ml max. |
| Motor rating input/output, W | 1.2/0.8 |
| Protection class | IP40 |
| Dimensions (Øxh), mm/Weight, kg | 100x70/0.55 |
| Electrical supply | 230V, 50/60Hz |

| Cat. No. | Description | Price |
|----------|-------------------------------------|-------|
| 454-310 | lab dancer fixed speed vortex mixer | POA |



Vortex/Rotary

Order by phone ▶ 01342 826836 Order on-line ▶ www.ecomcat.co.uk
 Order by fax ▶ 01342 826771 Website ▶ www.jencons.co.uk

Jencons-PLS Vortex Mixer

Continuously adjustable speed control makes the Jencons-PLS VX-100 vortex mixer useful for a variety of applications from gentle mixing of samples to resuspending pellets. Two modes of operation can be selected. 'Touch' control allows the unit to be activated only when needed by depressing the sample head. When set to 'on' the unit operates continuously.

The general purpose cup attachment supplied with the mixer accepts a variety of tube sizes. Additional heads are available for mixing larger sample tubes, multiple microtubes and microplates. Heavy duty construction ensures a long life. Suction cup feet keep the unit stable to prevent 'walking'. A small footprint allows the unit to be used virtually anywhere, including temperature controlled environments.

- Powerful motor for efficient mixing
- Safe for cold room or incubator use

Specification

| | |
|---|---------------------|
| Speed setting, rpm | 200-3000 |
| Modes of operation | Touch or continuous |
| Ambient operating temperature range, °C | +4 to 65 |
| Power supply | 230V, 50Hz |
| Dimensions (wxdxh), mm/Weight, kg | 120x155x130/5.5 |

| Cat. No. | Description | Price |
|--------------------|---|-------|
| 454-311 | VX100 variable speed vortex mixer with pop-off cup | POA |
| Accessories | | |
| 454-312 | Head attachment, 7.6cm (3") for mixing multiple tubes | POA |
| 454-313 | Head attachment for 60x microtubes, 0.5 or 1.5/2.0ml | POA |
| 454-314 | Head attachment for 1x standard or deep well microplate | POA |
| 454-315 | Head attachment for 12x 1.5ml tubes - held horizontally | POA |
| 454-316 | Head attachment for 4x 15ml tubes - held horizontally | POA |
| 454-317 | Head attachment for 2x 50ml tubes - held horizontally | POA |

Clifton, RM Series Rotary Mixers

The Clifton range of tube rotators are available as fixed or variable speed models with a broad range of optional accessory heads available for mixing micro tubes, tubes or flasks. The angle of mixing is fully adjustable and suitable for continuous or intermittent mixing. Benchtop or wall mountable, saving space.

- Range of accessories are autoclaveable
- 3 year warranty

Specifications

| Model | RM 1 | RM 2 |
|---|-------------------|-------------------|
| Speed, rpm | 30 | Variable 5 to 30 |
| Dimensions (with the disc vertical), mm | 210x250x200 | 210x250x200 |
| Electrical supply | 220-240V, 50/60Hz | 220-240V, 50/60Hz |
| Weight, kg | 5 | 5 |

| Cat. No. | Description | Price |
|--------------------|--|-------|
| 583-110 | RM-1 Rotary mixer, 30rpm fixed speed (requires mixer disk) | POA |
| 583-170 | RM-2 Rotary mixer, 5 to 30rpm variable speed (requires mixer disk) | POA |
| Accessories | | |
| 149-166 | RMD024 Rotary mixer disc with 24 clips for tube diameters 8mm to 11mm | POA |
| 149-165 | RMD012 Rotary mixer disc with 12 clips for tube diameters 15mm to 17mm | POA |
| 149-164 | RMD006 Rotary mixer disc with 6 clips for tube diameters 27mm to 30mm | POA |
| 583-171 | RMD24-3 Rotary mixer disc, 3 tier complete with 24 clips for each disc for tube diameters between 8mm and 11mm | POA |
| 583-172 | RMD012-3 Rotary mixer disc, 3 tier complete with 12 clips for each disc for tube diameters between 15mm and 17mm | POA |
| 583-173 | RMD016 Rotary mixer carousel for tube diameters up to 16mm | POA |
| 583-174 | RMD025 Rotary mixer carousel for tube diameters up to 25mm | POA |
| 583-175 | RMD-1 Rotary mixer disc without clips | POA |
| 149-150 | FC0025 Flask clip for 25ml flask for use with RMD-1 disc | POA |
| 149-151 | FC0050 Flask clip for 50ml flask for use with RMD-1 disc | POA |
| 149-152 | FC0100 Flask clip for 100ml flask for use with RMD-1 disc | POA |
| 149-153 | FC0250 Flask clip for 250ml flask for use with RMD-1 disc | POA |
| 149-193 | TC0811 Clip for 8mm to 11mm diameter tube for use with RMD-1 disc | POA |
| 149-194 | TC1517 Clip for 15mm to 17mm diameter tube for use with RMD-1 disc | POA |
| 149-195 | TC2730 Clip for 27mm to 30mm diameter tube for use with RMD-1 disc | POA |

454-311



New

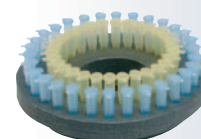
454-312

New



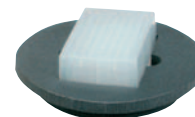
454-313

New



454-314

New



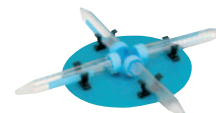
454-315

New



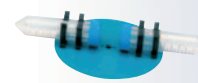
454-316

New



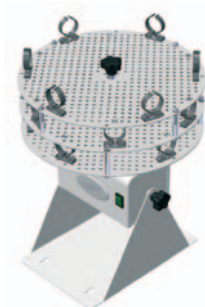
454-317

New



583-110
shown
with 583-171

New



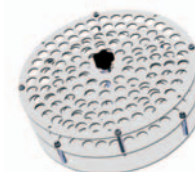
583-170
shown
with 149-164

New



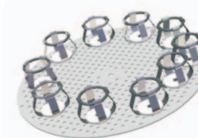
583-173

New



583-175
Flask clips
sold separately

New





Mixers

Order by phone > 01342 826836 Order on-line > www.ecomcat.co.uk
 Order by fax > 01342 826771 Website > www.jencons.co.uk

Rotary

New

454-140 shown with 454-142



Stuart, SB2 and SB3 Blood Tube Rotator Mixers

The Stuart rotators give gentle but effective mixing, ideal for keeping biological samples such as blood in suspension. There are two models to choose from; the fixed speed SB2 or the more advanced SB3, which has variable speed control and a digital timer as standard.

A choice of six accessory tube holders is available. For those requiring more adaptability and greater capacity an adaptor is available that allows two accessory tube holders to be used simultaneously* on either the SB2 or SB3. (* Excludes culture tube holders)

- Quick and easy loading and removal of tubes
- Fully adjustable tilt angle
- Suitable for use at 4°C to 60°C (incubators and coldrooms)
- Choice of two models - SB2 fixed speed at 20rpm - SB3 variable speed (2 to 40rpm) with timer
- Accessory tube holders to hold a number of different sized tubes

Specifications

| Model | SB2 | SB3 |
|------------------------|-----------------|-----------------|
| Rotation speed, rpm | Fixed 20 | Variable 2–40 |
| Timer | — | up to 999mins |
| Dimensions (wxdxh), mm | 200x270x240 | 200x270x240 |
| Weight, kg | 3.2 | 3.2 |
| Electrical supply | 230V, 50Hz, 50W | 230V, 50Hz, 50W |
| Cat. No. | 454-140 | 454-139 |
| Price | POA | POA |

New

454-139 shown with 454-141



Accessories tube holders

| Cat. No. | Description | Tube capacity | Price |
|----------------------------|---|--|-------|
| End-over-end action | | | |
| 454-141 | SB3/1 microcentrifuge tube holder (0.5ml and 1.5ml) | 40x10 to 11.5mm diameter tubes | POA |
| 454-142 | SB3/2 test/blood tube holder | 20x9 to 20mm diameter tubes | POA |
| 454-143 | SB3/3 50ml centrifuge tube holder | 12x25 to 35mm diameter tubes | POA |
| 454-207 | SB3/DUAL tube holder adaptor | Allows two tube holders to be used simultaneously* | POA |
| Rolling action | | | |
| 454-165 | SB3/4 culture/test tube holder | 63x12mm diameter tubes | POA |
| 454-166 | SB3/5 culture tube holder | 63x16mm diameter tubes | POA |
| 454-167 | SB3/6 culture tube holder | 30x26mm diameter tubes | POA |

* Excludes culture tube holders.

New

454-151



- Vibration orbit of 3mm
- Vibration accuracy to 2,000rpm
- Digital speed setting
- Digital process timer allows for unattended operation
- Protection class IP30
- Three year warranty

Specification

| | | |
|------------------------|---|-------|
| Shaking frequency, rpm | 150–2000 | |
| Orbit, mm | 3 | |
| Speed setting | Digital | |
| Power supply | 230/240 V, 50 Hz | |
| Dimensions (wxhxd), mm | 270x410x172 | |
| Weight, kg | 9.8 | |
| Cat. No. | Description | Price |
| 454-151 | MULTI REAX supplied with 2 carousel attachments | POA |



Vortex

Order by phone > 01342 826836 Order on-line > www.ecomcat.co.uk
 Order by fax > 01342 826771 Website > www.jencons.co.uk

Vortex-Genie 2® Vortex Mixer

The Vortex-Genie 2® vortex mixer is a mixer/shaker available with a wide range of mixing attachments. The popular vortex mixer has a heavy 4kg cast iron case with rubber feet to prevent vibration and creeping.

- Shaking or vortex action
- Variable speed control
- Robust and reliable
- Touch or continuous operation
- Quick-Change™ snap on/snap off attachments
- Chemically resistant attachments
- 2 year warranty
- Automatic touch start and stop, for one-handed operation

Specification

| | |
|-----------------------|--------------------------------------|
| Operational modes | Continuous/Touch with variable speed |
| Weight, kg | 4 |
| Dimensions (hxwx), mm | 165x121x156 |

The Vortex-Genie 2® is supplied with a 75mm diameter platform and a pop-off cup as standard. However it has a wide range of attachments described below which allow the mixing of fluids in virtually all types of small containers.

| Cat. No. | Description | Price |
|----------|--|-------|
| 454-077 | Vortex Genie 2® vortex mixer with platform and pop-off cup | POA |

Multiple Sample Starter Set

This includes a 150mm diameter platform, an insert for 60 microtubes (5.0mm to 10.5mm diameter) and an insert for a microplate.

| Cat. No. | Description | Price |
|----------|-----------------------------|-------|
| 454-078 | Multiple sample starter set | POA |

Large Sample Starter Set

Large sample set designed for varying sizes of beakers, flasks and large tubes. This includes a recessed platform, elasticated flask retainers and an assortment of foam inserts for tubes from 9mm to 37mm diameter.

| Cat. No. | Description | Price |
|----------|--------------------------|-------|
| 454-079 | Large sample starter set | POA |

TurboMix™ High Performance Attachment

This attachment is designed to dramatically increase vortexing efficiency in 1.5ml snap-cap tubes or 2.0ml screw-cap tubes. Applications include cell disruption of yeast, bacteria, plant and animal tissue when used in glass bead procedures. Suitable for use in cold rooms or incubators. Includes a mounting bracket assembly and tube holder for either (12) 1.5ml snap-top tubes or (12) 2.0ml screw-top tubes.

Specification

| | |
|-----------------------|----------------------------------|
| Capacity | 12x1.5ml or 12x2.0ml tubes |
| Construction | Stainless steel mounting bracket |
| Dimensions (hxwx), mm | 200x112x169 (Installed on mixer) |

| Cat. No. | Description | Price |
|----------|--|-------|
| 454-097 | TurboMix™ high performance attachment, 12x1.5ml tubes | POA |
| 454-177 | TurboMix™ high performance attachment, 12x2.0ml tubes | POA |
| 454-178 | Micro tube holder for TurboMix™, 12x1.5ml snap-top tubes* | POA |
| 454-136 | Micro tube holder for TurboMix™, 12x2.0ml screw-top tubes* | POA |

* Interchangeable tube holders for TurboMix™ attachments

Small Ampoule/Tube Attachment

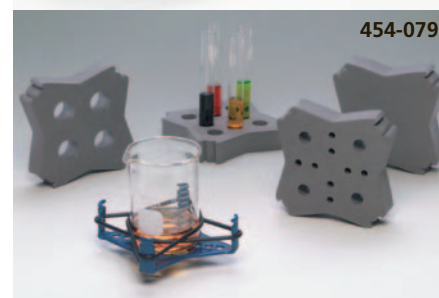
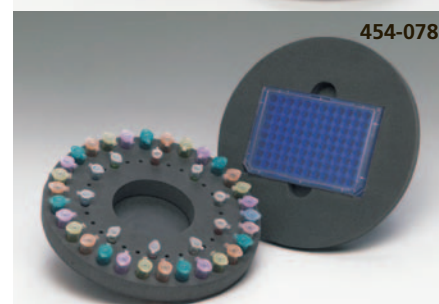
Attachment for vigorous end-to-end agitation combined with vortexing up to four 15mm to 17mm diameter plastic tubes; or 15mm to 17mm diameter glass or plastic ampoules.

| Cat. No. | Description | Price |
|----------|------------------------------------|-------|
| 454-114 | Small ampoule/tube head attachment | POA |

Large Ampoule/Tube Attachment

Attachment that provides vigorous end-to-end agitation combined with vortexing for up to four 10mm to 17mm diameter glass or plastic tubes or ampoules.

| Cat. No. | Description | Price |
|----------|------------------------------------|-------|
| 454-137 | Large ampoule/tube head attachment | POA |





Mixers

Order by phone > 01342 826836 Order on-line > www.ecomcat.co.uk
 Order by fax > 01342 826771 Website > www.jencons.co.uk

Vortex

New

454-133



Vortex-Genie® 1 Vortex Mixer

The Vortex-Genie® 1 Touch Mixer is a constant high-speed mixer which is easy to use and provides the strongest vortex mixing available in any mixer. The operator simply holds the container on the mixing attachment and the mixer starts automatically at maximum speed. Stops on release. Built of a solid 4kg metal casting with rubber feet that prevent walking. Optional platform attachment available. 2 year warranty.

Specification

| | |
|----------------------------------|----------------|
| Modes of operation | Touch |
| Power supply | 230/240V, 50Hz |
| Dimensions (lwxh), mm/Weight, kg | 165 x122x165/4 |

The Vortex-Genie® 1 is supplied with a pop-off cup as standard, which accommodates single test tubes. An optional 7.6cm (3 inch) platform suitable for beakers, flasks and multiple test tubes is also available.

| Cat. No. | Description | Price |
|----------|--|-------|
| 454-133 | Vortex-Genie® 1 vortex mixer for touch mixing with pop-off cup | POA |
| 454-134 | Platform head, 7.6cm (3") | POA |

454-134



Disruptor Genie™, Cell Disruptor

The Disruptor Genie™ is an affordable alternative to expensive ultrasonic disruptors. Automatic timer or continuous operation. The Disruptor Genie™ provides patented multi-directional action which simultaneously agitates and vortices at high speed, dramatically increasing disruption efficiency.

Spherical lead free soda lime glass beads are available in two sizes. Applications include rapid disruption of yeast cells, bacteria, plant and animal tissue, pellet resuspensions, glass bead procedures. Suitable for use in cold rooms or incubators. Built of a solid 4kg metal casting with rubber feet that prevent walking. Two models are available, the 1.5ml Disruptor Genie™ holds up to twelve 1.5ml snap-top microtubes, whilst the 2.0ml Disruptor Genie™ holds up to twelve 2.0ml screw-top microtubes. 2 year warranty.

Specification

| | |
|----------------------------------|---------------------------------|
| Modes of operation | Timer (0-15 mins) or continuous |
| Power supply | 230/240V, 50Hz |
| Dimensions (lwxh), mm/Weight, kg | 165 x122x190/4.3 |

| Cat. No. | Description | Price |
|----------|---|-------|
| 454-135 | 1.5ml Disruptor Genie™ supplied with 1.5ml microtube holder and pop-off cup | POA |
| 454-136 | Micro tube holder, 12x2.0ml screw-top tubes | POA |
| 454-179 | 2.0ml Disruptor Genie™ supplied with 2.0ml microtube holder and pop-off cup | POA |
| 454-178 | Micro tube holder, 12x1.5ml snap-top tubes | POA |
| 454-180 | 0.1mm diameter beads for bacteria | POA |
| 454-181 | 0.5mm diameter beads for yeast | POA |

New

454-135

New

454-179



New

454-060



WiggenHauser, VM Vortex Mixers

The new VM series vortex mixers from WiggenHauser are available in standard and digital versions. Both models feature touch and continuous operation, have a speed range of 0–3600rpm and generate excellent vortex mixing in test tubes and capped vials. The VM are fitted with rubber feet to prevent the mixers from “walking” across the laboratory bench, and are supplied with a standard test tube attachment and a standard 3 inch platform head for Erlenmeyer flasks and larger vessels. Two year warranty.

Specifications

| Model | VM Digital | VM Standard |
|----------------------|--|------------------|
| Speed setting, rpm | 0–3600 | 0–3600 |
| Speed display | Digital display (rpm) | Scale |
| Orbit, mm | 4 | 4 |
| Operational mode | continuous/touch | continuous/touch |
| Dimensions (Øxh), mm | 145x90 | 145x90 |
| Electrical supply | 100–240V, 50–60Hz with 12 volt adaptor (both models) | |
| Weight, kg | 0.6 | 0.6 |

New

454-037

New

454-038



| Cat. No. | Description | Colour | Price |
|----------|--|--------|-------|
| 454-059 | VM Digital, variable speed vortex mixer with digital display | Blue | POA |
| 454-060 | VM Standard, variable speed vortex mixer | Blue | POA |
| 454-035 | VM Digital, variable speed vortex mixer with digital display | White | POA |
| 454-037 | VM Standard, variable speed vortex mixer | White | POA |
| 454-036 | VM Digital, variable speed vortex mixer with digital display | Green | POA |
| 454-038 | VM Standard, variable speed vortex mixer | Green | POA |

Other colours are available; please contact our Technical Office on 01342 826836 for details.



Multi-purpose

Order by phone > 01342 826836 Order on-line > www.ecomcat.co.uk
 Order by fax > 01342 826771 Website > www.jencons.co.uk

Roto-Shake Genie™ Mixer/Rotator/Rocker

The Roto-Shake Genie™ is designed to provide rotating and rocking in one compact and durable unit. An optional 3-D orbital shaker attachment transforms the unit into an orbital shaker. The moving portion consists of a two-sided, 203x343mm stainless steel platform which easily converts from rotating to rocking. The surfaces are magnetised to hold a non-skid metal rocker tray and various sizes of auto-clavable spring-clip mounting plates.

- Changes function with a simple mechanical adjustment or platform replacement
- Easily removed magnets and platform
- Maintains set speed between 0°C and 38°C
- Ensures complete and even soaking of membrane-based blot assays/ washings
- Various size tubes, as well as large membrane blots, can be rotated or rocked simultaneously
- Attachments can be mounted at any angle
- Suitable for use in cold rooms and incubators
- Wide variety of accessories for maximum versatility
- Two year warranty

Specification

Standard capacity (with supplied clips):

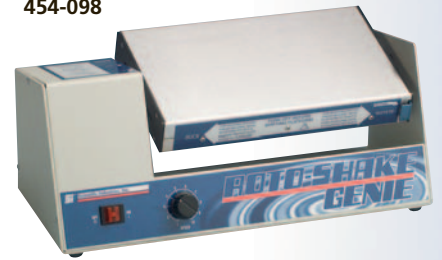
| | Supplied with: | Capacity: |
|-----------------------|---|---|
| Tubes | 1 plate (12 clips per plate) 1 plate (6 clips per plate) 1 plate (3 clips per plate) | 12 tubes (10–13mm diameter) 6 tubes (15–17mm diameter) 3 tubes (28–30mm diameter) |
| Bags | 4 magnetic stainless steel mounting strips | 2 plastic bags (152x152mm) |
| Trays | 1 non-skid metal rocker tray (305x305mm) | Any number of samples (up to 305x305mm) |
| Size (hwxwd), mm | 267x508x252 (305 with metal rocker platform) | |
| Weight, kg | 11.8 | |
| Speeds | Rocking: infinitely variable from 10–70 cycles per minute Rotating: infinitely variable from 5–35rpm | |
| Rocking angle | ±10° from the horizontal | |
| Workload capacity, kg | 4.5 | |

| Cat. No. | Description | Price |
|----------|--|-------|
| 454-098 | Roto-Shake Genie™, supplied with 3 plates, 4 mounting strips and rocker tray | POA |

Accessories

| Cat. No. | Description | Price |
|----------|---|-------|
| 454-100 | Expansion kit containing 6 additional plates increases capacity to 84 (10–13mm) tubes (including plates already supplied with unit) | POA |
| 454-101 | Expansion kit containing 6 additional plates increases capacity to 42 (15–17mm) tubes (including plates already supplied with unit) | POA |
| 454-102 | Expansion kit containing 6 additional plates increases capacity to 21 (28–30mm) tubes (including plates already supplied with unit) | POA |
| 454-106 | Expansion kit containing 16 magnetic stainless steel mounting strips, increases capacity to 4 bags maximum | POA |
| 454-107 | Expansion kit containing 2 trays and 24 mounting strips, increases capacity to 8 (152x152mm) bags (including strips already supplied with unit) | POA |
| 454-103 | Single clip mounting plate, 10–13mm dia. tubes | POA |
| 454-104 | Single clip mounting plate, 15–17mm dia. tubes | POA |
| 454-105 | Single clip mounting plate, 28–30mm dia. tubes | POA |
| 454-121 | Hybridisation tubes plates (2) | POA |
| 454-124 | Universal clip plate attachment (2) | POA |
| 454-125 | Covered rack for 100 microtubes | POA |
| 454-126 | 100ml Volumetric flask attachment | POA |
| 454-127 | 3-D Orbital shaker attachment | POA |

454-098



454-098



Simultaneous Rocking/Rolling/Rotating

454-098



Rocking/Shaking

454-098



Rotating





Mixers

Order by phone > 01342 826836 Order on-line > www.ecomcat.co.uk
 Order by fax > 01342 826771 Website > www.jencons.co.uk

Multi-purpose Refrigerated Incubator

454-099



Rocking



Rotating



Stirring



454-102



454-107

Enviro-Genie® , Temperature Controlled Bench-top Refrigerator/Incubator/Rotator/Stirrer/Rocker/3-D Orbital Shaker

The Enviro-Genie® is the ideal self-contained bench-top culture incubator for the study of micro-organisms and tissue cell growth under strictly controlled conditions of temperature and agitation.

Designed to provide the security of precise temperature control and uniformity necessary for demanding incubation/ refrigeration applications without taking up a great deal of space.

It performs membrane-based assays/ washings and hybridisations more efficiently. Chamber air is gently and continuously circulating at a rate that ensures the temperature consistency and uniformity of all test samples. Shatter-resistant viewing window allows for inspection of samples, without affecting the chamber environment.

- Rocks. With digital control/ display from 2 to 70 cycles per minute
- Rotates. With digital control/ display from 1 to 35rpm
- Stirs. Two magnetic stirrers with digital control/ display from 1 to 2000rpm and featuring 'Stir Reverse' facility
- Optional 3-D orbital shaker attachment
- Accommodates most standard tubes, vials, beakers, plates, bags and trays. Wide variety of accessories available
- Can be used as standard incubator/ refrigerator

Microprocessor controls easily achieve the desired rotating, rocking and stirring speed. Temperature and time are displayed on large LED's for accurate reproducible conditions. Timer displays 'elapsed time' or 'remaining time', until programmed off. There are visible and audible alarms for both temperature and time. Equipped with an RS232 port for data acquisition and optimal control. Unit can easily be cleaned and decontaminated.

Specification

| | | | |
|-----------------|-------|----------------|---|
| Temperature, °C | | Time, hours | Programmable to 96 |
| Heating | to 75 | Alarms | Visible and audible, temperature and time |
| Cooling | to 4 | Dimensions, mm | 495x622x368 |
| Accuracy | ±0.2 | Weight, kg | 36 |
| Uniformity | ±0.5 | | |
| Resolution | 0.1 | | |
| Stability | ±0.1 | | |

| Cat. No. | Description | Price |
|----------|---|-------|
| 454-099 | Enviro-Genie® bench-top incubator/refrigerator* | POA |

* Enviro-Genie® is supplied complete with: Magnetic platform, 3 plates for 10-13, 15-17 and 28-30mm tubes, 4 mounting strips, non-skid metal rocker tray, two magnetic stirrers and one wire rack

Accessories

| Cat. No. | Description | Price |
|----------|---|-------|
| 454-100 | Expansion kit containing 6 additional plates increases capacity to 84 (10-13mm) tubes (including plates already supplied with unit) | POA |
| 454-101 | Expansion kit containing 6 additional plates increases capacity to 42 (15-17mm) tubes (including plates already supplied with unit) | POA |
| 454-102 | Expansion kit containing 6 additional plates increases capacity to 21 (28-30mm) tubes (including plates already supplied with unit) | POA |
| 454-106 | Expansion kit containing 16 magnetic stainless steel mounting strips, increases capacity to 4 bags maximum | POA |
| 454-107 | Expansion kit containing 2 trays and 24 mounting strips, increases capacity to 8 (152x152mm) bags (including strips already supplied with unit) | POA |
| 454-103 | Single clip mounting plate, 10-13mm dia. tubes | POA |
| 454-104 | Single clip mounting plate, 15-17mm dia. tubes | POA |
| 454-105 | Single clip mounting plate, 28-30mm dia. tubes | POA |
| 454-121 | Hybridisation tubes plates (2) | POA |
| 454-122 | Wire rack | POA |
| 454-123 | Serial cable | POA |
| 454-124 | Universal clip plate attachment (2) | POA |
| 454-125 | Covered rack for 100 microtubes | POA |
| 454-126 | 100ml Volumetric flask attachment | POA |
| 454-128 | 3-D Orbital shaker attachment | POA |



Rotators/Rollers

Order by phone > 01342 826836 Order on-line > www.ecomcat.co.uk
 Order by fax > 01342 826771 Website > www.jencons.co.uk

Bag Rotator

Powerful and rugged rotator for effective mixing of transfer packs or random sealed bags, maintaining platelets and other sample components in suspension without risk of damage. The wire basket holds up to 40 standard 300ml transfer packs (5 packs per compartment).

- Specialised basket design prevents bag movement
- Can effectively mix contents of almost any sealed bag type
- Gentle yet thorough mixing eliminates the risk of sample damage or trauma
- Bags rotate 'end-over-end' with a fixed speed of 3rpm regardless of the number of bags
- Maintains platelets in even suspension throughout the bag
- Durable and robust motor provides reliability and reproducibility
- Heavy and durable base prevents unit from tipping over
- Two year warranty

Specification

| | |
|------------------------|---|
| Speed | Fixed rotation, 3rpm \pm 0.5rpm |
| Capacity | up to 40 standard 300ml transfer packs or random bags |
| Power supply | 230V, 50Hz, 0.08 amps |
| Dimensions (dxwxh), mm | 267x508x252 |
| Weight, kg | 7.7 |

| Cat. No. | Description | Price |
|--------------------|---------------------------------------|-------|
| 454-000 | Bag rotator supplied with wire basket | POA |
| Accessories | | |
| 454-001 | Replacement wire basket | POA |

RM1 Roller Mixer

The roller mixer has a fixed speed of 30rpm and is ideal for the mixing of cells. A drip tray allows small amounts of spillage to be easily cleaned.

- Rolling action, ideal for mixing cells
- Easily clean drip tray
- Bottles up to 50mm can be accommodated
- Small footprint
- Quiet operation

Specification

| | |
|--------------------------------|-------------|
| Speed range, rpm | 30 |
| Roller size, mm | 30x320 |
| Number of rollers | 5 |
| Bottle size, mm | up to 50 |
| Overall dimensions (wxdxh), mm | 390x190x110 |
| Carrying capacity, kg | 4.5 |

| Cat. No. | Description | Price |
|----------|--------------------|-------|
| 454-171 | RM1 5 Roller mixer | POA |

MM1 and MM5 Multimixers

The MM1 and MM5 Multimixers enable samples to be rocked whilst rolling, the perfect blending action. The units have variable speed (10–50rpm for rock action, 20–100rpm for roll action) and may be converted to roll only units. Bottles up to 114mm can be accommodated.

- Rocking and rolling action for complete mixing
- Can be converted to roll only unit
- Bottle up to 114mm can be accommodated

Specification

| | |
|--------------------------------|---|
| Speed range, rpm | 10 to 50 (rock action)/20–100 (roll action) |
| Roller size, mm | 30x320* |
| Bottle size, mm | 12-114 |
| Overall dimensions (wxdxh), mm | 385x350x175 |
| Carrying capacity, kg | 6 |
| Electrical requirements, V/Hz | 220/50 |

* Rollers can be removed to accommodate larger bottles, but an idler gear is required. Please contact our Technical Office on 01342 823836 for details.

| Cat. No. | Description | Price |
|----------|-------------------------|-------|
| 454-169 | MM1 5 Roller Multimixer | POA |
| 454-170 | MM5 9 Roller Multimixer | POA |



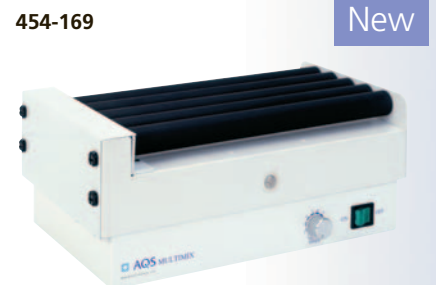
454-000

New



454-171

New



454-169

New



Mixers

Order by phone ▶ 01342 826836 Order on-line ▶ www.ecomcat.co.uk
 Order by fax ▶ 01342 826771 Website ▶ www.jencons.co.uk

Rotary/Vortex

New

454-119

4400 Cell Mixer



The 4400 cell mixer was designed for the mixing of cells and for use in extraction procedures. The drum rotates at a fixed speed of 30rpm and will hold up to 32 tubes. The clips supplied will accommodate tubes from 11-13mm diameter.

Specification

| | |
|--------------------------------|----------------|
| Speed range, rpm | 30 |
| Tube capacity | 32 |
| Tube size, mm | 11–13 diameter |
| Overall dimensions (wxdxh), mm | 160x220x200 |
| Carrying capacity, kg | 1 |
| Electrical requirements, V/Hz | 220/50 |

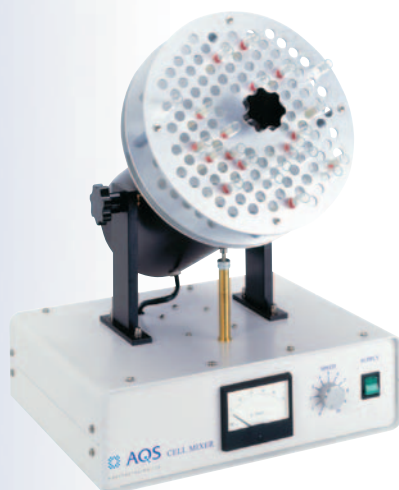
Other tubes sizes can be accommodated (e.g. 20mm, 25mm tubes), please contact our Technical Office on 01342 826836 for details.

| Cat. No. | Description | Price |
|----------|-----------------|-------|
| 454-119 | 4400 Cell mixer | POA |

New

454-172 shown with 454-174

CM200 Cell Mixer Majors



The CM200 cell mixer majors were introduced to fill the needs of many users who use a variety of tube sizes. These instruments with their removable tube carousel (not supplied) will allow the user to mix cells in almost any size tube length or diameter. The variable speed (0 to 10rpm or 0 to 30rpm) indicated on the analogue meter allows the operator to reproduce experimental conditions.

Specification

| | |
|--------------------------------|-----------------------------------|
| Speed range, rpm | 0–10 or 0–30 |
| Tube size, mm | Must be specified by the customer |
| Overall dimensions (wxdxh), mm | 540x450x410 |
| Electrical requirements, V/Hz | 220/50 |

| Cat. No. | Description | Price |
|----------|--|-------|
| 454-172 | Cell mixer, 0-10rpm, supplied without carousel | POA |
| 454-173 | Cell mixer, 0-30rpm, supplied without carousel | POA |
| 454-174 | Custom tube carousel* | POA |

* Customer to supply tube diameter and length. Please contact our Technical Office on 01342 826836 for details.

New

454-112

V400 Multi-Vortexer



The V400 Vortexer was designed as a multiple tube vortexer. A new model has been designed to accommodate deepwell microplates. The unit has a capacity of up to 150 micro reaction tubes or 4 deepwell microplates and provides effective and consistent vortexing throughout. This is achieved via a unique 'floating' vortexing plate that has continuously adjustable energy input. The unit comes complete with an adjustable carrying plate. The speed is variable between 800-2300rpm and the height between the carrying plate and the adjustable plate is 100mm.

Specification

| | |
|--------------------------------|--|
| Speed range, rpm | 800 to 2300 |
| Vortexing plate dimensions, mm | 300x255 |
| Overall dimensions (wxdxh), mm | 400x310x420 |
| Carrying capacity | 150 micro reaction tubes or 4 deepwell microplates |
| Carrying capacity, kg | 3 |
| Electrical requirements, V/Hz | 220/50 |

Models with timers are available (0-5mins and 0-70mins), please enquire on 01342 826836.

| Cat. No. | Description | Price |
|----------|---|-------|
| 454-112 | V400 Multi-vortexer | POA |
| 454-168 | V400DW Multi-vortexer for deepwell plates | POA |



Suspension

Order by phone ▶ 01342 826836 Order on-line ▶ www.ecomcat.co.uk
 Order by fax ▶ 01342 826771 Website ▶ www.jencons.co.uk

M802 Suspension Mixer

The M802 Suspension mixer utilises a unique mixing action that enables carefully controlled and reproducible conditions to be maintained. It is suitable for a wide variety of applications including Coombes, serological and agglutination tests as well as blood mixing. The platform rotates on a central axis with the angle of tilt oscillating between 0° and the set angle (max 15°). Speeds between 10–100rpm are achievable.

Specification

| | |
|--------------------------------|---------------------------------|
| Speed range, rpm | 10 to 100 |
| Angle of tilt, ° | 0 to 15 (continuously variable) |
| Platform size, mm | 330x245 |
| Overall dimensions (hwxwd), mm | 406x311x165 |
| Carrying capacity, kg | 2.75 |
| Electrical requirements, V/Hz | 220/50 |

| Cat. No | Description | Price |
|---------|-----------------------|-------|
| 454-110 | M802 Suspension mixer | POA |

An analogue timer can be fitted, please contact our Technical Office on 01342 826836 for details.

Platform Inserts

| Cat. No | Description | Price |
|---------|--|-------|
| 454-182 | CP/1 for 28x Microscope slides 76x25mm | POA |
| 454-183 | CP/2 for 16x Microscope slides 76x51mm | POA |
| 454-184 | CP/3 for 12x Microscope slides 76x54mm | POA |
| 454-185 | CP/4 for 35x10ml Conical flasks | POA |
| 454-186 | CP/5 for 24x25ml Conical flasks | POA |
| 454-187 | CP/6 for 20x50ml Conical flasks | POA |
| 454-188 | CP/7 for 12x100ml Conical flasks | POA |
| 454-189 | CP/8 for 6x250ml Conical flasks | POA |
| 454-190 | CP/9 for 6x500ml Conical flasks | POA |
| 454-191 | CP/10 for 20x100ml Beakers | POA |
| 454-192 | CP/11 for 2x Haemagglutination plates - 8 cavity | POA |
| 454-193 | CP/12 for 4x Microtitre plates | POA |
| 454-194 | CP/13 for 10x Boerner merco plates | POA |
| 454-195 | CP/14 for 4x Coplin jars | POA |
| 454-196 | CP/15 for 6x Petri dishes 90mm | POA |
| 454-197 | CP/16 for 16x Glass universal bottles | POA |
| 454-198 | CP/17 for 12x Quickfit and quartz MF/24 tubes (specify tube diameter and length) | POA |
| 454-199 | CP/18 for 1x Winchester bottle | POA |
| 454-200 | CP/19 for Leakproof tray 50mm deep | POA |
| 454-201 | CP/20 for Adjustable plate (with two adjustable rollers) | POA |
| 454-202 | CP/21 for 6x Diagnostic cards (77x128mm) | POA |
| 454-203 | CP/22 for 2x1000ml Conical flasks | POA |
| 454-204 | CP/23 for 3x250ml Separating funnels | POA |
| 454-205 | CP/24 for 2x500ml Separating funnels | POA |
| 454-206 | CP/25 for 1x1000ml Separating funnel | POA |

454-110

New





Mixers

Order by phone > 01342 826836 Order on-line > www.ecomcat.co.uk
Order by fax > 01342 826771 Website > www.jencons.co.uk

Vortex



New

454-158

Grant-bio, PV-1 Vortex Mixer

Ideally sized for personal use, the Grant-bio PV-1 vortex mixer is compact, with a low profile and small footprint. The reliable motor produces regulated and reproducible agitation throughout the speed range. It is also extremely quiet.

With variable speed from 300 to 3000 rpm, the PV-1 can be used for gentle through to vigorous mixing and pellet resuspension in 0.5ml, 1.5ml, and 15ml tubes. Suitable for operation in room temperatures from 4 to 45°C, the PV-1 can be used in many different environments, including cold rooms, fume hoods and Class II microbiological cabinets.

The PV-1 is extremely simple to operate, with either continuous or touch operation and adjustable speed control. The shaking mechanism is robust and durable, it is housed in a sturdy case, resistant to common laboratory chemicals.

- Pressure sensitive cup for tubes up to 20mm diameter
- Rubber suction pads prevent walking and absorb vibration
- Low voltage power supply enables safe cold room operation
- Low energy consumption
- Meets the requirements of IEC61010 parts 1 and 2
- CE marked
- Two year warranty



New

454-158

Specification

| | |
|-------------------------------|-------------|
| Speed, rpm | 300 to 3000 |
| Orbit, mm | 2 |
| Max. tube diameter, mm | 20 |
| Ambient temperature range, °C | 4 to 45 |
| Dimensions (wxdxh), mm | 82x145x75 |
| Input voltage, V | 12 |
| Input type | dc |
| Input current, A | 1.2 |

| Cat. No. | Description | Price |
|----------|-------------------|-------|
| 454-158 | PV-1 Vortex mixer | POA |



New

454-159

Grant-bio, Combi-spin PCV-2400 and Multi-spin PCV-3000 Combined Centrifuge/Vortex Mixers

The Grant-bio Combi-spin and Multi-spin are combined centrifuge/vortex mixers for spinning and mixing of microtubes and 0.2ml strips. Both instruments can be used for independent centrifuge and vortex mixing applications. Combi-spin can also be used for vortex mixing of an individual tube concurrently with spinning of multiple tubes, while Multi-spin enables consecutive spin and mix phases of multiple tubes. Each comprising two instruments in one, Combi-spin and Multi-spin are compact and convenient, fitting neatly into the smallest workspace.

Applications

Suitable for spin-mix-spin applications in many fields, including:

- PCR diagnostic laboratories
 - Biochemical clinical laboratories
- Specific applications include:
- Preparing samples prior to PCR reactions, gel electrophoresis and enzyme reactions immunoprecipitations
 - Cell permeabilisation by chelating or hydrophobic agents for reaction *in-situ*
 - Low solubility drug testing
 - Cell washing from culture media after fermentation

Features

- Two interchangeable rotors supplied as standard for:
 - 12x1.5/2.0ml microtubes
 - 12x0.5ml + 12x0.2ml microtubes
- Optional rotors for:
 - 8x1.5/2.0ml + 8x0.5ml microtubes
 - 6x1.5/2.0ml + 6x0.5ml + 6x0.2ml microtubes
 - 2x8-well 0.2ml microtube strips
- Safety interlock stops the rotor when the lid is opened
- Amazingly quiet
- Extremely easy to operate
- Operating ambient temperature range 4°C to 45°C, for use in a cold room or incubator
- Low energy consumption
- Meets the requirements of IEC61010 parts 1 and 2
- CE marked
- Two year warranty



New

454-160 shown with accessory rotor 454-162



Vortex

Order by phone ▶ 01342 826836 Order on-line ▶ www.ecomcat.co.uk
 Order by fax ▶ 01342 826771 Website ▶ www.jencons.co.uk

Grant-bio, Combi-spin PCV-2400 and Multi-spin PCV-3000 Combined Centrifuge/Vortex Mixers, continued...

Combi-spin

Tubes are loaded into the rotor for simultaneous spinning, then removed for individual mixing in the vortex cup, which is located at the top of the central shaft. With the vortex cup emerging through an opening in the closed lid, individual tubes can be mixed while a full load of tubes is spinning.

- Fixed speed combined centrifuge/vortex mixer
- Fixed speed: 2,400rpm
- Continuous operation or short spin

Multi-spin

Multi-spin enables consecutive spin and mix phases of multiple tubes. Tubes are loaded into the rotor for spinning and remain in position for vortex mixing. User control of all parameters ensures maximum flexibility and complete sample reproducibility, with accurate setting of spin speed and mixing level, and a time setting for each. Consecutive spin and mix phases can be linked and a sequence of linked phases may be repeated up to 999 times. Set-up is extremely easy and the two line LCD display clearly indicates the current operating status.

With the tubes positioned in the rotor during the mix step, the mixing strength is fully reproducible.

- Adjustable speed combined centrifuge/vortex mixer
- Spin speed: 1,000 to 3,500rpm, adjustable in steps of 100rpm
- Integral spin timer, 1 second to 99 minutes, with automatic switch-off
- Vortex mixing speed adjustable in three levels: soft, medium, hard
- Integral mix timer, 1 to 20 seconds, with automatic switch-off
- Low voltage power supply enables safe cold room operation

Reduced volumes

By the simple practice of spinning samples before and after mixing, lower reagent volumes can be used without any increase in sample error, and the Combi- and Multi-spin were developed specifically for this purpose. Combi-spin is highly effective for use with volumes down to approximately 50µl, and Multi-spin can be used with volumes as low as 5µl.

Specifications

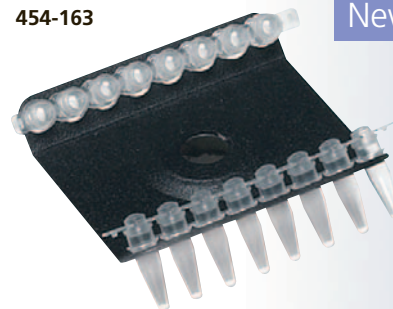
| Model | Combi-spin PCV-2400 | Multi-spin PCV-3000 |
|-----------------------------------|--|--------------------------------------|
| Maximum RCF, xg | 700 | 1000 |
| Speed, rpm | 2400 | 1000 to 3500 |
| Spin time | continuous up to 60 mins or short spin | continuous or timer: 1 sec to 99 min |
| Mixing intensity | n/a | soft, med, hard |
| Mixing time, sec | n/a | 1 to 20 |
| Cycle regulation | n/a | 1 to 999 |
| Tube capacity | 12x1.5/2.0ml 12x0.5ml + 12x0.2ml | 12x1.5/2.0ml 12x0.5ml + 12x0.2ml |
| Footprint (wxd), mm | 225x180 | 225x180 |
| Height, mm | 115 | 115 |
| Ambient operating temperature, °C | 4 to 45 | 4 to 45 |
| Input voltage, V | 220-240/110-120 | 12 |
| Input type | AC (50-60Hz) | DC |
| Input current, A | 0.63 (220-240V) | 1 |

| Cat. No. | Description | Price |
|----------|--|-------|
| 454-159 | Combi-spin PCV-2400 combined centrifuge/vortex mixer supplied with two interchangeable rotors (12x1.5/2.0ml microtubes & 12x0.5ml + 12x0.2ml microtubes) | POA |
| 454-160 | Multi-spin PCV-3000 combined centrifuge/vortex mixer supplied with two interchangeable rotors (12x1.5/2.0ml microtubes & 12x0.5ml + 12x0.2ml microtubes) | POA |

Interchangeable Rotors

| Cat. No. | Description | Price |
|----------|--|-------|
| 454-161 | 8x1.5/2.0ml plus 8x0.5ml microtubes | POA |
| 454-162 | 6x1.5/2.0ml plus 6x0.5ml plus 6x0.2ml microtubes | POA |
| 454-163 | 2x8-well 0.2ml microtube strips | POA |

454-163



New

454-161



New



Mixers

Order by phone > 01342 826836 Order on-line > www.ecomcat.co.uk
 Order by fax > 01342 826771 Website > www.jencons.co.uk

Rotators

New

454-153



New

454-153 shown with 454-155



Grant-bio, PTR-30, PTR-60 360° Vertical Multi-Function Rotators

The Grant-bio PTR-30 and PTR-60 multi-function rotators provide all that is required for thorough mixing of microtubes, for reproducible sample preparation:

- 360° vertical rotation
- Reciprocal rotation, turning angle from 15° to 90°
- Vibration, settable in a burst of 1 to 5 seconds
- 5 second pause
- All actions may be set for continuous or timed operation and individual phases may be linked together for absolute flexibility:
 360° vertical rotation; 360° and reciprocal; 360° and reciprocal and vibration; 360° and reciprocal and pause; reciprocal; reciprocal and pause; vibration and reciprocal.

The Grant-bio vertical rotators are compact, with a low profile and small footprint, fitting neatly into the smallest workspace.

The stepper motor produces regulated and reproducible rotation throughout the speed range and, combined with the sturdy construction, will guarantee years of consistent operation. The Grant-bio vertical rotators are quiet and extremely easy to operate, with very simple set-up of a multi-segment program, using the two line set-up and status display.

Features:

- Standard platform for microtubes up to 15mm diameter
- Low voltage power supply enables safe cold room operation
- Operating ambient temperature range 4°C to 45°C - for use in a cold room or an incubator
- Low energy consumption
- Meets the requirements of IEC61010 parts 1 and 2
- CE marked
- Two year warranty

Mixing of small volumes is extremely difficult due to surface tension of viscous liquids, but insufficient mixing can lead to a high percentage error. 360° vertical rotation (turning the tube end over end) has a highly efficient mixing effect. The Grant-bio PTR-30 and PTR-60 not only provide 360° vertical rotation, they also emulate other manual actions used for mixing in small tubes: reciprocal rotation has the effect of backward and forward shaking, a brief pause allows droplets to slide down the tube walls and the vibration motion emulates a light tap with a finger.

Specifications

| Model | PTR-30 | PTR-60 |
|--------------------------------|---|-------------|
| Capacity, microtubes standard | 22 | 48 |
| General timer | 1min to 24hrs (with automatic switch-off) (both models) | |
| 360° vertical mode | | |
| Speed, rpm | 5 to 30 | 5 to 60 |
| Timer, sec | 1 to 250 | 1 to 250 |
| Reciprocal mode | | |
| Turning angle, ° | 15 to 90 | 15 to 90 |
| Timer, sec | 1 to 250 | 1 to 250 |
| Vibration mode | | |
| Turning angle, ° | 1 to 5 | 1 to 5 |
| Timer, sec | 1 to 5 | 1 to 5 |
| Pause, sec | 1 to 5 | 1 to 5 |
| Number of cycles | 1 to 125 | 1 to 125 |
| Maximum load, kg | 0.4 | 0.8 |
| Overall dimensions (wxdxh), mm | 310x125x175 | 420x230x230 |
| Electrics | 12V DC, 1.2A | 12V DC, 5A |

| Cat. No. | Description | Price |
|----------|--|-------|
| 454-153 | PTR-30, 360° Multi-function rotator supplied with platform for 22 microtubes | POA |
| 454-154 | PTR-60, 360° Multi-function rotator supplied with platform for 48 microtubes | POA |

Accessories

| Cat. No. | Description | For model | Price |
|----------|---|-----------|-------|
| 454-155 | Platform for 4 tubes up to 30mm diameter (e.g. 50ml centrifuge tubes) plus 12 tubes up to 15mm diameter (e.g. 1.5ml, 2.0ml tubes) | PTR-30 | POA |
| 454-156 | Platform for 8 tubes up to 30mm diameter (e.g. 50ml centrifuge tubes) plus 24 tubes up to 15mm diameter (e.g. 1.5ml, 2.0ml, 15ml tubes) | PTR-60 | POA |
| 454-157 | Platform for 14 tubes up to 30mm diameter (e.g. 50ml centrifuge tubes) | PTR-60 | POA |