

Bryton Bridge

User's Manual

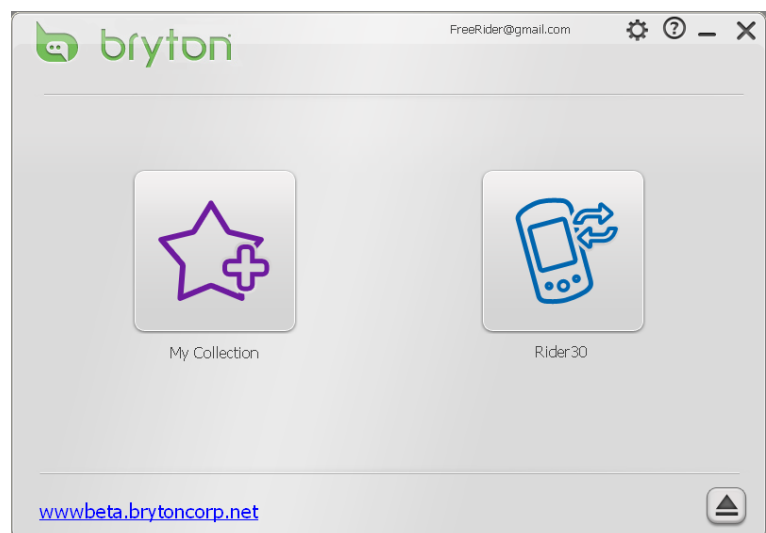


Table of Contents

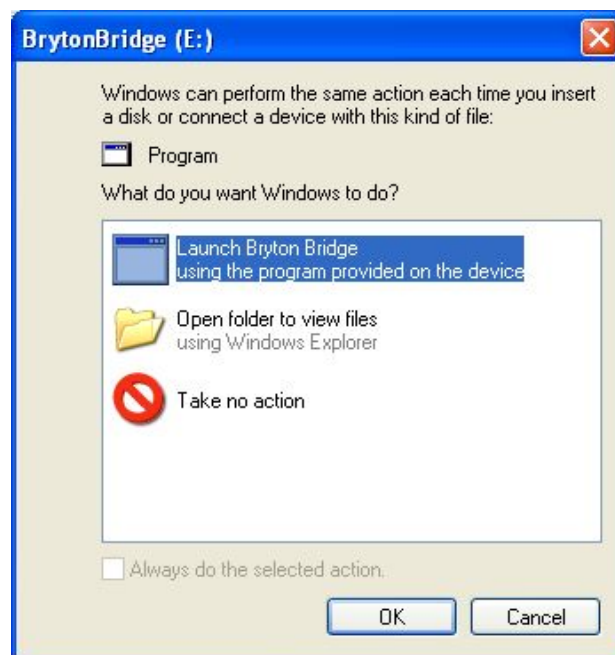
SOFTWARE OVERVIEW.....	3
1.1 INITIAL SETUP.....	3
1.2 REGISTER AN ACCOUNT	5
MANAGE COLLECTION	6
2.1 MANAGING YOUR COLLECTION ON YOUR RIDER 50	6
2.2 MANAGING YOUR COLLECTION ON YOUR RIDER 30	7
MANAGE MAPS	8
3.1 IMPORTING MAPS	8
3.2 DELETING MAPS.....	9
MANAGE DEVICE	11
4.1 UPDATING FIRMWARE	11
4.2 RESET TO FACTORY DEFAULTS.....	12
4.3 SET HOME ALTITUDE (ONLY FOR RIDER 50)	12
4.4 CHANGE OSD LANGUAGE (ONLY FOR RIDER 30)	13
SOFTWARE SETTINGS	14
5.1 CHANGING THE SETTINGS	14
5.2 UPDATING SOFTWARE	15

SOFTWARE OVERVIEW

Bryton Bridge is a software that helps you to back up and restore your Rider 50/Rider 30 Series data, upload your track data to our community website at www.brytonsport.com. You can also import map data from Map DVD that came with the original product packaging (only for Rider 50).

1.1 Initial Setup

- Step 1 Connect your Rider 50/Rider 30 to your computer by using the USB cable.
- Step 2 For Rider 30, insert the Bryton CD into your computer disc drive or you can download the Bryton Bridge application at <http://bb.brytonsport.com>. For Rider 50, the installation window will automatically show up when you connect your Rider 50 to your computer.
- Step 3 Install the Bryton Bridge application.
 - a. A pop-up installation window appears on the screen.



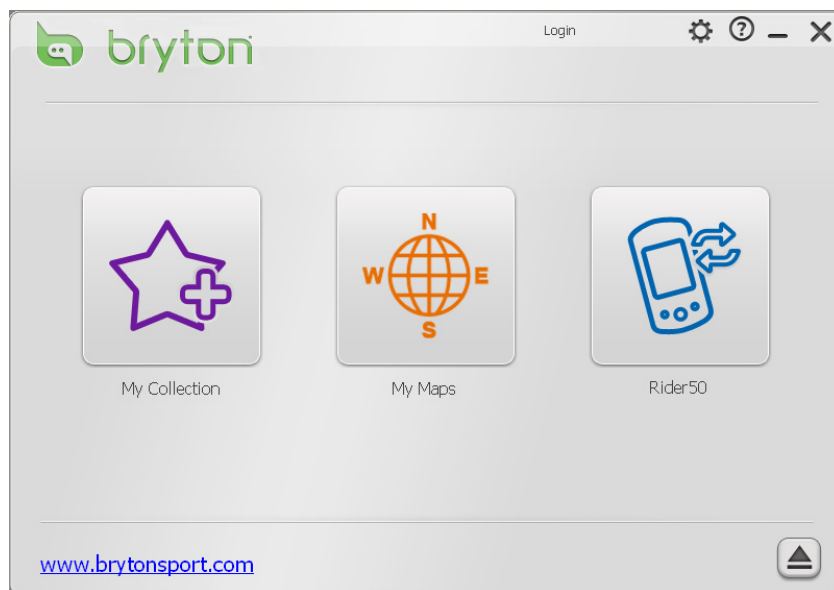
Click **Launch Bryton Bridge** and follow the on-screen instructions to install Bryton Bridge.

SOFTWARE OVERVIEW


- b. Otherwise, go to **My Computer** > **Removable Disk** > double-click **setup.exe** and follow the on-screen instructions to install the software.

Name	Size	Type
bb		File Folder
autorun.inf	1 KB	Setup Information
setup.exe	9,707 KB	Application

Step 4 Follow the on-screen instructions to transfer data to your computer.



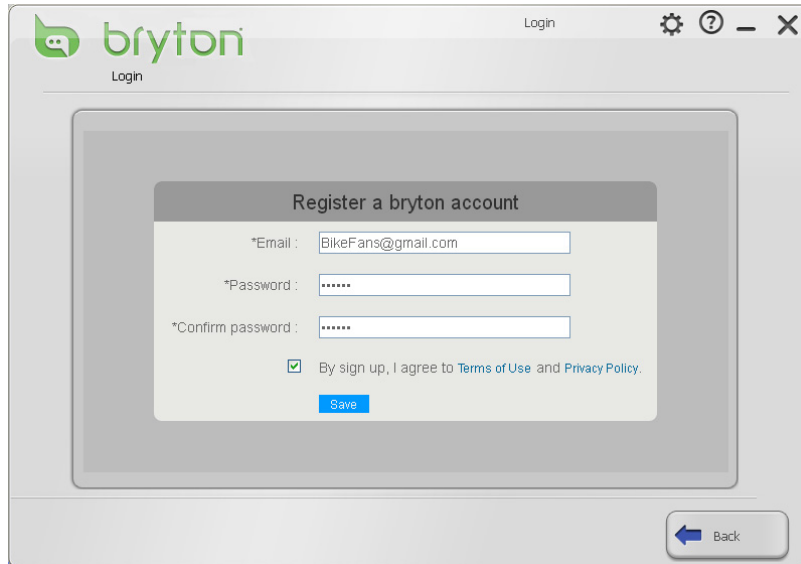
Note:

- After you have installed Bryton Bridge, it will automatically launch when the device is connected to the computer. If the software does not automatically launch, double-click Bryton Bridge shortcut icon  on the computer desktop. (If the "Launch Bryton Bridge" window appears on the screen, just close the window. No need to reinstall the application.)
- For Rider 50 Series, there are two additional ways to access the Bryton Bridge application installation file:
 - a. Insert the Bryton DVD into your computer disc drive.
 - b. Download the Bryton Bridge application at <http://bb.brytonsport.com>.

1.2 Register an Account

When you first launch Bryton Bridge, you need to register an account, so that we can provide you timely support to you after your purchase.

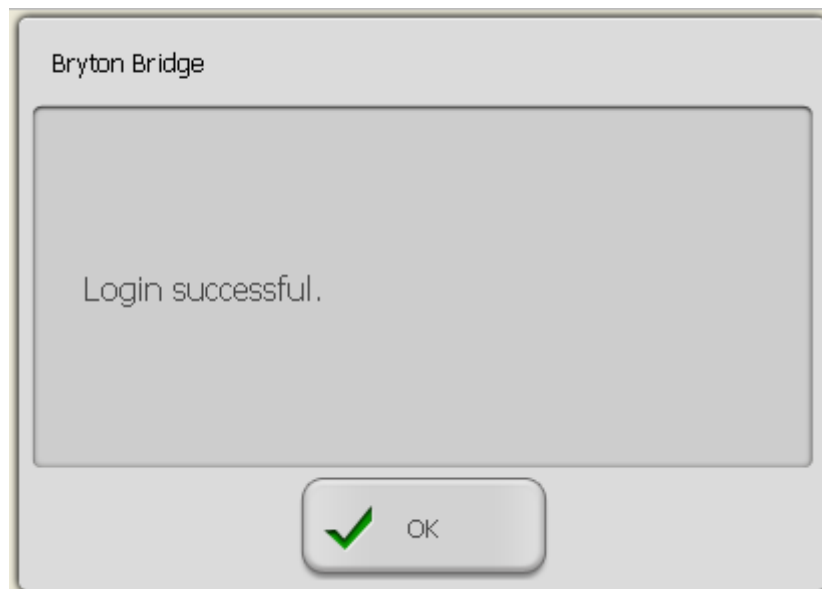
Step 1 Enter your email address and password.



The screenshot shows a web browser window titled "Login" with the Bryton logo in the top left. The main content area displays a "Register a bryton account" form. The form includes three input fields: "*Email:" with the value "BikeFans@gmail.com", "*Password:" with masked characters, and "*Confirm password:" with masked characters. Below the fields is a checkbox labeled "By sign up, I agree to [Terms of Use](#) and [Privacy Policy](#)." which is checked. A blue "Save" button is positioned below the checkbox. At the bottom right of the form area, there is a "Back" button with a left-pointing arrow.

Step 2 Check "By sign up, I agree to Terms of Use and Privacy Policy", and then click **Save**.

Step 3 A "Login successful" message appears on the screen. Click **OK**.



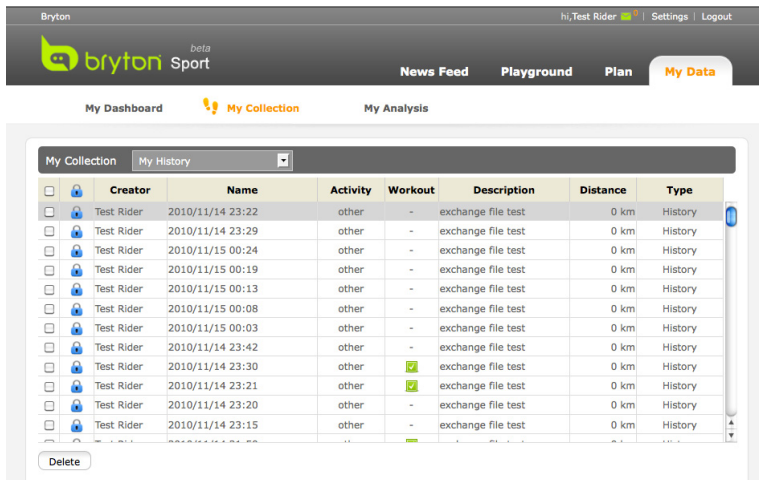
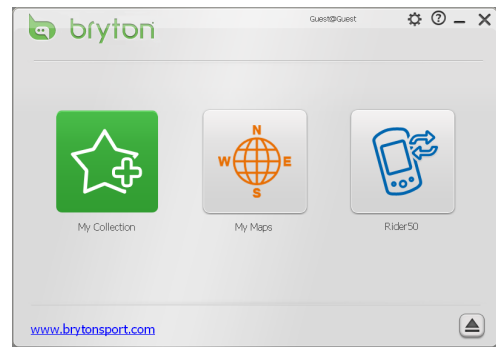
MANAGE COLLECTION

My Collection where the history and planned trip data that you have uploaded on our community website and you plan to download to your Rider 50/Rider 30 later on.

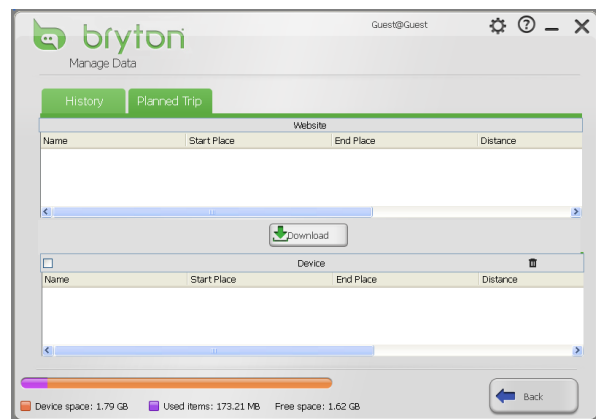
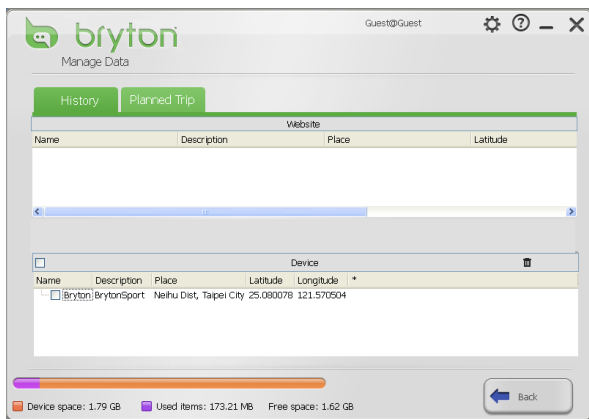
Click **My Collection**.

Note:

Once you click **My Collection**, all of your history and planned trip will be uploaded to automatically to **My data** at Brytonsport.com.



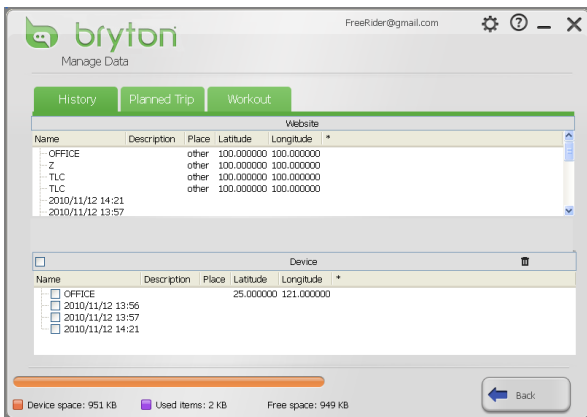
2.1 Managing Your Collection on Your Rider 50



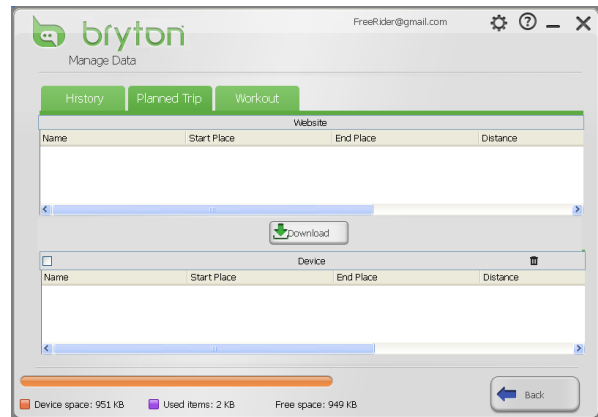
- a. Select **History** tab to view your track list.
 - To delete the desired history data from the list, select a data and click icon.

- b. Select **Planned Trip** tab to view your planned trip list.
 - To add new planned trip to your Rider 50, select a route from the website list and click **Download**.
 - To delete the desired data from the list, select a route and click icon.

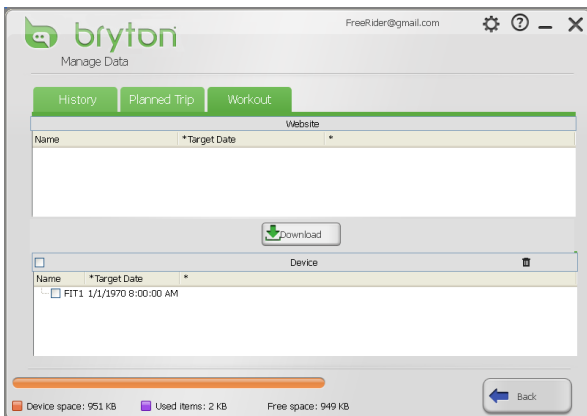
2.2 Managing Your Collection on Your Rider 30



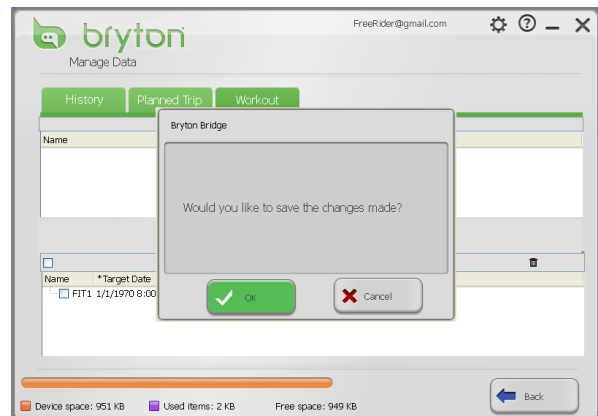
- a. Select **History** tab to view your track list.
- To delete the desired history data on your Rider 30, select a data on the device list and click icon.



- b. Select **Planned Trip** tab to view your planned trip list.
- To add new planned trip to your Rider 30, select a route on the website list and click **Download**.
 - To delete the desired data on your Rider 30, select a route on the device list and click icon.



- c. Select **Workout** tab to view your workout list.
- To add new workout to your Rider 30, select a workout on the website list and click **Download**.
 - To delete the desired data on your Rider 30, select a workout on the device list and click icon.



- d. When finished, click **Back** and the above message appears on the screen. To save the changes, click **OK**.

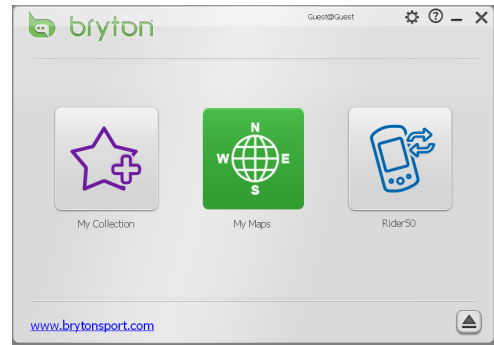
MANAGE MAPS

With **My Maps**, you can import maps (that are bundled in the DVD) to your Rider 50 or the memory card. You can also delete maps from the device or memory card.

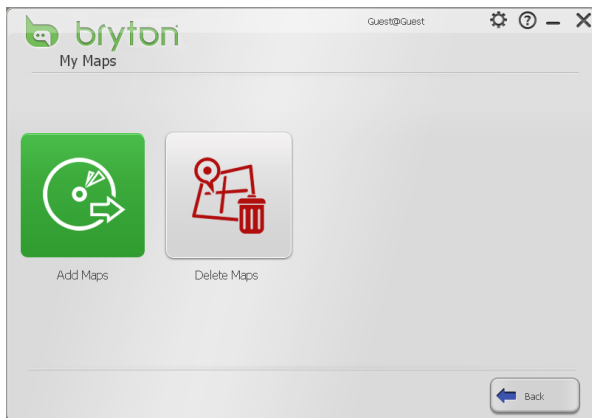
Click **My Maps**.

Note:

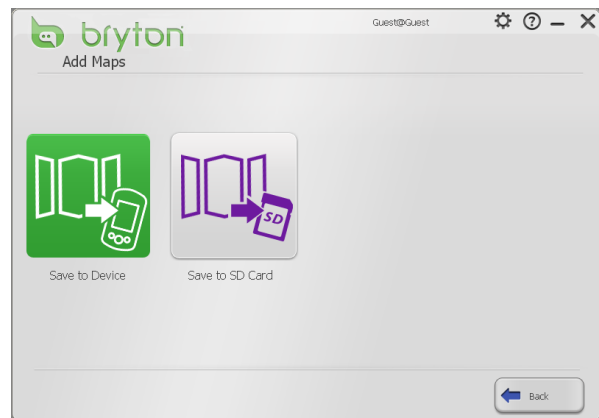
This feature is only available for Rider 50.



3.1 Importing Maps



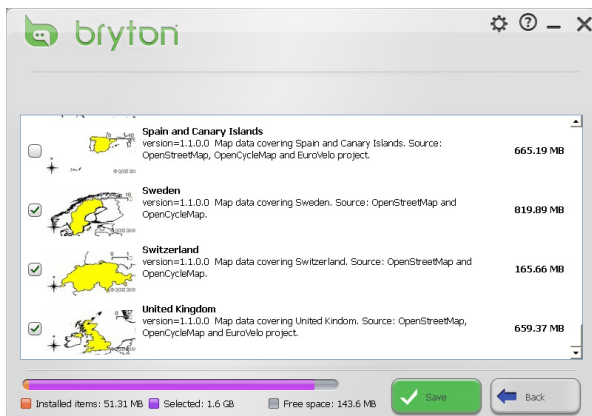
a. Insert the Map DVD into your computer disc drive. Click **Add Maps**.



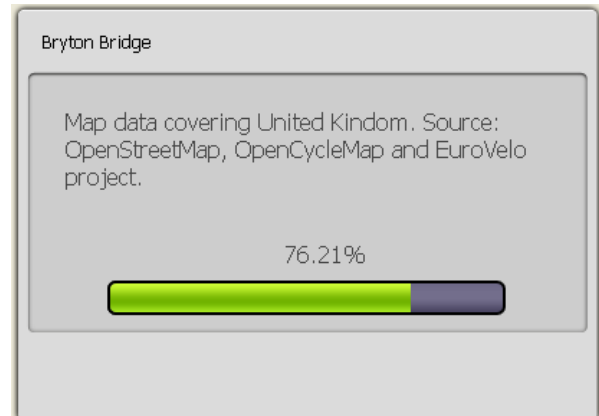
b. To save the maps to your device, click **Save to Device**.
 ▪ To save the maps to the memory card, click **Save to SD Card**, select the SD card folder and click **OK** to continue.

Note:

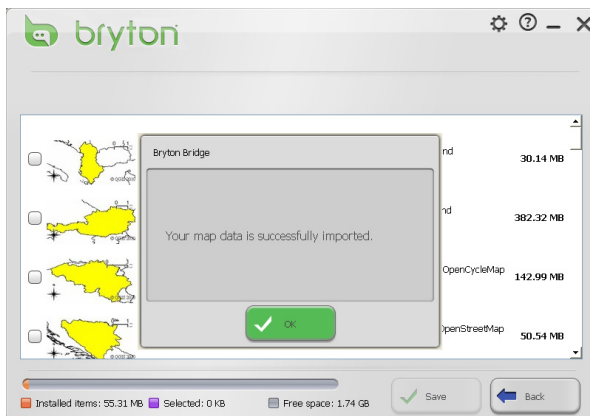
Be sure that you have a microSD card into your Rider 50.



c. Select the desired map(s), and click **Save**.

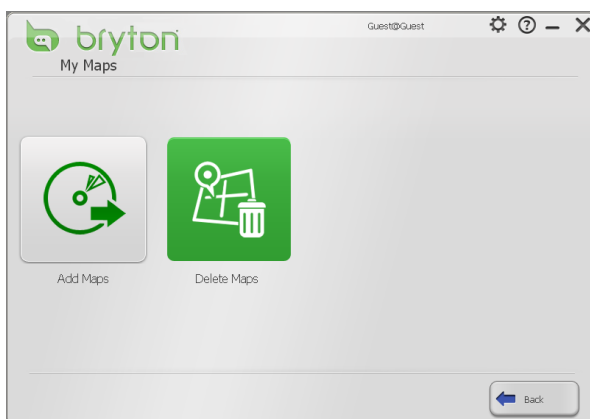


d. Wait until the map importing process is completed.



- e. After the map is successfully imported, a message appears on the screen. Click **OK**.

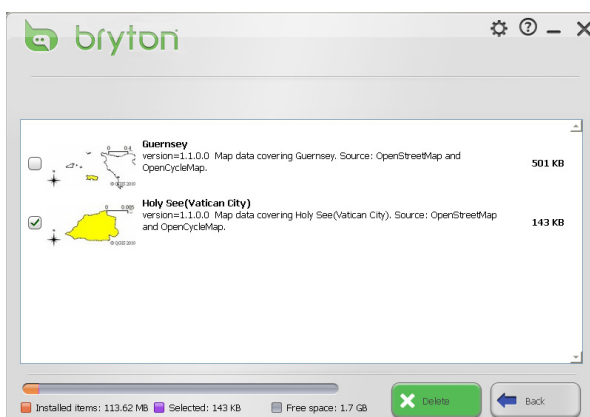
3.2 Deleting Maps



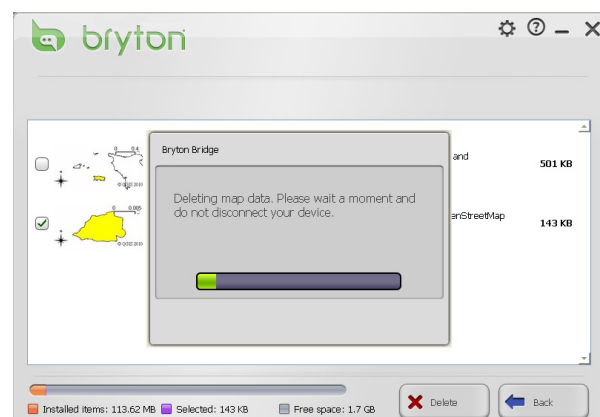
- a. Click **Delete Maps**.



- b. To delete the maps that you have stored on your device, click **Delete Map on Device**.
- To delete the maps that you have stored in the memory card, click **Delete Map on SD**, select the SD card folder and click **OK** to continue.



- c. Select the desired map that you

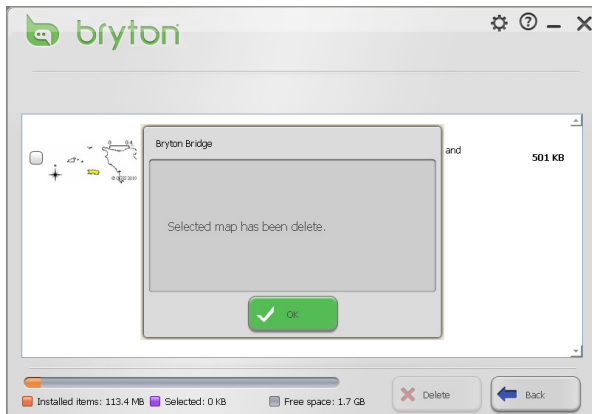


- d. Wait until the map deleting

MANAGE MAPS

want to delete, and click **Delete** to delete the selected map(s).

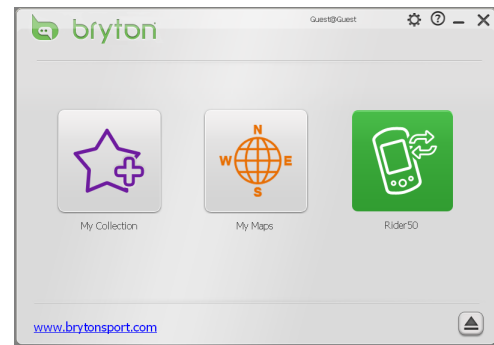
process is completed.



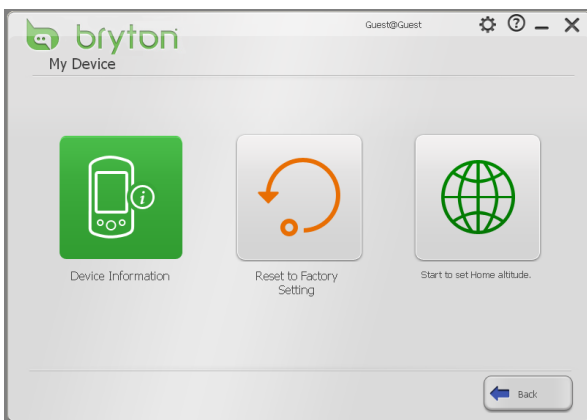
- e. After the map is successfully deleted, a message appears on the screen. Click **OK**.

MANAGE DEVICE

With **Rider 50/Rider 30**, you can view your Rider 50/Rider 30 information, update your device with the latest firmware version, reset your device to the factory default settings, set the home altitude (only for Rider 50), and change the OSD language (only for Rider 30). Click **Rider 50/Rider 30**.



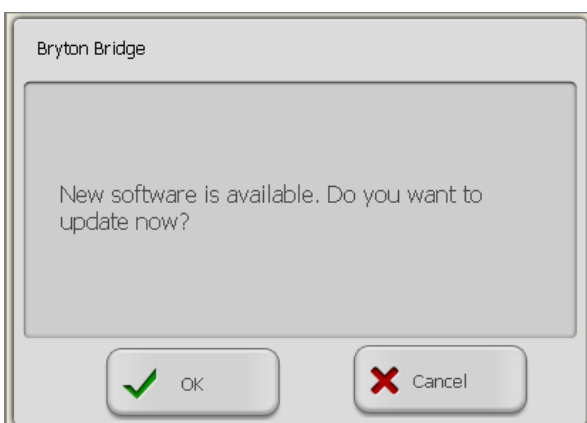
4.1 Updating Firmware



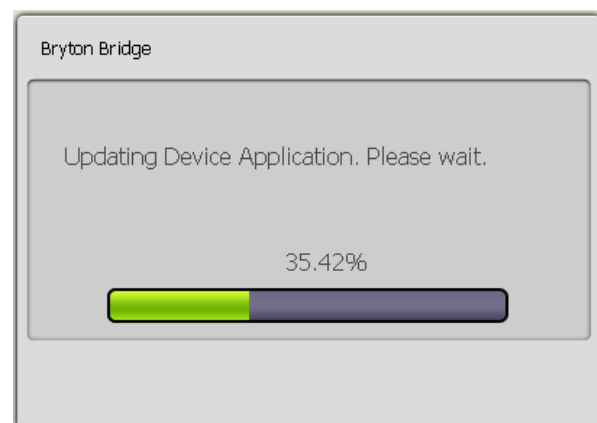
a. Click **Device Information**.



b. The device information is displayed on the screen. To update your device firmware, click **Update** to continue.



c. If there is a new firmware version, the above message appears on the screen. Click **OK** to start updating the latest firmware version.

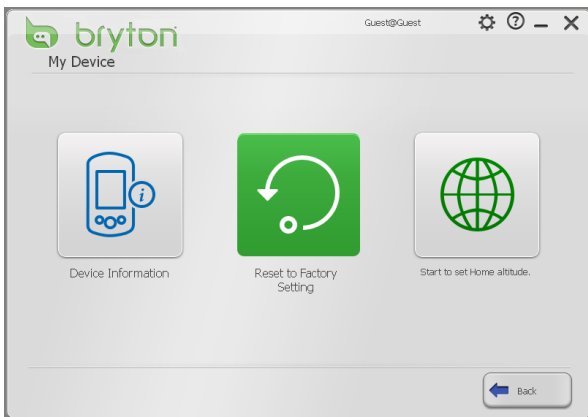


d. Wait until the process is completed.

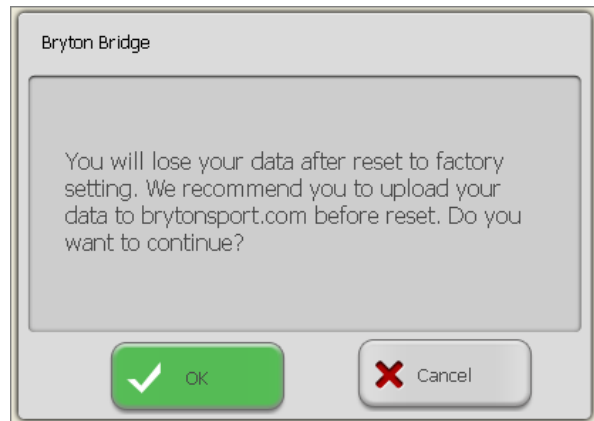
Note:

Do not unplug the USB cable or turn off your device during the firmware update process is in progress.

4.2 Reset to Factory Defaults

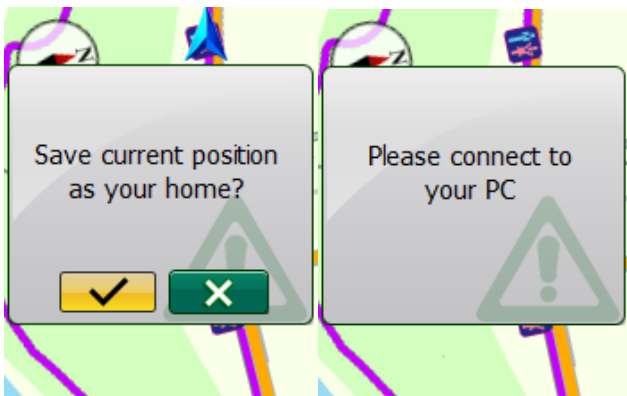


a. Click **Reset to Factory Setting**.

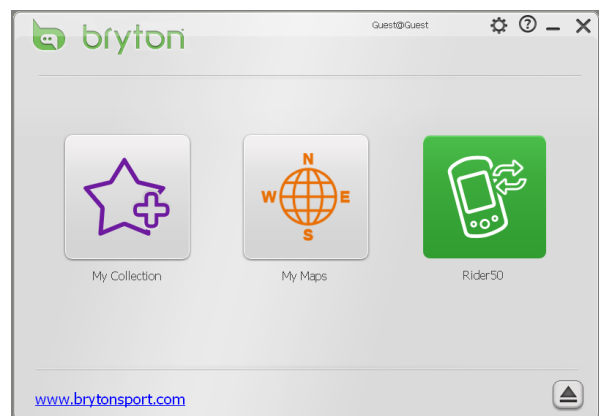


b. Click **OK** to reset the device to the factory default settings.

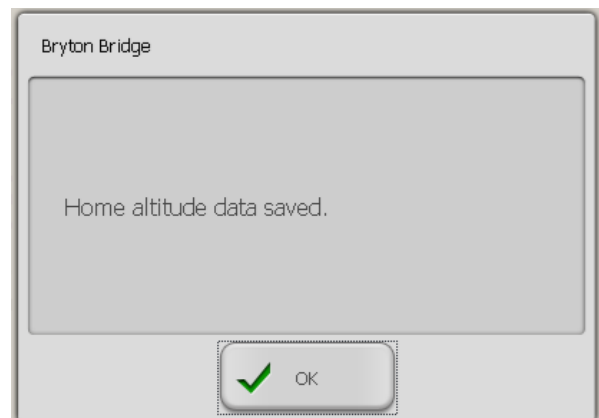
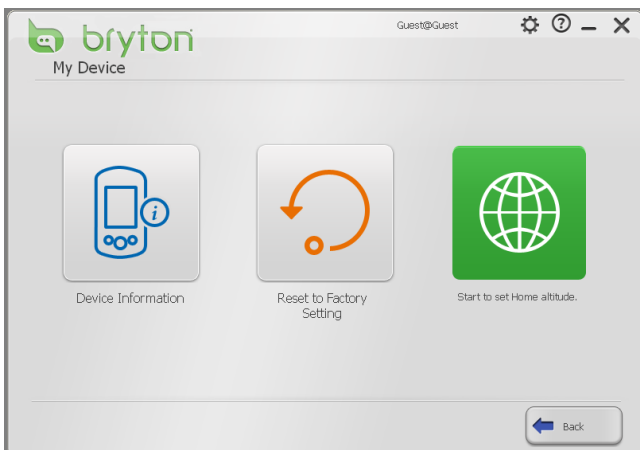
4.3 Set Home Altitude (only for Rider 50)



a. Take your Rider 50 to outside of your house, a clear view of the sky. It will automatically search for satellite signals. When GPS is fixed, press and hold the **Menu** button.



b. Connect your Rider 50 to the computer using the USB cable. The Bryton Bridge will automatically launch. Click **Rider 50**.

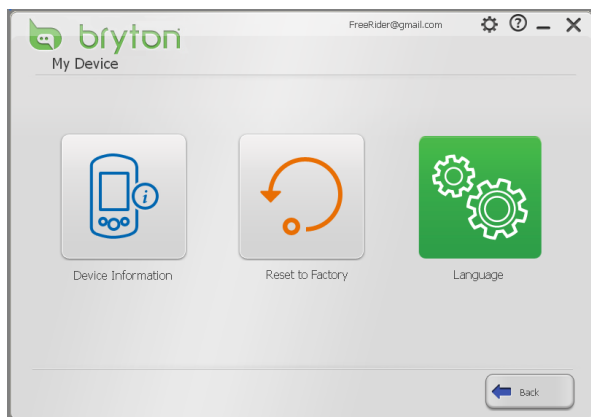


- c. To set home altitude, click **Start to set Home altitude**.
- d. The “Home altitude data saved” message appears on the screen. Click **OK** to continue.

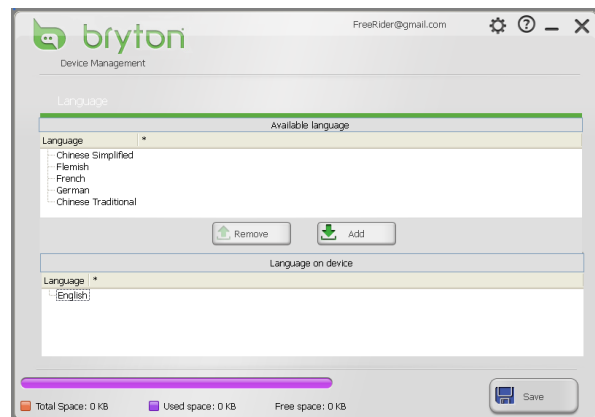
Note:

- To calibrate home altitude, take your Rider 50 to the same location where you set as home altitude and receive the satellite signals, and press and hold the **Menu** button.
- To ensure the data is accurate, it is highly recommended that you adjust the barometer every time before using your Rider 50.

4.4 Change OSD Language (only for Rider 30)



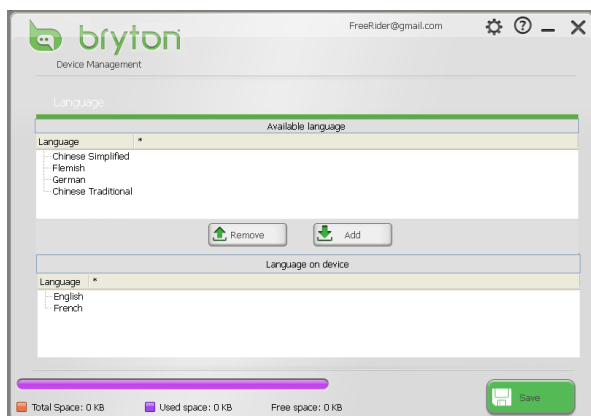
- a. Click **Language**.



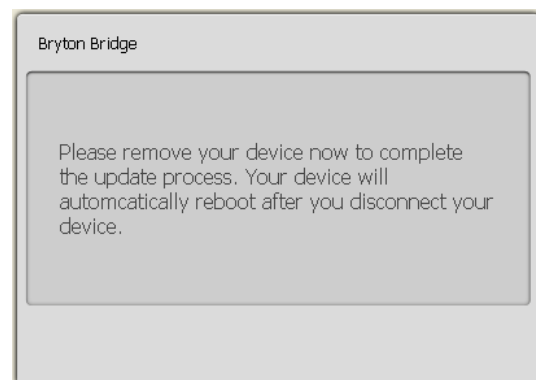
- b. To add a new OSD language to your Rider 30, select the desired language on the available language list and click **Add**.

Note:

Rider 30 can only store two OSD languages at a time. You have to remove one OSD language from the device before replacing it with the new OSD language.



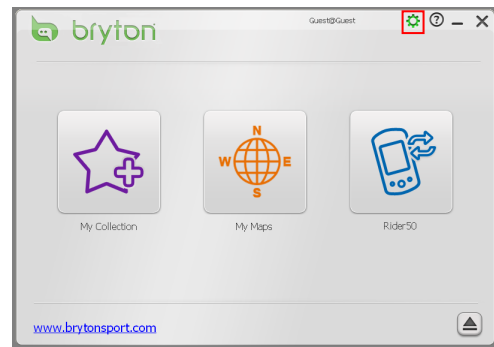
- c. To remove the desired OSD language on your Rider 30, select the language on device list and click **Remove**.



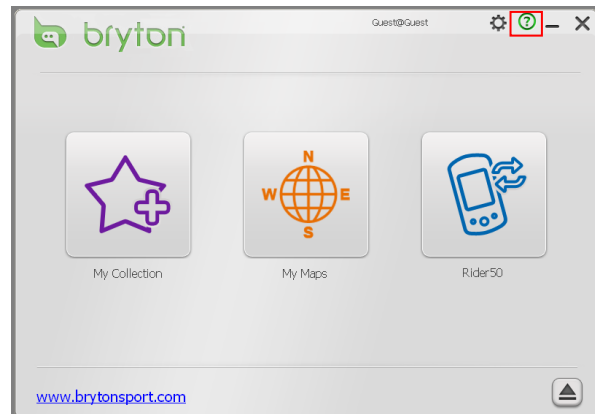
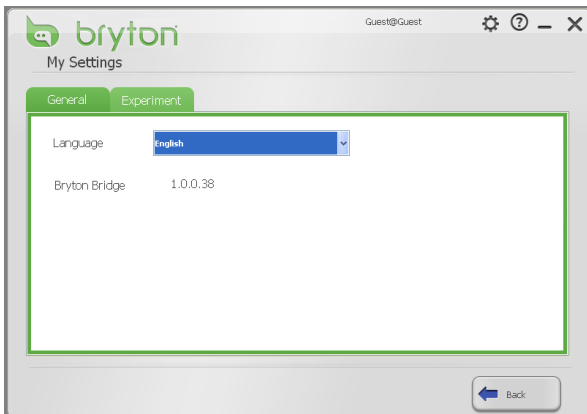
- d. When finished, click **Save** and the above message appears on the screen. Remove the USB cable to complete the OSD language update process.

SOFTWARE SETTINGS

You can change the Bryton Bridge settings by clicking "Setting" icon on the top right of software.



5.1 Changing the Settings



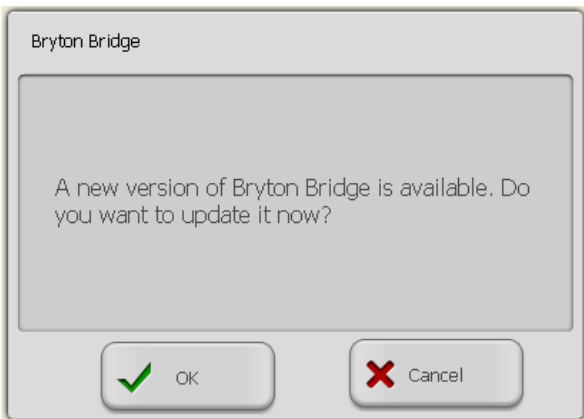
a. Select **General** tab to view the software information. To change the language, select the desired language from the pull-down menu.

b. If you need further assistance on using the Bryton Bridge software, click **Help** icon.

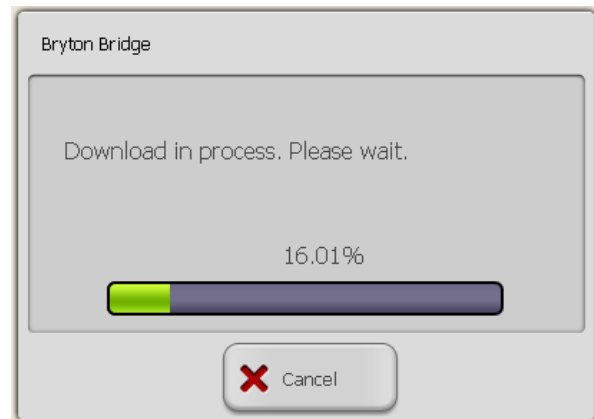
Note:

Before you unplug the USB cable, click  to eject ("Safely Remove") the device.

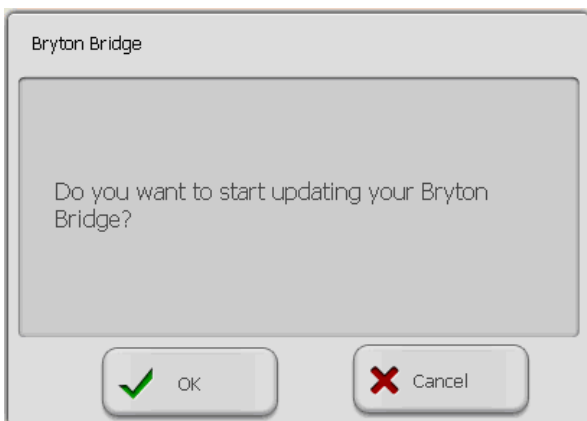
5.2 Updating Software



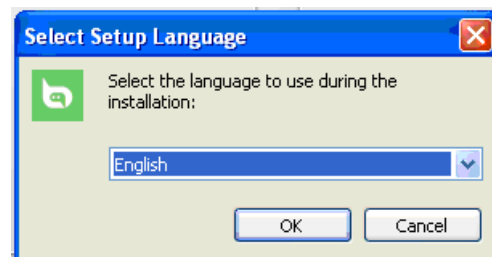
- a. If there is a new software version, the above message appears on the screen. Click **OK** to start updating the Bryton Bridge software.



- b. Wait until the system finishes downloading the new software.



- c. To start updating the software, click **OK**.



- d. Select the language that you want to use during the installation, and click **OK**. Follow the on-screen instructions to install the software.