

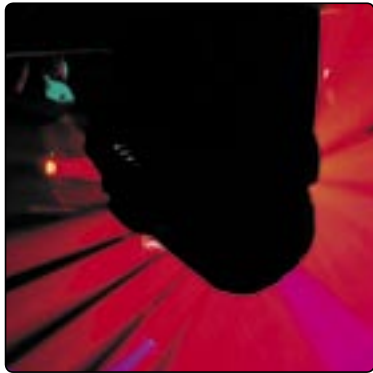


Martin



Built from the ground up for greater performance and featuring an elegant streamlined look, Martin Professional's 250-watt moving head series includes the high performance MAC 250 Wash and two profile spot versions; the MAC 250 Krypton and the full-featured MAC 250 Entour.

Extremely flexible lighting tools, the MAC 250 Series successfully combines high light output with compact size, ideal tools for club installation, retail and leisure, studio, special events and touring markets.



The logo features the text "MAC series" in a bold, sans-serif font. "MAC" is significantly larger and more prominent than "series". The text is centered within a white circular outline. This circle is part of a larger white geometric design consisting of a square-like shape with rounded corners. Four white lines extend from the corners of this shape towards the center, each ending in a small arrowhead pointing towards the circle. The entire graphic is set against a dark, textured background, possibly a piece of fabric or a leather-like material.

MAC
series

Contents:

Intro	2
MAC 250 Entour	4-5
MAC 250 Krypton	6-7
MAC 250 Wash	8-9
MAC 250 Series	10-11
Specifications	12



The MAC 250 Entour features an enhanced optical system that produces unsurpassed quality imaging which, together with the added array of graphical effects, an achromatic lens system and additional gobo wheel make the Entour a powerful lighting tool.

Also included is a specially designed dimming system for exceptionally smooth and even dimming. By achieving new standards in light output and image quality, the Entour is ideal for environments where powerful effects are required like stage, studio and event applications, permanent installations and much more.





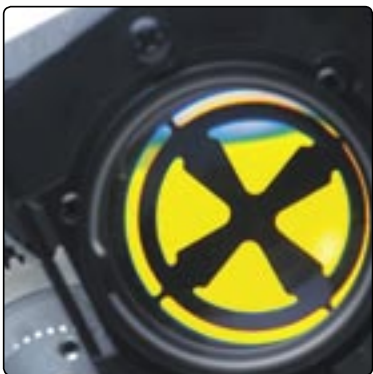
Superior optics

In the MAC 250 Entour, a 17-degree achromatic lens system produces razor sharp picture quality of any projected image. A narrow angle 14-degree lens is also included with the Entour for longer projection throws.



Replaceable gobos

The Entour houses a rotating and indexing gobo wheel with seven slots plus open equipped with a combination of metal, dichroic glass and structured glass gobos. In addition the Entour features a fixed gobo wheel with 10 replaceable metal gobos giving lighting professionals an even wider range of graphical effects possibilities. Also included with the Entour is a series of beam reduction gobos for easy adjustment of beam size.



Enhanced dimming system

The Entour features an enhanced high resolution dimming system similar to the MAC 2000 that provides exceptionally smooth and even dimming.



Easy handling

The Entour includes in it's additional features: an easily accessible, multi-position tilt lock which eases handling when moved on a frequent basis, and a convenient, low noise operation mode is included for noise sensitive studio environments.



Prism and Focus

A bi-directional, 3-facet prism is smooth and rotates at variable speeds, adding unique effects to gobo projection. The prism can also be replaced giving lighting professionals an added customizable feature. The Entour is also equipped with a remote focus for additional effect possibilities, as well as various preset patterns for valuable programming timesavings.





Combined Dimmer/Shutter

Variable and smooth dimming is possible via a combined dimmer/shutter.

Two user selectable dimmer curves are available, linear or simulated tungsten. Extremely fast strobe effects are also possible with variable speeds of up to 20Hz.



New Gobo Designs

For completely fresh graphical looks, a newly designed rotating and indexing gobo wheel offers a new selection of replaceable metal and dichroic gobos. The 16-bit precision gobo wheel houses 7 slot plus open, all of which are fully indexing and have variable speed rotation.



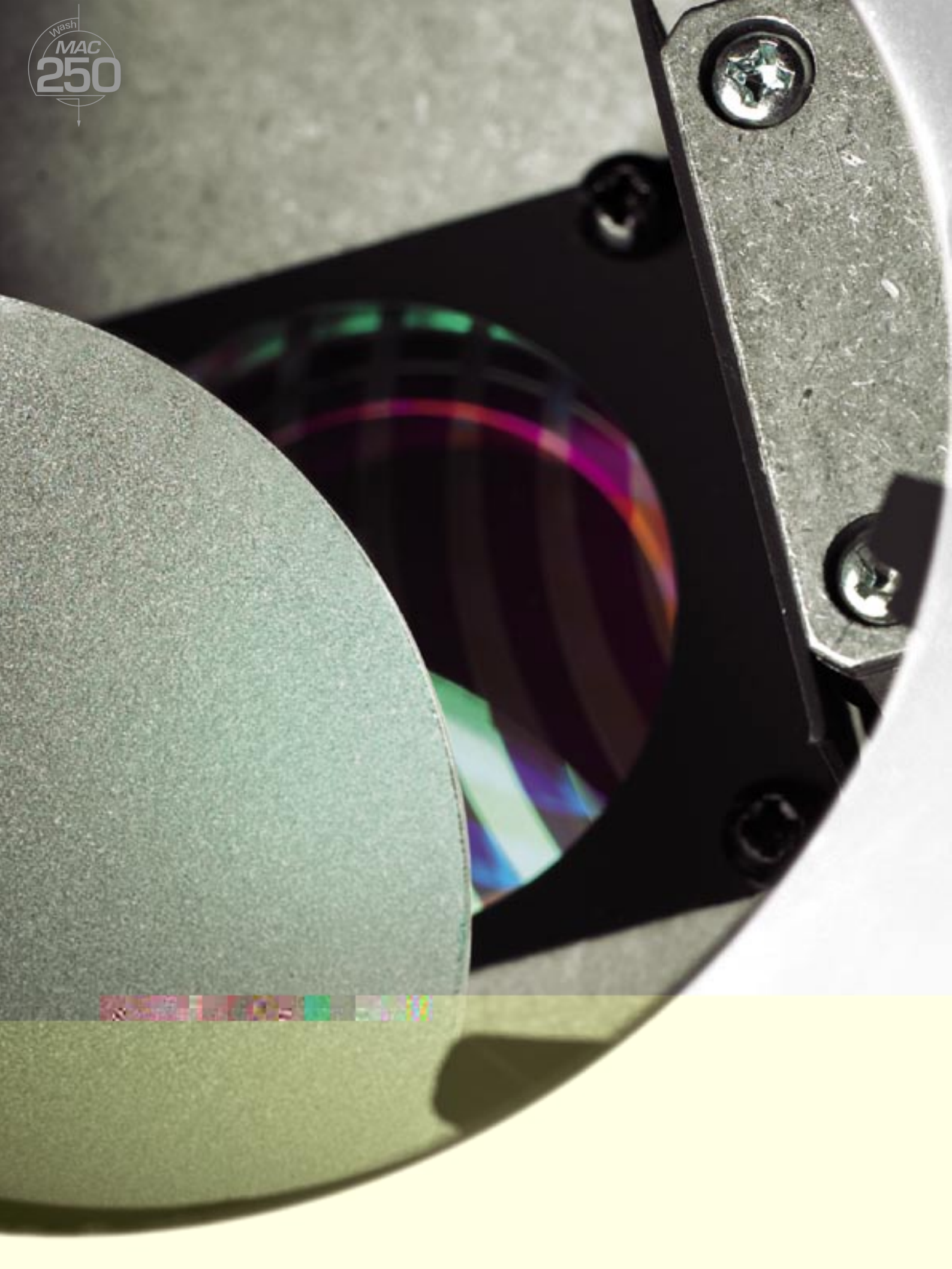
Saturated Color

Rich color shades are provided from a motorized color wheel housing 12 dichroic color filters plus open with split position possibilities. All color filters are replaceable, and with a wide variety of optional colors available, designers can customize the color palette to fit their needs.



Prism and focus

A bi-directional, 3-facet prism rotates smoothly at variable speeds, adding unique effects to gobo projection. The prism can also be replaced giving lighting professionals an added customizable feature. The MAC 250 Krypton is also equipped with a remote focus, allowing both sharp and soft images to be projected. Various preset macros are also included with the fixture to save valuable programming time.





Superior Optics

Using the industry standard long-life, Philips MSD 250/2 discharge lamp and the standard Fresnel lens, the MAC 250 Wash splashes out light onto a wide area (18° - 35°). A simple change of the front lens makes wide beam angles possible with the 59° diffuser lens giving an angle range of 59° - 67°.



CMY Mixing System & Color Wheel

A CMY (cyan, magenta, yellow) color mixing system provides virtually unlimited color choices while a separate 6 slot plus open color wheel complements with color correction and other filters. All color slots are replaceable and split colors are possible.



Zoom Effect

Zoom effect possibilities are provided by a variable frost filter.

Smooth continuous transition from standard wash to flood creates the same zoom possibilities as conventional 1 and 2KW lights

MAC 250 Wash

The new MAC 250 Wash is equipped with remarkably efficient reflector technology for greater output, extraordinarily fast and quiet movement, a variable frost filter for zoom effect and a CMY color mixing system with a complementing color wheel.

Sporting the award winning traits of the MAC family, the MAC 250 Wash features user friendly modularity and the sleek exterior design of the new 250 range.



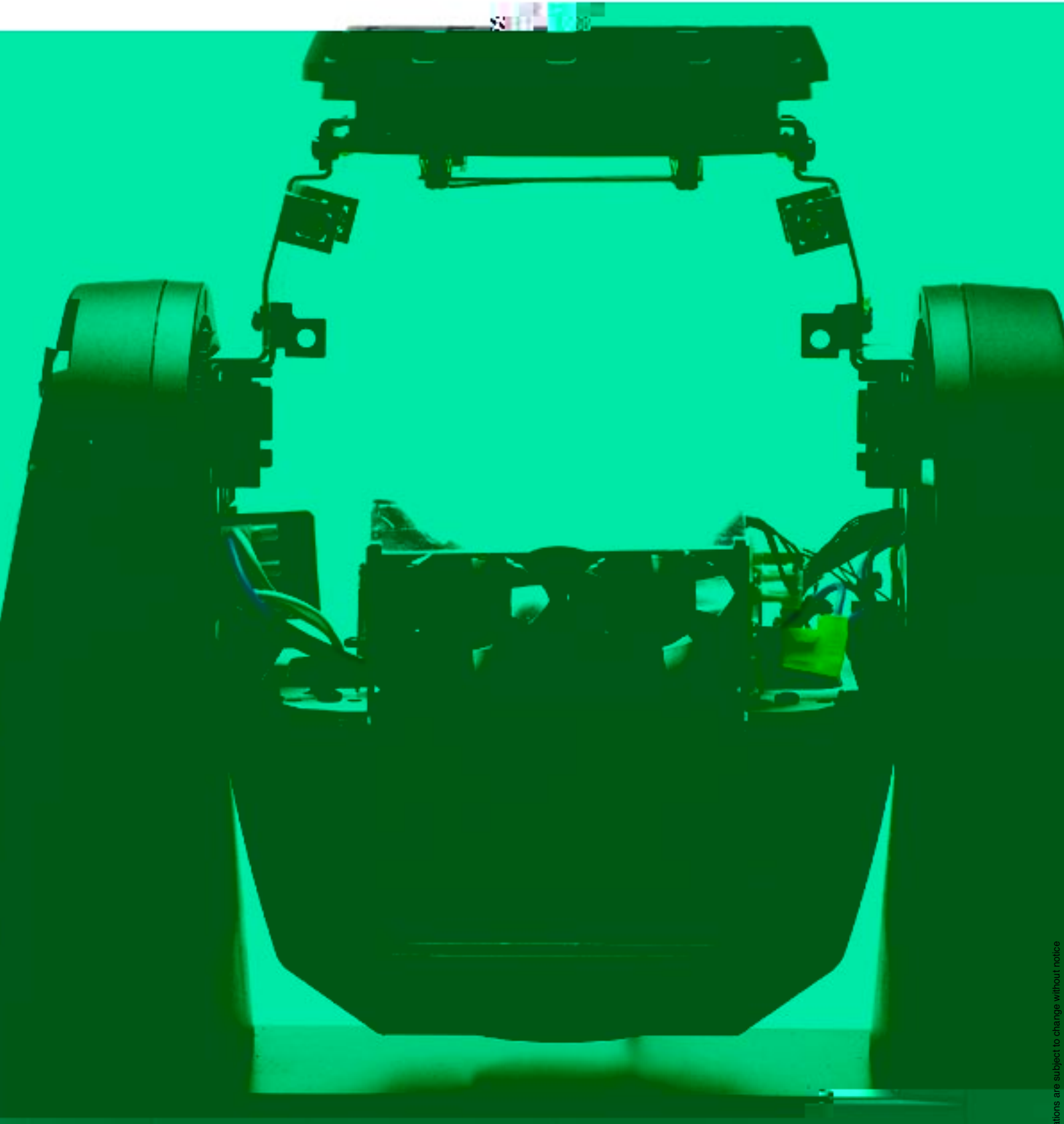
Silent Running

Using the latest fan technology the MAC 250 Wash is an exceptionally quiet fixture. The head and base contain temperature sensors to ensure that fan speeds are kept to a minimum; bringing noise levels right down to suit theater and TV studio applications.



Enhanced Dimming System

The MAC 250 Wash features an enhanced high resolution dimming system similar to the MAC 2000 that provides exceptionally smooth and even dimming.





Glass Reflector

An extremely effective, multi-layered, dichroic reflector gives the MAC 250 Series an exceptional output - surpassing its competitive peers using condenser based optical systems.



Martin's fastest moving heads ever

The latest in pan and tilt motor technology produces smooth, quiet and ultra-rapid movement, making the new MAC 250 fixtures the fastest moving heads that Martin has ever produced - and faster than competitive fixtures. Movement range is 540° of pan x 257° of tilt. If knocked out of position, a high-speed, automatic reset function realigns the fixture in seconds.



Switchable power

A convenient, easily switchable power supply covers worldwide voltages and frequencies.



Flightcase option

For complete protection and convenient transport, the MAC 250 series is available in durable, double fixture flightcases. Made from top quality materials, the flight case comes in a tough, water repellent 9mm thick ply, with aluminum edge protection, steel corners, resilient roller castors and convenient spring-back, steel carrying handles for easy grip and handling. Practical windows are placed in the lid of the flight cases to allow easy bar code scanning of fixtures when moving them in and out of facilities.



Communications

All MAC 250's are DMX-512 controllable, equipped with 3 and 5 pin XLR IN/OUT connectors for data, and prepared for future new standards such as ACN or Ethernet based protocol. The new series also includes a new light sensitive yellow LED display for easy fixture programming, and customized settings allow each user to cater the fixture to their liking. The display provides easy to use maintenance menus and concise error messages.



- Un
- cr
- Re
- or