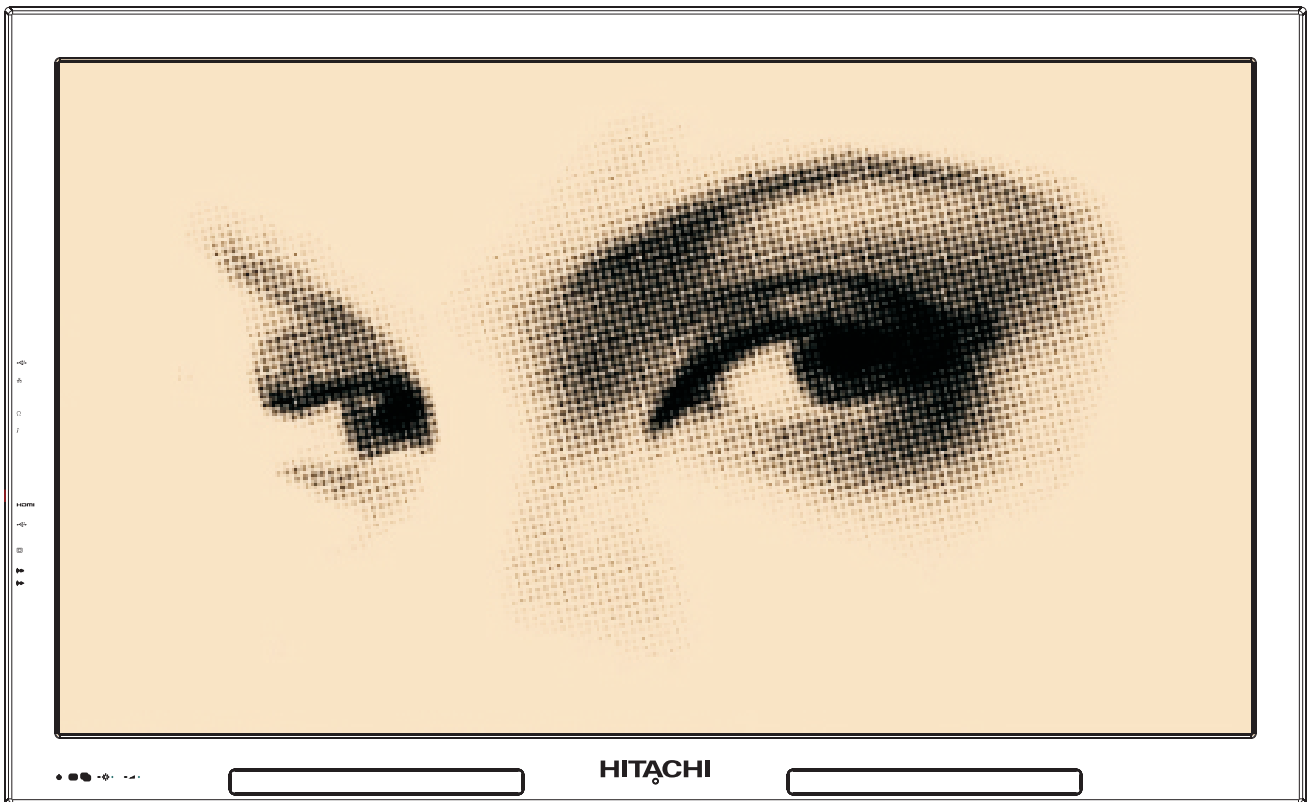


**HITACHI**  
Inspire the Next

**65" INTERACTIVE MONITOR**  
**HIT-FHD6514 Touch**  
**HIT-FHD6516 Touch**



**Full HD**  
1920x1080



## **Packing List**

- 1x65" Interactive Monitor
- 1x65" Interactive Monitor Wall Mount
- Accessories Box
  - User Manual
  - 1xStylus
  - 1x1500mm HDMI Cable
  - 1xRemote Control
  - 1xDriver DVD
  - 1xBattery for Remote Control

**Table of Contents**

**CAUTION** ..... 3

**System Features** ..... 4

**INTRODUCTION** ..... 5

**CHAPTER 1** ..... 8

**CHAPTER 2** ..... 9

**USING THE AND ITS FUNCTIONS** ..... 9

    RS232 Command Table .....10

    Source Switching Description ..... 12

    Source Switching with Keypad Description ..... 12

    Source Switching with remote control Description .....13

    4.1.1. Installation instructions ..... 15

    4.1.2. Installation steps ..... 15

**CALIBRATING THE TOUCH SCREEN** ..... 16

    Using External Sources with INTERACTIVE MONITOR ..... 17

**POWER SPECIFICATIONS** ..... 18

**CHAPTER 3** ..... 18

**USING YOUR INTERACTIVE MONITOR MORE EFFECTIVELY** ..... 18

**CHAPTER 4** ..... 19

**TROUBLESHOOTING** ..... 19

**FREQUENTLY ASKED QUESTIONS** ..... 19

**CHAPTER 5** ..... 20

**ASSEMBLY INSTRUCTION FOR INTERACTIVE MONITOR WALL MOUNT** ..... 20



### **NOTE**

Depending on the 's model you have bought, the appearance of your Interactive Monitor may not be the same as the one displayed in this manual.



## **CAUTION**



Do not leave a static image displayed for prolonged period of time. If a static image is displayed continuously for a long period of time, that image may cause image sticking on the display. This condition is not permanent, but may require a considerable amount of operational display time to dissipate, depending upon the degree of image stick. 120 minutes of continuous motion display will eliminate most image sticking effects at normal room temperature (not lower than 10 C).

As the nature of the TFT technology, you may see some amount of bright, dark, red, green and blue dots and sparklings on the screen, those do not affect the performance of the computer and are not accepted as a defect.



### **Warning**

This is a class A . In a domestic environment this may cause radio interference in which case the user may be required to take adequate measures.

## **System Features**

### **Panel and Resolution**

65" LED panel  
•1920x1080 resolution

### **Touch Screen**

65" touch screen with 4 points HIT-FHD6514 Touch and 6 points, HIT-FHD6516 multi-touch feature  
IR Technology

### **Audio**

High Definition Audio  
Built-in speakers (4 x 5W)  
External headphones output and external microphone input

### **Input / Output Ports**

1 x B-Type USB 2.0 port (For using the touchscreen with external PC) (max. 500mA)  
2 x HDMI port  
1 x VGA port  
1 x Audio input port  
1 x Audio output port  
1 x RS232 port

### **Remote Controller**

User friendly remote controller

### **Power**

220V~50Hz,1000mA

## **INTRODUCTION**

This instruction manual is intended to help you to get the best out of " Interactive Monitor "

**Chapter 1** Introduction to your Interactive Monitor

**Chapter 2** Using your Interactive Monitor. Instructions for using the and its functions.

**Chapter 3** Power management. Information about power management.

**Chapter 4** Addition of other devices to your Interactive Monitor.

**Chapter 5** Using your Interactive Monitor more efficiently.

**Chapter 6** Troubleshooting.

## **Signs used in this manual**

Some words and phrases are written in a different format to get your attention.



**Note:** It is being used to put emphasis on useful information and critical points regarding the .



### **Important!**

Important instructions are to be read carefully in order to prevent any damage to yourself, stored data and computer parts.

## **SAFETY PRECAUTIONS**

Please read the following recommended safety precautions carefully for your safety.

### **Power**

In order to disconnect your Interactive Monitor from all power supplies, unplug its AC cable from the power source.

- Always use the earthed AC cable provided.



### **Warning!**

The device you have bought must be plugged into the grounded electrical outlet. Please always use the grounded power cord provided. Manufacturer takes no responsibility for any damage that may occur as a result of ungrounded usage.



### **Warning!**

Disconnect your system from the power source in case of a long period of disuse.

## **Cleaning**



### **Important!**

Disconnect your from the power supply before cleaning it.

Do not clean your Interactive Monitor while it is switched on. Use a soft and damp cloth to clean the surface of . Do not use chemical cleaners to clean the screen. Do not apply cleanser directly on your computer.

## **Vent holes of your**

Vent holes on the cabin of your Interactive Monitor ensures stable performance of your computer without overheating. Do not block these openings in anyway.



### **Important!**

- Do not put any objects in the vent holes of your . This may cause fire or short circuit of the inner parts of your .

## **Temperature & Fire**

Do not expose your Interactive Monitor close to fire or high heat sources“

## **Lightning**

Before lightning or storms, disconnect your Interactive Monitor from the mains.

## **Servicing**

Please refer all servicing to qualified personnel. Do not remove the cover yourself as this may result in an electric shock.

**Do not jolt your Interactive Monitor**

**Ensure that it stays in a balanced stance on its position.**

**Do not throw or drop any object on your Interactive Monitor .**

**Do not keep your Interactive Monitor in a humid environment.**

**Do not keep your Interactive Monitor in an extremely cold environment.**

**Do not keep your Interactive Monitor in an extremely hot environment.**



## **CHAPTER 1:**

### **INTRODUCTION TO INTERACTIVE MONITOR**

Congratulations for buying our Interactive Monitor 65”.

We believe that you will be extremely satisfied with this product and hope that you will have pleasant and productive times with your Interactive Monitor .

Your Interactive Monitor provides a modern design that is compatible with most working conditions by combining a 65” TFT-LCD monitor, touch screen and a desktop computer.

Since all essential components that compose your Interactive Monitor are all together, it is easy to use and user-friendly. In addition to being compact, it also supports many functional features. Some of these are; RS232 connection compatible and high quality speakers.



**Note:** Information here is only for reference purposes, the Interactive Monitor you have bought may have some differences from the definitions and images in this manual.

### **Front view**



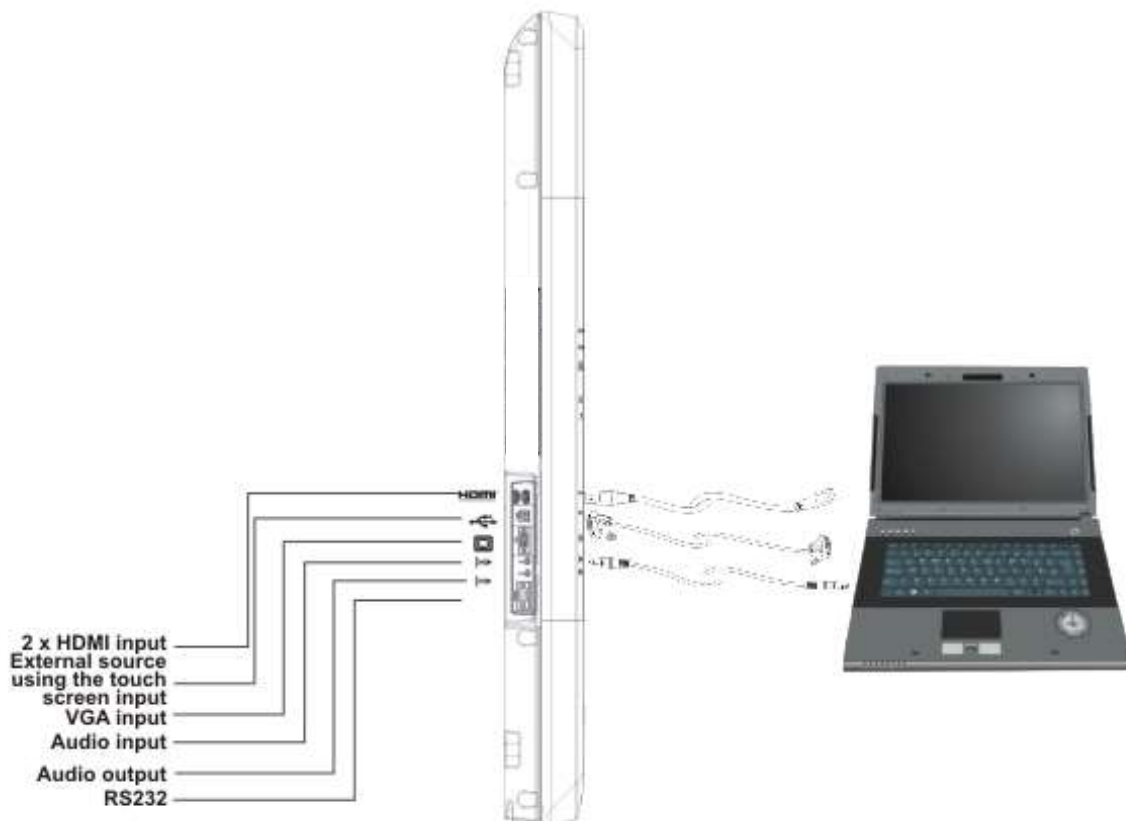
## CHAPTER 2:

USING AND ITS FUNCTIONS.

### Panel

<b>Panel type</b>	<b>TFT LCD</b>	
<b>Active area</b>	<b>1428.48 (H) x 803.52 (V)</b>	
<b>Visual angle</b>	<b>Horizontal</b>	<b>178°</b>
	<b>Vertical</b>	<b>178°</b>
<b>Max. brightness</b>	<b>360 cd/m2</b>	
<b>Max. contrast</b>	<b>4000:1</b>	
<b>Response time</b>	<b>5 ms G2G</b>	
<b>Max. resolution</b>	<b>1920 * 1080</b>	
<b>H - frequency</b>	<b>60 KHz ~ 73 KHz</b>	
<b>V - frequency</b>	<b>47Hz ~ 63Hz (typical: 60Hz)</b>	

### Usage of Touch Screen with External PC



If you want to use touch screen when you connect an external PC to your Interactive Monitor via VGA or HDMI inputs, you should connect the external PC to your Interactive Monitor with a USB-USB cable as shown above. Touch screen will be activated soon.

## RS232 Command Table

Function Name	Function Type	Command Data (HEX)								Additional Information				
OPS POWER	OFF	BE	EF	03	06	00	2A	D3	01	00	00	00		
	ON	BE	EF	03	06	00	BA	D2	01	00	00	00		
	GET	BE	EF	03	06	00	19	D3	02	00	00	00	1D 00 00: OFF	1D 00 01: ON
Source	OPS	BE	EF	03	06	00	FE	D2	01	00	00	20		
	HDMI1	BE	EF	03	06	00	0E	D2	01	00	00	20		
	HDMI2	BE	EF	03	06	00	0E	D2	01	00	00	20		
	VGA	BE	EF	03	06	00	5E	D2	01	00	00	20		
	GET	BE	EF	03	06	00	CD	D2	02	00	00	20	1D 00 01: PC	1D 00 02: HDMI 1 // 1D 00 03: HDMI 2 1D 00 04: VGA
Brightness	GET	BE	EF	03	06	00	89	D2	02	00	03	20	1D 00 XX: Value	
	INCREMENT	BE	EF	03	06	00	EF	D2	04	00	03	20		
	DECREMENT	BE	EF	03	06	00	3E	D3	05	00	03	20		
	SET	BE	EF	03	06	00	89	D2	03	00	03	20	01 XX: Default Value: 0x5D	Range: 0x5D - 0x1E
	RESET	BE	EF	03	06	00	58	D3	06	00	00	70		
Volume	GET	BE	EF	03	06	00	31	D3	02	00	01	20	1D 00 XX: Value	
	INCREMENT	BE	EF	03	06	00	57	D3	04	00	01	20		
	DECREMENT	BE	EF	03	06	00	85	D2	05	00	01	20		
	SET	BE	EF	03	06	00	31	D3	03	00	01	20	01 XX: Default Value: 0x1D	Range: 0x1D - 0X0D
Screen	ON	BE	EF	03	06	00	FB	D8	01	00	20	30		
	OFF	BE	EF	03	06	00	68	D9	01	00	20	30		
	GET	BE	EF	03	06	00	C8	D8	02	00	20	30	1D 00 00: OFF	1D 00 01: ON
Auto Adjust	ON	BE	EF	03	06	00	32	D4	01	00	19	20		Only VGA
	OFF	BE	EF	03	06	00	A2	D5	01	00	19	20		Only VGA
Keypad Lock	ON	BE	EF	03	06	00	93	97	01	00	11	24		
	OFF	BE	EF	03	06	00	03	96	01	00	11	24		
	GET	BE	EF	03	06	00	30	96	02	00	11	24	1D 00 00: OFF	1D 00 01: ON
Remote Controller L	OFF	BE	EF	03	06	00	E7	96	01	00	16	24		
	ON	BE	EF	03	06	00	77	97	01	00	16	24		
	GET	BE	EF	03	06	00	44	97	02	00	16	24	1D 00 00: OFF	1D 00 01: ON
OSD Menu	ON	BE	EF	03	06	00	6A	63	01	00	00	37		
	OFF	BE	EF	03	06	00	FA	62	01	00	00	37		
Contrast	GET	BE	EF	03	06	00	FD	D3	02	00	04	20	1D 00 XX: Value	
	SET	BE	EF	03	06	00	FD	D3	03	00	04	20	01 XX: Default Value: 0x5E	Range: 0x82 - 0x4E
	INCREMENT	BE	EF	03	06	00	98	D3	04	00	04	20		
	DECREMENT	BE	EF	03	06	00	4A	D2	05	00	04	20		
Monitor	ON	BE	EF	03	06	00	19	D3	02	00	00	60		
	OFF	BE	EF	03	06	00	19	D3	02	00	00	60		
	GET	BE	EF	03	06	00	19	D8	03	00	00	60	07 00	1D 00 00: OFF 1D 00 01: ON
Mute	ON	BE	EF	03	06	00	D6	D2	01	00	02	20		
	OFF	BE	EF	03	06	00	46	D3	01	00	02	20		
	GET	BE	EF	03	06	00	75	D3	02	00	02	20	1D 00 00: OFF	1D 00 01: ON
Color Temperature	INCREMENT	BE	EF	03	06	00	08	F5	10	00	B0	30	03 00	8500K, 6500K, 5000K, 7500K, USER
	DECREMENT	BE	EF	03	06	00	C8	F8	01	00	B0	30	13 00	8500K, 6500K, 5000K, 7500K, USER
	GET	BE	EF	03	06	00	C8	F5	02	00	B0	30	00 00	1D 00 XX: Value 00=8500K, 01=6500K, 02=5000K, 03=7500K, 04=USER
Clock	INCREMENT	BE	EF	03	06	00	19	D4	03	00	00	60	03 00	Only VGA
	DECREMENT	BE	EF	03	06	00	19	D5	03	00	00	60	04 00	Only VGA
	GET	BE	EF	03	06	00	19	D7	03	00	00	60	06 00	1D XX XX: Value Only VGA
H-Position	INCREMENT	BE	EF	03	06	00	97	82	04	00	01	21	00 00	Only VGA
	DECREMENT	BE	EF	03	06	00	46	83	05	00	01	21	00 00	Only VGA
	GET	BE	EF	03	06	00	F1	82	02	00	01	21	00 00	1D XX XX: Value Only VGA
V-Position	INCREMENT	BE	EF	03	06	00	68	83	04	00	00	21	00 00	Only VGA
	DECREMENT	BE	EF	03	06	00	8A	82	05	00	00	21	00 00	Only VGA
	GET	BE	EF	03	06	00	0D	83	02	00	00	21	00 00	1D 00 XX: Value Only VGA
Color Temp Gain R	INCREMENT	BE	EF	03	06	00	52	F4	04	00	B1	30	00 00	
	DECREMENT	BE	EF	03	06	00	83	F5	05	00	B1	30	00 00	
	GET	BE	EF	03	06	00	34	F4	02	00	B1	30	00 00	1D 00 XX: Value
Color Temp Gain G	INCREMENT	BE	EF	03	06	00	16	F4	04	00	B2	30	00 00	
	DECREMENT	BE	EF	03	06	00	C7	F5	05	00	B2	30	00 00	
	GET	BE	EF	03	06	00	70	F4	02	00	B2	30	00 00	1D 00 XX: Value
Color Temp Gain B	INCREMENT	BE	EF	03	06	00	EA	F5	04	00	B3	30	00 00	
	DECREMENT	BE	EF	03	06	00	38	F4	05	00	B3	30	00 00	
	GET	BE	EF	03	06	00	8C	F5	02	00	B3	30	00 00	1D 00 XX: Value
Screen Freeze	ON/OFF	BE	EF	03	06	00	19	D3	02	00	00	60	03 00	
Auto Position	EXECUTE	BE	EF	03	06	00	91	D0	06	00	0A	20	00 00	

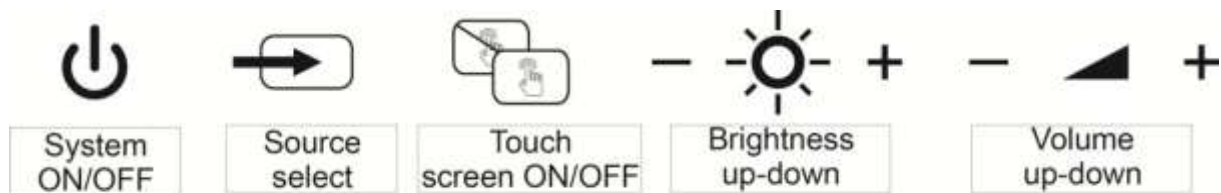
 **Important!**

Install the sound drivers included in your system before using the sound function of your “ INTERACTIVE MONITOR ” In case of any sound distortions during recording, please decrease microphone volume.

The methods of playing and recording sound depend on the operating system in use. Please refer to the instructions in your operating system’s support points for these methods.

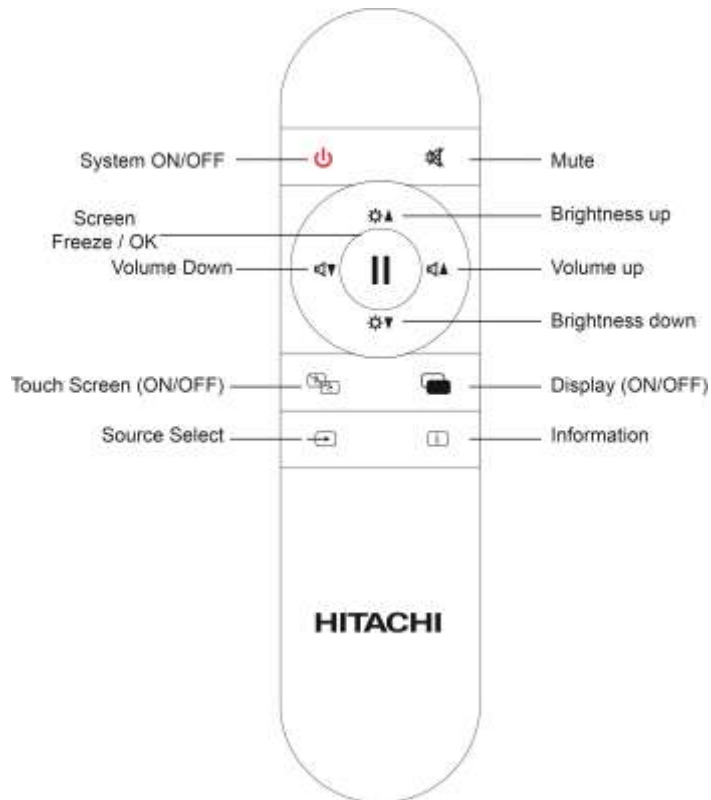
**Function Buttons and Remote Controller:**

There are 7 function buttons on “ INTERACTIVE MONITOR ” . These buttons are shown below and remote controller is shown on the next page;




 **Important!**

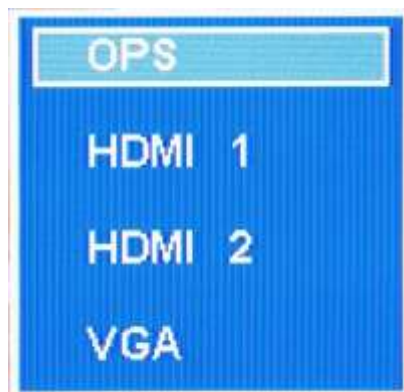
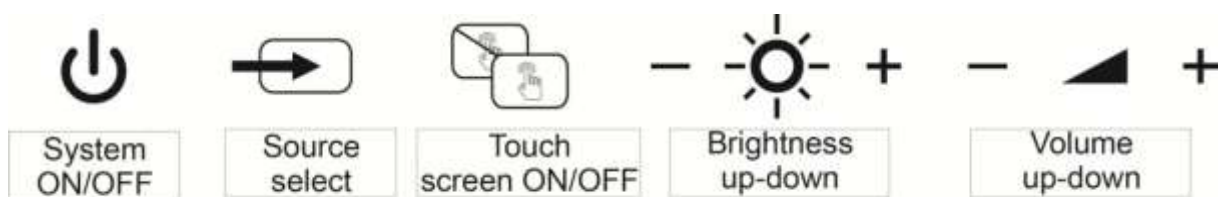
Please hold down the touch screen on/off button for 4 seconds to enable or disable the function of keypad on the front.



### Source Switching Description

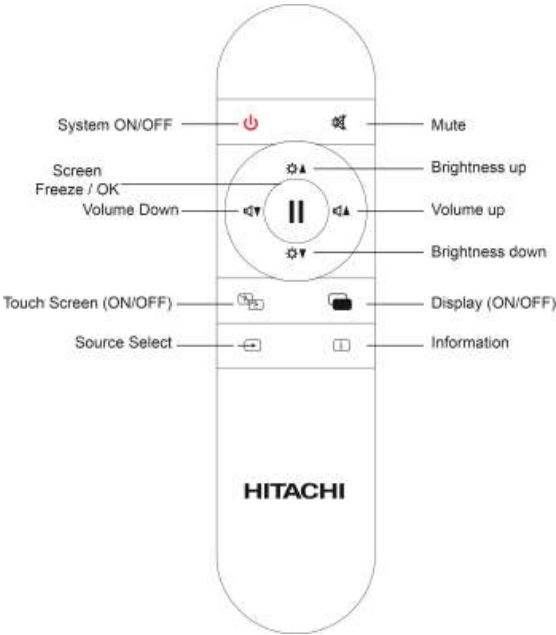
### Source Switching with Keypad Description

Press source “” key to access TV menu with keypad. A menu as shown below is displayed. We can select the desired mode by moving up or down with the brightness or volume keys on keypad. Wait for 5 seconds for switching automatically.



**Source Switching with remote control Description**

You can access TV menu with the source key on the remote. You can switch to the selected source directly by pressing "OK" on the highlighted mode or wait for 5 seconds for switching automatically



A warning message as shown below is displayed when no signal is available on the selected source.







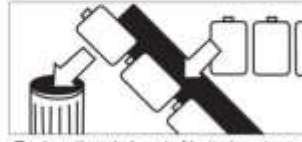
## BATTERY SAFETY GUIDELINES

Used correctly, domestic batteries are a safe and dependable source of portable power. Problems can occur if they are misused or abused — resulting in leakage or, in extreme cases, fire or explosion.

Here are some simple guidelines to safe battery use designed to eliminate any such problems.



Take care to fit your batteries correctly, observing the plus and minus marks on the battery and appliance. Incorrect fitting can cause leakage or, in extreme cases, fire or even an explosion.



Replace the whole set of batteries at one time, taking care not to mix old and new batteries or batteries of different types, since this can result in leakage or, in extreme cases, fire or even an explosion.



Store unused batteries in their packaging and away from metal objects which may cause a short-circuit resulting in leakage or, in extreme cases, fire or even an explosion.



Remove dead batteries from equipment and all batteries from equipment you know you are not going to use for a long time. Otherwise the batteries may leak and cause damage.



Never dispose of batteries in fire as this can cause them to explode. Please recycle dead batteries; do not put with the normal household waste.



Never attempt to recharge ordinary batteries, either in a charger or by applying heat to them. They may leak, cause fire or even explode. There are special rechargeable batteries which are clearly marked as such.



Supervise children if they are replacing batteries themselves in order to ensure these guidelines are followed.



Remember that small button cell batteries such as used in some hearing aids, toys, games and other appliances, are easily swallowed by young children and this can be dangerous.



Keep loose button cells away from young children.



Make sure battery compartments are secure.



Seek medical advice if you believe a cell has been swallowed.



**Note:** Any issues which are caused by customer mis-adjustment of any software including the operating system are not covered by the warranty.

#### **4.1.1. Installation instructions**

The Interactive monitor is supplied with DVD which contains drivers and the Touch Service calibration application.

Please load the contents of the DVD on your external PC to install the drivers and Touch Service. Follow the DVD,s instructions displayed on the screen.

#### **4.1.2. Installation steps**

(1) Double-click the installation file of "setup.exe"



- (2) To exit the installation, please click "Cancel"; to continue, click "Next", directly go to step (3);  
(3) Start the installation by clicking "Install". When completed, click "Finish" and exit. Check "TouchService.exe" in the finishing interface to allow service program to run automatically after the installation is finished. Otherwise, it won't start automatically.  
(4) When the installations finished, a shortcut is available on the desktop as shown below;



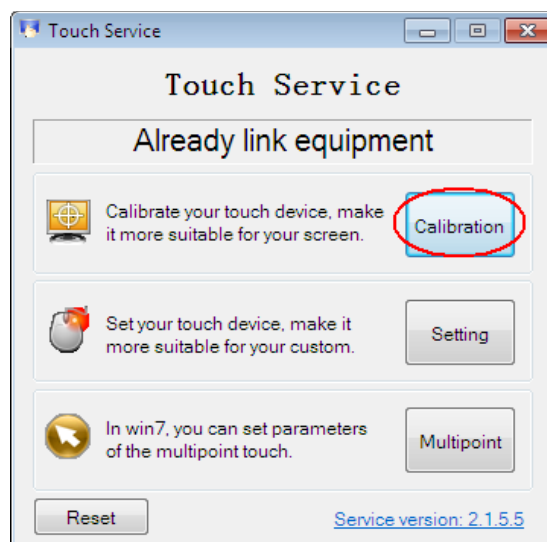
## CALIBRATING THE TOUCH SCREEN

### Function Description

- 1) The coordinates of the touch panel and display screen should be accurately matched by calibration.
- 2) When will calibration be needed?
  - a) The first time you have installed touch panel bundled software.
  - b) Inconsistency occurred between the mouse and your finger action.
  - c) After changing the touch panel or monitor.
  - d) Having moved the touch panel or there is a change in monitor resolution.

### Operating steps

- 1) Click "Calibration" on Touch Service main interface

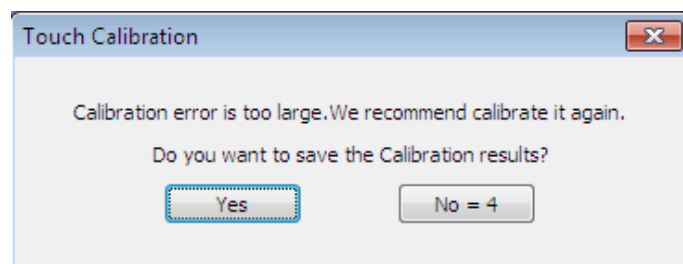


- 2) Touch the center of the calibration points shown on the screen one by one with your finger in order below (Figure 4-6). In total, there are four calibration points. (Upper left corner → upper right corner → lower right corner → lower left corner).
  - a) The number in the center is the countdown. When it comes to zero, you will automatically exit the calibration without saving the result.
  - b) Also, you can press ESC to exit the calibration process without saving the result.






3) Having touched the four calibration points, a dialogue box will pop up. Click "Yes" to save the calibration data and "No" not to. If you don't click yes or no within 10s, you will automatically exit the calibration process without saving the data.



### **Using External Sources with INTERACTIVE MONITOR**

- Plug the cable of the external source (HDMI1 – HDMI2 – VGA)
- Plug the USB cable which transfer the data of the touch screen to external sources
- Important:** Please connect the line in cable while using the VGA source for transferring the audio data
- Please use your external source's display settings and select INTERACTIVE MONITOR as a monitoring device
- Plugging AC cable of Interactive Monitor is enough for using your external sources.

For switching to external sources you should press source select button “”

Be sure that which source ( HDMI1- HDMI2 - VGA) is active.

## **POWER SPECIFICATIONS**

<b>Mode</b>	<b>Power Indicator</b>	<b>Power Consumption</b>
On	Off	Max. 220w
Stand by / Suspension	Red	<3W
Off	Blinking	<3W

## **CHAPTER 3:**

### **USING YOUR INTERACTIVE MONITOR MORE EFFECTIVELY**

Paying attention to the following points with respect to your Interactive Monitor will provide a stable performance and also prolong its life. Following titles are covered under this section:

- Ensuring security of your Interactive Monitor
- Daily care of your

#### **Daily Care**

- Environmental Factors

Ambient temperature must be between 10°C - 35°C while your Interactive Monitor is running. Do not directly expose your Interactive Monitor to humidity, high temperature, fire, direct sun light and dust while using it. The vent holes of your Interactive Monitor will allow it perform safer without system overheating. Do not cover these holes or do not prevent air flow with an object. Position your Interactive Monitor at least 15 cm away from strong magnetic field generating electrical devices such as TV, refrigerator or large speakers. Do not suddenly take your from a cold environment and suddenly put it in a warm environment. A sudden temperature change of 10°C may cause some of the internal parts to malfunction. Do not put your on an uneven surface.

- General points

Do not put heavy objects on your Interactive Monitor. The screen is extremely sensitive and may be damaged.

Never use hard cleaning materials on your screen. Do not touch it with your fingertips or objects like a pencil.

Do not disable the “backlight” setting from power management. Its automatic turn off is one of the factors ensuring its long-life.

- Points to be taken into consideration while cleaning the

Your system must be turned off while cleaning your Interactive Monitor. Please use a soft and damp piece of cloth for cleaning its surface. Do not use chemical cleansers to clean the screen. Do not directly apply the cleaning material on your monitor.

## **CHAPTER 4:**

### **TROUBLESHOOTING**

Some troubleshooting issues are mentioned in this chapter under the following titles:

- Points to be checked first
- Frequently asked questions
- Restarting your system

#### **Points to be checked first**

When a problem occurs, it is very important to diagnose this problem correctly. Try to find out what it is. Determine what causes the problem and under which category it falls. Write down the error codes and messages displayed on the screen, if possible. Contact technical support to get support.

### **FREQUENTLY ASKED QUESTIONS**

#### **Sound Issues**

##### **Check the following:**

Be sure that sound volume is not low and sound is not muted. Ensure that the sound driver and its application are installed properly. Check that your system is not in Hibernate mode. Check cable connections in case you use an external speaker.

**Symptom:** External microphone and auditory devices are not working

##### **Check the following:**

Make sure that the cables are properly and firmly connected. Check that the driver is installed. Check sound settings and whether the system is muted or not.

#### **Issues about turning on the system**

**Symptom:** System does not start, led is not on.

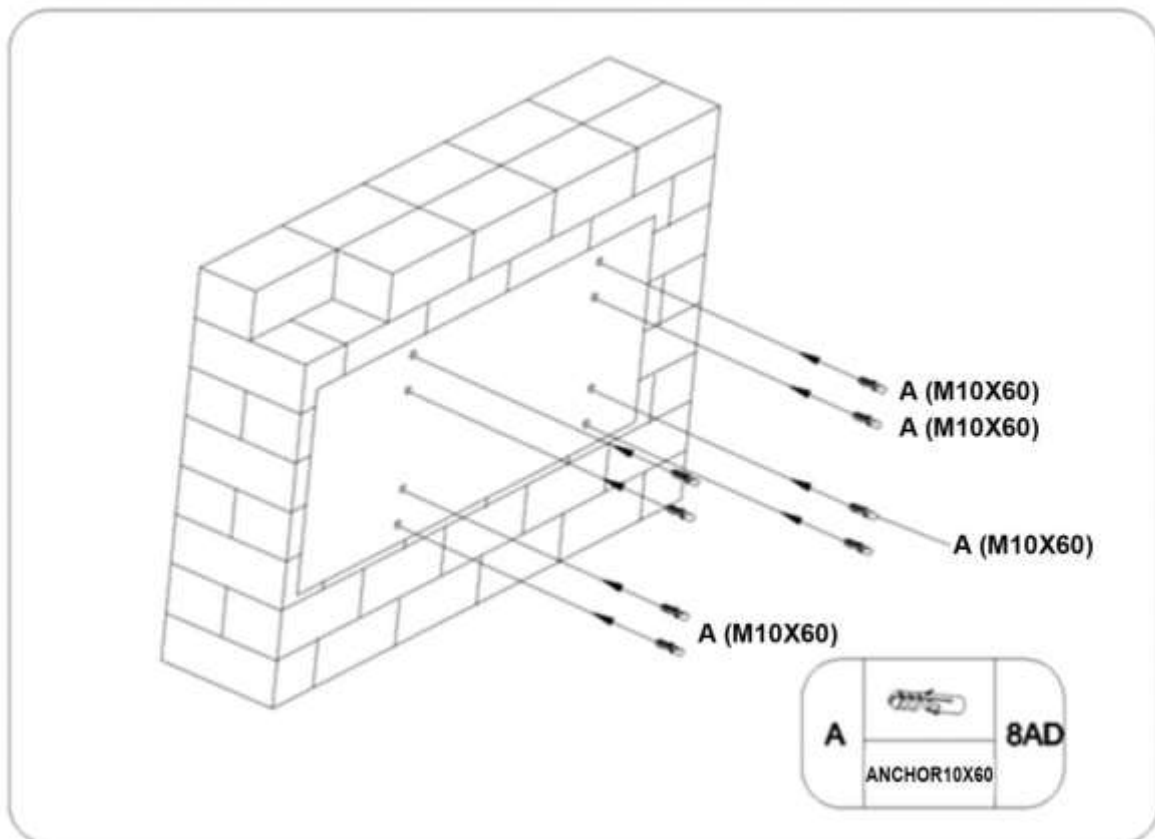
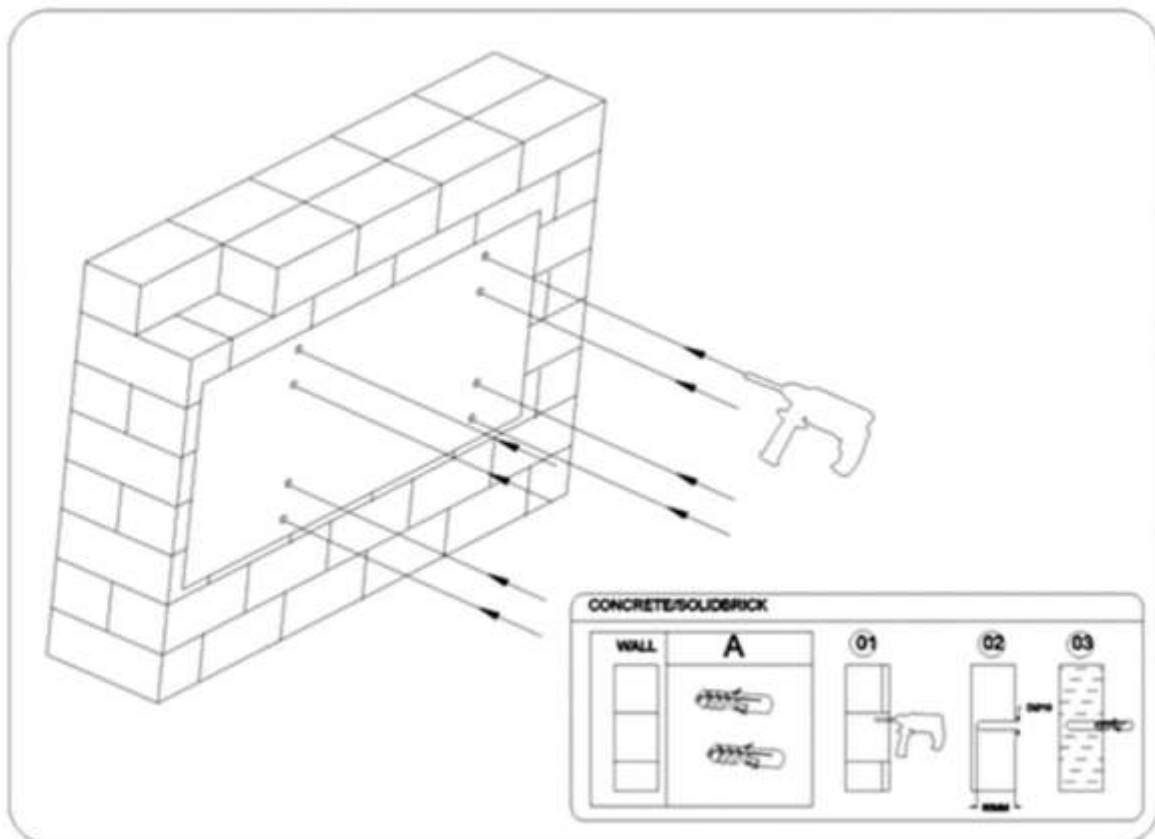
##### **To be checked:**

Be sure that AC cable is connected firmly.

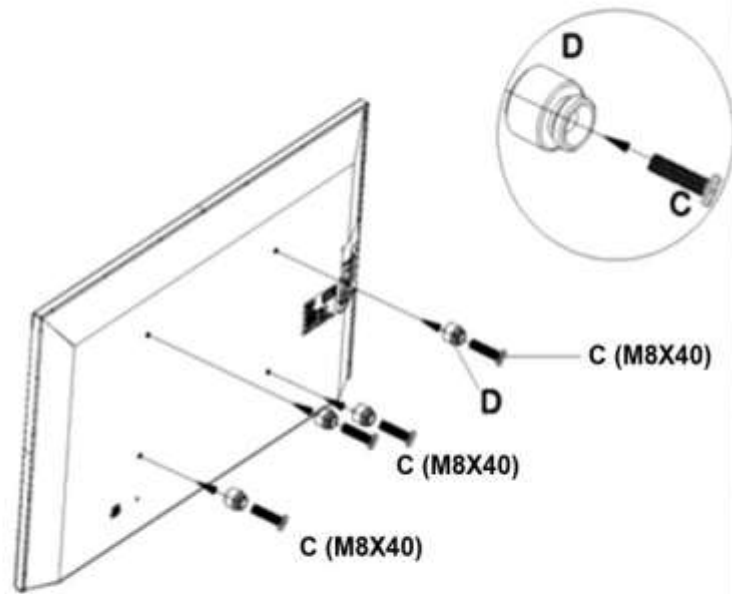
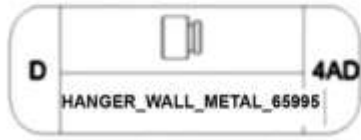
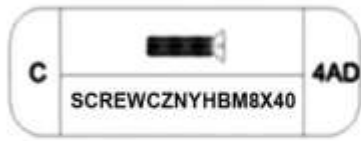
**Symptom2:** System doesn't work but background light is on.

**To be checked:** Be sure that which source (HDMI1- HDMI2 - VGA) is active.

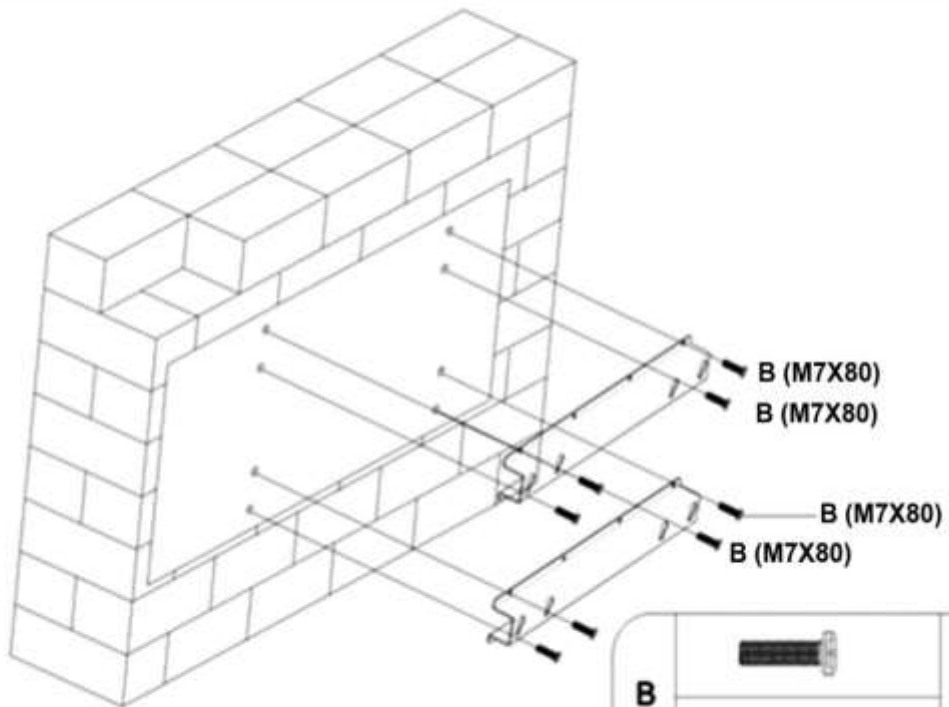
**CHAPTER 5:**  
**ASSEMBLY INSTRUCTION FOR INTERACTIVE MONITOR WALL MOUNT**



### ASSEMBLYTV



### ASSEMBLYWALL



# HITACHI

Inspire the Next

**Manufacturer:**  
Hitachi Europe Ltd.,  
Whitebrook Park,  
Lower Cookham Road,  
Maidenhead,  
Berkshire SL6 8YA  
U.K.