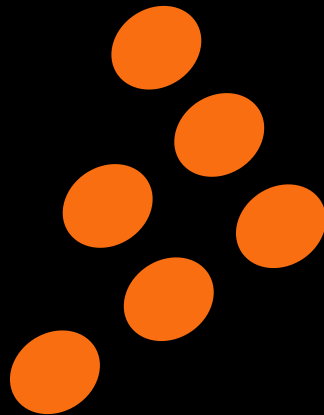




# U-MIX CONTROL 2

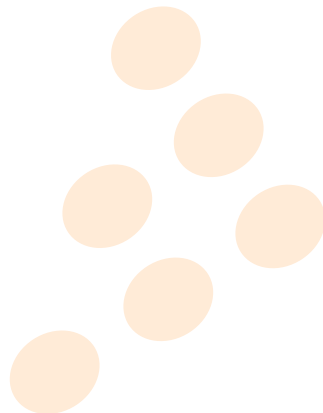
---

**User Manual**



# Contents



<b>1</b>	<b>Connections</b>	<b>5</b>
<b>2</b>	<b>Installation</b>	<b>6</b>
2.1	Windows	6
2.2	Mac OS X	8
2.3	Launching CROSS DJ LE	8
2.4	License Key	8
<b>3</b>	<b>Audio Configuration</b>	<b>9</b>
<b>4</b>	<b>Controller Overview</b>	<b>10</b>
4.1	Top Panel	10
4.2	Rear Panel	13
<b>5</b>	<b>Software Overview</b>	<b>14</b>
5.1	Menu	14
5.2	Head-Up Display (HUD)	14
5.3	Players	15
5.4	Integrated Mixer	15
5.5	Dock	16
5.6	Browser	16
5.7	Preview Deck	16
<b>6</b>	<b>Importing Audio</b>	<b>17</b>
6.1	Importing Folders	17
6.2	iTunes® Integration	17
<b>7</b>	<b>Loading Tracks</b>	<b>18</b>
<b>8</b>	<b>First Mix with CROSS DJ LE and U-MIX CONTROL 2</b>	<b>19</b>
<b>9</b>	<b>Troubleshooting</b>	<b>20</b>
<b>10</b>	<b>Frequently Asked Questions</b>	<b>21</b>





# Important safety instructions

- 1 Read these Instructions.
- 2 Keep these Instructions.
- 3 Heed all Warnings.
- 4 Follow all Instructions.
- 5 Do not use this apparatus near water.
- 6 Clean only with a damp cloth.
- 7 Do not block any of the ventilation openings. Install in accordance with the manufacturer's instructions.
- 8 Do not install near any heat sources such as radiators, heat registers, stoves, or other apparatus (including amplifiers) that produce heat.
- 9 Do not defeat the safety purpose of the polarized plug. The wide blade is provided for your safety. If the provided plug does not fit into your outlet, consult an electrician for replacement of the obsolete outlet.
- 10 Protect the power cord from being walked on or pinched particularly at plug, convenience receptacles, and point where they exit from the apparatus.
- 11 Only use attachments/accessories specified by the manufacturer.
- 12 Use only with a cart, stand, tripod, bracket, or table specified by the manufacturer, or sold with the apparatus. When a cart is used, use caution when moving the cart/apparatus combination to avoid injury from tip-over.
- 13 Unplug this apparatus during lighting storms or when unused for long periods of time.
- 14 Refer all servicing to qualified service personnel. Servicing is required when the apparatus has been damaged in any way, such as power-supply cord or plug is damaged, liquid has been spilled or objects have fallen into the apparatus, the apparatus has been exposed to rain or moisture, does not operate normally, or has been dropped.

WARNING	
To reduce the risk of the fire or electric shock, do not expose this apparatus to rain or moisture. The apparatus shall not be exposed to dripping or splashing and that no objects filled with liquids, such as vases, shall be placed on the apparatus.	

	<b>CAUTION</b> RISK OF ELECTRIC SHOCK DO NOT OPEN		<b>CAUTION:</b> To reduce the risk of electric shock, do not remove any cover. No user-serviceable parts inside. Refer servicing to qualified service personnel only.
---	---	---	---

	The lightning flash with arrowhead symbol within the equilateral triangle is intended to alert the user to the presence of un-insulated "dangerous voltage" within the product's enclosure that may be of sufficient magnitude to constitute a risk of electric shock.
---	--

	The exclamation point within the equilateral triangle is intended to alert the user to the presence of important operation and maintenance (servicing) instructions in the literature accompanying this appliance.
---	--

CAUTION	
To prevent electric shock, do not use this polarized plug with an extension cord, receptacle or other outlet unless the blades can be fully inserted to prevent blade exposure	

# Welcome

Thank you for choosing MixVibes U-MIX CONTROL 2. MixVibes U-MIX CONTROL 2 is a DJ package including CROSS DJ LE software and an external MIDI DJ controller. This is the perfect package for DJs seeking a compact DJ solution which makes no compromise on the design and quality of the hardware.

Take a few minutes to run through this quick start guide and you'll be on your way to making great mixes on MixVibes U-MIX CONTROL 2 in no time at all!

We invite you be a part of the MixVibes community to share your experiences with other DJs, find help and advice, and check for available updates. See you online on the [forum<sup>1</sup>](#) or on the [website<sup>2</sup>](#)!

## Minimum System Requirements for PC

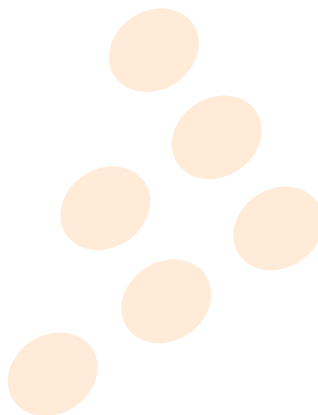
- Windows XP SP2 or Windows Vista SP2 or Windows 7. We recommend Windows 7 or XP over Vista.
- Intel Core 2 Duo / 1.8 GHz or equivalent
- 1 GB RAM
- One available USB port
- Hard drive space for music

## Minimum System Requirements for MAC

- Mac OS X 10.4
- Intel Core 2 Duo / 1.8 GHz or higher
- 1 GB RAM
- One available USB port
- Hard drive space for music

## Box Contents

- CROSS DJ LE installation disc
- U-MIX CONTROL 2 - USB DJ MIDI controller
- 1 USB cable
- This user manual



---

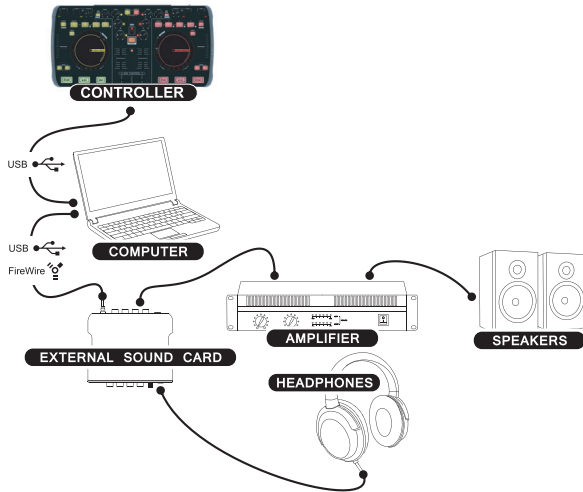
<sup>1</sup><http://forum.mixvibes.com>

<sup>2</sup><http://www.mixvibes.com>

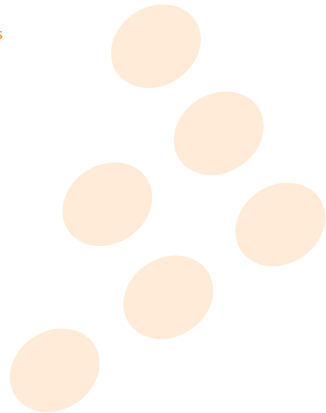
# 1 Connections

Follow the instructions below to use MixVibes U-MIX CONTROL 2 with the integrated mixer.

- 1 Connect outputs 1/2 of your audio interface to your sound system (amplifier, powered speakers, or home stereo).
- 2 Connect your headphones to your audio interface's headphone output. Audio interfaces may vary, please refer to the owner's manual included with your audio interface for details on its headphone output.
- 3 Connect the audio interface to your computer (USB, Firewire or PCI).
- 4 Turn on your audio interface.
- 5 Connect your U-MIX CONTROL 2 to your computer.
- 6 To turn on your U-MIX CONTROL 2, set the rear panel selector to 'USB'.



Connections



## 2 Installation

Please log in on our [forum](#) in order to register your product and to check for the latest download version of CROSS software. If it is newer than what is on your CD-ROM, we recommend installing it instead.

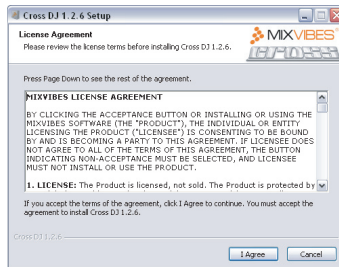
### 2.1 Windows

- 1 Insert CROSS DJ LE installation disc into your computer's CD-ROM drive. The installation program will launch automatically. In case it does not, open Windows Explorer, navigate to the CROSS DJ LE installation disc and double-click on the file «Install Cross DJ LE.exe».
- 2 Choose your language and click **OK**.



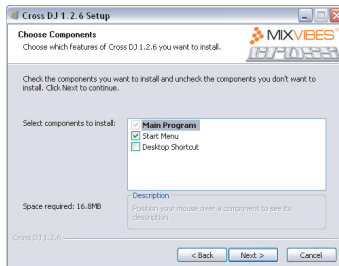
Language Selection

- 3 Read and accept the End-User License Agreement by clicking **I Agree**.



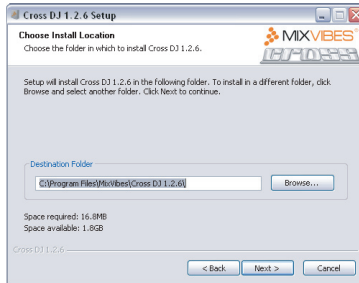
End-User License Agreement

- 4 Select the Components you want to install and click **Next**.



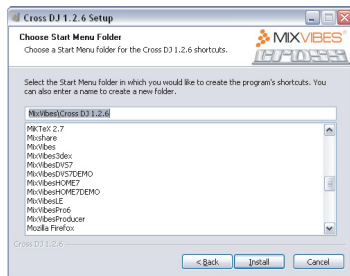
Components Selection

- 5 Choose the folder in which you want to install CROSS DJ LE and click **Next**.



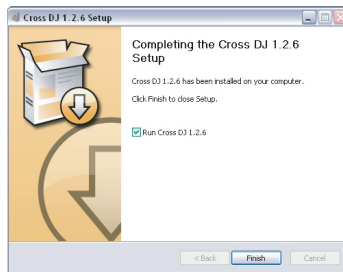
Choose Install location

- 6 Choose the Start Menu folder in which you want to create the CROSS DJ LE shortcut. To start the installation, click **Install**.



Start Menu Folder Location

- 7 Once the installation is complete you can click **Finish**. If the check box **Run CROSS DJ LE** is selected, CROSS DJ LE will launch automatically.



Finish Installation

## 2.2 Mac OS X

- 1 Insert the CROSS DJ LE installation disc into your computer's CD-ROM drive.
- 2 Double-click the CROSS DJ LE icon on your desktop.
- 3 Drag and drop CROSS DJ LE into your "Applications" folder.



Installing CROSS DJ LE

## 2.3 Launching CROSS DJ LE

**Windows** Go to [Start > All Programs > MixVibes > Cross DJ LE] and click on the CROSS DJ LE icon.

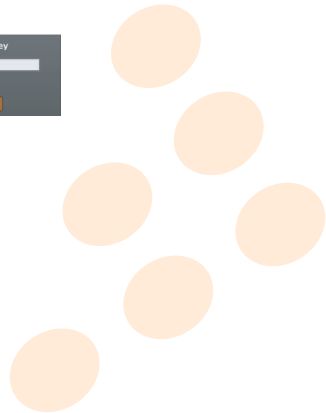
**Mac OS X** Go to [Applications > Cross DJ LE] and double-click on CROSS DJ LE.

## 2.4 License Key

Enter the License Key found on the sleeve of your installation disc and click **Submit**.



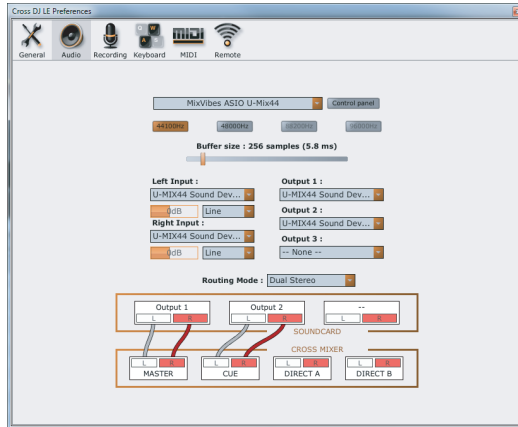
License key





## 3 Audio Configuration

- 1 Go to [File > Preferences > Audio].



Audio Configuration Pane

- 2 Select your **audio interface** from the pull down menu.
- 3 Choose your desired **sample rate** and **buffer size**. You can start by using a sampling rate of 44.1 kHz and a buffer size of 256 samples.
- 4 Select the **inputs** and **outputs** of the audio interface from the pull down menus.
- 5 Select your **routing mode**. If you are using an external mixer, select the routing mode External Mixer.

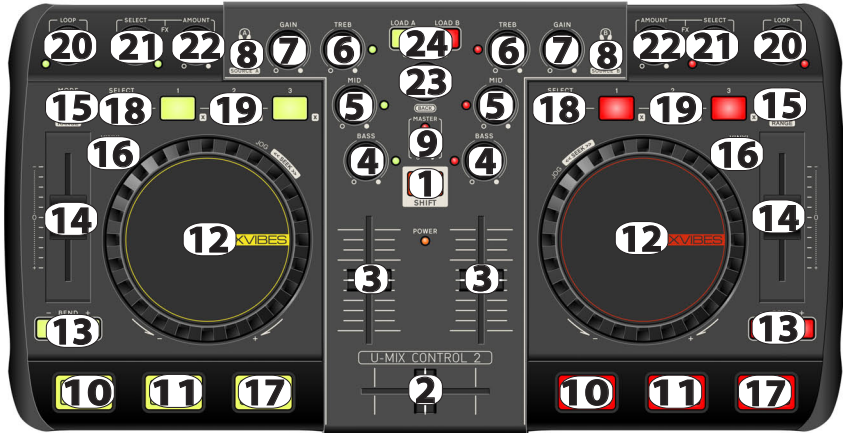
Here is a description of the different routing modes:

- Simple Stereo** The sum of the Master and Cue/Monitor signals are routed to outputs 1/2 on your audio interface.
- Dual Stereo** The Master signal is routed to outputs 1/2 and the Cue/Monitor signal is routed to outputs 3/4 on your audio interface.
- Split Mono** The Master and Cue/Monitor signals are folded down to mono. The mono Master is routed to output 1 and the mono Cue/Monitor is routed to output 2 on your audio interface.
- External Mixer** Deck A direct out is routed to outputs 1/2 on your audio interface, and Deck B direct out is routed to outputs 3/4. For audio interfaces with more than 4 outputs, the Cue/Monitor out is also routed to outputs 5/6.

## 4 Controller Overview

Each U-MIX CONTROL 2 button has a primary and a secondary function. Primary functions are direct, just press the desired button. To access the secondary functions, hold SHIFT and press the desired button.

### 4.1 Top Panel



Top panel

**1. Shift:** holding shift engages shift functions of many of the buttons, secondary functions are printed inside a grey box.

#### MIXER CONTROLS

**2. Crossfader:** blends audio between the left and right channels.

**3. Volume:** adjusts the players' audio level.

**4. 5. 6. Equalization:**

- If you turn the buttons: a 3-band equalizer is available to modify the equalization of your media file. Treble, medium and bass can be adjusted with these knobs.
- If you press the buttons: kills basses or mediums or trebles frequencies of your media file.

**7. Gain:** adjusts the pre-fader, pre-EQ audio level of the corresponding channel.

**8. Cue/Monitor:** sends the corresponding deck to the headphones mix.

*Shift function **Source:** Input selectors (Player or Line In). If you want to use a turntable, a CD player or a MP3 player (iPod®), you have to select Line In.*

**9. Master:** adjusts the master output level and displays if signal clipping occurs.

## PLAYBACK CONTROLS

**10. Cue:** defines a cue point and stops the playback of a media file (when the media file stops playing it will return to the defined cue point).

If no Cue Point is assigned, or if the deck is paused, press Cue to set a Current Cue Point. While the media is playing, press it again to skip back to the Current Cue Point and pause playback. You can hold down Cue to start playback from the Current Cue Point. Release it to skip back to the Current Cue Point and pause playback. You can hold down Cue and Play/Pause simultaneously to start playback from the Current Cue Point. Release both buttons to allow playback to continue.

*Shift function **Cue/Set:** defines a cue point on the fly.*

**11. Play/Pause:** starts or pauses playback of a media file.

*Shift function **Cue Play:** jumps the media back to the Current Cue Point without stopping playback.*

**12. Jog Wheel:** the jog wheel can be used for a number of functions. When the media is first loaded you can use the jog wheel to cue up the media. When a media is playing and Vinyl mode is active you can use the jog wheel to scratch. When a media is playing and Vinyl mode is not active you can use the jog wheel to temporarily change the pitch of the media. Note: this will automatically revert back to the default pitch when you let go of the jog wheel.

*Shift function **Jog Seek:** skips through the media at high speed.*

## PITCH CONTROLS

**13. Pitch bend:** hold these buttons down to temporarily alter the speed the playing media. When released, the media playback will return to the speed designated by the pitch slider.

*Shift function **Fine:** hold these buttons down to temporarily and finely alter the speed the playing media.*

**14. Pitch slider:** changes the speed of the currently playing media.

**15. Speed/Tempo/Hybrid select:** selects Speed or Tempo or Hybrid.

If Speed mode has been selected you can adjust the pitch like with a normal turntable.

If the Tempo mode has been activated it is possible to change the pitch via the pitch fader without influencing the tone pitch. This means that the song's tonal key remains the same while changing its speed.

The hybrid mode is a combination of the speed and the tempo warping modes, hence its name. It is equivalent to the tempo mode in the (-33%; +33%) speed range and to the speed mode below -66% and above +66%. In the remaining speed ranges (-66%; -33%) and (33%; 66%), the pitch is gradually increased or decreased to smooth the pitch transitions. This mode gives the best of the speed and tempo modes: a more natural sound at extreme speed values, and a wide constant-pitch range around 0% speed.

*Shift function **Pitch range:** sets the range of the pitch slider. Push this button to change it between 4%, 6%, 8%, 16%, 32% and 100%.*

**16. Vinyl:** while a track is playing with this option turned on, you can use the jog wheel to scratch your media; if this button is off, the jog wheel will allow you to change the speed.

**17. Sync:** synchronizes the BPM and the beat with the adjacent player.

*Shift function **Match:** only synchronizes the BPM with the adjacent player.*

## LOCATORS CONTROLS

**18. Select:** switches between the commands of the locators 1/2/3 and the locators 4/5/6. If the select button is on, you can play with the locators 4/5/6.

**19. Locator:** defines and reaches six locator points (hot cues) in the media being played. To save a locator point, push a locator button. To go to a locator point, push a previously saved locator button again. Once it is assigned, the locator button will light up.

*Shift function **Clear locators:** clears a defined locator point.*

## LOOP CONTROLS

### 20. Auto Loop:

- If you turn the button: changes the currently selected auto loop length or change the length of the active loop by moving its end point.

*Shift function **Smart Seek/Loop Jump:** loops jump/moves forward or backward the amount of beats as defined in the Smart Seek Length. If an auto loop is enable, the loop will also be moved backwards or forwards.*

- If you press the button: enables/disables an auto loop.

*Shift function **Smart Seek/Loop Jump Length:** selects the step size in beats.*

## EFFECT CONTROLS

### 21. Effect:

- If you turn the button: selects an effect.
- If you press the button: enables/disables current effect.

**22. Effect amount:** sets current effect amount.

## BROWSE CONTROLS

### 23. Browse:

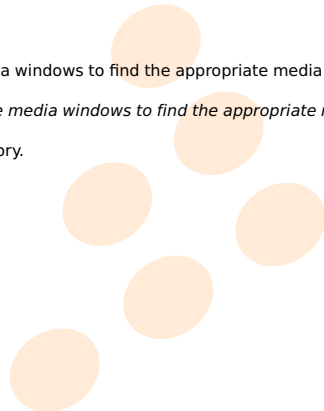
- If you turn the button: allows to navigate in the media windows to find the appropriate media.

*Shift function **Quick Browse:** allows to navigate faster in the media windows to find the appropriate media.*

- If you press the button: opens the highlighted directory.

*Shift function **Back:** returns to the parent directory.*

**24. Load:** loads the highlighted media into a player.

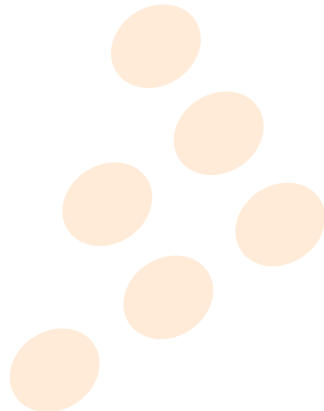


## 4.2 Rear Panel



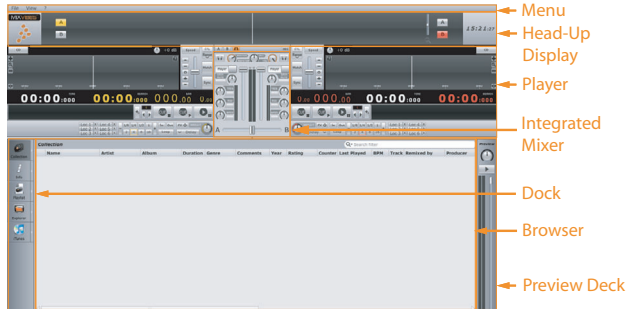
Rear panel

- 1. Power adapter input:** connect the power adapter here (optional, can be bought separately if USB power is too low).
- 2. Power switch (adaptor / Off / USB power):** set the switch to Adaptor when using the adequate adaptor, set to USB power when using power provided from the computer via USB.
- 3. USB connection:** used to connect U-MIX CONTROL 2 to your computer.
- 4. Kensington® safety slot:** accommodates a plug associated with a padlock, then connected to a cable to be fixed around a fixed object, or difficult to move.



## 5 Software Overview

Once CROSS DJ LE is configured, you will see the following graphical interface:



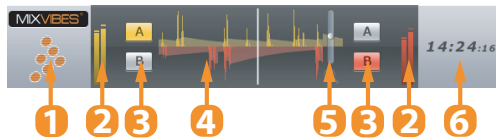
User Interface

### 5.1 Menu

The menu lets you access various commands in CROSS DJ LE.

### 5.2 Head-Up Display (HUD)

The Head-Up Display contains information essential to your mix:



Head-Up Display

- 1 MixVibes logo.
- 2 Input level meters.
- 3 Deck Selectors.
- 4 The Beat Matcher display gives a visual representation of the synchronization between the players.
- 5 Zoom.
- 6 Clock.

## 5.3 Players

The Players control the various playback functions of an audio file.

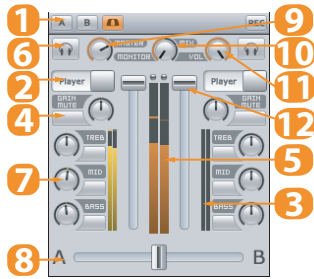


Player

- 1 Mode selector between Vinyl or CD.
- 2 Displays the Title, Artist and Duration of the audio file.
- 3 Track gain.
- 4 Mode selector for the pitch fader. Selects between Speed, Tempo, or Hybrid modes.
- 5 Pitch fader.
- 6 Pitch range selector. Set the range of the pitch fader up to +/- 100%.
- 7 Match the speed or tempo of the other deck.
- 8 Sync to the nearest down-beat of the other deck.
- 9 Full track display. Gives an overview of the waveform for the entire audio file. Clicking on the waveform will jump to the clicked point in the track.
- 10 Set locators for seamless cue points.
- 11 Auto loop.
- 12 Reverse the playback direction.
- 13 Smart seek.
- 14 Manual loop.
- 15 Effect.
- 16 Play/Pause and Cue.

## 5.4 Integrated Mixer

When in External Mixer routing mode, only functions 1-3 will be available.



Integrated Mixer

- 1 Record Master.
- 2 Input selectors (Player or Line In). If you want to use a turntable, a CD player or a MP3 player (iPod®), you have to select Line In.
- 3 Player output meters.
- 4 Gain.
- 5 Master output meter.
- 6 Pre Fader Listen.
- 7 EQ.
- 8 Crossfader.
- 9 Master Level.
- 10 Cue Mix.
- 11 Cue Level.
- 12 Players Level.

## 5.5 Dock

The dock is the central component of the media management. It hosts multiple tabs which can be un-docked to view two or more lists at the same time. To un-dock a tab, click on the arrow to the right of the tab icon.

## 5.6 Browser

The browser displays the track information in list view and enables you to scroll through your collection and load tracks into the players.

## 5.7 Preview Deck

The preview deck enables you to quickly preview and select tracks in the headphones without loading them into a player. When in Play mode the preview deck will play the track currently selected in the browser.

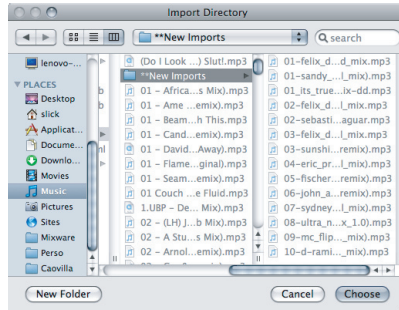


## 6 Importing Audio

### 6.1 Importing Folders

To import an entire music folder:

- 1 Go to [File > Import Directory...]
- 2 Choose a folder or disc containing your music and click **Choose**.
- 3 CROSS DJ LE will import all the audio tracks into the Collection.



Locating a Folder

You can also import files by going to [File > Import File...] or playlists by going to [File > Import Playlist...].

### 6.2 iTunes® Integration

If you use Apple's iTunes® software to manage your track collection, you can access your iTunes® Library and playlists by clicking on the iTunes® tab in the Dock.

To import tracks from iTunes®:

- 1 While viewing your collection, un-dock the iTunes® tab.
- 2 Select the tracks you want to import.
- 3 Drag and drop your selection into the collection window or right-click (CTRL+click on Mac) and choose **Add to Collection**.

## 7 Loading Tracks

After importing your audio tracks you can load them into the players. There are three ways of loading tracks:

### With the controller

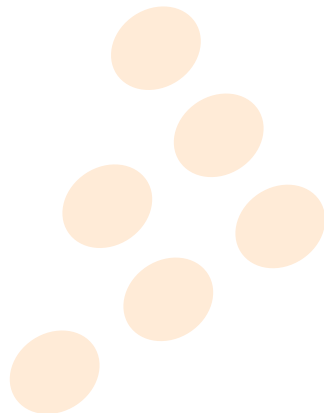
Use the 'Browse' control to scroll through your collection. Load the highlighted track into one of the players by using the 'Load A' or 'Load B' controls.

### With the mouse

- Drag and drop a track from the collection to one of the players.
- Right-click (CTRL+click on Mac) and select **Load in Player A, B or Active.**

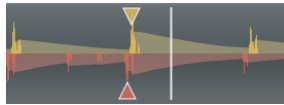
### With the keyboard

Use the up and down arrow keys to scroll through your collection. Load the highlighted track into one of the players by using the Load shortcut **SHIFT + Arrow left/right** (Configure your shortcuts in [File > Preferences > Keyboard > Media Rack]).



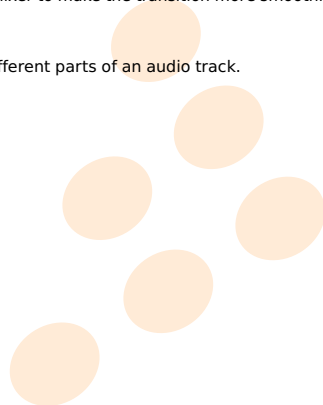
## 8 First Mix with CROSS DJ LE and U-MIX CONTROL 2

- 1 Load a track into the player A and the waveform will appear.
- 2 Start playback of the audio in the player.
- 3 You should now hear the music in your speakers: You can start mixing.
- 4 While the track on deck A is playing for the audience, press the Cue/Monitor button on deck B so that you can pre-listen the track you will be preparing on deck B on your headphones while the audience continues to listen to the track being played on deck A over the speakers (you need to use a 2-outputs ASIO soundcard and the Cue/Monitor output needs to be configured in the audio preferences).
- 5 The two audio tracks are most likely not at the same tempo. You need to match the tempo of both tracks, and synchronize one player with the other by:
  - adjusting the pitch (via the pitch fader and the pitchbend buttons or the jogwheel platter of the U-MIX CONTROL 2). Use the Beat Matcher in the Head-Up Display as visual indicator.



Beat Matcher

- using the Sync buttons to automatically perform those two tasks. Pressing the Sync button will adjust the playback position to match the downbeat of the other player and match the tempo of the other player.
- 6 Adjust the level using the Gain knob, which allows you to set the overall level to match that of the track playing on the other deck.
  - 7 To go from one track to another, move the crossfader from left to right, or use the channels faders on the integrated mixer of the U-MIX CONTROL 2.
  - 8 You can also change the channel equalization of the mixer to make the transition more smoothly between the two tracks.
  - 9 You can also use the effects and loops to highlight different parts of an audio track.



## 9 Troubleshooting

### The audio tracks are not playing back

- Make sure you selected the correct audio interface in the audio preferences window.
- Make sure you activated the correct outputs of your audio interface in the audio preferences window.
- Make sure you selected the correct Routing Mode in the audio preferences window.

### There is no sound going out of the speakers

- Check for activity on the output meter of the internal mixer. If there is no response from the meter, check all the controls of the mixer: faders, gain, kills, etc.
- If you are in external mixer mode, check your connections from your audio interface to your mixer and from your mixer to your sound system. Make sure you have the proper inputs selected on your mixer.

### The controller has no effect on CROSS DJ LE

- If the Power LED is OFF:
  - Check that the button is not on OFF or AC position.
  - Check/change the USB cable and turn the switch on the USB position.
  - Use an adaptor and turn the switch on the AC position.
- If the Power LED is ON:
  - Change the USB port.
  - Close the program and open it again after you have connected and powered on the controller correctly.

### There is some audio dropouts or slow response

- Change the buffer size setting in the Audio preferences. If you hear crackling sounds, it means your latency setting is too low, choose a larger buffer size and test again.
- Close any unnecessary applications.
- Disable your anti-virus, spyware and firewall softwares.
- Turn off your computer's wireless card (or disconnect from the Internet).
- Close useless background processes by deactivating them. For example on Windows, hit CTRL + ALT + DEL, open the Task manager, go to the processes tab, close the useless processes.
- If you are very serious about your DJing, the first thing to do is partition your HD and dedicate a clean install only to MixVibes. Make sure you never use Internet. This will avoid all potential worms and backdoors that can considerably slow down your application.

# 10 Frequently Asked Questions

## How do I update my software?

To download the latest version of your MixVibes software, you will need to be registered on the MixVibes Forum.

To register:

- Go to our [forum](#).
- Click on “Register” on the “Board Index” sidebar.
- Read the terms and click on “I agree to the terms”.
- Fill out your profile with your user name, valid e-mail address, and password.
- IMPORTANT: You will need your software license key to complete the registration (written on the back of your installation CD sleeve).
- You will receive an e-mail with an activation link to complete registration.

To download/install:

- Go to the Download Center.
- Select your version of MixVibes and find the latest update.
- Click the “download” button near the bottom of the page.
- Once the download is finished, extract the folder and run the EXE (PC) or DMG (MAC) file.

## How do I recover my lost serial number?

We recommend keeping your serial number (which is printed on the back of the installation CD sleeve) by registering on the forum, and entering it in the space provided. We'll be able to recover it for you in case you lose it.

## How do I know the controller's firmware version?

- 1 Make sure your controller is connected via USB to the computer.
- 2 Power the device OFF.
- 3 Press and hold the SHIFT and BASS\_B buttons of the U-MIX CONTROL 2.
- 4 Power the device ON, keep holding the SHIFT and BASS\_B buttons.
- 5 The firmware version is given by the lighted LEDs: Version X.Y
  - 1 X (on the deck A): 1 (PITCH MODE), 2 (SELECT), 3 (LOCATOR1), 4 (LOCATOR2), 5 (LOCATOR3), 6 (VINYL), 7 (BEND-), 8 (BEND+), 9 (SYNC)
  - 2 Y (on the deck B): 1 (PITCH MODE), 2 (SELECT), 3 (LOCATOR1), 4 (LOCATOR2), 5 (LOCATOR3), 6 (VINYL), 7 (BEND-), 8 (BEND+), 9 (SYNC)
- 6 Press SHIFT to go back to normal Mode.

## How do I upgrade my controller's firmware?

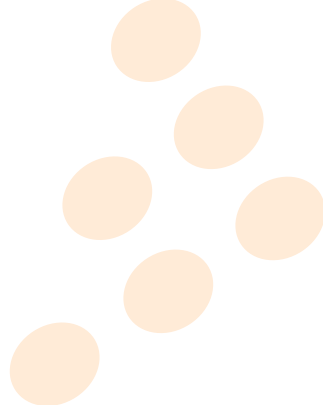
- 1 Make sure your controller is connected via USB to the computer.
- 2 Power the device OFF.
- 3 Press and hold the SHIFT and BROWSE buttons of the U-MIX CONTROL 2.
- 4 Power the device ON, keep holding the SHIFT and BROWSE buttons.
- 5 Both "SOURCE(AB)" buttons should light up (SHIFT and BROWSE buttons shouldn't be pressed anymore).
- 6 A new drive named "midiUppDisk" should be found in your system.
- 7 Drag and drop the firmware file ("U-MIX\_2\_\*.bin") into the "midiUppDisk" drive.
- 8 The Kill-LEDs will start to flash while upgrading: BASS(AB): Update Data (30%), MID(AB): Update Data (60%), TREB(AB): Update Data (90%), LOAD(AB): Update Success (if LOAD(AB) Turn Off means Updating Error).
- 9 After the firmware is updated, the LEDs will turn off.

## Can I use U-MIX CONTROL 2 with DJ software other than CROSS DJ LE?

Yes, your U-MIX CONTROL 2 is a standard MIDI controller that sends MIDI commands. U-MIX CONTROL 2 can be used with any software that accepts MIDI commands.

## How can I record the mixes that I create with the U-CONTROL MIX 2?

You can record your mix by choosing whether you want to save the channel A, B or Master and then by clicking on the REC button present in the upper part of the integrated mixer of CROSS DJ LE. You can customize the recording settings in [File > Preferences > Recording].



# Index

Audio configuration, 9

Audio routing modes, 9

Effect, 12

Firmware, 21, 22

Locator (hot cue), 12, 15

Loop, 12, 15

MP3 player / iPod, 10, 16

Recording, 16, 22

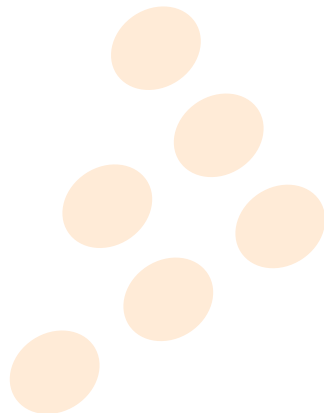
Serial number, 21

Shift, 10

Source, 10, 16

Turntables / CD, 10, 16

Update, 21



# Contact

- For all technical or sales information, please contact your local reseller or MixVibes directly:

MixVibes

4, rue de la Sablière

92230 Gennevilliers

FRANCE

[www.mixvibes.com](http://www.mixvibes.com)

- Technical support:

- online on our [forum](#)<sup>1</sup>

- Sales Information:

- by email to [sales@mixvibes.com](mailto:sales@mixvibes.com)

Copyright 2011 MixVibes. All rights reserved.

The contents of this guide may change without prior notice. Best efforts have been put forth to insure the accuracy of the contents of this guide. MixVibes is not liable for any errors, typographical or other, contained herein. Except as specifically permitted herein, no portion of the information on this guide may be reproduced in any form or by any means without the prior written permission of MixVibes. Trademarks and trade names displayed on this guide are the property of their respective owners.

MIXVIBES U-MIX CONTROL 2 - User manual 1.5.1

This guide may be updated from time to time. Please check for updates on our [website](#)<sup>2</sup>.

---

<sup>1</sup><http://forum.mixvibes.com>

<sup>2</sup><http://www.mixvibes.com>