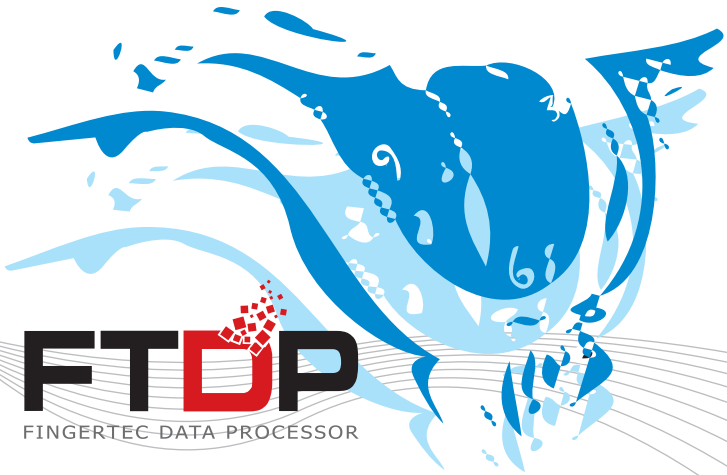


*FINGERTEC*



**FTDP**  
FINGERTEC DATA PROCESSOR

User Guide ▶ Version 1.0.0.1

# CONTENTS

## Part 1 : FTDP User Guide (General)

4 Chapter 1 • INTRODUCTION

5 Chapter 2 • INSTALLATION

6 Chapter 3 • TERMINAL MANAGEMENT

Adding FingerTec Terminals

▶ Via TCP/IP Connection

▶ Via RS232/RS485 Connection

▶ Via URL

Configuring Terminals

Deleting a Terminal

8 Chapter 4 • USER MANAGEMENT

Downloading Users from the Terminal

Uploading Users to Terminal

Deleting Users from the Terminal or Software

Adding Users Manually into the Software

Exporting User Information

12 Chapter 5 • ACCESS CONTROL

Time Zones & Group Time Zones

▶ Valid Time Zones

▶ Group Time Zones

Different Verification Methods

Reviewing Users' Time Zone

15 Chapter 6 • TRANSACTION MANAGEMENT

Downloading Transaction Logs from the Terminals

Searching for Transaction Logs

Exporting Transaction Logs

## Part 2: FTDP for Home Users

16 Chapter 7 • FTDP for Home Users

18 INFORMATION ABOUT FINGERTEC

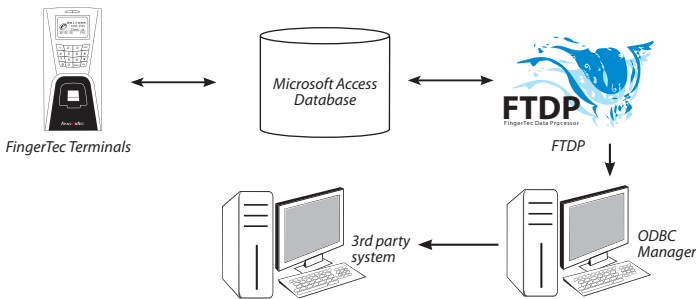
# Part 1 : FTDP User Guide (General)

## 1 • INTRODUCTION

The FingerTec Data Processor (FTDP) is a basic software designed to interact with all FingerTec terminals. The FTDP was developed to help ease the system integrator or software developer's job of fully integrating their FingerTec terminals with their company's existing systems.

The FTDP software's main functions are:

- ▶ Downloading / uploading user information from/to terminals
- ▶ Downloading transaction logs from terminals
- ▶ Configuring settings of terminals
- ▶ Exporting user information and transaction logs into various file formats for input into a 3rd party system
- ▶ Storing data into a Microsoft Access database as a centralized database which is accessible by using the ODBC Manager



Previously a system integrator or software developer had to use the BioBridge SDK (Software Development Kit) to develop their own solutions or software to obtain data from FingerTec terminals. " Previously, a system integrator or software developer would have to use the BioBridge SDK (Software Development Kit) to develop their own solutions or software to obtain data from FingerTec terminals. With the FTDP, you will be able to perform the basic functions such as adding/deleting users, as well as able to export the raw data out of the terminal, to be processed by a third party software of your choice. In short, the FTDP is a basic version of the TCMS v2 and the BioBridge SDK combined.

Software developers can now integrate the information and transaction logs from the via Microsoft Access to build up or customize a total solution for users"

## 2 • INSTALLATION

Follow these steps to install the FTDP in your PC successfully.

- ▶ Double click on the “FingerTec Data Processor.exe” icon to run the installation file.
- ▶ The installation process will initialize automatically. Click **Next**.
- ▶ Read and understand the license agreement and select “I accept the terms in the license agreement”. Click **Next** to proceed.
- ▶ Click **Next** to install the software into the recommended path. Click **Change** if you wish to specify the location to install the program.
- ▶ Click **Install** to proceed. Wait while the installation process completes.
- ▶ Click **Finish** when the process is completed.
- ▶ A new icon labeled “FingerTec Data Processor” will be displayed on the desktop.

Double click the icon to run the software.



A login interface prompt will request a password when you try to run the FTDP. The default password is 123. Insert the password and click **Login** to enter the FTDP.

### 3 • TERMINAL MANAGEMENT

To enter the terminal management page, click on **Terminal**. You can add, edit, and delete terminals from this page.

## Adding FingerTec Terminals

### VIA TCP/IP CONNECTION

**To Add:** Click **Add** > Insert the terminal's IP address > Check that "Port No." value is 4370 > Check that "COMM Key" value is 0 > Assign a name to the terminal > Click **Connect** to start connection.

● **Connection by serial port: RS232/RS485**

*Click on the Comm check box if you are connecting to a terminal via the RS232 or RS485 wires.*

The screenshot shows the Terminal Management window with the 'Comm' radio button selected. The 'Comm Port' is set to 1, 'BaudRate' is 115200, and 'Comm Key' is 0. The 'Connect' button is visible. The table below shows existing terminals.

DevID	IP	Desc	SN	Model	Port	FW	CommKey	DNS
1	192.168.1.223	Main Door Terminal	8203802	R2	4370	Ver 6.18 Jul 28 2009	0	208.67.222.222
5	192.168.1.253		1001839	AC-801	4370	Ver 5.11 Jan 12 2006	0	208.67.222.222

### VIA RS232/RS485 CONNECTION

**To Add:** Define the Comm Port > Define the Baud Rate > Check that "COMM Key" value is 0 > Assign a name to the terminal > Click **Connect** to start connection.

● **Connection by URL**

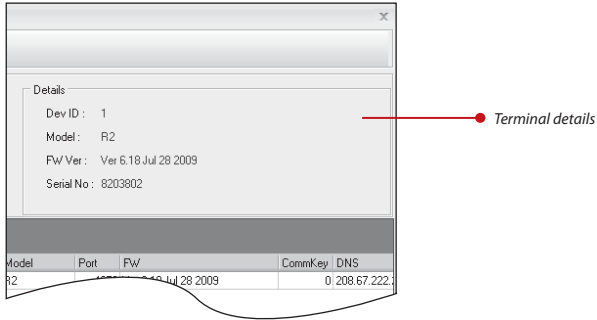
*You can click on URL if you are connecting to the terminal via the Internet.*

The screenshot shows the Terminal Management window with the 'URL' radio button selected. The 'URL' field is empty, 'Port No.' is 4370, and 'Comm Key' is 0. The 'Connect' button is visible. The table below shows existing terminals.

DevID	IP	Desc	SN	Model	Port	FW	CommKey	DNS
1	192.168.1.223	Main Door Terminal	8203802	R2	4370	Ver 6.18 Jul 28 2009	0	208.67.222.222
5	192.168.1.253		1001839	AC-801	4370	Ver 5.11 Jan 12 2006	0	208.67.222.222

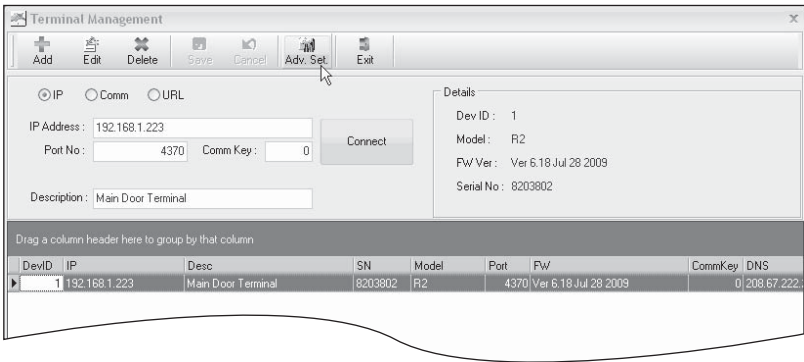
## VIA URL

**To Add:** Define the URL > Check that “Port No.” value is 4370 > Check that “COMM Key” value is 0 > Define the “DNS” > Assign a name to the terminal > Click **Connect** to start connection > Check for the correct terminal details > Click **Save**.



## Configuring Terminals

The FTDP enables you to configure the settings in a terminal via the software.



**To Configure Settings:** Click **Advance Settings** > Click **Get Settings** > Define settings (Refer to TCMS v2.2 manual, page 15) > Click **Set Settings** to upload settings to terminal.

## Deleting a Terminal

Deleting a terminal from the FTDP is simple. Just select the terminal you wish to delete and click **Delete**.

## 4 • USER MANAGEMENT

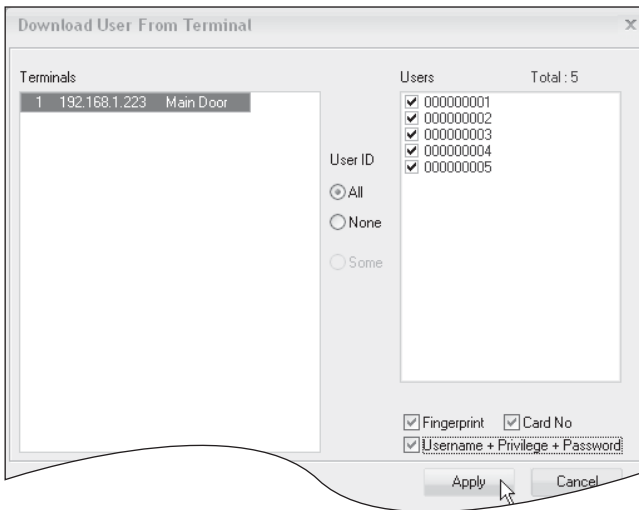
FTDP can also be used to manage user information (e.g. fingerprint templates, password, Card ID, names, etc).

User data needs to be downloaded from the terminals and saved into the software before being uploaded into other terminals (if any) without having to re-enroll the users.

Alternatively, you can opt to use an OFIS scanner to do enrollment through this page. Enrollment can be done using the OFIS scanner without requiring users to enroll at the terminal(s). The same applies to users who enroll using passwords or cards as their verification method. Enrollment of password or card can be done through the software, by inserting the Card ID or the passwords. You can also delete users directly from any of the terminals through this software (refer to section 4.5).

### Downloading Users from the Terminal

**To Download User:** Click **Users** > Click **Download** > A pop-up window will appear > Double click the IP address /name of the terminal to upload to > Select user IDs to download or click "All" to select all users > Click on the data fields to be downloaded > Click **Apply** to start download.



All users are now downloaded into the software, and their basic information is displayed on the screen. You can insert the User Name (users' short names to display on terminal during verification, max 9 characters) and Name (users' full names). You can opt to insert passwords for users as their alternative verification to the terminal (max 5 digits for normal terminals, 8 digits for color screen). You can also insert the Card ID into the Card No column to register a user for card verification. You will have to upload the new settings to the terminal(s) for it to take effect.

**To Edit User:** Select user > click **Edit** > Insert information > Click **Save** when done.

## Uploading Users to Terminal

**To Upload Users to Terminal:** Click **Upload** > A pop-up window will appear > Double click the IP address /name of the terminal to upload to > Select user IDs to download or click "All" to select all users > Click on the data fields to be downloaded > Click **Apply** to start download.

## Deleting Users from the Terminal or Software

There are 2 methods that you can use to delete users:

**Deleting from the terminal** - Deleting users from any of the terminals would delete the users' information that is available in the terminal(s) ONLY but the information in the software is still intact for future use.

**Deleting from the software** - Deleting users from the software is risky because once the deletion is performed; the user information is not available anymore for future download. However, the user information available in the reader will not be affected unless the software is connected to the terminals and the changes are updated after the deletion is done. Be very sure before performing deletion of users from the software.

If you would like to delete users completely from the software as well as the terminal(s), you will have to:

**Step 1** ▶ Delete the user(s) from all terminals.

**Step 2** ▶ Delete the user(s) from the software.

**To Delete Users from All Terminals:** Click **Delete Users** > Select **Delete Terminal User** > A pop-up window will appear > Double click terminals to select > Select the user IDs to delete or select "All Users" to delete all users > Check data fields to be deleted > Click **Apply** to start deleting.

**To Delete Users from the Software:** Click **Delete Users** > Select **Delete Local (PC) User** > A pop-up window will appear > Ignore the "Terminal" column > Select the user IDs to delete or select "All Users" to delete all users > Check data fields to be deleted > Click **Apply** to start deleting.



# Adding Users Manually into the Software

With this function you can add users manually through the software, and upload it to any terminal(s).

**To Add Users via Software:** Click **Add User (PC)** > Insert the relevant information > Privilege : "User"(refer to terminal manual) > VerType : FP/PW/RF > (Fingerprint, Password, RFID Card) Select **Valid checkbox** > Click **Save** when done.

A new user is now created. This user, however, does not have a fingerprint enrolled into the software yet. You can enroll the user's fingerprint at a terminal, or by using a FingerTec OFIS scanner.

**To Enroll Fingerprint with OFIS Scanner:** Plug scanner into PC > Select user ID to enroll > Click **Enroll FP** > Click **Enroll New** > Click a finger that is to be enrolled > Place the finger on the scanner 4 times, as instructed by software > Click **OK** > Click Enroll New to enroll another finger or **Exit** to end the process.

Now the user's completed information with the fingerprint template can be uploaded to a terminal for future verification.

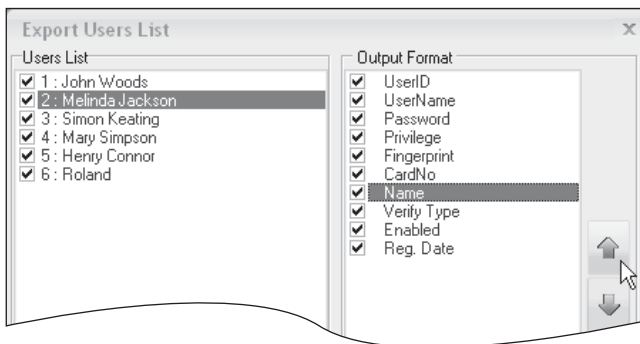
## Exporting User Information

The FTDP allows you to export user information into 4 different file formats: .txt; .xls; .xml; and .html. The exported file can then be imported into a 3rd party software or system.

**To Export User Information:** Click **Export** > Select users to export (right click and click on **select all** to select all users) > Arrange output details as wished (refer to 'note 1' below) > Select the output file format > Click '.....' to define the location of the export file > Click **Export** > Click **OK** to finish.

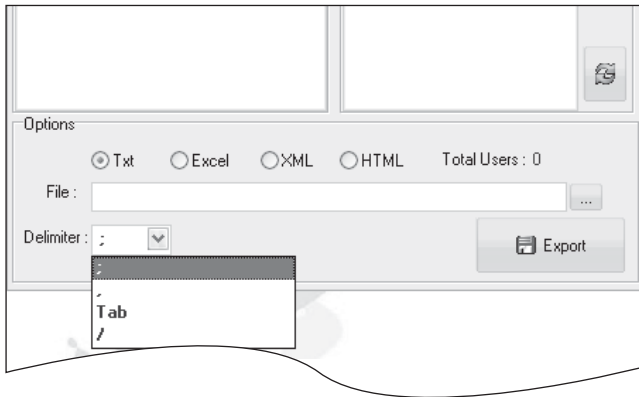
### ► Note 1

FTDP allows you to customize the arrangement of the output file format. For example, if you would like the Name to appear in the first column, select "Name" and click the UP arrow repeatedly until it moves to the top of the list.



► **Note 2**

If you are going to export using the txt file format, you can select the delimiter by [, ], [TAB] or [/]. The delimiter acts to separate every data field.



## 5 • ACCESS CONTROL

This chapter discusses everything about configuring various forms of access control for users. The FTDP software has a few methods for tightening security to restricted areas of a workplace. The first is through Time Zones & Group Time Zones, the second is through Different Verification Method.

*\*\*This chapter only applies to terminals with an access control feature. Kindly skip this section if your terminal does not come with this feature.*

### Time Zones & Group Time Zones

The FTDP allows you to assign time zones to the terminals, to restrict users' access during specific time periods. There are two types of time zone features:

- ▶ Valid Time Zone (time period for users to gain access)
- ▶ Group Time Zone (to support more users if they are within the same time zone).

#### VALID TIME ZONES

**To Configure Time Zones:** Click **Access Control** > "Time Zone" tab > Select a Terminal ID for time zone setting > Select a time zone to configure (refer to 'note 1') > Click **Edit** > Configure a time zone for everyday of the week (refer to 'note 2') > Click **Save** to save settings > Click **Yes** to upload settings to terminal > Click **Apply** to start upload (check the terminal ID number) > Click **Close** to finish.

Time Zone	SUN	MON	TUE	WED	THUR	FRI	SAT
1	23:59 00:00	10:00 16:00	10:00 16:00	10:00 16:00	10:00 16:00	10:00 16:00	23:59 00:00
2	00:00 23:59	00:00 23:59	00:00 23:59	00:00 23:59	00:00 23:59	00:00 23:59	00:00 23:59
3	00:00 23:59	00:00 23:59	00:00 23:59	00:00 23:59	00:00 23:59	00:00 23:59	00:00 23:59
4	00:00 23:59	00:00 23:59	00:00 23:59	00:00 23:59	00:00 23:59	00:00 23:59	00:00 23:59
5	00:00 23:59	00:00 23:59	00:00 23:59	00:00 23:59	00:00 23:59	00:00 23:59	00:00 23:59
6	00:00 23:59	00:00 23:59	00:00 23:59	00:00 23:59	00:00 23:59	00:00 23:59	00:00 23:59
7	00:00 23:59	00:00 23:59	00:00 23:59	00:00 23:59	00:00 23:59	00:00 23:59	00:00 23:59
8	00:00 23:59	00:00 23:59	00:00 23:59	00:00 23:59	00:00 23:59	00:00 23:59	00:00 23:59
9	00:00 23:59	00:00 23:59	00:00 23:59	00:00 23:59	00:00 23:59	00:00 23:59	00:00 23:59
10	00:00 23:59	00:00 23:59	00:00 23:59	00:00 23:59	00:00 23:59	00:00 23:59	00:00 23:59
11	00:00 23:59	00:00 23:59	00:00 23:59	00:00 23:59	00:00 23:59	00:00 23:59	00:00 23:59
12	00:00 23:59	00:00 23:59	00:00 23:59	00:00 23:59	00:00 23:59	00:00 23:59	00:00 23:59
13	00:00 23:59	00:00 23:59	00:00 23:59	00:00 23:59	00:00 23:59	00:00 23:59	00:00 23:59
14	00:00 23:59	00:00 23:59	00:00 23:59	00:00 23:59	00:00 23:59	00:00 23:59	00:00 23:59
15	00:00 23:59	00:00 23:59	00:00 23:59	00:00 23:59	00:00 23:59	00:00 23:59	00:00 23:59
16	00:00 23:59	00:00 23:59	00:00 23:59	00:00 23:59	00:00 23:59	00:00 23:59	00:00 23:59
17	00:00 23:59	00:00 23:59	00:00 23:59	00:00 23:59	00:00 23:59	00:00 23:59	00:00 23:59
18	00:00 23:59	00:00 23:59	00:00 23:59	00:00 23:59	00:00 23:59	00:00 23:59	00:00 23:59
19	00:00 23:59	00:00 23:59	00:00 23:59	00:00 23:59	00:00 23:59	00:00 23:59	00:00 23:59
20	00:00 23:59	00:00 23:59	00:00 23:59	00:00 23:59	00:00 23:59	00:00 23:59	00:00 23:59
21	00:00 23:59	00:00 23:59	00:00 23:59	00:00 23:59	00:00 23:59	00:00 23:59	00:00 23:59

▶ **Note 1**

Do NOT select time zone 1 as it is the default time zone for new users that will be enrolled.

► **Note 2**

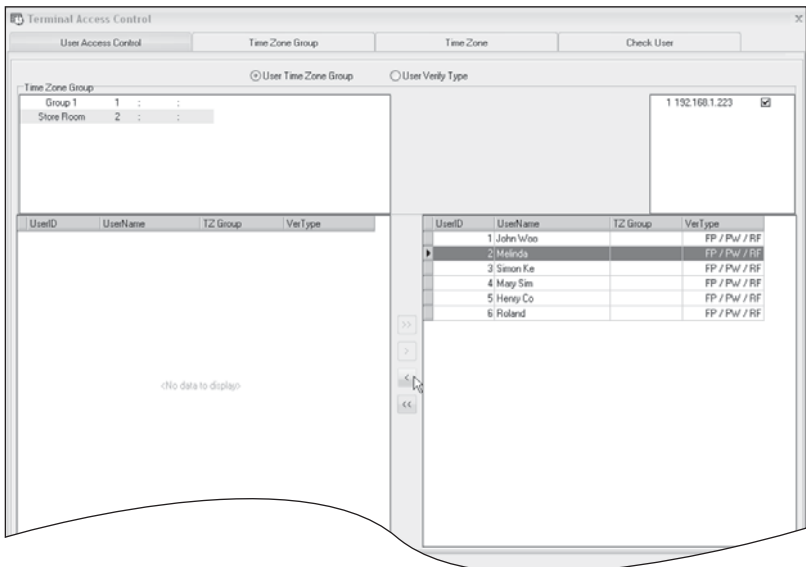
Time Zone 2 - Example of Time Zone setting:

DAYS	TIME PERIOD	FUNCTIONS
Sunday	23:59 – 00:00	No access
Monday	10:00 – 16:00	Only can access from 10:00am to 4:00pm
Tuesday	10:00 – 16:00	Only can access from 10:00am to 4:00pm
Wednesday	10:00 – 16:00	Only can access from 10:00am to 4:00pm
Thursday	10:00 – 16:00	Only can access from 10:00am to 4:00pm
Friday	10:00 – 16:00	Only can access from 10:00am to 4:00pm
Saturday	23:59 – 00:00	No access

**GROUP TIME ZONES**

**To Configure Group Time Zones:** Select **Time Zone Group** tab > Click **Add** > Insert name of group time zone > Inset time zone schedule (e.g. Time Zone 2) > Click **Save** > Click **Update Terminal** to send settings to terminal > Check terminal ID and click **Apply** > Click **Close** to finish.

**To Assign User into a Group Time Zone:** Click **User Access Control** tab > Click on the created Group Time Zone (e.g. with Time Zone 2) > Select users to be included in time zone > Click the left arrow to include selected users > Click **Update Terminal** to send settings to terminal > Check terminal ID and click **Apply** > Click **Close** to finish.



## Different Verification Methods

Check with your terminal's hardware user manual or with your FingerTec reseller to make sure that your model comes with the Different Verification Method. Kindly skip this section if your terminal does not come with this feature.

**To Configure Different Verification Methods:** Click **User Access Control tab** > Click **User Verify Type** > Select verification method(s) > Select users for the different verification method > Click the left arrow to include selected users > Click **Update Terminal** to send settings to terminal > Check terminal ID and click **Apply** > Click **Close** to finish.

► **Note**

By default, all users use FP/PW/RF (user verifies by fingerprint, FP; password, PW; or cards, RF).

## REVIEWING USERS' TIME ZONE

You can review the users in a terminal to make sure they are grouped in the correct Time Zone, Group Times and Different Verification Methods.

**To Review Users' Group Settings:** Select **Check User tab** > Select Terminal ID to download user information from > Click **Download Users** > Click **Apply** > Click **Close** to finish.

## 6 • TRANSACTION MANAGEMENT

### Downloading Transaction Logs from the Terminals

To download transaction logs and users' activities, you must first connect to the terminal concerned and then perform the download.

**To Download Transaction Logs from Terminals:** Click on **Transaction** > Click **Download** > Select the terminal ID that you wish to download from > Optional: Click **Delete Terminal Data After Download** to delete the transactions from the terminal ID after the download > Click **Download** > Click **Exit** after the progress bar reaches "100%".

### Searching for Transaction Logs

Certain scenarios will arise where there will be a need to search for specific transaction logs according to date, terminal ID, or user name. To perform this kind of search, follow the steps below.

**To Search for Transaction Logs:** Click on **Transaction** > Click **Search** > Define search criteria by terminal ID, user ID, user name or date > Click **Search**.

### Exporting Transaction Logs

You can export transaction logs into 4 different file formats (.txt, .xls, .xml and .html). The exported file can use as an input to 3rd party software.

**To Export Transaction Logs:** Click **Transaction** > Click **Search** > Define transaction logs by terminal ID, user ID, user name or date > Click **Export** > Arrange output details as wished (refer to note) > Select format for the export file > Define location of export file > Click **Export** > Click **OK** on pop up to finish.

▶ **Note 1**

FTDP allows you to customize the arrangement of the output file format. For example, if you would like the User Name to appear in the first column, select "User Name" and click the UP arrow repeatedly until it moves to the top of the list (*refer to Note 1 diagram in Exporting User Information, Chapter 4*).

▶ **Note 2**

If you are going to export using the txt file format, you can select the delimiter by [, ], [, ], [TAB] or [/]. The delimiter acts to separate every data field (*refer to Note 2 diagram in Exporting User Information, Chapter 4*).

# Part 2: FTDP for Home Users

## 7 • FTDP FOR HOME USERS

### An Introduction

Congratulations! You have chosen to secure your home with FingerTec access control devices. Now that your device is installed and is in its place, it is time to learn how to manage and maintain the device.

The FingerTec Data Processor (FTDP) is a basic software designed to upload and download various information from a FingerTec device without much hassle. The download and upload can be done by a connected LAN cable, or to keep wires at a minimum, a USB flashdisk can also be used to transfer data between the device and the FTDP.

As a home user, there are several important functions that you will need to know and perform as you use your device. To start off, you'll first need to install the FTDP into a computer in your home, and then add your device into the software's database.

For instructions on installing the FTDP, see [page 5](#) of this manual.

### Adding Your Device into the FTDP

To start viewing access records using the FTDP, you will have to add the terminal into the FTDP first.

**To add a terminal via USB flashdisk:** Click **Add** > Select to USB flash disk > Fill in Device ID, Serial number and model > Press Save to save settings.

**To add a terminal via TCP/IP cable:** Click **Add** > Insert the terminal's IP address > Check that "Port No." value is 4370 > Check that "COMM Key" value is 0 > Assign a name to the terminal > Click **Connect** to start the connection.

### Downloading & Viewing Access Records in the FTDP

Now that your terminal is installed and your family members and other users are enrolled into your device (*for user enrollment, refer to your hardware user guide/ quick start guide*), you can now use the FTDP to download access records from your device.

Everytime a user verifies at the reader to enter the premises, a record is kept in the device with information of the time & date of verification, and the user ID that verified at the terminal. To view a history of all the records, you'll have to first download it into the FTDP

*To download access records:* Click on **Transaction** > Click **Download** > Select your device to download from > Optional: Click **Delete Terminal Data After Download** to erase the records after downloading it into the FTDP > Click Download > Click **Exit** when done.

Now you can view all the activity that has been occurring in your FingerTec device. You can also search for specific transaction logs according to date or user name, using the steps illustrated below.

**To search for records:** Click Transaction > Click Search > Define search criteria by user ID, user name, or date > Click Search.

## Erasing Access Records in Your Device

Each FingerTec device comes with a maximum memory limit for storing the access records. To make sure that there is always available memory in the terminal, it is recommended that you delete the access records in your terminal from time to time. The records can be deleted via the FTDP if you are using a TCP/IP connection, or it can be deleted directly in the terminal for those using the USB flashdisk method for communication.

The process of erasing the access records from the device via the FTDP is similar to the process of downloading the access records.

**To erase access records (TCP/IP):** Click on **Transaction** > Click **Download** > Select your device to download from > Click the checkbox **Delete Terminal Data After Download** to erase the records after downloading it into the FTDP > Click **Download** > Click **Exit** when done.



## INFORMATION ABOUT FINGERTEC

TO LEARN ABOUT	GO TO?
Company and the products	<a href="http://www.fingertec.com">www.fingertec.com</a>
The latest updates	Facebook Fan Page: FingerTec Worldwide Twitter: FingerTec Worldwide To subscribe for FingerTec newsletter: <a href="http://info.fingertec.com/subscribenewsletter">info.fingertec.com/subscribenewsletter</a>
Technical Tips and Latest Product Updates and Upgrades	<a href="http://user.fingertec.com">user.fingertec.com</a>
Email	<a href="mailto:info@fingertec.com">info@fingertec.com</a> (Sales) <a href="mailto:support@fingertec.com">support@fingertec.com</a> (Technical)
Register for Warranty	<a href="http://info.fingertec.com/productwarranty">info.fingertec.com/productwarranty</a>
FingerTec Accessory	<a href="http://accessory.fingertec.com">accessory.fingertec.com</a>

## COPYRIGHT NOTICE & DISCLAIMER

### COPYRIGHT NOTICE

All rights reserved. No part of this book may be reproduced or transmitted in any form or by any means, electronic or mechanical, including photocopying, recording, or by any information storage and retrieval system, without written permission from FingerTec Worldwide Sdn Bhd. Every precaution has been made to supply complete and accurate information. Information in this document is subject to change without prior notice.

### DISCLAIMER

No person should rely on the contents of this publication without first obtaining advice from a qualified professional person. The company expressly disclaims all and any liability and responsibility to any terminal or user of this book, in respect of anything, and of the consequences of anything, done by any such person in reliance, whether wholly or partially, upon the whole or any part of the contents of this book.

*FINGERTEC WORLDWIDE SDN BHD*

