




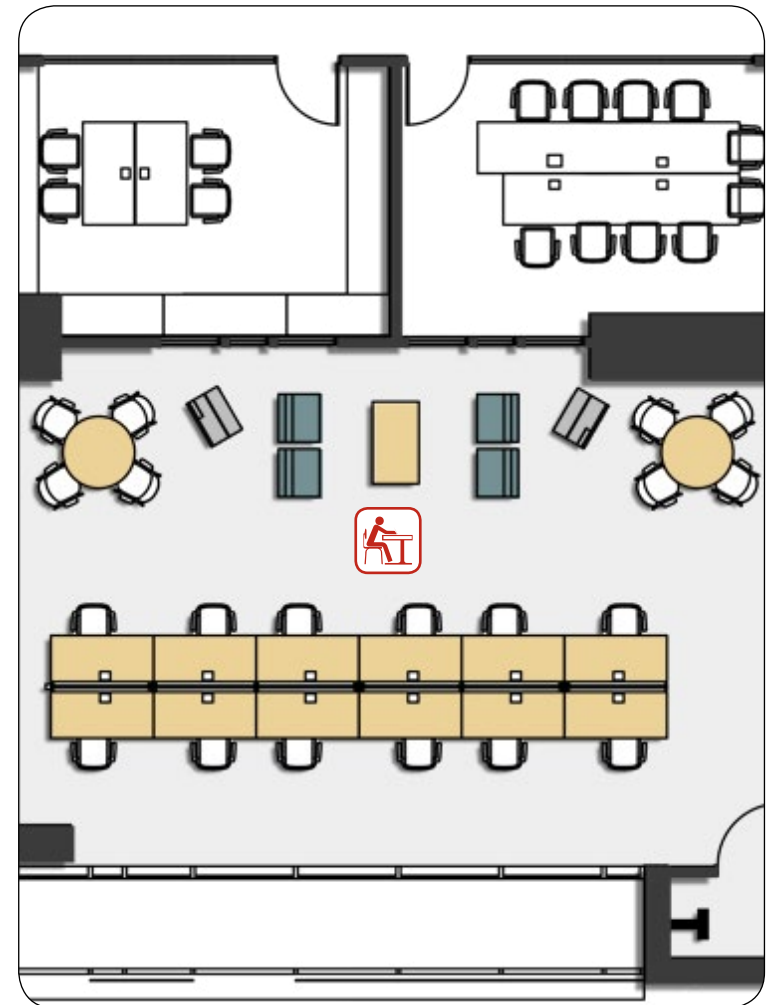
Student Experience

The new SJ Quinney College of Law building offers a number of amenities for students, as well as a number of new sustainable features that you should know about. Here are some of the building features that might impact you:

Student Study Spaces


There are student study areas on the south side of the building. These individual desk areas are located near large expanses of windows to ensure you can see our beautiful Utah landscape while studying.

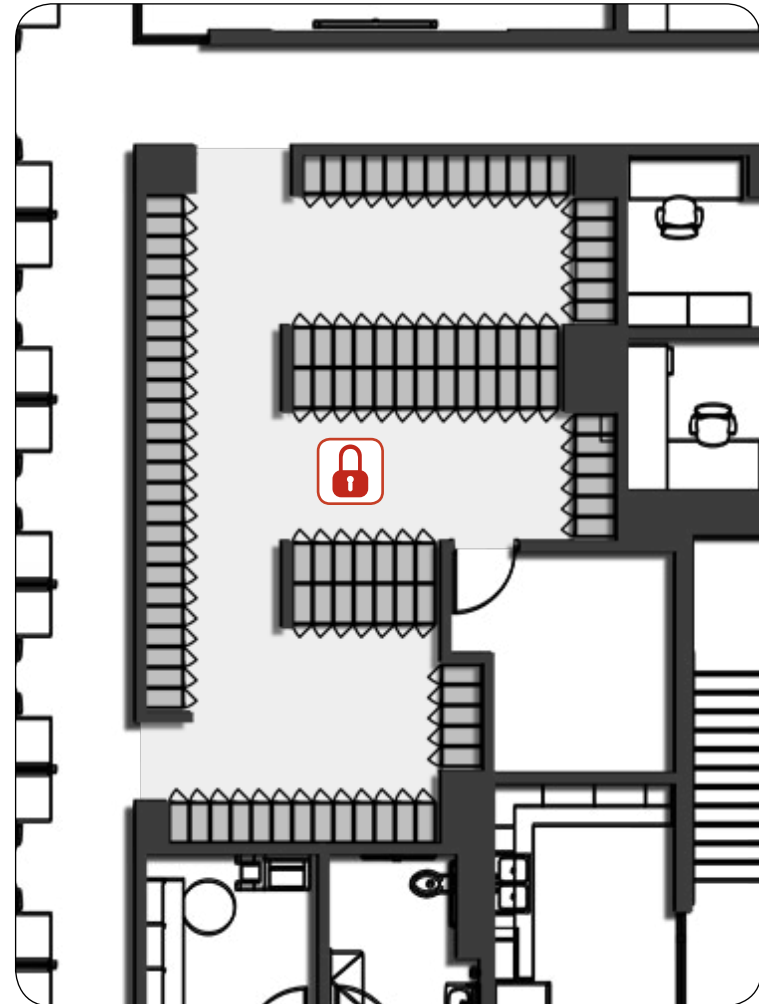
-  To respond to these windows, the lights will be on dimmers to reduce the power used for lighting when daylight is available.
-  You will also have a task light, if you need additional light to do your work. Please remember to turn off your task light when it is not in use.
-  These desks are small and very public, so please be considerate of what you leave out on your desk.



 **Student Lockers**

Secured student lockers are available for self-assignment on level 2. These lockers provide a great place for you to store your interview suit or books.

 These lockers are available on a first-come, first serve basis and are available for your use throughout your time at the Law School. Just remember to bring your own lock.



 **Collaboration Rooms**

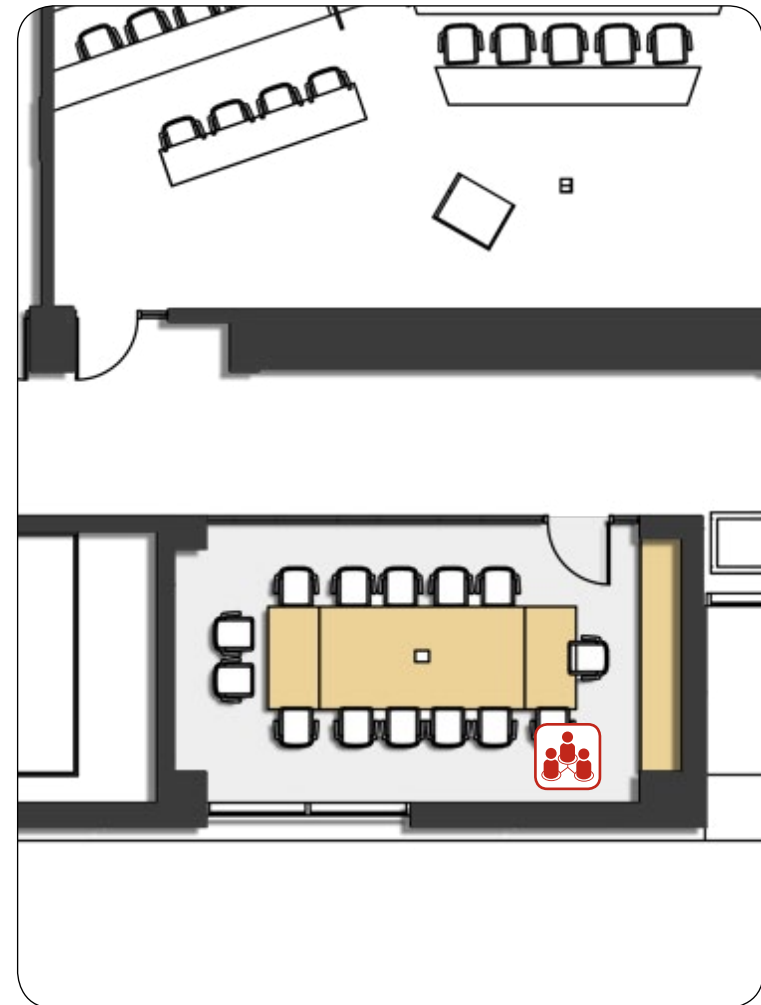
A variety of open collaboration and study rooms are located convenient to the student study areas. These rooms are available to reserve through the room scheduler, available on the College of Law website.



These rooms also have LED lights with different scenes to allow for lights off, presentation mode and lights on.




Please consider the energy used by the lights and choose only the amount of light you need to complete your task. The lights do have a sensor and will automatically turn-off 5 minutes after everyone leaves the space.




 **Classrooms**

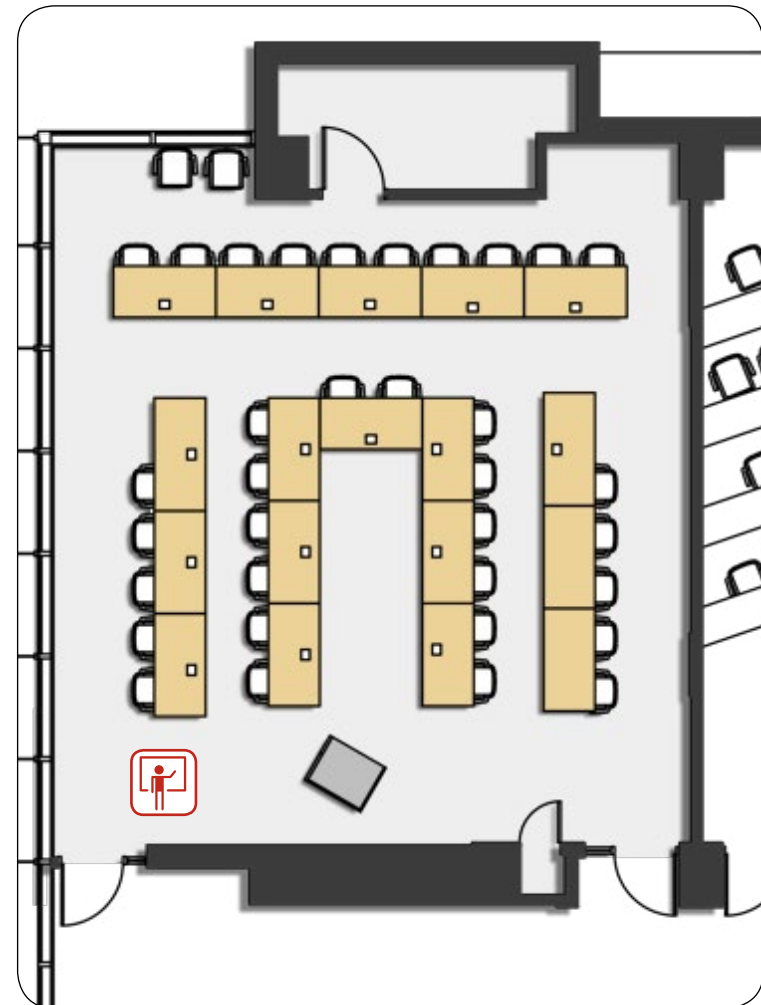
The classrooms have daylight responsive light fixtures that will dim to respond to daylight levels. There are also 5 lighting scenes pre-programmed to meet the ongoing class needs. If you would like to adjust the light fixtures, there are slides to the right of the scene buttons that allow you to dim each section of the lighting individually.

 Please consider the energy used by the lights and choose only the amount of light you need to complete your task. There are also blinds at the windows to allow you to control the amount of daylight that enters the classroom.

There are thermostats in every classroom that allow a range of adjustment to meet your needs. There is also a carbon dioxide sensor that will ensure adequate ventilation is being provided to the space.

 Both the lighting and air delivery systems are tied to occupancy sensors, so if the room is not optimally comfortable when you arrive, please give the system a couple of minutes to ramp up, before you adjust the temperature set points.

A state-of-the-art audiovisual system has been integrated into each classroom and event space.



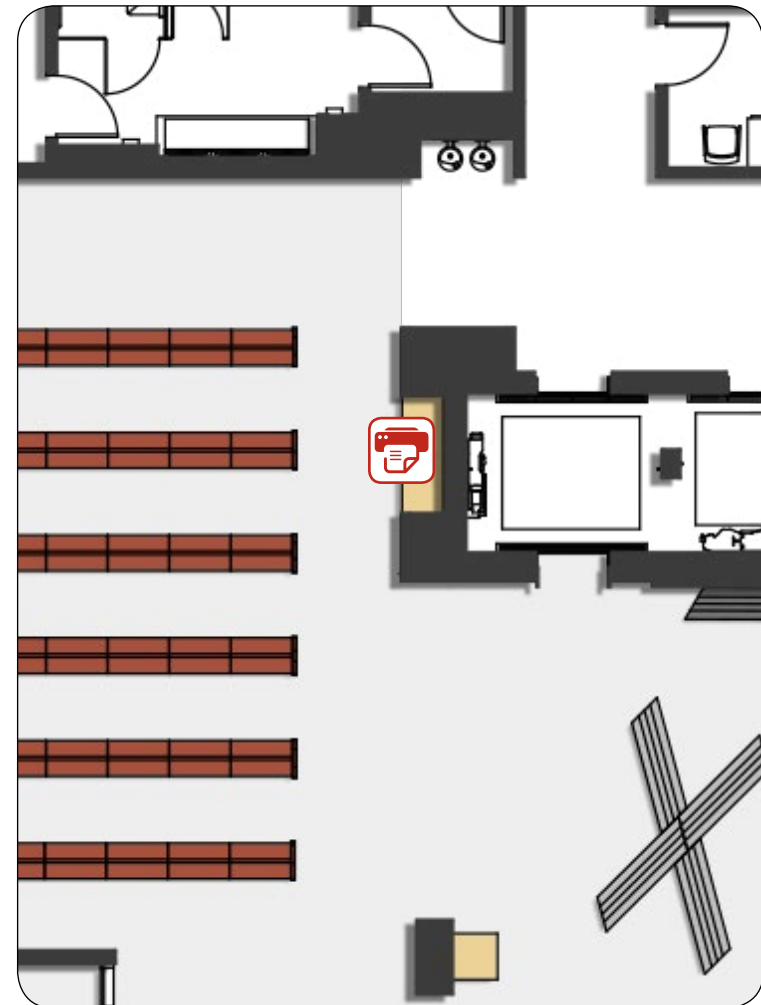
 Law Library

The Law Library is now distributed throughout the law school. There is a general circulation desk located on level 1 with reading rooms on level 1 and 2 for students as well as the general public. Please note that the general public is only allowed on levels 1 and 2. Additional library support is available through the law library website. There are self check out machines at levels 1, 2 and 4. Books can be checked out at the main service desks at level 1 and 2 or at the service desk on levels 3, 4 and 5.




 Copy and Print

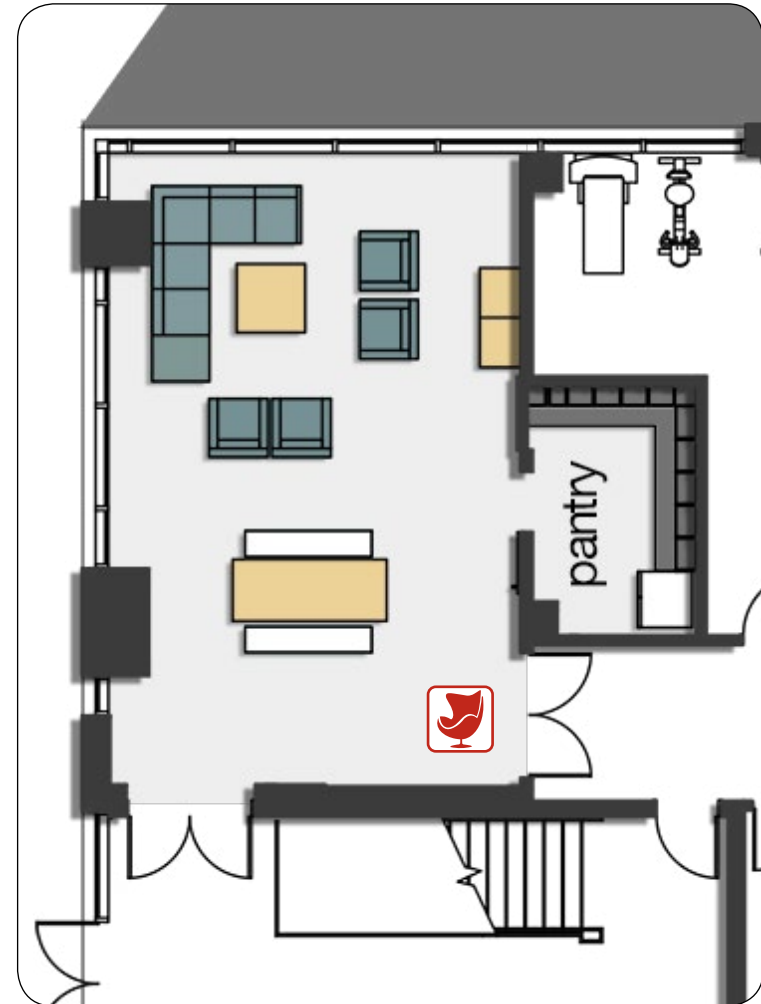
Multi-functional copy / print machines are available for student use adjacent to the self checkout stations located just west of the central elevator core. Faculty printers are located in a central print/copy room near faculty offices and staff have access to printers in staff work areas. There is also a public printer located to the south of the entry vestibule on level 1.



 Student Lounge


A student lounge, located on the northwest corner of level 1, provides a space for students to rest, relax, recharge and eat. There is a food preparation area, soft seating and a game space for students in the lounge. There is also a beautiful outdoor student area adjacent to the lounge.

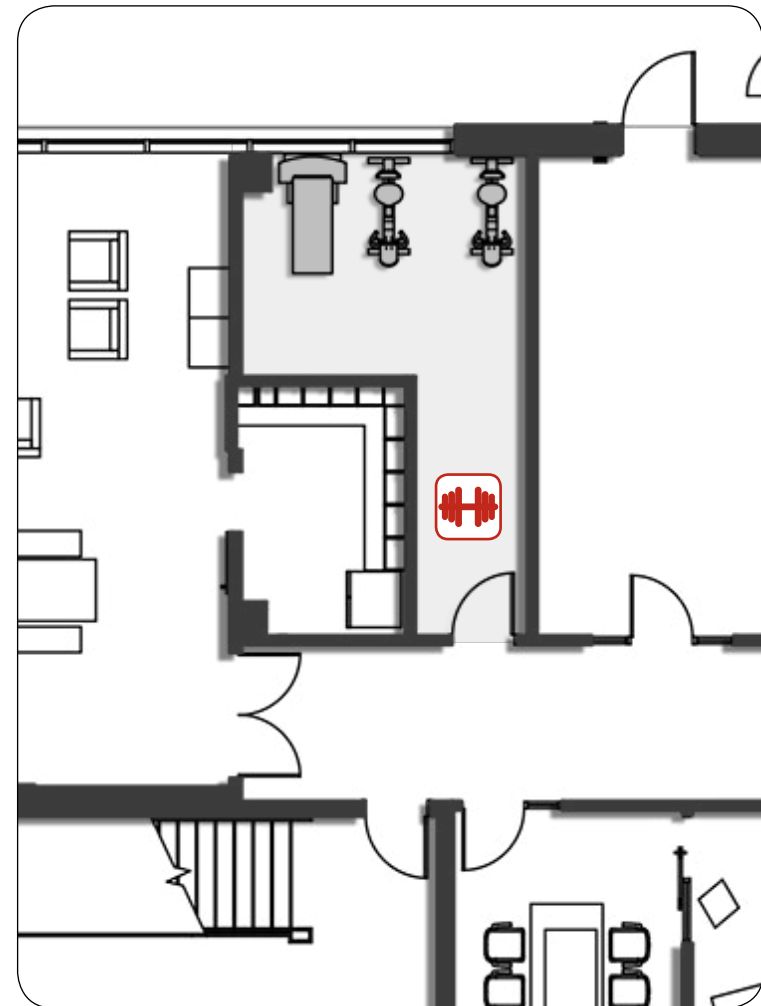
 Take some time to go outside and get some fresh air, after all, going outside makes you happier, healthier, more creative and even reduces stress!



 **Exercise Room**

Directly east of the student lounge is a small exercise area that will have a treadmill and elliptical machine as well as an area to stretch. This area is accessible by card access to building users.

 Move around! Exercise wakes you up, helps reduce stress, and even releases endorphins which will make you even happier.

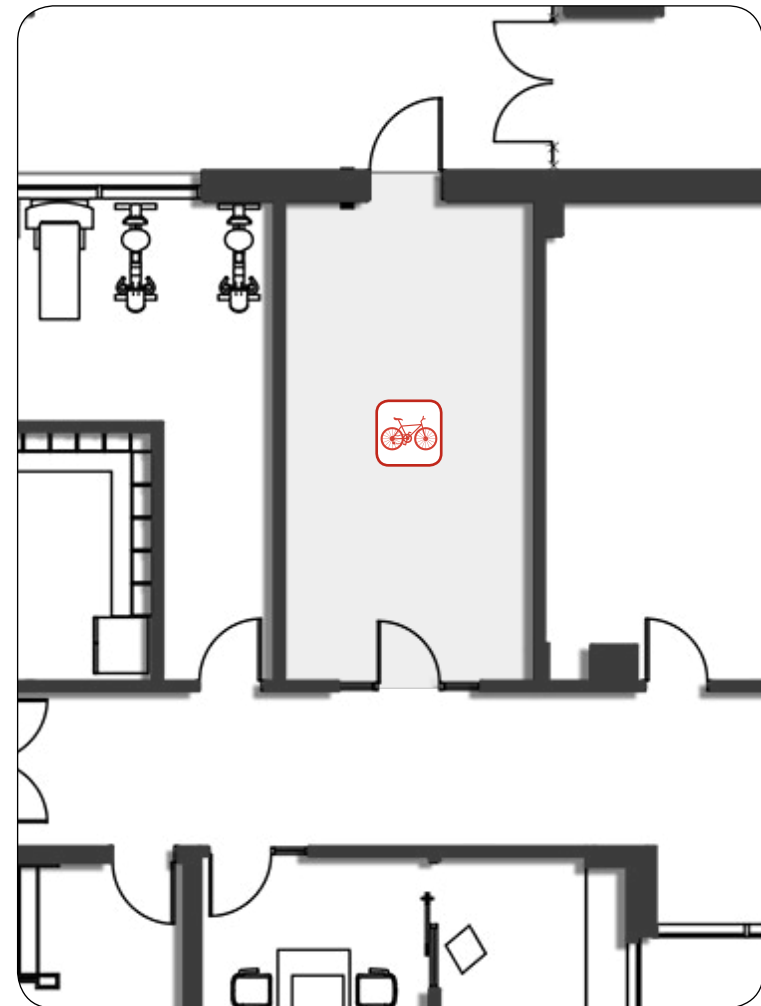


 **Bicycle Storage Room**

A secure bicycle storage room is also available for students, faculty and staff to store bicycles inside the building. This room will be accessible by card access to building users.




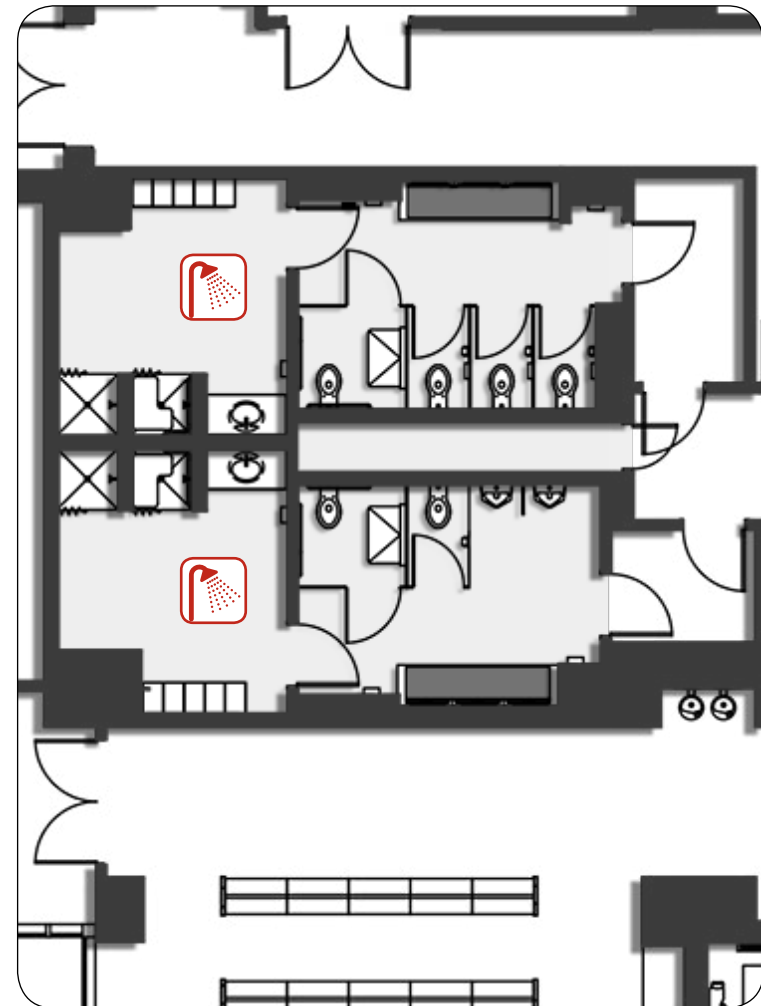
Ride your bike to campus, but please, do not take it to your desk or office.



 Shower and Changing Rooms

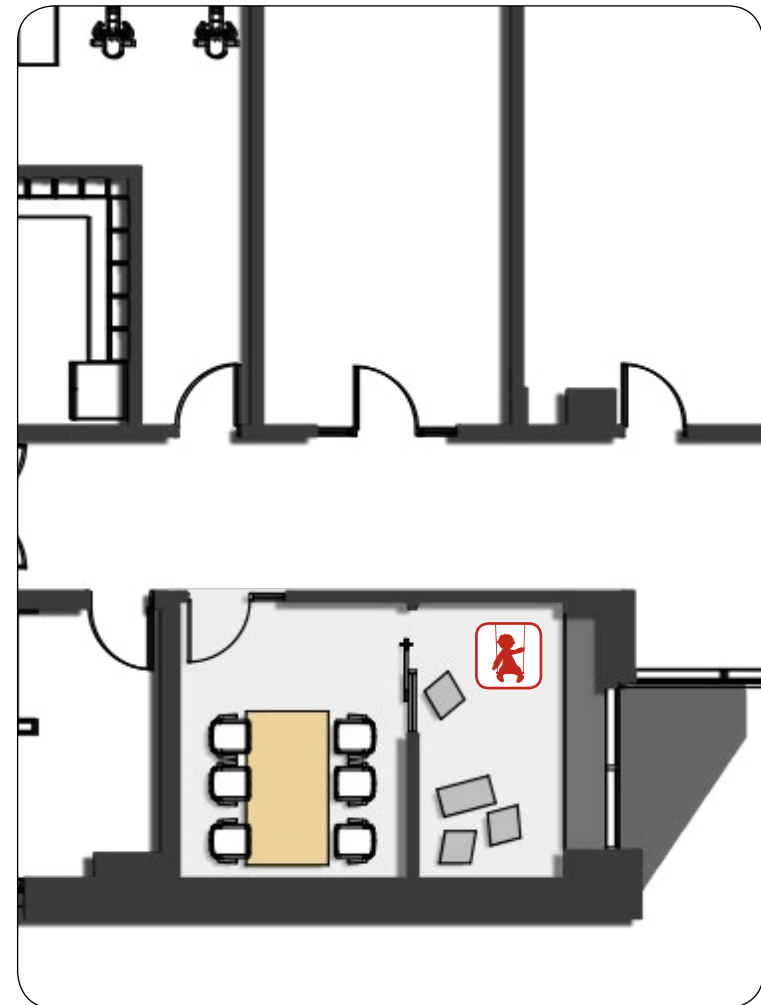
To encourage wellness activities such as bicycle riding and exercise, the new law school building has shower and changing areas near the bicycle storage and exercise rooms. Again, these are accessible to students, faculty and staff of the building.

 Remember to limit your time in the shower both for other users, and to reduce the water waste.




 Child Play Area


Another unique space with the new law school is the child play area. This room allows you to have a small area for your child(ren) to play while you have a meeting, study group or other event within the building. Children playing in this area require supervision, therefore, the play area is located adjacent to and visible from a group study room.





24/7 Building Access

The building is available to students, faculty and staff 24 hours a day, 7 days a week with card access. The building has been designed to be both inviting and secure. Levels 1, 2 and 6 are open and available for public use.

 You will need your access card to access levels 3, 4 and 5 at all times.


 The building systems have been programmed to set back to save energy during off-hours.

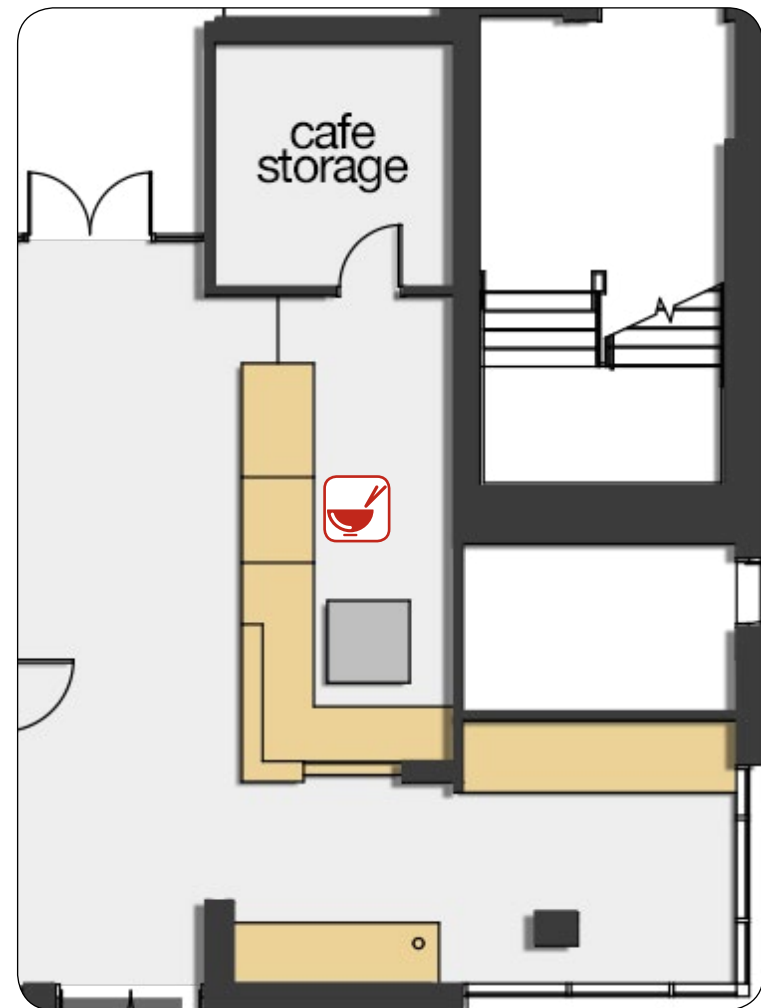
 If you come to work or study in the building in the evenings, over the weekends or breaks you will notice these setbacks. For example, the lighting systems are on occupancy sensors, and only the lights in the area you are working in may be on in the building.

 The air delivery system is also tied to occupancy sensors, so if the room or space you are working in is not optimally comfortable when you arrive, please give the system a couple of minutes to ramp up, before you adjust the temperature set points.

 Green Cafe

The Cafe will be a pilot program on campus, managed by Chartwells, providing enhanced local, fresh and healthy options for the law school and greater campus community. This cafe will offer coffee, grab and go foods and some fresh offerings.








 To reduce waste, remember to bring your own cup, mug and utensils.

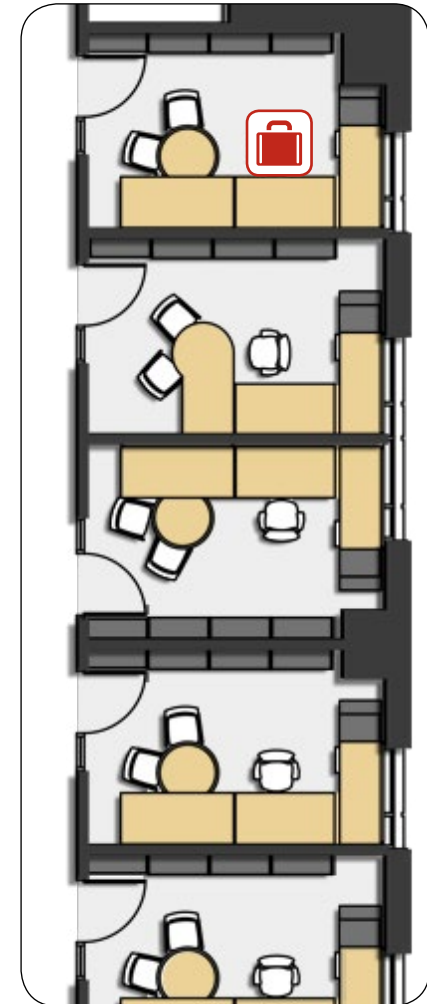


Faculty / Staff Experience

Offices

Offices in the building have a number of new, sustainable features. Each office has an individual thermostat that allows for temperature adjustment within a five degree range. There are also operable windows in each office.

-  In an effort to conserve energy, a sensor on the window is tied to the air delivery system. If the window is open, the mechanical air delivery system will turn off.
-  The lighting system is set to act as a vacancy sensor. This means that you will need to turn on the lights when you enter the room, and if you forget to turn the lights off when you leave, they will automatically turn off after 5 minutes.
-  There are also large windows in most offices. The overhead lighting system has an integrated daylight sensor that will automatically dim the lighting when sufficient daylight is available. Task lighting at your desk is available, should you need additional light at the work surface.
-  Please consider leaving the lights off, unless you need them.
-  Please remember to turn off your task light when you leave your office.
-  The offices are limited in size and storage. Please be considerate of the materials and furniture you bring to your office.
-  Please be considerate of what you plug in. Refrigerators, microwaves and small appliances are not permitted in the offices. Please do not leave chargers and equipment plugged in when not in use.





Copy/Print/Support

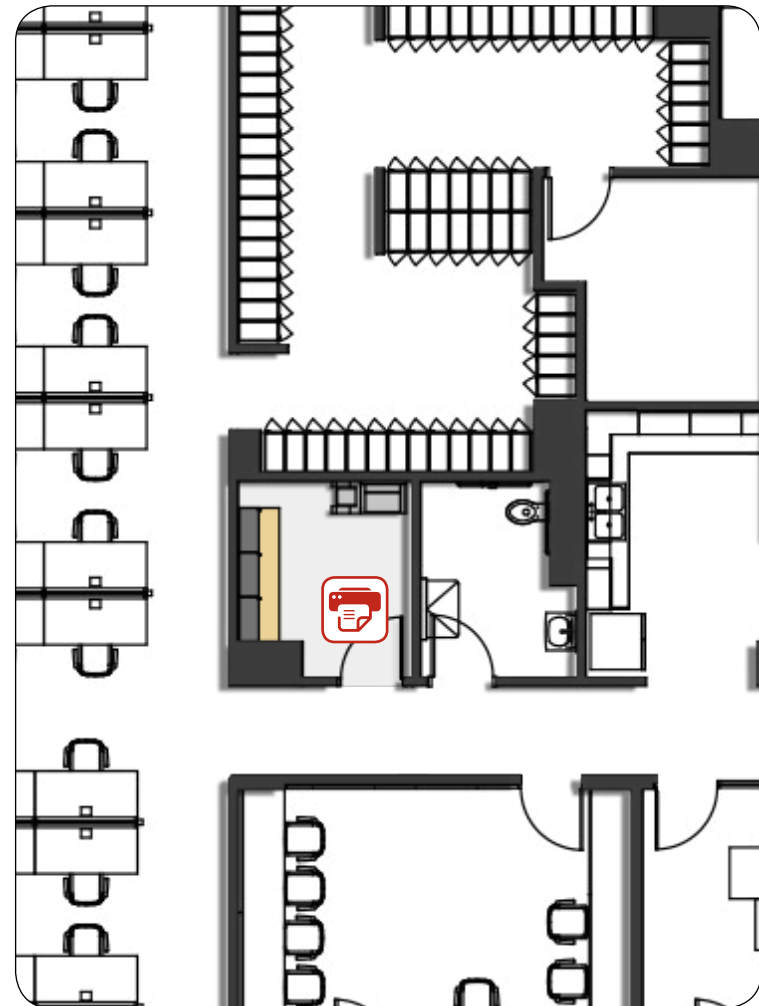
Copy, print and supply storage areas are located on each level, convenient to most offices. These areas will serve the offices on the floor.



To promote a culture of sustainability, please be considerate of the environmental impacts of printing.


If you do send an item to the printer, you will need to input your personal code at the printer to initiate the print job.


Basic office supplies will be stored in the copy and print rooms. If you need supplies that are not available in this space, please see Virginia Beane.





 **Pantry**

There is a pantry conveniently located near the office areas. This pantry will include a refrigerator, microwave, sink and cabinets. There is at least one, if not two pantries on each level.

 The pantries include energy star rated equipment to conserve energy.

 Please store your lunch in the pantry fridge.

 The custodians will be clearing out and cleaning the refrigerators each week, so don't forget to take your leftovers home with you at the end of the week.

 This is both a shared and visible space, so please clean up after yourself. There will be approved green cleaning supplies available in each pantry.



Visitors Experience

Event Spaces

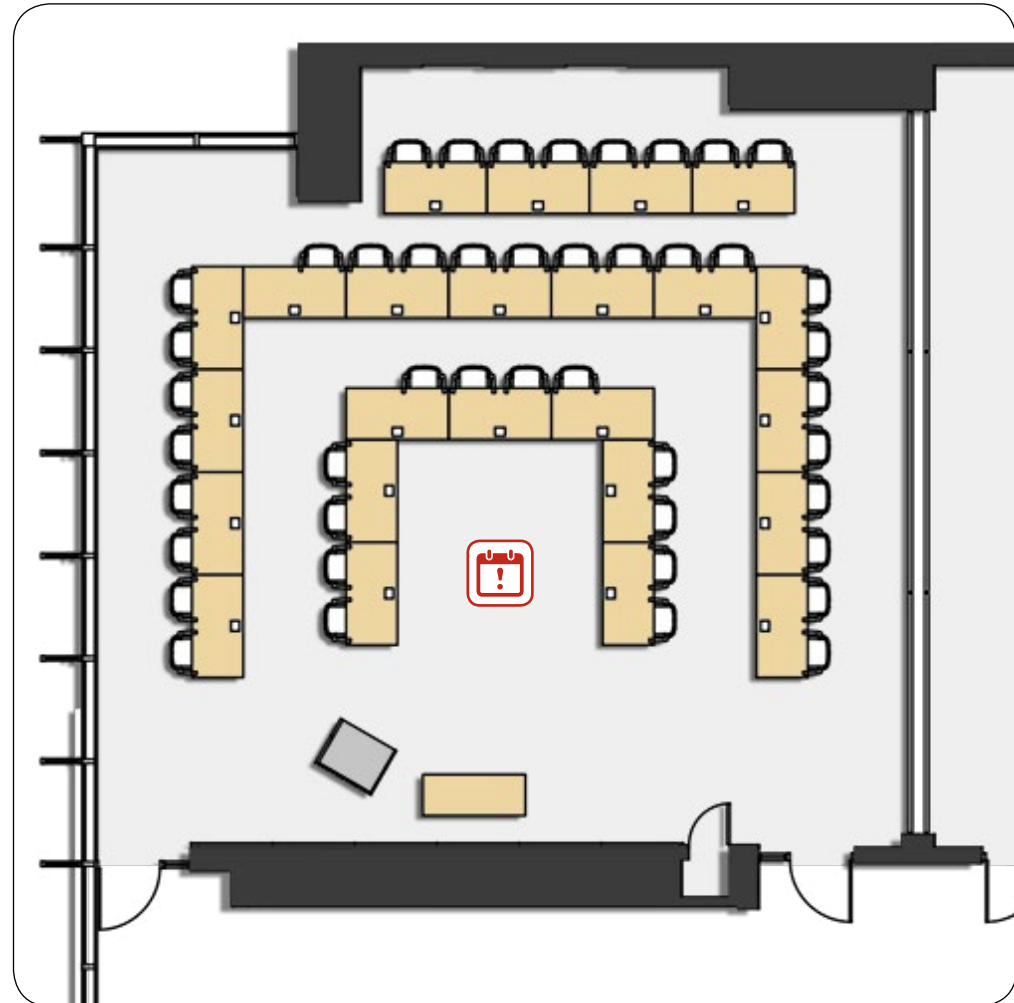
The new S.J. Quinney College of Law building offers state of the art event space to host a range of events. The event spaces are located on the 6th level, accessible from the central stair and elevators. The spaces have been designed with optimal daylight and fully integrated audio/visual equipment. The event spaces are also located adjacent to the outdoor patio that provides an opportunity for a break, surrounded by roof gardens, and spectacular views to the surrounding valley.



Consider taking the stairs rather than the elevator to get some exercise and save energy.



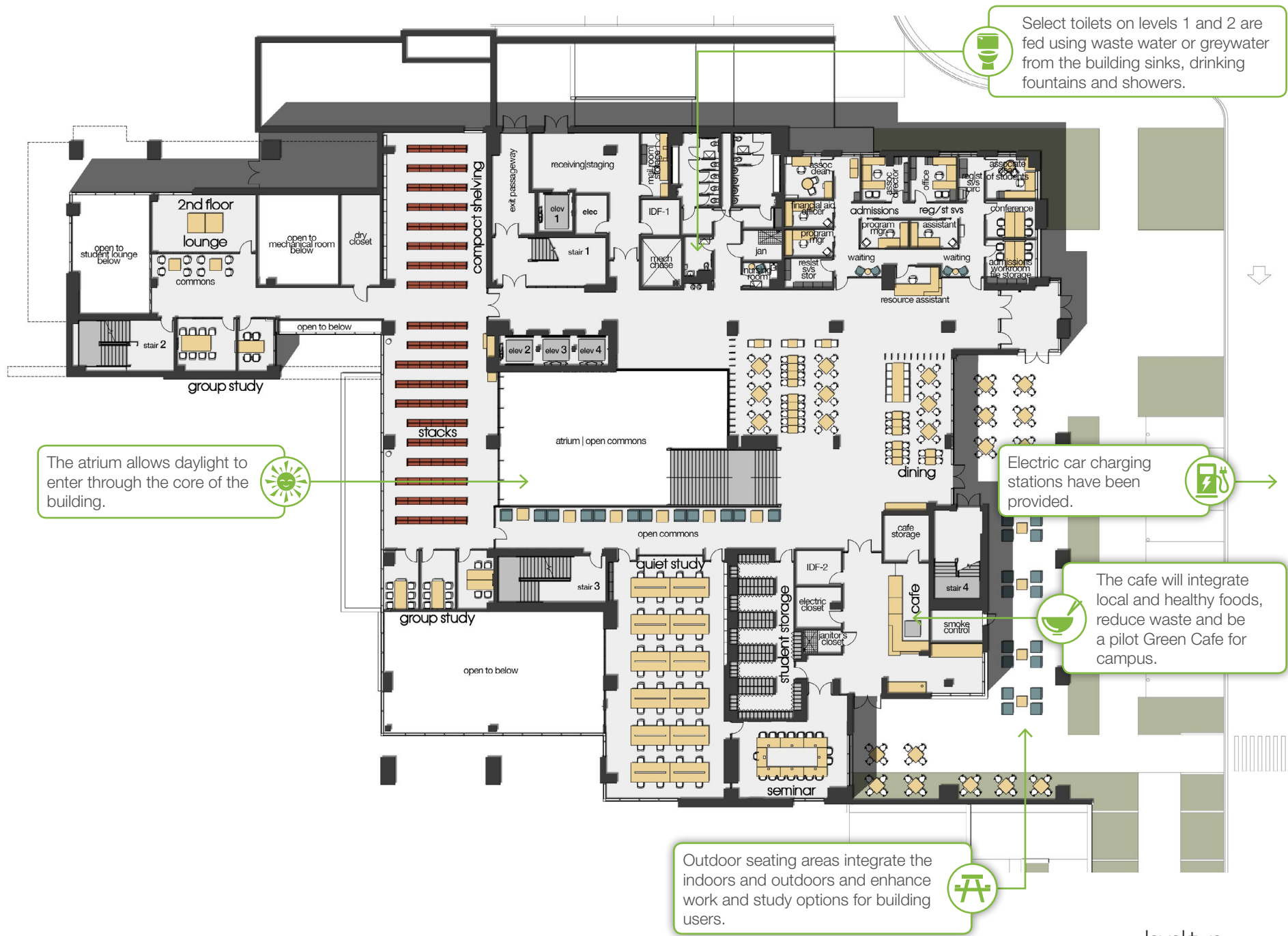
Please consider the energy used by the lights and choose only the amount of light you need to complete your task. There are also blinds at the windows to allow you to control the amount of daylight that enters the classroom.



There are thermostats in every classroom that allow a range of adjustment to meet your needs. There is also a carbon dioxide sensor that will ensure adequate ventilation is being provided to the space.



Both the lighting and air delivery systems are tied to occupancy sensors, so if the room is not optimally comfortable when you arrive, please give the system a couple of minutes to ramp up, before you adjust the temperature set points.



Select toilets on levels 1 and 2 are fed using waste water or greywater from the building sinks, drinking fountains and showers.

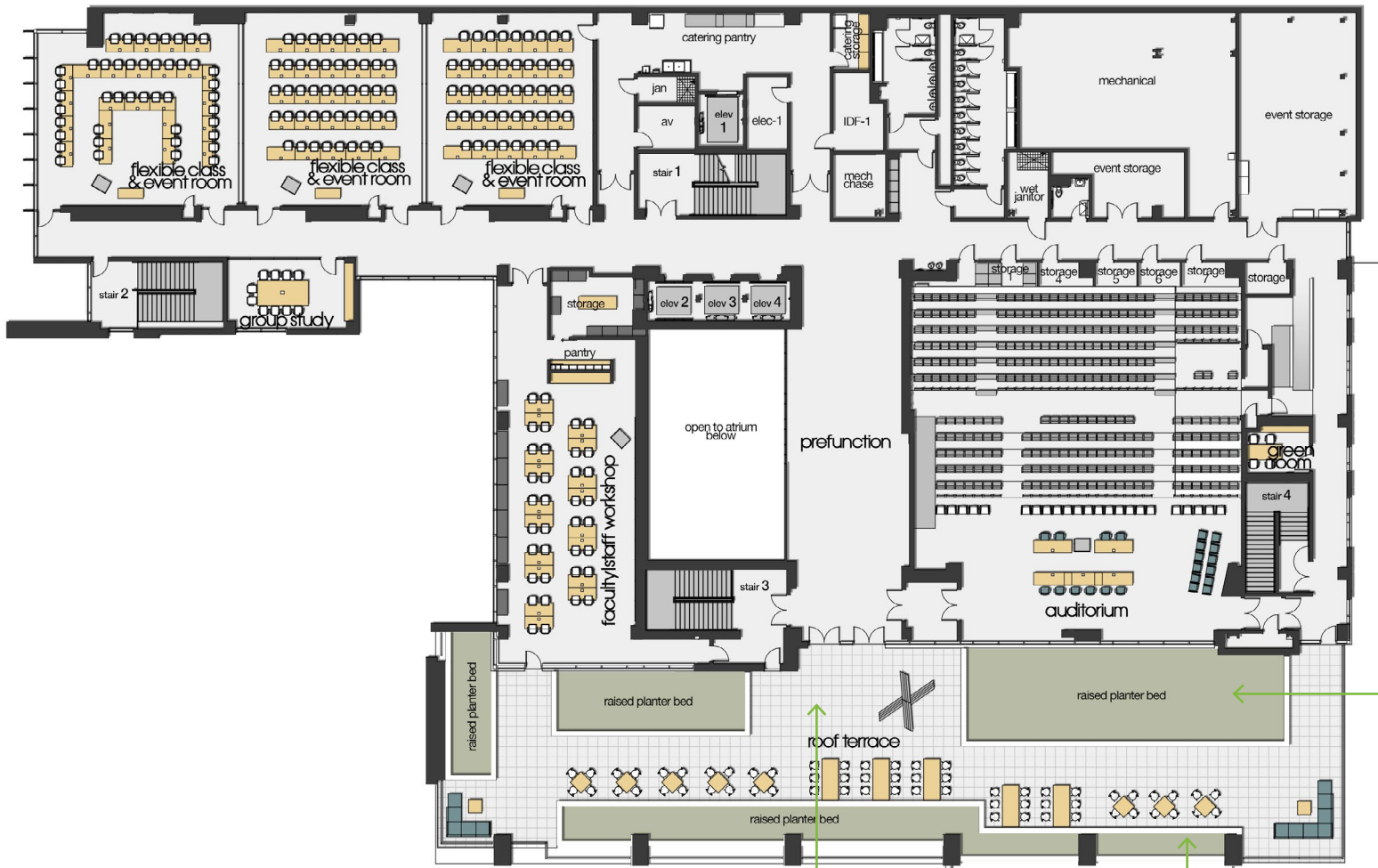
The atrium allows daylight to enter through the core of the building.

Electric car charging stations have been provided.

The cafe will integrate local and healthy foods, reduce waste and be a pilot Green Cafe for campus.

Outdoor seating areas integrate the indoors and outdoors and enhance work and study options for building users.

level two



The green roof reduces the urban heat island effect, or ambient temperature at the roof and provides habitat for local fauna and flora.

The rooftop terrace features a 50 kW building-integrated solar energy generation system.

A featured installation of titanium dioxide infused concrete absorbs nitric oxide (NO_x) from our atmosphere. This installation was built and is being monitored by the Civil Engineering Department at the University of Utah.