

# **GO! Bridge**

**User Manual V1.6**



# Tables of Contents

<b>GO! Bridge Introduction</b>	<b>1</b>
<b>System Requirements</b>	<b>2</b>
<b>Launch GO! Bridge</b>	<b>3</b>
<b>The Overview of Window Mode</b>	<b>4</b>
<b>Window Mode Description</b>	<b>5</b>
Title Bar	6
<b>Device Icon</b>	6
<b>Active Information</b>	6
<b>Option</b>	6
Dock Area	8
File List	8
<b>Open</b>	8
<b>Add to Dock</b>	9
<b>Rename</b>	9
<b>Copy / Paste</b>	10
<b>Delete</b>	11
File Transfer	11
Window Control	12
<b>Minimize</b>	12
<b>Exit GO! Bridge</b>	12
<b>Guider Description</b>	<b>13</b>
Previous File List	13
Next File List	13
View	13
Add Folder	14
View Menu	14
<b>Quick Path Item</b>	14
<b>Disk Item</b>	14
<b>Recent Path Item</b>	14
<b>Icon Mode of the other PC</b>	<b>17</b>

---

# Index

Figure 1 Getting Started Tip of GO! Bridge .....	3
Figure 2 The Exploded View of GO! Bridge.....	4
Figure 3 Window Mode .....	5
Figure 4 The menu of Option on GO! Bridge .....	6
Figure 5 The version of GO! Bridge .....	7
Figure 6 Open Dock .....	7
Figure 7 Edit Files on Dock Area.....	8
Figure 8 The Menu of File List .....	9
Figure 9 Rename the file on the file list.....	10
Figure 10 Copy& Paste the file .....	10
Figure 11 Delete the selected item .....	11
Figure 12 Progress information of the file transfer .....	12
Figure 13 Exit GO! Bridge via the system tray .....	12
Figure 14 Exit the Program via Window Mode .....	13
Figure 15 Guider Description .....	13
Figure 16 Add a New Folder .....	14
Figure 17 View Menu Description.....	15
Figure 18 Icon Mode .....	17

# GO! Bridge Introduction

There are many ways to transfer data, from the disk and tapes in early days to the most popular tool, Flash Drives in present. To use these tools to transfer data could be regarded as to move the goods to the cargo, unload the cargo when the goods are sent to the destination. If your goods are over the loading of the cargo, you have to transfer them in batches.

Data transmission via USB to USB connection which combines high speed transmission and non-technical requirement can solve these two problems of data transmission. Therefore, Oti Inc. innovated GO! Bridge with user friendly and simple operation. Moreover, GO! Bridge improves the data-transmission technology to the next generation.

# System Requirements

- \* Microsoft Windows 2000 SP3/ Win XP 32-bit/ Vista/ Win7 32-bit or 64-bit
- \* Intel® Pentium® II or higher
- \* 512MB RAM or higher
- \* Hard disk space requirement of at least 100 MB
- \* Built-in USB port

# Launch GO! Bridge

When you click on GO! Bridge on the operation panel of GO! Suite, the Getting Started dialog will pop up. If you want to hide it in the future, please mark “**Hide this dialog when starting GO! Bridge**”. Therefore, this dialog won’t appear next time, and vice versa.



Figure 1 Getting Started Tip of GO! Bridge

# The Overview of Window Mode

The figure below displays the Exploded View of GO! Bridge which will make it clear to read the user manual.

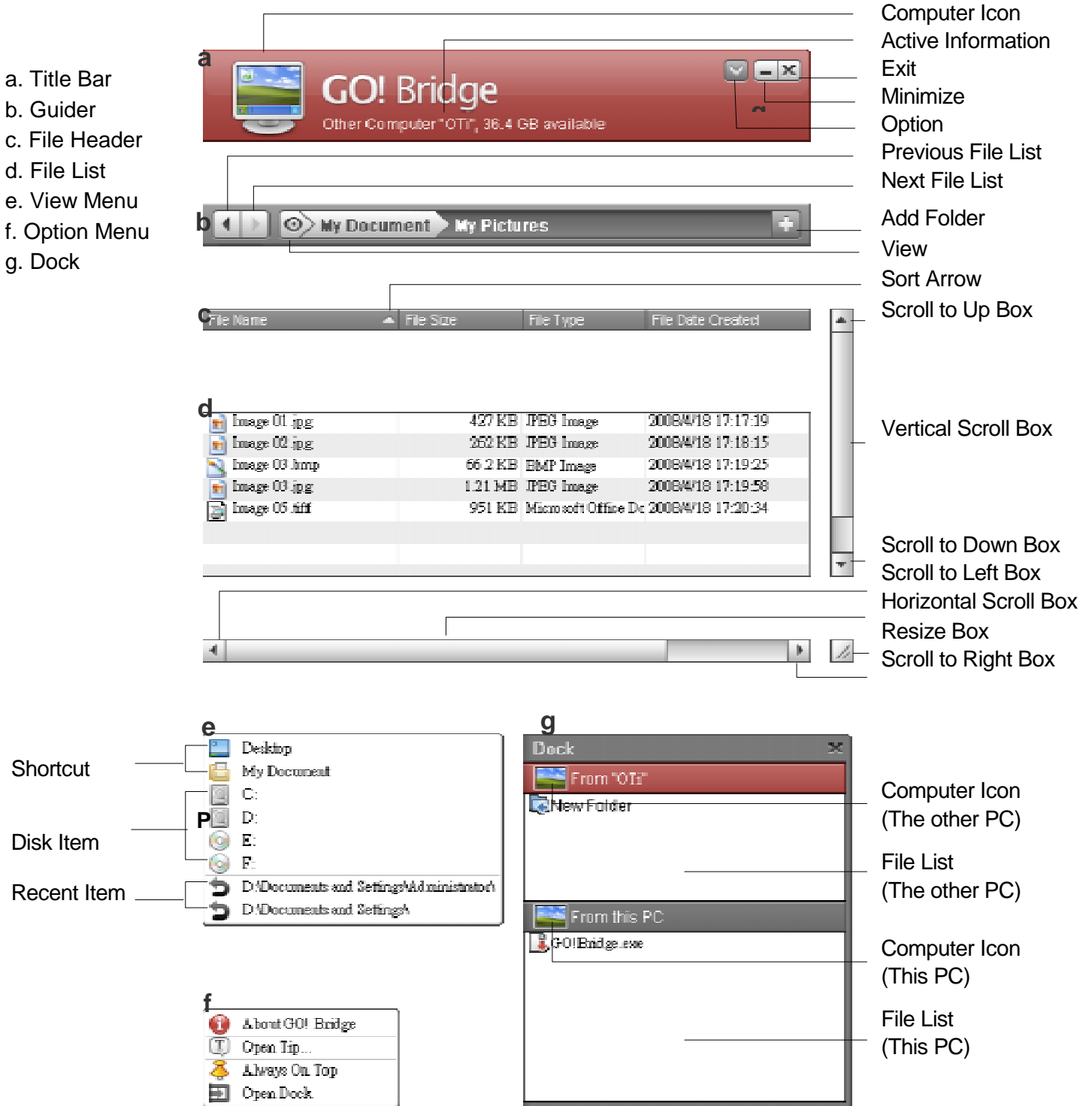


Figure 2 The Exploded View of GO! Bridge



# Window Mode Description

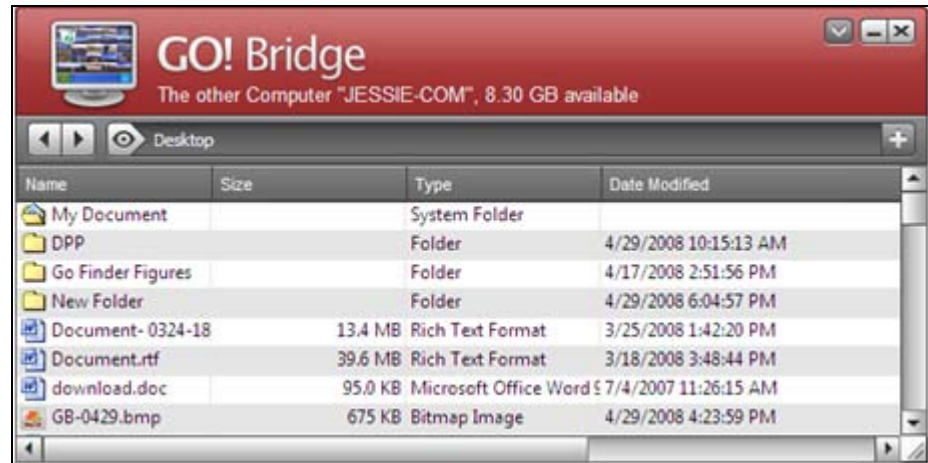


Figure 3 Window Mode

The initial Window Mode of GO! Bridge you launch is 400 Pixel x 400 Pixel, referred to Figure 4. The minimum Window Mode is 400 Pixel x 210 Pixel.

Left double click on the title bar on of GO! Bridge, you are able to enlarge Window Mode of GO! Bridge to the maximum window. Left double click it again; the window will switch to the previous size you adjusted. You can still press the Title bar to move the whole window.

## Title Bar


- **Device Icon**

When GO! Bridge is launched, it shows the other PC's desktop of Device Icon on Window Mode of your PC.

- **Active Information**

On the title bar of Figure 2, the active information shows the space available of the other PC.

- **Option**

Left click on the  icon, a pull-down menu will pop up for users to select.

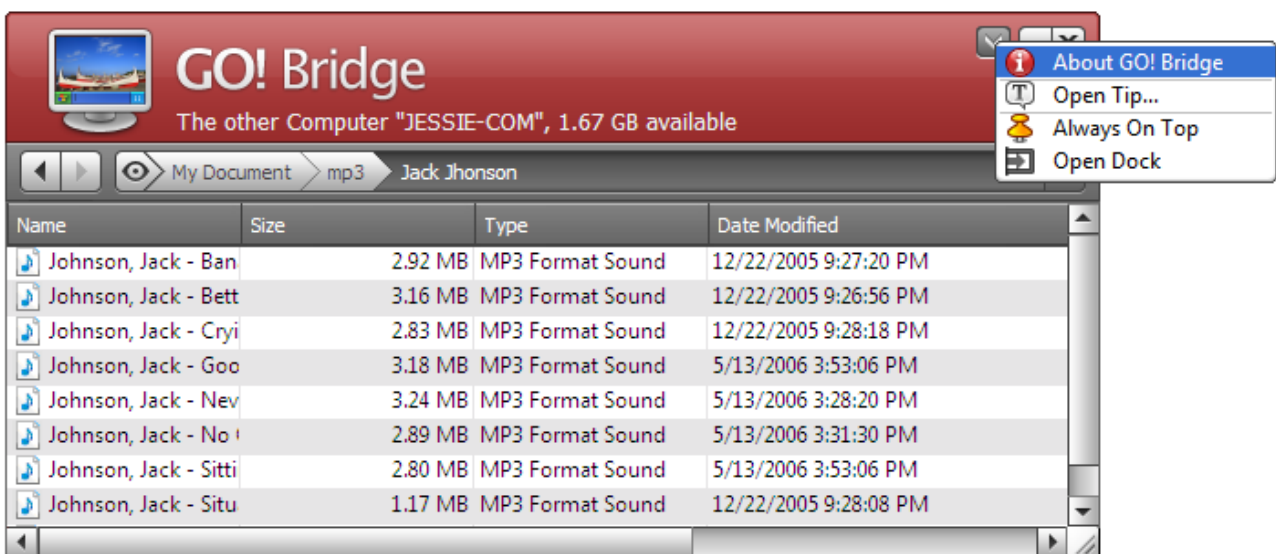


Figure 4 The menu of Option on GO! Bridge

- **About GO! Bridge**

Click it once, the information including the revision of GO! Bridge will be shown as Figure 5.



Figure 5 The version of GO! Bridge


- **Open Tip**

Select it to learn the tips of using GO! Bridge.

- **Always on top**

If you select it, Window Mode will be always on top of the window. To cancel this option; please click "Disable Always on Top" on the pop-up menu on Window Mode.

- **Open Dock**

Select "Open Dock" on the pull-down menu after clicking on  icon on Figure 4. A figure of Dock will pop up on Figure 6. You can collect files on Dock and then drag all the files to the destination for once. Therefore, it's not necessary to copy a single file every time and then wait for the file transfer. It's very convenient for two computers to work together.

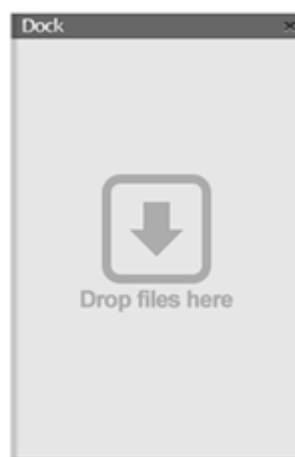


Figure 6 Open Dock

## Dock Area

Right click the file on Dock Area; a pop-up menu will appear for user to select. Users are able to choose "Copy" to copy the file and paste it to other destination. When users have copied files from other sources, press "Paste" to paste the files. Press "Remove from Dock" to remove the selected items on Dock. Click "Select All" to select all the files on Dock, and then you can copy and paste all the files to the destination you wish or just simply drag and drop them on the file list to the destination of the other PC.

If you wish to drop the files from this PC, you can select them from any sources of the host PC and then drop them on the dock area. Later on, you can transfer files for one time. Please refer to Figure 7.

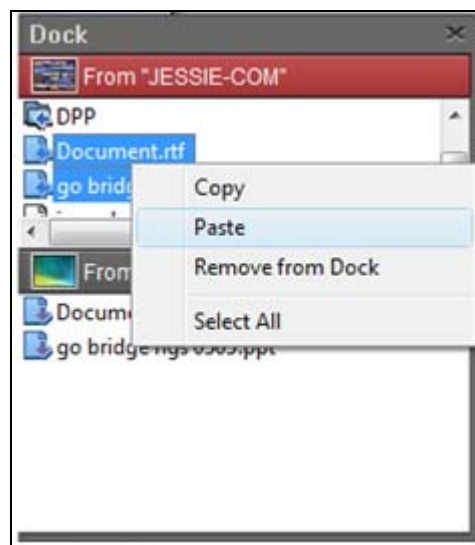


Figure 7 Edit Files on Dock Area

## File List

Right click on the file of the file list; the pull-down menu will be shown promptly. You can Open, Add to Dock, Copy, Paste, and Delete the files you selected on the file list. Please refer to Figure 8.

➤ **Open**

Right click the file on the file list to open the file you wish. Or you can also double click the file on the file list to open the file.

**Note: Some execution files which need supported files such as graphic resources, library, and etc cannot be executed on the file list on remote PC.**

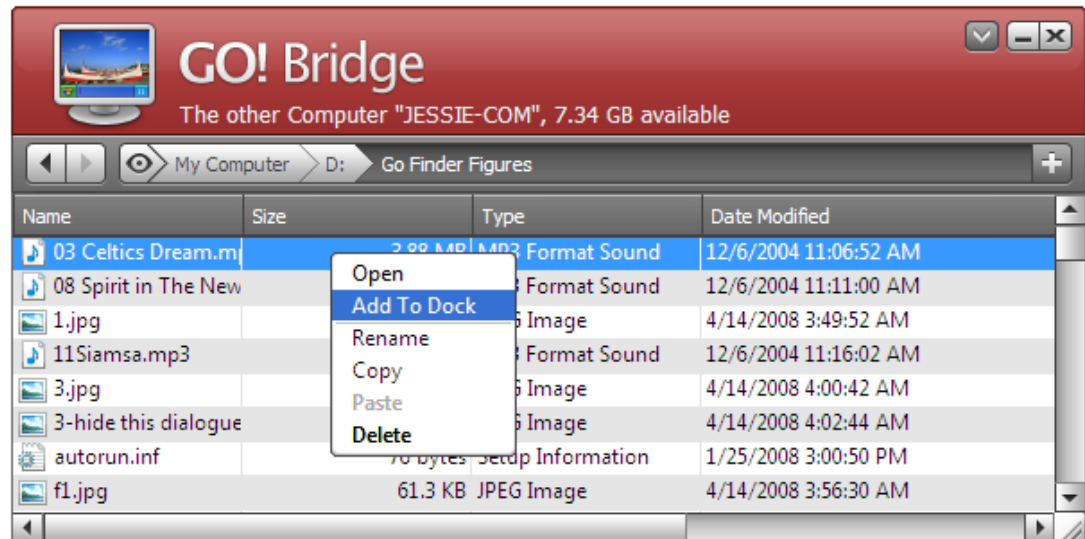


Figure 8 The Menu of File List

➤ **Add to Dock**

Right click on the selected files of the file list, and select “Add to Dock” to drop the selected files on the Dock Area. You can also directly add the selected files to Dock via simply “drag and drop”. Please refer to Figure 8.

➤ **Rename**

Right click on the selected files of the file list on Figure 9, and select “Rename” on the pop-up menu. Modify the file name you wish to complete it.

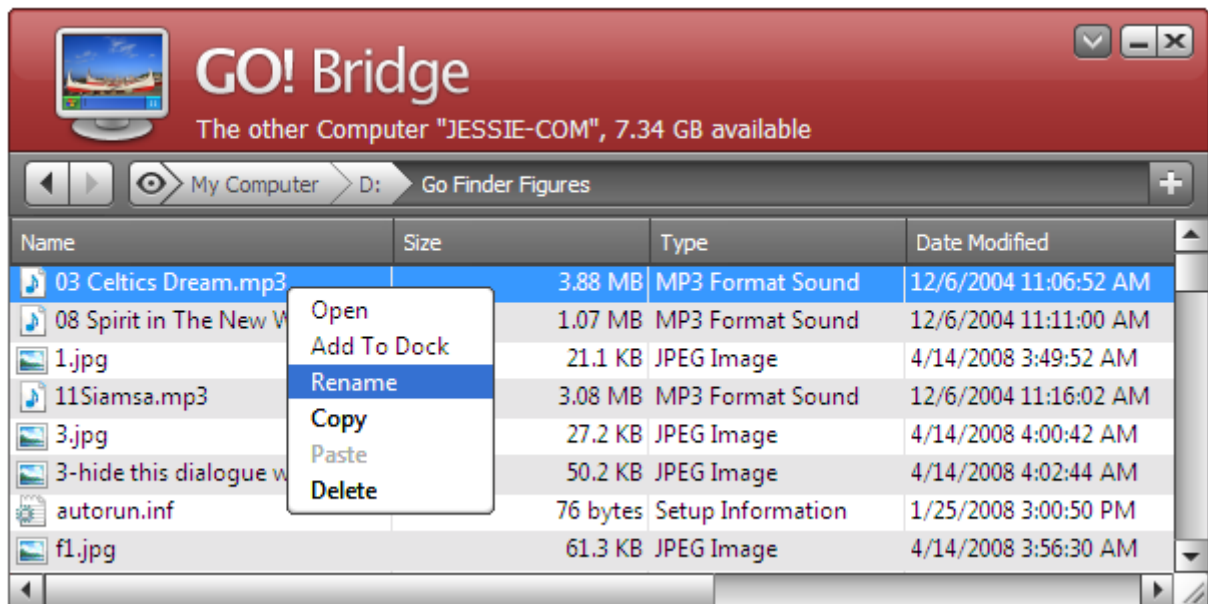


Figure 9 Rename the file on the file list

### ➤ Copy / Paste

Right click on the file or folder and select “Copy” on the pull-down menu. Right click on the selected file on the file list to “Paste” the data to the destination you wish. However, you can’t paste it onto the same source nor can you copy and paste it onto the same PC, either.

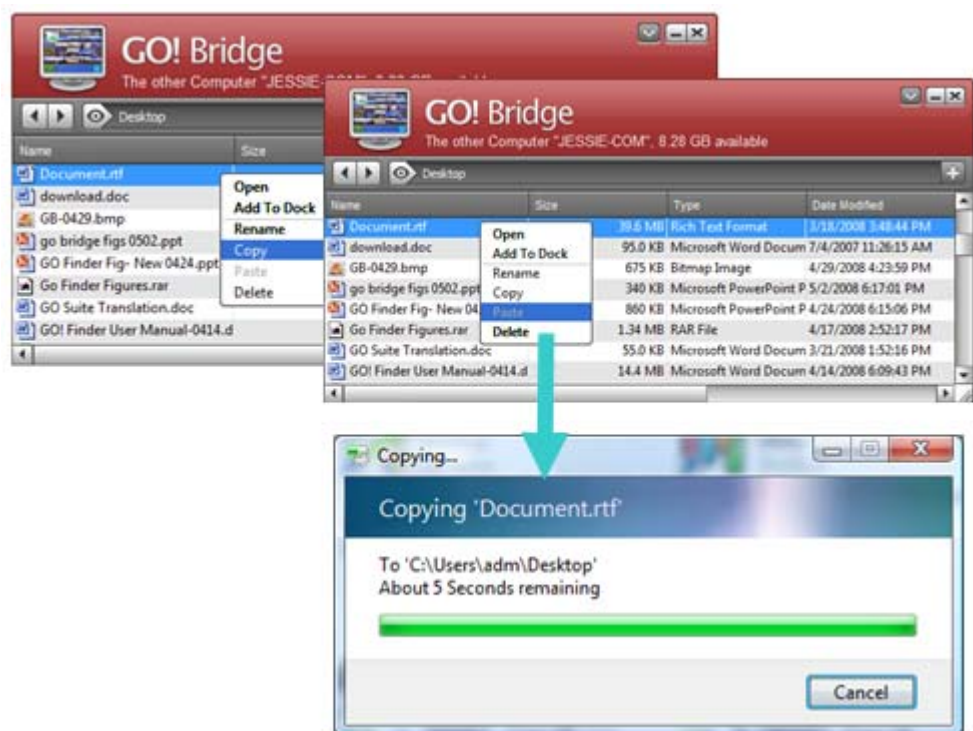


Figure 10 Copy &amp; Paste the file

## ➤ Delete

Right click on the items on the file list and choose "Delete" on the pop-up menu. A pop-up window will warn you "Do you want to delete the selected items?" Click "Yes" to delete it; press "Cancel" to abort it. Please refer to Figure 11.

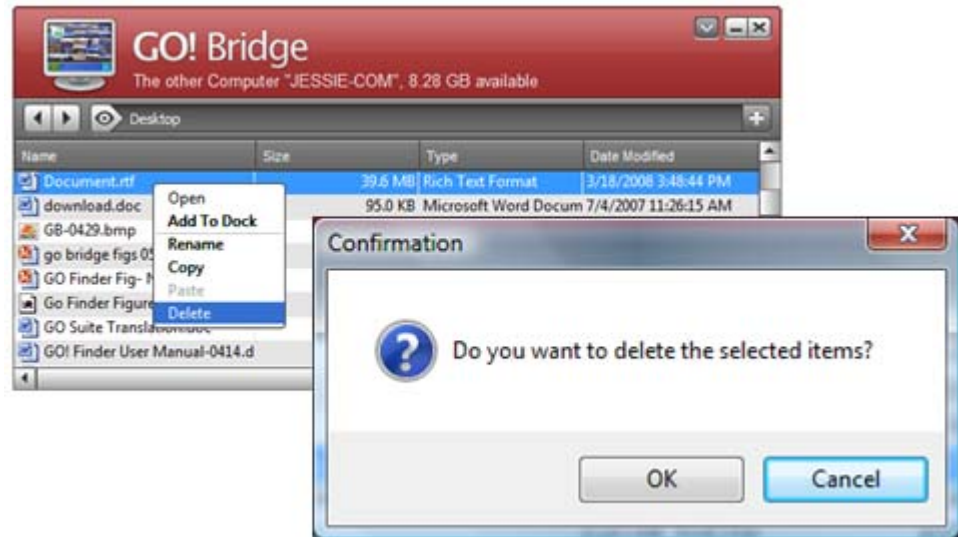


Figure 11 Delete the selected item

## File Transfer

There are three ways to transfer files on GO! Bridge.

1. GO! Bridge allows user to transfer files via the dock area for once .
2. You can transfer files directly via copying the file from the source to the destination you wish to paste on the file list on Window Mode of the other PC.
3. User can simply drag the file and drop it on Icon Mode of the other PC; however, it only allows you to transfer the file to the desktop of the other PC. A progress Information window will pop up to notice you that the file transfer is in progress; press "Cancel" if you wish to abort the file transfer.

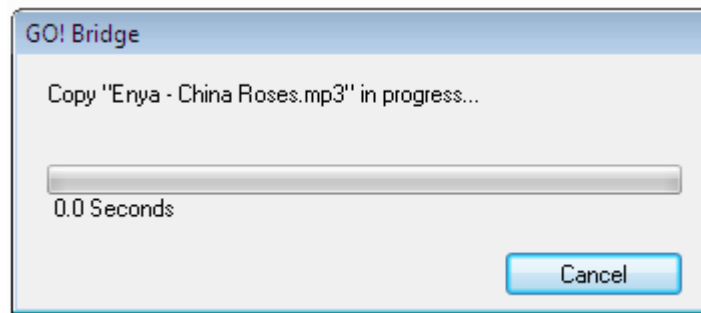



Figure 12 Progress information of the file transfer

## Window Control

### ➤ Minimize

Press  on the top-right corner of Window Mode to minimize the window. Click "GO! Bridge" on the task bar of windows to switch to Window Mode.

### ➤ Exit GO! Bridge

There are two ways to exit the program:

- You can right click the icon of GO! Suite on the system tray and select "Exit" to exit the program.

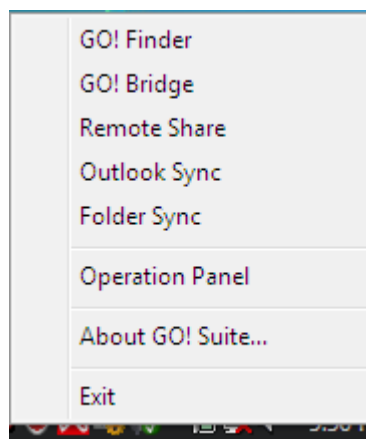



Figure 13 Exit GO! Bridge via the system tray



- You can also Click on  button on the top right corner of Window Mode; a confirmation window will pop-up to ask "Do you want to Exit the program"? Click "OK" to exit GO! Bridge; click "Cancel" to abort it.

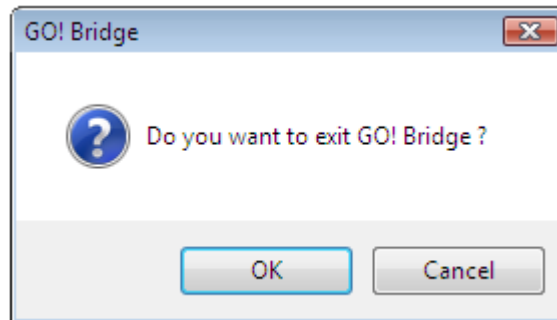


Figure 14 Exit the Program via Window Mode

## Guider Description



Figure 15 Guider Description

- **Previous File List**

Left click on it, you can return to the previous browsing file list promptly.


- **Next File List**

Click on it; you can go to next file list promptly.

- **View**

Left click on it; "View Menu" will be launched.

- **Add Folder**

Left click on  icon to add a new folder. You are able to rename the folder by inserting the words you wish.

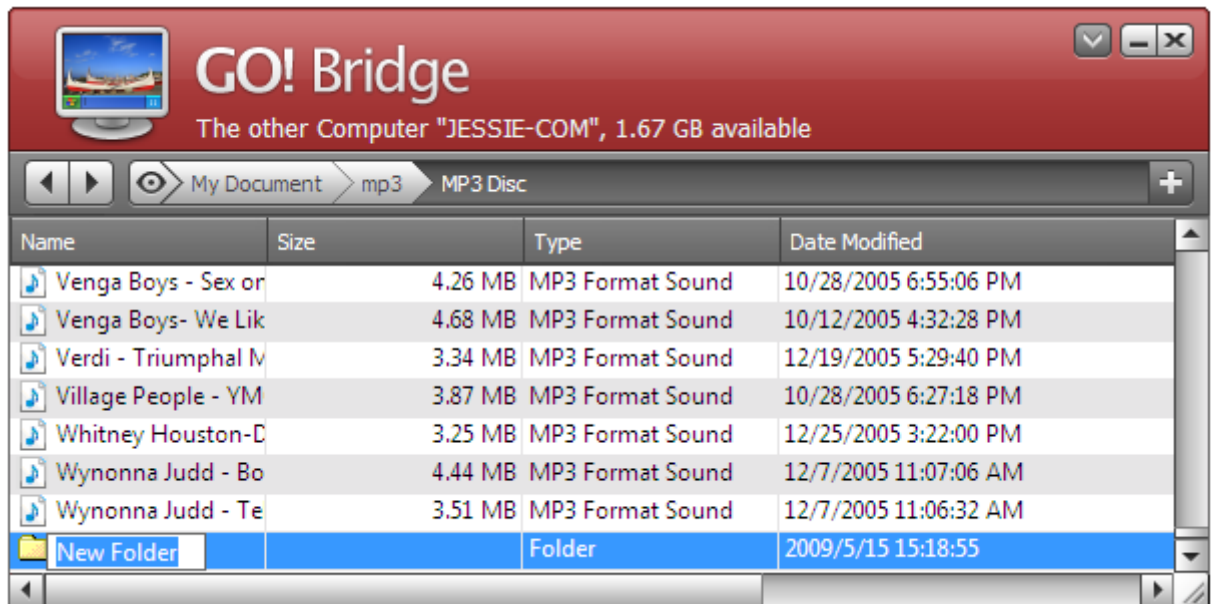



Figure 16 Add a New Folder

- **View Menu**

Left click the  icon on the guider, a pull-down menu will pop up for you to choose which item of the other PC you wish to view.

- **Quick Path Item**

It allows you to search the default path item quickly.

- **Disk Item**

It shows the list of the device item of the other PC.

- **Recent Path Item**

It displays the path item you browse recently.

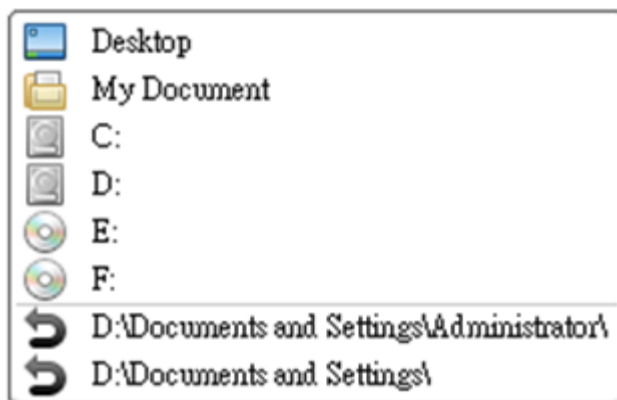


Figure 17 View Menu Description

Right click on the items of view menu, you can edit the file and folders as the following:

On the blank area on This PC	Select Single File on This PC	Select more than two files on This PC
Select All	Copy Paste Remove from Dock Select All	Copy Paste Remove from Dock Select All
On the blank area on the other PC	Select Single File on the other PC	Select more than two files on the other PC
Select All	Copy Paste Remove from Dock Select All	Copy Paste Remove from Dock Select All

# Icon Mode of the other PC

Double click on the device icon on Window Mode; you are able to switch it to Icon Mode of the other PC, and vice versa.



Figure 18 Icon Mode

Double click Icon Mode again to switch back to Window Mode. Users are able to drag the data from the host PC to drop them onto the device icon of Icon Mode; that will help user to transfer data to the root directory of the other PC only.