

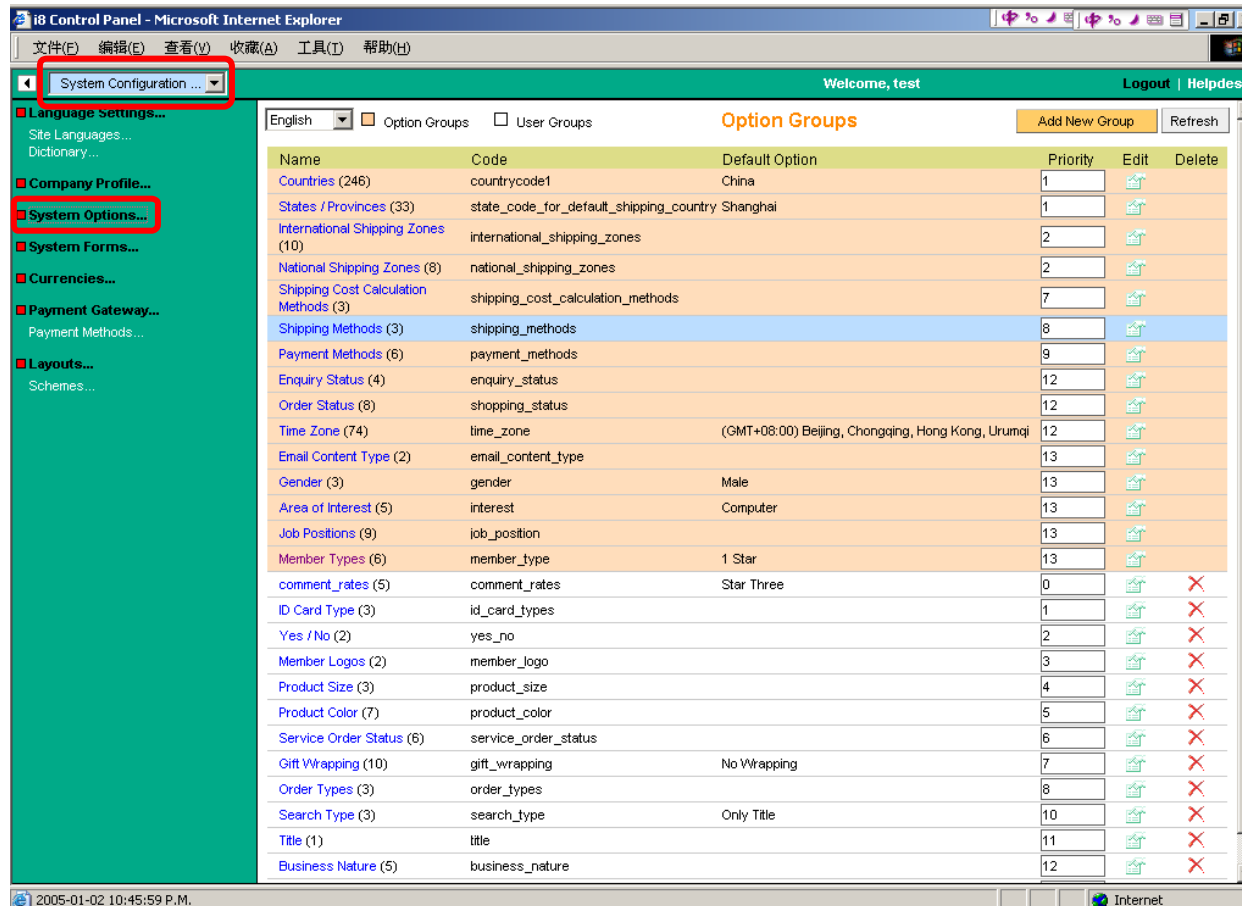
16. System Options

OPTION GROUPS	1
ADD / EDIT OPTION GROUP.....	2
OPTION LIST / ENTRY.....	3
SPECIAL OPTION GROUPS	4

System option is the most important and frequently used part. They are used in:

- Registration Form
- Search box
- Product attribute management
- Payment gateway
- Order status
- Member type
- Order type
- Gift wrapping

OPTION GROUPS



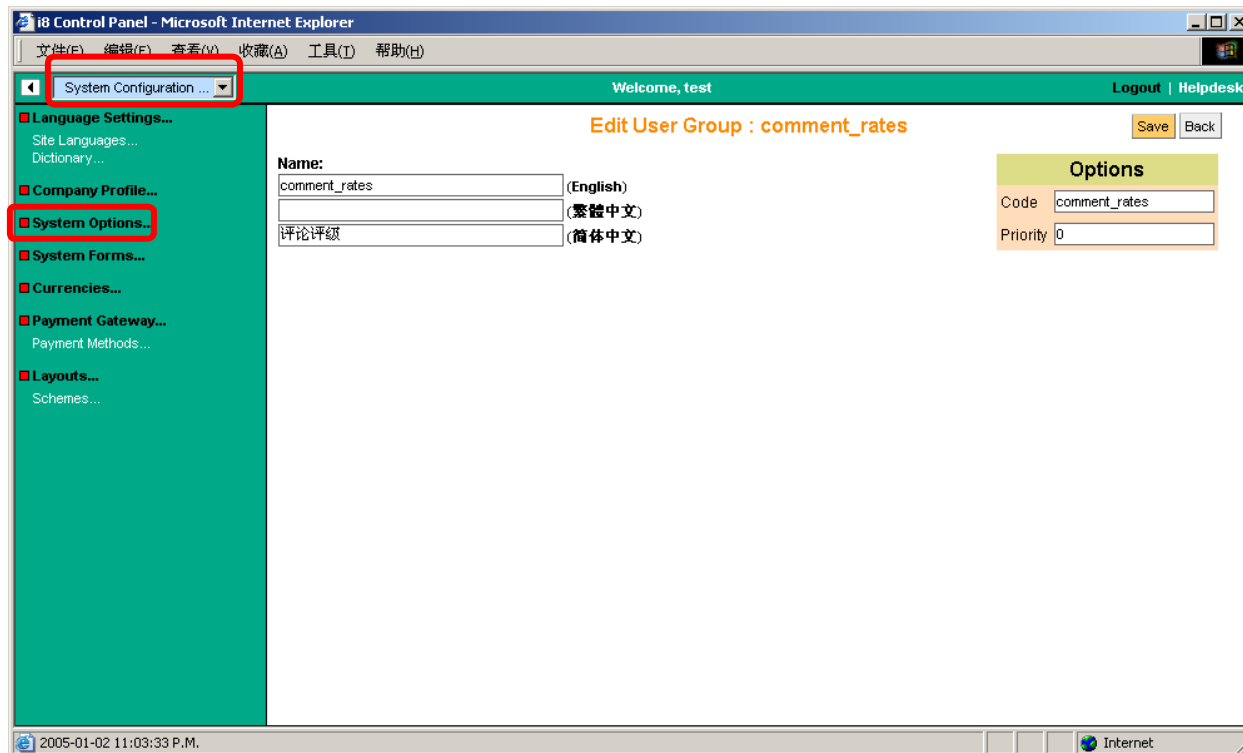
LOC : System Config. > Options ...

Some important option groups are:

Group name	Description
Country	Used in registration form, enquiry form and order shipping form
State/Province	Used in registration form, enquiry form and order shipping form
International shipping zones	Obsolete
National Shipping zone	Obsolete
Shipping Cost Calculation Method	How shipping cost is calculated. For example: by weight, by quantity, no cost, etc.
Shipping methods	Shipping methods for product delivery
Payment methods	Order payment methods
Enquiry Status	Status for enquiries by member
Order Status	Status of orders by members
Email content type	Email will be sent to members in two forms: HTML and text
Gender	Used in registration form
Interests	Use in registration form for administrators to know more about his members
Position	Job title of members, used in registration form
Member type	Used for classification of members, particularly on their discount assignation
Comment Rates	Marks for products and contents to be graded
Title	In registration form (Mr. Mrs., Miss., etc)
Yes/No	Survey forms
Member Logo	Graphical illustration of member in forum
Product Size	Product attributes value selection
Product Color	Product attribute value selection
Gift wrapping	Delivery packaging for product orders
Order type	Shippable goods, virtual goods, etc.
Search type	In search form, search criteria (Title, content, forum, etc.)

Option group codes should not be changed to prevent system from behaving mysteriously and system groups cannot be deleted

ADD / EDIT OPTION GROUP



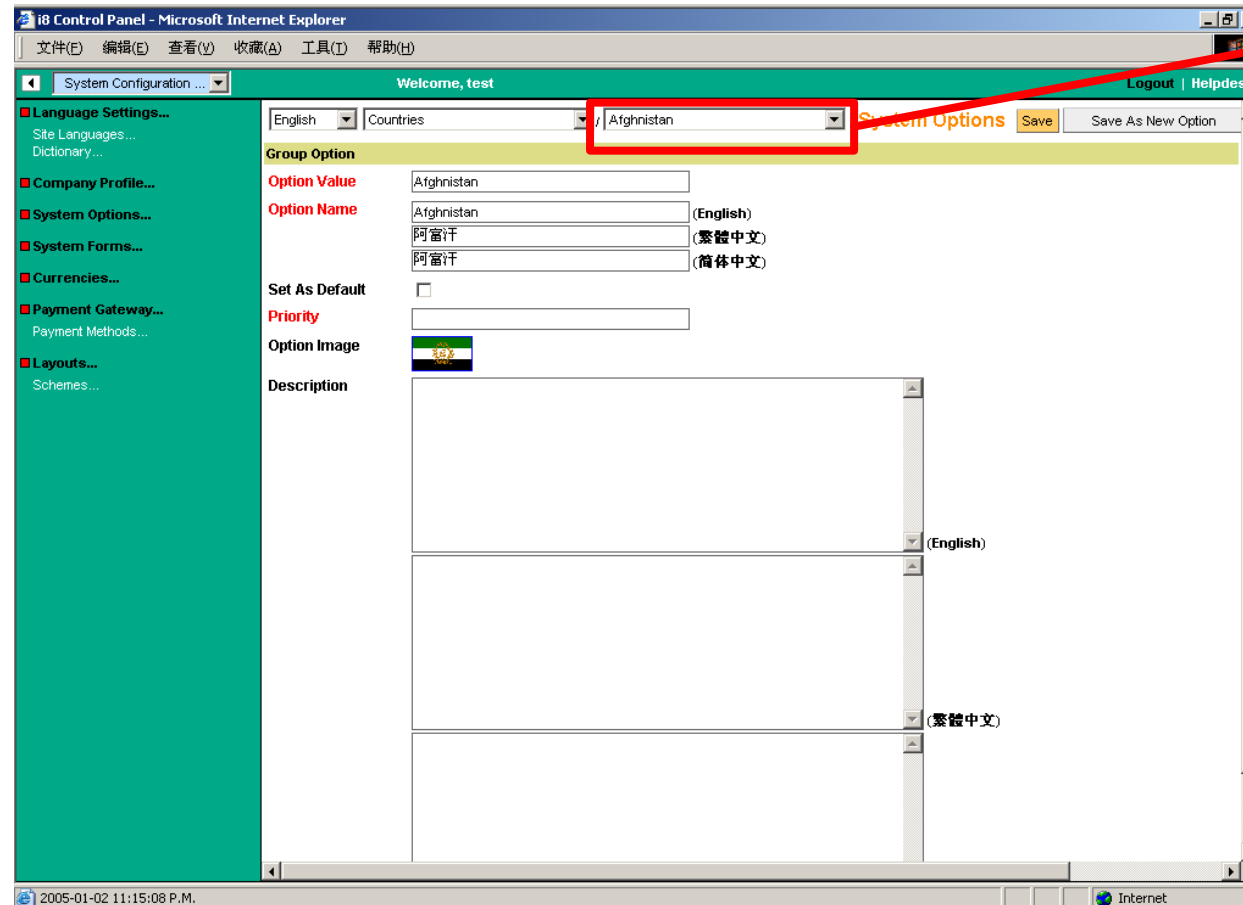
LOC: : System Config. > Options ...

Click "Add New Group" or "Edit Group" button

- **Name:** Name of the group
- **Code:** Code of the group (Must be unique and system group code cannot be changed)
- **Priority:** Display priority of the option group at back end

For advanced users: If you change the group code here, you must change the code where the code has been reference too.

OPTION LIST / ENTRY



LOC:: System Config. > Options ...
Click a group name to view option list/entries

Switch between option item

- **Value:** The value of the option, must be unique in a group
- **Name:** Option item caption (Multi-lingual)
- **Set default:** Default selection of a option group
- **Priority:** Option item display priority
- **Image:** In some system, option items are displayed as images, such as member logo selection, or language selection, gift wrapping, etc.
- **Description:** Extra information for the option items, some system will use this description to provide extra functions

SPECIAL OPTION GROUPS

The following option groups are very important groups that we recommend you to know more about their nature before make any modification

Group	Description
Shipping methods	Once you change option code for items of this group, you must go to the shipping cost calculation part to make corresponding changes. It is suggested that do not change the option code, instead, change the option name/caption to prevent chaos
Payment methods	Same as above
Member type	As member type are related to member discounts, so you must go to the general setting part of the membership management session to make corresponding updates
Gift wrapping	Gift wrapping option item values must be in the form of XX=12.34 , where XX is the gift wrapping code, and 12.34 is the price in system settlement currency rate
Order Type	Never change the code (01 for orders with shippable goods only, 10 for virtual/non-shippable products, 11 for order of mix type)
Search Type	Do not change the item value code (Defaults are TITLE, FULL, CONTENT, BBS)