

Rocosoft PTZJoy™ Canon VC Controller

User Manual

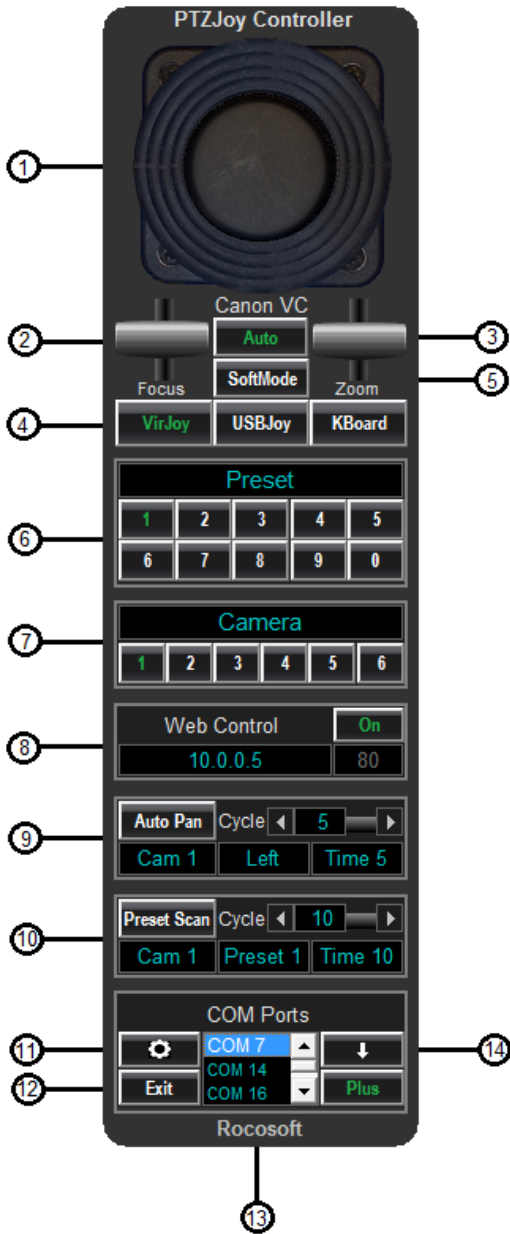
VISCA PTZ Camera Control Software for PC

- Canon VC-C4
- Canon VC-C4r
- Canon VC-C50i
- Canon VC-C50ir

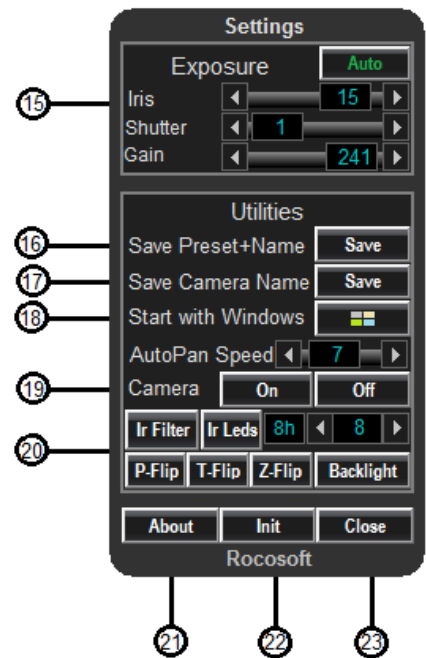


TABLE OF CONTENTS

PROGRAM INTERFACE	3
GETTING STARTED	4
CONTROLLING YOUR PTZ CAMERA.....	4
VIRTUAL JOYSTICK CONTROL.....	4
USB JOYSTICK CONTROL.....	5
CALIBRATING YOUR JOYSTICK	5
USING YOUR JOYSTICK	6
JOYSTICK SHORTCUTS	6
ZOOMING WITH GAMING JOYSTICK	9
SOFT JOYSTICK MODE	9
KEYBOARD HOTKEYS.....	10
CONNECTING MUPLIPLE CAMERAS	10
HOME RUN CONNECTION	10
HOW TO CONNECT.....	10
DAISY-CHAIN CONNECTION	10
HOW TO CONNECT.....	10
NAMING CAMERAS IN DAISY-CHAIN MODE	11
WORKING WITH PRESETS	11
SETTING AND RECALLING PRESETS.....	11
PRESET SCAN	11
USING THE WEB REMOTE	12
ADDITIONAL CONTROL SETTINGS	13
ADDITIONAL VIDEO SETTINGS	13



1. **Virtual Joystick Controller**
2. **Focus Lever**
Focus Near/Far
3. **Zoom Lever**
Zoom IN/OUT
4. **Control Type Selection**
Chose between Virtual Joystick, USB Joystick, or keyboard shortcuts
5. **Soft Mode**
Precise controls when using a USB Joystick
6. **Preset Selection Buttons**
7. **Camera Selection Buttons**
Switch between daisy-chained cameras
8. **Web Control**
Turn ON Web Control Access via IP Network
9. **Auto Pan**
Set camera to pan back and forth at a specified interval
10. **Preset Scan**
Scan between presets at a specified time interval
11. **Settings Button**
Opens settings screen
12. **Exit Button**
Quit Program
13. **COM Port Window**
Displays list of active and available COM ports
14. **Minimize**
Minimizes program to task bar
15. **Exposure Settings**
Auto, Iris, Shutter, Gain
16. **Save Preset**
Saves preset position and name
17. **Save Camera Name**
Saves camera name
18. **Start with Windows**
Set up program to auto start with Windows
19. **Camera ON/OFF**
20. **IR Filter, PTZ Flip, Backlight**
21. **About**
Additional information about the program
22. **Initiate Button**
Quickly connect cameras without the need to restart program
23. **Close**
Closes Settings screen



GETTING STARTED

Before starting PTZJoy, connect your PTZ camera to your computer using a VISCA Control cable. Please make sure your PTZ camera is turned ON.

- 1) Connect the VISCA control cable to the **Serial/USB COM port** of your computer and to the **VISCA In** jack of your camera.
- 2) Check which COM port number is being used by your serial device in the Ports section of the **Device Manager*** on your computer (example: COM2)**.

To access the **Device Manager, open the **System** folder from your **Control Panel**, and click on **Device Manager**. Expand the **Ports** section to view your active COM ports and double check that there are no yellow exclamation marks. If you see a yellow exclamation mark next to any of your COM ports, you will need to fix this issue. If there are no yellow exclamation marks, these ports are active and available to control cameras.*

*** If you are connecting only one camera, or multiple cameras in a daisy chain mode, you will need to know only one COM port number. If you have multiple cameras connected to multiple ports, you will need to know the COM port numbers being used in order to switch between cameras in the application.*

CONTROLLING YOUR PTZ CAMERA

Once the PTZ camera is connected to your computer, open PTZJoy. All COM ports available to control PTZ cameras will be listed in COM port window. Select the COM port your camera is connected to from the list of available COM ports and choose the desired method of camera control from the Control Type Selection buttons: **VirJoy**, **USBJoy**, or **KBoard**. The default Control Type is **VirJoy**.

VIRTUAL JOYSTICK CONTROL

- 1) Using your computer mouse, click on any point on the virtual joystick and drag your computer mouse in the direction you want to move your selected camera*.
- 2) To activate the Zoom In and Zoom Out feature, click and drag the **Zoom Lever** with your computer mouse up to zoom in and down to zoom out*.
- 3) Adjust the focus of the camera but clicking and dragging the **Focus Lever** with your computer mouse up to focus near, and down to focus far*. Click on the **Auto** button to auto focus the camera.

**Regulate the speed of the pan, tilt, and zoom movements by the movement of the computer mouse relative to the center point of the virtual controls - called the zero point, at which the speed is zero. The speed of pan and tilt movements is determined by they location of the mouse relative to the center point of the virtual joystick; the speed of the zoom in and out movement is determined by the location of the mouse relative to the center point of the zoom lever. The further away from the zero point of the virtual joystick or zoom lever that you move the mouse, the quicker the camera will rotate. The closer the mouse is to the zero point of the virtual joystick or zoom lever, the slower the camera will rotate.*

USBJOY JOYSTICK CONTROL

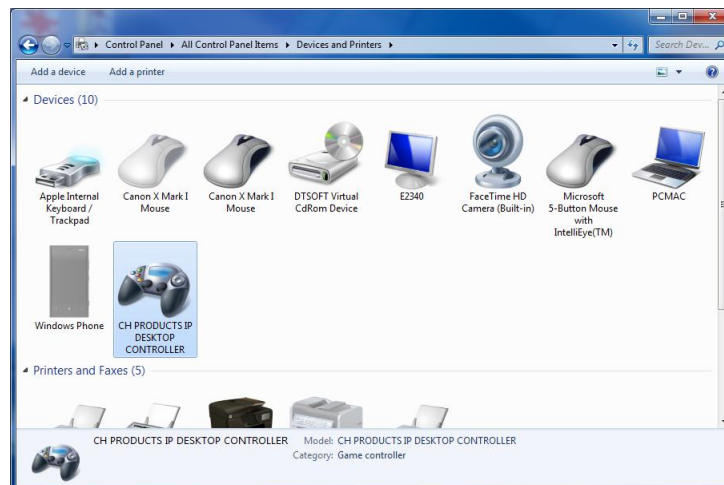
We recommend checking if your cameras work with our Virtual Joystick first before trying to connect a USB Joystick.

- 1) Connect your joystick controller to an available USB port on your computer and wait until your computer initializes it.
- 2) Follow instructions below to calibrate your joystick.

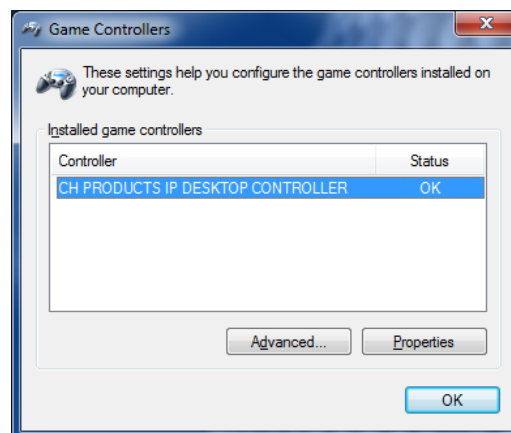
CALIBRATING YOUR JOYSTICK

Calibrating your joystick controller will help the joystick work more accurately with the PTZJoy application by finding the exact zero point and peripheral borders of the controller.

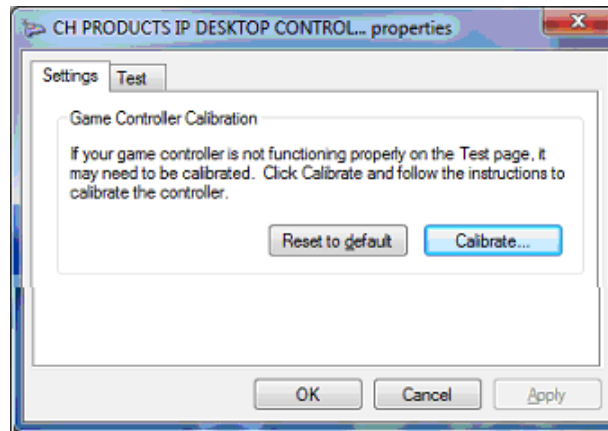
- 1) Open **Control Panel** → open **Devices and Printers**
- 2) You should see a screen showing available devices:



- 3) Find your Joystick Controller and right click on the icon. Select **Game Controller Settings**. Highlight the controller you wish to calibrate and select **Properties**.



- 4) To start the calibration process, select Calibrate under the Settings tab to initiate the Device Calibration Wizard:



USING YOUR JOYSTICK

Once your joystick is connected and calibrated, you can begin using it to control your connected PTZ cameras.

- 1) Click on the USBJoy Button.
- 2) Move your USB joystick in the desired direction to control your camera. Regulate the speed of the pan and tilt movements by the movement of the joystick relative to its center point, or zero point. The further you move the joystick away from it's zero point, the quicker the camera will rotate.

USING THE BUTTON SHORTCUTS ON YOUR JOYSTICK

All USB joysticks are different, but most of them have special shortcut buttons that can be assigned specific commands. This is a list of the PTZJoy pre-assigned functions for buttons on a USB joystick:

Button #	Function
1	Zoom In
2	Zoom Out
3	Previous Camera
4	Next Camera
5	Previous Preset
6	Next Preset
7	Call Preset

Here are some examples of different button locations for several common joysticks:

LOGITECH ATTACK3



PROFESSIONAL PTZ JOYSTICK



THRUSTMASTER T.1600M



THRUSTMASTER TOP GUN USB VERSION



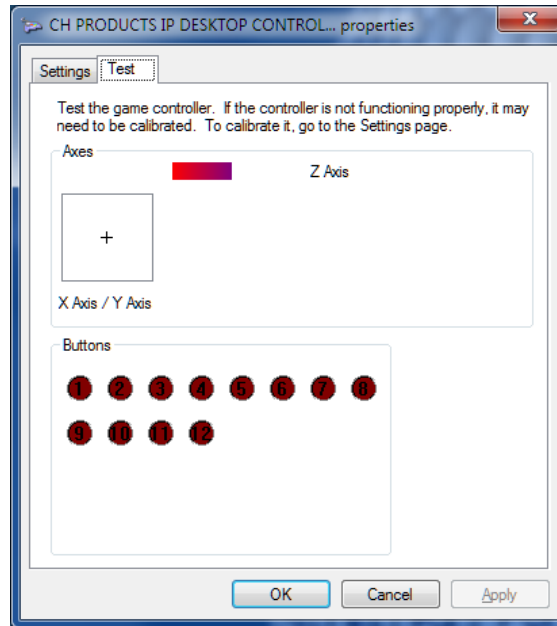
CYBORG V-1

LOGITECH WIRELESS GAMEPAD



Your joystick may have a different button layout. To check your joystick's button layout:

- 1) Open **Control Panel** → open **Devices and Printers**
- 2) Find your Joystick Controller and right click on the icon. Select **Game Controller Settings**. Select your USB joystick from the list and click on **Properties**.
- 3) Select the **Test** tab. Press the buttons on your joystick and take note of which numbers light up under the **Buttons** section in this window. Once you know which buttons on your joystick correspond to a specific number, refer to our command table to see a list of functions and their corresponding buttons.



CONTROLLING ZOOM FUNCTION ON A GAMING PTZ JOYSTICK

If using a gaming joystick with a zoom lever, you can use this lever for controlling the zoom function with variable speeds. Since gaming joystick levers do not have a center, or zero, position like professional joystick levers do, they will not return to the zero position when you release the lever – it has to be done manually.

You must manually find a zero position on you gaming joystick and always start the program with the lever in that position. By doing this, you will have full zoom control with variable speed of your camera.

- 1) Start PTZJoy with the joystick's lever in roughly the middle position.
- 2) Move the zoom lever up and down to zoom in and out to find the point where you can completely stop the zoom. This is your zero point.
- 3) Restart PTZJoy with the lever in zero position. Your joystick is now configured to use the zoom lever with a zero point.
- 4) You can now regulate the speed of the zoom by the movement of the zoom lever relative to its zero point. The further you move the lever away from it's zero point, the quicker the camera will zoom in and out. To stop the zoom, you must move the zoom lever back to the zero point.

SOFT JOYSTICK MODE

This mode allows for slower, more precise movements of the camera while using the Virtual or USB joystick. Click on the **Soft Mode** button to switch to Soft Joystick Mode.

KEYBOARD HOTKEYS

Control pan/tilt/zoom/focus functions, change speed settings, call on presets, and switch cameras using pre-assigned shortcuts or “hotkeys” on any standard keyboard. This is a diagram of the PTZJoy pre-assigned keyboard hotkeys:



CONNECTING MULTIPLE CAMERAS

HOME RUN CONNECTION

In a home run connection, multiple cameras are connected to different USB/Serial ports on one computer and each camera is controlled through a separate COM port.

HOW TO CONNECT:

- 1) Connect your cameras to the USB/Serial ports of your computer using Serial/USB VISCA cables (*described in detail in the **Getting Started** section*).
- 2) Check which COM port numbers are being used by your cameras in the **Ports** section of the **Device Manager**.
- 3) Switch between cameras in the application by selecting the COM port number of the camera you wish to control from the list of active COM ports.

Note: In Home Run Mode you can connect as many cameras as there are USB/Serial ports.

DAISY-CHAIN CONNECTION

In a daisy chain connection, the first camera is connected to a USB port/Serial port of your computer and additional cameras are “daisy-chained” to the first camera using daisy chain cables. In this configuration, multiple cameras can be controlled through one COM port.

HOW TO CONNECT:

- 1) Connect your first camera to the USB/Serial port of your computer using a USB/Serial VISCA cable.

- 2) Connect additional cameras to the first camera with daisy chain cables.
- 3) Switch between cameras in the application with the plus and minus camera selection buttons.

Note: You can Daisy Chain up to 7 Sony per COM port. Additional Daisy Chain connections can be added to additional available USB/Serial ports.

NAMING CAMERAS IN DAISY CHAIN MODE

Easily distinguish between multiple cameras by naming your connected cameras.

- 1) In the Camera Setup section, select the number of the camera you wish to name.
- 2) Type in the desired name for the camera in the camera name window, open the “Settings” Window, and click **Save** next to the camera section. Repeat for all cameras connected in the daisy chain.
- 3) Once all cameras are named, you can switch between cameras by selecting the camera from the list of camera number buttons and see which camera is currently chosen by name.

WORKING WITH PRESETS

SETTING AND RECALLING PRESETS

- 1) In the Preset Configuration section, use the number buttons to input the preset number you wish to set up for the selected camera.
- 2) Move your camera in the desired position, type the desired name for the preset in the preset name window, open the “Settings” Window and click **Save** next to the preset section.
- 3) Repeat for up to 16 presets.
- 4) Recall on a preset by inputting the desired preset number using the number buttons and clicking Call. The current preset number and name will appear on the screen.
- 5) If using your USB Joystick to select presets, the current preset number and name will also appear on the screen.

PRESET SCAN

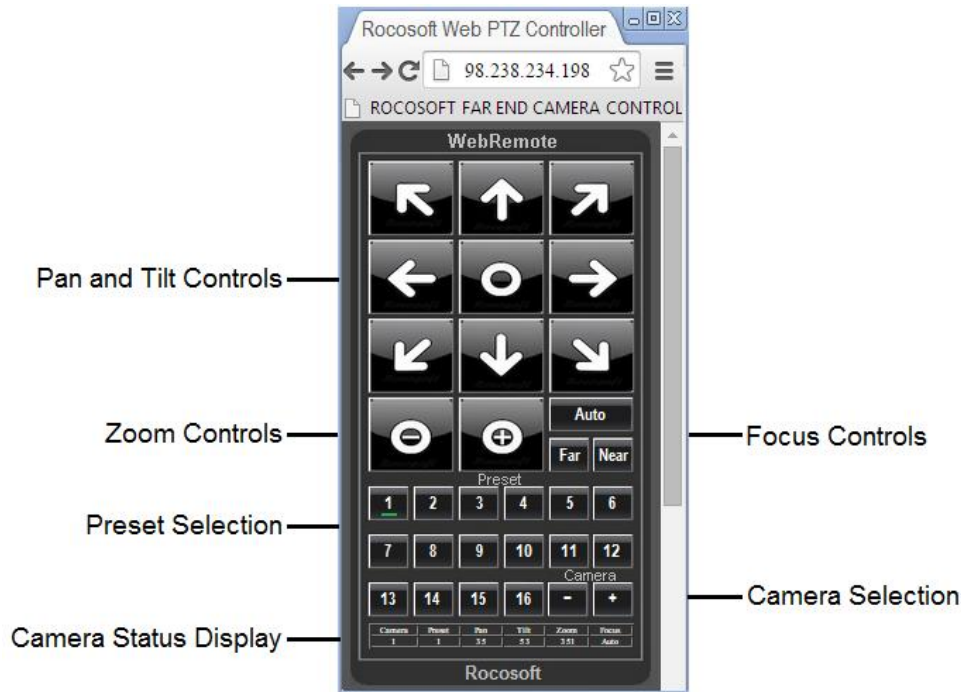
Ideal for security applications, the Preset Scan feature allows you to command a selected camera to scan between presets at a specified time interval. Presets must already be configured.



- 1) Click **Preset Scan** to start the scan cycle. Click it again to stop it.
- 2) Adjust the time interval between the presets with the cycle slider.

USING THE PTZ WEB REMOTE

Control PTZ cameras connected to the Main Controller from the web browser of any mobile device over any LAN, Wi-Fi, and WAN IP network. Use it as a far-end controller to switch between cameras, control pan, tilt, zoom, and focus, change the speed settings of camera movements, and call on presets.



- 1) Turn ON Web Control access on the Main Controller.
- 2) The default port for Web Control is 80 and the current IP Address and access information of the Main Controller can be found by clicking on the **About** button. You can add security to the connection by changing the Web Control port number on the Main Controller.
- 3) Open the web browser on your mobile device and type in the IP Address of the Main Controller (see **About**) into the URL Bar on your mobile device.
- 4) The WebRemote will appear in the web browser of your mobile device and you can now control the PTZ cameras connected to the Main Controller.* The WebRemote will appear full size in your web-browser – if you are using a computer, you can resize the WebRemote to a more convenient-to-use size by simply changing the zoom settings in the browser.
- 5) The Camera Status Display will show relevant information such as which camera is being controlled, which presets position is active, the pan, tilt, and zoom speed, and focus mode.

*Control cameras using the WebRemote from a device outside of your local area network by configuring your router and opening ports to accept outside signals. Once your router is configured, you can open a web browser on any device and type in the IP Address of the Main Controller and control your camera.

ADDITIONAL CONTROL SETTINGS

Minimize to Taskbar: Minimizes program to taskbar for quick access

Start with Windows: Configure program to automatically start with Windows Startup.

- 1) Click on the Windows Logo Button to activate this feature
- 2) Restart the computer.
- 3) The program should start with Windows automatically.
- 4) If it does not start automatically, right click on the PTZJoy program loader file and click “Run as Administrator”. Click on the Windows Logo Button in the program again, close the program, and restart your computer.

Pan, Tilt, Zoom Flip: The *P-Flip*, *T-Flip* and *Z-Flip* buttons inverse the Pan, Tilt, and Zoom directions of a selected camera.

Camera ON/OFF: Turns selected camera ON or OFF

Camera Initiation: Allows you to add or remove cameras in a Daisy Chain connection without restarting all cameras.

Auto-Pan



- 1) Click **Auto Pan** to start the pan cycle. Click it again to stop it.
- 2) Adjust the length of the pan cycle with the cycle slider bar.
- 3) Adjust the auto pan speed from the settings panel.

ADDITIONAL VIDEO SETTINGS

Exposure Control Settings: Auto, Iris, Shutter, Gain

Backlight: Backlight Compensation

IR Filter: ON/OFF

IR LED's: ON/OFF