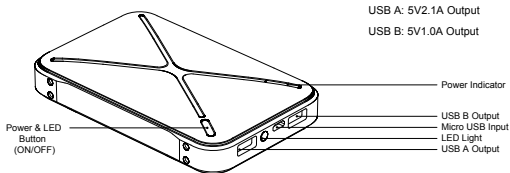




Extreme S 13000 Rechargeable Battery User Manual

Model: EN-EXSBK / EN-EXSWH

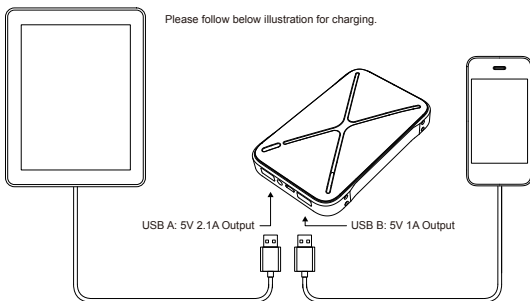
Energen Extreme Rechargeable Battery is designed for recharging consumer electronic products. Please read carefully to ensure fully understanding prior to operating the device.



Description

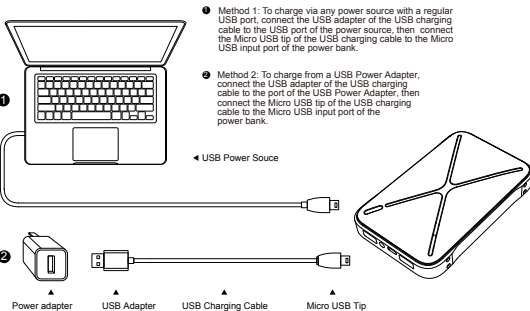
Energen Extreme is a universal portable USB power bank with a sleek body design. With an 8800 mAh capacity, it will keep your electronic devices running when the power source is out of range. The universal USB charging ports are compatible with devices such as PDA, MP3/MP4 player, digital camera, GPS, Bluetooth headset, cell phones, tablets, and more.

Charging the Devices



Please follow below illustration for charging.

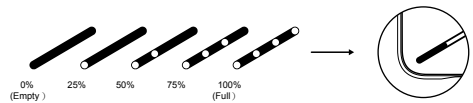
Charging the Power Bank



Instructions for Use

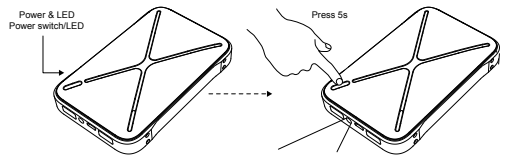
1. Press the power button to begin charging. The power indicator will be on.
2. When charging is completed, simply unplug the USB charging cable. The power bank will automatically shut off after 15 seconds and the power indicator will be off.

3. When charging the power bank, the power indicator will flash. When the power bank is fully charged, the indicator lights will be all on and then be turned off after several seconds. See below illustration.



4. To check the battery level of the power bank, press the power button and the battery level will be displayed through the power indicator.

5. To turn on the LED light, press and hold the power button for 5 seconds. Press the power button again to turn the LED light off.



Auto Protection Function

The Energen Extreme will automatically shut off to discharge a short-circuit and will turn back on after the short-circuit is relieved.

Electrical Parameters

Internal battery capacity: 13000 mAh

Charge retention time: 5000H

Input DC 4.75 ~ 5.25V 1.5A (Max)

Charge/discharge cycle index: 500 times

Output: 5V1A or 5V2.1A

Warning

1. Misuse of this device may cause damage and hazardous condition.
2. Do not smash or disassemble the device.
3. Do not operate the device in the presence of flammable fumes or close to fire to avoid explosion.
4. Do not operate the device when it's damp or in water.
5. If the product appears to be deformed, stop using and recycle it.
6. Keep away from children.

Caution:

1. Check all connectors and make sure they are secured before charging.
2. To avoid damaging to the Energen Extreme power bank, use the original USB Charging Cable for recharging the power bank.
3. Please use qualified USB charging cable to charge your electronic device to avoid damage.

Care and Maintenance

1. Keep the device dry. Humid environment may lead to corrosion of the electronic circuits. If the device gets wet, let it dry completely before using.
2. Do not store the device under high temperature which may cause warpage and damaging its battery.
3. If the device goes through an extreme temperature change, it may cause moist inside which could damage the circuit board.
4. Do not drop or knock on the device. It may damage the structure of it.
5. Do not apply harsh chemical or dissolvent onto the body.
6. If the device doesn't work properly, contact your local distributor or service center for after care.

Disclaimer

The capacity of this product refers to the internal battery capacity. Some energy will be lost due to energy conversion depending on the device being charged. Energen is not responsible for damages and injuries caused by misuses of the product.