

Superchips Model 3805 *Flashpaq* Tuner

2005-2006 Dodge Ram Cummins

2500 & 3500 Series and 2500 Mega Cab

Vehicle Programming Instructions

PLEASE READ THIS ENTIRE INSTRUCTION SHEET BEFORE YOU PROCEED



Thank you for choosing Superchips' new FLASHPAQ Tuner, a state-of-the-art, high powered tuning and data acquisition¹ tool. We listened to our customers and created this product from your requests.

The new FLASHPAQ Tuner includes the following features:

- Internet Updateable¹** – Supports web updates
- Built-In DTC Definitions** – No lookup manual needed
- Built-In Help Screens** – Reduces needs for user manual
- USB Communications** – Connects to any PC² with USB
- Custom Application Upgradeable** – Download customs
- Multiple Tuning Levels** – User Selectable Tuning Types
- Increased User Options** – Allow user more control
- Ergonomically Designed Case** – Fits well in hand
- Large, SoftKey Buttons** – Easy operation
- Permanently mounted cable** – No assembly required
- 300% Bigger Screen** – Includes graphics support
- BackLight Screen** – Easy to view day or night

Your 3805 FLASHPAQ tuner is setup specifically for your 2005-2006 Dodge RAM Cummins. The 3805 FLASHPAQ houses specialized databases that contain optimally calibrated, individual vehicle application, performance programs which tune BOTH the engine & transmission. Superchips calibrations include optimization of the entire power band – from idle to redline! Part throttle, as well as Wide Open Throttle is covered with Superchips FLASHPAQ Tuning.

Superchips calibrations include Performance and Performance Tow for stock vehicles. These Superchips calibrations include a raised engine rev limiter, raised WOT shift points, and a raised vehicle top speed limiter. The Performance Tow tuning allows for towing up to the vehicle manufacturer's limits. Check www.superchips.com and click on the FLASHPAQ icon for additional tuning levels.

The Superchips 3805 FLASHPAQ also offers users the following options:

Adjustable Tire Height (Correction of Speedometer)

Log onto www.superchips.com and click on the FLASHPAQ icon for additional updates.

Caution

Towing while the Performance tuning level is selected is not recommended and may cause damage to your vehicle. This damage is not covered by your vehicle warranty or by Superchips warranty.

¹ Coming 1st Quarter 2006

² Windows 98SE or higher (MAC Not supported)

Table of Contents

Product Information	Page 1
Table of Contents	Page 2
Superchips Warranty & Return Policy	Page 3
Dealership Reprogramming	
Vehicle Preparation	Page 4

Section A: Overview of FLASHPAQ

Hardware Overview	Page 5
-------------------	--------

Quick Start – Program NOW

Program my vehicle with <i>Superchips</i>	Page 6
Program my vehicle with <i>User Options</i>	Page 7
Program my vehicle to <i>factory stock</i>	Page 8

Menu Layout – FLASHPAQ

FLASHPAQ Hardware Setup & Info	Page 9
--------------------------------	--------

Menu Layout – Performance Tuning

Read Vehicle	Page 10
--------------	---------

Change Setup	Page 11
--------------	---------

View Settings	Page 12
---------------	---------

Program Vehicle	Page 13
-----------------	---------

Menu Layout – Vehicle Diagnostics

Diagnostics	Page 14
-------------	---------

Section B: Troubleshooting

Troubleshooting	Page 15
Frequently Asked Questions (F.A.Q.)	Page 18
Recovery Procedure	
Error Notifications	

Refund Policy

If for any reason during the first thirty (30) days after your purchase of a new Superchips product ("Product"), you may return it to the place you bought it for a full refund of the purchase price, credit or a replacement Product at the dealer's discretion. This Guarantee does not apply to products purchased from on-line Internet auctions nor does it apply to Products purchased used. Follow these procedures to get your refund or replacement.

1. If you are returning a MicroTuner or Flashpaq, use the MicroTuner or Flashpaq to return your vehicle to the stock settings for the vehicle. Instructions are included in the user manual.
2. Put the Product back in its original packaging.
3. Make a copy of your sales receipt. The sales receipt must be from the location where you purchased your Product and must include the name of the business, its address, and the part number or description of the applicable Superchips Product. Invoices, credit card statements, or sales receipts from an online payment service company will not be accepted.
4. Return the Product in its original packaging with a copy of the sales receipt to the place of purchase.

Superchips, Inc.
Limited Warranty

What is Covered? This warranty covers any defects in materials or workmanship in any product sold by Superchips or its affiliates through its authorized dealers ("Product").

How Long Does the Coverage Last? This warranty lasts for one (1) year from the date of purchase. Coverage terminates if you sell or otherwise transfer ownership of the Product.

What will Superchips Do? Superchips will repair or replace the defective or malfunctioning Product or any defective or malfunctioning part thereof at no charge. This warranty covers parts and labor only. Superchips will reimburse you for all reasonable shipping charges within the first thirty (30) days of purchase.

What Does This Warranty Not Cover? This warranty does not cover any problem that is caused by abuse, misuse, acts of God, or improper installation or repair by non-Superchips personnel. This warranty does not cover Products purchased used nor does it apply to Products purchased from on-line auctions or entities that are not Superchips' authorized dealers. This warranty does not cover damage to your vehicle. Use of the Product to change the performance characteristics of your vehicle could invalidate the warranty provided by the vehicle manufacturer. Consult your vehicle warranty before using the Product on your vehicle. **SUPERCHIPS SHALL NOT BE LIABLE TO YOU FOR ANY CONSEQUENTIAL, SPECIAL, OR INCIDENTAL DAMAGES. SOME STATES DO NOT ALLOW THE EXCLUSION OR LIMITATION OF INCIDENTAL OR CONSEQUENTIAL DAMAGES, SO THE ABOVE LIMITATION OR EXCLUSION MAY NOT APPLY TO YOU.**

How Do You Get Service? If something goes wrong with your Product during the warranty period, use the following procedure to return the Product to Superchips.

1. Call Superchips' Customer Service at 1-888-227-2447 Monday through Friday from 8:00 am to 5:00 pm EST to request a Return Authorization ("RA") number.
2. Mark the outside of the shipping package with the RA number. Packages that are not marked with the RA number will be refused.
3. Make a copy of your sales receipt. The sales receipt must be from the location where you purchased your Product and must include the name of the business where you purchased the Product and the address of such business. Invoices, credit card statements, or sales receipts from an online payment service company will not be accepted.
4. Send the Product, postage paid, the copy of the sales receipt, a brief written description of the problem, and your contact information to:

Superchips, Inc.
 1790 East Airport Blvd
 Sanford, FL 32773
 Attn: Warranty Claims

We will inspect the Product and either repair it or replace it with a new or rebuilt Product. We reserve the right to use refurbished parts when making repairs.

Your Rights Under State Law: This warranty gives you specific legal rights, and you may also have other rights which vary from state to state.

Your Vehicle's STOCK Program

The FLASHPAQ Tuner stores a copy of your vehicle's original stock computer program.

To begin, your vehicle's computer must contain the manufacturer's STOCK factory program. If you have used a programmer from another aftermarket company you must use their product to return your computer back to STOCK condition before proceeding. If you have an aftermarket performance-enhancing electronic device installed, it must be removed prior to using the

About Maximum Trailer Weight

The original manufacturer of your vehicle has specified a Maximum Trailer Weight for your vehicle. It may be found in your vehicle owner's manual.

This Superchips product is designed to increase your engine power and performance. It does not change the engine, suspension or drive train characteristics that limit the maximum trailer weight your vehicle is designed to tow. Towing trailer weights above the maximum trailer weight specified by the vehicle manufacturer may cause transmission or other damage.

If you wish to tow greater than the maximum trailer weight for your vehicle, modifications to your vehicle may need to be made. Consult your performance auto mechanic for the proper vehicle modifications.

Damage caused by towing weights greater than the maximum trailer weight specified for your vehicle shall not be the responsibility of Superchips Inc.

Important Note Regarding Storage of Your *Flashpaq* Tuner

It is not recommended to store your FlashPaq Tuner in your vehicle in extreme heat, direct sunlight, or extreme cold (temperatures near or below freezing). These conditions can cause malfunction or damage to the FlashPaq Tuner not covered by the Superchips Inc. warranty.

Superchips FLASHPAQ Tuner.

Your Vehicle and Service Centers

If you need to return your vehicle to a service center, restore the vehicle's program to its STOCK program. The service center might reprogram your vehicle with an updated STOCK program without your knowledge. If your vehicle has not been returned to its STOCK program prior to service, the Superchips FLASHPAQ Tuner will no longer be able to program your vehicle. Such a failure is not covered by the Superchips Inc. warranty.

Vehicle Preparation

Before connecting the FLASHPAQ Tuner to your vehicle, make sure that:

- All power-draining accessories are turned off, including radio, lights, cell phones, etc., The FLASHPAQ Tuner needs full battery voltage to program your vehicle.
- Ensure your vehicle battery is fully charged and not connected to a battery charger.
- Do not leave the FLASHPAQ Tuner connected and unattended for any length of time. This prevents unnecessary battery drain.
- Do not remove the programming cable during any programming sequence. Please follow the FLASHPAQ Tuner display screens.
- Towing is only allowed using the Performance Tow tuning level.
- Do not tow with the Performance tuning level selected, it is NOT recommended.

Caution

Towing while the Performance tuning level is selected is not recommended and may cause damage to your vehicle. This damage is not covered by your vehicle warranty or by Superchips warranty.

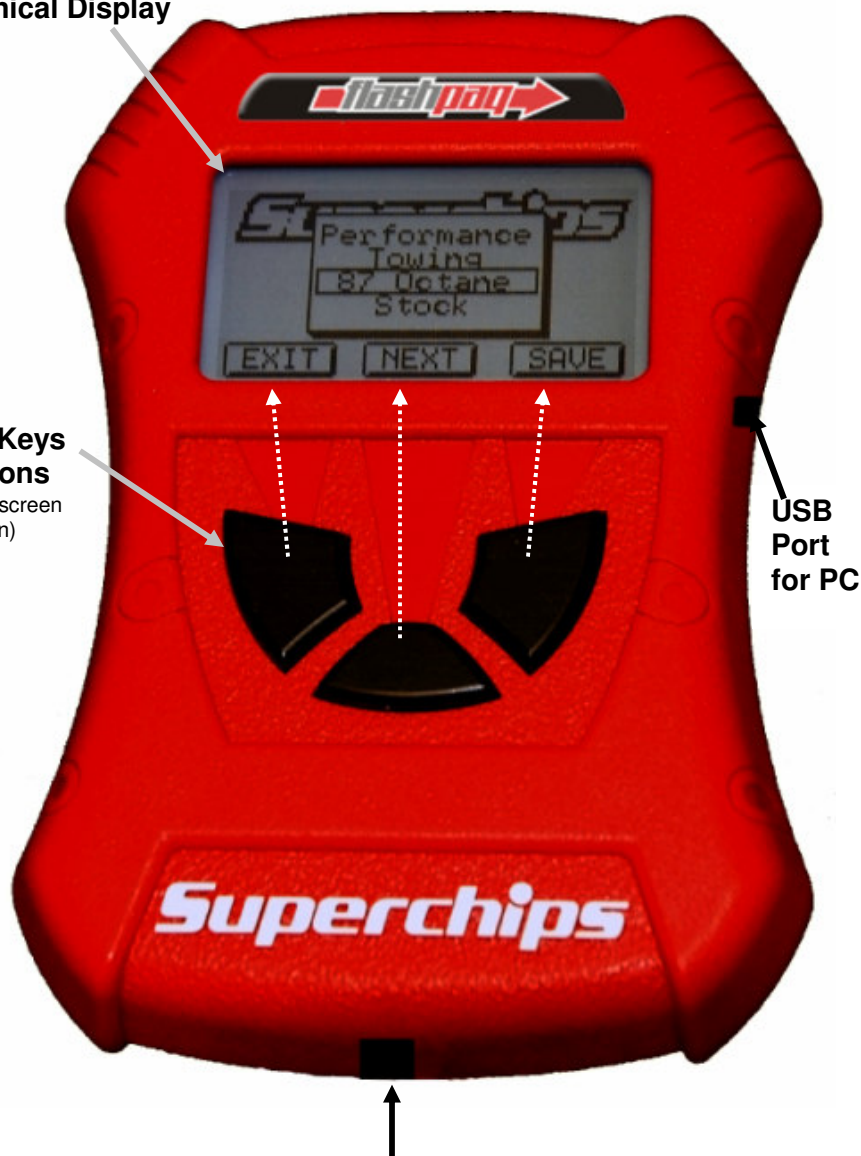
Section A – Overview of *flashpaq*

1. Understanding the hardware

Graphical Display

SoftKeys
Buttons
(Note screen
relation)USB
Port
for PC

Vehicle Cable

Section A – Overview of *flashpaq*2. Quick Start – Program my vehicle with Superchips tuning NOW!!!

Please follow the steps below to program your vehicle

- From the opening screen – Step 1
 - 1) Press ENTER – selects Performance Tuning
 - 2) Press ENTER – selects Read Vehicle
 - 3) Press ENTER – selects Read Stock
 - 4) Follow ON SCREEN – Vehicle Ignition Switch ON/OFF/ON
(DO NOT START VEHICLE!!)
 - 5) Press EXIT – returns you to Performance Tuning screen
- From the Performance Tuning screen – Step 2
 - 1) Press ENTER – selects Change Setup
 - 2) Press ENTER – selects Power Level
 - 3) Press DOWN as needed – highlights tuning level
 - 4) Press SAVE – selects the highlighted tuning level
 - 5) Press EXIT – returns you to Performance Tuning screen
- From the Performance Tuning screen – Step 3
 - 1) Press DOWN – highlights Program Vehicle
 - 2) Press ENTER – selects Program Vehicle
 - 3) Follow ON SCREEN – Vehicle Ignition Switch OFF/ON
(DO NOT START VEHICLE!!)

Upon completion, remove cable from vehicle –

Your vehicle is now programmed with Superchips tuning! You may now start your vehicle.

3. Quick Start – Program my vehicle with *User Options* NOW!!!

Please follow the steps below to program your vehicle

- From the opening screen – Step 1
 - 1) Press ENTER – selects Performance Tuning
 - 2) Press ENTER – selects Read Vehicle
 - 3) Press ENTER – selects Read Stock
 - 4) Follow ON SCREEN – Vehicle Ignition Switch ON/OFF/ON
(DO NOT START VEHICLE!!)
 - 5) Press EXIT – returns you to Performance Tuning screen
- From the Performance Tuning screen – Step 2
 - 1) Press ENTER – selects Change Setup
 - 2) Press ENTER – selects Power Level
 - 3) Press DOWN as needed – highlights tuning level
 - 4) Press SAVE – selects the highlighted tuning level
 - 5) Press ENTER – selects Options
 - 6) Press ENTER – selects Tire Size
 - 7) Press Minus or Plus – adjusts Tire Size Height
 - 8) Press SAVE – Saves Tire Size Height setting & exits
 - 9) Press EXIT – returns you back one screen
- From the Performance Tuning screen – Step 3
 - 1) Press DOWN– highlights Program Vehicle
 - 2) Press ENTER – selects Program Vehicle
 - 3) Follow ON SCREEN – Vehicle Ignition Switch ON/OFF/ON
(DO NOT START VEHICLE!!)

Upon completion, remove cable from vehicle –

Your vehicle is now programmed with Superchips and user options!
You may now start your vehicle.

4. Quick Start – Return my vehicle to *factory stock* NOW!!!

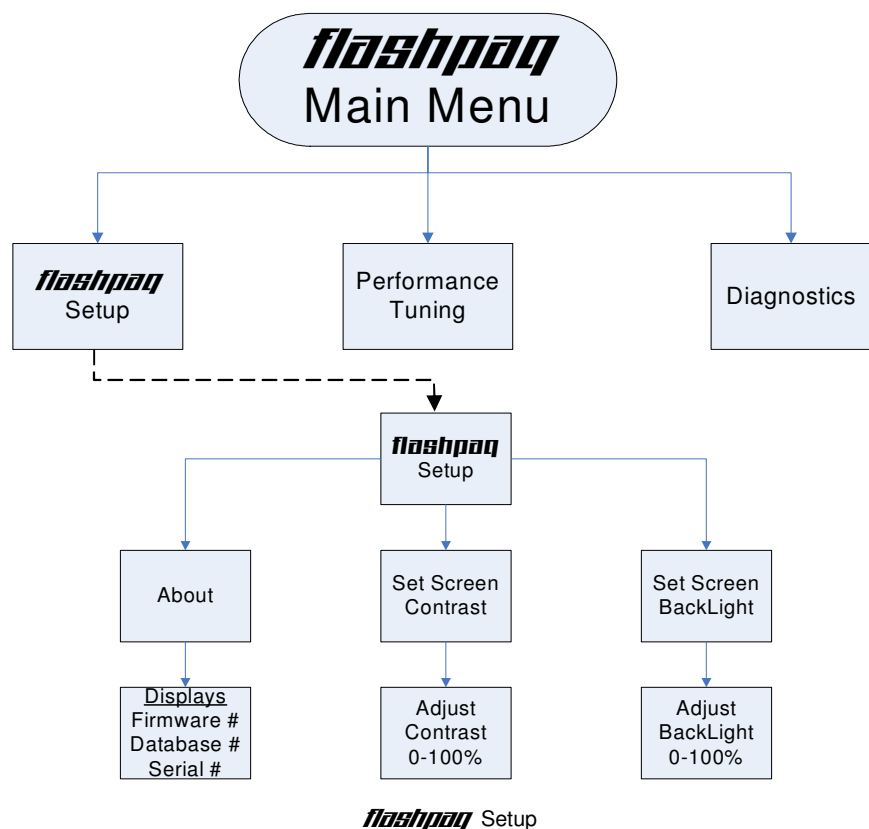
Please follow the steps below to program your vehicle

- From the opening screen – Step 1
 - 1) Press ENTER – selects Performance Tuning
 - 2) Press ENTER – selects Change Setup
 - 3) Follow ON SCREEN – Vehicle Ignition Switch ON/OFF/ON
(DO NOT START VEHICLE!!)
 - 4) Press DOWN
 - 5) Follow ON SCREEN – Vehicle Ignition Switch ON/OFF/ON
(DO NOT START VEHICLE!!)
 - 6) Press ENTER – selects Power Level
 - 7) Press DOWN as needed – select STOCK tuning level
 - 8) Press SAVE – selects the highlighted tuning level
 - 9) Press EXIT – returns you to Performance Tuning screen
- From the Performance Tuning screen – Step 2
 - 1) Press DOWN – highlights Program Vehicle
 - 2) Press ENTER – selects Program Vehicle
 - 3) Follow ON SCREEN – Vehicle Ignition Switch OFF/ON
(DO NOT START VEHICLE!!)

Upon completion, remove cable from vehicle –

Your vehicle's program is now returned to factory stock. You may
now start your vehicle.

5. Understanding the Menu Screens

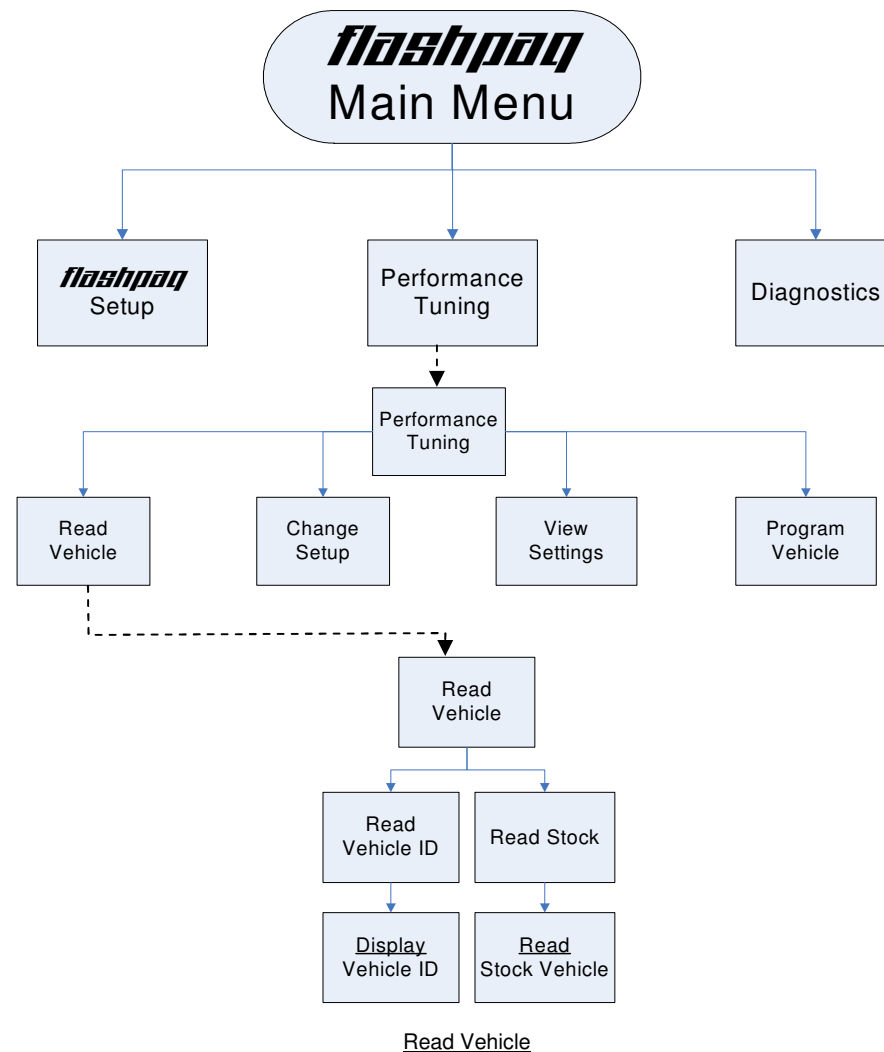


About: Displays Tuner Firmware Version, Database Version, Serial Number

Set Screen Contrast: Allows changes to screen text & graphics darkness

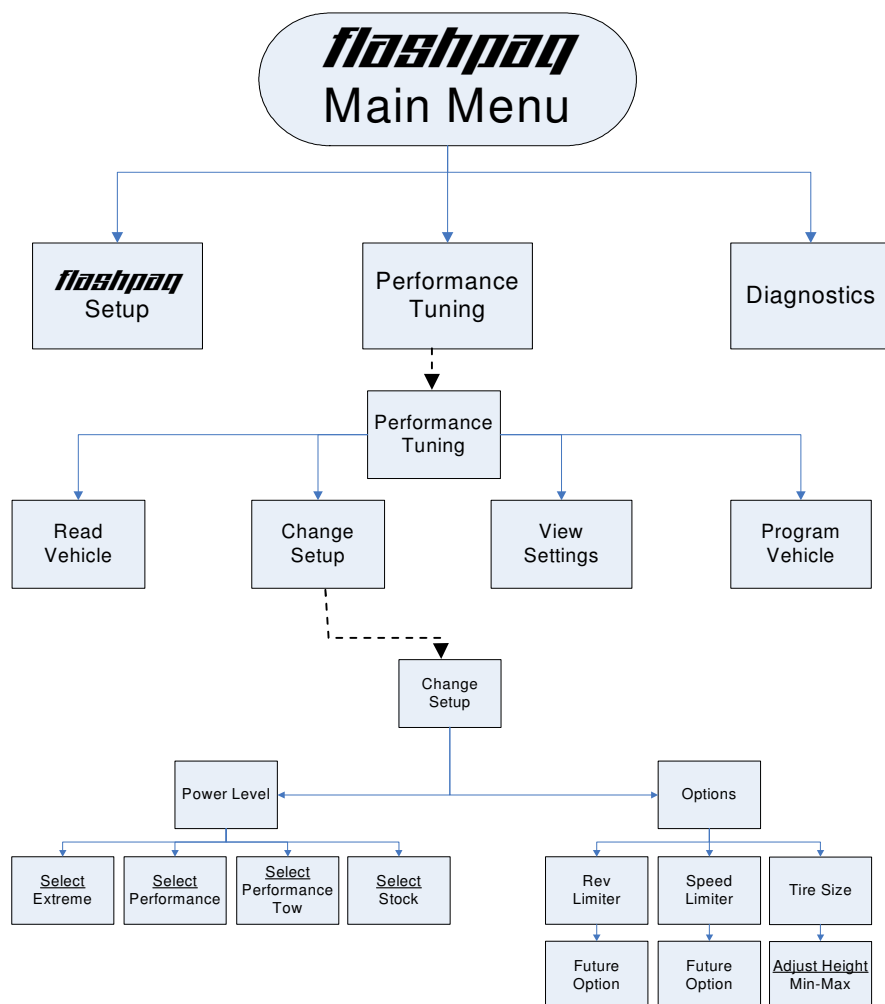
Set Screen BackLight: Allows changes to screen brightness level

(Adjustable for extreme viewing situations – direct sunlight, nighttime, low lighting)

Section A – Overview of *flashpaq*

Display Vehicle ID: Displays vehicle identification from the connected vehicle

Read Stock Vehicle: Reads the factory stock file(s) from the connected vehicle

Section A – Overview of *flashpaq*Change Setup – Power Level

Extreme: Selects Superchips Extreme tuning for engine & transmission

Note: Extreme is only available as a download through www.Superchips.com.

Towing is not recommended for the Extreme tuning level.

Performance: Selects Superchips Performance tuning for engine & transmission

Note: Towing is not recommended for the Performance tuning level.

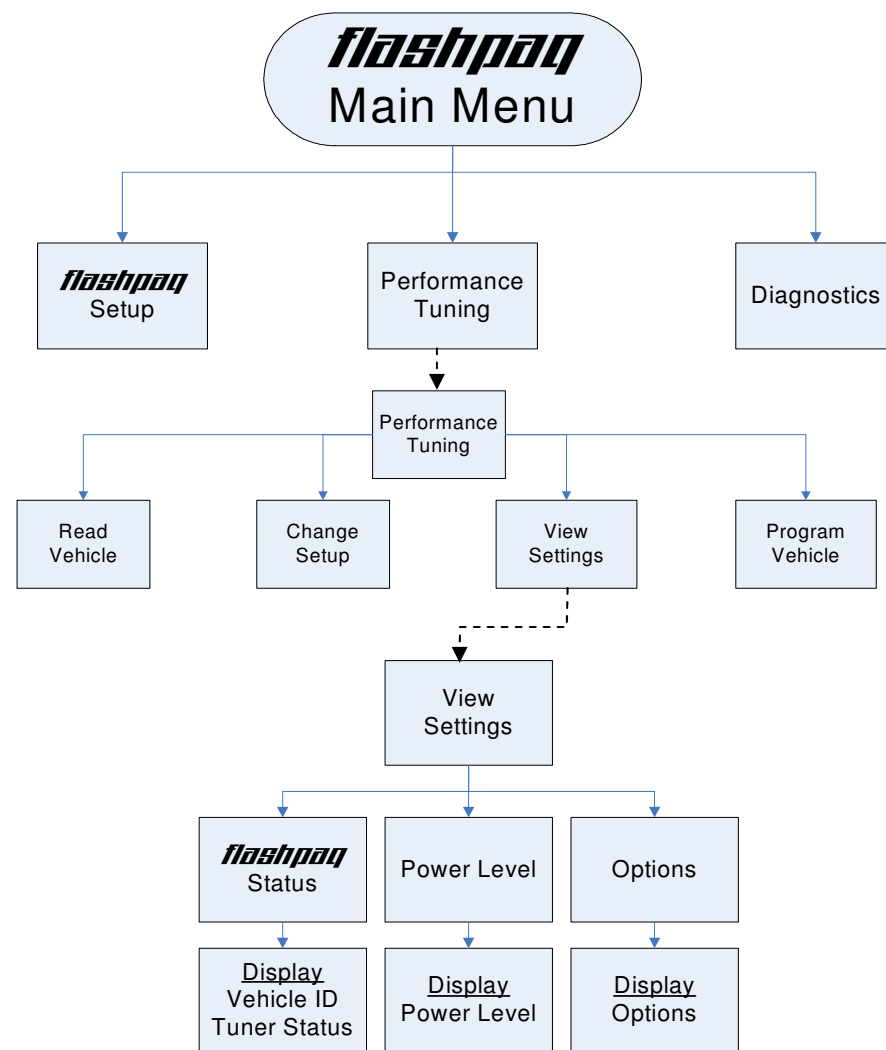
Performance Tow: Selects Superchips Performance Tow tuning for engine & transmission

Note: The Performance Tow tuning allows for towing up to the vehicle manufacturer's limits.

Stock: Selects factory stock tuning for engine & transmission.

Change Setup – Options

Tire Size - Adjust Height: Allows changes to vehicle tire height for speedometer correction.
(Adjustable in 1/4 inch increments)

Section A – Overview of *flashpaq*View Settings

Display Vehicle ID & Tuner Status: Displays stored vehicle ID & tuner programming status

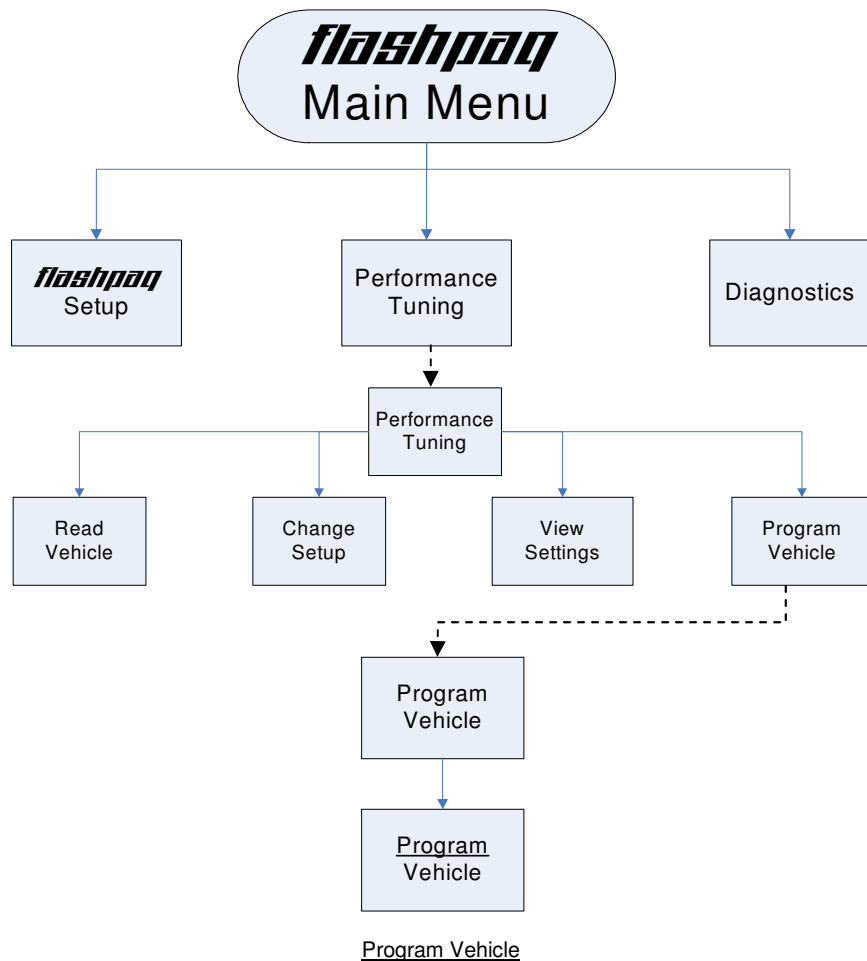
(This feature displays previously read data, no communications with the vehicle occur)

Display Power Level: Displays stored user selection from Change Setup - Power Level.

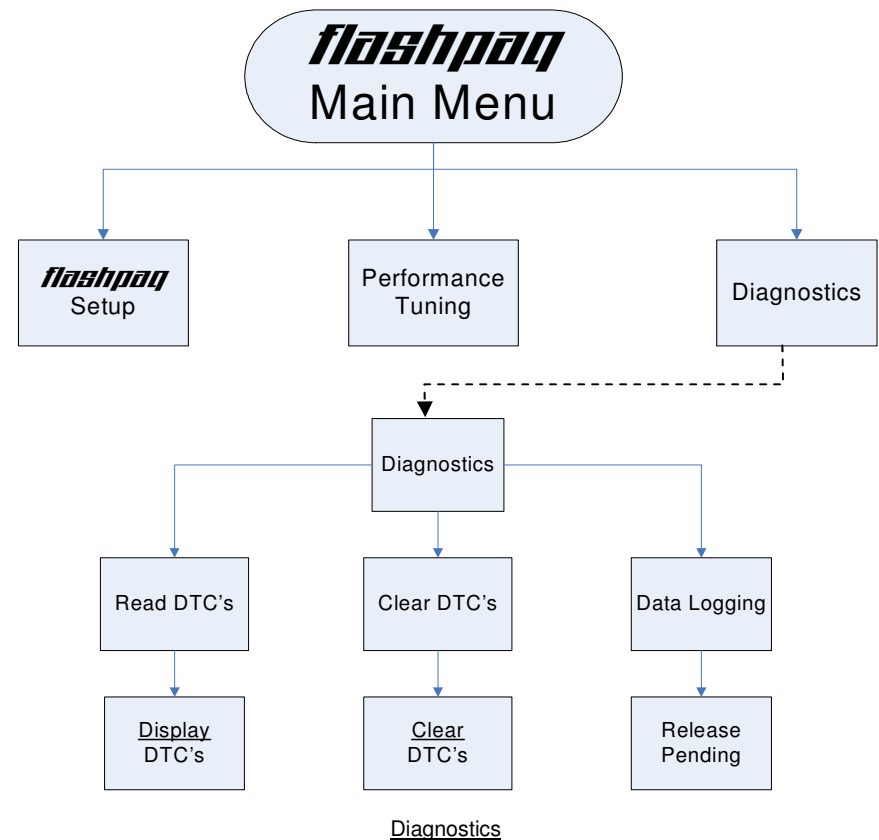
(This feature is for display only, to make changes see Performance Tuning - Change Setup)

Display Options: Displays current settings user has selected from Change Setup – Options.

(This feature is for display only, to make changes see Performance Tuning - Change Setup)

Section A – Overview of *flashpaq*

Program Vehicle: Programs vehicle based on Change Setup – Power Level and Options.
 (This feature is for live vehicle programming; an active vehicle connection to tuner is required.
 Superchips optimum tuning will be installed without modification unless the user changes settings in Power Level – Options)

Section A – Overview of *flashpaq*

Display DTC's: Reads & displays DTC's (Diagnostic Trouble Codes) from connected vehicle.
 (This feature is for live vehicle diagnostics; an active vehicle connection to tuner is required.
 Vehicle DTC's, if present, will be displayed along with a full text description, when available)
Clear DTC's: Clears current DTC's (Diagnostic Trouble Codes) from connected vehicle.
 (This feature is for live vehicle diagnostics; an active vehicle connection to tuner is required.
 Vehicle DTC's, if present, will be cleared. If DTC's reoccur, this could indicate a vehicle malfunction or problem condition)
Data Logging: Available 1st Quarter 2006

Section B – TROUBLESHOOTING**A. Blank Display Screen when plugged into vehicle**

Solution: Your diagnostic port may share power with the radio/cluster/underhood lamp fuse. Please check the owner manual & replace if bad, typically this fuse is labeled #51, 20 amp.

If a blown fuse is not found, check the pin connectors in your vehicle diagnostic connector. Make sure that none of these pins have been pushed out of the connector body.
(Note: Typically not all pins are present in this connector)

If still no resolution, plug your FLASHPAQ Tuner into another Dodge truck or Jeep. If the FLASHPAQ Tuner powers up, your truck has something wrong with either the pins/wiring harness or there is still a blown fuse in that circuit of the vehicle.

If your FLASHPAQ Tuner fails to power up on a second Dodge truck or Jeep, call Superchips Customer Service at 407-585-7000 to ask for a Return Authorization (RA) to send the FLASHPAQ Tuner in for inspection.

B. FLASHPAQ 'Tuner Requires an Update'

Solution: Your FLASHPAQ Tuner does not have the calibration files necessary to tune your vehicle; therefore a database update may be necessary.

- 1) Write down any screen prompted text, such as

**Tuner Requires
an Update...**

Call Superchips!

Use Code #E-XX (XX=a two digit number)
Or

Use Code #T-XX (XX=a two digit number)

Record this File

Name: XXXXXXXXXXXX

- 2) If you have internet access follow below, if not skip to step 4
- 3) From any PC running Windows 98SE or higher
 - a. Connect to the internet
 - b. Go to www.superchips.com
 - c. Click on "existing customers" link.
 - d. Follow on screen prompts
 - i. Plug in your supplied FLASHPAQ to PC USB cable
 - ii. Install software drivers, as prompted
 - iii. Run the application to update your tuner
 - iv. Close Internet
 - v. Disconnect tuner
 - vi. Return to vehicle for programming
- 4) Call Superchips customer service and request a RA #
 - a. Superchips will issue a RA #
 - b. Please include your Proof Of Purchase (POP)
 - c. Return ship the tuner to Superchips

C. Vehicle Requires a Factory (Dealer) Update

If your FLASHPAQ Tuner has found your vehicle box code and it is problematic to tune, the following messages will be displayed:

**Vehicle Requires
a Factory Update**

Call Superchips!

Use Code #E-XX (XX=a two digit number)

Record this File

Name: XXXXXXXXXXXX

Solution: Superchips has found that some stock applications have numerous problems that have been fixed with an updated stock program available from a dealer for your vehicle. An update of the stock program in your vehicle is required before your FLASHPAQ Tuner may be used on your vehicle.

You may call Superchips Customer Service for confirmation that a dealer updated file is available and instructions about how to have the stock files for your vehicle updated. Write down both the Code number (#E-XX) and the File Name XXXXXXXXXXXX and give this to the Superchips customer service representative.

D. Unsupported application

If your particular vehicle or engine type is not currently supported by the FLASHPAQ Tuner, the following error messages will be displayed:

**This application
is unsupported**

**currently! Call
us if incorrect.**

**Call Superchips!
Use Code #E-36**

Solution: Check year, model and engine to verify the FLASHPAQ Tuner being used is correct for the application. If not, return it to the dealer from which it was purchased for the correct FLASHPAQ Tuner. If the vehicle is correct for the FLASHPAQ Tuner being used, call Superchips Customer Service at 407-585-7000 for a Return Authorization number to send the FLASHPAQ Tuner in for inspection.

E. Non-Stock File Application

If the FLASHPAQ Tuner has checked your file and cannot match it to a stock file the following messages will be displayed:

**Vehicle File is
Not Stock...**

**Call Superchips!
Use Code #E-43**

Solution: This may be because another programmer has been previously used to reprogram the vehicle. The vehicle computer must be reprogrammed with a valid stock program before trying to use the Superchips FLASHPAQ Tuner. You may call Superchips Customer Service for instructions about how to have the stock files for your vehicle updated. Write down both the Code number (#E-XX) and the File Name XXXXXXXXXXXX and give this to the Superchips customer service representative.

F. Locked Vin Number

As long as FLASHPAQ Tuner programming is in a vehicle, the tuner is "locked" to that vehicle. If an attempt is made to use your "locked" FLASHPAQ Tuner on a different vehicle the following messages will be displayed:

**Locked VIN
is mismatched!**

**Not the Original
Vehicle/Program**

**Call Superchips!
Use Code #E-37**

Solution: Return the original vehicle back to stock before using the FLASHPAQ Tuner on a different vehicle or purchase another FLASHPAQ Tuner for use on a second vehicle.

G. Not original Program ID

If the FLASHPAQ Tuner is "VIN locked" to a vehicle and that vehicle has been updated at the dealership to a different Box Code (identification number) without first using the FLASHPAQ Tuner to *Return the Vehicle to Stock*, the following messages will be displayed:

**Not the Original
Program ID**

**Not the Original
Vehicle/Program**

**Call Superchips!
Use Code #E-38**

Solution: Your FLASHPAQ Tuner can only be unlocked if it is able to return the 'VIN locked' vehicle to stock. Since a dealership has replaced Superchips tuning with updated stock tuning, you will need to visit www.superchips.com and click on the FLASHPAQ icon.

H: Checksum Error

If the FLASHPAQ Tuner is "VIN locked" to a vehicle and that vehicle has been updated at the dealership to the same Box Code (identification number) without first using the FLASHPAQ Tuner to *Return the Vehicle to Stock*, the following messages will be displayed:

**Not the Original
Program Checksum**

**Not the Original
Vehicle/Program**

**Call Superchips!
Use Code #E-39**

Solution: Your FLASHPAQ Tuner can only be unlocked if it is able to return the 'VIN locked' vehicle to stock. Since a dealership has replaced Superchips tuning with stock tuning, you will need to visit www.superchips.com and click on the FLASHPAQ icon.

I. Upload Error

If the FLASHPAQ Tuner cannot detect the ignition is in the on position the following messages will be displayed:

**Problem with
uploading!**

Please retry

**Call Superchips!
Use Code #E-XX** (XX=a two digit number)

Solution: Make sure Ignition is ON (**DO NOT START VEHICLE!**). Retry again. It is possible that your vehicle's battery charge is low, please check and correct, if necessary.

J. Ignition ON Error

If the FLASHPAQ Tuner cannot detect that the ignition is in the ON position, the following messages will be displayed:

**Cannot Detect
Ignition On**

Please retry

**Call Superchips!
Use Code #E-31**

Solution: Make sure Ignition key is turned completely forward in the ON position (**DO NOT START VEHICLE!**). Check to see if pins are pushed out of the diagnostic connector. It is possible that your vehicle's battery charge is low, please check and correct, if necessary.

K. Communications Error

If the FLASHPAQ Tuner loses communications the following messages will be displayed:

**Communications
Error!!!**

Please retry

**Call Superchips!
Use Code #E-XX**

Solution: Make sure Ignition is ON (**DO NOT START VEHICLE!**). Retry again. It is possible that your vehicle's battery charge is low, please check and correct, if necessary. If it still fails, then contact Superchips. The FLASHPAQ Tuner will need to be returned to Superchips.

Frequently Asked Questions (F.A.Q.)

L. The FLASHPAQ Tuner did not program same number of files as saved

This is normal. The FLASHPAQ Tuner communicates with all the necessary modules on the vehicle to gain the information needed to correctly operate. It may be necessary to save additional files that are not programmed to allow for correct tuning.

M. My friend's truck has the same engine but programs or reads at different speeds.

Each vehicle configuration has been optimized to the fastest and safest method of operation. Your friend's truck may have different types of vehicle computers in his truck which may require more or less time to do certain operations.

N. Why do similar vehicle types have different numbers of files?

Even similar vehicles can have different configurations and quantities of computers. The FLASHPAQ Tuner communicates with all the necessary computer modules in the vehicle to gain the information needed to operate correctly.

O. My friend's truck has the same engine but is tuned differently, why?

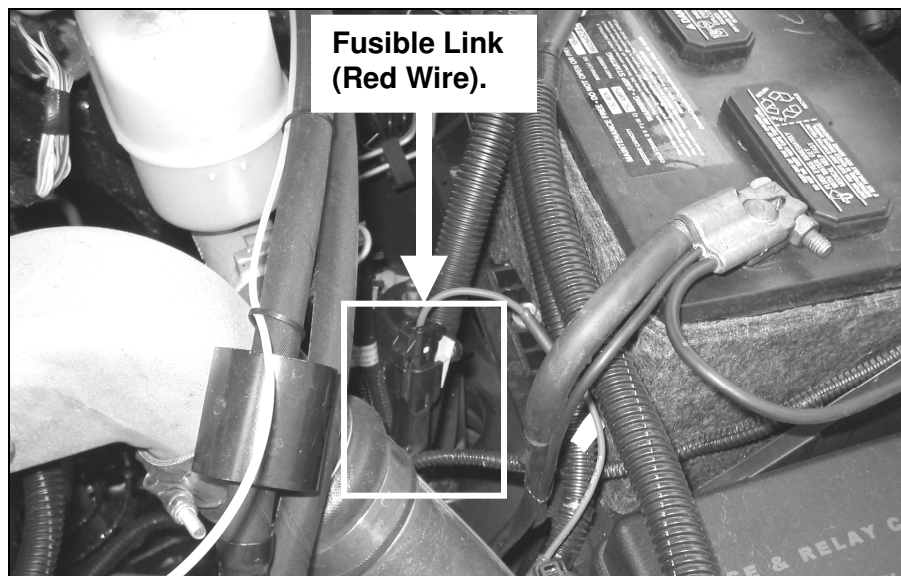
Each vehicle configuration has been optimized for the best tuning. Your friend's truck may have different types of vehicle computers, thus requiring different tuning.

Recovery Procedure

In the event of an error during a programming sequence, the FLASHPAQ Tuner will attempt to recover the vehicle to the original stock program. It is necessary to carefully follow the screen prompts, possibly requiring multiple "Ignition OFF" and "Ignition ON" sequences, to correctly return the vehicle to stock settings. See below for model year specific details.

2005 Ram Cummins Recovery Procedure

Following the on screen prompts, turn ignition off, disconnect the fusible link (RED wire) See picture below for detailed location. When prompted re-connect fusible link, then when prompted turn ignition back on.

**2006 Ram Cummins Recovery procedure**

Following the tuner's on screen prompts.

Error Notification

When recovery is completed your vehicle is returned to factory stock. You are now able to start your vehicle normally. You may now attempt to use the FLASHPAQ Tuner to program your vehicle again or to program another vehicle (the tuner is now reset and not locked to a vehicle). Follow the on-screen prompts. In the event that recovery is unsuccessful, or for any reason the FLASHPAQ Tuner fails to complete its programming cycle, an error message will be displayed on the unit. Please make note of the message displayed and contact Superchips Customer Service.

If it is necessary to return your *Flashpaq* Tuner to **Superchips**, please take a moment and fill out this form. The following information will be necessary to process your request.

Check list:

Complete this form and have it available when you contact **Superchips**.

Contact **Superchips** Customer Service @ 407.585.7000 to obtain an RA number.

If an RA number has been issued, enter the RA number on the bottom of this form.

Attach a photocopy of your purchase receipt to this form.

Attach this form to the product being returned to **Superchips**.

Name: _____

Street Address: _____

City: _____ State: _____ Zip: _____

Home Phone: _____ Other phone: _____

Place of purchase: _____

Date of Purchase: _____

Vehicle Year: _____ Vehicle Make: _____

Vehicle Model: _____

VIN Number: _____

Transmission: Automatic Manual

Tuner model: _____

Serial number on back of your FlashPac: _____

E-mail address: _____

RA Number: _____

Prior to returning any product to **Superchips**, you must obtain an RA number; please contact **Superchips** customer service at 407.585.7000.

Please attach a photocopy of sales receipt here.