



AirTV-1000U

DVB-T USB 2.0 Receiver

User's Manual



Table of Contents

Chapter 1: Introduction	3
Chapter 2: Software Installation Guide.....	4
2.1 Verifying System Requirements	4
2.2 Installing AirTV-1000U.....	4
Chapter 3: Main Control Panel	9
3.1 Buttons/Icons.....	9
3.2 Main Function	9
3.3 Number Pad.....	10
3.4 Display Area.....	10
Chapter 4: Main Function Description - Setup (Configuration menu)	11
4.1 General Setting	11
4.2 Scan Channel Setting	12
4.3 Record Setting	13
4.4 Display Setting	16
4.5 Capture	16
4.6 Skin	16
4.7 Time Shift.....	16
4.8 Information.....	17
Chapter 5: EPG (Electronic Program Guide).....	17
Chapter 6: Play files.....	18
Chapter 7: Time Shift	18
Chapter 8: My Favorite.....	18
Chapter 9: Teletext	18
Chapter10: Multi-Channel Preview	19

Chapter 1: Introduction

Welcome to AirTV-1000U

AirTV-1000U is advanced software designed especially for viewing and recording digital television programs, which can be received via a personal computer. Recordings can be made while viewing the programs or prescheduled in advance.

AirTV-1000U includes the following main features

- **Digital TV & Radio receiving (DVB-T)**
 - Watch digital Terrestrial TV programs on your PCs
 - Listen to digital stereo radio
- **High Definition & Crystal Clear Video Quality**
 - Support HDTV receiving
 - 4:3 & 16:9 selectable aspect ratio
- **Recording and playback**
 - Instant & pre-scheduled record programs as MPEG II format
 - Wake Up Schedule Recording
 - Playback media files
 - Record transport stream
- **TV Function**
 - SAP (Language option)
 - Electronic Program Guide (EPG)
 - Transponder, region, and Frequency range Auto Scan
 - Multiple Frame Capture
 - Multi Channel Preview
 - Favorite List
 - Hot Keys
 - DVB Subtitle
- **Video control**
 - Brightness/ Contrast/Hue/Saturation control
- **Skin : Default / Professional**
- **Full Function remote control (Option**
- **Tele text**
 - Tele text / Subtitle
- **Time shift**
- **EPG (Electronic Program Guide)**

Chapter 2: Software Installation Guide

The *Software Installation Guide* explains how to install and uninstall AirTV-1000U Player.

2.1 Verifying System Requirements

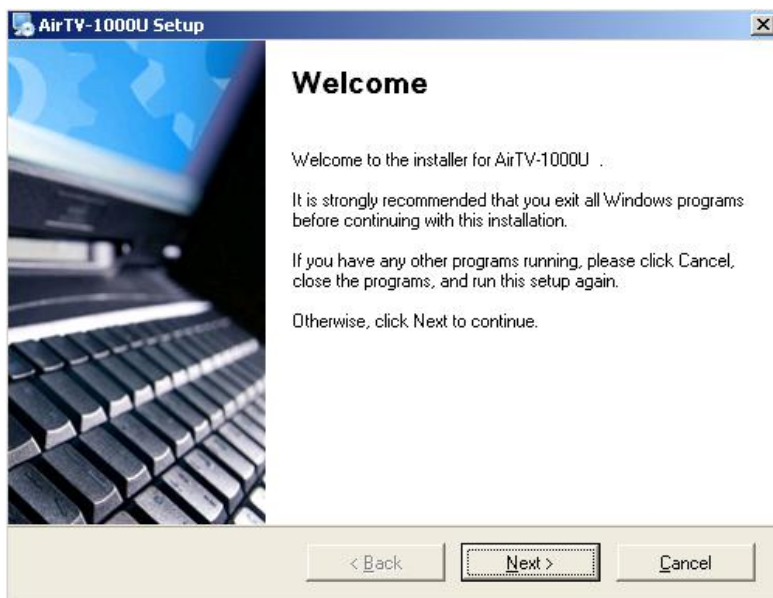
Please make sure your system meets the following minimal requirements before installation.

- **Operating System:** Microsoft Windows 2000 with Service Pack4, Windows XP with Service Pack 2
- **Screen Resolution:** 1024 x 768 or 1280 x 1024
- **Processor:** MMX/SIMD/3D Now! Instruction set (1GHz)
- **Memory:** 256MB RAM or above.
- **Hard Disk Space:** At least 1GB
- **Graphics Card:** AGP or PCI Express graphic accelerator with DirectDraw Overlay Support
- **DirectX 9.0:** DirectX 9.0c or higher environment

2.2 Installing AirTV-1000U

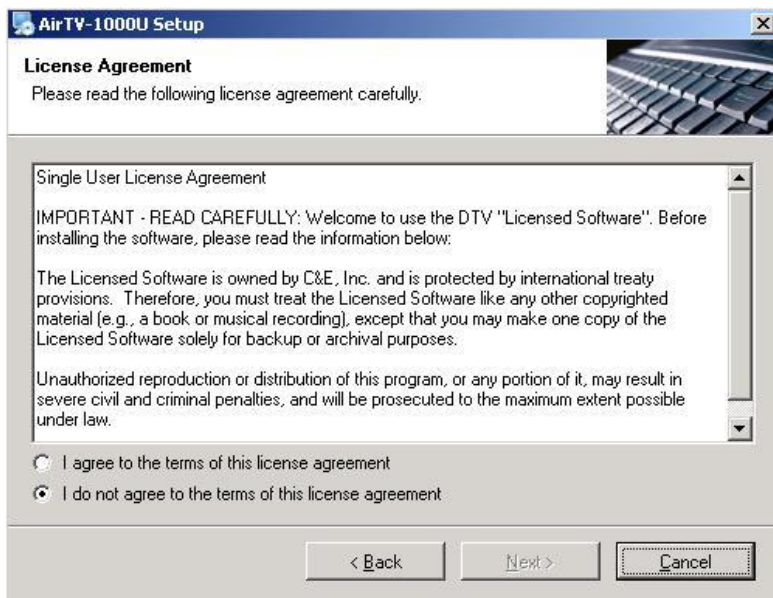
Double-click **setup.exe** icon 

A.



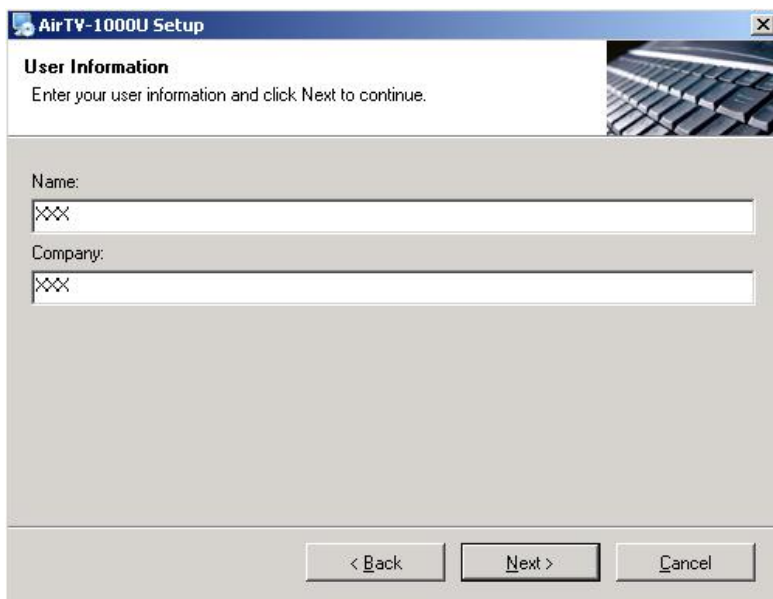
Click **Next** to continue

B.



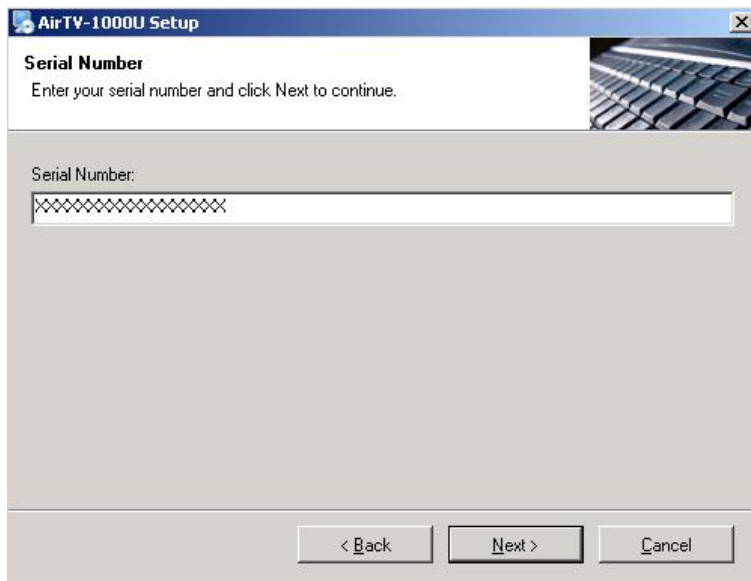
Please read the license agreement and choose” **I agree to the terms of license agreement**”, then click the **Next** to continue.

C.



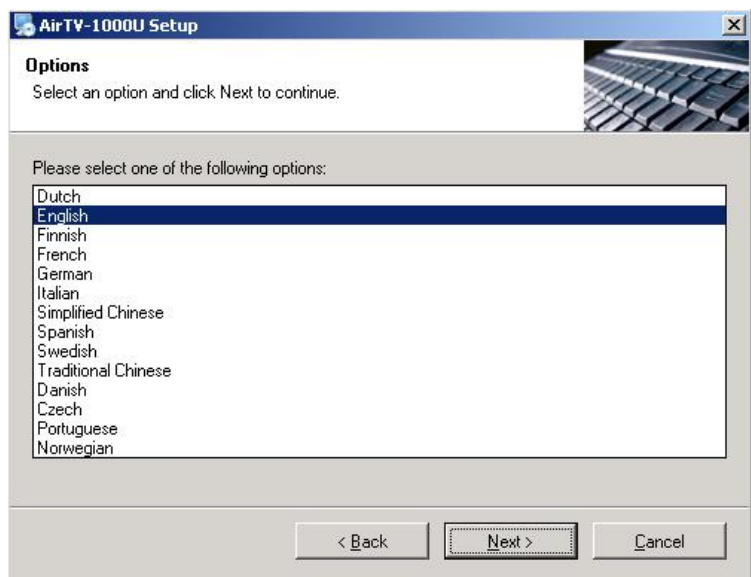
Please enter your information and then click **Next** to continue.

D.



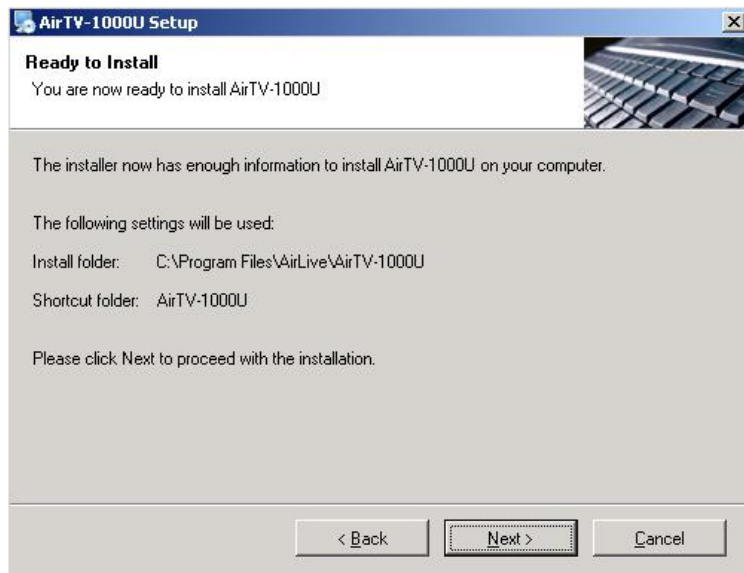
Please type your serial number and then click **Next** to continue.
(Note: You can find the SN on the CD sleeve)

E.



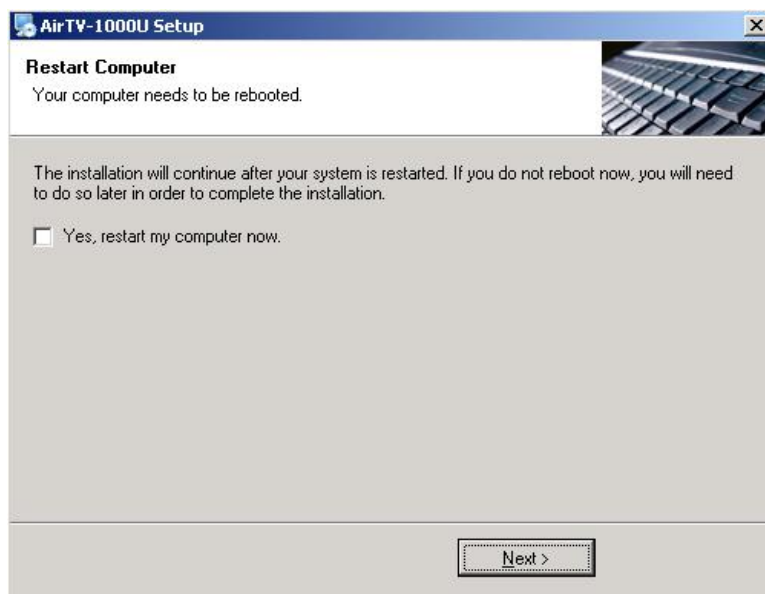
Please select language you want to install and then click **Next** to continue

F.



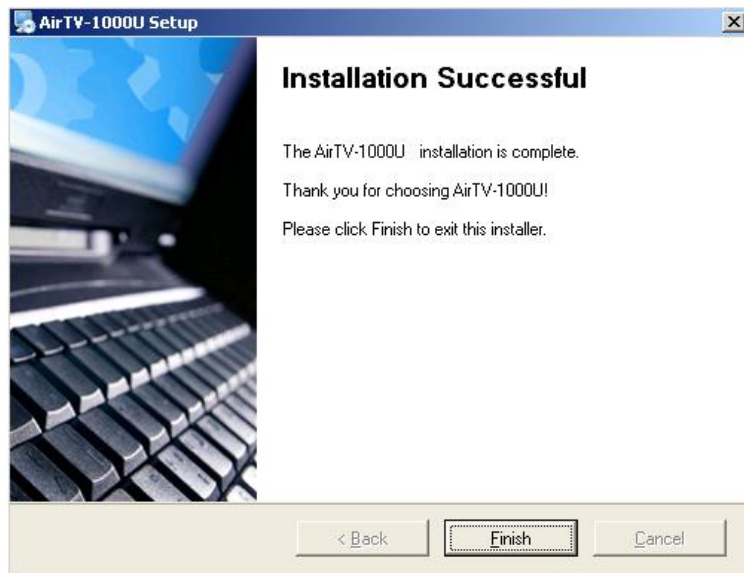
Now you are ready to install, please click **Next** to proceed with the installation.

G.



The installation will be completed after your system is restarted

H.



Click the **Finish** to exit the installation.

Chapter 3: Main Control Panel

3.1 Buttons/Icons



Full/Window Screen

Shuttle Adjust volume

Play



Pause



Record



Backward



Forward



Stop



Grab Image



Minimize to taskbar



Exit/End program



Volume up



Volume down



Mute On/Off

3.2 Main Function



Tele text



Favorite List



Time Shift



Open File



EPG



Setup

3.3 Number Pad



Clear input



Next Channel



Multi Channel



Recall



Return to TV



Previous Channel

Preview

3.4 Display Area



Display volume status



Mute



Display current status



Display RF strength



Display RF quality



Display media type



Display channel number



Display TimeShift playing time



Display playing speed



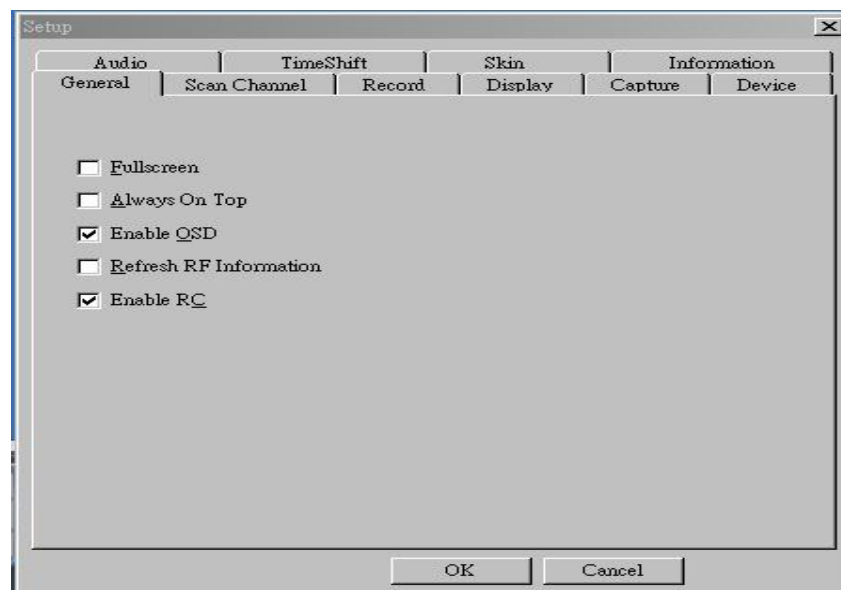
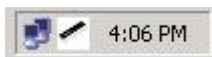
Display file name or name of external device



Chapter 4: Main Function Description - Setup (Configuration menu)

4.1 General Setting

- **[Full Screen]** Check to play TV programs in full screen mode.
- **[Always On Top]** With this feature you can make sure the video playback window always run on top of other program applications and never be covered by other windows.
- **[Enable OSD]** Check to enable OSD.
- **[Refresh RF Information]** Check to refresh RF information. The RF power and RF quality will be refreshed according to the detected RF information.
- **[Enable RC]** Show to the toolbar.



4.2 Scan Channel Setting

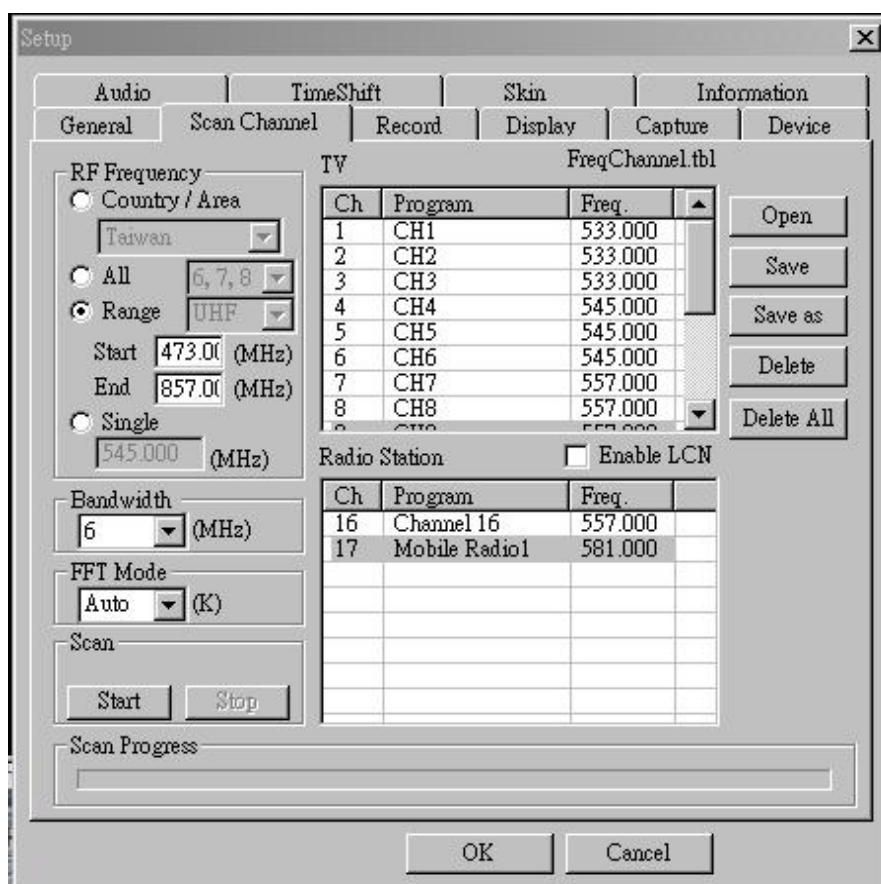
- **RF Frequency:** You can do the RF Frequency scan by selecting “Country/Area”, “All”, ” Range” and “Single”.

[Country/Area] Select a country or area where you are located at.

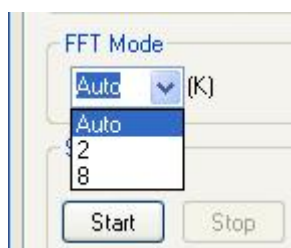
[All] scanning channels within the bandwidth you selected.

[Range] Define a specific range to search available channels.

[Single] Scan a specific frequency.



- **Bandwidth:** Select a bandwidth value used in which you located.
- **FFT Mode:** Set up the transmit mode. The default value is Auto.



- **Scan:** Start or stop channels scanning.
- **Scan Progress:** View the scan progress.
- **TV:** Display scanned TV program list

TV FreqChannel.tbl

Ch	Program	Freq.
3		533.000
4	PTS	545.000
5	DIMO	545.000
6		557.000
7		557.000
8		557.000
9	TTV-2	581.000
10	TTV-1	581.000
11	HAKKA	581.000
12	CTS	593.000

- **Radio Station:** Display scanned Radio program list

TV FreqChannel.tbl

Ch	Program	Freq.
3		533.000
4	PTS	545.000
5	DIMO	545.000
6		557.000
7		557.000
8		557.000
9	TTV-2	581.000
10	TTV-1	581.000
11	HAKKA	581.000
12	CTS	593.000

4.3 Record Setting

There are two ways to record programs: **Instant Record** and **Preset Record**.

This section will introduce how to preset a recording schedule.

Storage Resource: Show all free spaces in your hard disks.

Save To: Set recording path

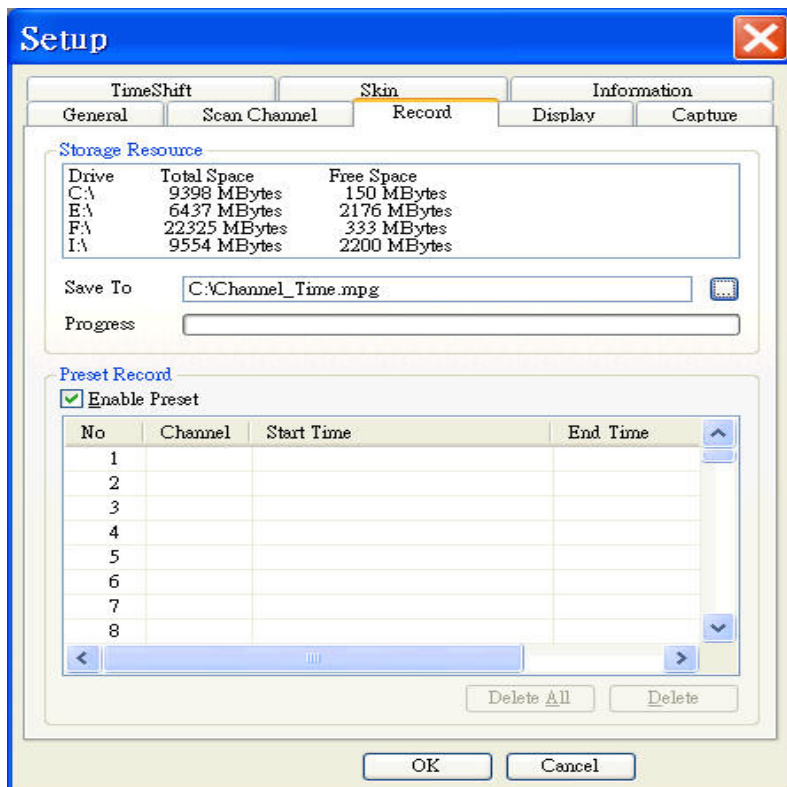
Progress: Display recording progress

Enable Preset: Activate pre-schedule recording.

Delete all: Delete all pre-scheduled programs

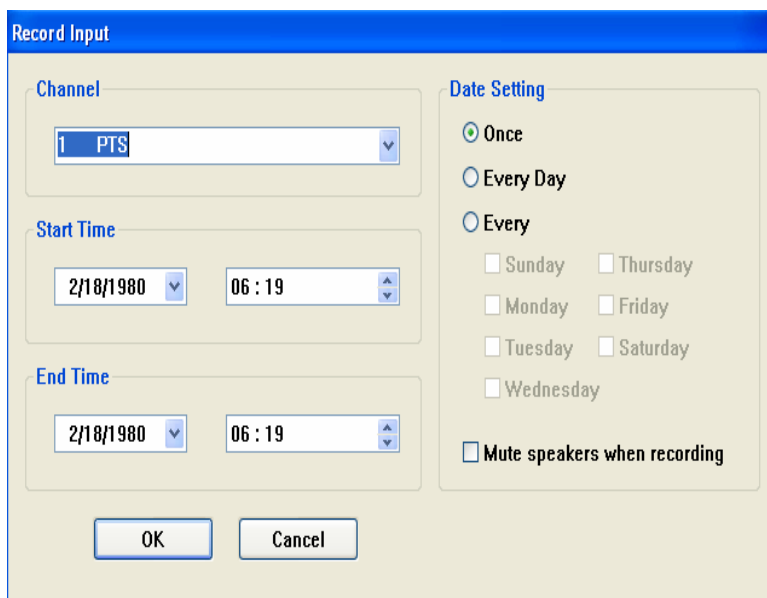
Delete: Delete a pre-scheduled program

NOTE: You can not record two different programs at the same time. The interval between two preset record entries should be at least one minute. To prevent disk insufficiency during recordings, please verify your storage resource capacity



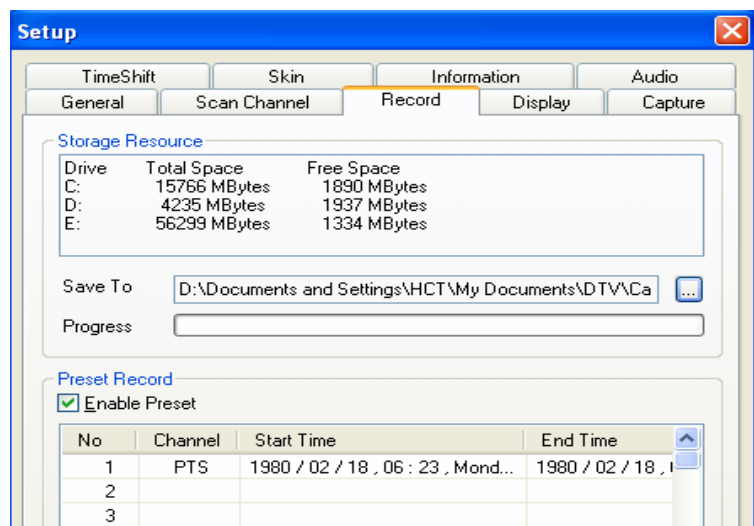
How to preset Recording Schedule?

- Check **Enable Preset**
- **Double click** on the empty schedule, A **Record Input** window will pop out as below

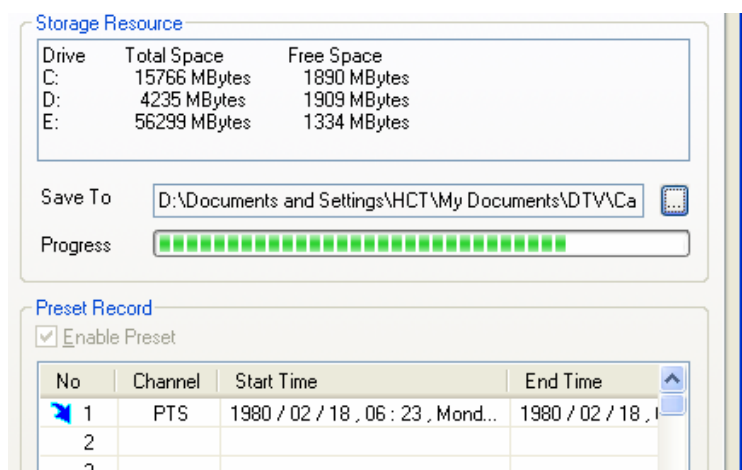


- Select a channel, and set Start/End time.

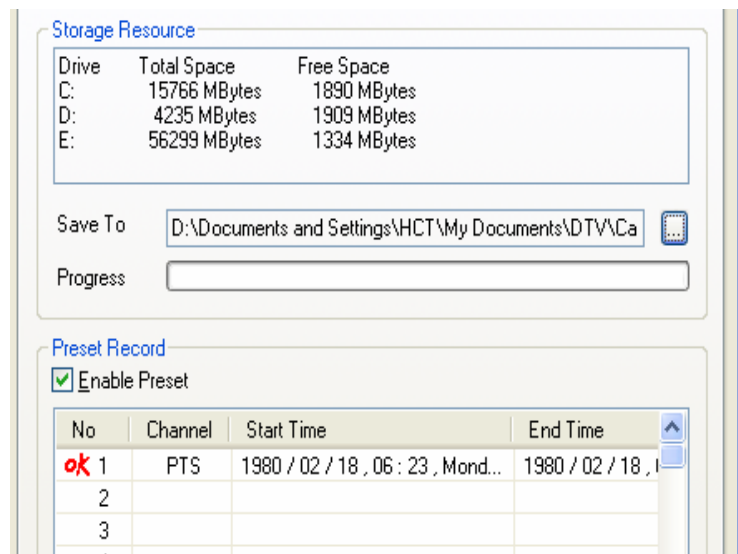
- After done the setting, it will show on the preset schedule list



- Recording progress

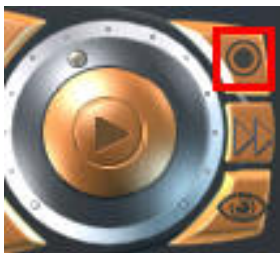


- Preset Recording completed.



Instant Record

When a program is playing, click the "Record" button on the panel or inside the main function menu to begin recording instantly while continuing viewing the program



Play	Enter
Pause	Space
Stop	S
Record	R
Mute	M

4.4 Display Setting

- **[Brightness]** Adjust image brightness
- **[Contrast]** Adjust image contrast
- **[Hue]** Adjust image hues
- **[Saturation]** Adjust image saturation
- **[Reset]** Restore to default setting

4.5 Capture

Images capture support BMP & JPEG file format.

4.6 Skin

- **Type A (Default)**
- **Type B (Professional)**

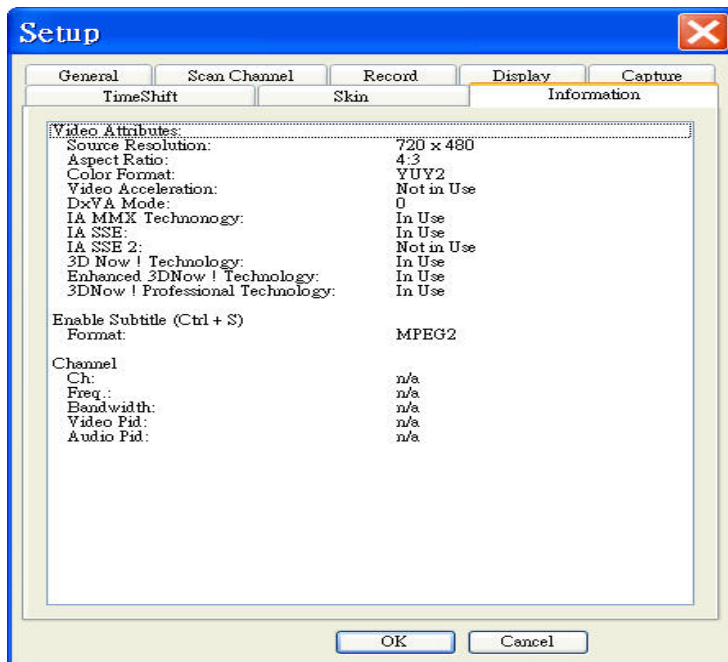


4.7 Time Shift

Time shift is a non-linear recording and playback system.

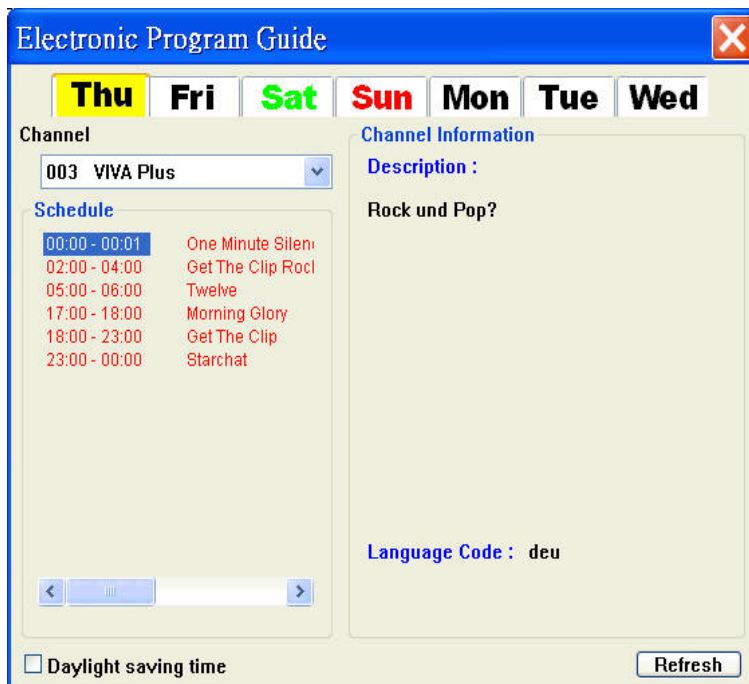
Simultaneously recording and watching TV is incredibly easy with the timeshift function.

4.8 Information




Chapter 5: EPG (Electronic Program Guide)

The Electronic Program Guideline provides instant program information. When you click on the control panel's "EPG" button, the following image will appear (this function is only available with certain television stations).




Chapter 6: Play files

All recorded or captured files can be played by this AirTV-1000U software AP.

Click  on the main faceplate, an open file windows will pop out on the desktop.

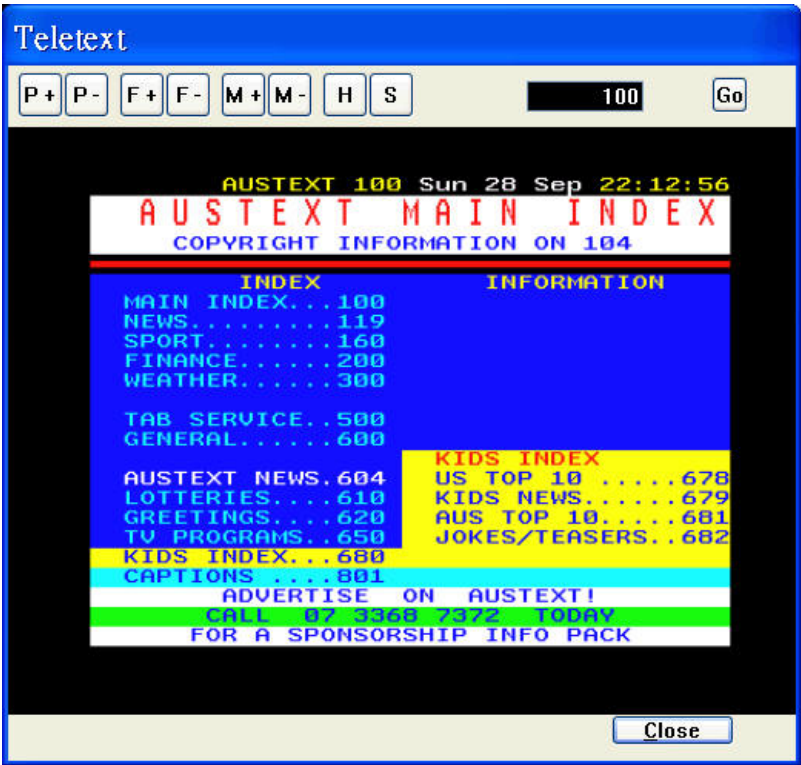
Chapter 7: Time Shift

Chapter 8: My Favorite

It allows users to edit their own favorite channel list, by simply click , a favorite TV/Radio program windows will pop out

Chapter 9: Teletext

Teletext is a form of text broadcasting. When you click on the control panel's "T" button, the following image will appear (this function is only available with certain television stations.)



Chapter10: Multi-Channel Preview

AirTV-1000U provides a fast channel browsing function. When you click on the "Multiple channel preview" item on the panel or inside the main function menu, the following image will appear.

