

# **SNMP Manager**

User's Manual

# Table of Contents

<b>1.</b>	<b>Introduction.....</b>	<b>1</b>
<b>2.</b>	<b>SNMP Manager Install, Quick Start and Uninstall .....</b>	<b>1</b>
2.1.	Software Installation .....	2
2.2.	Software Quick Start.....	2
2.3.	Software Uninstall .....	2
<b>3.</b>	<b>SNMP Manager GUI.....</b>	<b>3</b>
<b>4.</b>	<b>SNMP Manager Function Menu .....</b>	<b>7</b>
4.1.	System .....	7
4.1.1.	Login.....	7
4.1.2.	Logout .....	7
4.1.3.	Quit.....	7
4.2.	Settings .....	8
4.2.1.	Basic Info .....	8
4.2.2.	IP Setting .....	8
4.2.3.	Online upgrade.....	11
4.2.4.	Password management.....	14
4.2.5.	Static trap address.....	15
4.3.	Language.....	16
4.4.	Help.....	17

## 1. Introduction

SNMP Manager is a plug-in for ViewPower Pro software. Users can search and operate all SNMP devices in the LAN via this interface. Then, ViewPower Pro will automatically search and monitor these SNMP devices.

## 2. SNMP Manager Install, Quick Start and Uninstall

Supported OS:

- Windows 2000
- Windows XP/2003/Vista/2008 (32-bit & x64-bit)
- Windows 7(32-bit & x64-bit)
- Linux RedHat 8, 9
- Linux RedHat Enterprise AS3, AS5, AS6 (32-bit)
- Linux SUSE 10 (32-bit)
- Linux Cent OS 5.4 (32-bit)

- Linux Ubuntu 8.X, 9.X, 10.X (32-bit)
- Linux Fedora 5
- Linux OpenSUSE 11.2 (32-bit)
- Linux Debian 5.x, 6x (32-bit)
- Mac OS 10.6(x64-bit)
- Mac OS 10.7(x64-bit)
- Solaris 10 for x86 (32-bit)

## 2.1. Software Installation

Install the ViewPower Pro software bundled inside of SNMP agent package.

## 2.2. Software Quick Start

To launch SNMP Manager, choose "SNMP Manager" by clicking right button of the mouse.

Refer to Diagram 2-1.



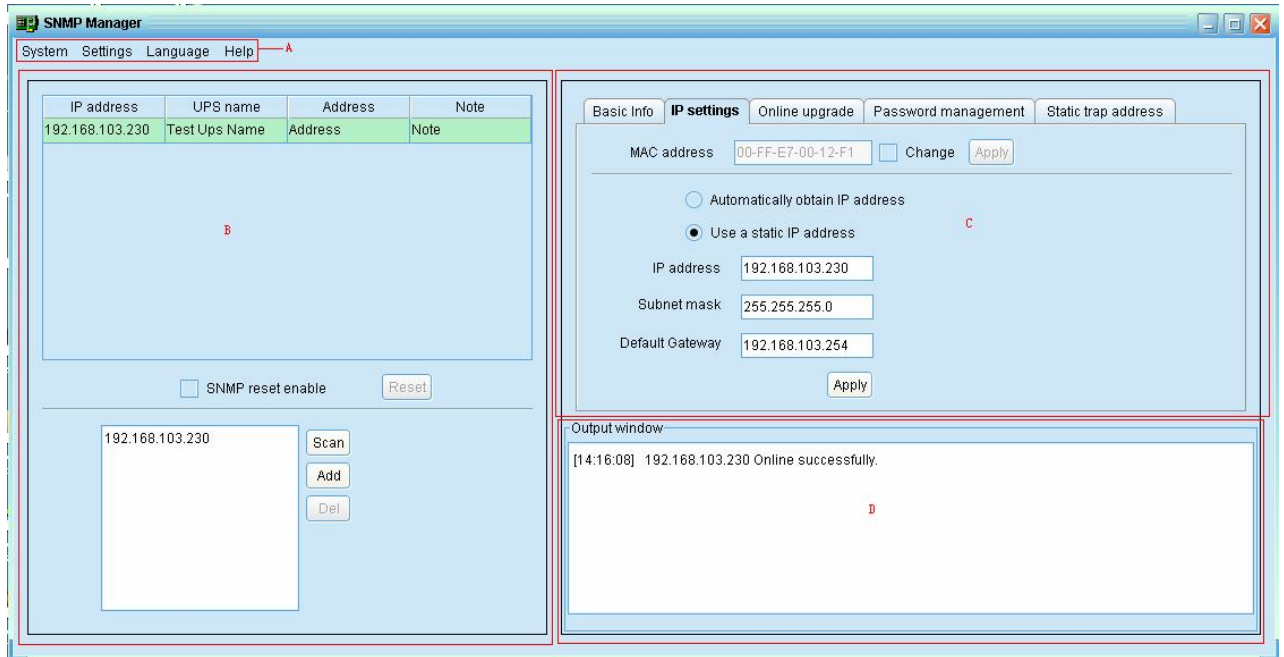
**Diagram 2-1**

## 2.3. Software Uninstall

Since SNMP Manager is a plug-in of Viewpower Pro software, it's impossible to uninstall it only.

## 3. SNMP Manager GUI

The GUI has four sections as marked in the illustration below:



**Diagram 3-1**

- A. Function menu** offers complete tool-set for navigating and setting the GUI.
- B. SNMP device list** can list down all SNMP devices located in current IP address.
- C. Configuration area** includes IP settings, online upgrade, password management, and static trap address.
- D. Output window** displays all messages for operations

### 3.1. SNMP Device List

The default value in window list would be current PC IP address. For example, if IP address of current PC is "192.168.102.10", it will display "192.168.102" in list when first enabling SNMP Manager.

#### 3.1.1. Scan

You may enter specific IP address and then click "Scan" button to search.

### 3.1.2. Add IP Address

Click "Add" button and it will pop up a window to ask for entering specific IP address. Then, click "Apply" button to add IP address (Subnet). Refer to Diagram 3-2.

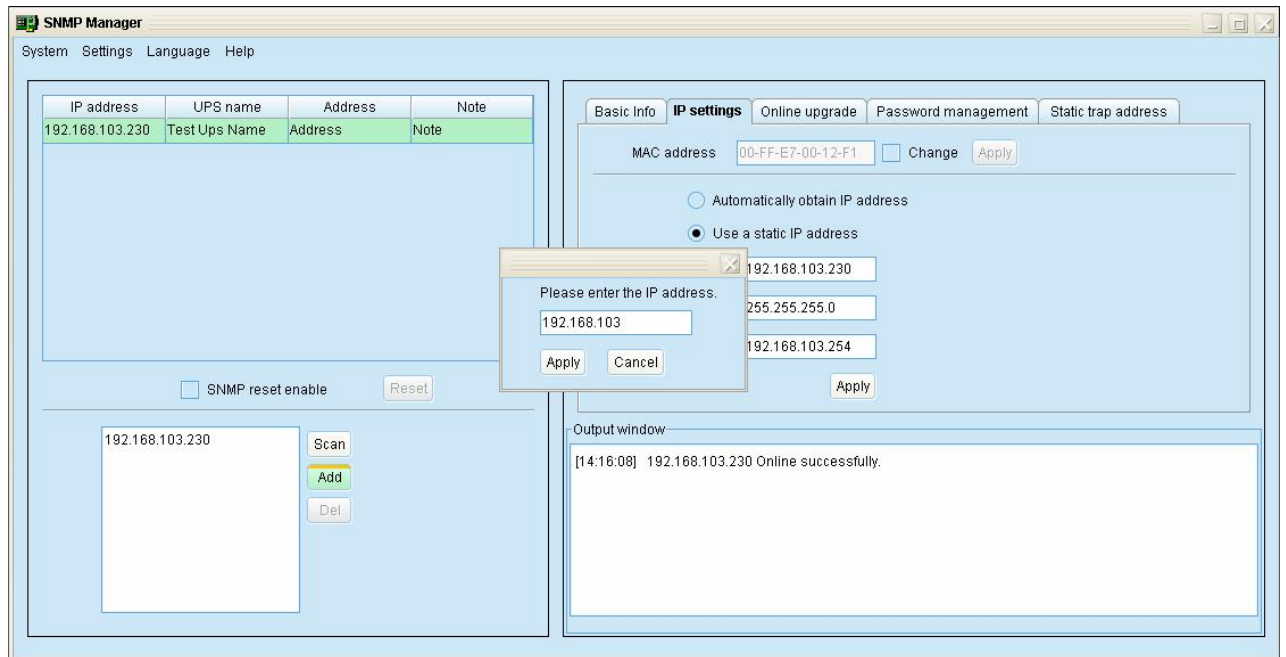


Diagram 3-2

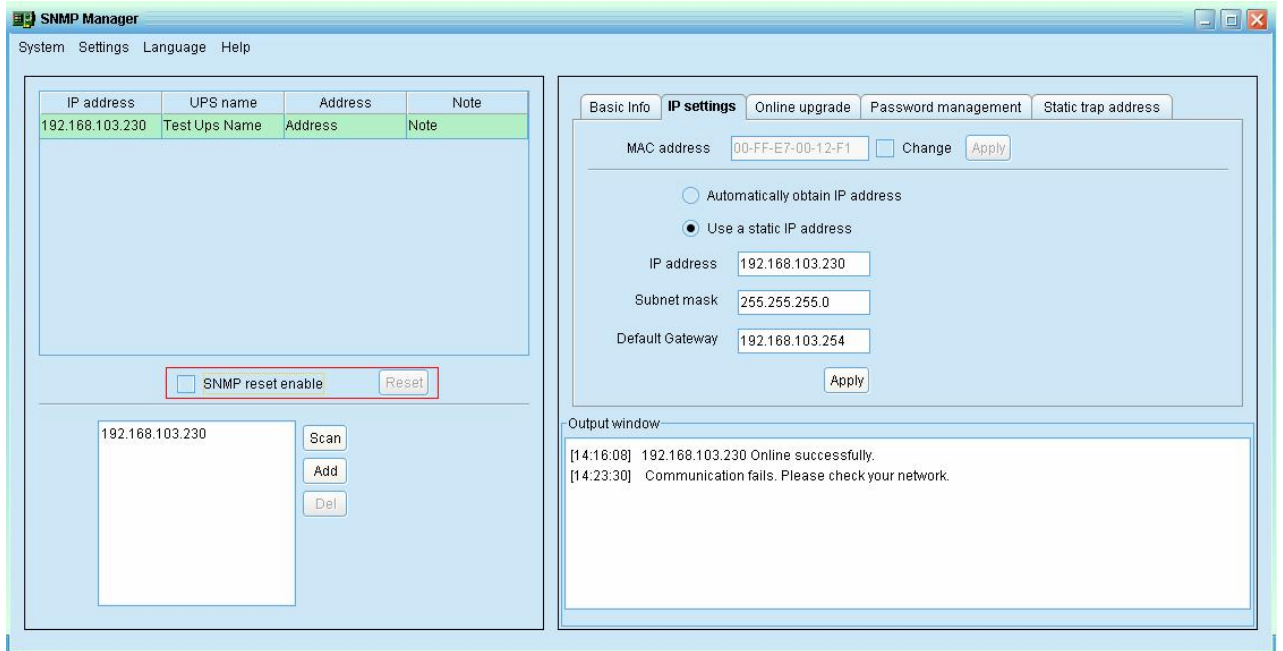
### 3.1.3. Delete IP Address

Select unnecessary IP address from list and click "Del" button to delete from list.

### 3.1.4. Reset

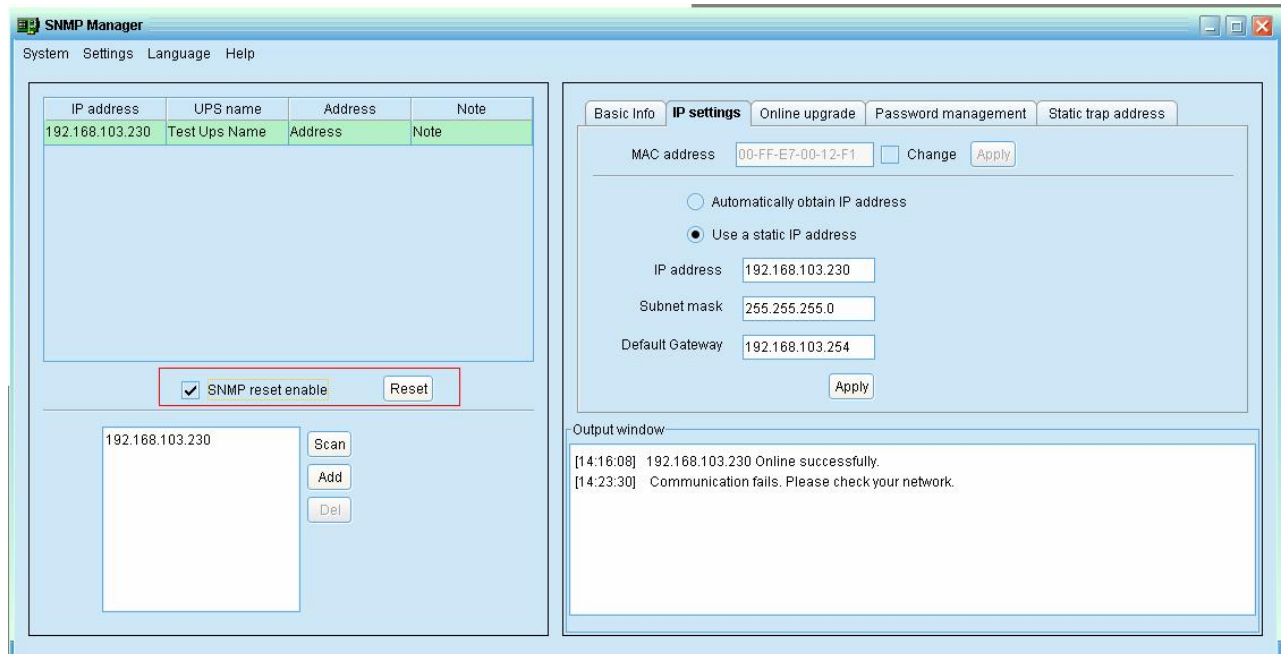
If it requires restarting the device IP addresses, please select the "SNMP reset enable" and click on the "Reset" button, then confirm the login, you can restart the device. Steps are as follows:

**Step1:** Selected from the IP list of equipment needed to restart IP. At this point, "SNMP reset enable" will be checked into. Refer to Diagram 3-3.



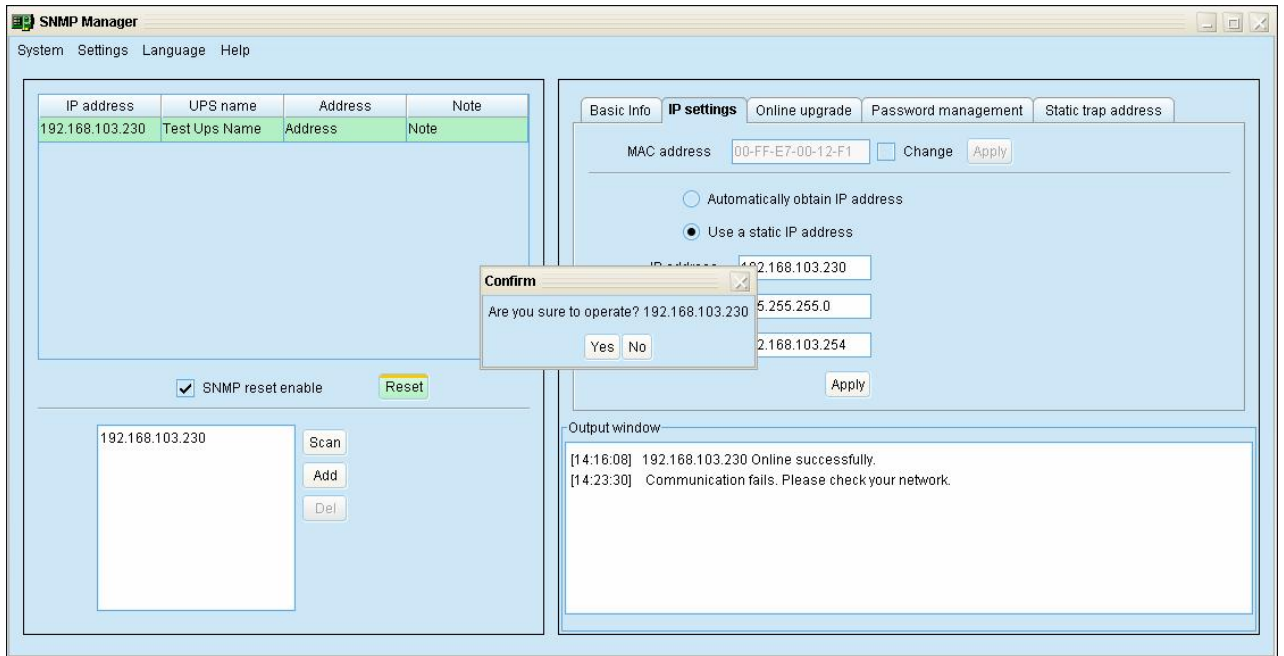
**Diagram 3-3**

**Step2:** Check the " SNMP reset enable ". Then "Reset" button will become available Click.  
Refer to Diagram 3-4.



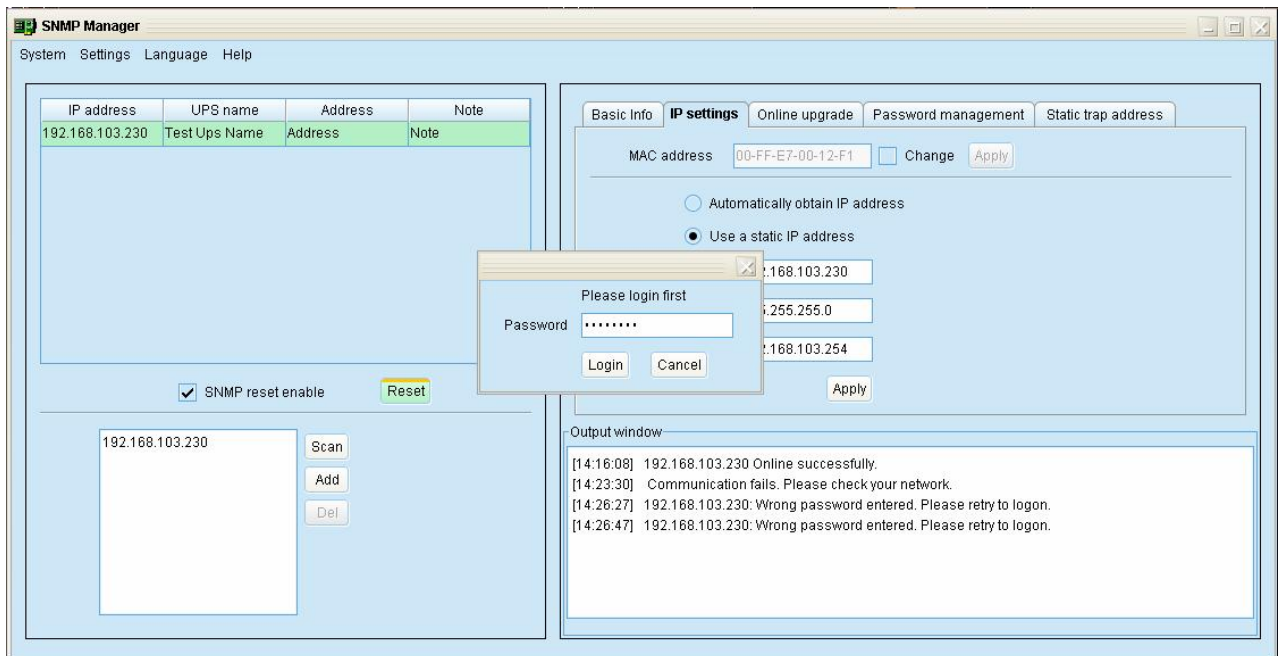
**Diagram 3-4**

**Step3:** Click the "Reset" button, and then prompts the user to confirm the operation.  
Refer to Diagram 3-5.



**Diagram 3-5**

**Step4:** Select "Yes", you will be prompted to log in, select "No", the suspension of operation. Refer to Diagram 3-6.



**Diagram 3-6**

**Step5:** Enter the correct password, and then click "Login" button, the target device will be restarted.

**NOTE:** If before you reboot, change the current device MAC address, and the current device is the use of DHCP (Automatically obtain IP address), then reboot, you need to manually click on "Scan" button to scan.

## 4. SNMP Manager Function Menu

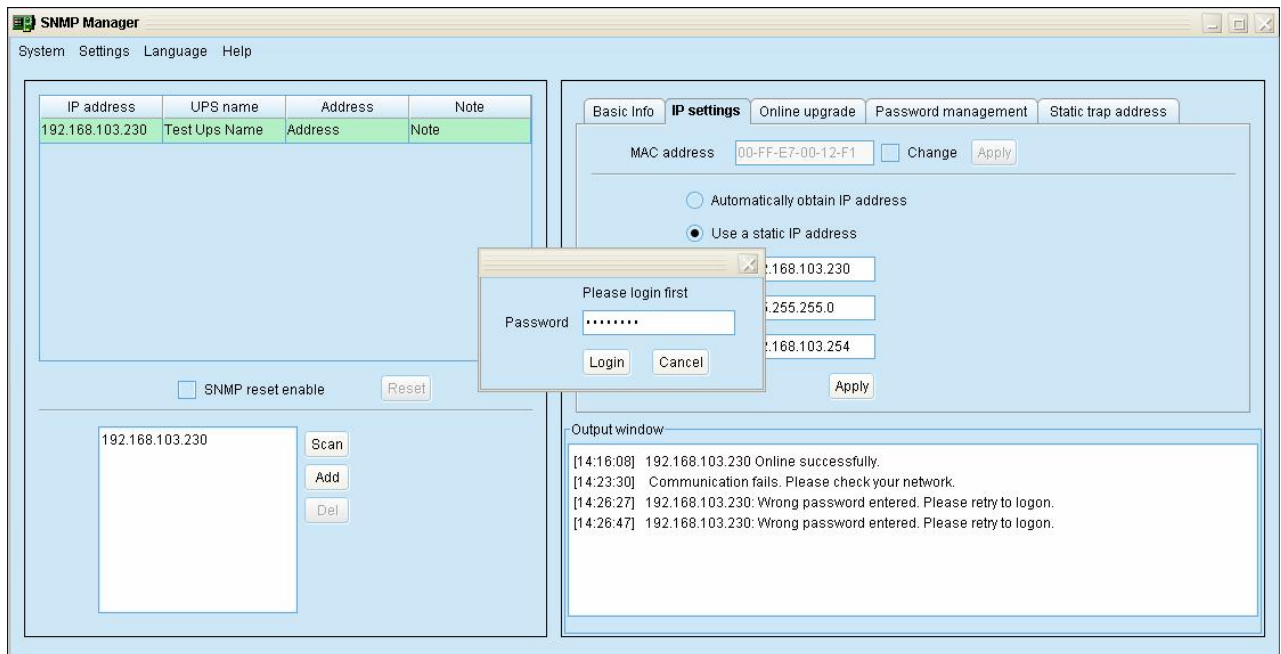
### 4.1. System

#### 4.1.1. Login

When remote login to access SNMP devices, it's necessary to verify ID. The default password is "12345678".

**Step1:** Select System >> Login

**Step2:** Enter default password and then click "Login" button. Or click "Cancel" to cancel login. Refer to Diagram 4-1.



**Diagram 4-1**

#### 4.1.2. Logout

Clear all currently saved passwords.

#### 4.1.3. Quit

Select "Quick" to exit SNMP Manager.



## 4.2. Settings

### 4.2.1. Basic Info

User can enter basic information such as UPS name, Address, Note and so on for SNMP card manually in order to easily distinguish the SNMP cards. Refer to Diagram 4-2.

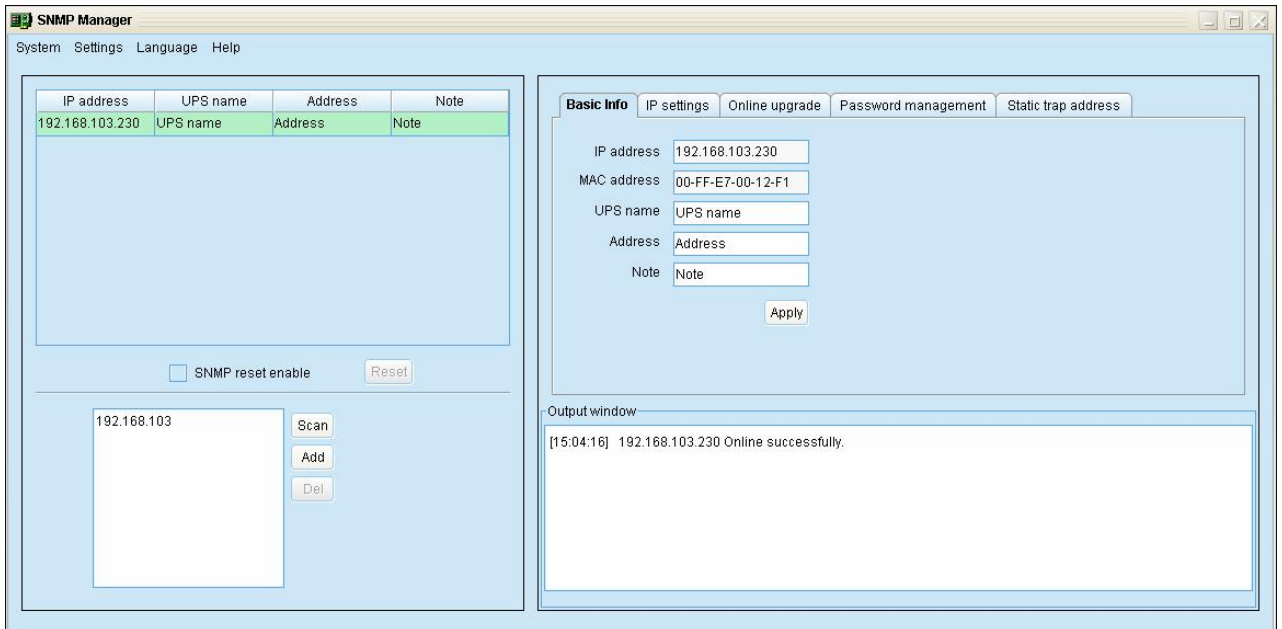
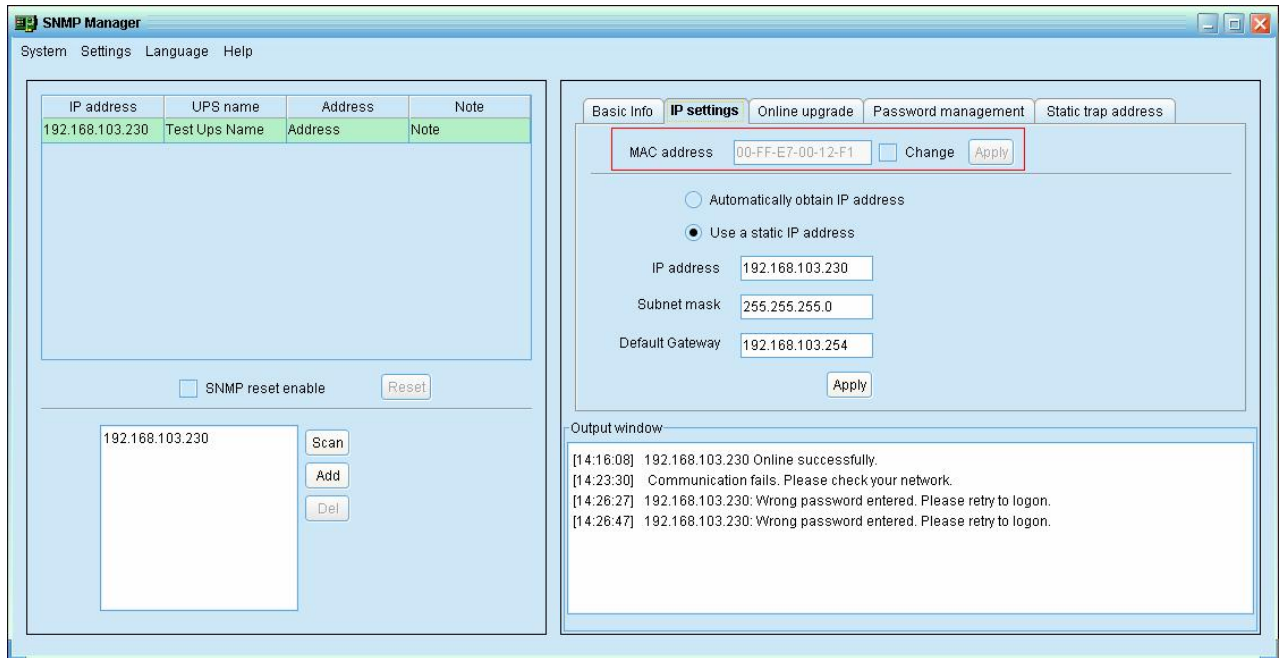


Diagram 4-2

### 4.2.2. IP Setting

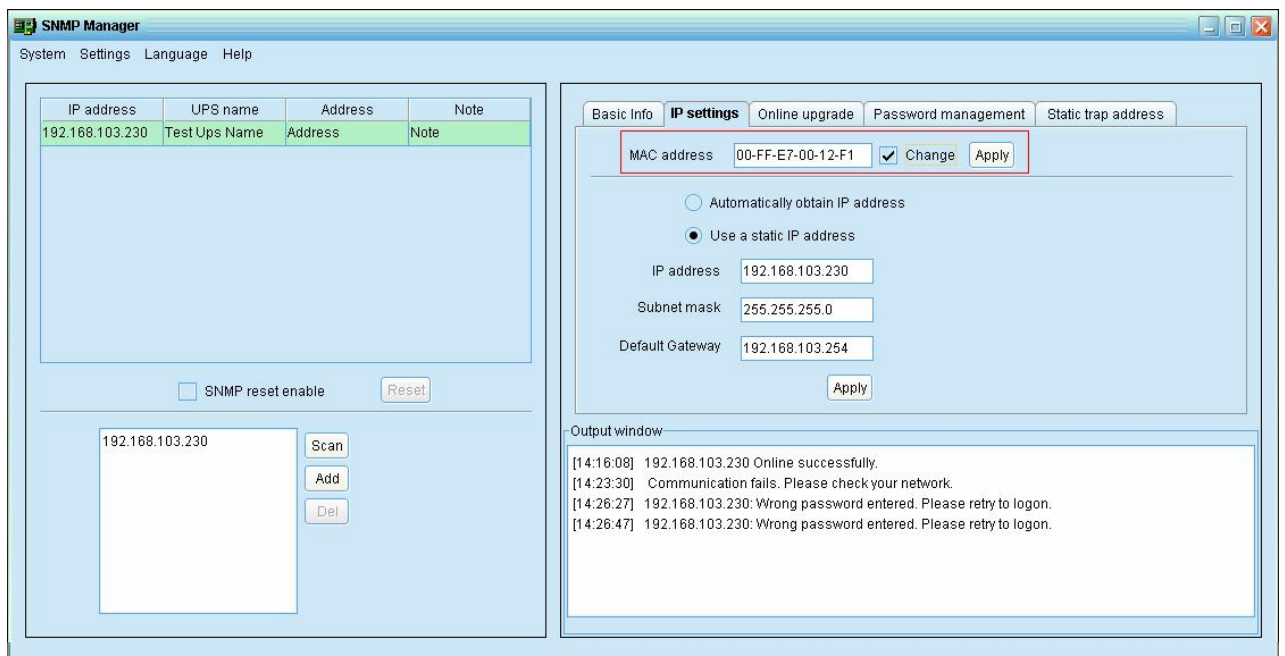
**Part 1:** Change MAC address

**Step 1:** IP list, select from the need to modify the MAC address of the device, then "Change" will be checked into, Refer to Diagram 4-3.



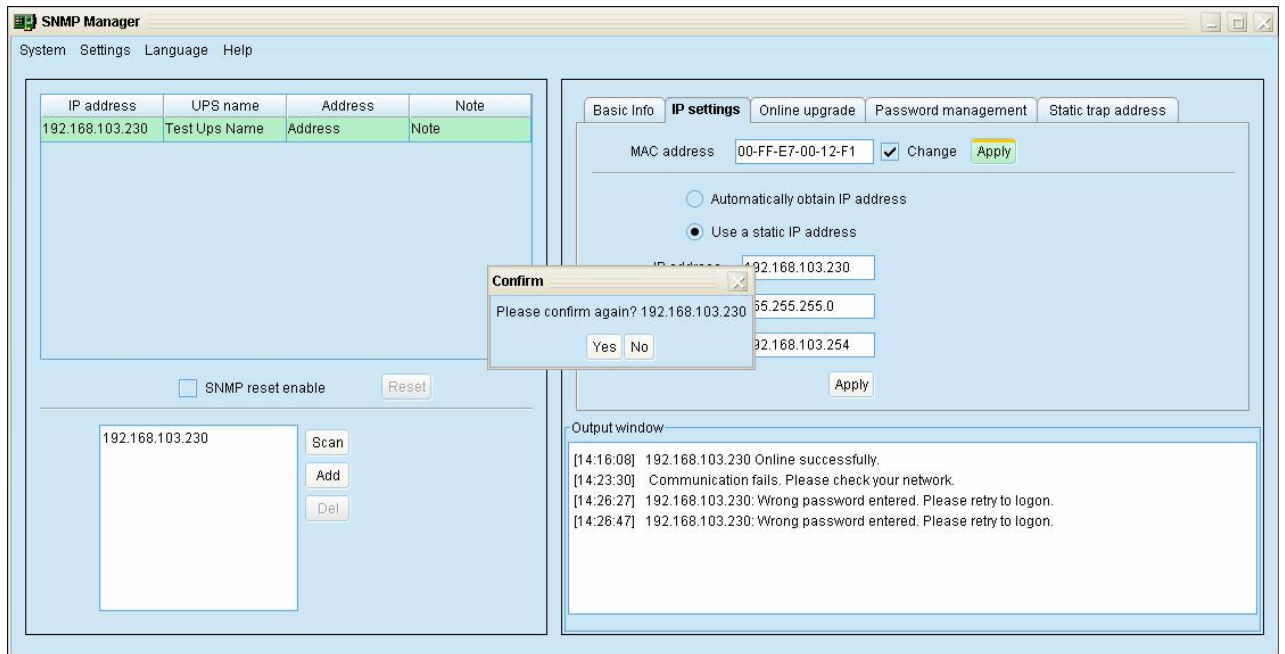
**Diagram 4-3**

**Step 2:** Check the "Change", then enter the MAC address can be entered into a box, "Apply" button will become clickable, Refer to Diagram 4-4.



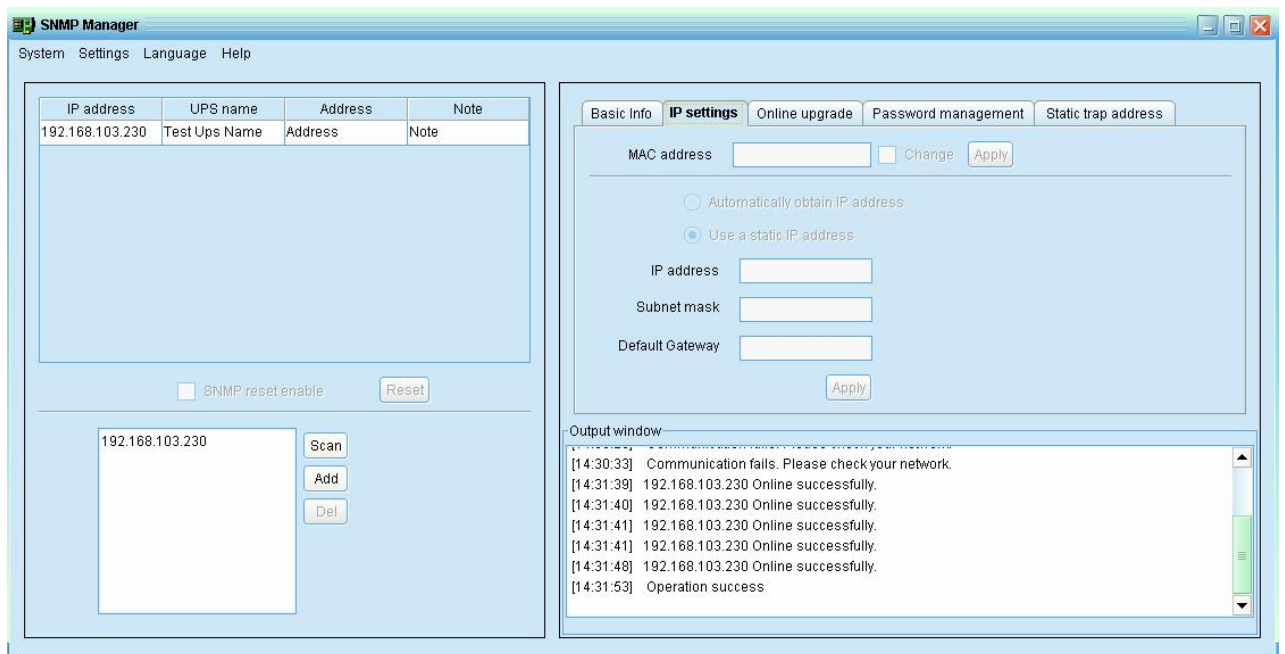
**Diagram 4-4**

**Step 3:** After modifying MAC address, click "Apply" button, then the user is prompted to confirm the operation, Refer to Diagram 4-5.



**Diagram 4-5**

**Step 4:** Confirm the operation; it will prompt "Operation success". Refer to Diagram 4-6.

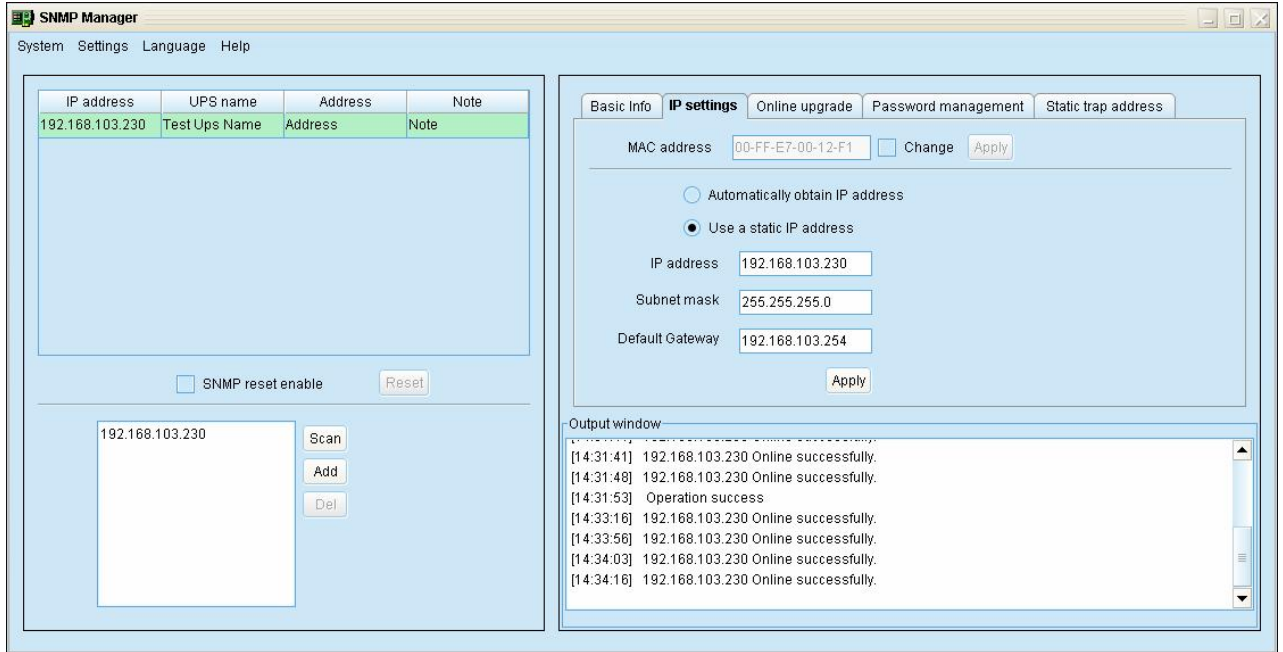


**Diagram 4-6**

**Part 2:** There are two methods to obtain IP address:

- Automatically obtain IP address (DHCP)
- Manually configure IP address

The system will default automatically obtain IP addresses. If there is no this kind of service provided in LAN, the default IP will display as "192.168.102.230", Net mask as "255.255.255.0" and default gateway as "0.0.0.0". Refer to Diagram 4-7.

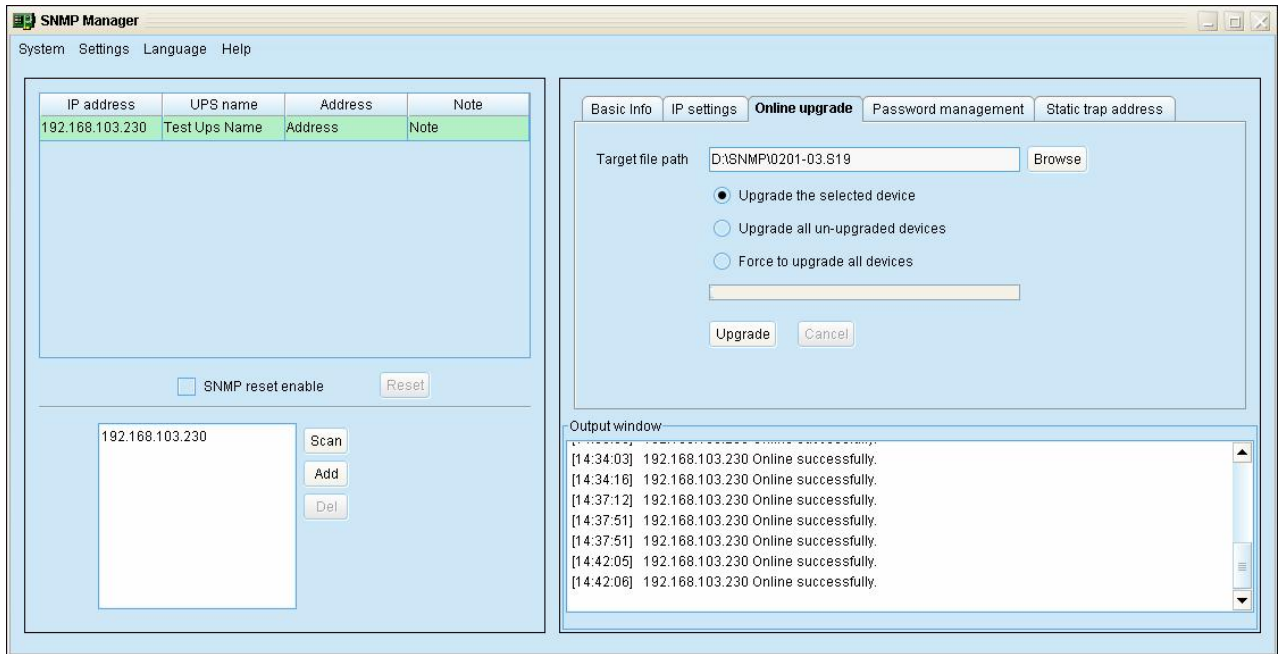


**Diagram 4-7**

### 4.2.3. Online upgrade

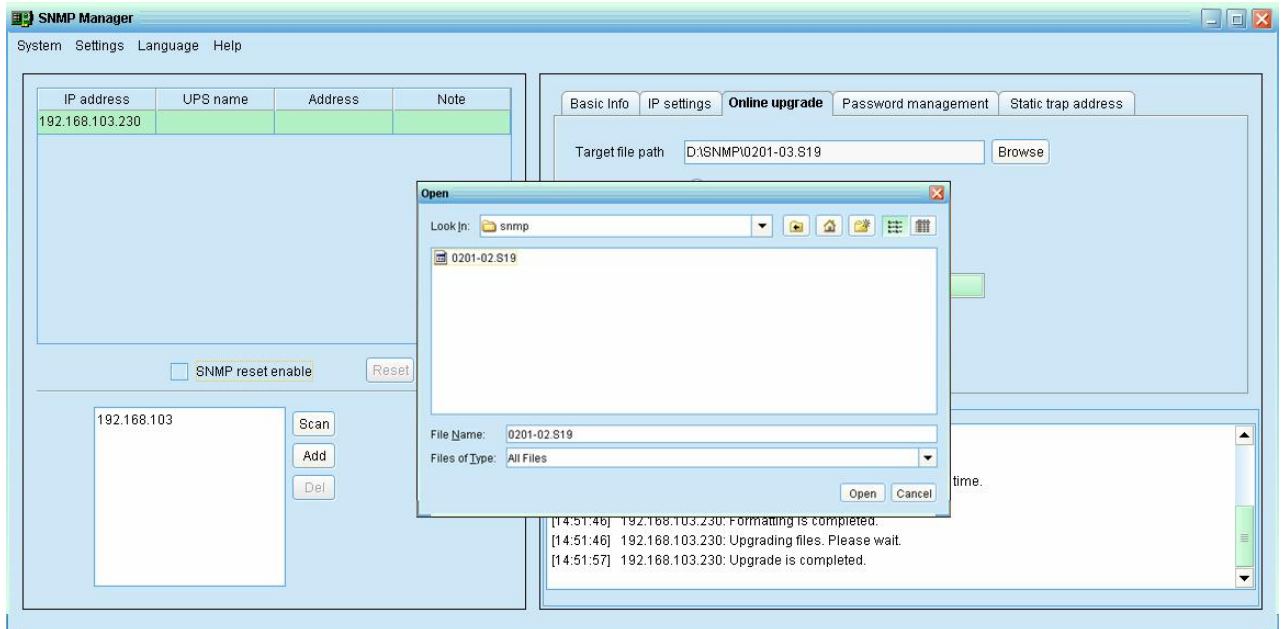
There are three methods for online upgrade:

- Upgrade the selected devices: It will upgrade all SNMP devices listed on the window.
- Upgrade all un-upgraded devices: It will only upgrade SNMP devices which are not using the same version as current SNMP device is.
- Force to upgrade all devices: No matter what kinds of version are used for SNMP devices listed in the window list, it will upgrade to the version used for current SNMP device. Refer to Diagram 4-8.



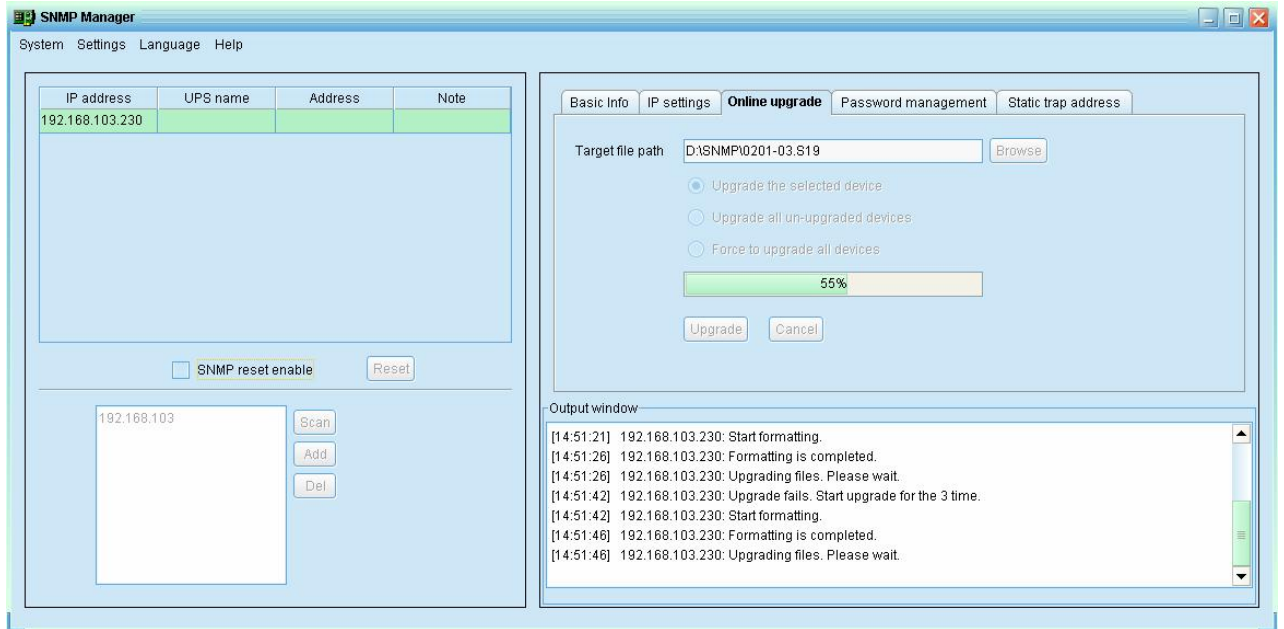
**Diagram 4-8**

**Step1:** Click "Browse" button to choose program file. Refer to Diagram 4-9.



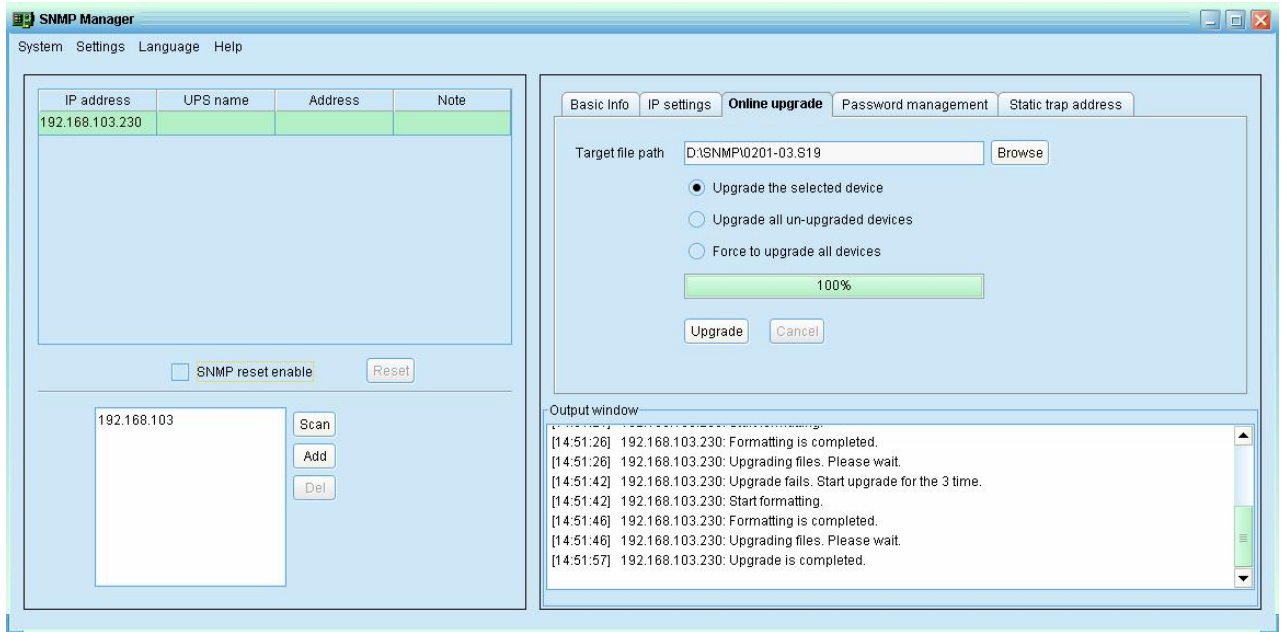
**Diagram 4-9**

**Step2:** Click "Upgrade" button to execute upgrade action. Refer to Diagram 4-10.



**Diagram 4-10**

**Step3:** When upgrade is complete, you may check the message in output window. Refer to Diagram 4-11.

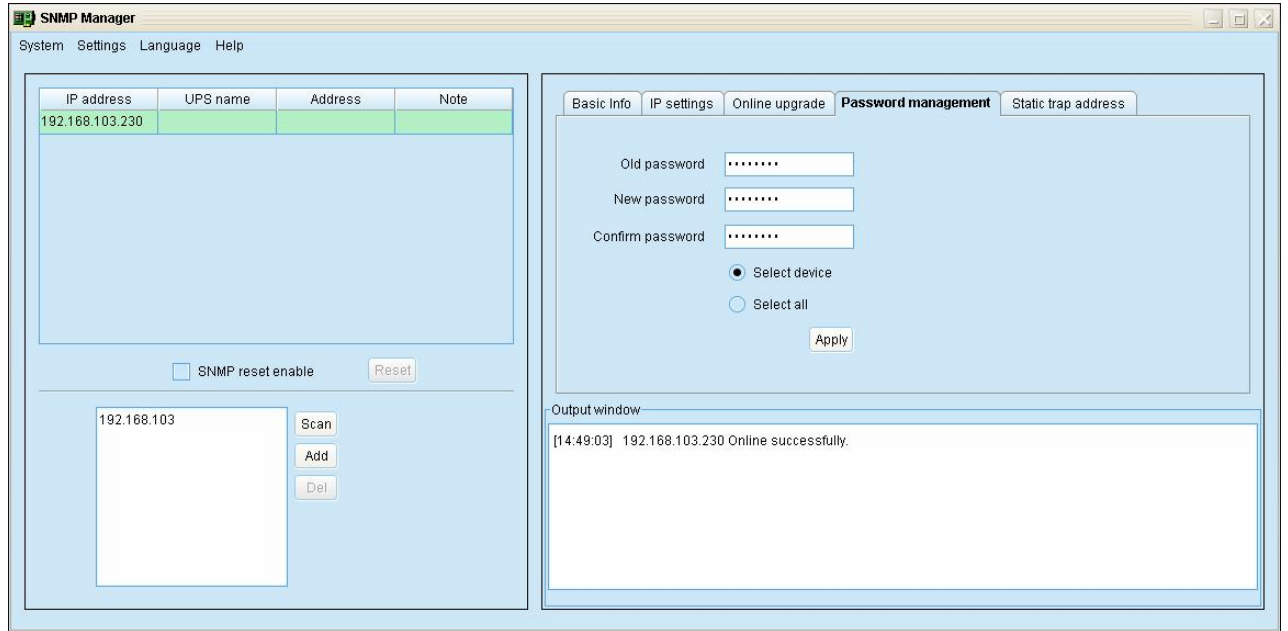


**Diagram 4-11**

**NOTE:** If abnormal situation occurs during upgrade process, the system will automatically re-start the upgrade operation. If this interruption occurs five times, then system will automatically stop this operation. At this time, please check if LAN is working fine or not.

#### **4.2.4. Password management**

You may modify single password for one SNMP device or all passwords for all SNMP devices. Refer to Diagram 4-12



**Diagram 4-12**

Select Device: Choose to change password for selected SNMP device on the window list

Select all: Choose to change passwords for all SNMP devices on the window list

Operation step: Enter original password, new password, and re-enter new password to confirm. Then click "Apply" button to complete password change.

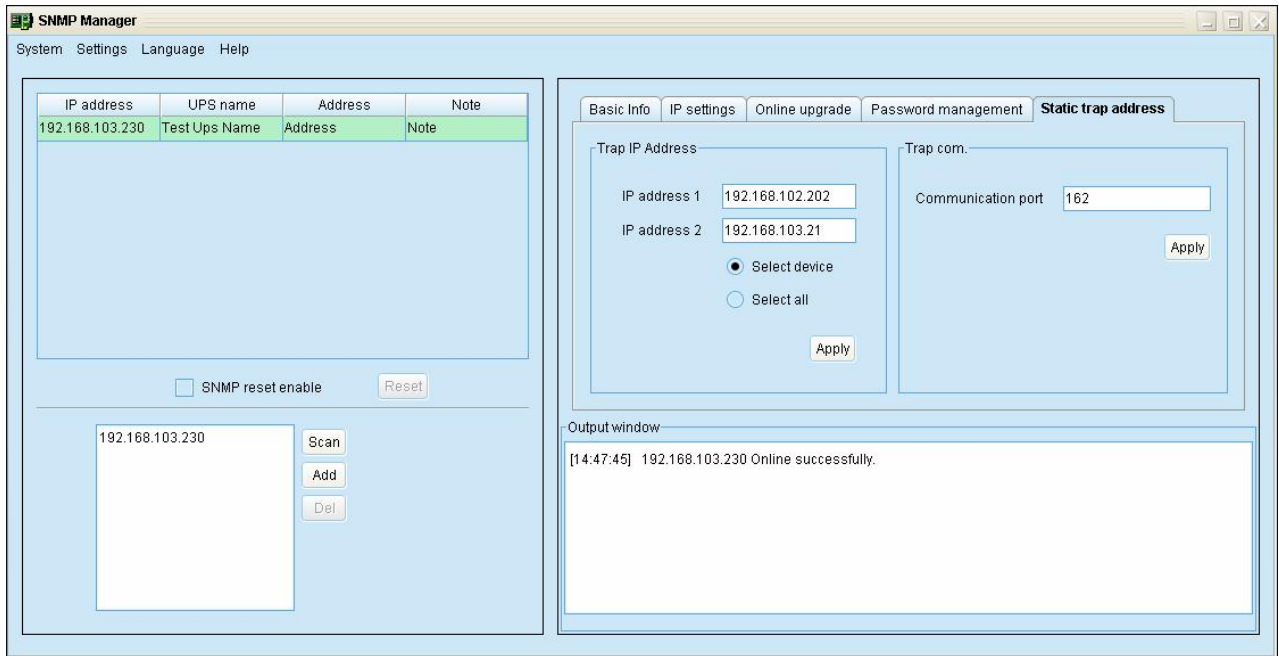
**NOTE:** The length of password is 8~15 digits, if the password modifies operation for all SNMP devices, all SNMP devices password must be consistent.

#### **4.2.5. Static trap address**

You may configure two static trap addresses and change trap port in SNMP Manager.

The default trap port is 162. Refer to Diagram 4-13.





**Diagram 4-13**

**NOTE:** The SNMP device could provide 2 static trap addresses and 8 dynamic trap addresses. The SNMP device will automatically load the IP address of host machine which installed monitoring software as dynamic trap address. If there are over 10 minutes inactive for the dynamic trap address, then the SNMP device will automatically release it for to load new dynamic trap.

### 4.3. Language

SNMP Manager offers 12 languages:

- ✓ Chinese(Simplified)
- ✓ Chinese(Traditional)
- ✓ English
- ✓ German
- ✓ Italian
- ✓ Polish
- ✓ Portuguese
- ✓ Russian
- ✓ Spanish
- ✓ Turkish

✓ Ukrainian

✓ French

The default language setting would be English.

#### **4.4. Help**

- **About:** Click "Help" menu and select "About" item. It represents the copyright information about software
- **Help:** Click "Help" menu and select "System help" item. It will open the help manual. Before operating software, please read manual carefully.