

Matrox Mojito 4K

Installation and User Guide

January 24, 2014

matrox[®]
Digital Video Solutions

Y11275-201-0110

Trademarks

Matrox Electronic Systems Ltd.	Matrox [®] , Matrox Mojito [™] , Mtx.utils [™]
Adobe Systems Inc.	Adobe [®] , After Effects [®] , Encore [®] , Photoshop [®] , Prelude [®] , Premiere [®] , SpeedGrade [®]
Intel Corporation	Intel [®] , Xeon [®]
Microsoft Corporation	Microsoft [®] , Windows [®]
NVIDIA Corporation	NVIDIA [®] , GeForce [®]
PCI-SIG	PCI-SIG [®] , PCIe [®]

All other nationally and internationally recognized trademarks and tradenames are hereby acknowledged.

Copyright © 2014 Matrox Electronic Systems Ltd. All rights reserved.

Disclaimer Matrox Electronic Systems Ltd. reserves the right to make changes in specifications at any time and without notice. The information provided by this document is believed to be accurate and reliable. However, no responsibility is assumed by Matrox Electronic Systems Ltd. for its use; nor for any infringements of patents or other rights of third parties resulting from its use. No license is granted under any patents or patent rights of Matrox Electronic Systems Ltd.

Unauthorized recording or use of broadcast television programming, video tape, or other copyrighted material may violate copyright laws. Matrox Electronic Systems Ltd. assumes no responsibility for the illegal duplication, use, or other acts that infringe on the rights of copyright owners.

Matrox Electronic Systems Ltd.
1055 St. Regis Blvd., Dorval, Quebec, Canada H9P 2T4
Tel: (514) 685-2630 Fax: (514) 685-2853 World Wide Web: www.matrox.com

Matrox Limited Warranty

Limited Warranty Statement

- 1 Matrox* ("Matrox") having its head office at 1055 St-Regis Blvd., Dorval, Quebec Canada tel: (514) 822-6000 warrants that the Matrox hardware products (the "Matrox Product") will be free from defects in materials and workmanship under normal use for a period of three (3) years from the date of purchase by the original customer ("Customer" or "You") who provides adequate proof of purchase and payment (for example, a copy of your sales receipt or purchase invoice). The warranties provided by Matrox in this Matrox limited warranty statement apply only to Matrox Products that the Customer purchases for use, and not for resale. This warranty applies only to the original Customer and is non-transferable. MATROX DOES NOT WARRANT THAT THE OPERATION OF THE MATROX PRODUCT WILL BE UNINTERRUPTED OR ERROR-FREE, THAT DEFECTS IN THE MATROX PRODUCT WILL BE CORRECTED, OR THAT THE MATROX PRODUCT WILL MEET THE CUSTOMER'S REQUIREMENTS OR PERFORM WITH ANY HARDWARE OR SOFTWARE PROVIDED BY THIRD PARTIES. Conditions and limitations of Matrox's warranty are stated below.
- 2 Matrox's limited warranty applies only to the Matrox Product entirely manufactured by or for Matrox. The limited warranty does not apply to any non-Matrox hardware products or any software, even if packaged or sold with the Matrox Product. Manufacturers, suppliers or publishers other than Matrox may provide their own warranties to the Customer, but Matrox, insofar as permitted by law, provides their products "as is." Software provided by Matrox is not covered under this limited warranty (please refer to the licensing agreement accompanying the software for details of the terms applicable to such).
- 3 Matrox's limited warranty covers only those defects which arise as a result of normal use of the Matrox Product and does not apply to any damage which arises from:
 - a improper or inadequate maintenance;
 - b incompatibilities due to the Customer's hardware or software applications, including non-Matrox products, with or in which the Matrox Product interfaces;
 - c Matrox Product of a special or custom-made nature;
 - d unauthorized modification or misuse, including physical damage to the Matrox Product caused by the Customer or due to transportation of the product;
 - e improper installation, abuse, misapplication or negligence;
 - f failure to follow instructions relating to Matrox Product's use;
 - g operation outside the Matrox Product's environmental specifications;
 - h improper site preparation or maintenance;
 - i software;
 - j service performed by anyone who is not a representative of Matrox;
 - k other causes that do not relate to a Matrox Product defect;
 - l defects or damage suffered as a result of force majeure (including theft);
 - m defects or damage suffered as a result of normal wear and tear or otherwise due to the normal aging of the Matrox Product, and/or
 - n stolen goods.

The warranty is voided by removal or alteration of identification labels on the Matrox Product or its parts.

- 4 In the event of a defect in a Matrox Product during the applicable warranty period, Matrox shall at its sole option, either i) repair the defect using new or refurbished parts and return the repaired Matrox Product within a reasonable delay; or ii) replace the Matrox Product with a Matrox Product that is new or which has been manufactured from new or serviceable used parts and is at least functionally equivalent to the original Matrox Product and send such replacement Matrox Product within a reasonable delay.

* Matrox is Matrox Electronic Systems Ltd, Matrox Graphics Inc. or Matrox Europe Limited. Head office at 1055 St-Regis Blvd. Dorval, Quebec, Canada H9P 2T4 Telephone (514) 822-6000.

- 5 A replacement Matrox Product or part assumes the remaining warranty of the original Matrox Product. When a Matrox Product or part is replaced, any replacement item becomes the Customer's property and the replaced item becomes Matrox's property.
- 6 This warranty is valid in any country where Matrox Products are distributed by Matrox and/or its authorized resellers, dealers or distributors.
- 7 **This limited warranty gives the Customer specific legal rights. The Customer may also have other rights which vary from state to state in the United States, from province to province in Canada, and from country to country elsewhere in the world.**
- 8 For Australian Consumers: The rights described in this warranty are in addition to the statutory rights to which You may be entitled under the Competition and Consumer Act 2010 and other applicable Australian consumer protection laws and regulations. Our Matrox Products come with guarantees that cannot be excluded under the Australian Consumer Law. You are entitled to a replacement or refund for a major failure and compensation for any other reasonably foreseeable loss or damage. You are entitled to have the goods repaired or replaced if the goods fail to be of acceptable quality and the failure does not amount to a major failure. Goods presented for repair may be replaced by refurbished goods of the same type rather than being repaired. Refurbished parts may be used to repair the goods.

Limitations of Warranty

- 1 TO THE EXTENT PERMITTED BY LAW, THIS WARRANTY AND THE REMEDIES SET FORTH ABOVE ARE EXCLUSIVE AND IN LIEU OF ALL OTHER WARRANTIES, REMEDIES AND CONDITIONS. NEITHER MATROX NOR ANY OF ITS THIRD PARTY SUPPLIERS MAKES ANY OTHER WARRANTY OF ANY KIND, WHETHER EXPRESSED OR IMPLIED, WITH RESPECT TO MATROX PRODUCTS. MATROX SPECIFICALLY DISCLAIMS (AND THE CUSTOMER, BY ACCEPTING THE MATROX PRODUCT, SPECIFICALLY ACCEPTS SUCH DISCLAIMER AND WAIVES) ALL OTHER WARRANTIES, EITHER EXPRESSED OR IMPLIED, ORAL OR WRITTEN, INCLUDING BUT NOT LIMITED TO THE IMPLIED WARRANTIES OF MERCHANTABILITY AND FITNESS FOR A PARTICULAR OR INTENDED PURPOSE OR USE AND THE WARRANTY AGAINST LATENT DEFECTS, WITH RESPECT TO THE HARDWARE AND/OR SOFTWARE. MATROX FURTHER DISCLAIMS ANY WARRANTY THAT MATROX PRODUCTS, IN WHOLE OR IN PART, WILL BE FREE FROM INFRINGEMENT OF ANY THIRD PARTY INTELLECTUAL PROPERTY, INCLUDING, WITHOUT LIMITATION, ANY PATENTS, OR PROPRIETARY RIGHTS.
- 2 To the extent that this limited warranty is inconsistent with the law of the locality where the Customer purchases the Matrox Product, this limited warranty shall be deemed modified to be consistent with such local law. Under such local law, certain limitations of this limited warranty may not apply to the consumer. If Matrox cannot lawfully disclaim statutory or implied warranties, then to the extent permitted by law, all such warranties shall be limited in duration to the duration of this express warranty and to repair or replacement service as determined by Matrox at its sole discretion.
- 3 Matrox disclaims any representation that it will be able to repair any Matrox Product under this warranty or make a Matrox Product exchange without risk to or loss of the programs or data.
- 4 To the extent allowed by local law, the remedies provided in this limited warranty are the Customer's sole and exclusive remedies.

Limitations of Liability

- 1 EXCEPT FOR THE OBLIGATIONS SPECIFICALLY SET FORTH IN THE LIMITED WARRANTY, IN NO EVENT SHALL MATROX BE LIABLE FOR:
 - a any direct, indirect, special, incidental, consequential, foreseeable or unforeseeable, or punitive damages, whether based on contract, tort, delict or any other legal theory and whether advised of the possibility of such damages; and/or

- b damages arising from the loss of use, data, Matrox Production revenue, use of money, anticipated savings, procurement of substitute goods, business, opportunity, goodwill, reputation and/or profit in connection with the Matrox Product or any business interruption.
 - c Matrox disclaims and shall have no obligation to indemnify or defend You or any third party in respect of any actual or alleged infringement of any actual or pending patents, copyright or other intellectual property rights. Matrox shall have no liability arising out of any such actual or alleged intellectual property infringement.
- 2 Without prejudice to the foregoing, any liability of Matrox for any breach of warranty shall be limited to the actual amount paid by the Customer for the defective hardware in question.
 - 3 To the extent allowed by local law, Matrox's entire liability and the Customer's exclusive remedy shall be the repair or replacement of any defective Matrox Product during the warranty period. Matrox does not offer any other warranty with respect to Matrox hardware or software or any other hardware or software.
 - 4 Customer shall be responsible for all applicable taxes, duties and customs fees on any replacement unit, as well as all transport, insurance, storage and other charges incurred on all returned Matrox Products.
 - 5 Matrox reserves the right to change its warranties at any time and without notice, at its sole discretion, with respect to future sales and deliveries.
 - 6 **UNAUTHORIZED USE. THE MATROX PRODUCT AND ANY DOCUMENTATION RELATED THERETO ARE NOT DESIGNED, INTENDED, AUTHORIZED OR WARRANTED TO BE SUITABLE FOR USE OR RESALE IN ANY TYPE OF SYSTEM OR OTHER APPLICATIONS RELATED TO, HAZARDOUS OR POTENTIALLY HAZARDOUS ENVIRONMENTS OR APPLICATIONS REQUIRING HIGH-AVAILABILITY OR FAIL-SAFE PERFORMANCE, WHERE PERSONAL INJURY OR DEATH MAY OCCUR, SUCH AS MEDICAL SYSTEMS, LIFE SUSTAINING, LIFE SAVING SYSTEMS, OPERATION OF NUCLEAR FACILITIES, AIRCRAFT NAVIGATION OR COMMUNICATION SYSTEMS, AIR TRAFFIC CONTROL, PUBLIC WORKS, WEAPONS SYSTEMS, OR ANY OTHER APPLICATION IN WHICH THE FAILURE OF A MATROX PRODUCT COULD LEAD TO PROPERTY DAMAGE, ENVIRONMENTAL DAMAGE, OR PERSONAL INJURY. CUSTOMER WILL NOT USE, OR PERMIT TO BE USED, THE MATROX PRODUCTS FOR SUCH HIGH-AVAILABILITY, FAIL-SAFE OR CRITICAL APPLICATIONS AND FURTHER AGREES TO INDEMNIFY, DEFEND AND HOLD HARMLESS MATROX AND ITS MANAGERS, DIRECTORS, OFFICERS, EMPLOYEES, AGENTS, AFFILIATES, SUCCESSORS, AND ASSIGNS FROM AND AGAINST ANY ACTION, SUIT, PROCEEDING, COST, EXPENSE, DAMAGES, AND LIABILITY (INCLUDING, BUT NOT LIMITED TO, REASONABLE ATTORNEYS' FEES) ARISING OUT OF, OR RELATED TO, THE BREACH OF CUSTOMER'S OBLIGATIONS RELATED HERETO, EVEN IF SUCH CLAIM ALLEGES THAT MATROX WAS NEGLIGENT REGARDING THE DESIGN OR MANUFACTURE OF THE MATROX PRODUCT.**

Obtaining Service (whether in or out of warranty)

- 1 Verify that your Matrox Product was installed and configured according to the information in its accompanying documentation or at the web site referenced therein.
- 2 Read the "Troubleshooting" information included with the Matrox Product or at the web site referenced therein, to verify if the problem can be easily solved.
- 3 If You are still experiencing difficulties, please contact your dealer or distributor where You purchased your Matrox Product. Please go to <http://www.matrox.com/hr/en/company/legal/en/warranty>, to find the list of Matrox authorized dealers and/or distributors in your area.
- 4 Alternatively, if this first option is unavailable to You and you are still experiencing problems or if you believe that your product is defective, please contact the Matrox Support team. We will help you troubleshoot your issue and process a replacement if it is found to be defective. Matrox support team can be reached at <http://www.matrox.com/hr/en/company/legal/en/warranty>.
- 5 Before returning the Matrox Product, please back up any and all information or data thereon, including, without limitation, confidential, proprietary, personal or other information. All data and information on the Matrox Product will be lost given that the persistent storage device(s) will be reformatted to factory default during testing;

and Matrox cannot, and does not, accept any responsibility for any information that may be lost, corrupted, damaged or otherwise rendered inaccessible.

- 6 When returning a Matrox Product, leave the configuration as it was when You were using it, and leave all identification stickers on the Matrox Product. Pack the Matrox Product in its original box and return it to your Matrox dealer or distributor where the Matrox Product was purchased, together with your proof of purchase. Your Matrox dealer or distributor will return the Matrox Product for You. Alternatively, You may proceed by returning your Matrox Product by following the guidelines referred to at the following address <http://www.matrox.com/hr/en/company/legal/en/warranty>, and follow the link to Customer Support, where a Return Merchandise Authorization (RMA) number will be issued, upon receipt of adequate proof of purchase, and shipping instructions will be given to you. Customer will be responsible in paying the freight to send the Matrox Product for service. Please ensure that the product is in Electrostatic discharge (ESD) packaging before shipping it back to Matrox or else the warranty shall be void.

DO NOT RETURN THE MATROX PRODUCT TO MATROX WITHOUT MATROX'S RMA NUMBER AND EXPRESS AUTHORIZATION.

Once an RMA number is issued, the Matrox Product must be returned to Matrox within thirty (30) days.

NON-WARRANTY product will be shipped back to You collect or on your courier account number, if one is provided.

General

- 1 This limited warranty shall be governed by the laws of the Province of Quebec, Canada and the federal laws of Canada applicable therein and the courts of the Province of Quebec shall have exclusive jurisdiction to hear and decide any dispute instituted by the Customer in connection with this limited warranty; the Customer waives, by accepting the Matrox Product, its rights to institute proceedings in connection with this warranty against Matrox in any jurisdiction other than Quebec. Customer hereby agrees to all terms of this warranty in the English language. The United Nations Convention on Contracts for the International Sale of Goods does not apply to this warranty and is strictly excluded.
- 2 Except as may be expressly agreed to the contrary in a signed written agreement between Customer and Matrox, i) any written or oral information or advice given by Matrox's distributors, agents or employees will in no way increase the scope of the limited warranty contained in this limited warranty; and ii) this limited warranty states the only warranty made to You by Matrox with respect to the units of Matrox Product that You have purchased, and the terms of this limited warranty shall override the terms of any purchase orders and any other terms and understandings You may seek to apply in respect thereof.
- 3 This limited warranty is personal to You and cannot be assigned or transferred without Matrox's prior written agreement.
- 4 The failure by Matrox to enforce any of the provisions of this limited warranty shall not constitute a waiver of Matrox's rights to enforce such provision or any other provision of this limited warranty in the future.
- 5 If any clause in this limited warranty is held by a court of law to be illegal or unenforceable the remaining provisions of this limited warranty shall not be affected thereby.

Matrox Software License Agreement

THIS IS A LEGAL AGREEMENT BETWEEN THE LICENSEE AND MATROX ELECTRONIC SYSTEMS LTD. ("MATROX") CONCERNING THE USAGE OF THE MATROX SOFTWARE. BY DOWNLOADING, INSTALLING, COPYING, ACCESSING, CLICKING ON AN "ACCEPT" BUTTON, OR OTHERWISE USING THE SOFTWARE, THE LICENSEE AGREES TO THE TERMS OF THIS AGREEMENT. IF YOU ARE ACCEPTING THESE TERMS ON BEHALF OF YOUR COMPANY, ORGANIZATION, EDUCATIONAL INSTITUTION, OR AGENCY, INSTRUMENTALITY, OR DEPARTMENT OF THE FEDERAL GOVERNMENT AS ITS AUTHORIZED LEGAL REPRESENTATIVE, YOU REPRESENT AND WARRANT THAT YOU HAVE FULL AUTHORITY TO BIND LICENSEE TO THESE TERMS. IF YOU DO NOT AGREE TO THE TERMS OF THIS AGREEMENT, PLEASE RETURN YOUR MATROX PRODUCT. IF THE SOFTWARE WAS DOWNLOADED, DESTROY ALL COPIES OF THE SOFTWARE.

In this agreement "Software" refers to: any firmware, software, associated software components, media, printed materials, and "online" or electronic documentation related to Matrox products.

The Software is not sold, and instead is only licensed for use, strictly in accordance with this document. This license does not cover the sale of hardware, since it may not necessarily be sold as a package with the Software. This license sets forth the terms and conditions of the Software license only.

Any Software provided to Licensee is the copyrighted work of Matrox and/or its suppliers. The present License does not give Licensee any intellectual property rights to the Software or its derivatives. The downloading and/or the use of any Software are subject to the following restrictions and limitations:

LICENSES:

If you are an end user, the "End User License" shall apply to you.

If you are an original equipment manufacturer (OEM), the "OEM License" shall apply to you.

END USER LICENSE

- 1 Licensee may install the Software on an unlimited number of computers owned or leased by Licensee in any location. However, Licensee must use the Software on a single computer owned or leased by Licensee at a time, in conjunction with and for the purpose of, operating the Matrox hardware. Licensee shall also have the right to make one copy of the Software in any computer-readable or printed form for back-up or archival purposes;
- 2 No right to recopy, sell, distribute, license, sub-license, alter, modify, disassemble, de-compile or reverse engineer any Software in any manner whatsoever is hereby given, except as provided in this Agreement. Violation may result in severe civil and/or criminal penalties, as violators will be prosecuted to the maximum extent possible;
- 3 Licensee agrees to treat the Software as confidential information, and shall protect said information by using the same degree of care Licensee uses to protect Licensee's own confidential information, but no less than a reasonable degree of care, to prevent the unauthorized use, dissemination, disclosure or publication of such;
- 4 Licensee may only provide and disclose parts of the Software to third parties who have a need-to-know for the purpose of installation, service integration and/or support of said Software within Licensee's product. In such event, Licensee may only disclose the relevant and necessary parts of the Software to permit the third party to accomplish his work provided that all such disclosures shall be subject to the terms and conditions of this Agreement;
- 5 Licensee may not grant any sublicense, lease or other right in the Software to others;
- 6 Notwithstanding any other provision in this License, if Licensee provides any ideas, suggestions or recommendations to Matrox regarding the Licensed Software and/or Licensee's product ("Feedback"), Matrox is free to use and incorporate such Feedback in Matrox's products, without payment of royalties or other consideration to Licensee.

OEM LICENSE

Licensee may reproduce and distribute the Software only as an integral part of or incorporated in Licensee's product or as a standalone Software maintenance update for existing end users of Licensee's products, excluding any other standalone products, subject to these conditions:

- 1 This Software is licensed for use only in conjunction with Matrox products. Use of the Software in conjunction with non-Matrox products is not licensed hereunder;
- 2 No right to recopy, sell, distribute, license, sub-license, alter, modify, disassemble, de-compile or reverse engineer any Software in any manner whatsoever is hereby given, except as provided in this Agreement. Violation may result in severe civil and/or criminal penalties, as violators will be prosecuted to the maximum extent possible;
- 3 Licensee agrees to treat the Software as confidential information, and shall protect said information by using the same degree of care Licensee uses to protect Licensee's own confidential information, but no less than a reasonable degree of care, to prevent the unauthorized use, dissemination, disclosure or publication of such;
- 4 You may only distribute the Software to your customers pursuant to a written license agreement. At a minimum such license shall safeguard Matrox's ownership rights to the Software;
- 5 Licensee may only provide and disclose parts of the Software to third parties who have a need-to-know for the purpose of installation, service integration and/or support of said Software within Licensee's product. In such event, Licensee may only disclose the relevant and necessary parts of the Software to permit the third party to accomplish his work provided that all such disclosures shall be subject to the terms and conditions of this Agreement;
- 6 Notwithstanding any other provision in this License, if Licensee provides any ideas, suggestions or recommendations to Matrox regarding the Licensed Software and/or Licensee's product ("Feedback"), Matrox is free to use and incorporate such Feedback in Matrox's products, without payment of royalties or other consideration to Licensee.

GENERAL LICENSE TERMS: (APPLICABLE TO BOTH END-USERS & OEM'S)

There are inherent dangers in the use of any software available for downloading on the Internet and Matrox cautions Licensee to ensure that Licensee completely understands the potential risks before downloading any of the Software. Licensee is solely responsible for adequate protection and backup of the data and equipment used in connection with any of the Software, and Matrox will not be liable for any damages that may be suffered in connection with use of the Software.

Licensee hereby acknowledges and agrees that this License, and all its terms and conditions, automatically applies, without other notice, to future updates of the Software, firmware, BIOS, drivers and associated utilities.

COPYRIGHT

All title, including but not limited to copyrights, in and to the Software and any copies thereof are owned by Matrox or its suppliers. All title and intellectual property rights in and to the content which may be accessed through use of the Software is the property of the respective content owner and may be protected by applicable copyright or other intellectual property laws and treaties. This Software License Agreement grants you no rights to use such content. All rights not expressly granted are reserved by Matrox

DISCLAIMER OF WARRANTIES

Licensee expressly acknowledges and agrees that use of the Software is at Licensee's sole risk. The Software and Documentation is provided "AS IS" AND WITHOUT WARRANTY OF ANY KIND AND MATROX EXPRESSLY DISCLAIMS ALL WARRANTIES, EXPRESS AND IMPLIED, INCLUDING, BUT NOT LIMITED TO, THE IMPLIED WARRANTIES OF MERCHANTABILITY, FITNESS FOR A PARTICULAR PURPOSE AND NON-INFRINGEMENT. MATROX DOES NOT WARRANT THAT THE CONTENTS OF THE SOFTWARE OR DOCUMENTATION WILL MEET LICENSEE'S REQUIREMENTS, OR THAT THE OPERATION OF THE SOFTWARE OR DOCUMENTATION WILL BE UNINTERRUPTED OR ERROR-FREE. THE ENTIRE RISK ASSOCIATED WITH THE USE OF THE SOFTWARE AND

DOCUMENTATION IS ASSUMED BY LICENSEE. FURTHERMORE, MATROX DOES NOT WARRANT OR MAKE ANY REPRESENTATIONS REGARDING THE USE OR THE RESULTS OF THE USE OF THE SOFTWARE OR DOCUMENTATION IN TERMS OF ITS CORRECTNESS, ACCURACY, RELIABILITY, CURRENTNESS, OR OTHERWISE. SHOULD THE CONTENTS OF THE SOFTWARE OR DOCUMENTATION PROVE DEFECTIVE, LICENSEE ASSUMES THE ENTIRE COST OF ALL NECESSARY SERVICING, REPAIR OR CORRECTION. SOME JURISDICTIONS DO NOT ALLOW THE EXCLUSION OF IMPLIED WARRANTIES, SO THE ABOVE EXCLUSION MAY NOT APPLY TO LICENSEE.

LICENSEE ACKNOWLEDGES AND AGREES THAT LICENSEE IS SOLELY RESPONSIBLE FOR DETERMINING WHETHER ANY THIRD PARTY PATENT OR COPYRIGHT LICENSES, INCLUDING BUT NOT LIMITED TO VARIOUS AUDIO AND VISUAL STANDARDS, ARE NECESSARY TO USE, IMPLEMENT OR DISTRIBUTE THIS PRODUCT, WHICH INCLUDES ANY OR ALL SOFTWARE OR HARDWARE. LICENSEE IS RESPONSIBLE TO ADVISE LICENSEE'S CUSTOMERS OF THE LIMITATIONS PROVIDED HEREIN.

LIMITATION OF LIABILITY

UNDER NO CIRCUMSTANCES SHALL MATROX, ITS SISTER COMPANIES AND ITS SUBSIDIARIES BE LIABLE FOR ANY DIRECT, INDIRECT, PUNITIVE, INCIDENTAL, SPECIAL, OR CONSEQUENTIAL DAMAGES THAT RESULT FROM THE USE OF, OR INABILITY TO USE, THE SOFTWARE. THIS LIMITATION APPLIES WHETHER THE ALLEGED LIABILITY IS BASED ON CONTRACT, TORT, NEGLIGENCE, STRICT LIABILITY, OR ANY OTHER BASIS, EVEN IF MATROX HAS BEEN ADVISED OF THE POSSIBILITY OF SUCH DAMAGE. BECAUSE SOME JURISDICTIONS DO NOT ALLOW THE EXCLUSION OR LIMITATION OF INCIDENTAL OR CONSEQUENTIAL DAMAGES, MATROX'S LIABILITY IN SUCH JURISDICTIONS SHALL BE LIMITED TO THE MINIMUM REQUIRED BY LAW.

UNAUTHORIZED USE. THIS SOFTWARE AND ANY DOCUMENTATION RELATED THERETO ARE NOT DESIGNED, INTENDED, AUTHORIZED OR WARRANTED TO BE SUITABLE FOR USE OR RESALE IN ANY TYPE OF SYSTEM OR OTHER APPLICATIONS RELATED TO, HAZARDOUS OR POTENTIALLY HAZARDOUS ENVIRONMENTS OR APPLICATIONS REQUIRING HIGH-AVAILABILITY OR FAIL-SAFE PERFORMANCE, WHERE PERSONAL INJURY OR DEATH MAY OCCUR, SUCH AS MEDICAL SYSTEMS, LIFE SUSTAINING, LIFE SAVING SYSTEMS, OPERATION OF NUCLEAR FACILITIES, AIRCRAFT NAVIGATION OR COMMUNICATION SYSTEMS, AIR TRAFFIC CONTROL, PUBLIC WORKS, WEAPONS SYSTEMS, OR ANY OTHER APPLICATION IN WHICH THE FAILURE OF A PRODUCT COULD LEAD TO PROPERTY DAMAGE, ENVIRONMENTAL DAMAGE, OR PERSONAL INJURY. LICENSEE WILL NOT USE, OR PERMIT TO BE USED, THE PRODUCTS FOR SUCH HIGH-AVAILABILITY, FAIL-SAFE OR CRITICAL APPLICATIONS AND FURTHER, LICENSEE AGREES TO INDEMNIFY, DEFEND AND HOLD HARMLESS MATROX AND ITS MANAGERS, DIRECTORS, OFFICERS, EMPLOYEES, AGENTS, AFFILIATES, SUCCESSORS, AND ASSIGNS FROM AND AGAINST ANY ACTION, SUIT, PROCEEDING, COST, EXPENSE, DAMAGES, AND LIABILITY (INCLUDING, BUT NOT LIMITED TO, REASONABLE ATTORNEYS' FEES) ARISING OUT OF, OR RELATED TO, THE BREACH OF LICENSEE'S OBLIGATIONS RELATED HERETO, EVEN IF SUCH CLAIM ALLEGES THAT MATROX WAS NEGLIGENT REGARDING THE DESIGN OR MANUFACTURE OF THE SOFTWARE.

TERMINATION

This License will automatically terminate if Licensee fails to comply with any of the terms and conditions hereof. In such event, Licensee must destroy all copies of the Software and all of its component parts. Matrox reserves the right to terminate this License without prejudice to any additional recourses Matrox may have against Licensee if Licensee violates any of this Licenses' terms and conditions.

Matrox will not, by reason of the termination of this Agreement, be liable for compensation, reimbursement or damages on account of the loss of prospective profits on anticipated sales, or on account of expenditures, investments, leases, or commitments in connection with the Licensee's business or goodwill or otherwise.

If Licensee commences or participates in any legal proceeding against Matrox then Matrox may, in its sole discretion, suspend or terminate all license grants and any other rights provided under this License during the pendency of such legal proceedings.

MISCELLANEOUS

If any provision of this License is inconsistent with, or cannot be fully enforced under, the law, such provision will be construed as limited to the extent necessary to be consistent with and fully enforceable under the law. This License is the final, complete and exclusive agreement between the parties relating to the subject matter hereof, and supersedes all prior or contemporaneous understandings and agreements relating to such subject matter, whether oral or written. This License may only be modified in writing signed by an authorized officer of Matrox. Licensee agrees that it will not ship, transfer or export the Software into any country, or use the Software in any manner, prohibited by the United States Bureau of Industry and Security or any export laws, restrictions or regulations.

Controlling Law. The validity, performance and construction hereof shall be governed by and interpreted in accordance with the laws of the Province of Quebec. Both parties hereby irrevocably submit to the exclusive jurisdiction of the Courts of the district of Montreal, Province of Quebec, Canada with regard to any dispute arising out of or in connection with this Agreement.

Additional information may be available on the Matrox website. If used, this site may contain other proprietary notices and copyright information, the terms of which must also be observed and followed.

The failure of Matrox to enforce at any time any of the provisions of this Agreement, or the failure to require at any time performance by the Licensee of any of the provisions of this Agreement, shall in no way be construed to be a present or future waiver of such provisions, nor in any way affect the right of Matrox to enforce each and every such provision thereafter.

All rights reserved by Matrox.

Matrox reserves the right to change Software specification without notice. All intellectual property, including without limitation, trademarks and copyrights are the property of their respective owners and any unauthorized use thereof is strictly prohibited.

COPYRIGHT © 2012 Matrox is a trademark of Matrox Electronic Systems Ltd.

Matrox End-User VFW Software Codec License Agreement (“Agreement”)

IMPORTANT - PLEASE READ THIS LICENSE AGREEMENT CAREFULLY BEFORE INSTALLING, COPYING OR USING THE SOFTWARE. THIS IS A LEGAL AGREEMENT BETWEEN YOU THE END USER (“END USER”) AND MATROX ELECTRONIC SYSTEMS LTD. (“MATROX”) CONCERNING THE MATROX VIDEO FOR WINDOWS SOFTWARE CODEC PACKAGE (COLLECTIVELY, THE “SOFTWARE”) WHICH END USER WISHES TO USE FOR PERSONAL USE. END USER ACKNOWLEDGES AND AGREES THAT IT WILL BE LEGALLY BOUND BY THE TERMS OF THIS AGREEMENT.

Supported formats: DV/DVCAM, DVCPRO, DVCPRO50, DVCPRO HD, MPEG-2 I-frame SD, MPEG-2 I-frame HD (includes 720p, full-size 1080i/p, and 1440x1080i/p), MPEG-2 I-frame SD + Alpha, MPEG-2 I-frame HD + Alpha, Offline HD, HDV and EZ-HDV (playback only), Uncompressed 8-bit and 10-bit SD, Uncompressed 8-bit and 10-bit HD, Uncompressed 8-bit and 10-bit SD + Alpha, Uncompressed 8-bit and 10-bit HD + Alpha, EZ-MXF (playback only), and Motion-JPEG (playback only).

1. LICENSE

Matrox hereby grants the End User a non-exclusive, non-transferable, royalty-free, right to use and copy in object code form the Software for internal purposes in conjunction with a Matrox product only (the “Purpose”), subject to the terms and conditions of this Agreement. End user shall only use the Software on a single computer at a time. End User must maintain all copyright notices on all copies of the Software. Matrox may make changes to the Software at any time without prior notice. In addition, Matrox is under no obligation whatsoever to update, maintain, or provide new versions of the Software or to provide any support in connection with the Software.

2. RESTRICTIONS

End User agrees that it will not: (a) sell, rent, assign or transfer or grant a sublicense of the Software or the license contained herein to any other party; (b) adapt, alter, modify, prepare derivative works from, merge or transfer the Software; (c) break or attempt to break the protection algorithm, reverse engineer, reverse assemble, reverse compile or otherwise translate the Software or any portion thereof, even if permitted under any provision of any applicable laws; (d) use Matrox's name, logo or trademark to market its own products; (e) use, reproduce alter and redistribute the Software in whole or in part other than for the Purpose.

End User may not use the Software for any unlawful purpose, including infringement of the copyrights or other propriety rights of others, or in any illegal manner or for creation or distribution of unlawful content. End User agrees to indemnify Matrox for any and all claims arising from any violation by it of the terms of this License Agreement.

End User acknowledges that the Software is subject to export laws and agrees to comply with all applicable international and national laws that apply to these products.

3. COPYRIGHT AND OWNERSHIP

End User acknowledges and agrees that the Software and all associated documentation, including logos, names and other support materials furnished in this package are exclusively owned by Matrox and/or its suppliers. The Software codes, structure and organization are the valuable trade secrets of Matrox. The Software and all associated documentation are also protected by copyright laws and international copyright treaties, as well as other intellectual property laws and treaties. No title to the intellectual property in the Software, the documentation, magnetic/optical/solid-state media or any other material provided therewith is transferred to End User by this Agreement. This Agreement does not convey to End User an interest in or to the Software, but only a limited right to use the Software in accordance with the terms of this Agreement. The Software is licensed to End User and not sold.

4. EXCLUSION OF WARRANTY

MATROX PROVIDES TO END USER THE SOFTWARE AND RELATED DOCUMENTATION ON AN “AS IS” BASIS WITHOUT ANY WARRANTY OF ANY KIND, EITHER EXPRESSED OR IMPLIED INCLUDING BUT NOT LIMITED TO ANY IMPLIED WARRANTY OF MERCHANTABILITY, NON-INFRINGEMENT OR FITNESS FOR A PARTICULAR PURPOSE AS WELL AS THE WARRANTY AGAINST HIDDEN OR LATENT DEFECTS, ALL OF WHICH MATROX SPECIFICALLY DISCLAIMS (AND THE CUSTOMER BY ACCEPTING THE PRODUCT SPECIFICALLY ACCEPTS SUCH DISCLAIMER AND WAIVER) TO THE MAXIMUM

EXTENT PERMITTED BY LAW. THE ENTIRE RISK AS TO THE RESULTS AND PERFORMANCE OF THE SOFTWARE IS ASSUMED BY END USER. SHOULD THE SOFTWARE PROVE DEFECTIVE, END USER (AND NOT MATROX, ITS DISTRIBUTORS OR DEALERS) ASSUMES THE ENTIRE COST OF ALL NECESSARY SERVICING, REPAIR OR CORRECTION.

MATROX DOES NOT WARRANT THAT THE SOFTWARE WILL MEET END USER'S REQUIREMENTS OR THAT ITS OPERATION WILL BE ERROR-FREE.

MATROX HAS NO OBLIGATION TO INDEMNIFY, DEFEND OR HOLD END USER HARMLESS FROM AND AGAINST ANY CLAIM THAT ANY THIRD PARTY SOFTWARE INFRINGES ANY THIRD PARTY PATENT, COPYRIGHT, TRADEMARK OR OTHER INTELLECTUAL PROPERTY RIGHT. END USER WILL PROMPTLY NOTIFY MATROX IN WRITING OF ANY SUCH CLAIM.

MATROX HAS NO OBLIGATION TO INDEMNIFY, DEFEND OR HOLD END USER HARMLESS FROM AND AGAINST ANY CLAIMS OF INFRINGEMENT OF INTELLECTUAL PROPERTY THAT READS UPON OR IS INFRINGED BY A GENERALLY RECOGNIZED AUDIO, VIDEO, TECHNOLOGY OR PATENT STANDARD OR RECOMMENDATIONS, INCLUDING WITHOUT LIMITATION AVC/H.264, IEEE 1394, JPEG, JPEG2000, MPEG-1, MPEG-2 AND MPEG-4.

5. LIMITATION OF LIABILITY

A Each party as well as any of its officers, employees, suppliers, agents or subcontractors shall under no circumstance whatsoever and whether a claim is based on breach of contract or warranty, infringement or any other intellectual property claims, negligence, strict liability in tort or otherwise or arises under any other doctrine in law or equity, be liable to or have to indemnify the other party for:

- (i) Indirect, special, incidental, punitive and consequential damages, whether foreseeable or unforeseeable, and even if advised of the possibility of such damages or losses;
- (ii) Damages arising from loss of use, data, profits, production revenue, bargain, business, revenues, anticipated savings, opportunities, investment or loss or production, wasted expenditures, costs of substitute goods or services and generally any kind of economic, commercial and financial loss arising directly or indirectly out of or in connection with this Agreement, including without limitation all such damages and losses resulting from the use of the Software, any mistakes, errors, delays, defects, failures, defaults, interruptions or generally any acts or omissions, whether or not the party has been advised of the possibility of such damages or losses. The total and cumulative liability from one party to the other party arising from or in connection with this Agreement (whether liabilities arise from breach of contract or warranty, negligence, strict liability in tort or otherwise or under any other doctrine in law or equity) shall under no circumstance exceed the aggregate of all fees and payments actually received by Matrox from End User under this Agreement.

B Matrox will have no obligations under this section or otherwise with respect to any infringement claim in whole or in part based upon any direct, contributory or other infringement related to the licensed Software, or the use thereof, with respect to (including conformance to) any standards promulgated, revised or maintained by a standards organization, standards bodies or similar private or public organization, including, without limitation, the various standards promulgated by the MPEG Licensing Authority, LLC (or MPEG LA). Matrox has no obligation to indemnify, defend or hold End User harmless from and against any claims of infringement of intellectual property that reads upon or is infringed by a generally recognized audio, video, technology or patent standard or recommendations, including without limitation AVC/H.264, IEEE 1394, JPEG, JPEG2000, MPEG-1, MPEG-2 and MPEG-4.

6. CONFIDENTIALTY

Except as licensed hereunder, End User shall treat the Software and all related information as confidential information and refrain from making any such information or the Software itself available to any other person. End User will take commercially reasonable precautions to safeguard the confidentiality of the Software, including those taken by End User to protect its own trade secrets. The obligation of confidentiality shall not apply or shall cease to apply to any information that (a) was known to End User independently of its receipt hereunder; (b) is or becomes publicly available without breach of this Agreement; or (c) is disclosed by End User

pursuant to court order or other requirement imposed by law, provided that Matrox is given a reasonable opportunity to object to or restrict such disclosure requirement to the extent practicable, and then such disclosure shall be permitted only subject to the terms and conditions of such order or other legal requirement.

7. TERMINATION

This Agreement is effective until terminated. End User may terminate this Agreement at any time by destroying all copies of the Software and related materials. This Agreement is conditioned upon End User's continued compliance with the Agreement and will terminate automatically and irrevocably if End User fails to comply with any material term or condition of this Agreement. Matrox will provide written notice to End User of such termination in advance where practical, or otherwise promptly following such termination. Such termination is without prejudice to Matrox's other rights hereunder at law or in equity. In event of termination, End User must destroy all copies of the Software and related materials and certify in writing and under oath that all such copies have been destroyed, and End User's license and rights under this Agreement shall terminate. In the event of termination of this Agreement, the provisions of Sections 2, 3, 4, 6, 7, 8 and 10 shall survive and will remain in full force and effect.

8. GENERAL

8.1. Matrox shall not be liable for delay or failure in performance resulting from acts beyond its reasonable control, including but not limited to acts of God, acts of war, terrorism, riot, fire, flood, or other disaster, acts of government, strike, lockout, communication line or power failure.

8.2. End User shall not have the right to assign the benefit of this Agreement without the prior written permission from Matrox and then only under such conditions as Matrox may reasonably determine.

8.3. If any provision of this Agreement is declared by a body of competent jurisdiction to be invalid, such provision shall be severed from this Agreement and the other provisions shall remain in full force and effect.

8.4. A term or condition of this Agreement can be waived or modified only with the written consent of both parties. Forbearance or indulgence by either party in any regard shall not constitute a waiver of the term or condition to be performed, and either party may invoke any remedy available under this Agreement or by law despite such forbearance or indulgence.

8.5. The relationship between Matrox and you is that of an independent contractor and its customer and under no circumstances shall either party, its agents or employees be deemed agents or representatives of the other party. Neither party shall have the right to enter into any contracts or commitments in the name of or on behalf of the other party in any respect whatsoever. In addition, neither party shall hold itself out to anyone, or otherwise represent, that it has any such authority vis-a-vis the other party.

Both parties agree to comply with all applicable laws, rules, regulations, orders and ordinances of the state, province and/or country where it resides and in any other state, province and/or country with jurisdiction over it or its activities in performance of its obligations hereunder, including without limitation all applicable duty, taxes, import and/or export regulations and all licensing or permit requirements.

8.6. This Agreement and any schedule attached hereto contains the complete and exclusive statement of the agreement between the parties and supersedes all prior and contemporaneous agreements, including, but not limited to, understandings, proposals, negotiations, representations or warranties of any kind whether oral or written with respect to the subject matter hereof. No oral or written representation which is not expressly contained in this Agreement is binding on Matrox or End User.

8.7. This Agreement will be governed by and construed in accordance with the laws of the Province of Quebec. The United Nations Convention on Contracts for the International Sale of Goods shall not apply to this Agreement.

9. UNAUTHORIZED USE

THIS SOFTWARE AND ANY DOCUMENTATION RELATED THERETO ARE NOT DESIGNED, INTENDED, AUTHORIZED OR WARRANTED TO BE SUITABLE FOR USE OR RESALE IN ANY TYPE OF SYSTEM OR

OTHER APPLICATIONS RELATED TO, HAZARDOUS OR POTENTIALLY HAZARDOUS ENVIRONMENTS OR APPLICATIONS REQUIRING HIGH-AVAILABILITY OR FAIL-SAFE PERFORMANCE, WHERE PERSONAL INJURY OR DEATH MAY OCCUR, SUCH AS MEDICAL SYSTEMS, LIFE SUSTAINING, LIFE SAVING SYSTEMS, OPERATION OF NUCLEAR FACILITIES, AIRCRAFT NAVIGATION OR COMMUNICATION SYSTEMS, AIR TRAFFIC CONTROL, PUBLIC WORKS, WEAPONS SYSTEMS, OR ANY OTHER APPLICATION IN WHICH THE FAILURE OF A PRODUCT COULD LEAD TO PROPERTY DAMAGE, ENVIRONMENTAL DAMAGE, OR PERSONAL INJURY. LICENSEE WILL NOT USE, OR PERMIT TO BE USED, THE PRODUCTS FOR SUCH HIGH-AVAILABILITY, FAIL-SAFE OR CRITICAL APPLICATIONS AND FURTHER, LICENSEE AGREES TO INDEMNIFY, DEFEND AND HOLD HARMLESS MATROX AND ITS MANAGERS, DIRECTORS, OFFICERS, EMPLOYEES, AGENTS, AFFILIATES, SUCCESSORS, AND ASSIGNS FROM AND AGAINST ANY ACTION, SUIT, PROCEEDING, COST, EXPENSE, DAMAGES, AND LIABILITY (INCLUDING, BUT NOT LIMITED TO, REASONABLE ATTORNEYS' FEES) ARISING OUT OF, OR RELATED TO, THE BREACH OF LICENSEE'S OBLIGATIONS RELATED HERETO, EVEN IF SUCH CLAIM ALLEGES THAT MATROX WAS NEGLIGENT REGARDING THE DESIGN OR MANUFACTURE OF THE SOFTWARE.

10. CHOICE OF LAW

This Agreement shall be governed by and interpreted in accordance with the laws of the Province of Quebec, excluding any conflict of laws provisions. All disputes arising out of this Agreement shall be subject to the exclusive jurisdiction of the courts of the Province of Quebec, district of Montreal, and the parties agree and submit to the personal and exclusive jurisdiction and venue of these Courts.

Contents

Chapter 1

Introducing Matrox Mojito 4K

Welcome to Matrox Mojito 4K.....	2
System requirements	2
Supported programs	2
Check our website for equipment information.....	2
About this manual.....	2
Style conventions	3
Last-minute information.....	3

Chapter 2

Installing Your Matrox Mojito 4K Hardware and Software

Before installing your Matrox hardware	6
Start with a functioning system.....	6
Avoid costly damage	6
Setting the genlock termination switch	7
Installing your Matrox Mojito 4K card.....	7
Installing Matrox Mojito 4K software.....	8
Updating your Mojito 4K firmware	8
Installing additional Matrox WYSIWYG plug-ins or removing unneeded plug-ins.....	8
Important note about sleep and hibernation modes	9
Removing your Matrox Mojito 4K software.....	9

Chapter 3

Connecting External Devices to Matrox Mojito 4K

Available connections.....	12
Connecting devices to Matrox Mojito 4K	12
Video output mapping	13

Chapter 4

Using Matrox Mojito 4K with Supported Programs

Working with Adobe Premiere Pro	16
Enabling output on Matrox Mojito 4K	16
Selecting a sequence preset for use with Matrox Mojito 4K.....	16
Working with Adobe Prelude	17

Working with Adobe Encore.....	17
Working with Adobe SpeedGrade.....	18
Using the Matrox WYSIWYG plug-ins.....	19
Configuring the Matrox WYSIWYG Control Panel	19
Required steps to use the WYSIWYG plug-ins	19
Defining your playback settings	20
Supported video output formats	22
 Chapter 5	
Monitoring Your Matrox Mojito 4K System	
Using X.info to display Mojito 4K information.....	24
Displaying system information	24
Displaying hardware information	26
Monitoring your Mojito 4K card's operating temperatures	27
Error notification	27
 Appendix A	
Matrox Mojito 4K Specifications	
General.....	30
Connections	30
Environmental specifications	31
 Appendix B	
Matrox Customer Support	
How to get Matrox customer support	34
Registration	34
Keep up to date with our website	34
Contacting us	34
 Index	35

1

Introducing Matrox Mojito 4K

This chapter lists the Mojito 4K system requirements, and describes the Mojito 4K documentation.

Welcome to Matrox Mojito 4K

Matrox Mojito 4K is a quad 3G-SDI card that provides realtime monitoring and output of video footage at resolutions ranging from SD up to 4K (4096×2160) at 59.94 fps. With support for Adobe creative tools such as Premiere Pro, After Effects, and Photoshop, you can edit and finish your productions while ensuring that what you see is what you are delivering. Matrox Mojito 4K provides the highest quality video editing experience by outputting projects with 1:1 pixel accuracy and 10-bit color precision to the monitor.

Matrox Mojito 4K supports up to eight or 16 channels of embedded SDI audio output so that you can choose from working with a simple stereo mix to surround sound and beyond for all your post-production needs.

System requirements

Matrox Mojito 4K requires a computer system with the following configuration:

- HP Z820 workstation with one of the following processors:
 - 3.3 GHz dual quad-core Intel Xeon E5-2643 (for 4K at 29.97 fps playback).
 - 2.7 GHz dual 8-core Intel Xeon E5-2680 (for 4K at 59.94 fps playback).
- Microsoft Windows 7 (64-bit) with Service Pack 1.
- 32 GB of RAM.
- One free x8 PCIe slot (x8 electrical).
- An NVIDIA GeForce GTX 780 (3 GB) display card is recommended.

Supported programs

For a complete list of the Adobe applications supported for using Matrox Mojito 4K with the current software release, see the “Supported OS and Applications” document provided in the “Downloads” section of the Matrox Mojito 4K Support website at www.matrox.com/video/support.

Check our website for equipment information

For up-to-date information about system requirements and Matrox-tested systems for Matrox Mojito 4K, check the “System Recommendations” section of the Matrox Mojito 4K Support website at www.matrox.com/video/support.

About this manual

This manual provides you with information about installing and using your Matrox Mojito 4K hardware and software, including how to configure supported applications for use with Matrox Mojito 4K.

Style conventions

The following style conventions are used in this manual:

- The names of files, folders, and manuals appear in *italics*. For example:
 - The data is stored in the *Sample.mxf* file.
 - The file is located in the \Clips folder.
 - Please refer to your *Matrox Mojito 4K Release Notes*.
- Menus and commands that you need to choose are displayed in the form **Menu > Command**. For example, **File > Save** means click **File** in the menu bar, and then click **Save** in the menu that appears.

Last-minute information

- Any important information that wasn't available for inclusion in this manual by publication time is provided to you in the *Matrox Mojito 4K Release Notes*.

Your notes

2

Installing Your Matrox Mojito 4K Hardware and Software

This chapter explains how to install the Matrox Mojito 4K hardware and software.

Before installing your Matrox hardware

Read the following information carefully before attempting to install the Matrox Mojito 4K card.

Start with a functioning system

Before attempting any Matrox Mojito 4K installation, you should have a computer with a supported Windows operating system fully installed and functioning smoothly. This will avoid potential problems later on.

Avoid costly damage

Static electricity from your body can damage your Matrox Mojito 4K card or your computer. Although you may not notice it, static electricity is generated every time you move. It's often too small to cause a spark, but it can still cause damage to sensitive electronic components or at least reduce their life span.

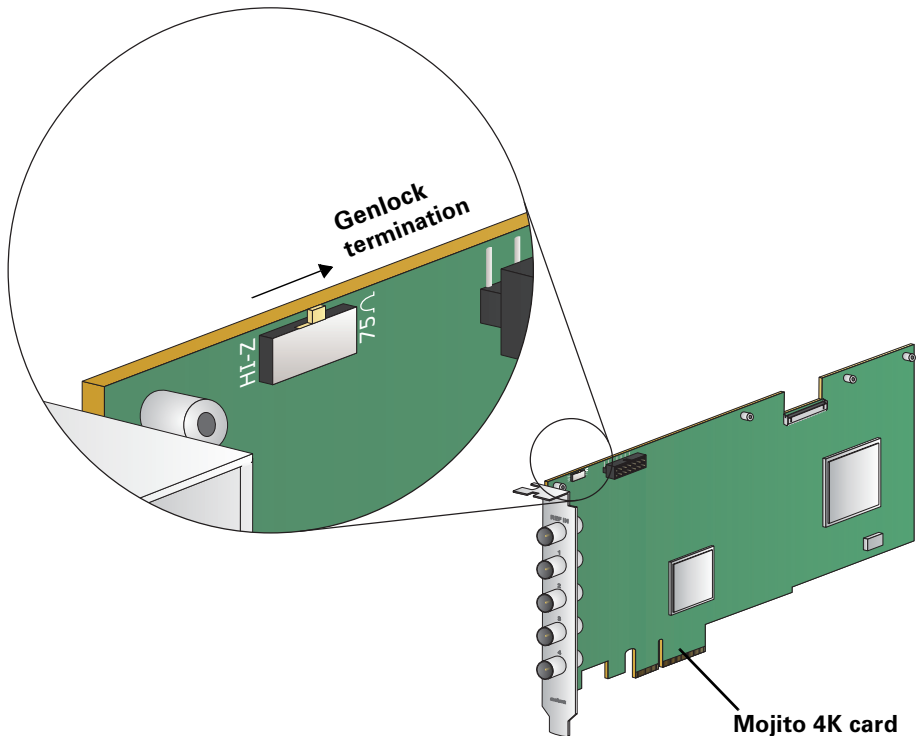
To avoid damage, please observe the following precautions:

- Do not remove your Matrox Mojito 4K card from its antistatic bag until you're ready to install it. Before removing the card, place the package within easy reach of the area where you intend to perform the installation.
- You should avoid touching the chips and other components on the circuit board. Try to handle the card by its edges.
- Try to work in an area where the relative humidity is at least 50%.
- Do not wear wool or synthetic clothing. These fabrics tend to generate more static electricity than cotton, which is best for this kind of work.
- Turn off the power switches on your computer and its connected components.

Once you've opened your computer, drain static electricity from your body by touching a bare metal surface on your computer chassis before you install or remove any parts of your system. If you have a grounding wrist strap, use it while handling and installing any components in your computer.

Setting the genlock termination switch

Matrox Mojito 4K features a genlock termination switch that must be set to 75Ω to terminate the reference input before installing the Mojito 4K card.



Installing your Matrox Mojito 4K card

The Matrox Mojito 4K card is a three-quarter length PCIe (x8) card designed to operate in your computer's x8 (electrical) PCIe slot.

For detailed instructions on how to perform the following steps, refer to your computer's documentation.

- 1 Shut down the computer, unplug the power cord and all the cables from the unit, and open the computer's chassis.
- 2 Insert the Matrox Mojito 4K card in an available PCIe x8 (electrical) slot in the computer, and secure the card into place.



Caution To avoid overheating issues, don't install the Matrox Mojito 4K card close to another card that generates heat, such as a display card.

- 3 Close the computer chassis, and reconnect the power cord and all the cables to the unit.

Installing Matrox Mojito 4K software

Matrox Mtx.utils Setup installs the Mojito 4K device drivers, and all the software required to use your Mojito 4K card with supported programs. The Matrox Video for Windows (VFW) software codecs are included so that you can play back Matrox .avi files on your Mojito 4K system. Before installing Matrox Mtx.utils, make sure that you've installed the third-party software that you want to use with Mojito 4K, such as Adobe Premiere Pro.

You can install Matrox Mtx.utils on a computer with or without the Matrox Mojito 4K card installed. To download and install the latest version of Matrox Mtx.utils, visit the Support section of our website at www.matrox.com/video/support. You can also contact your Matrox representative for the latest software.

Updating your Mojito 4K firmware

When you install Mtx.utils while your Mojito 4K card is installed in your computer, the Mtx.utils Setup program automatically verifies the firmware on your Mojito 4K card and updates it if required. If you install Mtx.utils on a computer without the Mojito 4K card, the next time you start your computer with your Mojito 4K card installed, Mtx.utils Setup will update your Mojito 4K firmware if needed.



Caution Do not power off your computer, or interrupt the firmware update during the update process. Doing so may damage your Mojito 4K card.

Installing additional Matrox WYSIWYG plug-ins or removing unneeded plug-ins

When you install Matrox Mtx.utils, you are given the option to install the Matrox WYSIWYG plug-ins for any supported programs that are currently installed on your system. If after you've installed Matrox Mtx.utils you want to install additional Matrox WYSIWYG plug-ins, or re-install or remove a currently installed plug-in, you can update your system by choosing **Start > All Programs > Matrox Mtx.utils > Update Matrox WYSIWYG Plug-ins**. You'll be prompted to specify which plug-ins you want to install, re-install, or remove. For more information about the programs supported and required settings, see [“Using the Matrox WYSIWYG plug-ins”](#) on page 19.”



Note To install the Matrox WYSIWYG plug-in for a program, you must first install that program.

Important note about sleep and hibernation modes

Your system's sleep and hibernation modes are not supported by the Matrox Mtx.utils software. To avoid stability issues, disable sleep and hibernation modes on your system after installing Matrox Mtx.utils.

Removing your Matrox Mojito 4K software

Perform the following steps to remove the Mojito 4K software from your computer. When uninstalling the Mojito 4K software, your current Mojito 4K settings are kept for future Mojito 4K software installations.

- 1** Choose **Start > All Programs > Matrox Mtx.utils > Uninstall Matrox Mtx.utils**.
- 2** Click **Next**.

Your notes

3

Connecting External Devices to Matrox Mojito 4K

This chapter explains how to connect external devices to Mojito 4K.

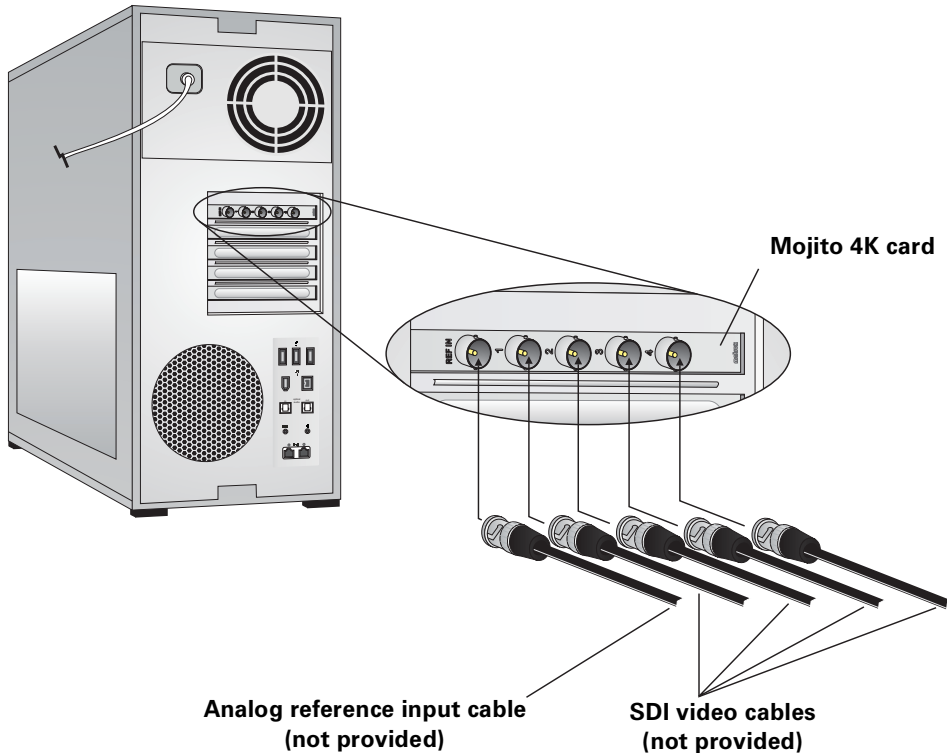
Available connections

Matrox Mojito 4K offers the following connections:

- **Four SDI outputs** Each SDI output supports one SDI video stream. Up to 16 channels of embedded audio are supported for SD, HD, and QFHD resolutions, and up to eight channels of embedded audio are supported for 2K and 4K resolutions.
- **One REF IN connector** Used to connect an analog reference input source (tri-level sync for HD or bi-level black burst for SD).

Connecting devices to Matrox Mojito 4K

Use your SDI cables (not provided) to connect an SDI output (1, 2, 3, or 4) on the Matrox Mojito 4K card to an SDI video input on your monitor. You can use the REF IN connector to connect an analog reference input source (cable not provided).



Video output mapping

To output QFHD or 4K video, all four SDI output connectors are required, and each output displays one quarter of the picture as follows:

- SDI 1: Top left
- SDI 2: Top right
- SDI 3: Bottom left
- SDI 4: Bottom right

Your notes

4

Using Matrox Mojito 4K with Supported Programs

This chapter explains how to define various settings for using your Mojito 4K with supported programs.

Working with Adobe Premiere Pro

Matrox Mojito 4K supports all available sequence presets to output video and audio played back in Adobe Premiere Pro. Selecting a Matrox 2K, QFHD, or 4K preset enables full-raster H.264 intra-frame video previews in your sequence's video format.

Enabling output on Matrox Mojito 4K

To use your Matrox Mojito 4K hardware to output video and audio played back in Adobe Premiere Pro, set your video and audio devices to use the Matrox Player as follows:

- 1 Start Adobe Premiere Pro and either open an existing project, or create a new project.
- 2 Choose **Edit > Preferences > Playback**.
- 3 From the **Audio Device** list, select **Matrox Player**.
- 4 Under **Video Device**, select **Matrox Player**.
- 5 Click **Setup** beside **Matrox Player** under **Video Device**, and specify your settings for playback as explained in [“Defining your playback settings”](#) on page 20.



Note Closed captions in Adobe Premiere Pro are not supported on the Mojito 4K video outputs.

Selecting a sequence preset for use with Matrox Mojito 4K

When you create a new sequence in your Adobe Premiere Pro project for use with Matrox Mojito 4K, you can select a Matrox preset that applies settings for rendering H.264 intra-frame previews in your sequence's video format, and configures the sequence to output your mono or stereo audio to appropriate SDI output channels on your Matrox Mojito 4K hardware.

- 1 Choose **File > New > Sequence**. The **New Sequence** dialog box opens on the **Sequence Presets** page.
- 2 From the list of **Available Presets**, expand the **Matrox** folder and select the preset for the type of sequence that you want to create. For example, to create a sequence for editing 4096×2160p (4K) @ 29.97 fps material with mono audio, select the **4096x2160p 29.97** preset under **Mono > 4K**.



Note The Matrox mono sequence presets provide eight mono audio tracks that are mapped to the corresponding Mojito 4K SDI output channels (A1 to channel 1, A2 to channel 2, and so on). The Matrox stereo sequence presets provide four stereo audio tracks with each stereo pair output to two SDI output channels (A1 to channels 1 and 2, A2 to channels 3 and 4, and so on).

- 3 In the **Sequence Name** box, specify a name for your sequence.

- 4 Specify any other sequence settings that you want as explained in your Adobe Premiere Pro documentation, and click **OK** to apply the settings.

Working with Adobe Prelude

To use your Matrox Mojito 4K hardware to output video and audio played back in Adobe Prelude, set your video and audio devices to use the Matrox Player as follows:

- 1 Start Adobe Prelude and either open an existing project, or create a new project.
- 2 Choose **Edit > Preferences > Playback**.
- 3 From the **Audio Device** list, select **Matrox Player**.
- 4 Under **Video Device**, select **Matrox Player**.
- 5 Click **Setup** beside **Matrox Player** under **Video Device**, and specify your settings for playback as explained in [“Defining your playback settings”](#) on page 20.


Working with Adobe Encore

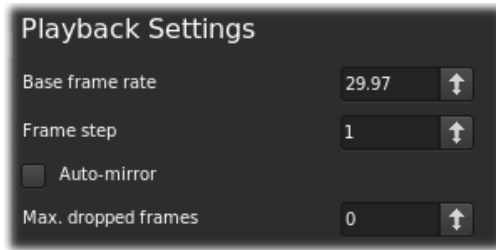
To use your Matrox Mojito 4K hardware to output video and audio played back in Adobe Encore, set your video and audio devices to use the Matrox Player as follows:

- 1 Start Adobe Encore and either open an existing project, or create a new project.
- 2 Choose **Edit > Preferences > Audio/Video Out**.
- 3 From the **Audio Device** list, select **Matrox Player**.
- 4 Under **Video Device**, select **Matrox Player**.
- 5 Click **Setup** beside **Matrox Player** under **Video Device**, and specify your settings for playback as explained in [“Defining your playback settings”](#) on page 20.

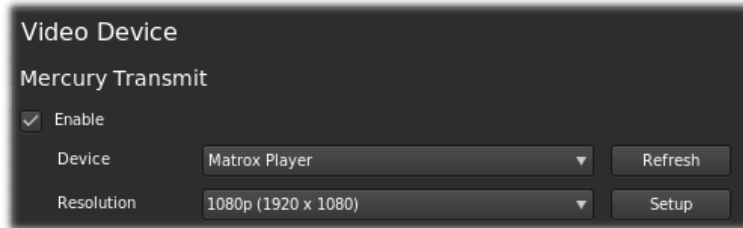
Working with Adobe SpeedGrade

You can use your Matrox Mojito 4K hardware to output video played back in Adobe SpeedGrade as follows:

- 1 Start Adobe SpeedGrade and click **Preferences** () at the top left of the window.
- 2 In the **Preferences** dialog box, click **Playback** and set the base frame rate for the playback, such as **29.97**.



- 3 Click **Display** and select **Enable** under **Mercury Transmit**.



- 4 From the **Device** list, select **Matrox Player**.
- 5 Click **Setup** beside **Resolution** and specify the video output settings you want for previewing your video as explained in [“Defining your playback settings”](#) on page 20.



Note The resolution selected in SpeedGrade is ignored when using the Matrox Player to output video on Mojito 4K.


- 6 Click **OK** to return to the **Preferences** dialog box.

For more information about using Adobe SpeedGrade, see your Adobe SpeedGrade documentation.

Using the Matrox WYSIWYG plug-ins

The Matrox WYSIWYG plug-ins for Adobe After Effects and Photoshop let you preview your composition in After Effects or image in Photoshop on your video monitor. This lets you see the exact color temperature, safe-title area, and any interlaced artifacts as you work.

Configuring the Matrox WYSIWYG Control Panel

The Matrox WYSIWYG Control Panel lets you specify the settings you want for previewing video on your video monitor. To use the Matrox WYSIWYG Control Panel, right-click the  icon on your Windows taskbar. If you don't see the icon, check your taskbar properties and make sure that you're showing the icons for your Matrox applications. If you still don't see the icon, choose **Start > All Programs > Matrox Mtx.utils > Matrox WYSIWYG Control Panel**.



Note By default, the Matrox WYSIWYG output to your video monitor is enabled. To disable it, clear the **Enable WYSIWYG Output** option in the Control Panel.

- 1 Choose **Output Configuration** and specify the video output settings you want for previewing your video as explained in [“Defining your playback settings”](#) on page 20.
- 2 From the **Preview Type** menu, select one of the following options for the preview:
 - **Video** Select this to view your composition/image.
 - **Alpha Channel** Select this to view only the grayscale alpha-key (matte) information from your composition/image.
- 3 From the **Scaling** menu, select one of the following options for your preview output:
 - **Scale to fit** Select this to scale your composition/image to your selected video output format (the aspect ratio will be preserved).
 - **Original Size** Select this to output your composition/image without any scaling. The output will be centered on your video monitor, and cropped if needed.

Required steps to use the WYSIWYG plug-ins

The following sections list the steps required to use the Matrox WYSIWYG plug-ins for Adobe After Effects and Photoshop in order to preview video on your video monitor.

Adobe After Effects

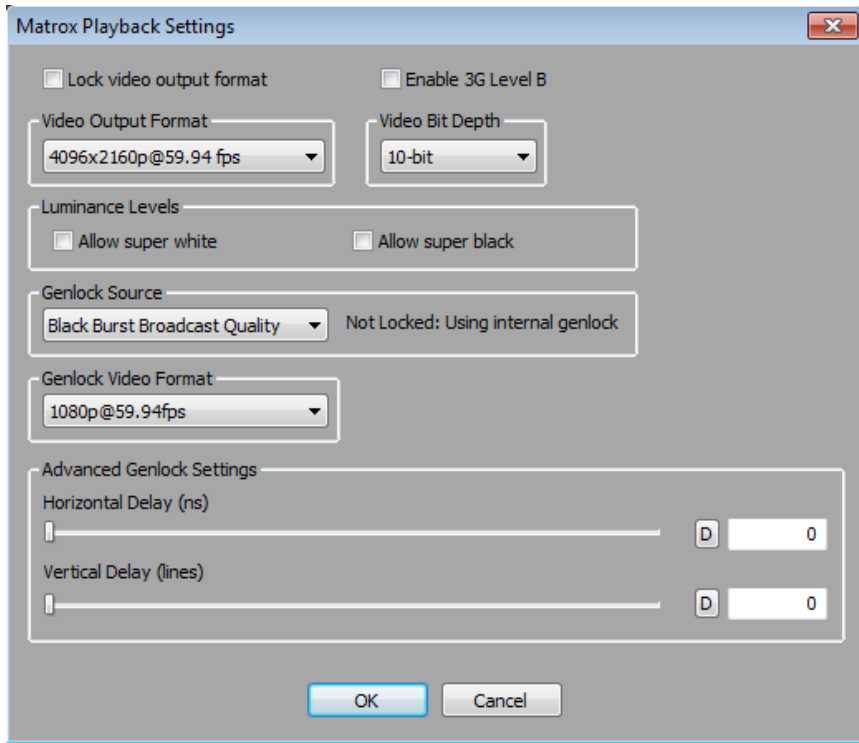
- 1 Start Adobe After Effects and import the footage you want to preview.
- 2 Drag the footage from the **Project** panel to the **Composition** panel.

Adobe Photoshop

- 1 Start Adobe Photoshop and open the file you want to preview.
- 2 Choose **File > Export > Matrox WYSIWYG Preview**.

Defining your playback settings

The **Matrox Playback Settings** dialog box provides various settings that you can use to configure your Matrox Mojito 4K video output and genlock settings.



- 1 If you're using Adobe Premiere Pro, you can select **Lock video output format** to ensure that the currently selected video output format won't change when working in your project. When this option is cleared, your sequence's video output may change to a different format when you open a title or graphic in the Source Monitor or use the Multi-Camera Monitor.



Important When **Lock video output format** is selected, you won't be able to change the video output format, and the currently selected format will be applied to **all** sequences in your project. Therefore, make sure that you've selected the video output format that you want (see step 3 below) before selecting this option. In order to specify a different video output format for each sequence in your project, the video output format must not be locked.

- 2 Select **Enable 3G Level B** if you want to output 3G Level B video when outputting 1080p, 2K, QFHD, or 4K video at 50 fps or 59.94 fps. Otherwise, 3G Level A video will be output for these formats.
- 3 Under **Video Output Format**, select the format that you want for your video output. For a list of the supported formats, see “[Supported video output formats](#)” on page 22.
- 4 Under **Video Bit Depth**, select either **8-bit** or **10-bit** to indicate the bit depth you want for your video output.
- 5 Under **Luminance Levels**, you can select any of the following options if required:
 - **Allow super white** Allows the highest luminance level of your video output to exceed the standard maximum white level.
 - **Allow super black** Allows the lowest luminance level of your video output to fall below the standard black level.



Note Super white and super black should not be allowed when producing your final video production for broadcast.

- 6 Under **Genlock Source**, select one of the following:
 - **Internal** Genlock to the Mojito 4K internal reference signal. Select this option only if you don’t have an external video sync source.
 - **Black Burst Broadcast Quality** Genlock to an external analog sync source connected to the reference input (REF IN) on Mojito 4K. This must be a stable sync source, such as an external sync generator (bi-level black burst for SD or tri-level sync for HD).



Note The status of your genlock source will be displayed, such as **Locked** or **Not Locked**, to indicate whether or not Mojito 4K is presently locked to your selected genlock source. When you change the genlock source, distorted video and silent audio will be output until Mojito 4K locks to the new genlock source.

- 7 Under **Genlock Video Format**, select your genlock source’s video format. If you can’t select a video format, make sure that your genlock source matches the specified video format. When the genlock source is set to **Internal**, the genlock video format is set to the currently selected video output format.
- 8 Under **Advanced Genlock Settings**, drag the **Horizontal Delay** and **Vertical Delay** sliders to adjust the horizontal and vertical timing of your video outputs with respect to your genlock source. This lets you compensate for cable delays within your system.
- 9 Click **OK** to save your settings.

Supported video output formats

The following table shows the video output formats that are supported on the Matrox Mojito 4K video outputs (same format on all outputs).

Video output format	Frame rate (fps)	Transport type
SD resolutions¹		
NTSC	29.97	1×SD-SDI
PAL	25	1×SD-SDI
HD resolutions¹		
720p	50 or 59.94	1×HD-SDI
1080i	25 or 29.97	1×HD-SDI
1080PsF	23.98, 25, or 29.97	1×HD-SDI
1080p	23.98, 25, or 29.97	1×HD-SDI
1080p 3G Level A	50 or 59.94	1×3G-SDI Level A
1080p 3G Level B	50 or 59.94	1×3G-SDI Level B
2K resolutions¹		
2048×1080PsF	23.98, 25, or 29.97	1×HD-SDI
2048×1080p	23.98, 25, or 29.97	1×HD-SDI
2048×1080p 3G Level A	50 or 59.94	1×3G-SDI Level A
2048×1080p 3G Level B	50 or 59.94	1×3G-SDI Level B
QFHD resolutions²		
3840×2160PsF	23.98, 25, or 29.97	4×HD-SDI
3840×2160p	23.98, 25, or 29.97	4×HD-SDI
3840×2160p 3G Level A	50 or 59.94	4×3G-SDI Level A
3840×2160p 3G Level B	50 or 59.94	4×3G-SDI Level B
4K resolutions²		
4096×2160PsF	23.98, 25, or 29.97	4×HD-SDI
4096×2160p	23.98, 25, or 29.97	4×HD-SDI
4096×2160p 3G Level A	50 or 59.94	4×3G-SDI Level A
4096×2160p 3G Level B	50 or 59.94	4×3G-SDI Level B

¹ When outputting to an SD, HD, or 2K resolution, the video and audio are duplicated on all outputs.

² When outputting to a QFHD or 4K resolution, the audio is output only on the first SDI output.


5

Monitoring Your Matrox Mojito 4K System

This chapter explains how to use the Matrox X.info program to display important details about your Matrox Mojito 4K system and installed Mojito 4K card.

Using X.info to display Mojito 4K information

The Matrox X.info program lets you display information about your Matrox Mojito 4K system and installed Mojito 4K card, and provides warnings when certain problems arise, such as when the temperature of your Mojito 4K card exceeds the maximum operating temperature.

Matrox X.info runs continuously to monitor your system, whenever your computer is turned on and the Mojito 4K card is installed. You can open Matrox X.info to display system and hardware details by double-clicking the  icon on your Windows taskbar.

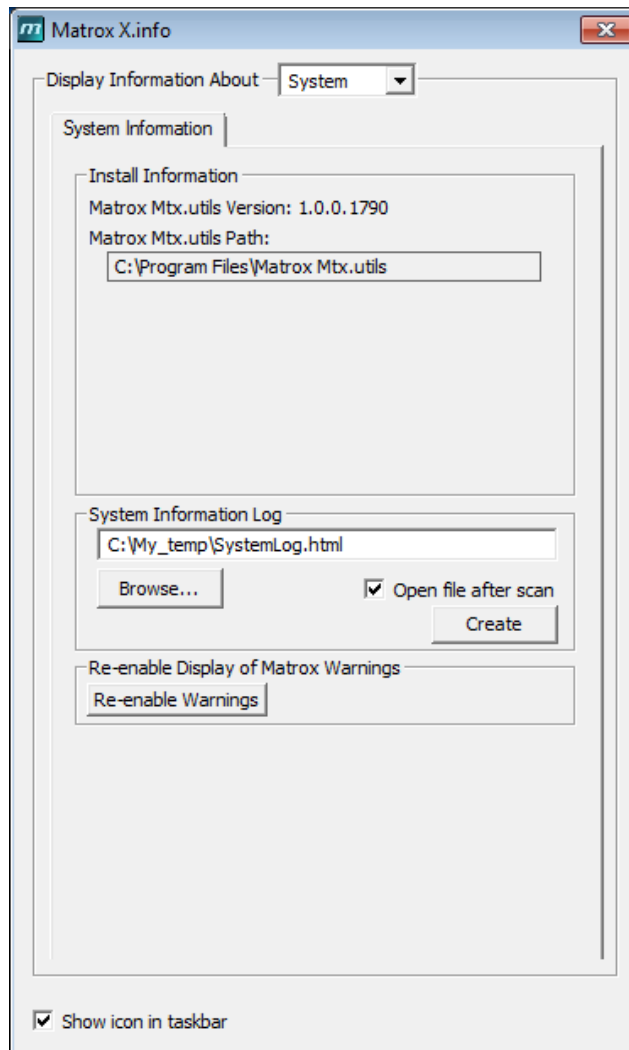


Note If you do not see the icon, check your taskbar properties and make sure that you're showing the icon for Matrox X.info.

Displaying system information

To display information about your Matrox Mojito 4K system, select **System** from the **Display Information About** list. On this page, you can see **Install Information**, such as the install path and version of Matrox Mtx.utils.

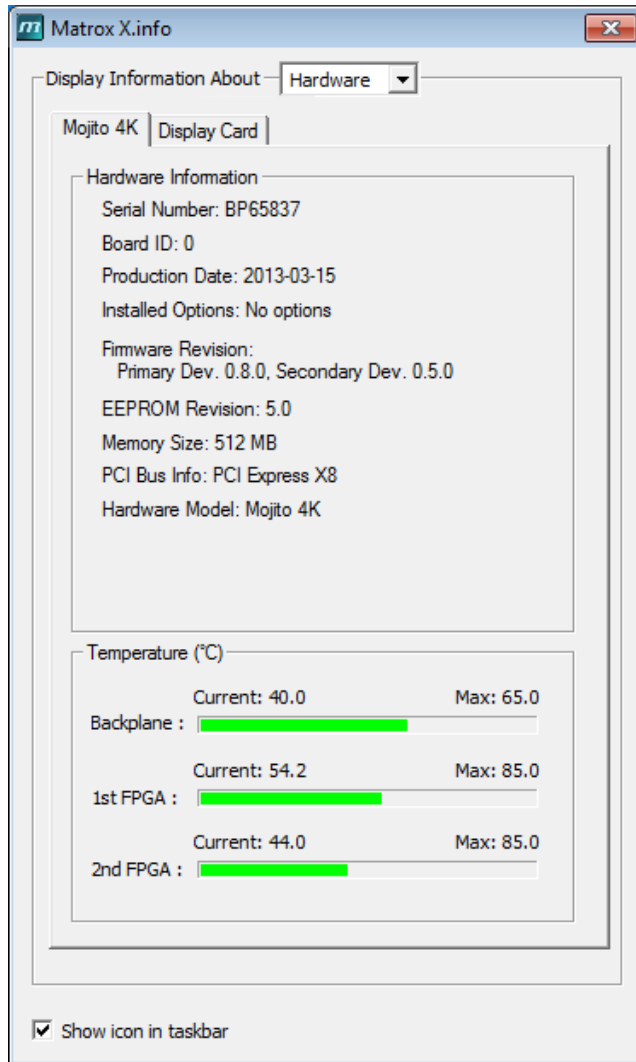
You can also create an HTML log file of your system information, which can be useful for troubleshooting. To create this log, use the **Browse** button under **System Information Log** to select the path and name of the log, then click **Create**. If **Open file after scan** is selected, the HTML system log opens after it is created.



If you had previously turned off certain Matrox warnings and want them to be re-enabled, click **Re-enable Warnings**. For example, some Matrox warnings provide an option to turn off the warning (that is, you can select **Don't display this message again**). Clicking **Re-enable Warnings** allows these warnings to be displayed again.

Displaying hardware information

To display information about your Matrox Mojito 4K card, select **Hardware** from the **Display Information About** list. This displays a page with hardware information (for example, serial number and production date). You can also monitor the current and maximum operating temperatures for your card



Important Whether or not you have opened Matrox X.info, if your Mojito 4K card exceeds the maximum operating temperature, you'll receive a warning message with further instructions as explained in [“Error notification”](#) on page 27.

Monitoring your Mojito 4K card's operating temperatures

As shown in the X.info **Hardware** section, the **Mojito 4K Card** page displays the current and maximum operating temperatures of your Mojito 4K card's hardware components. To avoid damage to your Mojito 4K card, make sure that you don't operate your card at or near the maximum temperature for a prolonged period of time. You should target your Mojito 4K card to operate at least 10°C below the maximum operating temperature.

You should monitor the temperature of your Mojito 4K card periodically and take measures as needed to lower the room temperature and/or improve the ventilation in your Mojito 4K system. If needed, move your Mojito 4K card to a PCIe slot in your computer that is not too close to another card that generates heat, such as a display card.

Error notification

X.info provides temperature warnings and warnings for other possible Mojito 4K card problems. Once X.info has detected a hardware problem, the **Matrox X.info Notification** dialog box will be displayed to give you details of the problem and further instructions. You will not be able to close this dialog box until the problem has been resolved.

Your notes

A

Matrox Mojito 4K Specifications

This appendix provides the Matrox Mojito 4K card specifications.

General

- **Video formats** NTSC, PAL, 720p, 1080i/p/PsF, 2K (2048×1080)p/PsF, QFHD (3840×2160)p/PsF, 4K (4096×2160)p/PsF
- **Regulatory compliance**
 - FCC Class A, CE Mark Class A, and ACMA Class A
 - RoHS Directive 2002/95/EC
- **Matrox Mojito 4K card**
 - Three-quarter length PCIe (x8) card
 - PCB dimensions:
 - L 23.2 cm (9.125 in) × W 10.7 cm (4.2 in)
 - Overall thickness including components: 1.9 cm (0.75 in)
- **Typical operating voltages and current consumption**

Voltage	+3.3 V	+12 V
Current	3.0 A	1.3 A

Total power consumption: 23 watts

Connections

- **SDI video outputs**
 - Four simultaneous SDI outputs: SD, HD (includes 2K), and 3G Level A or B
 - Compliant with SMPTE 259M, SMPTE 292M, SMPTE 424M, and SMPTE 425M-AB
 - One QFHD (3840×2160 up to 59.94 fps) or 4K (4096×2160 up to 59.94 fps) on four SDI outputs, 4:2:2 10-bit (3G Level A or B)
 - BNC connector (75 Ω), terminated
 - Equalized output for maximum cable length
- **Embedded audio outputs**
 - Up to 16 channels of embedded audio are supported for SD, HD, and QFHD resolutions
 - Up to eight channels of embedded audio are supported for 2K and 4K resolutions
 - In accordance with SMPTE 272M A, B, and C (SD), and SMPTE 299M (HD)
 - 48 kHz sampling rate
 - 24-bit audio streams are supported

- **Genlock reference input**
 - HD analog tri-level sync or SD analog bi-level black burst
 - BNC connector (75 Ω), terminated

Environmental specifications

- Minimum/maximum room operating temperature¹: 0° to 55° C (32° to 131° F)
- Minimum/maximum storage temperature: -40° to 75° C (-40° to 167° F)
- Maximum altitude for operation: 3,000 meters
- Maximum altitude for transport: 12,000 meters
- Operating humidity: 20% to 80% relative humidity (non-condensing)
- Storage humidity: 5% to 95% relative humidity (non-condensing)

¹ This temperature range assumes that the hardware components on the card don't exceed the maximum operating temperature as explained in [“Monitoring your Mojito 4K card's operating temperatures”](#) on page 27.

Your notes

B

Matrox Customer Support

This appendix explains how you can register your Matrox product and obtain customer support.

How to get Matrox customer support

If you have a problem that you're unable to solve by referring to the documentation for your Matrox product, please contact your Matrox representative. He or she should be able to help you quickly correct any installation or system configuration problem.

If your representative is unable to solve your problem, contact Matrox for further information and assistance.

Registration

You can register your Matrox product in the Matrox Support section of our website at www.matrox.com/video/support.

Only registered users are entitled to customer support, software updates, special promotional offers, and access to our user forum.

Keep up to date with our website

In addition to registering your Matrox product, our website offers you up-to-the-minute information about Matrox products and software updates. Be sure to place our site in your favorites or bookmarks:

www.matrox.com/video/support.

Contacting us

Matrox is proud to offer worldwide customer support. Please use the contact information for your Matrox product and area as provided on our website at www.matrox.com/video/support.

Numerics

3G Level B output, enabling [21](#)

A

Adobe After Effects WYSIWYG plug-in
about [19](#)
required steps [19](#)

See also Matrox WYSIWYG plug-ins

Adobe Encore, enabling output on Mojito 4K [17](#)

Adobe Photoshop WYSIWYG plug-in
about [19](#)
required steps [20](#)

See also Matrox WYSIWYG plug-ins

Adobe Prelude, enabling output on Mojito 4K [17](#)

Adobe Premiere Pro
enabling output on Mojito 4K [16](#)
locking video output format [20](#)
selecting Matrox sequence preset [16](#)
using with Mojito 4K [16](#)

Adobe SpeedGrade, enabling output on Mojito 4K [18](#)

After Effects WYSIWYG plug-in

See Adobe After Effects WYSIWYG plug-in

B

Bit depth, selecting for video output [21](#)

C

Connections
available on Mojito 4K [12](#)
video output mapping [13](#)

Customer support [34](#)

D

Documentation, style conventions [3](#)

E

Encore

See Adobe Encore

Error notification, with X.info [27](#)

F

Firmware, updating for Mojito 4K [8](#)

G

Genlock
selecting source [21](#)
selecting video format [21](#)
termination switch [7](#)

H

Hardware, Mojito 4K
before you install [6](#)
displaying information for [26](#)
safety precautions [6](#)
specifications [30](#)
warranty [i](#)

Horizontal delay, adjusting [21](#)

I

Installing
Mojito 4K card [7](#)
Mojito 4K software [8](#)
Internet site, Matrox [34](#)

L

Luminance levels, selecting for video output [21](#)

M

Matrox
contacting us [34](#)
WWW site [34](#)

Matrox Mojito 4K
about [2](#)
available connections [12](#)
before you install [6](#)
genlock termination switch [7](#)
hardware specifications [30](#)
installation safety precautions [6](#)
installing card [7](#)
installing software [8](#)
monitoring operating temperature [27](#)
supported video output formats [22](#)
system requirements [2](#)
video output mapping [13](#)

Matrox playback settings, defining [20](#)

Matrox Player

setting in Adobe Encore [17](#)

setting in Adobe Prelude [17](#)

setting in Adobe Premiere Pro [16](#)

setting in Adobe SpeedGrade [18](#)

Matrox WYSIWYG Control Panel, using [19](#)

Matrox WYSIWYG plug-ins

about [19](#)

installing [8](#)

re-installing [8](#)

removing [8](#)

required steps [19](#)

Matrox X.info

about [24](#)

error notification [27](#)

hardware information [26](#)

monitoring temperatures [27](#)

system information [24](#)

Mojito 4K

See Matrox Mojito 4K

Monitoring your system [24](#)

P

Photoshop WYSIWYG plug-in

See Adobe Photoshop WYSIWYG plug-in

Playback settings

See Matrox playback settings

Prelude

See Adobe Prelude

Premiere Pro

See Adobe Premiere Pro

R

Registering your Matrox product [34](#)

S

Software, Mojito 4K

installing [8](#)

removing [9](#)

Specifications, Mojito 4K card [30](#)

SpeedGrade

See Adobe SpeedGrade

Super black, allowing for video output [21](#)

Super white, allowing for video output [21](#)

System information, displaying with X.info [24](#)

System requirements [2](#)

T

Technical support [34](#)

Temperature monitoring for Mojito 4K [27](#)

V

Vertical delay, adjusting [21](#)

Video formats

supported on Mojito 4K outputs [22](#)

Video output

locking format in Premiere Pro [20](#)

selecting bit depth [21](#)

selecting format [21](#)

selecting luminance levels [21](#)

supported formats [22](#)

W

Warnings

displayed for hardware issues by X.info [27](#)

re-enabling using X.info [25](#)

Warranty [i](#)

WWW site, Matrox [34](#)

WYSIWYG Control Panel

See Matrox WYSIWYG Control Panel

WYSIWYG plug-ins

See Matrox WYSIWYG plug-ins

X

X.info

See Matrox X.info

Compliance Statements

USA

FCC Compliance Statement

Remark for the Matrox hardware products supported by this guide

This equipment has been tested and found to comply with the limits for a Class A digital device, pursuant to Part 15 of the FCC Rules. These limits are designed to provide reasonable protection against harmful interference when the equipment is operated in a commercial environment. This equipment generates, uses, and can radiate radio frequency energy and, if not installed and used in accordance with the instructions manual, may cause harmful interference to radio communications. Operation of this equipment in a residential area is likely to cause harmful interference in which case the user will be required to correct the interference at his own expense.

WARNING

Changes or modifications to this unit not expressly approved by the party responsible for the compliance could void the user's authority to operate this equipment. The use of shielded cables for connection of the equipment and other peripherals is required to meet FCC requirements.

Canada

(English) Industry Canada Compliance Statement

CAN ICES-3 (A)/NMB-3 (A)

Remark for the Matrox hardware products supported by this guide

These digital devices do not exceed the Class A limits for radio noise emission from digital devices set out in the Radio Interference Regulation of Industry Canada.

(Français) Conformité avec les exigences de l'Industrie Canada

CAN ICES-3 (A)/NMB-3 (A)

Remarque sur les produits matériels Matrox couverts par ce guide

Ces appareils numériques n'émettent aucun bruit radioélectrique dépassant les limites applicables aux appareils numériques de Classe A prescrites dans le Règlement sur le brouillage radioélectrique édicté par Industrie Canada.

Europe

(English) European user's information – Declaration of Conformity

Remark for the Matrox hardware products supported by this guide

These devices comply with EC Directive 2006/95/EC for a Class A digital device. They have been tested and found to comply with EN55022/CISPR22 and EN55024/CISPR24. In a domestic environment these products may cause radio interference in which case the user may be required to take adequate measures. To meet EC requirements, shielded cables must be used to connect the equipment and other peripherals. These products have been tested in a typical Class A compliant host system. It is assumed that these products will also achieve compliance in any Class A compliant system.



(Français) Informations aux utilisateurs Européens – Déclaration de conformité

Remarque sur les produits matériels Matrox couverts par ce guide

Ces unités sont conformes à la directive communautaire 2006/95/EC pour les unités numériques de classe A. Les tests effectués ont prouvé qu'elles sont conformes aux normes EN55022/CISPR22 et EN55024/CISPR24. Le fonctionnement de ces produits dans un environnement résidentiel peut causer des interférences radio, dans ce cas l'utilisateur peut être amené à prendre les mesures appropriées. Pour respecter les impératifs communautaires, les câbles de connexion entre l'équipement et ses périphériques doivent être blindés. Ces produits ont été testés dans un système hôte typique compatible classe A. On suppose qu'ils présenteront la même compatibilité dans tout système compatible classe A.

(Deutsch) Information für europäische Anwender – Konformitätserklärung

Anmerkung für die Matrox Hardware-Produktunterstützung durch dieses Handbuch

Diese Geräte entsprechen EG Richtlinie 2006/95/EC für ein digitales Gerät Klasse A. Sie wurden getestet und entsprechen demnach EN55022/CISPR22 und EN55024/CISPR24. In einer Wohnumgebung können diese Produkte Funkinterferenzen erzeugen, und der Benutzer kann genötigt sein, entsprechende Maßnahmen zu ergreifen. Um EG-Anforderungen zu entsprechen, müssen zum Anschließen des ausrüstung und anderer Peripheriegeräte abgeschirmte Kabel verwendet werden. Diese Produkt wurden in einem typischen, der Klasse A entsprechenden, Host-System getestet. Es wird davon ausgegangen, daß diese Produkte auch in jedem Klasse A entsprechenden System entsprechend funktionieren.

(Italiano) Informazioni per gli utenti europei – Dichiarazione di conformità

Nota per i prodotti hardware Matrox supportati da questa guida

Questi dispositivi sono conformi alla direttiva CEE 2006/95/EC relativamente ai dispositivi digitali di Classe A. Sono stati provati e sono risultati conformi alle norme EN55022/CISPR22 e EN55024/CISPR24. In un ambiente domestico, questi prodotti possono causare radiointerferenze, nel qual caso all'utente potrebbe venire richiesto di prendere le misure adeguate. Per soddisfare i requisiti CEE, l'apparecchiatura e le altre periferiche vanno collegati con cavi schermati. Questi prodotti sono stati provati in un tipico sistema host conforme alla Classe A. Inoltre, si dà per scontato che questi prodotti acquisiranno la conformità in qualsiasi sistema conforme alla Classe A.

(Español) Información para usuarios europeos – Declaración de conformidad

Observación referente a los productos de hardware de Matrox apoyados por este manual

Estos dispositivos cumplen con la directiva de la CE 2006/95/EC para dispositivos digitales de Clase A. Dichos dispositivos han sido sometidos a prueba y se ha comprobado que cumplen con las normas EN55022/CISPR22 y EN55024/CISPR24. En entornos residenciales, estos productos pueden causar interferencias en las comunicaciones por radio; en tal caso el usuario deberá adoptar las medidas adecuadas. Para satisfacer las disposiciones de la CE, deberán utilizarse cables apantallados para conectar el equipo y demás periféricos. Estos productos han sido sometidos a prueba en un típico sistema anfitrión que responde a los requisitos de la Clase A. Se supone que estos productos cumplirán también con las normas en cualquier sistema que responda a los requisitos de la Clase A.



www.matrox.com/video