

USHA

UPS SNMP HTTP AGENT

User Guide

UPS SNMP HTTP AGENT

AT, IBM are registered trademarks of International Business Machines Corporation.

NetWare are registered trademarks of Novell, Incorporated.

DOS, Windows 95, 98, Me, Windows NT, 2000, XP, 2003 are registered trademarks of Microsoft Corporation.

All other trademarks belong to their respective proprietors.

Electronic Emission Notice

Federal Communications Commission (FCC)

This equipment has been tested and found to comply with the limits for a Class B digital device, pursuant to Part 15 of the FCC Rules. These limits are designed to provide reasonable protection against harmful interference when the equipment is operated in a commercial environment.

CE Notice

This device complies with the EMC directive of the European Community and meets or exceeds the following technical standard:

- EN 55022:1998 —"Limits and Methods of Measurement of Radio interference Characteristics of information Technology Equipment." This device complies with the CISPR Class B standard
- EN 55024:1998 —"Electromagnetic compatibility— Generic immunity standard Part1: Residential, and light industry."

Safety Information

For USHA Pro II and mini USHA

- All the service of this equipment must be performed by qualified service personnel. Remove rings, watches and other jewelry before servicing the unit
- Before plug in/pull out the USHA Pro II or mini USHA to/from the UPS, please make sure that the power of the UPS must be off. Hot swap of the USHA Pro II or mini USHA in UPS is inhibited.

For USHA ProE II

- To reduce the risk of fire or electric shock, install the unit in a temperature-controlled indoor area free of conductive contaminants. Do not place the unit near liquids or in an excessively humid environment.
- Do not allow liquids or foreign objects to enter the unit
- The unit does not contain any user-serviceable parts. Do not open the unit.
- All the service of this equipment must be performed by qualified service personnel. Remove rings, watches and other jewelry before servicing the unit.
- Before maintenance, repair or shipment, the unit must be completely switched off and unplugged and all connections must be removed.
- Before plug in the power adapter of USHA ProE II, please make sure the rating of power source that is matched with the rating of power adapter of USHA ProE II.

Table of Contents

Electronic Emission Notice	2
Safety Information	2
Table of Contents	3
Chapter 1 Welcome	5
Introduction administration	5
USHA Resources	6
USHA Package Contents	6
Features	7
System Application	8
Chapter 2 Connect USHA to the Network	9
What you need	9
Hardware Installation	9
USHA Configuration through the Serial Port	11
USHA Configuration through TELNET command	22
USHA Configuration through a Web Browser	22
USHA Initial Configuration	25
Chapter 3 Managing USHA/UPS via Web Browser	27
Utilising the USHA Home Page	27
UPS Monitoring	27
UPS Management	31
USHA Management	36
UPS History	45
Language Selection	47
Extra Browsing Options-PDA & WAP	48
Chapter 4 Monitoring USHA/UPS via Java Monitor	50
Java Monitor	50
UPS History Log Monitor	52
UPS Extended History Log Monitor	53
Chapter 5 Managing USHA/UPS via SNMP	54
Setting SNMP parameters in USHA	54
SNMP Access Control Setting	54
SNMP Trap Receivers Setting	54
Set up SNMP Manager Software	54
Chapter 6 Shutdown Software	55
Install Shutdown Software in Windows 9x/NT/ 2000/XP/2003	55
Install Shutdown Software in SCO OpenServer UNIX	58
Install Shutdown Software in Linux kernel 2.0.x	61
Install Shutdown Client in Novell Netware	62
Install Shutdown Software in Solaris	66
Chapter 7 UPS Power Management	69
Turn off UPS Manually	69
Set UPS To Sleep Mode Manually	70
UPS Shutdown during Power Crisis	71
Managing the UPS Shutdown Schedule	72
Appendix A Technical Information	73
Technical Information about USHA Pro II	73
Technical Information about USHA ProE	76
Technical Information about mini USHA	79
Appendix B Firmware Upgrades	82
General information	82

UPS SNMP HTTP AGENT

Updating USHA Firmware from Windows 9x/Me/NT 4.0/2000/XP/2003 _____ 82
Updating USHA Firmware from UNIX _____ 83
Appendix C HTTP Security Control _____ **84**

Chapter 1 Welcome

Introduction administration

USHA – acronym for **UPS SNMP** and **HTTP Agent**. It can get hold of the status from and issue commands to the UPS. User can use SNMP managers or Web browsers to manage the UPS through an Ethernet.

USHA also provides shutdown programs for different operating systems. It issues a shutdown command in the event such as mains failure, UPS battery low condition, UPS overload, UPS over temperature and scheduled shutdown. All shutdown events are configurable by user. The shutdown software will proceed to the automatic orderly shutdown to prevent the abnormal shut-off of the clients or servers.

There are three types of USHA:

USHA Pro II – Internal card version with 10/100 auto-sense fast Ethernet.

USHA ProE II – External box version with 10/100 auto-sense fast Ethernet.

The internal card version (USHA Pro II) is designed for UPS models, which have the extension board slot where USHA can be inserted and connected to the UPS through the golden fingers as in Figure 1-1. The external box version (USHA ProE II) is designed for UPS models that are not equipped with the extension board slot; connection between USHA and the RS-232 communication port of UPS is through a serial cable as shown in Figure 1-2.

mini USHA – Internal card version with 10/100 auto-sense fast Ethernet.



**Figure 1-1 USHA Pro II &
mini USHA Version**



Figure 1-2 USHA ProE II Versions

USHA Resources

The USHA CD-ROM contains Quick Installation Guide, User Guide, MIB files and USHA Shutdown Software for various OS that you can use to configure the USHA.

1. USHA Quick Installation Guide gives detail on how to install and configure a USHA using a Windows OS workstation.
2. USHA User Guide gives more detail and information on installation and configuration of USHA.
3. USHA provides online help that gives additional instructions for administering a USHA.

USHA Package Contents

For USHA Pro II:

1. USHA Pro II card with mounting bracket
2. RJ45 to DB9 Female serial cable for USHA console operation
3. USHA CD-ROM containing the Shutdown Software for various OS, provided USHA MIB file for SNMP Network Management System (NMS), USHA Quick Installation Guide, USHA User Guide in electronic format

For USHA ProE II:

1. USHA ProE II box
2. RJ45 to DB9 Female serial cable for USHA console operation
3. RJ45 to DB9 Male cable for connect to UPS RS-232 communication port
4. 12V DV Power adapter
5. USHA CD-ROM containing the Shutdown Software for various OS, provided USHA MIB file for SNMP Network Management System (NMS), USHA Quick Installation Guide, USHA User Guide in electronic format

For mini USHA:

1. mini USHA card with mounting bracket
2. RJ45 to DB9 Female serial cable for USHA console operation
3. USHA CD-ROM containing the Shutdown Software for various OS, provided USHA MIB file for SNMP Network Management System (NMS), USHA Quick Installation Guide, USHA User Guide in electronic format

Features

- **Network connection through RJ45 connector**

Allows connection of the UPS directly to the network through a RJ45 connector without using RS232 ports on the computer and without loading any individual UPS management software on the network server.

- **Network UPS management**

Allows remote management of the UPS from any workstation through Internet or Intranet.

- **Remote UPS monitoring via SNMP, HTTP and JAVA applets**

Allows monitoring of the UPS using USHA MIB (Management Information Base) - provided with USHA, Internet Browser or Java monitoring applets.

- **Configure UPS and USHA functions from any client (password protected)**

Set UPS and USHA parameters from any SNMP management station or through Internet Browsers using HTTP forms and objects.

- **Monitor power quality via Java Applets**

Provides visual indication on screen through dynamic graphics.

- **Keep event logs & metering data in flash memory**

Provides a history file of UPS power events, power quality, UPS status and battery condition.

- **Automatic shutdown**

The shutdown software included provides automatic orderly shutdown either pre-programmed by Administrator or when critical power events.

- **Multiple server shutdown**

The shutdown program will broadcast mains failure messages via an IP (Internet Protocol) packet and perform automatic shutdown on several servers operating with different operating systems.

... also

- **Notification of system administrator via SNMP Traps, Java applets**

- **RTC supported**

- **Shutdown Watchdog enabled**

- **Telnet support for configuration**

- **BOOTP/DHCP supported**

- **GUI for homepages and Java applets**

- **Online configuration supported**

- **Standard UPS MIB (RFC1628) supported**

- **Enhanced HTTP security**

- **No restart needed for IP change**

- **System parameters/log write to flash memory simultaneously**

- **SSH and SSL supported**

- **WOL function supported**

- **Can connect an EMD (Environmental Monitoring Device) to detect the temperature and humidity.**

System Application

USHA is an interface between UPS and the network. It can obtain the status from a UPS and issue commands to it. USHA supports two kinds of protocol – SNMP and HTTP for user access. Through the SNMP NMS and Web Browser, user can obtain the UPS status, issue commands to UPS and setting up USHA through the network.

USHA also provides shutdown software for various OS. The shutdown software that runs under various O.S. can link to USHA automatically through the network and communicate with USHA via a proprietary protocol. USHA will issue the shutdown command to shutdown software in the event of AC failure, battery low and scheduled shutdown. Shutdown software will then proceed to the shutdown process in order to prevent the abnormal shutoff of host or server due to power events.

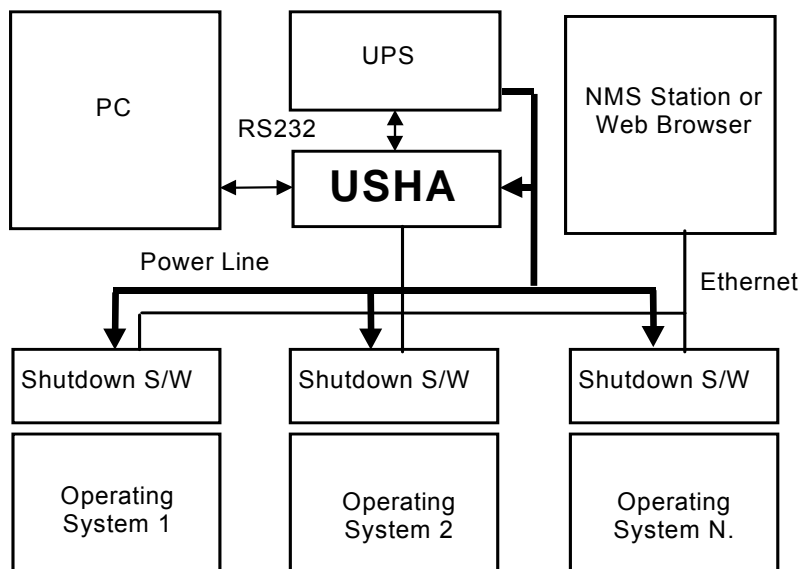


Figure 1-3 USHA System Application Diagram

Chapter 2 Connect USHA to the Network

What you need

To install USHA on a network and change its default configuration, you need a workstation running Microsoft Windows (9x, Me, NT4.0, 2000, XP or later). If your network dynamically configures IP address, all you need is a workstation with a Web Browser.

There are two methods for setting the USHA configuration:

1. Set up the USHA through the serial port
2. Set up the USHA via a Web Browser

Hardware Installation

If you are using USHA Pro II or mini USHA, refer to the section “Hardware preparation of USHA Pro II & mini USHA” or, if using USHA ProE II, refer to the section “Hardware preparation of USHA ProE II”.

Hardware Installation of USHA Pro II & mini USHA

1. Fasten the USHA Pro II or mini USHA to USHA bracket.
2. Insert the USHA Pro II or mini USAH into the UPS slot.
(As Figure 4. See also the manual of the specific UPS for correct UPS slot installation; the procedure for Installing UPS slot interface may differ from one model of UPS to the next.)
3. Lock the screws of the USHA Pro II or mini USHA bracket.

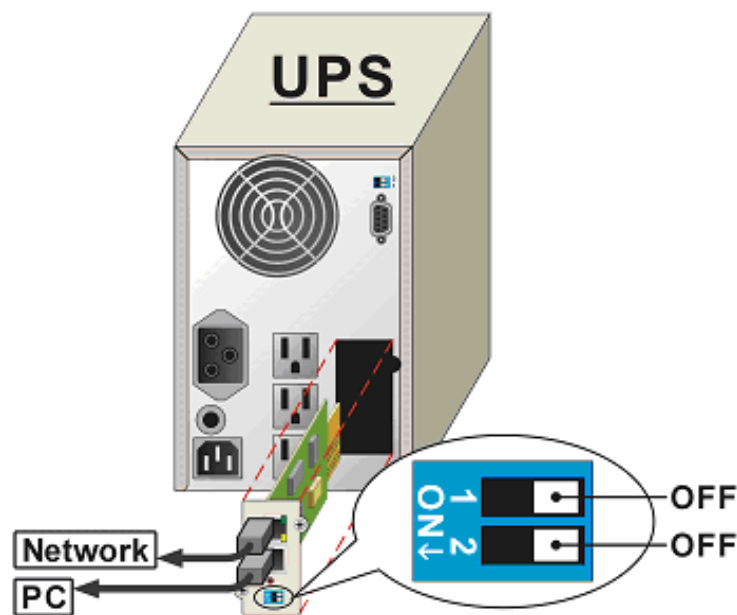


Figure 2-1 USHA Pro II (mini USHA) and UPS connection

Hardware Installation of USHA ProE II

1. Use the RJ45 to DB9 Male serial cable that provided from package to connect the UPS port on the USHA ProE II to the RS232 port of the UPS.
2. Plug the power adapter of the USHA ProE II into the power socket on the UPS. (USHA ProE II must use UPS power; otherwise USHA can't work while power was failed.)
3. Insert the power connector in the USHA ProE II power inlet.

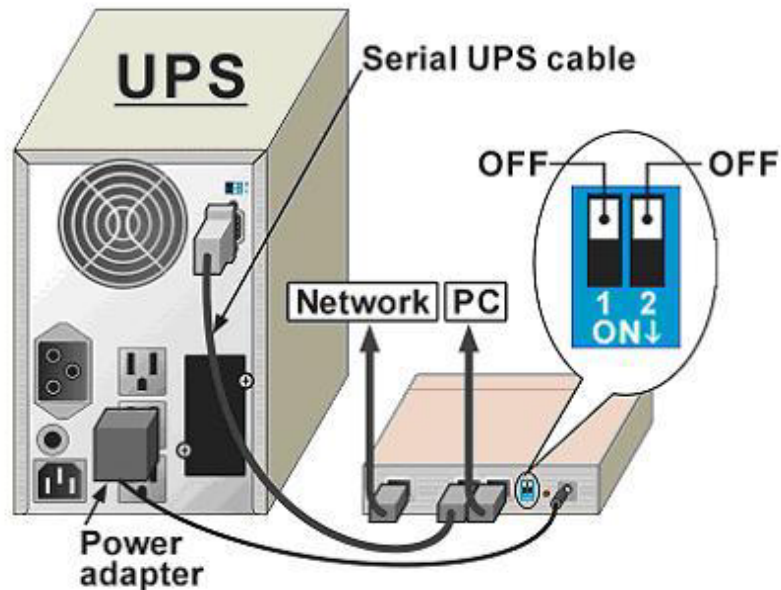


Figure 2-2 USHA ProE II and UPS connection

Please refer to the next section for serial port configuration, or go to the last section of this chapter for configuration through a Web Browser.

USHA Configuration through the Serial Port

If you are using USHA Pro II or mini USHA, refer to the section “Hardware preparation of USHA Pro II & mini USHA” or, if using USHA ProE II, refer to the section “Hardware preparation of USHA ProE II”.

Hardware Preparation of USHA Pro II & mini USHA

1. Procure a workstation (Microsoft Windows 9x, Me, NT4.0, 2000, XP, 2003 or later installed).
2. Use the RJ45 to DB9 female serial cable that provided from package connect between the USHA COM port and the COM port on the workstation. (See Figure 2-3)
3. Set both the DIP-switches of the USHA Pro II or mini USHA to OFF position (operating mode) for configuration.



Figure 2-3 Serial cable connection of USHA Pro II (mini USHA)

Hardware Preparation of USHA ProE II

1. Procure a workstation (Microsoft Windows 9x, Me, NT4.0, 2000, XP or later, installed).
2. Use the RJ45 to DB9 female serial cable that provided from package connect between the USHA COM port and the COM port on the workstation.. (See 2-4)
3. Set both the DIP-switches of the USHA ProE II to OFF position (operating mode) for configuration.



Figure 2-4 Serial cable connection of USHA ProE II

Configuring the USHA (Pro II, ProE II and mini USHA Version)

1. From a workstation running Microsoft Windows (9x, Me, NT4.0, 2000, XP, 2003 or later,), and click on the *HyperTerminal* icon of the accessory programs group. (See 2-5)

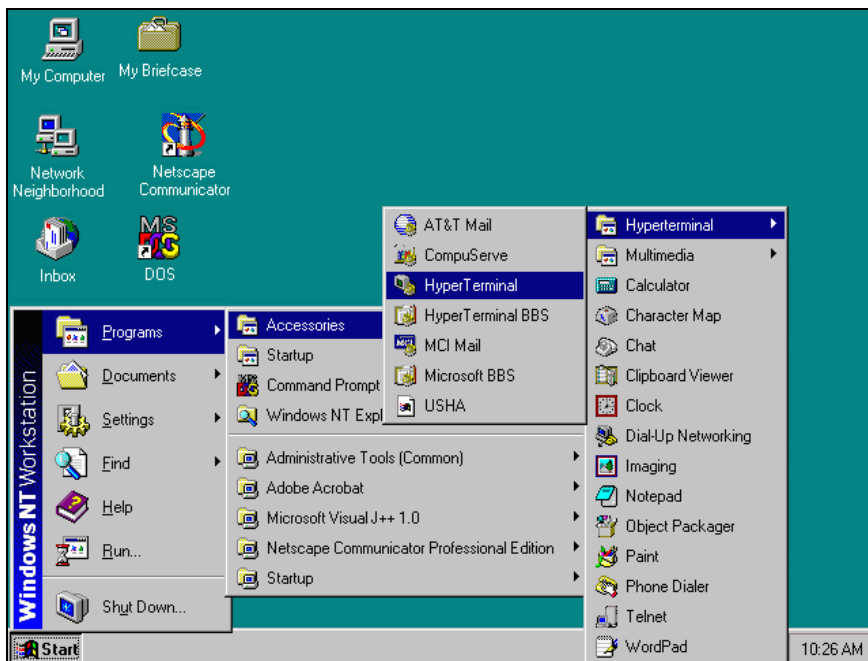


Figure 2-5 Hyper Terminal folders in the accessory programs group.

UPS SNMP HTTP AGENT

2. Enter a name and choose an icon for the connection. (See 2-6)

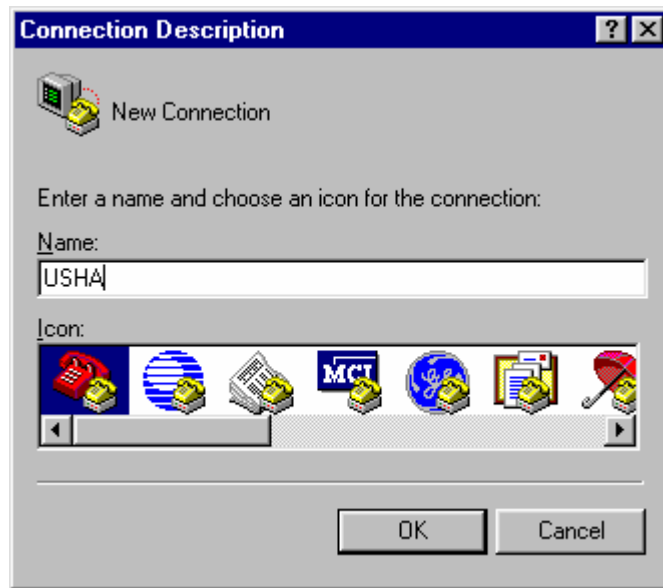


Figure 2-6 New Hyper Terminal connection.

3. Select direct COM port connection. (See 2-7.)



Figure 2-7 Select Direct to COM port connection.

UPS SNMP HTTP AGENT

4. Setup the COM port parameters - 9600 bps, 8 data bits, no parity, 1 stop bit and no flow control. (See 2-8.)

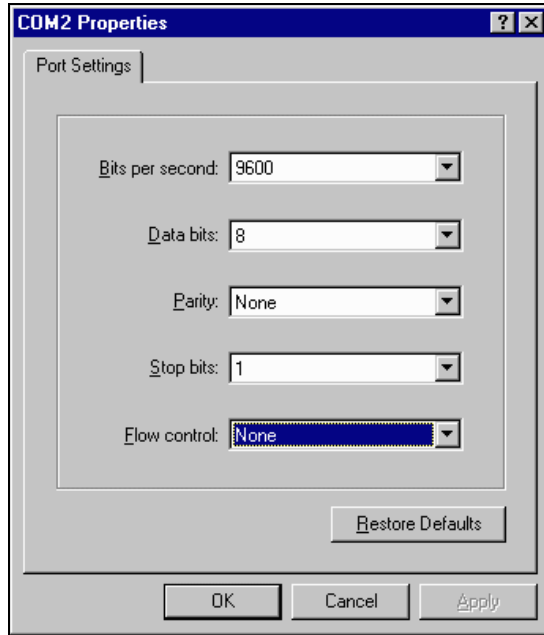


Figure 2-8 Setup of the COM port parameters.

5. If you are using USHA Pro II or mini USHA, power on the UPS or, if you are using USHA ProE II, press the reset button at the back of the unit. Wait for USHA to boot up. Messages will then be displayed on the screen (See 2-9); afterwards, key in the password (default password is **admin**). The USHA configuration utility main menu will be displayed on the screen.

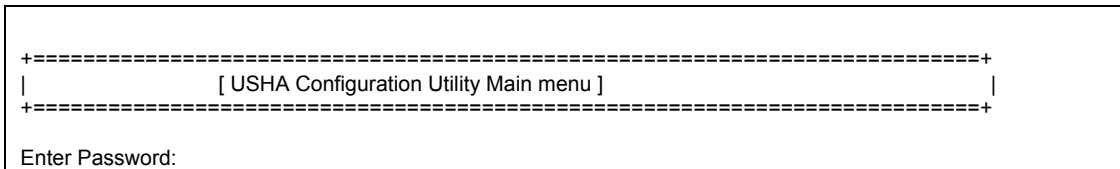


Figure 2-9 USHA Configuration menu.

6. Select “1” to enter the USHA Configuration screen (2-10).

```

+-----+
| [ USHA Configuration Utility Main menu ] |
+-----+
1. USHA Configuration
2. UPS Parameters
3. Access Control Table
4. Trap Receiver Table
5. Reset Configuration To Default
6. Restart Agent
6. Exit

Please Enter Your Choice => 1

+-----+
| [ USHA Configuration Utility Main menu ] |
+-----+
1. System Group
2. Control Group
3. Parameter Group
4. Email Group
0. Return to previous menu

Please Enter Your Choice =>
    
```

Figure 2-10 USHA Configuration menu.

Setting the IP Address, Gateway Address, Network Mask and Date/Time

From the configuration menu, press “1” to select this function and set the IP address, Gateway address and other group parameters. The definitions of these parameters are listed below (Figure 2-11).

```

+-----+
| [ System Group Configuration Menu ] |
+-----+
SNMP Agent Version      : USHA v300 (SN 1203927005)
Ethernet Address        : 00 E0 D8 0C 09 5F
1. IP Address           : 192.168.1.100
2. Gateway Address      : 192.168.1.254
3. Network Mask         : 255.255.255.0
4. Date and Time
0. Return to previous menu

Please Enter Your Choice => 4

+-----+
| [ Date and Time Menu ] |
+-----+
1. System Date (dd/mm/yyyy) : 07/06/2005
2. System Time (hh:mm:ss)   : 17:16:00
3. NTP server                : 133.31.180.6
4. NTP Time Zone             : +08:00
5. Daylight Saving Time Control : Enabled
6. NTP Control                : Enabled
0. Return to previous menu

Please Enter Your Choice =>
    
```

Figure 2-11 Setting the USHA local network addressing parameters, date and time.

UPS SNMP HTTP AGENT

No.	Function	Description	Example/Remark
1.	IP Address	The USHA IP address.	192.168.1.100
2.	Gateway Address	The network default gateway.	192.168.1.254
3.	Network Mask	The sub-net mask setting.	255.255.255.0
4.	Date and Time	Setting Date and Time in this group	

No.	Function	Description	Example/Remark
1.	System Date	USHA internal Date (dd/mm/yyyy)	06/07/2005
2.	System Time	USHA internal Time (hh:mm:ss)	17:16:00
3.	NTP Server	Setting NTP time server	133.31.180.6
4.	NTP Time Zone	Setting NTP time Zone as +/-hh:mm	+08:00
5.	Daylight Saving Time Control	Enable/disable daylight saving time	Enabled
6.	NTP Control	Enable/disable NTP time server	Enabled

After completing these settings, press “0” to return to the configuration menu.

Control Group Setting

From the configuration menu, press “2” to modify the access password and enabled/disabled status of the available network protocols (Figure 2-12). See **Appendix C** HTTP Security Control for detail.

[Control Group Configuration Menu]	
1.	HTTP Login Username : USHA
2.	Community Read-Only : public
3.	Community Read/Write : *
4.	BOOTP/DHCP Control : Enabled
5.	TFTP Upgrade Control : Enabled
6.	PING Echo Control : Enabled
7.	Telnet Control
8.	HTTP Control
9.	SNMP Control
0.	Return to previous menu

Please Enter Your Choice =>

Figure 2-12 Setting the passwords and enabling the network protocols

No.	Function	Description	Example/Remark
1.	HTTP Login Name	HTTP access login string	“USHA”
2.	Community Read-Only	General password for read-only access	“public”
3.	Community Read/Write	Administrator password for read and write access	“admin”
4.	BOOTP/DHCP Control	Enable/disable the BOOTP/DHCP protocols	Enabled
5.	TFTP Upgrade Control	Enable/disable the TFTP protocol for firmware upgrades through the local network	Enabled
6.	PING Echo Control	Enable/disable the PING echo	Enabled
7.	Telnet Control	Enable/disable the TELNET protocol and change port number	Enabled
8.	HTTP Control	Enable login and password request for HTTP access. Could change HTTP port number	Disabled
9.	SNMP Control	Enable/disable the SNMP service or change UDP port number	Enabled

After completing these settings, press “0” to return to the configuration menu.

Parameter Group Setting

From the configuration menu press “3” to modify the SNMP identification information. (Figure 2-13)

```

+=====+
| [ Parameter Group Configuration Menu ] |
+=====+
1. sysContact           : Technical Support Team
2. sysName              : UPS Agent
3. System Location     : Technical Support Lab.
4. EMD Configuration   : Disabled
5. Temperature Unit    : Celsius
6. Default Language    : Auto
0. Return to previous menu

Please Enter Your Choice =>
    
```

Figure 2-13 Setting the SNMP identification information and the UPS data read frequency.

No	Function	Description	Example/Remark
1.	SysContact	Alphanumeric string	Technical Support Team
2.	SysName	Alphanumeric string	UPS Agent
3.	SystemLocation	Alphanumeric string	Technical Support Lab.
4.	EMD Configuration	Enable/disable EMD function	Disable
5.	Temperature Unit	Change temperature Unit to Celsius or Fahrenheit	Celsius
6.	Default Language	Display USHA homepage main menu consistent with the language pre-set in the Web Browser	Auto

After completing these settings, press “0” to return to the configuration menu.

Email Group Setting

From the configuration menu, press “4” to modify the Email configuration. (Figure 2-14)

```

+=====+
| [ Email Group Configuration Menu ] |
+=====+
1. Mail Server           : yahoo.com.tw
2. User Account          : AAA
3. User Password         : *
4. Sender's Email Address : username@yahoo.com.tw
5. DNS IP Address        : 168.95.1.1
6. Daily Status Report   : 12:00
7. Mail Receivers
8. Test Email Configuration
0. Return to previous menu

Please Enter Your Choice =>
    
```

Figure 2-14 Setting the Email information

UPS SNMP HTTP AGENT

No.	Function	Description	Example/Remark
1.	Mail Server	Setting Email server to receive the mail form USHA	yahoo.com.tw
2.	User Account	User account for the mail server	AAA
3.	User Password	The password of the mail server	*
4.	Sender's Email Address	The Email Address of sender	username@yahoo.com.tw
5.	DNS IP Address	Set DNS IP address	168.95.1.1
6.	Daily Status Report	Setting the time of daily status report (hh:mm)	12:00
7.	Mail Receivers	Set the mail account, mail type and event level in mail receiver table	
8.	Test Email Configuration	Set yes/no to send a mail test to the mail account which set in mail receiver table	

After completing these settings, press “0” to return to the configuration menu.

UPS Information Group Setting

From the UPS Parameters / UPS configuration menu press “1” to see the UPS information. (Figure 2-15)

+-----+ [UPS Information Group] +-----+	
1. UPS Manufacture	: Phoenixtec
2. UPS Model Name	: C-1000
3. UPS Identification	: NAS server
0. Return to previous menu	
Please Enter Your Choice =>	

Figure 2-15 UPS Information Group

No	Function	Description	Example/Remark
1.	UPS Manufacture	Showing the UPS Manufacture or setting this value by user	Phoenixtec
2.	UPS Model Name	Showing the UPS Model Name or setting this value by user	C-1000
3.	UPS Identification Name	Alphanumeric string	NAS server

After completing these settings, press “0” to return to the configuration menu.

UPS Rating Group

From the UPS Parameters / UPS configuration menu press “2” to set the UPS rating value. (Figure 2-16)

UPS SNMP HTTP AGENT

```

+-----+
|                                     |
|                                     | [UPS Rating Group] |
|                                     |
+-----+
1. Rating Voltage           : 0
2. Rating Current          : 0.00
3. Battery Voltage         : 0
4. Battery Low Voltage (AC failed) : 10.5
5. Battery Full Voltage (AC failed) : 12.5
6. Battery Low Voltage (AC normal)  : 11.5
7. Battery Full Voltage (AC normal)  : 13.5
8. Battery Replace Date      : 01/01/2005
0. Return to previous menu

Please Enter Your Choice =>

```

Figure 2-16 UPS Rating Group

No	Function	Description	Example/Remark
1.	Rating Voltage	Showing the UPS rating voltage or setting this value by user	0
2.	Rating Current	Showing the UPS rating current or setting this value by user	0.00
3.	Battery Voltage	Showing battery voltage or setting this value by user	0
4.	Battery Low Voltage (AC failed)	The battery low voltage when AC failed	10.5
5.	Battery Full Voltage (AC failed)	The battery full voltage when AC failed	12.5
6.	Battery Low Voltage (AC normal)	The battery low voltage when AC normal	11.5
7.	Battery Full Voltage (AC normal)	The battery full voltage when AC normal	13.5
8.	Battery Replace Date	The battery replaces date (dd/mm/yyyy)	01/01/2005

After completing these settings, press “0” to return to the configuration menu.

Access Control Table Setting

If you wish to use a workstation with SNMP Manager installed, or if you wish to set more restrictive USHA access, you can use the access table to add the IP address of the PC’s on which you wish to modify the access permissions (Figure 2-17).

Note: The configuration of Access Control Table is configured for SNMP and HTTP Network Management. Access through TELNET or RS-232 is permitted only when using the “Community Read/Write” password in Control Group.

```

=====+
| IP Address      Community String      Access      |
=====+
[1] 0.0.0.0      *                      NotAccess
[2] 0.0.0.0      *                      NotAccess
[3] 0.0.0.0      *                      NotAccess
[4] 0.0.0.0      *                      NotAccess
[5] 0.0.0.0      *                      NotAccess
[6] 0.0.0.0      *                      NotAccess
[7] 0.0.0.0      *                      NotAccess
[8] 0.0.0.0      *                      NotAccess

COMMANDS -
1. Modify - Modify an entry of table
2. Reset - Reset an entry to default from table
0. Return to previous menu

Please Enter Your Choice =>
    
```

Figure 2-17 Access Control Table

Press key “1” to modify the data on a line. Press “2” to delete all the data on a line.

NOTE1: The community strings entered in the Community String fields are visible only in the RS-232 connection. The TELNET connection does not display the string. An asterisk “*” will be shown in the field.

NOTE2: If a “NotAccess” access right is associated with an IP address, the associate workstation will not be able to display any information regarding the USHA, even if the Community Read-Only string is entered.

Setting Trap Receivers

If you want to use a PC and perform the SNMP manager ‘trap’ function in order to manage UPS through USHA, the IP address of the PC must be added to the USHA list. Press “1” to modify the data on a line. Press “2” to delete all the data on a line. (Figure 2-18)

Note: The Set Trap Receivers configuration is used only for SNMP Network Manager.

```

=====+
| IP Address      Community String      NMS-Type    NMS-Severity  Desc      |
=====+
[1] 192.168.55.1  public              RFC1628     Informational
[2] 192.168.60.203 public              RFC1628     Informational
[3] 192.168.63.251 public              RFC1628     Informational
[4] 0.0.0.0       public              None        Informational
[5] 0.0.0.0       public              None        Informational
[6] 0.0.0.0       public              None        Informational
[7] 0.0.0.0       public              None        Informational
[8] 0.0.0.0       public              None        Informational

1. Modify - Modify an entry of table
2. Reset - Reset an entry to default from table
0. Return to previous menu

Please Enter Your Choice =>
    
```

Figure 2-18 Setting Trap Receivers.

Back to Main Menu

Press "0" to return to the main menu.

End of USHA console Configuration

After configuration was complete, press "0" to ending the console connection.

Reboot USHA was not necessary, unless you press "6" to ending the console connection and force USHA reboot again.

As so far, USHA initialisation was completed.

NOTE: If you want USHA to load the factory configuration default, you may press "5" to Reset Configuration To Default.

USHA Configuration through TELNET command

1. Make sure that you have a TCP/IP network already installed.
2. Run command shell (i.e. Windows MS-DOS prompt).
3. USHA will initially try to acquire an IP address from the DHCP network service, if exist, on the network.
4. Type "Telnet <IP address obtained from DHCP>" and press enter. Proceed to Step 7.
5. If there is no DHCP network service on the network, contact your network administrator to get an IP address for you workstation that has the same network's address as the USHA's default IP address. **The default IP address of USHA is 172.17.XXX.ZZZ where XXX and ZZZ is the last two pairs of the MAC address of USHA in decimal.**
6. Type "Telnet 172.17.XXX.ZZZ" command and press enter.
7. From this point, the configuration procedures are the same as the configuration via RS-232.

USHA Configuration through a Web Browser

If you are using USHA Pro II or mini USHA, refer to the section entitled "Hardware preparation of USHA Pro II & mini USHA" or, if using USHA ProE II, refer to the section entitled "Hardware preparation of USHA ProE II".

Hardware Preparation of USHA Pro II & mini USHA

1. Procure a workstation with Ethernet card on which a Web Browser is installed.
2. Connect the network cable (twisted-pair cable) from the workstation's LAN port to an active 10/100-hub port.
3. Connect another network cable (twisted-pair cable) from the LAN port of the USHA Pro II or mini USHA to an active 10/100-hub port. (Figure 2-19).
4. Set the USHA Pro II or mini USHADIP-switches, the switches 1 and 2 are OFF.
5. Turn on the UPS and wait for USHA Pro II (mini USHA) to boot up (around 90 seconds).



Figure 2-19
Connecting the Ethernet cable from the LAN port of USHA Pro II and mini USHA.

Hardware Preparation of USHA ProE II

1. Procure a workstation with Ethernet card on which a Web Browser is installed.
2. Connect the network cable (twisted-pair cable) from the workstation's LAN port to an active 10/100-hub port.
3. Connect another network cable (twisted-pair cable) from the USHA ProE II LAN port to an active 10/100-hub port. (Figure 2-20)
4. Set the USHA ProE II DIP-switches, the switches 1 and 2 are OFF.
5. Push the reset button at the back of USHA ProE II to reset it. Wait for USHA ProE II to boot up (around 90 seconds).



Figure 2-20 Connecting the Ethernet cable from the LAN port of USHA ProE II.

Manipulates network routing table in your workstation

Normally, the first time you use USHA, your workstation is unable to communicate to USHA since they are not in the same IP subnet. However, you may use “route add” command to manipulate the network routing table in your workstation in order to carry out the USHA configuration. If the IP address of the machine is in the same subnet as USHA, just run the Web Browser directly.

1. Procure a workstation (Microsoft Windows 95, 98, ME, NT4.0, 2000, XP, 2003 or later installed) and set up the TCP/IP protocol, if necessary.
2. Enter the following command to add a routing condition:

```
Route add 172.17.7.18 210.67.192.147
```

Assume the IP address of the workstation is 210.67.192.147.

Note1: Default IP address of USHA is 172.17.XXX.ZZZ where XXX and ZZZ is the last two pairs of the MAC address of USHA in decimal.

Ex: Mac address = 00 E0 D8 04 0A 15 then the default IP = 172.17.10.21

Note2: See the Windows manual for detailed information on how to add a routing condition to the PC.

Running the Web Browser (Netscape or Internet Explorer)

1. Make sure that you have a TCP/IP network already installed.
2. If there is no DHCP network service on the network, contact your network administrator to get an IP address for you workstation that has the same network's address as the USHA's default IP address. **The default IP address of USHA is 172.17.XXX.ZZZ where XXX and ZZZ is the last two pairs of the MAC address of USHA in decimal.**

3. Start your Web Browser.

Enter the URL "http://172.17.XXX.ZZZ" in the address box where XXX and ZZZ is the last two pairs of the MAC address of USHA in decimal, The USHA home page will be shown on the screen. (Figure 2-21)



Figure 2-21 USHA home page screen: Comprehensive View.

USHA Initial Configuration

1. Select *USHA Configuration* from the *USHA Management* of the main menu to setup the network configuration parameters (Figure 2-22).
2. Click the *Become Administrator* button at the bottom of the screen. Enter **USHA** as the login name and **admin** as the password. (Case sensitive)
3. Enter the USHA IP address.
4. Enter the USHA Gateway Address in the network.
5. Enter the USHA Subnet Mask of the network.
6. Enter the IP address of the *Primary Time Server* and *Secondary Time Server* in the network.
7. Click the *Set Values* to save the settings.
8. Select *Date and Time* from the *USHA Management* of the main menu and enter the appropriate date and time information in the specified format.
9. Select *Set Values* to save the date and time settings.
10. Select *USHA Control* to enable or disable the network protocols (Figure 2-23).
11. Select *Apply* to save the changes.



Figure 2-22 USHA initial configuration page screen.

UPS SNMP HTTP AGENT

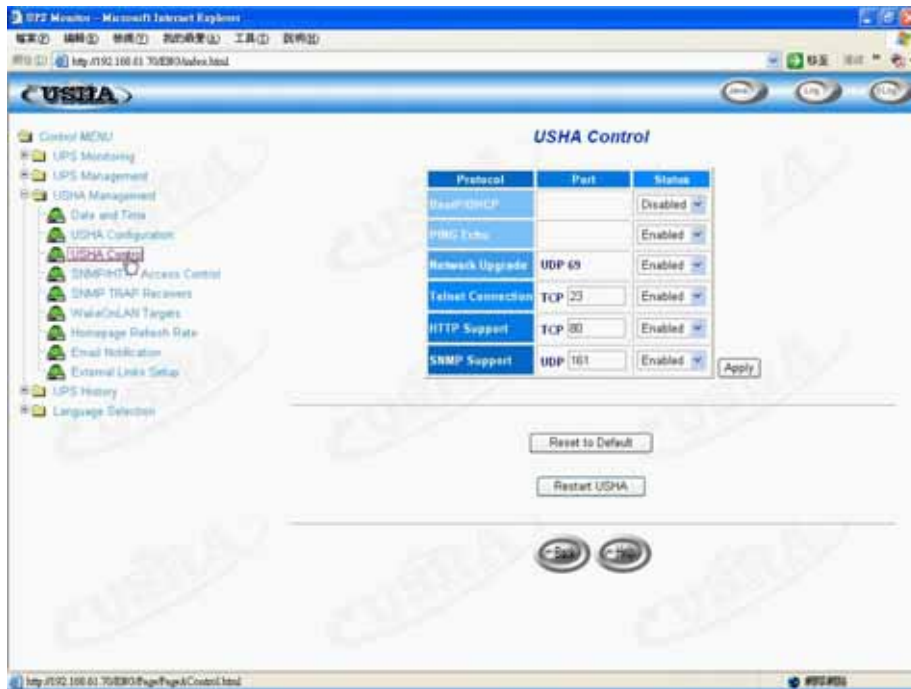


Figure 2-23 USHA Control page screen.

Chapter 3 Managing USHA/UPS via Web Browser

Note: If you do not add the IP address of the workstation to the *Access Control Table* (via RS232 or Telnet) or the *SNMP/HTTP Access Control* (via Web Browser) in USHA, you can only view the UPS status; it will not be able to perform any configuration on USHA/UPS. (See Pg. 19 *Access Control Table Setting* and Pg. 39 *SNMP/HTTP Access Control* for details.)

Utilising the USHA Home Page

1. Start your Web Browser and enter USHA IP address
2. The USHA home page will be shown on the screen.
3. Select the help icon located at the bottom of each page for a detail description of each item.

UPS Monitoring

This main menu contains all the measurements and data read from the UPS. All the sub-menus are read-only for all users; write-mode access is not allowed.

Comprehensive view

This page gives a snapshot of all the principal UPS parameters as shown in Figure 3-1. The page will refresh automatically. To set the refresh time, select the menu *USHA Management – Homepage Refresh Rate*.

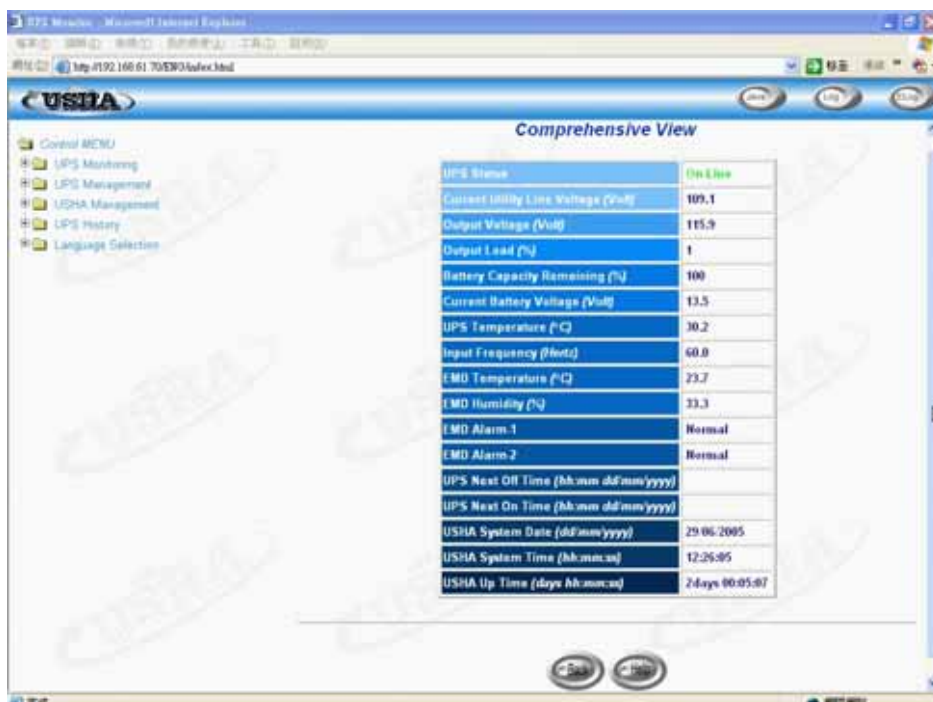


Figure 3-1 USHA home page screen: Comprehensive View.

UPS Identification

Select *UPS Identification* from the *UPS Monitoring* menu of the home page to get a table of the UPS and USHA Identification Parameters (Figure 3-2). User can determine the hardware and software revision of USHA in the *USHA Firmware Revision* field.

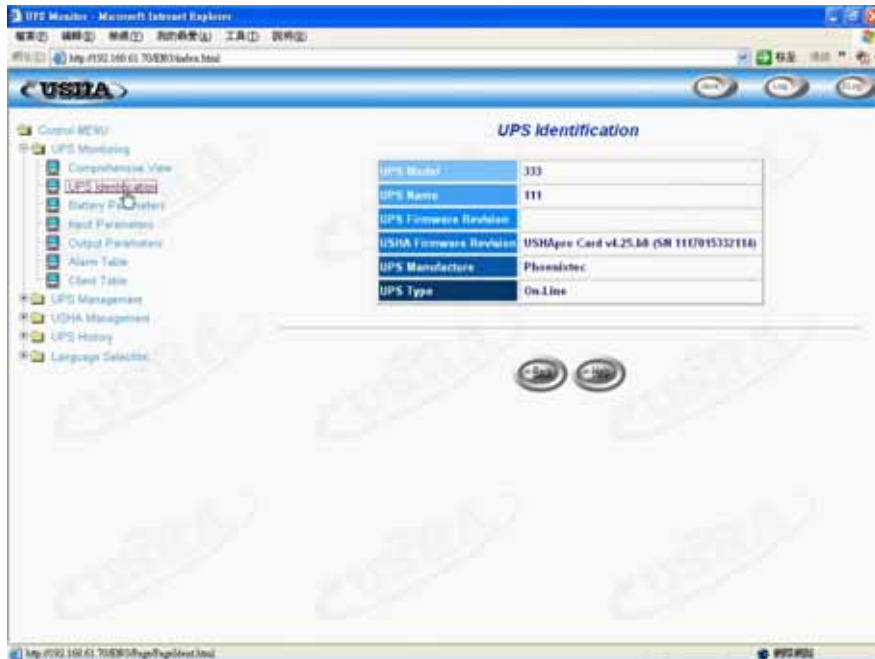


Figure 3-2 USHA UPS Monitoring page screen: UPS Identification.

Battery Parameters

Select *Battery Parameters* from the *UPS Monitoring* on the main menu to get a table of the UPS battery parameters (Figure 3-3).



Figure 3-3 USHA UPS Monitoring page screen: Battery Parameters.

Input Parameters

Select *Input Parameters* from the *UPS Monitoring* on the main menu to get a table of the UPS input parameters (Figure 3-4).

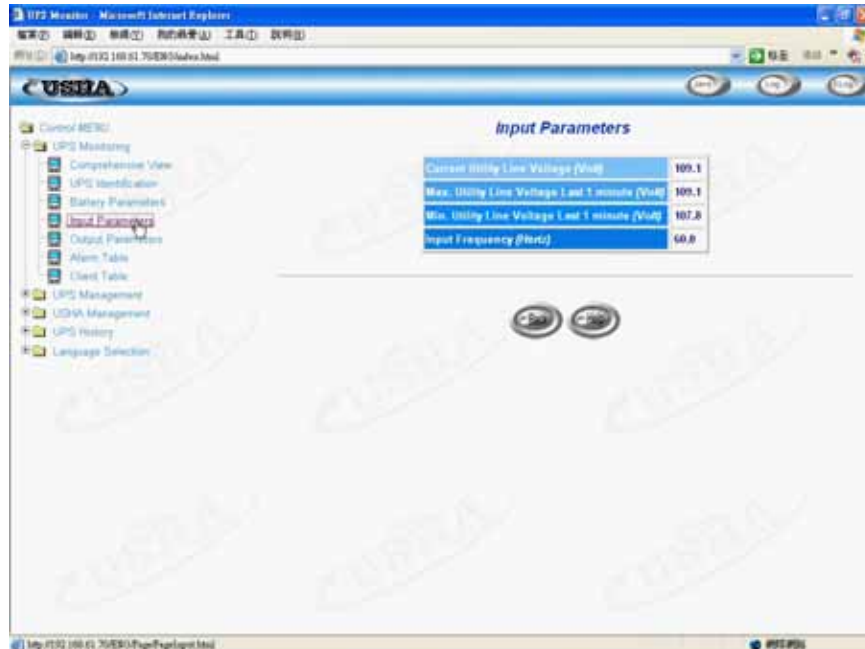


Figure 3-4 USHA UPS Monitor page screen: UPS Input Parameters

Output Parameters

Select *Output Parameters* from the *UPS Monitoring* on the main menu to get a table of the UPS output parameters (Figure 3-5).

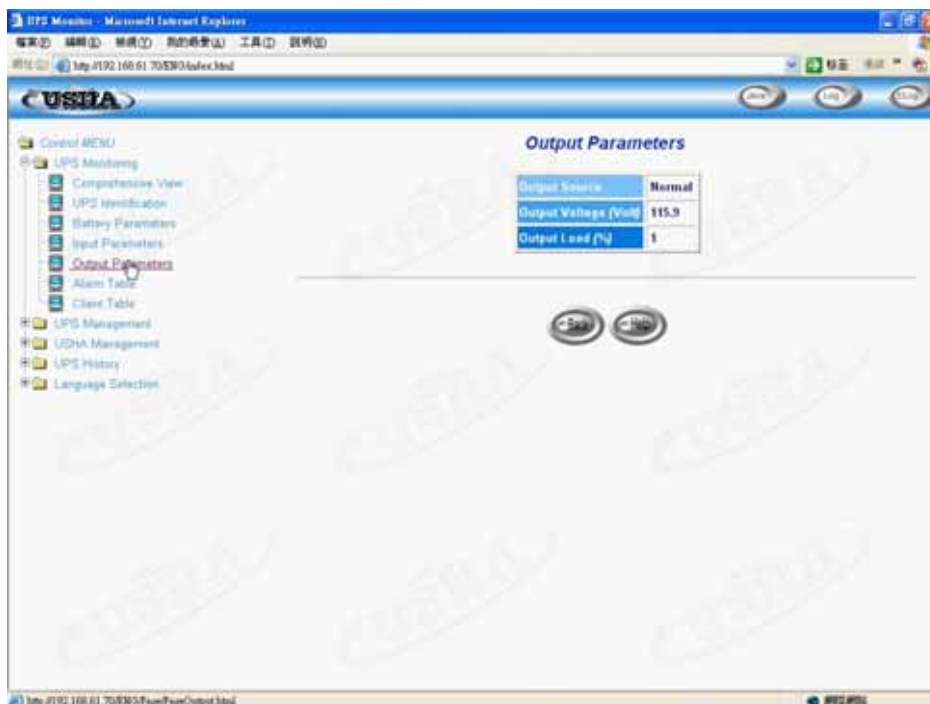


Figure 3-5 USHA UPS Monitor page screen: UPS Output Parameters

Alarm Table

Select *Alarm Table* from the *UPS Monitoring* on the main menu to get a table of the UPS alarms presents (Figure 3-6).



Figure 3-6 USHA UPS Monitor page screen: Alarm Table

Client Table

Select *Client Table* from the *UPS Monitoring* on the main menu to get a table of the connected clients running the shutdown software (Figure 3-7)

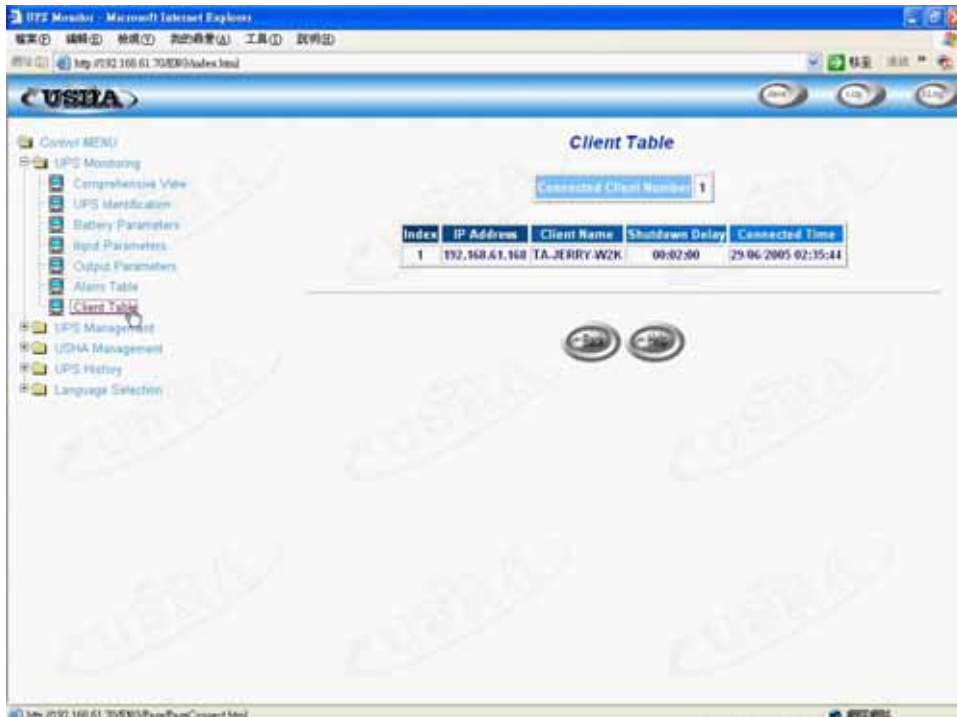


Figure 3-7 USHA UPS Monitoring page screen: Client Table

UPS Management

This menu contains the control parameters of the UPS connected to the USHA. All the sub-menus are available in read-only for all users, whereas only the administrator has access in read/write mode.

UPS Configuration

This menu displays the UPS nominal input and output data (Figure 3-8)



Figure 3-8 USHA UPS Configuration screen

UPS Control

This menu lets you send the shutdown commands associate with the pre-set UPS shutdown delay time and UPS sleep time to the UPS manually. Some of the items in this menu are visible only to those having read/write access rights. (Figure 3-9)

UPS SNMP HTTP AGENT



Figure 3-9 USHA UPS Control screen

UPS Battery Test

This menu enables you to check the last battery test information and run the battery test, if the feature is available on the UPS (Figure 3-10). Some of the items in this menu are visible only to those having read/write access rights.

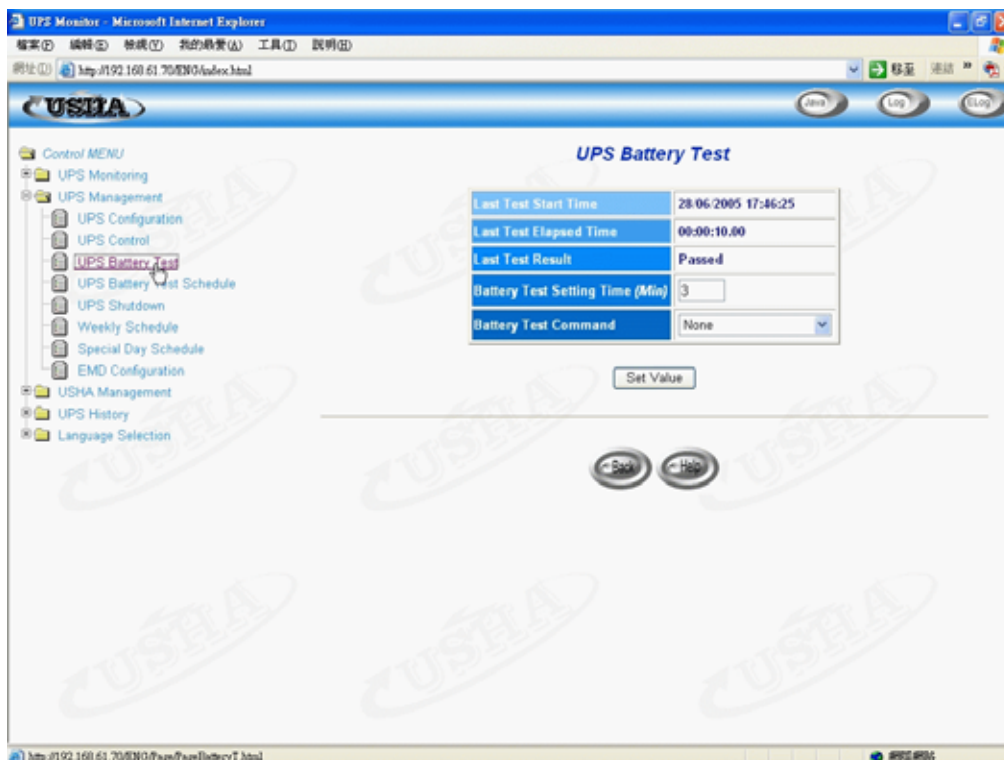


Figure 3-10 USHA UPS Battery Test

UPS Battery Test Schedule

This menu enables you to run the battery test schedule, Available options are:

None - No action

Quick Test (10 sec) - Quick test for 10 seconds

Test Until Battery Low - Test until battery low

Timed Test - Test for the time specify in the Test Time column (Figure 3-11). Some of the items in this menu are visible only to those having read/write access rights.

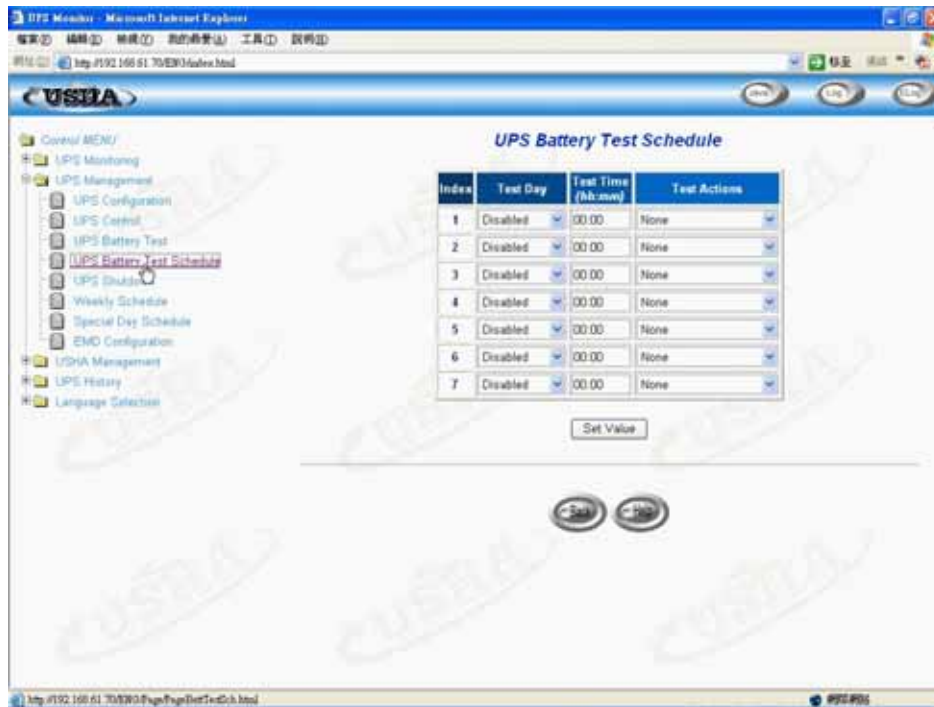


Figure 3-11 USHA UPS Battery Test Schedule

UPS Shutdown

This menu lets you modify the parameters associated with the shutdown events (Figure 3-12).

The shutdown events available for commanding shutdown of the clients and UPS are:

1. **AC Failed** : Mains power supply down
2. **Battery Low** : Remaining battery charge low
3. **UPS Overload** : Output overload
4. **UPS Over Temperature**: UPS internal overheating
5. **Weekly Schedule** : UPS Shutdown/Restore pre-set for each week
6. **Special Day** : UPS Shutdown/Restore pre-set on certain day
7. **EMD Temperature over Threshold**: The EMD temperature sensor detects over high or under low temperature.
8. **EMD Alarm-1**: Alarm-1 sensor detects an active alarm.
9. **EMD Alarm-2**: Alarm-2 sensor detects an active alarm.

UPS SNMP HTTP AGENT

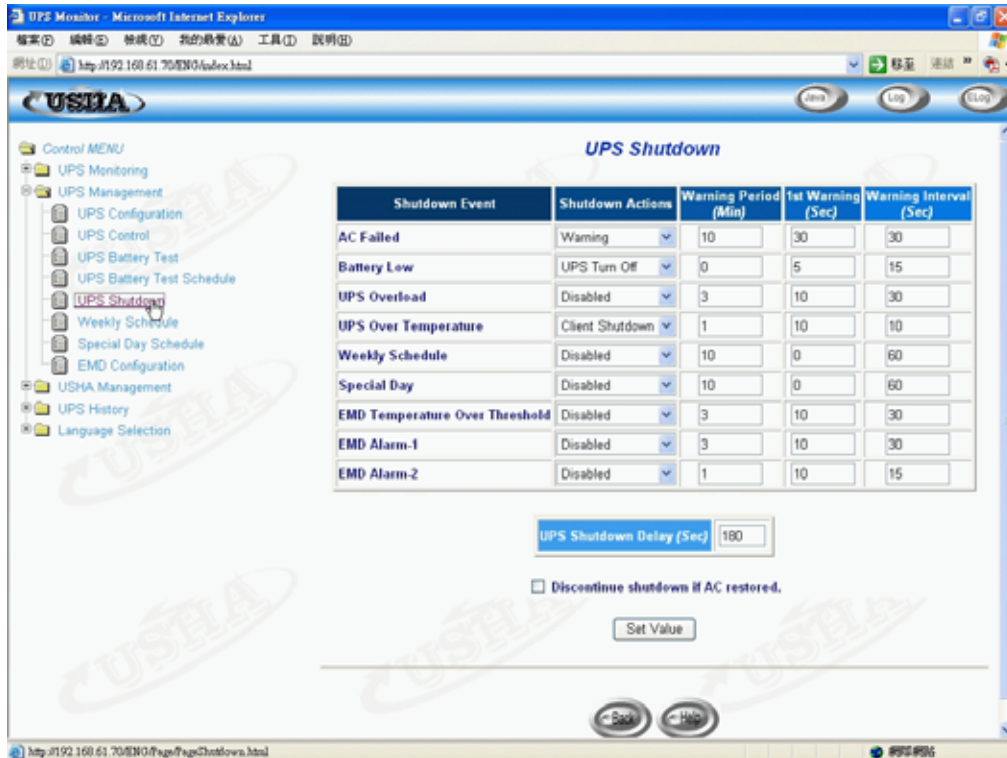


Figure 3-12 USHA UPS Shutdown

When there is a shutdown event occurred, USHA would take proper action as define on the *Actions* column correspond to the shutdown event. Available actions are:

Disabled: Action is disabled

Warning: Warning message will be broadcast to the connected clients

Client Shutdown: Warning message will be broadcast and shutdown command will be sent to the connected clients. UPS will then go to sleep mode

UPS Turn Off: Warning message will be broadcast and shutdown command will be sent to both the connected clients. Then UPS will be turned off

The time specifies in the *Delay* column is the time delay after the occurrence of the corresponding shutdown event. Shutdown command will be sending out after this delay time.

The *1st Warning* specifies the time of the first warning message to be broadcast on the screen of the connected clients. And, the *Warning Interval* specifies the frequency of the next warning message.

Weekly Schedule

This menu lets you modify the parameters of the shutdown/restore events associated with the days of the week (Figure 3-13).

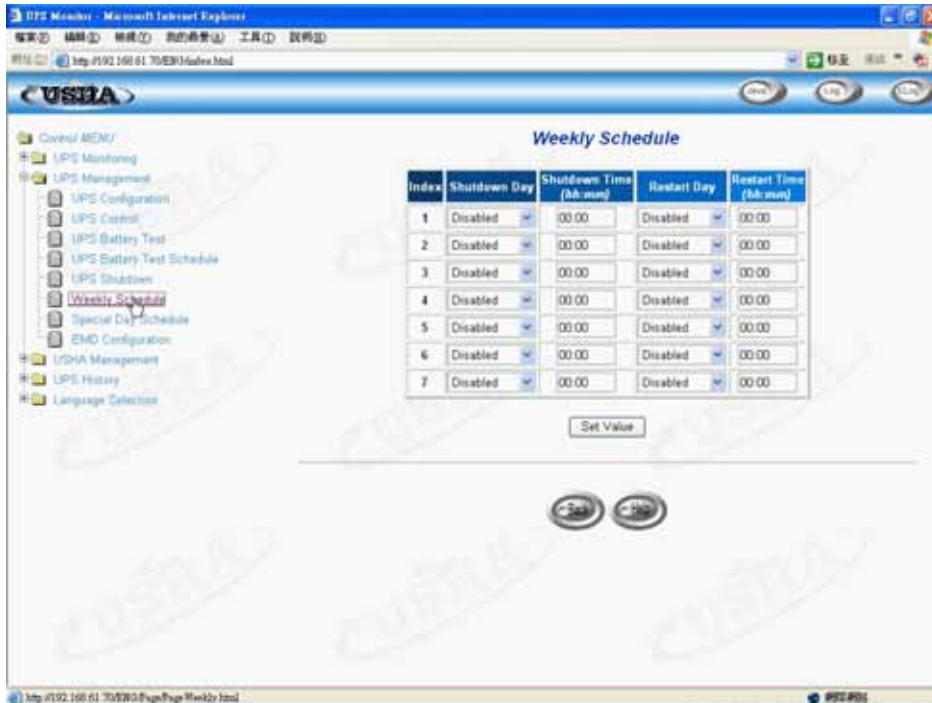


Figure 3-13 USHA Weekly Schedule

Special Date Schedule

This menu lets you modify the parameters of the shutdown/restore events associated with certain days of the year (Figure 3-14).

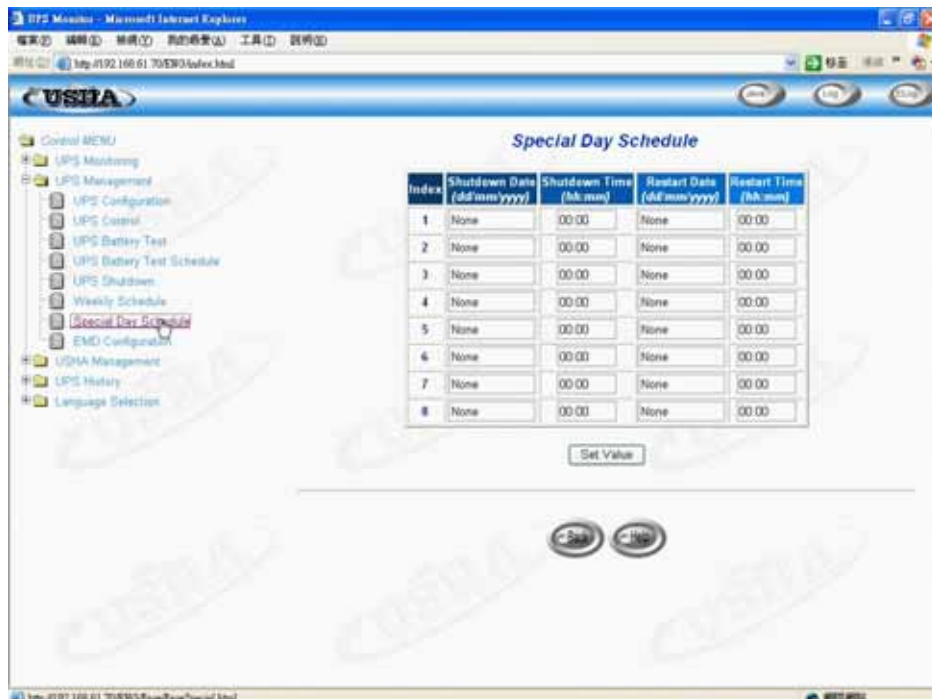


Figure 3-14 USHA Special Date Schedule

EMD Configuration

This menu allows user to configure all necessary parameters of an EMD (Figure 3-15). Set the EMD status to Auto can auto detect the EMD type. There are two types of EMD “EMD-HT” and “EMD-T”. The Temperature and Humidity will show in the Comprehensive View. User must setup the EMD than could see this configuration page. About setup EMD device, please see the EMD_ installation_ manual_ V1.10 for detail.

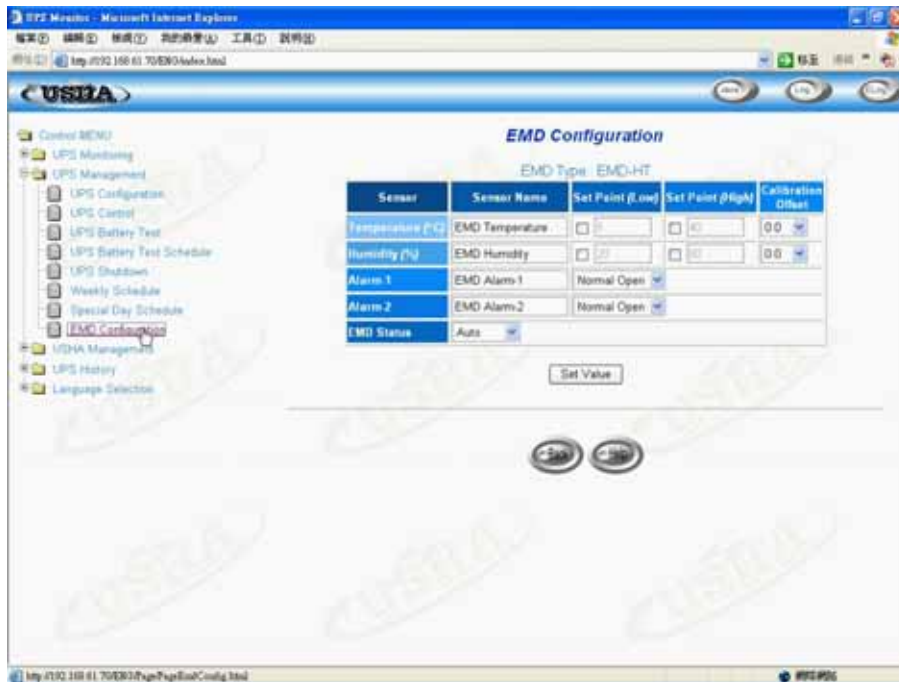


Figure 3-15 EMD Configuration screen

USHA Management

Through this menu, you can display and modify the USHA control parameters. All the menus are available in read-only for all users, whereas only the administrator has access in read/write mode.

Date and Time

This menu lets you set the USHA internal date and time. There are three ways to set the Date and Time (Figure 3-16). Synchronize with computer time, Synchronize with NTP server or set the date and time by manual.

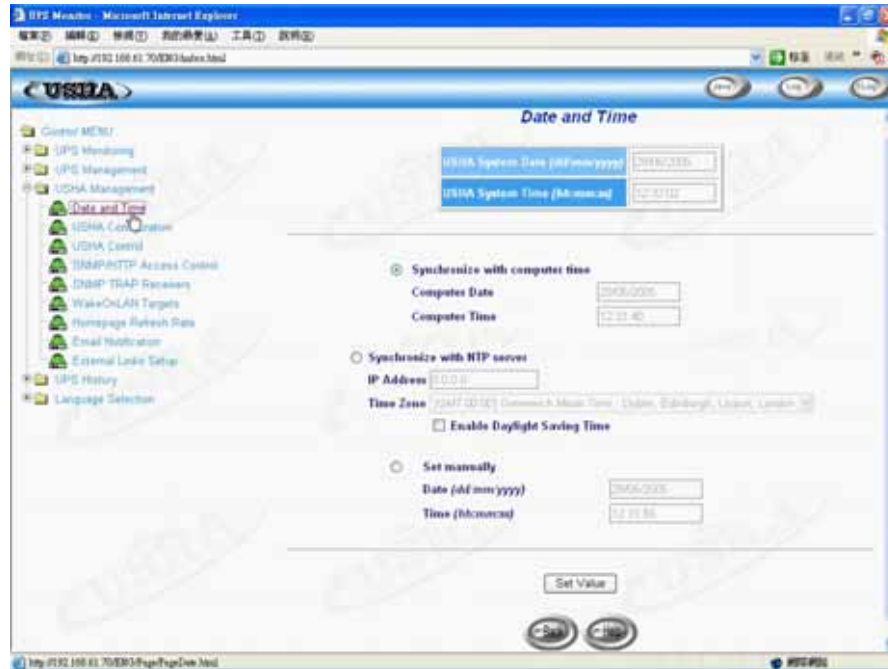


Figure 3-16 Date and Time

USHA Configuration

This menu lets the administrator set the local network configuration parameters in USHA. The basic variables for SNMP management can also be set.

1. **USHA IP Address:** The IP address of the USHA in dotted format (e.g. 192.168.1.100). Note that changing the IP Address of the USHA, reboot was unnecessary.
2. **USHA Gateway Address:** The IP address of the network gateway in dotted format (e.g. 192.168.1.254).
3. **USHA Subnet Mask.** The Subnet Mask for your network (e.g. 255.255.255.0).
4. **System Contact:** SNMP Network Administrator string.
5. **System Name:** SNMP Network Administrator string.
6. **System Location:** SNMP Network Administrator string.
7. **Battery Last Replaces Date:** The date when the UPS system batteries were last replaced. Only the Administrator should reset this value.
8. **History Log Interval:** This value is the time in seconds to poll Input Voltage, Output Voltage, Load, Capacity, Battery temperature and Input frequency. These values are saved in the History Log. The maximum value for this setting is 28800 seconds (i.e. 8 hours).
9. **Extended History Log Interval:** This field shows the set interval, in minutes, to create an extended history log. After every interval, the UPS parameters will be consolidated and minimum, maximum and average values of these parameters will be stored as extended history log. This value can range between 3 and 9000 minutes.
10. **USHA Polling Rate (sec):** Polling rate on which USHA update the parameters from UPS.
11. **USHA Baud Rate (sec):** The data transmission rate between the UPS and USHA.

12. **Default Language:** Default language options included “English”, “Traditional Chinese”, “Simplified Chinese” and “Auto”. USHA Home Page will be displayed using the language set in the Web Browser if “Auto” is selected.
13. **Temperature Unit:** Select the Temperature Unit to Celsius or Fahrenheit.

USHA Control

This menu lets you enable or disable the communication protocols available in the USHA and affect a restart and reset of the USHA internal parameters. Some of the items in this menu are visible only to those having read/write access rights. (Figure 3-17)

1. **BOOTP/DCHP Status:** Enabling or disabling the Boot Protocol (BOOTP) / Dynamic Host Configuration Protocol (DHCP). These protocols are Internet standards used to get a dynamic IP address from a BOOTP / DHCP server.
2. **Ping Echo:** Enabling or disabling the USHA to respond to Ping requests.
3. **Network Upgrade:** Enabling or disabling the Trivial File Transfer Protocol (TFTP) upgrade control. You can use **upgrade.exe** on Windows via TFTP to upgrade USHA firmware.
4. **Telnet Connection:** Enabling or disabling the terminal to server application (Telnet) control process. The standard port is 23.
5. **HTTP Support:** Enabling or disabling the HTTP connection with the USHA. The user may configure HTTP protocol to use a port number other than standard HTTP port (80).
6. **SNMP Support:** Enabling or disabling the SNMP connection with USHA. The user may configure the SNMP protocol to use a port number other than the standard SNMP port (161).
7. **Reset Agent to Default:** Instructs USHA to reset parameters to factory default value.
8. **Restart Agent:** Instructs USHA to restart.

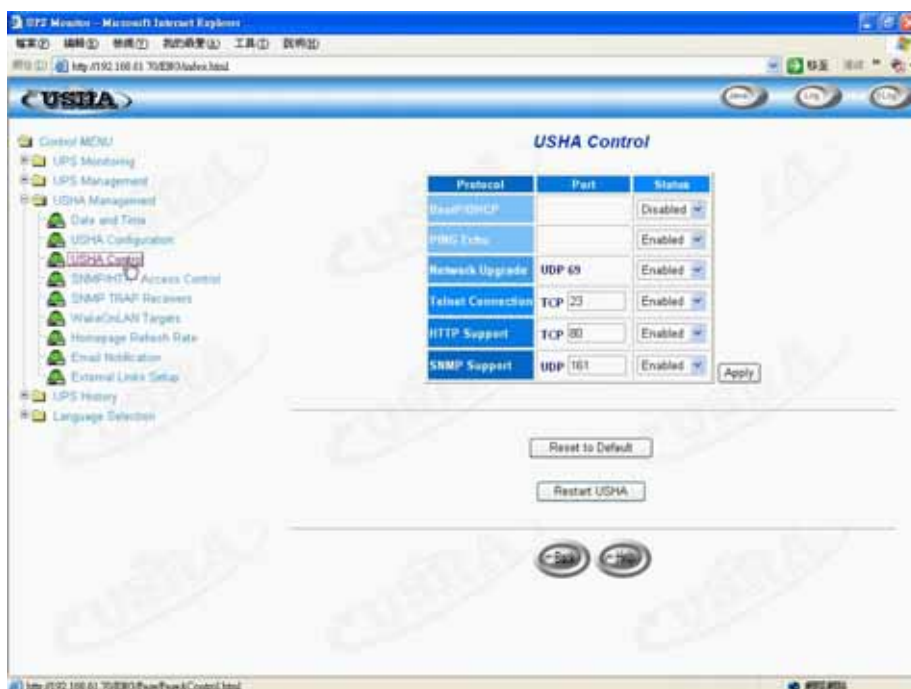


Figure 3-17 USHA Control

SNMP/HTTP Access Control

This menu displays a list of the workstation enabled for read/write access to USHA. (Figure 3-18) See **Appendix C** HTTP Security Control for detail

1. **Index:** The index number of the entry in the table.
2. **NMS IP Address:** The management station's IP address. 0.0.0.0 means entry not configured. 255.255.255.255 grant the access right to all IP. It also can configure all IP address in same subnet with same access right. Like 192.168.1.255
3. **Community:** Low-level password associated with the IP Address. The maximum length of the string is 16 characters.
4. **Access Type:** Access right associated with the IP Address. Available options are: NotAccess, Read, and Read/Write. If the IP Address was set to NotAccess or Read, it can't grant to administrator right even use Admin password.

Note: As administrator, can customize this configure to limit different workstation or subnet using different password with different Access Type. While different workstation or subnet using itself password with Read/Write Access Type to login, only allow modifying the USHA parameters and itself Access Type, to prevent someone arbitrarily change unless it login with Admin password.

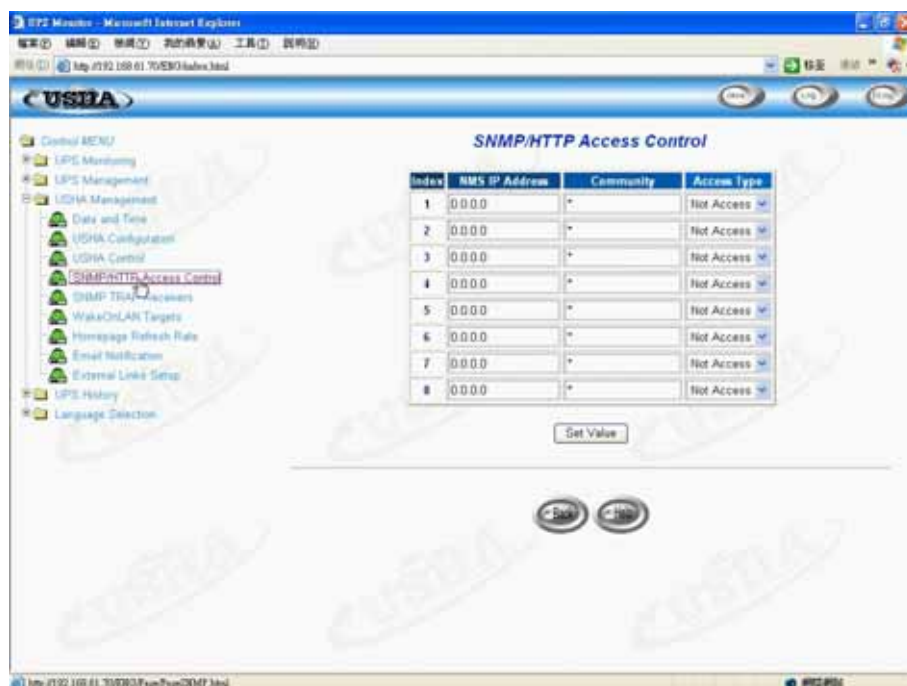


Figure 3-18 SNMP/HTTP Access Control

SNMP Trap Receivers

This table can hold a maximum of four entries. It holds the list of the IP address of the Network Management Stations (NMS), which will receive the SNMP traps send by USHA. (Figure 3-19)

1. **Index:** The index number of the entry in the table.
2. **NMS IP Address:** The IP Address in dotted format of the NMS station to which the trap should be sent.
3. **Community String:** Low-level password associated with the IP Address. The maximum length of the string is 16 characters.
4. **Trap Type:** Types of traps to be received.
 - **None:** Traps are not be received
 - **RFC-1628 Trap:** Traps are received base on RFC-1628
 - **USHA Trap:** Traps are received base on USHA MIB
5. **Severity:** Set the level of the trap to be received.
 - **Information:** All traps are received
 - **Warning:** Trap that need to be noticed and are critical is received
 - **Severe:** The significant traps such as UPS failure and low-battery which cause the immediately halt the output of the UPS are received
6. **Description:** Customer description string.

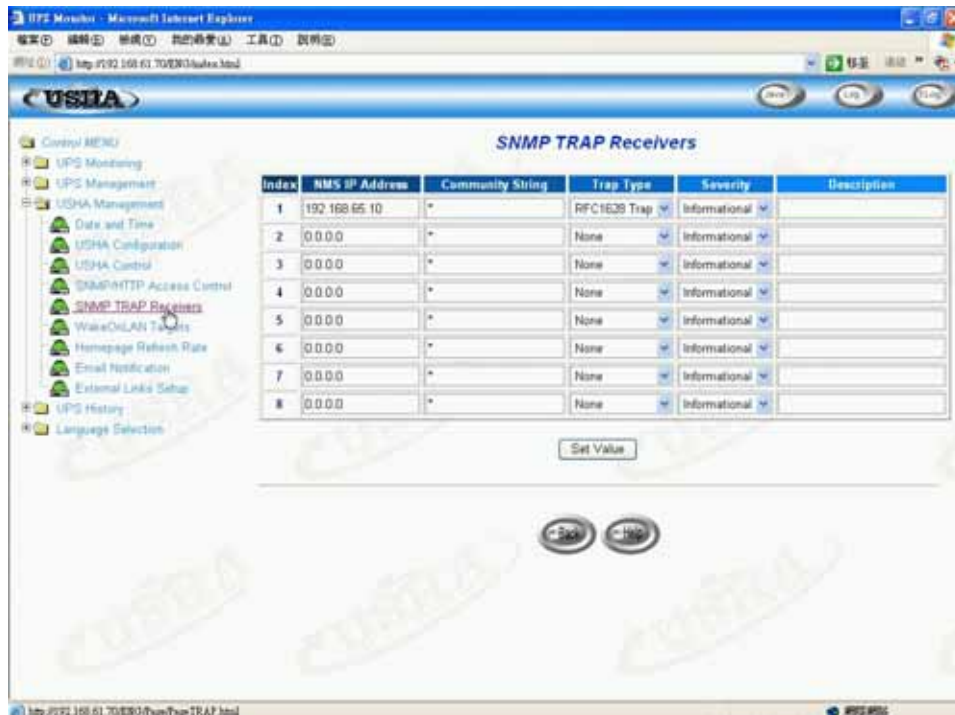


Figure 3-19 SNMP TRAP Receivers

WakeOnLAN Targets

WOL" function could start up client PC from network by MAC address. From this page, we can set 32 MAC Address of clients. When the clients shutdown cause of UPS shutdown events, after shutdown events returned to normal, WOL packet will send to client to start up PC. s (Figure 3-20).

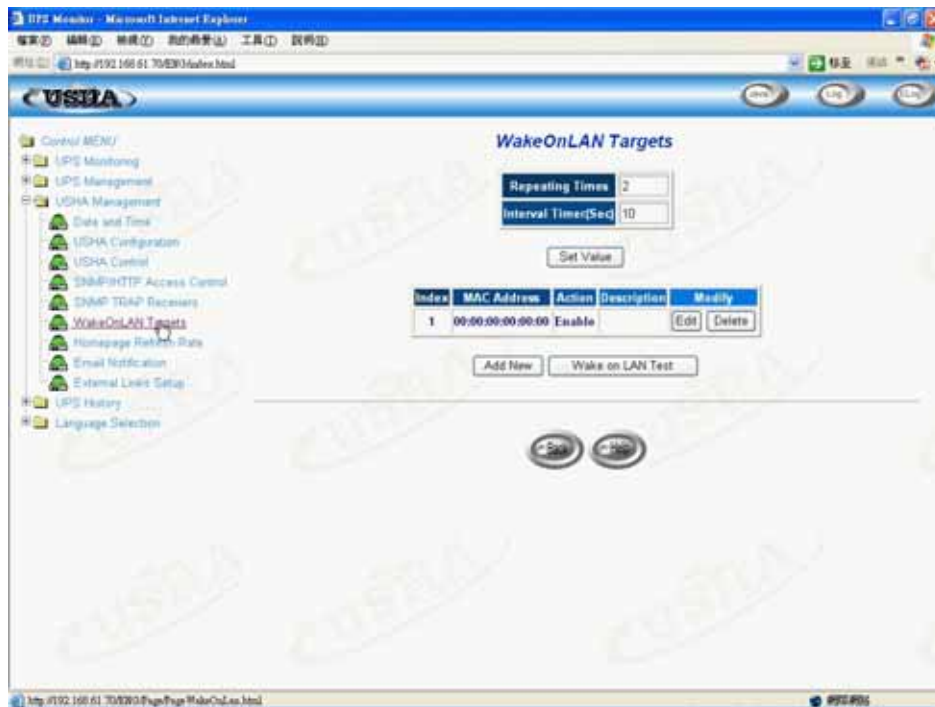


Figure 3-20 WakeOnLAN Targets

Homepage Refresh Rate

This menu lets the administrator set the refresh interval of the USHA menu pages (Figure 3-21).

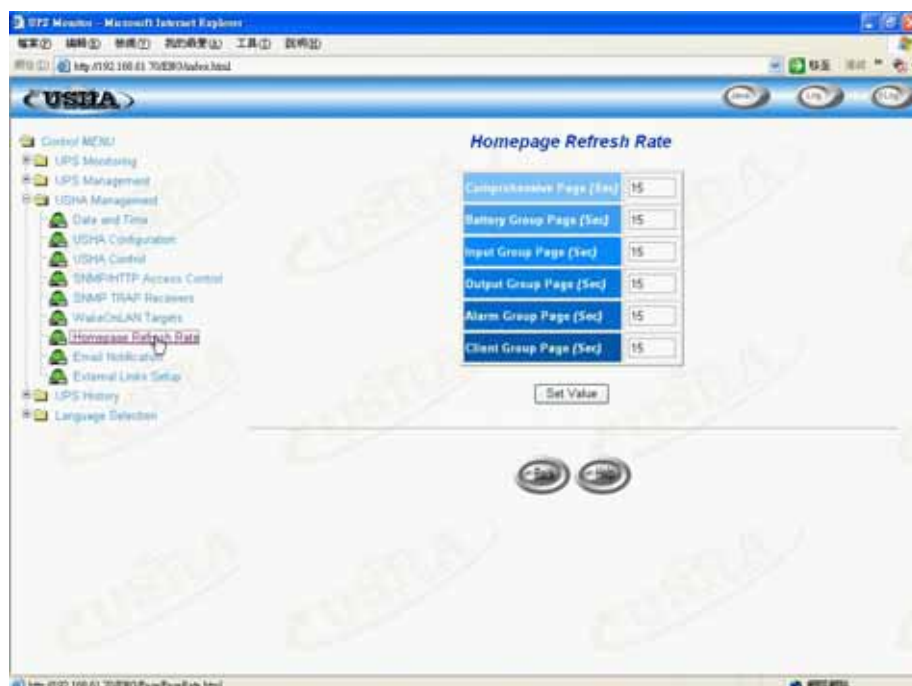


Figure 3-21 Homepage Refresh rate

Email Notification

This page describing of UPS email notification setting to let administrator configure Mail server and Mail receiver in order to receive notification or report from USHA by email once power event was occurred. (Figure 3-22)

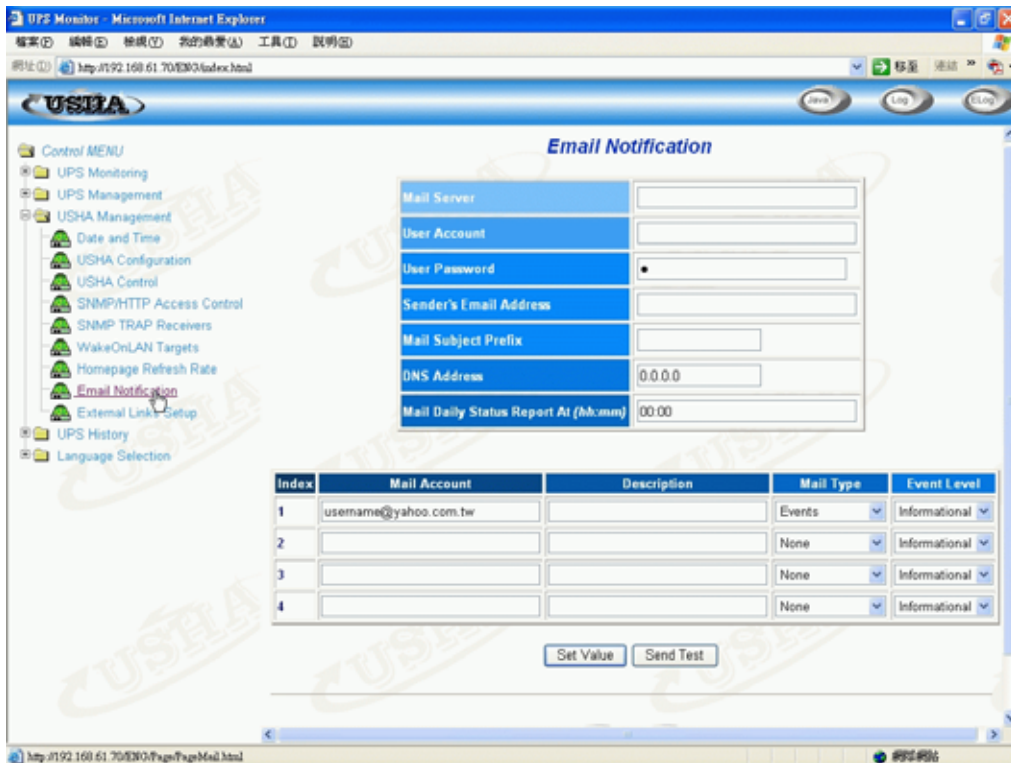


Figure 3-22 E-mail Notifications

1. **Mail Server**
This item is the Hostname of a SMTP Mail Server that will be used to send email messages from the USHA. If entering a Hostname, you are also required to enter the DNS Address.
2. **User Account**
This item is the User Account of Mail Server. Default has no entry, and only required if Mail Server needed for authentication to send mail.
3. **User Password**
This item is for entering the User Password of User Account.
4. **Sender's Email Address:** This field specify the content of the 'From' field of the Email. If this field left blank, the sender's address will be account@ip_address.
5. **Mail Subject Prefix:** The string prefix in the mail subject to identify the device which sends out the mail.
6. **DNS Address**
This item is the IP Address of your network DNS server that's responsible for translating names into addresses, routing mail to its proper destination. Default, this field will contain 0.0.0.0.
7. **Mailing Daily Status Report At (hh:mm)**
If you intend to have the USHA send a Daily Status report to select Mail Receiver, you need to enter the time of day in 24-hour format at which time you want the email sent.

UPS SNMP HTTP AGENT

8. **Mail Receiver**

This column is for entering the email address of the individual you wish the USHA to send mail to.

9. **Description**

This column is for entering describing of each Mail Receiver you configure for reference purposes.

10. **Mail Type**

This column is for selecting what type of email is sent to a specific Mail Receiver. The choices are *None*, *Events*, *Daily Status*, or *Event/Status*.

- **None:** allow you to disable the sending of email to a specific recipient.
- **Events:** specifies that the recipient should receive event-related messages while event occur.
- **Daily Status:** specifies that the recipient should receive the Daily Status message while "Mailing Daily Status Report At (hh:mm)" setting time is up. The message contains two file attachments containing information logged by the USHA (in .csv format suitable for viewing in Microsoft Excel). One attachment contains the History Log contents (Logged UPS data) and the other contains the Event Log contents (Logged Event text).
- **Events/Status:** specifies that the recipient should receive an email message containing the event-related notification and the two file attachments (as described above), each time an event notification is sent.

11. **Event Level**

This column is for selecting the Severity level of notification you wish to send to each Mail Receiver configured to be sent Mail Type: Events or Events/Status. This filter is based on the SNMP-based traps (Events) and allows selection of Informational, Warning or Severe. Refer to the MIB documentation for more information.

External Links

This page describes the setting of External Links. Up to four links can be setup by this page, each link can configure to an external web page that user can easily to connect to related web pages. Such as another UPS with USHA card, or technical support homepage. (Figure 3-23)

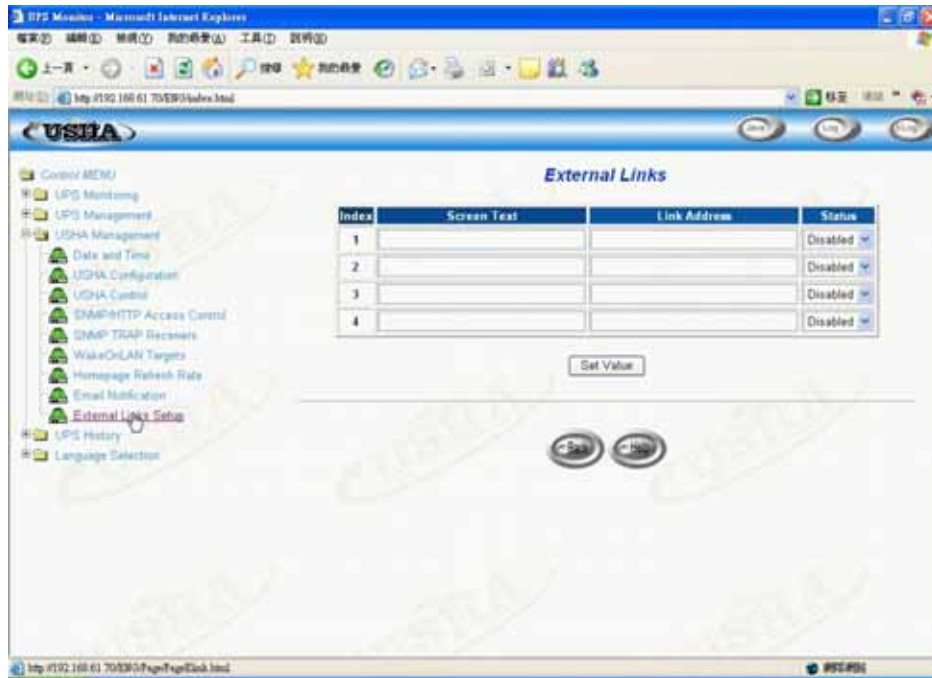


Figure 3-23 External Links

Screen Text

This is the description of hyperlink name, which will display on the menu tree for user's reference.

Link Address

This field defines the web page location to be connected, in IP address or URL format.

Status

This field controls the visibility of this hyperlink on menu tree. Setting "Disable" will make this hyperlink invisible from menu tree.

UPS History

Through this menu you can view all types of UPS & USHA log messages displayed in chronological order such as the *UPS History Log*, *UPS Extended Log*, *UPS Events Log* and *Agent Events Log*. These log messages can help you detect and diagnose problems with your USHA.

UPS History Log

To save the history log to a file in Microsoft Excel format, go to the *Clear & Save Log Data* sub-menu and click on the link *UPS History Log* under the *Save Log Data* title bar.

1. **Log Date:** Date on which the recording was made
2. **Log Time:** The time in a 24-hour format when the values were recorded
3. **Input Voltage:** The input voltage in Volts at the time of recording
4. **Output Voltage:** The output voltage in Volts at the time of recording
5. **Output Load:** This shows the load on the UPS in terms of percentage at the time of recording
6. **Battery Capacity:** The remaining battery capacity expressed in percent of full capacity
7. **Input Frequency:** The input frequency in Hertz at the time of recording
8. **UPS Temperature:** The temperature of the UPS battery in Celsius at the time of recording
9. **EMD Temperature:** The current EMD temperature.
10. **EMD Humidity:** The current EMD humidity.

UPS Extended Log

This page gives a consolidated view of the UPS parameters taken over a period. For each of the UPS parameters, minimum, maximum and the average values are shown in each of the records. The Administrator can change the consolidation interval by changing the value of the *Extended Log Interval* in *USHA Configuration* page. The existing log is overwritten when the maximum numbers of entries are reached.

1. **Start Date:** Date on which the recording was made
2. **Start Time:** The time in a 24-hour format when the values were recorded
3. **End Date:** The ending date of the consolidation interval for the record
4. **End Time:** The ending time of the consolidation interval for the record
5. **Input Voltage:** The minimum, maximum and average values of the input voltage at the time of recording
6. **Output Voltage:** The minimum, maximum and average values of the output voltage at the time of recording
7. **Output Load:** The minimum, maximum and average values of the output load at the time of recording
8. **Battery Capacity:** The minimum, maximum and average values of the battery capacity at the time of recording
9. **Input Frequency:** The minimum, maximum and average values of the input frequency at the time of recording
10. **UPS Temperature:** The minimum, maximum and average values of the UPS temperature at the time of recording

11. **EMD Temperature:** The minimum, maximum and average values of the EMD temperature at the time of recording.
12. **EMD Humidity:** The minimum, maximum and average values of the EMD humidity at the time of recording.

UPS Event Log

This table lists all the events that have occurred since the table was cleared. The existing values are overwritten when the maximum number of entries (rows) has been reached.

1. **Date:** The date when the UPS event occurred
2. **Time:** The time when the UPS event occurred
3. **Event Description:** The description of the UPS event occurred

USHA Events Log

This menu lists all the USHA events that have occurred since the table was cleared. The Administrator has the access right to delete the entries of the table.

1. **Date:** The date when the agent event occurred
2. **Time:** The time when the agent event occurred
3. **Event Description:** The description of the agent event occurred

Clear & Save Log Data

This page lets the Administrator save USHA log data to a file in Microsoft Excel format. Administrator is also able to clear specific log data or choose to clear the log data after saving the log data.

1. **Clear Log Data:** Administrator can clear the specific log data by putting a check mark beside it and click the Clear button.
2. **Clear the corresponding log data as you click the hyper-link below:** Administrator can choose to clear the log data after saving the log to a file. Select Yes or No and click the Apply button. Default value is set to "No"
3. **Save Log Data:** Administrator can save the various USHA log data to a file with the extension .csv that can be opened and read in MS Excel.

Note: When you mouse click any one of the hyper-link here while the "Clear the corresponding log data as you click the hyper-link below" selection is set to "Yes", the corresponding log data will be lost even if you cancel the operation.

Language Selection

Through this menu you can choose different language immediately that you preferred. For users using different languages to browsing USHA at same time. Language options included “English”, “Traditional Chinese”, and “Simplified Chinese”. Language will switch immediately once you click on the option, and it didn't related to default language setting of USHA Management. (Figure 3-24)



Figure 3-24 Language Selections

Extra Browsing Options-PDA & WAP

USHA now provide more easy of using remote browsing ways. User can get the UPS status through PDA or WAP mobile phone, which own ability to connect to Internet already. According to every manufacturer setting was different, please reference to PDA and WAP User Manual for connect to Internet. If your PDA or WAP can browse Internet, You can start browsing the UPS status by input the USHA address.

PDA

Please input on PDA: “USHA address/PDA” or “USHA address/P”

Ex: [HTTP://192.168.11.100/PDA](http://192.168.11.100/PDA) or [HTTP://192.168.11.100/P](http://192.168.11.100/P) you can see the UPS status page. (Figure 3-25)

<p>UPS Status:</p> <p>UPS Status: On Mains</p> <p>Voltage In (VAC): 126.0</p> <p>Voltage Out (VAC): 110.0</p> <p>Output Load (%): 0</p> <p>Frequency (Hertz): 60.0</p> <p>System Up Time: 0day 12:02:14</p> <p>Menu</p>	<p>USHA Menu</p> <p>Status</p> <p>Identification</p> <p>Battery</p> <p>Input</p> <p>Output</p> <p>Clients</p>
<p>Identification:</p> <p>UPS Name: UPS</p> <p>UPS Model: UPS 650</p> <p>Output VA: 690</p> <p>UPS Type: Offline</p> <p>UPS Firmware: 4.01</p> <p>USHA Firmware: USHA Pro II v5.00.</p> <p>Location: Office</p> <p>Admin: MIS</p> <p>System Up Time: 0day 12:43:12</p> <p>Menu</p>	<p>Battery:</p> <p>Battery Status: Battery Ok</p> <p>Time since on Battery Power (Sec): 0</p> <p>Battery Capacity (VDC): 100</p> <p>Battery Voltage (VDC): 13.3</p> <p>Battery Temperature (Celsius) 30.0</p> <p>Menu</p>
<p>Clients:</p> <p>1: 192.168.11.209</p> <p>Menu</p>	<p>Input:</p> <p>Voltage In (VAC): 127.0</p> <p>Frequency (Hertz): 60.0</p> <p>Menu</p>
	<p>Output:</p> <p>Voltage Out (VAC): 111.0</p> <p>Output Load (%): 0</p> <p>Menu</p>

Figure 3-25 Extra Browsing Options -PDA

WAP

Please input on WAP phone: “USHA address/WAP” or “USHA address/P”


Ex: [HTTP://192.168.11.100/WAP](http://192.168.11.100/WAP) or [HTTP://192.168.11.100/W](http://192.168.11.100/W) you can see the UPS status page. (Figure 3-26)



Figure 3-26 Extra Browsing Options -WAP

Chapter 4 Monitoring USHA/UPS via Java Monitor


USHA provides three real-time graphical user interfaces written in Java applet to give user an exceptional way to monitoring the UPS in LAN or WAN.

 **Java monitor:** Display the UPS key parameters in graphic representation.

 **UPS History Log monitor:** Display the UPS history log in graphic representation.

 **UPS Extended History Log monitor:** Display the UPS extended history log in graphic representation.

Java Monitor

By clicking the Java button  at the top right-hand side on the USHA Home Page, a Java Monitor will be open in a separate window. This monitor displays the UPS key parameters – AC input voltage, AC output voltage, UPS load, battery capacity, UPS temperatures, and Input frequency in graphic representation. In addition, this monitor has a function icon, a status bar that can display the current UPS status and an alarm window that can display the current UPS alarms.

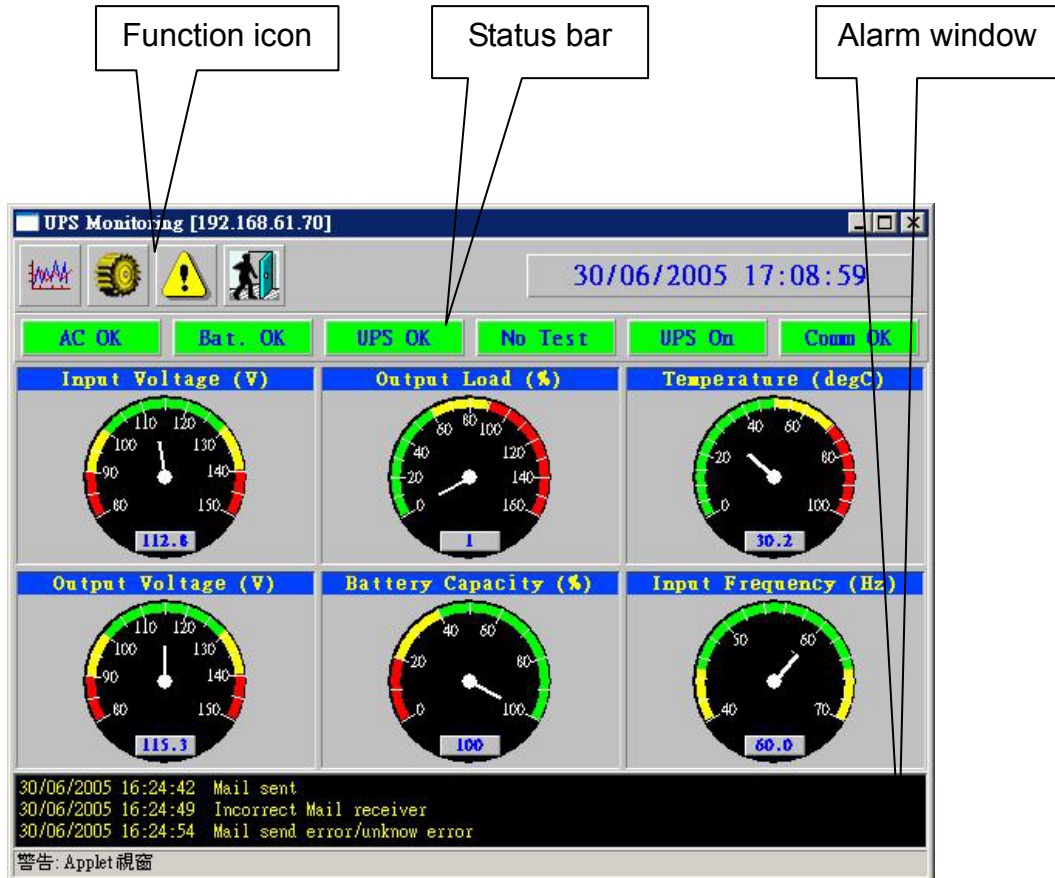


Figure 4-1 USHA Java Monitor

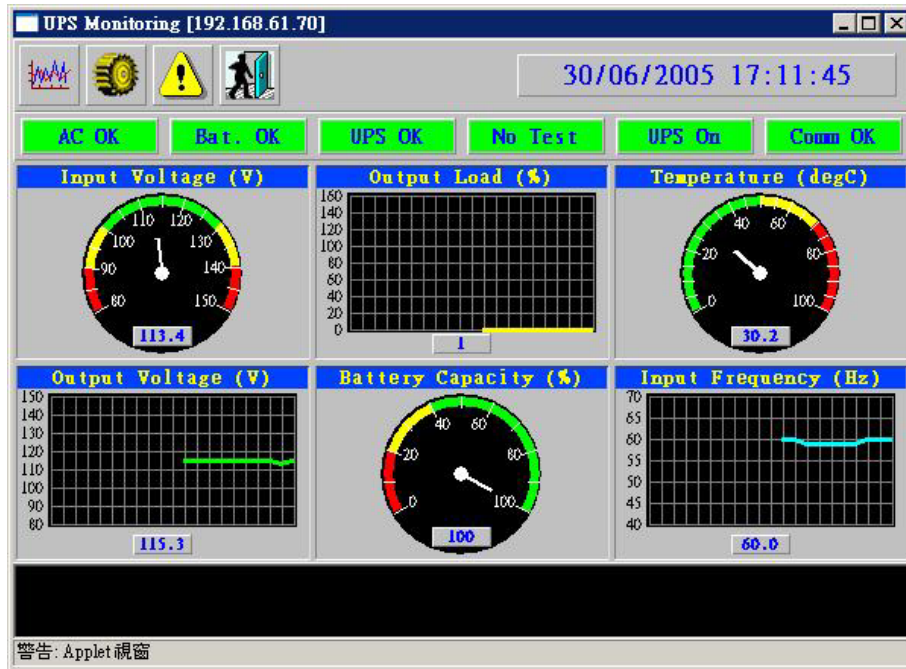


Figure 4-2 USHA Java Monitor



Display switch-Two different display styles (Gauge or Overall Chart presentation) of the UPS key parameters can be choosing from. This icon is used to switch the display from gauge presentation to chart presentation and vice versa.



Poll Rate- Configure the poll rate that the Java monitors to get the next value of the UPS parameters. Default is 5 seconds.



Event Message- Enable and disable display of the warning messages.



Exit – Exit from Java monitor.

Status Bar




Figure 4-3 Status Bar in Java Monitor

The status bar displays the current status of the UPS. Green colour represent that the UPS is in normal condition. If USHA receives a status change of the UPS, for example AC failure, the AC OK box will then change to red colour and displays AC fail represent that the UPS is in AC failure state.

Alarm Windows

When USHA receives a change in the status of it own or of the UPS, it displays a specific message in the *Alarm Window*. This type of status change message is an alarm. The *Alarm Window* displays the active alarms on the UPS and USHA.

UPS History Log Monitor

By clicking the Java button  at the top right-hand side on the USHA Home Page, a UPS History Log Monitor will be open in a separate window. This monitor displays the UPS history log in line graph. By default, all the UPS parameters will be display on the same graph. You can select any combination of the parameters to be displayed on the graph by checking the check box beside each parameter on the monitor screen and click the *Refresh* button.

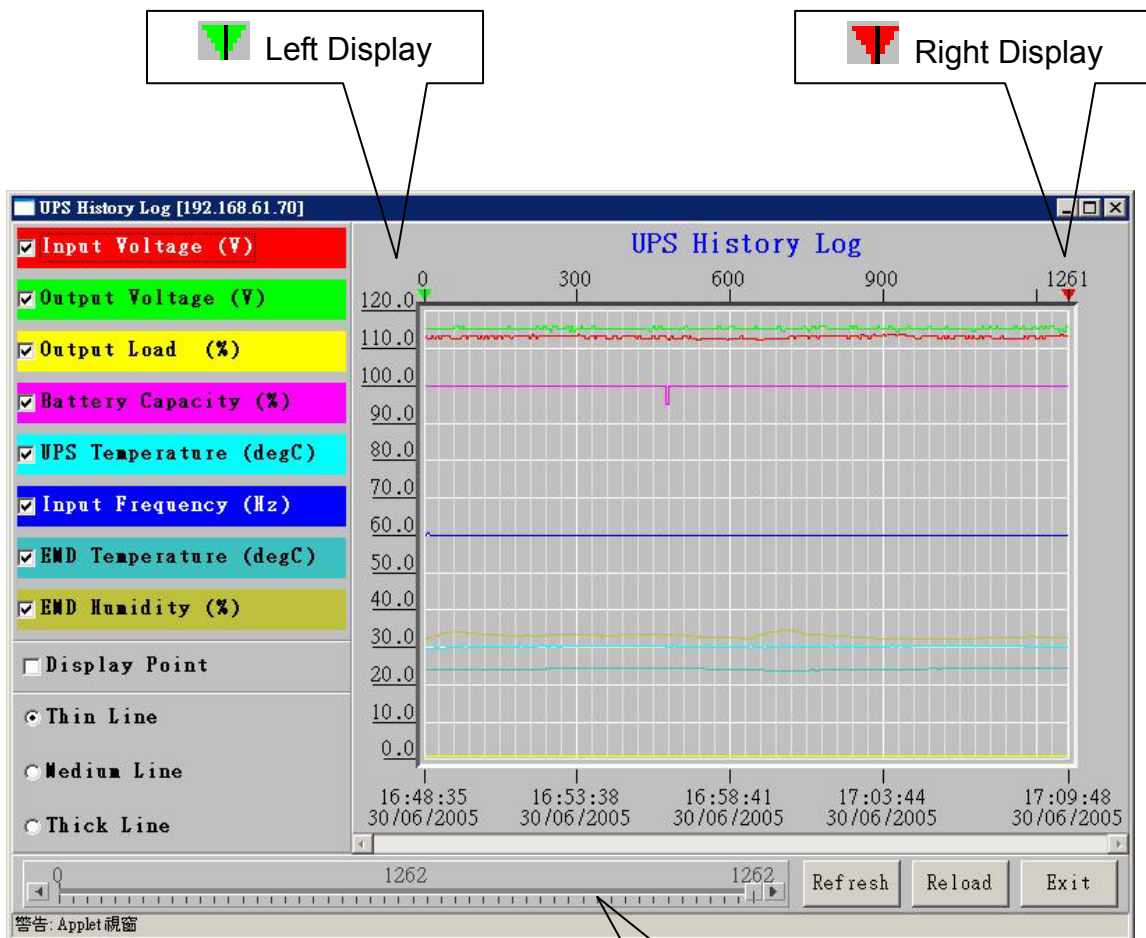


Figure 4-4 USHA UPS History Log Monitor

Right Margin Scroll Bar


Display Point: Display the log interval on the graph

Refresh: Click the *Refresh* button after configures any setting on *UPS History Log Monitor* to take effect

Reload: Update the UPS history log monitor and reset the right display margin

Exit: Close the *UPS History Log Monitor* window

UPS Extended History Log Monitor

By clicking the Java button  at the top right-hand side on the USHA Home Page, a UPS Extended History Log Monitor will be open in a separate window. This monitor displays the UPS extended history log in line graph. By default, all the UPS parameters will be display on the same graph. You can select any combination of the parameters to be displayed on the graph by checking the check box beside each parameter on the monitor screen and click the *Refresh* button.

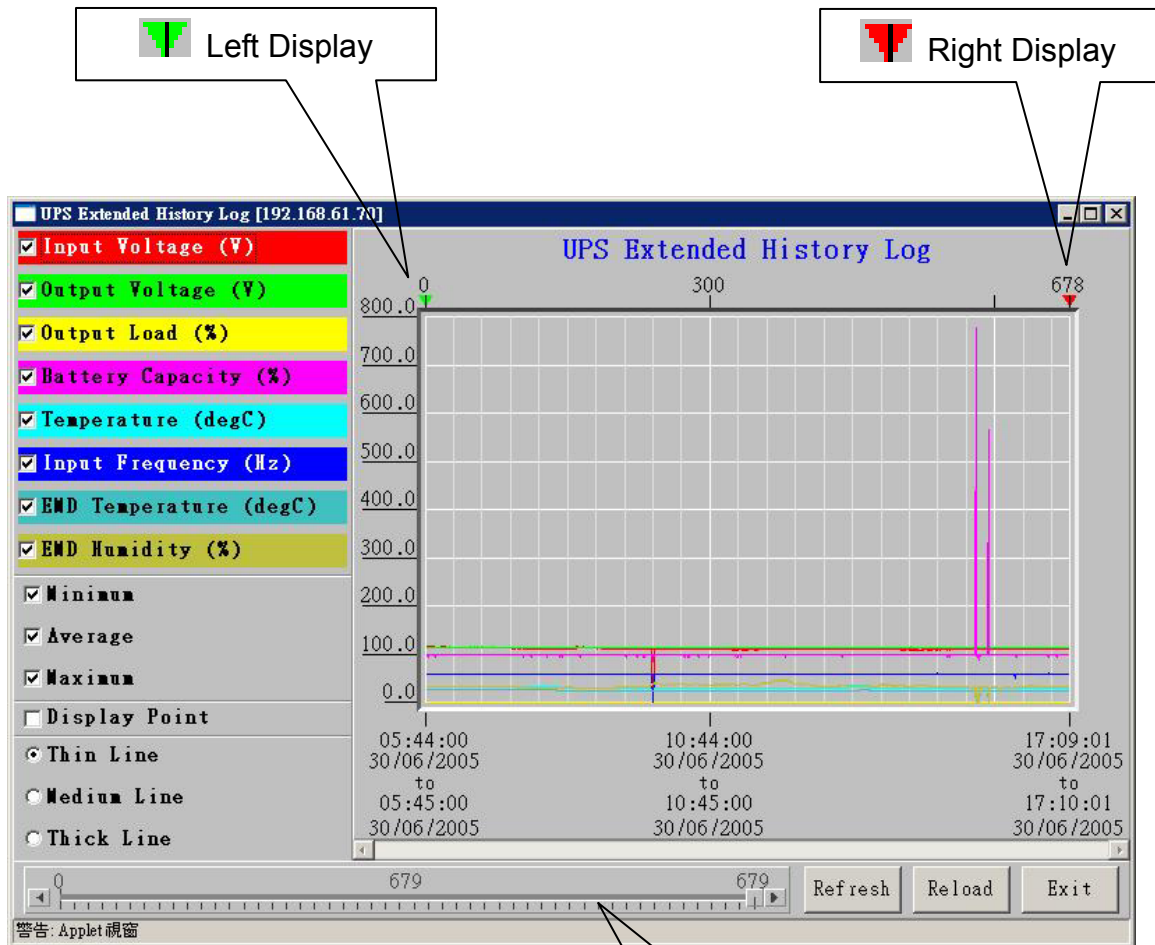


Figure 4-5 USHA UPS Extended History Log Monitor

Right Margin Scroll Bar

Display Point: Display the extended log interval on the graph

Refresh: Click the *Refresh* button after configures any setting on *UPS Extended History Log Monitor* to take effect

Reload: Update the UPS history log monitor and reset the right display margin

Exit: Close the *UPS Extended History Log Monitor* window

Chapter 5 Managing USHA/UPS via SNMP

Setting SNMP parameters in USHA

Before using USHA in SNMP environment, the IP address, gateway must be configured properly. See Chapter 2 for details.

SNMP Access Control Setting

USHA supports SNMP protocol. You can use SNMP NMS to manage UPS through the network. The IP address of the workstation must be entered in the USHA write access table to prevent unauthorized users from configuring USHA via HTTP or SNMP protocols.

Note: If you do not enter the IP address of the workstation to the *Access Control Table* (via Serial Port or Telnet) or the *SNMP/HTTP Access Control* (via Web Browser) in USHA, the SNMP NMS can only view the UPS status; it will not be able to perform any configuration on USHA/UPS. (See Pg. 19 *Access Control Table Setting* and Pg. 39 *SNMP/HTTP Access Control* for details.)

SNMP Trap Receivers Setting

See Pg. 40 SNMP Trap Receivers for details.

Set up SNMP Manager Software

1. Add the MIB file of USHA in the USHA CD-ROM to the MIB database of the SNMP manager.
2. Search for USHA in the network
3. To access the USHA SNMP agent, use 'public' for the GET community string and the Read/Write password (default is **admin**) for the SET community string.

GET Community string: *public*

SET Community string: *admin*

For more information, see the MIB file on the USHA CD-ROM.

Chapter 6 Shutdown Software

Install Shutdown Software in Windows 9x/NT/2000/XP/2003

1. Insert the USHA CD-ROM into the CD-ROM drive.
2. Run the “**SD_USHA Service_4.20.exe**” program on the CD-ROM.
3. A dialog box will be posted on the screen, type in the IP address of designated USHA, its client name and shutdown delay time (Figure 6-1). Click the *Def.* Button if you choose the client name as the workstation you are working on.



Figure 6-1 Set-up screen

4. Then press the ‘OK’ button.
5. After set-up is complete, the shutdown service will connect to the USHA automatically.

Note: The client local *Shutdown Delay* must not be greater than that of the *UPS Shutdown Delay* configured in USHA.

View the Connected Client from Web Browser

1. Run the Web Browser on any machine.
2. Browse the USHA IP address.
For example, browse <http://210.67.192.204>
3. Select *Client Table* from *UPS Monitoring* of the main menu and the list of the connected devices will be shown on the screen (Figure 6-2).

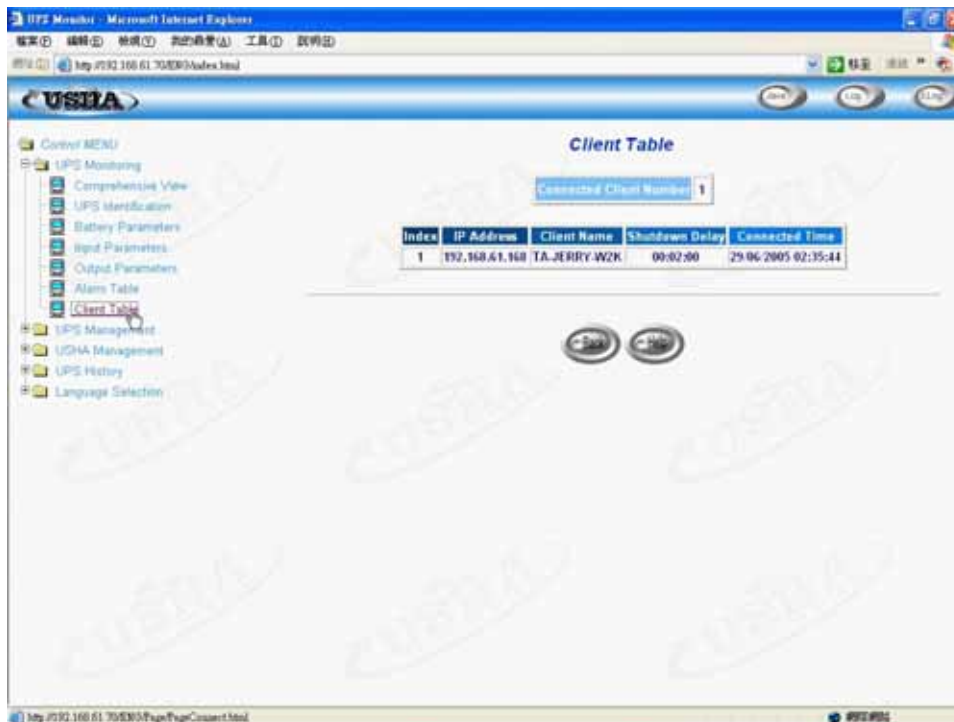


Figure 6-2 USHA connected (registered) devices list.

Shutdown Process in Windows 9x/ NT / 2000 / XP /2003

When USHA detects a power event, for example, AC power failure, the USHA will send the shutdown command to its connected clients. The clients will post a dialog box to notify the user that the system will be shut down (Figure 6-3). The user can select "Shutdown Now" to start the shutdown process or "Cancel" to cancel the shutdown process. The shutdown software will proceed with the shutdown process and the host or server will be shut down automatically if nothing is selected after the counter has counted down to zero.

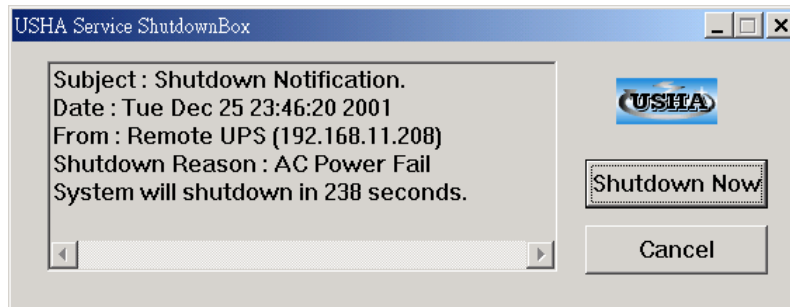







Figure 6-3 Shutdown-warning message.

There are five kinds of state for shutdown software.

1.  UPS Connection OK.
2.  Trying to locate UPS.
3.  Local machine is about to shut down.
4.  The service is suspended.
5.  Remote UPS is about to shut down or has shut down.

Uninstalling Shutdown Software

To uninstall the shutdown software, the following procedure should be followed.

1. Right mouse click the "battery" icon in the taskbar and select "Exit" to stop the shutdown service.
2. Select the "Add/Remove programs" icon from the Control Panel.
3. Select the "USHA service", and then click the "Add/ Remove" icon to remove the software.

Install Shutdown Software in SCO OpenServer UNIX

1. From a workstation running SCO OpenServer and login as a supervisor.
2. Insert the USHA CD-ROM into the CD-ROM drive.
3. If you have already mounted the CD-ROM drive, skip to step 5
4. Type `mount /dev/cd0 /mnt`
5. Select "Filesystems" -> "Filesystem Manager" -> "Mount" -> "Add Mount Configuration" -> "Local"
6. Select a "Device File" and enter the name of the "Mount Point" (Ex: /mnt). Then select "OK"
7. Copy the shutdown programs into the directory and extract the programs to the directory of `./uGuard`

```
# mkdir uGuard
# cp /mnt/client/SCO/SD_SCO_4_20_USHA.tar /uGuard/uGuard.tar
# cd /uGuard
# tar xvf uGuard.tar
```
8. Type `./install.sh` to proceed with the installation procedure.


```
# ./install.sh
```
9. The shell command will invoke the 'vi `uGuard.conf`', the user must modify the remote host value, host name and local delay (Figure 6-4). After saving the file, the installation is complete.

```
;Sample configuration file of uGuard
;RemoteHostIP: The IP address of remote UPS.
;Set the address to default IP (0.0.0.0) if no USHA Service
is connected.
RemoteHostIP = 0.0.0.0
;ClientName:The name of the this machine[optional].
;      Free form for this parameter.
;      Maximum 28 bytes long.
ClientName = Mainserver

;WarningBeep status:
WarningBeep = 0
;1 = TRUE; 0 = FALSE(default)

;ShutdownDelay: The local delay time before shutdown.
;      Range from 0 to 65536 seconds.
ShutdownDelay = 120

;Special shutdown script
ShutdownScript = /usr/foo
;ForceShutdownDelay: The delay time for executing
shutdown program
;      Range from 0 to 65536 seconds.
ForceShutdownDelay = 120

;Check AC Fail event
;1 = TRUE; 0 = FALSE(default)
AcFail = 0
```

```
;Check Battery Low event  
;1 = TRUE; 0 = FALSE(default)  
BatteryLow = 0  
  
;Check UPS Overload event  
;1 = TRUE; 0 = FALSE(default)  
UPSOverload = 0  
  
;Check UPS Over Temperature event  
;1 = TRUE; 0 = FALSE(default)  
OverTemp = 0  
  
;Special Weekly and Special Day Schedule shutdown  
;1 = TRUE; 0 = FALSE(default)  
WeekDaySched = 0
```

Figure 6-4 Modifying the uGuard.conf

**Your server will receive the warning message but won't shutdown
If AcFail=0(default value). It will safety shutdown if AcFail=1.*

uGuard parameters description

To run or view the uGuard parameters, key in the following command:

```
# cd /uGuard  
# uGuard -h
```

uGuard – USHA Service, Formal Release 4.20
Copyright © 2005 Ingrasys Computer Technology Inc.
All rights reserved

Usage: uGuard [-h][-v][-sS][-uU][-d][-r][-p][-l][-e][-gn]

- h:** This manual page.
- v:** Show revision information
- s:** Start the daemon now
- S:** Start the daemon at next boot up time
- u:** Unload this daemon
- U:** Unload this daemon, don't restart at next boot time
- d:** Suspend program
- r:** Resume this daemon
- p:** Probe the daemon status
- l:** List daemon configuration
- e:** Modify daemon configuration
- b:** Enable Beep.
- o:** Disable Beep, default.
- i :** Ignor shutdown request.
- t :** Enable shutdown request, default.
- gn:** Log level (logfile is /var/adm/uGuard.log)
n = 0, No log activities
n = 1, Log start/ stop/ warning activities

Figure 6-5 The uGuard -h command.

Deleting uGuard

1. Unload uGuard

```
#cd /etc  
#uGuard -U
```

2. Remove uGuard files

```
#cd /etc  
#rm uGuard  
#rm uGuard.conf  
#cd /etc/rc.d/init.d  
#rm ug_usha.sh  
#rm /usr/adm/uGuard.log
```

Install Shutdown Software in Linux kernel 2.0.x

The shutdown software supplied from the USHA CD-ROM for the Linux can be install on the Linux operating system with kernel version higher than 2.0.x. To be able to execute the shutdown program correctly, please check the following procedures:

1. From a workstation running Linux kernel 2.0.x and login as a supervisor.
2. Insert the USHA CD-ROM into the CD-ROM drive.
3. If you have already mounted the CD-ROM drive, skip to step 7
4. Type ***mount /dev/cdrom***
5. Change the directory to the "Mount Point" (Ex: /mnt/cdrom/CLIENT/Linux).
6. Copy the shutdown programs into the directory and extract the programs to the directory of ./uGuard

```
# cd /mnt/cdrom/CLIENT/Linux
# mkdir /uGuard
# cp ./SD_Linux_4_20_USHA.tar /uGuard/uGuard.tar
# cd /uGuard
# tar xvf uGuard.tar
```

7. Type “./install.sh” to proceed with the installation procedure.

```
# ./install.sh
```

The shell command will invoke the 'vi uGuard.conf', the user must modify the remote host value, host name and local delay (Figure 6-4). After saving the file, the installation is complete.

Follow the general indications of the chapter **Using Shutdown Software in SCO UNIX**.

Install Shutdown Client in Novell Netware

1. Insert the USHA CD-ROM into the CD-ROM drive and copy file to C:\. It has two files (NOVSHUT.NLM and readme.txt) when uncompress zip file. Put novshut.nlm to c:\ after uncompress file over.

```
C:\>COPY D:\CLIENT\NOVELL\ SHUTDOWN3.00.ZIP C:
```

2. Change the directory into "NWSERVER".

```
C:\>cd nwserver
```

```
C:\nwserver>_
```

3. Type "server" on C:\NWSERVER\ into system console

```
C:\>cd nwserver
```

```
C:\NWSERVER>server
```

4. Type "load install" on Novell Netware (If you're Netware6, please enter load nwconfig).

```
Auto-loading module NWSNUT.NLM
NetWare NLM Utility User Interface
Version 4.16   July 1, 1996
(c) Copyright 1989-1996, Novell, Inc. All rights reserved.
Debug symbol information for NOVSHUT.NLM loaded
Total server memory: 30,271 Kilobytes

Novell NetWare 4.11 August 22, 1996
(C) Copyright 1983-1996 Novell Inc.
All Rights Reserved.
Patent Pending - Novell Inc.

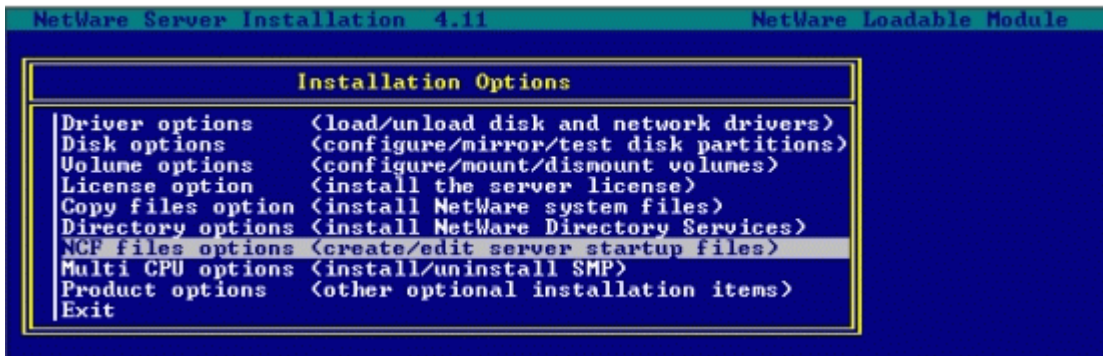
Thursday, December 26, 2002  3:55:57 pm TST

OEM Identification: 1
Maximum Number of License Connections: 100
Installed Licenses:
Serial Number  Connections  License Type  Version  Expiration
60001983      100           WEB/CONN     4.11     NONE

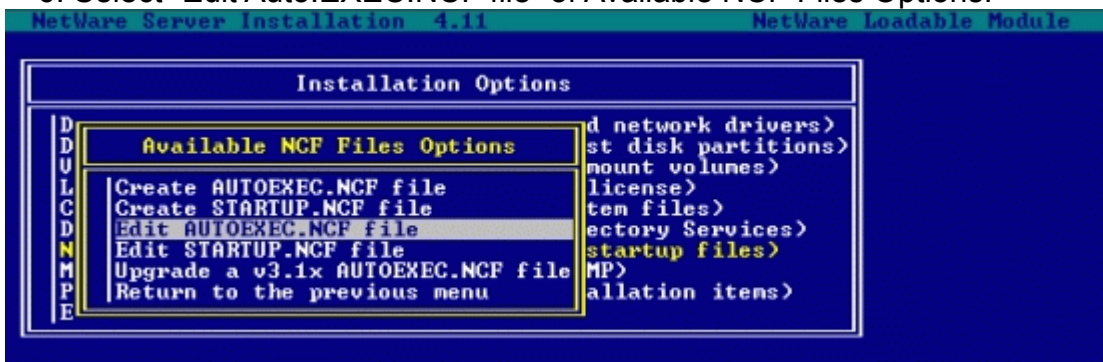
12-26-02  3:56:50 pm:  RSPX-4.10-28
Remote console connection granted for 00000002:004005A6512D
IPDQA-NW411:load install
```

UPS SNMP HTTP AGENT

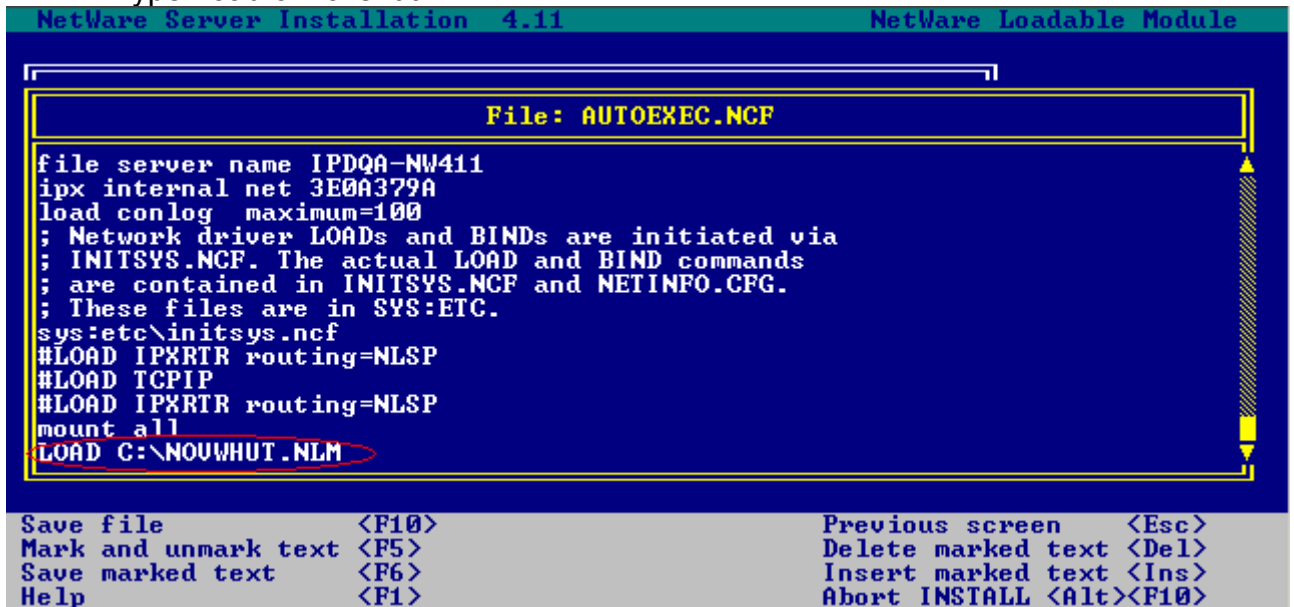
5. Select "NCF files options (create server startup files)" of Installation Options table.



6. Select "Edit Auto.EXEC.NCF file" of Available NCF Files Options.

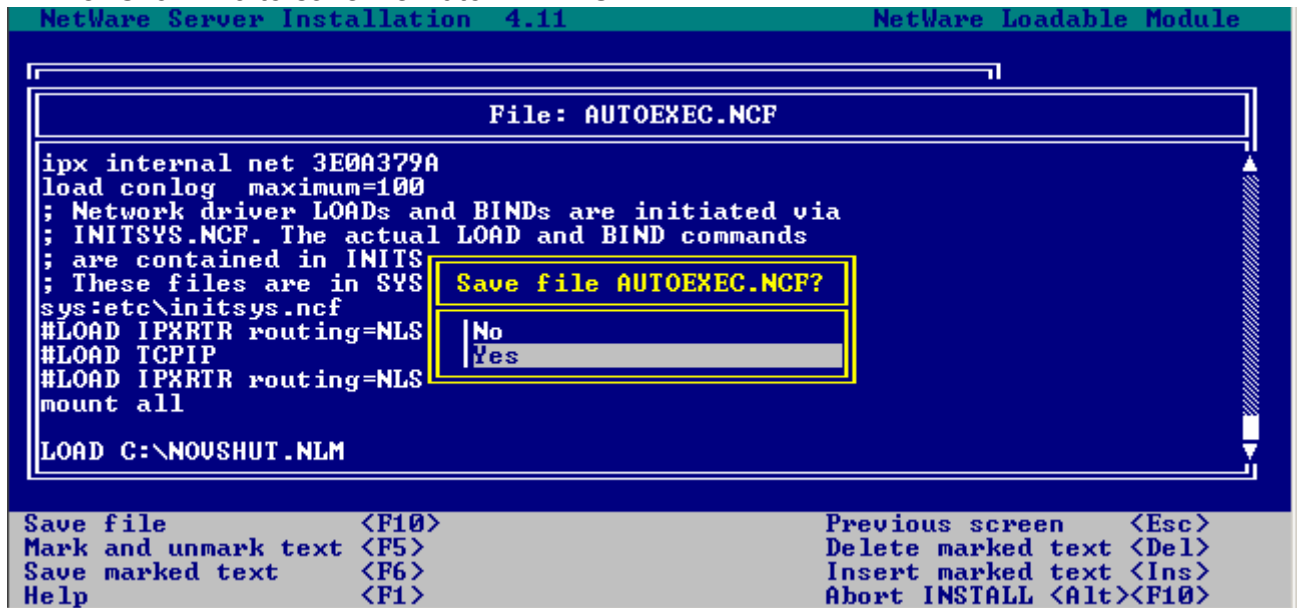


7. Type "load c:\novshut.nlm".



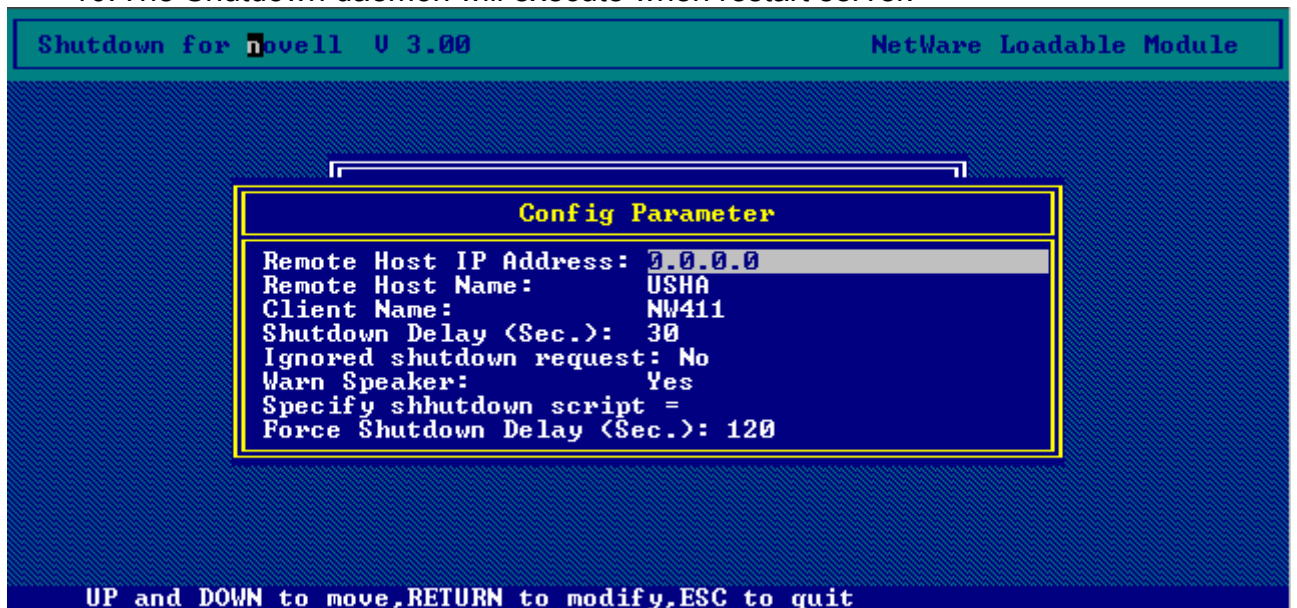
UPS SNMP HTTP AGENT

8. Click F10 to save file Auto.EXE.NCF.

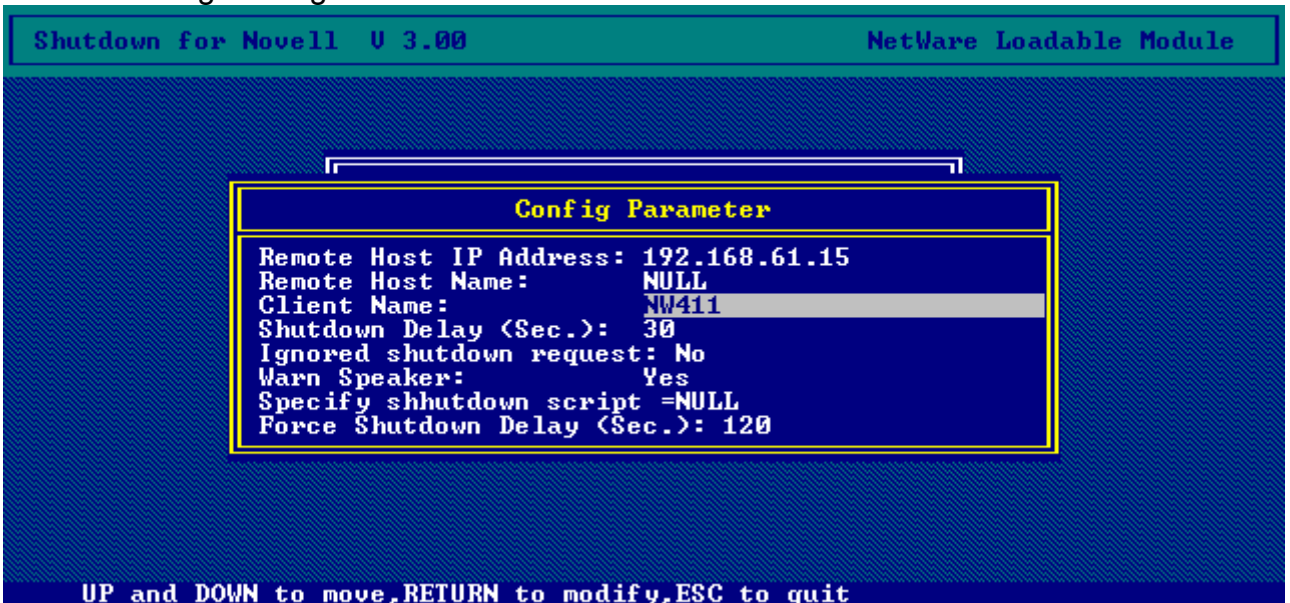


9. Get server down and exit.
>Type "down" then type "exit" command

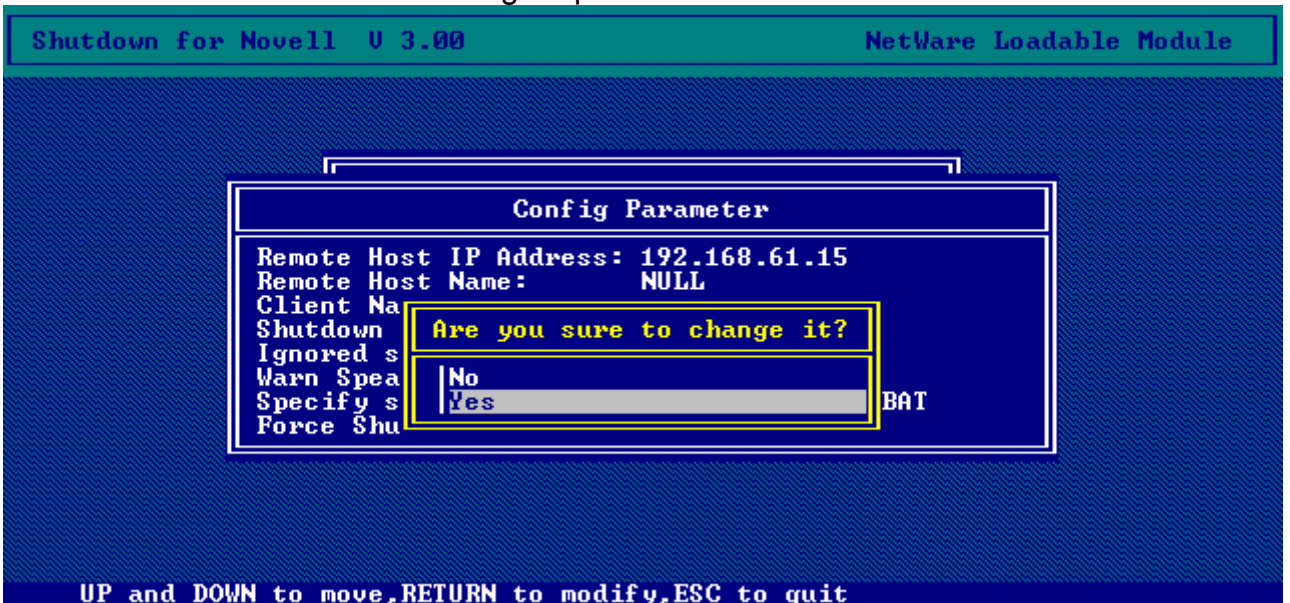
10. The Shutdown daemon will execute when restart server.



11. Setting "Config Parameter".



12. Press "ALT + F10" to configure parameters.



Note: This version only support Class C IP Address.

Install Shutdown Software in Solaris

1. From a workstation running Solaris and login as a administrator.
2. Insert the USHA CD-ROM into the CD-ROM drive.
3. Mount CD-ROM
4. Create new directory. (mkdir uGuard)
5. Copy the shutdown programs into the directory and extract the programs to the directory of ./uGuard, then uncompress it.

```
bash-2.05a# tar xvf SD_HP-UX_4_20_USHA.tar
x install.sh, 436 bytes, 1 media blocks.
x instaltime, 53150 bytes, 104 media blocks.
x uGuard, 128552 bytes, 252 media blocks.
x unins.sh, 478 bytes, 1 media blocks.
```

6. Type “./install.sh” to proceed with the installation procedure.

```
bash-2.05# ./install.sh_
```

7. The shell command will invoke the 'vi uGuard.conf', the user must modify the remote host value, host name and local delay. After saving the file, the installation is complete.

```
Sample configuration file of uGuard
;RemoteHostIP: The IP address of remote UPS.
;Set the address to default IP (0.0.0.0) if no USHA Service is connected.
RemoteHostIP = 0.0.0.0

;ClientName:The name of the this machine[optional].
;      Free form for this parameter.
;      Maximum 28 bytes long.
ClientName = Mainserver

;WarningBeep status:
WarningBeep = 0
;1 = TRUE; 0 = FALSE(default)

;ShutdownDelay: The local delay time before shutdown.
;      Range from 0 to 65536 seconds.
ShutdownDelay = 120

;Special shutdown script
ShutdownScript = /usr/foo
;ForceShutdownDelay: The delay time for executing shutdown program
;      Range from 0 to 65536 seconds.
ForceShutdownDelay = 120

;Check AC Fail event
;1 = TRUE; 0 = FALSE(default)
AcFail = 0

;Check Battery Low event
;1 = TRUE; 0 = FALSE(default)
BatteryLow = 0

;Check UPS Overload event
;1 = TRUE; 0 = FALSE(default)
UPSOverload = 0

;Check UPS Over Temperature event
;1 = TRUE; 0 = FALSE(default)
OverTemp = 0

;Special Weekly and Special Day Schedule shutdown
;1 = TRUE; 0 = FALSE(default)
WeekDaySched = 0
"/etc/uGuard.conf" [Last line is not complete] 55 lines, 1307 characters
```

UPS SNMP HTTP AGENT

*Your server will receive the warning message but won't shutdown
If AcFail=0(default value). It will safety shutdown if AcFail=1.

8. Type "y" command to start shutdown daemon when setting over.

```
Do you want to start the daemon now ?[y]
y

uGuard -- USHA Service, Formal Release V4.201
Copyright (C) 2005 Ingrasys Computer Inc.
All rights reserved

uGuard is started.

uGuard -- USHA Service, Formal Release V4.201
Copyright (C) 2005 Ingrasys Computer Inc.
All rights reserved

uGuard will start at next boot up time.
```

uGuard parameters description

```
Copyright (C) 2005 Ingrasys Computer Inc.
All rights reserved

Usage : uGuard [-h] [-v] [-sS] [-uU] [-d] [-r] [-p] [-l] [-e] [-bo] [-it] [-gn]
  -h : This manual page .
  -v : Show revision information.
  -s : Start the program now.
  -S : Start the program at next boot up time, but not start immediately.
  -u : Unload the program now.
  -U : Unload the program and don*t start at next boot up time,
      but not unload immediately.
  -d : Suspend program.
  -r : Resume program.
  -p : Probe the status.
  -l : List configurations.
  -e : Modify configurations.
  -b : Enable Beep.
  -o : Disable Beep, default.
  -i : Ignore shutdown request.
  -t : Enable shutdown request,default.
  -gn : Log level(Default = 1;log file is /var/uGuard.log).
       n = 0, No log activities .
       n = 1, Log start/stop/warning activities.
```

UPS SNMP HTTP AGENT

1. Execute “uGuard -d” command to suspend shutdown daemon.

```
bash-2.05a# /etc/uGuard -d

uGuard -- USHA Service, Formal Release V4.2003
Copyright (C) 2005 Ingrasys Computer Inc.
All rights reserved

uGuard is suspended.
```

2. Execute “uGuard -r” command to resume shutdown daemon.

```
bash-2.05a# /etc/uGuard -r

uGuard -- USHA Service, Formal Release V4.2003
Copyright (C) 2005 Ingrasys Computer Inc.
All rights reserved

uGuard is resumed.
```

3. Execute “uGuard -p” command to probe the shutdown daemon status.

```
bash-2.05a# /etc/uGuard -p

uGuard -- USHA Service, Formal Release V4.2003
Copyright (C) 2005 Ingrasys Computer Inc.
All rights reserved

Application Status : Normal
Connection Status : Host <USHA> (192.168.61.70) connected
USHA Status : Normal
Beep : Disable
Shutdown : Enable
Shutdown Activity : None
```

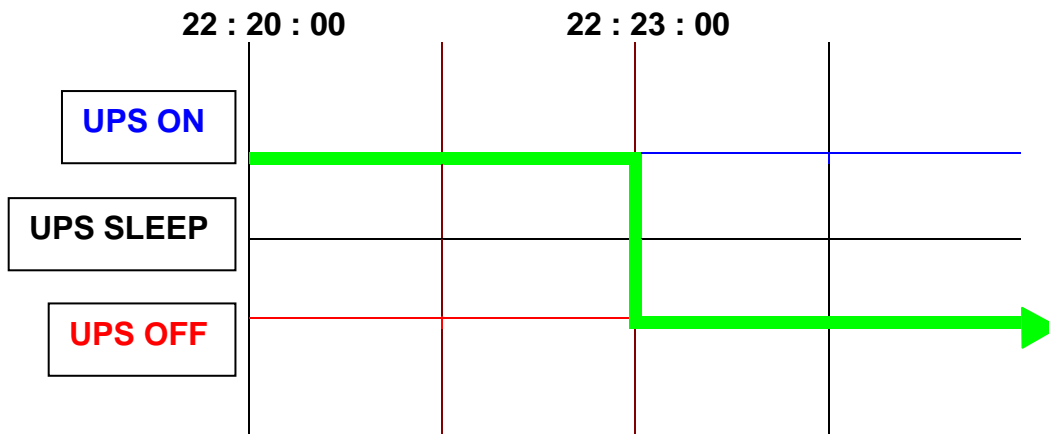
Chapter 7 UPS Power Management

One of the most significant feature of the USHA is that it can deal with almost all the power crisis confront to a UPS and protect your valuable information reside in your server from being damage due to the abrupt shutdown of the server. In addition, USHA can help corporate to cut the expensive energy bill by shutdown all the computer workstations in the office automatically during holiday or after office-hour using the *Weekly Shutdown* schedule or *Special Day* schedule. These schedules can also assist MIS staff to prevent unauthorised access to the server during the after office-hour time.

Turn off UPS Manually

When there is a need to turn off the UPS manually, go to the *UPS Control* in the *UPS Management* menu. Login as an Administrator. Select the radial button beside *Turn Off UPS* and click the *Send* button.

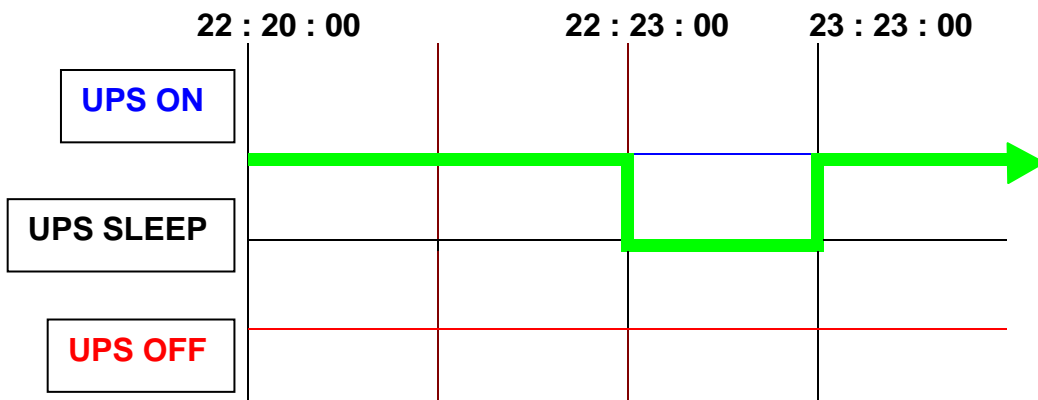
UPS Shutdown Delay (Sec): 180 (default value)
 Turn off the UPS manually at 22:20:00



Set UPS To Sleep Mode Manually

When there is a need to set the UPS to sleep mode manually, go to the *UPS Control* in the *UPS Management* menu. Login as an Administrator. Select the radial button beside *UPS Sleep* and click the *Send* button.

UPS Shutdown Delay (Sec): 180 (default value)
UPS Sleep Time (Min): 60 (default value)
Set UPS to sleep manually at 22:20:00

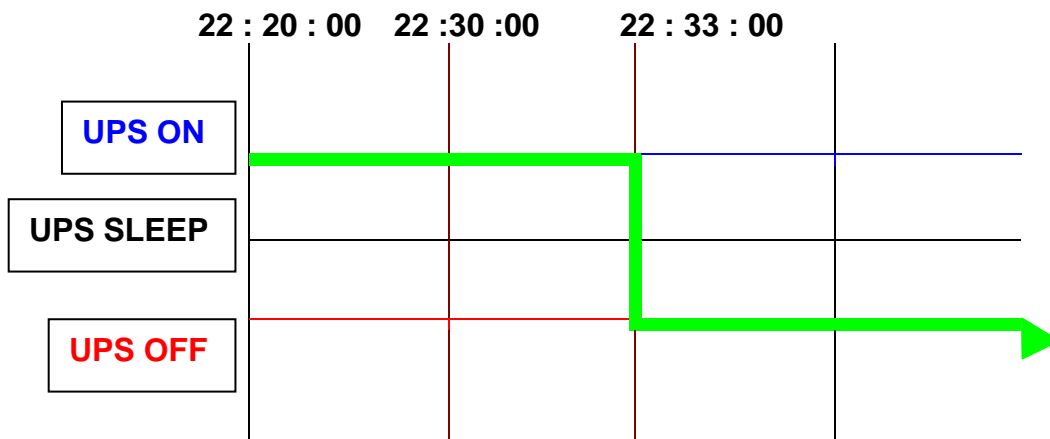


UPS Shutdown during Power Crisis

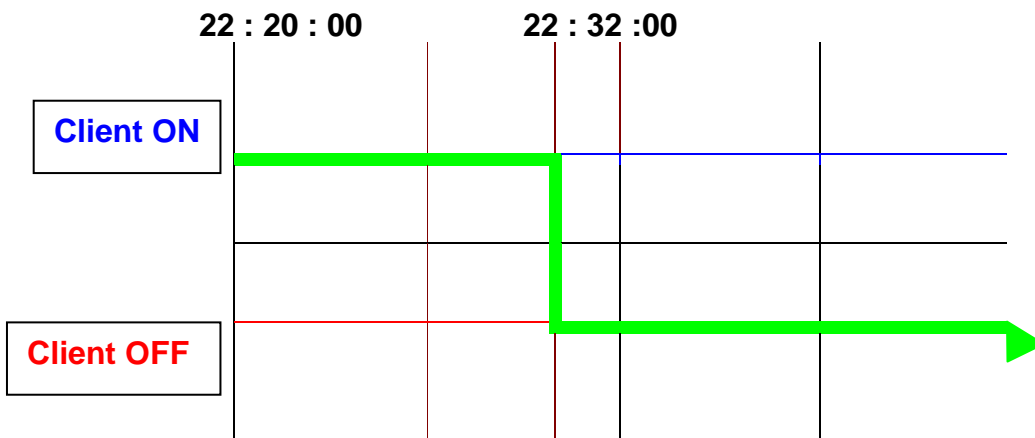
USHA responds to seven different kinds of UPS shutdown events and it will take appropriate action to protect your information in your server. Go to the *UPS Shutdown* in the *UPS Management* menu. Logging in as an Administrator. Configure the UPS Shutdown table to meet your need. Click the *Set Value* button when finish. (See Pg. 33UPS Shutdown for details)

Status:	UPS Turn Off	(default value)
Delay (Min):	10	(default value)
1 st Warning (Sec)	30	(default value)
Warning Interval (sec)	30	(default value)

UPS Shutdown Delay (Sec): 180 (default value)
 AC failed at 22:20:00



Client's local shutdown delay (Sec):120 (default value)



Managing the UPS Shutdown Schedule

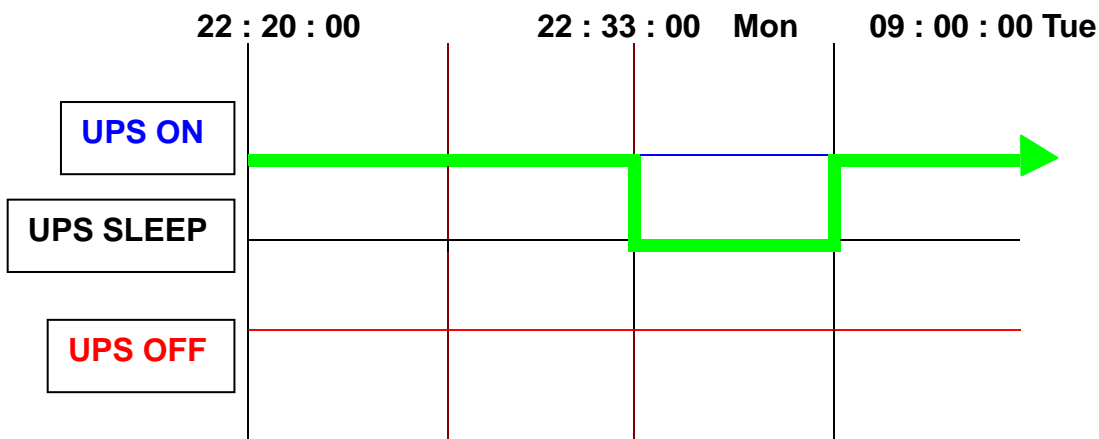
USHA supports two kinds of shutdown schedule – (1) **Weekly Schedule**; (2) **Special Day Schedule**.

Note: Before managing the UPS Shutdown Schedule, please make sure that the Date and Time configured in USHA is correct.

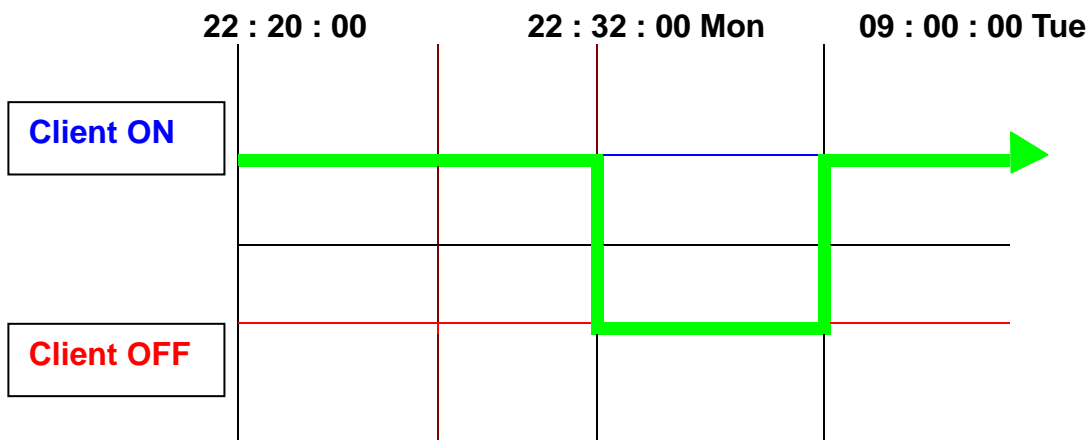
Scenario

Status: UPS Turn Off (default value)
 Delay (Min): 10 (default value)
 1st Warning (Sec): 0 (default value)
 Warning Interval (sec): 60 (default value)

UPS Shutdown Delay (Sec): 180 (default value)
 Shutdown day & time: Monday 22:20:00
 Restart day & time: Tuesday 09:00:00



Client's local shutdown delay (Sec): 120 (default value)



Appendix A Technical Information

Technical Information about USHA Pro II

Features

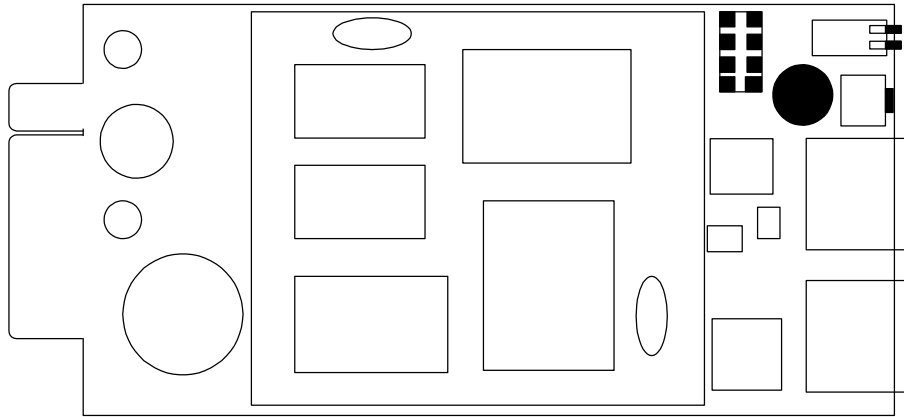
- Configuration from HTTP Web Browser, Telnet and serial port console.
- Management through SNMP manager and HTTP Web Browser.
- Support UPS MIB (RFC1628) and USHA MIB
- Provide shutdown programs for multiple Operating System
- Upgrade from TFTP server and serial port.
- UPS control through scheduling.
- History, Event and Statistic log file.
- SNMP alarms detection.
- Report UPS Input, Output, Temperature, Load and Capacity through Java Monitor
- UPS shutdown warning broadcast through shutdown programs
- Support internal Real Time Clock (RTC).

Technical Specification

CPU	16-bits AC1105 Fast Ethernet RISC Processor Phoenix Kernel
Memory	2MB (1Mbit x16) TFBGA Flash ROM 2MB (1Mbit x16) SDRAM
Serial Communication	Two UART Channels, one RJ-45, one Gold finger.
LAN Controller	10/100 Mbits Ethernet controller
Network Connection	10/100 TX RJ-45 jack connector
RTC	Real time clock
UPS Protocol	Phoenixtec UPS communication protocol v3.3 Santak UPS communication protocol SEC UPS communication protocol V2.6 Delta UPS communication protocol V1.43
Network Protocol	SNMP over UDP/IP HTTP over TCP/IP ARP, TFTP, SSH, SSL , NTP and ICMP
Supported MIB	UPS MIB (RFC1628) USHA MIB
Operating Temperature	0 ~ 40° C
Operating Humidity	10 ~ 80 %
Power Input	8-15V DC
Power Consumption	3.0 Watts Maximum
Size	130mm x 60mm x 18.2mm (L x W x H)
Weight	90gm
Regulatory compliance	FCC class B CE class B

Board Layout and Pin Assignment

Board layout

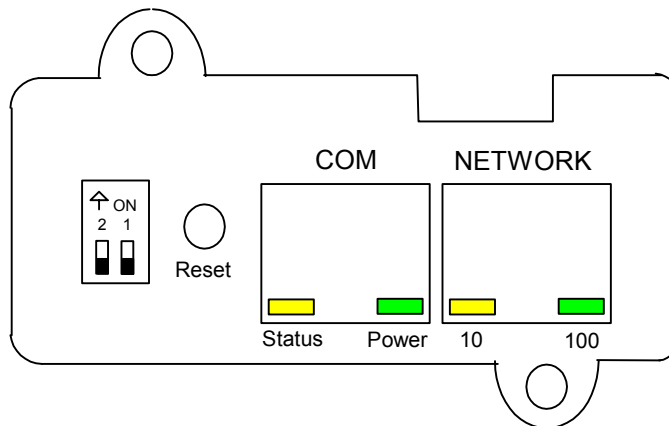


Pin assignment

Bottom Side		Component Side	
Pin 1	GND	Pin 2	DC (8-15V)
Pin 3	Txd→UPS	Pin 4	Rxd←UPS
Pin 5	NC	Pin 6	NC
Pin 7	NC	Pin 8	Short to pin 10
Pin 9	GND	Pin 10	Short to pin 8
Pin 11~25	NC	Pin 12~26	NC

Switch Description

Component layout of the panel



UPS SNMP HTTP AGENT

DIP-switch definition

No.	SW1	SW2	Function Mode
1	ON	ON	Manufacture Diagnostic Mode
2	ON	OFF	Serial upgrade mode
3	OFF	ON	Reserved
4	OFF	OFF	Operating Mode

LED Indicator

LED definition

No.	Port	Green LED	Amber LED	Function
1	Network	Flashing(1sec)	OFF	Ethernet 100 Traffic
2		OFF	Flashing(1sec)	Ethernet 10 Traffic
3		OFF	OFF	Ethernet disconnect
4	COM	ON	Flashing(1~3sec)	RS-232 Port Active
5		OFF	Flashing(1sec)	Serial Upgrade Mode
6		Two LED cross Flashing	Two LED cross Flashing	Auto Diagnostic Mode
7		ON	ON	Hardware Error

Technical Information about USHA ProE

Features

- Configuration from HTTP Web Browser, Telnet and serial port, if supported by the UPS.
- Management through SNMP manager and HTTP Web Browser.
- Support UPS MIB (RFC1628) and USHA MIB
- Provide shutdown programs for multiple Operating System
- Upgrade from TFTP server and serial port.
- UPS control through scheduling.
- History, Event and Statistic log file.
- SNMP alarms detection.
- Report UPS Input, Output, Temperature, Load and Capacity through Java Monitor
- UPS shutdown warning broadcast through HTTP
- Support Real Time Clock (RTC).

Technical Specification

CPU	16-bits AC1105 Fast Ethernet RISC Processor Phoenix Kernel
Memory	2MB (1Mbit x16) TFBGA Flash ROM 2MB (1Mbit x16) SDRAM
Serial Communication	Two UART Channels, one RJ-45, one Gold finger.
LAN Controller	10/100 Mbits Ethernet controller
Network Connection	10/100 TX RJ-45 jack connector
RTC	Real time clock
UPS Protocol	Phoenixtec UPS communication protocol v3.3 Santak UPS communication protocol SEC UPS communication protocol V2.6 Delta UPS communication protocol V1.43
Network Protocol	SNMP over UDP/IP HTTP over TCP/IP ARP, TFTP, SSH, SSL , NTP and ICMP
Supported MIB	UPS MIB (RFC1628) USHA MIB
Operating Temperature	0 ~ 40° C
Operating Humidity	10 ~ 80 %
Power Input	8-15V DC
Power Consumption	3.0 Watts Maximum
Size	137 mm x 87 mm x 29mm (L x W x H)
Weight	150gm
Regulatory compliance	FCC class B CE class B

Diagram of Front Panel

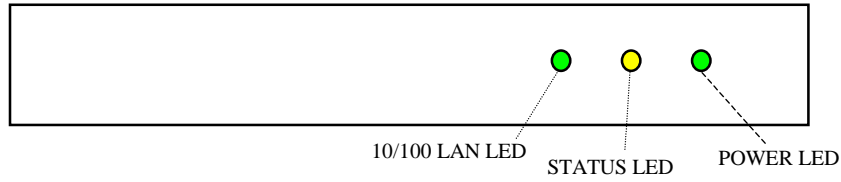
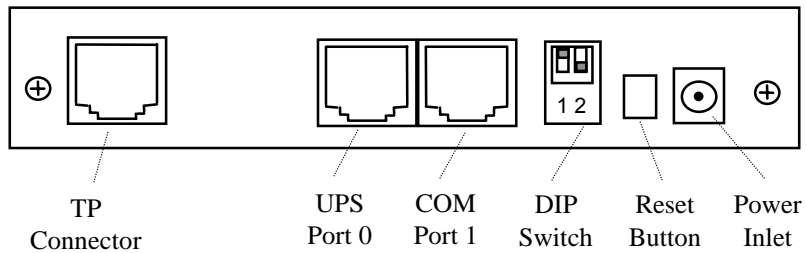


Diagram of Back Panel



Switch Description

DIP-switch definition

No.	SW1	SW2	Function Mode
1	ON	ON	Manufacture Diagnostic Mode
2	ON	OFF	Serial Upgrade Mode
3	OFF	ON	Reserved
4	OFF	OFF	Operating Mode

LED Indicator

LED definition

Type	Green LED	Yellow LED	Function
10/100 LAN	Flashing	OFF	Ethernet 100 Traffic
	OFF	Flashing	Ethernet 10 Traffic
	OFF	OFF	Ethernet disconnect
	ON	OFF	100 Ready
	OFF	ON	10 Ready
Type	Power	Status	Function
Status & Power	ON	-	Power ON
	-	Flashing	RS-232 Port Activity
	OFF	Flashing	Serial Upgrade Mode
	Two LED cross Flashing	Two LED cross Flashing	Auto Diagnostic Mode
	ON	ON	Hardware Error

Serial Cable Definition

The Cable for Serial Port 0 of USHA ProE II (UPS 253 cable)

RJ45	DB9 (Male)	RJ45 Description
1	-	Ready to Send
3	3	Transmitted Data
4	5	Signal Ground
5	Case GND	Chassis Ground
6	2	Received Data
8	-	Clear to Send

Note: Pins 2 and 7 of the RJ45 connector are connected internally.

The Cable for Serial Port 0 of USHA ProE II (UPS 679 cable)

RJ45	DB9 (Male)	RJ45 Description
1	-	Ready to Send
3	6	Transmitted Data
4	7	Signal Ground
5	Case GND	Chassis Ground
6	9	Received Data
8	-	Clear to Send

Note: Pins 2 and 7 of the RJ45 connector are connected internally.

The Cable for Serial Port 1 of USHA ProE II (PC cable)

RJ45	DB9 (Female)	RJ45 Description
1	-	Not connected
3	2	Received Data from PC
4	5	Signal Ground
5	Case GND	Chassis Ground
6	3	Transmitted Data to PC
8	-	Not connected

Note: Pins 2 and 7 of the RJ45 connector are connected internally.

Technical Information about mini USHA

Features

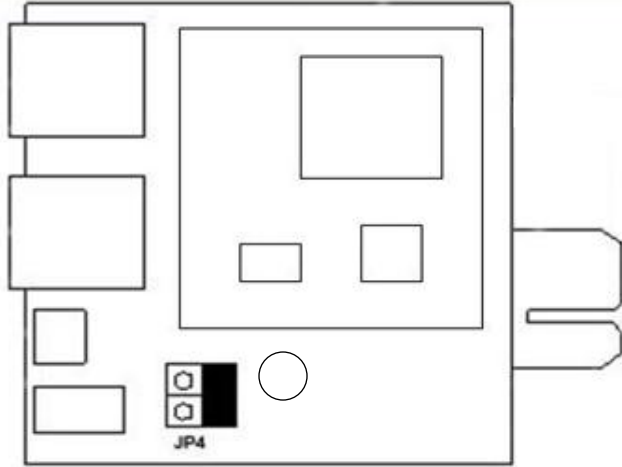
- Configuration from HTTP Web Browser, Telnet and serial port console.
- Management through SNMP manager and HTTP Web Browser.
- Support UPS MIB (RFC1628) and USHA MIB
- Provide shutdown programs for multiple Operating System
- Upgrade from TFTP server and serial port.
- UPS control through scheduling.
- History, Event and Statistic log file.
- SNMP alarms detection.
- Report UPS Input, Output, Temperature, Load and Capacity through Java Monitor
- UPS shutdown warning broadcast through shutdown programs
- Support internal Real Time Clock (RTC).

Technical Specification

CPU	16-bits AC1106 Fast Ethernet RISC Processor Phoenix Kernel
Memory	2MB (1Mbit x16) TFBGA Flash ROM 2MB (1Mbit x16) SDRAM
Serial Communication	Two UART Channels, one RJ-45, one Gold finger.
LAN Controller	10/100 Mbits Ethernet controller
Network Connection	10/100 TX RJ-45 jack connector
RTC	Real time clock
UPS Protocol	Phoenixtec UPS communication protocol v3.3 Santak UPS communication protocol SEC UPS communication protocol V2.6 Delta UPS communication protocol V1.43
Network Protocol	SNMP over UDP/IP HTTP over TCP/IP ARP, TFTP, SSH, SSL , NTP and ICMP
Supported MIB	UPS MIB (RFC1628) USHA MIB
Operating Temperature	10° C ~ 40° C
Operating Humidity	20 ~ 80 %
Power Input	+8V ~ +16VDC
Power Consumption	8V ~ 16V<3W
Size	65.8mm x 60mm x 15.2mm (L x W x H)
Weight	40gm
Regulatory compliance	FCC class B CE class B

Board Layout and Pin Assignment

Board layout

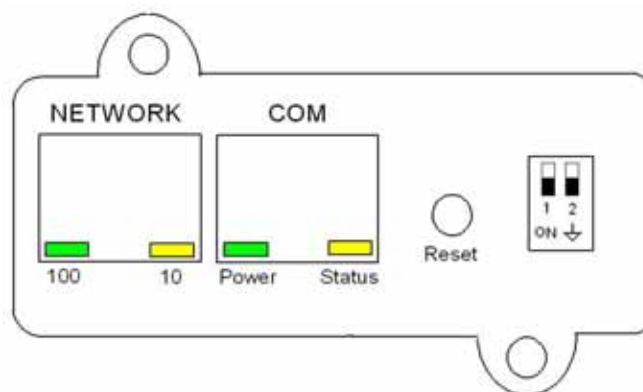


Pin assignment

Bottom Side		Component Side	
Pin 1	GND	Pin 2	UPSVCC
Pin 3	Txd→UPS	Pin 4	Rxd←UPS
Pin 5	NC	Pin 6	NC
Pin 7	NC	Pin 8	Detect+
Pin 9	GND	Pin 10	Detect-

Switch Description

Component layout of the panel



UPS SNMP HTTP AGENT

DIP-switch definition

No.	SW1	SW2	Function Mode
1	ON	ON	Manufacture Diagnostic Mode
2	ON	OFF	Serial upgrade mode
3	OFF	ON	Reserved
4	OFF	OFF	Operating Mode (Default)

LED Indicator

LED definition

No.	Port	Green LED	Amber LED	Function
1	Network	Flashing(1sec)	OFF	Ethernet 100 Traffic
2		OFF	Flashing(1sec)	Ethernet 10 Traffic
3		OFF	OFF	Ethernet disconnect
4	COM	ON	Flashing(1~3sec)	RS-232 Port Active
5		OFF	Flashing(1sec)	Serial Upgrade Mode
6		Two LED cross Flashing	Two LED cross Flashing	Auto Diagnostic Mode
7		ON	ON	Hardware Error

Appendix B Firmware Upgrades

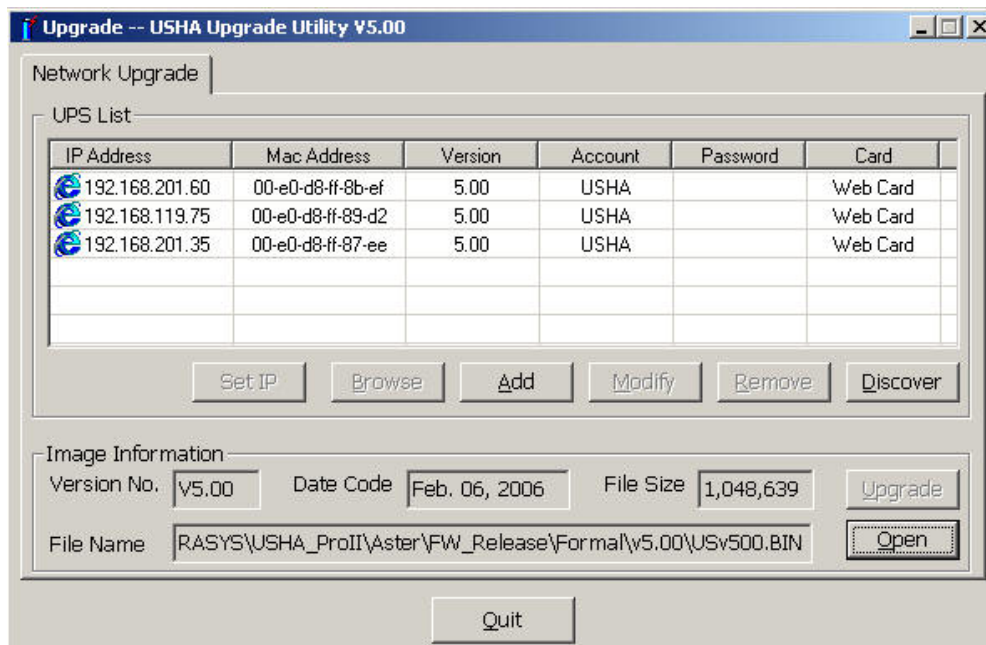
General information

To be able to perform firmware upgrading, USHA must be connected to the same network as the workstation from which the file is to be sent.

In the USHA Control menu, check that the *Network Upgrade* is enabled and that you have the login string information and the Community Read/Write Password.

Updating USHA Firmware from Windows 9x/Me/NT 4.0/2000/XP/2003

To perform firmware upgrade, use the **upgradeV5.00.exe** program on the USHA CD-ROM. This program is compatible with Windows95/98/Me, Windows NT 3.51/4.0/2000/XP/2003 and higher.



1. **UPS List:** Displays the addresses of the USHA present in the local network.
2. **Discover:** Search for the USHA on the local network.
3. **Remove:** Removes the selected USHA from the UPS List.
4. **Modify:** Lets you modify the parameters of the USHA selected in the UPS List.
5. **Add:** Lets you add the IP address of a USHA to the UPS List manually.
6. **Browse:** Open USHA Webpage of the USHA selected in the UPS List.
7. **Set IP:** Re-set USHA IP Address; Subnet Mask and Gateway Address of the USHA selected in the UPS List.
8. **Upgrade:** Sends the program loaded with the Open button to the selected USHA of the UPS List.
9. **Open:** Open and load the new image file for upgrade.
10. **Quit:** Exit the program.

Note: You can simultaneously upgrade up to 4 USHAs on the network using the upgradeV5.00.exe program

Updating USHA Firmware from UNIX

To be able to upgrade the firmware using a UNIX operating system, you must have the command **tftp** installed in your system.

For uploading of the new firmware to USHA, execute the following command line:

```
# tftp
tftp> binary
tftp> connect <host>
tftp> put <filename> upgrade @<password> @<username>
```

where:

binary	: Binary data download mode
<host>	: USHA IP address. Example 172.168.1.18
put	: PUT command
<filename>	: Name of the file containing the firmware image. Example: /mnt/floppy/USHA500.bin
upgrade	: Upgrade key word
@	: Separator characters
<password>, <username>	: User Name and Password for read/write access

Appendix C HTTP Security Control

Flow Chart of the "HTTP Security Control" Option

