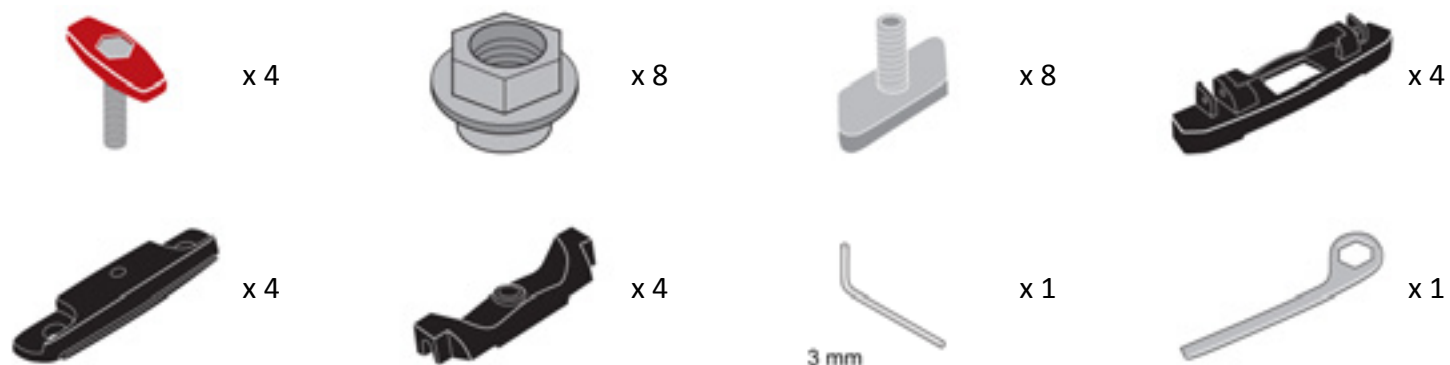
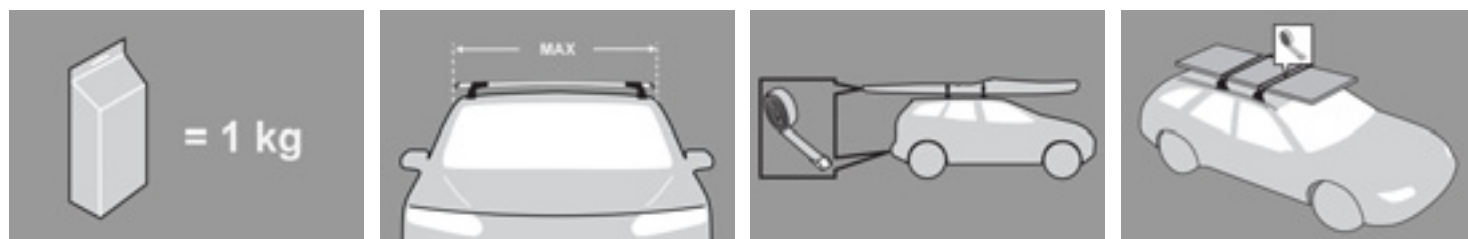


## GB Fitting Instructions for Basic Carrier



## First Time Installation



- Remove parts from packaging and check contents. Contact your Prorack dealer if parts are missing or damaged.



- This kit fits type A, B, C and D.
- These instructions show type A crossbar fitted. They also apply to type B, C and D.



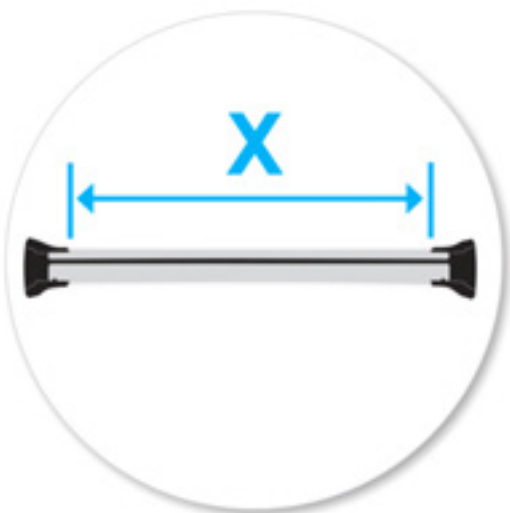
- Use keys to remove covers.



- Use hex screwdriver to reverse adjusting screw 10 turns.



- Press adjusting screw and pull crossbar legs out. Refer to the crossbar instructions for crossbar adjustment.
- Ensure each end of the crossbar is adjusted equally.



- Set bars to length (refer to the crossbar instructions for crossbar adjustment).
- Please check the rear of this manual for information relating specifically to your vehicle.



- Tighten adjusting screw to 5 Nm.



- Remove clamp block by pressing backwards.



- Remove both pins from each leg (use spanner located inside left hand cover to assist).



- Detach foot from leg. Store loose parts in a safe place.
- Repeat for all legs.



- Assemble foot from kit into leg.



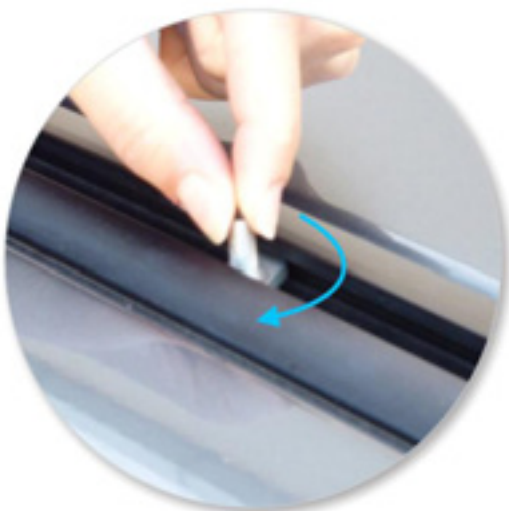
- Insert pins through foot into leg.



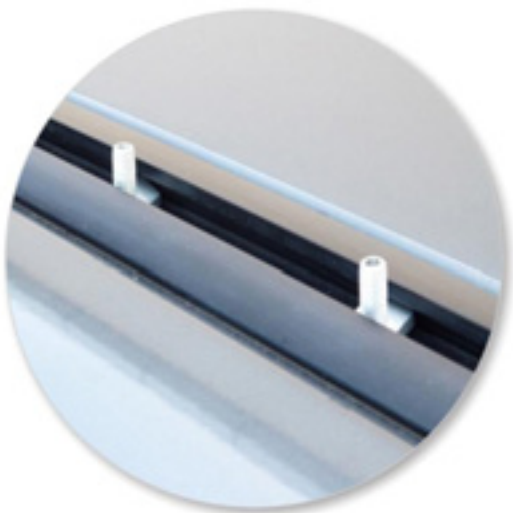
- Select plastic internal block (from fitting kit) and insert into foot.
- Repeat for all legs.



- Place T-bolt into track by either inserting it from the top or sliding in from the end.



- Rotate bolt clockwise so it engages in place in the centre of track.



- Use 4 T-bolts per track
- Repeat for both tracks.



- Place track pad over T-bolt



- Thread the nut over the T-bolt by hand.
- Repeat for all four positions.





- Use the 3mm Allen key to hold the T-bolt in a stationary position and ensure the T-bolt has correct engagement.
- Using the 10mm spanner supplied, tighten the nut to 5Nm.
- Option: Use spanner located in left hand crossbar cover



- Place crossbars over mounting assembly on tracks.



- Tighten the red plastic knob.





- Ensure the red plastic knob is in the position shown when fully tightened.
- Repeat for all four positions.



- Check crossbar is securely attached to the vehicle.
- Use keys to fit and lock covers

**CAUTION:**  
**Recheck all fasteners immediately after a load is applied to the crossbars.**  
**Regularly check screws are tight.**