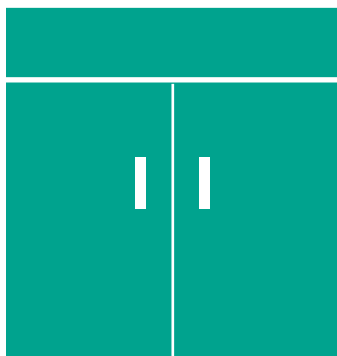


User's Manual



Protector® Storage Cabinets - Standard, Acid, Solvent and Vacuum Pump

Models

9900000	9901000	9902000	9903000	9904000
9900100	9901100	9902100	9903100	9904100
9900200	9901200	9902200	9903200	9904200
9900300	9901300	9902300	9903300	9904300
9900400	9901400	9902400	9903400	9904400
9900500	9901500			9904500
9900600	9901600			
9900700				
9900800				
9905000	9906000	9907000		
9905100	9906100	9907100		
9905200	9906200			
9905300	9906300			



Labconco's Mascot,
Labby the LABster



*Protecting your
laboratory environment*

LABCONCO®

For more information, please contact us:

ExpotechUSA

10700 Rockley Road
Houston, Texas 77099
USA

281-496-0900 [voice]

281-496-0400 [fax]

E-mail: sales@expotechusa.com

Website: www.ExpotechUSA.com

The information contained in this manual and the accompanying product are copyrighted and all rights are reserved by Labconco Corporation. Labconco Corporation reserves the right to make periodic design changes without obligation to notify any person or entity of such change.

Protector® is a registered trademark of Labconco Corporation.

Warranty

Labconco provides a warranty on all parts and factory workmanship. The warranty includes areas of defective material and workmanship, provided such defect results from normal and proper use of the equipment.

The warranty for all Labconco products will expire one year from date of installation or two years from date of shipment from Labconco, whichever is sooner, except the following:

- Purifier® Delta® Series Biological Safety Cabinets carry a three-year warranty from date of installation or four years from date of shipment from Labconco, whichever is sooner.
- Carts carry a lifetime warranty.
- Glassware is not warranted from breakage when dropped or mishandled.

This limited warranty covers parts and labor, but not transportation and insurance charges. In the event of a warranty claim, contact Labconco Corporation or the dealer who sold you the product. If the cause is determined to be a manufacturing fault, the dealer or Labconco Corporation will repair or replace all defective parts to restore the unit to operation. Under no circumstances shall Labconco Corporation be liable for indirect, consequential, or special damages of any kind. This statement may be altered by a specific published amendment. No individual has authorization to alter the provisions of this warranty policy or its amendments. Lamps and filters are not covered by this warranty. Damage due to corrosion or accidental breakage is also not covered.

Limitation of Liability

The disposal and/or emission of substances used in connection with this equipment may be governed by various federal, state, or local regulations. All users of this equipment are required to become familiar with any regulations that apply in the user's area concerning the dumping of waste materials in or upon water, land, or air and to comply with such regulations. Labconco Corporation is held harmless with respect to user's compliance with such regulations.

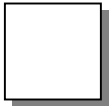


TABLE OF CONTENTS

CHAPTER 1: INTRODUCTION	1
About This Manual	3
Typographical Conventions	4
Your Next Step	4
CHAPTER 2: PREREQUISITES	7
CHAPTER 3: GETTING STARTED	9
Unpacking Your Cabinet	10
Storage Cabinet Components	10
Setting Up Your Cabinet	12
Component Identification	13
Standard Base Storage Cabinets	13
Acid Storage Cabinets	15
Solvent Storage Cabinets	17
Vacuum Pump Storage Cabinets	19
Installation	21
Cabinet Leveling – All Cabinets	21
Vent Installation	22
Acid Storage Cabinet	22
Solvent Storage Cabinet	23
Filler Panel – All Cabinets	24
SpillStopper Work Surface	25
Electrical Ground Connection – Solvent Storage Cabinet	27
Acid Storage Cabinet Shelf Liner	28
Adjustable Shelf – Solvent Storage Cabinet	28
Junction Box Connection – Vacuum Pump Cabinet	28
Environmental Conditions	29
CHAPTER 4: USING YOUR CABINETS	31
Normal Operation	31
CHAPTER 5: MAINTAINING YOUR CABINETS	33

APPENDIX A: CABINET DIMENSIONS	35
APPENDIX B: CABINET REPLACEMENT PARTS	41
APPENDIX C: CABINET ACCESSORIES	43
APPENDIX D: QUICK REFERENCE STORAGE CABINETS	47
DECLARATION OF CONFORMITY	48

CHAPTER 1

INTRODUCTION

Congratulations on your purchase of a Protector® Storage Cabinet. Labconco manufactures four types of Storage Cabinets – Acid, Solvent, Standard Base, and Vacuum Pump.

Protector® Acid Storage Cabinets have been engineered to efficiently store and ventilate corrosive materials and include an interior plastic liner to protect the metal from corrosion.

Protector® Solvent Storage Cabinets are designed to efficiently store flammable materials and includes a 1-1/2" double wall construction for fire protection.

Protector® Standard Base Storage Cabinets are utilized for general storage and are not recommended for corrosive or flammable materials.

Protector® Vacuum Pump Storage Cabinets are utilized for vacuum pump storage.

All cabinets' feature 18 gauge steel construction with epoxy coated paint, to give you both a durable and chemically resistant finish that ensures many years of quality service.

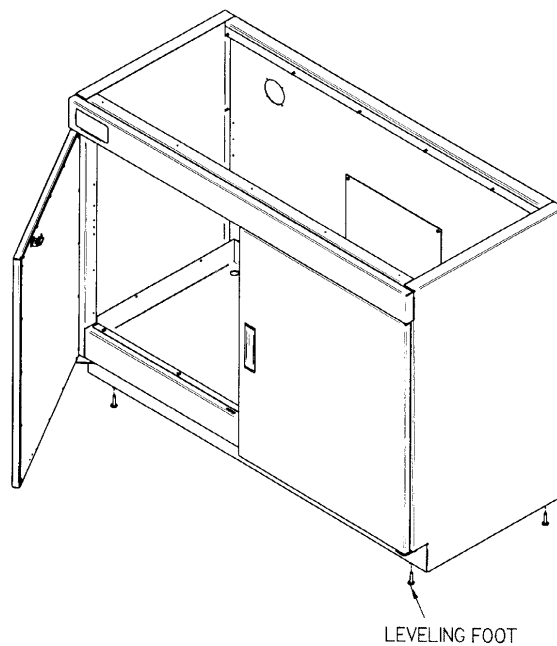
The Labconco Protector® Storage Cabinets has been engineered in accordance with NFPA 30, OSHA 1910-62, and all pertinent SEFA regulations. The cabinets

are available in several configurations to meet your various requirements.

All Protector® Storage Cabinets are designed with provisions for venting to the exterior of your laboratory. Vent connections are located on the back wall of the cabinet and can be used at the discretion of the customer.

The vent connection on the Solvent Storage Cabinet is supplied with a closure plug on both sides, and is diametrically opposed on the back wall of the cabinet for optimum airflow throughout its interior.

The vent connection on the Acid Cabinet and Standard Base Cabinet is located on the back wall of the cabinet and does not include a closure plug.



About This Manual

This manual will help you learn how to install, use, and maintain your Storage Cabinet. Instructions for performing routine maintenance and for minor modifications to your Storage Cabinet are included.

Chapter 1: Introduction provides a brief overview of the Storage Cabinets, explains the organization of the manual, and defines the typographical conventions used in the manual.

Chapter 2: Prerequisites explains what you need to do to prepare your site before you install the Storage Cabinet.

Chapter 3: Getting Started contains the information you need to properly unpack, inspect, and install the Storage Cabinet.

Chapter 4: Using Your Storage Cabinet discusses the normal operation of the Storage Cabinet.

Chapter 5: Maintaining Your Storage Cabinet explains how to perform routine maintenance on the Storage Cabinet.

Appendix A: Storage Cabinet Dimensions contains comprehensive diagrams showing the dimensions for the Storage Cabinets.

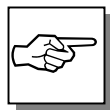
Appendix B: Storage Cabinet Replacement Parts contains a list of service parts for the Storage Cabinets.

Appendix C: Storage Cabinet Accessories lists the part numbers and descriptions of the accessories available for the Storage Cabinet.

Appendix D: Storage Cabinet Quick Reference lists sizes and part numbers for Solvent, Acid, Standard Base, and Vacuum Pump Cabinets.

Typographical Conventions

Recognizing the following typographical conventions will help you understand and use this manual:



- Book, chapter, and section titles are shown in italic type (e.g., *Chapter 3: Getting Started*).
- Steps required to perform a task are presented in a numbered format.
- Comments located in the margins provide suggestions, reminders, and references.
- Critical information is presented in boldface type in paragraphs that are preceded by the exclamation icon. Failure to comply with the information following an exclamation icon may result in injury to the user or permanent damage to the Storage Cabinet.
- Important information is presented in capitalized type in paragraphs that are preceded by the pointer icon. It is imperative that the information contained in these paragraphs be thoroughly read and understood by the user.
- Information that is specific to a particular model of Storage Cabinet. The A icon indicates text specific to the Acid Storage Cabinet, the S icon indicates text specific to the Solvent Storage Cabinet, the B icon indicates text specific to the Standard Base Storage Cabinet, and the V icon indicates text specific to the Vacuum Pump Storage Cabinet.

Your Next Step

If your Storage Cabinet needs to be installed, proceed to *Chapter 2: Prerequisites* to ensure your installation site meets all of the requirements. Then, go to *Chapter 3: Getting Started* for instructions on how to install the Storage Cabinet and make all of the necessary connections.

For information on the operational characteristics of the Storage Cabinet, go to *Chapter 4: Using Your Storage Cabinet*.

If the Storage Cabinet is installed and you need to perform routine maintenance on the Storage Cabinet, proceed to *Chapter 5: Maintaining Your Storage Cabinet*.

For information on the dimensions of the Storage Cabinet, proceed to *Appendix A*.

For replacement parts on the Storage Cabinet, proceed to *Appendix B*.

To find information for Accessories for the Storage Cabinet, proceed to *Appendix C*.

For a quick reference of all Cabinets, refer to *Appendix D*.

CHAPTER 2

PREREQUISITES

Before you install your Storage Cabinet, you need to prepare your site for installation. Carefully examine the location where you intend to install the Storage Cabinet. You must be certain that the area is level and of solid construction. In addition, your Storage Cabinet should be adjacent to a vent connection to allow for venting to the exterior of the building, if so desired. Otherwise, it is typical to vent the Storage Cabinet through the work surface and fume hood, which is supported by the Storage Cabinet.

Space Requirements

Refer to *Appendix A: Storage Cabinet Dimensions* for complete Storage Cabinet dimensional specifications.

Your Next Step

After you have determined that the location for your Storage Cabinet accommodates the installation, you are ready to unpack and install your Storage Cabinet. Proceed to *Chapter 3: Getting Started*.

CHAPTER 3

GETTING STARTED

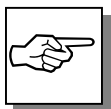
Now that the site for your Storage Cabinet is properly prepared, you are ready to unpack, inspect, and install, the Storage Cabinet. Read this chapter to learn how to:

- Unpack and move the Storage Cabinet.
- Set up the Storage Cabinet – Acid, Solvent, Standard Base, and Vacuum Pump.
- Properly level the Storage Cabinet.
- Properly install the accessory work surface.
- Attach the filler panel for additional aesthetics.
- Properly vent the Storage Cabinet.
- Properly ground the Solvent Cabinet.
- Connect the electrical supply source to the Vacuum Pump Cabinet.

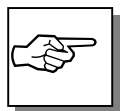
Depending upon which model of Storage Cabinet you are installing, you will need common hand tools, including a Phillips head screwdriver, a flat blade screwdriver, a ¾" open end wrench, and pliers to complete the instructions in this chapter.

Unpacking Your Storage Cabinets

Carefully unpack the Storage Cabinet and inspect it for damage that may have occurred in transit. If your Storage Cabinet is damaged, notify the delivery carrier immediately and retain the entire shipment intact for inspection by the carrier.



DO NOT RETURN ANY STORAGE CABINET WITHOUT THE PRIOR AUTHORIZATION OF LABCONCO. UNAUTHORIZED RETURNS WILL NOT BE ACCEPTED.



IF YOUR STORAGE CABINET WAS DAMAGED IN TRANSIT, YOU MUST FILE A CLAIM DIRECTLY WITH THE FREIGHT CARRIER. LABCONCO CORPORATION AND ITS DEALERS ARE NOT RESPONSIBLE FOR SHIPPING DAMAGE.

Do not discard the carton or packing material for your Storage Cabinet until you have checked all of the components, installed, and tested the Storage Cabinet.

Storage Cabinet Components

As previously mentioned Labconco manufactures four types of Storage Cabinets, Acid, Solvent, Standard Base, and Vacuum Pump.

The different Storage Cabinet models require different assembly components. Locate the model of Storage Cabinet you received in the following tables. Verify that the components listed are present and undamaged.

<u>Model Number</u>	<u>Description</u>
9900000	48" Standard Base Cabinet
9900100	36" Standard Base Cabinet
9900200	30" Standard Base Cabinet
9900300	24" Standard Base Cabinet – Right Hinged
9900400	18" Standard Base Cabinet – Right Hinged
9900500	12" Standard Base Cabinet – Right Hinged
9900600	24" Standard Base Cabinet – Left Hinged
9900700	18" Standard Base Cabinet – Left Hinged
9900800	12" Standard Base Cabinet – Left Hinged
9904000	24" ADA Standard Base Cabinet – Right Hinged
9904100	18" ADA Standard Base Cabinet – Right Hinged
9904200	12" ADA Standard Base Cabinet – Right Hinged
9904300	24" ADA Standard Base Cabinet – Left Hinged
9904400	18" ADA Standard Base Cabinet – Left Hinged
9904500	12" ADA Standard Base Cabinet – Left Hinged
9901000	48" Acid Cabinet
9901100	36" Acid Cabinet
9901200	30" Acid Cabinet
9901300	24" Acid Cabinet – Right Hinged
9901400	18" Acid Cabinet – Right Hinged
9901500	24" Acid Cabinet – Left Hinged
9901600	18" Acid Cabinet – Left Hinged
9905000	24" ADA Acid Cabinet – Right Hinged
9905100	18" ADA Acid Cabinet – Right Hinged
9905200	24" ADA Acid Cabinet – Left Hinged
9905300	18" ADA Acid Cabinet – Left Hinged
9902000	48" Solvent Cabinet
9902100	36" Solvent Cabinet
9902200	30" Solvent Cabinet
9902300	24" Solvent Cabinet – Right Hinged
9902400	24" Solvent Cabinet – Left Hinged
9903000	48" Self Closing Solvent Cabinet
9903100	36" Self Closing Solvent Cabinet
9903200	30" Self Closing Solvent Cabinet
9903300	24" Self Closing Solvent Cabinet – Right Hinged
9903400	24" Self Closing Solvent Cabinet – Left Hinged
9906000	24" ADA Solvent Cabinet – Right Hinged
9906100	24" ADA Solvent Cabinet – Left Hinged
9906200	24" ADA Self Closing Solvent Cabinet – Right Hinged
9906300	24" ADA Self Closing Solvent Cabinet – Left Hinged
9907000	18" Vacuum Pump Cabinet – Right Hinged
9907100	18" Vacuum Pump Cabinet – Left Hinged

Plus the Following:

Part #	Component Description
9920301	Panel, Filler Standard (for 30" Interior Depth Protector® XL Fume Hood)
or	
9920304	Panel, Filler ADA (for 30" Interior Depth Protector® XL Fume Hood)
9920400	Angle, Filler Panel (for 30" Interior Depth Protector® XL Fume Hood)
or	
9920401	Angle, Filler Panel ADA (for 30" Interior Depth Protector® XL Fume Hood)
1928300	Leveling Feet (4)

Different filler panel depths are available; refer to *Appendix C: Storage Cabinet Accessories* for filler panel selection.

If you do not receive one or more of the components listed for your Storage Cabinet, or if any of the components are damaged, contact Labconco Corporation immediately for further instructions.

Setting Up Your Storage Cabinet

After you verify the Storage Cabinet components listed on the following pages, move your Storage Cabinet to the location where you want to install it. Then, follow the steps for installation.

Component Identification

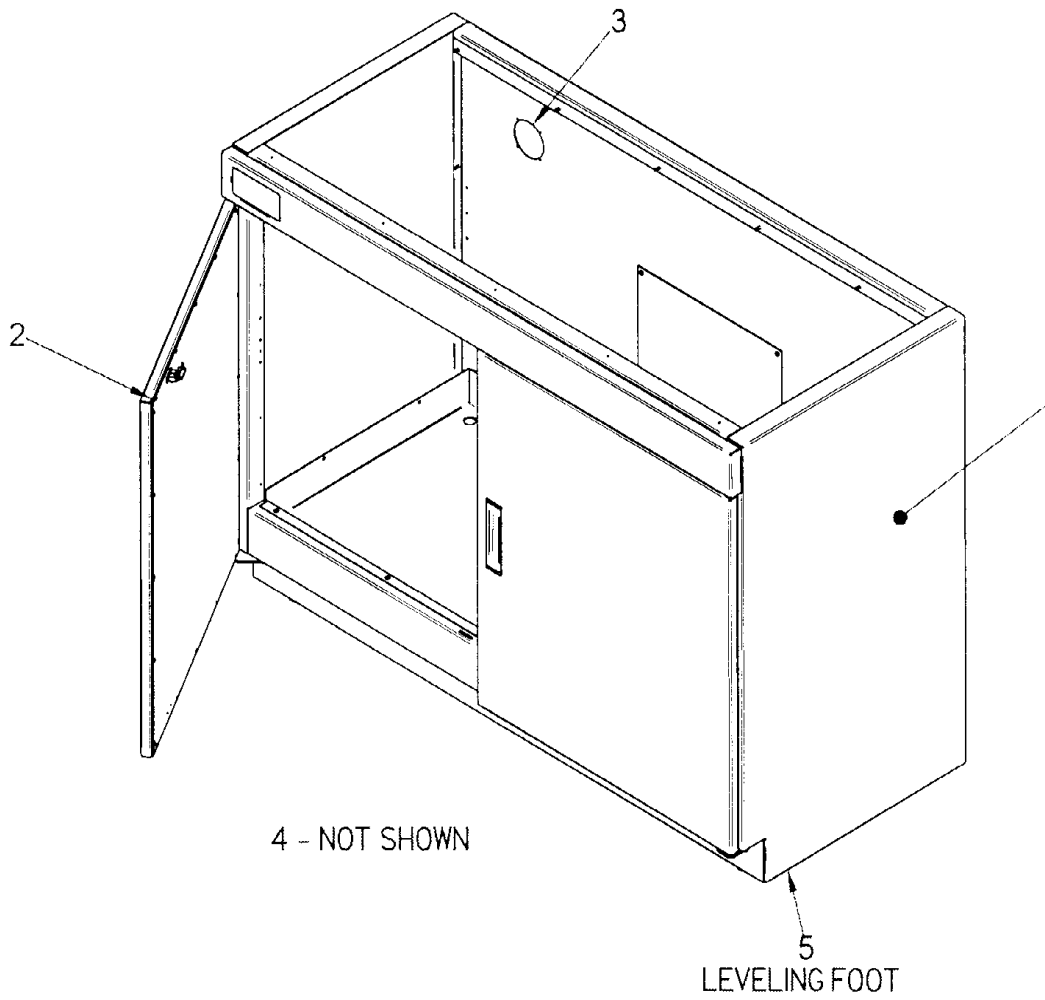
Protector Standard Base Storage Cabinets

Models 9900000, 9900100, 9900200, 9900300, 9900400, 9900500, 9900600, 9900700, 9900800, 9904000, 9904100, 9904200, 9904300, 9904400, 9904500

B

1. **Cabinet.** - Features 18 gauge steel exterior sidewalls. The cabinet shell is epoxy coated to provide a durable chemical resistant surface.
2. **Door Assembly** - Cabinet features one or two manual closing, non-locking doors. The doors are 18 gauge epoxy coated steel and feature a strike and latch assembly to hold them in position once closed.
3. **Vent Connection** - Cabinet features two vent connections on the back wall of the cabinet. The vent openings have been left open, and venting is at the discretion of the customer. Instructions for venting can be found on page 22. For Base Vent Kit accessory see page 43.
4. **Optional – Accessory Shelf** – Features 16-gauge steel shelf to provide additional storage. Shelf support kit allows height adjustment.
5. **Leveling Feet** - Four individual leveling feet provide adjustability to level the cabinet per the requirements of your laboratory floor.

Protector Standard Base Storage Cabinet



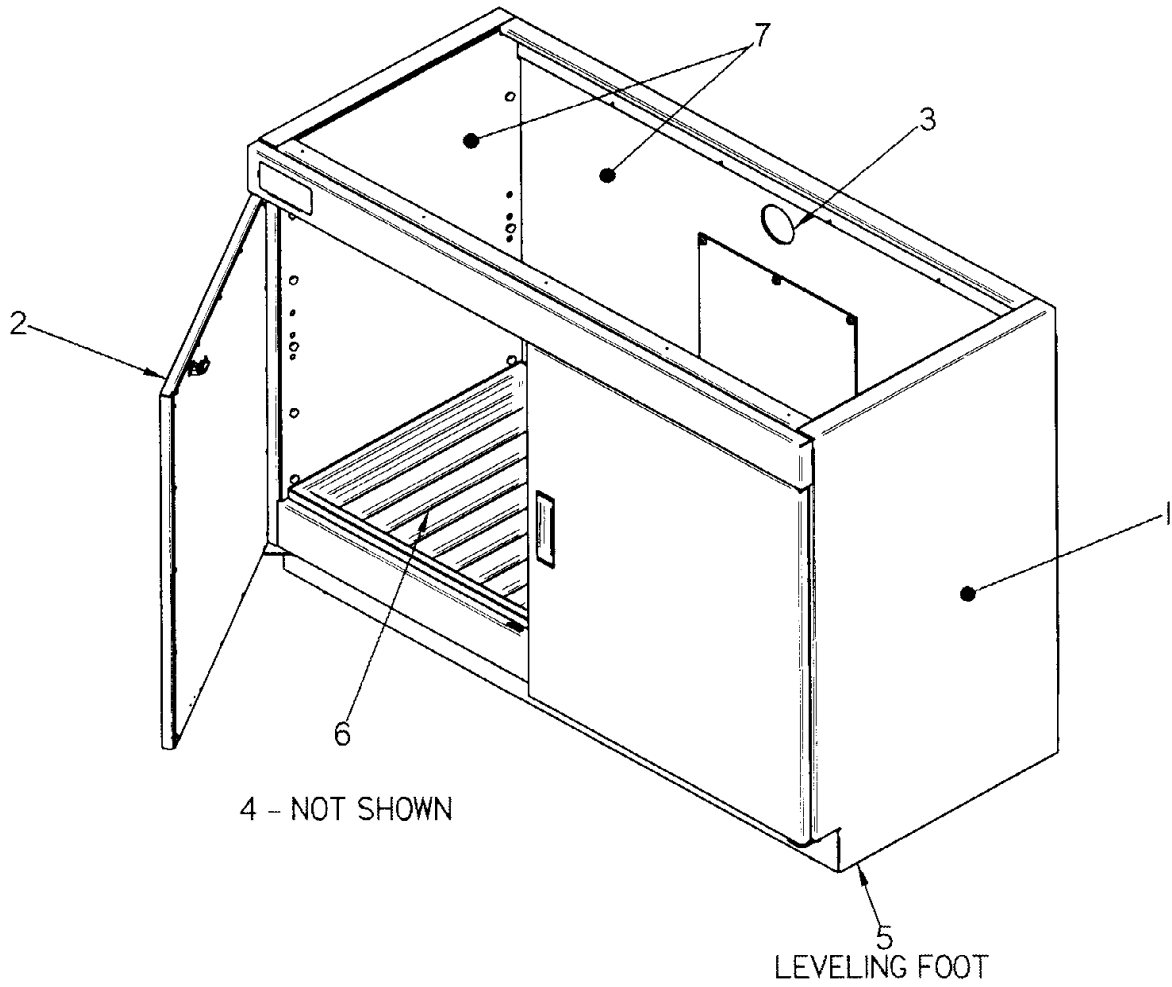
Protector Acid Storage Cabinets

Models 9901000, 9901100, 9901200, 9901300,
9901400, 9901500, 9901600, 9905000, 9905100,
9905200, 9905300



1. **Cabinet.** Features 18 gauge steel exterior sidewalls. The cabinet shell is epoxy coated to provide a durable chemical resistant surface.
2. **Door Assembly.** Depending on the width, the cabinet features one or two manual closing, non-locking doors. The doors are 18 gauge epoxy coated steel and feature a strike and latch assembly to hold them in position once closed. The backs of the doors are lined with polyethylene to provide additional corrosion protection.
3. **Vent Connection.** Cabinet features two vent connections located on the back wall of the cabinet. These vents are open. Using a Vent Kit, the cabinet may be vented to the fume hood or directly outside. Instructions for venting can be found on page 22. For Acid Vent Kit accessory see page 43.
4. **Optional – Accessory Shelf.** Features 16 gauge steel shelf with polyethylene molded tray to hold spills and provides a chemical resistant surface. The shelf support kit allows height adjustment.
5. **Leveling Feet.** Four individual leveling feet provide adjustability to level the cabinet per the requirements of your laboratory floor.
6. **Acid Shelf Liners.** Vacuum formed polyethylene liner trays fit down into both the adjustable shelf and the bottom floor of the cabinet. These liner trays give additional chemical resistance to the cabinet interior and are removable for easy cleaning. The liners are watertight in construction and will contain any minor spills and/or drips from containers stored in the cabinet.
7. **Interior Liner.** Interior sides and back are fully lined with polyethylene plastic to provide excellent corrosion resistance.

Protector Acid Storage Cabinet



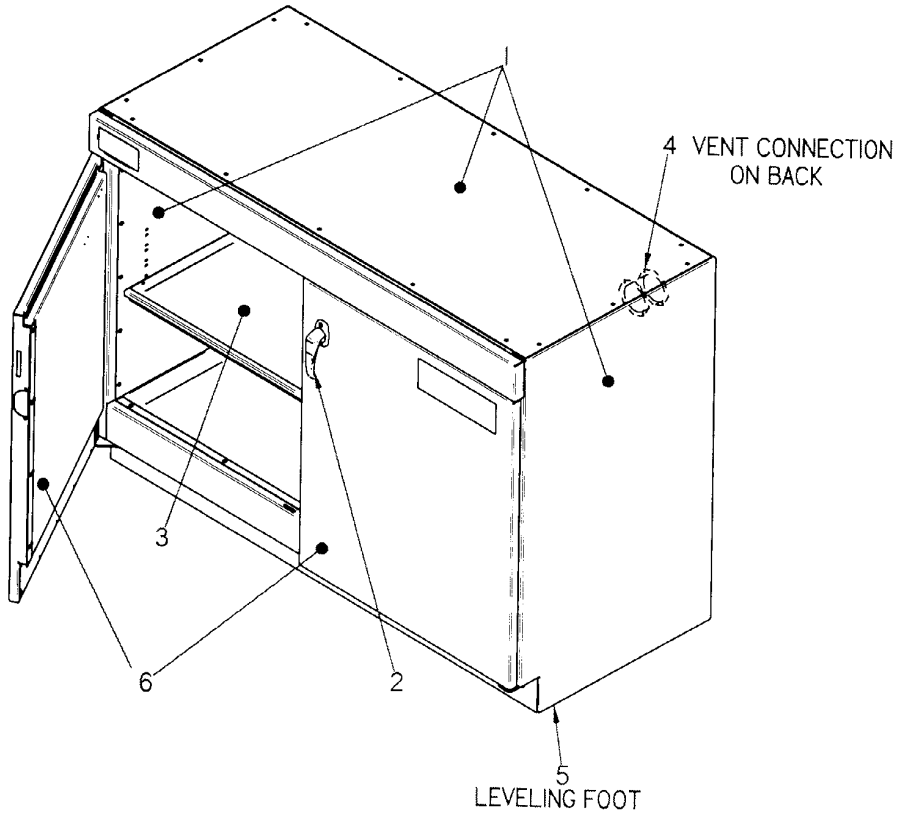
Protector Solvent Storage Cabinets

Models 9902000, 9902100, 9902200, 9902300,
9902400, 9903000, 9903100, 9903200, 9903300,
9903400, 9906000, 9906100, 9906200, 9906300

S

1. **Double Wall Construction.** Cabinet features 18 gauge epoxy coated steel exterior and interior liner walls with a 1-1/2" air space located between them.
2. **Locking Door Assembly.** Cabinet features one or two manual closing doors. The doors are held in the closed position by the three position-locking handles. **NOTE:** Some models feature one or two self-closing doors.
3. **Shelf.** 16 gauge steel shelf features fully welded corners to hold spills and epoxy coated to provide a chemical resistant surface. The shelf supports inside the cabinet allows for height adjustment.
4. **Vent Connection.** Two vent connections are located on the back wall of the cabinet and are diametrically opposed. Each vent connection includes a threaded coupling, two flame arrestors, and closure plugs. Instructions for venting can be found on page 23.
5. **Leveling Feet** Four individual leveling feet provide adjustability to level the cabinet per the requirements of your laboratory floor.
6. **Optional Self-Closing Doors.** Some models include a self-closing door mechanism to close doors automatically in case of fire.

Protector Solvent Storage Cabinet



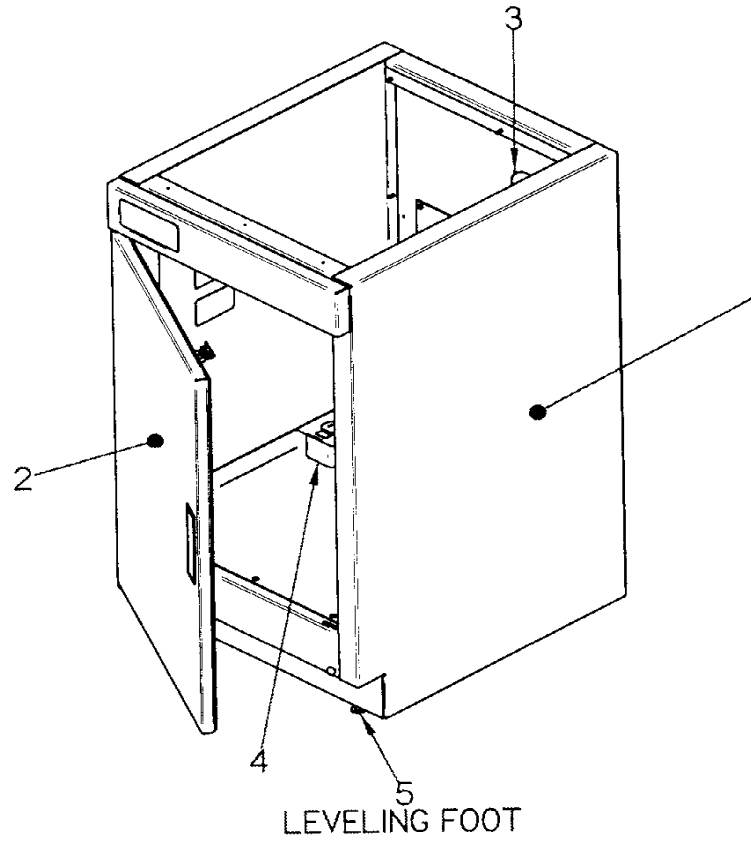
Protector Vacuum Pump Storage Cabinets

Models 9907000, 9907100



1. **Cabinet** – Features 18 gauge steel exterior sidewalls. The cabinet shell has been epoxy coated to provide a durable chemical resistant surface.
2. **Door Assembly** – Cabinet features one manual closing, non-locking door. The door is of 18 gauge epoxy coated steel and features a strike and latch assembly to hold it in position once closed.
3. **Vent Connection.** Cabinet features two vent connections on the back wall of the cabinet. These vent openings have been left open and venting is left to the discretion of the customer.
4. **Electrical Connection** – Cabinet features 115V, 60 Hz electrical outlet to provide power for the vacuum pump.
5. **Leveling Feet** – Four individual leveling feet provide adjustability to level the cabinet per the requirements of your laboratory floor.

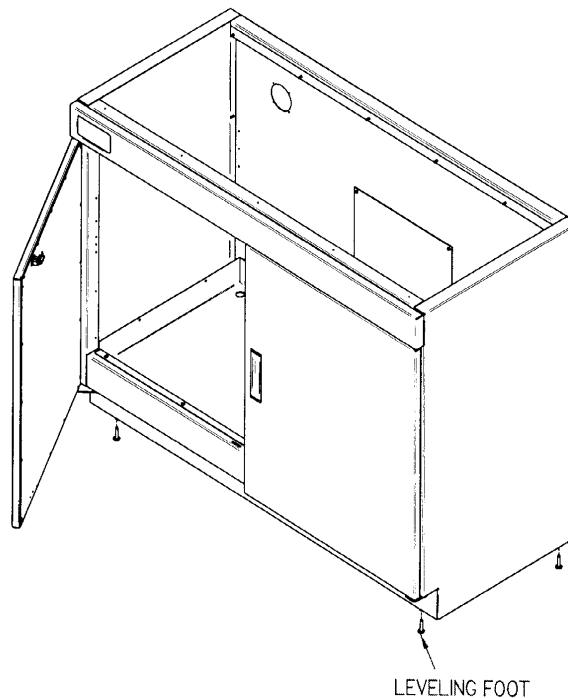
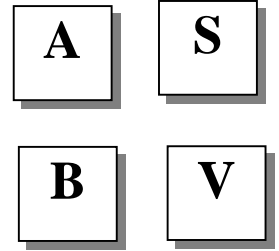
Protector Vacuum Pump Storage Cabinet



Installation

Cabinet Leveling – All Models

Each cabinet is supplied with four independent leveling feet. These leveling feet have been packaged separately and must be installed on the bottom of the cabinet before installation. Each leveling foot is independently adjustable by turning it by means of a crescent wrench underneath the cabinet. All of the leveling feet, with exception to the Solvent Storage Cabinet, can be adjusted with a flat blade screw driver from inside the cabinet through the access holes in the lower metal pan.

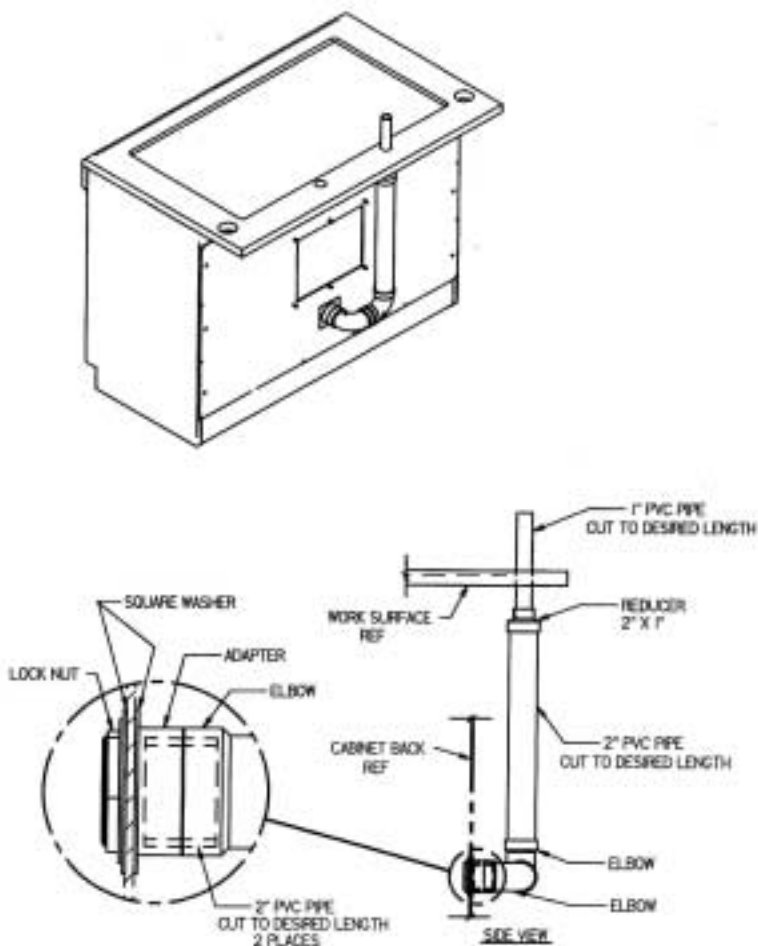


Vent Installation – Acid and Standard Base Cabinet

A

B

To ventilate the Acid Storage Cabinet and the Standard Base Storage Cabinet properly, first decide which of the two vent connections in the back of the cabinet that you intend to use. The lower vent connection should be used for heavier than air vapors and the upper vent connection should be used for lighter than air vapors to obtain the best results within the cabinet structure. Vent Kit, P/N 35911, allows the Acid Storage Cabinet or Standard Base Cabinet to be vented directly into a Protector® Laboratory Hood. Run the vent line through either the work surface and fume hood or connect through separate duct system to the outside. The vent is sized for 2" diameter nominal PVC pipe.



Vent Installation – Solvent Storage Cabinet



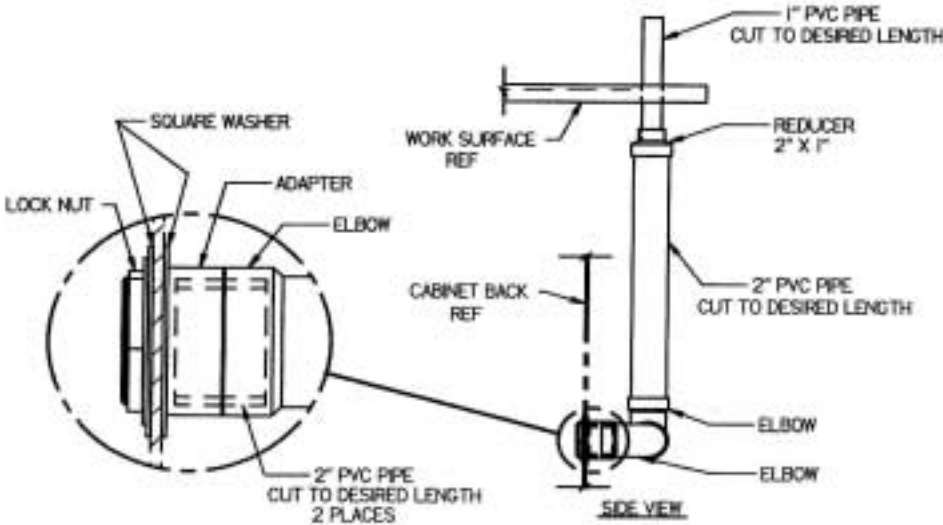
To ventilate the cabinet properly remove both the exterior and interior barrel plugs from the vent connection that you are venting.

The lower vent connection should be used for heavier than air vapors and the higher vent connection on the back wall should be used for lighter than air vapors to obtain the best fume removal within the cabinet.

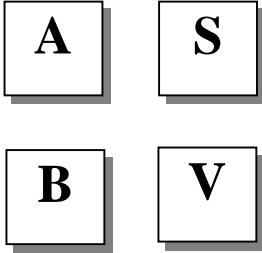
The cabinet vent connections are designed to accept 2" diameter threaded metal pipe material, which can be purchased locally. Once the connection on the back of the cabinet has been completed, remove both the internal and external plugs from the remaining vent connection to allow for proper airflow from the cabinet.



CAUTION: Retain the barrel plugs used with your vent connections should it become necessary to isolate the cabinet from the vent connection as ducted.

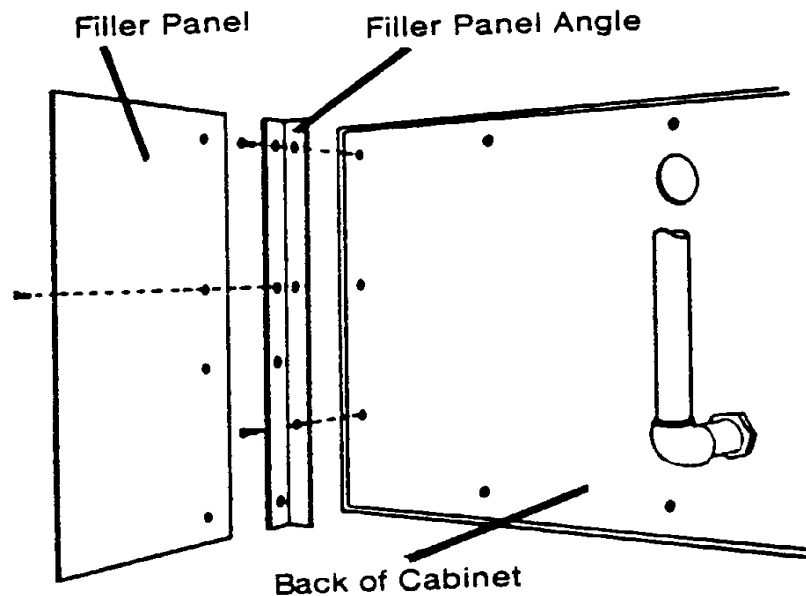


Filler Panel – All Cabinets



One 8.0" filler panel and filler panel angle has been supplied with your cabinet to close off the plumbing access. Attach the filler panel angle directly to the back wall of the cabinet structure using the four #8 sheet metal screws that hold the back panel in position. Next, attach the filler panel to this angle by the three #8 sheet metal screws provided.

Different filler panel depths are available; refer to *Appendix C: Storage Cabinet Accessories* for filler panel selection.

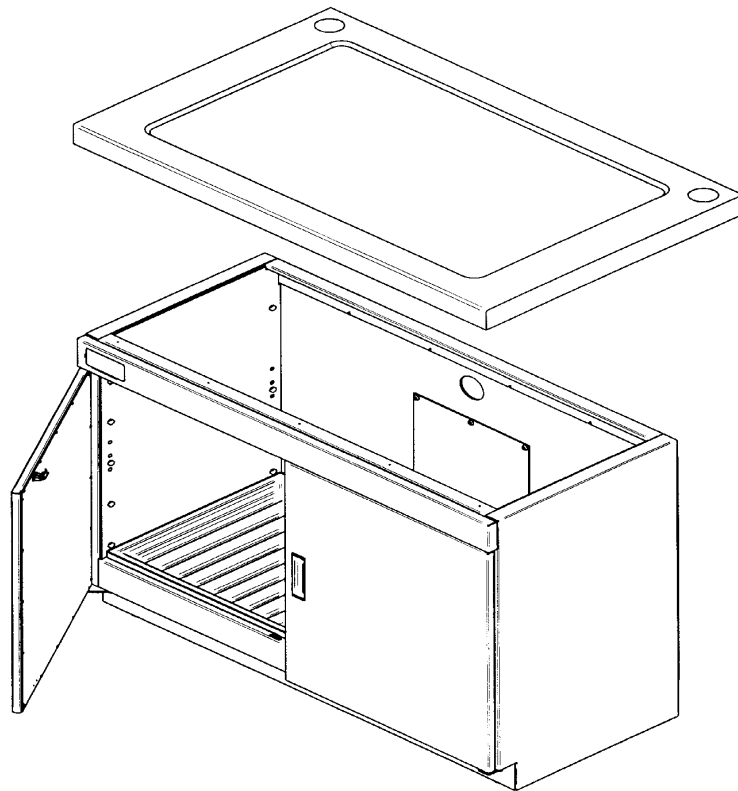


SpillStopper™ Work Surface

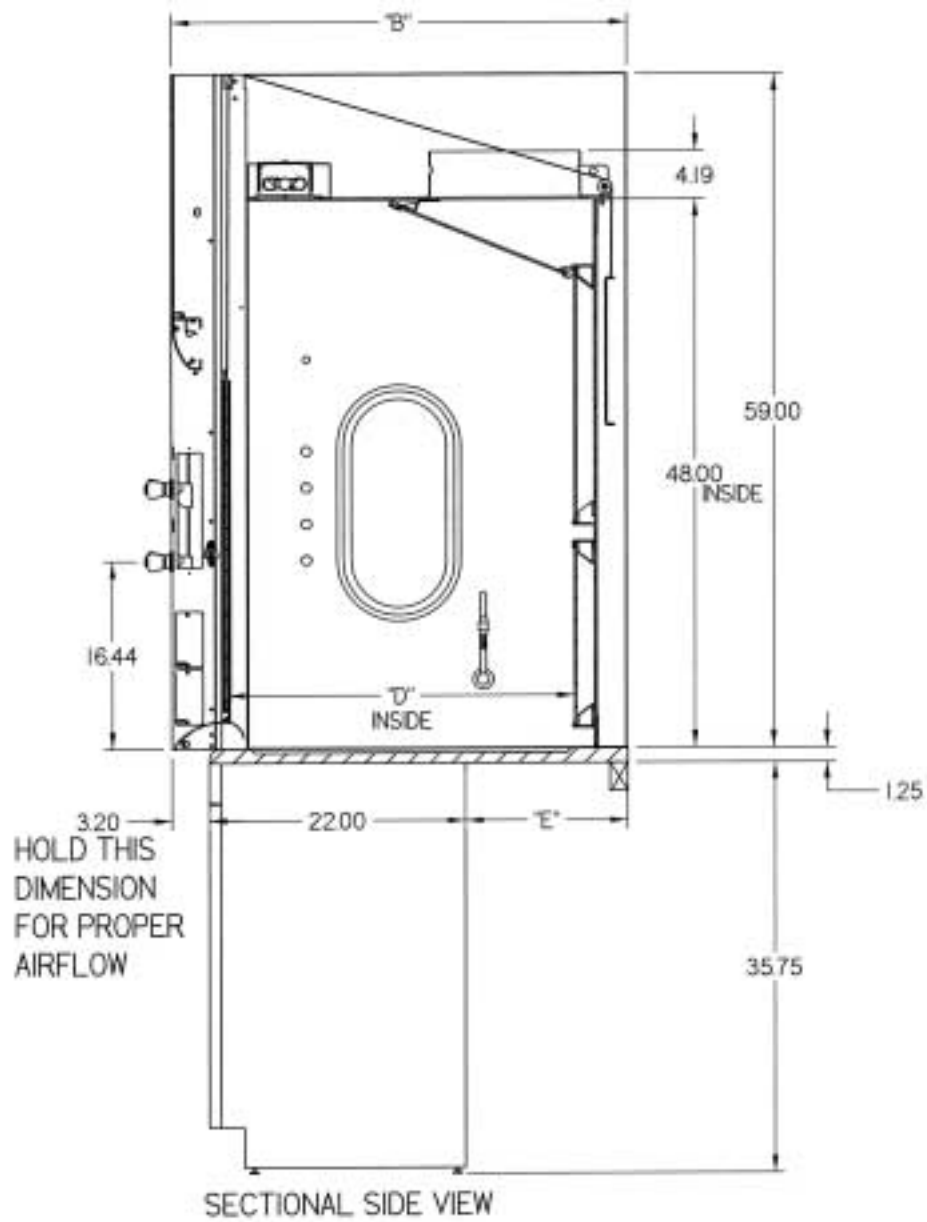
Once your cabinet has been properly leveled, vented (optional), and filler panel installed, place the epoxy work surface directly on top of the cabinet. It is not necessary to attach the work surface to the cabinet. It is held in place both by its own weight and the weight of the fume hood and other equipment on top of it. Align the work surface on top of the cabinet before making plumbing or electrical connections through the work surface itself. Normally, the work surface is aligned flush with the top front of the cabinet and overhangs the back of the cabinet.



WARNING: Never use screws and/or bolts to fasten the epoxy molded work surface directly to the cabinet as this can damage the work surface.



SpillStopper™ Work Surface Installation Detail

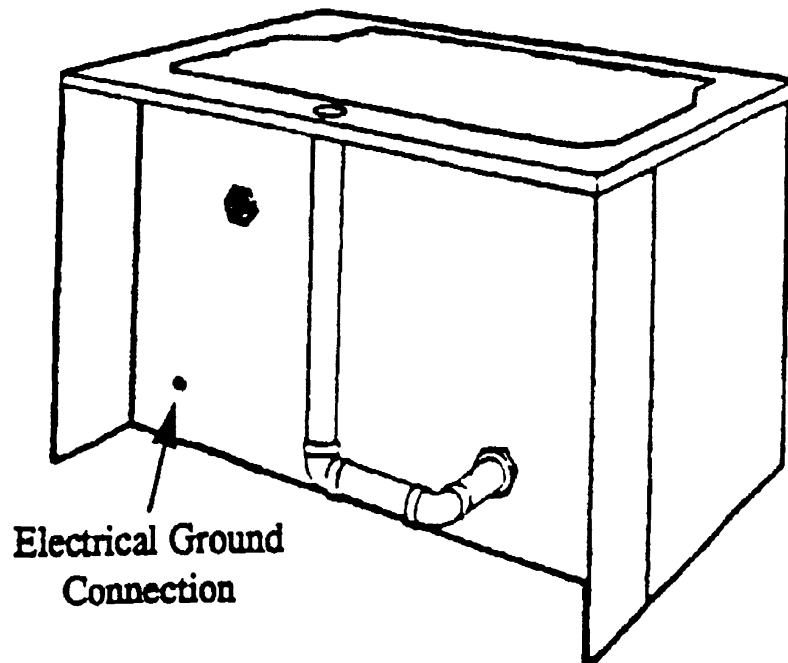


Dimensions Shown in Inches			
Hood Depth "B"	Hood Internal Depth "D"	Filler Panel Depth "E"	Work Surface Depth
33.19"	24"	8"	30"
39.19"	30"	14"	36"
45.19"	36"	20"	42"

Electrical Ground Connection – Solvent Storage Cabinet

Use the grounding screw located in the lower right hand corner on the back panel of your solvent storage cabinet to properly ground the cabinet structure. Remove the grounding screw and attach a grounding wire directly to the back of the cabinet at this point. Make sure you have a tight bond when you retighten the grounding screw.

S



A

Shelf Liner – Acid Storage Cabinet

Polyethylene liner trays have been included in your Acid Storage Cabinet for added chemical resistance. Place a shelf liner in the cabinet floor. The watertight tray collects spills and drips from bottles and containers stored within the cabinet.

S

Adjustable Shelf – Solvent Storage Cabinet

Remove the four shelf brackets included with the cabinet's leveling feet and place one bracket in each of the shelf positions located on the interior walls of the cabinet. Make sure that the shelf brackets are located at the same height to assure that the shelf will be level when placed in its working position. To install, simply squeeze the shelf bracket with pliers and place in the shelf positions of your cabinet.

V

Junction Box Connection – Vacuum Pump Storage Cabinet

Connect power to the electrical junction box, provided for the vacuum pump, through the back panel to the receptacle.

Environmental Conditions

This equipment is designed to be safe under the following conditions:

- Indoor use
- Altitude up to 6562 Ft. (2000m)
- Temperature 41° to 104° F (5° to 40°C)
- Maximum relative humidity 80% for temperatures up to 88°F (31°C) decreasing linearly to 50% relative humidity at 104°F (40°C)
- Main supply voltage fluctuations not to exceed $\pm 10\%$ of the nominal voltage
- Transient overvoltages according to Installation Categories II (Overvoltage Categories per IEC 1010)
- Pollution degrees 2, in accordance with IEC 664, normally only non-conductive foreign matter, solid, liquid, or gaseous (ionized gases), that may produce a reduction of dielectric strength or surface resistivity occurs. Occasionally, however, a temporary conductivity caused by condensation must be expected

CHAPTER 4

USING YOUR

STORAGE CABINET

After the Storage Cabinet has been installed as detailed in *Chapter 3: Getting Started*, you are ready to begin using it. Read this chapter to learn how to:

- Properly store and vent chemicals.
- Operate it in a safe manner.

Normal Operation

Although the Storage Cabinet is engineered to maintain the optimum in operator safety, caution should always be used while working with it. Good general housekeeping procedures with the following specific recommendations should allow you to operate your cabinet safely for years to come.

- Properly vent your storage cabinet to the outside atmosphere.
- It is not recommended to store solvents and acids in the same storage cabinet. For best results, use two separate storage cabinets to safeguard or protect these materials.

S

- Do not block open the door assembly on the solvent storage cabinet. This is an unsafe practice should a fire occur.
- Do not store flammable material in excess of the individual Solvent Storage Cabinet rating. Ratings are located on the nameplate of each Solvent Storage Cabinet.
- Do not block either vent connection as it will alter the airflow pattern in the cabinet and could interfere with ventilation of the cabinet.
- Always clean up spills immediately to prolong the life of your Storage Cabinet.

CHAPTER 5

MAINTAINING YOUR

STORAGE CABINETS

Under normal conditions, the Storage Cabinet requires little maintenance. The following maintenance schedule is recommended:

As Needed:

Remove liquid containers from cabinet and clean up spills.

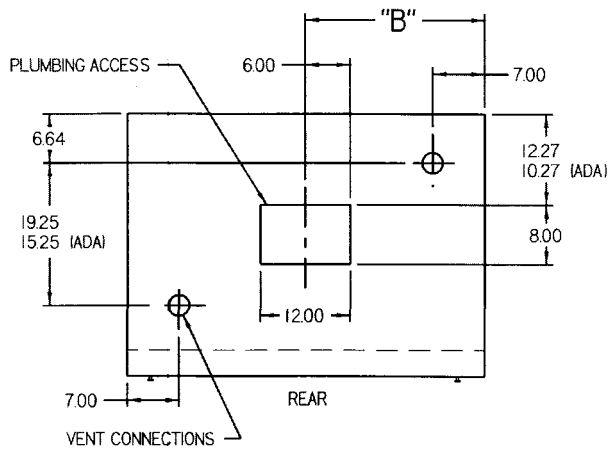
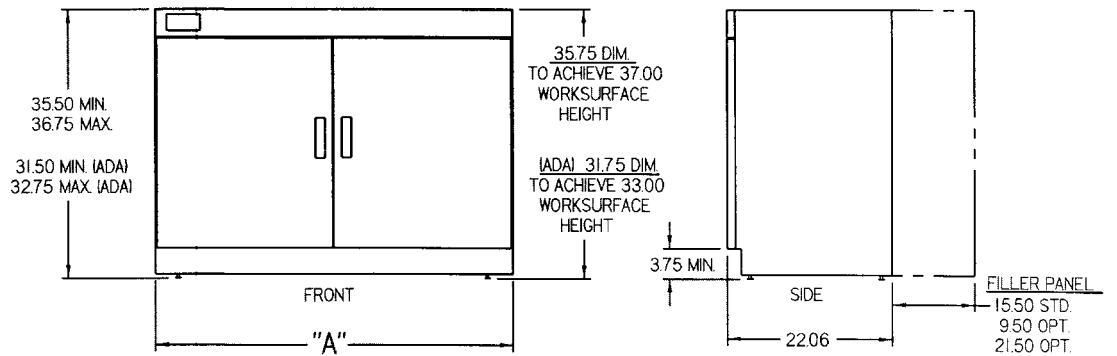
APPENDIX A

STORAGE CABINET

DIMENSIONS

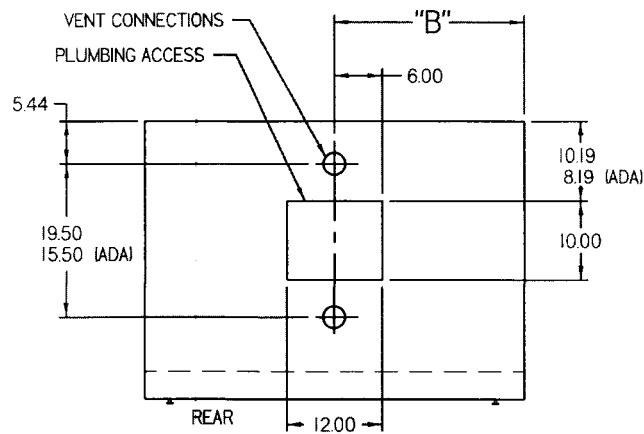
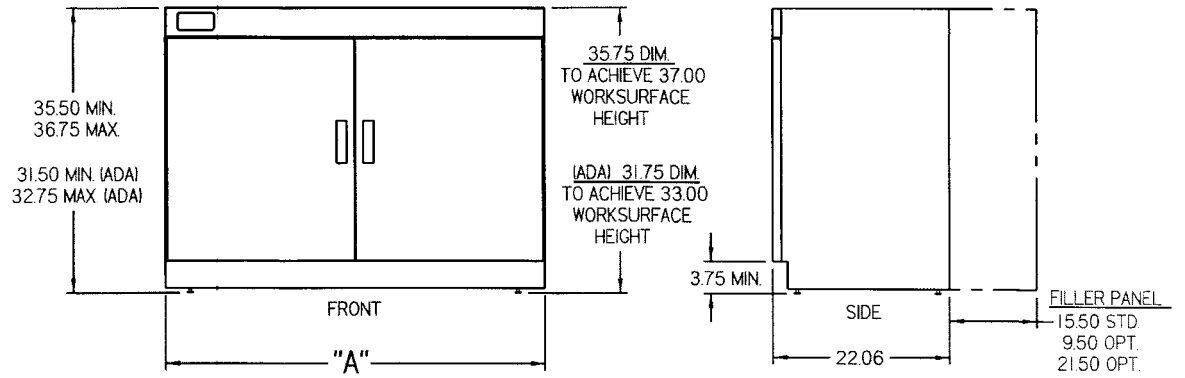
The following drawings provide dimensions for the Standard Base Cabinet, Acid Storage Cabinet, Solvent Storage Cabinet, and the Vacuum Pump Cabinet.

Protector Standard Base Cabinet



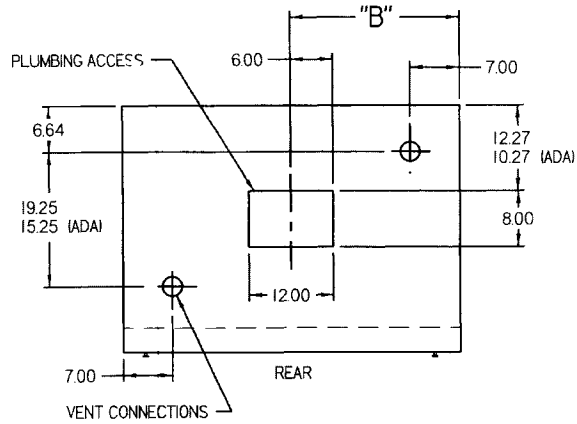
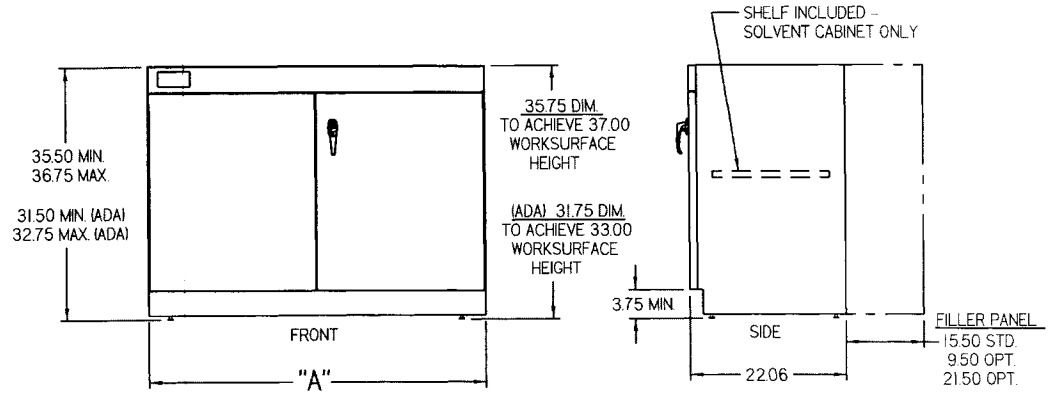
STANDARD BASE MODEL	DIM. "A"	DIM. "B"
48"	48"	24"
36"	36"	18"
30"	30"	15"
24"	24"	12"
18"	18"	9"
12"	12"	—
24" ADA	24"	12"
18" ADA	18"	9"
12" ADA	12"	—

Protector Acid Storage Cabinet



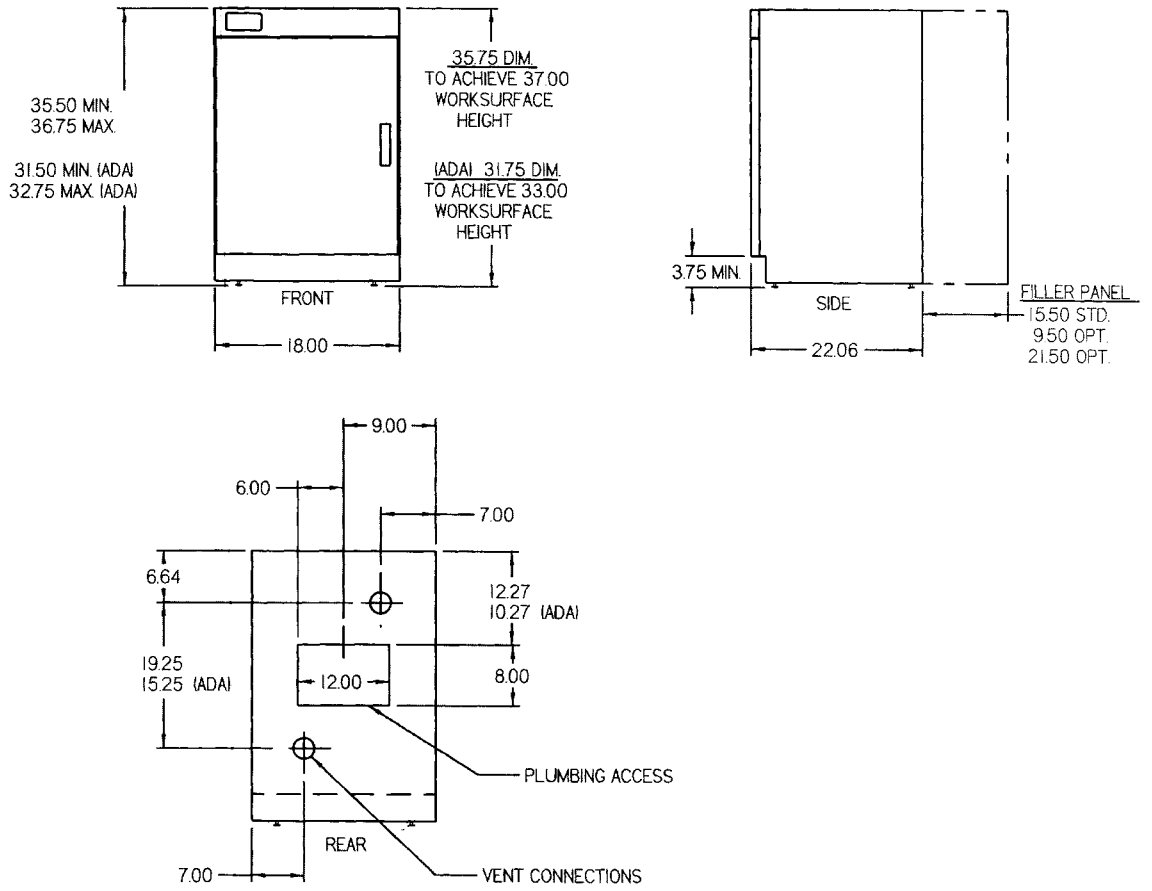
ACID MODEL	DIM. "A"	DIM. "B"
48"	48"	24"
36"	36"	18"
30"	30"	15"
24"	24"	12"
18"	18"	9"
24" ADA	24"	12"
18" ADA	18"	9"

Protector Solvent Storage Cabinet



SOLVENT MODEL	DIM. "A"	DIM. "B"
48"	48"	24"
36"	36"	18"
30"	30"	15"
24"	24"	12"
24" ADA	24"	12"

Protector Vacuum Pump Cabinet



APPENDIX B

STORAGE CABINET

REPLACEMENT

PARTS

The following pages list components that are typical replacement parts. If other parts are required, contact Product Service.

<u>Part #</u>	<u>Description</u>	<u>Cabinet Type</u>
1928300	Leveling Feet	All
1663600	Door Bumpers	All
1928400	Handle, Acid	All but Solvent
3598300	Lock Handle, Solvent	Solvent Only
1934500	Rotary Catch, Door Latch	All but Solvent
1930600	Shelf Support Clip, Solvent	Solvent Only
9921200	48" Adjusting Solvent Shelf	Solvent Only
9921201	36" Adjusting Solvent Shelf	Solvent Only
9921202	30" Adjusting Solvent Shelf	Solvent Only
9921203	24" Adjusting Solvent Shelf	Solvent Only
1933400	Bushing, Nylon – Door Hinge Support	All
9917100	Lower Hinge Assembly, Right	All
9717101	Lower Hinge Assembly, Left	All
9920700	Upper Hinge Pin	All
9922100	48" Lower Acid Polyethylene Tray	Acid Only
9922101	36" Lower Acid Polyethylene Tray	Acid Only
9922102	30" Lower Acid Polyethylene Tray	Acid Only
9922103	24" Lower Acid Polyethylene Tray	Acid Only
9922104	18" Lower Acid Polyethylene Tray	Acid Only

APPENDIX C

STORAGE CABINET

ACCESSORIES

The following accessories are available for the Storage Cabinets.

Vent Kit - Part No. 3591100

Vent Kit includes one PVC adapter, one PVC 90° elbow, locknut and one section of 2" diameter PVC pipe for venting the cabinet through a Protector® SpillStopper Work Surface and into a fume hood.



Shelf Kits for Acid Storage Cabinets -

These kits provide additional shelf, polyethylene tray, and mounting hardware.



48" 9919000
36" 9919001
30" 9919002
24" 9919003
18" 9919004

Shelf Kits for Standard Base Cabinets –

These kits provide additional shelf, and mounting hardware.



48" 9919100
36" 9919101
30" 9919102
24" 9919103
18" 9919104
12" 9919105

Work Surfaces

A

S

B

V

9727500	4' Work Surface Only, 30" Depth
9727501	5' Work Surface Only, 30" Depth
9727502	6' Work Surface Only, 30" Depth
9727503	8' Work Surface Only, 30" Depth
9727504	10' Work Surface Only, 30" Depth – Two Piece
9727505	12' Work Surface Only, 30" Depth – Two Piece
9727506	16' Work Surface Only, 30" Depth – Three Piece
9727507	4' Work Surface Only, 36" Depth
9727508	5' Work Surface Only, 36" Depth
9727509	6' Work Surface Only, 36" Depth
9727510	8' Work Surface Only, 36" Depth
9727511	10' Work Surface Only, 36" Depth – Two Piece
9727512	12' Work Surface Only, 36" Depth – Two Piece
9727513	16' Work Surface Only, 36" Depth – Three Piece
9727514	4' Work Surface Only, 42" Depth
9727515	5' Work Surface Only, 42" Depth
9727516	6' Work Surface Only, 42" Depth
9727517	8' Work Surface Only, 42" Depth
9727518	10' Work Surface Only, 42" Depth – Two Piece
9727519	12' Work Surface Only, 42" Depth – Three Piece
9727520	16' Work Surface Only, 42" Depth – Three Piece
9732000	4' HOPEC Work Surface
9732001	5' HOPEC Work Surface
9732002	6' HOPEC Work Surface
9732003	8' HOPEC Work Surface
9732004	4' HOPEC Work Surface with (1) cupsink cutout
9732005	5' HOPEC Work Surface with (1) cupsink cutout
9732006	6' HOPEC Work Surface with (1) cupsink cutout
9732007	8' HOPEC Work Surface with (1) cupsink cutout

Other Work Surfaces with cutout options are available. Contact Labconco Corporation for ordering.

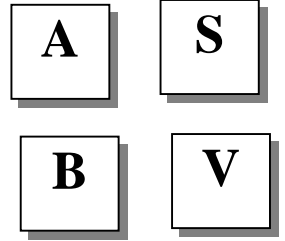
Self-Closing Doors for Solvent Storage Cabinets

S

9914700	Self-Closing Solvent Left Hinged Door Kit
9914701	Self-Closing Solvent Right Hinged Door Kit
9914702	Self-Closing Solvent Double Door Kit

Filler Panel Kits

- 9920300 Panel, Filler 24" for Interior depth Protector XL Fume Hood
- 9920301 Panel, Filler 30" for Interior depth Protector XL Fume Hood
- 9920302 Panel, Filler 36" for Interior depth Protector XL Fume Hood
- 9920303 Panel, Filler ADA 24" for Interior depth Protector XL Fume Hood
- 9920304 Panel, Filler ADA 30" for Interior depth Protector XL Fume Hood
- 9920305 Panel, Filler ADA 36" for Interior depth Protector XL Fume Hood
- 9920306 Panel, Filler Protector Fume Hood
- 9920307 Panel, Filler ADA Protector Fume Hood



*Individual kits contain one filler panel, filler panel angle, and mounting screws.

APPENDIX D

QUICK REFERENCE

STORAGE CABINETS

Size/Description	SOLVENT			ACID		
	Dual Doors	Right Hinge	Left Hinge	Dual Doors	Right Hinge	Left Hinge
48"	9902000	-	-	9901000	-	-
36"	9902100	-	-	9901100	-	-
30"	9902200	-	-	9901200	-	-
24"	-	9902300	9902400	-	9901300	9901500
18"	-	-	-	-	9901400	9901600
12"	-	-	-	-	-	-
48" w/Self Closing Doors	9903000	-	-	-	-	-
36" w/Self Closing Doors	9903100	-	-	-	-	-
30" w/Self Closing Doors	9903200	-	-	-	-	-
24" w/Self Closing Doors	-	9903300	9903400	-	-	-
24" ADA	-	9906000	9906100	-	9905000	9905200
24" ADA w/Self Closing Doors	-	9906200	9906300	-	-	-
18" ADA	-	-	-	-	9905100	9905300
12" ADA	-	-	-	-	-	-

Size/Description	STANDARD BASE			VACUUM PUMP		
	Dual Doors	Right Hinge	Left Hinge	Dual Doors	Right Hinge	Left Hinge
48"	9900000	-	-	-	-	-
36"	9900100	-	-	-	-	-
30"	9900200	-	-	-	-	-
24"	-	9900300	9900600	-	-	-
18"	-	9900400	9900700	-	9907000	9907100
12"	-	9900500	9900800	-	-	-
48" w/Self Closing Doors	-	-	-	-	-	-
36" w/Self Closing Doors	-	-	-	-	-	-
30" w/Self Closing Doors	-	-	-	-	-	-
24" w/Self Closing Doors	-	-	-	-	-	-
24" ADA	-	9904000	9904300	-	-	-
24" ADA w/Self Closing Doors	-	-	-	-	-	-
18" ADA	-	9904100	9904400	-	-	-
12" ADA	-	9904200	9904500	-	-	-

DECLARATION OF CONFORMITY

Application Council Directive(s): 73/23/EEC, 89/336/EEC

Standard(s) to which conformity is declared: EN61010, EN55022, EN50082-1

Manufacturer's Name: Labconco Corporation

Manufacturer's Address: 8811 Prospect Avenue
Kansas City, MO 64132 USA

Importer's Name: See Shipping/Customs Documents*

Importer's Address: See Shipping/Customs Documents for your equipment

Type of Equipment: Laboratory Equipment - Storage Cabinets

Model No.: 9900000 thru 9900800 Standard Base Cabinet
9904000 thru 9904500 ADA Standard Base Cabinet
9901000 thru 9901600 Acid Storage Cabinet
9905000 thru 9905300 ADA Acid Storage Cabinet
9902000 thru 9902400 Solvent Storage Cabinet
9903000 thru 9903400 Self Closing Solvent Storage Cabinet
9906000 thru 9906100 ADA Solvent Storage Cabinet
9906200 thru 9906300 ADA Self Closing Solvent Storage Cabinet
9907000 thru 9907100 Vacuum Pump Cabinet

Serial No.: Various – See Individual Declaration

Year of Manufacture: 1999 and Subsequent

I, the undersigned, hereby declare that the equipment specified above conforms to the above Directive(s) and Standard(s).

See individual Declaration of Conformity which will be signed by the importer for your country.

Place: _____
(Signature)

Date: _____
(Full Name)

(Position)

*An individual version of this declaration is included with your shipping/customs documentation.

For more information, please contact us:

ExpotechUSA
10700 Rockley Road
Houston, Texas 77099
USA

281-496-0900 [voice]

281-496-0400 [fax]

E-mail: sales@expotechusa.com

Website: www.ExpotechUSA.com