



Masters of the
Interactive Touch Display



The fine art of eye-catching engagement

The CTOUCH Laser, Leddura and Leddura XT ranges are the latest generation of interactive large format touch displays, designed to look great in the classroom, meeting room and public display areas.

The multi-touch surface opens the world of touch technology to large audiences increasing engagement, involvement and collaboration. Compatible with Windows, Mac and Linux platforms, the power of touch is available to everyone using a CTOUCH display.



Technology is only a benefit if it can be used as seamlessly as possible. At CTOUCH we have researched the market extensively so that only the best components are used in our displays which ensure that using them is as easy as possible. By combining the fastest reaction optical touch technology with super smooth, friction free anti-reflective glass, CTOUCH offers the best touch experience available today. This is our invisible technology concept which ensures users can concentrate on the presentation delivery without worrying about the technology.

Active IRO® technology makes CTOUCH the fastest and most accurate touch displays on the market. By combining multiple optical cameras with powered infrared reflectors and state-of-the-art vector software, CTOUCH ensures a smooth touch experience.



For education



CTOUCH Interactive Touch Displays make it easy to create effective, eye-catching teaching materials and promote a style of active, visual-based teaching and learning that makes the classroom fun for both the teacher and students.

Whole class learning

Interactivity creates a more meaningful, socially rich experience than spoken word tutorials alone.

Collaborative learning

Touch technology allows 'hands-on' manipulation of content, encouraging students to work collaboratively with their peers.

Interactive learning experience

Interactive displays provide the opportunity for students to engage directly during lessons.

Learning together

It also provides new opportunities to share accumulated knowledge through project based learning experiences.



For business



Whether you are imparting new skills or launching new methods and processes within your organisation, CTOUCH interactive displays can help you connect and share with colleagues, partners and customers.

Increased productivity

Keep everyone involved – exchanging ideas, participating in interactive presentations, reviewing documents, brainstorming and contributing to projects in real-time.

Enhanced collaboration

Encourage participants to engage, interact and work together during meetings, fostering communication, building teamwork and driving successful results for your organisation.

Efficient training

Engage attendees, assess understanding of key concepts and encourage full audience participation to elevate training efficiency.

Cost reduction

Save valuable time and money by distributing important information to colleagues and meeting attendees immediately, eliminating the need for typing up flipchart notes.



For retail



Shopping is no longer just about buying; it's about experiencing. CTOUCH interactive displays in a public environment enable retailers to bridge the gap between offline and online, improving brand experience and increasing customer engagement.

Empowered customers

Offer customers the convenience they want by introducing interactive wayfinding and information points to high traffic areas.

Relevant messaging

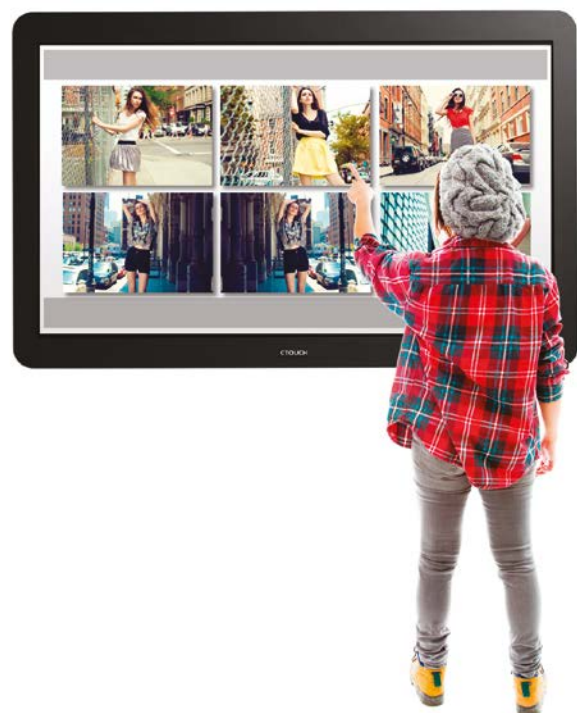
Display targeted interactive and engaging advertising messages. Team with digital signage software to immediately update poster sites and menu boards with time and event relevant information.

Improved efficiency

Improve customer experience by reducing queues and empowering shoppers and visitors. Enable online ordering, stock finding and inspire customers in the next generation of shops.

Multi-channel experience

Increase customer engagement and brand building by seamlessly bringing social media to the store environment. Enable crowd-sourced footage and social sharing.



Features



LED technology

With LED technology you can benefit from significantly reduced power consumption, up to 60% compared to LCD technology.

Four or ten point multi touch display

Four people can simultaneously write, perform mouse functions, erase and manipulate objects on the display. Displays are also available with 10 points of touch (10 point as standard on Laser and 84" models) for further enhanced collaboration.

Touch gestures

Use simple, intuitive hand and finger gestures to work with content, including one and two finger navigational gestures such as panning and flicking pages and objects. You can also configure your own personal gestures such as displaying the on-screen keyboard, toggling or minimising all applications to the desktop.

Toughened glass display

All CTOUCH displays feature 5mm toughened anti-glare or clear glass screens, designed to survive the demands of any environment.

Plug and Play capability with Windows, Mac and Linux

With no need to install drivers on Windows, Mac or Linux devices, installation and operation is quick and easy, even for first time users.

Long life, silent operation and minimal maintenance

Long life is assured by the typical 50,000 hours of panel usage, which equates to over 15 years of average day-to-day operation. CTOUCH displays have no cooling fans, eliminating the distracting noise often associated with projectors. Apart from cleaning the glass, minimal maintenance is required.

Full range of wall mounts, wall lifts and trolleys

All CTOUCH displays can be wall mounted in either landscape or portrait mode. A full range of wall lifts, trolleys and trolley lifts and tilting tables are also available.

Oktopus Collaboration Software

CTOUCH displays are now bundled with Oktopus Collaboration Software, which contains easy to use, interactive teaching tools to enhance collaboration, enable tablet integration and virtual voting. Featuring tool palettes that work alongside any application or web browser, Oktopus is designed to enhance lesson content and make learning even more interactive.

Comprehensive 7 year warranty

All CTOUCH displays are supplied with a five year on-site, de-installation/re-installation warranty to minimise downtime in the event of failure. This can be extended free of charge to seven years in total upon registration.

OPS PC slot

The Leddura XT models (65" and above) now feature as standard an OPS PC slot for integrating a computer into the display. Users will benefit from no unnecessary cabling, lower power consumption and reduced installation costs.

Optional soundbar

Enhance the use of video and audio in the classroom or boardroom with the CTOUCH Soundbar, available for 65", 70" and 84" Leddura XT models.



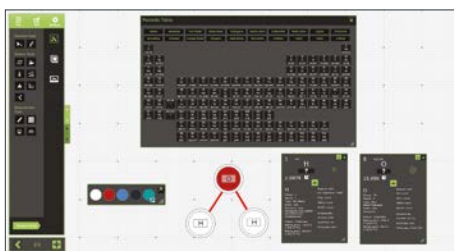
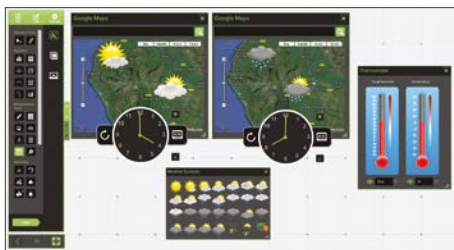
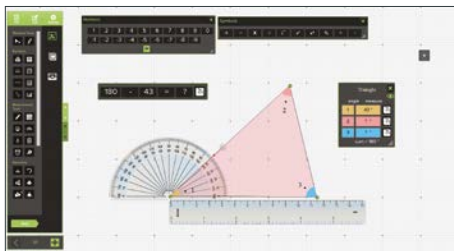
All CTOUCH displays come with a full range of software and accessories to maximise their use in operation and flexibility in installation.



Oktopus software

Oktopus makes it even easier for you to create engaging and dynamic lessons, with over 70 individual tools for learning, including geography, literacy, science and mathematics resources and a collection of floating tool palettes. Open as few or as many of the tools at any one time, select assets from a 3,400 strong media bank, combine online and offline content, create content 'on-the-move', quickly save/store lessons or share your content on the Oktopus share site.

Oktopus is different to any other interactive whiteboard software. Not only does it sit over your desktop, it also sits over any other application, such as Microsoft Office programs, video software, VLEs, existing teaching resources and websites. Oktopus allows users to move freely between applications and easily interweave offline and online content.



Standard Tools

14 Drawing Tools including pencil, highlighter, shapes, flashlight and line tool. Enter the media gallery and choose from over 3,000 images and animations. Tools to capture audio, video and static images plus an on-screen Keyboard.

Draw freehand, draw straight lines or highlight an area with the highlighter pen. Choose the colour, thickness and style. Erase all or part of your workings, magnify, or use the torch tool. Capture screen images, record audio and video. Access the image bank, build your own image bank and use floating keyboard.

Other Features:

Cross Platform

Oktopus is available for Windows, Mac OS X and Linux.

Multi-purpose

Diverse uses including presentations for business conferences, teaching in education and training for business.

Stores user settings

Oktopus stores your settings such as the tool layouts and menus on stage, so everything is as you left it.

Ease-of-use

Oktopus's simplistic design makes it accessible to users of all ages and levels of computer literacy.

Fits any screen resolution

Oktopus content works on any screen resolution, no matter what screen size it was created on.

Extendable

Oktopus can be extended with new toolsets adding new possibilities for content creation.

Oktopus at a glance



Multi-purpose

1. Annotate over ANY application or web browser.
2. Share and collaborate over documents.
3. Present to any audience, in corporate and learning environments.
4. Poll entire audiences and collect valuable feedback instantly.



Multi-touch and multi-pen

Enhanced multi-pen and multi-touch capabilities means users can simultaneously use and manipulate tools.



Cross Platform

Available for Windows, Mac OS X, and Android devices.



Collaborative

Participants can view live lessons, respond, share, take notes, and save presentations for review, using any tablet or laptop.



Available in 42 languages

Including English, Spanish, French, German, Portuguese, Italian, Japanese, Arabic, Chinese, Hebrew, Danish, Korean...



Easy to use

The simplistic design makes it accessible to users of all ages and levels of computer literacy. Multi-disciplined interface with over 70 interactive tools to create unique and powerful presentations. Our unique Quick Tool Palette allows for rapid presentation building.

Extras

To enhance the interactive experience on your CTOUCH display, we offer a host of connectivity, sound and mounting options. The all-in-one OPS PC module and 90 watt soundbar are the ideal additions to Leddura XT displays, and versatile mounting options ensure your display is the ideal fit for any setting. All CTOUCH displays can be wall, trolley or table mounted with a choice of fixed height and adjustable stands.



Connectivity

Wired, wireless or integrated intelligence

Using a CTOUCH OPS all-in-one PC module brings an end to loose components and annoying cables. Anyone can easily access, connect and present from a CTOUCH display with incredible performance and reduced power consumption.



Sound

Experience sound in its unique way

The CTOUCH Soundbar is a first class addition to the Leddura XT interactive displays, boasting 90 watts of crystal clear sound. The Soundbar gives optimal digital sound experience with ergonomic in-bezel docking.



	CTOUCH [®] Leddura 55"	CTOUCH [®] LASER 60"	CTOUCH [®] LASER 65"
Display Resolution	1920 x 1080 (Full HD)	1920 x 1080 (Full HD)	1920 x 1080 (Full HD)
Multi Touch Points	4 or 10	10	10
Display Glass	5mm toughened anti reflective glass housed in a steel frame for durability		
Power Consumption	<0.5W - 144W	<0.5W - 200W	<0.5W - 250W
Weight	55kg	62kg	70kg
Connectivity	HDMI x2, USB, RGB, Component, Composite video, S-Video, RS232	HDMI x2, USB, RGB, Component, Composite video, S-Video, RS232	HDMI x2, USB, RGB, Component, Composite video, S-Video, RS232
Soundbar Connectivity	No	No	No
OPS PC compliant	No	No	No
Software Applications included	Oktopus Collaboration Software		
Product Accessories included	Power, HDMI & USB cables. Remote control & batteries, magnetic stylus pen, user manual.		
Warranty	7 year on-site, de/re installation warranty (upon registration, terms and conditions apply).		



Support

Support and training when you need it

CTOUCH products are simple and intuitive to use, but if you do need some help, we're on hand to assist. We also offer various training courses to ensure you get the most out of your display.



Mounting


Smooth easy operation suits all ages

Whether you require a fixed wall mounting solution, an electrically adjustable or mobile solution or even a table solution, all CTOUCH displays offer flexible, easy to install and operate mounting solutions.



CTOUCH [®] Leddura ^{XT} 65"	CTOUCH [®] LASER 70"	CTOUCH [®] Leddura ^{XT} 70"	CTOUCH [®] LASER 84"	CTOUCH [®] Leddura ^{XT} 84"
1920 x 1080 (Full HD)	1920 x 1080 (Full HD)	1920 x 1080 (Full HD)	3840 x 2160 (Ultra HD/4K)	3840 x 2160 (Ultra HD/4K)
4 or 10	10	4 or 10	10	10
5mm toughened anti reflective glass housed in a steel frame for durability				
<0.5W - 250W	<0.5W - 300W	<0.5W - 240W	<0.5W - 440W	<0.5W - 440W
70kg	78kg	78kg	110kg	110kg
HDMI x3, Display Port, USB, RGB, Component, Composite video, RS232	HDMI x2, USB, RGB, Component, Composite video, S-Video, RS232	HDMI x3, Display Port, USB, RGB, Component, Composite video, RS232	HDMI x2, USB, RGB, Component, Composite video, S-Video, RS232	HDMI x4, Display Port, USB, RGB, Component, Composite video, RS232
Yes	No	Yes	No	Yes
Yes	No	Yes	No	Yes
Oktopus Collaboration Software				
Power, HDMI & USB cables. Remote control & batteries, magnetic stylus pen, user manual.				
7 year on-site, de/re installation warranty (upon registration, terms and conditions apply).				



 @rapidtechtoday

 www.youtube.com/user/MrRapidTechnologies



rapid.co.uk
0800 195 0938
sales@rapid.co.uk

