

RADIOMODEM & RTU

D5 Series



ERE SRL

Via Ermanno Ge, 9/11 | I - 27049 Stradella (PV)

Phone +39 0385 48139 | Fax +39 0385 40288

e-mail: info@erewireless.com

website: www.erewireless.com

Table of contents

Table of contents	2
Disclaimer	3
Technical support	3
Restrictions on use.....	3
Technical specification	5
Conformity declaration	7
Warranty - Liability of the Product	9
Warnings and safety instructions.....	10
Disposal of waste by users in private households within the European Union.....	10
General description.....	11
Installation	13
<i>Mechanical</i>	13
<i>Electrical (wiring)</i>	13
<i>Antenna</i>	14
Configuration	15
<i>System requirements</i>	15
<i>Configuration by USB port with C200-800E (DC485USB) converter</i>	15
<i>Function of the Buttons common to all modes</i>	15
<i>MIRROR MODE</i>	16
<i>MODBUS LOW ENERGY</i>	19
<i>MODUBUS</i>	23
<i>RADIOMODEM</i>	28
<i>LINK TEST</i>	32

Disclaimer

All rights to this manual are owned solely by ERE Srl (referred to in this user guide as ERE). All rights reserved. The copying of this manual (without the written permission from the owner) by printing, copying, recording or by any other means, or the full or partial translation of the manual to any other language, including all programming languages, using any electrical, mechanical, magnetic, optical, manual or other methods or devices is forbidden.

ERE reserves the right to change the technical specifications or functions of its products, or to discontinue the manufacture of any of its products or to discontinue the support of any of its products, without any written announcement and urges its customers to ensure, that the information at their disposal is valid.

ERE software and programs are delivered "as is". The manufacturer does not grant any kind of warranty including guarantees on suitability and applicability to a certain application. Under no circumstances is the manufacturer or the developer of a program responsible for any possible damages caused by the use of a program. The names of the programs as well as all copyrights relating to the programs are the sole property of ERE. Any transfer, licensing to a third party, leasing, renting, transportation, copying, editing, translating, modifying into another programming language or reverse engineering for any intent is forbidden without the written consent of ERE.

Technical support

Our website www.erewireless.com contains many useful information, user guides and configuration software and technical documents always update to the latest version.

If you have technical problems or cannot find the required information in the provided documents, contact our Technical Support by email at info@erewireless.com or by phone +39 0385 48139

Restrictions on use

ERE PRODUCTS HAVE NOT BEEN DESIGNED, INTENDED NOR INSPECTED TO BE USED IN ANY LIFE SUPPORT RELATED DEVICE OR SYSTEM RELATED FUNCTION NOR AS A PART OF ANY OTHER CRITICAL SYSTEM INCLUDED AERONAUTICAL / AEROSPACE APPLICATION.

ERE PRODUCTS ARE GRANTED NO FUNCTIONAL WARRANTY IF THEY ARE USED IN ANY OF THE APPLICATIONS MENTIONED.

ERE D5 Series radio modems have been designed to operate on frequency ranges as SRD (Short Range Device), the exact use of which differs from one region and/or country to another. The user of a radio modem must take care that the device is not operated without the permission of the local authorities on frequencies other than those specifically reserved and intended for use without a specific permit.

ERE D5 Series are allowed to be used in the following countries with E.R.P. and duty cycle limitation, either on licence free channels or on channels where the operation requires a licence. More detailed information is available at the local frequency management authority.

Allowed use according to ERC Recommendation 70-03						
Model	Frequency (MHz)	Annex (¹)	E.R.P (²)	Duty Cycle (³)	Country allowed	Country with restriction of use
510	169,400 - 169,475	1e1	≤ 500 mW	≤ 1 %	AUT-BEL-BUL-CZE-CYP-DNK-	GEO-RUS-UKR-BLR
510	169,400 - 169,475	2b	≤ 500 mW	≤ 10 %	EST-FIN-F-D-HRV-GRC-	HOL-GEO-RUS-BLR-UKR
540	863,000 - 870,000	1g1	≤ 25 mW	≤ 0.1 %	HNG-ISL-IRL-I-LVA-LIE-LTU-LUX-MLT-	GRC-NOR-SVN-E-S-GEO-RUS-BLR-UKR
540	868,000 - 868,600	1g1.1	≤ 25 mW	≤ 1 %	HOL-NOR-POL-POR-ROU-SVK-	GEO-RUS-BLR-UKR
540	868,700 - 869,200	1g1.2	≤ 25 mW	≤ 0.1 %	SVN-E-SUI-S-G-AND-ALB-	GEO-BLR-UKR
540	869,400 - 869,650	1g1.3	≤ 500 mW	≤ 10 %	AZE-BIH-BLR-GEO-MDA-	GEO-RUS-BLR-UKR
540	869,700 - 870,000	1g1.4	≤ 5,0 mW	≤ 100 %	MKD-MNE-RUS-SRB-TUR-UKR	GEO-RUS-BLR-UKR

NOTE:

Before to install the device check always the latest version of ERC Recommendation 70-03 in order to verify any restriction and limitation in terms of E.R.P and Duty Cycle

(¹) Annex 1.xxx refer to SRD (Short Range Device), Annex 2 refer to Tracking, Tracing and Data Acquisition.

(²) E.R.P. = Max Effective Radiated Power allowed from radiomodem and associated antenna takes into consideration transmitter power output, transmission line attenuation, RF connector insertion losses and antenna gain

(³) Duty Cycle is defined as the ratio, expressed as a percentage, of the maximum transmitter “on” time on one carrier frequency, relative to a one hour period

Technical specification

Operating data		
Label	Description	Value
V_S (EXT)	Power supply, voltage range	9,0 → 32 Vdc
P_S (EXT)	Max power	max. 20 W
V_{BATT}	Battery voltage	3,3 → 4,8 Vdc
I_{BATT}	Max current from battery	max. 3,3 Adc
I_{Sleep}	Sleeping current (Power Off)	≤ 8 μ A
I_{OSW}	Max current available at pin 2 of JP1	≤ 1,80 Adc
V_{SHDN_LOW}	Low level Shutdown input	≤ 0,20 Vdc
V_{SHDN_HIGH}	High level Shutdown input	≥ 2,50 Vdc
$t_{SHDN\ \uparrow/\downarrow}$	Max time on/off using Shutdown input (Soft start/stop)	≤ 60 / 30 msec
I_{SHDN_LOW}	Low level Shutdown input current	≤ - V_S / 220 (μ A)
P_{RF}	RF transmission power	500 ± 75 mW
RX_{SENS}	Receiver sensitivity	≤ -105 ± 3 dBm
RF_{MOD}	Modulation mode	***F1D
CH	Channels spacing	12,5 - 25 - 50 kHz
BR Radio	Baud Rate on radio channel	4.800 - 9.600 - 19.200 bps
$Z_{I/O\ ANT}$	Antenna impedance	50 Ω
V_{RST_LOW}	Low level Reset input	≤ 0,90 Vdc
V_{RST_HIGH}	High level Reset input	≥ 2,10 Vdc
I_{RST_LOW}	Low level Reset input current	≤ - 115 μ A ⁽¹⁾
t_{RST_LOW}	Minimum time to hold down for Reset input	≥ 1 msec
V_{CONFIG_LOW}	Low level Config input	≤ 0,60 Vdc
V_{CONFIG_HIGH}	High level Config input	≥ 2,40 Vdc
I_{CONFIG_LOW}	Low level Config input current	≤ - 115 μ A ⁽¹⁾
t_{CONFIG_LOW}	Minimum time to hold down the Config input	≥ 5 secondi
$V_{DIG-INP_LOW}$	Low level digital inputs	≤ 0,60 Vdc
$V_{DIG-INP_HIGH}$	High level digital inputs	≥ 2,40 Vdc
$I_{DIG-INP_LOW}$	Low level digital inputs current	≤ - 2,8 μ A ⁽¹⁾
$t_{DIG-INP\ \downarrow/\uparrow}$	Minimum time to hold low/high the digital inputs	≥ 85 / 750 msec
V_{CNT-I_LOW}	Low level counter input	≤ 0,90 Vdc
V_{CNT-I_HIGH}	High level counter input	≥ 2,10 Vdc
I_{CNT-I_LOW}	Low level counter input current	≤ -2,50 μ A ⁽¹⁾
$T_{CNT-I\ \downarrow/\uparrow}$	Minimum time to hold low/high for counter input	≥ 20 / 47 msec
$F_{MAX\ CNT-I}$	Max frequency on counter input	≤ 10 Hz
$I_{A,B\ LINES}$	Max current out at RS-485 serial port	± 60 mA
BR DTE	Baud Rate RS-485 serial port	1.200 → 57.600 bps
V_{AN-OUT}	Min/max voltage on analog outputs	8,5 → 32,0 Vdc
$I_{O\ AN-OUT}$	Range of current on analog outputs	0 → 20 mA
V_{AN-INP}	Voltage range at the analog inputs	0 → 3,50 Vdc
$Z_{I\ AN-INP}$	Analog input resistance	173,5 ± 1,5 Ω
$V_{+18V-OUT}$	Voltage +18 Vdc output	18,0 ± 0,1 Vdc
$I_{+18V-OUT}$	Max current at +18 Vdc output	200 mAdc

NOTE:

⁽¹⁾ Pull-up current

WARNING

Exceed the maximum operating value below (continuous and/or temporary) can damage the device

Maximum operating data		
Label	Description	Value
V _{S(EXT)}	Max power supply voltage	32 Vdc
V _{BATT}	Max battery voltage	5 Vdc
V _{DIG-INP}	Digital inputs max DC voltage on	± 12 Vdc
V _{P DIG-INP}	Digital inputs max peak voltage	± 32 Vdc
V _{SHDN}	Shutdown input max DC voltage	32 Vdc
V _{P SHDN}	Shutdown input max peak voltage	32 Vdc
V _{CONFIG}	CONFIG and RESET inputs max DC voltage	± 12 Vdc
V _{P CONFIG}	CONFIG and RESET inputs max peak voltage	± 32 Vdc
V _{DIG-OUT}	Digital outputs, max voltage	32 Vdc / 32 Vac
V _{INS DIG-OUT}	Digital outputs, max voltage referred to ground	32 Vdc / 32 Vac
V _{AN-OUT}	Analog outputs, max voltage	32 Vdc
V _{INS AN-OUT}	Analog outputs, max voltage referred to ground	32 Vdc / 32 Vac
V _{AN-INP}	Analog inputs, max voltage	± 5 Vdc
V _{P AN-INP}	Analog inputs, max peak voltage ⁽¹⁾	± 10 Vdc
V _{P RS-485}	Max peak voltage at the ports A/B RS-485 ⁽¹⁾	± 32 Vdc
I _{OSW}	Max output current available the pin 2 of JP1 ⁽²⁾	2,6 A
I _{O +18V}	Max current available at +18V aux outputs (overall)	260 mA
I _{O AN-OUT}	Analog outputs, max current	32 mA
I _{O DIG-OUT}	Digital outputs, max current	1 Adc / 700 mAac
I _{A,B LINES}	Max current out at the A/B RS-485	± 200 mA
T _{OPERATING}	Operating temperature range	-30°C +60 °C
T _{STORAGE}	Storage temperature range	-40°C +85 °C

NOTE:

⁽¹⁾ Impulse time < 100 millisecond.

⁽²⁾ With the equipment in sleep mode

Conformity declaration

English: Hereby, ERE S.r.l. declares that this D5 SERIES is in compliance with the essential requirements and other relevant provisions of Directive 1999/5/EC.

Finnish: ERE S.r.l. vakuuttaa täten että D5 SERIES tyyppinen laite on direktiivin 1999/5/EY oleellisten vaatimusten ja sitä koskevien direktiivin muiden ehtojen mukainen.

Dutch: Hierbij verklaart ERE S.r.l. dat het D5 SERIES in overeenstemming is met de essentiële eisen en de andere relevante bepalingen van richtlijn 1999/5/EG. Bij deze verklaart ERE S.r.l. dat deze D5 SERIES voldoet aan de essentiële eisen en aan de overige relevante bepalingen van Richtlijn 1999/5/EC.

French: Par la présente ERE S.r.l. déclare que l'appareil D5 SERIES est conforme aux exigences essentielles et aux autres dispositions pertinentes de la directive 1999/5/CE. Par la présente, ERE S.r.l. déclare que ce D5 SERIES est conforme aux exigences essentielles et aux autres dispositions de la directive 1999/5/CE qui lui sont applicables

Swedish: Härmed intygar ERE S.r.l. att denna D5 SERIES står i överensstämmelse med de väsentliga egenskapskrav och övriga relevanta bestämmelser som framgår av direktiv 1999/5/EG.

Danish: Undertegnede ERE S.r.l. erklærer herved, at følgende udstyr D5 SERIES overholder de væsentlige krav og øvrige relevante krav i direktiv 1999/5/EF

German: Hiermit ERE S.r.l., dass sich dieses D5 SERIES in Übereinstimmung mit den grundlegenden Anforderungen und den anderen relevanten Vorschriften der Richtlinie 1999/5/EG befindet". (BMWi). Hiermit erklärt ERE S.r.l. die Übereinstimmung des Gerätes D5 SERIES mit den grundlegenden Anforderungen und den anderen relevanten Festlegungen der Richtlinie 1999/5/EG. (Wien)

Greek: ΜΕ ΤΗΝ ΠΑΡΟΥΣΑ ΕΡΕ S.r.l. ΔΗΛΩΝΕΙ Δ5 SERIES ΣΥΜΜΟΡΦΩΝΕΤΑΙ ΠΡΟΣ ΤΙΣ ΟΥΣΙΩΔΕΙΣ ΑΠΑΙΤΗΣΕΙΣ ΚΑΙ ΤΙΣ ΛΟΙΠΕΣ ΣΧΕΤΙΚΕΣ ΔΙΑΤΑΞΕΙΣ ΤΗΣ ΟΔΗΓΙΑΣ 1999/5/ΕΚ

Italiano: Con la presente ERE S.r.l. dichiara che D5 SERIES è conforme ai requisiti essenziali ed alle altre disposizioni pertinenti stabilite dalla direttiva 1999/5/CE.

Spanish: Por medio de la presente ERE S.r.l. declara que el D5 SERIES cumple con los requisitos esenciales y cualesquiera otras disposiciones aplicables o exigibles de la Directiva 1999/5/CE

Portuguese: ERE S.r.l. declara que este D5 SERIES está conforme com os requisitos essenciais e outras disposições da Directiva 1999/5/CE.

Declaration of Conformity

We, the undersigned,

Company	ERE S.r.l.
Address, City	Via Ermanno Ge, 9/11 - 27049 Stradella (PV)
Country	Italy
Phone number	+39 0385 48139
Fax number	+39 0385 40288

certify and declare under our sole responsibility that the following equipment:

Product description / Intended use	169 MHz and 868 MHz Radiodem and RTU for commercial and light-industrial use
EU / EFTA member states intended for use	EU: all members EFTA: all members
Member states with restrictive use	EU: all members EFTA: all members
Manufacturer	ERE S.r.l. I-27049 Stradella (PV)
Brand name	ERE
Type/Model	D5 SERIES

is tested to and conforms with the essential requirements for protection of health and the safety of the user and any other person and Electromagnetic Compatibility, as included in following standards:

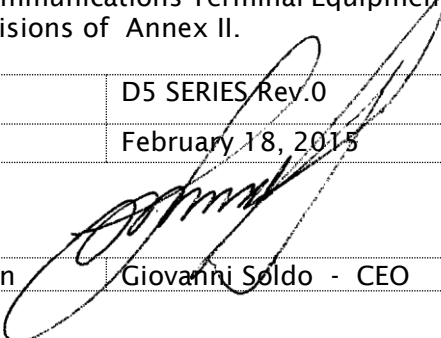
Art. of Directive	Standard	Date of issue of the standard
3.1(a) Health	EN 61000-6-1	2007
3.1(a) Health	EN 61000-6-3	2007 + A1(2011)
3.1(a) Health	EN 50401	2006 + A1(2011)
3.1(a) Safety	EN 60950-1	2006 + A11:2009 + A1:2010 +A12:2011 +AC:2011
3.1(b) EMC	EN 301 489-1	V1.9.2 (2011-09)
3.1(b) EMC	EN 301 489-3	V1.6.1 (2013-08)

and is tested to and conforms with the essential radio test suites so that it effectively uses the frequency spectrum allocated to terrestrial/space radio communication and orbital resources so to as to avoid harmful interference, as included in following standards:

Art. of Directive	Standard	Date of issue of the standard
3.2 Spectrum	EN 300 220-2	V2.4.1 (2012-05)

and therefore complies with the essential requirements and provisions of Art. 3.3 too, where applicable, of the **Directive 1999/5/EC** of the European Parliament and of the council of March 9, 1999 on Radio equipment and Telecommunications Terminal Equipment and the mutual recognition of their conformity and with the provisions of Annex II.



TCF reference nr.	D5 SERIES Rev.0
Date	February 18, 2015
Sign	
Name and position	Giovanni Soldo - CEO

Warranty - Liability of the Product

Supplier represents and warrants that products are manufactured in accordance with the applicable specifications and are free from defects in materials and workmanship. The warranty, valid for a period of 12 months of use, maximum 18 months from the date of delivery, shall not cover defects caused by accident, Buyer's negligence, improper use or maintenance or by any other reason beyond Supplier's control.

Buyer shall have 10 (ten) working days following receipt of products to inspect the products and to notify to Supplier in writing any defects or non-compliance. In the event that any shipment of products is not accepted by Buyer due to any non-conformity with the specifications, or as a result of a cause occurred prior to placement thereof with the carrier, Buyer shall, if so indicated in writing by the Supplier, promptly return some samples or the full shipment that was rejected by Buyer at Buyer's costs.

Supplier, at its own discretion, shall, within a reasonable period, considering the entity of the complaint: (i) send a replacement shipment of products conforming, or (ii) credit Buyer a sum equal to the value of the defective or non-conforming products. This warranty overwrites all legal warranties for defects and compliance and exempts Supplier from any other responsibility for the supplied products; in particular, Buyer shall not be entitled to any requests for compensation or price reductions.

If one of the products sold by the Supplier to the Buyer is defective, the Buyer will send it, at its own expense, at the headquarters of the Italian Supplier. The product will be repaired or replaced by the Supplier, at no costs to the Buyer.

The Buyer will pay all the shipping costs for the product repaired or replaced and sent back to the Buyer.

The Buyer will bear all costs related to disassembly, assembling and transportation of the product, and any damage caused by the "machinery inactivity".

Supplier shall indemnify Buyer against any liability of the products claims asserted by third parties relating to damages sustained as a result of a defective products. In such case Supplier shall reimburse Buyer exclusively within the limits, terms and conditions of the products liability insurance policy held by Supplier. Buyer shall not make any oral or written representations which vary from the specifications, operating instructions, labels or representations given or made by Supplier with respect to the products. If any liability is incurred because of such varying representations, Buyer holds Supplier harmless with respect to any such representations.

In no event shall Supplier be liable for any indirect, incidental, exemplary or consequential damages, including without limitation any claim for damages based on lost revenues or profits, however caused.

In no event shall the Supplier be liable for any costs or damages arising from any act or omission of Buyer, including, without limitation, relating to the modification, handling, storage and marketing of Products by Buyer or to Buyer's failure to provide its employees, agents and customers or other third parties with adequate instruction as to the proper handling and use of Products.

In this respect we hereby confirm that our products are not designed for nuclear applications neither for aircraft/aerospace industries. For the above mentioned applications both warranty and insurance coverage do not apply.

Warnings and safety instructions

- Read these safety instructions carefully before using the product:
- Warranty will be void, if the product is used in any way that is in contradiction with the instructions given in this manual, or if the radio modem housing has been opened or tampered with.
- The radio modem is only to be operated at frequencies allocated by local authorities, and without exceeding the given maximum allowed output power ratings and duty cycle. ERE and its distributors are not responsible, if any products manufactured by it are used in unlawful ways.
- The devices is complies with Directive 1999/5/EC as describe in our declaration of conformity above
- The devices mentioned in this manual are to be used only according to the instructions described in this manual. Faultless and safe operation of the devices can be guaranteed only if the transport, storage, operation and handling of the devices is appropriate. This also applies to the maintenance of the products.
- Do not install the equipment close to a heat source or in damp conditions and direct sunlight is also to be avoided.
- The device must not be exposed to aggressive chemical agents or solvents likely to damage the plastic or corrode the metal parts.
- The device must not be exposed directly to dusty environment.
- Maintenance should only be carried out by qualified persons.
- For your own safety, you must ensure that the equipment is switched off before carrying out any work on it.
- Any electrical connection of the product must be equipped with a protection device against voltage spikes and short-circuits

Disposal of waste by users in private households within the European Union



According to Directive 2012/19/EU of the European Union on waste electrical and electronic equipment (WEEE) this product must not be disposed off with your other household waste, it is your responsibility to dispose of your waste by taking it to a collection point designated for the recycling of electrical and electronic appliances.

Separate collection and recycling of your waste at the time of disposal will contribute to conserving natural resources and guarantee recycling that respects the environment and human health.

For further information concerning your nearest recycling centre, please contact your nearest local authority/town hall offices.

General description

D5 Series radiomodems with RTU function, feature 4 digital inputs, 2 digital relay outputs, 2 analog inputs, 2 analog outputs, an RS-485 serial interface, and a counter input; all of which are software configurable. The embedded inputs and outputs allow the D5 Series radiomodem to be used in data acquisition and remote control applications.

D5 Series has 4 operating modes that are software programmable: radiomodem, mirror point to point, Modbus slave, or Modbus master, allowing greater flexibility in the field.

D5 Series uses routing tables to obtain fewer collisions in complex networks and D5 can also be used as a Modbus hub, allowing 8 Modbus modules (inputs and/or outputs) to be connected through the RS-485 port. (D5 will power these modules).

Data Encryption 128bit AES (Advanced Encryption Standard) ensures transmitted data security.

A power-saving function is built in, to activate inputs only when required, allowing for extended battery life.

Function available for each operating mode.

Yes= you can choose and/or modify the function

No = the function doesn't exist or is not enabled

	Operating mode						
	Radio modem	ModBus Standard		ModBus Low Energy		Mirror	
		Master	Slave	Master	Slave	Master	Slave
Radio							
Channel spacing	Yes	Yes	Yes	Yes	Yes	Yes	Yes
RF channel	Yes	Yes	Yes	Yes	Yes	Yes	Yes
Frequency Agility	Yes	Yes	Yes	Yes	Yes	Yes	Yes
Listen Before Talk	Yes	Yes	Yes	No	No	No	No
RF power	Yes	Yes	Yes	Yes	Yes	Yes	Yes
Serial Port RS485							
Bit Rate	Yes	Yes	Yes	Yes	Yes	No	Yes
Parity bit	Yes	Yes	Yes	Yes	Yes	No	Yes
DTX Time	Yes	Yes	Yes	Yes	Yes	No	Yes
Auxiliary							
LED I/O	Yes	Yes	Yes	Yes	Yes	Yes	Yes
+18 Vdc ON/OFF	Yes	Yes	Yes	Yes	Yes	Yes	Yes
Safety option	Yes	Yes	Yes	No	No	Yes	Yes
Contact of relè selectable NC/NO	Yes	Yes	Yes	No	No	Yes	Yes

Input & Output							
Digital inputs	Yes (n° 2)	No	Yes (n° 4)	Yes (n° 4)	No	Yes (n° 2)	Yes (n° 2)
Digital outputs	Yes (n° 2)	No	Yes (n° 2)	Yes (n° 2)	No	Yes (n° 2)	Yes (n° 2)
Counter input	No	Yes	Yes	No	No	No	No
Analog inputs	No	Yes (n° 2)	Yes (n° 2)	Yes (n° 2)	No	Yes (n° 2)	Yes (n° 2)
Analog outputs	No	Yes (n° 2)	Yes (n° 2)	Yes (n° 2)	No	Yes (n° 2)	Yes (n° 2)
Data							
AES encryption	Yes	Yes	Yes	Yes	Yes	No	No
Routing Table	Yes, 1 route	Yes, 255 route	No	Yes, 1 route	No	Yes, 1 route	Yes, 1 route
Broadcasting	Yes	No	No	No	No	No	No
Address from DTE	Yes	No	No	No	No	No	No
Address to DTE	Yes	No	No	No	No	No	No
Rx address for Tx	Yes	No	No (active low)	No	No No (active low)	No	No
Request of ACK	Yes	No	No	No	No	No	No
Set number of retries	Yes (max. 255)	No	No	Yes (max. 255)	No	No	No
NAK to DTE	Yes	No	No	No	No	No	No
Other							
Diagnostic	Yes	No	No	No (always active)	No (always active)	No	Yes
Power Save	Yes	Yes	Yes	No	No	No	No
Link Test	Yes	No	No	No	No	No	No

Installation

Mechanical

The device must be installed in a location that is sufficiently ventilated so that there is no risk of internal heating. Place the device against a flat, firm and stable surface. It is not recommendable to install the radio modem on a strongly vibrating surface. Suitable dampening and/or isolation materials should be used in cases where the installation surface will be subjected to vibration.

Electrical (wiring)

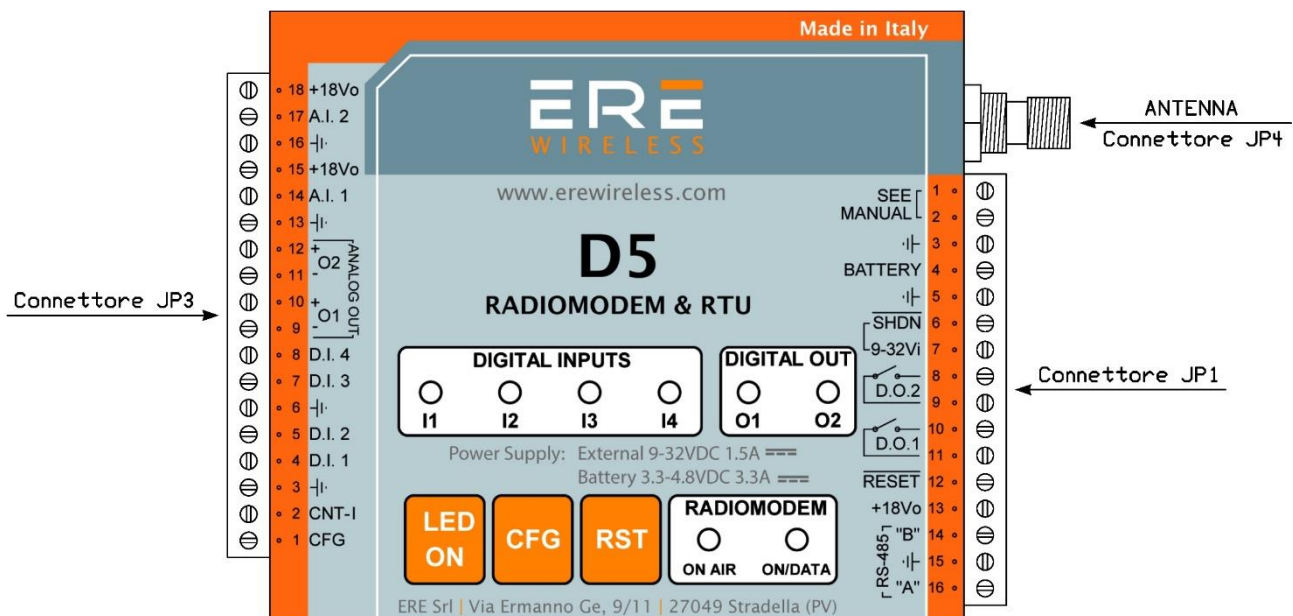
To prevent damage both the radio modem and any terminal devices must always be switched OFF before connecting or disconnecting the serial connection cable. It should be ascertained that different devices used have the same ground potential. Before connecting any power cables the output voltage of the power supply should be checked.

The product has no disconnecting device. An external disconnecting device must be installed. This must be close to the equipment.


To be supplied by class II (LPS) certified AC/DC adaptor.

In case of external power supply 9-32VDC operated not connect any battery.

In case of battery operated must not be inverted power polarity (not protect input)


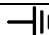

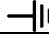


JP1 Connector		
PIN	Label	Description
1	See Manual	To connect to PIN 2 only in case of 9-32 VDC power supply (PIN 7-5)
2	See Manual	To connect to PIN 1 only in case of 9-32 VDC power supply (PIN 7-5)
3	— —	Ground (GND)
4	Battery	Battery power supply (3.3 - 4.8 VDC) ⁽¹⁾
5	— —	Ground (GND)

6	SHDN	Shutdown input (active low)
7	9-32 Vi	External power supply (9 - 32 VDC) ⁽¹⁾
8	D.O. 2	Digital Output n° 2 normally open (NO)
9	D.O. 2	Digital Output n° 2 normally open (NO)
10	D.O. 1	Digital Output n° 1 normally open (NO)
11	D.O. 1	Digital Output n° 1 normally open (NO)
12	Reset	Reset
13	+18Vo	18 VDC output ⁽²⁾
14	"B"	RS-485 (line A)
15		Ground (GND)
16	"A"	RS-485 (line B)

NOTE:

- ⁽¹⁾ In case of external power supply 9-32VDC not connect any battery to PIN 4 - 3
In case of battery operated must not be inverted power polarity (not protect input)
- ⁽²⁾ Enabled by configuration software

JP3 Connector		
PIN	Label	Description
1	CONFIG	Configuration input (active low) ⁽¹⁾
2	Counter Inp.	Counter input (max frequency 10 Hz)
3		Ground (GND)
4	DIG. INP. 1	Digital Input n° 1 (active low)
5	DIG. INP. 2	Digital Input n° 2 (active low)
6		Ground (GND)
7	DIG. INP. 3	Digital Input n° 3 (active low)
8	DIG. INP. 4	Digital Input n° 4 (active low)
9	AN-OUT 1 -	Analog Output n° 1 (negative) ⁽²⁾
10	AN-OUT 1 +	Analog Output n° 1 (positive) ⁽²⁾
11	AN-OUT 2 -	Analog Output n° 2 (negative) ⁽²⁾
12	AN-OUT 2 +	Analog Output n° 2 (positive) ⁽²⁾
13		Ground (GND)
14	AN-INP. 1	Analog Input n° 1
15	+18Vdc Out	18 VDC output ⁽³⁾
16		Ground (GND)
17	AN-INP. 2	Analog Input n° 2
18	+18Vdc Out	18 VDC output ⁽³⁾

NOTE:

- ⁽¹⁾ When the configuration input is connect to ground the device is ready for setting by configuration software through serial port
- ⁽²⁾ Ground insulated
- ⁽³⁾ Enabled by configuration software

Antenna

The device's antenna must be free and at least 10 cm away from any conducting material. When the antenna is installed outside, it is essential to connect the cable screen to the building's earth. We recommend using lightning protection. The protection kit chosen must permit the coaxial cable to be earthed (eg: coaxial lightning arrester with earthing of the cable at different places on the antenna at the base of pylons and at the entry, or just before entering the premises).

Configuration

Download from Ere web site (www.erewireless.com) the latest version of configuration software (confSW_D510 for D510 series operating at 169 MHz and confSW_D540 for D540 series operating at 868 MHz).

The configuration must be done through a RS485 interface like ERE C200-800E or equivalent.

System requirements

Operative system supported: Windows 98 SE, Windows ME, Windows2000, Windows XP, Windows Vista, Windows 7, Windows 8

Minimum screen resolution: 800 x 600 dpi.

Configuration by USB port with C200-800E (DC485USB) converter

- 1) **Install the appropriate driver** as explained in the user manual of the **C200-800E (DC485USB)** interface.
- 2) Connect the interface C200-800E (DC485USB) to a personal computer by a USB cable with type A connector (PC side) and microUSB connector (interface side).
- 3) Go into the options menu of the configurator (Options) and **select the serial port** (Serial port selector).
- 4) Connect with a cable the signals: Ground, A, and B, of the C200-800E (DC485USB) interface to the respective signals of the radio modem.
- 5) Power up the radio modem and enter configuration mode by holding down the CFG button for more than two seconds (the LED becomes orange in colour).
- 6) Read or Write the configuration by pressing the relative button on the configurator.
- 7) At the end of the configuration switch off the radio modem or press the CFG button for more than two seconds to return to normal operating mode.

If you want to use another model of USB-RS485 converter, the configuration procedure remains unchanged. In this case you need to install the driver of the converter that you want to use in place of the DC485USB converter driver. It is also possible to use a RS232-RS485 converter, in this case installing drivers, if there is a physical RS232 port on your PC, is not required.

Note:

When the program starts, the buttons "Next Page", "Load Default" and "Write", remain inhibited until you choose the operating mode between: "Mirror", "Low energy", "Modbus standard" or "Radiomodem". This choice is done by pressing the left mouse button on the relevant button in the configurator. Even the reading of the parameters of a unit involves the activation of the buttons inhibited at program startup.

The selection among the various fields of the configuration program is carried out with the TAB key or by positioning the mouse pointer over the field and clicking once with the left button. A function is activated when, in the relative box, the check mark is present.

Function of the Buttons common to all modes

Read:

Reads the data from the radiomodem.

Write:

Writes the configuration data into the radiomodem.

Load Default:

Resets all fields to their default values.

Next Page:

Allows you to move to the second page. You can go to the second page only if you have selected an operative mode between the four possible ones.

Exit:

Close the configurator program.

Note:

The buttons **Write**, **Load Default** and **Next Page** are activated only if you have selected an operation mode between the four possible ones, or if you load a configuration file (using the menu File, Open), or if the configuration is read by a radio modem unit.

Toolbar:

The Toolbar on the upper side of the screen contains **File**, **Options** and **Help** Menus. Each menu can be opened as a normal Windows menu using both mouse and keys.

The different menus have the following functions:

FILE menu:

- **Open** (path/filename): Loads an existing file in the configurator program.
- **Save** (path/filename): Updates an existing file after a change in the parameters.
- **Save As** (path/filename): Creates a new file containing all configuration data. The user can select an adequate filename and choose the destination folder. The default destination folder has the same path as the executable program.
- **Exit**: close the configurator program.

Options menu:

- **Serial port selector**: Open the serial port selection box. A port number between 1 and 16 can be chosen.

- Canalization

12,5 KHz: the width of the radio channel is **12.5 KHz** and the speed of radio data is **4800 bps**.

25 KHz: the width of the radio channel is **25 KHz** and the speed of radio data is **9600 bps**.

50 KHz: the width of the radio channel is **50 KHz** and the speed of radio data is **19200 bps**.

Help menu:

- **Index F1**: Open the Help file.
- **About**: Display the version information about the configuration software.

MIRROR MODE

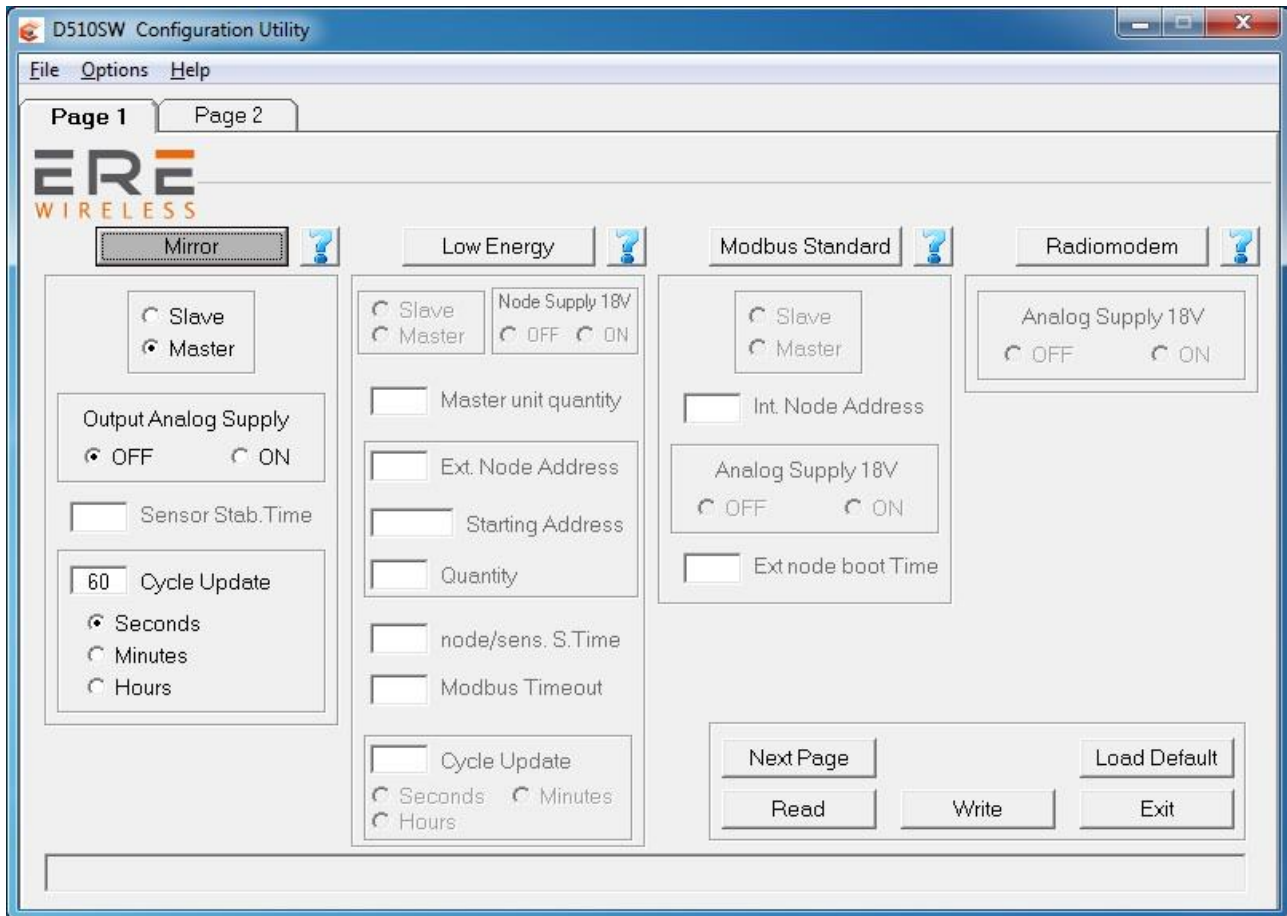
In **Mirror mode**, the status of the first two digital inputs and the values of the two analog inputs (4 ... 20mA) of a unit are replicated respectively on two digital outputs and two analog outputs of a remote unit and vice versa. In this operating mode, data communication on the serial line is not allowed. The mirror mode can only work between two radiomodem units (**point to point**) and can use digipeater (up to 8) to extend the route of the radio link. The initiative of the transmission is always taken from the master device and it is triggered by two different events:

- 1) The change of the state of the digital inputs (every input of the four available modes may trigger this event).
- 2) The expiration of the timer dedicated to the periodic sending of the data (cycle update).

On the Slave unit, every time a packet is received, the diagnostic parameters are sent over the serial line. The sent parameters are:

- 1) Status of four digital inputs and two digital outputs of the Master unit.
- 2) Value (in milliampere) of two analog inputs and two analog outputs of the master unit.
- 3) Value of the battery voltage of the Master unit.
- 4) RSSI value related to the last packet received by the Master unit.

In the Slave unit it is also possible to read the diagnostic parameters at any time by sending the command "at?" or "AT?" to the serial port. The radio modem will respond with the parameters described above adding to these the value of the elapsed time since the reception of the last packet transmitted by the Master.



Slave / Master:

Allows you to select the functionality of the radiomodem between Master and Slave. The unit configured as Master uses the energy saving and transmits as a result of events. The unit configured as a Slave is always active and never takes the initiative of the transmission.

Cycle Update:

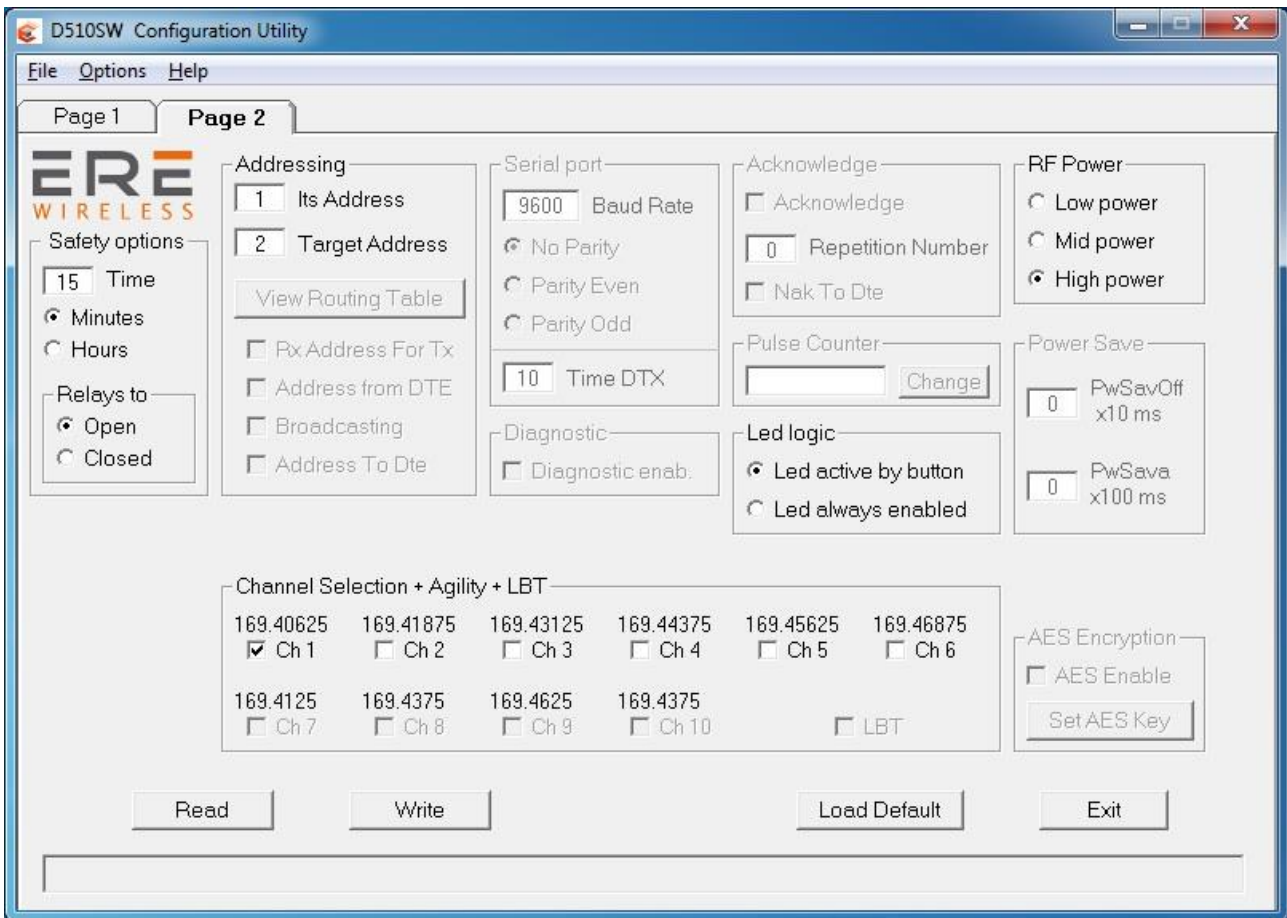
In this field the time of the periodical transmission is set. The time base is selectable between seconds, minutes or hours. The time range can vary from one second (minimum) to 255 hours (maximum). In this field you cannot insert a value less than the value of the time interval assigned to the field "Sensor stabilization time".

Output analog supply:

Allows you to enable or disable the 18Volts power source output on the radio modem connector. This power source can be used to power the sensors connected to the analog inputs when an appropriate external power source is not available. **Note:** this power source is only enabled during the ON cycle of the device, therefore it is not always available. The ON time period of this power source is determined by the "Sensor stabilization time" field and by the "cycle update" field.

Sensor stabilization time:

In this field the time interval (in steps of 100 ms) between the reactivation of the radiomodem (the exit from the sleep mode as a result of triggering events) and the reading of the analog inputs is inserted. It is the time necessary to the external sensors to become stable after it is switched ON. During this time interval, if the "Output Analog Supply" option is enabled, the 18 volt internal power source is available on the radio modem connector.



Safety options (frame):

Time: sets the value of the safety timer whose time base is selectable between minutes and hours. If the radio doesn't receive a valid packet within the selected time interval, the two digital outputs (relays) are forced to a condition chosen in the field "Relays to Open/Closed". This condition refers to the relay contacts of both two digital outputs. To disable the functionality of the safety timer set the value of "Time" to zero.

Minute: the value of "Time" is expressed in minutes.

Hours: the value of "Time" is expressed in hours.

Relays to **Open:** when the safety timer expires, the relays contacts of the two digital outputs will be forced to open.

Relays to **Closed:** when the safety timer expires, the relays contacts of the two digital outputs will be forced to closed.

At the first reception by the radio of a valid packet, the condition of the two relays contacts assumes the same status as the two digital inputs of the remote unit.

Its address:

It is the value of the address of this radiomodem. It is advisable to configure each radiomodem with a unique address.

Target address:

Contains the value of the destination address and must be equal to the address of the other unit. Example: Master unit: Its address = 1; Target address = 2. Slave Unit: Its address = 2; Target address = 1. It is evident that the addresses of the two fields (its own address and the and target address) are reversed between Master and Slave. In the case of using digipeaters, they must have a different address.

System Code & Digipeater address (double click of the mouse on "Target" or [Enter] key):

When the focus is on the Target field, pressing the "Enter" key on the keyboard or by double clicking the mouse, a window opens in which you can enter the system code and the addresses of the

digipeater path to include in the radio link. **On the involved units the system code must be the same.**

Led logic:

Affects the functionality of the leds which indicate the states of the digital ports (four inputs and two outputs).

Led active by button: the digital in/out status is displayed only during the pressing of the "Led On" button on the radio modem (lower consumption).

Led always enabled: at every ON cycle the leds display the status of the digital inputs/outputs (implies a higher consumption).

RF Power:

Allows the choice between three different levels of power: High, Medium, Low. If the RSSI value displayed in diagnostic parameters of the Slave unit is good (-70 dBm or better), and if the low power of the Master unit is an important factor, it is advisable to choose a medium or low power level.

Channel selection + Agility + LBT:

In this box you choose the radio channel to be used. If you want to use the agility feature (transmission on the less noisy channel among the active channels), you can select more than one radio channel. The maximum number of active channels is dependent on the canalization setting. **It is mandatory that in the same network all the radiomodems use the same radio channels.** In Mirror mode the LBT function cannot be activated.

MODBUS LOW ENERGY

In this modality the network is composed of one Slave unit and one or more (up to 16) Master unit. The Slave unit is connected to a PC (or PLC) on which there is a running SCADA software. The slave device is always in reception, never takes the initiative of the transmission and transmits only in response to a packet received from a Master unit. The Master units send a packet to the Slave unit using the modbus RTU Protocol. The function "Write multiple registers (function code 0x10) is used. The transmission of the Master units is triggered by two events:

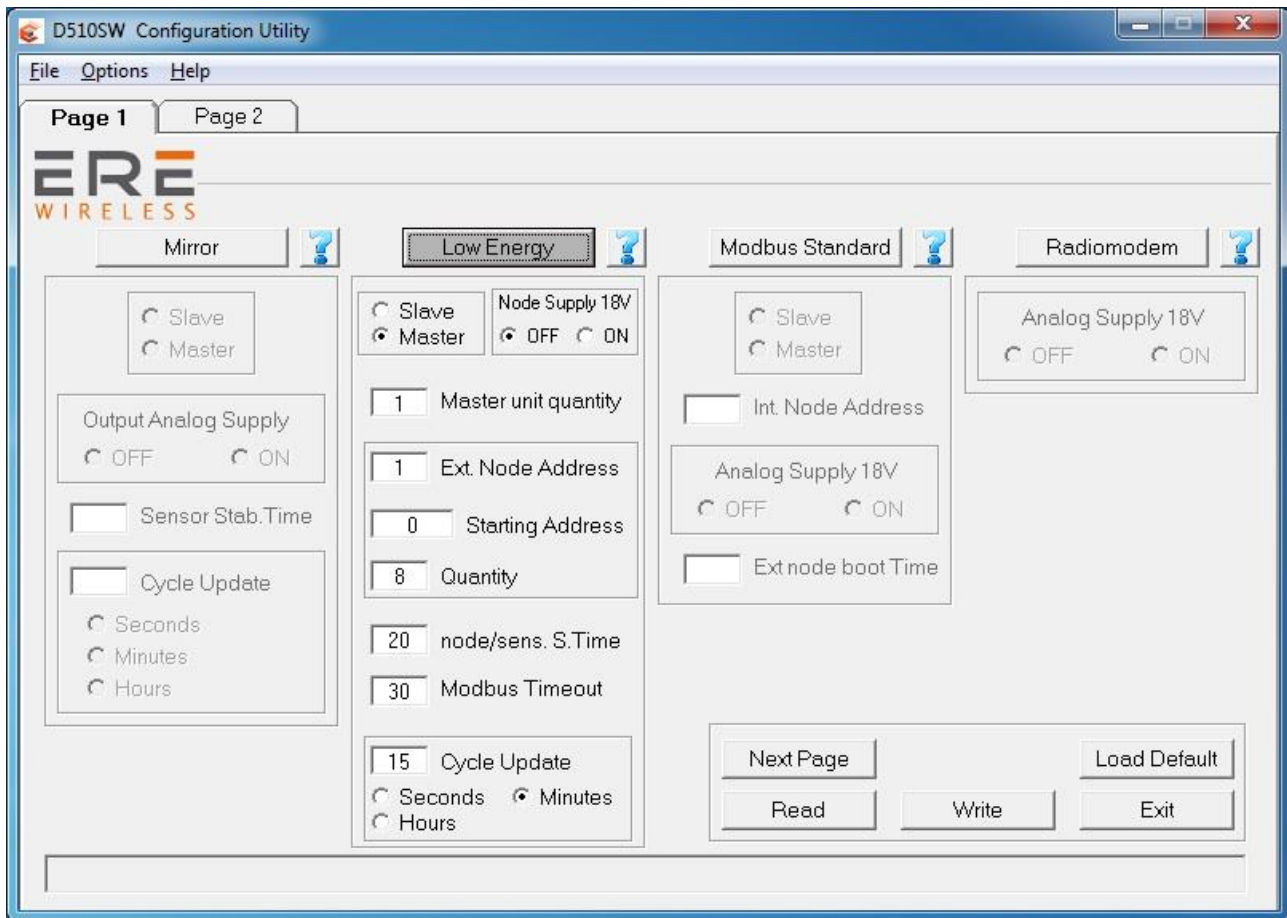
- 1) The expiration of the timer dedicated to the periodical sending;
- 2) A change in any of the four digital inputs on the Master radiomodem.

On each Master device, it is possible to connect, by the RS485 interface, an external Modbus node (Modbus device that can read digital or analog inputs) in order to extend the number of monitored signals.

Note: You cannot use the digital inputs of an external modbus node to trigger the transmission on the radiomodem.

In the Master unit, when a transmission is triggered, the value of the digital and analog inputs is first acquired, the external node (if present) is read, then the radio modem sends the packet consisting of the collected data.

The slave device receives the packet, controls it, and if there are no errors, it sends the data (payload) to the SCADA application via the RS485 interface. At this point the SCADA software, connected to the Slave radiomodem, sends the response packet, which is transmitted back to the Master unit. At the end of the communication, the Master unit returns in sleep mode, waiting for a new transmission event.

**Slave / Master:**

Allows you to select the functionality of the radiomodem between Master and Slave. The unit configured as a Master uses the energy saving and transmits due to events. The unit configured as a slave is always active and never takes the initiative of the transmission.

Node supply 18V:

Allows you to enable or disable the output 18 volts on the connector of the radiomodem. If there is an external modbus node or if the analog inputs are used it is necessary to activate this field.

Note: the 18 Volt output is enabled only during the acquisition periods of the parameters to be transmitted, consequently the time this tension (+18Volt) is activated depends on the value entered in the field "Ext Note Boot Time", which defines the startup time of the external Modbus node or of the sensors connected to the radiomodem analog inputs.

Master unit quantity:

Defines the number of the Master radiomodems present in the network. The allowed values range from 1 to 16.

Ext node address:

In this field the address of the external modbus node is set, which it must be identical to the address assigned to the modbus node device.

Starting address:

In this field the address of the first register to be read from the external node is set.

Quantity:

In this field the quantity of registers to be read from the external node (max 96 registers) is set.

Ext node boot time:

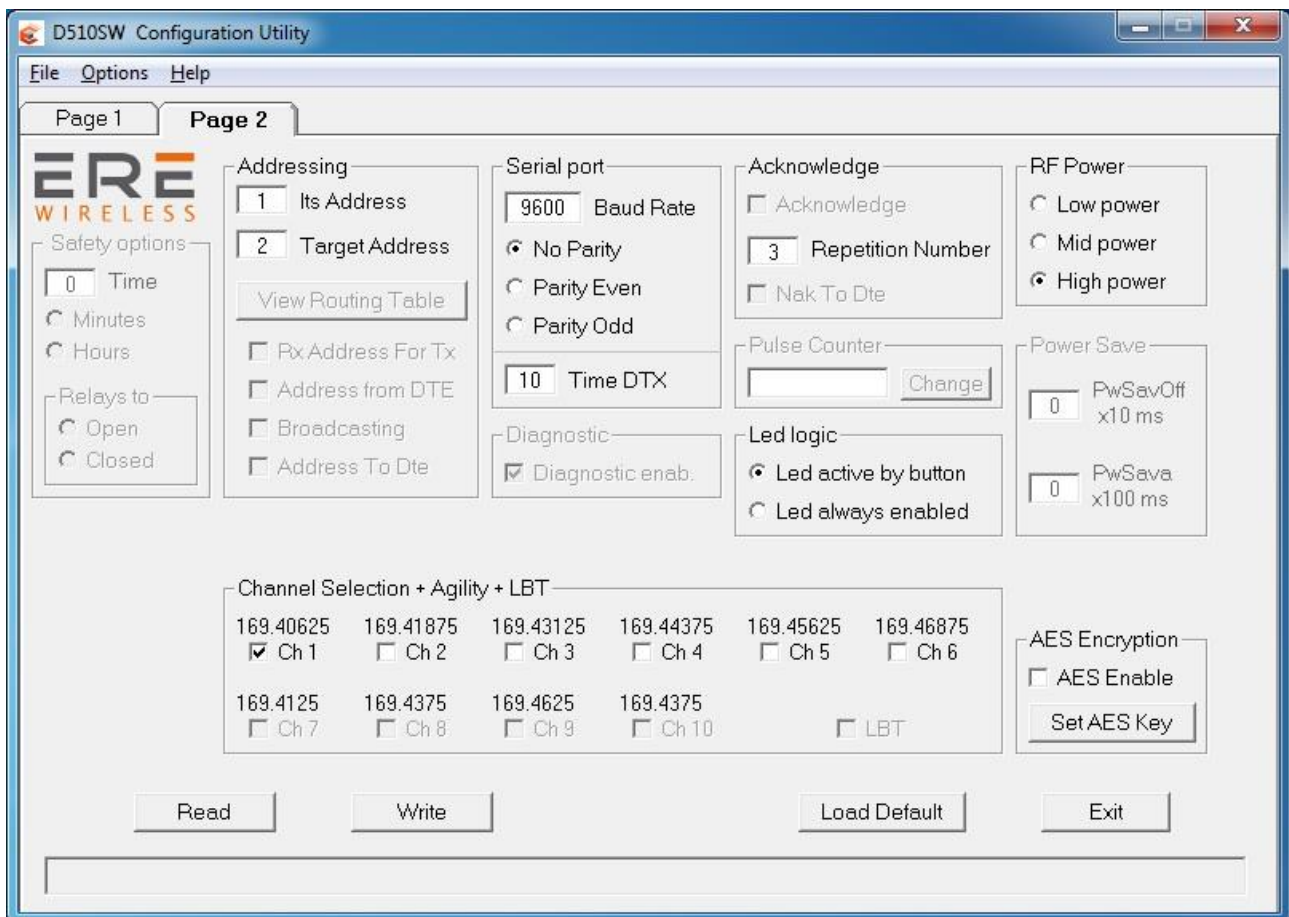
This is the interval of time required to the external modbus node to become ready after the switch on. The radiomodem provides power to the external Modbus node (18 Volt) only after a transmission trigger event. See the related datasheet for sizing this variable.

Modbus timeout:

Represents the time interval (in hundreds of milliseconds) within which the modbus answer on the packet sent by the Master unit must be received.

Cycle Update:

In this field the time of the periodical transmission is set. The time base is selectable between seconds, minutes or hours. The time range can vary from one second (minimum) to 255 hours (maximum). In this field you cannot insert a value less than the time interval assigned to the field "External node boot time".



Its address:

Contains the value of the address of this radiomodem. Each unit must have a unique address. In the Master device the maximum value of this field is dependent on the number of units in the network (parameter selected in the field "Unit quantity").

Target address:

This field sets the value of the destination address. In the Master units, this field must contain the same address used in the field "Its address" of the Slave unit. In the Slave units this field is not taken into account because the mode "RX Address for TX" is used in the response packet.

System Code & Digipeater address (double click of the mouse on "Target" or [Enter] key):

When the focus is on the Target field, pressing the "Enter" key on the keyboard or by double clicking the mouse, a window opens in which you can enter the system code and the addresses of the

digipeater path to include in the radio link. **The system code must be the same for all the radiomodem in the network.**

Note: In "modbus low energy" mode it is recommended to use the minimum number of digipeater units

Serial port:

In this frame (collection of options) the parameters choice of the RS485 serial line is performed. In the Master units, these parameters configuration is referred to the data exchange between the radiomodem and the external Modbus node. In the Slave unit, these parameters configuration is referred to the data exchange between the radiomodem and the SCADA application. The format of the frame on the RS485 serial port uses one stop bit.

Baud rate:

This field is used to set the communication speed of the serial line RS485. The legal values are: 1200, 2400, 4800, 9600, 19200, 38400, 57600 bps.

Parity:

By this selector it is possible to enable and choose the parity type on the serial line. It is possible to choose between: None (parity disabled), parity Even, parity Odd.

Time DTX:

Defines the time between the stop of the data received from the serial port and the sending of the packet via radio. In the "modus low energy" mode this parameter only affects the unit configured as a Slave. If you realize that the data transmitted from the slave unit are incomplete, try to increase this time.

Repetition number:

It is active only in the devices configured as Master. In this field you can set the number of repetitions of a packet when there is no answer.

Led logic:

Affects the functionality of the leds which indicate the states of the four digital inputs. In this modality it is not possible to use the two digital output (relé).

Led active by button: the digital in status is displayed only during the pressing of the "Led On" button on the radio modem (lower consumption).

Led always enabled: at every ON cycle the leds display the status of the four digital inputs (it implies a higher consumption).

RF Power:

Allows the choice between three different power levels: High, Medium, Low. If the value of the RSSI, present in the diagnostic parameters sent to the SCADA software, is good (-70 dBm or better), and if the low power of the Master unit is an important factor, it is advisable to choose a medium or low power level.

Channel selection + Agility + LBT:

In this box you choose the radio channel to be used. If you want to use the agility feature (transmission on the less noisy channel among the active channels), you can select more than one radio channel. The maximum number of active channels is dependent on the canalization setting. **It is mandatory that in the same network all the radiomodems use the same radio channels.** In "Modbus Low Energy" mode the LBT function cannot be activated.

AES Enable:

Enable or disable the AES-128 data encryption. In the transmitted packet, the encoding and decoding is done on the payload only.

Set AES Key:

By pressing this button a window opens where the value of the 128-bit AES key is set. The user must insert 16 ascii character. The configurator displays an error message if, upon pressing the "OK" button, the string of the AES key is incomplete (i.e. less than 16 characters are inserted).

Note: If the AES is used, all the radiomodems in the same network (except digipeater) must use the same AES key. If the key setting is not the same, the data transiting on the serial line are not interpretable by the connected SCADA software.

MODUBUS

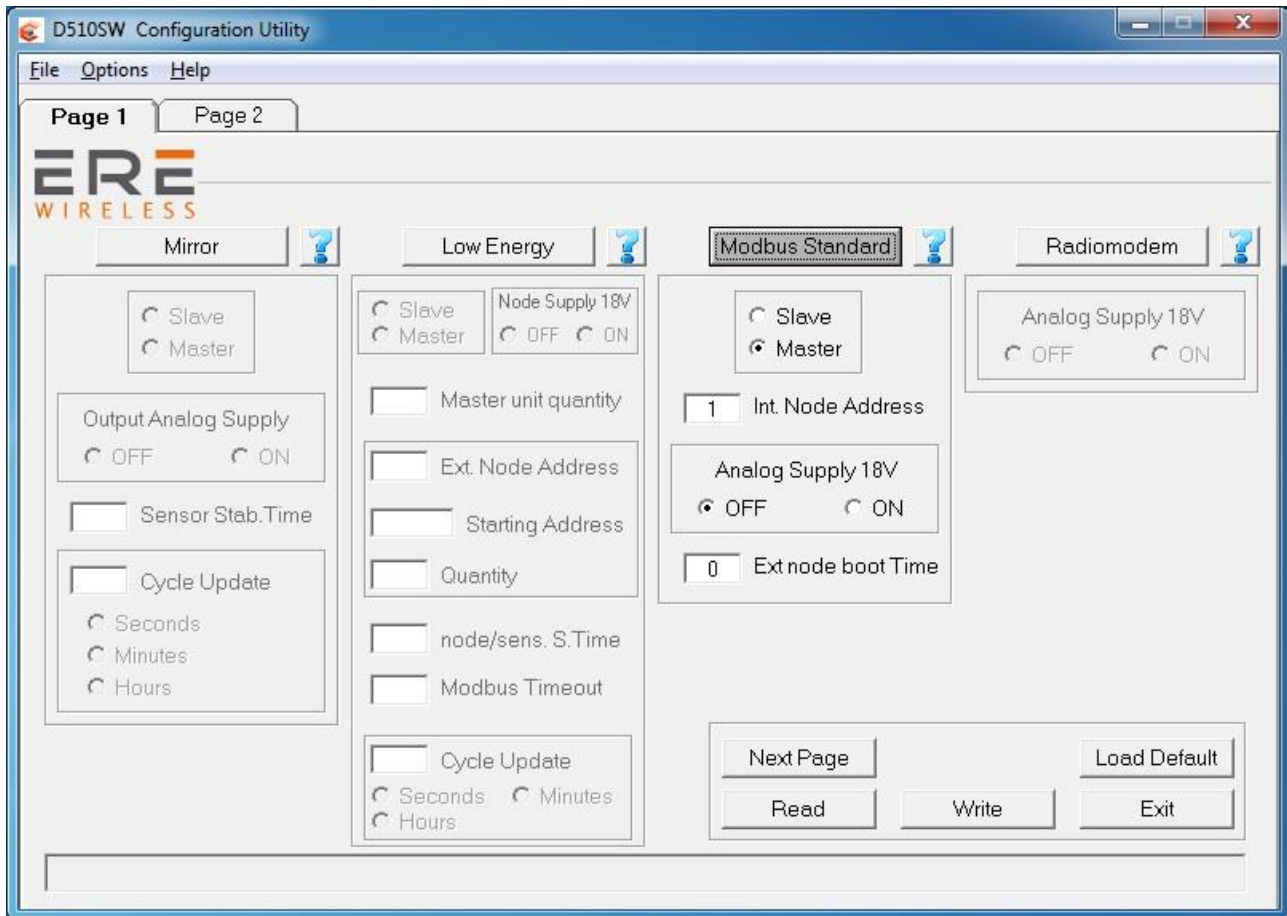
This mode of operation provides one Master unit (star centre) and one or more slave units. The Master unit must be connected via the RS485 interface to a PC (or PLC) on which a SCADA application is running, which uses the communication protocol Modbus RTU. The SCADA application is the heart of the system and has the task to read and/or write the parameters of the different nodes of the network using the Modbus protocol. The Master radiomodem, connected to the SCADA, uses the radio link to transmit the packets received from the serial line. The required addressing is realised by the use of an internal routing table. To do this the Master radiomodem evaluates the first byte of the received modbus packet, which, in the Modbus protocol, corresponds to the address of the node which you want to communicate with. Each node address (1 to 254) may be associated with an independent radio path.

All radio modems in the network (both Masters and Slaves) must be configured with an unique address (the "Its address" field). The routing table is used to indicate the path of the packet radio, in this way, the packet arrives to the target radiomodem directly or via all the interested digipeaters. In the routing table, the node address number 255 is reserved for the broadcasting modbus packet. In this case, the Master radiomodem, when it receives a packet with address zero (packet broadcasting type) from the SCADA application, uses the node number 255 of the routing table to route properly the radio packet. The broadcasting mode cannot be implemented if there is a radio modem unit that cannot communicate with all the other units of the network, because in this case one or more units would not receive the broadcasting packet. This is the case of a network geographically widespread in mountainous areas or where there are many obstacles.

The node addresses must be unique, in the same network can exist up to 254 nodes distributed according to need among the slave units in the network. Avoid to assign the node address 255, which, as explained, is used for the broadcasting packet. If, in a radiomodem unit, the internal peripherals are used, this radiomodem is seen as a modbus node in the network. It has its own modbus address, through which it is possible to read and / or write the internal peripherals of the radiomodem (digital inputs / outputs, pulse counter and analog inputs / outputs). On each radiomodem up to 32 external Modbus nodes can be connected via the RS485 serial interface. Each of these external nodes has its own modbus address, to be able to interrogate each node is necessary that all the nodes belonging to the same slave units use the same routing, that is, the same sequence of radiomodem addresses, which, in this case will be common to more node addresses (simply copy the addresses of the radio path in every node address connected to the same radiomodem) given that the modbus packet must pass through the same radiomodem.

At every slave radiomodem a number of external Modbus devices (I / O analog, digital or mixed) unit can be connected, via the RS485 interface, the maximum number of which depends on the type of power supply. The radiomodem provides an output 18 volts with a maximum power of 4 watts, therefore the number of modbus nodes connected to the external power supply (18 Volt) is limited by the available power. It is preferable to use this power source for the sensors connected to analog inputs and to power the analog output of the radiomodem. If an external power source is used, the limit of the connectable external nodes is of 32 units. The maximum number of slave radiomodes that may be present in a network is dependent on the number of modbus nodes connected to each slave unit and also by the number of Slaves that use its internal peripherals: in this case each Slave radiomodem has one modbus node address that is subtracted to the total of 254 modbus addresses available. Since the limit is of 254 addresses, the sum between the radiomodem units (of which are used the internal peripherals) and the external nodes connected cannot exceed this value. For example, if a network contains 25 slave radiomodems used as modbus nodes (ie, if its internal peripherals are used), the maximum number of available addresses of the external nodes are: 254-

25 = 229; distributed on each slave radiomodem according to the requirements and respecting the maximum limit of 32 nodes for each slave unit.



Slave / Master:

Allows you to select the functionality of the radiomodem between Master and Slave. The units configured as a slave never takes the initiative of the transmission.

Internal node address:

It is the address of the modbus node related to the internal peripherals of the radiomodem. Set a non-zero value if you want to use its internal peripherals.

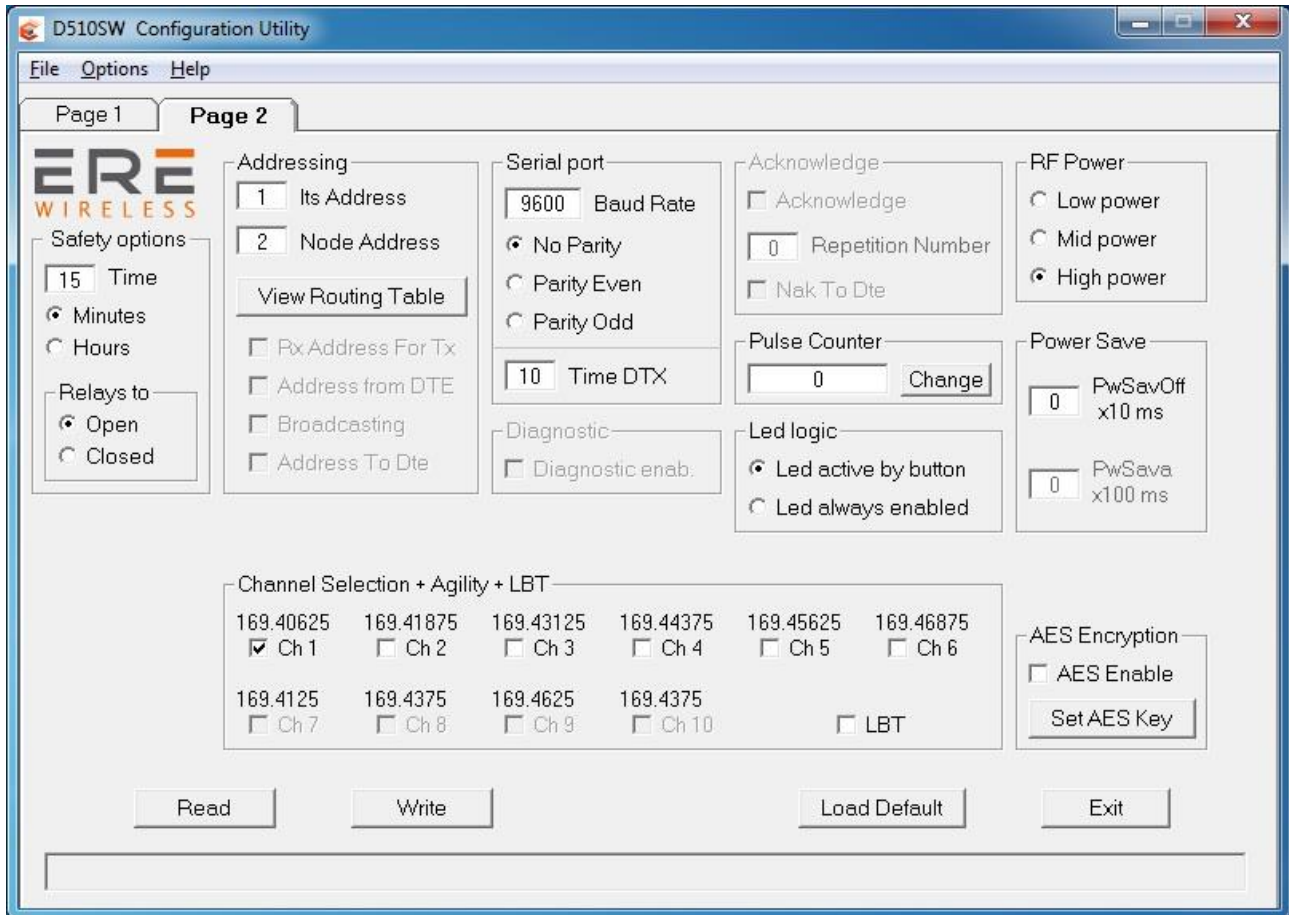
Analog supply 18V:

This choice allows the activation of the +18V output, made available on the radio modem connector. The activation logic is also dependent on the use of the power save. If the power save is disabled (field PwSavOff = 0) then the +18 volt output follows precisely the field "Analog Supply 18V": the +18V is always present; vice versa, if the option selected is "ON", it is always absent. If the power save is used, the "OFF" choice in the "Analog Supply 18V" keeps the +18V output always disabled, vice versa, if the option selected is "ON", the +18V output is present in a non-continuous manner: it depends on the value of the modbus address and on the type of modbus function received from the Slave device. Modbus functions "Read Input Register" (0x03) and "Write Single Register" (0x10) in a packet addressed to the internal node (internal peripheral) of the radio modem enable the +18V output for the time dictated by the "Ext node boot time" field. The other modbus functions received will not activate the +18V output. On the contrary, if a modbus packet addressed is received to an external node, any kind of modbus function enables the output +18 volts for a duration dependent on the "Ext node boot time" field.

External node boot time:

When, in the previous field "Analog supply 18V", the "ON" value is selected and if the power save (PwSavOff > 0) is used, this field specifies the amount of time required for the external modbus

nodes and/or for the external analog sensors (connected to the analog inputs of the radiomodem) to be operational. The +18V output is only activated upon receiving an adequate modbus packet (**see the above explanation**) and, at the end of this time, the peripherals are read. After reading, the +18V output is disabled again. This field has a value in steps of 100 milliseconds. Set this parameter considering the node that takes longer to start-up.



Safety options (frame)

Time: sets the value of the safety timer whose time base is selectable between minutes and hours. If the radio doesn't receive a valid packet within the selected time interval, the two digital outputs (relays) are forced to a condition chosen in the field "Relays to Open/Closed". This condition refers to the relay contacts of both two digital outputs. To disable the functionality of the safety timer set the value of "Time" to zero.

Minute: the value of "Time" is expressed in minutes.

Hours: the value of "Time" is expressed in hours.

Relays to **Open**: when the safety timer expires, the relays contacts of the two digital outputs will be forced to open.

Relays to **Closed**: when the safety timer expires, the relays contacts of the two digital outputs will be forced to closed.

At the first radio reception of a modbus packet related to the digital outputs, the condition of the two relays contacts will assume again the status imposed by the modbus command received.

Its address:

It is the value of the address of the radiomodem. Each unit must have a unique address. This constraint applies both to the Slaves and to the Master radiomodems.

Node address (Master unit):

It is the value of the target modbus node. Each node address is associated with the sequence of addresses of the radiomodems through the routing table.

Routing table (double click of the mouse on "Target" or [Enter] key):

When the focus is on the "Node address" field, pressing the "Enter" key on the keyboard or by double clicking the mouse, a window opens in which you can enter the sequence of radiomodem addresses to associate to a particular node address.

System Code: it is the system code of the radiomodem. The purpose of this parameter is enabling the communication only between those units that have the same system code value. **This value must be the same for all the radiomodem in the network.**

Digipeaters: they are the addresses of the radiomodem, which have the task to retransmit the packet to a subsequent radiomodem (another digipeater or the target unit). The purpose of these units is to extend the coverage area of the radio network.

Target:: it is the addressee station in the radio network.

View Routing Table:

Pressing this button with the mouse, a window opens where you can view all the values of the addresses of the nodes and, for each one, its routing associations. Use the "Page Up", "Page Down" or the arrow keys to move along the text. Press the key "Esc" or "Enter" or the spacebar on the keyboard to close this window.

Serial port:

In this frame (collection of options) the choice of the RS485 serial line parameters is performed. In the Master unit these settings refer to the communication with the SCADA application, while in the Slave units these settings refer to the communication with the external modbus node.

Baud rate:

This field is used to set the communication speed of the serial line RS485. The legal values are: 1200, 2400, 4800, 9600, 19200, 38400, 57600 bps.

Parity:

By this selector it is possible to enable and choose the parity type on the serial line.

Time DTX:

Defines the time between the stop of the data received from the RS485 serial line and the transmission of the radio packet. If the received packets are incomplete you must increase this time to mask any pauses between the bytes of the packet sent from the SCADA application to the Master radiomodem. The steps are in milliseconds.

Pulse Counter:

The radiomodem has an input pin dedicated to the count of the pulses (logic level transitions to a maximum frequency of 5 Hz). When the parameters of a Slave radiomodem are read, the value of the counted pulses up to that moment appears in this field. It is possible to reset the counter or write a new value by pressing the "Change" button. A window will open where you can enter zero or a new value. The procedure is terminated by confirming the operation by the pressing of the "Write new value" button. Note: The write procedure of the pulse counter value must be done with the radiomodem in configuration mode (orange LED light).

Led logic:

This parameter affects the functionality of the LEDs which indicate the condition of the digital ports. This switch allows you to choose between two option: the leds are always active (which needs more power); the leds are active only when the "LED" button is pressed (which needs less power).

RF Power:

Allows the choice between three different levels of transmission power: High, Medium, Low.

Power Save**PwSavOff:**

When a number greater than zero is inserted, the Power Save feature is enabled. This field allows you to set the value of the "OFF" time interval for the energy savings. The step is in tens of milliseconds.

PwSava:

When the power save is used, through this field you can set the time when the radiomodem remains operational after an event (the reception of a radio packet) has temporarily awakened the unit. The step is in hundreds of milliseconds.

Channel selection + Agility + LBT:

In this box you choose the radio channel to be used. If you want to use the agility feature (transmission on the less noisy channel among the active channels), you can select more than one radio channel. The maximum number of active channels is dependent on the canalization setting. **It is mandatory that in the same network all the radiomodems use the same radio channels.**

In the "modbus standard" mode you can enable the **LBT** feature: the radiomodem waits that the active channel is free before transmitting the radio packet. It is advisable to use this feature together with the agility in order to minimize the waiting time of transmissions.

AES Enable:

Enable or disable the AES-128 data encryption. In the transmitted packet, the encoding and decoding is done on the payload only.

Set AES Key:

By pressing this button a window opens where the value of the 128-bit AES key is set. The user must insert 16 ascii characters. The configurator displays an error message if, upon pressing the "OK" button, the string of the AES key is incomplete (i.e. less than 16 characters are inserted).

Note: If the AES is used, all the radiomodems in the same network must use the same AES key. If the key setting is not the same, the data transiting on the serial line are not interpretable by the connected hardware.

Modbus register***Read of digital input***

Use Modbus command "Read discrete inputs" (0x02). The address are:

Digital input 1 = Address 0
 Digital input 2 = Address 1
 Digital input 3 = Address 2
 Digital input 4 = Address 3

Read of digital output

Use Modbus command "Read coils" (0x01). The address are:

Digital output 1 = Address 0
 Digital output 2 = Address 1

Read of radiomodem registers

Thanks to Modbus command "Read Input Registers" (0x04) it's possible to read different Radiomodem parameters as following:

Address 0: Digital input status (bit 0 = digital input 1, bit 1 = digital input 2, bit 2 = digital input 3, bit 3 = digital input 4)

Address 1: Analog input value CH1 (μ A)

Address 2: Analog input value CH2 (μ A)

Address 3: Battery voltage (mV)

Address 4: RSSI value of local unit (dbm, signed int16 format)

Address 5: RSSI value of remote unit (dbm, signed int16 format).

Address 6: Counter most significant bit

Address 7: Counter least significant bit

Note: The counter register is in uint32 format and the counter value is combined by address 6 and 7 value: multiply the most significant bit per 65536 and sum it to least significant bit. The max value allowed is $(2e32) - 1$.

In order to read the register select the address node, set the starting address and the number of register to read (max 8).

Write digital output

Use Modbus command "Write single coil" (0x05) or "Write multiple coils" (0x15). The address are:
 Digital output 1 = Address 0
 Digital output 2 = Address 1

Write analog output

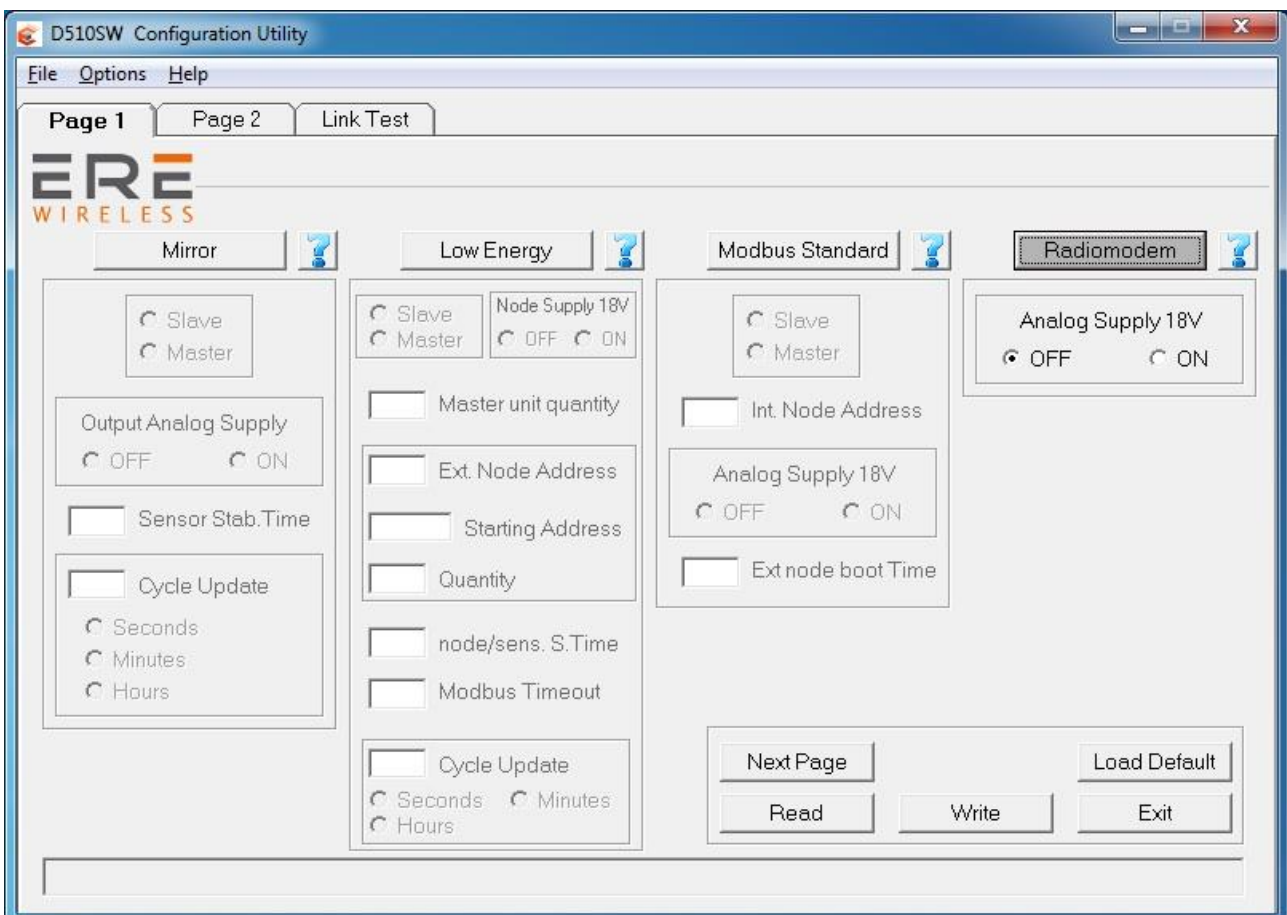
Use Modbus command "Write single register" (0x06). The address are:
 Analog output 1 = Address 0
 Analog output 2 = Address 1

RADIOMODEM

This mode of operation is normally used for the exchange of data between different locations. In the same network the presence of a master unit as well as of one or more slave units is expected. If the power save feature is not used, each unit can receive data via the serial port RS485 (except during radio communications) up to a maximum of 1024 bytes.

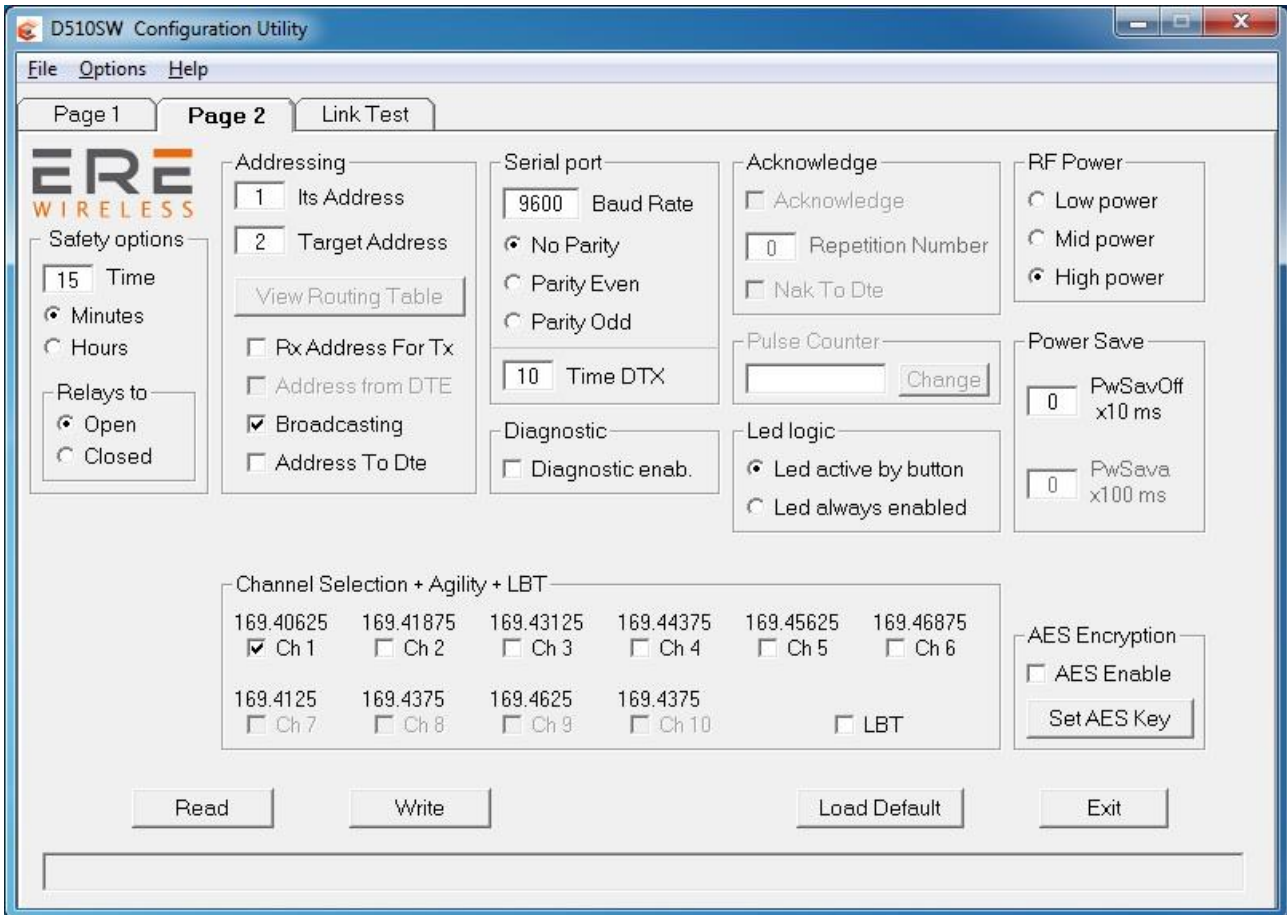
When the reception of the data is completed (i.e. when 1024 bytes are received or when the "Time DTX" timer is expired), the radio modem send the packet to the target unit. It is possible to include in the radio path up to 8 digipeater to increase the coverage distance. If the Power Save feature is used, the logic behaviour is as follows: the Master unit can always receive characters from the RS485 serial line (except during radio communications). The slave units can receive characters from the serial line only during the time interval referred to as "PwSava" i.e. the period in which a slave unit remains active after the reception of a radio packet.

In the configurator, when the radiomodem mode is selected, an additional page called "Link Test" is available. Refer to the relevant page of this manual for details.



Analog supply 18V:

Allows the enabling or disabling of the output 18 volt, both for Master and Slave.



Safety options (frame)

Time: sets the value of the safety timer whose time base is selectable between minutes and hours. If the radio doesn't receive a valid packet within the selected time interval, the two digital outputs (relays) are forced to a condition chosen in the field "Relays to Open/Closed". This condition refers to the relay contacts of both two digital outputs. To disable the functionality of the safety timer set the value of "Time" to zero.

Minute: the value of "Time" is expressed in minutes.

Hours: the value of "Time" is expressed in hours.

Relays to **Open**: when the safety timer expires, the relays contacts of the two digital outputs will be forced to open.

Relays to **Closed**: when the safety timer expires, the relays contacts of the two digital outputs will be forced to close.

At the first reception by radio of a valid packet, the condition of the two relays contacts assume the same status as the two digital inputs of the remote unit.

Its address:

It is the value of the address of this radiomodem. It is advisable to configure each radiomodem with a unique address.

Target address:

It is the address of the target radiomodem, the destination unit.

System Code & Digipeater address (double click of the mouse on "Target" or [Enter] key):

When the focus is on the Target field, pressing the "Enter" key on the keyboard or by double clicking the mouse, a window opens in which you can enter the system code and the addresses of the

digipeater path to include in the radio link. **The system code must be the same for all units in the network.**

Rx Address For Tx:

If enabled, the radiomodem stores the full address (digipeaters and target address) of the unit from which it received the last packet and uses these addresses to send the data received from the DTE connected to it. This function is available only if "Address from DTE" is inactive.

Address from DTE:

If active, the DTE must also provide the addressing for each transmitted packet. To do this, some bytes must be added before of the data bytes. The bytes to add are in this order: one byte for the system code[1....255], one byte-flag with the corresponding bits having the following scope: **bit 0 (lsb) = Broadcasting ; bit1 = ECHO ; bit 2 = ACK request ; bit3 = Diagnostic**. One Byte indicating the number of units [1 9] which includes the target and all the digipeaters used. From 0 to 8 bytes of digipeater addresses disposed in the exact sequence of use. One Byte indicating the target address followed by the data bytes (from 1 to 1024). This function is available only if "Rx Address For Tx" is inactive.

Broadcasting:

If enabled, the radiomodem transmits a special packet that will be received by all the radiomodem that have the same System Code. This function is available only when the ACK is disabled.

Address to DTE:

If enabled, the data downloaded to the DTE will be preceded by the address of the sender. This feature allows the identification of the source of the message.

Baud rate:

This field is used to set the communication speed of the serial line RS485. The admitted values are: 1200, 2400, 4800, 9600, 19200, 38400, 57600 bps

Parity:

By this selector it is possible enable and choose the parity type on the serial line.

Time DTX:

Defines the time between the stop of the data received from the serial line and the transmission of the radio packet. If the packets received are incomplete you must increase this time to mask any pauses between the bytes of the packet sent from the DTE to the radiomodem. The steps are in milliseconds

Diagnostic enab:

When enabled, the radiomodem sends before of the data and, after the address of the sender if "Address to DTE" is enabled, the diagnostic parameters in the following format:

remote rssi (16 bit signed integer, the first byte received is the least significant). The value is expressed in steps of 0.0625 dbm.

remote Vbatt (unsigned 16-bit integer, the first received byte is the least significant). The analog to digital converter used has a resolution of 10 bits. The value is referred to a full scale (0x3FF) corresponding to 5 Volt.

local rssi (16 bit signed integer, the first byte received is the least significant). The value is expressed in steps of 0.0625 dbm.

ACK:

If enabled, the radiomodem that sent a packet waits for the acknowledge from the target radiomodem. If this response it is not received within a fixed time, the last packet is re-sent many times as set in the "Repetition" field. The function is available only if "Broadcasting" and "Address from DTE" are inactive.

Repetition Number:

In this field you can define the number of repetitions of the packet if the acknowledge is not received. This function is available only when the ACK is enabled.

Nak To DTE:

If enabled, the radio modem sends a NAK character (ASCII 21) to the DTE in the case where all repetition are sent without receiving any acknowledge. This function is available only when the ACK is enabled.

Led logic:

This parameter affects the functionality of the LEDs, which indicate the condition of the digital ports. This switch allows you to choose between two options: the leds are always active (which needs more power); the leds are active only when the "LED" button is pressed (which needs less power).

RF Power:

Allows the choice between three different levels of power: High, Medium, Low.

PwSavOff:

Inserting in this field a number greater than 0, the power save feature is enabled. This is the value corresponding to the off period of the energy savings cycles. The step is in the tens of milliseconds. The Master unit is always active but uses this value to size the length of the preamble of the packets sent to a sleeping device (digipeater or slave). If you intend to use the power save feature **all units in the network must have the same "PwSavOff" value**. Note: If the Power Save feature is used, only the Master unit can always receive characters from the serial line; the Slave can only do it during the PwSava period.

PwSava:

When the Power Save is used, by this field you can set the time interval in which the radio modem remains operational (On) after it has been temporarily enabled by an event (i.e.: reception of a packet radio). This value is in steps of hundreds milliseconds. This field is also used to differentiate the device between Master and Slave: **a value of 255 identifies the unit as Master** and keeps it always On. The unit so configured is therefore not affected by the ON-OFF cycles, but the packets are sent with a suitable (longer) preamble time in order to be received by the slave devices that use the Power Save.

Channel selection + Agility + LBT:

In this box you choose the radio channel to be used. If you want to use the agility feature (transmission on the less noisy channel between the active channels), you can select more than one radio channel. The maximum number of active channels is dependent on the canalization setting. **It is mandatory that in the same network all the radiomodems use the same radio channels**. It is possible to enable the LBT feature: the radio modem waits for the channel to become free before proceeding with the transmission of the packet. It is advisable to use this feature together with the agility, to minimize the waiting time of the transmission

AES Enable:

Enable or disable the AES-128 data encryption. In the transmitted packet, the encoding and decoding is done on the payload only.

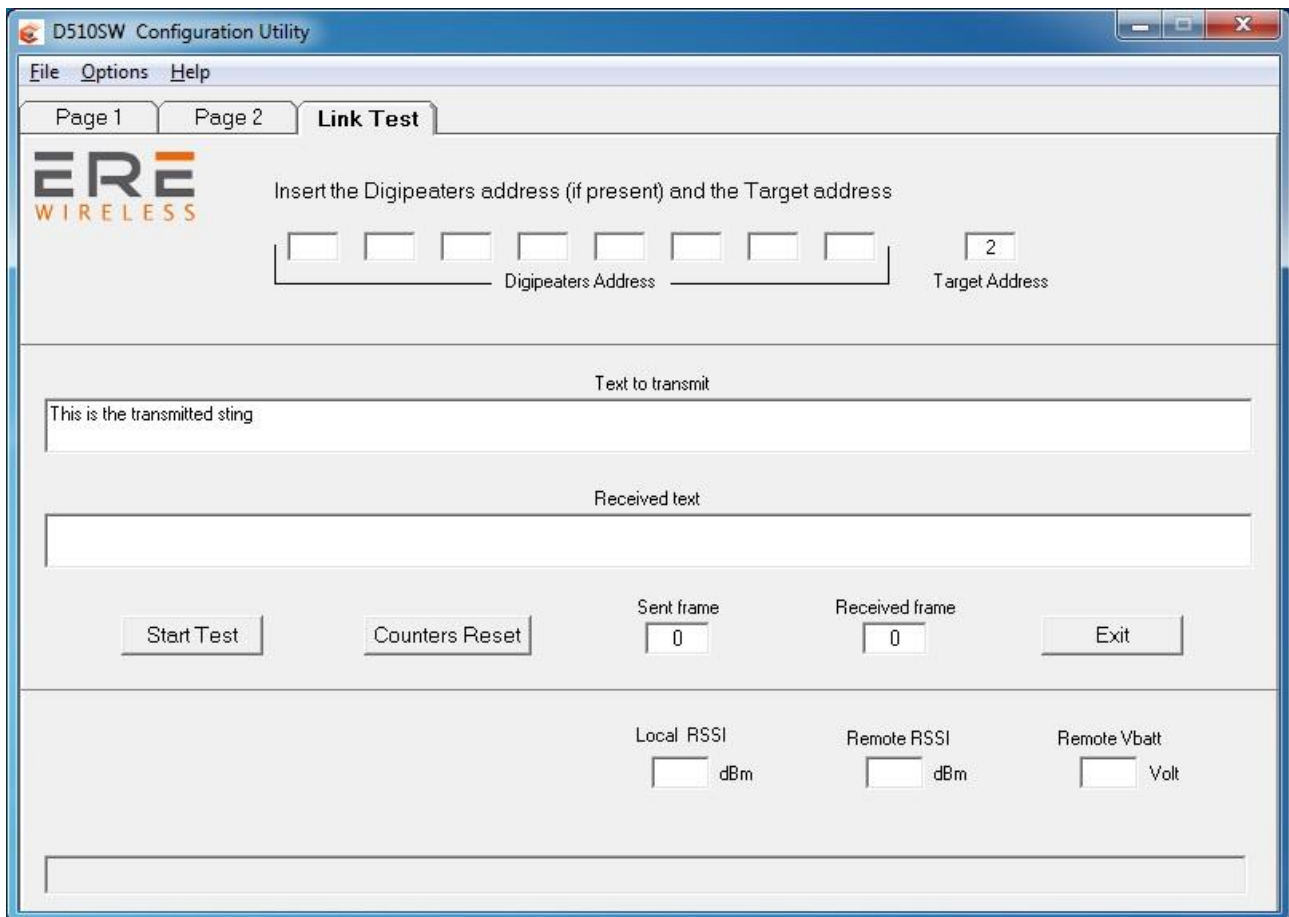
Set AES Key:

By pressing this button a window opens where the value of the 128-bit AES key is set. The user must insert 16 ascii characters. The configurator displays an error message if, upon pressing the "OK" button, the string of the AES key is incomplete (i.e. less than 16 characters are inserted).

Note: If the AES is used, **all the radiomodems in the same network must use the same AES key**. If the key setting is not the same, the data transiting on the serial line are not interpretable by the connected hardware.

LINK TEST

The access to this page is only allowed if, on the first page of the configurator, the "radiomodem" modality is chosen. On this page you can test the communication with the remote radiomodem, evaluate the quality of the radio signal and the level of the battery voltage on the selected units. This feature is only allowed in radiomodem mode, therefore the remote units reply to the link test packets only if they are configured in the same mode. On the local unit, the Link Test function is activated by switching on the radiomodem while holding down the CFG button. The power_on LED (green) confirms the entry into this operating mode by flashing twice the led. The link test function is based on a packet with the "echo" flag active. The DTE sends to the Master radiomodem a characters string (maximum 255 bytes) preceded by the appropriate addressing bytes (it uses the "Addresses from DTE" function). In the response message, the master radiomodem connected to the DTE, sends a byte containing the address of the radiomodem that answered (the function "Address to DTE" is used), followed by six bytes containing the diagnostic parameters: remote_RSSI , remote_VBatt, local_RSSI (there are 16 bit variables) and finally the payload received from the target radiomodem, which is the same string that the Master had previously sent. When the use of the Link Test is finished it is necessary to switch off the radiomodem, then switch it on again without pressing the CFG button. This must be done in order to restore the normal operational functionality.



Operations:

On the page 2 of the configuration program enter the same "system code" and the same power_save settings as the one of the remote radiomodem you want make the link test with.

In order to avoid errors it is advisable to read the configuration from the local radiomodem via the Read button (the radiomodem must be forced in configuration mode before read). In the "Link Test" page, enter the value of the address of the target radiomodem and, if used, enter the values of the addresses of the digipeaters in the exact order of use.

To start testing the reliability of the radio link, press the "Start Test" button: the string present in the "text to transmit" text box is sent. In the "received text" box the received string is displayed; if no errors are found, this string is equal to the sent string, vice versa an error message will be displayed. Each time a string is sent, the "Sent frame" counter is incremented. The "Received frame" counter will be incremented only if the received message is correct. Using the button "Counter Reset", you can reset the counter to zero. During the communications test the diagnostic parameters are also sent. These are: Local RSSI, Remote RSSI, Remote VBatt. These values enable the assessment of the intensity of the radio signal received both from the remote and local units. The RSSI fields are expressed in dBm and have a resolution of 0,0625 dbm. In another box the value of the supply voltage of the remote radiomodem is displayed.

The RSSI provides a correct measurement in the range from -100 to -50 dBm. Values less than -100 dBm (for example -105, -110 dBm) may create communication problems. The saturation of the measured RSSI restricts the maximum value indicated approximately to $-47 \text{ dBm} \pm 3\text{dBm}$, signals of greater intensity return the same indication.

Note: If, in the radio link, one or more digipeater units are used, the level of the RSSI is always referred to the last received signal of the radio stations chain. Example: with four units present in the network (Master "A", first digipeater "B", second digipeater "C", slave "D") the RSSI read from the slave "D" is referred to the reception of the digipeater "C", while the RSSI read from the master A is referred to the reception of the digipeater "B".

If you wish to use the readings of diagnostic (RSSI and VBatt) outside the configurator, the communication with the radiomodem must use the serial data format "9600,N,8,1". The radiomodem send the following hex string:

System code (one byte), **Flag options** (one byte, value 0x08), **quantity of addresses** (one byte), **digipeater addresses** (from 0 to 8 bytes), **target address** (one byte), one **character** (one byte).

Example: 0x01, 0x08, 0x01, 0x01, 0x55. This example uses the system code 1 with only one address: the target (1). The last character (here 0x55) can be of any other value.

The radio modem returns a string consisting of **six bytes**: **Remote RSSI** (two bytes), **VBatt remote** (two bytes), **local RSSI** (two bytes). For each pair, the first byte received is always the least significant byte.

The value of the RSSI is in the format 16-bit signed integer and has a resolution of 0.0625 dbm. Divide the RSSI value by 16 to obtain the result with a step of 1 dbm.

The value of the battery voltage is in the format 16-bit unsigned integer. The formula used to derive the supply voltage in volts is the following: read value * 0.0048828125.

The diagnostic request (bit 3 of the byte flag = set) excludes the normal data exchange.