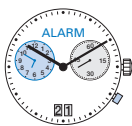


Cal. 4120.B



## English User's Manual

Battery type: 395 (diameter 9.5mm x 2.6mm / SR 927 SW)  
Accuracy: +20 / -10 seconds per month

In case your watch needs to be repaired or to raise claims under a guarantee, please contact the point of sales



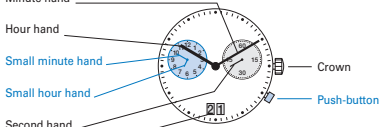
### Description of the display and control buttons

#### Display elements

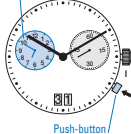
Minute hand  
Hour hand  
Small minute hand  
Small hour hand  
Second hand  
Date

#### Control buttons

Crown  
Push-button



### Alarm time

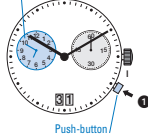


### Setting the alarm time

- 1 Activate the setting mode**  
Press the push-button for at least 2 seconds. As soon as the small minute hand jumps forward one minute, this mode is active.
- 2 Setting**  
**Short pressing** (less than 1 second): the alarm time is moved forward by the minute.  
**Long pressing** (longer than 2 seconds): the alarm time is moved forward until the push-button is released.

**Please note:**  
If the push-button is not activated for 10 seconds, the setting mode of the alarm time deactivates itself. At the same time, two beeps are emitted to indicate that the alarm is switched on.

### Alarm time

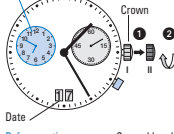


### Switching the alarm on/off

- 1** The alarm is switched on/off by briefly pressing the push-button:  
**2 beeps** → alarm switched on  
**1 beep** → alarm switched off

**Please note:**  
The alarm can be set maximum 12 hours before the desired alarm time.  
Once the set alarm time has been reached, a signal is emitted for 20 seconds. This signal is repeated after two minutes. Following brief pressing of the push-button, the signal is immediately switched off.

### Alarm time



### Setting the time and date

Example:  
- Date / time on the watch: 17 / 1:25 AM  
- Present date / time: 04 / 8:30 PM

- 1** Pull out the crown to position II (watch continues to run).
- 2** Turn the crown until yesterday's date appears 03.
- 3** Pull out the crown to position III (the second hand stops. The display changes from alarm time to reference time.)

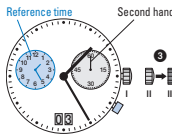
### Reference time



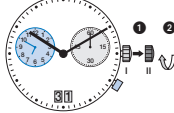
- 4** Turn the crown until the correct date 04 appears.
- 5** Continue to turn the crown until the current time 8:30 PM appears.
- 6** Push the crown back into position I (the display changes from reference to alarm time.)

**Please note:**  
Resetting the time also requires the identical correction of the reference time. Please refer to «setting the reference times».

\* Please observe the AM/PM clock rhythm.



### Setting the date (quick mode)



- 1** Pull out the crown to position II (the watch continues to run).
- 2** Turn the crown until the correct date 01 appears.
- 3** Push the crown back into position I.

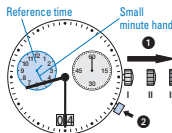
**Please note:**  
The date of the following day must be set in the calendar changing phase between 9 PM and midnight.  
Setting the date too quickly in quick mode can result in the incorrect date being displayed. Switching the date between 01 and 31 (position II) restores the synchronization.

### What is the reference time?

The current time is displayed by means of the hour and minute hand.

Parallel to the current time, the reference time runs in the background: the alarm time refers itself to this reference time. Thus, resetting the time also requires the identical correction of the reference time.

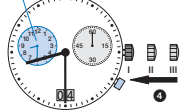
If the reference time is not synchronised with the current time, this results in the alarm signal being emitted at a different time to the set alarm time.



### Setting the reference time

- 1** Pull out the crown to position III (second hand stops. The display changes from alarm time to reference time.)
- 2 Activating the setting mode**  
Press the push-button for at least 2 seconds. As soon as the small minute hand jumps forwards one minute, this mode is active.
- 3 Short pressing** (less than 1 second): the reference time is moved forwards by the minute.  
**Medium pressing:** (1-2 seconds): the reference time is moved forwards by the hour.  
**Long pressing** (longer than 2 seconds): the reference time is moved forwards until the push-button is released.

### Alarm time



- 4** Push the crown back into position I (the display changes from reference time to alarm time).  
A signal indicates that the alarm is switched off.

**Please note:**  
The reference time must display the same time as the current time. This means that resetting the current time also requires the identical correction of the reference time. Afterwards, the alarm time has to be reset.

\* To set your watch «to the exact second», the crown 1 must be pulled out into position III when the second hand is in position 60. The crown 4 must be pushed back «to the exact second» into position I (as a guideline: radio signal, radio clocks, etc.).