



RELEASE NOTES

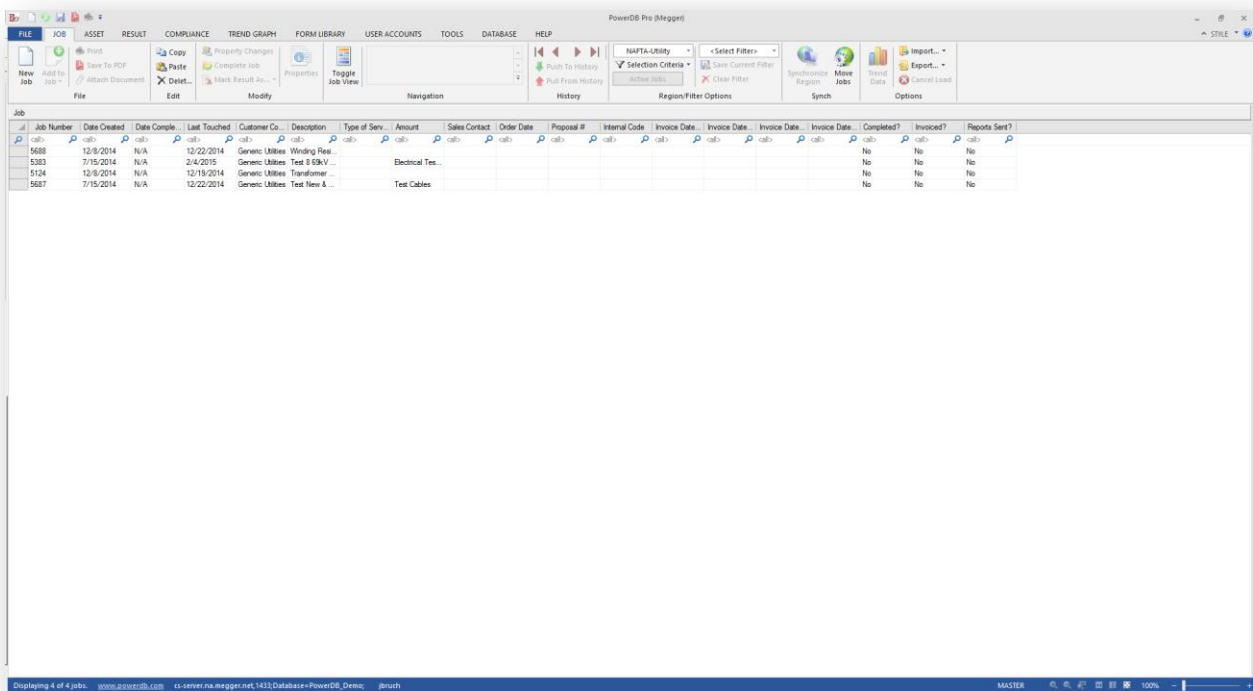
POWERDB PRO SOFTWARE

RELEASE FEATURES

This document serves to provide a brief overview of major changes to the user interface since PowerDB Version 10. For more detailed documentation please refer to the User Manual and V10 to V11 Roadmap documents found under the Help tab within the application.

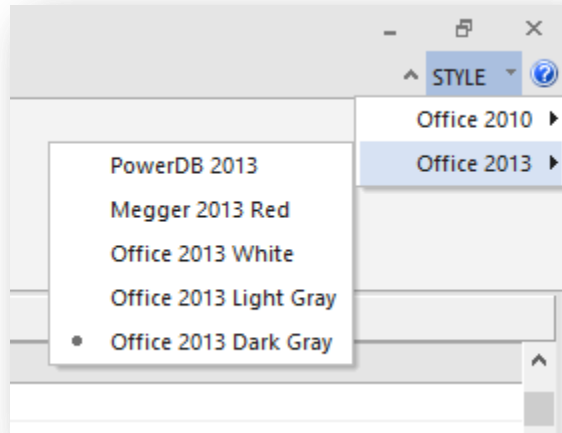
APPLICATION LOOK

Version 11 release of PowerDB incorporates the newer extended Microsoft 'ribbon' look into our software. This will allow our application to expose functionality to the user that was previously located only in menu dropdowns or right click menus.



Additionally we allow the user to change the style of the application to correspond with a Microsoft Office style they are familiar with. This setting will be remembered upon closing the application and defaults to the Office 2013 Dark Grey style.





Select Style menu

PowerDB is now compiled against the latest standards and utilizes Unicode. Most users will not notice a significant difference. However this gives users the ability to enter in special characters. More importantly this allows for translation of the application into languages which use extended or different alphabets.

APPLICATION STARTUP

Instrument drivers will load at the same time the application launches which reduces startup time and allows the user to enter into the application much sooner.

RIBBON NAVIGATION/HISTORY

Within the Job, Asset and Form Library tabs, panels labeled Navigation have been added. These panels will allow the user to quickly switch between views and see a history of the forms they have opened in respect to each individual tab. This will keep a history of the visited assets/jobs/results/forms and subforms for the user to quickly access.

Notes –

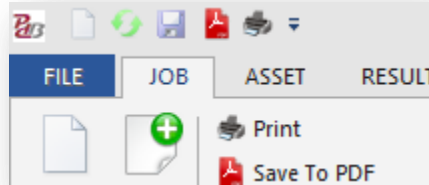
- The history will be erased if the user switches to a different database.
- Each navigation pane is limited to keeping the last 50 visits stored.

SAVE TO PDF

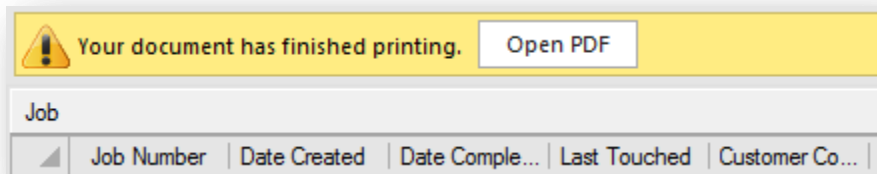
In the previous versions of PowerDB the user could print their jobs and forms to a standard physical printer or a third party 'pdf printer'. PowerDB.v11 eliminates the need to use a third party tool. This feature can be found and used at any point via the PDF icon within the application. Once



the PDF has finished printing, the software will display a message bar providing the user a button to view the PDF.



Use the icon or button to print/save to a PDF



Click the Open PDF to view a recently printed/saved PDF

COMMON GRID VIEW FEATURES

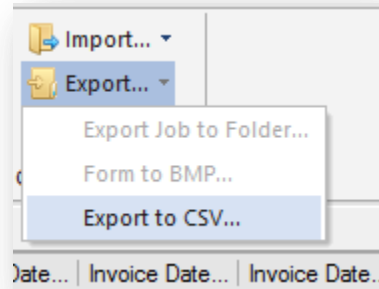
PowerDB V11 provides new List views for Assets and Results. The features described below will be present on the list views for the Jobs, Assets and Results tabs.

- Mass Data Loads
 - o These lists are defaulted to load up to 10,000 items and can handle many more depending on the computer. This option can be changed in the User Options dialog found on the Tools tab.
 - o The status bar will display the following:
 - The number of items currently being displayed based on filter criteria
 - If maxed out –
 - The number of items retrieved from the database
 - The number of items existing in the database.

Displaying 4 of 4 jobs.

- Export to CSV
 - o All of the list views can export the data displayed to .csv format. This will allow users to access and manipulate their data in a number of different ways.





- Filtering
 - These list views allow the user to filter the data presented. Filter selections made in the list are displayed based on further selections set in Selection Criteria dropdown in the Region/Sort/Filter Options ribbon panel.
 - Available Filters
 - > and < can be used on any column
 - A between filter for Date Columns can be used by <date><space><dash><space><date>
 - See picture below for examples
 - Saving filters –
 - If filters are used repeatedly the user also has the ability to save their filters.

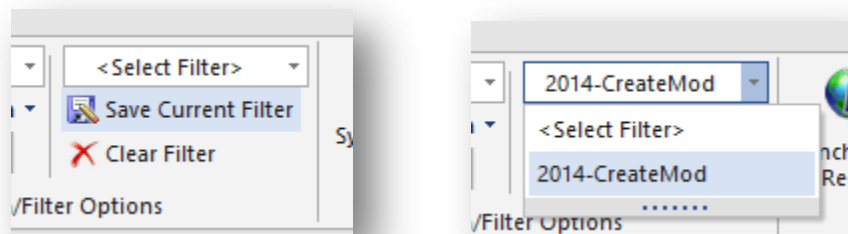
Job							
	Job Number	Date Created	Date Comple...	Last Touched	Customer Co...	Description	
	<all>	<all>	<all>	<all>	<all>	<all>	
	5688	12/8/2014	N/A	12/22/2014	Generic Utilities	Winding Resistance and Battery	
	5383	7/15/2014	N/A	2/4/2015	Generic Utilities	Test 8 69kV OCB's	
	5124	12/8/2014	N/A	12/19/2014	Generic Utilities	Transformer Oil Tests (Weidmann	
	5687	7/15/2014	N/A	12/22/2014	Generic Utilities	Test New & Existing Cables pulle	

The basic list filter mechanic is set in the first row of the list view



Job Number	Date Created	Date Comple...	Last Touched	Customer Co...	Description
<all>	1/1/2014 - 12/31/2014	<all>	<1/1/2015	<all>	<all>
5688	12/8/2014	N/A	12/22/2014	Generic Utilities	Winding Resistance and Battery Tests
5124	12/8/2014	N/A	12/19/2014	Generic Utilities	Transformer Oil Tests (Weidmann/PDC)
5687	7/15/2014	N/A	12/22/2014	Generic Utilities	Test New & Existing Cables pulled by ...

The date filters can be seen in use here



The above pictures show where to save and load saved filters

ASSET LIST VIEW

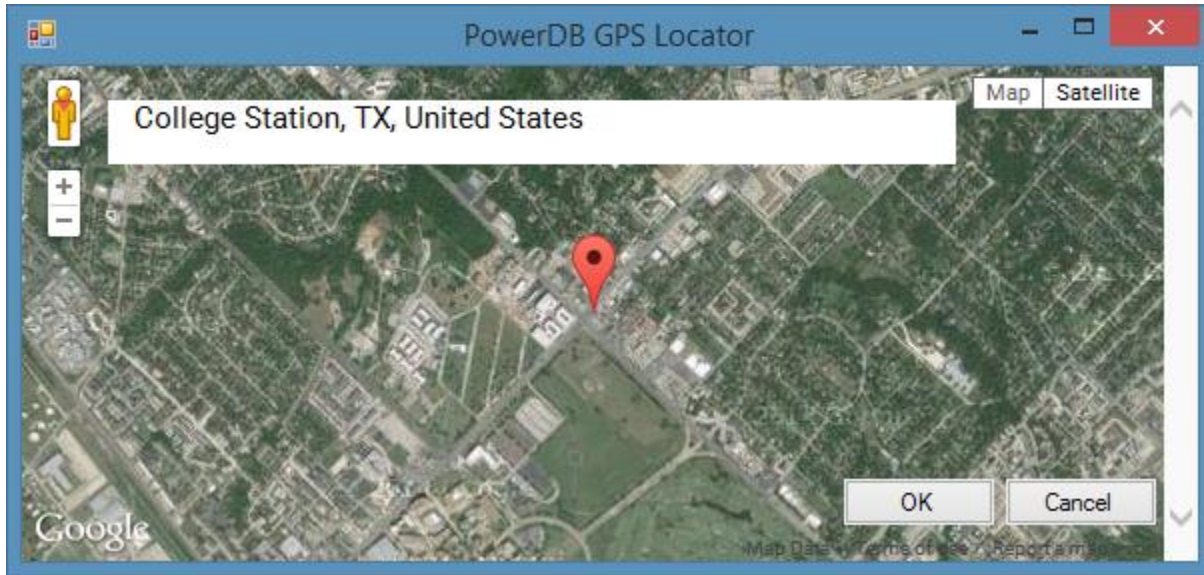
New to Version11 is an Asset list view which is an addition to the Asset tree. This list displays each form (asset) as a single line in the list for the selected region.

The list view provides the ability to use the filter bar to locate assets that match entered criteria. If multiple assets are returned from filter entries, then the user can affect the properties of multiple assets at the same time.

GPS LOCATOR TOOL

In both the asset properties and new asset dialogs (discussed at different locations) we provide the user the ability to set the GPS location for a particular set of assets. This information will be useful to store for other product offerings from PowerDB.





RESULT LIST VIEW

Another new view has been added to PowerDB that displays the number of results that exist within the region selected. This listing provides a snapshot of the region and allows users to filter that data to generate reports based upon testers, dates, number of tests performed, and a multitude of other criteria.

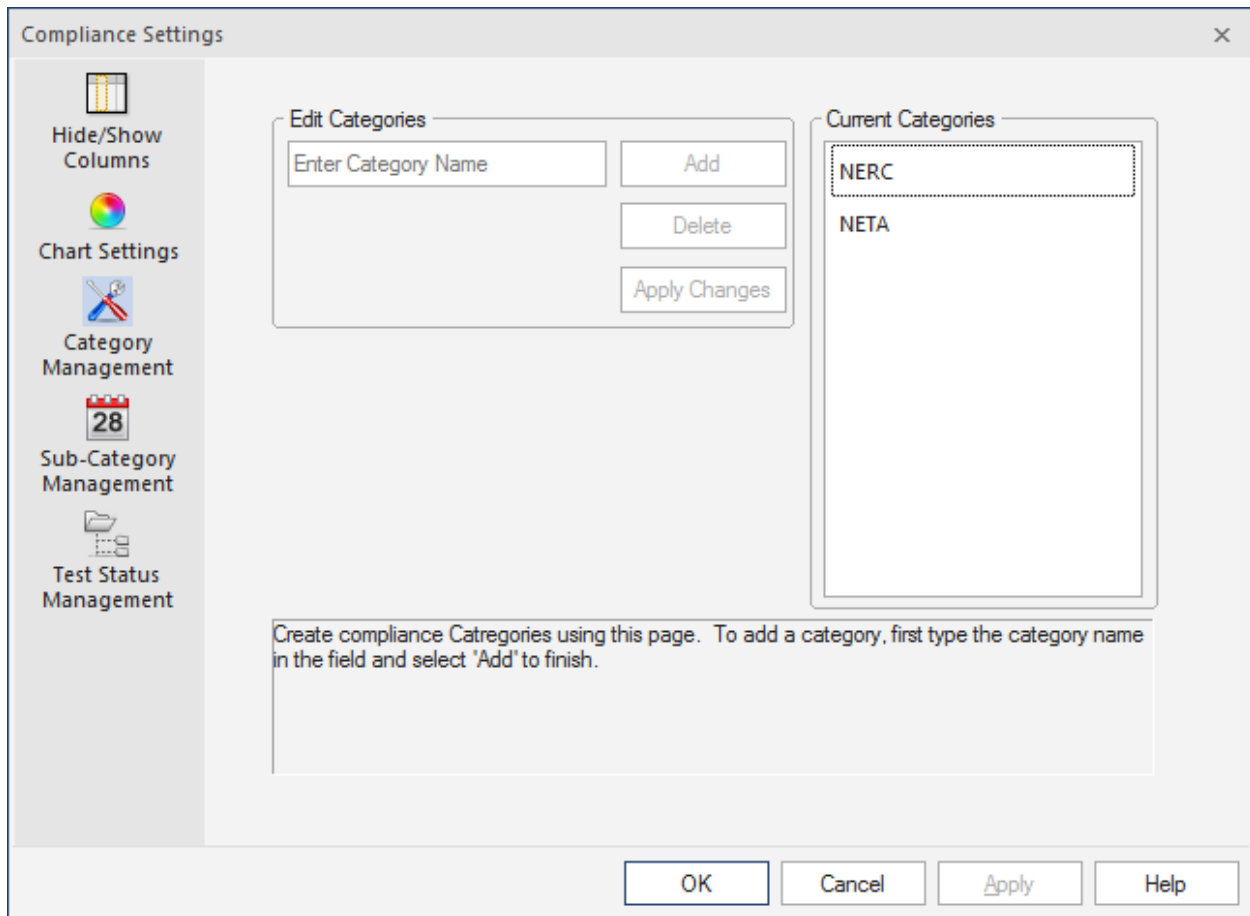
COMPLIANCE VIEW

NOTE: The Compliance View is a purchased option, this feature is not part of the base application.

Version 11 introduces the Compliance View to PowerDB to help users maintain compliance standards for their assets. This tool brings new functionality to the user including:

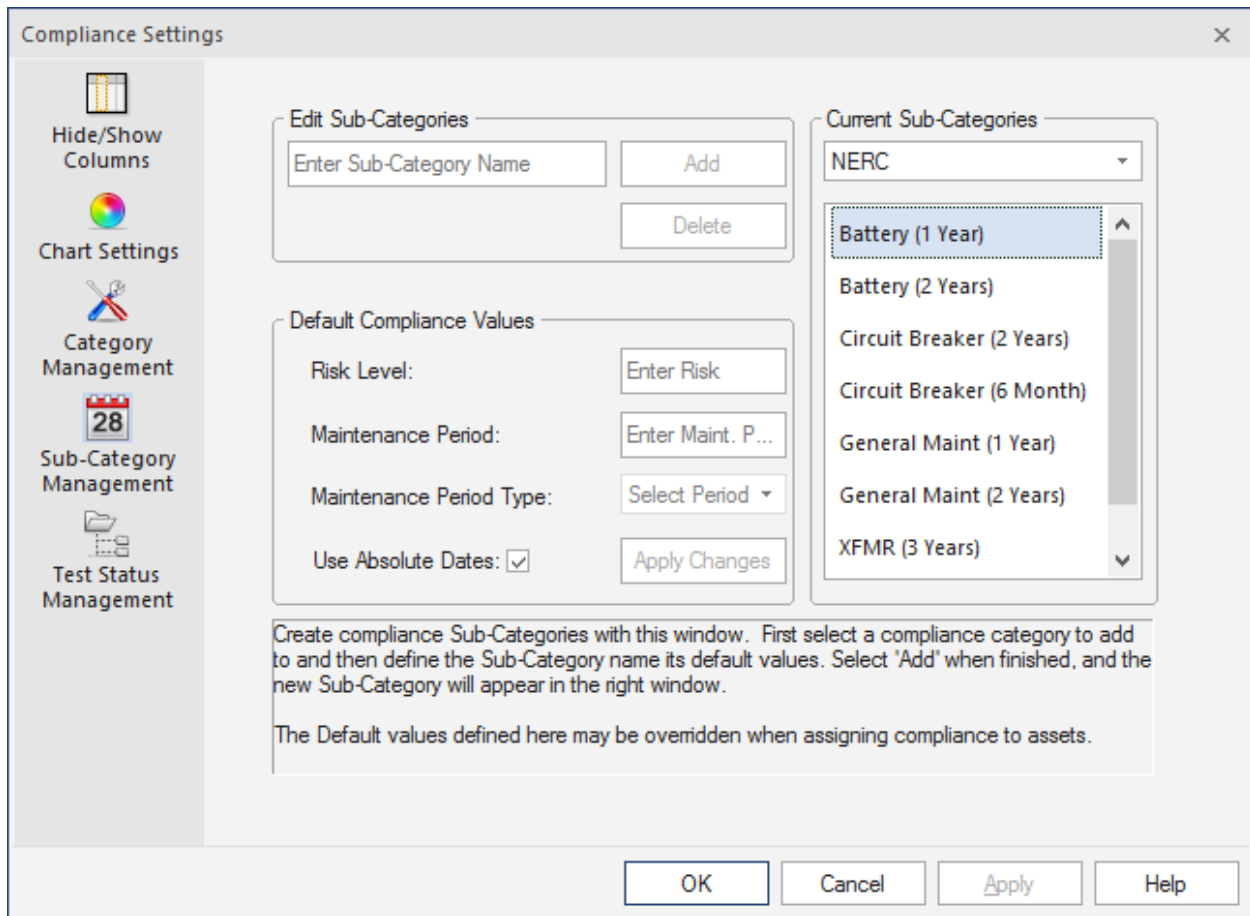
- Create compliance categories (eg, NERC/NETA) and associate subcategories (eg, XFMR-1 Year), to those categories.
 - o The number of categories & subcategories created is not limited.
 - o Effectively replaces NERC Category/Category A/B/C/D/E in PowerDB.v10





- Create maintenance periods/risk levels for each subcategory and assign assets to those sub-categories.





- Ability to assign multiple assets at once, to several different categories.



PowerDB - Assign Compliance

	Region	Asset	Form	Asset ID	Owner	Site	Substation	Equipment	Last Test ...	Number of...	Create Date	Manufactu...	Model
1	NAFTA-Utility	92510 - PF...	92510 - PF...		Generic Uti...	Bridge Riv...	1	K610	12/8/2014	5	7/15/2014		
2	NAFTA-Utility	93500 - PF...	93500 - PF...	GSU2	Generic Uti...	Bridge Riv...	Master Sub	Final Test -...	4/3/2014	1	12/17/2014	650	
3	NAFTA-Utility	13050 - VL...	13050 - VL...		Generic Uti...	Bridge Riv...	Master Sub	Final Test -...	12/17/2014	2	7/15/2014		
4	NAFTA-Utility	10750 - BA...	10750 - BA...		Generic Uti...	Bridge Riv...	23-BAT		12/8/2014	1	12/8/2014		

Select Compliance

Category: NERC

Sub-Category: General Maint (1 Year)

*Red text indicates asset has pre-existing compliance setting.

Properties

Maintenance Interval: 1 Years

Use Absolute Dates: Apply

Assign Compliance

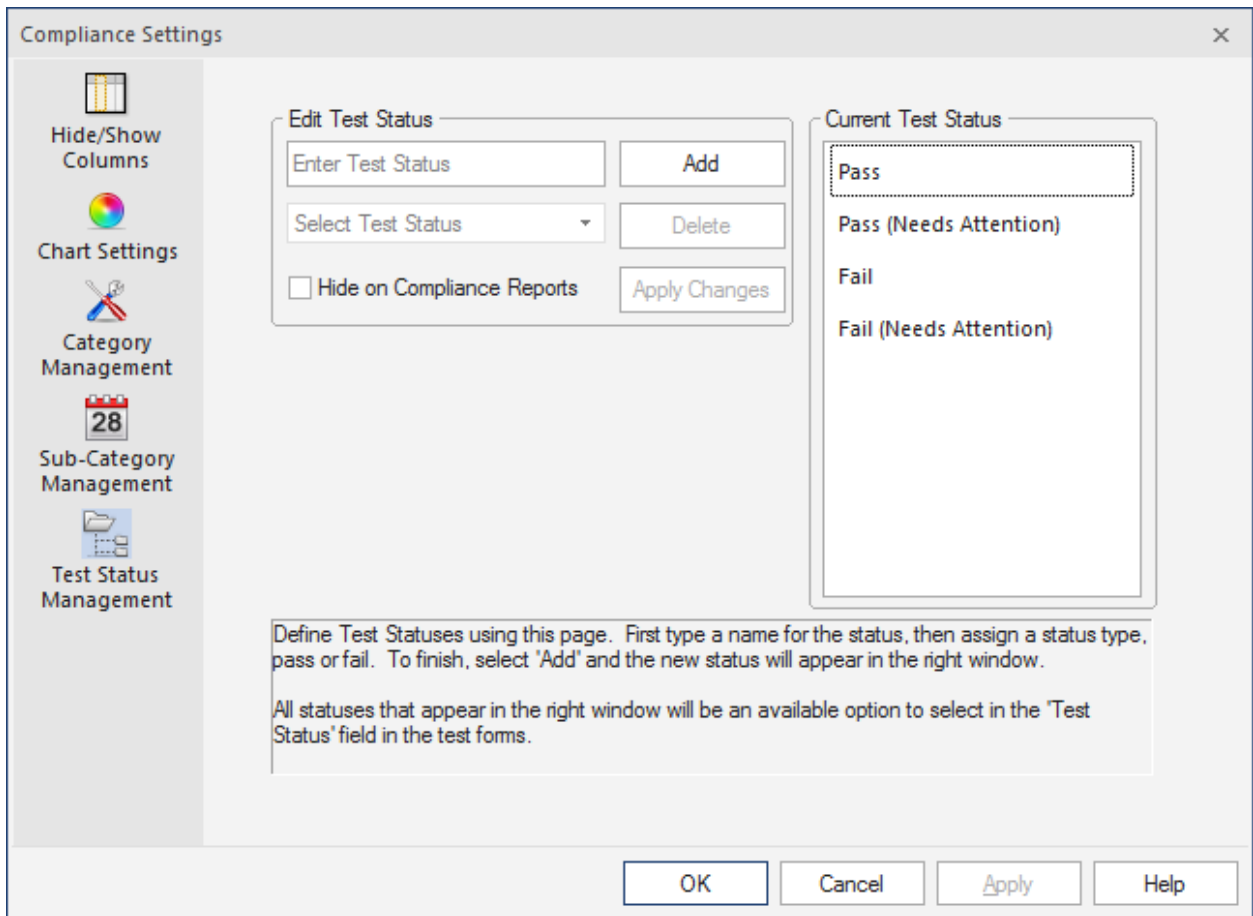
Add Remove

NERC(General Maint (1 Year))

Close

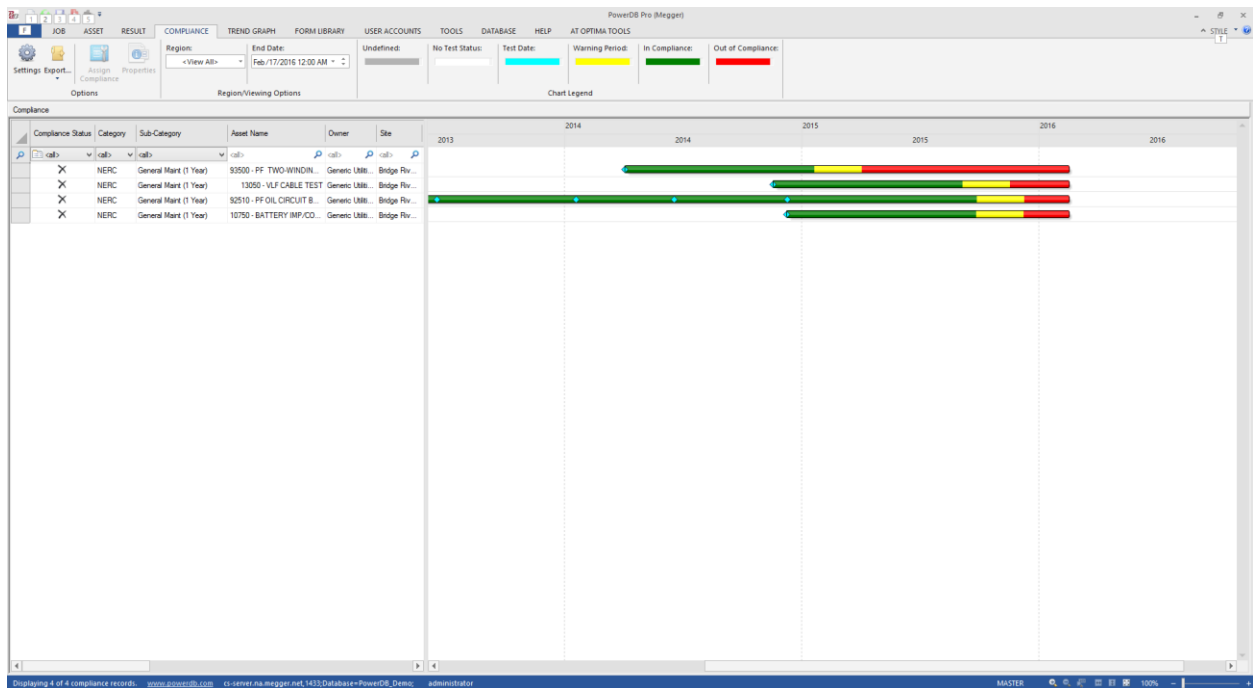
- Create test statuses for each test result, and set a pass fail/and visualize the pass/fail





- View maintenance period in a visual chart.
 - o The chart will display a pass/fail and when the particular asset will need to be tested again.





- View assets compliance in a grid.
 - o All relevant information regarding an asset and its status are located within the filterable grid. This will allow users to build massive compliance structures, and filter the data they need out of the database into the view.
 - o Grid also supports exporting to CSV file for further manipulation.



Compliance Status	Category	Sub-Category	Asset Name	Owner	Site	Substation	Equipment	Maint. Period	Test Status	Form Name	Manuf.	Model	Serial Number	Risk Levels	Type	Previous Test D.	Most Recent To.	Due Date	Number of Tests
X	NERC	General Maint (1 Year)	93500 - PF TWO-WINDIN...	Generic Util...	Bridge River Dam	Master Sub	Final Test ...	1 Year(s)	Pass	93500 - PF TWO...	650	GSU2		0		N/A	4/3/2014	4/3/2015	1
X	NERC	General Maint (1 Year)	13050 - VLF CABLE TEST	Generic Util...	Bridge River Dam	Master Sub	Final Test ...	1 Year(s)	Pass	13050 - VLF CAB...				0		N/A	11/17/2014	11/17/2015	1
X	NERC	General Maint (1 Year)	92510 - PF OIL CIRCUIT B...	Generic Util...	Bridge River Dam	1	KE10	1 Year(s)	Pass	92510 - PF OIL C...				0		6/17/2014	12/6/2014	12/6/2015	5
X	NERC	General Maint (1 Year)	10750 - BATTERY IMP/CO...	Generic Util...	Bridge River Dam	23-BAT		1 Year(s)	Pass	10750 - BATTER...				0		N/A	12/8/2014	12/8/2015	1

JOBLESS STYLE – ASSET OWNER STYLE USERS ONLY

A new admin-only configurable setting has been added that to the Asset Owner style user that allows the users in a database to create assets en masse via the new asset button. These assets will be created and not attached to any particular job and will sit in a “jobless” pool in whatever region they are associated with.

Furthermore, if the user opens up that particular asset from the list view, it will open up in the asset tree view and testing can be performed on that particular asset. The same functionality of creating results/viewing results is now available on an asset without having it first associated with a job. However, if the user wishes to attach the asset to a particular job, they can do so in this view as well.

Essentially, this view does not affect previous functionality, but allows users to create assets and test them in a different way and gives them the ability to put them into the workflow of the previous functionality.



Region	Asset	Form	Asset ID	Owner	Site	Substation	Equipment	Notes	Equipment T...	Latitude	Longitude	Manufacturer	Model
1	NAFTA-Utility	<Select a Form>								0	0		

The new asset dialog

Job #	Date	Description	Customer	User	Pl
5688	12/19/2014	Winding Resistance and Battery Tests	Generic Utilities	<None>	<N
5687	12/19/2014	Test New & Existing Cables pulled by ...	Generic Utilities	<None>	<N
5383	12/19/2014	Test 8 69kV OCB's	Generic Utilities	<None>	<N
5124	12/19/2014	Transformer Oil Tests (Weidmann/PDC)	Generic Utilities	<None>	<N

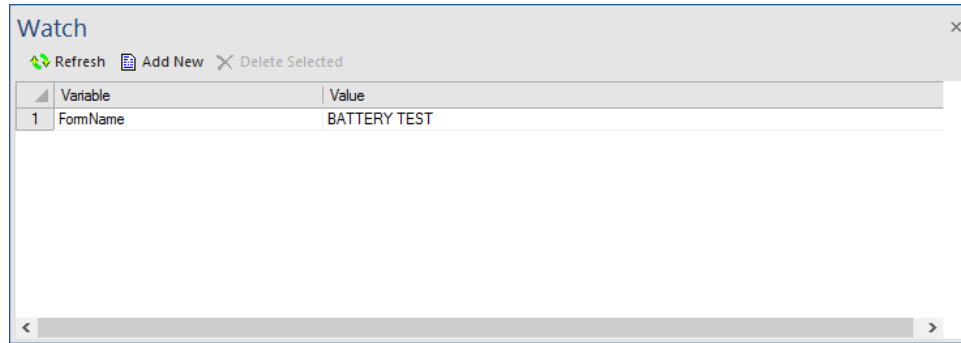
Region: NAFTA-Utility

After selecting an asset the user can attach it to a job via this dialog.

FORM EDITOR WATCH WINDOW

Form editors will be pleased to see that a basic watch window is now included within PowerDB. This window can be enabled via the form editor tab and upon entering variable names in the window will display their values of the active form. This has proven to be extremely useful in debugging form scripting.





Watch window containing value populated from the form

AUTOCOMPLETE ON FORMS

All text entry and numerical fields on the forms will now store a history of the last 50 previously entered values *for that particular field*. As the user types into the field, it will filter out the previous values that don't match the values being typed in.

This functionality is toggle-able and clear-able in the Tools -> User Options -> General dialog.

DOBLE DTA6.0 IMPORT

Previous versions of PowerDB provided support for importing DTA 5 test results files in xml format. Now users will be able to import DTA 6 test result files that have extension of dtax.

FLIR-P640 IMPORT

Import functionality has been added for the FLIR Model P640 infrared camera. Images from the P640 can be imported into a test form and embedded temperature data can be accessed and read to determine reference and problem points on the image.

CRASH REPORTING

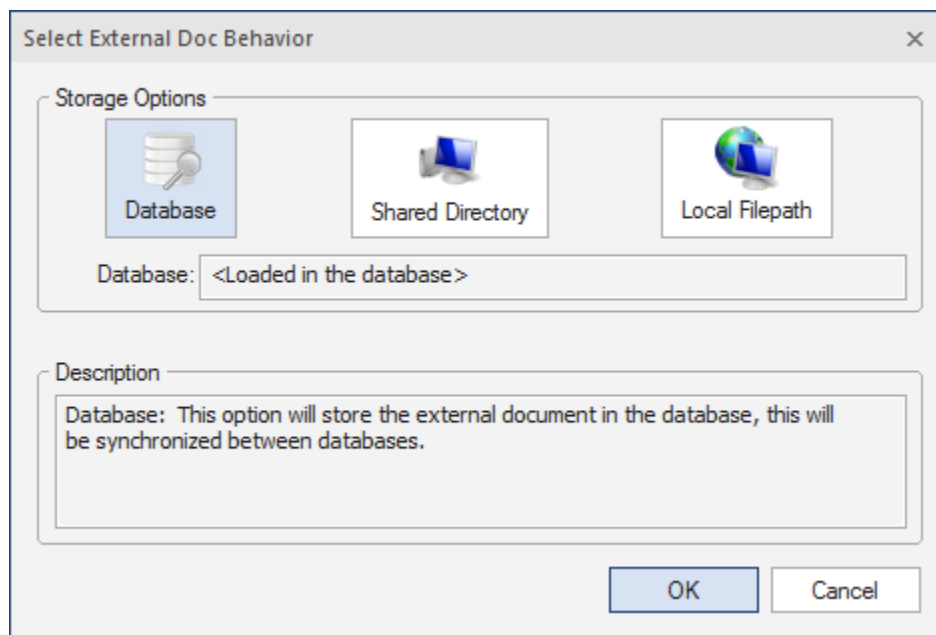
Version 11 includes a crash reporting service that will handle any crashes and prompt the user to send the data back to PowerDB. No personal information is saved, and will help to improve the stability of the product.



ENHANCEMENTS

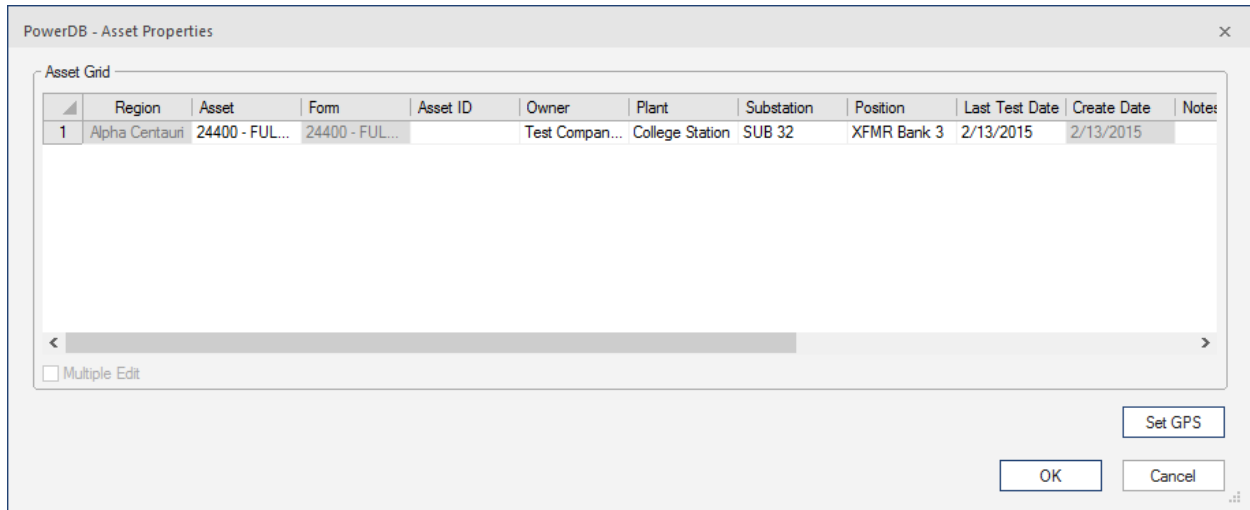
ATTACHING EXTERNAL DOCUMENTS

- Drag and drop
 - o Attaching files to any point in the tree has just gotten easier, the user can now drag files from their file system and drop them on any point in the tree and it will attach them at that location.
- Three storage options
 - o Database
 - This is the traditional storage option, if this is selected the file will get stored in the database and synchronized to all users.
 - o Shared Directory
 - New option that allows the user to select a file on their local drive and it will copy it to a shared folder (configured in the User Options).
 - On attempting to open the file, if it exists via the shared drive it will open, otherwise it will not. The location of these files will get synchronized into the database.
 - o Local Filepath
 - Last option that will allow users to store the files on their local file system. The path will get stored in the database.
 - Upon opening the file, if the file exists at that location it will open, otherwise it will not be available.



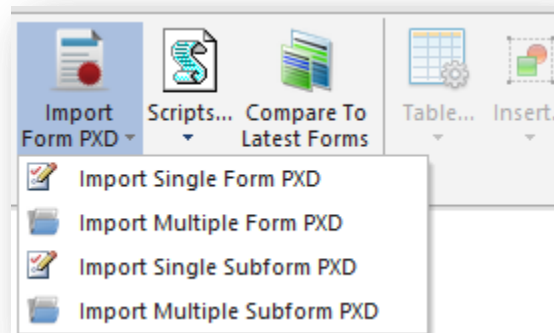
ASSET PROPERTIES

The asset properties dialog has been reworked to allow the user to see all the properties of a particular asset. Additionally this dialog will allow the user to modify the properties of an asset in bulk as well.



IMPORTING PXD FILES

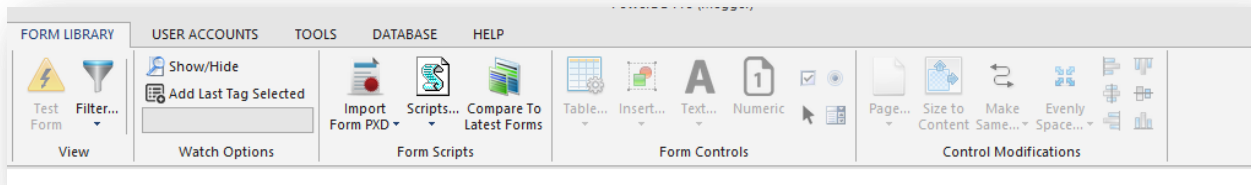
Importing form files, known as PXD files, has gotten a makeover. Instead of having to import them one at a time, the user can now import several forms at a time. Essentially this just loops the previous behavior and the actual process of importing is the same.



REMOVAL OF FORM TOOLS



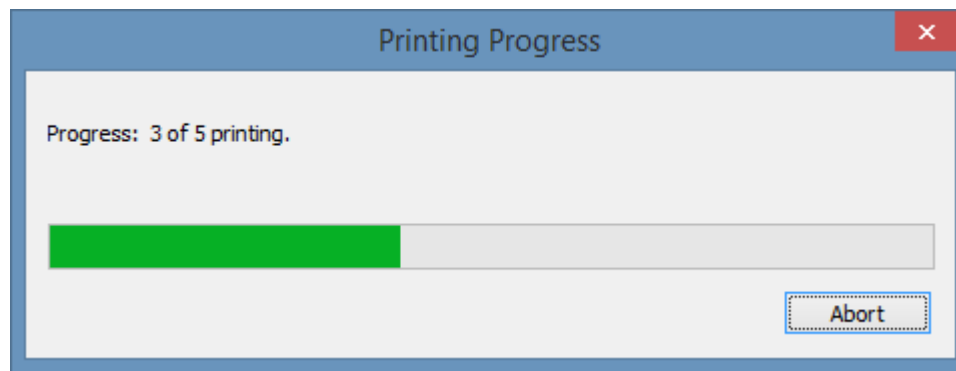
All previous versions of PowerDB provided the form tools palette which was a free floating dialog that was often distracting and could get hidden behind different windows. In Version 11, this has been removed and all the functionality has been moved to the ribbon bar under the Form Library tab.



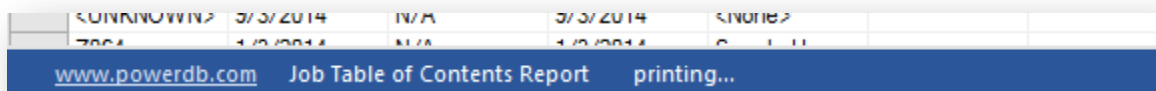
PRINTING PROGRESS

This update allows the user to cancel out of a print job and provides a clear indication that the application is doing work.

Furthermore, in previous versions if a form had a scripting error the printing would stop and occasionally crash. This has been remedied and the user will not experience a crash but will be notified via message box and log message at the end that a scripting error occurred.



During prints, a dialog appears allowing the user to abort.

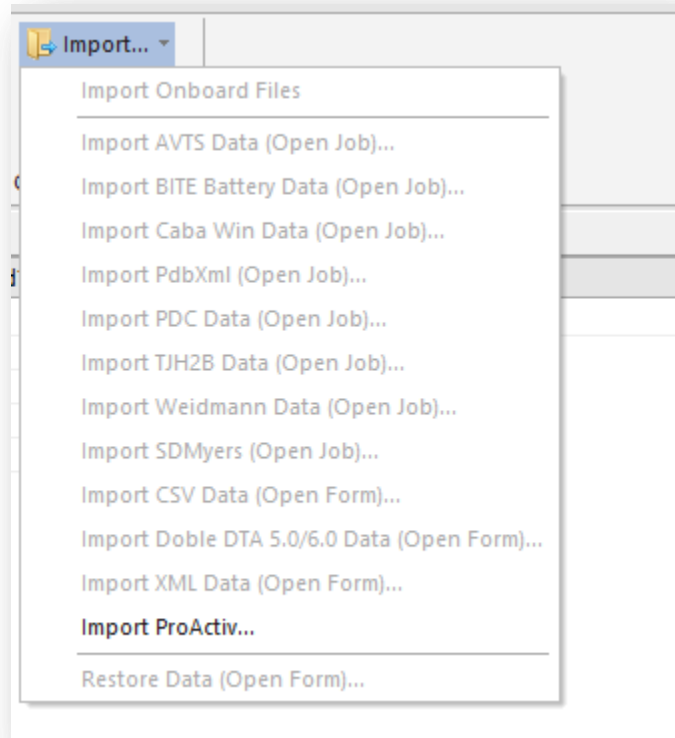


Print updates are posted to the status bar



IMPORT DESCRIPTIONS

PowerDB contains the ability to import many different types of data. These imports can vary from form level to importing entire jobs. Due to this, we have added clarification to the user when they open the import menu that will describe to the user what context (ie, open a job) is required for the import to be enabled.



LICENSING OVERHAUL

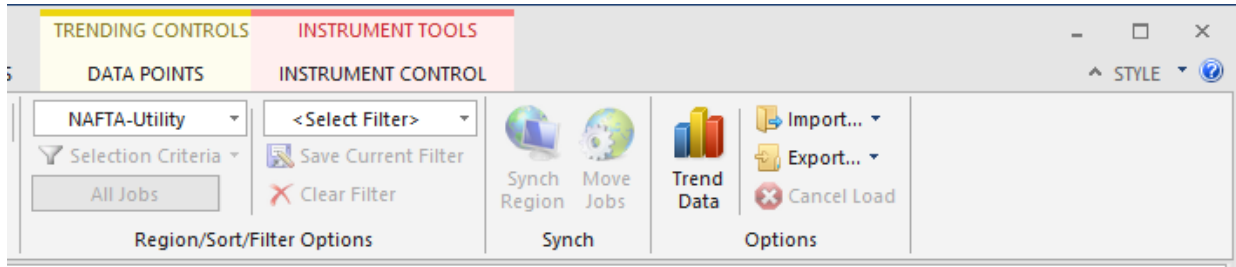
The overhaul of the licensing dialog makes it more intuitive for the user. The dialog is still accessed via the Tools tab. Detailed specific instructions can be found at Tools -> Licensing -> How To License.

TRENDING ENHANCEMENTS

When viewing a saved result in a Job or Asset you may access trending at the Options panel. Trending capability has been enhanced to allow multiple data points on a test form to be displayed on the same chart. The chart and table of data can be exported for use in other software.



The database can also be queried to locate similar assets for their inclusion on the chart. The addition of new chart types and enhanced graphics improves the interface for the user.



ESTS						
Cap. (pF)	POWER FACTOR %			Equivalent @ 10 kV		IR
	MEAS.	20° C	CORR.	mA	WATTS	
00,535.0	0.44	0.67	1.520	37.901	0.0000	G
	0.40	0.61	1.520			G
			1.520			
			1.520			
			1.520			
			1.520			



Job: 5383, 12/8/2014 - Pass - Rev - 2/11/2015 12:24:39 PM - PowerDB Pro (Megger)

TRENDING CONTROLS INSTRUMENT TOOLS

FILE JOB ASSET RESULT COMPLIANCE TREND GRAPH FORM LIBRARY USER ACCOUNTS TOOLS DATABASE HELP AT OPTIMA TOOLS DATA POINTS INSTRUMENT CONTROL

Select Lines Trend Line Management Comparison Filter Management Selection Options Close All Trending Misc.

Click to select fields to trend. Close

Selected Job: Job: 5383
 Owner: Generic Utilities
 Site: Bridge River Dam
 Substation: 1
 Equipment: K610
 16201 - OIL CIRCUIT BR
 92510 - PF OIL CIRCUIT
 1/17/2013 - Pass
 6/17/2013 - Pass
 1/17/2014 - Pass
 6/17/2014 - Pass
 12/8/2014 - Pass
 Equipment: Y610
 16201 - OIL CIRCUIT BR
 92510 - PF OIL CIRCUIT
 Substation: 3
 Equipment: K630
 16201 - OIL CIRCUIT BR
 92510 - PF OIL CIRCUIT
 Equipment: X630
 16201 - OIL CIRCUIT BR
 92510 - PF OIL CIRCUIT
 Equipment: Y630
 16201 - OIL CIRCUIT BR
 92510 - PF OIL CIRCUIT
 Equipment: Z630
 16201 - OIL CIRCUIT BR
 92510 - PF OIL CIRCUIT
 PDB Documents
 Field Service Report

TANKS CONTROL VOLTS OIL TEMP 2 °C
 OIL TYPE CONVENTIONAL COUNTERS COOLANT OIL PHASE NAMES CLASS LAYOUT
 Settings
 Save to DTA Hot Collar

CIRCUIT BREAKER OVERALL TESTS

CB	TEST NO	INSULATION TESTED	Ph	TEST MODE	BUSHINGS CONNECTIONS				TEST kV	Cap. (pF)	POWER FACTOR %			Equivalent @ 10 kV		IR
					ENG	BUS	ft	INS #			TLI	MEAS.	20° C	CORR.	mA	
OPEN	1	C1G		GST-GND	1				10.01	100,535.0	0.44	0.67	1.520	37,901	0.0000	G
	2	C2G		GST-GND	2				10.00		0.40	0.61	1.520			G
	3	C3G		GST-GND	3				10.00				1.520			
	4	C4G		GST-GND	4				10.00				1.520			
	5	C5G		GST-GND	5				10.00				1.520			
	6	C6G		GST-GND	6				10.00				1.520			
CLOSED	7	C1G + C2G		GST-GND	1&2				10.00				1.520			
	8	C3G + C4G		GST-GND	3&4				10.00				1.520			
	9	C5G + C6G		GST-GND	5&6				10.00				1.520			

BUSHING AND OIL TESTS

TEST NO.	SERIAL #	NAMEPLATE	% PF	CAP.	Dsg	Test Mode	TEST kV	Cap. (pF)	POWER FACTOR %			mA	WATTS	IR	
										MEAS.	20° C	CORR.			

Page 1 Page 2

To see details press [shift] and move the mouse above assets and results in the tree. www.powerdb.com demo_database.mdb administrator MASTER 99%

PowerDB Pro (Megger)

TRENDING CONTROLS INSTRUMENT TOOLS

FILE JOB ASSET RESULT COMPLIANCE TREND GRAPH FORM LIBRARY USER ACCOUNTS TOOLS DATABASE HELP AT OPTIMA TOOLS DATA POINTS INSTRUMENT CONTROL

Chart Type: Line Graph
 Theme: Default Theme
 Format X Axis: Days
 Chart Options: Auto Save As Refresh Image Remove Selected Clear All Reset Trends Export to CSV Copy to Clipboard Colored Zones Line Labels Markers Show Chart Elements Rotate Chart

Trend Data

Trending Data Points (Days)

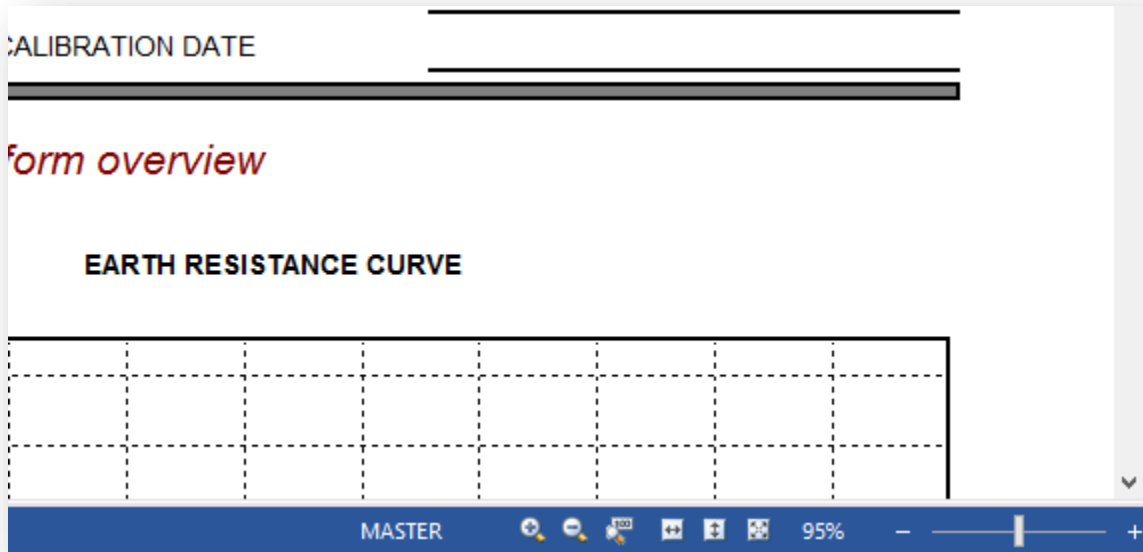
Asset	Tag Name	Scale Group	Scale Factor	Scale Offset	Trend Group	Min	Max	Average	Standard Deviation	Show Trend
1	92510 - PF OIL CIRCUIT...	PF_2	Scale Group 1	1	0	0.4	0.44	0.43	0.015	<input checked="" type="checkbox"/>
2	92510 - PF OIL CIRCUIT...	PF_20_2	Scale Group 1	1	0	0	0.420200006	0.21	0.188	<input checked="" type="checkbox"/>
3	92510 - PF OIL CIRCUIT...	CORR_2	Scale Group 1	1	0	0.955000013	1.52	1.068	0.226	<input checked="" type="checkbox"/>

To see details press [shift] and move the mouse above assets and results in the tree. www.powerdb.com g-server-na.megger.net:1433;Database=PowerDB_Demo; administrator MASTER 94%



FORM ZOOMING

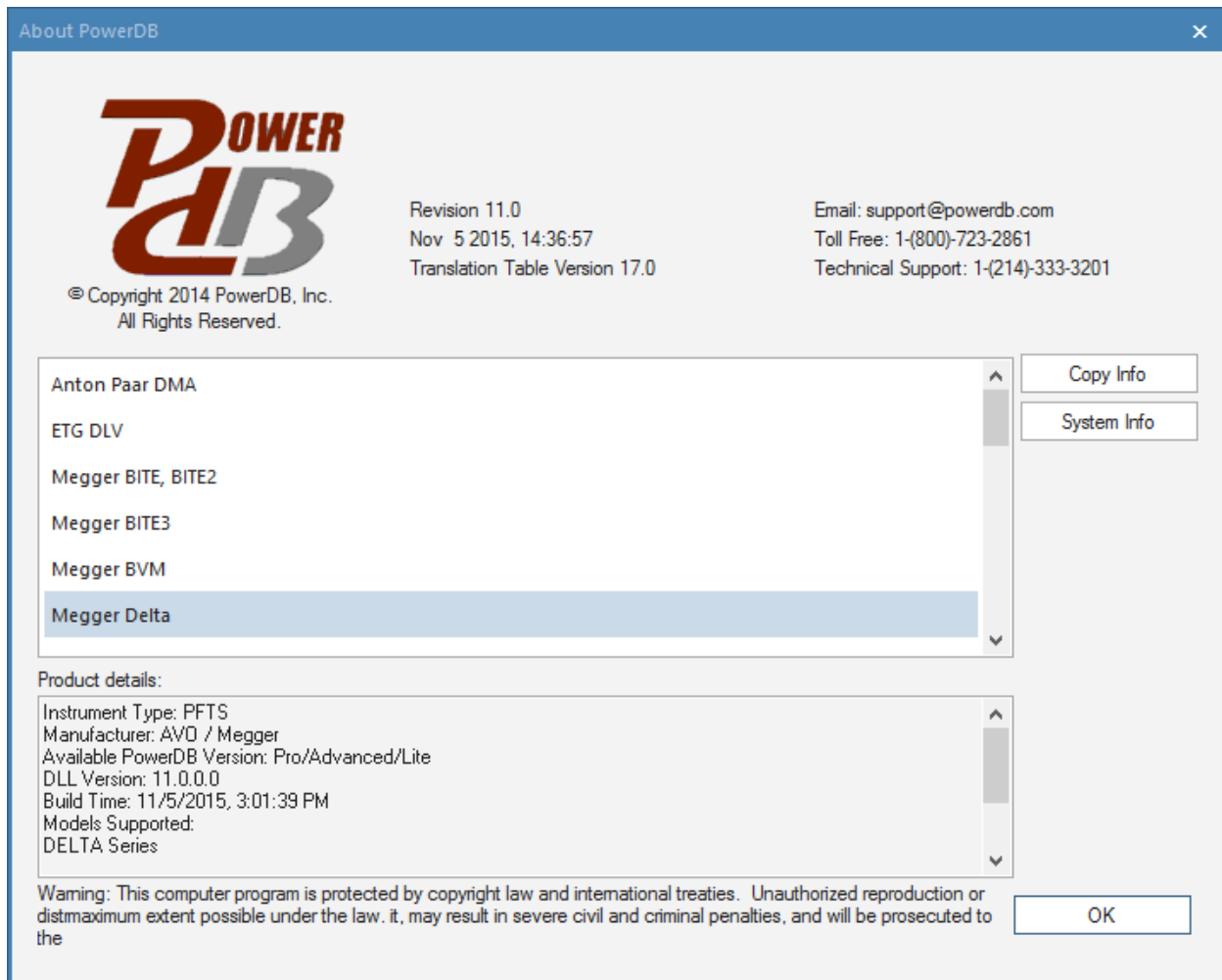
Zooming in and out of the forms has changed to conform to use the status bar as a way to zoom in and out of the forms. Additionally the zoom can also be controlled by holding control and using a mouse scroll wheel.



ABOUT MENU

The Help -> About PowerDB menu has received an overhaul as well, the new menu will display all the drivers that have been included with the install of PowerDB. Highlighting one of the drivers will display all the relevant information for that driver. This will help in diagnosing and troubleshooting any issues that arise. Additionally, the copy info button will copy all the relevant information into the clipboard for later use.





RESULT TEST STATUS

Version 11 provides for a 'Test Status' field to be added to the header to indicate the results of testing. This status indication is displayed in the Job Tree and Result List views.

To add this field to the Header there must be a Read Only field with a tag name of TestStatusHdr and the line of scripting added to the On Select tab as shown below.



The screenshot shows a software interface with a 'Text Properties' dialog box and a 'Script Editor' below it. The 'Text Properties' dialog has a 'Tag Name' field containing 'TestStatusHdr' and a 'Data' dropdown menu. It contains several checkboxes: 'Read Only' (checked), 'Compress' (checked), 'Can Grow' (unchecked), 'Transparent' (unchecked), 'Hide On Print' (unchecked), 'Required' (unchecked), 'Wrap Text' (unchecked), 'Automated Control' (unchecked), 'Do Not Translate' (unchecked), 'Fit To Content' (unchecked), 'Grow Right' (selected in a dropdown), and 'No Embedded Hide' (unchecked). There are also fields for 'Justification' (Center), 'Orientation' (Standard [0°]), 'Alignment' (Center), 'Lines' (1), and 'Field Length Limit' (0). The 'Script Editor' below has a menu bar with 'Edit' and 'Options', and a toolbar with buttons for 'On Initial Update', 'On Update', 'On Select', 'On Enter', and 'On Right Click'. The script content shows a single line: `.this = ShowandGetTestStatus();`

The form contains the following fields and values:

- OWNER: _____
- ADDRESS: _____
- CUSTOMER ADDRESS: _____
- SUBSTATION: 1
- SITE: Bridge River Dam
- EQUIPMENT: K610
- PAGE: _____
- JOB #: 5383
- ASSET ID: _____
- DATE: 12/8/2014
- AMBIENT TEMPERATURE: _____ °C
- HUMIDITY: _____ %
- TEST STATUS: Pass

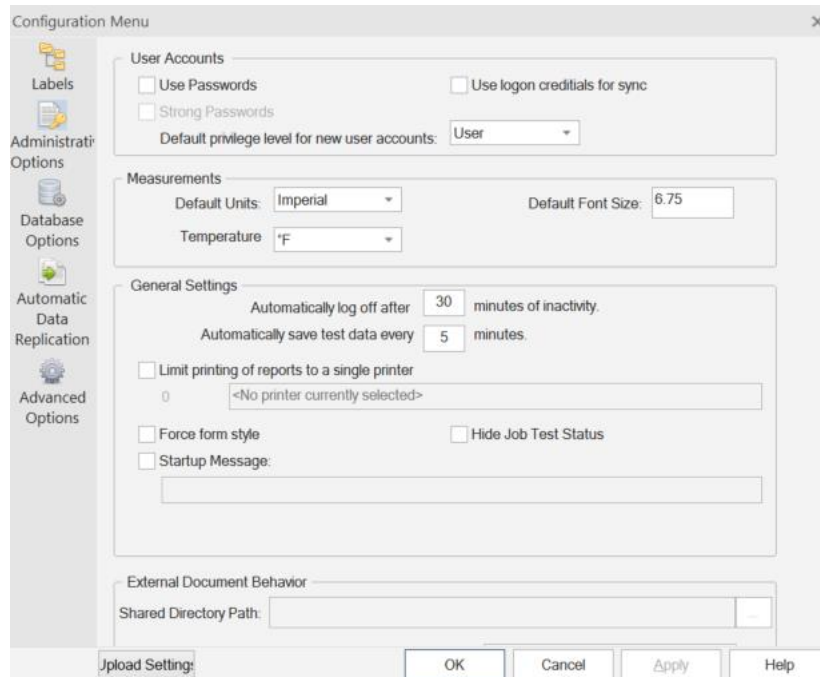
The tree view shows the following structure:

- Owner: Generic Utilities
 - Site: Bridge River Dam
 - Substation: 1
 - Equipment: K610
 - 16201 - OIL CIRCUIT BREAKER TEST
 - 92510 - PF OIL CIRCUIT BREAKER
 - 1/17/2013 - Pass-Needs Attention
 - 6/17/2013 - Pass
 - 1/17/2014 - Pass NERC (FI)
 - 6/17/2014 - Pass-Needs Attention
 - 12/8/2014 - Pass



DATABASE ADMINISTRATION

Database configuration settings are now found at the Tools tab -> General -> Database Admin. The former tabs have been replaced with buttons placed vertically to the left of the settings fields.



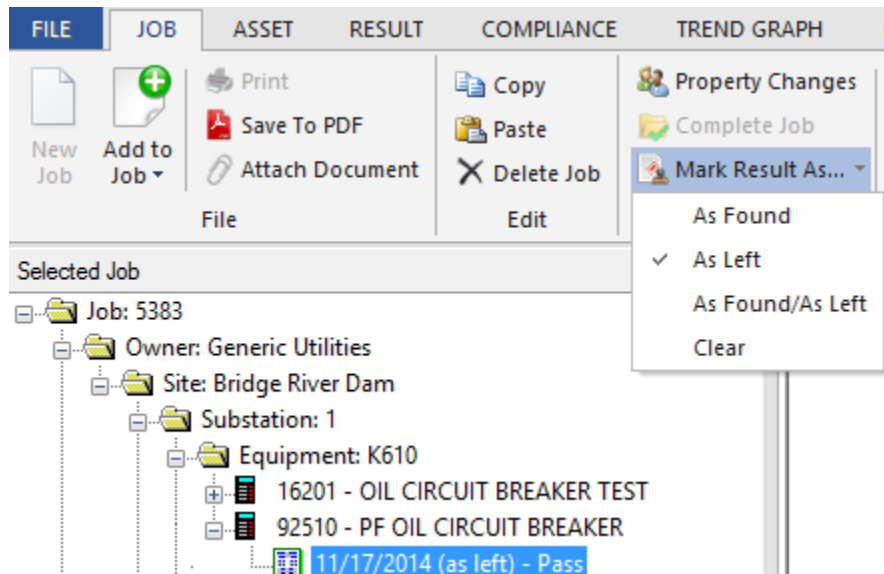
USER OPTIONS

User Options are now found at the Tools tab -> General -> User Options. The former tabs have been replaced with buttons placed vertically to the left of the settings fields.

RESULT AS FOUND/AS LEFT

Results may be marked As Found, or As Left, or As Found/As Left at the Job Tab -> Modify panel on the ribbon. This designation is displayed in the Job Tree and Result List views.





FIXES

LOSS OF DATABASE CONNECTION

Previously in PowerDB, if the user lost connection to a database and then tried to perform any action, the software would hard crash. Instead of hard crashing, the software now alerts the user that a database connection has been lost and will shut down the software after the warning.



INSTALLATION NOTES

Version 11 (V11) of PowerDB Pro Software incorporates the latest features added to the software. A description of the new features and the steps to install this version are described below.

If you are updating from a version earlier than Version 9:

- **Contact our office before you run the update**
- **Synchronize all field databases to the master before updating**

If you are updating from Version 10:

Run the installer with Windows administrative privileges. If you are running Windows 8.1, 8, 7 or Vista, right-click > 'Run as Administrator' on your machine.

You are recommended to backup all databases prior to installing any update.

V11 will not affect an existing installation of Version 9 or earlier. To avoid having multiple versions of PowerDB installed on your machine, Version 9 or earlier should be uninstalled.

V11 will automatically upgrade a previous installation of 11, for example 11.0 to 11.2, but with the identical installation options. So if 11.0 Advanced was first installed but not Pro, then running a newer 11 installer will not add the Pro shortcuts.

If you want to change installation options, such as adding Lite or Pro, then PowerDB 10 must first be uninstalled.

- Click on the Windows 'Start' icon,
- Select Control Panel
 - o Windows XP – Add or Remove Programs
 - o Windows Vista – Programs and Features
 - o Windows 7/8/8.1 – Programs > Programs and Features

Version 9 or earlier will be listed as 'PowerDB' in the program list and Version 10 & 11 will be listed as 'PowerDB 10' and 'PowerDB 11' respectively. Select the appropriate item and choose to uninstall.

If Version 9 fails to uninstall or if the uninstall option is not present, then download and run the PowerDB installation cleaner file from <http://www.powerdb.com/download/PdbInstallCleaner.exe>. Note that this installation cleaner only affects version 9 or earlier.

The uninstall process will not remove any custom shortcuts. Please modify shortcuts as necessary, noting that the default installation directory is now

32-bit - "C:\Program Files\PowerDB Inc\PowerDB.v11\powerdb.exe"

64-bit - "C:\Program Files (x86)\PowerDB Inc\PowerDB.v11\powerdb.exe"



ADDITIONAL NOTES

- Do not forget to update any intermediary databases (i.e., databases on USB drives used for synchronization).
- You will need to install V11 on all LAN machines before proceeding with data entry and on all field machines before synchronizing again.
- When connecting to an older version's database with a new major version of PowerDB (such as connecting to a V10 database with V11) PowerDB will prompt you to update the database schema.
 - o Respond Yes to this prompt.
 - o The software will prompt you to create a backup prior to update.
 - We recommend you respond Yes to this prompt.

