

Spa Owner's Manual



TABLE OF CONTENTS

INTRODUCTION -----	1	Jet instruction -----	5
MAIN FUNCTION AND PRODUCT CHARACTERISTICS -----	1	Air Controls instruction -----	6
IMPORTANT INSTRUCTIONS -----	2	Water Diverter instruction -----	6
Drainage requirement -----	2	Aromatherapy canister instruction (Option) -----	6
Risk of electric shock -----	2	Water flow control instruction (Option) -----	6
Temperature -----	2	Multimedia system instruction (Option) -----	6
Medical conditions -----	2	SPA WATER MANAGEMENT & MAINTENANCE -----	7
Soak and cool time -----	2	The effect and adjustment of PH -----	7
Alcohol use and medication -----	2	PH adjustment -----	7
Child safety -----	2	Disinfection of the water -----	7
Preventing slips -----	2	The application of other special Chemical products -----	8
Electrical appliances -----	3	SPA CLEAN AND MAINTENANCE -----	8
Wether conditions -----	3	SPA surface clean and maintenance -----	8
Ventilation -----	3	Control panel maintenance -----	9
Chemicals -----	3	Pillow maintenance -----	9
SPA INSTALLATION -----	3	SPA cover maintenance -----	9
Positioning and location of the SPA -----	3	Filter maintenance -----	9
Location requirement -----	4	When your SPA is not in use -----	10
Electrical requirements for your SPA -----	4	TROUBLES SHOOTING -----	11
SPA MAINTENANCE -----	4	THE LIMITED WARRANTY AND AFTER SALES SERVICE -----	12
Filling your SPA -----	5		
Draining your SPA -----	5		
SPA control panel instruction -----	5		

INTRODUCTION

- Welcome to your new spa. With the correct preparation and care, your new spa will provide you with many years of fun and relaxation. Please find the “USER MANUAL”, “CONTROL SYSTEM MANUAL” and “Quick Start Guide” in the product attachment.
- This manual has been developed to provide you with the information that you need regarding the preparation, installation, care and operation of your new spa. Please take the time to carefully read the entire manual to ensure that your spa preparations are carried out correctly. Also make sure that you familiarise yourself with the important safety instructions before using your spa.
- If you have any question or doubt on the operation or maintenance of this product, please contact your local dealer.

MAIN FUNCTION AND PRODUCT CHARACTERISTICS:

- Hydrotherapy function:** The product comes with special hydrotherapy seats which are designed according to ergonomic engineering, different kinds of jets in the seat to help to achieve body therapy. Adjust the massage pressure through adjusting the massage, water diverter and air regulator.
- Air blower therapy function:** Turn on the air blower, special designed air jets will blow a lots of air bubble to provide you bubble therapy and fun.
- Heating function:** SPA comes with heater, once the user set the temperature, the heater will start to maintain the temperature to the set temperature and ensure the spa is available for all season.
- Filter and circulation function:** SPA comes with Filter which can clean the impurities inside efficiently, meanwhile, the system will run the Filter Cycle programming automatically, to kill the bacteria via the ozone released by the ozone generator.
- Aromatherapy function:** SPA comes with Aromatherapy canister, put essence into it, the perfume mix with the water through special plumbing to make you feel comfortable.
- Lighting:** SPA comes with waterproof underwater light, to switch the colour and mode via the control panel, the underwater light not only provides the lighting function but also make you feel romantic.
- Multimedia:** You may mount the optional DVD/TV/IPOP to the SPA, allow you enjoy the video and audio while exercising in the swim SPA or massaging in the SPA.
- Swimming (swim SPA):** Running the swim jet to gain strong surf, you can enjoy the swimming with stainless steel handrail without a big room.
- Surf sport (swim SPA):** Adjust the jetting direction of swim jet to create a vortex, enjoy surf in your swim spa.
- Exercising (swim SPA):** With the help of exercise band and swimming harness, you are able to do all kinds of exercise in swim spa.

Important declaration: All the functions mentioned above are general introduction to our Spas products, the SPA you purchase may be difference, please check it clearly before purchasing. The manufacturer reserves the right to modify and improve the products when necessary without prior notice and without entering into any obligation.

IMPORTANT INSTRUCTIONS

It is essential to familiarize yourself with general spa pool safety and water treatment procedures. Please make sure to familiarize below contents:

- **Drainage requirement:** Ensure that the spa is not in a low or floodable position; as this could cause electrical equipment shortage or be dangerous to spa users.
- **Risk of electric shock:** As with all electrical appliances there is a risk of electrocution. The engine room within the cabinet, houses the control unit that operates the spa. The door enclosing the unit should always remain shut. If water happens to enter the engine room, turn the spa off at the power outlet and make sure all the components are dry before attempting to power the spa back up.
- **Temperature:** Keep your spa water temperature no higher than 40°C. Higher water temperatures can cause strain on the cardiovascular system. If the water temperature is higher than 40°C, get out of the spa and contact the dealer as soon as possible. It is recommended that the water temperature be no higher than body temperature i.e. 37.5°C.
- **Medical conditions**
 - People with diabetes, high blood pressure, heart disease or other cardiovascular conditions should consult their physician before using a SPA.
 - To reduce the risk of contaminating spa water and minimize health risks, shower with soap and water prior to using the spa.
 - People with open sores or any type of infection should not use the spa.
 - Hot water is an ideal environment for spreading infection, especially if sanitizer levels are not properly maintained.
 - Women who are pregnant should consult their physician before using a spa.
- **Soak and cool time:** Limit spa use to no more than 15-20 minutes at a time. Some spa pools are equipped with a cooling seat. When you feel you are getting too hot, sit on the cooling seat and allow your body to cool. When you feel comfortable you may submerge yourself back into the spa pool. Sitting in the spa with your heart above the water level will dramatically decrease the time it takes to cool down. Hyperthermia may be fatal. Do not expose your body to prolonged exposure in water above normal body temperature.
- **Alcohol use and medication:** The consumption of alcohol in and around the spa pool is a hazardous practice. Never use glass drinking vessels near the spa pool. Alcohol can cause drowsiness and lead to drowning. Any person taking medication should consult their physician before entering the spa pool.
- **Child safety:** Children should not be permitted to use the spa without adult supervision.
- **Preventing slips:** Always take care when entering and exiting a spa due to slippery, uneven surfaces. Handrails and non-slip surfaces will help to minimize the risk of slipping and falling. In some cases steps may be needed to make entering the spa easier.

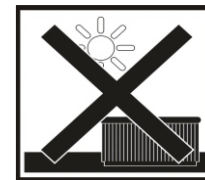
- **Electrical appliances:** Never have any electrical devices within 2 meters of the spa.
- **Weather conditions:** Do not operate or soak in a SPA during severe weather conditions i.e. thunderstorms, cyclones or electrical storms.
- **Ventilation:** If the SPA pool is not sufficiently ventilated some people may experience throat irritations. Make sure that the SPA pool is properly ventilated if you are installing it in an enclosed area.
- **Chemicals:** SPA chemicals are necessary to control bacteria, prevent infection and maximize the life of your SPA and its equipment. However, in concentrated form these chemicals, like other household chemicals, can be hazardous. Always handle and use them with care. Refer to the product's label for safety and handling information. A more in-depth explanation on how to use chemicals in your SPA can be found in the Chemical Management section.

SPA INSTALLATION

Please always find a professional to install your SPA, The manufacturer shall not be responsible for any damage caused by an improper installation or an installation performed by non-qualified personnel.

Positioning and location of the SPA

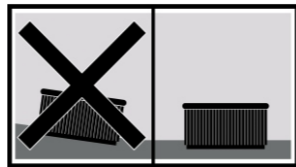
- Your spa needs to be positioned so that the spa's equipment is easily accessible. The equipment is located (in most cases) at the front of the SPA and will need to be accessible for service and power connection. It is recommended that you have access to all sides allowing at least 1/2 a metre access around all 4 sides of your SPA for future access if required. It will be the owner's responsibility to make sure this is completed prior to the service being carried out. All portable SPA equipment must be ventilated. Do not obstruct any vents in the cabinet.
- It is recommended to place the SPA away from trees, as falling leaves may block the filter.



Important note: DO NOT leave your SPA in direct sunlight for extended periods of time. Doing so may void your warranty. The SPA has closed cell insulation over the shell and pipe work. If left exposed to direct sunlight the surface temperature can build up to 200 °C causing damage to your SPA. It is suggested that you not only have the hard cover over your SPA while not in use but also have the SPA in an area which is sheltered from extreme and harsh weather conditions. Leaving the SPA uncovered and exposed may void your warranty on your SPA and its accessories.

Location requirement

- Before installing, it is better to ask a professional to check the spa position.
- Avoid placing the SPA where water could flood into the electrical equipment compartment, and also protect the unit from direct contact with very damp areas.
- Position the SPA horizontally, placing the whole base of the unit on a smooth, flat and level surface, capable of supporting the weight when used (full of water, plus the weight of the bathers, required 1000KG weight capability).
- The SPA cannot be placed on a curved, soft, sandy surface or blocks.



Electric installation

IMPORTANT ATTENTION

- The electrical supply to your new spa will require a dedicated circuit with no other appliances or sockets sharing the power. Electrical burn out due to incorrect amperage WILL NOT be covered by warranty. Ask for qualified electrician for electrical connection.
- Ensure your new SPA is safely earthing. Ensure the main power supply has installed high sensitive leakage protectors. Recommend 30mA leakage protectors.
- Please select suitable wiring:

Rate power(KW)	2.1	2.5	2.8	3.2	3.5	4.4	5.3	6.2	7.0	7.9	8.8
Product distance	Cable core area(square mm)										
6-11 meters	2.5	2.5	2.5	2.5	4	4	6	10	10	10	10
11-15 meters	2.5	2.5	4	4	4	6	6	10	10	10	10
15-20 meters	4	4	4	6	6	6	10	10	10	16	16

- Please refer the control system instruction manual before electrical installation.

SPA MAINTENANCE

Owning a spa is fun, relaxing and therapeutic, but more important we must look after our investment to keep it healthy and economical, thus avoiding unnecessary premature repair costs. Detailed below is a simple step-by-step procedure to follow.

Filling your SPA

- Before filling your spa, please check and tighten all the live connectors, they may go loose during transportation.
- Please check and make sure all the check valves are all in the open position.
- Check that the drainage valve is shut off.
- Check that all jets are in the open position. Turn clockwise to turn your jets on.
- Fill your SPA with water. Fill the water through the filter in order to prevent air block in the pumps. Fill the water till reach the required water level.

Note: To avoid any damage to the components, DO NOT fill hot water over over 40°C into your SPA.

Draining your SPA

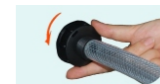
- If you use your SPA say once or twice a week, the need to drain your spa will be less frequent than a SPA owner who uses their SPA three or more times a week. Therefore, it would be recommended that a SPA be drained at least every 3 months.
- Your drainage valve is positioned at the front of the bottom base. Details for drainage are as follows:



1. Take off the cover of the drainage valve by anti-clockwise



2. Connect your hose with the drainage valve in which diameter is 3/4" or 19.04 mm



3. Pull out and screw until stop

Note: Ensure the power is shut off before draining. Equipment damage caused by dry running will not be covered under warranty.

SPA control panel instruction

The spa control panel instruction please refer to the User's Manual of the control system and the Quick Operation Guidance.

Jet instruction

Jets are the main parts in which massage come to affect. You can adjust the water flow through rotating the jet face.

- Turn the jet cover clockwise about 1/4, the jets are turned on.
- Turn the jet cover anti-clockwise about 1/4, the jets are turned off.



Note: Some jets and the air jets are unadjustable. Don't rotate these jets with force. It may cause damages to the jets.

Air controls instruction

Air controls affect the pressure of your jets by adding air. You may have more than one air control on your spa, each of which will be associated to a certain group of jets. By opening an air control when the pump is on air will be drawn into the water flow.

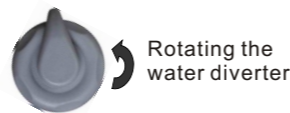
- When the air control is turned clockwise, it will decrease the power of the massage jets.
- When it is turned anti-clockwise, it will increase the power of the massage jets.

Note: For better heating efficiency, please turn the air controls off. The air blower may cooling down the spa water temperature.



Water diverter instruction

The water diverter is the parts which adjust the massage power. Rotating the water diverter, you will adjust the massage power of different seats.



Aromatherapy canister instruction (Option)

- The Aromatherapy canister is the part that brings aromatherapy. The aromatherapy canister is composed by aromatherapy canister cover, canister and canister holder. Turn the canister anti-clockwise to open and increase the aromatherapy. Turn the canister clockwise to decrease the aromatherapy.
- Replace the lasting scents essential oil in 2 or 3 months time accordingly. Turn the aromatherapy cover anti-clockwise, turn the canister anti-clockwise. Check if it is any lasting scents essential oil left. Replace it when it is finished. You can contact the local dealer to buy a new one for replacement.



Aromatherapy canister knob

Turn aromatherapy canister knob, open or close the aromatherapy canister



Aromatherapy canister cover

Turn the canister cover anti-clockwise to open



Aromatherapy canister holder

Turn the canister anti-clockwise to open

Note: For better and longer aromatherapy, remember to turn the aromatherapy canister off when the spa is not in use.

The water flow control is the special parts to control the water flow of the options, like waterfall and fountain. Rotating the water flow control will turn on, turn off and adjust the water flow.

Water flow control instruction (Option)

Note: For better heating efficiency, turn the water flow controls off when the spa is not in use.



Multimedia system instruction (Option)

The spa may obligate to connect with DVD player, CD player, Ipod ect. Pop up speakers and multimedia system. Please check before using which multimedia system you have for your spa.

Note: Pull off the cover of the DVD player after using. For details, please refer to the user's manual of DVD player.

SPA WATER MANAGEMENT & MAINTENANCE

- Please note that these instructions are just a guide to maintain the spa's water quality. Before any actions, please consult your local SPA specialist for proper amount of sanitizer use, and take proper action depending on the capacity of the SPA.
- You should never use pool grade chemicals in your spa. Any damage to equipment caused by using pool grade chemicals or other improper chemicals will not be covered under warranty.
- Please have the water tested professionally at least once a month, and it's recommended that the water is weekly tested by the end user. When adding chemicals to the spa, please leave it to mix in for 20-30 minutes. Test the water after the chemicals are sufficiently mixed into the water.

The effect and adjustment of pH

- Low pH (below 7.2) causes sanitizers to dissipate more rapidly, increases corrosion of surfaces and equipment, and may make water irritating to spa users. If pH is high (above 7.6) chlorinating sanitizers are less effective, surfaces and equipment can scale, water may cloud and shorter filters runs may occur.

ATTENTION! The pH level measures the acidity and alkalinity: Values above 7 are alkali and below 7, are acid. A PH index of between 7.2 and 7.6 is recommended.

WARNING: Please make sure that the correct PH level is maintained, any damage caused by an inadequate PH level is not covered by your Spa guarantee.

PH adjustment

- Check the pH of the Spa water daily using the pH tester. (not supplied)
- If the pH is above the above-mentioned indexes, do not enter the SPA temporarily. Wait for two hours and re-do the pH test.
- If the pH is below the above-mentioned indexes, let the pumps prime. Wait for two hours and re-do the pH test.
- If the proper pH level can not be maintained by the above instructions, please add appropriate amount of acidity-alkalinity balance reagent into the water, uncover the spa cover, leave it mix in for 20 minutes, then re-do the pH test;

Disinfection of the water

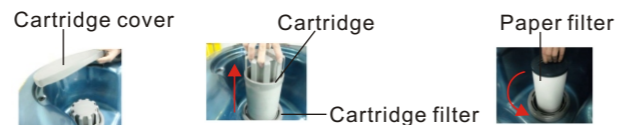
Disinfection of the water is of utmost importance in order to destroy algae, bacteria and organisms that could develop in the water. However, excessive disinfection could cause skin and eye irritation.

- **Bromide tablets:** are a suitable disinfectant for the Spa water. This product is placed in the pre-filter and gradually dissolves. Check the residual bromide level daily using the Br analyser set. The recommended level of residual bromide is between 2.2 and 3.3 ppm.
- **Disinfection with OZONE:** Ozone, O₃, is an oxidizing chemical compound, which is very effective for disinfecting water. The main advantage of ozone is that it leaves no chemical trace and is odorless. Generally, the spa is equipped with 1~2 ozone generator, produce ozone ions from oxygen in the atmosphere. This is an automatic process and the resulting product is injected through the jets of the water. Please refer to the part " controller's function instruction". It is recommended that the ozone Disinfection is operated twice a day, and the duration is maintained within 1~2 hours, thus the ideal disinfection effect can be obtained and the life-span of the ozone generator can extended.

Filter remove and install

Remove the cartridge and filter

- Open the cartridge cover on up side;
- Take off the filter cover, and turn counter-clockwise to take off the paper filter.
- Go opposite to install the cartridge filter.



Remove the double front access filters

- Pull up the front panel, pull the screener transverse out.
- Go counter-clockwise to remove the paper filter.
- Go opposite to install the double front access filters.



Remove big size front access stopper filter

- Take off the top cover.
- Go counter-clockwise to remove the paper filter.
- Go opposite to install the front access stopper filter.



■ When your SPA is not in use

If you are going away for a period longer than 2 months, it is recommended that you turn your spa off and empty it. It is important to remember to leave the cover on even while empty to protect the shell. If you are going away for a few days or weeks, do not turn your spa off completely. Turn the temperature down to 15 degree, so that the filtration cycles are still functioning but the spa doesn't heat.

- 3-5 days
Adjust the PH and water treating (for details please check the water maintenance) cover the spa cover, adjust the PH and water treating when you reuse the spa;
- 5-14 days
Setting the lowest temperature or sleep pattern. Adjust the PH and water treating (for details please check the water maintenance) cover the spa cover, adjust the PH and water treating when you reuse the spa;
- More than 15 days
Turn off the power, open the drain valve and drain the spa clean, take off the filter, keep the spa dry and cover the spa cover.

TROUBLES SHOOTING

Description Of Trouble	Analysis	Solution
The error message appear on the LCD display. the spa stop working	<ul style="list-style-type: none"> • Control system will have digital diagnostics function which will stop working if have something wrong in spa, and it will restart when the troubleshooting solved. 	<ul style="list-style-type: none"> • Please check the error message in the control system manual, and then contact the local dealer to do the maintainece.
SPA can't start in any model	<ul style="list-style-type: none"> • Power off • Control panel is locked • Electric control failure (display showed error message) 	<ul style="list-style-type: none"> • Check the power switch or contactor if turned on • Check whether the control panel lock • Check the fault code in control manual, then contact dealer do the maintenance
SPA open automatically	<ul style="list-style-type: none"> • Filtration feature is running • Heating function is running • Antifreeze feature is running 	<ul style="list-style-type: none"> • Just is the automatically function for the system, without maintenance, the system will automatically stop running when the function is over.
The water pump turn off automatically when using the SPA	<ul style="list-style-type: none"> • The pump running time is more than the system default maximum running time • The pump motor is overheat protection 	<ul style="list-style-type: none"> • Reprress pump button to restart the pump • Stop running pump more than 1 hour until cool and then start the pump
The spa turn on after fill full the water, then the water pumps are also on, but no water come out from the jets	<ul style="list-style-type: none"> • The jets are closed • Water pump suck the air 	<ul style="list-style-type: none"> • Check whether the jets is closed, if not, open it • Repeated several times to start water pumps, if still not working, open the union on the water pump to let the air release, and then screw tightly. Meanwhile please fill the wate through from filter so that could prevent the inside of water pump suck air
SPA slow heating	<ul style="list-style-type: none"> • Set the temperature lower • Fifter cartridge dirty • There no cover cover on the SPA make the heat loss • The jet which connect to the circulating pump is closed • Heater broken 	<ul style="list-style-type: none"> • Re-set the temperature • Cleaning or replacement of filter • Put the cover on spa • Open the jets • Contact the local dealer to do the maintenance
The massage power of the jets is small	<ul style="list-style-type: none"> • Jets is not fully opened • Jets is clogged • Air valve turn off • Water valve closed make the jets wont come our the water • Water pump cont rol valve is not fully opened 	<ul style="list-style-type: none"> • Open the jets • Let the cover of jets counter-clockwise rotation in the end and then forced North Korea Counterclockwise rotation, can spiral jets out, then check whether there are foreign bodies inside the jets • Open the air valve switch • Rotary valves, regulating the water jets • Check water pump's valve if fully opened
The jet spraying water sometimes big, sometimes small	<ul style="list-style-type: none"> • Suctions or filter are clogged • Water pump control valve is not fully opened 	<ul style="list-style-type: none"> • Check whether if the suction or filter have foreign bodies inside and remove it • Check water pump 's valve if both are fully opened

■ The application of other special chemical products

Besides the pH adjustment and the above-mentioned disinfection ways, there are some cleaning products which can be used in spa water;

- ANTI-CALCAREOUS: it can be used to prevent/reduce precipitation of calcium salts (scale), especially in hard water areas. Use it once a week and whenever the water is renewed.
- SPA ALGAECIDE: Prevent algae from growing in the water, use it once a week and whenever the water is renewed.
- ANTIFOAM: Prevent precipitation of calcium salts (scale), use it once a week and whenever the water is renewed.

WARNING!

Add the exact amounts to the water, as specified. Do not mix products, to avoid possible reactions.

Do not smoke while handling these products - they may be flammable.

Do not add chemical products to the water if there is someone in the spa.

Keep containers tightly closed in dry, well-ventilated places, and keep these products away from children.

Do not inhale chemical products, and take care not to let them come into contact with the eyes, nose or mouth. Wash hands after use.

Follow the emergency instructions on the product label in the event of an accident or ingestion.

SPA CLEAN AND MAINTENANCE

Owning a spa is fun, relaxing and therapeutic, but more importantly we must look after our investment to keep it healthy and economical, thus avoiding unnecessary premature repair costs. Detailed below is a simple step by step procedure to follow.

■ SPA surface clean and maintenance

The spa surface is made of high-gloss acrylic, we must keep it clean, we suggest that clean the spa outside surface once a week and clean the whole spa after drain. Details steps as below:

- Clean the dirt with wet towel, we can use the neutral detergent and soft towel, can not use the detergent which with ketone or chlorine water.
- If the surface have some light scratch, please polish it with 2000# sand paper and make up it with toothpaste, re-polish it with soft towel.
- Please do not clean the spa surface with any chemical solution/ kernel or crude tools; do not scratch the spa surface with hard material or knife.
- Please do not clean the spa surface with nail polish, nail polish remover, dry detergent, acetone, paint remover ect. It will damage the surface.
- No cigarette end or over 70°C heat source touch your SPA.

■ Control panel maintenance

- Please do not touch the control panel with the hard things to avoid scratch.
- Please avoid the direct sunshine on the control panel.
- Please keep the control panel dryness when the spa is not in use.

■ Pillow mainerance

- Clean the pillow with neutral detergent;
- The exceed chloride detergent and ozone will made the pillow fading, please take off the pillow after use the SPA, please make it carefully, it is not in guaranty.

■ SPA cover maintenance

- Clean the cover with soap water, please make sure do not let the soap water go inside the spa
- Please do not catch or pull the link in the middle of the cover, it is easy to break;
- Please do not seating, lie and jump on the cover, damage it may cause is not covered under guaranty.

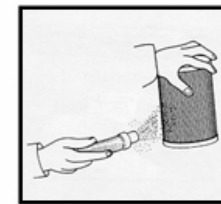
Note: Please cover the spa cover after use or clean . Leaving the spa uncovered and exposed may void your warranty on your spa and its accessories.

■ Filter maintenance

You should clean your filters regularly. Once a week you should remove your filters and hose any debris out of them with a high pressure hose. Once a month you should soak your filters in a cartridge filter cleaning solution and then hose off with a high pressure hose.

Filter cleaning

- Turn off the power;
- Remove the cartridge, please read the filter remove instruction before doing so.
- Take off with filter from the cartridge on counter-clockwise.
- Clean the cartridge with water until not any leftover.
- Spray the filter with water, from up to down At an angle of 45° (Attached the photos in right side).
- Install the filter and cartridge after clean.
- Turn on the power.



Note: Please contact your supplier to change the filter after continue use 3 months.

Warning: When you remove your filters, ALWAYS ensure that the power to your spa is off before doing so. If you leave your power on and anything is dram into your pump or heater, causing either to fail the fault will not be covered under warranty.

THE LIMITED WARRANTY AND AFTER SALES SERVICE

Warranty performance and coverage

- Our company provide is limited warranty on the product quality responsibility. The limited warranties do not include any other expense may involved.
- Under the warranty, due to fault the quality of the product itself, please let the customers fill the (warranty card) and then contact the local dealer to do the maintenance or replace the part.
- The distributor or the end user shall provide the necessary information including serial No., model No., Failure report and pictures to the factory in details when claim a warranty.

The following items are specifically excluded from any warranty coverage:

- Any damages resulting from improper use or maintenance not according to user's manual.
- Damaged caused by any anthropic factor.
- Any amendment to the product without manufactory's authorization.
- Damage or discoloration to the shell surface due to corrosive or improper cleaning agent.
- Damage resulting from improper transportation or storage.
- Damage due to acts of God was not covered under warranty.
- Natural color fading.

Maintenance policy

- Our company provides the product with lifetime service. After warranty limited period ends, we only charge the basic service fee when need further maintenance or service. The charge will be based on the materials and the transportation cost.
- Consumed parts such as filter cartridges, filter lid, SPA pillows and cover locks, are not included in this warranty, unless the parts itself has defects in materials and workmanship problem.

- Our company reserves the right to revise of the above conditions and terms
- All the replaced parts belong to the property of our company.

Service promise:

Response to any complaints within two working days. And visit the customers regularly for feedbacks, to ensure continually enhance the customers satisfaction.

Limited warranty:

Item No.	Warranty Item	Warranty Period	Content	Approach	Remark
1	Product structure	5 years	Shell crack	Provide repair kits or replaceable parts.	
			Structural frame failure	Provide a free structure.	
2	Shell surface	2 years	Product defects itself problems such as blisters, peeling or delaminating	Provide repair kits or a new shell to replace.	
3	Jets	2 years	Jets defect or failure	Provide replaceable jets free of charge.	
4	Control system	2 years	System failure irreversible	Provide replaceable control system free of charge.	
5	Other parts and fittings	2 years	Damage, broken-down or failure	Provide free parts	Filter is not covered

Note: The limited warranty is from the manufacturers production date of substantial completion.

Special declaration

Production manufacturer reserved the right of final explanation.

Warranty card

Maintenance record:

Products name	
SPA Model name	
Serial No	
Purchase date	
Distributor	
Distributor (stamp)	

Maintenance date	Description of trouble	Maintenance place	Maintenance result