

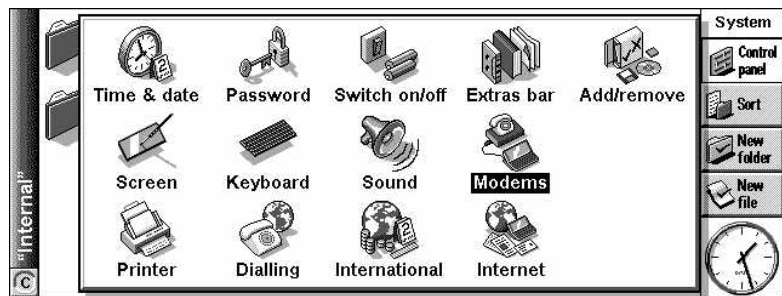
Setting up Message Suite

This document details the steps necessary to set up Message Suite on your Psion Series 5. It assumes that you have already installed Message Suite onto your Psion from the PsiWin CD ROM. In particular, this document covers setting up your modem, entering your Internet Service Provider (ISP) and email settings and setting up faxing.

This document shows Message Suite version 1.52. For more information on earlier versions of Message Suite see the section on earlier versions towards the end of this document.

The Control panel

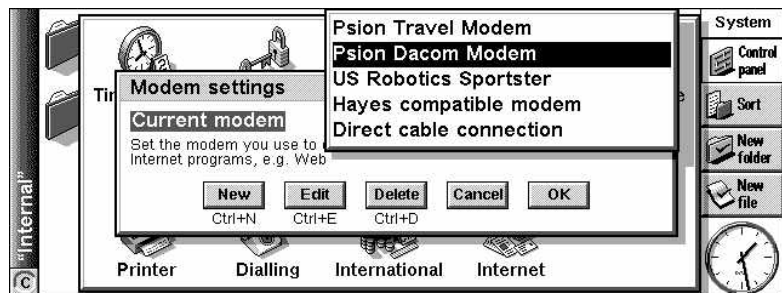
To view the Control Panel, go to the System screen and tap the **Control panel** button on the toolbar, or press **Ctrl + S**. The icons relevant to this document are **Modems** and **Internet**. There are also changes to **Dialling** which can affect Message Suite.



Modem information

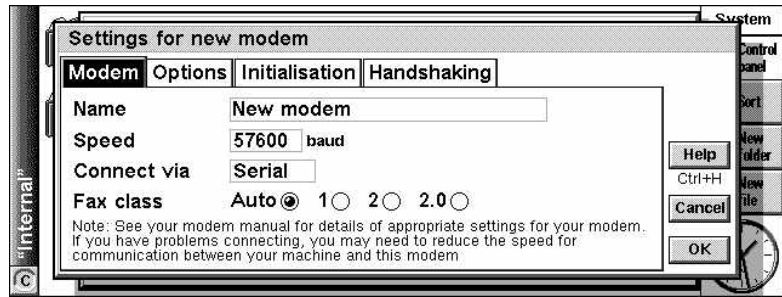
Before you connect for the first time, you will need to enter some information about your modem. To enter this information, you must open the Control panel and double-tap the **Modems** icon.

1. In the first instance, you will be asked to select the current modem. If you have a modem which is already on the list, simply select it and tap the **OK** button.
2. If you have a modem that is not already listed, tap on the **New** button to enter your modem's settings.



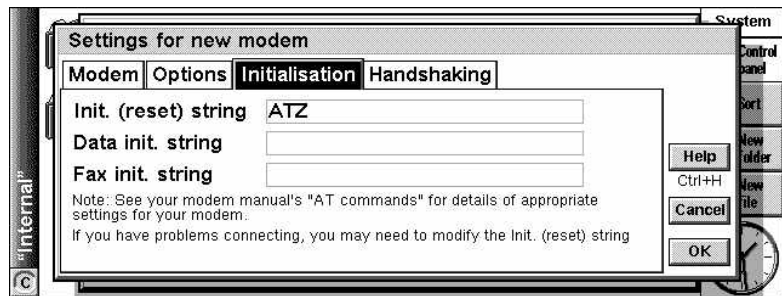
You should be able to obtain all the information you need to set up your modem from its user manual.

- On the **Modem** page, tap the **Name** line, and type in a name for the modem. Set the **Speed** line to the recommended speed (baud rate) for your modem and set the **Connect via** line to **Serial** or **Infrared** as appropriate. The **Fax class** line should normally be set to **Auto**.

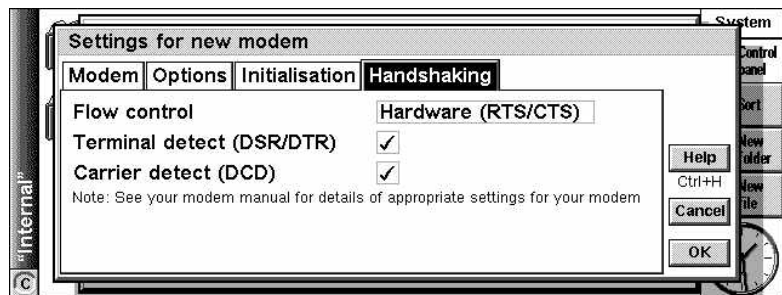


- You can change settings on the **Options** page to control the modem's loudspeaker. It is safe to keep the default values.

- On the **Initialisation** page, tap the **Init. (reset) string** line and enter the initialisation string for your modem recommended in your modem's documentation. The default **ATZ** should work with most modems. Do the same for the **Data init. string** and **Fax init. string** lines if required. Again, the default, blank, settings should work with most modems.



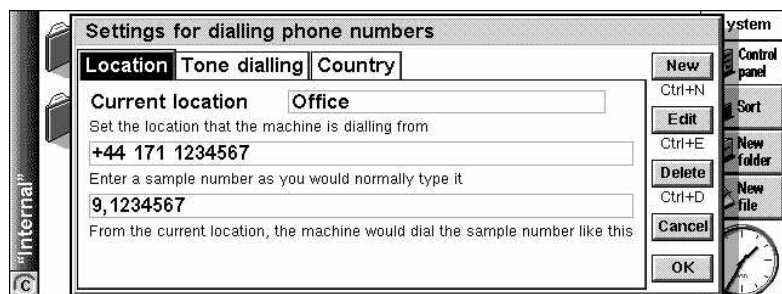
- On the **Handshaking** page, you should use the settings recommended by your modem's documentation. Tap the **Flow control** line and use **?** or **?** to select the type of flow control. Tick or untick the **Terminal detect (DSR/DTR)** and **Carrier detect (DCD)** as appropriate. Again, the default settings on this page have been chosen to work with most modems.



- Once you have finished entering the settings, Tap the **OK** button to return to the **Modem settings** dialog and tap the **OK** button again to select the new modem.

Dialling information

Double-tap the **Dialling** icon in the Control panel. You will need to select your current **Location**. Typically, there will be three locations to choose from, though you may create more. Each location specifies the way a phone number should be dialled.



The **Office** location, for example, assumes there will be a dial-out code of 9. Make sure you have selected the appropriate location and click the **OK** button.

Setting up to connect to the Internet

Required information

To send and receive faxes from your Series 5mx, the above settings are all that are required. Before you can use email or the web browser, there are several pieces of information that you will need to obtain from your ISP. The examples in this table show details for FreeServe. Your details will be different.

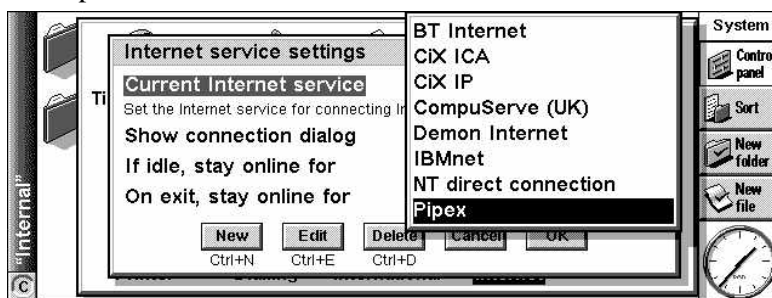
Information required	Example	Your account
Account username	chris@psicomp.freemove .co.uk	
Account password	*****	
IP Address, if you have been given a static IP address for your account.	111.222.33.44	
Primary DNS Server address (if needed)	123.255.78.90	
Secondary DNS Server address (if needed)	123.255.78.92	
Incoming (POP3) mail server	pop.freemove.net	
Outgoing (SMTP) mail server	smtp.freemove.net	
Mailbox login/username (if different from account username)	chris@psicomp.freemove .co.uk	
Email address	chris@psicomp.freemove .co.uk	
Mailbox password (if different from account username)	*****	

It is possible to install various ISP templates from the PsiWin CD ROM. If settings exist for your ISP it is best to use these as a starting point, since much of the information will be entered for you.

Entering account details

1. Open the **Control panel** and double-tap the **Internet** icon.

2. If you have installed the ISP templates for your country from the PsiWin CD ROM, tap the **Current Internet service** line and press the **Tab** key. You should see a list of available ISP templates. If your ISP is listed, select it, tap the **Edit** button and proceed to Step 3.



If your ISP is not listed, or you have not installed the ISP templates for your country from the PsiWin CD ROM, tap the **New** button, ensure that the **Based upon** line is set to **Standard settings** and tap the **OK** button.



Note: The following steps assume that you are entering the settings from scratch. If you are using an ISP template, most of the settings will already have been entered.

- On the **Service** page, tap the **Name** line and type in a name for your Internet service (this can be anything you want). If you are using a dial-up connection, make sure you have selected **Dial-up** on the **Connection type** line. Ensure that **Use "smart" dialling** is

ticked, then enter your ISP's phone number on the **Standard dial-up number** line. Note that as you have chosen to **Use "smart" dialling** you should strip the leading **0** from the area code.

- On the **Account** page, remove the tick from the box next to **Manual login**. Tap the **Username** line and enter your account username, then do the same for the **Password** line. Note that these are your account settings, *not* your email settings (these may be different).

- On the **Addresses** page you can enter your IP address and DNS addresses if required. To Enter your IP address, untick the box next to **Get IP address from server** then tap the **IP address** line and type in your IP address. Primary and secondary DNS addresses can be entered in the same way.

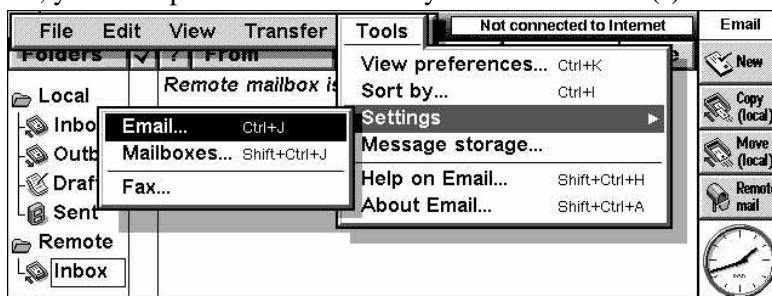
- On the **Login** page you can enter a login script for your ISP. Most ISPs do not need a login script. If yours does, consult the Setting up for the Internet document on the PsiWin CD ROM for details on Psion's scripting language. Also check the Psion web site (www.pSION.com) and your ISP's web site for a login script.
- The **Advanced** page allows you to **Enable PPP extensions** and **Allow plain text authentication**. These will not normally need to be changed.

Note: If you have more than one ISP it is possible to set up multiple Internet services. Just follow the above procedure as many times as you need.

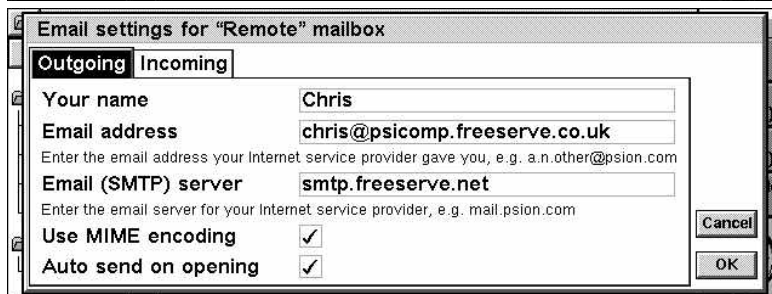
Entering email details

If you wish to use the email application, you must provide details about your email account(s).

1. Open the Email application and select **Settings**, then **Email** from the **Tools** menu.



2. On the **Outgoing** page, tap **Your name** and type in a name (this can be anything you want). Repeat this for the **Email address** line and select whether to set this as your default account. Then, enter the name of your **Email (SMTP) server**. You can also



choose whether or not to automatically send emails on opening the Email program.

3. On the **Incoming** page, enter your **POP3 server**, your **Mailbox login** and your **Mailbox password** (these may be different from your account login and password).



4. Click the **OK** button to confirm these settings.

Note: If you have more than one email account it is possible to set up multiple email accounts in the Email program. Select **Settings**, then **Mailboxes** from the **File** menu to create a new mailbox and follow the above procedure to enter its settings.

Setting up faxing

There is very little that needs setting up for faxing. In the Email program, select **Settings**, then **Fax** from the **Tools** menu.

- On the **User** page, enter the number that you receive faxes on (this could be a fax machine or your mobile phone's fax number, for example) and your name as you would like them to appear at the top of your faxes. You can also set your preferred fax resolution and whether you want to see a connection dialog.
- On the **Modem** page, you can set the maximum and minimum fax speeds and the faxback delay. You will not normally need to alter these settings.

Earlier versions

It is recommended that you upgrade to the latest version of Message Suite (version 1.52). Older versions will look different from the version shown here. They also lack some of the functionality of version 1.52. Versions older than 1.50 did not support email attachments or multiple mailboxes and installed a **Network** icon in the Control panel, rather than the Internet icon. The dialogs shown above would also be different, but all the information required is the same.