

# ADPRO<sup>®</sup>

## PRO E-Series

PIR PIDS — Passive Infrared  
Perimeter Intrusion Detection  
Systems

# Questions and Answers

April, 2014

Doc. 26726\_03

**ADPRO<sup>®</sup>**  
by  **xtralis<sup>®</sup>**



## Disclaimer

The contents of this document is provided on an "as is" basis. No representation or warranty (either express or implied) is made as to the completeness, accuracy or reliability of the contents of this document. The manufacturer reserves the right to change designs or specifications without obligation and without further notice. Except as otherwise provided, all warranties, express or implied, including without limitation any implied warranties of merchantability and fitness for a particular purpose are expressly excluded.

## Intellectual Property and Copyright

This document includes registered and unregistered trademarks. All trademarks displayed are the trademarks of their respective owners. Your use of this document does not constitute or create a licence or any other right to use the name and/or trademark and/or label. This document is subject to copyright owned by Xtralis. You agree not to copy, communicate to the public, adapt, distribute, transfer, sell, modify or publish any contents of this document without the express prior written consent of Xtralis.

## General Warning

This product must only be installed, configured and used strictly in accordance with the General Terms and Conditions, User Manual and product documents available from Xtralis. All proper health and safety precautions must be taken during the installation, commissioning and maintenance of the product. The system should not be connected to a power source until all the components have been installed. Proper safety precautions must be taken during tests and maintenance of the products when these are still connected to the power source. Failure to do so or tampering with the electronics inside the products can result in an electric shock causing injury or death and may cause equipment damage. Xtralis is not responsible and cannot be held accountable for any liability that may arise due to improper use of the equipment and/or failure to take proper precautions. Only persons trained through an Xtralis accredited training course can install, test and maintain the system.

## Liability

You agree to install, configure and use the products strictly in accordance with the User Manual and product documents available from Xtralis.

Xtralis is not liable to you or any other person for incidental, indirect, or consequential loss, expense or damages of any kind including without limitation, loss of business, loss of profits or loss of data arising out of your use of the products. Without limiting this general disclaimer the following specific warnings and disclaimers also apply:

### Fitness for Purpose

You agree that you have been provided with a reasonable opportunity to appraise the products and have made your own independent assessment of the fitness or suitability of the products for your purpose. You acknowledge that you have not relied on any oral or written information, representation or advice given by or on behalf of Xtralis or its representatives.

### Total Liability

To the fullest extent permitted by law that any limitation or exclusion cannot apply, the total liability of Xtralis in relation to the products is limited to:

- (i) in the case of services, the cost of having the services supplied again; or
- (ii) in the case of goods, the lowest cost of replacing the goods, acquiring equivalent goods or having the goods repaired.

### Indemnification

You agree to fully indemnify and hold Xtralis harmless for any claim, cost, demand or damage (including legal costs on a full indemnity basis) incurred or which may be incurred arising from your use of the products.

### Miscellaneous

If any provision outlined above is found to be invalid or unenforceable by a court of law, such invalidity or unenforceability will not affect the remainder which will continue in full force and effect. All rights not expressly granted are reserved.

## Document Conventions

The following typographic conventions are used in this document.

Convention	Description
<b>Bold</b>	Used to denote: emphasis Used for names of menus, menu options, toolbar buttons
<i>Italics</i>	Used to denote: references to other parts of this document or other documents. Used for the result of an action

The following abbreviations maybe used in this document.

Abbreviation	Description
AA	Aperture Angle
CZ	Creep Zone
DR	Detection Rate
FAR	False Alarm Rate
PID	Perimeter Intrusion Detector
PIDS	Perimeter Intrusion Detection System
PIR	Passive Infrared

**Tradename statement**

ADPRO is a registered trademark of Xtralis Pty Ltd.

**Contact Us**

**UK and Europe** +44 1442 242 330 **D-A-CH** +49 431 23284 1 **The Americas** +1 781 740 2223

**Middle East** +962 6 588 5622 **Asia** +86 21 5240 0077 **Australia and New Zealand** +61 3 9936 7000

[www.xtralis.com](http://www.xtralis.com)

## Contents

1	ADPRO PRO E-Passive Infrared Perimeter Intrusion Detector .....	2
2	Questions and Answers .....	3
2.1	What is new compared to existing product range?.....	3
2.2	What does “360PROtect™ – Near Surrounding Area Surveillance” mean?.....	3
2.3	Do I need an additional pole and an additional detector to cover the creep zone of a detector in the corner of a perimeter? .....	3
2.4	Is PRO-CMB-W cable managed bracket the same as the integrated cable management of ADPRO PRO E-detectors? .....	4
2.5	Do I need a pole mount adaptor? .....	4
2.6	What is the recommended pole diameter? .....	4
2.7	Do I need a mounting plate, when mounted e.g. on a rough plaster? .....	4
2.8	Which batteries can be used for wireless operation? .....	4
2.9	What is the maximum input voltage coming from renewable energy sources? .....	4
2.10	Is it possible to use iCommission for the existing ADPRO PRO-Series?.....	4
2.11	Can I use ADPRO PRO E-Tool software for the existing product range of ADPRO PRO-series? .....	4
2.12	Does the new ADPRO PRO E-detector monitor tamper attacks by panning the housing? .....	5
2.13	Are there any changes in the monitored ranges? .....	5
2.14	Is RS-485 and ADPRO PRO-communication protocol still available and backward compatible?.....	5
2.15	Is the ADPRO PRO-250H still available? .....	5
2.16	Are the ADPRO PRO-series “intelligent” detectors still available?.....	5
2.17	Are the ADPRO PRO-series “intrinsically safe” detectors still available? .....	5
2.18	Will all other ADPRO PRO-series detectors be out-phased? .....	5
2.19	Are there any published standards for external perimeter security systems? .....	5
3	Product Overview.....	6
	Notes: .....	7



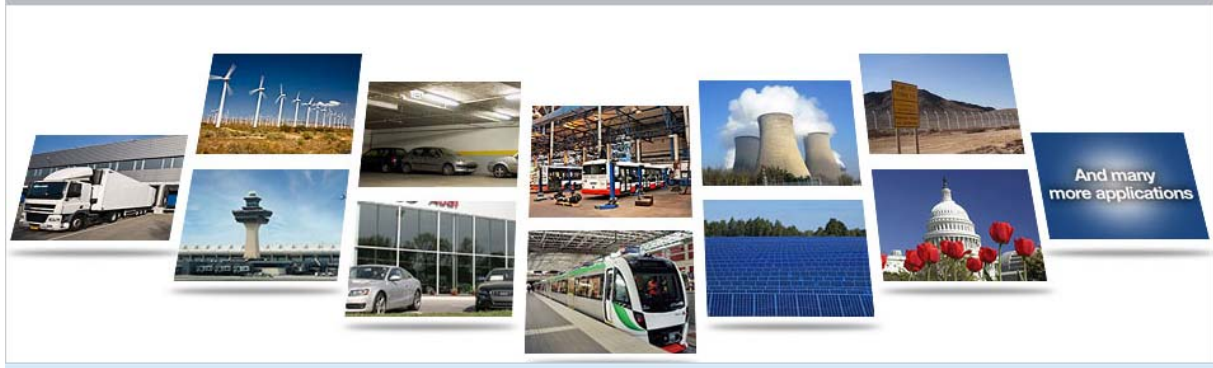
Introducing the  
**ADPRO<sup>®</sup>  
PRO<sup>®</sup>**   
Passive Infrared  
(PIR) Detector

Protecting large perimeter applications  
with superior performance.





**ADPRO<sup>®</sup>**  **verywhere**  
A solution for all applications



# 1 ADPRO PRO E-Passive Infrared Perimeter Intrusion Detector





## 2 Questions and Answers

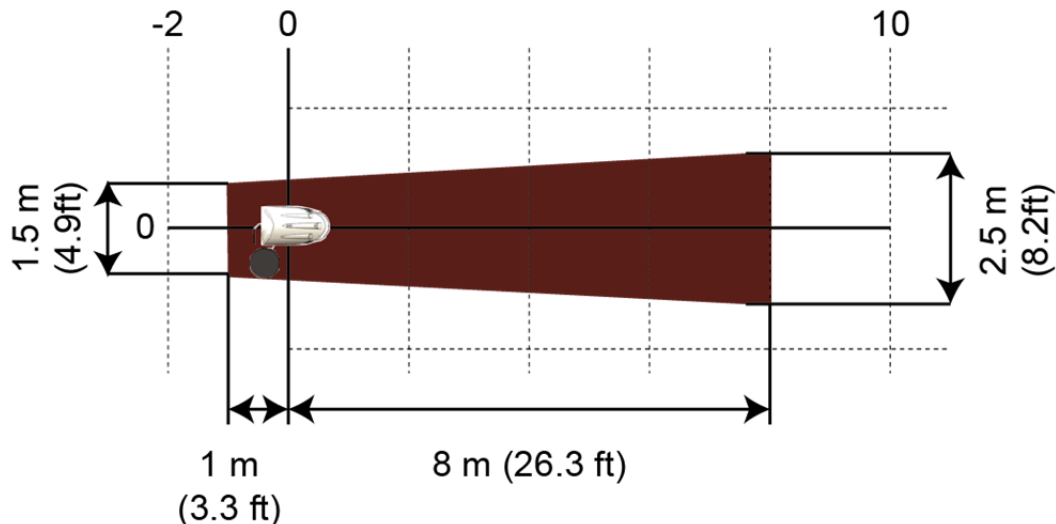
### 2.1 What is new compared to existing product range?

Besides a complete new housing concept, having a cable management integrated, the following features are new:

- a) **360PROtect™** – Near Surrounding Area Surveillance, which does not only eliminate the creep zones up to 8 m in front, but also is monitoring the area up to -1m behind the detector, as well as 0.75 m to the left and right sides.
- b) **Antimasking** for standard compliant detection of any manipulations, vandalism and tamper attacks.
- c) **Integrated Cable Management** bracket for pole and wall mount without any adaptors.
- d) **All models are IP-65 rated.**
- e) **Advanced 3D-tamper protection** including a **compass functionality** and a **removal from mounting surface** detection for latest state-of-the-art tamper protection.
- f) **iCommission** for a time and cost saving quick system setup enables an one-man-commissioning using iCommission-App on a smartphone or tablet PC.
- g) **Wireless detectors** available with an integrated RF-module (Inovonics) for wireless operation and communication of events.
- h) Wireless detectors with an **integrated smart power-management** to prolong battery-lifetime by using renewable energies e.g. solar panels. Energy is buffered for sunless or windless hours not to exhaust the four built-in batteries.
- j) **Easy on-site exchange of detector window (filter)** – no factory overhaul necessary.

### 2.2 What does “360PROtect™ – Near Surrounding Area Surveillance” mean?

360PROtect™ does not only eliminate the creep zones up to 8 m in front, but also monitors the area up to -1m behind the detector, as well as 0.75 m to the left and right sides.



### 2.3 Do I need an additional pole and an additional detector to cover the creep zone of a detector in the corner of a perimeter?

No. With “360PROtect™ inside” a detector can be mounted directly in a corner of a perimeter (fence). Ideally two detectors are mounted on one pole to save time and cost.

With 360PROtect™ the whole area around the pole is monitored against manipulation/vandalism attacks.

## **2.4 Is PRO-CMB-W cable managed bracket the same as the integrated cable management of ADPRO PRO E-detectors?**

No. The integrated cable management bracket of ADPRO PRO E-detectors is part of the new housing.

## **2.5 Do I need a pole mount adaptor?**

No. The new designed integrated cable management bracket is pole and wall mounting without any adapters.

## **2.6 What is the recommended pole diameter?**

Due to the soft and harmonic shaped design of the ADPRO PRO E-housing the wind load is very small.

The ADPRO PRO E-integrated cable management bracket is designed to fit on poles of a minimum diameter of 60 mm. But it is always recommended to use poles or masts with a much thicker body, so that swinging and swaying is not possible even when high wind speeds are occurring. As higher the wind load - caused by cameras, lighting equipment, detectors and other security products - as more stable the mast has to be, to avoid false alarms.

## **2.7 Do I need a mounting plate, when mounted e.g. on a rough plaster?**

No. There is no need for a mounting plate, as the contact for removal from mounting surface can be adjusted and water ingress does not harm the functionality of the system.

## **2.8 Which batteries can be used for wireless operation?**

It is recommended to use high quality batteries only for a reliable operation with a long-lasting life-time. The battery technology varies from alkaline to Lithium-Thionyl Chloride batteries.

## **2.9 What is the maximum input voltage coming from renewable energy sources?**

The maximum DC voltage coming from renewable energy sources e.g. a solar-panel is 30 V<sub>DC</sub>.

## **2.10 Is it possible to use iCommission for the existing ADPRO PRO-Series?**

No. It is not possible to use iCommission for the existing product portfolio.

## **2.11 Can I use ADPRO PRO E-Tool software for the existing product range of ADPRO PRO-series?**

Yes. The new tool software is backward compatible.

Please note: The following functions are only supported on the PRO E range: masking, compass, additional outputs etc.

## **2.12 Does the new ADPRO PRO E-detector monitor tamper attacks by panning the housing?**

Yes. The 3D-accelerator sensor detects any movements by tilt, pan or move. In addition an integrated (switchable) compass can also be activated to detect slow movements.

## **2.13 Are there any changes in the monitored ranges?**

No. The nominal detection ranges are exactly the same as with the today's product portfolio of ADPRO PRO-series.

## **2.14 Is RS-485 and ADPRO PRO-communication protocol still available and backward compatible?**

Yes. All ADPRO PRO E-detectors have a RS-485 communication port available as standard. The protocol is backward compatible and can be used for implementation into higher (remote) management stations.

## **2.15 Is the ADPRO PRO-250H still available?**

Yes. The PRO-250H is still available. A phase-out is not planned, yet.

## **2.16 Are the ADPRO PRO-series "intelligent" detectors still available?**

Yes. All ADPRO PRO-series intelligent detectors are still available. A phase-out is not planned.

## **2.17 Are the ADPRO PRO-series "intrinsically safe" detectors still available?**

Yes. All ADPRO PRO-series intrinsically safe detectors are still available. A phase-out is not planned.

## **2.18 Will all other ADPRO PRO-series detectors be out-phased?**

Yes. The phase-out is planned. But detectors will still be available within the next 24 months.

## **2.19 Are there any published standards for external perimeter security systems?**

No. For the time being there are no European or international standards available.

In 2014 the European technical committee CLC-TC79 will start working on prEN50606 External Perimeter Security Systems.

This standard, when published, will be converted to an IEC standard.

### 3 Product Overview

Detection Principle	Model	Code	Nominal Range		Angle
			Length	Width	
Volumetric, medium-range	PRO E-18	CH10055001	24 m (80 ft)	21 m (70 ft)	50°
	PRO E-18H	CH10055101	30 m (100 ft)	27 m (90 ft)	
Volumetric, wide-range	PRO E-18W	CH10053001	21 m (70 ft)	24 m (80 ft)	90°
	PRO E-18WRFe	CH10054301			
	PRO E-18WRFn	CH10054401			
	PRO E-18WH	CH10053101	27 m (90 ft)	30 m (100 ft)	
Volumetric, medium-range	PRO E-30	CH10063001	30 m (100 ft)	20 m (65 ft)	50°
Volumetric, medium-range	PRO E-40	CH10073001	40 m (130 ft)	10 m (33 ft)	15°
Curtain, medium-range	PRO E-45	CH10023001	50 m (165 ft)	3.3 m (11 ft)	3.8°
	PRO E-45RFe	CH10024301			
	PRO E-45RFn	CH10024401			
	PRO E-45H	CH10023101	60 m (200 ft)	3.9 m (13 ft)	3.4°
Curtain, directional, medium-range	PRO E-45D	CH10023201	50 m (165 ft)	3.6 m (12 ft)	4°
	PRO E-45DH	CH10023301	60 m (200 ft)	4.2 m (14 ft)	
Volumetric, long-range	PRO E-51	CH10083001	50 m (165 ft)	23 m (75 ft)	34°
	PRO E-85	CH10043001	60 m (200 ft)	18 m (60 ft)	17°
	PRO E-85H	CH10043101	75 m (250 ft)	23 m (75 ft)	
Curtain, long-range	PRO E-100	CH10033001	120 m (400 ft)	2.9 m (9 ft)	1.3°
	PRO E-100RFe	CH10034301			
	PRO E-100RFn	CH10034401			
	PRO E-100H	CH10033101	150 m (500 ft)	3.3 m (11 ft)	

Accessories			
iCommission		CH12003001	Remote PRO E-series vertical alignment tool
Interface Module, RS-485 Bus	IFM-485-ST	CH19000301	
PRO-Telescope	ZA P 03	242600	Alignment Telescope
Walk Tester, wireless	CT PRO 2	202483	

**Notes:**


---




**[www.xtralis.com](http://www.xtralis.com)**

**UK and Europe** +44 1442 242 330 **D-A-CH** +49 431 23284 1 **The Americas** +1 781 740 2223  
**Middle East** +962 6 588 5622 **Asia** +86 21 5240 0077 **Australia and New Zealand** +61 3 9936 7000

A *Disclaimer* about this document, statements about *Intellectual Property*, *Copyrights*, and *Liability*, as well as a *General Warning* are available in an earlier section of this document.  
Doc. 26726\_03

**ADPRO**<sup>®</sup>  
by  **xtralis**