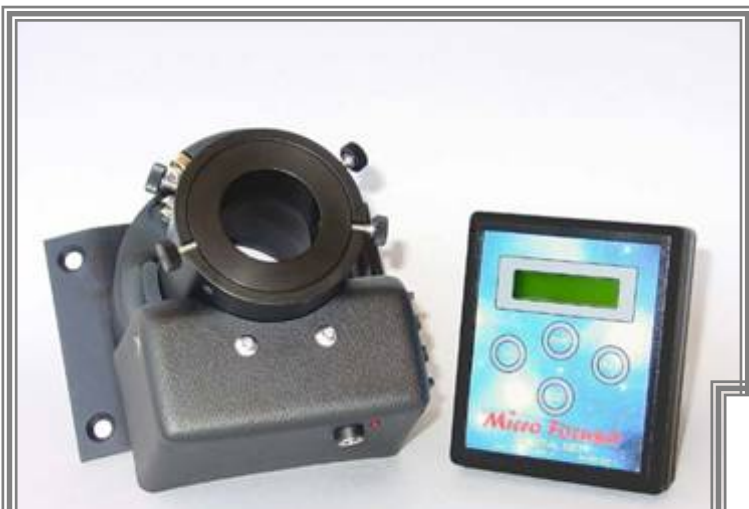


Micro Focuser

DIGITAL_NET



USER'S MANUAL

ASCOM COMPATIBLE

TABLE OF CONTENTS

INSTALLATION	- 3 -
Mechanics - Schmidt-Cassegrain	- 3 -
Mechanics - Newton	- 3 -
Electronics	- 3 -
Introduction	- 3 -
Keys	- 3 -
CONTROLLER AND COMMANDS.....	- 4 -
Figure 1 Rotary switch Figure 2 Controller keyboard	- 4 -
Figure 3 Menu device select Figure 4 Menu manual position Figure 5 Menu temperature	- 4 -
Controller options	- 5 -
Focuser options	- 5 -
A) Absolute and relative position.....	- 6 -
B) Manual mode operating.....	- 6 -
C) Memory positions	- 6 -
D) Calibration	- 6 -
TROUBLESHOOTING	- 7 -
Figure 7 Adapters and rings Figure 8 Cables Figure 9 Installation	- 7 -
REMOTE CONTROL AND SOFTWARE	- 8 -
System requirements.....	- 8 -
Software installation.....	- 8 -
The Setup page	- 8 -
Figure 10 Setup page.....	- 8 -
Options	- 9 -
Backlash.....	- 9 -
Connect	- 9 -
Table 1 Description of RS232 communication ports.....	- 9 -
The Control page.....	- 9 -
Figure 11 Control page	- 9 -
Position.....	- 10 -
Steps	- 10 -
Defined positions	- 10 -
Saving and opening Position Files.....	- 10 -
Figure 12 Window "Defined positions"	- 10 -
Temp.	- 10 -
NOTES	- 11 -
NOTES	- 12 -
Figure 13 Connectors schematic	- 13 -
TECHNICAL SPECIFICATIONS	- 14 -
Focuser.....	- 14 -
Controller.....	- 14 -
Power supply (optional)	- 14 -

INSTALLATION

Mechanics - Schmidt-Cassegrain

The **Micro Focuser Digital_NET** (MFD_NET) is designed to be compatible with most Schmidt-Cassegrain telescopes and other mounts with a standard 2 inches barrel (not BIG35 Digital_Net, subsequently appointed BIG35N). The threaded ring (**figure 7**), must be removed by hand from the focuser and attached firmly to the telescope, then connect the MFD_NET focuser rotating it if needed and block it using the three thumbscrews near the base of the focuser. Along with the MFD_NET two adapters are supplied (**figure 7**), the first permits to insert eyepieces and accessories with a diameter of 1¼", the second is designed for 2" accessories. The available travel of the focuser is approx. 20 mm (10 mm for the upgrade of the MFD_PC). The positions displayed on the hand controller are referred to the true steps of the stepper motor, 1000 steps correspond to 1,000427 mm (one steps is 0.001000427 mm or a 0,000039387 inches).

Mechanics – Newton & BIG35N

This focuser supports the same accessories of the Schmidt-Cassegrain model. To mount the focuser to the telescope use the supplied plate attaching it with screws at the same place of the previous focuser of the telescope. Before mounting the MFD_NET it is mandatory to securely attach the plate to the base of the focuser using the 4 thumbscrews supplied. The available travel of the focuser is approx. 40 or 60 mm.

Electronics

The MFD_NET or BIG35N are a network system which is composed of two or more units (Digital_Net also with the BIG35N model). The first unit is the **control box** ("**controller**", which can control up to 10 focusers, for Newton and Schmidt-Cassegrain telescopes). The other units are the **focusers**. This network allows to control many focuser in a independent (multitasking) way, using just one control box and one software. For example, it is possible to focus the main telescope and the guide telescope at the same time MFD_NET or BIG35N.

The MFD_NET comes with a cable for the 12Vcc power supply (12÷14,5 Vcc allowed range). Optionally it's available a power supply with an universal input (110/240 Vac 50/60 Hz) and 12 Vcc output. The 4-pins NET cable between the controller and the focuser is approx. 5 meters long (from each focuser it's possible to connect other 4-pins NET cables to control other devices). The maximum length of the NET cable is 1 Km. The RS232 6-pins cable is 3 meters long (maximum length: 15 mt, see **figure 8**) and must be connected between the controller and the PC, using the DB9 adapter. We recommend to connect the all the cables before turning on the MFD_NET. If a different power supply is used then it's mandatory to verify the following specifications: Minimum Vcc.: 12 Volts, maximum. 14,5 V. At least 1,25 Ampere for the current.

Introduction

The options and command of the MFD_NET or BIG35N are configurable via a "menu" system, very easy to use. These options are divided in *controller* and *focuser(s)*. A detailed description about each menu is available below, section: **CONTROLLER AND COMMANDS**. Before modifying any option please read with care the documentation available in this manual.

Keys

Four keys on the controller permit to operate and configure the MFD_NET or BIG35N:

IN, **OUT**, **ENT** and **ESC**. When in this manual they are printed in **bold** it means that these keys should be pressed to perform the operation. Do not press more than one key at the same time, all the commands require just a single click.

CONTROLLER AND COMMANDS

- I. **ID configuration:** Before powering on the MFD_NET or BIG35N, select the ID number **1** on the rotary switch (**figure 1**) located on every focuser. If more than one identical focuser is connected to the controller, then the other devices must be set with an increasing ID number (**2, 3, 4**, etc). This procedure is not needed if the focusers are different. Example: if two focusers are connected, the first is a Newton the second a Schmidt-Cassegrain, they must be set both at ID position **1**. If instead the focusers are identical (example: two Newtons) then the first must be set to position **1**, the last to position **2**. The controller must be always connected to the focuser with ID **1**.



Figure 1 - Rotary switch

- II. **Power on:** Connect the power cable to the focuser to turn it on.
- III. **Power off:** Remove the power cable. Powering off the focuser does not delete any internal setting nor the stored positions.
- IV. **Device selection:** After powering on the MFD_NET or BIG35N the buzzer will play a short beep and the writing **"Select device"** will be shown on the display. After two seconds it will be possible to choose which focuser has to be controlled, if more than one focuser is connected (see **figure 3**). In this case use the keys **IN** and **OUT** to choose the focuser and press **ENT** to confirm. Press **ESC** to return to the device selection menu where keeping **ESC** pressed for one second it will be executed the function **device search** to search the network and verify all connections.

- V. **Controller options:** Using the controller (**figure 2**) it's possible to configure all the options of the MFD_NET. The options are grouped in two sets: the first are related to the **controller**, the second to the focuser to be controlled. The controller options are general and related to all focusers, these are: **language, speed (keyboard response), contrast, temperature, buzzer, position**. To modify these settings keep pressed **ENT** for two seconds then press **IN** or **OUT** to choose the option. Press **ENT** to select the option, then **IN** and **OUT** to set the desiderated value. To confirm the new setting press **ENT** to save it and **ESC** to exit from the options menu. The procedure to modify the focuser settings are just the same: to enter into the focuser menu press **ESC** for two seconds instead of **ENT**. The options for the focuser are: **calibration, reset, minimum speed, maximum speed, backlash**.



Figure 2- Controller keyboard



Figure 3 Menu device select

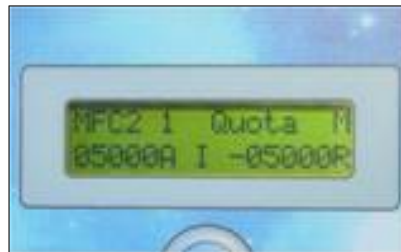


Figure 4 Menu manual position



Figure 5 Menu temperature

Controller options

The firmware version of the microprocessor will be shown when the menu is displayed.

1. **Language** : this option sets the language of the menu, it's possible to choose: English, Italian, French and German. Press **ENT** to enter, **IN** and **OUT** to choose, **ENT** to confirm.
2. **Speed** : This is the delay to switch from the minimum speed to the maximum speed when the keys are pressed to move the focuser. Press **ENT** to enter, **IN** and **OUT** to choose (minimum 2 seconds, maximum 25 seconds), **ENT** to confirm.
3. **Contrast** : this command sets the contrast of the display, useful then the external temperature is low. Press **ENT** to enter, **IN** and **OUT** to choose (minimum 20, maximum 186), **ENT** to confirm.
4. **Temperature** : this option selects the scale for the temperature, Degrees or Fahrenheit. Press **ENT** to enter, **IN** and **OUT** to choose, **ENT** to confirm.
5. **Buzzer** : enables or disables the beeps played by the internal buzzer. Press **ENT** to enter, **IN** and **OUT** to enable/disable.
6. **Position** : Sets the visualization of the position as relative, absolute, or both at the same time. Press **ENT** to enter, **IN** and **OUT** to select between **relative**, **absolute**, or **both**.

Focuser options

The firmware version of the microprocessor will be shown when the menu is displayed.

1. **Voltage** : displays the current voltage as supplied by the power supply. This function is very important to monitor the voltage when an external battery is used or when many devices are connected to the network.
2. **Calibration** : calibrates the focuser to its zero reference (whole tube inside). This function must be called if the focuser slipped for an excessive load. After the calibration the focuser will be positioned at the first quarter of its travel (5 mm for the 20 mm focuser). During the calibration the current step is displayed on the screen, for example 014 / 028, means step 14 out of 28.
3. **Reset** : this function resets all the settings to the factory default. Press **ENT** to enter, **IN** and **OUT** to enable/disable.
4. **Minimum speed** : selects the minimum speed of the motor. The valid range is: minimum 20 steps/second, maximum 190 steps/second. Press **ENT** to enter, **IN** and **OUT** to modify the setting, then **ENT** to confirm.
5. **Maximum speed** : selects the maximum speed of the motor. The valid range is: minimum 200 steps/second, maximum 600 steps/second. Press **ENT** to enter, **IN** and **OUT** to modify the setting, **ENT** to confirm.
6. **Back-Lash** : this setting compensates the gears clearance, which can cause a delay and a positioning error when the motor direction is inverted. The optimal setting must be found by trial and error, and varies from focuser to focuser, The valid range is: minimum 0, maximum 255. Press **ENT** to enter, **IN** and **OUT** to modify the setting, **ENT** to confirm.
7. **Temperature visualization** : after having selected the focuser to be controlled, (pressing the key **ENT**), press **ENT** again to display the temperature (**figure 5**) only with temperature probe (optional).

A) Absolute and relative position

The *absolute position* is a number referred to mechanical zero (whole tube inside). The *relative position* is referred to a given position chosen by the user. To select this reference follow the procedure below, be sure to operate the focuser in manual mode. All the positions are expressed in microns ($\mu\text{m} = 1/1000 \text{ mm}$).

B) Manual mode operating

After having selected the focuser to be controlled pressing the **ENT** key, the display will show on the first row the focuser model (on the left) and the letter **M** (on the right) (see **figure 4**). At this point press **ENT** again: on the first row it will be displayed the focuser model and the current temperature, on the second row the absolute position followed by the letter **A** which means "absolute position". After this data, in the middle of the row the letter **I** or **O** will mark the last direction of the focuser (**I** stands for **IN**, **O** stands for **OUT**). If a blinking cursor is visible below the number this means that the focuser is still moving.

On the right side of the second row it's displayed the relative position, followed by the letter **R**. Pressing for two seconds the **ENT** key, after a beep, the current position will be used as reference and the displayed relative position will be set to zero. Press **ESC** quickly to manage the *Memory Positions* discussed in the next paragraph.

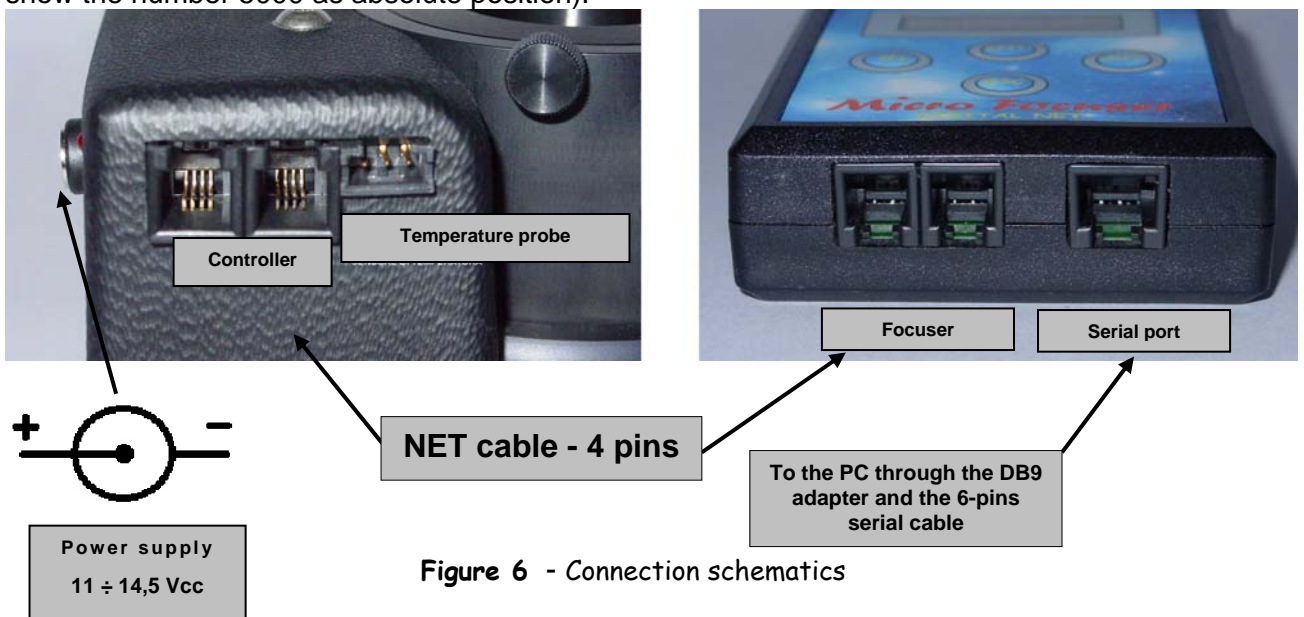
C) Memory positions

The MFD_NET or BIG35N can store up to 6 positions in memory. This feature is very useful when using a filter wheel since every filter may change the focus in a different way; another advantage is the quick refocus when changing different cameras.

After selecting the focuser pressing **ENT**, on the display it will be shown the focuser model and letter **M** on the right side of the row. Use the keys **IN** and **OUT** to select the desired memory position: now it is possible to move the focuser to that position or modify its value. The total positions available are 6. Press **ENT** to edit the current position, then press **IN** and **OUT** to modify its value. Press **ENT** again to move automatically the focuser to that position, at the end of the procedure a beep will played by the buzzer. To store in memory the current position of the focuser set the controller to *manual mode* pressing **OUT** until the letter **M** becomes visible, then press **ENT** and **IN / OUT** to find the best focus as reported by the instrumentation.

D) Calibration

This function sets the focuser to its zero reference (whole tube inside). This function must be called if the focuser was hit or it slipped for an excessive load. After the calibration the focuser will be positioned at the first quarter of its travel (5 mm for the 20 mm focuser, the display will show the number 5000 as absolute position).



TROUBLESHOOTING

- Noise for vibrations during the calibration: this can be normal and won't affect the precision of the pointing nor the quality of the imaging. The noise can be caused only by the movement of the focuser at the lowest speed during the calibration. At the start of the calibration procedure the focuser reset its references moving itself at variable speed. At first, from the current position the focuser slews to the initial position (whole barrel inside) at the maximum speed, until it detects the Hall sensor which marks the limit of the travel. At this point the focuser inverts its direction, goes back a little, then it moves forward again to find the initial position with maximum precision.
- Out of range. The focuser is programmed to respect its range of positions, between 0 and 20 mm of free travel (0/40 for the newton, 0/10 for the MFD_PC upgrade), so the position number will be limited between 0 a 20.000. Beyond this limits the motor will stop automatically and the only possible movement will be the inversion of the direction. The display will show "Out of range".
- If the focuser was hit or it slipped from its position for an excessive load, the focuser will need to be calibrated again to reset its zero reference. See the paragraph about Calibration.
- If the focuser slips often then the thumbscrews near the serial number of the MFD_NET or BIG35N must be tighten. These small screws should be tighten by an half turn, all in the same direction. If the problem cannot be corrected this way, contact the dealer or the manufacturer¹.
- For every other problem in the control box or in the focuser not listed in this manual feel free to contact the manufacturer¹.
- **Please note.** This product and its software can be improved in the future, so the specifications listed in this manual could vary in the next releases.

Warning - Connections

Attention !!! Be careful when you insert the cables, a wrong connection may damage the focuser of the serial port of PC. **See figure 6.**



Figure 7 Adapters and rings



Figure 8 Cables

¹ ***Micro Focuser*** Treviso - ITALY - e-mail : info@microfocuser.com

Remote control and software

This section describes the remote control of the MFD_NET or BIG35N from the Personal computer, with advanced features to integrate it with CCD cameras and remote observatories.

System requirements

- Microsoft Windows™ ALL
- CPU 486 DX minimum, 8 Mb RAM
- 1 Mb of free hard disk space
- CD-ROM (for installation only)
- Mouse or equivalent pointing device

Software installation

1. Insert the CD-ROM in the drive.
2. Click on **Install**, click **Open** and follow the instructions. If needed, It's possible to modify the destination folder.
3. At the end of the installation execute the software clicking on the icon: **MFD_NET**.

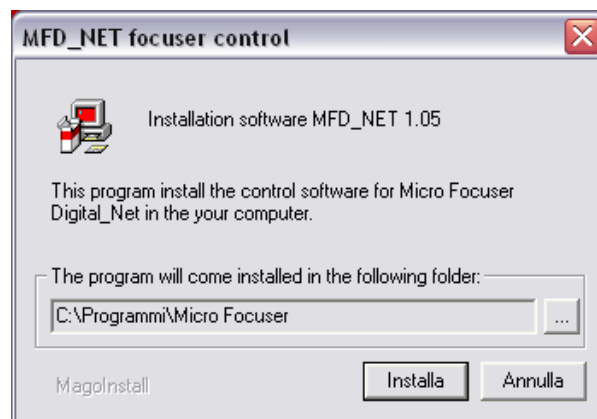


Figure 9 Installation

The Setup page

The main window is composed by two pages. The first one is related to the setup of the focuser and its connection to the PC through the serial port and ASCOM platform chosen.

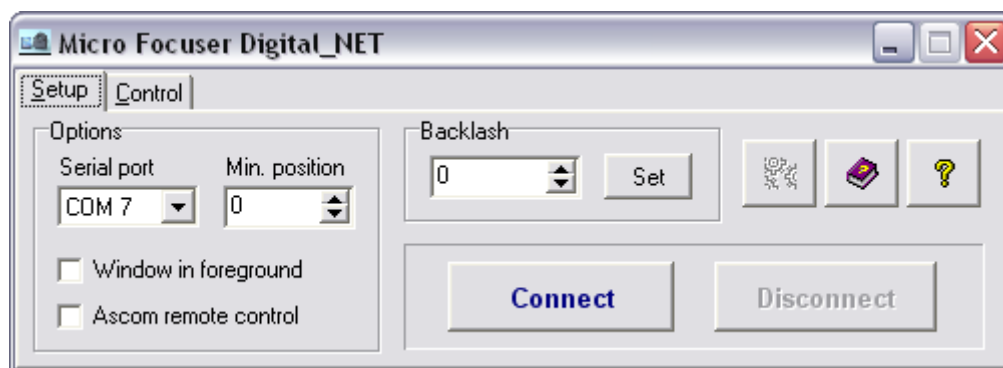


Figure 10 – Setup page

Options

These options configure the serial port of the PC for a correct communication with Micro Focuser, selecting a proper BAUD rate and COM port. It's also possible to set the program always in foreground, over other applications also when inactive, selecting the checkbox **"Window in foreground"**.

Backlash

This parameter, expressed in micron (0..255) compensates the gears clearance, which may cause a delay and a small positioning error when the motor direction is inverted. Press the button **Set** to store the new value.

Connect

Press this button to connect the software with the MFD_NET or BIG35N. If more than one focusers are available in the network then a dialog window will permit to select the device to be used. The dialog window contains a list of all focusers available and their characteristics. When the connection is active the button **"Disconnect"** becomes enabled, press it to close the session. **Always** use this button to disconnect the focuser and use it in manual mode. Closing the program will not close the connection and the focuser will remain connected.

COM port	Description
Com 1, Com 2	The standard serial port of most PCs.
Com 3, Com 4	Extra ports available when a PCI/ISA expansion card is used.
Com 5, 6, 7, 8	Extra ports available when a USB<>Serial converter is used. This is the recommended setup if the PC has not any serial port.

Table 1 – description of RS232 communication ports



Click this icon to start the automatic focuser calibration, (see point 2, section **focuser options**).



Click this icon to display a dialog window with some useful information about the focuser model currently under control and the software version.



Click this icon to start this manual.

The Control page

This page is related to the control of the focuser via the serial port.

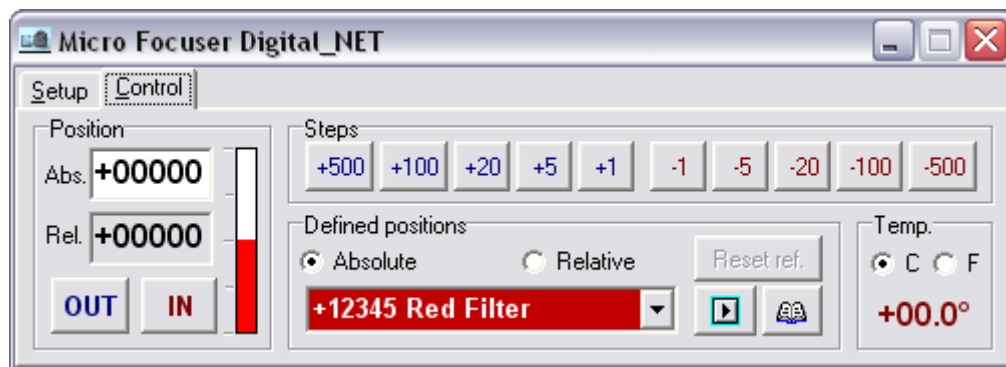


Figure 11 – Control page

Position

This panel displays the current position, both absolute and relative (see paragraph **Absolute and relative positions**, page 6). The panel contains also the buttons **IN** and **OUT** to move the focuser by a free amount. On the right side of the pointers a vertical bar that it indicates, in graphical form, the position of the focuser regarding the zero.

Steps

This panel contains some buttons to move the focuser by a fixed amount of steps. If the focuser is close to its range limits, then it will only move until the end of its travel.

Defined positions

Here it is possible to choose the visualization mode of the current position, as **Absolute** or **Relative**. Selecting **Relative** the button **Reset ref.** will be enabled, pressing it the current position will be used as a reference for the further positions (new zero reference). Under these options a *combo box* permits to select and store some user positions: write with the keyboard a number (between 1 and 20.000 for the 20mm focuser, zero won't be accepted) and a name to describe the position. The absolute positions must be in the range of the focuser and cannot be negative. The relative positions can be negative, their range depends by the current absolute position. If the relative value sets the focuser out of its range, then the command will be accepted but the focuser will obviously stop at the end of its travel.

To move the focuser to the selected position click the button **Go** or press **[ENTER]** on the PC keyboard. Every new position will be stored in the *combo box*, press the button with the “book” icon to display a dialog window (see **figure 12**) where every position can be edited as text file, saved to disk and loaded.

The correct syntax is: < Position > (Space) < Description >

Example: **3802 Green filter**

Note: The space between the position and the description is always required.

Saving and opening Position Files

All positions stored in the *combo box* can be edited, saved and loaded from the “Defined position” dialog window (figure 11). Click the “book” button to display the window then use the buttons on the tool bar to execute the desired command.

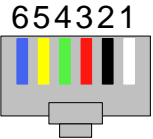


Figure 12 – Window “Defined positions”

Temp.

This panel displays the temperature as detected by the external probe. It's possible to choose the scale between Degrees and Fahrenheit.

CABLE AND SERIAL ADAPTER DESCRIPTION		
CONNECTOR RJ11	DESCRIPTION	SERIAL ADAPTER DB9
1 WHITE	NC	1 NC
2 BLACK	GND	2 BLACK
3 RED	NC	3 RED
4 GREEN	RX	4 NC
5 YELLOW	TX	5 YELLOW
6 BLU	NC	6-7-8-9 NC



FRONTAL VIEW

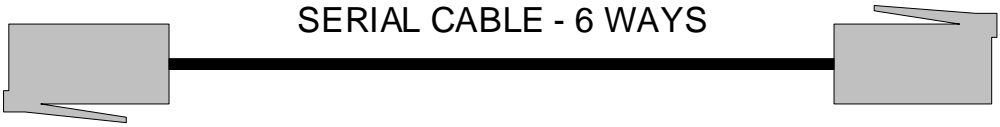


FRONTAL VIEW

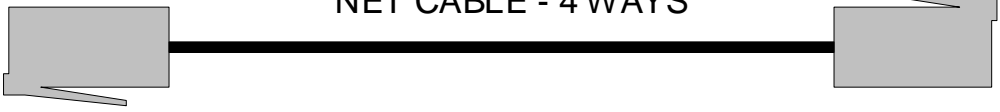


+ DQ -
FRONTAL VIEW

NET CABLE DESCRIPTION		
1	YELLOW	+12 V
2	GREEN	ACHANNEL
3	RED	BCHANNEL
4	BLACK	GND



SERIAL CABLE - 6 WAYS



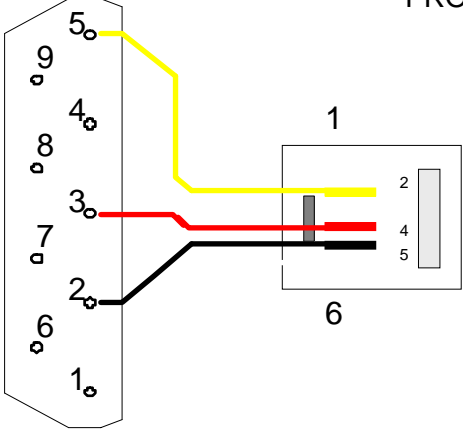
NET CABLE - 4 WAYS



TEMPERATURE PROBE (OPTIONAL)

CONNECTOR

PROBE



FRONTAL VIEW

SERIAL ADAPTER DB9

Figure 13 - Connectors schematic

TECHNICAL SPECIFICATIONS

DIGITAL_NET S/C (20 mm), NW (40 mm) or (60 mm discontinued) - BIG 35 (40 mm)

Focuser

Total travel distance, mm	20 (S/C), 40 or 60 (newton)
Total travel distance, mm BIG 35 Net	40
Precision on reset	5 µm approx.
Maximum speed	600 steps/seconds
Minimum speed	1 step/seconds
Motor	stepper micro motor Ø16 mm + reducer 166:1
Maximum load	4,5 ÷ 5,2 kg (depends by the tilt of the instruments)
Maximum load BIG 35 Net	18 ÷ 20 kg (depends by the tilt of the instruments)
Pinion (reducer)	15 teeth, INOX steel
Gear (focuser)	71 teeth, brass
Pinion (reducer) BIG 35 Net	28 teeth, INOX steel
Gear (focuser) BIG 35 Net	53 teeth, brass
Controller connector	Modular Jack 4 pin, golden - cable mt 5,00
CPU	RISC, PIC Microchip 16F876i
Technology	FLASH / EEPROM
CPU Memory	FLASH 8K – 14 bit
Ram	368 bytes
EEPROM	256 bytes
Clock frequency	16 MHz
Power consumption (max)	650 mA
Temperature probe (OPTIONAL)	Digital 9 bit, lin. ± 0,5°C (-0 / +70), cable 50 cm
Size (minimum)	110 x 92 x 75 mm (L x W x H)
Operating temperature	-25 + 65 °C
Calibration sensor	Hall effect / neodymium magnet
Power supply	external 12 ÷ 14,5 Vcc
Weight	2,90 approx. (BIG 35 Net) - D_Net 720 gr. (20 mm), 780 gr. (40 mm)

Controller

CPU	RISC, PIC Microchip 18F252i
Technology	FLASH / EEPROM
CPU memory	FLASH 32K – 16 bit
Ram	368 bytes
EEPROM	256 bytes
Clock frequency	16 MHz
Power consumption (max)	35 mA
Focuser connector	Modular Jack 4 pin, golden - cable mt 5,00
PC connector (serial)	Modular Jack 6 pin, golden - cable mt 2,40
Size (minimum)	105 x 72 x 25,5 mm (L x W x H)
Operating temperature	-25 + 75 °C

Power supply (optional)

Input	100~240 Vac, 47~63 Hz, 0,5 A
Output	12 Vcc, 1,25 A, 15W max.
Connector	Coaxial plug 5,5 mm (+Vcc central pin)
Certificate	UL - CE - GS – CB

Revision January 2015 - firmware: controller 1.34 - focuser 1.7

web: <http://www.microfocuser.com> -- e-mail: info@microfocuser.com

1999-2015 © ~~Micro Focuser~~