

Superclip Centurion



*Latest Version of user manual & superclip updates are always available at: - <http://www.fonefunshop.co.uk>
(Incl. Superclip1 & Superclip2)*

*User Manual: Superclip/Centurion
21st June 2007*

*For Latest Update Centurion Clip: - V8.30
This Manual assumes you have the latest update installed on your Superclip*

Introduction	2
Superclip Updates by EMAIL	2
Unlocking Phones, Mode Guide	4
Pantech C300	5
Motorola Iden	5
LG 2g Unlock	6
LG 2G USA Unlock	7
LG Shine Unlock	8
LG Prada Unlock	8
Samsung E250	8
LG 8180 8330 Unlock	9
LG 8110, 8120, 8130, 8138 Unlock	9
Lobster Unlock Procedure.....	10
NEC-3g Unlock	10
Total Sony Ericsson CID 36/37	11
Nokia Unlock	12
Nokia Connector Compatibility Chart,	13
Samsung	14
Sharp	17
Panasonic	19
Sendo	20
Motorola	21
VK-Mobile	22
Benq E61	22
Installing The SuperClip On Your PC	26
Activating Optional Updates (USA Option)	32

Introduction.

Your new clip is a universal device for removing the network/SIM locks from a variety of models of mobile phones from different networks. Your new superclip is equipped with 2 types of communication protocols, Serial and USB; this is 1 of the first clips equipped with both.

Superclip Updates by EMAIL.

You can now subscribe to our "Superclip Bulletin Service", by registering your email address; you will receive updates direct to your mailbox as soon as they are released!!!

Please go to <http://www.fonefunshop.co.uk>

We will also notify you when new user manuals are available, or information relating to the operation of your New Superclip.

Through Out This Guide Certain Terms Will Be Used To Avoid Confusion:

TARGET PHONE:	"the phone being unlocked"
DEVICE:	"Superclip, the unlock clip"
ADAPTOR:	"cable that connects the DEVICE to the Phone connectors and to its Data Cable"

Technical Support & Help: Important Information!!!!

Please before phoning for help or technical support check first that you have the latest update installed on your superclip!!!!

1. Goto <http://www.fonefunshop.co.uk> and download the latest updates and install them on your superclip.
2. Download the latest user manual from <http://www.fonefunshop.co.uk>, and check that the information you require is not in there before phoning your supplier.

Powering Your Centurion Clip

Please use a 9V PP3 Battery and the supplied cable to power your Centurion Clip

Connecting Centurion Clip to Your PC via USB

If your Centurion Clip has no software in it (lights will flash up and down randomly)

To connect your super clip to your pc:

- 1) Plug in 9V power
- 2) Plug in USB lead
- 3) LED 1 should be lit

If your Super Clip has software in it (steady Lit LEDs)

To connect your super clip to your pc:

- 1) Plug in USB lead
- 2) Plug in 9V power within 2 seconds of plugging in the USB lead
- 3) LED 1 should be lit

Unlocking Phones, Mode Guide

Please read the specific instructions for each type of phone, it is very important to follow instructions to the letter.

Points to remember when using your Superclip !!!

1. Always power your clip with a descent Battery; failure to do so could result in your clip failing during unlocking.
2. Always make sure the target phone you are unlocking has a full charge; damage can result if the phone fails during unlocking.
3. Always remove the SIM card from the phone. (Unless otherwise instructed)
4. Never interrupt the connection between the Superclip and the target phone during unlocking; damage to the target phone could result.
5. **Never attempt to unlock a phone without checking the user manual for specific instructions for that model.**
6. Check regularly for new updates and instructions from <http://www.fonefunshop.co.uk>

LED Phone Mode Table

Before unlocking a phone with the superclip, you must select the correct mode, the mode of the superclip is displayed by the state of it's 4 LEDs, you simply press the "Select" button to change the Superclip's mode.

NEVER ATTEMPT TO UNLOCK A PHONE WITH OUT READING FULLY THE SPECIFIC INSTRUCTIONS FOR THAT MODEL !!!!				
CLIP MODE	LED-1	LED-2	LED-3	LED-4
Nokia DCT3 Unlock	Off	Off	Off	On
Nokia DCT4 Unlock	Off	Off	On	Off
Nokia DCT4 Security Code Reset	Off	Off	On	On
Total LG 2G, including KG800 Chocolate	Off	On	On	Off
LG 2G USA	Off	On	On	On
Samsung A1XX, A3XX, A4XX Unlock	On	Off	Off	On
Samsung Q/V/SXXX, P4XX, E710 Unlock	On	Off	On	On
Samsung E700, E800, SGHx600 Unlock	On	On	Off	On
Samsung C100 Unlock	On	On	On	On
Samsung E720	Blinking	Off	Off	Off
Samsung E330	Off	On	Off	On
Samsung Z105, Z107	Blinking	Blinking	Off	Off
Sharp GX-1, GX-10, GX10i Unlock	Blinking	Off	Off	On
Sharp GX20 Unlock	Blinking	Off	On	Off
Sharp GX30 Unlock	Blinking	Off	On	On
Panasonic X60 Unlock	Blinking	On	Off	Off
Sharp GX15, GX17, GX25, GX29	Blinking	Blinking	Off	Off
Sendo Unlock	Blinking	On	Off	On
Motorola P2k (V60, V66, V70 & Ti280 etc.) Unlock	Blinking	On	On	On
Motorola V300, V400, V500, V525, V600	Blinking	blinking	Off	Off
Motorola V220, V80 Unlock	Blinking	Blinking	Off	On
VK207, VK530	Blinking	Blinking	On	Off
NEC-3g	Blinking	Blinking	On	On
Requires LG Shine, Prada & Samsung E250 Activation!				
LG shine, KG110, KG120, KG200, KG210, KG220, KG225, KG300	On	Off	Off	Off
LG Prada, KE820, KE260, KE600, KE608, K608N, KE770, KE800.	Off	On	Off	On
Samsung E250	On	Off	On	Off
BB5 unlock – COMING SOON!				
Requires USA Activation!				
MOTOROLA IDEN	Blinking	On	On	Off
Pantech C300	Blinking	Blinking	Blinking	On
Removed from V8.00 and later (install v7.90 to use the following)				
Benq-Siemens E61	Blinking	Blinking	Blinking	Off
Total Sony Ericsson CID36	Off	On	Off	On
Lobster, 485, 575, 544	On	Off	Off	Off
LG8110, 8120, 8130, 8180, 8330	On	Off	On	Off

Pantech C300

Models:	Pantech C300, G700, PG1500, PG3200 <i>not tested</i>
Clip Firmware	V7.80 or V7.90
LED Sequence:	Blink, Blink, Blink, On
Phone:	Powered Off
Connector	C300 Pantech

1. Switch on the Superclip and select **Pantech**
2. Connect up the phone. (No SIM, Battery removed)
3. Press "Enter" button.
4. Insert Battery into phone
5. Wait for Superclip's LEDs to return to mode indication.
6. Phone unlocked.

Motorola Iden

Models:	850, i450, R9 & R8: i355, i605, i710, i530, i530, i305, i833, i835, i415, i275, i860, i860 Woody, i860 Tattoo, i830, i830 Roxy, i730, i285, i215, i205, i305, i530, i710, i325, i315, i600, i390, i370, i1000, i1000plus, i500plus, i700plus, i2000plus, r750plus, iX1000, i550plus, i2000, i85s, i50sx, i55sr, i80s, i90c, i85s, i80s, i30sx, i35s, i95cl, i60c, i90c, i88s...ect
Clip Firmware	V7.80 or V7.90
LED Sequence:	Blink, On, On, Off
Phone:	Powered Off
Connector	Motorola Iden

1. Switch on the Superclip and select **IDEN**
2. Connect up the phone. (No SIM, Powered ON)
3. Press "Enter" button.
4. Wait for Superclip's LEDs to return to mode indication.
5. Phone unlocked.

LG 2g Unlock

Models:	Total LG2G, including KG800 Chocolate (Full list below)
Clip Firmware	Centurion V8.30
LED Sequence:	Off, On, On, Off
Phone:	Powered Off
Connector	PS2, LG7050, 510 or KG800

LG-CG225	LG-M6100	LG-L1200	LG-C1200
LG-F7200	LG-MG105	LG-L342i	LG-G1500
LG-F1200	LG-A7110	LG-L341	LG-G1600
LG-KG800	LG-A7150	LG-F2400	LG-W3000
LG-KG320	LG-B2070	LG-B2100	LG-GW3100
LG-ME591	LG-B2150	LG-C2100	LG-C3100
LG-G7120	LG-B2250	LG-C3320	LG-G4010
LG-F2250	LG-C1150	LG-F2100	LG-G4050
LG-F3000	LG-C1300i	LG-F2300	LG-GW5200
LG-MG100	LG1300i	LG-F7250	LG-GW5220
LG-ME500	LG-C3380	LG-C3300	LG-GW5300
LG-KG210	LG-L1400	LG-C3310	LG-GW5310
LG-KG225	LG-F9100	LG-C3400	LG-GW5400
LG-KG220	LG-M4410	LG-B2000	LG-G5500
LG-CE500	LG-MG191	LG-B2050	LG-G7000
LG-MG105	LG-P7200	LG-L5100	LG-G7020
LG-M6100	LG-S5000	LG-L3100	LG-G7030
LG-C1500	LG-S5200	LG-C2200	LG-G7050
LG-MG200	LG-B1200	LG-L1100	LG-G7070
LG-F2200	LG-B1300	LG-C1400	LG-G7100
LG-G7200	LG-C1100	LG-G510	LG-G7120

1. Switch on the Super clip and select **Total LG2G**
2. Connect up the phone. (No SIM, Powered OFF)
3. Press "Enter" button.
4. Press and hold "Power" button on phone.
5. Wait for Super clip's LEDs to return to mode indication.
6. Phone unlocked.

Factory Reset

If the phone is still locked then power on phone and enter 2945## select factory reset

LG 2G USA Unlock

Models: USA LG 2G Models (Full list below)
Clip Firmware Centurion V8.30
LED Sequence: Off, On, On, On
Phone: Powered Off
Connector PS2, LG7050

LG-C1300	LG-G4011	LG-G7050	LG-Ce500	LG-F1200
LG-C2000	LG-G4020	LG-L1100	LG-7110	LG-KG810
LG-F7250	LG-G4050	LG-L1400	LG-VX5200	LG-MG810
LG-F9100	LG-G5500	LG-L5100	LG-C2000	LG-MG530
LG-G4010	LG-G7000	LG-T5100	LG-C1500	LG-CG300
LG-G7020	LG-G7030		LG-AX5000	

1. Switch on the Super clip and select **Off, On, On, On**
2. Connect up the phone. (No SIM, Powered OFF)
3. Press "Enter" button.
4. Press and hold "Power" button on phone.
5. Wait for Super clip's LEDs to return to mode indication.
6. Phone unlocked.

Factory Reset

If the phone is still locked then power on phone and enter 2945## select factory reset

**YOU MUST ACTIVATE YOUR CLIP BEFORE YOU CAN UNLOCK THESE PHONES.
PLEASE CONTACT YOUR SUPPLIER FOR MORE INFORMATION ON THIS!**

LG Shine Unlock

Models: LG Shine, KE820, KE260, KE600, KE608, K608N, KE770, KE800, KG110, KG120, KG200, KG210, KG220, KG225, KG300.
Clip Firmware: Centurion V8.30 (with activation)
LED Sequence: On, Off, Off, Off
Phone: Powered Off
Connector: PS2, LG7050, KG800

1. Switch on the Super clip and select **On, Off, Off, Off**
2. Connect up the phone. (No SIM, Powered OFF)
3. Press "Enter" button.
4. Press and hold "Power" button on phone.
5. Wait for Super clip's LEDs to return to mode indication.
6. Phone unlocked.

LG Prada Unlock

Models: LG Prada, KE820, KE260, KE600, KE608, K608N, KE770, KE800, KG110, KG120, KG200, KG210, KG220, KG225, KG300.
Clip Firmware: Centurion V8.30 (with activation)
LED Sequence: Off, On, Off, On
Phone: Powered Off
Connector: PS2, LG7050

1. Switch on the Super clip and select **Off, On, On, On**
2. Connect up the phone. (No SIM, Powered OFF)
3. Press "Enter" button.
4. Press and hold "Power" button on phone.
5. Wait for Super clip's LEDs to return to mode indication.
6. Phone unlocked.

Factory Reset

If the phone is still locked then power on phone and enter 2945## select factory reset

Samsung E250

Models: Samsung E250
Clip Firmware: Centurion V8.30 (with activation)
LED Sequence: On, Off, On, Off
Phone: Powered Off
Connector: PS2, D800

1. Switch on the Super clip and select **On, Off, On, Off**
2. Connect up the phone. (No SIM, Battery OUT)
3. Press "Enter" button.
4. Insert Battery
5. Wait for Super clip's LEDs to return to mode indication.
6. Phone unlocked.

LG 8180 8330 Unlock

Models:	LG 8180, 8330 all versions
Clip Firmware	V7.80 or V7.90
LED Sequence:	Off, On, Off, On
Phone:	Powered Off
Connector	PS2, LG8110 Connector

THESE PHONES WERE REMOVED IN UPDATE V8.30; TO UNLOCK THEM YOU MUST DOWNGRADE YOUR CLIP TO V7.80 OR V7.90!

1. Switch on the Super clip and select LG 8180, 8330 unlock
2. Connect up the phone. (No SIM, Powered OFF)
3. Press "Enter" button.
4. Press "Power" button on phone.
5. Wait for Superclip's LEDs to return to mode indication.
6. Phone unlocked.

LG 8110, 8120, 8130, 8138 Unlock

Models:	LG 8110, 8120, 8130, 8138 all versions
Clip Firmware	V7.80 or V7.90
LED Sequence:	Off, On, Off, On,
Phone:	Powered Off
Connector	PS2, LG8110 Connector

THESE PHONES WERE REMOVED IN UPDATE V8.30; TO UNLOCK THEM YOU MUST DOWNGRADE YOUR CLIP TO V7.80 OR V7.90!

1. Switch on the Super clip and select LG 8110, 8120, 8130, 8138 Unlock.
2. Connect up the phone. (No SIM, Powered OFF)
3. Press "Enter" button.
4. Press "Power" button on phone.
5. Wait for Superclip's LEDs to return to mode indication.
6. Phone unlocked.

Lobster Unlock Procedure

Models: Lobster, 485, 575, 544
Clip Firmware V7.80 or V7.90
LED Sequence: **On, Off, Off, Off**
Phone: Powered Off
Connector PS2, Lobster Connector (3 types 485, 575, 544)

THESE PHONES WERE REMOVED IN UPDATE V8.30; TO UNLOCK THEM YOU MUST DOWNGRADE YOUR CLIP TO V7.80 OR V7.90!

Lobster phones are grouped into 2 separate groups for unlocking
Each Group as it's stage on Lobster Unlock Mode on the Superclip

Stage identification: - (count the stages)

- Waiting for ignition:- **slow alternating between 2 & 3**
- About to change to next stage:- **Fast alternating between 2 & 3**

The Clip will run through the stages when you select LOBSTER and press the enter button.

Stage 1 / Group 1	Stage 2 / Group 2
485, 575	544

1. Switch on the Superclip and select **Lobster**
2. Connect up the phone. (No SIM, Powered OFF)
3. Press "Enter" button.
4. Press "Power" button on phone.
5. Wait for Superclip's LEDs to return to mode indication.

Phone unlocked.

NEC-3g Unlock

Models: 228, 338, 313, 616 & 616v (338 V4 supported)
LED Sequence: **Blinking, Blinking, On, On**
Clip Firmware V7.80 or V7.90
Phone: Powered on
Connector PS2, GX-30 connector

1. Switch the Superclip on and select **NEC-3G mode**
2. Ensure the Target phone is Powered On with no SIM
3. Connect to the Superclip.
4. Press the "Enter" button.
5. Wait for NEC to power down
6. Phone Unlocked

Total Sony Ericsson CID 36/37

Models:	<ul style="list-style-type: none">• W800• K600i, K608i, K300, K300i, K500, K750i, D750, D750i• J300i/J300a/J300c, J200, J200i, J200• V600i, Z1010, Z800, Z500 V800, V802SE, Z800i, Z1010i, Z1010c, Z500i, Z500a, Z500c, Z600 and Z608• F500i, K500i, K500c, K506c, K508i, K508c, K700i and K700c• S700i, S700c and S710a
LED Sequence:	Off, On, Off, On,
Clip Firmware	V7.80 or 7.90
Phone:	Powered Off (Fully Charged Battery)
Connector	PS2, Ericsson connector, K750 connector.

THESE PHONES WERE REMOVED IN UPDATE V8.30; TO UNLOCK THEM YOU MUST DOWNGRADE YOUR CLIP TO V7.80 OR V7.90!

Always turn Sony Ericsson phones on before unlocking (especially K700i) new handsets are not fully calibrated until the first time they are switched on after being flashed in the factory (new handsets will display "please wait" and a progress bar) if you unlock the phone before calibration is complete you will need to re-flash the phone.

Phones with older style SE connection

1. Switch on the Superclip and select Total Sony-Ericsson
2. Connect up the phone. (No SIM, Powered Off)
3. Press the "Enter" button
4. Wait for Superclip's LEDs to return to mode indication
5. Phone Unlocked

If LEDS 1 and 4 Flash at end of the process complete the following with out turning the phone on

1. Remove phone battery
2. Select Sony-Ericsson
3. Press "Enter" button
4. Insert battery into phone
5. Wait for all 4 LEDs on, then wait for LED 1 before removing phone.

Phones with newer style K750 SE connection

1. Switch on the Superclip and select Total Sony-Ericsson
2. Connect up the phone. (No SIM, Powered Off)
3. Press the "Enter" button
4. When Superclip LEDS blink power on the phone
5. Wait for Superclip's LEDs to return to mode indication
6. Phone Unlocked

If LEDS 1 and 4 Flash at end of the process complete the following with out turning the phone on

1. Remove phone battery
2. Select Sony-Ericsson
3. Press "Enter" button
4. Insert battery into phone
5. Wait for all 4 LEDs on, then wait for LED 1 before removing phone.

(some may require the process twice, new phones always insert sim and allow to log onto network before unlocking)

Tips & Tricks

You can check, the CID version on most SE phones by entering the service menu

You the following key sequence (where > means menu right, < means menu left)

>*<<*<*

(CID 49 **not** supported)

Nokia Unlock

Unlocking Nokia DCT-3 Phones

Models: See List [Here](#)

LED

Sequence: Off, Off, Off, On

Phone: Powered On

1. Switch on the Superclip and select **Nokia DCT3**
2. Connect the phone (no SIM powered on)
3. Press "ENTER" button.
4. Wait for Superclips LEDs to return to mode indication
5. Phone Unlocked

Note: If unlock fails switch phone on after connecting to the superclip, as soon as the phones backlights come on press the "Enter" button on the Superclip.

Unlocking Nokia DCT-4 Phones

Models: See List [Here](#)

LED

Sequence: Off, Off, On, Off

Phone: Powered On

1. Switch on the Superclip and select **Nokia DCT4**
2. Connect the phone (no SIM powered on)
3. Press "ENTER" button.
4. Wait for Superclips LEDs to return to mode indication
5. Phone Unlocked

Reset Security Code Nokia DCT-4 Phones

Models: See List [Here](#)

LED

Sequence: Off, Off, On, On

Phone: Powered On

1. Switch on the Superclip and select **Nokia DCT4 Security Code Reset**
2. Connect the phone (no SIM powered on)
3. Press "ENTER" button.
4. Wait for Superclips LEDs to return to mode indication
5. Security Code Reset To Factory Default (1234)

The following phones are BB5 not DCT4 and can not be unlocked:-

6270, 6280, 6630, 6680, 6681, 6682, 7370, N70, N71, N90, E60, E61, E70, N80, N91, N92

Nokia DCT-3 Phones

The previous generation of Nokia Phones to those currently marketed by Nokia. *This list is not comprehensive*

2100 - NAM-2	3210 - NSE-8	3310 - NHM-5
3330 - NHM-6	3390 - NPB-1	3410 - NHM-2
5110 - NSE-1	5130 - NSK-1	5190 - NSB-1
5210 - NPM-5	6150 - NSM-1	6190 - NSB-3
6210 - NPE-3	7110 - NSE-5	8210 - NSM-3
8250 - HSM-3D	8290 - NSB-7	8850 - NSM-2
8890 - NSB-6	9210 - RAE-3N	

Nokia DCT-4 Phones

The latest and current generation of phones from Nokia. *This list is not comprehensive.*

3320 - NPC-1	3360 - NPW-1	3510 - NHM-8
3510i - RH9	3590 - NPM-8	3650 - NHL-8

5100 - NPM-6	6100 - NPL-2	6310 - NPE-4
6310i - NPL-1	6340 - RH13	6360 - NPW-2
6510 - NPM-9	6590i - NSM-9	6610 - NHL-4U
6800 - NHL-6	7210 - NHL-4	7250 - NHL-4J
7650 - NHL-2	8310 - NHM-7	8390 - NSB-8
8910 - NHM-4	8910i - NHM-4NX	6600-
7600	7610	N-Gage
N-Gage-QD	5140	6820

Nokia Connector Compatibility Chart,

Not all Nokia phones have a unique connector, please use the chart below, to check for compatible connectors.

- * 1100, 1100a, 1100b, 1101, 1110, 1600, 2300, 2300a, 2600
- * 1220, 1260, 2220, 3320, 3360
- * 2100, 3610, 5210, 8210, 8250, 8290, 8850, 8855, 8890
- * 2112, 3100, 3100b, 3108, 3120, 6100, 6108
- * 2280
- * 2650, 2651
- * 3200, 3200b, 6200, 6220, 6610, 6610i, 7210, 7250, 7250i
- * 3210
- * 3220, 3220b, 6020, 6020b, 6021, 7260
- * 3230
- * 3250
- * 3300, 3300b
- * 3310, 3315, 3330, 3350, 3390, 3410, 5510
- * 3320
- * 3510, 3510i, 3530, 3590, 3595
- * 3586i
- * 3600, 3650, 3660
- * 5100, 5100a
- * 5110, 5110i, 5130, 5190, 6110, 6130, 6150, 6190, 6210, 6250, 7110
- * 5140, 5140b, 5140i
- * 6030, 6030a (1100 cable works if plastic is cut down)
- * 6060
- * 6101, 6102
- * 6111
- * 6170, 6170b, 7270
- * 6230, 6230b, 6230i
- * 6255
- * 6260
- * 6310, 6310i, 6340, 6340i, 6360, 6370, 6385
- * 6510, 8310
- * 6600
- * 6620
- * 6650
- * 6670, 6670b, 7610, 7610b
- * 6680, 6681
- * 6800, 6800a, 6810
- * 6820a, 6820b
- * 7200, 7200b
- * 7280
- * 7600
- * 7650
- * 7710
- * 8800
- * 8910, 8910i
- * N-GAGE
- * N-GAGE QD

The following phones are BB5 and can not be unlocked:

6270, 6280, 6630, 6680, 6681, 6682, 7370, N70, N71, N90, E60, E61, E70, N80, N91, N92

6170	Griffin/UFS/JAF type cable only available use with PS-2 to Griffin adaptor
7280	Griffin/UFS/JAF type cable only available use with PS-2 to Griffin adaptor
7710	Griffin/UFS/JAF type cable only available use with PS-2 to Griffin adaptor
3230	Griffin/UFS/JAF type cable only available use with PS-2 to Griffin adaptor
8800	Griffin/UFS/JAF type cable only available use with PS-2 to Griffin adaptor
6101	Griffin/UFS/JAF type cable only available use with PS-2 to Griffin adaptor
6111	Griffin/UFS/JAF type cable only available use with PS-2 to Griffin adaptor
6060	Griffin/UFS/JAF type cable only available use with PS-2 to Griffin adaptor

Samsung

Samsung E800

Models: E800
LED Sequence: On, On, Off, On
Phone: Powered Off
Connector PS2, E700 Connector

1. Switch on the Superclip and select **Samsung E800** (Samsung E700, E800, SGHx600 option)
2. Press "Enter" button.
3. Connect the phone and press it's power button to power on.
4. Phone should go into "TAT" mode
5. Phone Unlocked.

Samsung D500, D600 (D600e not supported)

Models: D500, D600
LED Sequence: On, On, Off, On
Phone: Powered Off
Connector PS2, D500 Connector

1. Switch on the Superclip and select **Samsung E800** (Samsung E700, E800, SGHx600 option)
2. Connect the phone.
3. Press "Enter" button.
4. Power on the phone, Phone should go into "TAT" mode
5. Phone Unlocked.

Samsung E810

Models: E810
LED Sequence: On, On, Off, On
Phone: Powered Off
Connector PS2, E810 Connector

1. Switch on the Superclip and select **Samsung E810** (Samsung E700, E800, SGHx600 option)
2. Connect the phone.
3. Press "Enter" button.
4. Power on the phone, Phone should go into "TAT" mode
5. Phone Unlocked.

Samsung E820

Models: E820
LED Sequence: On, On, Off, On,
Phone: Powered Off
Connector PS2, E700 Connector

1. Switch on the Superclip and select Samsung E820 (Samsung E700, E800, SGHx600 option)
2. Connect the phone.
3. Press "Enter" button.
4. Power on the phone, Phone should go into "TAT" mode
5. Phone Unlocked

Samsung E720

Models: E720
LED Sequence: **Blinking, Off, Off, Off**
Phone: Powered Off
Connector PS2, E810 Connector

1. Switch on the Superclip and select **Samsung E810** (Samsung E700, E800, SGHx600 option)
2. Connect the phone.
3. Press "Enter" button.
4. Power on the phone, Phone should go into "TAT" mode
5. Phone Unlocked.

Samsung E710

Models: E710
LED Sequence: **On, Off, On, On**
Phone: Powered Off
Connector PS2, E700 Connector

1. Switch on the Superclip and select Samsung E710 (Samsung Q/V/SXXX, P4XX, E710 Unlock)
2. Press "Enter" button.
3. Connect the phone (powered on)
4. 4 LEDS come on, to show success
5. Phone Unlocked.

Samsung E330 Code Reader

Models: E330
LED Sequence: **Off, On, Off, Off**
Phone: Powered Off
Connector PS2, E700 Connector

1. Switch on the Superclip and select **Samsung E330**
2. Connect the phone.
3. Press "Enter" button.
4. Power on the phone, Phone should go into "TAT" mode
5. Codes will be read in 1 second.
6. The clip will then warn you the code is about to be displayed (LEDs will sequence up and down, Knight Rider style)
7. All 4 LEDs will then flash the first number, there will be a 2 second gap between each number.
8. All 4 LEDs will remain on after the last number.

Read the unlock code from the phone using the clip. The superclip will then give you the code on the LEDs of the clip... All 4 LEDs will blink and tell you what number. So for number 4 all 4 LEDs will blink 4 times. For "0" LEDs will flash 10 times.

Samsung S500

Models: S500
LED Sequence: On, Off, On, On
Phone: Powered On (try off if phone does not unlock)
Connector: PS2, E700 Connector

1. Switch on the Superclip and select **Samsung E820** (Samsung Q/V/SXXX, P4XX, E710 Unlock)
2. Connect the phone.
3. Press "Enter" button.
4. Phone Unlocked.

Samsung A800 (You must downgrade your clip to V7.80 or V7.90 to unlock this phone!)

Models: A800
LED Sequence: On, Off, On, Off
Phone: Powered On (try off if phone does not unlock)
Connector: PS2, A300 Connector

1. Switch on the Superclip and select Samsung A800.
2. Connect the phone.
3. Power on the phone.
4. Press "Enter" button.
5. Phone Unlocked.

Samsung Z105, Z107 Code Reader

Models: Z105, Z107
LED Sequence: Blinking, Blinking, Off, Off
Phone: Powered On
Connector: Original Z105 USB Cable

1. Switch on the Superclip and select **Samsung Z105**
2. Connect the phone.
3. Press "Enter" button.
4. Codes will be read in 1 second.
5. The clip will then warn you the code is about to be displayed (LEDs will sequence up and down, Knight Rider style)
6. All 4 LEDs will then flash the first number, there will be a 2 second gap between each number.
7. All 4 LEDs will remain on after the last number.

Read the unlock code from the phone using the clip. The superclip will then give you the code on the LEDs of the clip... All 4 LEDs will blink and tell you what number. So for number 4 all 4 LEDs will blink 4 times. For "0" LEDs will flash 10 times.

Samsung E530

Models: E530
LED Sequence: Blinking, Off, Off, Off
Phone: Powered On
Connector: PS2, E530 Connector

1. Switch on the Superclip and select **Samsung E530** (Samsung E720 option)
2. Connect the phone.
3. Press "Enter" button.
4. Phone Unlocked.

Sharp

Sharp GX1, GX10, GX10i

Models:	GX1, GX10, GX10i
LED Sequence:	Blinking, Off, Off, On
Phone:	Powered On
Connector	PS2, GX10 connector (<i>do not confuse with GX20 looks the same but wired differently</i>)

1. Switch the Superclip on and select Sharp **GX1, GX10**
2. Ensure the Target phone is Powered ON.
3. Connect to the Superclip.
4. Press the "Enter" button.
5. Wait for Superclip's LEDs to return to mode indication.
6. Phone Unlocked

Tips & Tricks

If unlock fails try waiting for phone to say "waiting for SIM card" before pressing enter button, If that fails press enter button as soon as phone backlights come on.

Sharp GX15, GX17, GX25, GX29

Models:	GX15, GX17, GX25
LED Sequence:	Blinking, Blinking, Off, Off
Phone:	Powered On
Connector	USB, GX15 Cable

1. Switch the Superclip on and select **Sharp GX15**
2. Ensure the Target phone is Powered ON
3. Connect to the Superclip
4. Press the "Enter" button
5. You will see "XXXX" on the target phone's screen
6. After 5 seconds press 1. on the target phones keypad
7. Wait a further 5 seconds and press 99 on the phones keypad.
8. Press "Select" on the phones keypad. (Right hand button under LCD)
9. Wait 5 seconds and press number 3 on phones keypad. (you may have to press 1 to confirm)
10. Wait a further 5 seconds and press "Select" on the phones keypad (Right hand button under LCD)
11. After 10 seconds the handset will display "Finished"
12. Wait 5 Seconds and power down the phone, using the top right butt on on the phones keypad, you will have to press it 3 times.
13. Wait 3 seconds and power the handset back on, and then power off.
14. You may now disconnect the phone from the Superclip.

Tips & Tricks

Some GX-15 phones do not appear to go into diag mode (display XXXX), allow the superclip to return to mode indication, then turn the GX15 off and back on, the phone should turn back on in Diag mode.

Sharp GX20 Unlocking

Models:	GX20
LED Sequence:	Blinking, Off, On, Off
Phone:	Powered On
Connector	PS2, GX20 Connector (<i>different from GX10 connector</i>)

1. Switch the Superclip on and select Sharp **GX20**
2. Ensure the Target phone is Powered ON.
3. Connect to the Superclip.
4. Press the "Enter" button.
5. Wait for Superclip's LEDs to return to mode indication.
6. Phone Unlocked

Sharp GX30, TM100, TM150 Unlocking

Models: GX30, TM100, TM150
LED Sequence: **Blinking, Off, On, On**
Phone: Powered On
Connector PS2, GX30 Connector

1. Switch the Superclip on and select **Sharp GX15**
2. Ensure the Target phone is Powered ON
3. Connect to the Superclip
4. Press the "Enter" button
5. You will see "XXXX" on the target phone's screen
6. After 5 seconds press 1. on the target phones keypad
7. Wait a further 5 seconds and press 99 on the phones keypad.
8. Press "Select" on the phones keypad. (Right hand button under LCD)
9. Wait 5 seconds and press number 3 on phones keypad.
10. Wait a further 5 seconds and press "Select" on the phones keypad (Right hand button under LCD)
11. After 10 seconds the handset will display "Finished"
12. Wait 5 Seconds and power down the phone, using the top right butt on on the phones keypad, you will have to press it 3 times.
13. Wait 3 seconds and power the handset back on, and then power off.
14. You may now disconnect the phone from the Superclip

Panasonic

Panasonic X60 Unlock

Models: X60,
LED Sequence: **Blinking, On, Off, Off**
Phone: Powered On
Connector Jack Plug (labelled T191)

1. Switch on the Superclip and select Panasonic X60
2. Connect the phone (Powered ON)
3. Press "Enter" button.
4. Wait for Superclips LEDs to return to mode indication.
5. Insert incorrect SIM Card and then power on phone. (1 the phone will not accept)
6. type 52824** to open service menu
7. Enter 00000000 (8 Zero's) into the Network Code
8. Phone Unlocked

Panasonic X400 Unlock

Models: X400,
LED Sequence: **Blinking, On, Off, Off**
Phone: Powered Off
Connector Jack Plug (labelled T191)

1. Switch on the Superclip and select Panasonic X60
2. Connect the phone (Powered Off)
3. Power on the phone while pressing # and * screen stays white
4. Press "Enter" button.
5. LED 2 flashes then 3 then all, and then returns to mode indication.
6. Phone Unlocked

Sendo

Sendo Unlock

Models:	M550, M551
LED Sequence:	Blinking, On, Off, On
Phone:	Powered On
Connector	PS2, Sendo Connectors

1. Switch on the Superclip and select **Sendo**
2. Insure the handset is powered OFF
3. Connect the handset to the Superclip
4. Press "Enter" button on the Superclip
5. Power on the handset.
6. Wait for all 4 Superclip's LEDs to flash.
7. Phone Unlocked.

Motorola

Motorola V Series Unlocking

Models: V300, V400, V500, V525, V600
LED Sequence: **Blinking, Blinking, Off, Off**
Phone: Powered On
Connector: USB Cable Motorola V-Series Connector

1. Switch on the Superclip and select **Motorola V Series**
2. Connect the phone (Powered ON) and hold the cable in the phone hard.
3. Press "Enter" button.
4. The phone will reset twice and all 4 lights will come on.
5. Phone unlocked.

Motorola V80, V220 unlocking

Models: V80, V220
LED Sequence: **Blinking, Blinking, Off, On**
Phone: Powered On
Connector: USB Cable (mini USB end)

1. Switch on the Superclip and select **Motorola V80, V20**
2. Connect the phone to the clip.
3. Then power on in test mode by holding down the # key and the * key at the same time then power on phone.
4. On V80 it must display transfer mode to do a successful unlock.
5. Press the "Enter" button.
6. Wait for Superclip's LEDs to reach **Blink, Blink, Blink, Blink**
7. Phone unlocked

Tips & Tricks

Some later SW version V220 require the charge to be connected before it will unlock successfully.

VK-Mobile

VK Mobile Unlock

Models: VK207, VK207i, VK530, VK570
LED Sequence: **Blinking, Blinking, On, Off**
Phone: Powered On
Connector PS2, VK207 connector (looks like Samsung A300)

1. Switch the Superclip on and select VK207i
2. Ensure the Target phone is Powered On with foreign SIM in (one the phone does not accept).
3. Connect to the Superclip.
4. Press the "Enter" button.
5. Clip will flash briefly , Phone Unlocked.
6. Restart phone

Tips & Tricks

If LEDs 1 & 4 blink while LED 2 stays on, this indicates communication error, open up the VK connector if Pins 1 and 2 are soldered together then cut pin 2.

The following are not available in the latest update and you must install the stated firmware on your clip to use

Benq E61

Removed from V8.00 Centurion, you must install firmware version 7.90 in order to use this

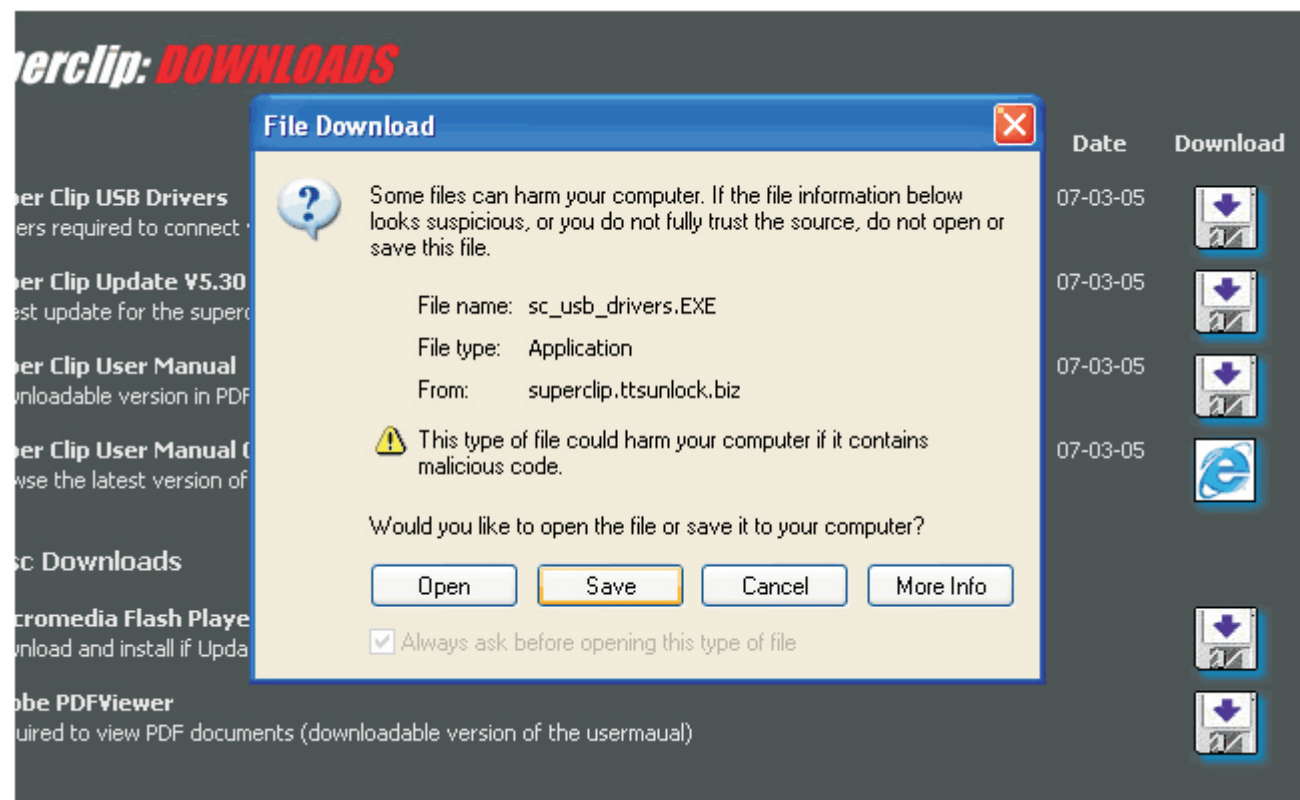
Models: Benq-Siemens E61
Clip Firmware V7.80 or V7.90
LED Sequence: **Blink, Blink, Blink, Off**
Phone: Powered Off
Connector PS2, 02-X2, M300 type

THIS PHONE WAS REMOVED IN UPDATE V8.30; TO UNLOCK IT YOU MUST DOWNGRADE YOUR CLIP TO V7.80 OR V7.90!

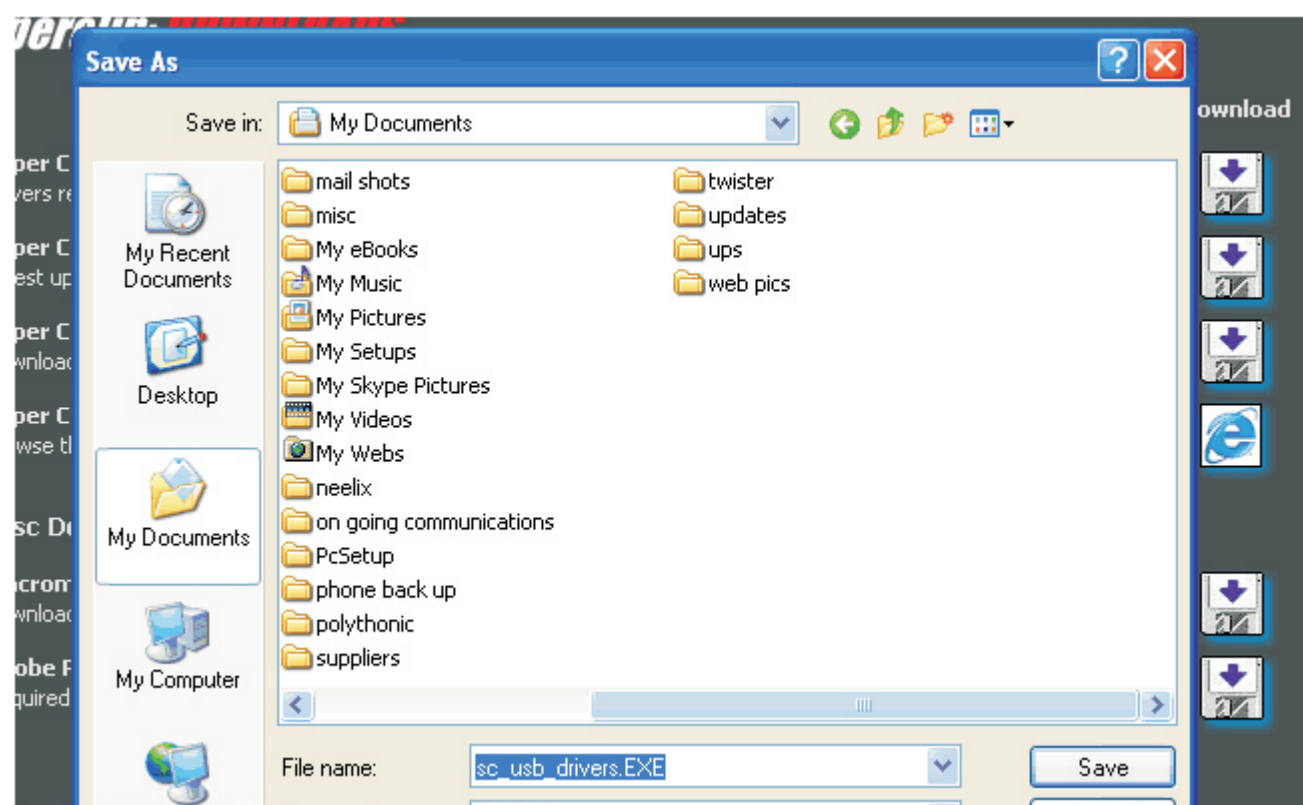
1. Switch on the Superclip and select **BenQ**
2. Connect up the phone. (No SIM, Powered OFF)
3. Press "Enter" button.
4. Press "Power" button and hold on phone.
5. Wait for Superclip's LEDs to return to mode indication.
6. Phone unlocked.

1. Superclip USB drivers.
2. Superclip Update Software.

When presented with the "File Download" dialogue box click on save.

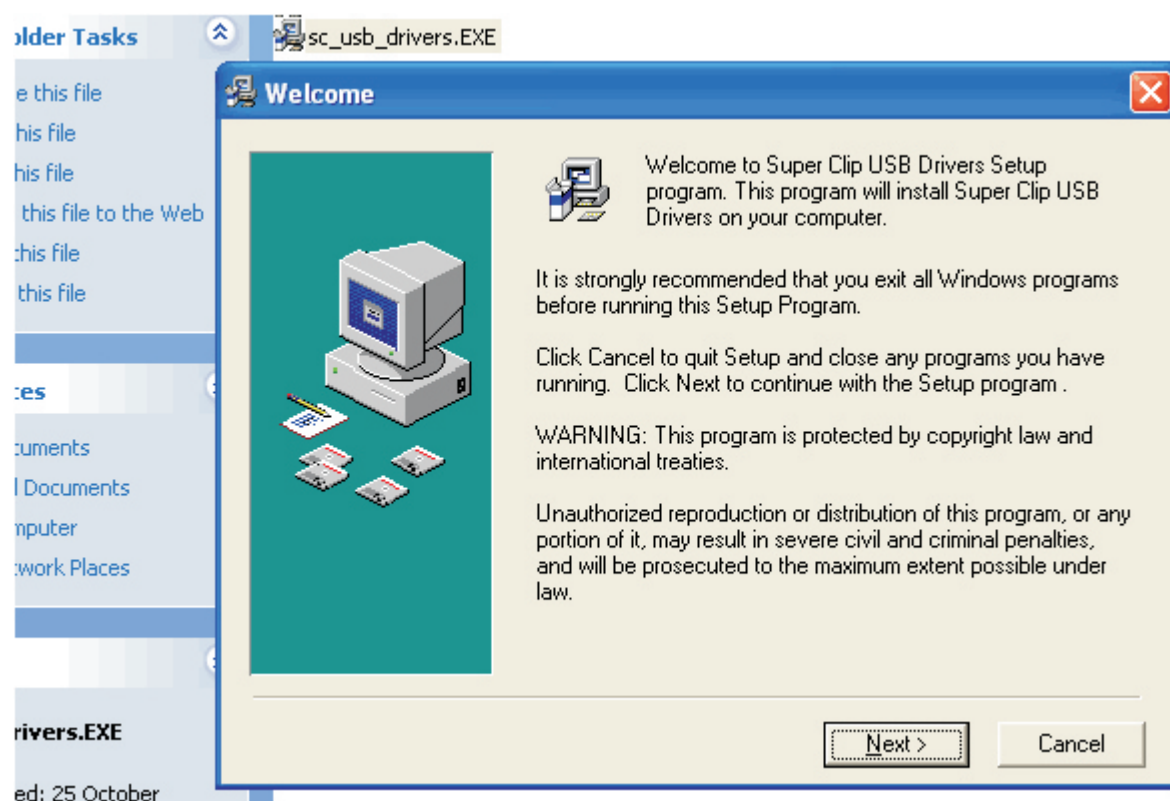


Save the file to your machine, the “My Documents” folder is an ideal place, it will make the file easy to access.



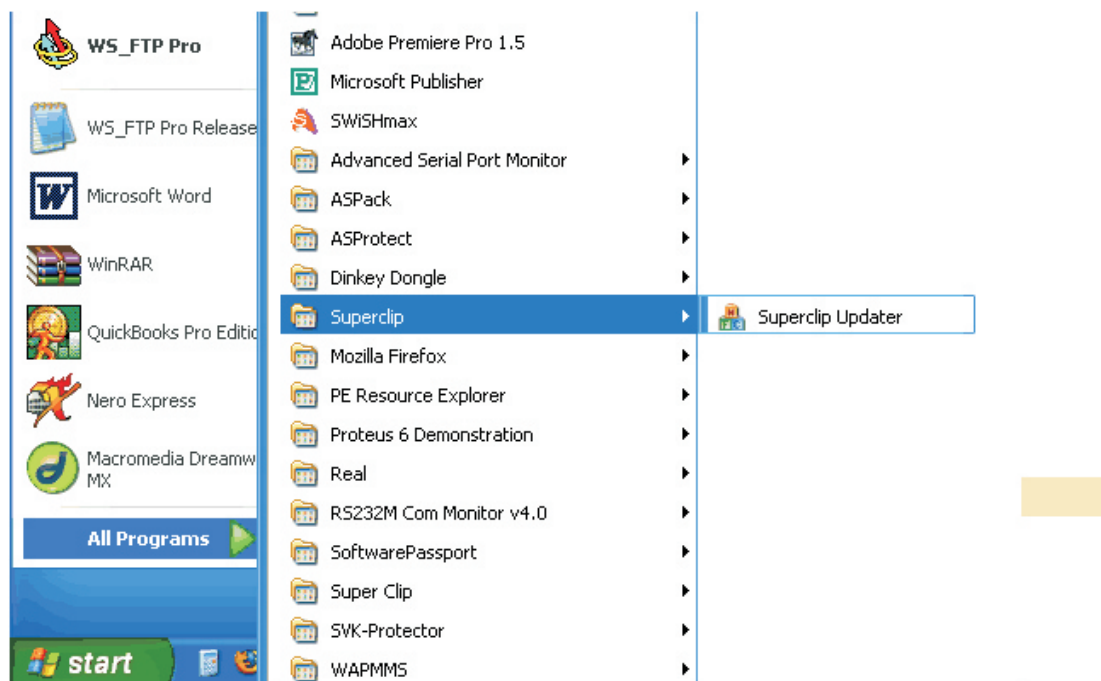
Repeat the above for the “Superclip Update”

Now that we have download the install programs we need to install the SW.



Double click on “sc_usb_drivers.EXE” (the superclip USB driver installation program you just downloaded) follow the prompts, until you see the dialogue window telling you the installation has been successful, now click on “Finish”, you have now installed the USB drivers.

Now do the same for the Superclip update, double click on "sc_updater.EXE" and follow the same procedure, until you see the dialogue window telling you the installation has been successful, now click on "Finish", you have now installed the Superclip updater.



The updater SW should appear, if the updater buttons do not change when you place your mouse over them you will need to download and install the "macromedia flash player" from the [downloads page](#).



Then for the correct procedure to update your clip follow the relevant set of instructions below !

If you are connecting your superclip to your PC for the first time, see the following about windows installing your superclip. Installing Your Superclip.

Installing The SuperClip On Your PC

After the software is installed, windows will need to install your superclip as a new USB device the first time it is connected.

When you get to the stage of connecting the clip to your PC follow this guide.
(you will only need to do this once, the first time you ever connect the superclip to your PC, or to a new PC)

Connecting Centurion Clip to Your PC Via USB

If your Centurion Clip has no software in it (lights will flash up and down randomly)

To connect your super clip to your pc:

- 1) Plug in 9V power
- 2) Plug in USB lead
- 3) LED 1 should be lit

If your Centurion Clip has software in it (steady Lit LEDs)

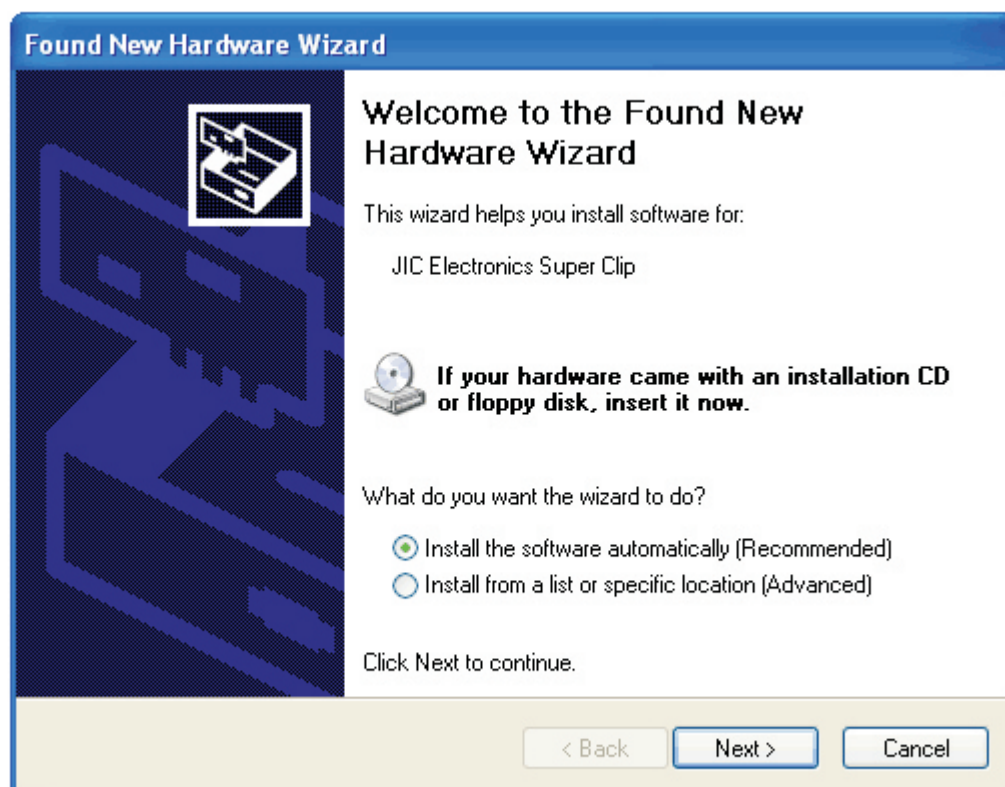
To connect your super clip to your pc:

- 1) Plug in USB lead
- 2) Plug in 9V power within 2 seconds of plugging in the USB lead
- 3) LED 1 should be lit

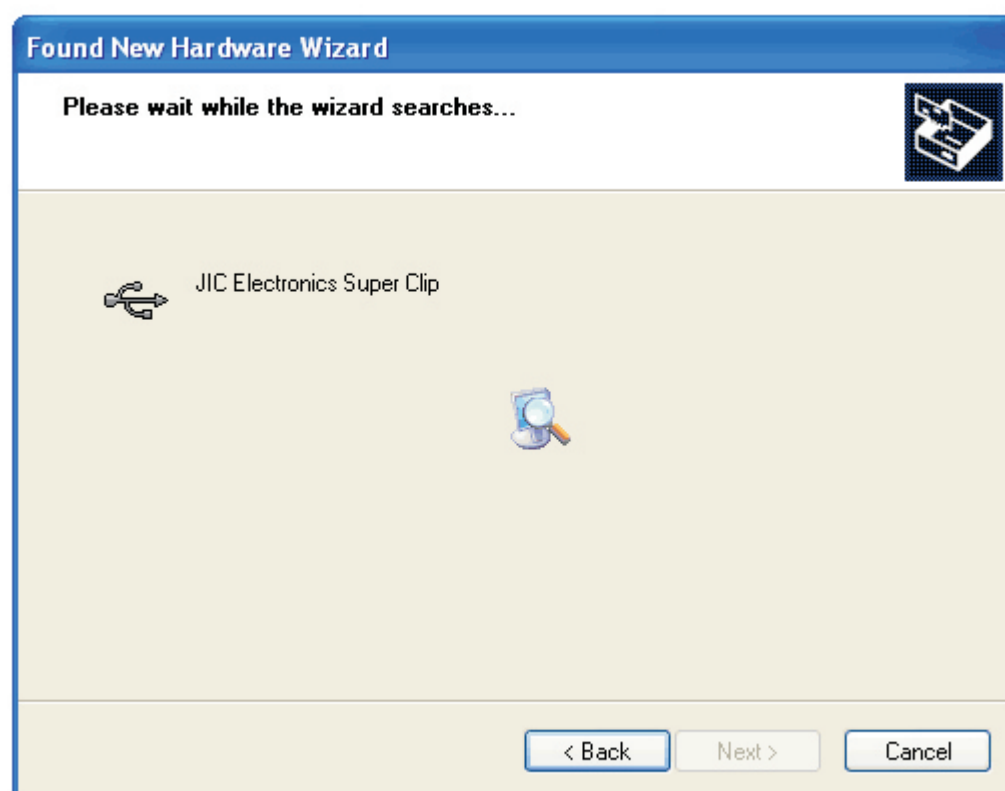
1. When the Superclip is connected to your PC and the enter button is pressed, windows detects the new hardware (if this fails with Centurion clip try inserting the usb cable, then adding the 9v power to the clip in the next 1 to 2 seconds)



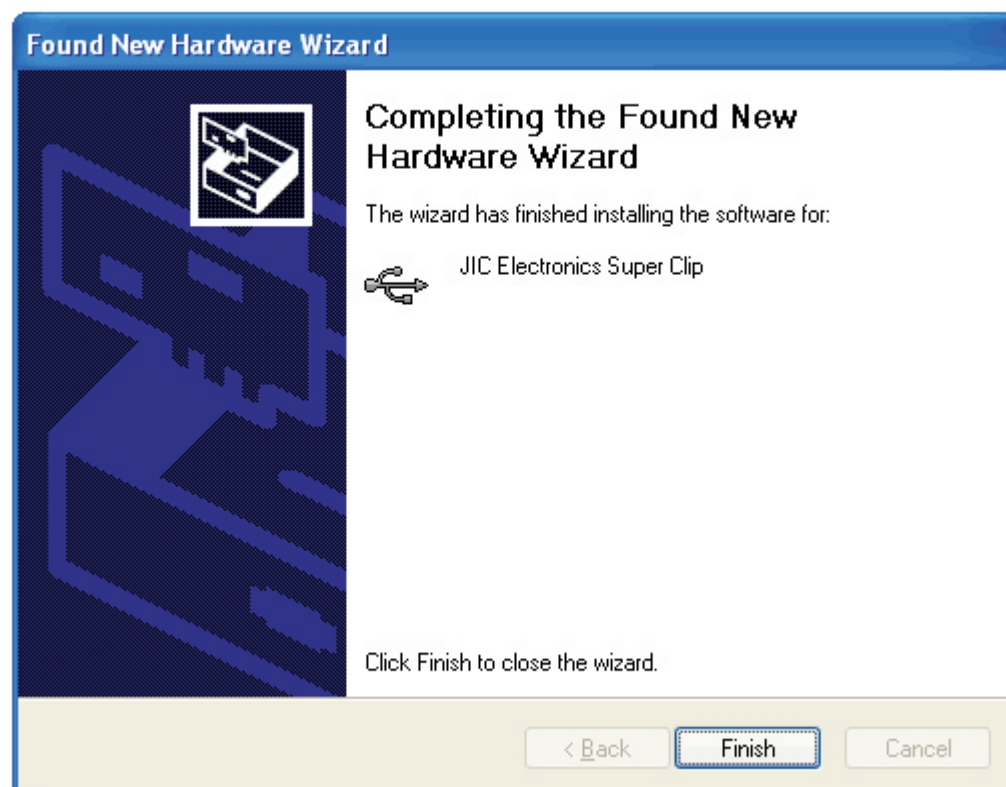
2. A "New Hardware Wizard" dialogue box will appear, leave the selection "Install the software automatically" selected, Click on Next.



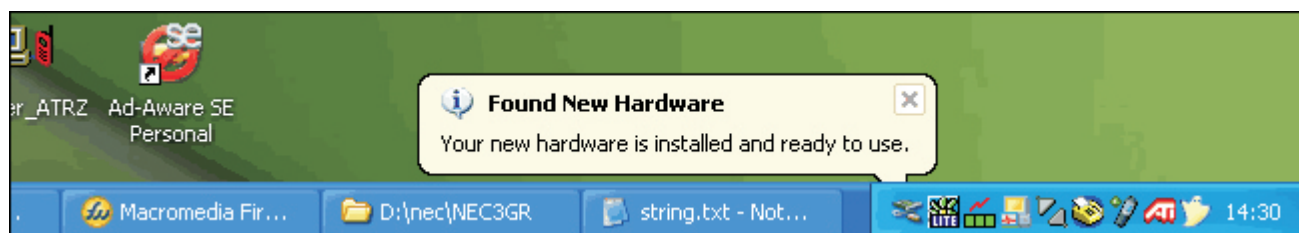
3. Now windows will search for the USB drivers you installed and install the new superclip hardware



4. When the wizard has successfully installed the new hardware click on "Finish".



5. Windows will confirm your Superclip has been installed and is ready for use



Updating A Blank Clip (flashing LEDs)

You must install USB Drivers 1st.

A blank clip has all 4 LEDs flashing in a fast sequence. Use the following sequence for updating a Blank Clip !!!!

1. Power up the clip by pressing the "Select" button
2. Start the Updater SW (if it is not running already) on your PC.
3. Connect the superclip to your PC, using a Type A-Male to Type A-Male USB cable.
4. All LEDs will change and LED 1 will remain on.
5. The message on the Updater SW will change from "Please Connect The Super Clip" to "Super Clip Connected"
6. Click on the Updater Software the "Enter" button
7. The Updater SW will now update the Clip.



8. Once the clip is updated press and hold "Select" button for about 1 second to turn the superclip off
9. Disconnect from USB cable
10. The clip is now updated

Connecting Centurion Clip Via USB

If your Centurion Clip has no software in it (lights will flash up and down randomly)

To connect your super clip to your pc:

- 1) Plug in 9V power
- 2) Plug in USB lead
- 3) LED 1 should be lit

Updating A Loaded Superclip *(steady lit LEDs)*

This is a superclip that has already previously had an update installed.

1. Make sure you have installed the latest Superclip updater installed, you can download this from www.superclip.co.uk
2. Power up the clip by pressing the "Select" button
3. Start the Updater SW (if it is not running already) on your PC
4. Connect the superclip to your PC, using a Type A-Male to Type A-Male USB cable.
5. Press and hold the "select" and "enter" buttons on the superclip, LED 1, should remain lit, LEDs 2, 3 & 4 should cycle up and down.
6. Release the buttons
7. Now press the enter button on the clip, LED 1 should now remain lit.
8. The message on the Updater SW will change from "Please Connect The Super Clip" to "Super Clip Connected"
9. Click on the Updater Software the "Enter" button
10. The Updater SW will now update the Clip.



11. Once the clip is updated press and hold "Select" button for about 1 second to turn the superclip off
12. Disconnect from USB cable
13. The clip is now updated

Connecting Centurion Clip Via USB

If your Super Clip has software in it (steady Lit LEDs)
To connect your super clip to your pc:

- 1) Plug in USB lead
- 2) Plug in 9V power within 2 seconds of plugging in the USB lead
- 3) LED 1 should be lit

Updating the Super Clip Firmware

Some updates require the firmware in the super clip to be updated.

You will be advised if this is necessary when the update is released.

1. Install the New update.
2. Run the newly installed Updater.
3. Connect the Clip to computer with the USB A to A Cable.
4. Press enter on the clip and LED 1 should light.
5. Now Click on the enter button on the Software.
6. After the clip has updated.

**THE NEXT PART IS VERY IMPORTANT AND MUST BE DONE RIGHT
THIS WILL ONLY HAPPEN ON THE FIRST UPDATE
UPDATING AGAIN WILL NOT UPDATE THE FIRMWARE AGAIN**

7. Turn off the Clip by Holding the SELECT button for 1 second then releasing it.
8. Now disconnect the clip from the USB Cable.
9. Once Disconnected Press the SELECT Button LED 1 Should Flash.
10. Press the SELECT Button Once more and now LED 4 Should Flash.
11. Now Press Enter. (Firmware is now updated)

Activating Optional Updates (USA Option)

Notes about V6.10

The latest Update (v7.60 includes the USA functions but in order to use them they must be activated)

Download and Install The latest Update For your Superclip if you have not done so already, Install the latest update for your super clip and update the firmware if required (how to update firmware guide [here](#))

Activating USA unlock functions

1. Then have V4.00 updater running and the clip disconnect from the computer
2. Press the SELECT button on the clip until you see BLINK, BLINK, BLINK, ON
3. Then connect the clip to the computer and press ENTER on the clip.
4. LED 1 and 3 will now be lit.
5. Now click Enter on the software.
6. The Updater will now read the EID from the clip and display it in the updating window and also at bottom of
7. Clip Software.

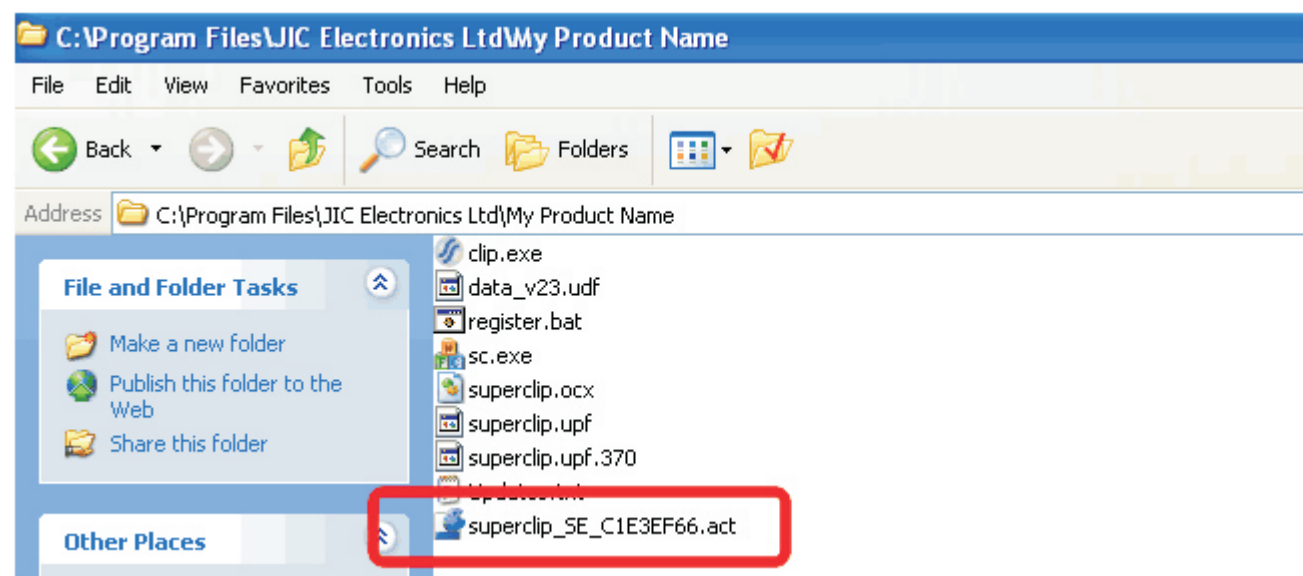


Then email the EID code at the bottom of the software (Highlighted in RED) to your supplier.

Uploading the activation file.

Your supplier will then send you an activation file, save this file into the superclip folder on your PC

Continued on next page



1. Then have the latest updater running and the clip disconnect from the computer
2. Press the SELECT button on the clip until you see BLINK, BLINK, BLINK, ON
3. Then connect the clip to the computer and press ENTER.
4. LED 1 and 3 will now be lit.
5. Now click Enter on the software and the software will now update the clip.



Clip Updated And Activated!!!

Note: You can not read the EID again once you have uploaded the activation file, this is normal and correct!!!

CLIP MODE	LED-1	LED-2	LED-3	LED-4
Nokia DCT3 Unlock	Off	Off	Off	On
Nokia DCT4 Unlock	Off	Off	On	Off
Nokia DCT4 Security Code Reset	Off	Off	On	On
Total LG 2G, including KG800 Chocolate	Off	On	On	Off
LG 2G USA	Off	On	On	On
Samsung A1XX, A3XX, A4XX Unlock	On	Off	Off	On
Samsung Q/V/SXXX, P4XX, E710 Unlock	On	Off	On	On
Samsung E700, E800, SGHx600 Unlock	On	On	Off	On
Samsung C100 Unlock	On	On	On	On
Samsung E720	Blinking	Off	Off	Off
Samsung E330	Off	On	Off	On
Samsung Z105, Z107	Blinking	Blinking	Off	Off
Sharp GX-1, GX-10, GX10i Unlock	Blinking	Off	Off	On
Sharp GX20 Unlock	Blinking	Off	On	Off
Sharp GX30 Unlock	Blinking	Off	On	On
Panasonic X60 Unlock	Blinking	On	Off	Off
Sharp GX15, GX17, GX25, GX29	Blinking	Blinking	Off	Off
Sendo Unlock	Blinking	On	Off	On
Motorola P2k (V60, V66, V70 & Ti280 etc.) Unlock	Blinking	On	On	On
Motorola V300, V400, V500, V525, V600	Blinking	blinking	Off	Off
Motorola V220, V80 Unlock	Blinking	Blinking	Off	On
VK207, VK530	Blinking	Blinking	On	Off
NEC-3g	Blinking	Blinking	On	On
Requires LG Shine, Prada & Samsung E250 Activation!				
LG shine, KG110, KG120, KG200, KG210, KG220, KG225, KG300	On	Off	Off	Off
LG Prada, KE820, KE260, KE600, KE608, K608N, KE770, KE800.	Off	On	Off	On
Samsung E250	On	Off	On	Off
BB5 unlock – COMING SOON!				
Requires USA Activation!				
MOTOROLA IDEN	Blinking	On	On	Off
Pantech C300	Blinking	Blinking	Blinking	On
Removed from V8.00 and later (install v7.90 to use the following)				
Benq-Siemens E61	Blinking	Blinking	Blinking	Off
Total Sony Ericsson CID36	Off	On	Off	On
Lobster, 485, 575, 544	On	Off	Off	Off
LG8110, 8120, 8130, 8180, 8330	On	Off	On	Off