



US005815652A

United States Patent [19] Ote et al.

[11] Patent Number: **5,815,652**
[45] Date of Patent: **Sep. 29, 1998**

[54] COMPUTER MANAGEMENT SYSTEM

[75] Inventors: **Ichiro Ote**, Chigasaki; **Hiroshi Furukawa**, Yokohama; **Hiroaki Washimi**, Chigasaki; **Yuichi Kobayashi**, Kawasaki; **Shigeru Sakurai**, Zama; **Teiji Karasaki**; **Yuji Miyagawa**, both of Owariasahi; **Masami Murai**, Hadano; **Tsunehiro Tobita**, Yokohama, all of Japan

[73] Assignee: **Hitachi, Ltd.**, Tokyo, Japan

[21] Appl. No.: **655,482**

[22] Filed: **May 30, 1996**

[30] Foreign Application Priority Data

May 31, 1995 [JP] Japan 7-133177

- [51] Int. Cl.⁶ **G06F 11/30**
- [52] U.S. Cl. **395/183.07; 395/200.59**
- [58] Field of Search 395/183.07, 183.01, 395/183.15, 184.01, 182.2, 200.53, 200.54; 364/280.3

[56] References Cited

U.S. PATENT DOCUMENTS

- 5,204,955 4/1993 Kagei et al. 395/183.01
- 5,257,384 10/1993 Farrond et al. 395/725
- 5,272,382 12/1993 Heald et al. 307/66
- 5,283,905 2/1994 Saadeh et al. 395/750
- 5,285,198 2/1994 Asahina 340/825.16
- 5,309,563 5/1994 Farrond et al. 395/200
- 5,367,635 11/1994 Baver et al. 395/200
- 5,367,667 11/1994 Wahlquist et al. 395/183.07
- 5,455,932 10/1995 Major et al. 395/184.01
- 5,465,349 11/1995 Geronimi et al. 395/184.01
- 5,511,191 4/1996 de Leeuw van Weenen et al. 395/184.01
- 5,515,418 5/1996 Yamaguchi et al. 370/216
- 5,577,112 11/1996 Cambray et al. 379/216

- 5,592,675 1/1997 Itoh et al. 395/750
- 5,596,628 1/1997 Klein 379/93
- 5,600,788 2/1997 Lofgren et al. 395/183.07
- 5,603,038 2/1997 Crump et al. 395/750
- 5,636,341 6/1997 Matsushita et al. 395/183.01

OTHER PUBLICATIONS

Transistor Technology Special, No. 9, CQ Publishing Co., pp. 36-39 and 42-45.

EISA Specification, Version 3.12, pp. 292-293.

Pentium Family User's Manual, vol. 1: Data Book, 1994, pp. 30-4 and 30-5.

Intel Networking, Networking Components (82595TX Ethernet), 1995, pp. 1-8 to 1-11.

Primary Examiner—Robert W. Beausoliel, Jr.

Assistant Examiner—Scott T. Baderman

Attorney, Agent, or Firm—Antonelli, Terry, Stout & Kraus, LLP

[57] ABSTRACT

A computer management system includes an agent connected to a computer to be managed for executing instructions on the computer to be managed, a service processor board having a processor independent from the computer to be managed and monitoring fault in the computer to be managed and controlling power of the computer to be managed, a manager for executing instructions on a management computer and conducting controls such as fault monitoring and power control through the agent over a network including a public line, and a service processor manager directly connected to the service processor for conducting remote power-on and receiving and diagnosing critical fault. The service processor and the service processor manager are provided with switching circuits for switching an asynchronous interface for remotely connecting to the computer to be managed and an asynchronous interface for directly connecting to a local processor of the service processor.

20 Claims, 23 Drawing Sheets

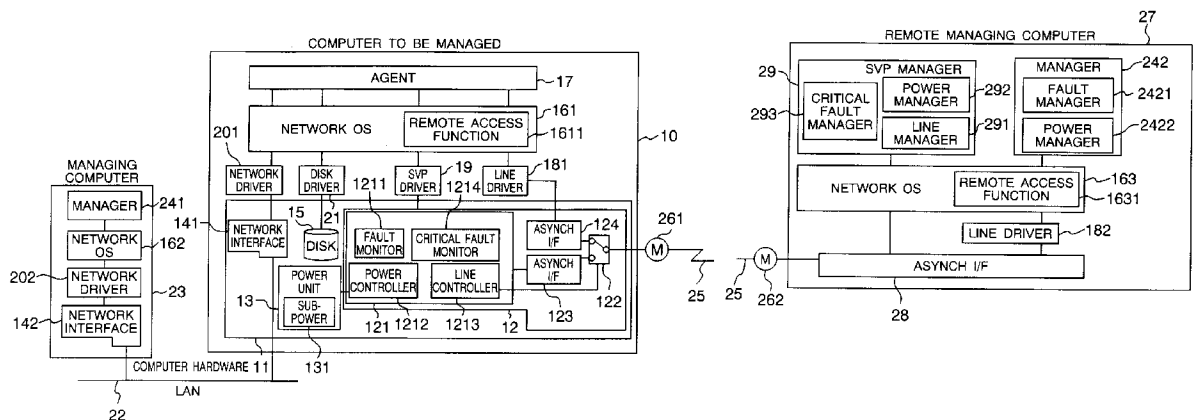


FIG. 1A

FIG. 1A FIG. 1B

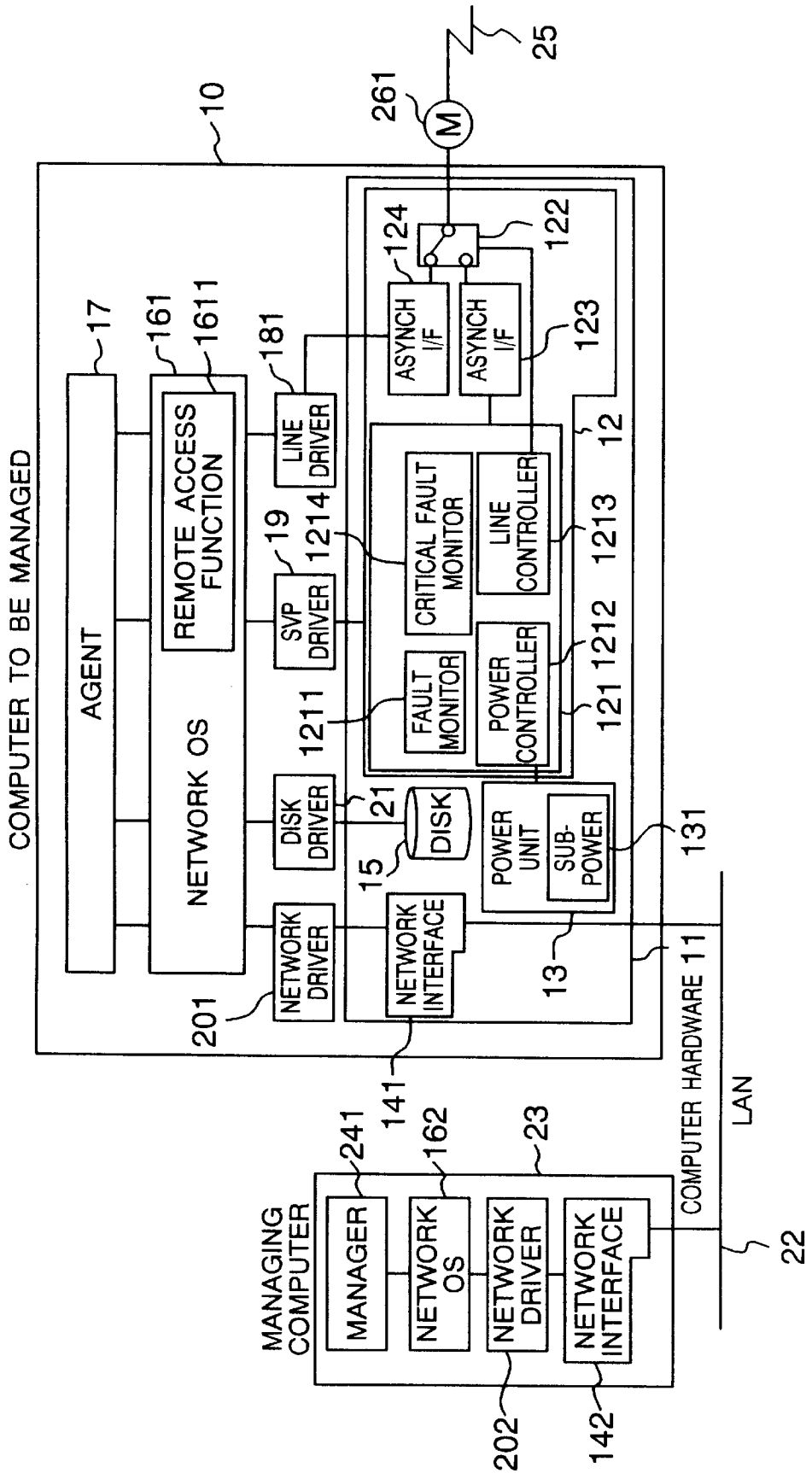


FIG. 1B

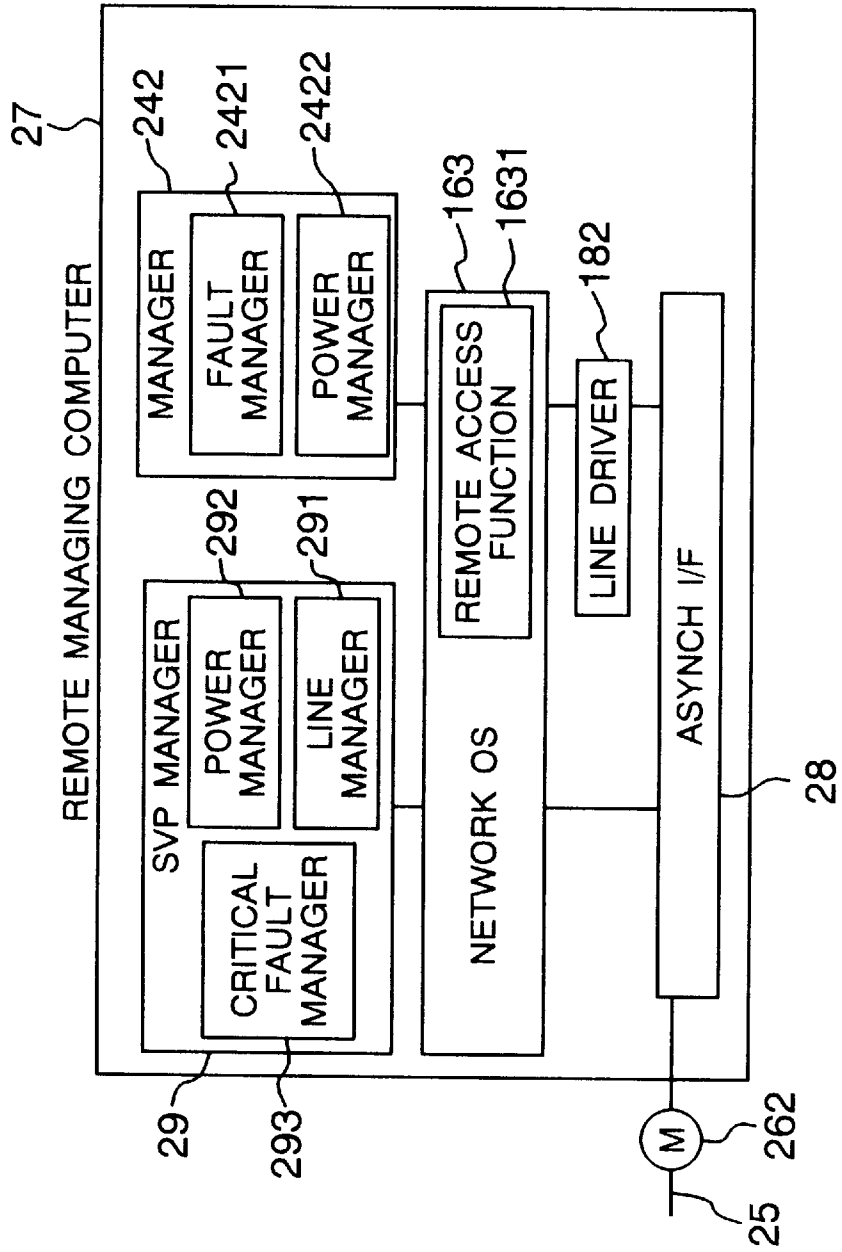


FIG. 2
PRIOR ART

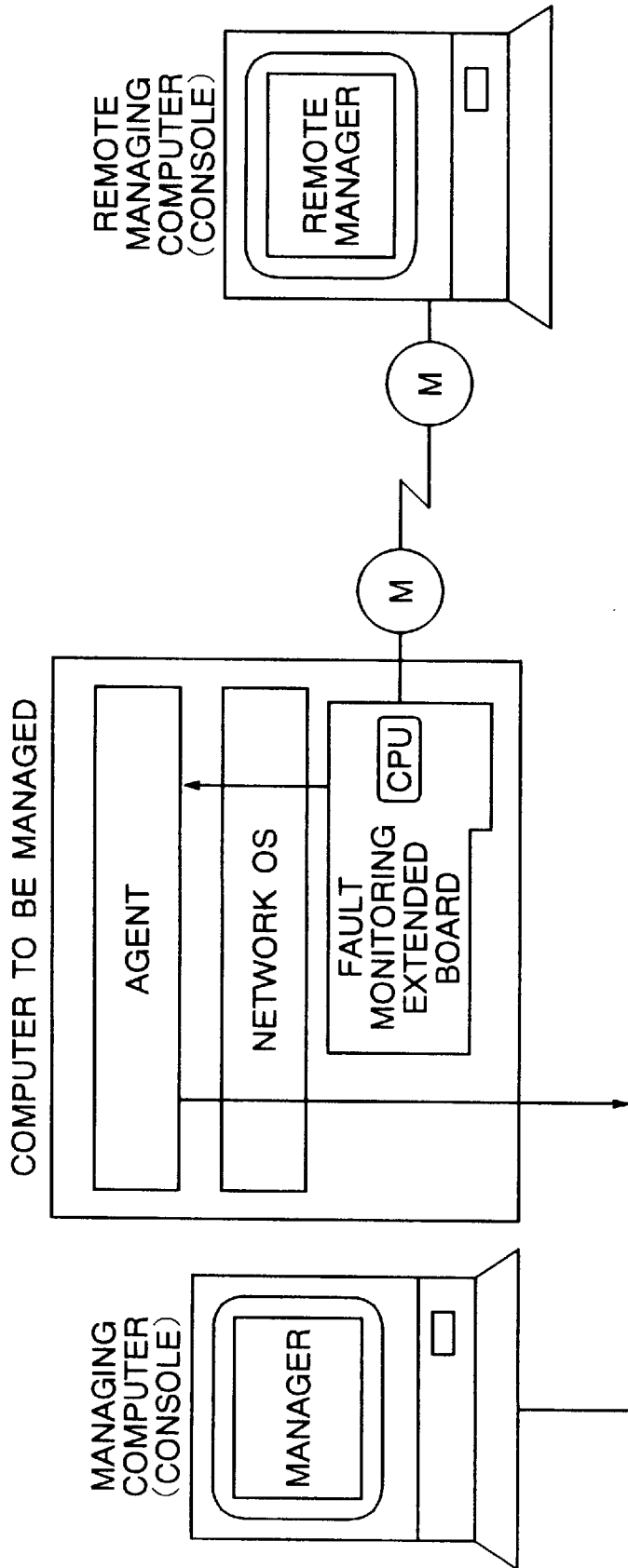


FIG. 3
PRIOR ART

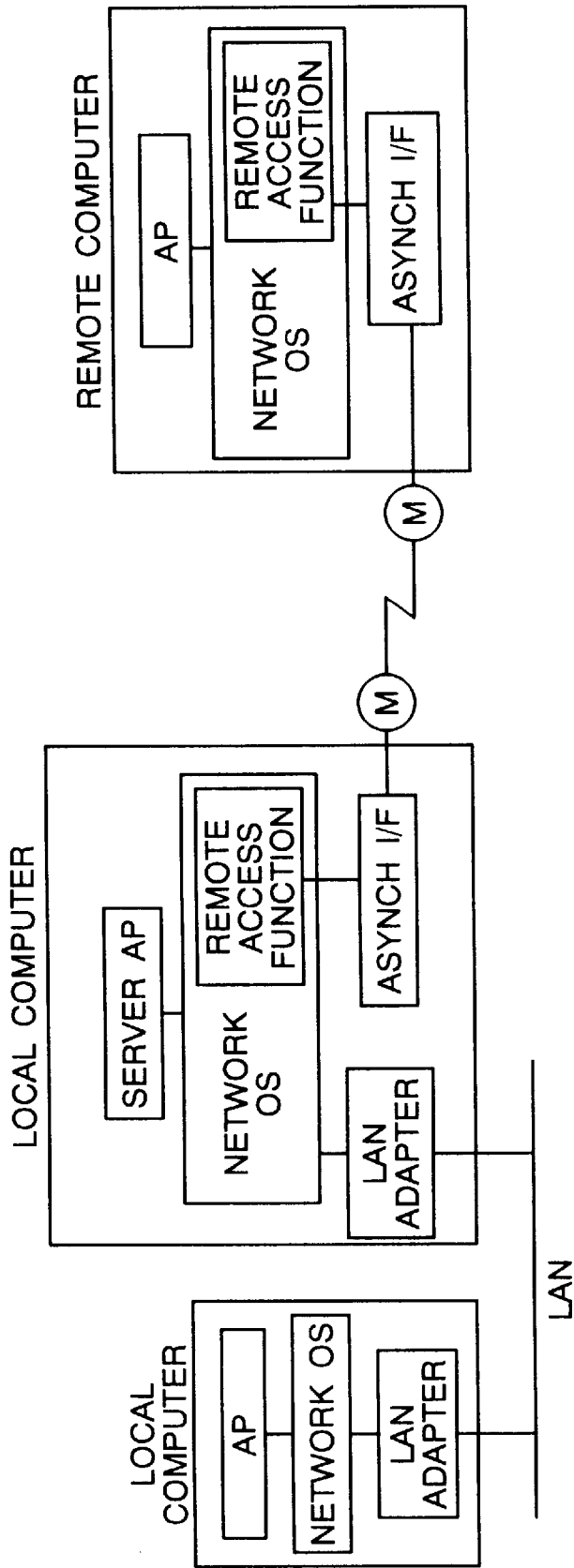


FIG. 4
PRIOR ART

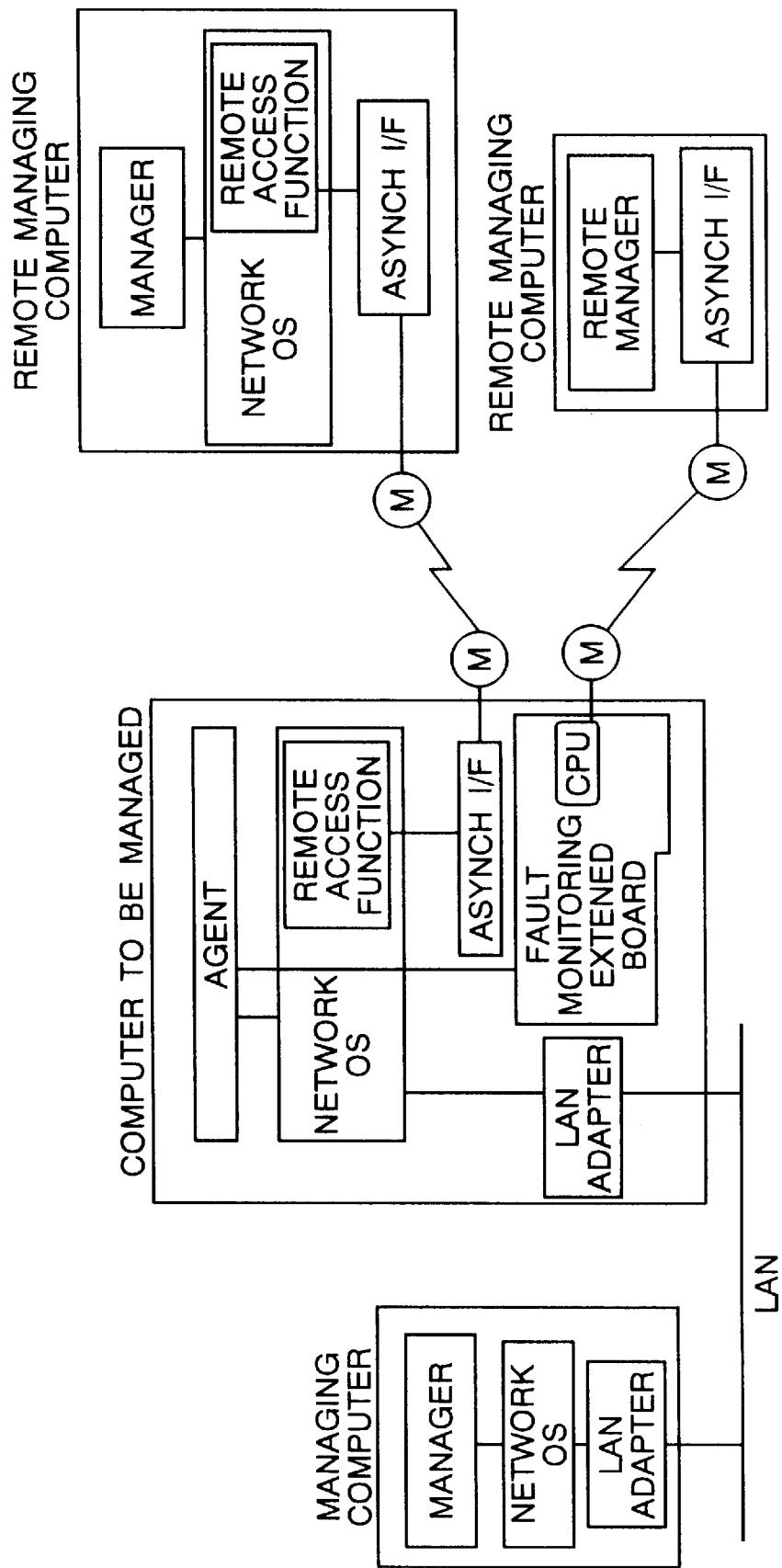


FIG. 5A

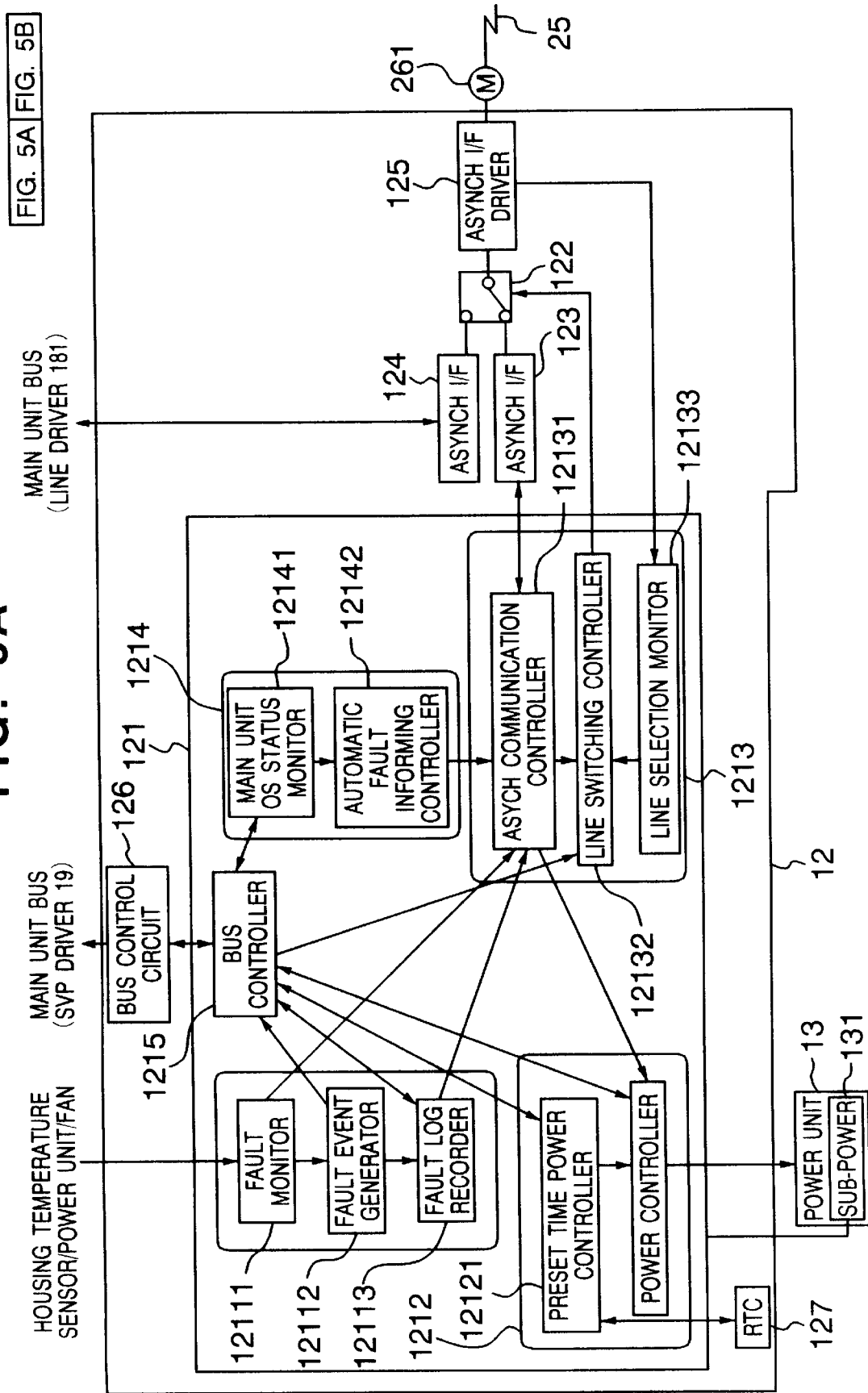


FIG. 5A FIG. 5B

FIG. 5B

REMOTE MANAGING COMPUTER

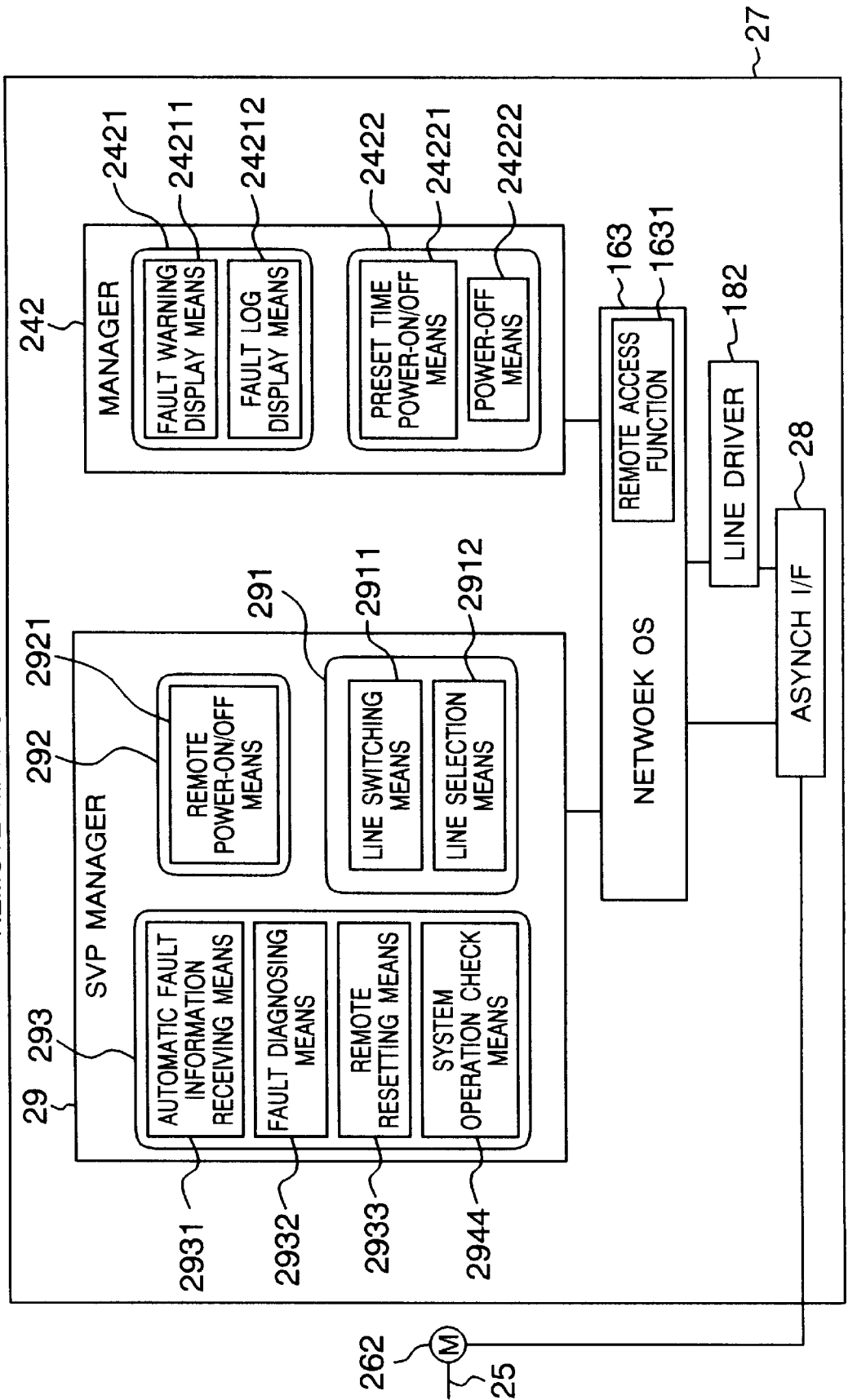


FIG. 6

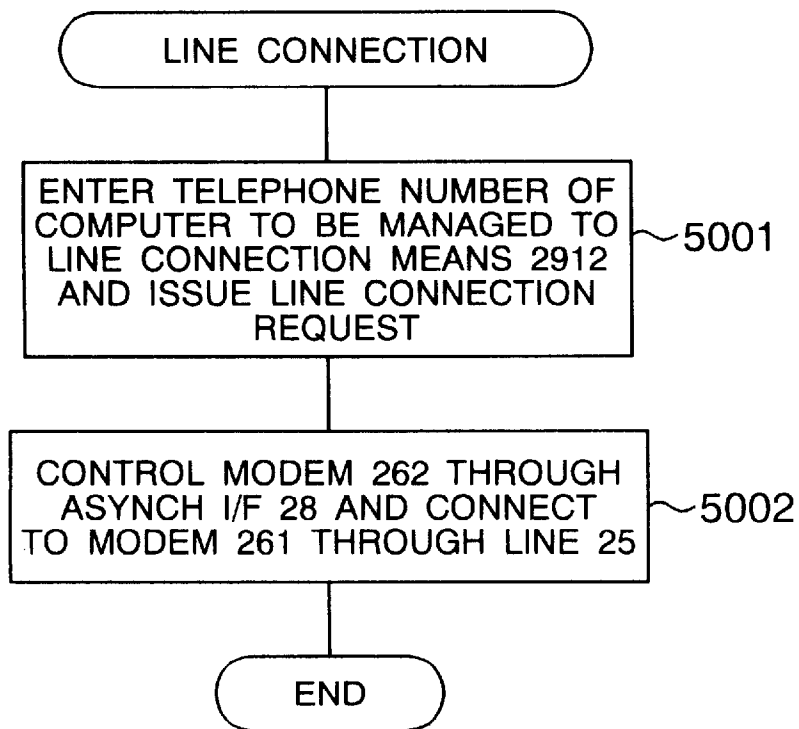


FIG. 7

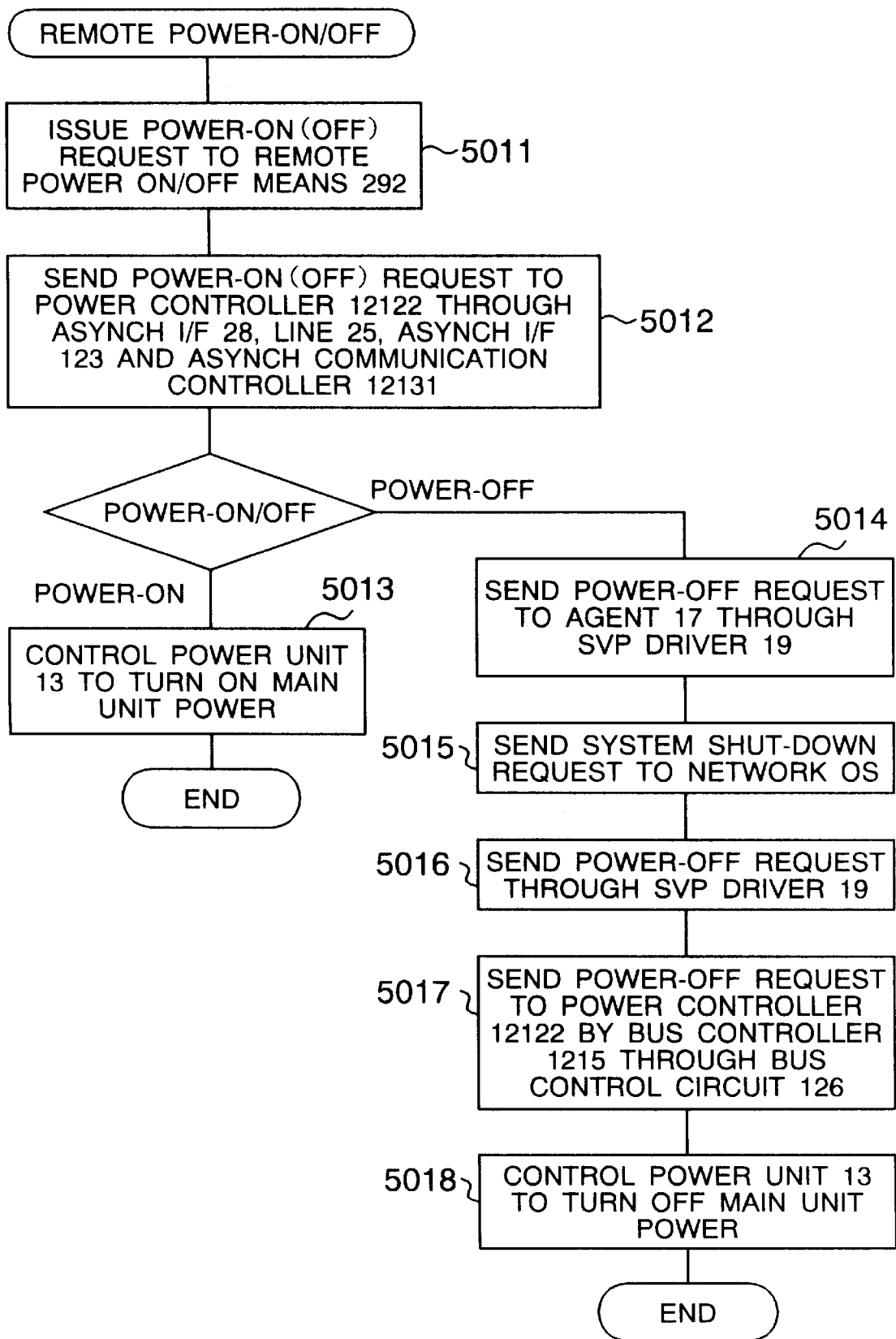


FIG. 8

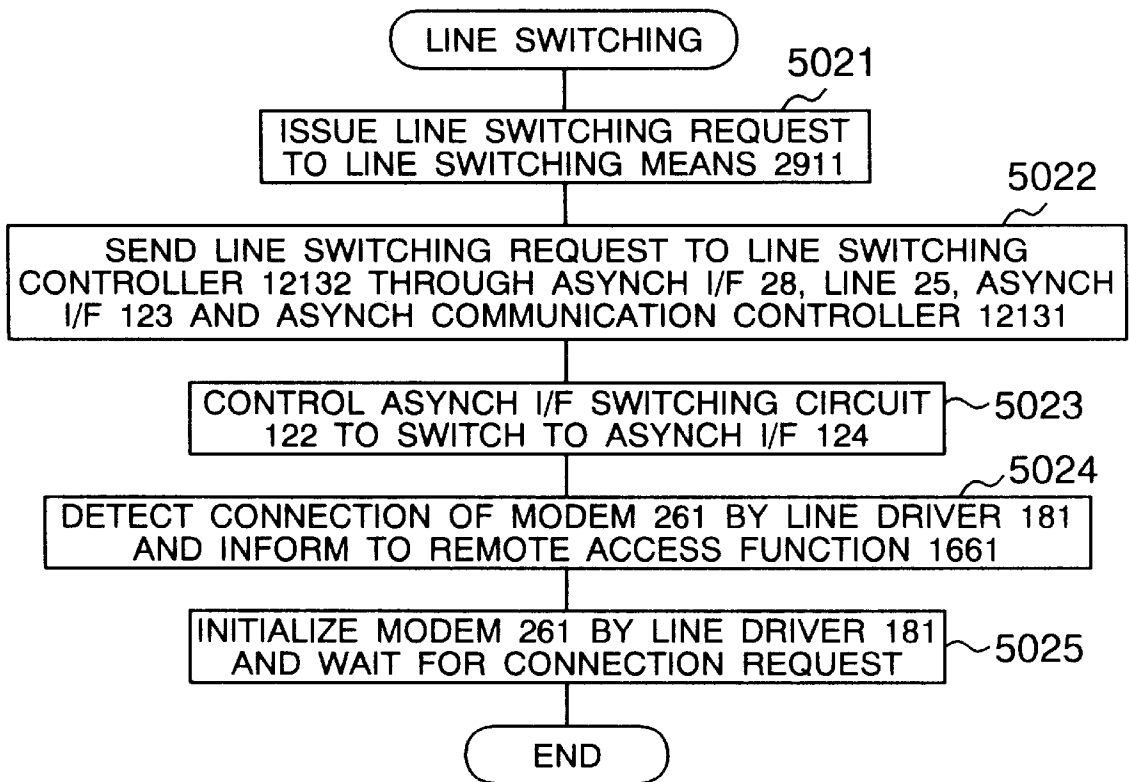


FIG. 9

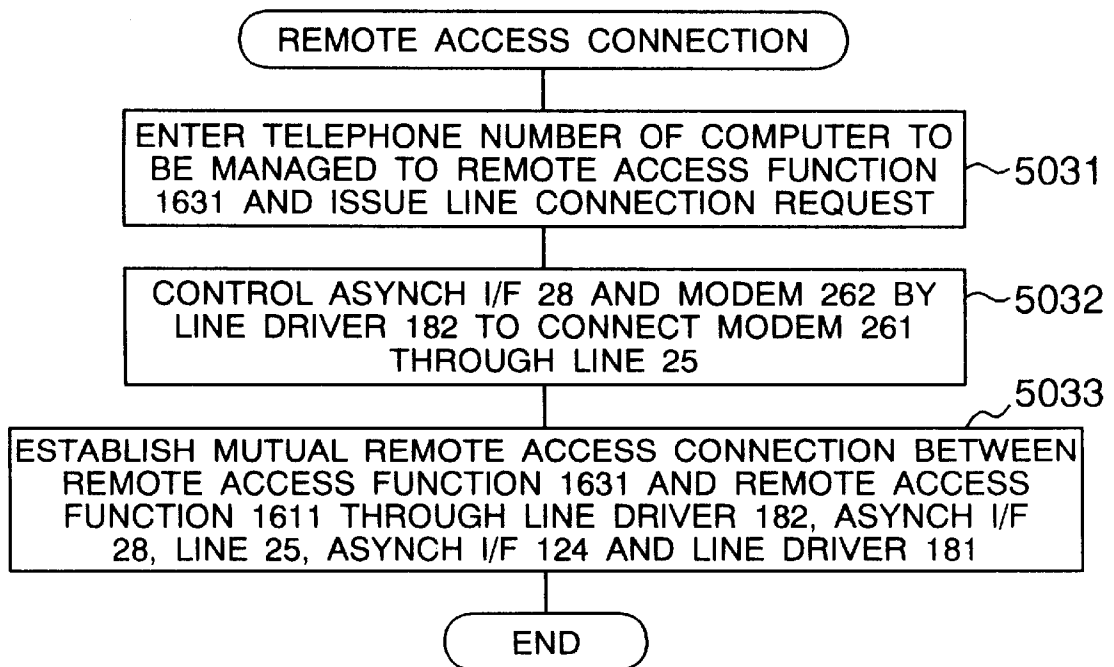


FIG. 10

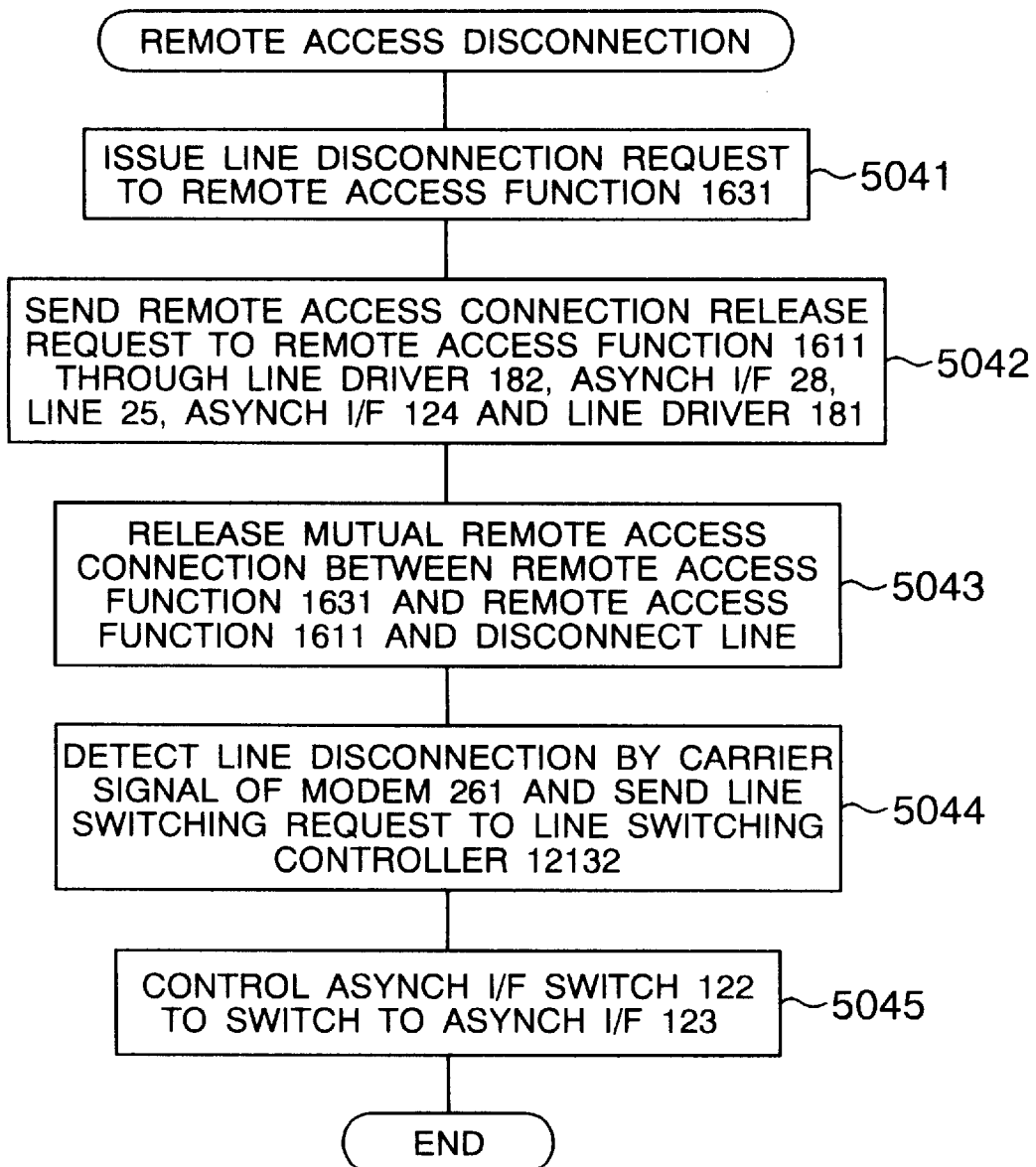


FIG. 11

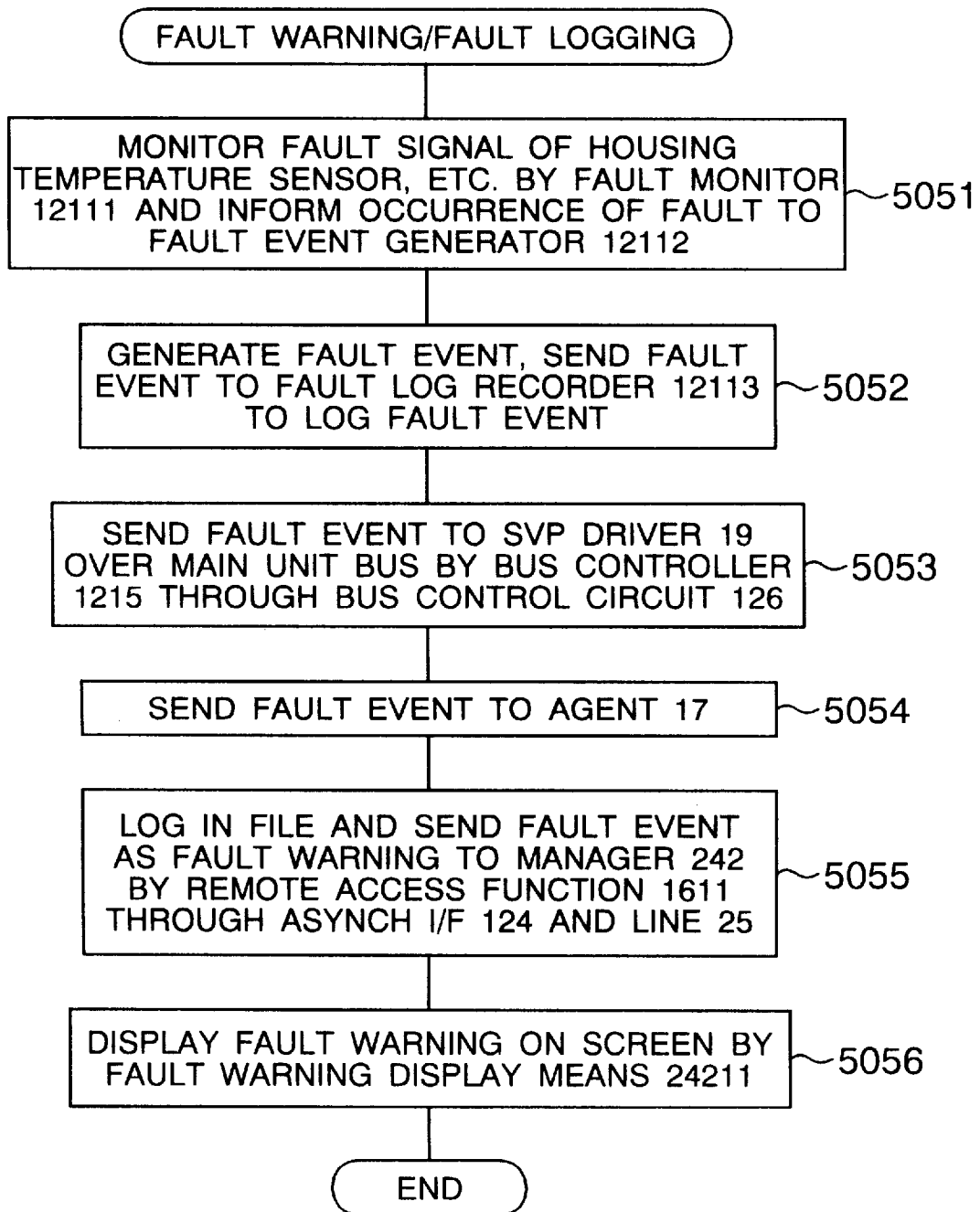


FIG. 12

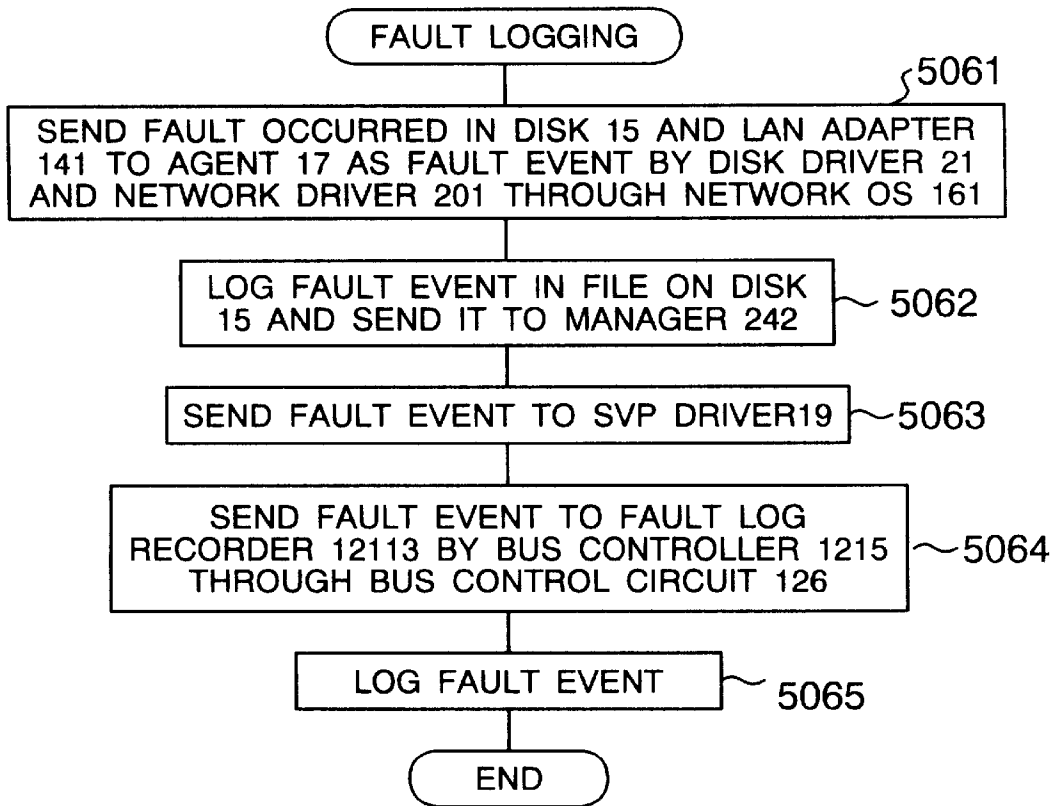


FIG. 13

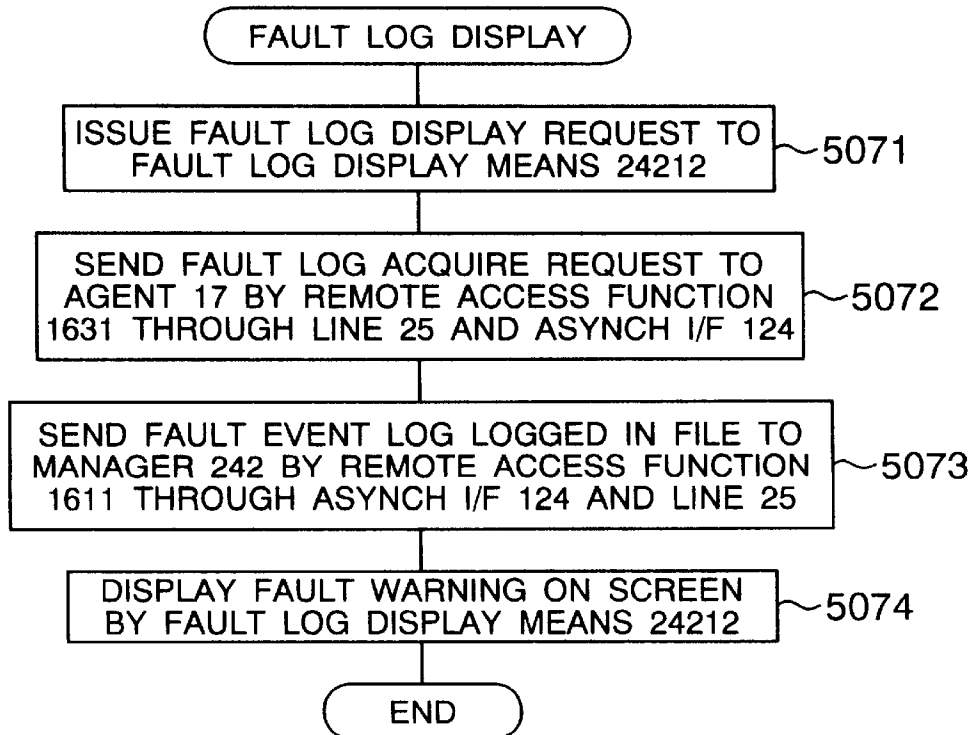


FIG. 14

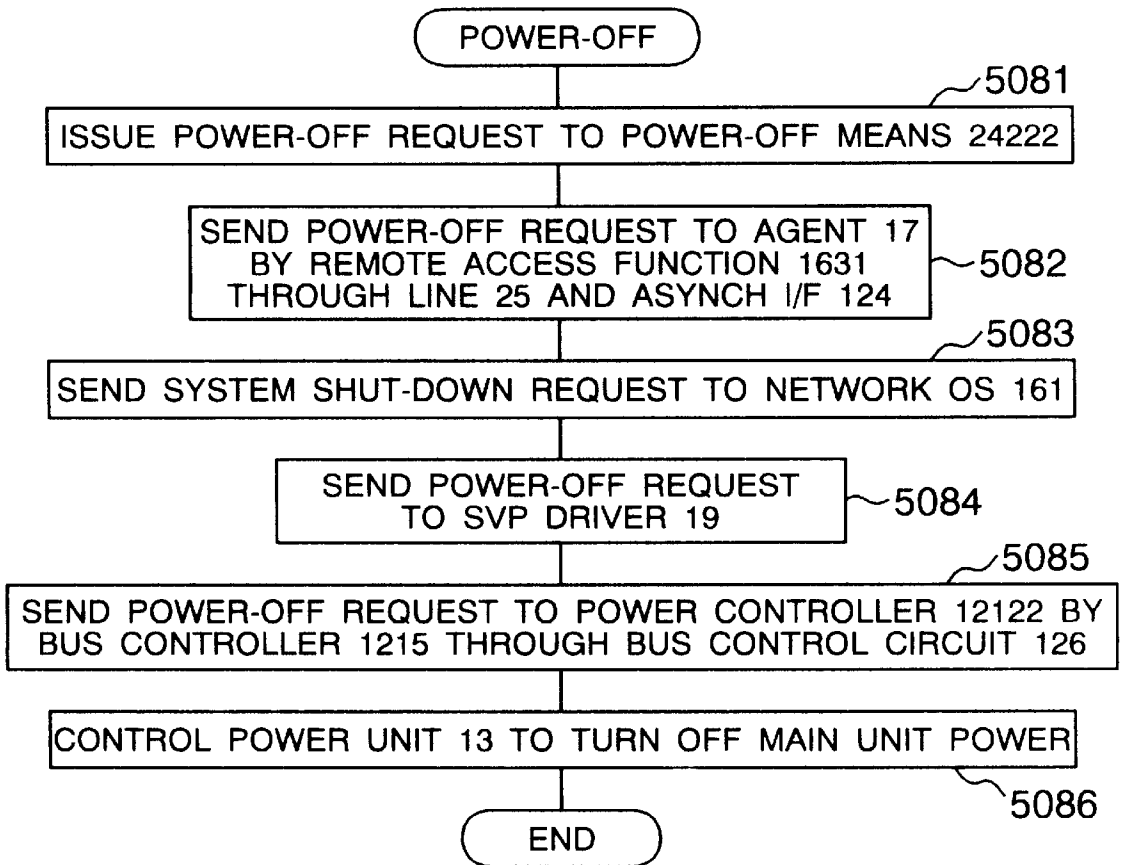


FIG. 15

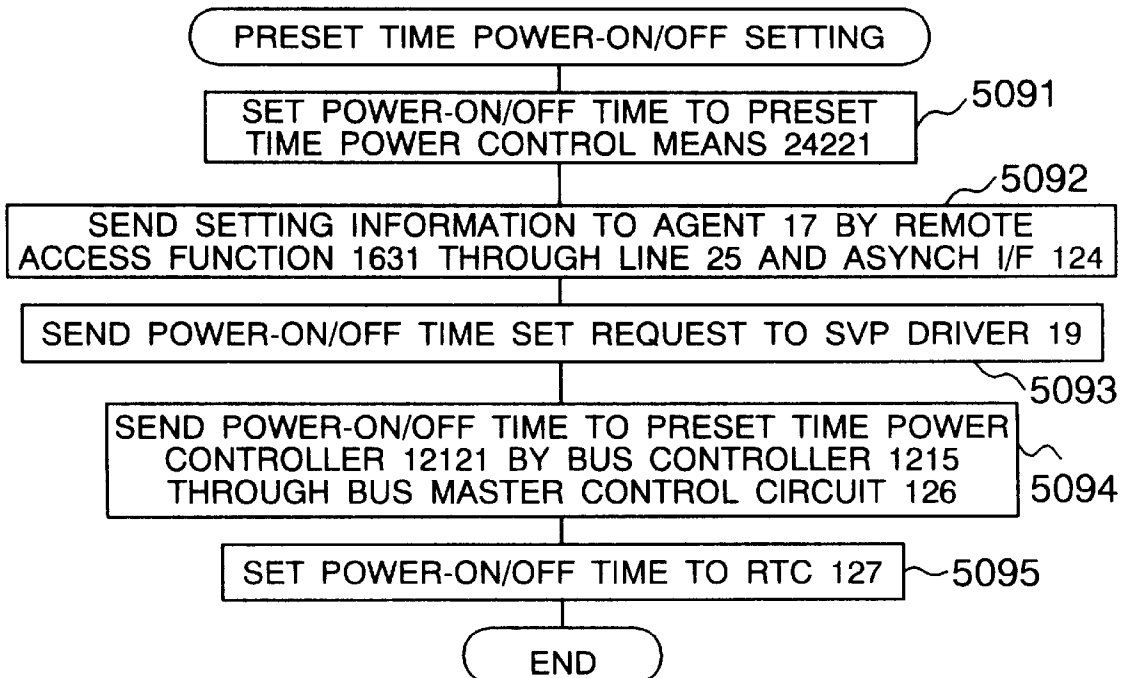


FIG. 16

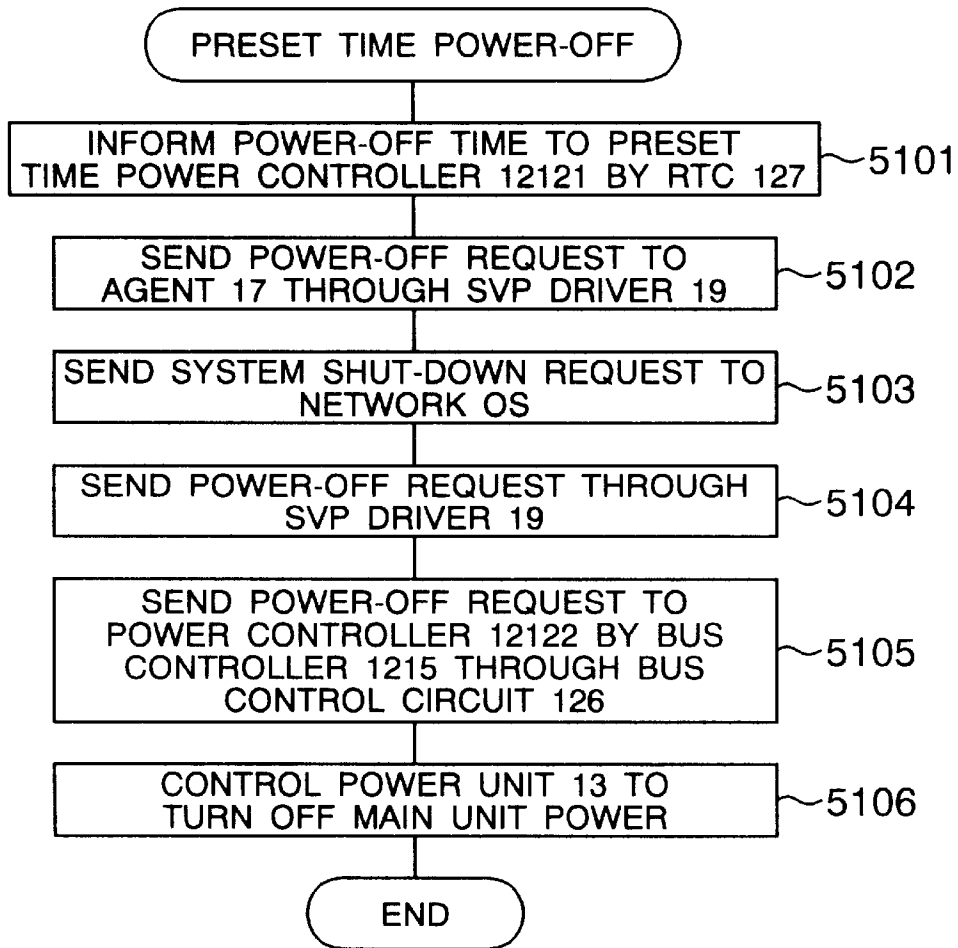


FIG. 17

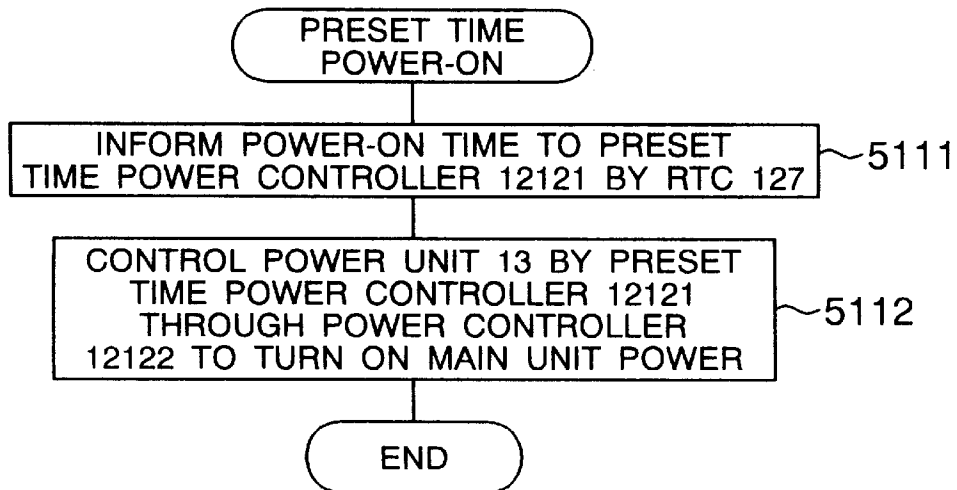


FIG. 18

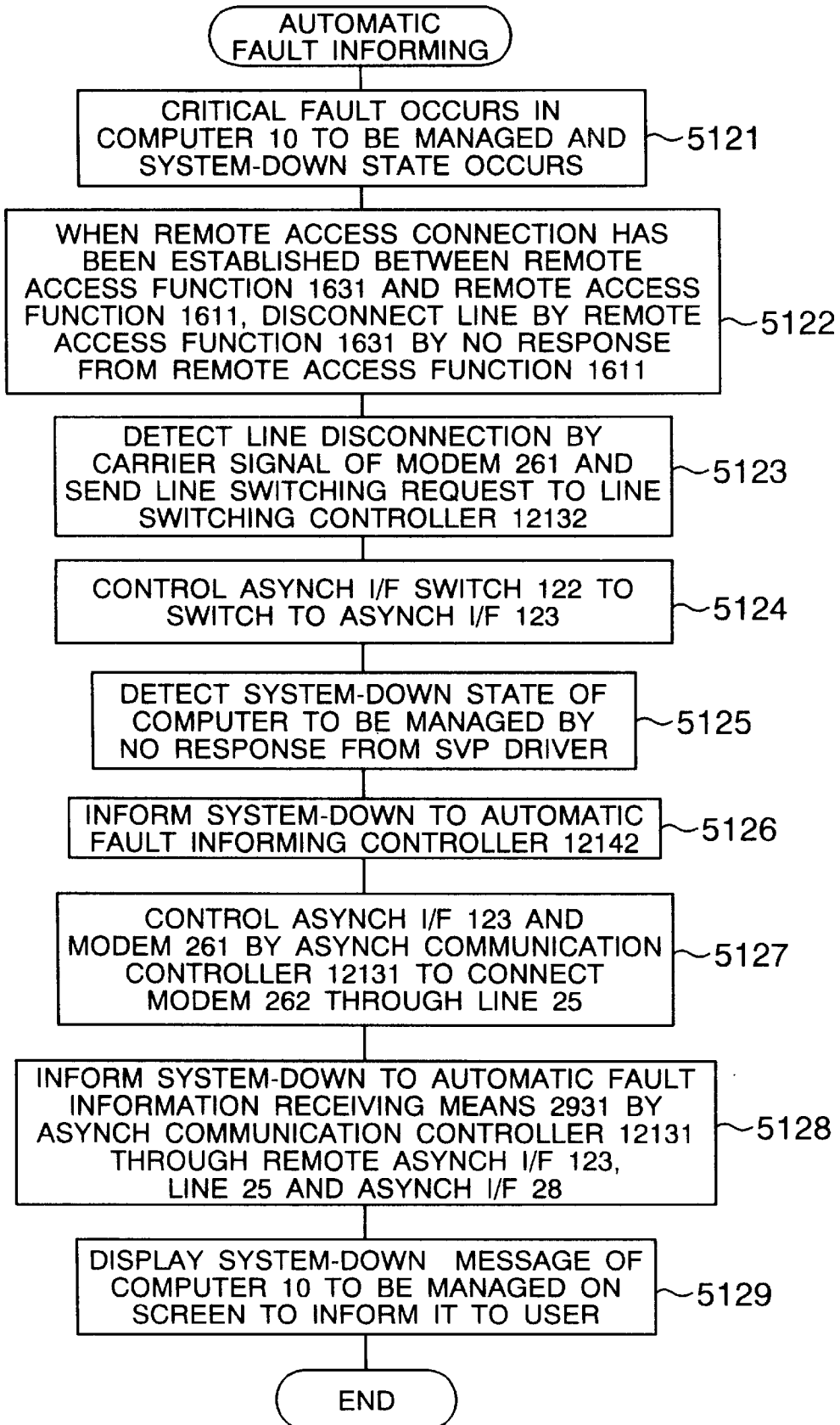


FIG. 19

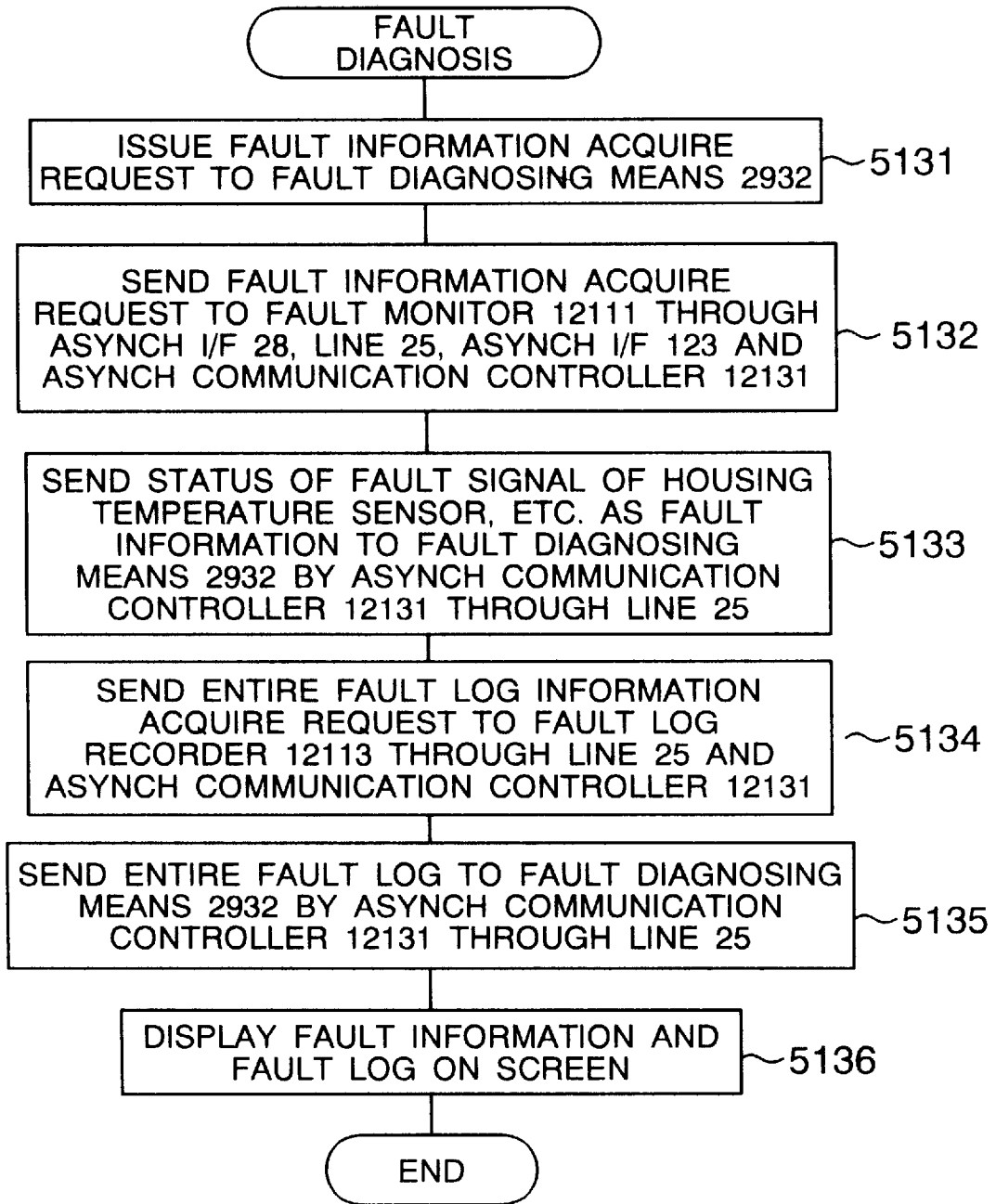


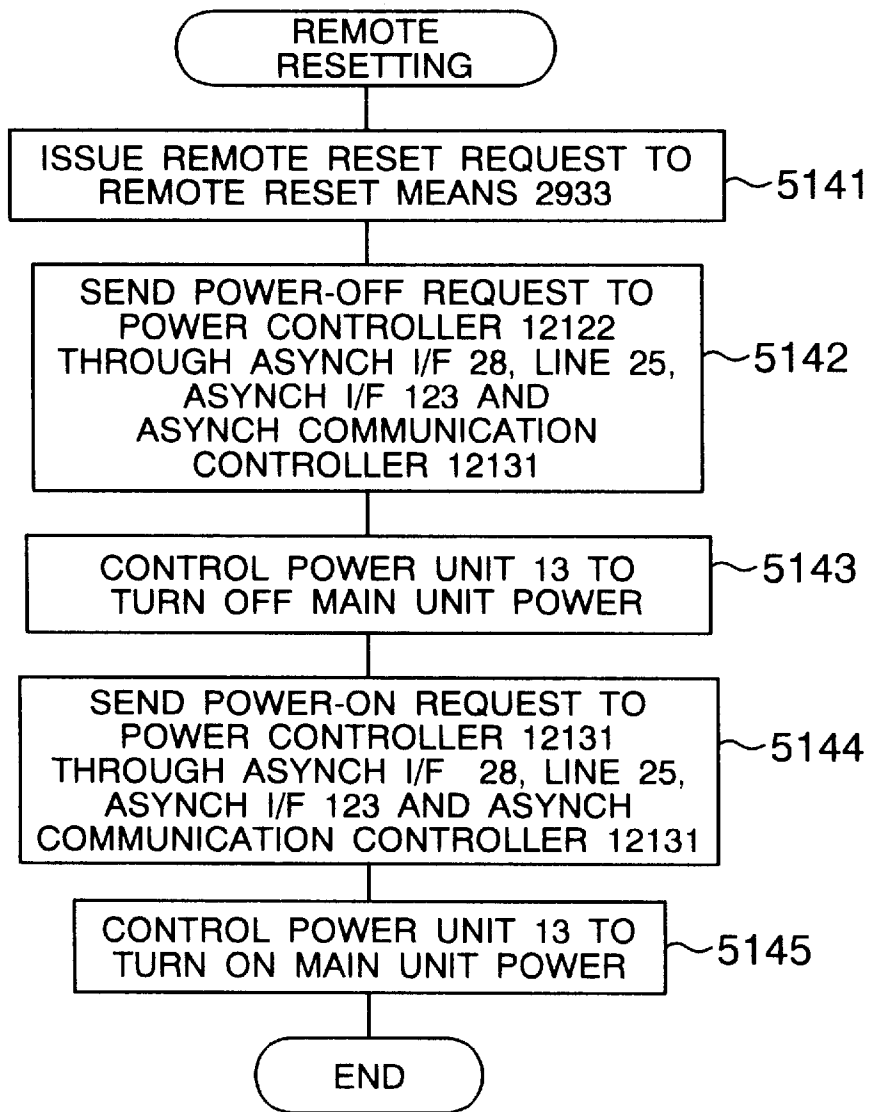
FIG. 20

FIG. 21

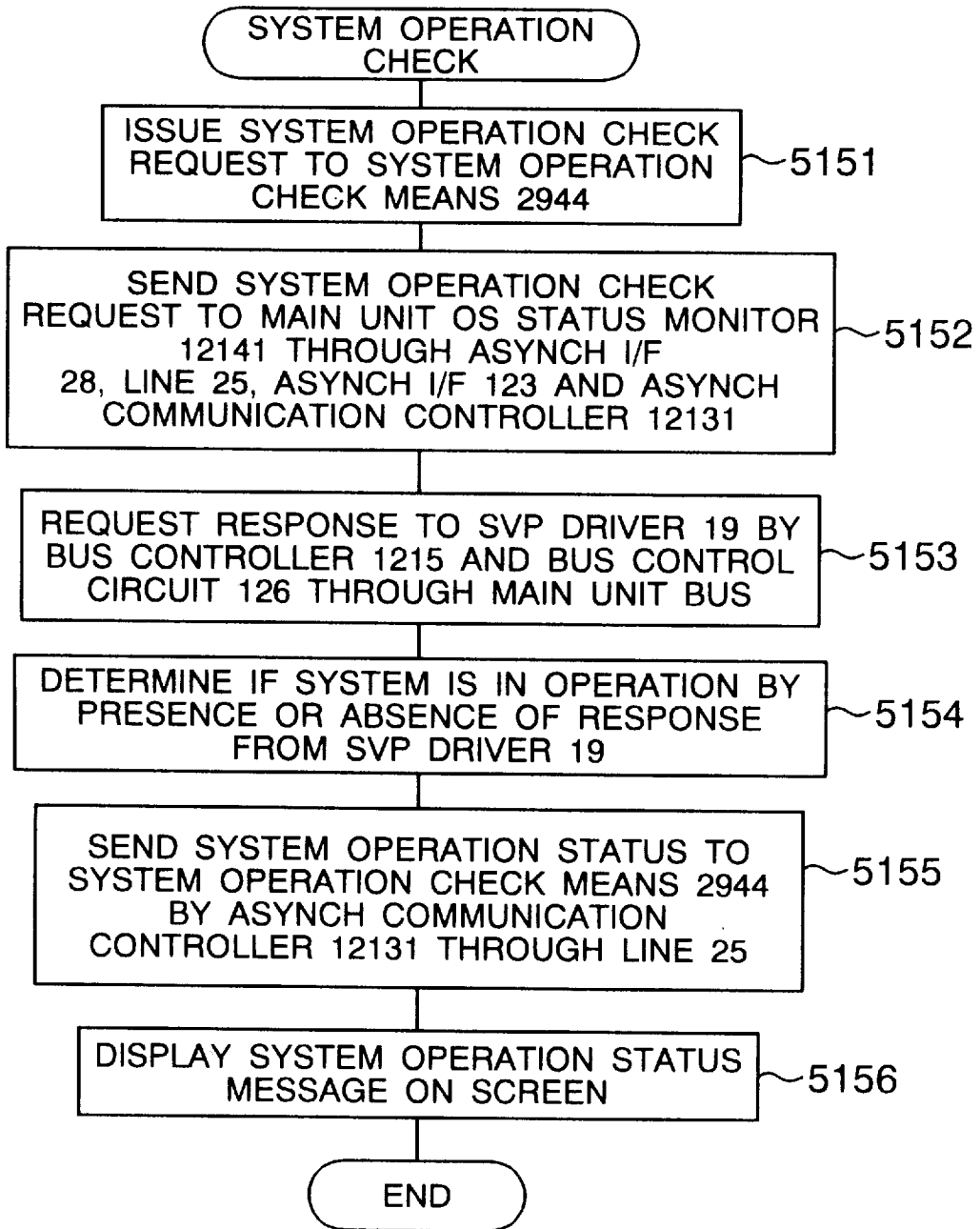


FIG. 22

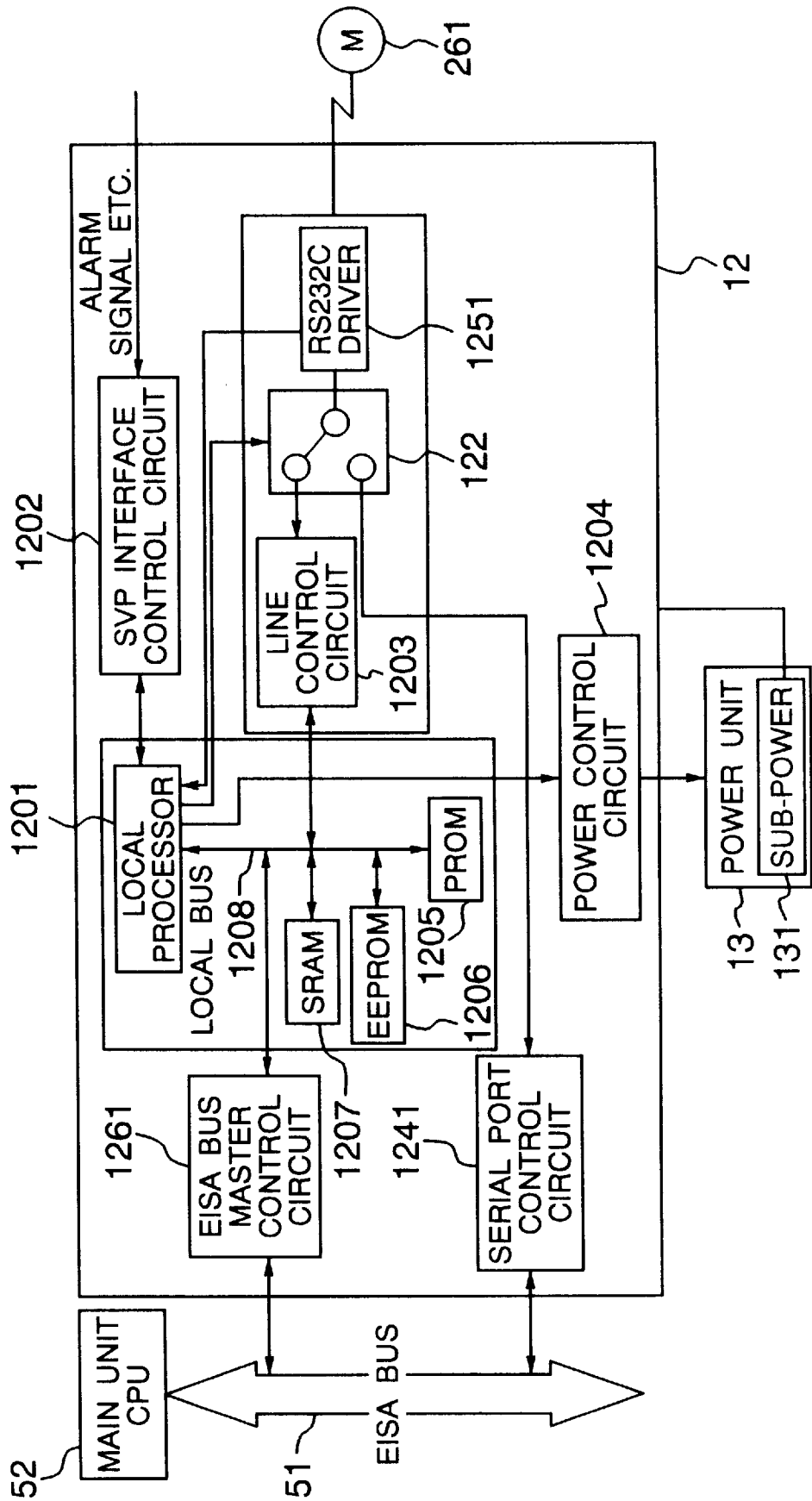


FIG. 23A

FIG. 23A FIG. 23B

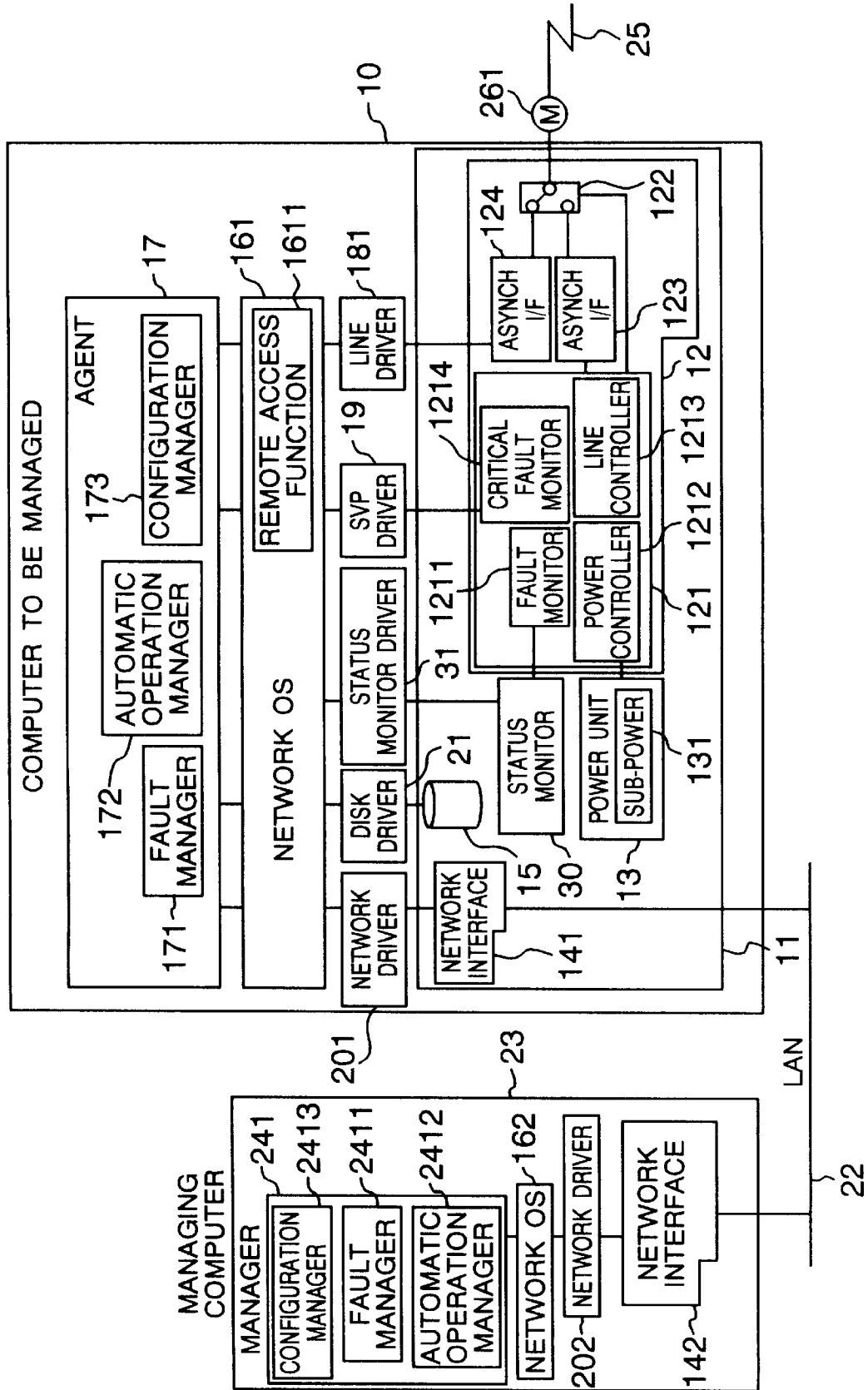


FIG. 23B

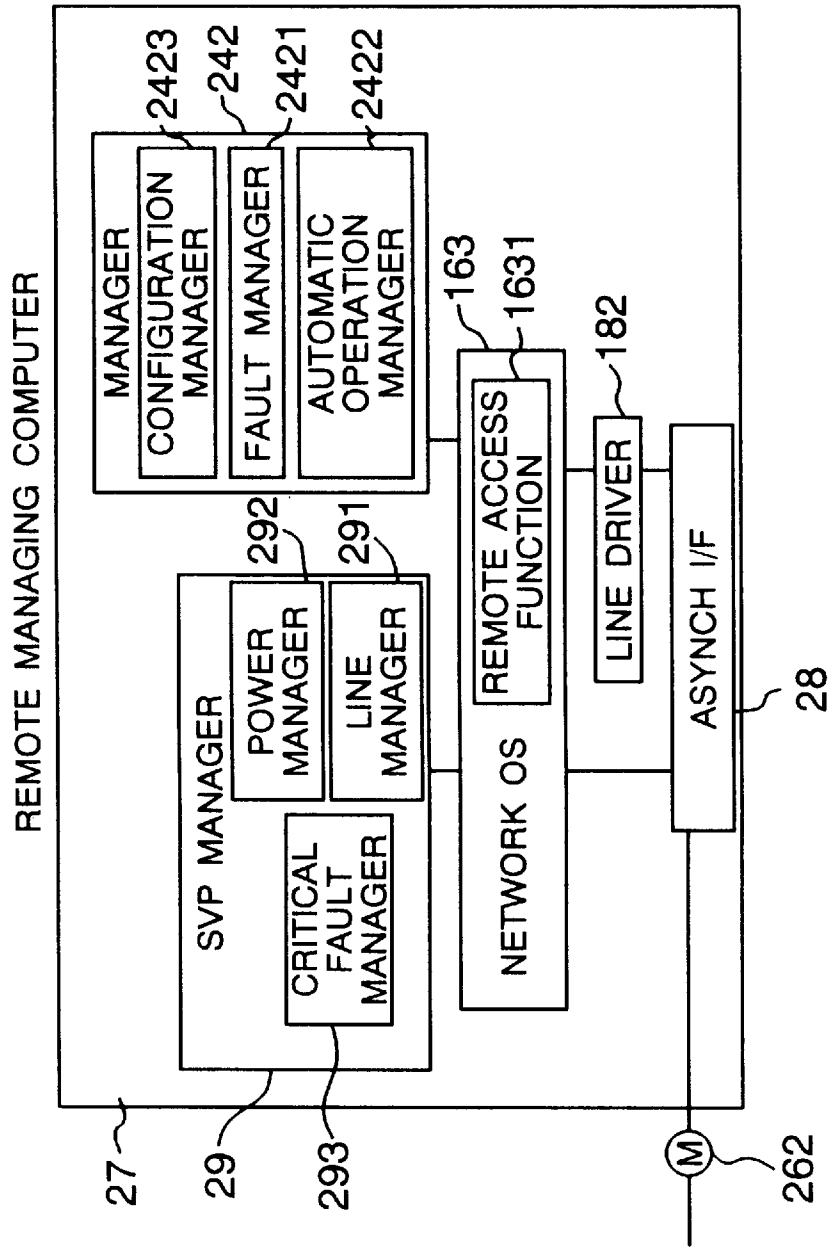
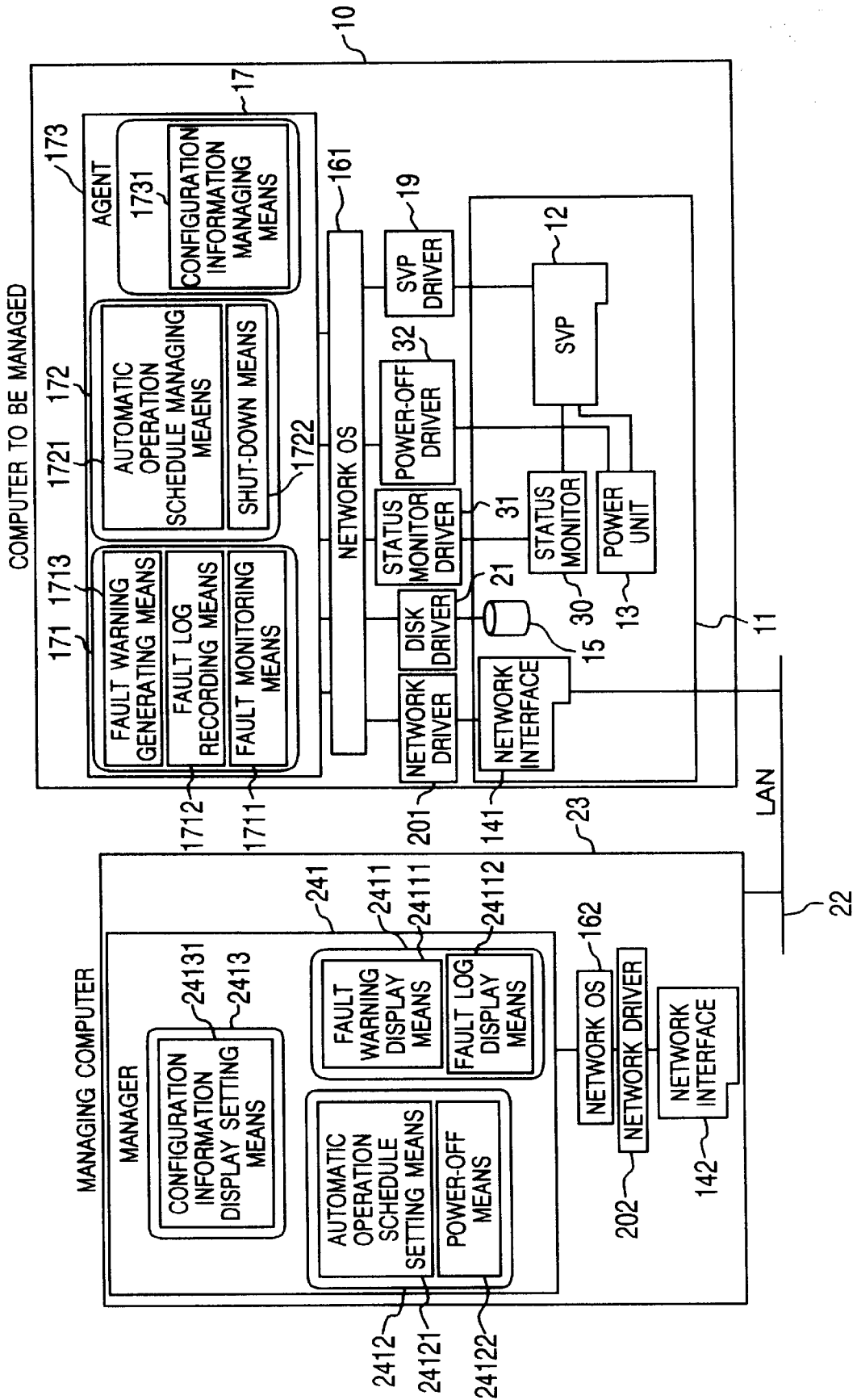


FIG. 24



COMPUTER MANAGEMENT SYSTEM

BACKGROUND OF THE INVENTION

The present invention relates to a management system (hereinafter referred to as a manager) for a computer system and more particularly to a manager for monitoring and controlling fault and performance of a plurality of computers on a network through the network in a client server system (hereinafter referred to as a CSS) in which a plurality of computers are connected by the network such as a local area network (hereinafter referred to as a LAN) or a public line.

As the performance of a personal computer and a workstation is enhanced, it has become popular to connect a plurality of computers through a LAN to construct a system. In the CSS, various types of operating systems (hereinafter referred to as network OSs) are mounted on computers functioning as clients or server and these computers are connected through the network to operate in a cooperative manner.

In such a CSS system, as a scale thereof expands, the number of computers functioning as the clients and servers extends to several hundreds to several thousands and when the network manages and operates the respective computers manually by the system operators, the loads of the system operators and the cost thereof increase, which causes a problem. In order to solve such a problem, a management system has been proposed in which a manager is mounted on at least one of the computers on the LAN and an agent for managing each computer in accordance with a direction by the manager is mounted in each of the servers to be managed connected to the LAN so that central management is attained by the manager through the network. Particularly, when a CSS system for a fundamental business of an enterprise is to be constructed, a high reliability is required for the server and a management system focused on fault management of the server is provided.

In such a system focused on the fault management, as disclosed in U.S. Pat. No. 5,367,670, a dedicated extended board for monitoring fault which mounts a processor independent from a main unit is connected to an extended interface of a computer main unit so that fault information collected by the extended board is received by the agent and it is sent to the manager of other management computer connected by the LAN through the network OS to manage the fault. Further, an asynchronous interface is mounted on the extended board so that such collected information may be acquired from the remote computer connected by a modem and a public line and the remote management computer is connected to the extended board via the modem and the public line and the fault is monitored by a dedicated manager. Such remote monitoring offers the advantage of continuous monitoring of fault because the monitoring of fault and the warning are conducted by a processor independent from the main unit on the extended board even if a critical fault which leads to non-operation of the network OS occurs on the computer to be managed (see prior art of FIG. 2).

On the other hand, as a recent trend of the network OS which provides the network environment of the CSS, in order to expand a range of connection of the network and an application area of the system by not only providing the network functions to a plurality of computers connected by the LAN but also connecting mobile computers and office computers, it has been proposed to achieve a remote access function which is totally equivalent to the computers connected by the LAN, between the remote computers con-

ected by the modem and the public line as shown in FIG. 3 to provide a transparent network environment including the public line connection. From the application (AP) operating on the network OS, it is not necessary to know which of the LAN and the line the low order network is connected by, except a communication rate. An example of such network OS is the remote access service (RAS) performed in Windows NT (trade mark) of the Microsoft Inc. US, which is becoming a standard function of the future network OS. Accordingly, the management system for the LAN may be introduced to the line-connected remote computer and uniform management may be attained.

In the above prior art system which is focused on the fault monitoring, no attention is paid to the remote access function of the network OS. Thus, when the system management similar to that of the computer which is LAN-connected to the remote computer connected to the public line by utilizing the remote access function is to be conducted, a remote management computer for managing the system through the agent by utilizing the remote access function, a line and a modem for the connection thereof, a remote management computer directly connected to the fault monitoring extended board for management and a line and a modem for the connection thereof are required. Two management computers, two lines and two modems are required on the management computers and two lines and two modems are required on the computer to be managed. This may cause a problem in the operation. As to the prior art, reference is made to U.S. Pat. No. 5,367,670 to Ward et al and U.S. Pat. No. 5,410,706 to Ferrand et al.

SUMMARY OF THE INVENTION

The system management which is conducted by the manager of the remote management computer through the agent of the computer to be managed as it is in the LAN-connected system is suitable for the steady system management where the computer to be managed operates normally. On the other hand, when the system management is attained by connecting the modem and the line directly to the fault monitoring extended board, it is suitable for the system management in which a critical fault occurs in the computer to be managed and the agent cannot operate. Thus it is a system management method which is effective in different and exclusive situations. In light of the above, it is an object of the present invention to provide means to realize the remote system management by the above two methods by one remote management computer and one modem. Thus, the redundant remote management computer, line and modem which causes a problem in the operation is eliminated.

It is another object of the present invention to provide computer management method and system which attains the remote power control of the computer to be managed which could not be attained in the prior art from the manager connected by the LAN or the public line, provide an environment to centrally conduct the fault management from small fault of a plurality of computers to a critical fault leading to the system-down and the operation support such as the start and stop of the computer to be managed, from the manager connected by the LAN or the public line.

In order to achieve the above objects, in accordance with one aspect of the present invention, the agent which conducts the fault monitoring on the computer to be managed and the power control and the computer unit to be managed are controlled by independent processors. It provides the computer management system comprising the service pro-

processor board (hereinafter referred to as an SVP board) which is the extended board to monitor the fault and control the power supply in cooperation with the agent, the manager for managing the system connected to the agent through the network OS including the remote access function and operating on the management computer connected by the public line or the LAN and the SVP manager for controlling the SVP board connected directly to the SVP board by the public line.

On the SVP board, there are provided a switching circuit for selectively connecting one of an asynchronous interface connected to the processor of the SVP board and an asynchronous interface accessible from the computer to be managed to the modem connected to the line and switching control means. On the SVP board, there is provided line connection monitoring means for monitoring the connection status of the line after the line connection through the asynchronous interface accessible from the computer to be managed and switching the switching circuit of the asynchronous interface to the processor of the SVP board upon the disconnection of the line.

On the SVP board, there are also provided a power control circuit for controlling the ON/OFF of the power supply unit and control means therefor.

The SVP manager is provided with line switching means for sending the switch request of the switching circuit of the asynchronous interface in synchronism with the user operation.

In the power-off status of the computer to be managed, the switching circuit of the asynchronous interface of the SVP board is set to select the processor of the SVP board. The SVP board is always kept operative by a sub-power supply even when the power supply of the main unit is off. Accordingly, the SVP manager can always be directly connected to the SVP board so that the power-on request may be sent to the power control circuit of the SVP board to remotely turn on the power supply of the main unit.

In the normal operation state after the power-on of the computer to be managed, the switching circuit of the asynchronous interface is set to select the asynchronous interface accessible from the computer to be managed by the line switching means of the SVP manager. Thus, since the network OS can be connected by the remote access function of the management computer and the remote access function of the computer to be managed, the fault monitoring and the power control may be conducted remotely by the manager through the agent.

When the connection by the remote access function is disconnected by the line connection monitoring means or the connection is disconnected by the fault, the switching circuit of the asynchronous interface is set to select the processor of the SVP board. Accordingly, when a critical fault occurs in the computer to be managed and the network OS and the agent cannot operate, the SVP manager is remotely connected to the SVP mode directly to diagnose the fault and remotely reset.

Other objects, features and advantages of the present invention will become apparent from reading the following detailed description of the embodiments taken in conjunction with the accompanying drawings.

BRIEF DESCRIPTION OF THE DRAWINGS

FIGS. 1A and 1B collectively show a block diagram of one embodiment of the present invention,

FIG. 2 shows a block diagram of a prior art system configuration,

FIG. 3 shows a block diagram of a remote access function,

FIG. 4 shows a block diagram for illustrating a problem in the prior art,

FIGS. 5A and 5B collectively show a block diagram of a detail of the embodiment,

FIG. 6 shows a flow chart of a line connection procedure,

FIG. 7 shows a flow chart of a remote power ON/OFF procedure,

FIG. 8 shows a flow chart of a line switching procedure,

FIG. 9 shows a flow chart of a remote access procedure,

FIG. 10 shows a flow chart of a remote access disconnection procedure,

FIG. 11 shows a flow chart of a fault warning/fault logging procedure,

FIG. 12 shows a flow chart of a fault logging procedure,

FIG. 13 shows a flow chart of a fault log display procedure,

FIG. 14 shows a flow chart of a power-off procedure,

FIG. 15 shows a flow chart of a preset time power-on/off time setting procedure,

FIG. 16 shows a flow chart of a preset time power-off procedure,

FIG. 17 shows a flow chart of a preset time power-on procedure,

FIG. 18 shows a flow chart of an automatic fault informing procedure,

FIG. 19 shows a flow chart of a fault diagnose procedure,

FIG. 20 shows a flow chart of a remote reset procedure,

FIG. 21 shows a flow chart of a system operation confirmation procedure,

FIG. 22 show a block diagram of an embodiment of hardware of the SVP board, and

FIGS. 23A, 23B and 24 show block diagrams of other embodiment which is a modification of the embodiment of FIG. 1 and detail of the modification.

DETAILED DESCRIPTION OF THE PREFERRED EMBODIMENTS

FIGS. 1A and 1B show in a group a block diagram of one embodiment of the present invention. A configuration thereof is now explained.

Numeral 10 denotes a computer to be managed, numeral 11 denotes hardware of the computer to be managed, numeral 12 denotes an SVP board, numeral 121 denotes an SVP controller which is firmware for controlling by a processor of the SVP, numeral 122 denotes a switching circuit of an asynchronous interface, numeral 123 denotes an asynchronous interface (hereinafter referred to as an asynchronous I/F) connected to the processor of the SVP board, numeral 124 denotes an asynchronous I/F accessible by the computer 10 to be managed, numeral 13 denotes a power unit, numeral 131 denotes a sub-power supply for continuously supplying a power to the SVP board, numerals 141 and 142 denote LAN adapters, numeral 15 denotes a disk drive, numerals 161, 162 and 163 denote network OSs for conducting communication by the computers, numerals 1611 and 1631 denotes remote access functions for connecting the network OSs through a public line, numeral 17 denotes an agent for monitoring fault of the computer 10 to be managed and managing the power control, numerals 181 and 182 denote line drivers for enabling the remote access functions 1611 and 1631 to access the public line, respectively, numeral 19 denotes an SVP driver for exchanging data

between the agent 17 and the SVP board 12, numerals 201 and 202 denote network drivers for controlling the network adapters 141 and 142, respectively, numeral 21 denotes a disk driver for driving the disk drive 15, numeral 22 denotes a LAN (local area network) for connecting the management computer and the computer to be managed, numeral 23 denotes the management computer connected to the computer to be managed through the LAN, numerals 241 and 242 denote managers connected to the agent via the network OSs 161, 162 and 163 for managing the computer 10 to be managed, numeral 25 denotes a public line for connecting the computer 10 to be managed or the SVP board 12 and a remote management computer 27, numerals 261 and 262 denote modems for connecting the line, numeral 28 denotes an asynchronous I/F for connecting the remote management computer 27 to the modems, and numeral 29 denotes an SVP manager directly connected to the SVP board for controlling the power-on/off and monitoring a critical fault.

The remote management computer 27 and the computer 10 to be managed are connected over the line 25, and it is totally equivalent to the management computer connected by the LAN 22 due to the remote access functions 1611 and 1631 although it is of lower speed, and a transparent network environment is provided. The manager 242 is a management unit used when it is connected to the computer 10 to be managed by the remote access functions, and it may be of identical configuration to that of the manager 241. By virtue of the remote access function, a transparent system management including the public line is attained.

A fault management 2421 of the manager 242 manages a steady fault which does not lead to a critical fault during the connection by the remote access function. The fault management 2421 is connected to the agent 17 by the remote access function 1611 from the remote access function 1631 via the line and manages the fault of the computer 10 to be managed through the agent 17. The power management 2422 also manages the power supply of the computer 10 to be managed through the agent 17.

The agent 17 receives fault information from the fault monitor 1211 of the SVP board 12 by the SVP driver 19 and requests the power-on/off to the power controller 1212.

On the other hand, when the power-off or the critical fault has occurred in the computer 10 to be managed, the network OS 161 is not operative and the connection from the manager 242 to the agent 17 through the remote access function is not attained. Even when the critical fault occurs in the computer to be managed, the SVP which is controlled by the independent processor continues to operate normally. Even when the power of the main unit is turned off, the SVP board 12 which is continuously powered by the sub-power supply 131 is operative.

Thus, it is the SVP manager 29 that is directly connected to the SVP board when the critical fault or the power-off occurs to manage the fault of the computer 10 to be managed and control the power. When the power of the main unit is off, the line controller 1213 sets the asynchronous I/F switching circuit 122 to select the asynchronous I/F 123. Thus, the SVP manager 29 may be connected to the line controller 1213 of the SVP board 12 by the line manager 291 through the line 25. After the connection, the SVP manager 29 sends a power-on request to the power controller 1212 of the SVP board 12 by the power manager 292 to turn on the power of the computer 10 to be managed.

When the critical fault occurs in the computer 10 to be managed, the critical fault monitor 1214 automatically dials by the line controller 1213 to inform the occurrence of the

critical fault to the critical fault manager 293 of the SVP manager 29 through the line 25.

FIGS. 5A and 5B show in a group a detailed block diagram for illustrating configurations and a relation of the SVP board, the SVP manager and the manager. FIGS. 6 to 21 show flow charts of the operations of the respective control means. Referring to FIGS. 1, 5 and the flow charts of FIGS. 6 through 21, detailed controls of the embodiment are explained.

As shown in the flow chart of FIG. 6, a user first enters a telephone number of the computer 10 to be managed to the line connection means 2912 and a line connection request is sent from the SVP manager 29 to the SVP board 12 (step 5001). The line connection means 2912 controls the modem 262 through the asynchronous I/F 28 and connects the modem 261 to the line via the line 25 (step 5002). Thus, the communication from the SVP manager 29 to the SVP board through the asynchronous communication controller 1231 is established. In the following description, it is assumed that this line connection has already been established in any access from the SVP manager to the SVP board. The remote power-on/off is now explained. As shown in the flow chart of FIG. 7, the user issues a power-on or power-off request to the remote power-on/off means 292 (step 5011). The remote power-on/off means 292 sends the power-on or power-off request to the power controller 12122 through the asynchronous I/F 128, the line 25, the asynchronous I/F 123 and the asynchronous communication controller 12131 (hereinafter the same route is abbreviated as the line 25) (step 5012). For the power-on request, the power controller 12122 controls the power unit 13 to immediately turn on the power (step 5013). On the other hand, for the power-off request, the power controller 12122 temporarily sends the power-off request to the agent 17 through the SVP driver 19 (step 5014). The agent 17 issues a system shut-down request to the network OS 161, and after the system is shut down, sends the power-off request to the power controller 12122 of the SVP board 12 through the SVP driver 19. The power controller 12122 receives the power-off request and it now immediately controls the power unit 13 to turn off the power (steps 5015-5018).

For the line switching, as shown in FIG. 8, the asynchronous interface switching circuit 22 connected to the SVP is switched to the main unit. The user issues a line switch request to the line switching means 2911 (step 5021). The line switching means 2911 sends the line switch request to the line switching controller 12132 through the line 25 (step 5022). The line switching controller 12132 controls the switching circuit 22 of the asynchronous interface 22 to switch the line to the asynchronous I/F 124 (step 5023). The line driver 181 detects the connection of the modem 261 and informs it to the remote access function 1661 (step 5024). The remote access function 1661 initializes the modem 261 by the line driver 181 and waits for the connection (step 5025).

Since the connection by the remote access (remote access connection) is ready by the line switching, the remote access function connection is made as shown in FIG. 9. The user enters the telephone number of the computer 10 to be managed (the same number because the line and the modem are same) to the remote access function 1631 and issues a line connection request (step 5031). The remote access function 1631 controls the asynchronous I/F 28 and the modem 262 by the line driver 182 and connects the modem 261 to the line through the line 25 (step 5032). The remote access connection is established between the remote access function 1631 and the remote access function 1611 through

the line driver 182, the asynchronous I/F 28, the line 25, the asynchronous I/F 124 and the line driver 181 (step 5033).

To disconnect the remote access connection, as shown in FIG. 10, the user issues a line disconnection request to the remote access function 1631 to release the connection with the remote access function 1631 and disconnect the connection (steps 5041~5043). Upon the establishment of the remote access connection, the line connection monitor 12133 monitors the line disconnection by the carrier signal of the modem 261 through the asynchronous I/F driver circuit 125 which connects the asynchronous I/F and the external modem. Thus, it detects the line disconnection and sends the line switch request to the line switching controller 12132 to switch the asynchronous I/F switch 122 to the asynchronous I/F 123 (steps 5044~5045). Thus, except when the remote access connection is made, the SVP manager 29 can always connect the line to the SVP board 12.

The fault warning and the fault logging in the agent 17 which are the fault monitor function in the steady state in which the computer to be managed operates normally is now explained. An error signal such as an abnormal housing temperature, the stop of a cooling fan or a fault in the power supply unit is informed as a fault signal from the computer 10 to be managed to the SVP board through a cable. As shown in FIG. 11, the fault monitor 12111 continuously monitors the fault signal from the housing temperature sensor of the main unit to inform the occurrence of the fault to the fault event generator 12112 (step 5051). The fault event generated by the fault event generator 12112 is logged in the fault log recorder 12113 and also sent to the agent 17 through the bus of the main unit and the SVP driver 19 (steps 5092~5054). Since the capacity of the log area in the SVP is limited, after the agent 17 logs the fault event in the file, it sends it to the manager 242 as the fault warning when the remote access connection is established (step 5055). It may be considered that the fault log in the SVP is logged as a spare for the loss of the fault log saved in the file by a fault of the disk. While the description is addressed to the management in the remote management computer, the fault event is, of course, sent to the manager 241 connected by the LAN. When the fault warning is sent, the fault warning display means 24211 of the manager 242 displays it on a screen by a graphic user interface such as a fault warning window to immediately inform the occurrence of the fault to the user. In this manner, the prevention of the critical fault and the reduction of the time to countermeasure the fault are attained (step 5056).

As shown in the flow chart of FIG. 12, the fault event is detected not only in the SVP board but the fault event generated in the disk 15 or the network adaptor 141 are similarly sent from the disk driver 21 or the network driver 201, respectively, as it is from the SVP driver 19 and the agent 17 logs it in the file and sends it to the manager 242 (steps 5061~5062). For the fault events occurred in other than the SVP board, the agent 17 sends the fault event to the fault log recorder 12113 of the SVP board 12 through the SVP driver 19 to save it as the log in the SVP (steps 5063~5065).

Those fault logs are not only sent to the manager as the warning but also all fault logs may be referred from the managers 241 and 242 as required. As shown in the flow chart of FIG. 13, the user sends a fault log request by the fault log display means 24212 of the manager 232 to the agent 17 through the remote access function 1631 while the remote access connection is established by the remote access function 1631 (steps 5071~5072). The agent 17 sends the fault log logged in the file back to the manager and displays it on

the screen by the fault log display means 24212 (steps 5073~5074). In this manner, the user may analyze the status of the computer from the fault history to prevent the critical fault or derive the analysis data for the cause of fault.

The power control of the computer 10 by the manager 242 is now explained. The power manager 2422 of the manager 242 comprises power-off means 24222 and a preset time power-on/off means 24211. For the power-off means 24222, as shown in the flow chart of FIG. 14, the user sends a power-off request by the power-off means 24222 to the agent 17 by the remote access function 1631 (steps 5081~5082). The agent 17 issues a system shut-down request to the network OS 161, and after the system has been shut down, it sends the power-off request to the power controller 12122 of the SVP board 12 through the SVP driver 19. The power controller 12122 receives the power-off request and controls the power unit 13 to immediately turn off the power (steps 5083~5086).

For the preset time power-on/off setting, as shown in the flow chart of FIG. 15, the power-on/off request time which is set by the user by the preset time power control means 24221 is sent to the agent 17 by the remote access function 1631 (steps 5091~5092). The agent 17 sends the power-on/off request time to the preset time power controller 12121 of the SVP board 12. The preset time power controller 12121 sets the power-on/off request time to the RTC (real time clock) (steps 5093~5095).

For the preset time power-off, as shown in the flow chart of FIG. 16, when the preset power-off request time is reached, the RTC 127 informs the arrival of the power-off request time to the preset time power controller 12121 (step 5101). The preset time power controller 12121 sends the power-off request to the agent through the SVP driver (step 5102). The agent 17 issues the system shut-down request to the network OS 161, and after the system has been shut down, it sends the power-off request to the power controller 12122 of the SVP board 12 through the SVP driver 19. The power controller 12122 receives the power-off request and immediately controls the power unit 13 to turn off the power (steps 5103~5106).

For the preset time power-on, as shown in the flow chart of FIG. 17, when the preset power-on request time is reached, the RTC 127 informs the arrival of the power-on request time to the preset time power controller 12121 (step 5111). The preset time power controller 12121 controls the power unit 13 through the power controller 12122 to turn on the power (step 5112).

The critical fault manager 293 of the SVP manager 29 is now explained. The critical fault manager 293 comprises automatic fault information reception means 2931, fault diagnosing means 2932, remote reset means 2933 and system operation check means 2944 for providing diagnosis based on the information, the resetting and the initial countermeasures from the remote management computer 27 when the critical fault occurs in the computer 10 to be managed.

As shown in the flow chart of FIG. 18, when the critical fault occurs in the computer 10 to be managed and the remote access connection is made between the remote access function 1631 and the remote access function 1611, the line is disconnected by the remote access function 1631 because of the absence of the response by the remote access function 1611 (steps 5121~5122). During the remote access connection, the line connection monitor 12133 monitors the disconnection of the line by the carrier signal of the modem 261 of the asynchronous I/F driver 125. When it detects the

disconnection of the line, it sends the line switching request to the line switching controller **12132** to switch the asynchronous I/F switch **122** to the asynchronous I/F **123** (steps **5123**~**5124**). When the remote access connection is not established, the steps **5122**~**5124** are skipped. The OS status monitor **12141** of the main unit periodically communicates with the SVP driver **19** to check, from time to time, the normal operation of the computer **10** to be managed. For the critical fault, because of the absence of the response from the SVP driver **19**, the system-down of the computer **10** to be managed is detected and it is informed to the automatic fault informing controller **12142** (steps **5125**~**5126**). The automatic fault informing controller **12142** connects the line with the remote management computer **27** by the asynchronous communication controller **12131** by the previously registered telephone number to inform the system-down to the automatic fault information reception means **2931** of the SVP manager **29** (steps **5127**~**5128**). The automatic fault information reception means **2931** displays the system-down message of the computer **10** to be managed to inform it to the user (step **5129**).

As shown in the flow chart of FIG. **19**, in the fault diagnosis, the user who received the information of the critical fault issues the fault information acquire request to the fault diagnosing means **2932** (step **5131**). The fault diagnosing means **2932** requests the fault signal information to the fault monitor **12111** of the SVP **12** through the line **25** and the entire log information to the fault log recorder **12113**, acquires them through the line **25** and displays them on the screen (steps **5132**~**5136**). The user may watch them to confirm the current status of the computer **10** to be monitored and also confirm the history to the critical fault from the history of the fault log.

For the remote reset, as shown in the flow chart of FIG. **20**, the remote reset means **2933** sends the power-off request and the power-on request sequentially to the power controller **12122** through the line **25** to turn on the power immediately after the power-off to reset the computer **10** to be managed (steps **5141**~**5145**). When no significant problem is detected by the diagnosing means **2932**, the computer **10** to be managed is restarted by the reset. Most causes of the system-down are troubles in the network OS or the fault occurred by chance and the normal operation may be recovered in many cases by the restarting. The restarting by the user's decision is effective means as the initial measures.

As shown in the flow chart of FIG. **21**, to check the system operation after the remote reset, the system operation check means **2944** sends the system operation check request to the OS status monitor **12141** of the main unit through the line **25** (steps **5151**~**5152**). The OS status monitor **12141** of the main unit requests the response to the SVP driver **19**, determines whether the system is in operation or not by the presence or absence of the response, and returns the result to the system operation check means **2944** through the line **25** (steps **5153**~**5155**). The system operation check means **2944** displays the message of the system operation status on the screen to inform it to the user (step **5156**).

Referring to a block diagram of FIG. **22**, an embodiment of hardware of the SVP board **12** is explained.

Numeral **1201** denotes a local processor of the SVP board **12** which is independent from the CPU **52** of the computer **10** to be managed. Numeral **1202** denotes a n SVP interface control circuit by which the local processor **1201** inputs a status of the signal from the signals sent as the information on the fault from the sensors for monitoring the fault of the computer **10** to be monitored. The sensor may be a sensor for

monitoring the abnormal temperature of the housing, a sensor for monitoring the stop of a fan, a sensor for monitoring an error in the power unit, a sensor for monitoring the fault of a peripheral device board connected to the bus and a sensor for monitoring a disk drive, particularly hard disk drives of a disk array.

Numeral **1203** denotes a line control circuit for controlling the modem **261** connected to the line **25** to conduct the communication. Numeral **1204** denotes a power control circuit for controlling the power unit **13** to control the power-on/off of the computer **10** to be managed. The SVP board **12** is continuously supplied from the sub-power supply **131**. Numeral **1205** denotes a PROM for storing a start program of the SVP board and numeral **1206** denotes a rewritable EEPROM for storing a program of the SVP controller **121** and the fault log information. Numeral **1207** denotes an SRAM which is used as a work area to execute the control program of the SVP program. The SVP controller **121** controls the by the local processor **1201** as the control program on the EEPROM **1206** and the SRAM **1207**. Numeral **1208** denotes a local bus for connecting the memory and the peripheral circuit to the local processor **1201**. Numeral **52** denotes a CPU of the computer **10** to be managed and numeral **51** denotes an EISA bus of the main unit for connecting the SVP board **12** and the main unit. Numeral **1241** denotes a serial port controller accessible from the main unit CPU **52** and operates as an asynchronous I/F by which the main unit CPU **52** is connected to the modem **261** through the EISA bus **51**. Numeral **1251** denotes an RS232C driver circuit for connecting the modem **261** and the SVP board. The local processor **1201** monitors the carrier signal of the modem **261** from the RS232C driver circuit **1251** to monitor the connection status of the line. Numeral **1261** denotes an EISA bus master control circuit by which the local processor **1201** accesses the I/O of the computer **10** to be monitored and the memory through the EISA bus **51**.

A relation between the embodiment of FIG. **5** and the block diagram of FIG. **22** is now explained. The bus controller **1215** controls the EISA bus master control circuit **1261** corresponding to the bus control circuit **126** and exchanges data such as the fault event data with the SVP driver **19** and the agent **17**. The fault monitor **12111** receives the alarm signal such as the abnormal temperature of the housing, the error in the power unit or the stop of the fan through the SVP interface control circuit **1202** and informs the occurrence of the fault to the fault event generator **12112**. The line connection monitor **12133** monitors the carrier signal of the modem **261** from the RS232C driver circuit **1251** to monitor the connection status of the line. The line switching controller **12132** controls the asynchronous I/F switching circuit **122** by the switching request from the line switching means **2911** of the SVP manager **29** and the switching request from the line connection monitor **12133** to select the line control circuit **1203** or the serial port control circuit **1241**. When the line control circuit **1203** is selected, the asynchronous communication controller **12131** controls the line control circuit **1203** to exchange data with the SVP manager **29** through the line **25**. On the other hand, when the serial port control circuit **1241** is selected, the line driver **181** of the management computer **10** controls the serial port control circuit **1241** to connect the remote access function portions **1611** and **1631** through the line **25**. The power controller **12122** controls the power control circuit **1204** by the agent **17**, the preset time power controller **12121** and the power-on/off request of the remote power-on/off means to control the on/off of the power unit **13**.

The flow charts of FIGS. 6~20 should be interpreted to correspond to portions of media such as ROMs and floppy disks which store processor-readable programs to implement the corresponding functions shown in the flow charts.

FIGS. 23A, 23B and 24 show a modification of the embodiment of FIG. 1.

The modified embodiment of FIGS. 23A and 23B, as compared with FIG. 1 includes in the agent 17 of the computer 10 to be managed, a fault manager 171, an automatic operation manager 172 and a configuration manager 173, details of which are shown in FIG. 24. Further, a status monitor circuit 30 and a status monitor driver 31 are provided. A manager of the management computer 23 and a manager 242 of the remote management computer 27 include configuration managers 2413 and 2423 and automatic operation managers 2412 and 2422, respectively.

Referring to FIGS. 23A, 23B and 24, an embodiment of the fault management, the automatic operation management and the configuration management focused at the agent 17 is explained.

In FIG. 23, a numeral 30 denotes a status monitor circuit for monitoring the status and error of the devices of the computer 10 to be managed such as the temperature of the housing, the operation status of the fan and the operating status of the power unit, numeral 31 denotes a status monitor driver for accessing the status monitor circuit 30 to acquire the information in the status of the devices and numeral 32 denotes a power-off driver for controlling the power unit 13 to turn off the power of the computer 10 to be managed. Numeral 171 denotes a fault manager for managing the fault of the devices of the computer 10 to be managed in the agent 17, numeral 1711 denotes fault monitor means for accessing the status monitor driver 31, the network driver 201 and the disk driver 21 to monitor the status of the devices and determine the abnormal state to generate the fault event, numeral 1712 denotes fault log record means for recording the fault log of the fault event in the disk and numeral 1713 denotes a fault warning generation means for sending the fault event to the manager 241 as the fault warning. Numeral 172 denotes an automatic operation manager for managing the automatic operation of the computer 10 to be managed in the agent 17, numeral 1721 denotes automatic operation schedule management means for storing schedule information for one year, for example, for the automatic operation in the disk and controlling the automatic operation of the computer 10 to be managed in accordance with the schedule and numeral 1722 denotes shut-down means for issuing a shut-down request to the network OS 161 in response to the power-off request. Numeral 173 denotes a configuration information manager for acquiring and setting the configuration and the status of the devices and the network OS 161 from the fault monitor driver 31 and the SVP driver 19. Numeral 2411 denotes a fault manager of the manager for providing the fault management user interface, numeral 24111 denotes fault warning display means for displaying the fault warning from the fault warning generation means 1713 on the screen of the management computer, numeral 24112 denotes a fault log display means for displaying the fault log recorded in the fault log record means 1712 on the screen, numeral 2412 denotes a manager operation manager for providing a user interface of the automatic operation, numeral 24121 denotes automatic operation schedule setting means for setting the schedule in the automatic schedule management means 1721, numeral 24122 denotes power-off means for turning off the power of the computer 10 to be managed by the means 1722, numeral 2413 denotes a manager configuration information manager for providing a

user interface of the configuration information management, and numeral 24131 denotes configuration information display setting means for displaying and setting the configuration information on the screen through the configuration information management means 1731. Other configuration is same as that of the embodiment of FIG. 1.

In the present embodiment, the agent 17 directly accesses the status monitor circuit 30 without routing the SVP 12 to monitor the status of the hardware to determine the hardware fault such as the abnormal temperature of the housing, the stop of the fan and the error in the power unit. The fault monitor means 1711 of the agent 17 accesses the status detection circuit 30 through the status monitor driver 31 to monitor the hardware status of the computer 10 to be monitored such as the housing temperature, the operating status of the fan and the operating status of the power unit to determine the abnormal status of the hardware and generate the fault event. Information such as an event name, date of occurrence of fault and source of fault are set in the fault event. The fault monitor means 1711 monitors the status of the devices through the network driver 201, the disk driver 21 and the SVP driver 19 to determine the abnormal status of the devices and generate the fault event. After the generation of the fault event, the fault monitor means 1711 sends the generated fault event to the fault log record means 1712 and the fault warning generation means 1713. The fault log record means 1712 records the fault event and the fault log on the disk. The recorded fault log may be referred to by the user through the fault log display means 24112 of the manager 241. On the other hand, the fault warning means 1713 adds the name of the computer 10 to be managed in which the fault has occurred to the fault event to generate the fault warning and sends it immediately to the fault warning display means 24111 of the manager 241 to display the fault warning message to inform the occurrence of the fault to the user.

The power-off of the computer 10 to be managed is now explained. By the power-off operation by the user, the power-off means 24122 of the manager 241 sends the power-off request to the shut-down means 1722 of the agent 17 through the LAN 22. Then, the shut-down means 1722 issues the shut-down request to the network OS 161. After the shut-down process, when the shut-down completion notice is received by the power-off driver 33 from the network OS 161, the power-off driver 33 sets the power-off to the power unit 13 to power off the computer 10 to be managed.

The automatic operation management is now explained. The automatic operation schedule setting means 24121 of the manager causes the user to set the automatic operation schedule of the computer 10 to be managed through the graphic user interface such as a calendar and sends the automatic operation schedule information to the schedule management means 1721 of the agent 17. When the automatic schedule management means 1721 receives the schedule information, it stores it in the disk and automatically operates the computer 10 to be managed in accordance with the schedule information. In order to attain the power-off at the preset time of the schedule information, the automatic operation schedule management means 1721 searches the nearest future power-off time from the schedule information stored in the disk when the computer 10 to be managed is powered on and the agent 17 is executed, and sends it as the preset time power-off request to the SVP board 12 through the SVP driver 19. When the preset power-off request time is reached during the operation of the computer 10 to be managed, the SVP board 12 sends the power-off request to

the shut-down process **1722** of the agent **17** through the SVP driver **19**. The shut-down process **1722** shuts down the network OS **161** and then powers off the computer **10** to be managed in the same manner as the power-off of the manager **241**. On the other hand, in order to attain the preset time power-on of the schedule information, the automatic operation schedule management means **1721** searches the nearest future power-on time from the schedule information stored in the disk during the shut-down process and sends it as the preset time power-on request to the SVP board **12** through the SVP driver **19**. When the power-on request time is reached during the power-off of the computer **10** to be managed, the SVP board **12** controls the power unit **13** to immediately turn on the power.

The configuration information management is now explained. The configuration information management manages the information on the configuration and the status of the devices of the computer **10** to be managed and the network OS to provide the reference/setting function to the user. By the reference/setting request from the user, the configuration information display means **24131** of the manager **241** sends the acquire/setting request of the configuration information to the configuration information management means **1731** of the agent **17** through the LAN **22**. When the configuration information managing means **1731** receives the acquire request, it collects the information on the configuration and the status of the network OS and the devices such as the number of CPUs and the capacity of the memory and the disk from the network OS **161**, the network driver **201**, the disk driver **21**, the fault monitor driver **31** and the SVP driver **19**, and sends it back to the configuration information display setting means **24131**. The configuration information display setting means **24131** displays the sent-back information on the screen. On the other hand, when the configuration information management means **1731** receives the setting request, it sends the setting request to the network OS **161** and the drivers to change the setting.

In accordance with the present invention, the fault monitoring and the power control of the computers connected by the LAN as well as the public line may be centrally and uniformly conducted through the agent by the remote access function of the network OS in the same manner as that through the LAN, and the burden of the computer management by the system operator on the wide network is significantly reduced. The fault which may lead to the critical fault such as the abnormal temperature of the housing, the error in the power unit, the stop of the fan and the error in the disk may be systematically monitored in an early stage as the fault warning and the system fault may be prevented by the pre-countermeasures. Further, once the critical fault occurs and the computer is system-downed, the system operator may immediately receive the information through the public line or the network and the information on the fault may be acquired, and the remote power-off, the remote resetting and the confirmation of the system operation after the remote power-off can be attained so that the initial countermeasures to the critical fault may be immediately taken. In this manner, the system-down time may be reduced and the damage by the fault may be minimized. Further, the automatic preset time power-on/off and the remote power-on/off control may be attained through the LAN and the public network and the central operation management of the computers connected to the network is attained, the burden of the system operator is reduced and the remote operation maintenance is supported.

What is claimed is:

1. A computer management system comprising:
at least two computers connected by a network;

a network operating system (OS) adapted to be executed on each of said computers for controlling data transfer between the computers connected to said network and a file system service on said network;

a manager operating on at least one computer serving as a management computer, of said computers connected by said network, for managing at least configuration and fault of the other computer as a computer to be managed, of said computers connected by said network;

an agent on said computer to be managed, for monitoring information on said computer to be managed and controlling said computer to be managed in accordance with an instruction from said manager sent through said network;

an extended board, connected to an I/O bus of said computer to be managed, said extended board including a processor independent from said computer to be managed for monitoring the occurrence of fault in said computer to be managed, sending fault information to said agent through said I/O bus and a service processor (SVP) for controlling a power supply of said computer to be managed by an instruction from said agent; and a sub-power supply for continuously and constantly supplying power to said extended board independently of the power supply to said computer to be managed.

2. A computer management system according to claim 1 wherein said managing computer and said computer to be managed are connected by a public line by a modem connected to an asynchronous interface as an additional function of said network OS, and said manager executed by said management computer controls said agent executed by said computer to be managed having said SVP connected thereto and said SVP to manage said computer.

3. A computer management system according to claim 1 further comprising:

a plurality of sensors for monitoring the fault of said computer to be monitored, including a sensor for monitoring the stop of a fan, a sensor for monitoring an abnormal temperature of a housing, a sensor for monitoring an error in a power supply unit, a sensor for monitoring a fault in a peripheral device board connected to said I/O bus and a sensor for monitoring a fault in hard disk drives of a disk array; and

signal lines for sending information on the fault from said sensors to said SVP board.

4. A computer management system according to claim 3 wherein said SVP includes a fault monitor comprising:

fault monitoring means for monitoring various faults of said computer to be monitored by said signal lines from said sensors;

fault event generation means for generating a fault event to inform the fault to said agent through said I/O bus in response to the occurrence of the fault and sending the fault event to said agent; and

fault logging means for recording the fault event as fault log.

5. A computer management system according to claim 4 wherein said computer to be managed comprises a device driver for sending the fault occurred in peripheral devices including a disk drive and a network adaptor to said agent as the fault event,

15

wherein said agent collects the fault event from said device driver or said SVP, records the fault event on a disk as fault history, sends the fault event to said fault logging means of said SVP, records the fault event in said SVP as the fault history and sends fault warning to said manager through said network.

6. A computer management system according to claim 1 wherein said manager of said managing computer includes a fault manager comprising;

fault warning display means for displaying the fault event sent from said agent on a screen as the fault warning to provide warning to a user; and

fault log display means for sending a fault history acquire request for the record in a recorder of said agent to said agent by an instruction from a user and displaying the fault history sent from said agent on a screen.

7. A computer management system according to claim 5 further comprising:

main unit OS status monitoring means for periodically communicating with said agent executed on said computer to be managed to determine a normal operation of said computer to be managed and the system-down by the presence or absence of a response from said computer to be managed and requesting a response to said agent in response to a system operation check request of said manager to determine an operation status of the system by the presence or absence of a response from said computer to be managed and informing the status to said manager; and

automatic fault informing control means for connecting to said manager of said managing computer by asynchronous communication control means in response to notification from said main unit OS status monitoring means upon occurrence of critical fault for informing the occurrence of the critical fault.

8. A computer management system according to claim 7 further comprising:

automatic fault information reception means for displaying a system-down message on a screen in response to the notice from said automatic fault informing control means of said SVP upon occurrence of the critical fault in said computer to be managed;

fault diagnosing means for sending a fault signal line information acquire request from the sensors of said computer to be managed to said fault monitoring means of said SVP by an instruction by the user, sending a fault history acquire request to said fault logging means of said SVP and displaying the acquired fault information on the screen to support the fault diagnosis of the user;

remote reset means for sequentially sending a power-off request and a power-on request to said power control means by an instruction of the user to remotely reset the system; and

system operation check means for sending a system operation check request to said OS status monitoring means of said SVP to acquire information on the operation status of the system and displaying the information on the screen.

9. A computer management system according to claim 1 further comprising:

a status monitoring circuit in said computer to be managed for monitoring hardware status and fault of said computer to be managed;

an interface in said computer to be managed for allowing said agent to acquire the information on the hardware status from said status monitoring circuit;

16

fault monitoring means in said agent for acquiring the information on the hardware status of said computer to be managed from said status monitoring circuit through said SVP or said interface to determine fault state to generate a fault event;

fault log recording means in said SVP for recording the fault event as fault log; and

fault warning generation means in said SVP for sending the fault event to said manager as fault warning.

10. A computer management system according to claim 1 further comprising:

an interface between said network OS and devices in said computer to be managed, and said agent; and

configuration information managing means in said agent for managing acquirement and setting of information on configuration and status of said network OS and said devices.

11. A computer management system comprising:

at least two computers connected by a network;

a network operating system (OS) adapted to be executed on each of said computers for controlling data transfer between the computers connected to said network and a file system service on said network;

a manager operating on at least one computer serving as a management computer, of said computers connected by said network, for managing at least configuration and fault of the other computer as a computer to be managed, of said computers connected by said network;

an agent on said computer to be managed, for monitoring information on said other computer to be managed and controlling said other computer to be managed in accordance with an instruction from said manager sent through said network;

an extended board, connected to an I/O bus of said computer to be managed, said extended board including a processor independent from said computer to be managed for monitoring the occurrence of fault in said computer to be managed, sending fault information to said agent through said I/O bus and a service processor (SVP) for controlling a power supply of said computer to be managed by an instruction from said agent; and an SVP manager adapted to be executed on said management computer at a remote site, operating independently from said manager, directly connected to said SVP by a modem connected to an asynchronous interface through a public line for controlling said SVP in response to the occurrence of power-off or critical fault in said computer to be managed.

12. A computer management system according to claim 11 further comprising:

a power control circuit for controlling a power unit of said computer to be managed;

power control means for controlling said power control circuit in response to a request from said SVP manager of said agent to control the power-on/off of said computer to be managed; and

preset time power control means responsive to a preset time power-on/off request from said agent for setting a power-on/off time to a real time clock circuit, responsive to a notice of a power-on/off time from said real time clock circuit for controlling said power control circuit by said power control means to turn on the power of said computer to be managed at the power-on time and, at the power-off time, sending a system

17

shut-down request to said network OS through said agent and after the shut-down of the system operation, turning off the power by said power control means.

13. A computer management system according to claim 11 wherein said SVP manager includes remote power on/off means connected directly to said SVP through a public line for sending a power-on/off request to power control means of said SVP in response to an instruction from a user.

14. A computer management system according to claim 12 wherein said management computer comprises power-on/off means for sending a power-on/off request to said power control means of said SVP through said agent connected to said network in response to an instruction from the user and preset time power-on/off means for sending a preset time power-on/off request to said preset time power control means of said SVP through said agent in response to an instruction from the user.

15. A computer management system according to claim 11 further comprising:

an asynchronous interface switching circuit for selecting one of an asynchronous interface connected to a local processor of said SVP and an asynchronous interface accessible by a CPU of said computer to be managed as an asynchronous interface connected to a modem;

line switching control means for controlling the switching of said asynchronous interface switching circuit;

asynchronous communication control means for controlling the asynchronous interface and the modem for connecting the SVP manager of said managing computer to said SVP through the public line in response to the selection of the asynchronous interface connected to the local processor of said SVP by said line switching means; and

line connection monitoring means for controlling said line switching controller in response to the disconnection of the public line connection to switch said asynchronous interface switch to the local processor of said SVP.

16. A computer management system according to claim 15 wherein said SVP manager includes line connection means for connecting said computer to be managed directly to said SVP from said SVP manager through the public line, and line switching means for sending an asynchronous interface switching request to said line switching control means of said SVP.

17. A computer management system according to claim 15 wherein said asynchronous interface switching circuit of said SVP is set to select an asynchronous interface connected to the local processor of said SVP as an initial state and then set to select an asynchronous interface accessible by a processor of said computer to be managed by line switching means of said SVP manager by an instruction by a user so that said manager of said managing computer and said agent of said computer to be managed are connected to the network via the public line through said network OS and a remote access function from the state in which said SVP manager and said SVP are connectable through the public line, whereby the user is allowed to manage said computer to be managed by said managing computer.

18

18. A computer management system according to claim 17 further comprising:

line connection monitoring means for monitoring the disconnection of the public line connection after the start of said remote access function;

wherein when the user shuts down the management of said computer to be managed by said manager and the line of said remote access function is disconnected and shut down, upon disconnection of the line, said line connection monitoring means controls said line switching control means to switch said asynchronous interface switching circuit to the local processor of said SVP, and said manager returns the connection to an initial state connectable to said SVP.

19. A computer management system according to claim 11 further comprising:

a power control circuit in said SVP for controlling a power supply unit of said computer to be managed;

power control means in said SVP for controlling said power control circuit by a request from said SVP manager to control the turn-on/off of the power of said computer to be managed; and remote reset means in said SVP manager connected to said SVP via a public line by said SVP through an asynchronous interface for sequentially sending a power-off request and a power-on request to said power control means to remotely reset said computer to be managed.

20. A computer management system comprising:

at least two computers connected by a network;

a network operating system (OS) adapted to be executed on each of said computers for controlling data transfer between the computers connected to said network and a file system service on said network;

a manager operating on at least one computer serving as a management computer, of said computers connected by said network, for managing at least configuration and fault of the other computer as a computer to be managed, of said computers connected by said network;

an agent on said computer to be managed, for monitoring information on said other computer to be managed and controlling said other computer to be managed in accordance with an instruction from said manager sent through said network;

an extended board, connected to an I/O bus of said computer to be managed, said extended board including a processor independent from said computer to be managed for monitoring the occurrence of fault in said computer to be managed, sending fault information to said agent through said I/O bus and a service processor (SVP) for controlling a power supply of said computer to be managed by an instruction from said agent; and automatic operation schedule management means in said agent for holding schedule information to automatically operate said computer to be managed and controlling said SVP in accordance with the scheduling information to automatically turn on and off the power supply of said computer to be managed.

* * * * *