



Keo SkyScan4

Articulated Mirror Assembly

Hardware User Manual

Version 1.0
June 12, 2012

© Copyright 2004 – 2012

Keo Scientific Ltd.
Suite 404, 1300 – 8th St SW
Calgary, Alberta, Canada
T2R 1B2
TEL: +1 (403) 452-7222
FAX: +1 (403) 206-7680

All rights reserved. No part of this publication may be reproduced by any means without the written permission of Keo Scientific Ltd.

Printed in Canada.

Windows is a registered trademark of Microsoft Corporation.

SmartMotor and Combitronic are registered trademarks of Animatics Corporation.

Pelican is a registered trademark of Pelican Products, Inc.

PowerGrip and GT are registered trademarks of Gates Corporation.

The information in this publication is believed to be accurate as of the publication date. However, Keo Scientific Ltd. does not assume any responsibility for any consequences including damages resulting from the use thereof. The information contained herein is subject to change without notice. Revision of this publication may be issued to incorporate such change.

Table of Contents

1	Introduction.....	7
2	System Components	9
2.1	System Components Overview	9
2.2	SkyScan Unit.....	9
2.2.1	Drive System.....	9
2.2.2	Electrical Brush System.....	10
2.2.3	Bluetooth Wireless Communication	10
2.2.4	Coordinate System	11
2.3	Power Supply	13
2.4	Cables.....	13
2.5	Bluetooth Adaptors	13
2.6	User Manuals	13
2.7	Software	14
3	Installation Overview.....	15
4	System Setup	17
4.1	Introduction.....	17
4.2	System Requirements	17
4.3	Unpacking the System	18
4.4	Equipment and Parts Inventory	19
4.5	Preparing the Mirrors and Window	20
4.6	Mounting	20
4.7	Driver Installation.....	22
4.8	Software Installation	22
5	Operation	23
5.1	The First Power-Up	23
5.2	Communicating with the SkyScan4.....	24
5.3	Firmware Updates	24
6	Command Reference.....	25
6.1	Command Overview	25
6.2	Error Codes.....	26
6.3	Help Menu Command.....	26
6.4	Report a Configuration Parameter Command.....	26
6.5	Set a Configuration Parameter Command.....	27
6.6	Start a Trajectory Command	27
6.7	Start a Homing Routine Command	28

6.8	Report Axis Offsets Command.....	28
6.9	Report Current Axis Positions Command	28
6.10	Move to Position Command	29
6.11	Stop All Motion Command	30
6.12	Stop Position and Velocity Motion Command	30
6.13	Stop Trajectory Command	30
6.14	Report Operating Status Command	31
6.15	Initialize Trajectory Command	32
6.16	Define a New Trajectory Command.....	32
6.17	Report Current Velocity Command.....	33
6.18	Move at Velocity Command.....	33
6.19	Exit Custom Command Mode Command.....	34
7	Configuration Parameters.....	35
7.1	Parameter 0: Azimuth Home Offset	35
7.2	Parameter 1: Zenith Home Offset	35
7.3	Parameter 2: Cam Interpolation Mode	36
8	Warranty & Service.....	37
8.1	Limited Warranty.....	37
8.2	Contact Information.....	37
Appendix A	Specifications	39
	Basic	39
	Performance	39
	Window	39
	Mirrors	40
Appendix B	Outline Drawings	41
	Mounting Flange Layout	41
	Side Profile	42
	Top Profile	43
Appendix C	Bluetooth Adaptor Configuration.....	45
Appendix D	Firmware Update Procedure	49

Table of Figures

Figure 1: Typical System Components	9
Figure 2: Brush and Slip Ring Layout.....	10
Figure 3: SkyScan Coordinate System	11
Figure 4: Top-Down Coordinate System View.....	12
Figure 5: SkyScan in Parked Position	12
Figure 6: SkyScan4 Shipping Locks	19
Figure 7: Azimuth Window Plate	20
Figure 8: Zenith Window Plate	20
Figure 9: Correct DIP Switch Positions.....	45
Figure 10: SD1000U Device Information Settings Page	45
Figure 11: SD200 Device Information Settings Page.....	46
Figure 12: SD200 Waiting for Connection.....	46
Figure 13: SD1000U Connection(out) Settings Page.....	47
Figure 14: ParaniWIN Connection Successful Dialog	47
Figure 15: SD1000U Device Setting Page	48
Figure 16: ParaniWIN Configuration Complete Dialog.....	48
Figure 17: SMI Port Properties.....	49
Figure 18: SMI View Layout.....	50
Figure 19: SMI Hex String Entry.....	51
Figure 20: SMI Response to X!.....	51
Figure 21: SMI Browse for SMX File	51
Figure 22: SMI Select Motor Dialog	52
Figure 23: SMI Upload Progress.....	52
Figure 24: SMI Upload Finished	52

This page is intentionally blank.

1 Introduction

Thank you for purchasing a Keo SkyScan4 system from Keo Scientific. This latest version of our SkyScan system is the culmination of several years of design iterations and is our most capable system yet.

The Keo SkyScan4 is a dual first-surface mirror assembly that can be pointed towards any point in the sky by rotating the two mutually perpendicular axes, one of which is vertical and the other horizontal, to the desired positions. Rotation about the vertical axis varies the azimuth (compass bearing) of the pointing direction while rotation about the horizontal axis varies the zenith angle of the pointing direction.

Both axes are capable of full 360 degree continuous rotation through the use of electrical brushes and slip rings for power transfer and Bluetooth for communication. This improvement over our legacy systems, which were limited to approximately 200 degrees of azimuth travel and required complicated calculations for achieving full 360 degree pointing, allows for simplified control of the device and smooth tracking of trajectories.

The SkyScan system is suitable for use with space weather, aeronautical, and surveillance instrumentation such as photometers, narrow-field imagers and Fabry-Pérot Interferometers (FPIs). It can also be used as a heliostat or trajectory tracker.

High-reflectance, first-surface quality mirrors and a high-transmittance entrance window are used to minimize light loss through the system. Modern servo-motor technology is used drive the axes to provide fast, repeatable, and high-precision pointing or scanning.

All that is needed to communicate with and control the SkyScan system is a suitable computer with an available USB2 port.

This page is intentionally blank.

2 System Components

2.1 System Components Overview

A standard SkyScan4 system consists of the SkyScan unit, a power supply with AC cord, a tether cable, two Bluetooth adaptors (one with USB power cable), a NULL modem serial cable, user manuals, and software CDs.



Figure 1: Typical System Components

2.2 SkyScan Unit



This is the main component of the SkyScan system. It is a self-contained unit comprising two mutually perpendicular axes (azimuth and zenith) each of which has an Animatics SmartMotor™ for precise motion control.

2.2.1 Drive System

This new and improved SkyScan4 uses PowerGrip® GT@2 synchronous belts for transmitting power from the gearboxes to the axes. The unique curvilinear tooth profile delivers smooth, quiet operation and precise registration with virtually no backlash. These belts are combined with precision gearboxes and Animatics Class 5 SmartMotor integrated servo motors to provide a high accuracy, long lasting, and zero maintenance drive system.



The Class 5 SmartMotors used on the SkyScan are a new and improved product from Animatics. These new servo motors now feature a 5x faster processing speed, expanded math capabilities, on-the-fly linear and spline interpolation, and an optional CAN bus connection. On the SkyScan we are using the Animatics proprietary Combitronic™ protocol over the CAN bus which allows for one of the motors to act as a master and execute commands on the other, all at a blazing fast 1MBaud data rate. This greatly simplifies the programming of the system and improves the coordination of the two axes.

The new floating point capabilities of these motors allow for the user to specify all positions and velocities in their native units (degrees and degrees per second) rather than having to calculate them in device units (encoder counts). The modulo encoder count capabilities completely eradicate any position overflow issues found in previous SkyScan devices.

2.2.2 Electrical Brush System

The original Keo SkyScan was limited to 200° of travel in the azimuth axis due to limitations put in place by having wired power and communications. The new SkyScan uses a two pronged approach to get around this limitation: electrical brushes and brass slip rings for power transfer into the rotating device and Bluetooth wireless communications for communicating with the device. This allows for full 360° continuous rotation about both axes. No longer is it necessary to flip the zenith axis to the inverted position to point in some directions.

There are two sets of four brushes: four on the inner slip ring and four on the outer slip ring. This quad-redundant brush configuration allows for a continuous uninterrupted supply of power while the device is rotating while at the same time supporting the full 10A maximum current draw from the servo motors.

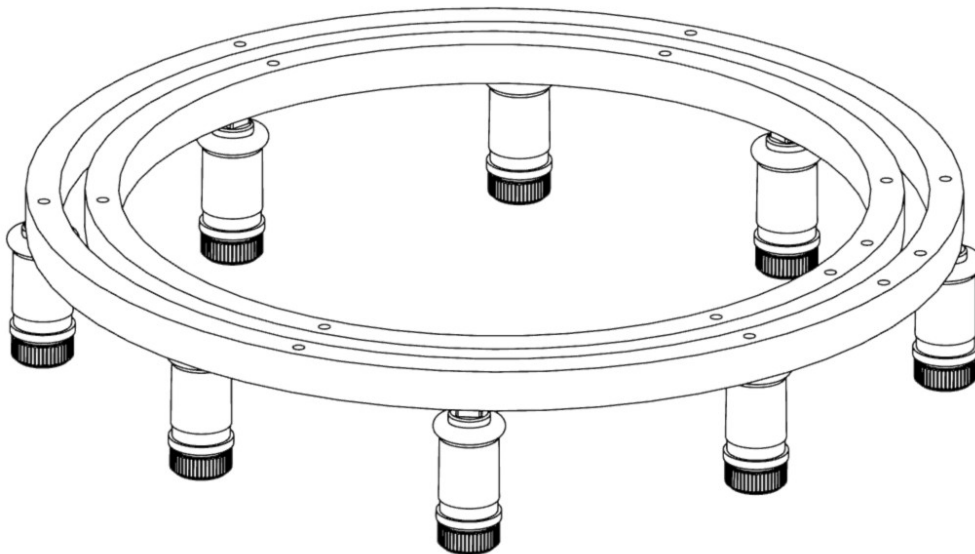


Figure 2: Brush and Slip Ring Layout

2.2.3 Bluetooth Wireless Communication

The Bluetooth wireless adaptors used with the SkyScan are industrial grade and designed specifically for replacing serial cables. These adaptors are shipped paired with each other so that all the user has to

do is install a driver and plug the USB adaptor into the host computer. The SkyScan will appear as a regular serial (COM) port on the host computer that can be opened and used as you would any other serial port. This allows for maximum compatibility with a wide range of host environments.

2.2.4 Coordinate System



Important Information

All references to cardinal directions (north, south, east, and west) in this manual are with respect to the earth's geographic coordinate system, **not** the magnetic coordinate system. Aligning the device with magnetic north may cause significant errors in the pointing accuracy of the system.

The SkyScan system uses a spherical coordinate system defined by an azimuth angle and a zenith angle where the azimuth angle is measured clockwise from north and the zenith angle is measured from the zenith in the direction of the azimuth angle (see Figure 3). Since all possible points can be described with a 0 to 360° azimuth range and a 0 to 180° zenith range, negative zenith values are not strictly necessary. The SkyScan will however accept negative zenith angles which are simply interpreted as a positive zenith angle in the *azimuth angle + 180°* azimuth direction.

Note

The SkyScan mounting plate is designed so that the power connector is oriented in the south direction.

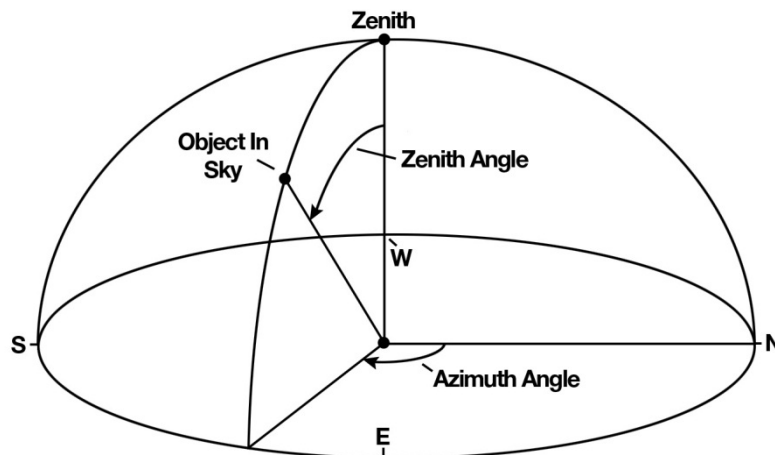


Figure 3: SkyScan Coordinate System

The coordinates of the SkyScan are always given by the position of the two axes, i.e. the azimuth and zenith angles of the point the SkyScan is pointing at. In this manual they are represented as a position pair, (Az,Ze). For example, an azimuth angle of 110° and a zenith angle of 45° would be represented as (110°,45°).

Due to the optical geometry of the SkyScan unit, the azimuth head will always appear to be lagging the actual azimuth position by 90 degrees. As shown by the top-down view of Figure 4, despite the physical azimuth axis being aligned with north, the actual azimuth angle is 90 degrees. In this same figure, the zenith axis is also positioned at 90 degrees making the current position of the SkyScan (90°,90°).

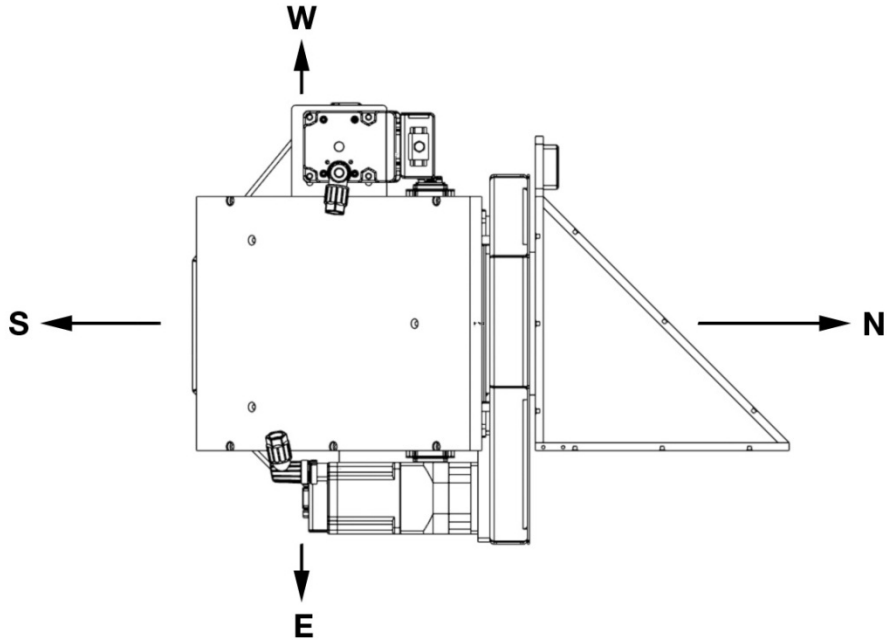


Figure 4: Top-Down Coordinate System View

After the SkyScan performs a homing cycle it positions itself in the parked position. This position was chosen to be $(90^\circ, 180^\circ)$ which corresponds to the physical azimuth axis being aligned with north and the zenith axis pointing straight down. This serves to protect the window, mirrors, and any instrumentation you may have attached to the SkyScan by preventing any direct light from entering the system. The parked position is shown in Figure 5.

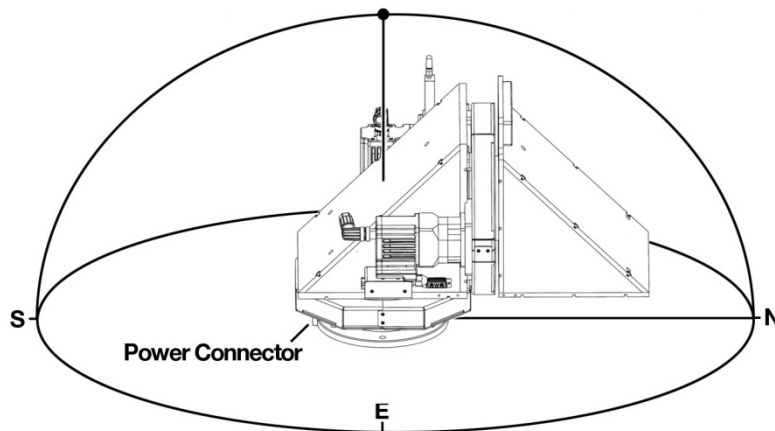


Figure 5: SkyScan in Parked Position

2.3 Power Supply



The AC line-voltage line cord supplied with your system should be compatible with the region to which the system was shipped. If the line cord is incompatible, please contact Keo Scientific for a replacement.

Maximum Power Output: 240 W

Input: 100 – 240 VAC, 50 – 60 Hz, 6.3A

Output: 24 VDC @ 10A maximum

2.4 Cables



Power Supply to SkyScan Tether Cable: The standard 7m (23') tether cable has LEMO connectors that interconnect the power supply with the SkyScan4.



NULL Modem Serial Cable: The standard 3m (10') NULL modem serial cable has female DB9 connectors. This cable is used to interconnect the host PC with one of the axes of the SkyScan4 for upgrading the device firmware.

2.5 Bluetooth Adaptors



Sena Parani SD200 Bluetooth Serial Adaptor: This adaptor is installed on the azimuth axis of the SkyScan4 and forms the device end of the wireless communication bridge between the device and the host computer.



Sena Parani SD1000U Bluetooth USB Adaptor: This adaptor is installed on the host computer and forms the host end of the wireless communication bridge between the device and the host computer.

2.6 User Manuals



SkyScan4 Hardware User Manual: This manual describes how to install and use the SkyScan4 system components. A PDF version of this manual is provided on the Documentation and Utilities CD.

SkyScan Control Software User Manual: This manual describes how to install and use the application program. A PDF version of this manual is provided on the Documentation and Utilities CD.

2.7 Software



SkyScan Control Software: The SkyScan4 system can be operated by using the SkyScan Control Software, Keo Scientific's Windows® software designed specifically for controlling the SkyScan4. This software can be used to manually control the device or automatically control it using a pre-determined trajectory. It also has the capability of running in 'Heliostat' mode which will make the SkyScan4 track the sun.

ParaniWIN: Located in the *Utilities\ParaniWIN* folder of the Documentation and Utilities CD, this application allows for the initial configuring of the Bluetooth adaptors.



SmartMotor Interface (SMI): Located in the *Utilities\SmartMotor Interface* folder of the Documentation and Utilities CD, this application is required to update the firmware of the SkyScan. See Appendix D for details on using SMI to update the firmware of your SkyScan.

3 Installation Overview

The list below briefly describes the sequence of actions required to install and operate your system. Refer to the indicated references for more detailed information.

Action	Reference
1. If the system components have not already been unpacked, unpack them and inspect their carton(s) and the system components for in-transit damage.	Section 4.3: Unpacking the System, page 18
2. Verify that all system components have been received.	Section 4.4: Equipment and Parts Inventory, page 19
3. If the components show no signs of damage, verify that the appropriate power cord has been supplied with the power supply.	Section 4.2.2: Power Requirements, page 17
4. Remove the protective plastic from the mirrors and window.	Section 4.5: Preparing the Mirrors and Window, page 20
5. Securely mount the device in a suitable location.	Section 4.6: Mounting, page 20
6. Attach the SD200 Bluetooth Serial adaptor to the azimuth axis.	Section 4.6: Mounting, page 20
7. Remove the shipping locks.	Section 4.6: Mounting, page 20
8. If the device drivers are not already installed in the host computer, install them and connect the SD1000U Bluetooth USB adaptor.	Section 4.7: Driver Installation, page 22
9. Turn the device ON.	
10. Turn on the computer and begin running the application software.	SkyScan Control Software Manual

This page is intentionally blank.

4 System Setup



Caution

To minimize the risk to users or to the system equipment, turn the system **OFF** before any cables are connected or disconnected.

4.1 Introduction

The Keo SkyScan4 system consists of three hardware components:

- SkyScan unit
- Power supply
- Cables

All of the components and cables required to use the SkyScan are included with your shipment. Keep all of the original packing materials so you can safely ship the SkyScan system to another location or return it for service if necessary. If you have any difficulty with any step of the instructions, contact Keo Scientific support. For support contact information, refer to Section 8.2.

Hardware installation will consist of:

- Mounting the SkyScan in the desired location.
- Connecting various cables and wireless devices.

Software installation depends on the application software you will be using to run the system. Refer to the manual supplied with the software for information about installing and setting it up.

4.2 System Requirements

4.2.1 *Environmental Requirements*

Storage temperature: $\leq 80^{\circ}\text{C}$

Operating environmental temperature: $+5^{\circ}\text{C}$ to $+70^{\circ}\text{C}$

Relative humidity: $\leq 30\%$; non-condensing

4.2.2 *Power Requirements*

The SkyScan unit receives its power from the supplied power supply which in turn plugs into an AC power source.

Power supply input voltage range: 100 VAC to 240 VAC (50/60 Hz)

Power supply input current: 6.3A

4.2.3 Mechanical Requirements

A sturdy platform capable of supporting 50lbs (18kg). The more rigid the platform the smoother the operation of the SkyScan will be during quick acceleration and deceleration.

4.2.4 Host Computer

Note

Computers and operating systems all undergo frequent revision. The following information is only intended to give minimum computer requirements. Please contact Keo Scientific to determine your specific needs.

The SkyScan system needs a host computer to communicate with and control it. The SD1000U Bluetooth USB adaptor provided with the system will work on virtually any operating system in both 32-bit and 64-bit environments: Windows XP or newer, Linux, or Mac OS X. Drivers for these environments can be found on the Documentation and Utilities CD in the *Drivers\SD1000U Bluetooth USB Adaptor* folder.

The SkyScan Control Software provided with your SkyScan system is only compatible with Windows XP or newer in both 32-bit and 64-bit environments. If you want to use the SkyScan with a non-Windows platform you will need to write your own control software. The SkyScan has an easy to use interface that is controlled with simple commands which are sent to its virtual serial port. See Section 5 for details on communicating with the SkyScan system and see Section 6 for details on the available commands.

4.3 Unpacking the System

While unpacking the SkyScan, check the system components for possible signs of shipping damage. If there are any, notify Keo Scientific immediately.

The system is shipped in a Pelican™ case for maximum protection. The case can also be used to store the device while it is not in use. Please save the case so that it can be used to ship the device to a new location or to return it to Keo Scientific for repairs if necessary.

Your SkyScan4 ships with red 'shipping locks' installed on the zenith axis (see Figure 6). There are two locks, one on either side. This prevents the zenith head from rotating during shipping, while handling the device, and while mounting it. The azimuth axis of the SkyScan4 does not have any shipping locks or other rotational restraint installed on it due to the high gear ratio which makes it difficult to back-drive.

Note

We strongly recommend that you leave the shipping locks installed until the SkyScan4 is securely mounted and ready for use.

Whenever you need to move the SkyScan4 it is recommended that you re-install the shipping locks to prevent the zenith head from moving.

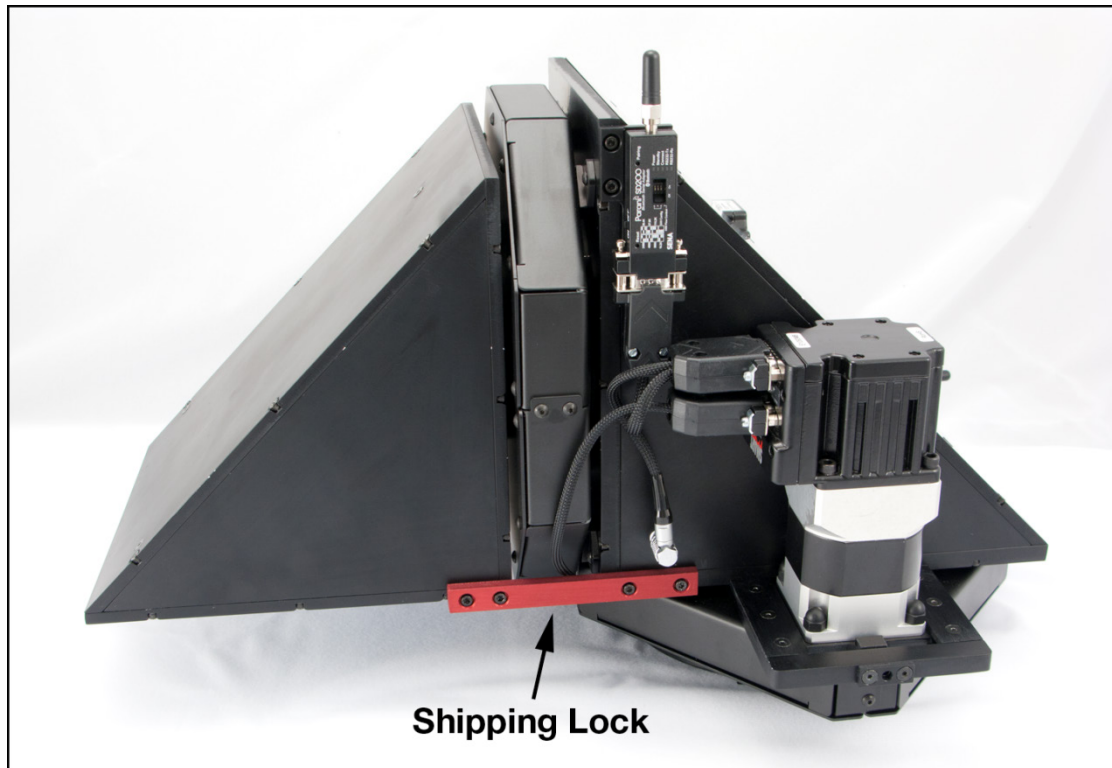


Figure 6: SkyScan4 Shipping Locks

To remove the SkyScan4 from its packaging, simply lift it out of the shipping case and place it on a clean flat surface. The SkyScan4 will sit on a flat surface without falling over, however it is recommended that you always either clamp it to the surface it is sitting on or position it in the secure 'tipped' position where the device is tipped forward so that the outermost edge of the zenith head is resting on the surface. This will prevent it from inadvertently tipping over and being damaged.

4.4 Equipment and Parts Inventory

Upon receiving the Keo SkyScan4, please confirm that you have all of the parts required to set up the SkyScan system. A complete system consists of:

- **SkyScan4 Unit**
- **SkyScan4 Power Supply**
- **Power Supply to Wall Cable:** 2 meter (6.5 ft.) cable is standard.
- **Power Supply to SkyScan Tether Cable:** 7 meter (23 ft.) cable is standard.
- **Null Modem Cable:** 3 meter (10 ft.) female-female cable is standard.
- **SD1000U Bluetooth USB Adapter**
- **SD200 Bluetooth Serial Adaptor:** Includes a USB power adaptor.
- **SkyScan4 Hardware User Manual**
- **SkyScan4 Control Software User Manual**
- **Documentation and Utilities CD-ROM:** Includes drivers, utilities, and user manuals.
- **SkyScan4 Control Software CD-ROM:** Includes Keo SkyScan Control Software.

4.5 Preparing the Mirrors and Window

The system is shipped with the two first-surface mirrors and high-transmission aperture window mounted in place. A protective plastic coating is applied to the mirrors and window to protect them during assembly and shipping. This protective coating has had the corners pre-peeled to ease in the removal of it. To do this requires that you remove the azimuth and zenith mirror plates to access the mirrors and underside of the window.

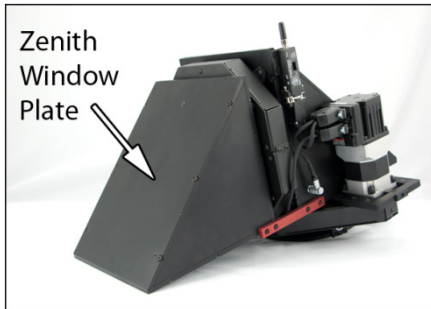


Figure 7: Azimuth Window Plate

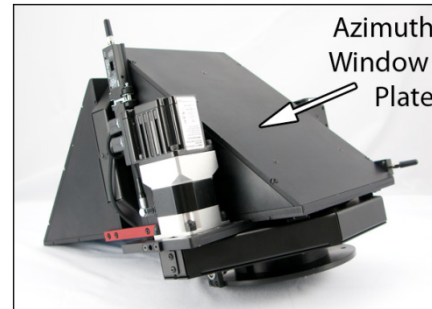


Figure 8: Zenith Window Plate

The window plates can be removed by first removing the six socket cap screws located around the outer edge of the plates using a 7/64" hex driver.



Important Information

Take care when removing the window plates; the mirrors are directly attached to them and can be very easily damaged.

The window plates will try to slide off the enclosures when the last screw is removed. Ensure this doesn't happen by always keeping one hand on the plate.

Note that the mirrors are “first surface mirrors”, though an optical illusion may suggest otherwise. When removing the protective plastic take care to not, under any circumstance, touch the metallized side of the mirrors. To clean, dust lightly with a clean, soft cloth or camel hair brush. If the mirrors are un-mounted from their cleats for the purpose of removing the protective plastic, take care to re-insert the mirrors with the correct side facing up.

After the protective plastic has been removed from both mirrors and the inside of the window, carefully replace the window plates and tighten them down securely.

4.6 Mounting



Caution

Ensure the SkyScan4 is securely mounted to a solid surface before applying power. This can be achieved using the provided mounting flange bolt holes or, for temporary mounting, C-clamps.

The SkyScan4 ships with a mounting flange containing six (6) ¼-20 threaded bolt holes spaced equally around a bolt circle as shown in the schematic in Appendix B. It is important to note that the power connector is located at the 180° (south) position as shown in Figure 5 on page 12.

Feel free to mount the device using this flange as you see fit. As long as the device is securely mounted there shouldn't be any problems.



Important Information

The pointing accuracy of the SkyScan is largely dependent on how accurately it can be mounted. If it were mounted perfectly level (in both directions) and perfectly aligned with geographic north, then the accuracies stated in Appendix A hold true.

However, unless the control software takes potential misalignment into account, any errors in mounting alignment will result in decreased pointing accuracy. For example, if the SkyScan is mounted pointing 2° east of geographic north, there will be a +2° error in the azimuth angle of all positions sent to the device. Inaccuracies in leveling the device will result in complex non-constant errors in both the azimuth and zenith axes.

The Keo SkyScan Control Software has a built in alignment calibration routine that uses 3 data points of the sun's position over the course of a day to calculate a transformation from the local SkyScan coordinate system to the global geographic coordinate system. After the alignment calibration is complete, points of interest can be specified by their true global coordinates and the software will translate that into an equivalent position for the SkyScan to point to. After performing an alignment calibration, no matter the error in mounting the device, the accuracies stated in Appendix A will hold true.

An alternative to doing software alignment calibration is to mount the SkyScan in such a way as to allow for easy alignment adjustment. The ideal mounting solution would provide adjustment in both directions (north-south and east-west) as well as rotationally about the azimuth axis.

After the SkyScan4 has been securely mounted, remove the shipping locks and place them somewhere for safe keeping. Should you ever need to remove the SkyScan from the mount or ship it to a new location the shipping locks should be re-attached to the device.



Important Information

The drive system of the SkyScan system will not be damaged if the shipping locks are not removed before applying power; however, it is recommend to avoid this situation.

After successfully mounting the SkyScan4, it is important to ensure that the pointing heads can move freely without bumping into surrounding objects/personnel. Gently rotate each axis through the full 360 degree range. It should feel smooth. There will be some noise generated by the reducing gearboxes which is completely normal and should not be cause for concern. The azimuth axis will feel considerably stiffer because it uses a much higher gear reduction ratio than the zenith axis.

The SD200 Bluetooth Serial adaptor for the device is shipped detached from the SkyScan4. At this point it is safe to install the adaptor by first removing the DB9 dust cover from the azimuth motor connector shroud and attaching the adaptor in place. Tighten down the screws to secure it.

Your SkyScan4 is now ready for operation.

4.7 Driver Installation

The only driver that needs to be installed before you can start communicating with your SkyScan is the SD1000U Bluetooth USB Virtual COM Port (VCP) driver. This will cause the SkyScan device to appear as an additional COM port available to your PC. Application software can access the device the same way it would access a standard COM port.

Note

Please leave the SD1000U Bluetooth USB adaptor disconnected from the host computer until you have installed the device drivers for it.

1. Locate the device driver for the SD1000U adaptor.
 - a. Navigate to *Drivers\SD1000U Bluetooth USB Adaptor* on the software CD, or
 - b. Go to <http://www.ftdichip.com/Drivers/VCP.htm> to download the latest driver available for your operating environment.
2. Install the device driver. There are installation guides available from FTDI for the various different operating environments. <http://www.ftdichip.com/Support/Documents/InstallGuides.htm>
3. Connect the SD1000U adaptor to the host computer. It will be detected and installed as a COM port.

You can determine the COM port number of the SD1000U by navigating to the Windows Device Manager (*Start > Control Panel > Device Manager*) and then expanding the *Ports (COM & LPT)* section. The SD1000U is installed as a USB Serial Port. Depending on the other devices installed in your system there may be multiple USB Serial Ports. In that case you may need to use trial and error to find the correct port.

4.8 Software Installation

The SkyScan4 ships with Keo SkyScan Control Software which can be used to control the SkyScan from a Windows based PC running Windows XP or newer. Please refer to the SkyScan Control Software User Manual for instructions on installing and running this software.

5 Operation

Once the SkyScan4 has been installed as explained in the preceding chapters, operation of the system is straightforward.

5.1 The First Power-Up

Before powering up the SkyScan4 for the first time, please ensure that all items in the below checklist have been completed.

<input checked="" type="checkbox"/>	Item
<input type="checkbox"/>	SkyScan4 is securely mounted?
<input type="checkbox"/>	Mirror protective plastic removed?
<input type="checkbox"/>	Aperture window protective plastic removed?
<input type="checkbox"/>	Shipping locks removed?
<input type="checkbox"/>	360 degree rotational test for clearance complete for both the azimuth and zenith axes?
<input type="checkbox"/>	SD200 Bluetooth Serial adaptor installed on SkyScan4?
<input type="checkbox"/>	SD1000U Bluetooth USB adaptor installed on host computer?

It is now time to connect the power supply and power-up the SkyScan4. First plug the power supply into the wall and ensure that the power switch is in the OFF position (the LED indicator on the front of the power supply should not be illuminated). Now connect the SkyScan4 tether between the SkyScan4 and the power supply.



Caution

Make sure the power tether is routed so as to not interfere with the motion of the SkyScan4.

Now that the SkyScan4 is mounted and connected to the power supply, it is time to turn it on. Simply flip the power switch on the back of the power supply to the ON position. The indicator on the switch and on the front of the power supply will illuminate. The SkyScan4 will now start searching for the “home” position of each axis. The automatic homing routine used by both axes is detailed below:

1. The axis starts moving in the positive direction.
2. Motion continues until the magnetic sensor detects the homing magnet and moves past it at which point the axis is decelerated to a stop.
3. The axis moves in the negative direction at a slower speed until the magnet is detected again at which point the position is saved.
4. The axis continues until it has moved past the homing magnet at which point the axis is decelerated to a stop.

5. The axis moves back in the positive direction until the magnet is detected again at which point the axis is decelerated to a stop. This position is also saved.
6. An average of the two saved positions is taken (this serves to find the center of the homing magnet) and a home offset¹ is applied.
7. The axis now moves to the parked position.

The SkyScan4 will now sit in this parked position until commanded to do otherwise.

Note

Audible noise from the SmartMotors is normal (the motor is working hard electromagnetically to maintain the stable PID loop) and not in any way considered harmful. However, in a correctly tuned system, the motion should be smooth with no “jerkiness”. If motion is “jerky”, please contact Keo Scientific as something may have been damaged internally during shipping.

5.2 Communicating with the SkyScan4

Communicating with the SkyScan4 is done wirelessly through a pair of industrial Bluetooth adaptors.

The host adaptor, the Parani SD1000U, is a USB to Serial to Bluetooth adaptor. It appears as a USB Serial Port to the host computer, but will connect through Bluetooth to any other Parani Bluetooth adaptors.

The device adaptor, the Parani SD200, is a Serial to Bluetooth adaptor. This adaptor could be paired with any standard Bluetooth host (e.g. the Bluetooth adaptor built into many laptops) but for ease of operation and connection stability we highly recommend using the provided SD1000U adaptor.

The Bluetooth adaptors shipped with your SkyScan have been configured to automatically connect to each other (and only each other) upon power-up. If for some reason they become un-paired, refer to Appendix C for instructions on re-pairing them.

To open a communication channel with the SkyScan, simply choose the COM port the SD1000U device was assigned and use the following settings.

Baud Rate	115200 (115.2k)
Data Bits	8
Parity	None
Stop Bits	1
Flow Control	None

5.3 Firmware Updates

From time to time, Keo Scientific may release new updated firmware for the SkyScan system. This updated firmware could include bug fixes and new or improved functionality. The procedure for updating the system firmware can be found in Appendix D.

¹ The home offset is determined at the time of assembly and is used to compensate for any minor discrepancies in assembly alignment.

6 Command Reference

The SkyScan4 can be controlled manually from any serial terminal application, such as TeraTerm², or automatically through a client side application written by the user. For the purposes of this manual, it will be assumed that the user is manually typing commands in a serial terminal. Moving these commands into a client application is a trivial (albeit necessary) step for routine scientific operations.

Commands are sent to the SkyScan4 as ASCII characters and all commands need to be terminated by a carriage return (0x0D). In the following sections, a carriage return will be indicated by <CR>.

The firmware loaded onto the SkyScan4 is much improved over previous versions of the product. It now features a custom command interpreter which simplifies the commands and provides a lot of flexibility in terms of what can be achieved.

Note

We are always looking at improving the functionality of the device, so if you have a request for a new feature or a way to improve an existing feature, please don't hesitate to contact Keo Scientific.

6.1 Command Overview

Below is a summary of all the commands offered by the SkyScan firmware. Each command needs to be terminated with a carriage return before it is processed by the SkyScan. More details on each command can be found in the section indicated. The "Idle?" column indicates whether the SkyScan must be idle or not for the command to be used. Using a command that is not valid when the device isn't idle will result in an error code of -10 being returned (syntax error). You can check the current status of the SkyScan using the `S?` command (see Section 6.14 for details).

Command	Description	Idle?	Section
<code>?</code>	Prints out a help menu which summarizes the commands.	Y	6.3
<code>Cn?</code>	Reports a configuration parameter.	Y	6.4
<code>Cn (. . .)</code>	Sets a configuration parameter.	Y	6.5
<code>G!</code>	Starts a trajectory.	Y	6.6
<code>H!</code>	Starts a homing routine.	Y	6.7
<code>O?</code>	Reports the current axis offsets from the trajectory.	N	6.8
<code>P?</code>	Reports the current axis positions.	N	6.9
<code>P (a , z [, v , m])</code>	Moves the axes to the specified positions.	Y	6.10
<code>S!</code>	Stops all motion.	N	6.11
<code>S1!</code>	Stops the position or velocity mode motion.	N	6.12
<code>S2!</code>	Stops the trajectory mode motion.	N	6.13
<code>S?</code>	Reports the current operating status.	N	6.14
<code>T!</code>	Initializes a trajectory mode move.	Y	6.15
<code>T (n , t)</code>	Defines a new trajectory.	Y	6.16
<code>V?</code>	Reports the current axis velocities.	N	6.17
<code>V (a , z)</code>	Moves the axes at the specified velocities.	Y	6.18
<code>X!</code>	Exits custom command mode.	Y	6.19

² TeraTerm is an easy to use, free serial terminal application for Windows. <http://tssh2.sourceforge.jp/>

6.2 Error Codes

Every command that is sent to the SkyScan will immediately return a response. This response will either be an acknowledgment of the command or the response to the command. The commands that can take a while to complete (homing routine, trajectory, etc.) will return an acknowledgment of the command immediately and then follow up with a completion response when the routine is completed. This prevents a user application from ever getting hung up waiting for a response from the SkyScan.

Error Code	Description
1	No Error, Success
-1	Parameter 1 Error, First parameter out of range
-2	Parameter 2 Error, Second parameter out of range
-3	Parameter 3 Error, Third parameter out of range
-4	Parameter 4 Error, Fourth parameter out of range
-10	Syntax Error, Command not recognized

6.3 Help Menu Command

This command instructs the SkyScan to print out a summary of all the available commands. This is only useful when commanding the SkyScan manually through a terminal application.

6.3.1 Command Format

```
?<CR>
```

6.3.2 Command Response

```
COMMAND DESCRIPTION
=====
?      Displays this help menu.
.      .
. <SNIP> .
.      .
X!     Exit custom command mode.
```

6.3.3 Error Codes

```
None
```

6.4 Report a Configuration Parameter Command

This command reports a configuration parameter. See Section 76.5 for details on the available configuration parameters.

6.4.1 Command Format

```
Cn?<CR>
```

6.4.2 Parameters

```
n      The ID of the configuration parameter to report.
```

6.4.3 Command Response

```
<ID Specific>
```

6.4.4 Error Codes

```
-1    The configuration parameter hasn't been set yet.
```

6.5 Set a Configuration Parameter Command

This command sets a configuration parameter. See Section 7 for details on the available configuration parameters.

6.5.1 Command Format

```
Cn(x)<CR>
```

6.5.2 Parameters

```
n    The ID of the configuration parameter to set.  
x    The value to use for setting configuration parameter n.
```

6.5.3 Command Response

```
1    Success
```

6.5.4 Error Codes

```
-1    Invalid configuration parameter ID.  
-2    Invalid configuration parameter value.
```

6.6 Start a Trajectory Command

This command starts a trajectory and is only valid after the initialize trajectory command (see Section 6.15) has been used.

6.6.1 Command Format

```
G!<CR>
```

6.6.2 Parameters

```
None
```

6.6.3 Command Response

```
1    Success
```

6.6.4 Error Codes

```
None
```

6.7 Start a Homing Routine Command

This command starts a homing routine running. Returns an acknowledgment immediately followed by a completion response upon completion of the homing routine.

6.7.1 Command Format

```
H!CR>
```

6.7.2 Parameters

```
None
```

6.7.3 Command Response

```
1      Acknowledgment of command.
!H:1  Homing routine complete (sent when routine is complete).
```

6.7.4 Error Codes

```
None
```

6.8 Report Axis Offsets Command

This command reports the current offsets of the two axes from the running trajectory. This command is only valid while a trajectory is running

6.8.1 Command Format

```
O?CR>
```

6.8.2 Parameters

```
None
```

6.8.3 Command Response

```
az, ze
  az  The azimuth offset in degrees.
  ze  The zenith offset in degrees.
```

6.8.4 Error Codes

```
None
```

6.9 Report Current Axis Positions Command

This command reports the current positions of the two axes of the SkyScan.

6.9.1 Command Format

```
P?<CR>
```

6.9.2 Parameters

None

6.9.3 Command Response

```
az, ze
az  The azimuth position in degrees.
    0° ≤ az < 360°
ze  The zenith zenith in degrees.
    -180° ≤ ze < 180°
```

6.9.4 Error Codes

None

6.10 Move to Position Command

This command moves the SkyScan to the specified position at the specified (optional) velocity. The final parameter specifies an absolute or relative move.

If no velocity is specified, then the default SkyScan velocity of 90 degrees per second is used. If using relative mode it is required that you also specify the velocity.

6.10.1 Command Format

```
P (az, ze [, v, m] ) <CR>
```

6.10.2 Parameters

```
az  The azimuth position to move to in degrees.
    0° ≤ az < 360°
ze  The zenith position to move to in degrees.
    -180° ≤ ze < 180°
v   Optional, the velocity to move at in degrees per second.
    0 < v ≤ 120 [deg/sec]
m   Optional, the move mode.
    0  absolute
    1  relative
```

6.10.3 Command Response

```
1      Command acknowledgment.
!P:1  Move completed (sent when the move is completed).
```

6.10.4 Error Codes

```
-1  Azimuth position out of range.
-2  Zenith position out of range.
-3  Velocity out of range.
-4  Invalid mode.
```

6.11 Stop All Motion Command

This command stops all current motion of the device. It is also used to cancel a trajectory after it has been initialized with the T! command but before it has been started with the G! command.

6.11.1 Command Format

```
S!<CR>
```

6.11.2 Parameters

```
None
```

6.11.3 Command Response

```
1      Success
```

6.11.4 Error Codes

```
None
```

6.12 Stop Position and Velocity Motion Command

This command stops any motion that is the result of a position or velocity move command (see Sections 6.10 and 6.18).

6.12.1 Command Format

```
S1!<CR>
```

6.12.2 Parameters

```
None
```

6.12.3 Command Response

```
1      Success
```

6.12.4 Error Codes

```
None
```

6.13 Stop Trajectory Command

This command stops any motion that is the result of a trajectory start command (see Section 6.6).

6.13.1 Command Format

```
S2!<CR>
```

6.13.2 Parameters

```
None
```

6.13.3 Command Response

1	Success
---	---------

6.13.4 Error Codes

None

6.14 Report Operating Status Command

This command reports the current operating status of the SkyScan. The status is stored bitwise so that it is possible to have multiple statuses at the same time. For example, the SkyScan can be both running a trajectory and jogging at the same time.

Status Bit	Name	Description
0	IDLE	Currently idle. All commands are valid.
1	HOMING	Currently running a homing routine.
2	MOVING	Currently running an absolute or relative position move.
3	JOGGING	Currently running a velocity move.
4	TRAJECTORY WAITING	Trajectory has been initialized and is waiting to start.
5	TRAJECTORY RUNNING	Currently running a trajectory.
6	UPLOADING TRAJECTORY	Currently uploading a trajectory to the SkyScan.

Example: Assume that the SkyScan is currently running a trajectory and jogging at the same time. Sending the `S?` command to the SkyScan would return `40`. `40` can be represented in binary as shown below. You will notice that bits 3 and 5 are set while the rest are not set. Bits 3 and 5 correspond to the statuses `JOGGING` and `TRAJECTORY RUNNING` so it can be seen that the SkyScan is currently both running a trajectory and jogging.

Bit	6	5	4	3	2	1	0
Value	0	1	0	1	0	0	0

6.14.1 Command Format

<code>S?<CR></code>

6.14.2 Parameters

None

6.14.3 Command Response

<code>n</code>	The current status variable.
----------------	------------------------------

6.14.4 Error Codes

None

6.15 Initialize Trajectory Command

This command initializes a trajectory by moving the SkyScan to the starting point of the trajectory. It then waits for either the stop trajectory command `S!` (see Section 6.11) or the start trajectory command `G!` (see Section 6.6).

6.15.1 Command Format

```
T!<CR>
```

6.15.2 Parameters

```
None
```

6.15.3 Command Response

```
1      Success
```

6.15.4 Error Codes

```
None
```

6.16 Define a New Trajectory Command

This command starts the upload of a new trajectory into the SkyScan. This command needs to be immediately followed by the trajectory data. The SkyScan will return a 1 after each trajectory pair is successfully saved in the device. Do not send another trajectory pair until you have received the acknowledgment that the previous pair has been successfully saved.

Example: You have a trajectory with 3 data points that are separated by 5 seconds. You would send the following to the SkyScan.

Sent to SkyScan	Received from SkyScan
T (3, 5) <CR>	1
1.23, 4.56<CR>	1
7.89, 1.23<CR>	1
4.56, 7.89<CR>	1

6.16.1 Command Format

```
T (n, t) <CR>
az_1, ze_1<CR>
az_2, ze_2<CR>
az_3, ze_3<CR>
.
.
.
az_n, ze_n<CR>
```

6.16.2 Parameters

n	The number of azimuth-zenith pairs in the trajectory. 0 < n ≤ 750
t	The time in seconds between pairs. 0 < t ≤ 32767
az_n	An azimuth position, in degrees.
ze_n	A zenith position, in degrees.

6.16.3 Command Response

1	Success
---	---------

6.16.4 Error Codes

-1	Number of pairs out of range.
-2	Time between pairs out of range.
-10	Error parsing floating point number.

6.17 Report Current Velocity Command

This command reports the current velocity of the axes of the SkyScan. Note that due to the way that the SmartMotors handle trajectories, this command doesn't return a valid value when a trajectory is running.

6.17.1 Command Format

V?<CR>

6.17.2 Parameters

None

6.17.3 Command Response

az_v, ze_v
az_v The azimuth velocity in degrees per second.
ze_v The zenith velocity in degrees per second.

6.17.4 Error Codes

None

6.18 Move at Velocity Command

This command moves the axes at the specified velocities. Negative velocities result in negative direction movement.

6.18.1 Command Format

V(az_v, ze_v)<CR>

6.18.2 Parameters

az_v	The azimuth velocity in degrees per second. 0 < az_v ≤ 120 [deg/sec]
ze_v	The zenith velocity in degrees per second.

```
0 < ze_v ≤ 120 [deg/sec]
```

6.18.3 Command Response

```
1      Success
```

6.18.4 Error Codes

```
-1      Azimuth velocity out of range.  
-2      Zenith velocity out of range.
```

6.19 Exit Custom Command Mode Command

This command kicks the SkyScan SmartMotors into their default communication states so that they can be reprogrammed. After executing this command a power cycle is required to return to normal operating conditions.

6.19.1 Command Format

```
X!<CR>
```

6.19.2 Parameters

```
None
```

6.19.3 Command Response

```
1      Success
```

6.19.4 Error Codes

```
None
```

7 Configuration Parameters

There are several different configuration parameters available on the SkyScan. These parameters affect the operation of the device and should only be modified if you know exactly what you are doing. Some are programmed during the initial assembly of the device and should not be modified unless instructed to do so by Keo Scientific.



Important Information

These parameters affect the operation of the device and should only be modified if you know exactly what you are doing.

7.1 Parameter 0: Azimuth Home Offset

This parameter is the offset, in encoder counts, between the 0° position of the mounting flange and the position the azimuth axis homes to during a homing routine. This value is adjusted so that after a homing routine the azimuth axis is properly aligned with the 0° position of the mounting flange.

7.1.1 Command Format

```
C0 (n) <CR>
```

7.1.2 Parameters

```
n      The number of encoder counts to apply as an offset.
```

7.1.3 Command Response

```
1      Success
```

7.1.4 Error Codes

```
-10    Syntax Error (if n isn't a proper number)
```

7.2 Parameter 1: Zenith Home Offset

This parameter is the offset, in encoder counts, between the vertical and the position the zenith axis homes to during a homing routine. This value is adjusted so that after a homing routine the zenith axis is properly aligned in the 180° position (pointing straight down).

7.2.1 Command Format

```
C1 (n) <CR>
```

7.2.2 Parameters

```
n      The number of encoder counts to apply as an offset.
```

7.2.3 Command Response

```
1      Success
```

7.2.4 Error Codes

```
-10   Syntax Error (if n isn't a proper number)
```

7.3 Parameter 2: Cam Interpolation Mode

This parameter is the mode to use for interpolating a trajectory loaded into the device using the trajectory commands. There are three different modes: linear, spline with non-periodic data, and spline with periodic data.

Linear mode

This mode performs linear interpolation between each of the data points in the trajectory. No smoothing is applied.

Spline with non-periodic data mode

This mode performs spline interpolation and assumes that the trajectory does not wrap from the end to the start. This has the effect of there being zero curvature to the trajectory at the end points. This is the default option.

Spline with periodic data mode

This mode performs spline interpolation and assumes that the trajectory wraps from the end to the start. This has the effect of the curvature of the trajectory at the end points being matched.

7.3.1 Command Format

```
C2 (n) <CR>
```

7.3.2 Parameters

```
n      The interpolation mode.
        0      Linear
        1      Spline with non-periodic data
        2      Spline with periodic data
```

7.3.3 Command Response

```
1      Success
```

7.3.4 Error Codes

```
-2     Mode is not one of the valid options.
-10    Syntax Error (if n isn't a proper number).
```

8 Warranty & Service

8.1 Limited Warranty

The Keo SkyScan4 is provided with a 2 year Keo Scientific Warranty. The product is warranted to meet published functional specifications and to be free of defects in materials and workmanship as defined in the specifications for two (2) years from the date of original shipment from Keo. During this time, Keo will arrange to have the product repaired or replaced without charge to you. You must return the entire instrument to Keo Scientific for inspection and assessment. You are only responsible for shipping costs to return the product.

Normal Wear Item Disclaimer: Keo Scientific does not warrant certain items against defect due to normal wear and tear. These items include cables and connectors, as well as anti-reflection coatings on windows. Also note that it is normal for the external anodized black color of the machined housings to fade over time (if exposed to solar UV for prolonged periods of time on the order of 3 years), but this should not affect instrument operation – it is often a cosmetic issue only.

Shipping damage: Any damage occurring to the instrument while in transit from Keo to customer must be reported to the shipping company or courier company immediately upon receipt of goods. Shipments are separately insured, and such damage is covered by said insurance. Please inspect instrument thoroughly upon arrival.

8.2 Contact Information

Keo Scientific's main office is located at the following address:

Keo Scientific Ltd.
404, 1300 8 St. SW
Calgary, AB T2R1B2
Canada

Tel: 403.452.7222
Fax: 403.206.7680

In the event that you need technical support to troubleshoot a problem with your Keo SkyScan4, please don't hesitate to contact us at support@keoscientific.com.

An up-to-date list of addresses and telephone numbers is available on our website at www.keoscientific.com/contact.php.

This page is intentionally blank.

Appendix A Specifications

Basic

Dimensions	See Appendix B.
Weight	SkyScan Unit: 37.8 lb (17.2 kg) Power Supply: 5.0 lb (2.3 kg)
Power Input	100 – 240 VAC; 50/60 Hz, 6.3A
Mounting	6x ¼-20 mounting holes on flange. See Appendix B.
Storage Temperature	≤80°C
Operating Environmental Temperature	+5°C to +70°C
Relative Humidity	≤30%; non-condensing

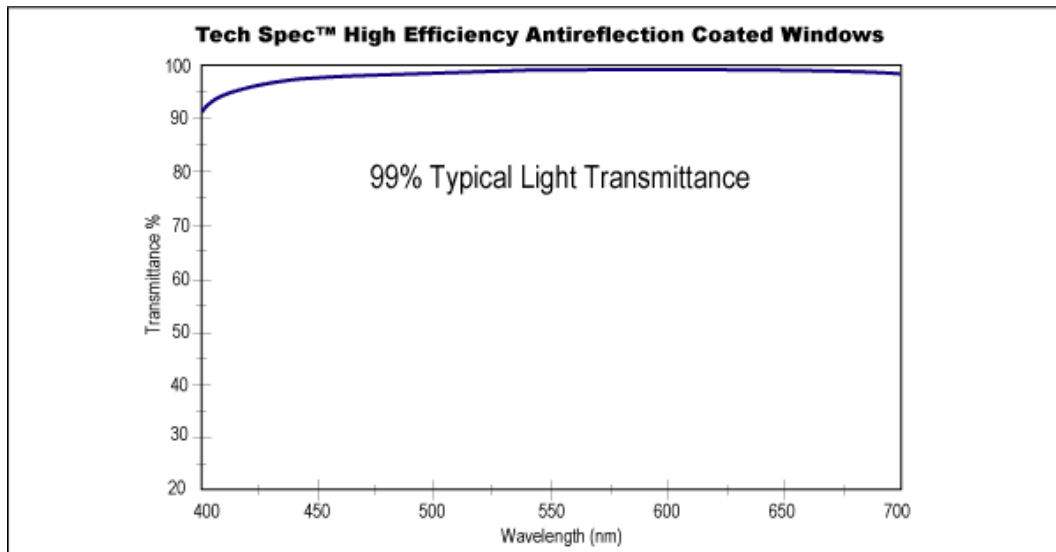
Performance

	Azimuth	Zenith
Pointing Resolution	0.0005° [1.8 arc-sec]	0.002° [7.3 arc-sec]
Backlash (gearbox + belt)	0.042° [2.5 arc-min]	0.032° [1.9 arc-min]
Repeatability	± 0.021° [1.25 arc-min]	± 0.016° [0.95 arc-min]
Accuracy	± 0.021° [1.25 arc-min]	± 0.016° [0.95 arc-min]
Maximum Speed [deg/sec]	120°/sec*	

* Limited by Keo SmartMotor firmware

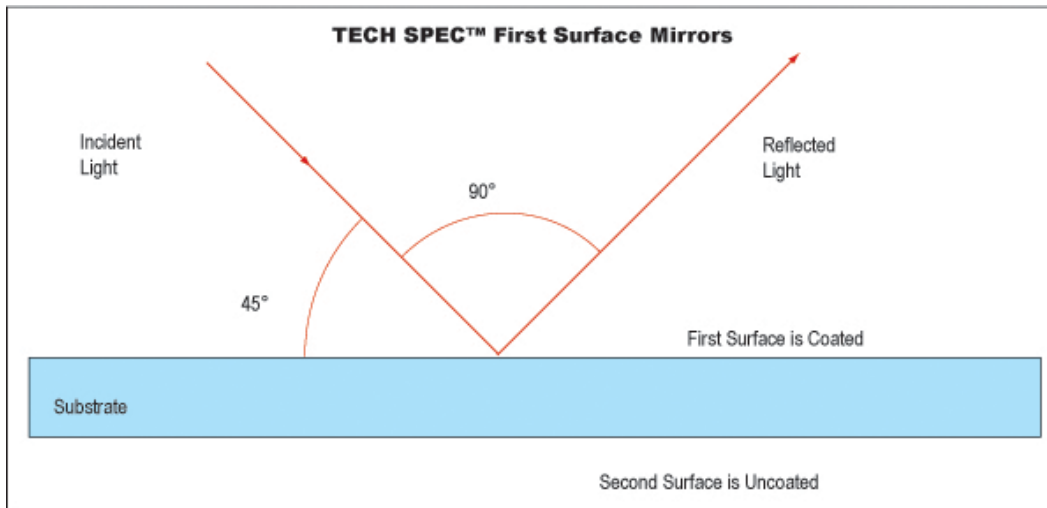
Window

Soda lime float glass with anti-reflection coating. (6.5" x 6.5" x 3mm thick)



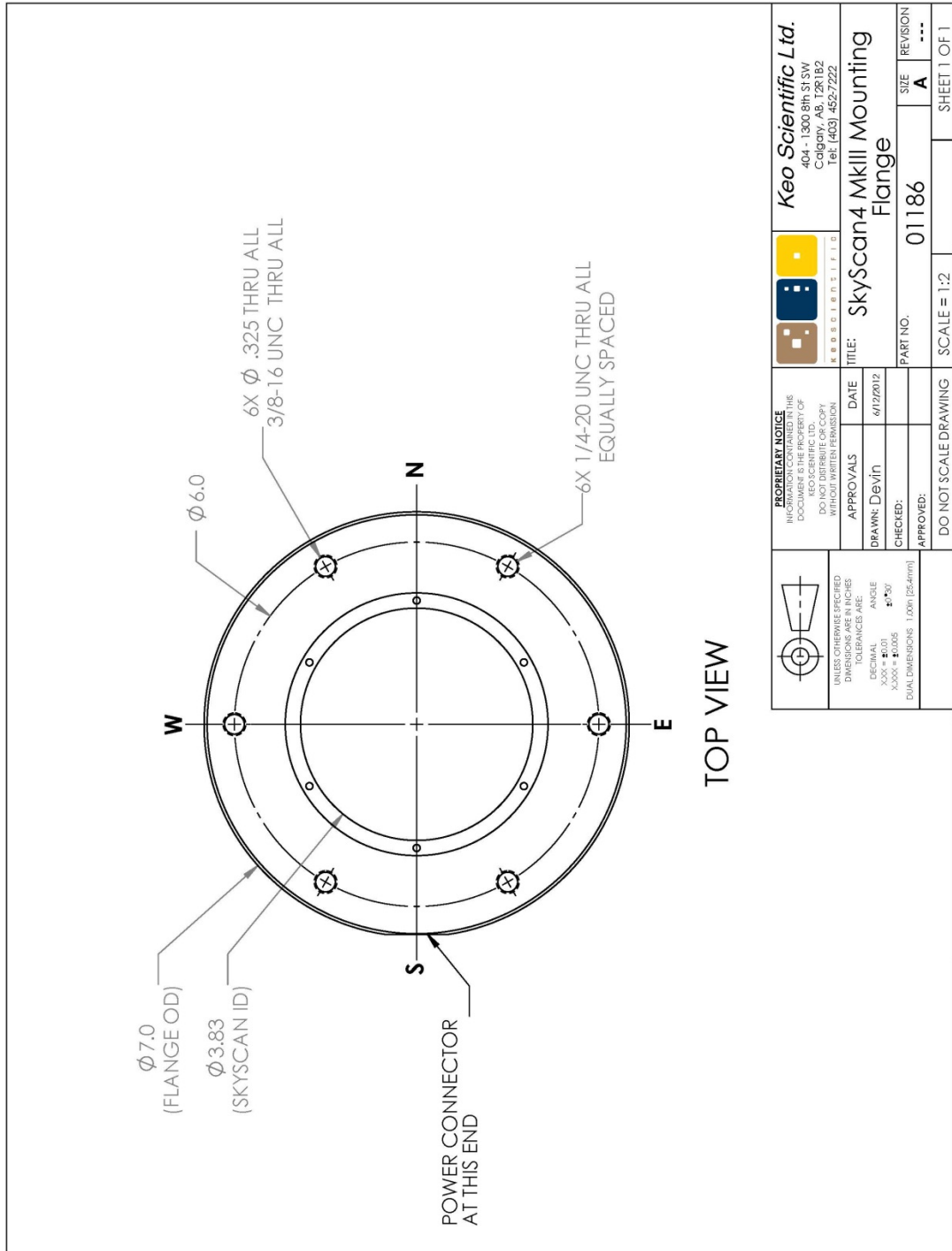
Mirrors

	Azimuth	Zenith
Dimensions (mm)	127 x 178	169 x 194
Thickness (mm)	6.0	
Surface Accuracy (λ)	4 – 6 per inch	
Substrate	Soda Lime Float Glass	
Coating	Enhanced Aluminum, R >90% from 400-650nm	



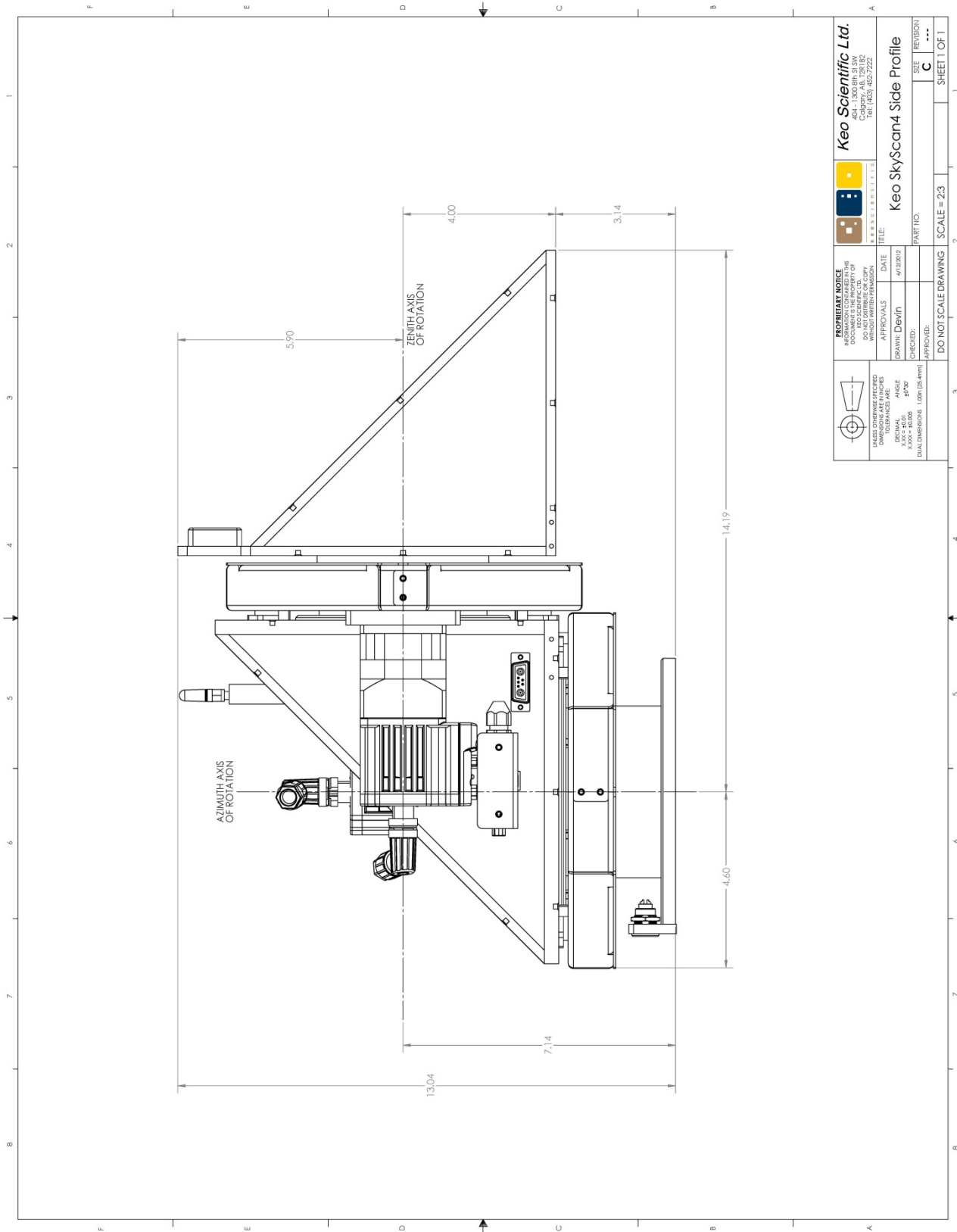
Appendix B Outline Drawings

Mounting Flange Layout



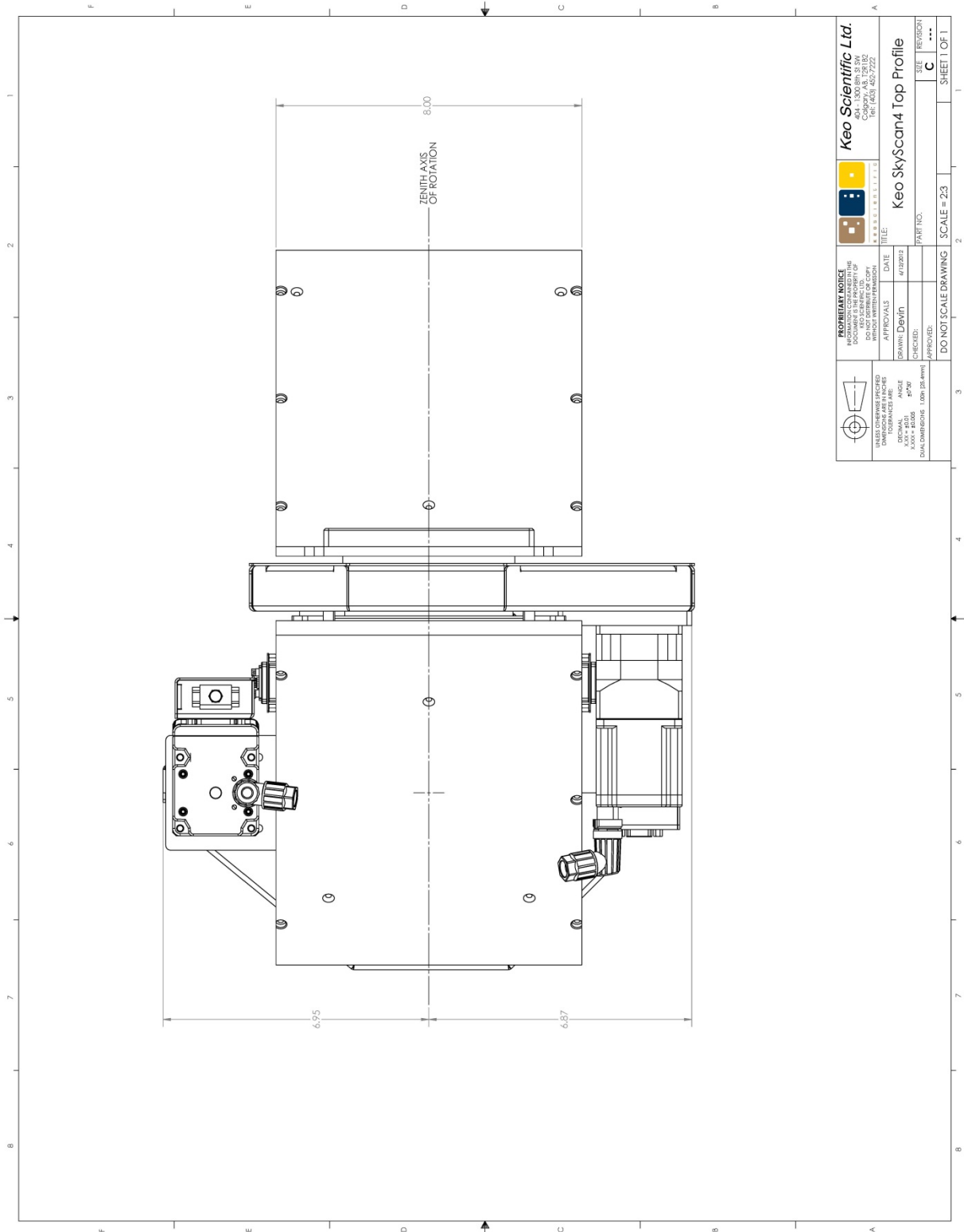
	Keo Scientific Ltd. 404 - 1300 8th St SW Calgary, AB, T2R 1B2 Tel: (403) 452-7222	
	TITLE: SkyScan4 MkIII Mounting Flange	
PROPRIETARY NOTICE INFORMATION CONTAINED IN THIS DOCUMENT IS THE PROPERTY OF KEO SCIENTIFIC LTD. IT IS TO BE KEPT CONFIDENTIAL AND NOT TO BE REPRODUCED OR COPIED WITHOUT WRITTEN PERMISSION.	APPROVALS DRAWN: DevIn CHECKED: APPROVED:	DATE 6/12/2012
UNLESS OTHERWISE SPECIFIED DIMENSIONS ARE IN INCHES TOLERANCES ARE: DECIMAL .001 FRACTIONAL .005 ANGLES .5°/30' DUAL DIMENSIONS 1.00mm (25.4mm)	PART NO. 01186	SIZE A REVISION ...
DO NOT SCALE DRAWING		SCALE = 1:2
SHEET 1 OF 1		SHEET 1 OF 1

Side Profile



<p>Keo Scientific Ltd. 454-1300 BIRCH ST CHESTER, AB 1791 6Z UK (01243) 8257222</p>		<p>Keo SkyScan4 Side Profile</p>	
<p>PROPRIETARY NOTICE THIS DOCUMENT IS THE PROPERTY OF KEO SCIENTIFIC LTD. DO NOT DISTRIBUTE OR COPY WITHOUT PERMISSION</p>		<p>DATE: 6/19/2012</p>	<p>SIZE: C</p>
<p>APPROVALS:</p>	<p>DRAWN: Devlin</p>	<p>CHECKED:</p>	<p>REVISION:</p>
<p>UNLESS OTHERWISE SPECIFIED DIMENSIONS ARE IN MILLIMETERS TOLERANCES ARE: XXXX ± 0.008 P20 XXXX ± 0.025 P30 DIMENSIONS: 1.0mm (24.0mm)</p>		<p>DO NOT SCALE DRAWING</p>	<p>SCALE = 2:3</p>
<p>PART NO.:</p>		<p>SHEET 1 OF 1</p>	

Top Profile



This page is intentionally blank.

Appendix C Bluetooth Adaptor Configuration

- 1) Install ParaniWIN using the installer found on the Documentation and Utilities CD in the *Utilities\ParaniWIN* folder.
- 2) Check the DIP switches on both adaptors and ensure they are in the ON-ON-OFF-OFF positions as shown below. This will set the device Baud rates to 115.2k and disable hardware flow control.

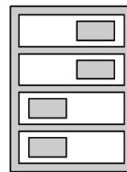


Figure 9: Correct DIP Switch Positions

- 3) Plug the SD1000U into an available USB port and then hold down RESET button for at least 1 second. You will need a small pointy object to press the button – a paper clip works perfectly.
- 4) Attach the SD200 to an available serial port with a regular serial cable (or simply plug it directly into a serial port with no cable) and use the USB power adaptor for power. Turn the power switch ON and hold down the RESET button for at least 1 second.
- 5) Open an instance of ParaniWIN and choose the COM port of the SD1000U. Set **BaudRate** to *115200*, **Parity** to *None*, and **StopBit** to *1*. Click **OK**. ParaniWIN will connect and display the Device Information page as shown in Figure 10.

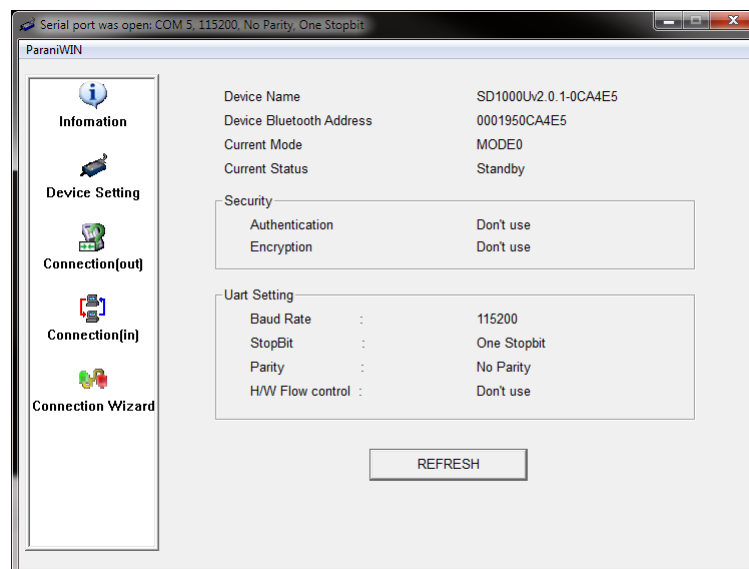


Figure 10: SD1000U Device Information Settings Page

- 6) Open a second instance of ParaniWIN and choose the COM port of the SD200. Set **BaudRate** to **115200**, **Parity** to **None**, and **StopBit** to **1**. Click **OK**. ParaniWIN will connect and display the Device Information page as shown in Figure 11.

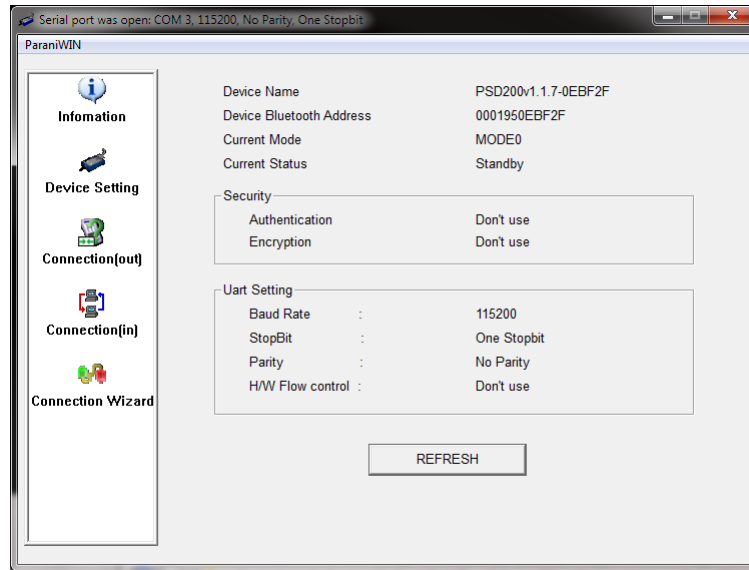


Figure 11: SD200 Device Information Settings Page

- 7) On the SD200 instance of ParaniWIN, change to the **Connection(in)** settings page and click **Start** at the bottom. This will make the device discoverable to other Bluetooth adaptors. You will now have 300 seconds (5 minutes) to find and connect to this device.

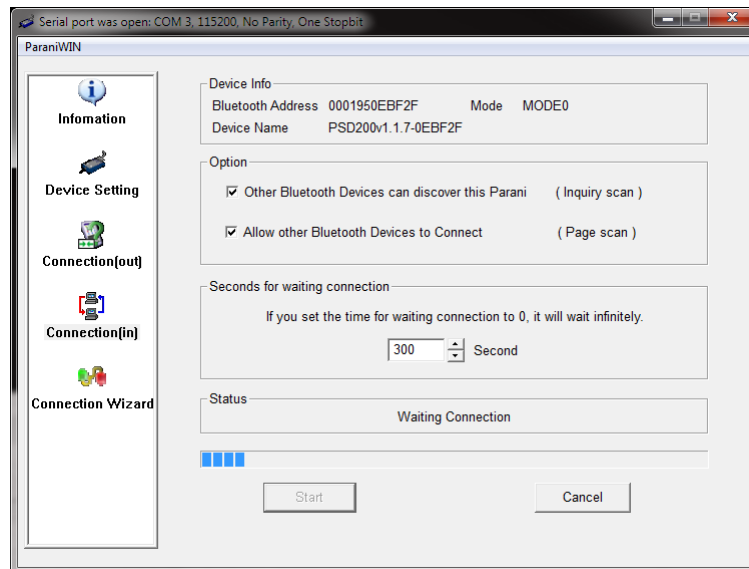


Figure 12: SD200 Waiting for Connection

- 8) On the SD1000U instance of ParaniWIN, change to the **Connection(out)** settings page and click **Search** button. This will scan for any Bluetooth devices that are accepting connections. The SD200 device should be found and listed in the **Search Result** table. It will be the one starting with *PSD200[...]*.

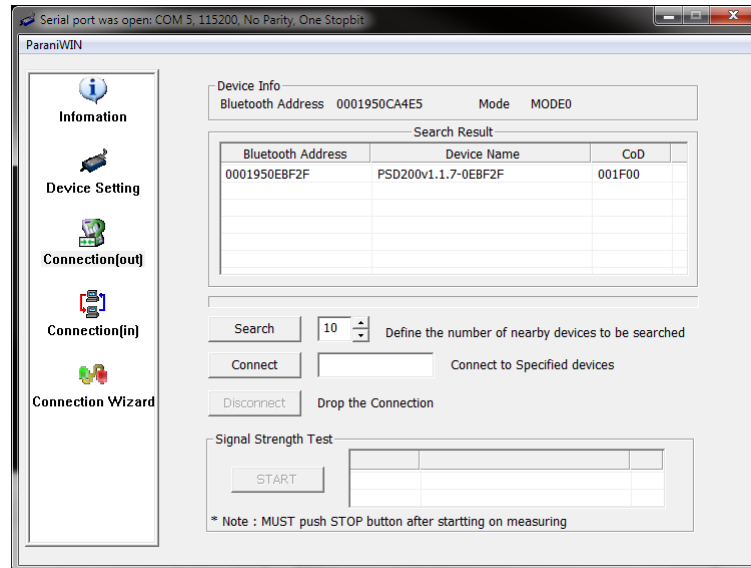


Figure 13: SD1000U Connection(out) Settings Page

- 9) Select the SD200 device in the **Search Result** list and click the **Connect** button. You should get the following dialog box in both instances of ParaniWIN. Click **OK** to dismiss these dialogs.

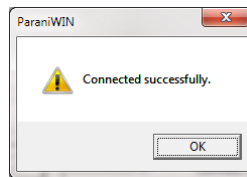


Figure 14: ParaniWIN Connection Successful Dialog

- 10) Now click the **Disconnect** button on the **Connection(out)** settings page in both instances of ParaniWIN. This will force the adaptors to drop their connections to each other. This is necessary to change the rest of the settings.
- 11) Switch to the **Device Setting** settings page in both instances of ParaniWIN.

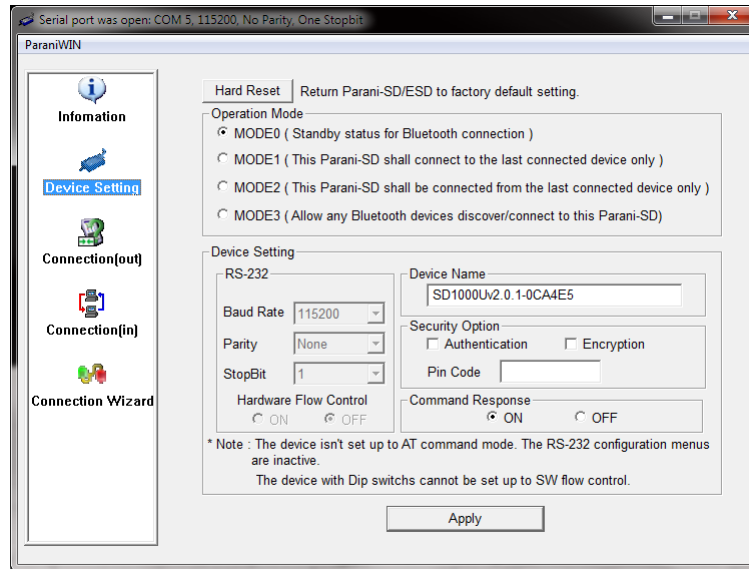


Figure 15: SD1000U Device Setting Page

- 12) In the SD200 instance of ParaniWIN, change the **Operation Mode** to *MODE2*, the **Command Response** option to *OFF*, and then click the **Apply** button. You will get the dialog shown in Figure 16 indicating success. Click **OK** to dismiss this dialog.

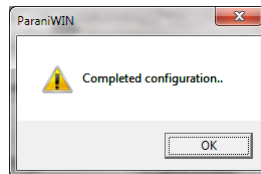


Figure 16: ParaniWIN Configuration Complete Dialog

- 13) In the SD1000U instance, change the **Operation Mode** to *MODE1*, the **Command Response** option to *OFF*, and then click the **Apply** button. You will get the dialog shown in Figure 16 indicating success. Click **OK** to dismiss this dialog.

Note

The settings dialogs will now be disabled because we turned off command response. To change any of these settings, restart ParaniWIN and attempt to connect to the device. It will inform you that command response is turned off and that it will be enabled so you can use ParaniWIN. After making any changes remember to set **Command Response** to *OFF* before closing ParaniWIN.

- 14) Close both instances of ParaniWIN. The Connect LED on the adaptors should now be illuminated (either solid or blinking depending on the device – see the user manuals for details on what the different LED statuses mean).
- 15) The SD200 adaptor can now be detached from the serial port and re-attached to the SkyScan azimuth axis.

Appendix D Firmware Update Procedure



Important Information

Only perform this procedure if you have been instructed to do so by Keo Scientific (by way of a firmware update advisory) and are fully comfortable with the procedure. Additional guidance can be provided by Keo Scientific.

This procedure requires the use of Animatics' SmartMotor Interface (SMI) application. This application can be installed from the Documentation and Utilities CD by navigating to *Utilities\SmartMotor Interface* and running the installer. Alternatively, the latest version of SMI can be downloaded directly from Animatics from the following website:

<http://www.animatics.com/products/software/animatics/host-software/smi-smartmotor-interface.html>

After SMI has been successfully installed, continue with the instructions below.

- 1) Remove the SD200 Bluetooth adaptor from the azimuth axis of the SkyScan. Programming of the SmartMotors must be done over a hardwired connection.
- 2) Attach one end of a NULL modem cable to the azimuth axis of the SkyScan and the other end to the host computer.
- 3) Power cycle the SkyScan.
 - a. Turn the power supply OFF.
 - b. Wait 5 seconds.
 - c. Turn the power supply ON.
- 4) After the SkyScan has completed its homing routine, launch the SMI application.
- 5) Now click on **View** and make sure that the **Terminal**, **Configuration**, and **Serial Data Analyzer** windows are checked. Your application layout should now look like the one in Figure 18.
- 6) In the **Configuration** window, right-click on the serial port you connected the SkyScan to (with the NULL modem serial cable) and select **Properties**. The dialog shown in Figure 17 will be displayed.

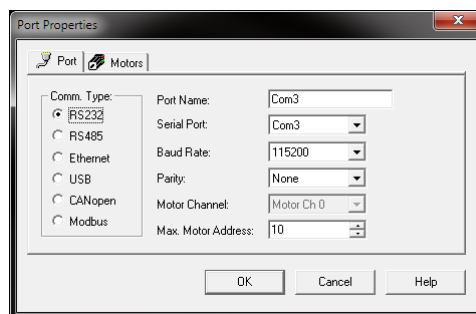


Figure 17: SMI Port Properties

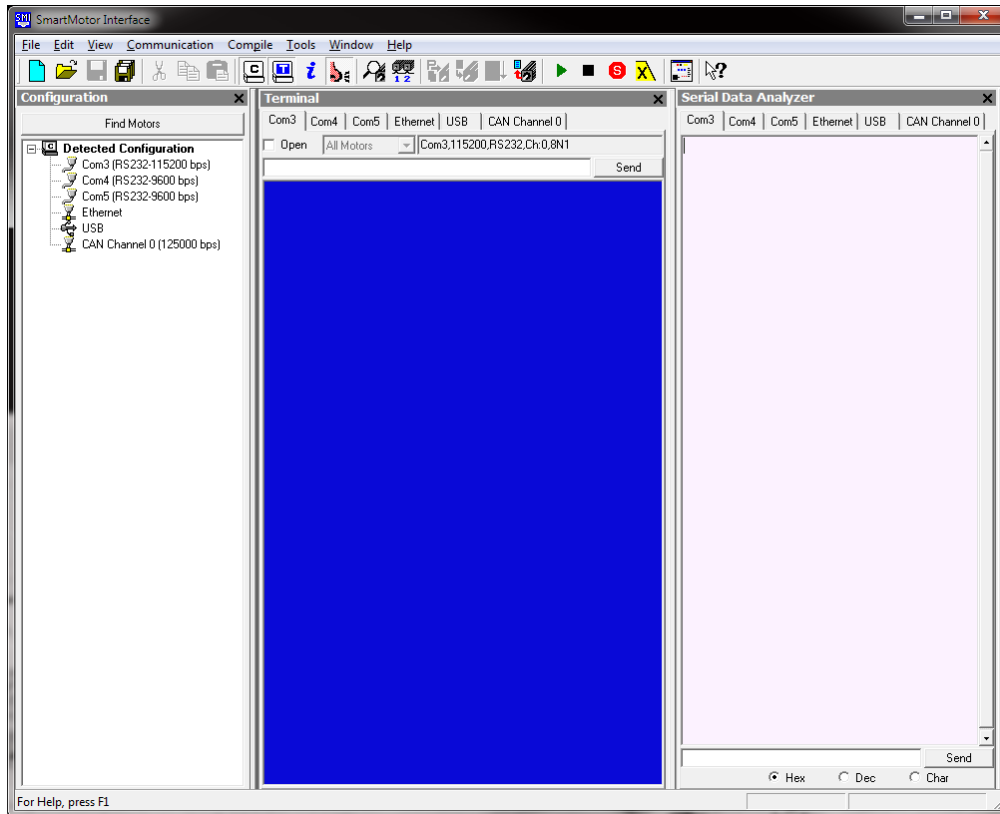


Figure 18: SMI View Layout

- 7) Ensure that the **Comm Type** setting is set to **RS232** and change the **Baud Rate** to **115200**. Click **OK** to save and close these settings.
- 8) In the **Terminal** window, select the tab corresponding to the serial port you are using. In this example we are using COM3 so we have selected the **Com3** tab.

Before we can update the firmware we need to kick the SkyScan out of custom command mode. To do this we need to send it the `X!` command. If you have a serial terminal application (like TeraTerm) that you are comfortable using, then simply send `X!<CR>`. It will respond with a 1 indicating the command was successful. Skip to step 14 to continue the firmware update. If you don't have a serial terminal application installed you can use SMI to send this command. Continue with the instructions below.

- 9) Select the **Open** check box to open the serial port.
- 10) In the **Serial Data Analyzer** window, select the **Hex** radio button at the bottom. This will allow us to send characters specified in hexadecimal to the SkyScan. We need to do this because the SkyScan requires a carriage return at the end of the command but SMI doesn't use carriage returns. We will be adding the carriage return as a hexadecimal number.
- 11) In the **Serial Data Analyzer** window, find the string entry box which is just to the left of the **Send** button. Enter the following in this box.

58210D

SMI will format the entry into three 2 digit hex numbers as you type in the string as shown in Figure 19.. For those interested, these three hex numbers (58, 21, and 0D) are the ASCII character codes for the characters X, !, and <CR>.



Figure 19: SMI Hex String Entry

- 12) Click the **Send** button. This will transmit the character string to the SkyScan. The command you just sent will now appear as **green** text in the **Serial Data Analyzer** window. Below it you should also see some **blue** text. This is the response from the SkyScan. If everything went as planned it should read "31 0D" (which is "1<CR>" when converted to ASCII characters). If this is not the response you got, power cycle the SkyScan and after the homing routine has finished, try sending the command again (starting from step 11).

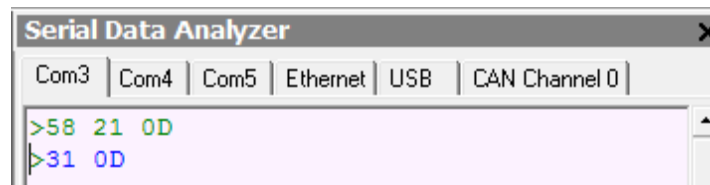


Figure 20: SMI Response to X!

- 13) Now close the **Serial Data Analyzer** window by either click the small 'x' in the corner or unchecking **Serial Data Analyzer** from the **View** menu.
- 14) You are now ready to upload the new firmware to the SkyScan. Locate the .zip file provided by Keo Scientific and extract it to a known location. You will notice that there are two files in this .zip file. One is the firmware for the azimuth axis, and the other is the firmware for the zenith axis.
- 15) In SMI, click **Communication** from the top menu, and then click **Transmit SMX file**
- 16) Now browse to the files you extracted in step 13, select the one with **Azimuth** at the end of the filename, and click **Open**.

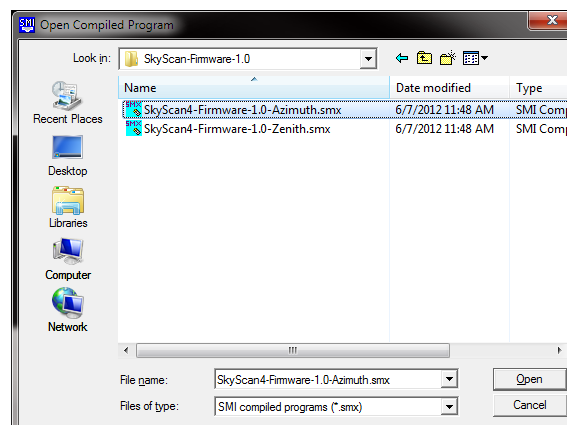


Figure 21: SMI Browse for SMX File

- 17) You will now be shown the **Select Motor** dialog. Select the serial port you are using in the **Ports** list and then enter the number **1** in the **Motor Address** box as shown in Figure 22.

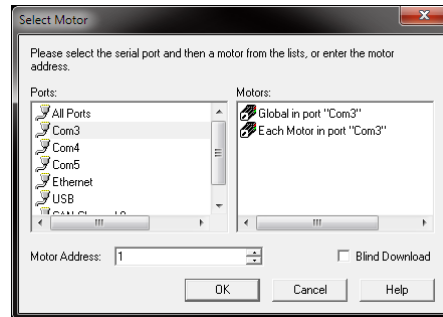


Figure 22: SMI Select Motor Dialog

- 18) Now click the **OK** button. This will upload the firmware file to the SmartMotor. During this process you should see a progress dialog like the one shown in Figure 23. When the upload finishes, you should see a “Finished. No Errors, No warnings.” message in the **Information** window at the bottom of SMI as shown in Figure 24.

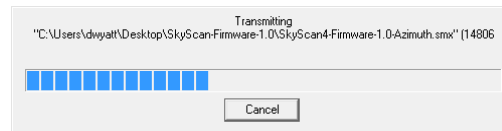


Figure 23: SMI Upload Progress

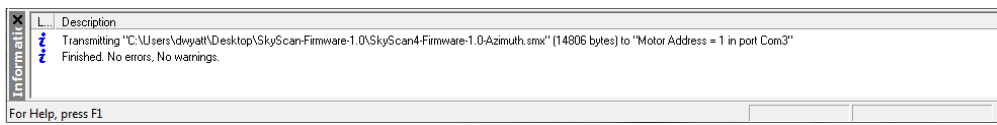


Figure 24: SMI Upload Finished

- 19) Now we need to repeat the firmware upload procedure for the zenith axis.
- a. First move the NULL modem serial cable from the azimuth axis to the zenith axis. The zenith axis does not have a custom command interpreter so it is not necessary to send the `X!<CR>` command.
 - b. Now repeat steps 15 through 18 with the following exceptions.
 - i. In step 16, select the file with **Zenith** at the end of the filename.
 - ii. In step 17, enter the number **2** in the **Motor Address** box.
- 20) After the zenith firmware has been uploaded, close SMI and power cycle the SkyScan. It should perform its homing routine as normal and then be ready to use.