



Short instruction in using PC-AXIS 98 for Windows

PC-AXIS 98 for Windows 9X and NT

Introduction

PC-AXIS 98 for Windows is a software for the management of large amount of statistics. In PC-AXIS it is possible to rearrange tables, establish local statistical databases and to export the tables into a variety of different file formats. Optional formats includes as well Excel as HTML for Internet or Intranet.

Statistics Sweden normally distribute PC-AXIS as an integrated part of a statistical product within the Internet or on CD-roms.

PC-AXIS was initially developed for the 1990 Population Census in Sweden. The further development is guided by an international PC-AXIS Reference Group with participants from other licensed PC-AXIS using NSI:s. Especially close is the co-operation between Statistics Sweden and Statistics Denmark. Statistics Denmark has not only developed parts of the software but also produced the origin of this User manual.

At the following pages some of the features and possibilities in PC-AXIS 98 for Windows are showed in the appearance of a cartoon.

This manual is especially developed for the 32-bits version of PC-AXIS. If you need a similar manual for the 16-bit version of PC-AXIS it can be ordered from Statistics Sweden on Fax: +46 8 7834899 or go to Statistics Denmarks Website: www.dst.dk.

Statistics Sweden / Statistics Denmark - May 1999.

List of Contents

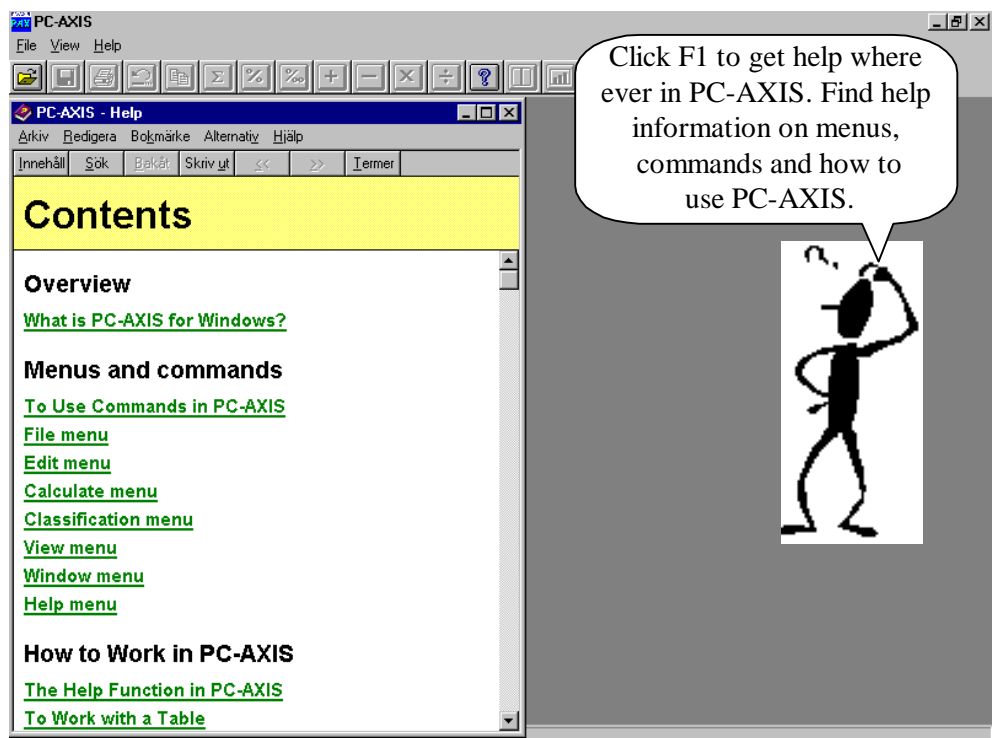
<i>Introduction</i>	<i>2</i>
<i>On PC-AXIS help functions.....</i>	<i>4</i>
<i>Open a database in PC-AXIS.....</i>	<i>5</i>
<i>Open a table in PC-AXIS.....</i>	<i>7</i>
<i>Using the table in another software</i>	<i>10</i>
<i>Save the table in another file format.....</i>	<i>11</i>
<i>Edit a table in PC-AXIS.....</i>	<i>13</i>
<i>To do simple calculations within PC-AXIS.....</i>	<i>15</i>
<i>Diagrams in PC-AXIS.....</i>	<i>17</i>
<i>Some more advanced options in PC-AXIS.....</i>	<i>19</i>
<i>Internet user interface to PC-AXIS on CD-roms</i>	<i>23</i>
<i>History.....</i>	<i>24</i>
<i>PC-AXIS international reference group</i>	<i>24</i>
<i>Contacts</i>	<i>24</i>

On PC-AXIS help functions



When the mouse indicator touches a tool-button explanatory information is showed.

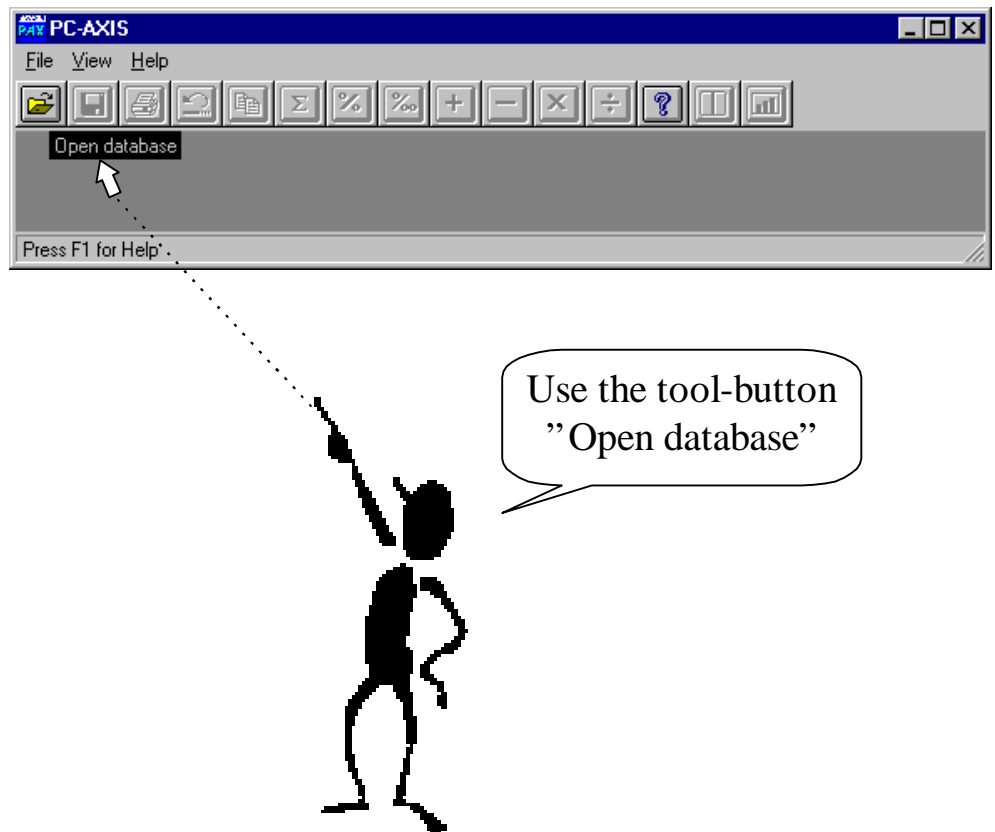
Use F1 for help



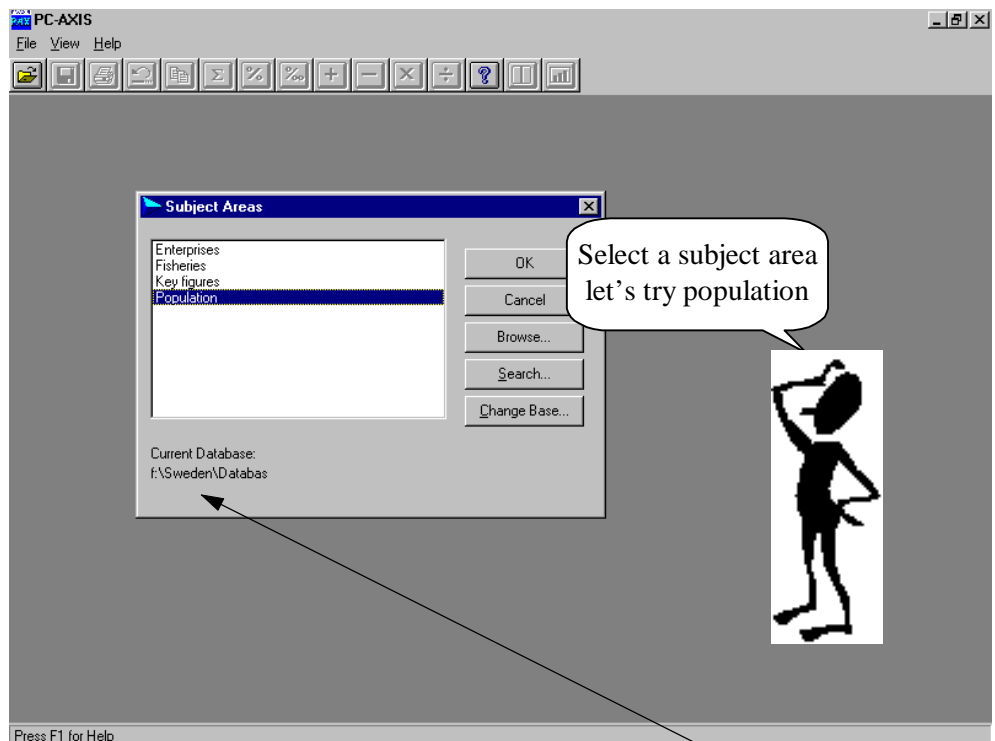
Click F1 to get help where ever in PC-AXIS. Find help information on menus, commands and how to use PC-AXIS.



Open a database in PC-AXIS



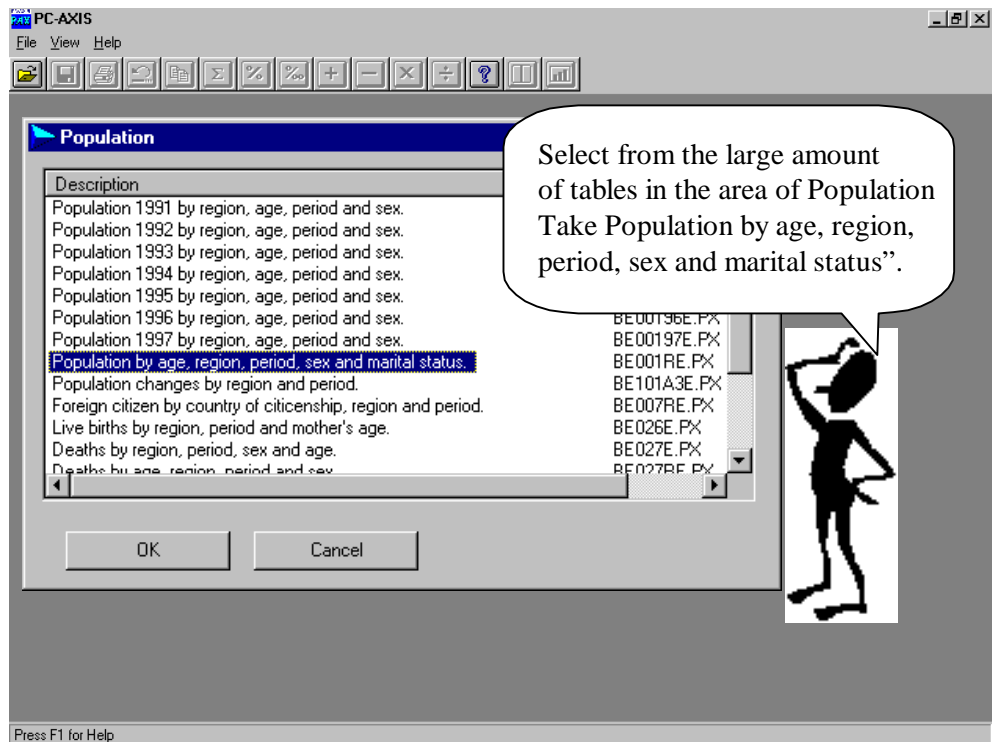
The Database contains several subject areas



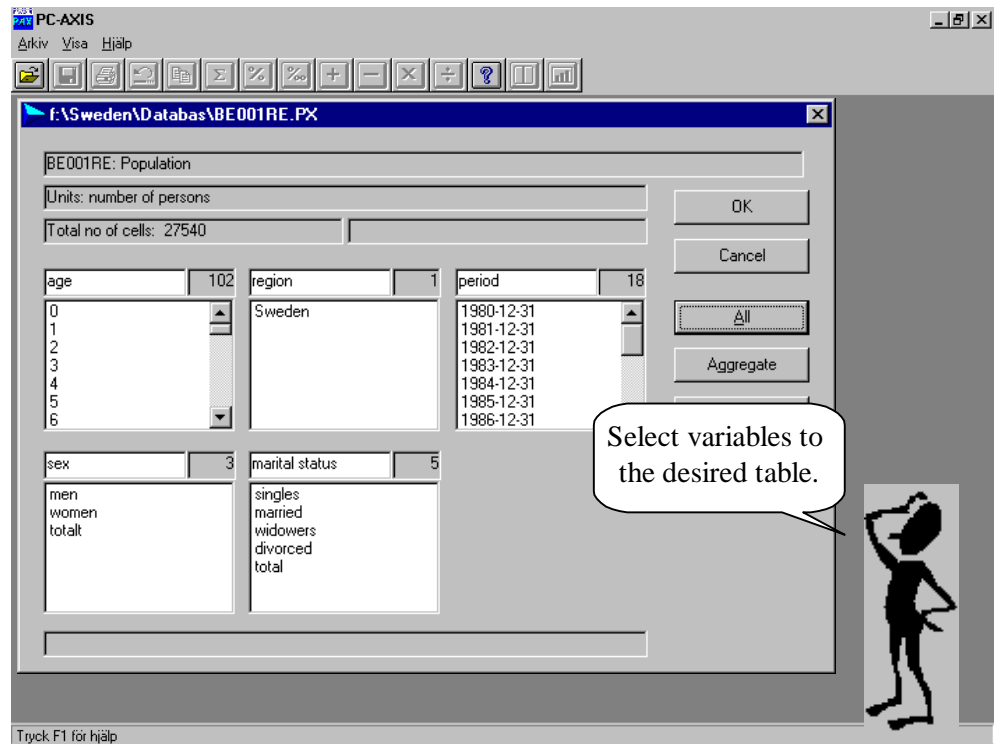
Change active database

In the bottom of the menu window you will find the active database. If you have access to more databases on a server or a cd-rom you can easily switch database. Click on the button "Change Base" and select another database. Use the option search to find a certain file..

Select a table



Open a table in PC-AXIS

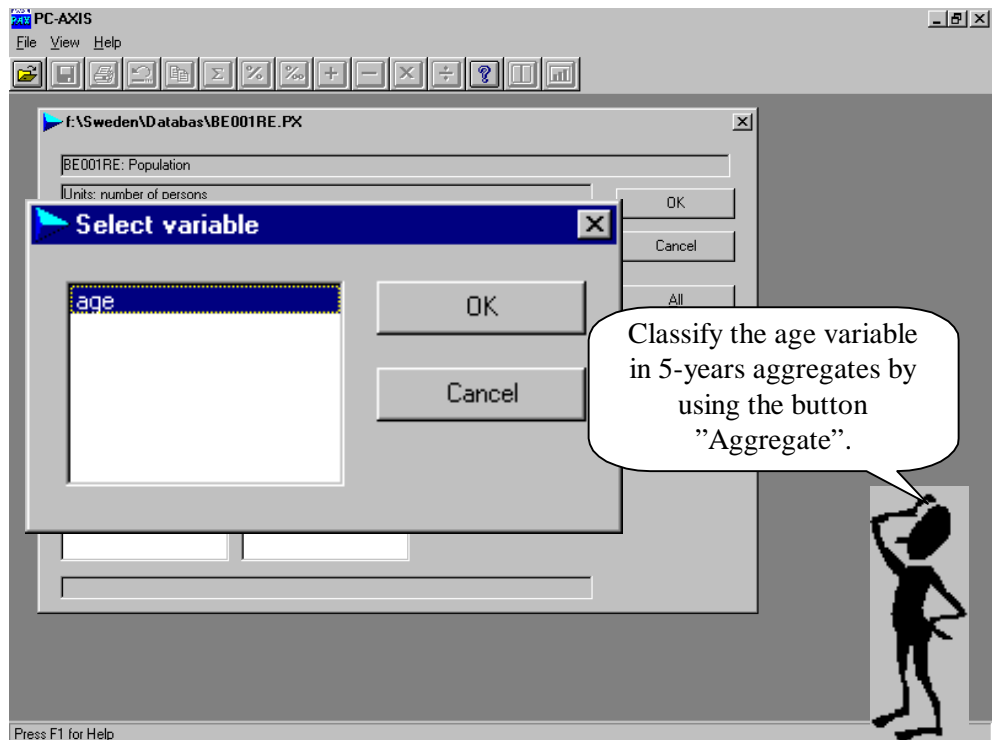


Select values from the variables in the table

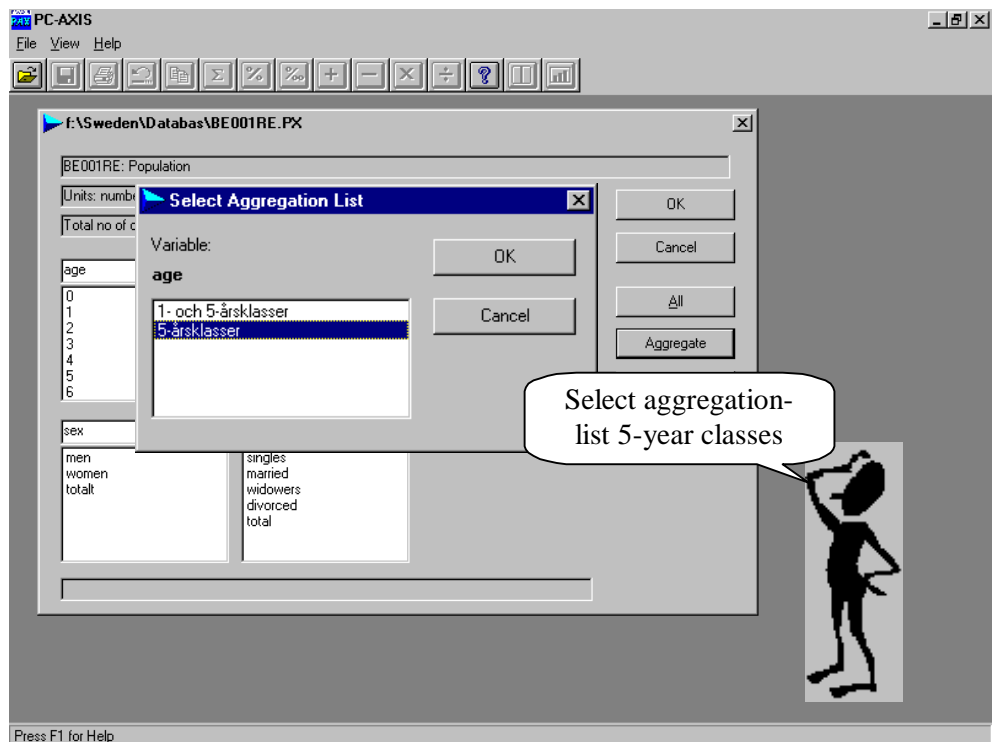
If you want all values from a variable just click on the name of the variable on the top of a list. By clicking on the variable name Marital status all values will be included in the table.

If certain values are to be selected you have to press **CTRL + left mouse button**. Only the selected values will appear in the table.

Aggregate values



Select aggregation list



Aggregation lists are linked to certain tables

The option to aggregate values differs from table to table. A table distributed on municipalities can optionally be aggregated on region.

Select values to the table

PC-AXIS

File View Help

F:\Sweden\Databas\BE001RE.PX

BE001RE: Population

Units: number of persons

Total no of cells: 5400 $20 * 1 * 2 * 3 * 1 = 120$

5-årsklasser: 20 region: Sweden period: 1992-1997

sex: men, women, totalt marital status: singles, married, widowers, divorced, totalt

Variable: period. Elimination not allowed

Press F1 for Help

A table in PC-AXIS


PC-AXIS - [F:\SWEDEN\DATABASES\BE001RE.PX]

File Edit Calculate View Window Help

	A	B	C	D	E	F	G
1	Population by 5-årsklasser, region, period, sex and marital status.						
2		Sweden			1992-12-31		
3		1992-12-31			1997-12-31		
4		Men	Women	Total	Men	Women	Total
5		Total	Total	Total	Total	Total	Total
6	0-4	310189	293395	603584	265400	253132	518532
7	5-9	261963	248369	510332	315363	298141	613504
8	10-14	252046	240012	492058	268386	254030	522416
9	15-19	274711	261346	536057	257486	245139	502625
10	20-24	296679	285209	581888	280269	269193	549462
11	25-29	333726	314388	648114	304492	293500	597992
12	30-34	296774	281290	578064	338412	319925	658337
13	35-39	299391	286923	586314	299124	285361	584485
14	40-44	314295	304108	618403	299046	288989	588035
15	45-49	338709	324946	663655	311369	303708	615077
16	50-54	256066	247613	503679	332321	322190	654511
17	55-59	208841	211351	420192	248786	244668	493454
18	60-64	199996	215140	415136	199351	207470	406821
19	65-69	197282	221764	419046	184535	207350	391885
20	70-74	184234	223506	407740	172223	207101	379324
21	75-79	133856	183654	317510	146367	197310	343677
22	80-84	86732	141990	228722	89944	144792	234736
23	85-89	37169	78544	115713	44358	90757	135115
24	90-94	10219	27979	38198	12673	35147	47820
25	95-	1707	5901	7608	2008	7809	9817

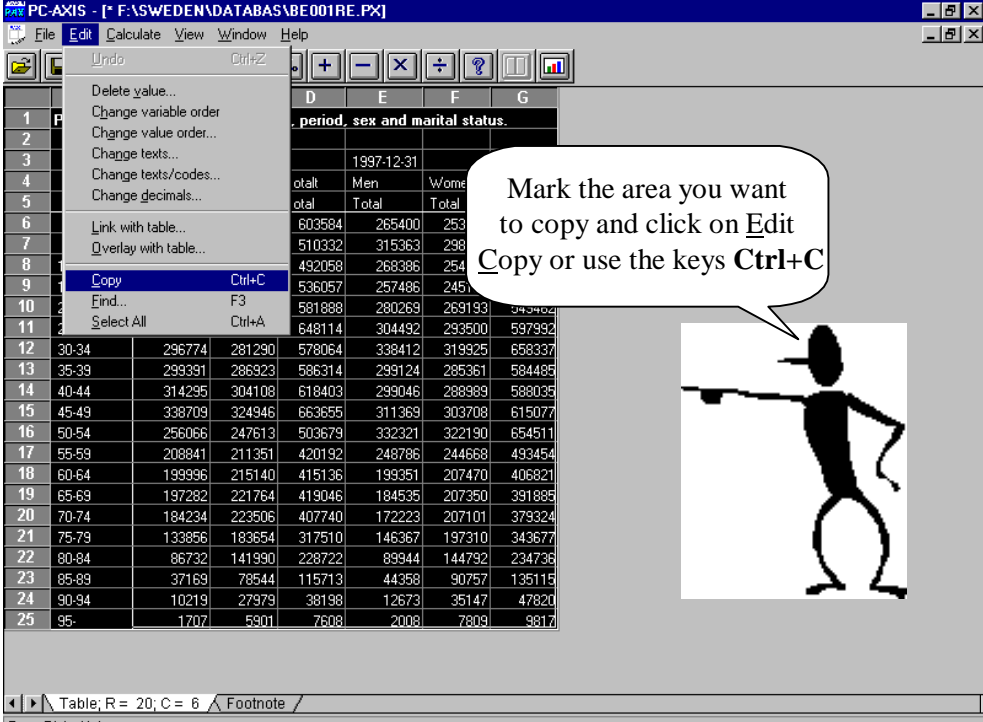
Table: R = 20; C = 6 Footnote

Press F1 for Help

Click on the sheet Footnot to get the footnotes for the very table. Available information is Latest update, Source, Contact, Units, Data type, Reference period, Database, Internal reference code. There might even be certain information on the material, a variable or a value of a variable. Further information is available on a material accessible through the tool-button  if it is activated. When using this button a linked document will be automatically opened in your word processor.

Using the table in another software

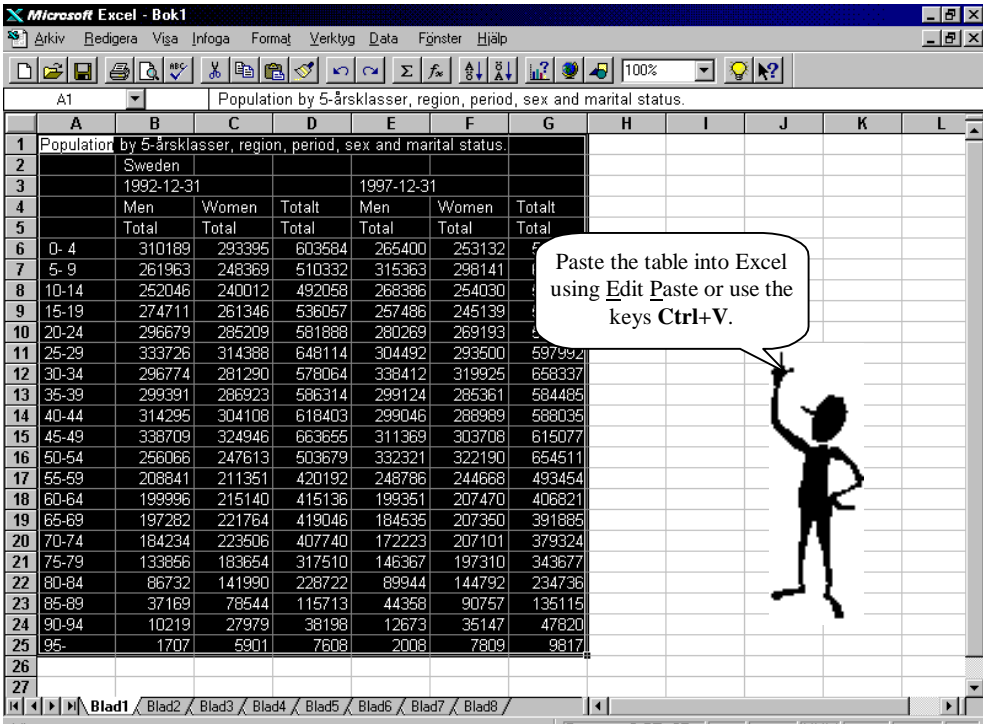
Copy the table into another software....



Mark the area you want to copy and click on **Edit Copy** or use the keys **Ctrl+C**

	D	E	F	G
1	period, sex and marital status.			
2				
3	1997-12-31			
4	total	Men	Women	
5	total	Total	Total	
6	603584	265400	253132	
7	510332	315363	298141	
8	492058	268386	254030	
9	536057	257486	245139	
10	581888	280269	269193	
11	648114	304492	293500	
12	578064	338412	319925	
13	586314	299124	285361	
14	618403	299046	288989	
15	663655	311369	303708	
16	503679	332321	322190	
17	420192	248786	244668	
18	415136	199351	207470	
19	419046	184535	207350	
20	407740	172223	207101	
21	317510	146367	197310	
22	228722	89944	144792	
23	115713	44358	90757	
24	38198	12673	35147	
25	7608	2008	7809	

.. like Excel



Paste the table into Excel using **Edit Paste** or use the keys **Ctrl+V**.

	A	B	C	D	E	F	G	H	I	J	K	L
1	Population by 5-årsklasser, region, period, sex and marital status.											
2												
3												
4												
5												
6	0- 4	310189	293395	603584	265400	253132						
7	5- 9	261963	248369	510332	315363	298141						
8	10-14	252046	240012	492058	268386	254030						
9	15-19	274711	261346	536057	257486	245139						
10	20-24	296679	285209	581888	280269	269193						
11	25-29	333726	314388	648114	304492	293500						
12	30-34	296774	281290	578064	338412	319925						
13	35-39	299391	286923	586314	299124	285361						
14	40-44	314295	304108	618403	299046	288989						
15	45-49	338709	324946	663655	311369	303708						
16	50-54	256066	247613	503679	332321	322190						
17	55-59	208841	211351	420192	248786	244668						
18	60-64	199996	215140	415136	199351	207470						
19	65-69	197282	221764	419046	184535	207350						
20	70-74	184234	223506	407740	172223	207101						
21	75-79	133856	183654	317510	146367	197310						
22	80-84	86732	141990	228722	89944	144792						
23	85-89	37169	78544	115713	44358	90757						
24	90-94	10219	27979	38198	12673	35147						
25	95-	1707	5901	7608	2008	7809						

Save the table in another file format

PC-AXIS - [* F:\SWEDEN\DATABASES\BE001RE.PX]

File Edit Calculate View Window Help

Open Database... Ctrl+O
Import... Ctrl+I
Close
Save Ctrl+S
Save as...
Page layout...
Print... Ctrl+P
Maintenance...
Database contents...
New directory...
Classification
Excel
1 C:\TEMP\W0R38EHC.PX
1 C:\TEMP\SW04.PX
1 F:\SERVER\DATABASES\AM0201A2.PX
1 F:\Database\AM0101A1.PX
Exit

and marital status.

	Women	Total
7-12-31		
265400	253132	518532
315363	298141	613504
268386	254030	522416
257486	245139	502625
280269	269193	549462
304492	293500	597992
338412	319925	658337
299124	285361	584485
299046	288989	588035
311369	303708	615077
332321	322190	654511
248786	244668	493454
199351	207470	406821
184535	207350	391885
172223	207101	379324
146367	197310	343677
89944	144792	234736
44358	90757	135115
12673	35147	47820
2008	7809	9817

Save the table using File, Save as

Table: R = 20; C = 6 Footnote

Using convert and save in another file format...

PC-AXIS - [* F:\SWEDEN\DATABASES\BE001RE.PX]

File Edit Calculate View Window Help

Save To

To Database Convert

File Name: BE001RE.xls

Directories: c:\PROGRAM\PCAW32

PROGRAM
PCAW32

Drives: c:

File Format: Excel 5.0 (*.xls)
Excel 2.1 (*.xls)
Lotus (*.wk1)
dBase (*.dbf)
PC-AXIS file (*.px)

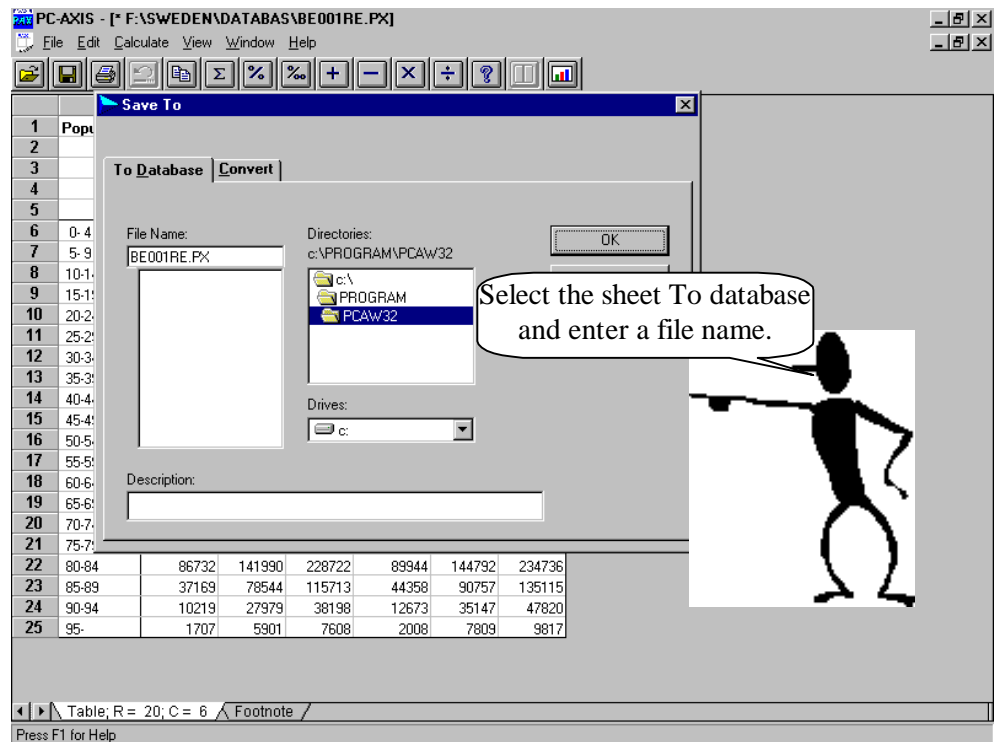
Save the file as an Excel file or select any of the other file formats

80-84	86732	141990	228722	89944	144792	234736
85-89	37169	78544	115713	44358	90757	135115
90-94	10219	27979	38198	12673	35147	47820
95-	1707	5901	7608	2008	7809	9817

Table: R = 20; C = 6 Footnote

Press F1 for Help

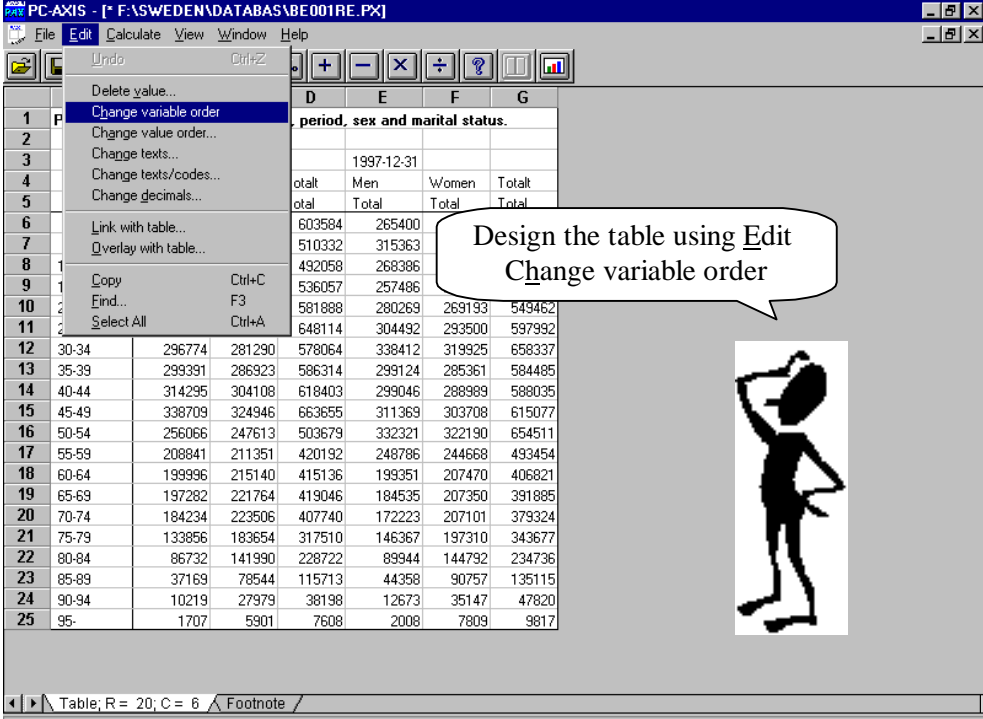
...or save the table in
your own database on
the hard-disk



In this option the table is saved in the selected database in the subject area "Population".

Edit a table in PC-AXIS

To edit the Heading and Stub

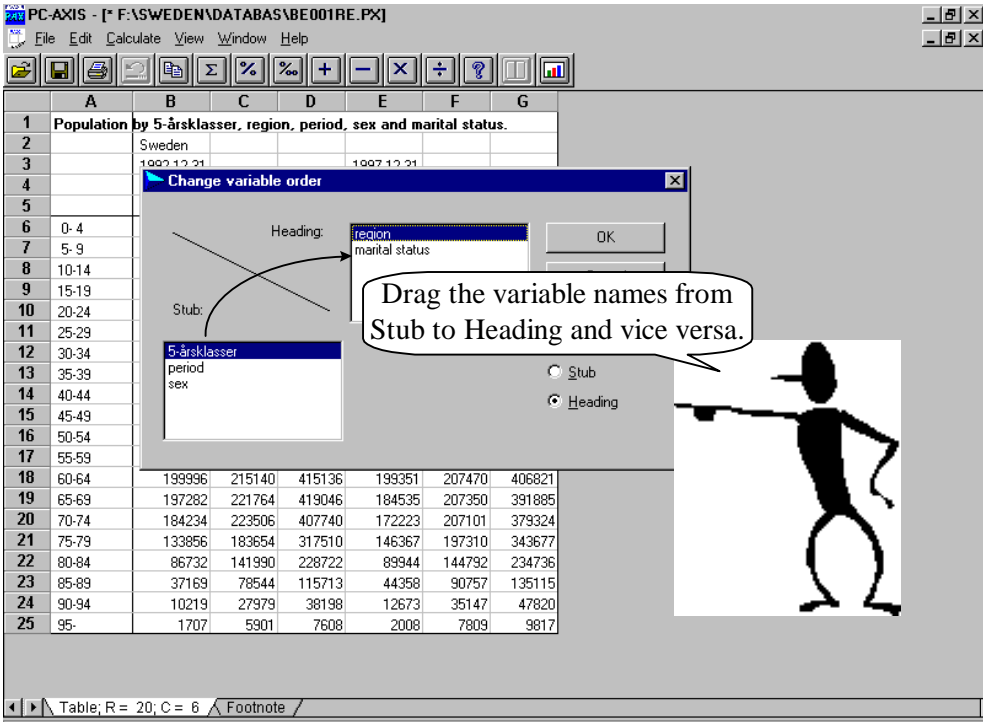


Design the table using Edit
C variable order

period, sex and marital status.			
	1997-12-31		
total	Men	Women	Total
total	Total	Total	Total
603584	265400		
510332	315363		
492058	268386		
536057	257486		
581888	280269	269193	549462
648114	304492	293500	597992
578064	338412	319925	658337
586314	299124	285361	584485
618403	299046	288989	588035
663655	311369	303708	615077
503679	332321	322190	654511
420192	248786	244668	493454
415136	199351	207470	406821
419046	184535	207350	391885
407740	172223	207101	379324
317510	146367	197310	343677
228722	89944	144792	234736
115713	44358	90757	135115
38198	12673	35147	47820
7608	2008	7809	9817

Table: R = 20; C = 6 / Footnote /

Drag and drop variables using the mouse

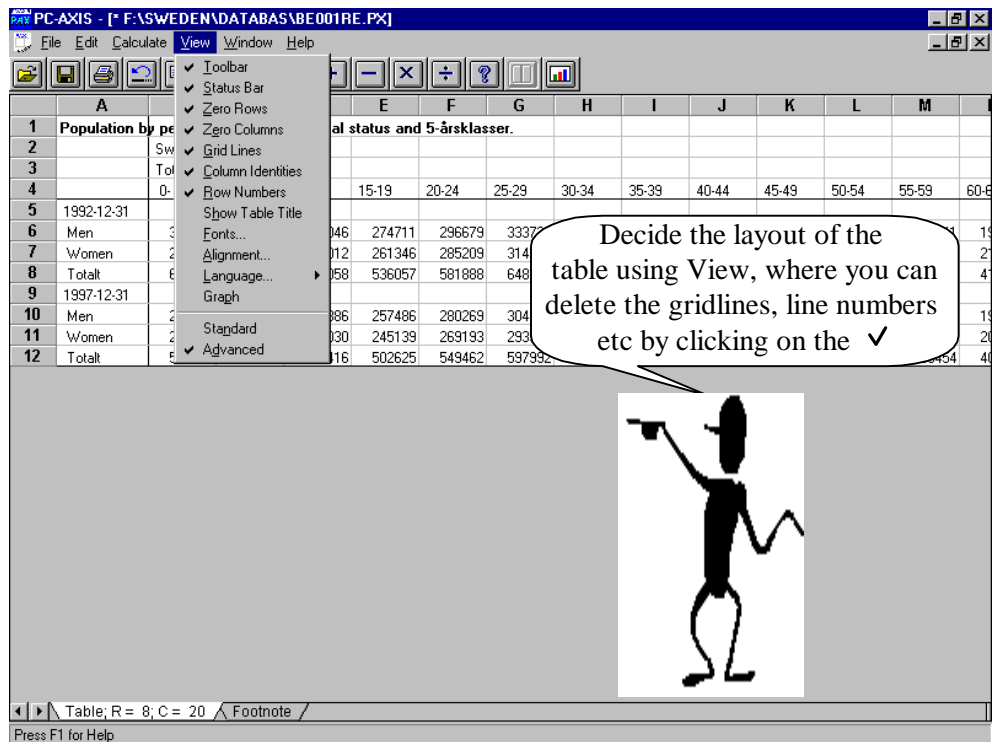


Drag the variable names from Stub to Heading and vice versa.

Population by 5-årsklasser, region, period, sex and marital status.						
	Sweden					
	1997-12-31			1997-12-31		
0-4						
5-9						
10-14						
15-19						
20-24						
25-29						
30-34						
35-39						
40-44						
45-49						
50-54						
55-59						
60-64	199996	215140	415136	199351	207470	406821
65-69	197282	221764	419046	184535	207350	391885
70-74	184234	223506	407740	172223	207101	379324
75-79	133856	183654	317510	146367	197310	343677
80-84	86732	141990	228722	89944	144792	234736
85-89	37169	78544	115713	44358	90757	135115
90-94	10219	27979	38198	12673	35147	47820
95-	1707	5901	7608	2008	7809	9817

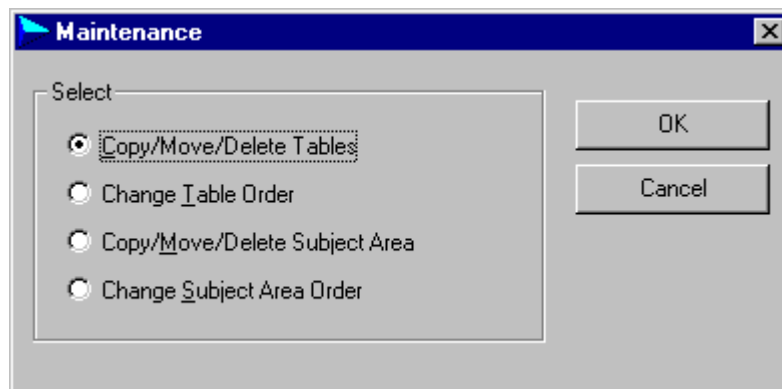
Table: R = 20; C = 6 / Footnote /

Editing the table layout



Copy, move, or delete tables and subject areas

Copy, move or delete a table or a subject area using File Maintenance.



- Copy, move or delete a table within a subject area. Select Copy/Move/Delete Tables in the dialogue box Maintenance. Select "Population" and delete, move or copy one of the tables
- Set up your own order of the tables within a subject area. Select Change order on tables. Move the most used table within "Population" to the top of the list.
- Copy, move or delete a subject area in PC-AXIS. Select Copy/Move/Delete Subject Area. Copy the Subject Area "Population" into a new database.
- Make up your own order of the subject areas. Select Change Subject Area Order. Let the subject area "Population" be the first subject area.

To do simple calculations within PC-AXIS

PC-AXIS - [* F:\SWEDEN\DATABASES\BE001RE.PX]

File Edit Calculate View Window Help

Sum...
Per cent...
Per 1000...
Add...
Subtract...
Multiply...
Divide...
Add table...
Subtract table...
Multiply table...
Divide table...

1 Population by period, sex, region, marital status and 5-årsklasser.
2
3
4
5 1992-1997-1
6 Men
7 Women
8 Total
9 1997-1
10 Men
11 Women
12 Total

10-14 15-19 20-24 25-29 30-34 35-39 40-44 45-49 50-54 55-59 60-64


963 252046 274711 296679 33372 19
9369 240012 261346 285209 31438 2
9332 492058 536057 581888 64811 4

265400 315363 268386 257486 280269 304492 338412 299124 299046 311369 22321 248786 19
253132 298141 254030 245139 269193 293500 319925 285361 22190 244668 20
518532 613504 522416 502625 549462 597992 658337 584485 54511 493454 40

Table: R = 8; C = 20 Footnote /

Press F1 for Help

The pull down menu Calculate exposes the calculation options.



Calculate Per cent

PC-AXIS - [* F:\SWEDEN\DATABASES\BE001RE.PX]

File Edit Calculate View Window Help

Select Base for Per cent Calculation

period 2
1992-12-31
1997-12-31

sex 3
men
women
total

region 1
Sweden

OK
Cancel

marital status 1
total

15-19 20-24 25-29 30-34

45-49 50-54 55-59 60-64

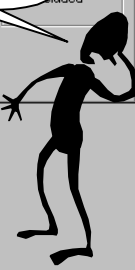
338709 256066 208841 19
324946 247613 211351 2
663655 503679 420192 4

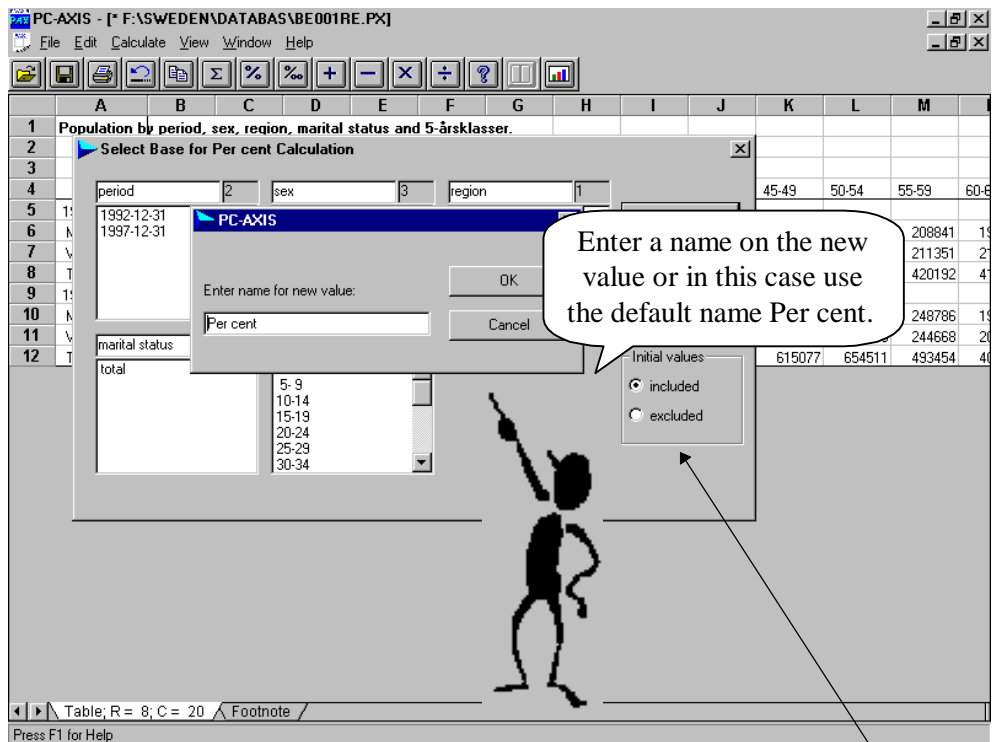
311369 332321 248786 19
303708 322190 244668 20
615077 654511 493454 40

Table: R = 8; C = 20 Footnote /

Press F1 for Help

Calculate the ratio of male and female. Select Calculate Per cent and use the total of sex as the base for the calculation.





If you just want the resulting per cent to remain in the table use "exclude" in the area "Initial values".

Now the per centages are inserted into the table.

Population by period, sex, region, marital status and 5-årsklasser.												
Distribution by number of persons and Per cent.												
	Sweden											
	Total	0-4	5-9	10-14	15-19	20-24	25-29	30-34	35-39	40-44	45-49	50-54
1992-12-31												
Number of persons												
Men	310189	261963	252048									
Women	293395	248369	240012									
Total	603584	510332	492058									
Per cent												
Men	51,39	51,33	51,22									
Women	48,61	48,67	48,78									
Total	100	100	100									
1997-12-31												
Number of persons												
Men	265400	315363	268386	257486	280269	304492	338412	299785	293046	311369	332321	248781
Women	253132	298141	254030	245139	269193	293500	319925	285784	288989	303708	322190	244681
Total	518532	613504	522416	502625	549462	597992	658337	585569	582035	615077	654511	493462
Per cent												
Men	51,18	51,4	51,37	51,23	51,01	50,92	51,4	51,18	50,86	50,62	50,77	50,0
Women	48,82	48,6	48,63	48,77	48,99	49,08	48,6	48,82	49,14	49,38	49,23	49,0
Total	100	100	100	100	100	100	100	100	100	100	100	100

Change textual information in the table

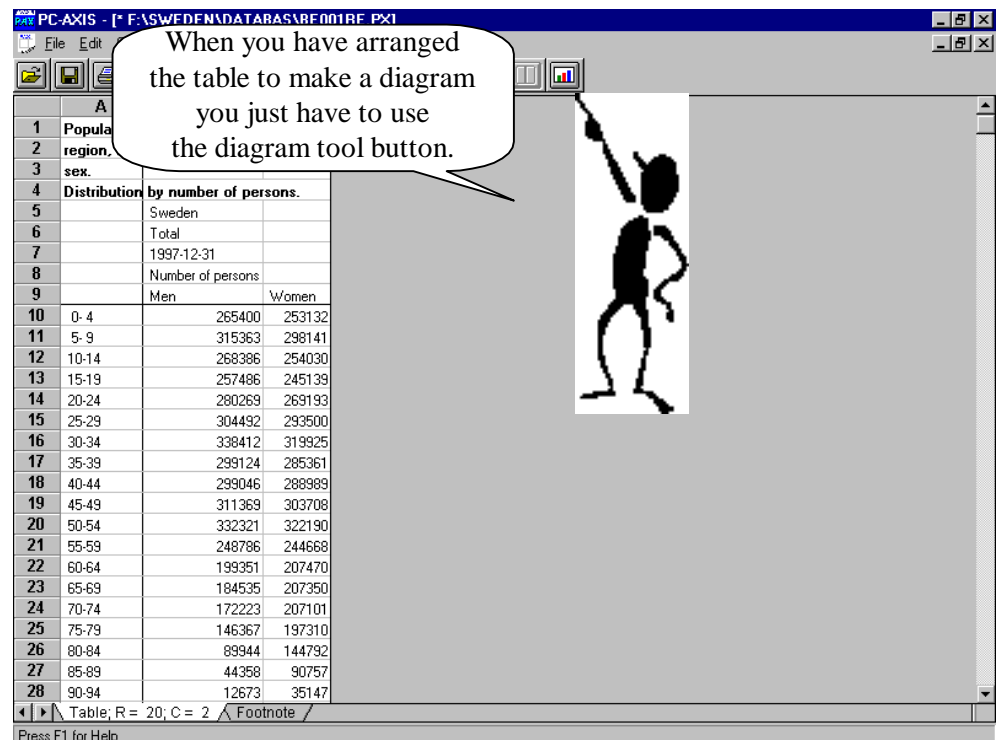
To change the textual information in the stub and heading use Edit, Change texts.

Mark the value you want to change. Enter the new text and press **Enter**.

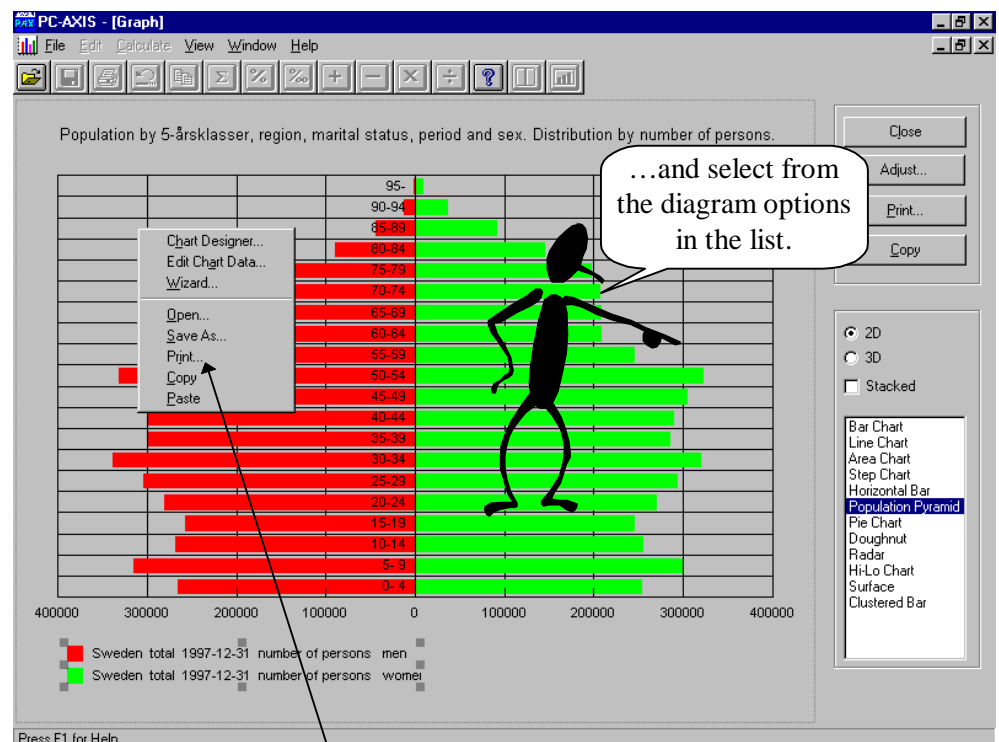
Diagrams in PC-AXIS

The tables in PC-AXIS can be presented in a diagram according to a number of diagram types.

Use the Diagram tool button...



...and select your choice of a diagram



By clicking the **right mouse button** it is possible to edit the diagram. There are options to change texts, characters, color etc.

Notice

It must be noticed that certain diagrams are based upon a certain number of columns or variables to be presented. The population pyramid is based on a table consisting of two columns as showed above.

Some more advanced options in PC-AXIS

PC-AXIS and other softwares

In PC-AXIS there is an option to link the active table in PC-AXIS direct into another software. The software will automatically be initialised by PC-AXIS and the table is transferred into the software such as Exccel or Lotus.

Link to another software

PC-AXIS - [F:\SWEDEN\DATABASES\BE001RE.PX]

File Edit Calculate View Window Help

✓ Toolbar
✓ Status Bar
✓ Zero Rows
✓ Zero Columns
✓ Grid Lines
✓ Column Identities
✓ Row Numbers
Show Table Title
Fonts...
Alignment...
Language...
Graph
Standard
✓ Advanced

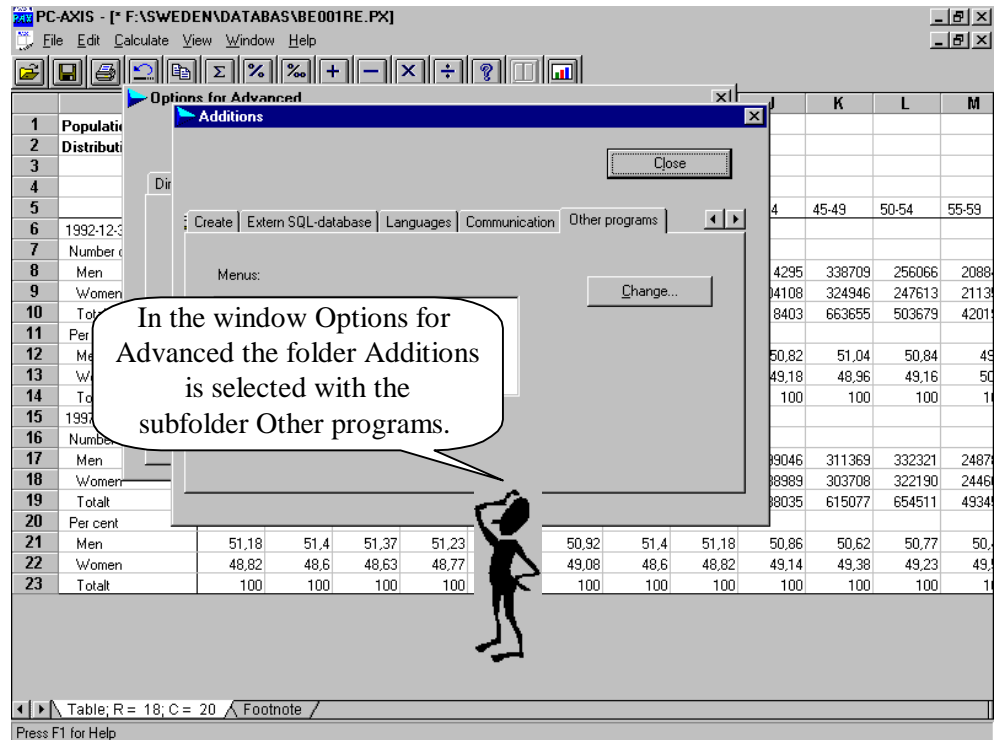
1 Population by pe
2 Distribution by n
3
4
5
6 1992-12-31
7 Number of persons
8 Men
9 Women
10 Total
11 Per cent
12 Men
13 Women
14 Total
15 1997-12-31
16 Number of persons
17 Men
18 Women
19 Total
20 Per cent
21 Men
22 Women
23 Total

D E F G H I J K L M
al status and 5-årsklasser.
Per cent.
10-14 40-44 45-49 50-54 55-59
252 314295 338709 256066 2088
240 304108 324946 247613 2113
492 618403 663695 503679 4201
51,22 51,23 50,39 51,49 51,34 51,06 50,82 51,04 50,84 49
48,61 48,67 48,78 48,75 49,01 48,51 49,06 49,10 49,96 49,16 50
100 100 100 100 100 100 100 100 100 100
265400 315363 268386 257486 280269 304492 69 332321 2487
253132 298141 254030 245139 269193 293500 08 322190 2446
518532 613504 522416 502625 549462 597992 77 654511 4934
51,18 51,4 51,37 51,23 51,01 50,92 62 50,77 50,
48,82 48,6 48,63 48,77 48,99 49,08 38 49,23 49,
100 100 100 100 100 100 00 100 100

Table, R = 18; C = 20 Footnote
Press F1 for Help

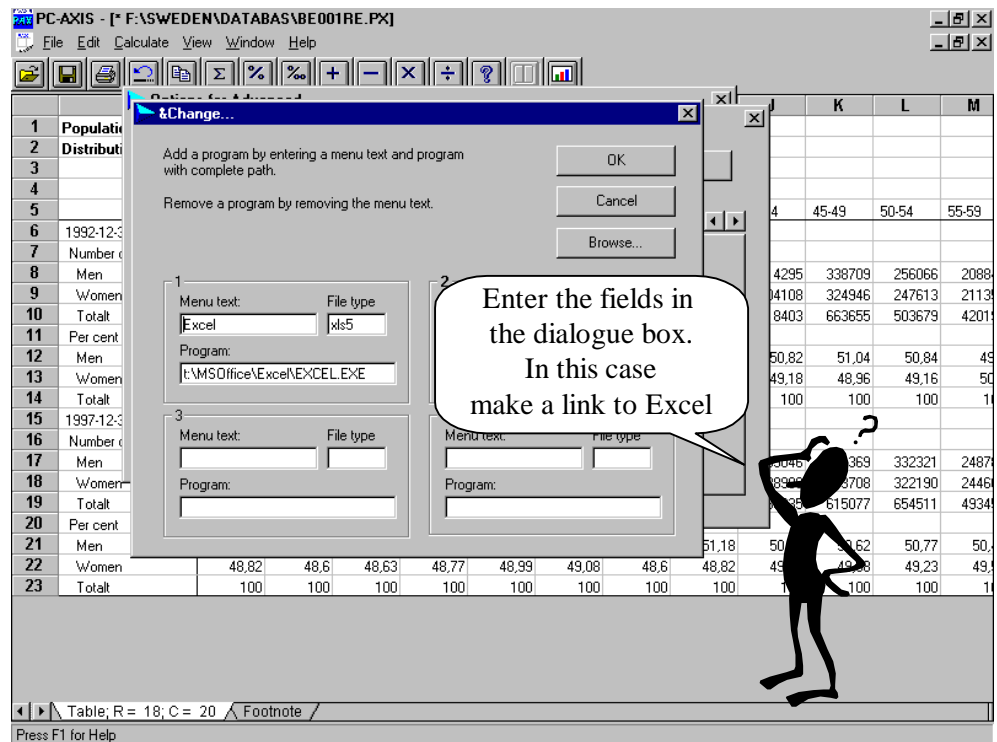
To use the option to link PC-AXIS to another software enter the pull down menu View Advanced.

Select Additions....



As can be seen on the picture it is also possible to change a lot of different parameters. In the window "Options for advanced" you can change directories in which the files shall be stored as default. It is also possible to change the layout of PC-AXIS.

To link another software to PC-AXIS

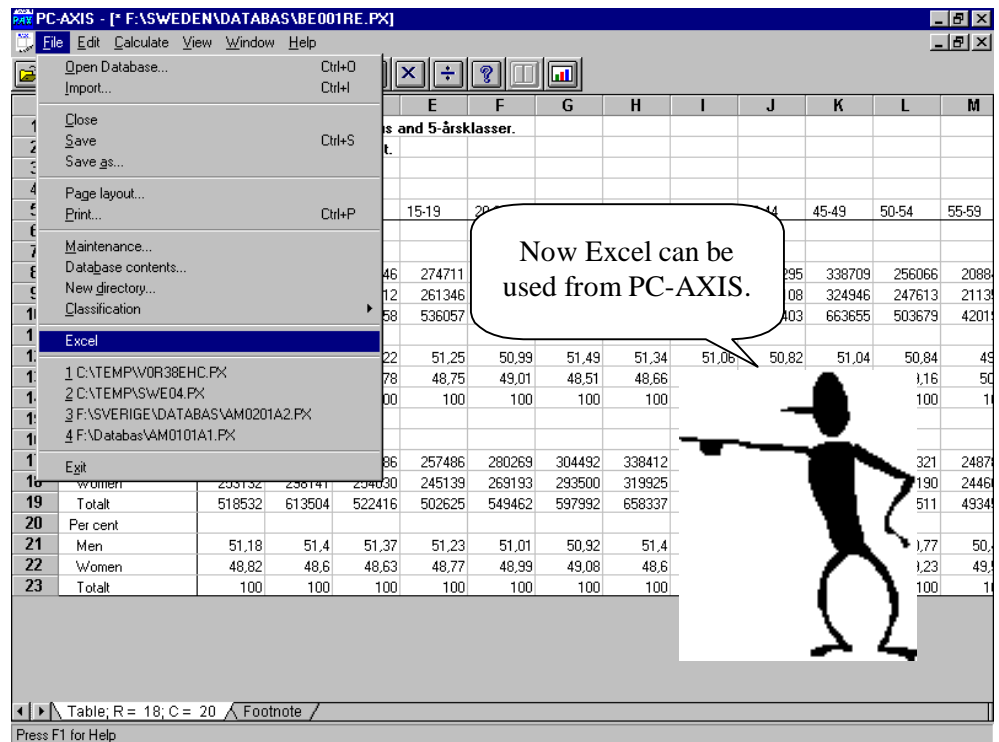


Some explanations

In the dialogue box above optionally four different software can be linked. To establish such a link PC-AXIS needs the following information:

- The name of the program is entered in the field **Menu text**. If the character & is entered in front of one of the letters in the name a shortcut is linked to this very character key on the keyboard. The name of the program will then be found in the Archive menu below the names of the previous used files.
- The used file type shall be entered in the field **File type**. If the extension is not known you can get the information from the Archive, Save as, Convert to find the relevant extension.
- In the field **Program** shall be entered the path to the exe module. In this case it is the Excel.exe which is linked. At this stage you have to know where the desired software is located. If you do not know where to find the software use the Explorer search function to find it.

Excel is now linked to PC-AXIS



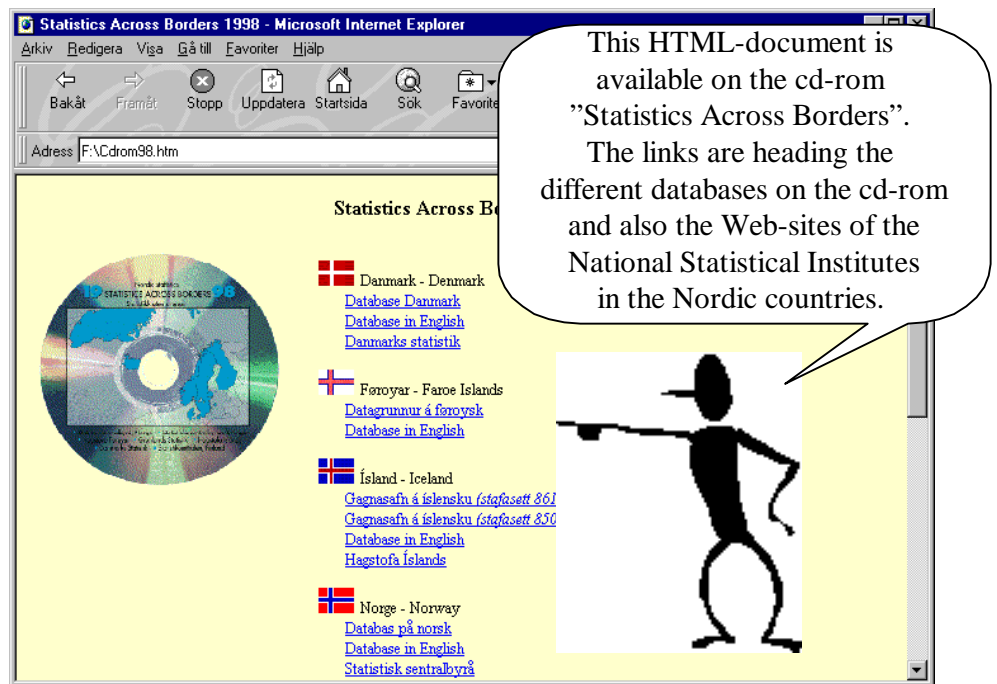
The table in PC-AXIS will automatically be transferred into Excel

When Excel is initialised from PC-AXIS the active table is transferred and opened.

	A	B	C	D	E	F	G	H	I	J	K	L	M
1	Population by period, sex, region, marital status and 5-årsklasser.												
2	Distribution by number of persons and Per cent.												
3	Sweden												
4	Total												
5		0-4	5-9	10-14	15-19	20-24	25-29	30-34	35-39	40-44	45-49	50-54	55-59
6	1992-12-31												
7	Number of persons												
8	Men	310189	261963	252046	274111	261346	256066	208812	211346	211346	211346	211346	211346
9	Women	293395	248369	240012	261346	256066	208812	211346	211346	211346	211346	211346	211346
10	Total	603584	510332	492058	536057	512412	503679	420158	422692	422692	422692	422692	422692
11	Per cent												
12	Men	51,39	51,33	51,22	51,25	50,99	51,49	51,34	51,06	50,82	51,04	50,84	50,84
13	Women	48,61	48,67	48,78	48,75	49,01	48,51	48,66	49,94	49,18	48,96	49,16	49,16
14	Total	100	100	100	100	100	100	100	100	100	100	100	100
15	1997-12-31												
16	Number of persons												
17	Men	265400	315361	257486	280269	304492	338412	299124	299046	311369	332321	248712	248712
18	Women	253132	298141	245139	269193	293500	319925	285361	288989	303708	322190	244612	244612
19	Total	518532	613504	502625	549462	597992	658337	584485	588035	615077	654511	493324	493324
20	Per cent												
21	Men	51,18	51,4	51,37	51,23	51,01	50,92	51,4	51,18	50,86	50,62	50,77	50,77
22	Women	48,82	48,6	48,63	48,77	48,99	49,08	48,6	48,82	49,14	49,38	49,23	49,23
23	Total	100	100	100	100	100	100	100	100	100	100	100	100

Internet user interface to PC-AXIS on CD-roms

Statistics Across Borders - Nordic statistics on CD-ROM



On the 1998 issue of "Statistics Across Borders" a HTML-document named Cdrom98.htm looking as above is available. It works in the same fashion as the service Prepackaged files in the Sweden's Statistical databases but you do not require any Internet communication. You just select database for any of the present countries and then a document showing subject areas will appear. Under selected subject area documents showing the content of the different PC-AXIS files will turn up. When a file name is clicked PC-AXIS automatically starts and gives you options to select variables and values as usual in PC-AXIS.

Internet links to the Nordic NSI:s is also available in the document

Using the links to the NSI:s web-sites gives you the opportunity to access PC-AXIS files from several of the Nordic NSI:s. At present such file services are available at Statistics Denmark, Statistics Greenland and Statistics Finland.

History

PC-AXIS was initially developed for the Swedish Population Census 1990. The main users got at copy of PC-AXIS instead of paper tables. The tables then was down loaded from the databases on the Main-frame into PC-AXIS. Since then PC-AXIS is used for diskettes, CD-ROM and from 1997 Statistics Sweden use it as a help-application to the database system in the Internet.

PC-AXIS international reference group

PC-AXIS is used in several National Statistical Offices, NSIs. At present: Brazil, Bolivia, Denmark, The Philippines, The Faroe Islands, Finland, Greenland, Iceland, Norway, Spain (Basque autonomy) and Sweden. For the NSIs to influence the further development of PC-AXIS an International Reference Group has been established. The PC-AXIS Reference Group meets once a year to exchange experiences, study related software and most of all discuss further steps of the development of the software.

NSIs using PC-AXIS for dissemination of statistics in machine readable form pays an annual fee for system-documentation and further versions of PC-AXIS. The NSI then gets the right for its country to disseminate statistics including PC-AXIS to any of its customers.

Contacts

e-mail: **infoservice@scb.se**
Phone: **+46 8 783 48 01**
Fax: **+46 8 783 48 99**

Infoservice
IP/INFO
Statistics Sweden
Box 24 300
S- 104 51 Stockholm
Sweden

e-mail: **Databanker@dst.dk**
Phone: **+45 39 17 31 50**
Fax: **+45 39 17 39 99**

Statistics Denmark
Databanker
Sejrøgade 11
2100 København Ø
Denmark