



True Bernina quality at prices that'll inspire you.
activa 210, 220, 230 PE and 240

BERNINA⁺



Our anniversary. *Your year.*



Bernina activa 210, 220, 230 PE and 240

These four activa models will not only inspire you with their great prices, they'll also inspire you to create so many beautiful projects. Whether you want to make quilts, garments, crafts, or decorations for your home, activa machines are packed with power, features and fun. And each one offers the Swiss precision and true quality that make Bernina machines legendary.

In fact, everything about these machines says quality...from the precise CB Hook, which ensures perfect stitches on any fabric, to the powerful DC motor, which penetrates layers of fabric at any speed. They also offer a wide variety of stitches—up to 256 on the 240 model—one more lovely than the next.

The activa machines are computerized, too, and offer a variety of features to make your sewing easier and more fun than ever before. You'll appreciate the time-saving Temporary Altered Stitch Memory, which remembers the changes you make to each stitch during your sewing session. Plus, features like an Automatic Needle Threader and Needle Stop Up/Down take the frustration out of sewing, so you can focus on your creativity.

The activa 230 PE and 240 also come with a freestanding accessory case that attaches to your machine for easy storage and traveling. This convenient case is optional on the 210 and 220 models as well. And that's just the beginning of the great features on these inspirational machines.



**Compact Accessory Box**

This fun, freestanding case features specialized compartments and drawers for your accessories. Perfect for easy storage and travel, it conveniently detaches when you want to use it. (Standard on the 230 PE and 240. Available for purchase with the 210 or 220.)

**Cool Fluorescent Light**

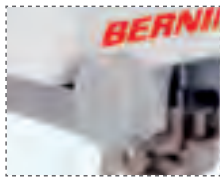
This U-shaped fluorescent light illuminates the entire sewing area. A Bernina exclusive. (Standard on the 240, optional on the 210, 220 and 230 PE.)

**Infinitely Variable Stitch Length/Width**

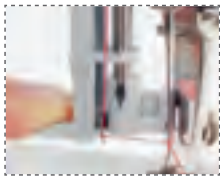
Stitch settings can be infinitely altered and viewed on screen. This feature offers the smooth tapering of stitches, so important for appliqué, cutwork and satin-stitch embroidery. Nine needle positions provide additional flexibility.

**Temporary Altered Stitch Memory**

This great feature stores your altered stitches in temporary memory, so you can access them again during the same sewing session. A Bernina exclusive.

**Magnifying Lens Holder**

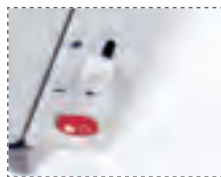
Machine-mounted holder for the optional set of Bernina lenses of varying strengths.

**Auto Needle Threader**

For successful needle threading the first time. Threading is as easy as one, two, three.

**One-piece Presser Feet**

Seven of our most popular, all-metal presser feet come standard on the 230 PE and 240. (Optional on the 210 and 220.)

**Start/Stop Unit**

Use the Start/Stop button and speed regulator as an alternative to the foot control. Saves time and physical effort. Add this great feature onto any activa model.

**Programmable Buttonholes**

Sew the first buttonhole and the handy programmable buttonhole feature will remember your selected size and repeat as many as you need, all as perfect as the first (230 PE and 240 only).

**Free Hand System**

This knee-operated Bernina innovation raises the presser foot and lowers the feed dog, so you can keep your hands on the fabric when guiding and pivoting (standard on the 240, optional on the 220 and 230 PE).

**Direct-selection Functions**

Four functions available at the push of a button: needle stop up/down, half speed, pattern end and right/left mirror image.

**Stitch Selection**

Simply push the buttons and go right to your stitch. Plus, the typical stitch length/width and needle position are automatically set as the stitch is selected.

Note: For a full listing of product features on specific activa models, see the chart on back.



activa 210, 220, 230 PE and 240

	activa 240	activa 230 PE	activa 220	activa 210
Control Type	Dial-a-Stitch	Dial-a-Stitch	Dial-a-Stitch	Dial-a-Stitch
Stitch Mechanism	CB Hook	CB Hook	CB Hook	CB Hook
Cool Fluorescent Light	Standard	Optional	Optional	Optional
Number of Stitches (Quilting Stitches)	256 (including alphabets) (10)	204 (including alphabets) (10)	118 (including alphabets) (5)	12
Alphabet Styles	3	2	1	-
Buttonhole/Eyelet Styles	5/1	3/1	2	1
Buttonhole Memory Type	Long-term	Long-term	-	-
Automatic Buttonhole Function	Yes	Yes	No	No
Variable Stitch Adjustment (Length and Width)	Push Button	Push Button	Push Button	Push Button
Basting Stitch	Yes	Yes	Yes	Yes
Temporary Altered Stitch Memory	Yes	Yes	Yes	Yes
Stitch Memory	30	30	30	-
Thread Tension	Manual	Manual	Manual	Manual
Standard Presser Feet	7	7	5	5
Drop Feed	Yes	Yes	Yes	Yes
Needle Positions	9	9	9	9
Needle Stop Up/Down Function	Yes	Yes	Yes	Yes
Needle Stop Up/Down with Foot Control	Optional	Optional	Optional	Optional
SSU – Start/Stop Power Unit	Optional	Optional	Optional	Optional
Free Hand System (FHS)	Yes	Optional	Optional	-
Motor Type	DC	DC	DC	DC
Motor Speeds*	2	2	2	2
Sewing Table	Yes	Yes	Optional	Optional
Machine Cover	Soft	Soft	Soft	Soft
Magnifying Lenses	Optional	Optional	Optional	Optional

* Addition of SSU provides slide speed control.

Visit www.berninausa.com for complete product information, creative projects and sewing tips.



No one supports the creative sewer like a Bernina Dealer.

