

Vuescape®

Wireless 5 button Optical Mouse

Item Number: 11010887



Installation & User's Guide

All brand names and trademarks are the property of their respective owners.

FCC and CE Radiation Norm

FCC

This equipment has been tested and found to comply with limits for a Class B digital device pursuant to Part 15 of Federal Communication Commission (FCC) rules.

CE

This equipment has been tested and found to comply with the limits of the European Council Directive on the approximation of the law of the member states relating to electromagnetic compatibility (89/336/EEC) according to EN 55022 class B.

FCC and CE Compliance Statement

These limits are designed to provide reasonable protection against frequency interference in residential installation. This equipment generates, uses and can radiate radio frequency energy, and if not installed or used in accordance with the instructions, may cause harmful interference to radio communication. However, there is no guarantee that interference will not occur in a television reception, which can be determined by turning the equipment off and on, the user is encouraged to try and correct the interference by one or more of the following measures:

- Reorient or relocate the receiving antenna
- Increase the separation between the equipment and the receiver
- Connect the equipment into an outlet on a circuit different from that to which the receiver is connect to



CAUTION!

The Federal Communication Commission warns the user that changes or modifications to the unit not expressly approved by the party responsible for compliance could void the user's authority to operate the equipment.

Features:

- **Optical sensor-** provides accurate cursor movement and superior performance.
- **Save space and reduce clutter-** with 360° range of operation and no cables while working in tight spaces. Receiver may attach to the mouse for more storage space
- **Enjoy moving freedom and flexibility-** with a 27MHz radio frequency (RF) range that extends to 1.5M from the receiver
- **5 buttons with scroll wheel-** to allow the end user to define actions
- **Designer shape-** fits left and right hand use
- **“Automatic Power Sleep” and “Smart Power Management” function-** Extends battery life



System Requirements:

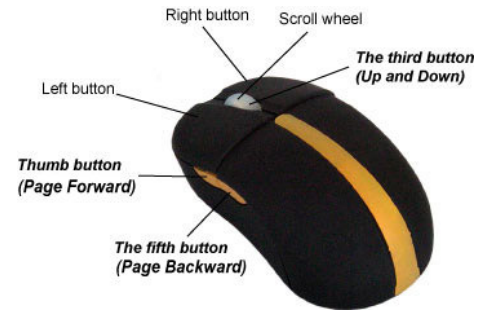
- Windows 2000/XP/Vista
- Available USB port

Package Contents

- Wireless 5 button optical mouse
- USB mini receiver
- 2 AAA batteries
- User Manual

→Buttons:

Mouse	5 buttons with Scrolling Wheel, 1 Connect button
Receiver	1 Connect button



→Battery Consumption:

Operating mode	≤20MA / 3V
Sleep mode 1	≤1MA / 3V
Sleep mode 2	≤700μA / 3V
Low battery indicator	1.8V
Battery type	two AAA batteries
Continuous Working Time	10 Hours

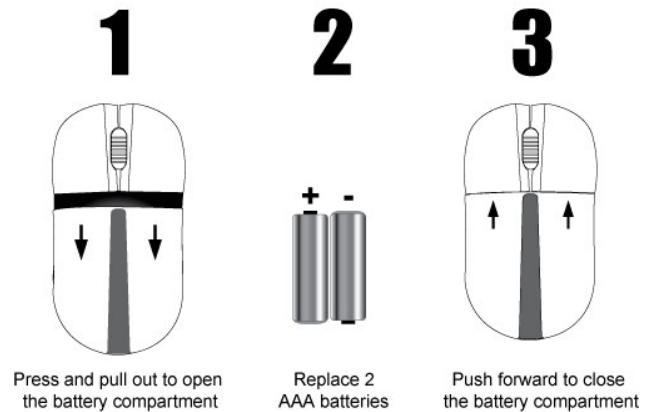
Electrical Specifications:

Interface	USB1.1
Operation angle	360 degrees
Operation distance	1.5 meters
Frequency	27.045MHz
Resolutions	800DPI

To start using Wireless Mouse

1. Battery Installation

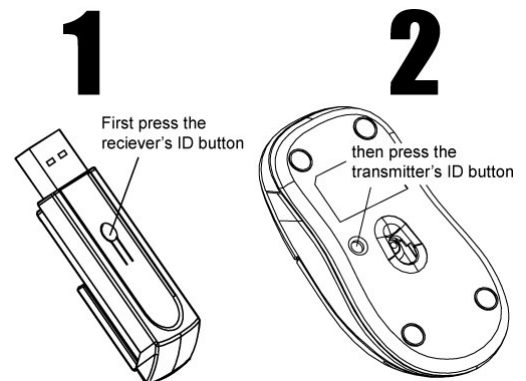
- 1) Use your thumbs to open the battery compartment of the mouse and remove it by pulling back.
- 2) Insert two 1.5V; type LR03 AAA batteries into the compartment. Make sure to comply with the polarity markings.
- 3) Push forward to close the battery compartment back onto the mouse again until you hear it click into place.



2. Establishing a connection between the mouse and the RF receiver

The following steps have to be carried out within 15 seconds if a successful connection is to be established between the mouse and the RF receiver. Ensure that the mouse is no further than 1.5m away from the RF receiver.

- 1) Connect the RF receiver to any free USB port on your computer. The Plug & Play function of your system will automatically detect that a new device has been connected. The mouse will not yet be ready to use at this stage.
- 2) First, press the Connect button on the receiver that shown as **step 1**.
- 3) Then, press the Connect button on the bottom side of the mouse as **step 2**.
- 4) After a few seconds your mouse will be ready for use.



3. Sleep Mode

The mouse will switch to power saving mode after 3 seconds while working; and power off automatically in 8 minutes to extend battery life. The mouse will be activated again with one mouse click.

Operating Hints

For optimal performance and RF reception:

- Turn off your computer's power management feature before charging the mouse so that your computer doesn't enter sleep mode, which temporarily halts the charging process.
- Place the receiver at least 8 inches (20 cm) away from all electrical devices, such as your monitor, speakers or external storage devices.
- Avoid using the mouse on a metal surface. Metals, such as iron, aluminum or copper, shield the radio frequency transmission and may slow down the mouse's response time or cause the mouse to fail temporarily.
- The mouse will enter a suspend mode at the same time your computer does. To activate the mouse, press any button.
- If your computer has a metal case that contains aluminum or magnesium, use the mouse to the side. The display panel may interfere with the radio frequency signal if you use the mouse directly in front of the computer.
- Never use the mouse on a glass or mirrored surface as these surfaces will cause the mouse to fail temporarily.
- To maximize battery life, use the mouse on a white, or light colored surface. Dark surfaces cause the mouse's light emitter diode (LED) light to glow brighter, which causes the battery to discharge more rapidly.

Troubleshooting

What do I do if the mouse does not work?

1. Make sure that the mouse is fully charged.
2. Verify that your computer's power management feature is turned off.
3. Check that the receiver's USB connector is firmly attached to the USB port on your computer.
4. Make sure you have established a radio link between the mouse and its receiver. See "Establishing a connection between the mouse and the RF receiver".

The RF receiver is recognized by Windows but the mouse pointer does not move.

1. Repeat the section "Establishing a connection between the mouse and the RF receiver" and ensure that the mouse is within range (1.5m) of the RF receiver.
2. If this does not solve the problem, check that the optical sensor on the underside of the mouse lights up. If the sensor does not light up, it is likely that the batteries need replacing. Replace the batteries and repeat the above steps again.

When I use the mouse, other wireless devices work more slowly or fail temporarily – what should I do?

The mouse has 256 (ID) identity codes per channel to prevent interference. However, some interference may still occur if there are multiple radio-based devices that operate at 27 MHz, such as a telephone, baby monitor, or a toy. To reduce interference, move the mouse's receiver and the base unit of the affected device as far away from each other as possible.

What do I do if the response time of the mouse is slow or the mouse intermittently stops working?

1. Increase the distance between the mouse's receiver and the rest of your computer equipment.
2. Increase the distance between the mouse's receiver and the base units of other wireless devices.
3. Turn off any wireless devices and their base units that are near the mouse's receiver.
4. If you are using the mouse on a metal surface, move it and the receiver to a non-metal surface. Metals, such as iron, aluminum or copper, shield the radio frequency transmission and may slow down the mouse's response time or cause the mouse to fail temporarily.

I can't use the mouse while another RF mouse is in use – what should I do?

Reset the identification code. See "Establishing a connection between the mouse and the RF receiver".

TV & Radio Interference Statement

WARNING!!! This equipment generates, uses, and can radiate radio frequency energy and, if not installed and used in accordance with the instruction manual, may cause interference to radio communications. This equipment has been tested and found to comply with the limits for a Class B computing device pursuant to Subpart J of Part 15 of FCC Rules, which are designed to provide reasonable protection against such interference when operated in a commercial environment. Operation of this equipment in a residential area is likely to cause interference, in which case the user at his own expense will be required to take whatever measures may be required to correct the interference.

Customer Service

For information regarding the return or exchange of this item within 14 days of purchase , please visit your Inkstop store location or go to www.inkstop.net to read the instructions regarding customer service returns procedures. Click on the Satisfaction Guaranteed icon on the website.

For technical support in regards to operation and installation of this item please call the toll free number below to obtain assistance. A customer service representative will assist you and provide operating information on the product.

Please have the following information available when you contact technical support:

- Your Name and Address
- Date of Purchase
- Model Number
- Serial Number
- Store Name and Address
- Type of problem with the unit

To contact the technical support facility, please call **508-435-4830** or 800-639-3803.

Email Support: techsupport@fourstari.com

Warranty

90 Days Limited Warranty

This product is warranted to be free from defects in material and workmanship for a period of 90 days. Warranty obligations are limited to replacement or repair of defective parts and components, at the option of the manufacturer. If the original model is no longer available, we will substitute with a model of equal or better value than the original item. The warranty of this product is null and void if the product is subjected to negligence, abuse, modification, misuse, accident or if the customer uses the product for a function it was not intended for. This warranty is only valid for the original purchaser of this product and will not be honored if the product is resold. This warranty gives you specific legal rights, and you may also have other rights which vary from state to state.

The manufacturer will not be liable for incidental or consequential damages caused by the use of this product. The manufacturer will not be liable for any costs such as lost profits or revenues, cost of temporary replacements, loss of data, loss of equipment or use of equipment or any claims by third parties.

After 14 days from the purchase date of this product, please call the phone number listed below to obtain service. A customer service representative will give you a return authorization (RA number) allowing you to ship the product to the service center. The purchaser must have a copy of the original receipt for proof of purchase within 90 days. The purchaser of this product is responsible for any shipping charges to the repair facility. The manufacturer service center will repair or replace the unit in question and send it back to the purchaser.

In order to contact the service facility, please call **508-435-4830** or 800-639-3803.

The address for this facility is:

Fourstar Group
26840 Fargo Ave.
Suite C
Bedford Heights, OH 44146

E-mail Support: techsupport@fourstari.com

