



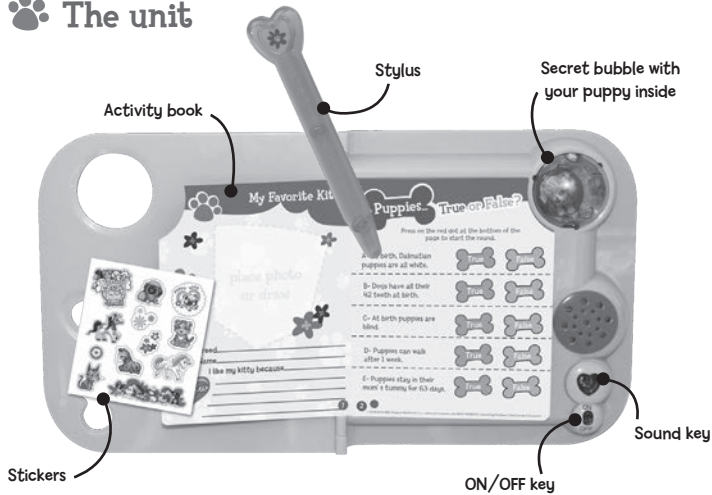
Age  
6+

Interactive  
Magic Book

Instruction Manual



## The unit



### Important information

- This toy is suitable for children aged 6 years & over.
- Please retain this manual for further reference.
- **WARNING:** All packing materials such as internal bags, plastic collars, plastic films, carton inserts are not part of this product and should be discarded for your child's safety.
- **IMPORTANT:** for additional safety, check toys regularly for signs of damage during use.
- Not suitable for children under 36 months. Presence of small parts which can be swallowed.

## Contents

- Unit
- Activity book
- Stylus
- Sticker sheet
- One small Puppy In My Pocket

## How to Play

Move the ON/OFF key switch to the ON position.

Press the sound key to hear fun sounds.

Open your Magic Book and choose a page you want to play with.

All left hand pages are for you to colour/write as you wish - there is no electronic function associated with these pages.

All right hand pages have an electronic quiz.

To start playing the games, first press on the red dot on the bottom of the page to start the round... you will then hear a cute sound effect.

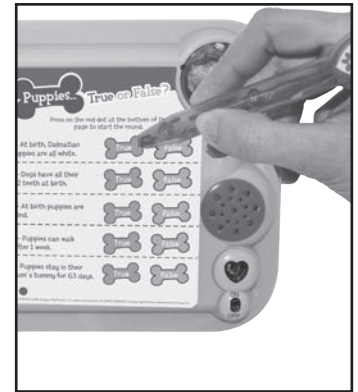
You can then answer the questions by touching the correct response with your stylus. Be careful - only one answer per question is allowed.

The sound effect will confirm whether you have answered correctly, or not.

When you have completed all 5 of your answers you will hear a tune.

The tune is different depending on if you have answered the questions all correctly or not.

Should you wish to play the same game again then don't forget to press on the red dot once more to start a new round.



After a minute or so without touching any key/contact, the unit will automatically switch OFF.

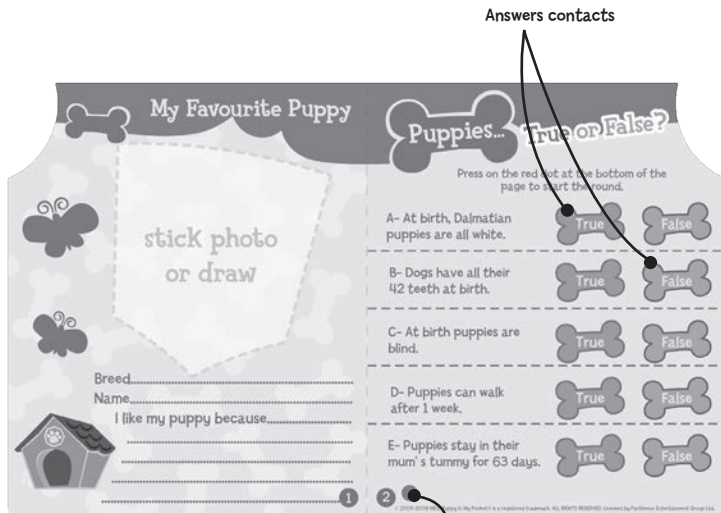
You can reactivate it simply by touching a page contact (red dot) or the sound key.

In order to save battery life, don't forget to switch the unit OFF (OFF position) when you stop playing.

**CAUTION :** Only use the supplied stylus to play with the quiz pages. Never use any sharp object nor tip of pen/pencil as this could damage the product. If stylus is lost, use tip of your finger.

**NOTE :** To ensure that the book is always correctly placed on the electronic element, the back cover of the booklet has been glued to the plastic.

Please do not remove it as this could affect the functioning of the product.



LEFT PAGES

RIGHT PAGES, 1st press on the red dot to identify the page.

## Answers to the Questions

Page 2: A - True/B - False/C - True/D - False/E - True

Page 4: A - Poodle/B - Bulldog/C - Pomeranian/D - Labrador/E - Pekinese

Page 6: A - Kennel/B - Carnivorous/C - Sheds/D - A coat/E - Barks

Page 8: A - Yes/B - No/C - No/D - Yes/E - No

Page 10: A - True/B - False/C - True/D - True/E - True

Page 12: A - Bengal/B - Burmese/C - Himalayan/D - Scottish Fold/E - Japanese Bobtail

Page 14: A - Arabian/B - Appaloosa/C - Clydesdale D - Quarter Horse/E - Shetland

Page 16: A - Mare/B - Herbivorous/C - Colt/D - Gallops/E - Horseshoes

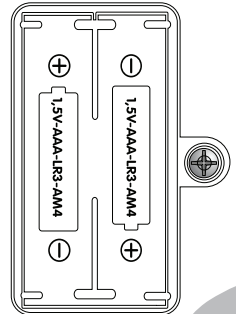
Page 18: A -  /B -  /C -  /D -  /E - 

Page 20: A - Snarls/B - None/C - Trumpets/D - Growls/E - Barks

## How to Change Batteries

**BATTERY CHANGING MUST BE BY AN ADULT OR UNDER ADULT SUPERVISION**

1. This product requires 2 x AAA batteries.
2. When required, using a suitable screwdriver, undo and remove the battery cover located under the unit.
3. Insert 2 x AAA batteries into the compartment, ensuring they are installed the correct way around.
4. The polarities are marked inside the battery compartment.
5. Should the batteries have no polarity markings, the flat end of the battery should always be inserted against the spring.
6. Reassemble the battery cover and tighten the screw to secure.
7. Do not over tighten.



## Please note the important points below when using batteries to power this product:

- Batteries should be inserted and removed by an adult.
- Only use the type of batteries specified in this user manual, or equivalent type.
- We recommend the use of alkaline batteries.
- Follow the polarity diagram inside the battery compartment and the polarity markings on the batteries.
- An incorrect location may either damage the toy, or cause battery leakage, or, to an extreme degree, lead to battery explosion.
- Do not try to charge non-rechargeable batteries, as they may leak or explode. Replace all batteries at the same time.
- Do not mix new with old batteries
- Do not mix different types of batteries (i. e. alkaline and zinc carbon).
- Remove the batteries during long periods of non-use. Always remove exhausted batteries from the product. Battery leakage and corrosion can damage the product.
- Do not short-circuit the supply terminals. Store batteries away from metal objects.
- Do not dispose of batteries in fire, as they may leak or explode. Never disassemble batteries.
- Rechargeable batteries should not be used.
- When rechargeable batteries are used anyway :
  - Rechargeable batteries shall be charged only under the supervision of an adult.
  - Rechargeable batteries shall be removed from the toy before being charged (if they can be removed).
- If a battery is swallowed, consult a doctor or medical facility, don't forget to take the product with you.  
If battery leakage occurs and come in contact with the skin or eyes, wash immediately with lots of water.
- Batteries are included for demonstration purposes only and may need replacing after purchase.
- Strong Electro Magnetic Interference may disturb the normal function of the product. If so, simply reset the product to resume normal operation by following the instruction manual. In case the function does not resume, please use the product in another location.

- Do not cut, tear, or damage the electronic part underneath the book (right side). It may cause serious malfunction.
- To make sure book is always correctly placed on the electronic part, back cover of the book is glued to the plastic. Please do not remove it; it could affect the functioning of the product.
- Only uses the supplied stylus to play with the right pages. Never use any sharp object or tip of pen, it could damage the product. If stylus is lost, use tip of your finger.

This product complies with the essential requirements of European directives 88/378/EEC, directives 89/336/EEC, 92/31/EC, 93/68/EEC, 2004/108/EC , 2002/96/EC and 2003/108/EC, 2002/95/EC

## Trouble Shooting

If the unit doesn't operate...	Check that the batteries are installed correctly. Or Install new batteries.
If the volume is too low...	Install new batteries.
If the voice/music begins playing at a very high or low rate of speed...	Install new batteries.
If there is a continuous buzzing sound and the unit doesn't operate...	Install new batteries.
When I touch the answers to answer the question on the right pages, I only hear the same buzzing sound.	Don't forget to press the red dot on the bottom of your page to start the round. When pressing the red dot, you should here a cute melody.
Right page contacts do not function.	Make sure unit is in ON position. Or Install new batteries.
When writing or touching the left pages, I don't hear any sounds.	Left pages are not active, not linked to the electronic. Only right pages are linked to the electronic.
If the unit malfunctions...	Install new batteries.

## Important Information

### Care instructions :

- Keep the unit clean by wiping it with a slightly damp cloth.
- Keep the unit out of direct sunlight and away from any direct heat source.
- Do not expose the unit to moisture or water.

InspirationWorks UK Ltd  
4 Beaumont House  
Sutton Road  
St Albans  
Herts  
AL1 5HH  
UK

Hotline: 0870 898 8923

[www.inspirationworks.co.uk](http://www.inspirationworks.co.uk)

© 2009 - CIDE toys

©2005-2009 MEG; Puppy In My Pocket®, Kitty In My Pocket®, Jungle In My Pocket®, Pony In My Pocket® and Puppy In My Pocket & Friends®; ALL RIGHTS RESERVED. Licensed by Parthenon Entertainment Group Ltd.



Rev.00  
March 2009  
Made in China  
Printed in China



WASTE ELECTRICAL PRODUCTS AND BATTERIES SHOULD NOT BE DISPOSED OF WITH HOUSEHOLD WASTE. PLEASE RECYCLE WHERE FACILITIES EXIST. CHECK WITH YOUR LOCAL AUTHORITY FOR RECYCLING ADVICE