



Operating Instructions

HD Visual Communication-MPCS

Thank you for purchasing this Panasonic product.
Please read this manual carefully before using this product and save this manual for future use.

HD Visual Communication-MPCS (hereafter abbreviated as "HDVC-MPCS"): Software Version 2.00 or later

Introduction

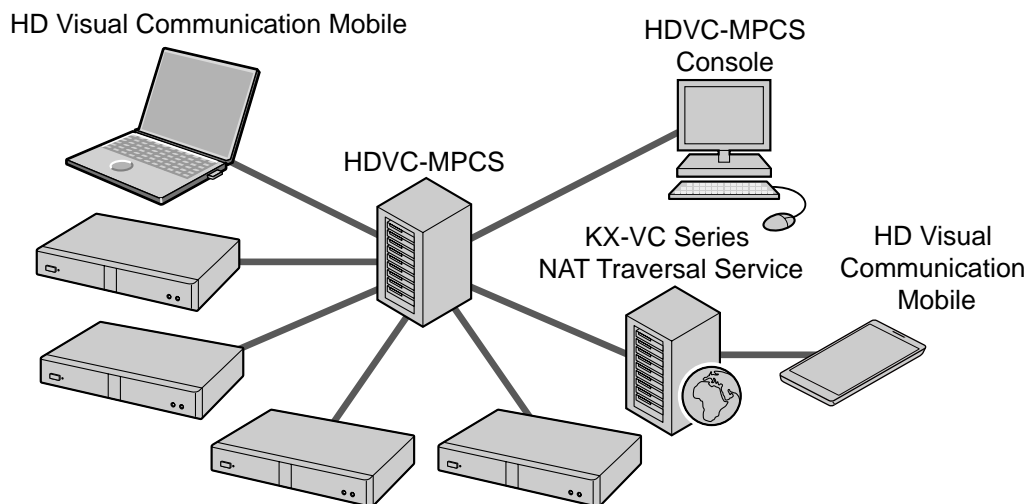
About this Manual

This manual describes how to operate the HDVC-MPCS from the HDVC-MPCS Console. By using the HDVC-MPCS Console, you can perform operations such as starting a conference, changing the screen layout, changing address book settings etc.

The HDVC-MPCS Console can be used by simply accessing a server that has the HDVC-MPCS software installed from your computer's browser. Special software is not required.

Feature Highlights

Image



HDVC-MPCS is multi-point conference software that enables setting up a flexible SIP communication system with 6 to 16 participants for the HD Visual Communication Unit or the HD Visual Communication Mobile. It is possible to separate the conference screen into a maximum of 16 parts, and customise the screen layout or display position of the participants.

Sites that can be Connected

- To connect to the HDVC-MPCS, the software version of the HD Visual Communication Unit must be 2.20 or later.
- To connect to the HDVC-MPCS, the software version of the HD Visual Communication Mobile for Android™ must be 2.0 or later.
- To connect to the HDVC-MPCS, the software version of the HD Visual Communication Mobile for Windows® must be 2.0 or later.
- When using encryption and KX-VC series NAT Traversal Service with the HD Visual Communication Unit, it is necessary to update the software to version 3.00 or later.
- When using the KX-VC500 to connect to the HDVC-MPCS, it is necessary to activate the Connection Enhancement feature with an activation key card (sold separately). For details about this feature, refer to the Operating Manual or User Manual of the HD Visual Communication Unit.

Notations

Windows® refers to the Microsoft® Windows operating system.

Trademarks

- Microsoft, Windows and Internet Explorer are either registered trademarks or trademarks of Microsoft Corporation in the United States and/or other countries.
- Mozilla and Firefox are registered trademarks of the Mozilla Foundation.
- Android is a trademark of Google Inc.
- Linux is a registered trademark of Linus Torvalds in the United States, other countries, or both.
- Polycom® is a trademark owned by Polycom, Inc. in the US and other countries.
- All other trademarks identified herein are the property of their respective owners.

Open Source Software

Parts of this product use Open Source Software supplied based on the conditions of the ITU-T and other conditions. Therefore, please refer to the information display screen for HDVC-MPCS using the HDVC-MPCS Console.

For Open Source Software released by ITU-T, within a period of at least three (3) years from delivery of the product, Panasonic will give to any third party who contacts us at the contact information provided below, for a charge of no more than the cost of physically distributing source code, a complete machine-readable copy of the corresponding source code and the copyright notices covered under ITU-T. Please note that software licensed under ITU-T is not under warranty.

Contact Information

http://www.panasonic.net/corporate/global_network/

Licenses

- THIS PRODUCT IS LICENSED UNDER THE AVC PATENT PORTFOLIO LICENSE FOR PERSONAL AND NON-COMMERCIAL USE TO (i) ENCODE VIDEO IN COMPLIANCE WITH THE AVC STANDARD ("AVC VIDEO") AND/OR (ii) DECODE AVC VIDEO THAT WAS ENCODED BY A CONSUMER ENGAGED IN A PERSONAL ACTIVITY AND/OR WAS OBTAINED FROM A VIDEO PROVIDER LICENSED TO PROVIDE AVC VIDEO. NO LICENSE IS GRANTED OR SHALL BE IMPLIED FOR ANY OTHER USE. ADDITIONAL INFORMATION MAY BE OBTAINED FROM MPEG LA, L.L.C. SEE [HTTP://WWW.MPEGLA.COM](http://WWW.MPEGLA.COM)
- THIS PRODUCT INCORPORATES G.722.1 ANNEX C LICENSED BY POLYCOM®.

Table of Contents

Before Operation	6
Data Security	6
Privacy and Right of Publicity	6
Preparation	7
System Requirements	7
Authorised Users	7
Screen Display	8
Login Screen	8
Home Screen	9
Setting Screen	10
Maintenance Screen	11
Profiles	11
Conference Mode	11
Dial in/Dial out	12
Switching the Display	12
Screen Layout Pattern	12
Changing Screen Layout	13
Changing the Display Position of the Site Image	13
Presentation Mode	14
Settings for HD/SD Video	14
KX-VC Series NAT Traversal Service	14
Message from KX-VC Series NAT Traversal Service	14
Basic Operation	15
Log in/Log out	15
Log in	15
Log out	15
Starting a Conference	16
Making a Conference In Normal Mode	16
Making a Conference In Ad-Hoc Mode	18
Operation During a Conference	19
Changing Display Position of Site Images (Normal Mode Only)	19
Muting/Unmuting the Audio (Normal Mode only)	20
Changing Screen Layout (Normal Mode Only)	21
Displaying/Hiding the Site's Name	21
Adding Sites during a Conference	22
Disconnecting a Site from the Conference	24
Checking the Status of the Conference	25
Checking the Traffic	25
Ending a Conference	26
Joining a Conference (Dial In) (On-Site Operation)	27
Disconnecting from a Conference (On-Site Operation)	27
Selectable Video Source (Presentation Mode) (On-Site Operation)	27
Dialling out to Sites (Ad-Hoc Mode) (On-Site Operation)	28
Settings and Registration	29
Basic Settings	29
Profile Settings	31
Registering/Editing Profiles	31
Deleting Profile	35
Address Book Settings	36

Registering/Editing the Address Book	36
Deleting a Site	38
Maintenance	39
Activation	39
Network Status	39
Port Setting	41
Language Setting	43
Account Setting	43
Adding Accounts	43
Deleting Accounts	44
Changing the Account Password	45
Log	46
Configuration Data	46
Making a Backup of the Configuration Data	47
Restoring the Configuration Data	47
Shutdown	48
About HDVC-MPCS	48
Additional Information	50
Troubleshooting	50
Basic Operation	50
If These Messages Appear	51
Specifications	52
System Specifications	52
Index.....	53

Data Security

We recommend observing the security precautions described in this section, in order to prevent the disclosure of sensitive information.

Panasonic is not responsible for any damages caused by improper use of this device.

Preventing Data Loss

Keep a separate record of all information stored in the address book, or make a backup using the HDVC-MPCS Console.

Preventing Data Disclosure

- Do not place the computer in a location that can be accessed or removed without authorisation.
- If important information is saved on the computer, store it in an appropriate location.
- Do not store sensitive personal information in the product.
- In the following situations, make a record of the information stored in the address book and uninstall the HDVC-MPCS.
 - Before lending or disposing of the computer
 - Before handing the computer over to a third party
 - Before having the computer serviced
- Make sure the product is serviced by only a certified technician.

This product can register and store personal data (the address book, history log, etc.). In order to prevent the disclosure of data stored on this product, make sure to delete all data that is registered and stored on this product prior to disposing of, lending, or returning the computer.

Preventing Data Disclosure over the Network

- To ensure the security of private conversations, only connect the product to a secure network.
- To prevent unauthorised access, only connect the product to a network that is properly managed.
- Make sure all computers connected to the product employ up-to-date security measures.
- Keep a separate record of the log-in user name and password and store it in a safe place.
- Use a password that cannot be easily guessed by a third party.
- Change the password periodically.

Privacy and Right of Publicity

By installing and using this product, you are responsible for maintaining the privacy and usage rights of images and other data (including sound picked up by the microphone). Use this product accordingly.

- Privacy is generally said to be, "A legal guarantee and right not to have the details of one's personal life unreasonably publicised, and the right to be able to control information about oneself. In addition, right of publicity is a right not to have a likeness of one's face or figure photographed and publicised without consent".

System Requirements

Supported Operating System and Browsers

Microsoft Windows 7

- Microsoft Windows Internet Explorer® 8
- Windows Internet Explorer 10

Microsoft Windows 8

- Windows Internet Explorer 10
- Mozilla® Firefox®

Linux®

- Mozilla Firefox

Authorised Users

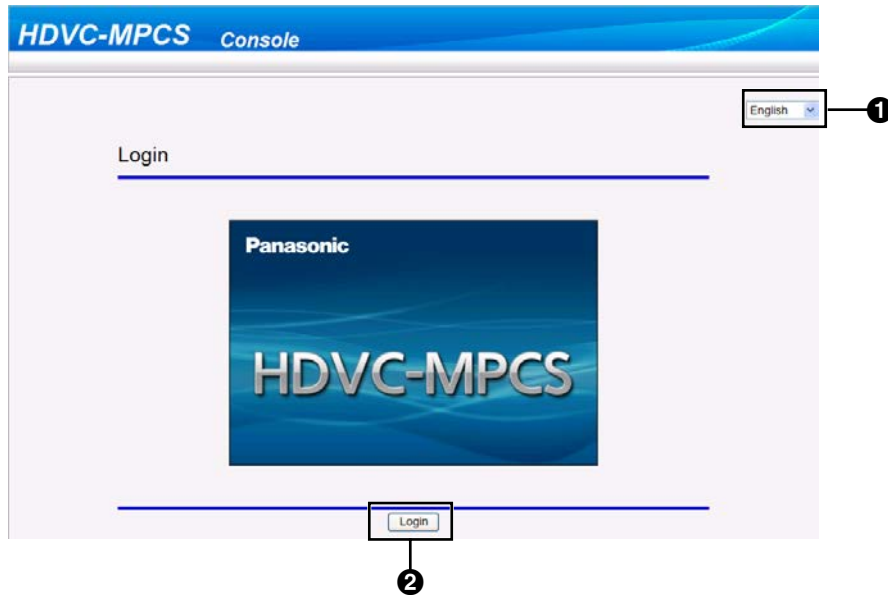
Two types of users with different user authorities can log in to the HDVC-MPCS Console.

Type of User	User Authority	Maximum Number of Registrations
User	Can make a conference using the HDVC-MPCS	16
Administrator	Can configure and maintain the HDVC-MPCS, in addition to making a conference.	3

Screen Display

Login Screen

When starting up the HDVC-MPCS Console, the following screen is displayed.



- ❶ Language Setting Menu
Select "**English**" from the pull-down menu.
- ❷ Login Button
Clicking the button displays a dialogue box to enter the user name and password.

Home Screen

HDVC-MPCS Console

Conference Room

Conference Status | Conference Start/End | Conference Operation | Traffic

Display conference status.
Click [Refresh] button to display the latest information.
Click [Conference Start/End] tab to start or end conference.
Click [Conference Operation] tab to control active conference.
Note: When the conference has started, please click [Refresh] button to display the latest status.

Conference(IP mode)	Active Conference
Conference(NAT Traversal mode)	Active Conference
Conference Elapsed Time	00:00:30
Terminal ID	123-4567
Conference Mode	Normal Mode
Presentation Mode	ON
Profile ID	1
Profile Name	Daily Meeting
Screen Layout(HD Video)	CP16
Screen Layout(SD Video)	CP16
Video Switching Mode	Manual

Active Participant List

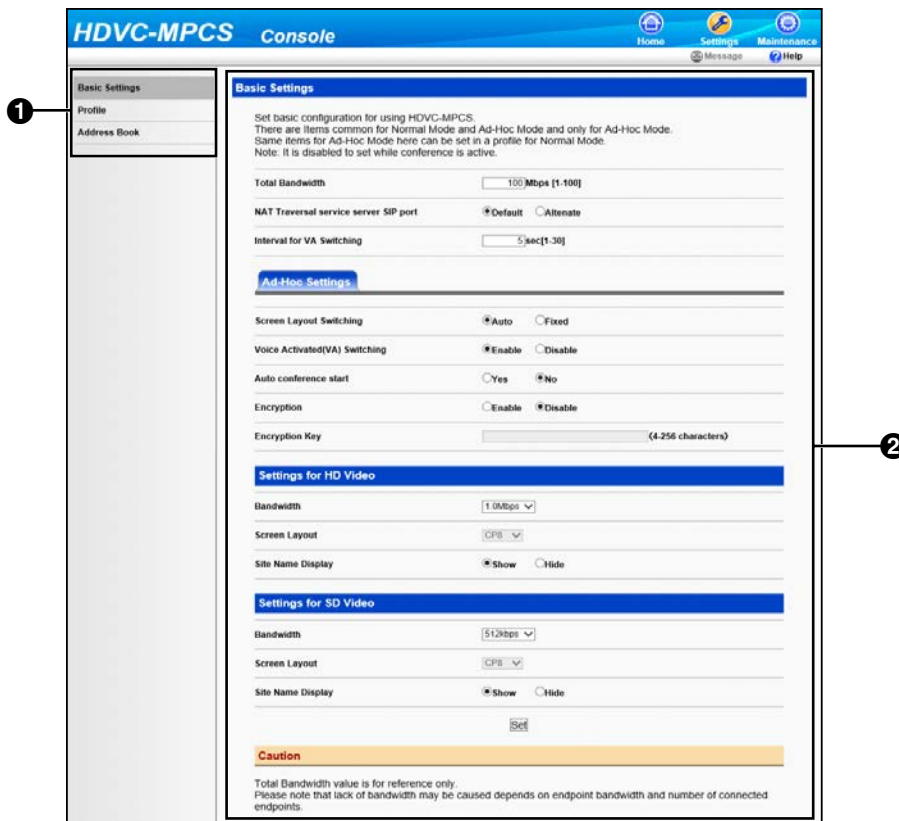
Site	Position	Mute
123-4567	NAT Traversal	4 OFF
987-6543	NAT Traversal	1 OFF
192.168.0.72		2 OFF

In case of Presentation Mode ON, [Site Icon] will be displayed.

Refresh

- 1** Screen Selecting Tab
Click a tab to jump to the designated screen.
- 2** Help Button
Click the button to display Help.
- 3** Message Button
Click this button to display messages from the KX-VC Series NAT Traversal Service. The button will become active (its colour turns from grey to blue) when a message from the KX-VC Series NAT Traversal Service is received.
- 4** Operation Area
Perform operations such as displaying the status of a conference, starting/ending a conference, or performing operations during a conference.

Setting Screen



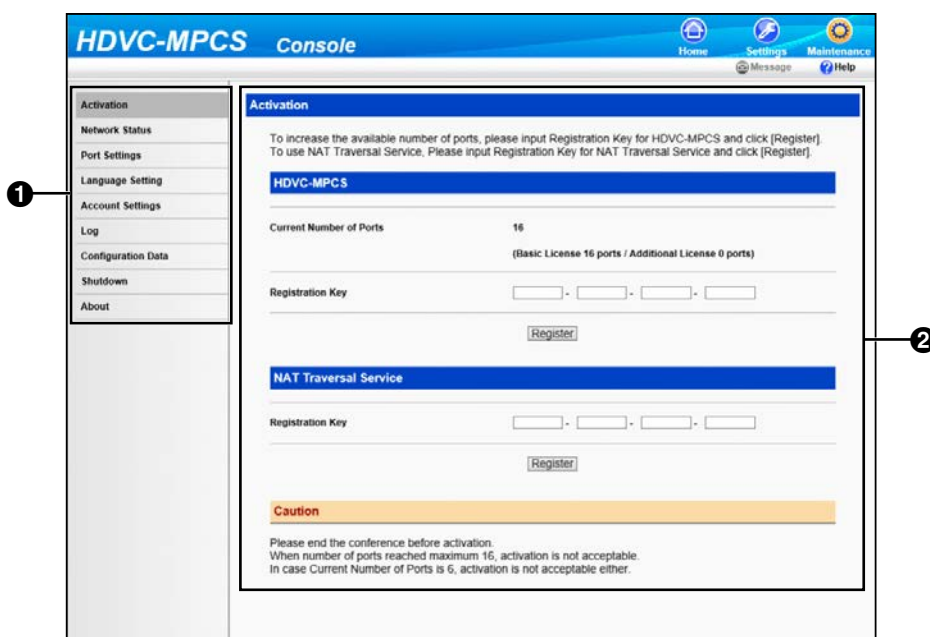
1 Setting Menu List

Setting menus are displayed.

2 Setting Area

Used for making settings such as the bandwidth setting, profile settings for conferences, or registering/editing the address book.

Maintenance Screen



- ❶ Maintenance Menu List
Maintenance menus are displayed.
- ❷ Maintenance Area
Used to set up enhanced features or user accounts.

Profiles

You can register settings such as the sites that can participate in a conference, bandwidth, and screen layout, to a profile before starting a conference. In Normal Mode, it is necessary to specify a profile to start a conference. Once a profile is registered, you can start a conference with the same settings by simply specifying the profile. For details about how to make profile settings, refer to "Profile Settings".

Conference Mode

When making a conference, there are 2 conference modes, as follows. For details, refer to "Making a Conference In Normal Mode " or "Making a Conference In Ad-Hoc Mode".

Conference Mode	Description
Normal Mode	A conference is performed by specifying a profile that has settings such as the sites and bandwidth registered. In Normal Mode, you cannot be connected to sites that are not registered in the profile. Therefore, this mode is recommended for highly-confidential conferences.
Ad-Hoc Mode	A conference is performed without specifying a profile. It is necessary to set the sites to participate in a conference when starting the conference. In Ad-Hoc Mode, any sites can participate in a conference because a profile is not specified.

Dial in/Dial out

There are 2 types of connection methods to make a conference using HDVC-MPCS, as follows:

Connection Methods	Description
Dial out	Call sites to participate in the conference from the HDVC-MPCS.
Dial in	Have participants in the conference call the HDVC-MPCS.

Switching the Display

Screen Layout Pattern

You can select the screen layout during a conference from the following 7 patterns. The number in the layout configuration shows the display priority of the sites' images.

Layout number	Layout configuration																
CP1	<table border="1" style="margin-left: auto; margin-right: auto;"> <tr> <td style="text-align: center;">1</td> </tr> </table>	1															
1																	
CP4	<table border="1" style="margin-left: auto; margin-right: auto;"> <tr> <td style="text-align: center;">1</td> <td style="text-align: center;">2</td> </tr> <tr> <td style="text-align: center;">3</td> <td style="text-align: center;">4</td> </tr> </table>	1	2	3	4												
1	2																
3	4																
CP6	<table border="1" style="margin-left: auto; margin-right: auto;"> <tr> <td style="text-align: center;">1</td> <td style="text-align: center;">2</td> </tr> <tr> <td></td> <td style="text-align: center;">3</td> </tr> <tr> <td style="text-align: center;">4</td> <td style="text-align: center;">5</td> </tr> <tr> <td></td> <td style="text-align: center;">6</td> </tr> </table>	1	2		3	4	5		6								
1	2																
	3																
4	5																
	6																
CP8	<table border="1" style="margin-left: auto; margin-right: auto;"> <tr> <td style="text-align: center;">1</td> <td style="text-align: center;">2</td> </tr> <tr> <td></td> <td style="text-align: center;">3</td> </tr> <tr> <td></td> <td style="text-align: center;">4</td> </tr> <tr> <td style="text-align: center;">5</td> <td style="text-align: center;">6</td> </tr> <tr> <td style="text-align: center;">7</td> <td style="text-align: center;">8</td> </tr> </table>	1	2		3		4	5	6	7	8						
1	2																
	3																
	4																
5	6																
7	8																
CP10	<table border="1" style="margin-left: auto; margin-right: auto;"> <tr> <td style="text-align: center;">1</td> <td style="text-align: center;">2</td> </tr> <tr> <td style="text-align: center;">3</td> <td style="text-align: center;">4</td> </tr> <tr> <td style="text-align: center;">5</td> <td style="text-align: center;">6</td> </tr> <tr> <td style="text-align: center;">7</td> <td style="text-align: center;">8</td> </tr> <tr> <td style="text-align: center;">9</td> <td style="text-align: center;">10</td> </tr> </table>	1	2	3	4	5	6	7	8	9	10						
1	2																
3	4																
5	6																
7	8																
9	10																
CP13	<table border="1" style="margin-left: auto; margin-right: auto;"> <tr> <td style="text-align: center;">1</td> <td style="text-align: center;">2</td> <td style="text-align: center;">3</td> </tr> <tr> <td></td> <td style="text-align: center;">4</td> <td style="text-align: center;">5</td> </tr> <tr> <td style="text-align: center;">6</td> <td style="text-align: center;">7</td> <td style="text-align: center;">8</td> </tr> <tr> <td style="text-align: center;">9</td> <td style="text-align: center;">10</td> <td style="text-align: center;">11</td> </tr> <tr> <td style="text-align: center;">12</td> <td style="text-align: center;">13</td> <td></td> </tr> </table>	1	2	3		4	5	6	7	8	9	10	11	12	13		
1	2	3															
	4	5															
6	7	8															
9	10	11															
12	13																
CP16	<table border="1" style="margin-left: auto; margin-right: auto;"> <tr> <td style="text-align: center;">1</td> <td style="text-align: center;">2</td> <td style="text-align: center;">3</td> <td style="text-align: center;">4</td> </tr> <tr> <td style="text-align: center;">5</td> <td style="text-align: center;">6</td> <td style="text-align: center;">7</td> <td style="text-align: center;">8</td> </tr> <tr> <td style="text-align: center;">9</td> <td style="text-align: center;">10</td> <td style="text-align: center;">11</td> <td style="text-align: center;">12</td> </tr> <tr> <td style="text-align: center;">13</td> <td style="text-align: center;">14</td> <td style="text-align: center;">15</td> <td style="text-align: center;">16</td> </tr> </table>	1	2	3	4	5	6	7	8	9	10	11	12	13	14	15	16
1	2	3	4														
5	6	7	8														
9	10	11	12														
13	14	15	16														

Changing Screen Layout

There are 3 methods to change screen layout, as follows:

Automated Layout

The screen layout changes automatically depending on the number of sites in the conference.

Number of sites	Layout number
1	CP1
2-4	CP4
5-6	CP6
7-8	CP8
9-10	CP10
11-13	CP13
14-16	CP16

Note

- To have the screen layout change automatically, the setting must be configured in Basic Settings (in Ad-Hoc Mode) or in a profile (in Normal Mode). For details, refer to "Basic Settings" (in Ad-Hoc Mode) or "Profile Settings" (in Normal Mode).

Manual Layout (Normal Mode Only)

The screen layout can be changed manually during the conference. For details, refer to "Changing Screen Layout (Normal Mode Only)".

Fixed Layout

The sites' images are displayed according to the screen layout configured before the conference. Screen layout cannot be changed during the conference. For details, refer to "Basic Settings" (in Ad-Hoc Mode) or "Profile Settings" (in Normal Mode).

Changing the Display Position of the Site Image

You can change the display position of site images within the screen layout using one of the following 3 methods.

Voice Activated Switching

The site with the highest volume (speaker) is displayed in the first priority position automatically. For details, refer to "Basic Settings" (in Ad-Hoc Mode) or "Profile Settings" (in Normal Mode).

Note

- After the Voice Activated Switching feature is performed, it cannot be performed again for approximately 5 seconds (default).

Manual Switching (Normal Mode Only)

You can change the display position of site images during a conference to one of the following 3 positions. For details, refer to "Changing Display Position of Site Images (Normal Mode Only)".

- The first priority position
- The last priority position (e.g., The eighth priority position for CP8)
- Hide

Fixed Display Position (Normal Mode Only)

The display position of site images can be preconfigured by profile. For details, refer to "Profile Settings".

Note

- The order of registration corresponds with the display priority.

Presentation Mode

A site's image can be displayed in full screen display. This is useful for sharing images from the computer or the sub video camera among conference participants. For details, refer to "Selectable Video Source (Presentation Mode) (On-Site Operation)".

Settings for HD/SD Video

The HDVC-MPCS sends either HD or SD video, depending on the bandwidth setting in the HD/SD video settings, the types of connected devices, and available bandwidth. It is possible to configure the screen layout to use during a conference and set the site name display for each video type. For details, refer to "Settings and Registration".

KX-VC Series NAT Traversal Service

"KX-VC Series NAT Traversal Service" is a service that allows you to easily set up and operate an affordable communication environment for the HD Visual Communications System. Also, you can assign a unique number (Terminal ID) to the unit, which allows the unit to be called with a unique, 7-digit number instead of the IP address. This means communication can be initiated as if calling a telephone. To use this service, registration is necessary. For details, contact your dealer.

Message from KX-VC Series NAT Traversal Service

When you receive a message from KX-VC Series NAT Traversal Service, the message "**Please check a message by Web console**" is displayed on the site's screen when you join a conference. Also, the Message button on the screen of the HDVC-MPCS Console becomes active (changes from grey to blue). By clicking the button, messages about the failure state and information about the service period of KX-VC Series NAT Traversal Service is displayed. Be sure to check these messages.

Log in/Log out

Log in

1. From a computer, access the HDVC-MPCS Console log in page ([http://\[IP address for the HDVC-MPCS Console\]/hdvc_mpcs/index.cgi](http://[IP address for the HDVC-MPCS Console]/hdvc_mpcs/index.cgi)).

Note

- The IP address for the HDVC-MPCS Console is the IP address of the server that has the HDVC-MPCS installed. If the server has 2 IP addresses, use either IP address.
- Select **"English"** from the drop-down list in the upper right corner of the screen. The screens are displayed in the selected language after clicking **"OK"** in step 4.

2. Click **"Login"**.



- The authentication screen is displayed.

3. Enter user name and password.
4. Click **"OK"**.
 - The Home screen is displayed.

Note

- If the terms of use screen is displayed, perform the following procedure:
 1. Read the license agreement thoroughly, and if you agree to the terms, select **"I agree"**.
 2. Check the **"Do not ask me again"** check box, and then click **"OK"**.
You can confirm the license agreement on the information display screen. For details, refer to "About HDVC-MPCS".

Log out

1. Close all the displayed browsers.
 - You are logged out from the HDVC-MPCS Console.

Starting a Conference

Making a Conference In Normal Mode

A conference is made with the sites registered in a profile. You can select which sites participate in the conference and which sites to not dial out to, from the registered sites.

1. Click the **"Home"** screen selecting tab.
 - The Home screen is displayed.
2. Click the **"Conference Start/End"** tab in the operation area.
 - The select conference mode screen is displayed.
3. Set the following items:



"Conference Mode": Select **"Normal Mode"**.

"Profile": Select the profile to use from the drop-down list.

Note

- To select a profile, it is necessary to configure the profile in advance (Page 31).

4. Click **"Next"**.
 - The conference start screen is displayed.

5. In "Screen Layout", select the screen layouts to use for HD video and SD video.



Note

- For details about the types of screen layout, refer to "Screen Layout Pattern (Page 12)".
- This operation cannot be performed if "Auto" is set to "Screen Layout Switching" in the profile selected in step 3.

6. Select the sites to not participate in the conference.
1. Select the sites to not participate in the conference from the "Participant" list.
 2. Click "<<Remove".
 - Selected sites are moved to the "Non Participant" list.

Note

- This operation is not necessary if all the sites registered in the profile will participate in the conference.
- Once the conference starts, the sites in the "Non Participant" list cannot participate in the conference.
- To start a conference, it is necessary to have 2 or more sites included in the "Participant" list. Therefore, it is not possible to move sites to the "Non Participant" list when only 2 sites are included in the "Participant" list.
- In the "Participant" list, you cannot include more sites than the number of registered license ports.

7. Select sites to not dial out to.
1. Uncheck the "Dial Out" check box for sites to not dial out to, from the "Participant" list.

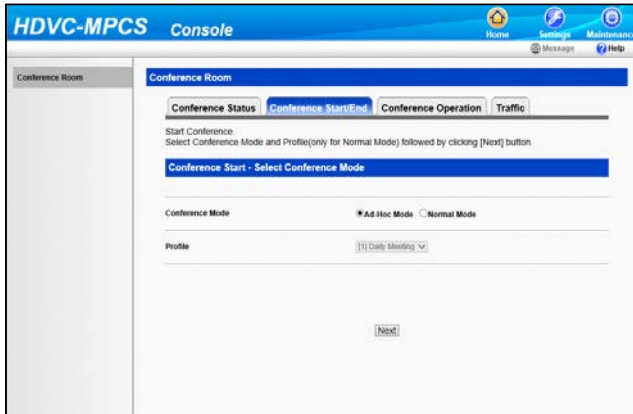
Note

- This operation is not necessary if you will dial out to all sites in the "Participant" list.
- If you uncheck the "Dial Out" check box, all sites will be unchecked.

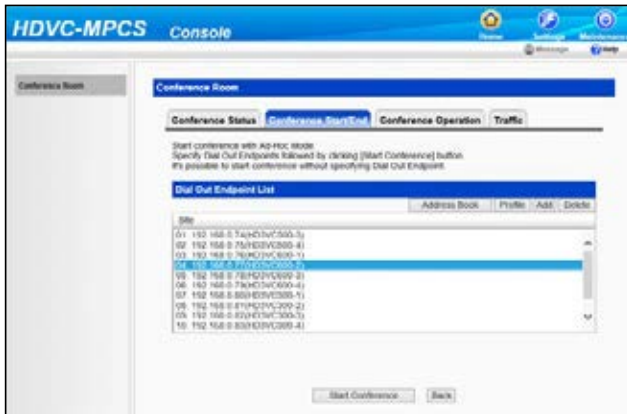
8. Click "Start Conference".
- The sites in the "Participant" list with the "Dial Out" check box checked are dialled. The conference starts when the sites answer.

Making a Conference In Ad-Hoc Mode

1. Click the **"Home"** screen selecting tab.
 - The Home screen is displayed.
2. Click the **"Conference Start/End"** tab in the operation area.
 - The select conference mode screen is displayed.
3. Select **"Ad-Hoc Mode"** in **"Conference Mode"**.



4. Click **"Next"**.
 - The conference start screen is displayed.
5. Select sites to dial out to by following one of the following instructions.



Select from the address book:

1. Click **"Address Book"**.
2. Select sites to dial out to.
3. Click **"OK"**.

Select from the profile:

1. Click **"Profile"**.
2. Enter the ID number of the profile to dial out to.
3. Click **"OK"**.

Enter the address directly:

1. Click **"Add"**.
2. Enter the site's IP address or the Terminal ID of the KX-VC Series NAT Traversal Service to dial out to.
3. Click **"OK"**.

- The sites that will be dialled are displayed in the **"Dial Out Endpoint List"**.

Note

- You cannot select more sites than the number of registered license ports.
- You cannot add sites which have the same IP address or the same Terminal ID for the KX-VC Series NAT Traversal Service.
- Perform the following operation if you want to delete sites from the **"Dial Out Endpoint List"**.
 1. Select the sites you want to delete.
 2. Click **"Delete"**.
 3. Click **"OK"**.

6. Click **"Start Conference"**.

- The sites in the **"Dial Out Endpoint List"** are dialled out to. The conference starts when the sites answer.

Operation During a Conference

Changing Display Position of Site Images (Normal Mode Only)

Note

- To perform this operation, **"Display Position Switching"** in the profile must be set to **"Manual"**. For details, refer to "Profile Settings".
1. Click the **"Home"** screen selecting tab.
 - The Home screen is displayed.
 2. Click the **"Conference Operation"** tab in the operation area.
 - The conference operation screen is displayed.
 3. Select the sites for which you want to change the display position, from the **"Active Participant List"**.



4. Select the display position from the **"Display Position Switching"** drop-down list.
"Top": The first priority position
"Bottom": The last priority position
"Hide": Not displayed
5. Click **"Execute"**.
 - A dialogue box to confirm the change of the display position is displayed.
6. Click **"OK"**.
 - The display position of the site is changed.

Muting/Unmuting the Audio (Normal Mode only)

Note

- To perform this operation, **"Manual Control"** in the profile must be set to **"Enable"**. For details, refer to "Profile Settings".
1. Click the **"Home"** screen selecting tab.
 - The Home screen is displayed.
 2. Click the **"Conference Operation"** tab in the operation area.
 - The conference operation screen is displayed.
 3. Select the site you want to mute/unmute from the **"Active Participant List"**.



4. Select **"ON"** (mute) or **"OFF"** (unmute) for **"Mute/Unmute Switching"**.
5. Click **"Execute"**.
 - A dialogue box to confirm the muting/unmuting is displayed.
6. Click **"OK"**.
 - The selected site is muted/unmuted.

Changing Screen Layout (Normal Mode Only)

Note

- To perform this operation, **"Screen Layout Switching"** in the profile must be set to **"Manual"**. For details, refer to "Profile Settings".
- Click the **"Home"** screen selecting tab.
 - The Home screen is displayed.
 - Click the **"Conference Operation"** tab in the operation area.
 - The conference operation screen is displayed.
 - Select the screen layout you want to use for HD or SD video from the **"Screen Layout Switching"** drop-down list.



- Click **"Execute"**.
 - A dialogue box to confirm the change of the screen layout is displayed.
- Click **"OK"**.
 - The screen layout during a conference is changed.

Displaying/Hiding the Site's Name

You can select whether to display the site's name on each site image displayed on the site's screens.

Note

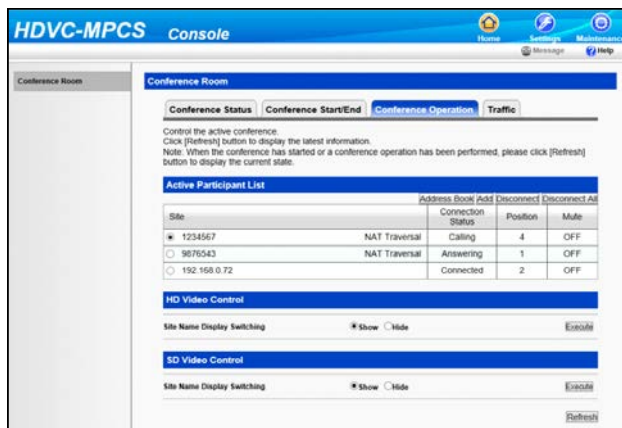
- The setting for displaying/hiding the site's name is applied to all sites. Individual settings for each site cannot be made.
 - When displaying the site's name, hide the guides and icons for the site. For details, refer to the Operating Manual or User Manual of the HD Visual Communication Unit.
- Click the **"Home"** screen selecting tab.
 - The Home screen is displayed.
 - Click the **"Conference Operation"** tab in the operation area.
 - The conference operation screen is displayed.

3. Select **"Show"** or **"Hide"** for **"Site Name Display Switching"**.

When in Normal Mode:



When in Ad-Hoc Mode:



4. Click **"Execute"**.
 - A dialogue box to confirm the displaying/hiding of the site name is displayed.
5. Click **"OK"**.
 - The site's name is displayed/hidden.

Adding Sites during a Conference

Note

- You cannot add more sites than the number of registered license ports.

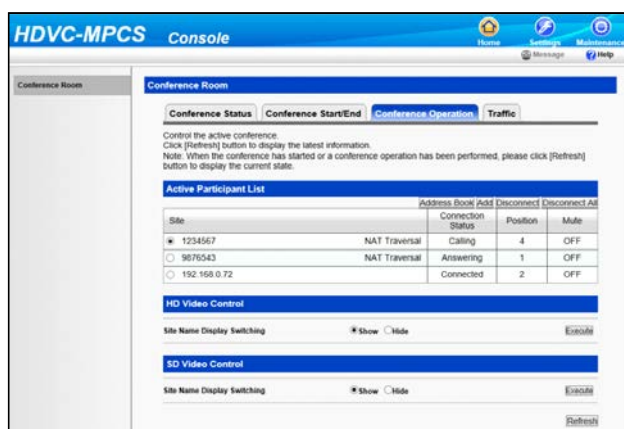
1. Click the **"Home"** screen selecting tab.
 - The Home screen is displayed.
2. Click the **"Conference Operation"** tab in the operation area.
 - The conference operation screen is displayed.

3. Select the sites you want to add.
When in Normal Mode:



1. Click **"Add"**.
 - Sites in the **"Participant"** list are displayed.
2. Select the sites you want to add.
3. Click **"OK"**.
 - The selected sites are dialled out to.

When in Ad-Hoc Mode:



1. Select the sites you want to add by performing one of the following procedures:
Select from the address book:
 - a. Click **"Address Book"**.
 - b. Select the sites you want to add.
 - c. Click **"OK"**.

Enter the address directly:

- a. Click **"Add"**.
- b. Enter the IP address or the Terminal ID of the KX-VC Series NAT Traversal Service of the site you want to add.
- c. Click **"OK"**.
 - The selected sites are dialled out to.

Note

- If the site has been added, the site's name (or IP address) and **"joined"** will be displayed on the site's screen for approximately 5 seconds. To check the addition of the site on the site's screen, hide the guides and icons for the site. For details, refer to the Operating Manual or User Manual of the HD Visual Communication Unit.

Disconnecting a Site from the Conference

1. Click the **"Home"** screen selecting tab.
 - The Home screen is displayed.
2. Click the **"Conference Operation"** tab in the operation area.
 - The conference operation screen is displayed.
3. Select the site you want to disconnect by performing one of the following procedures:

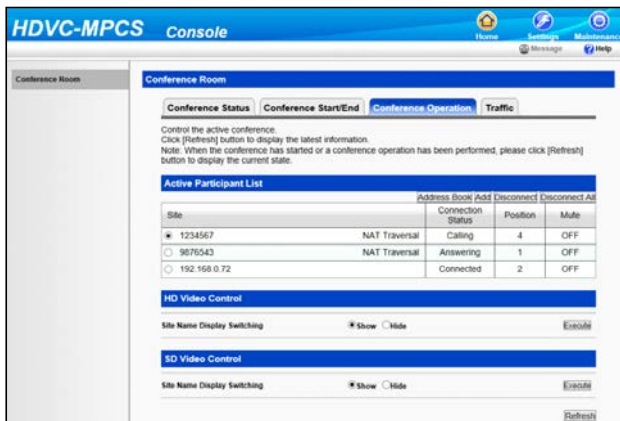
Select from the **"Active Participant List"**:

 1. Select the site you want to disconnect from **"Site"**.

When in Normal Mode:



When in Ad-Hoc Mode:



2. Click **"Disconnect"**.
 - A dialogue box to confirm the disconnection is displayed.

3. Click **"OK"**.
 - The selected site is disconnected from the conference.

Disconnect all sites:

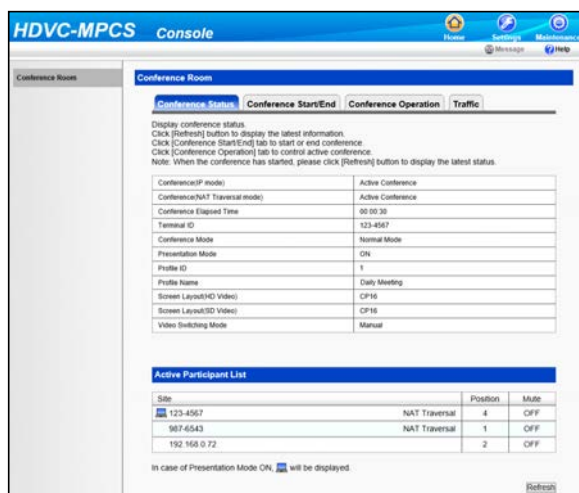
1. Click **"Disconnect All"**.
 - A dialogue box to confirm the disconnection is displayed.
2. Click **"OK"**.
 - All sites are disconnected from the conference.

Note

- If the site has been disconnected, the site's name (or IP address//Terminal ID of the KX-VC Series NAT Traversal Service) and **"left"** will be displayed on the site's screen for approximately 5 seconds. To check the disconnection of the site on the site's screen, hide the guides and icons for the site. For details, refer to the Operating Manual or User Manual of the HD Visual Communication Unit.

Checking the Status of the Conference

1. Click the **"Home"** screen selecting tab.
 - The Home screen is displayed.
2. Click the **"Conference Status"** tab in the operation area.
 - The conference status screen is displayed.



Note

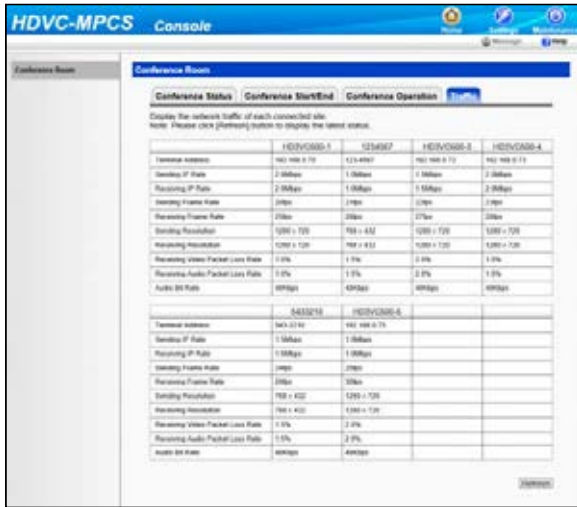
- Click **"Refresh"**, and the latest status will be shown on the screen.

Checking the Traffic

The status of the traffic for the sites in a conference is displayed.

1. Click the **"Home"** screen selecting tab.
 - The Home screen is displayed.

2. Click the **"Traffic"** tab in the operation area.
 - The traffic status screen is displayed.



Note

- When a site in a conference is using **"NAT Traversal Service"**, the Terminal ID is displayed in **"Terminal Address"**.
- Click **"Refresh"**, and the latest status will be shown on the screen.

Ending a Conference

1. Click the **"Home"** screen selecting tab.
 - The Home screen is displayed.
2. Click the **"Conference Start/End"** tab in the operation area.
3. Click **"End Conference"**.



- The conference ends with all the sites in the conference disconnected, and then the select conference mode screen is displayed.

Joining a Conference (Dial In) (On-Site Operation)

If you call the IP address of the HDVC-MPCS for a conference or Terminal ID of the KX-VC Series NAT Traversal Service (dial in) from the HD Visual Communication Unit or the HD Visual Communication Mobile, you can join a conference. For details, refer to the Operating Manual or User Manual of the HD Visual Communication Unit or the Help of the HD Visual Communication Mobile.

Note

- When in Normal Mode, you cannot join a conference if you call from a site that is not in the "**Participant**" list.
- The IP address of the HDVC-MPCS for a conference is specified in "Network Status" in the maintenance menu list.

Disconnecting from a Conference (On-Site Operation)

If you end a conference using the HD Visual Communication Unit or the HD Visual Communication Mobile, you can disconnect from the HDVC-MPCS conference. For details, refer to the Operating Manual or User Manual of the HD Visual Communication Unit or the Help of the HD Visual Communication Mobile.

Selectable Video Source (Presentation Mode) (On-Site Operation)

By connecting your computer or sub video camera to the HD Visual Communication Unit, you can show your computer's screen or video camera image to other sites in a conference. Remote control operation from the site you want to show is required.

1. Select the image you want to display.

Computer's screen:

1. Press **[PC]**.

- The computer's screen is displayed. The same screen is displayed on other sites' displays.

Sub video camera's image:

1. Press **[Camera Sub]**.

- The sub video camera's image is displayed. The same image is displayed on other sites' displays.

2. Press **[Camera Main]** to restore the original image.

Note

- When using software version 3.00 or earlier for the HD Visual Communication Unit, it is necessary to perform the following procedure for displaying the site's image in full screen.

1. Press **[*][1][0]**.

- The site's image is displayed in full screen.

2. Select the image you want to display.

3. Press **[Camera Main]** to restore the original image.

4. Press **[*][1][1]**.

- The screen layout returns to the layout pattern in use before step 1 was performed.

Dialling out to Sites (Ad-Hoc Mode) (On-Site Operation)

You can dial out to sites using the remote control of the HD Visual Communication Unit. After connecting to the HDVC-MPCS, you can dial out to a registered site by entering the ID number of its profile using the remote control.

Note

- To use this feature, an Ad-Hoc conference must be in progress.

Dialling out to Sites

1. Join a conference using dial in.
2. Press **#[X][X][X]**.
 - The HDVC-MPCS starts to dial out to the sites assigned to the conference number **[X][X][X]**.

Note

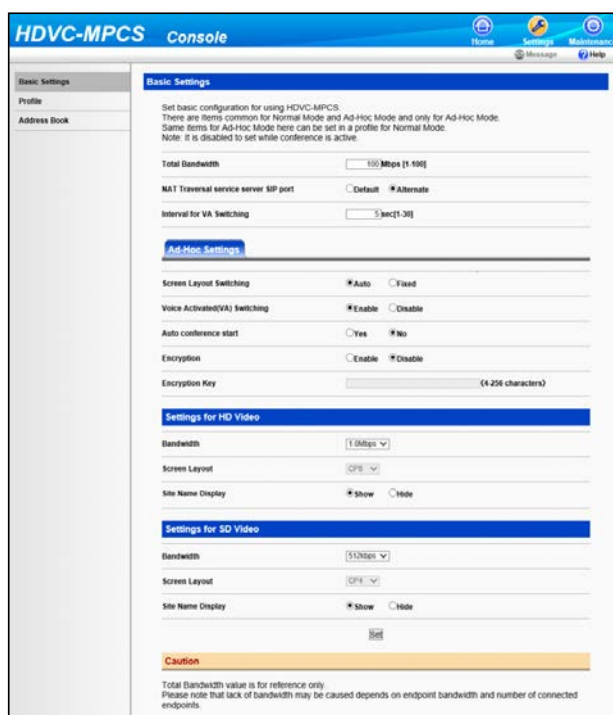
- The conference number **[X][X][X]** should correspond to the ID number of the profile (101-110) set in the profile settings.
- You can dial out any number of times during a conference. Therefore, it is possible to dial out again to an unconnected site.

Disconnecting Other Sites from the Conference

1. Press **#[1][9][9]**.
 - All sites are disconnected from the conference except for the site that performed this operation.

Basic Settings

1. Click the **"Settings"** screen selecting tab.
 - The Basic settings screen is displayed.
2. Click **"Basic Settings"** in the setting menu list.
3. Set the following items in the setting area.



Item	Description	Value range	Default
Total Bandwidth	Set the total bandwidth that the HDVC-MPCS can use for performing a conference with the sites.	1 Mbps-100 Mbps (Unit: 1 Mbps)	100 Mbps
NAT Traversal service server SIP port	Selects the SIP port to use depending on the connected network.	Default, Alternate (Default: 5060, Alternate: 15060)	Default
Interval for VA Switching	Specifies the time interval after which the Voice Activated Switching feature is enabled again after the feature has been performed. The Voice Activated Switching feature is disabled until the specified time passes.	1 to 30 seconds (per second)	5 seconds
Screen Layout Switching ¹⁾	Set whether to change the screen layout in the conference automatically.	Auto, Fixed	Auto

Item	Description	Value range	Default
Voice Activated(VA) Switching ¹	Specifies whether to use the Voice Activated Switching feature (The site with the highest volume [speaker] is displayed in the first priority position automatically).	Enable, Disable	Enable
Auto conference start ¹	Set whether to start an Ad-Hoc conference automatically when the HDVC-MPCS restarts.	Yes, No	No
Encryption ^{1,2}	Set whether to enable encryption or not.	Enable, Disable	Disable
Encryption Key ^{1,2}	Set the encryption key when the encryption setting is enabled.	4-256 characters	—
Settings for HD Video			
Bandwidth ¹	Set the maximum bandwidth per site connected with HD video. Individual settings for each site cannot be made.	512 kbps, 768 kbps, 1.0 Mbps, 1.5 Mbps, 2.0 Mbps	1.0 Mbps
Screen Layout ¹	Set the screen layout in a conference connected with HD video.	CP1, CP4, CP6, CP8, CP10, CP13, CP16	CP8
Site Name Display ¹	Specifies whether to display the site's name on each site image during a conference connected with HD video.	Show, Hide	Show
Settings for SD Video			
Bandwidth ¹	Set the maximum bandwidth per site connected with SD video. Individual settings for each site cannot be made.	384 kbps, 512 kbps, 768 kbps, 1.0 Mbps, 1.5 Mbps	512 kbps
Screen Layout ¹	Set the screen layout in a conference connected with SD video.	CP1, CP4, CP6, CP8, CP10, CP13, CP16	CP4
Site Name Display ¹	Specifies whether to display the site's name on each site image during a conference connected with SD video.	Show, Hide	Show

Note

- Make sure to set the value of "**Bandwidth**" for the HD video settings higher than that for the SD video settings.
- If the value of "**Bandwidth**" for the SD video settings is lower than the participants' bandwidth, a conference is established with HD video and the HDVC-MPCS sends HD video image. However, for the participants incapable of receiving HD video image, SD video image is sent. Also, if the

value of "**Bandwidth**" for the SD video settings is higher than the bandwidth of the participants, a conference is established with SD video and the HDVC-MPCS sends SD video image.

- ¹ The items are for Ad-Hoc Mode only. For Normal Mode, it is possible to configure the items in a profile.
² If you configure the encryption settings, you will only be able to establish video conference calls with a party that has the same encryption key, so you can prevent making calls to, or receiving calls from, unknown parties unintentionally.

4. Click "**Set**".
 - Settings are saved and a message showing that saving is complete is displayed.
5. Click "**OK**".
 - The settings screen is displayed.

Profile Settings

Registering/Editing Profiles

Note

- The range of ID numbers you can register to profiles for Normal Mode is from 1 to 10.
 - The range of ID numbers you can register to dial-out profiles for Ad-Hoc Mode is from 101 to 110.
1. Click the "**Settings**" screen selecting tab.
 - The Basic settings screen is displayed.
 2. Click "**Profile**" in the setting menu list.
 - The profile list screen is displayed.
 3. Click the ID number of the profile you want to register or edit.

ID	Profile Name	Description
1	Daily Meeting	Every morning
2	Not Registered	
3	Not Registered	
4	Not Registered	
5	Not Registered	
6	Not Registered	
7	Not Registered	
8	Not Registered	
9	Not Registered	
10	Not Registered	
101	Not Registered	
102	Not Registered	
103	Not Registered	
104	Not Registered	
105	Not Registered	
106	Not Registered	
107	Not Registered	
108	Not Registered	
109	Not Registered	
110	Not Registered	

- The profile edit screen is displayed.

Settings and Registration

4. Set the following items in the setting area.

The screenshot shows the 'Edit Profile' configuration page in the HDVC-MPCS Consofe interface. The page is divided into several sections:

- Profile Information:** Fields for Profile ID, Profile Name (up to 50 characters), and Description (up to 200 characters).
- Encryption:** Radio buttons for 'Enable' and 'Disable', and an 'Encryption Key' field (4-256 characters).
- Endpoints List:** A table with columns for IP, MAC, and Device Name. The table contains 10 rows of data.
- General Settings:** Radio buttons for 'Manual Control' (Enable/Disable), 'Screen Lockout Switching' (Auto/Manual), and 'Display Position Switching' (Voice Activation/Manual).
- Settings for HD Video:** A 'Bandwidth' dropdown menu and a 'Site Name Display' radio button (Show/Hide).
- Settings for SD Video:** A 'Bandwidth' dropdown menu and a 'Site Name Display' radio button (Show/Hide).

Item	Description	Value range	Default
Profile Name ¹	Set the profile name.	Up to 50 characters	—
Description ¹	Set the description of the profile.	Up to 200 characters	—
Encryption ²	Set whether to enable encryption or not.	Enable, Disable	Disable
Encryption Key ³	Set the encryption key when the encryption setting is enabled.	4-256 characters	—

Item	Description	Value range	Default
Endpoint List ¹	<p>Set the sites that can participate in the conference.</p> <p>Note</p> <ul style="list-style-type: none"> The order of registration corresponds with the display priority. <p>Select from the address book:</p> <ol style="list-style-type: none"> Click "Address Book". Select the site you want to set, and click "OK". <p>Enter the address directly:</p> <ol style="list-style-type: none"> Click "Add". Enter the IP address or the KX-VC Series NAT Traversal Service Terminal ID of the site in "IP Address", and then click "OK". <p>Note</p> <ul style="list-style-type: none"> Enter the IP address within the following range: Class A: 1.0.0.0–126.255.255.255 Class B: 128.0.0.0–191.255.255.255 Class C: 192.0.0.0–223.255.255.255 You cannot add sites that have the same IP address or Terminal ID for the KX-VC Series NAT Traversal Service. 	2 to 32 sites ⁴	—
Manual Control	Set whether to change the screen layout or display position of the site image manually during a conference. When this setting is disabled, the order of registration in " Endpoint List " corresponds to the display priority.	Enable, Disable	Enable
Screen Layout Switching	Set whether to change the screen layout automatically according to the number of sites in the conference or manually.	Auto, Manual	Manual

Item	Description	Value range	Default
Display Position Switching	Set whether to display the site with the highest volume (speaker) in the first priority position automatically or to change the display position of the site image manually.	Voice Activation, Manual	Manual
Settings for HD Video			
Bandwidth	Set the maximum bandwidth per site connected with HD video. Individual settings for each site cannot be made.	512 kbps, 768 kbps, 1.0 Mbps, 1.5 Mbps, 2.0 Mbps	1.0 Mbps
Site Name Display	Specifies whether to display the site's name on each site image during a conference connected with HD video.	Show, Hide	Show
Settings for SD Video			
Bandwidth	Set the maximum bandwidth per site connected with SD video. Individual settings for each site cannot be made.	384 kbps, 512 kbps, 768 kbps, 1.0 Mbps, 1.5 Mbps	512 kbps
Site Name Display	Specifies whether to display the site's name on each site image during a conference connected with SD video.	Show, Hide	Hide

Note

- Make sure to set the value of "**Bandwidth**" for the HD video settings higher than that for the SD video settings.
- If the value of "**Bandwidth**" for the SD video settings is lower than the participants' bandwidth, a conference is established with HD video and the HDVC-MPCS sends HD video image. However, for the participants incapable of receiving HD video image, SD video image is sent. Also, if the value of "**Bandwidth**" for the SD video settings is higher than the bandwidth of the participants, a conference is established with SD video and the HDVC-MPCS sends SD video image.

^{*1} These settings are available for profiles for dial out in Ad-Hoc Mode. These settings are used when configuring a profile with an ID number from 101 to 110.

^{*2} If you configure the encryption settings, you will only be able to establish video conference calls with a party that has the same encryption key, so you can prevent making calls to, or receiving calls from, unknown parties unintentionally.

^{*3} While being entered, the characters of the encryption key are displayed, but once the settings are saved, all the characters will be displayed as asterisks (*), and you will no longer be able to check the encryption key on the screen. Record the encryption key beforehand, and store it in a safe location.

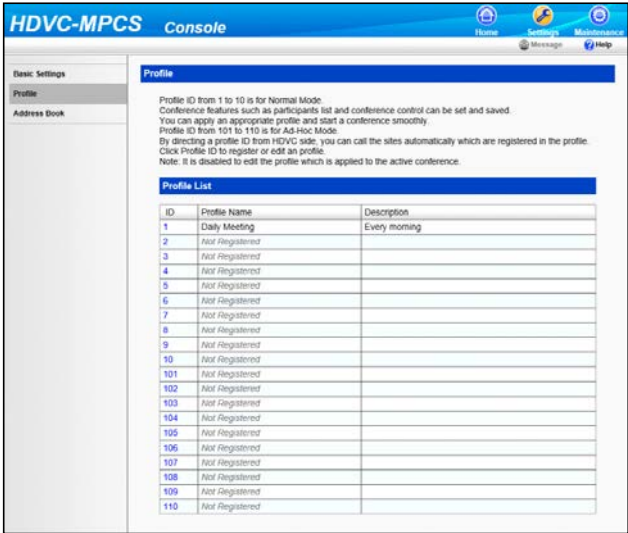
^{*4} The maximum number of sites that can join a conference at the same time is 16 (depending on the number of license ports). You can select which sites to join a conference from the sites that are registered in the profile at the start of the conference.

5. Click "Set".

- The setting of the profile is saved, and the profile list screen is displayed.

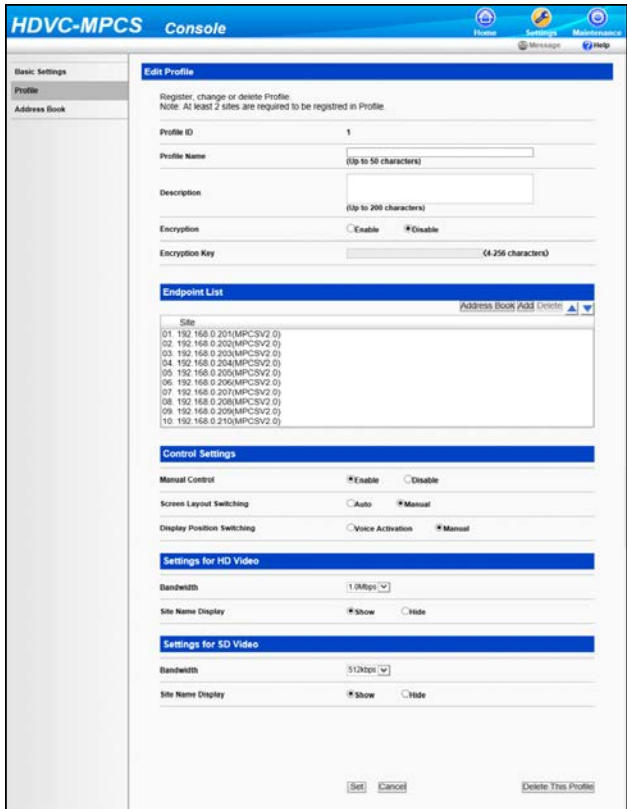
Deleting Profile

1. Click the **"Settings"** screen selecting tab.
 - The Basic settings screen is displayed.
2. Click **"Profile"** in the setting menu list.
 - The profile list screen is displayed.
3. Click the ID number of the profile you want to delete.



- The profile edit screen is displayed.

4. Click "Delete This Profile".



- A message to confirm deletion is displayed.

5. Click "OK".

- The profile is deleted, and the profile list screen is displayed.

Address Book Settings

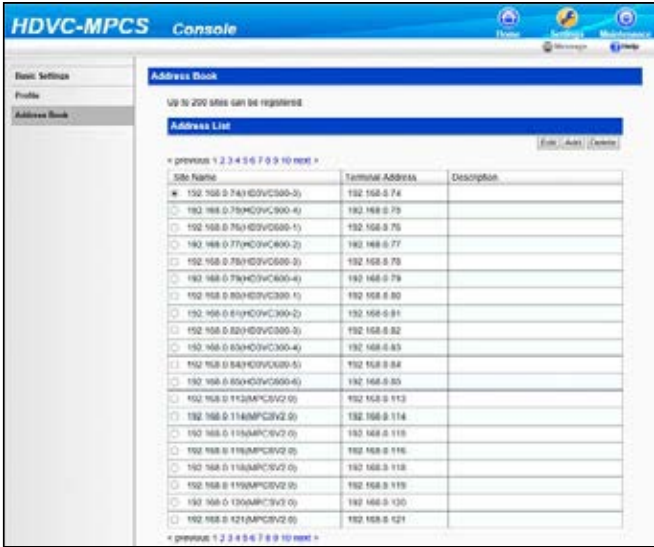
Registering/Editing the Address Book

Note

- You can register up to 200 sites in the address book.

1. Click the "Settings" screen selecting tab.
 - The Basic settings screen is displayed.
2. Click "Address Book" in the setting menu list.
 - The address list screen is displayed.

3. Register or edit sites in the address book.



To add a new site:

1. Click "Add".

To edit a registered site:

1. Select the site you want to edit.
2. Click "Edit".

4. Set the following items:



Item	Description	Value range	Default
Site Name	Set the site name.	Up to 50 characters	—
IP Address/Terminal ID	Set the IP address or Terminal ID of the KX-VC Series NAT Traversal Service.	IP Address (within the following ranges): Class A: 1.0.0.0–126.255.255.255 Class B: 128.0.0.0–191.255.255.255 Class C: 192.0.0.0–223.255.255.255 Terminal ID: 7 digits	—
Description	Set the description of the site.	Up to 200 characters	—

- 5. To add a new site:
Click "OK".

To edit a registered site:
Click "Update".

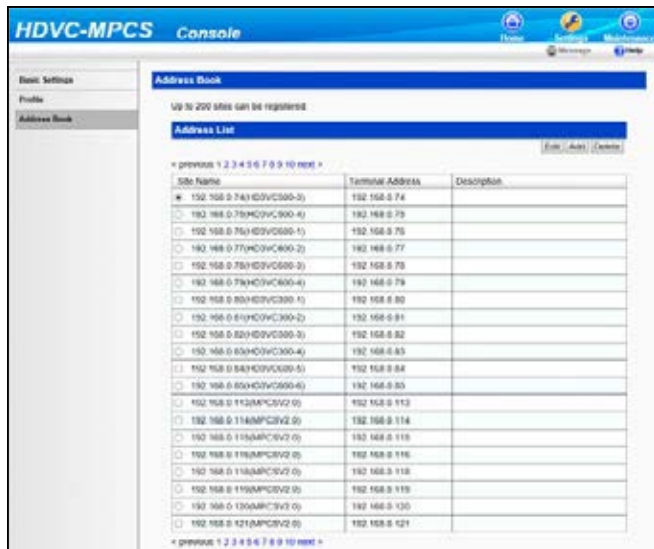
- The address book settings are saved, and the address list screen is displayed.

Note

- If you click "Reset", the settings will be returned to their original state before being edited in step 4.

Deleting a Site

- 1. Click the "Settings" screen selecting tab.
 - The Basic settings screen is displayed.
- 2. Click "Address Book" in the setting menu list.
 - The address list screen is displayed.
- 3. Select the sites you want to delete.



- 4. Click "Delete".
 - A message to confirm deletion is displayed.
- 5. Click "OK".
 - The site is deleted and the address list screen is displayed.

Activation

By performing activation (license registration), you can increase the number of sites that can participate in a conference and use the KX-VC Series NAT Traversal Service.

To perform the activation, you must obtain a Registration Key from your dealer and make a registration. First, provide your dealer with the License No. and Registration ID on the Software License Card. The dealer will enter this information into the Key Management System and then issue you with the Registration Key.

1. Click the **"Maintenance"** screen selecting tab.
 - The maintenance screen is displayed.
2. Click **"Activation"** in the maintenance menu list.
 - The activation screen is displayed.
3. Enter the Registration Key for the HDVC-MPCS or KX-VC Series NAT Traversal Service.



4. Click **"Register"**.
 - A message to confirm the performing of activation is displayed.
5. Click **"OK"**.
 - Activation is performed, and a message to show the completion of license registration is displayed.
6. Click **"OK"**.
 - The activation screen is displayed.

Note

- The features corresponding to the entered Registration Key of the HDVC-MPCS or KX-VC Series NAT Traversal Service are activated.

Network Status

You can check the network status of the HDVC-MPCS.

1. Click the **"Maintenance"** screen selecting tab.
 - The maintenance screen is displayed.

2. Click **"Network Status"** in the maintenance menu list.
 - The network status screen is displayed.



Note

- Perform the following operation if you want to change the IP address of the HDVC-MPCS for a conference. In this case, it is also necessary to change the IP address of the server. For details, contact your dealer.
 1. Click **"Change"**.
 - The IP address entering screen is displayed.
 2. Enter the IP address, and click **"OK"**.
 - The IP address is changed, and the network status screen is displayed.
- Use the following procedure to perform the connection test with the KX-VC Series NAT Traversal Service.
 1. Click **"Connection Test"**.
 - The connection test with the KX-VC Series NAT Traversal Service begins.
 2. Click **"Refresh"**.

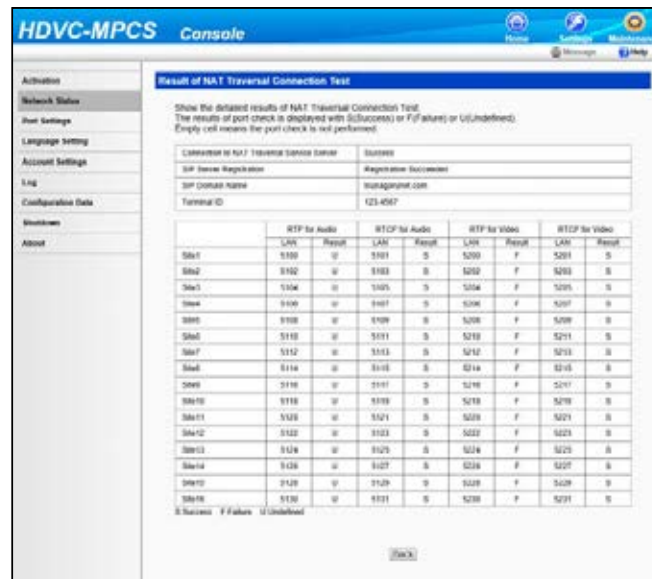


- The result of the connection test is displayed.

Note

- If some items are still being tested, click **"Refresh"** again after a few seconds.
3. Click **"Show Results"**.

- The detailed result screen is displayed.



- After the KX-VC Series NAT Traversal Service period expires, clicking "**Disable NAT Traversal Service**" will stop the service expiration message from appearing.

Port Setting

You can configure the ports for connecting the HDVC-MPCS using the KC-VC Series NAT Traversal Service.

Note

- You cannot configure the ports if activation of the KX-VC Series NAT Traversal Service is not complete.
- Click the "**Maintenance**" screen selecting tab.
 - The maintenance screen is displayed.
 - Click "**Port Settings**" in the maintenance menu list.
 - The port setting screen is displayed.
 - Perform one of the following procedures to configure the settings:

Automatic entry:

 - Enter the first port number for Site 1's WAN side.
 - Click "**Auto Input for WAN**".
 - The WAN-side port numbers for other sites are assigned automatically.

1. Click "**Same port on WAN and LAN**".

 - The port numbers for the LAN side are copied to the WAN side.

Entering manually:

- Set the following items in the setting area.

Item	Description	Value range	Default
RTP for Audio (LAN)	Set the port number for the audio RTP port for the LAN side.	5100 to 5194	Site1: 5100, Site2: 5102, Site3: 5104, Site4: 5106, Site5: 5108, Site6: 5110, Site7: 5112, Site8: 5114, Site9: 5116, Site10: 5118, Site11: 5120, Site12: 5122, Site13: 5124, Site14: 5126, Site15: 5128, Site16: 5130
RTP for Audio (WAN)	Set the port number for the audio RTP port for the WAN side.	1 to 65535	—
RTCP for Audio (LAN)	Set the port number for the audio RTCP port for the LAN side.	5100 to 5194	Site1: 5101, Site2: 5103, Site3: 5105, Site4: 5107, Site5: 5109, Site6: 5111, Site7: 5113, Site8: 5115, Site9: 5117, Site10: 5119, Site11: 5121, Site12: 5123, Site13: 5125, Site14: 5127, Site15: 5129, Site16: 5131
RTCP for Audio (WAN)	Set the port number for the audio RTCP port for the WAN side.	1 to 65535	—
RTP for Video (LAN)	Set the port number for the video RTP port for the LAN side.	5200 to 5294	Site1: 5200, Site2: 5202, Site3: 5204, Site4: 5206, Site5: 5208, Site6: 5210, Site7: 5212, Site8: 5214, Site9: 5216, Site10: 5218, Site11: 5220, Site12: 5222, Site13: 5224, Site14: 5226, Site15: 5228, Site16: 5230
RTP for Video (WAN)	Set the port number for the video RTP port for the WAN side.	1 to 65535	—
RTCP for Video (LAN)	Set the port number for the video RTCP port for the LAN side.	5200 to 5294	Site1: 5201, Site2: 5203, Site3: 5205, Site4: 5207, Site5: 5209, Site6: 5211, Site7: 5213, Site8: 5215, Site9: 5217, Site10: 5219, Site11: 5221, Site12: 5223, Site13: 5225, Site14: 5227, Site15: 5229, Site16: 5231
RTCP for Video (WAN)	Set the port number for the video RTCP port for the WAN side.	1 to 65535	—

4. Click **"Set"**.
 - Settings are saved and a message showing that saving is complete is displayed.
5. Click **"OK"**.
 - A message to confirm the change of the port settings is displayed.

6. Click **"OK"**.
 - The port settings are changed, and the port setting screen is displayed.

Note

- It is necessary to configure the port settings for sites up to the number of registered licenses.

Language Setting

You can specify the language used to display messages from the KX-VC Series NAT Traversal Service.

1. Click the **"Maintenance"** screen selecting tab.
 - The maintenance screen is displayed.
2. Click **"Language Setting"** in the maintenance menu list.
 - The language setting screen is displayed.



3. Select the desired language from the **"Language"** pull-down menu.
4. Click **"Set"**.
 - Settings are saved and a message showing that saving is complete is displayed.
5. Click **"OK"**.
 - The language setting is saved, and the language setting screen is displayed.

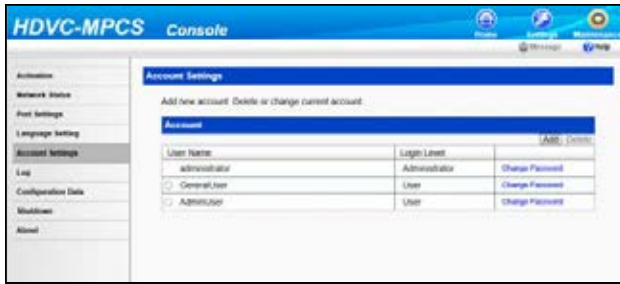
Account Setting

You can add/delete user accounts or change the password of the user account for logging in to the HDVC-MPCS Console.

Adding Accounts

1. Click the **"Maintenance"** screen selecting tab.
 - The maintenance screen is displayed.
2. Click **"Account Settings"** in the maintenance menu list.
 - The account setting screen is displayed.

3. Click "Add".



- The new account screen is displayed.

4. Set the following items:



"User Name": Enter a user name (4 to 16 characters).

"Password": Enter a password (6 to 16 characters).

"Retype Password": Re-enter the password.

"Login Level": Select **"Administrator"** or **"User"** from the drop-down list.

Note

- The characters that can be input for the user name/password are as follows:
User name: alphanumeric characters and symbols _ -
Password: alphanumeric characters and symbols ! # \$ % () - = * _
- The fields are case sensitive.

5. Click "OK".

- The configured account is added, and the account setting screen is displayed.

Deleting Accounts

1. Click the **"Maintenance"** screen selecting tab.
 - The maintenance screen is displayed.
2. Click **"Account Settings"** in the maintenance menu list.
 - The account setting screen is displayed.

3. Select the account you want to delete.



Note

- You cannot delete accounts that are being used.
4. Click **"Delete"**.
 - A message to confirm the deletion of the account is displayed.
 5. Click **"OK"**.
 - The account is deleted, and the account setting screen is displayed.

Changing the Account Password

1. Click the **"Maintenance"** screen selecting tab.
 - The maintenance screen is displayed.
2. Click **"Account Settings"** in the maintenance menu list.
 - The account setting screen is displayed.
3. Click **"Change Password"** for the account whose password you want to change.



- The password change screen is displayed.

4. Set the following items:



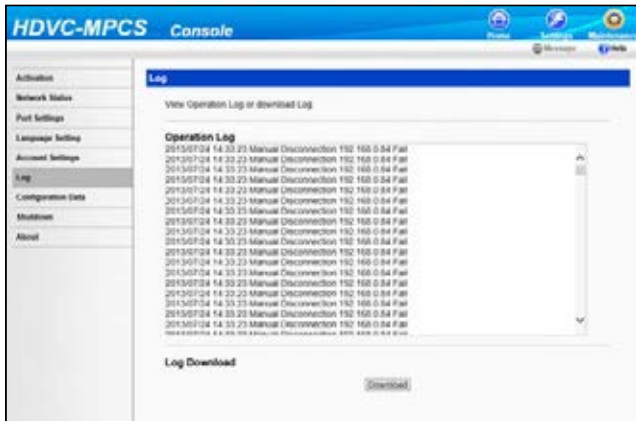
"Password": Enter a new password.
"Retype Password": Re-enter the new password.

5. Click **"OK"**.
 - The password is changed, and the account setting screen is displayed.

Log

You can confirm or obtain the history log.

1. Click the **"Maintenance"** screen selecting tab.
 - The maintenance screen is displayed.
2. Click **"Log"** in the maintenance menu list.
 - The log screen is displayed.
3. Click **"Download"** to obtain the history log.



- The screen to confirm the saving of the history log is displayed.
4. Save the file.
 - The history log file is downloaded, and the log screen is displayed.

Configuration Data

You can make a backup of or restore configuration data.

Making a Backup of the Configuration Data

1. Click the **"Maintenance"** screen selecting tab.
 - The maintenance screen is displayed.
2. Click **"Configuration Data"** in the maintenance menu list.
 - The configuration data screen is displayed.
3. Click **"Back-Up"**.



- The screen to confirm the saving of the file is displayed.
4. Save the file.
 - The backup file is downloaded, and the configuration data screen is displayed.

Restoring the Configuration Data

Note

- This operation cannot be performed during a conference.
1. Click the **"Maintenance"** screen selecting tab.
 - The maintenance screen is displayed.
 2. Click **"Configuration Data"** in the maintenance menu list.
 - The configuration data screen is displayed.
 3. Click **"Browse..."**, and select the backup file you want to restore.



4. Click **"Restore"**.
 - A message to confirm the restoration is displayed.
5. Click **"OK"**.
 - The configuration data is restored, and a message indicating the end of the restoration is displayed.

6. Click **"OK"**.
 - The configuration data screen is displayed.

Shutdown

1. Click the **"Maintenance"** screen selecting tab.
 - The maintenance screen is displayed.
2. Click **"Shutdown"** in the maintenance menu list.
 - The exit screen is displayed.
3. Select **"End HDVC-MPCS"** or **"Shutdown PC"**.



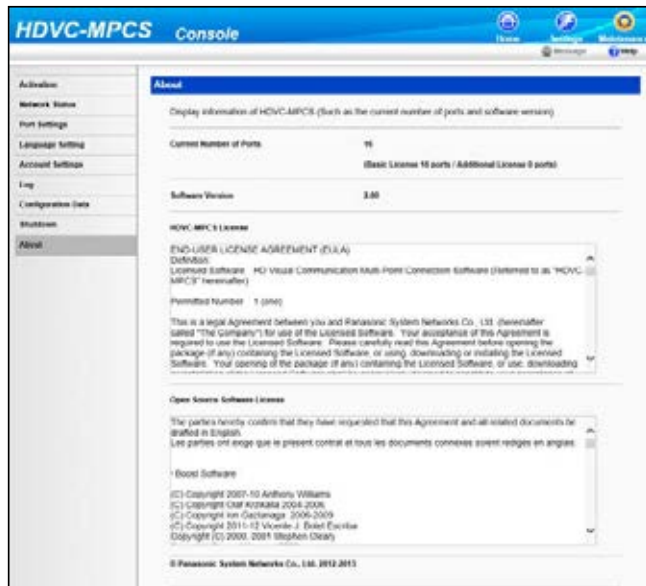
4. Click **"Execute"**.
 - A message to confirm performing the selected operation is displayed.
5. Click **"OK"**.
 - The selected operation is performed.

About HDVC-MPCS

Information such as the software version of the HDVC-MPCS and license information is displayed.

1. Click the **"Maintenance"** screen selecting tab.
 - The maintenance screen is displayed.

2. Click **"About"** in the maintenance menu list.
 - The information display screen about the HDVC-MPCS is displayed.



Troubleshooting

When a problem occurs, please refer to the following:

Basic Operation

Problem	Cause and Solution
You cannot log in to the HDVC-MPCS Console.	<ul style="list-style-type: none"> • The user name and/or password is incorrect. → Check that the capitalisation of characters is correct, and then try entering them again.
A site registered in the profile cannot participate in the conference.	<ul style="list-style-type: none"> • The site was moved to the "Non Participant" list at the start of the conference. → Before starting the conference, do not move sites from the "Participant" list if they might participate during the conference (Page 16).
You cannot start a conference.	<ul style="list-style-type: none"> • The previous conference is not terminated. → Start a conference after terminating the previous conference (Page 26).
The latest status of the conference is not displayed.	<ul style="list-style-type: none"> • The status changed after the conference status screen was displayed. → Click "Refresh" to update the screen (Page 25).
The image and the sound are distorted.	<ul style="list-style-type: none"> • The settings of the hub or router are different to those of the server. → The settings should be the same. • The bandwidth (the value of the "Bandwidth" × the number of sites in the conference) exceeds the maximum bandwidth of the HDVC-MPCS. → Adjust the configuration of the "Total Bandwidth" and "Bandwidth" so that the bandwidth does not exceed the maximum bandwidth (Page 29, Page 31). • There may be a problem with your communication lines. → Contact your network administrator.
Cannot connect with other sites.	<ul style="list-style-type: none"> • The encryption key does not match the ones at other sites. → Ask the other sites to have the same encryption key with the HDVC-MPCS. • The sites use a KX-VC500 without the Connection Enhancement feature. → Ask the sites to activate the Connection Enhancement feature. • When "Other Side Busy." is displayed on the site's display, more sites than the number of registered license ports are trying to participate in a conference. → A conference cannot be made with more sites than the number of the registered ports. The number of ports can be increased up to 16. For details, please contact your dealer. • The software version of the HD Visual Communication Unit at the sites is 2.10 or earlier. → Ask the sites to update the software. • The site is not using the HD Visual Communications System. → Ask the site to use the HD Visual Communications System.

Problem	Cause and Solution
Cannot hear sound.	<ul style="list-style-type: none"> • The sound is set to mute. → Unmute the sound (Page 20). • The microphone at the site is set to mute. → Ask the site to unmute the microphone.
The image is less visible.	<ul style="list-style-type: none"> • Guides and icons are displayed on the image. → Hide the guides and icons for the site. For details, refer to the Operating Manual or User Manual of the HD Visual Communication Unit.

If These Messages Appear

Message	Cause and Solution
Hardware information and Registration Key unmatched.	<ul style="list-style-type: none"> • The server is damaged, or the server or parts may have been replaced. → Contact your dealer.

System Specifications

Number of Simultaneous Conferences		1 Conference	
Number of Sites		Up to 16 Sites (Depending on the number of the license ports)	
Connection Mode		IP Mode, NAT Traversal Service Mode	
Maximum Bandwidth		2.0 Mbps (IP Rate)	
Call Control	Standard	SIP (TCP/UDP)	
	Connection	Dial In, Dial Out Based On the Web Operation, Dial Out Using External Control I/F	
Video	Transmission Capacity	Profile	H.264 Baseline Profile Level 3.1, H.264 High Profile Level 3.1
		Video Resolution	720p, w 432p
		Computer Resolution	VGA, SVGA, XGA, 720p
	Reception Capacity	Profile	H.264 Baseline Profile Level 1.3-3.1, H.264 High Profile Level 3.1
		RTP/MTU Size	1240 byte
	RTP Type		RTP Standard (Single NAL/Non-Interleaved)
	QoS		Bandwidth Control, ARQ (Automatic Repeat-reQuest)
	Number of Screens	CPn	CP1, CP4, CP6, CP8, CP10, CP13, CP16
	Audio	Codec	Profile
RTP/Transmission Interval		20 milliseconds	
QoS		ARQ (Automatic Repeat-reQuest)	
Encryption		AES128	
Screen Display	Number of Screens		CP1, CP4, CP6, CP8, CP10, CP13, CP16
	Description		Combined Screen Mode (Displaying a combined screen of sites' image) Presentation Mode (Displaying a full screen of the site sharing a computer screen/ sub video camera image)
	Conference Mode		Normal Mode, Ad-Hoc Mode

Index

U

User 7

A

Account 43
Address Book 36
Ad-Hoc Mode 11, 18

B

Browser 7

C

Conference Mode 11

D

Displaying Other Video Sources 14, 27

E

End Conference 26

K

KX-VC Series NAT Traversal Service 14

M

Mute 20

N

Normal Mode 11, 16

P

Presentation Mode 14, 27
Privacy 6
Profile 11, 31
Protecting Information 6

R

Right of Publicity 6

S

Screen Display 8
Screen Layout
 Layout Change 13, 21
 Pattern 12
Security 6
Software Version 48
Specifications 52
Start Conference 16

T

Troubleshooting 50

Panasonic System Networks Co., Ltd.

1-62, 4-chome, Minoshima, Hakata-ku, Fukuoka 812-8531, Japan

Web Site: <http://www.panasonic.net/>

Panasonic Corporation of North America

Two Riverfront Plaza, Newark, NJ 07102-5490

Web Site: <http://www.panasonic.com/bts>

Panasonic Canada Inc.

5770 Ambler Drive, Mississauga, Ontario, L4W 2T3

Web Site: <http://www.panasonic.ca>

Copyright:

This material is copyrighted by Panasonic System Networks Co., Ltd., and may be reproduced for internal use only. All other reproduction, in whole or in part, is prohibited without the written consent of Panasonic System Networks Co., Ltd.

© Panasonic System Networks Co., Ltd. 2012