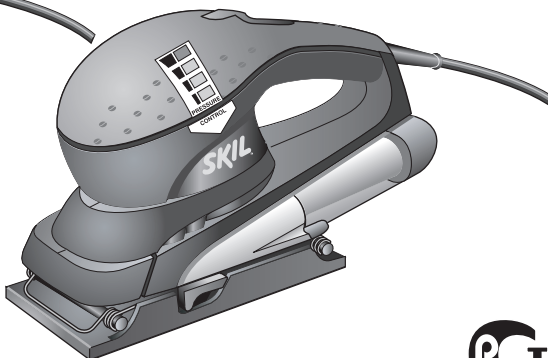


# SKIL®

## ORBITAL SANDER 7350 (F0157350..) 7360 (F0157360..) 7365 (F0157365..)



<b>GB</b>	INSTRUCTIONS	page 5	<b>PL</b>	INSTRUKCJA	strona 40
<b>F</b>	INSTRUCTIONS	page 7	<b>RU</b>	ИНСТРУКЦИИ	страница 43
<b>D</b>	HINWEISE	Seite 10	<b>UA</b>	ІНСТРУКЦІЯ	страница 46
<b>NL</b>	INSTRUCTIES	bladz. 12	<b>GR</b>	ΟΔΗΓΙΕΣ	σελίδα 49
<b>S</b>	INSTRUKTIONER	sida 15	<b>RO</b>	INSTRUCȚIUNI	pagina 52
<b>DK</b>	INSTRUKTION	side 17	<b>BG</b>	УКАЗАНИЕ	страница 55
<b>N</b>	ANVISNING	side 20	<b>SK</b>	POKYNY	strana 58
<b>FIN</b>	OHJEET	sivu 22	<b>HR</b>	UPUTE	stranica 60
<b>E</b>	INSTRUCCIONES	pág. 24	<b>SCG</b>	UPUTSTVA	stranica 63
<b>P</b>	INSTRUÇÕES	pág. 27	<b>SLO</b>	NAVODILA	stran 65
<b>I</b>	ISTRUZIONI	pag. 30	<b>EST</b>	KASUTUSJUHEND	lehekülg 67
<b>H</b>	LEÍRÁS	oldal 32	<b>LV</b>	INSTRUKCIJA	lappuse 70
<b>CZ</b>	POKYNY	strana 35	<b>LT</b>	INSTRUKCIJA	puslapis 73
<b>TR</b>	KILAVUZ	sayfa 37			

[www.skileurope.com](http://www.skileurope.com)

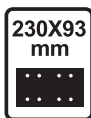


1

### 7350

180 W

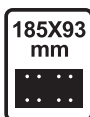
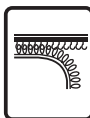
1,6 kg



### 7360

240 W

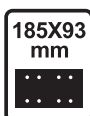
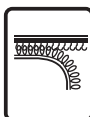
1,6 kg



### 7365

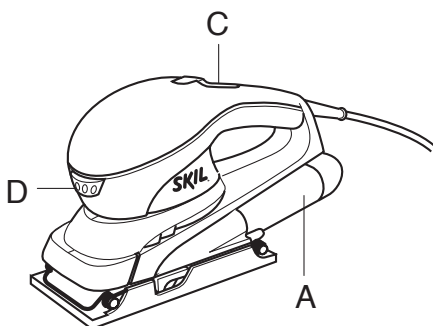
240 W

1,6 kg

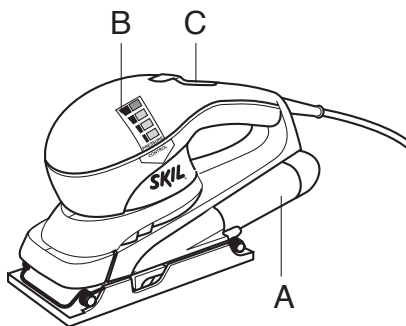


2

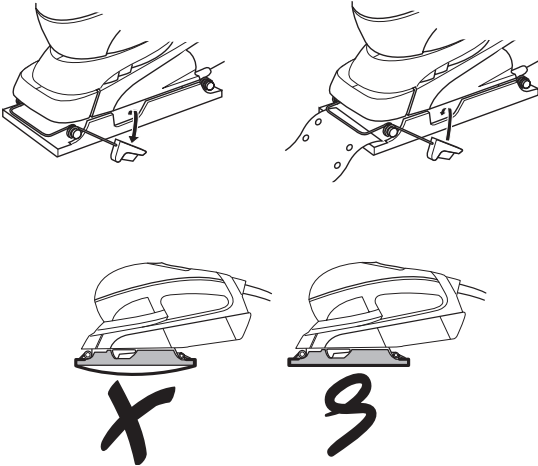
### 7360



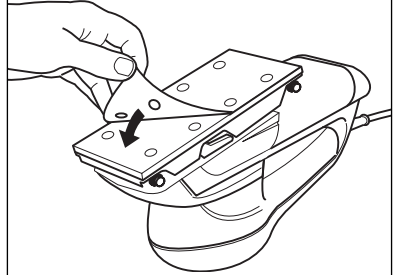
### 7365



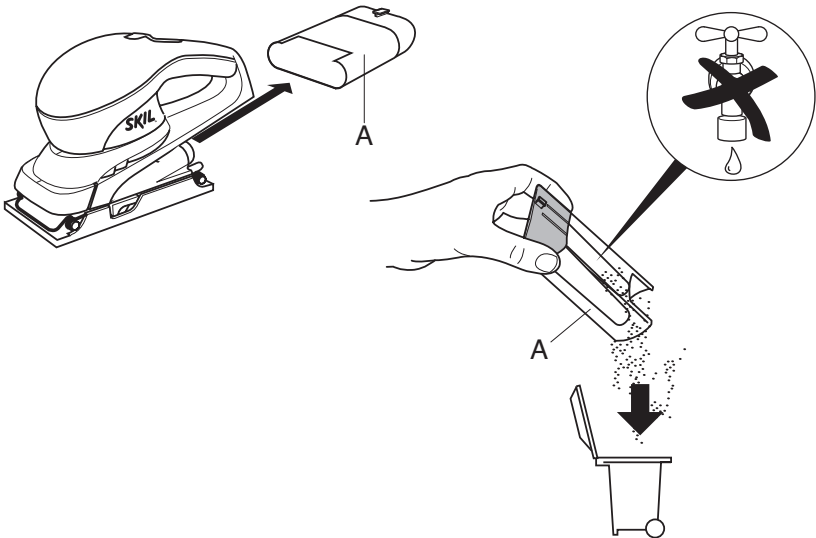
3

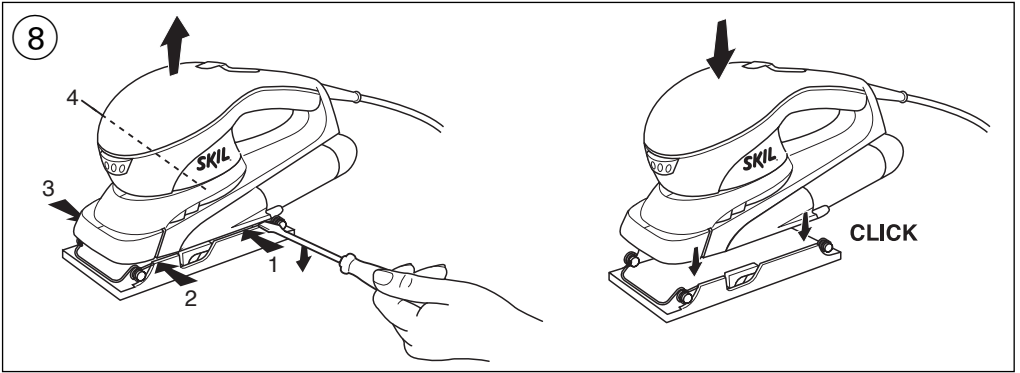
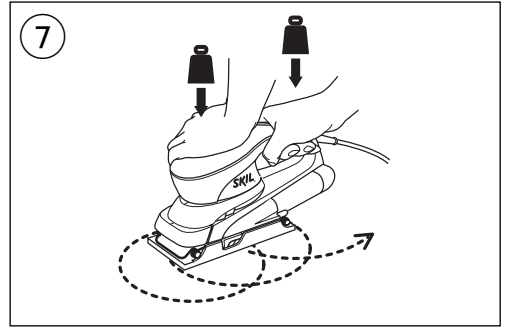
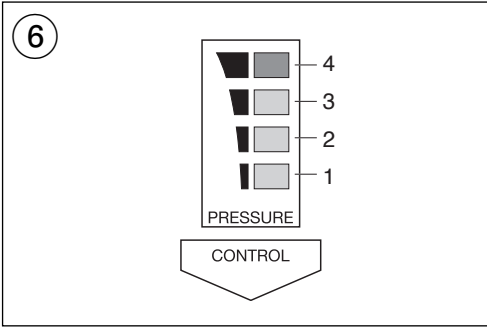


4



5





## ACCESSORIES

<p><b>NORMAL</b></p> <p>SKIL Nr.</p>	<p><b>60</b> coarse, gros grob, grof</p> <p><b>10X</b></p> <p>(2610)384695</p>	<p><b>120</b> medium, moyen mittel, middel</p> <p><b>10X</b></p> <p>(2610)384697</p>	<p><b>180</b> fine, fin, fein, fijn</p> <p><b>10X</b></p> <p>2610390723</p>
<p>SKIL Nr.</p>	<p><b>60</b> coarse, gros grob, grof</p> <p><b>6X</b></p> <p>2610390724</p>	<p><b>120</b> medium, moyen mittel, middel</p> <p><b>6X</b></p> <p>2610390725</p>	<p><b>180</b> fine, fin, fein, fijn</p> <p><b>6X</b></p> <p>2610390726</p>

## Orbital sander 7350/7360/7365

### INTRODUCTION

- This tool is intended for dry sanding and finishing of wood, painted surfaces, plastic and filler
- Read and save this instruction manual

### TECHNICAL SPECIFICATIONS ①

### SAFETY

#### GENERAL SAFETY INSTRUCTIONS

**WARNING! Read all instructions.** Failure to follow all instructions listed below may result in electric shock, fire and/or serious injury. The term "power tool" in all of the warnings listed below refers to your mains operated (corded) power tool.

#### 1) WORK AREA

- Keep work area clean and well lit.** Cluttered and dark areas invite accidents.
- Do not operate power tools in explosive atmospheres, such as in the presence of flammable liquids, gases or dust.** Power tools create sparks which may ignite the dust or fumes.
- Keep children and bystanders away while operating a power tool.** Distractions can cause you to lose control.

#### 2) ELECTRICAL SAFETY

- Power tool plugs must match the outlet. Never modify the plug in any way. Do not use any adapter plugs with earthed (grounded) power tools.** Unmodified plugs and matching outlets will reduce risk of electric shock.
- Avoid body contact with earthed or grounded surfaces such as pipes, radiators, ranges and refrigerators.** There is an increased risk of electric shock if your body is earthed or grounded.
- Do not expose power tools to rain or wet conditions.** Water entering a power tool will increase the risk of electric shock.
- Do not abuse the cord. Never use the cord for carrying, pulling or unplugging the power tool. Keep cord away from heat, oil, sharp edges or moving parts.** Damaged or entangled cords increase the risk of electric shock.
- When operating a power tool outdoors, use an extension cord suitable for outdoor use.** Use of a cord suitable for outdoor use reduces the risk of electric shock.

#### 3) PERSONAL SAFETY

- Stay alert, watch what you are doing and use common sense when operating a power tool. Do not use a power tool while you are tired or under the influence of drugs, alcohol or medication.** A moment of inattention while operating power tools may result in serious personal injury.

- Use safety equipment. Always wear eye protection.** Safety equipment such as dust mask, non-skid safety shoes, hard hat, or hearing protection used for appropriate conditions will reduce personal injuries.
  - Avoid accidental starting. Ensure the switch is in the off position before plugging in.** Carrying power tools with your finger on the switch or plugging in power tools that have the switch on invites accidents.
  - Remove any adjusting key or wrench before turning the power tool on.** A wrench or a key left attached to a rotating part of the power tool may result in personal injury.
  - Do not overreach. Keep proper footing and balance at all times.** This enables better control of the power tool in unexpected situations.
  - Dress properly. Do not wear loose clothing or jewellery. Keep your hair, clothing and gloves away from moving parts.** Loose clothes, jewellery or long hair can be caught in moving parts.
  - If devices are provided for the connection of dust extraction and collection facilities, ensure these are connected and properly used.** Use of these devices can reduce dust related hazards.
- #### 4) POWER TOOL USE AND CARE
- Do not force the power tool. Use the correct power tool for your application.** The correct power tool will do the job better and safer at the rate for which it was designed.
  - Do not use the power tool if the switch does not turn it on and off.** Any power tool that cannot be controlled with the switch is dangerous and must be repaired.
  - Disconnect the plug from the power source before making any adjustments, changing accessories, or storing power tools.** Such preventive safety measures reduce the risk of starting the power tool accidentally.
  - Store idle power tools out of the reach of children and do not allow persons unfamiliar with the power tool or these instructions to operate the power tool.** Power tools are dangerous in the hands of untrained users.
  - Maintain power tools. Check for misalignment or binding of moving parts, breakage of parts and any other condition that may affect the power tools operation. If damaged, have the power tool repaired before use.** Many accidents are caused by poorly maintained power tools.
  - Keep cutting tools sharp and clean.** Properly maintained cutting tools with sharp cutting edges are less likely to bind and are easier to control.
  - Use the power tool, accessories and tool bits etc., in accordance with these instructions and in the manner intended for the particular type of power tool, taking into account the working conditions and the work to be performed.** Use of the power tool for operations different from those intended could result in a hazardous situation.
- #### 5) SERVICE
- Have your power tool serviced by a qualified repair person using only identical replacement parts.** This will ensure that the safety of the power tool is maintained.

## SAFETY INSTRUCTIONS FOR SANDERS

- Avoid damage that can be caused by screws, nails and other elements in your workpiece; remove them before you start working
- Always keep the cord away from moving parts of the tool; direct the cord to the rear away from the tool
- When you put away the tool, switch off the motor and ensure that all moving parts have come to a complete standstill
- Use completely unrolled and safe extension cords with a capacity of 16 Amps (U.K. 13 Amps)
- In case of electrical or mechanical malfunction, immediately switch off the tool and disconnect the plug
- SKIL can assure flawless functioning of the tool only when original accessories are used
- This tool should not be used by people under the age of 16 years
- The noise level when working can exceed 85 dB(A); wear ear protection
- If the cord is damaged or cut through while working, do not touch the cord, but immediately disconnect the plug
- Never use tool when cord is damaged; have it replaced by a qualified person
- Always check that the supply voltage is the same as the voltage indicated on the nameplate of the tool (tools with a rating of 230V or 240V can also be connected to a 220V supply)
- This tool is not suitable for wet sanding
- **Do not work materials containing asbestos** (asbestos is considered carcinogenic)
- When sanding metal, sparks are generated; do not use dustbox and keep other persons and combustible material from work area
- Do not touch the moving sanding sheet
- Do not continue to use worn, torn or heavily clogged sanding sheets
- Wear protective gloves, safety glasses, close-fitting clothes and hair protection (for long hair)
- **Take protective measures when during work dust can develop that is harmful to one's health, combustible or explosive** (some dusts are considered carcinogenic); wear a dust mask and work with dust/chip extraction when connectable
- **Always disconnect plug from power source before making any adjustment or changing any accessory**

### WHEN CONNECTING NEW 3-PIN PLUG (U.K. ONLY):

- Do not connect the blue (= neutral) or brown (= live) wire in the cord of this tool to the earth terminal of the plug
- If for any reason the old plug is cut off the cord of this tool, it must be disposed of safely and not left unattended

## TOOL ELEMENTS ②

- A Dust box
- B Pressure control (7365)
- C On/off switch
- D Sanding speed selection wheel (7360)

## USE

- Mounting of sanding sheet  
**7350/7360/7365** ③  
**7360/7365** ④
  - ! **disconnect the plug**
  - ! **the dust suction requires the use of perforated sanding sheets**
  - ! **perforation in sanding sheet should correspond with perforation in sanding foot** ③
  - ! **replace worn sanding sheets in time**
  - ! **always use the tool with the total sanding surface covered with sanding paper**
- Dust suction ⑤
  - empty dustbox A regularly for optimal dust pick-up performance
  - ! **do not use dustbox when sanding metal**
- Pressure control (7365) ⑥
  - Warns the user when applying too much pressure on the tool while working (too much pressure reduces the sanding performance)
  - green light 1 turns on when running tool is placed on workpiece
  - green light 2 turns on in case of pressure
  - green light 3 turns on in case of increased pressure
  - red light 4 turns on when pressure is too high
- On/off switch
  - switch on/off the tool by pushing switch C ② forward/backwards
  - ! **before the sanding surface reaches the workpiece, you should switch on the tool**
  - ! **before switching off the tool, you should lift it from the workpiece**
- VariTronic speed control (7360)
  - For optimal sanding results on different materials
  - with wheel D ② you can set the desired sanding speed
  - adjust speed to grit size used
  - before starting a job, find the optimal speed and grit by testing out on spare material
- Holding and guiding the tool ⑦
  - guide the tool parallel to the working surface
  - ! **do not apply too much pressure on the tool; let the sanding surface do the work for you**
  - do not tilt the tool in order to avoid unwanted sanding marks
  - keep the ventilation slots uncovered

## APPLICATION ADVICE

- Move the tool in straight movements in line with the grain
  - for sanding bare wood surfaces
  - for extra fine finishing
- Never use the same sanding sheet for wood and metal
- When cord needs to be replaced, first remove foot-plate as illustrated ⑧

- Recommended sanding sheet grits:  
coarse - for removing paint;  
for sanding of extremely rough wood  
medium - for sanding of rough or plain wood  
fine - for smoothing of wood;  
for finishing of bare wood;  
for smoothing surfaces with old paint
- Use different grit sizes when the working surface is rough:
  - start sanding with coarse or medium grit
  - finish with fine grit
- For more tips see [www.skileurope.com](http://www.skileurope.com)

## GUARANTEE / ENVIRONMENT

- Always keep tool and cord clean (especially the ventilation slots)
  - remove adhering sanding dust with a brush
  - ! **disconnect the plug before cleaning**
- This SKIL product is guaranteed in accordance with statutory/country-specific regulations; damage due to normal wear and tear, overload or improper handling will be excluded from the guarantee
- In case of a complaint, send the tool **undismantled** together with proof of purchase to your dealer or the nearest SKIL service station (addresses as well as the service diagram of the tool are listed on [www.skileurope.com](http://www.skileurope.com))
- **Do not dispose of electric tools, accessories and packaging together with household waste material** (only for EU countries)
  - in observance of European Directive 2002/96/EC on waste of electric and electronic equipment and its implementation in accordance with national law, electric tools that have reached the end of their life must be collected separately and returned to an environmentally compatible recycling facility
  - symbol ⑨ will remind you of this when the need for disposing occurs

F

**Ponceuse vibrante 7350/7360/7365**

## INTRODUCTION

- Cet outil sert au ponçage et au polissage à sec du bois, des surfaces peintes, du plastique et du mastic
- Lisez et conservez ce manuel d'instruction

## SPECIFICATIONS TECHNIQUES ①

### SECURITE

#### INSTRUCTIONS GENERALES DE SECURITE

**ATTENTION! Lisez toutes les instructions.** Le non-respect des instructions indiquées ci-après peut entraîner un choc électrique, un incendie et/ou de graves blessures sur les personnes. La notion d'«outil électroportatif» mentionnée par la suite se rapporte à des outils électriques raccordés au secteur (avec câble de raccordement).

#### 1) PLACE DE TRAVAIL

- Maintenez l'endroit de travail propre et bien éclairé.**  
Un lieu de travail en désordre ou mal éclairé augmente le risque d'accidents.
- N'utilisez pas l'appareil dans un environnement présentant des risques d'explosion et où se trouvent des liquides, des gaz ou poussières inflammables.** Les outils électroportatifs génèrent des étincelles risquant d'enflammer les poussières ou les vapeurs.
- Tenez les enfants et autres personnes éloignés durant l'utilisation de l'outil électroportatif.**  
En cas d'inattention vous risquez de perdre le contrôle sur l'appareil.

#### 2) SECURITE RELATIVE AU SYSTEME ELECTRIQUE

- La fiche de secteur de l'outil électroportatif doit être appropriée à la prise de courant. Ne modifiez en aucun cas la fiche. N'utilisez pas de fiches d'adaptateur avec des appareils avec mise à la terre.**  
Les fiches non modifiées et les prises de courant appropriées réduisent le risque de choc électrique.
- Evitez le contact physique avec des surfaces mises à la terre tels que tuyaux, radiateurs, fours et réfrigérateurs.** Il y a un risque élevé de choc électrique au cas où votre corps serait relié à la terre.
- N'exposez pas l'outil électroportatif à la pluie ou à l'humidité.** La pénétration d'eau dans un outil électroportatif augmente le risque d'un choc électrique.
- N'utilisez pas le câble à d'autres fins que celles prévues, n'utilisez pas le câble pour porter l'appareil ou pour l'accrocher ou encore pour le débrancher de la prise de courant. Maintenez le câble éloigné des sources de chaleur, des parties grasses, des bords tranchants ou des parties de l'appareil en rotation.** Un câble endommagé ou torsadé augmente le risque d'un choc électrique.
- Au cas où vous utiliseriez l'outil électroportatif à l'extérieur, utilisez une rallonge autorisée homologuée pour les applications extérieures.**  
L'utilisation d'une rallonge électrique homologuée pour les applications extérieures réduit le risque d'un choc électrique.

#### 3) SECURITE DES PERSONNES

- Restez vigilant, surveillez ce que vous faites. Faites preuve de bon en utilisant l'outil électroportatif. N'utilisez pas l'appareil lorsque vous êtes fatigué ou après avoir consommé de l'alcool, des drogues ou avoir pris des médicaments.** Un moment d'inattention lors de l'utilisation de l'appareil peut entraîner de graves blessures sur les personnes.
- Portez des équipements de protection. Portez toujours des lunettes de protection.** Le fait de porter des équipements de protection personnels tels que masque anti-poussières, chaussures de sécurité antidérapantes, casque de protection ou protection acoustique suivant le travail à effectuer, réduit le risque de blessures.



A series of horizontal lines for writing, consisting of 20 parallel lines spaced evenly down the page.





GB	<p><b>CE DECLARATION OF CONFORMITY</b> We declare under our sole responsibility that this product is in conformity with the following standards or standardized documents: EN 60 745, EN 55 014, in accordance with the provisions of the directives 73/23/EC, 89/336/EC, 98/37/EC.</p> <p><b>NOISE/VIBRATION</b> Measured in accordance with EN 60 745 the sound pressure level of this tool is 85 dB(A) and the sound power level 96 dB(A) (standard deviation: 3 dB), and the vibration 4,6 m/s<sup>2</sup> (hand-arm method).</p>
F	<p><b>CE DÉCLARATION DE CONFORMITÉ</b> Nous déclarons sous notre propre responsabilité que ce produit est en conformité avec les normes ou documents normalisés suivants: EN 60 745, EN 55 014, conforme aux réglementations 73/23/EC, 89/336/EC, 98/37/EC.</p> <p><b>BRUIT/VIBRATION</b> Mesuré selon EN 60 745 le niveau de la pression sonore de cet outil est 85 dB(A) et le niveau de la puissance sonore 96 dB(A) (déviations standard: 3 dB), et la vibration 4,6 m/s<sup>2</sup> (méthode main-bras).</p>
D	<p><b>CE KONFORMITÄTSEKTLÄRUNG</b> Wir erklären in alleiniger Verantwortung, daß dieses Produkt mit den folgenden Normen oder normativen Dokumenten übereinstimmt: EN 60 745, EN 55 014, gemäß den Bestimmungen der Richtlinien 73/23/EG, 89/336/EG, 98/37/EG.</p> <p><b>GERÄUSCH/VIBRATION</b> Gemessen gemäß EN 60 745 beträgt der Schalldruckpegel dieses Gerätes 85 dB(A) und der Schalleistungspegel 96 dB(A) (Standard- abweichung: 3 dB), und die Vibration 4,6 m/s<sup>2</sup> (Hand-Arm Methode).</p>
NL	<p><b>CE CONFORMITEITSVERKLARING</b> Wij verklaren, dat dit product voldoet aan de volgende normen of normatieve documenten: EN 60 745, EN 55 014, overeenkomstig de bepalingen van de richtlijnen 73/23/EG, 89/336/EG, 98/37/EG.</p> <p><b>GELUID/VIBRATIE</b> Gemeten volgens EN 60 745 bedraagt het geluidsdrukniveau van deze machine 85 dB(A) en het geluidsvormeniveau 96 dB(A) (standaard deviatie: 3 dB), en de vibratie 4,6 m/s<sup>2</sup> (hand-arm methode).</p>
S	<p><b>CE KONFORMITETS FÖRKLARING</b> Vi intygar och ansvarar för, att denna produkt överensstämmer med följande norm och dokument: EN 60 745, EN 55 014, enl. bestämmelser och riktlinjerna 73/23/EG, 89/336/EG, 98/37/EG.</p> <p><b>LJUD/VIBRATION</b> Ljudtrycksnivån som uppmätts enligt EN 60 745 är på denna maskin 85 dB(A) och ljudeffektnivån 96 dB(A) (standard deviation: 3 dB), och vibration 4,6 m/s<sup>2</sup> (hand-arm metod).</p>
DK	<p><b>CE KONFORMITETSEKTLÆRING</b> Vi erklærer under almindeligt ansvar, at dette produkt er i overensstemmelse med følgende normer eller normative dokumenter: EN 60 745, EN 55 014, i henhold til bestemmelserne i direktiverne 73/23/EF, 89/336/EF, 98/37/EF.</p> <p><b>STØJ/VIBRATION</b> Måles efter EN 60 745 er lydtrykniveau af dette værktøj 85 dB(A) og lydeffektniveau 96 dB(A) (standard deviation: 3 dB), og vibrationsniveauet 4,6 m/s<sup>2</sup> (hånd-arm metoden).</p>
N	<p><b>CE SAMSVARERKLÆRING</b> Vi erklærer at det er under vårt ansvar at dette produkt er i samsvar med følgende standarder eller standard-dokumenter: EN 60 745, EN 55 014, i samsvar med reguleringer 73/23/EF, 89/336/EF, 98/37/EF.</p> <p><b>STØY/VIBRASJON</b> Målt ifølge EN 60 745 er lydtryknivået av dette verktøyet 85 dB(A) og lydstyrkenivået 96 dB(A) (standard deviasjon: 3 dB), og vibrasjonsnivået 4,6 m/s<sup>2</sup> (hånd-arm metode).</p>
FIN	<p><b>CE TODISTUS STANDARDINMUKAISUDESTA</b> Todistamme täten ja vastaamme yksin siitä, että nämä tuote en alluuleteltujen standardien ja standardoimisasiakirjojen vaatimusten mukainen EN 60 745, EN 55 014, seuraavien sääntöjen mukaisesti 73/23/ETY, 89/336/ETY, 98/37/ETY.</p> <p><b>MELU/TÄRINÄ</b> Mitattuna EN 60 745 mukaan työkalun melutaso on 85 dB(A) ja yleensä työkalun äänen voimakkuus on 96 dB(A) (keskihajonta: 3 dB), ja värinän voimakkuus 4,6 m/s<sup>2</sup> (käsi-käsivarsi metodi).</p>
E	<p><b>CE DECLARACION DE CONFORMIDAD</b> Declaramos bajo nuestra sola responsabilidad que este producto está en conformidad con las normas o documentos normalizados siguientes: EN 60 745, EN 55 014, de acuerdo con las regulaciones 73/23/CE, 89/336/CE, 98/37/CE.</p> <p><b>RUIDOS/VIBRACIONES</b> Medido según EN 60 745 el nivel de la presión acústica de esta herramienta se eleva a 85 dB(A) y el nivel de la potencia acústica 96 dB(A) (desviación estándar: 3 dB), y la vibración a 4,6 m/s<sup>2</sup> (método brazo-mano).</p>
P	<p><b>CE DECLARAÇÃO DE CONFIRMIDADE</b> Declaramos sob nossa exclusiva responsabilidade que este produto cumpre as seguintes normas ou documentos normativos: EN 60 745, EN 55 014, conforme as disposições das diretivas 73/23/CE, 89/336/CE, 98/37/CE.</p> <p><b>RUIDO/VIBRAÇÕES</b> Medido segundo EN 60 745 o nível de pressão acústica desta ferramenta é 85 dB(A) e o nível de potência acústica 96 dB(A) (espaço de erro: 3 dB), e a vibração 4,6 m/s<sup>2</sup> (método braço-mão).</p>
I	<p><b>CE DICHIARAZIONE DI CONFORMITÀ</b> Dichiaramo, assumendo la piena responsabilità di tale dichiarazione, che il prodotto è conforme alle seguenti normative e ai relativi documenti: EN 60 745, EN 55 014 in base alle prescrizioni delle direttive CE 73/23, CE 89/336, CE 98/37.</p> <p><b>RUMOROSITÀ/VIBRAZIONE</b> Misurato in conformità al EN 60 745 il livello di pressione acustica di questo utensile è 85 dB(A) ed il livello di potenza acustica 96 dB(A) (deviazione standard: 3 dB), e la vibrazione 4,6 m/s<sup>2</sup> (metodo mano-braccio).</p>
H	<p><b>CE MINŐSÉGI TANUSÍTVÁNY</b> Teljes felelősségünk tudatában kijelentjük, hogy jelen termék a következő szabványoknak vagy kötelező hatósági előírásoknak megfelel: EN 60 745, EN 55 014, a 73/23/EK, 89/336/EK, 98/37/EK előírásoknak megfelelően.</p> <p><b>ZAJ/REZGÉS</b> Az EN 60 745 alapján végzett mérések szerint ezen készülék hangnyomás szintje 85 dB(A) a hangteljesítmény szintje 96 dB(A) (normál eltérés: 3 dB), a kézre ható rezgésszám 4,6 m/s<sup>2</sup>.</p>
CZ	<p><b>CE STRVŽUJÍCÍ PROHLÁŠENÍ</b> Potvrzujeme na odpovědnost, že tento výrobek odpovídá následujícím normám nebo normativním podkladům: EN 60 745, EN 55 014, podle ustanovení směrníc 73/23/EG, 89/336/EG, 98/37/EG.</p> <p><b>HLUČNOST/VIBRACÍ</b> Měřeno podle EN 60 745 činí tlak hlukové vlny tohoto přístroje 85 dB(A) a dávka hlučnosti 96 dB(A) (standardní odchylka: 3 dB), a vibrací 4,6 m/s<sup>2</sup> (metoda ruka-paže).</p>
TR	<p><b>CE STANDARDIZASYON BEYANI</b> Yeğane sorumluluğumuzla, bu ürünün aşağıdaki standartlara veya standart belgelerine uygun olduğunu beyan ederiz: EN 60 745, EN 55 014, yönetmeliği hükümleri uyarınca 73/23/EC, 89/336/EC, 98/37/EC.</p> <p><b>GÜRÜLTÜ/TİTREŞİM</b> Ölçülen EN 60 745 göre ses basıncı bu makinenin seviyesi 85 dB(A) ve çalışma sırasındaki gürültü 96 dB(A) (standart sapma: 3 dB), ve titreşim 4,6 m/s<sup>2</sup> (el-kol metodu).</p>

PL	<b>OŚWIADCZENIE ZGODNOŚCI CE</b> Niniejszym oświadczamy ponosząc osobistą odpowiedzialność, że produkt wykonany jest zgodnie z następującymi normami i dokumentami normalizującymi: EN 60 745, EN 55 014, z godnie z wytycznymi 73/23/WE, 89/336/WE, 98/37/WE. <b>HALASU/WIBRACJE</b> Pomiarów dokonano zgodnie z normą EN 60 745 ciśnienie akustyczne narzędzia wynosi 85 dB(A) zaś poziom mocy akustycznej 96 dB(A) (poziom odchylenie: 3 dB), zaś vibracje 4,6 m/s <sup>2</sup> (metoda dłoń-ręka).
RU	<b>ЗАЯВЛЕНИЕ О СООТВЕТСТВИИ</b> Мы с полной ответственностью заявляем, что это изделие соответствует следующим стандартам или стандартизованным документам: EN 60 745, EN 55 014, в соответствии с инструкциями 73/23/ЕС, 89/336/ЕС, 98/37/ЕС. <b>ШУМНОСТИ/ВИБРАЦИИ</b> При измерении в соответствии со стандартом EN 60 745 уровень звукового давления для этого инструмента составляет 85 дБ (А) и уровень звуковой мощности - 96 дБ (А) (стандартное отклонение: 3 дБ), и вибрации - 4,6 м/с <sup>2</sup> (по методу для рук).
UA	<b>СЕ ВІДПОВІДНІСТЬ</b> Ми заявляємо, що відповідність даного продукту наступним стандартам і регулюючим документам повністю нашою відповідальністю: EN 60 745, EN 55 014, відповідно до положень директив 73/23/ЄС, 89/336/ЄС, 98/37/ЄС. <b>ШУМ/ВІБРАЦІЯ</b> Зміряний відповідно до EN 60 745 рівень тиску звуку даного інструменту 85 дБ(А) і потужність звуку 96 дБ(А) (стандартне відхилення: 3 дБ), і вібрація 4,6 м/с <sup>2</sup> (ручна методика).
GR	<b>СΕ ΔΗΛΩΣΗ ΣΥΜΒΑΤΟΤΗΤΑΣ</b> Δηλούμε υπευθύνως ότι το προϊόν αυτό είναι κατασκευασμένο σύμφωνα με τους εξής κανονισμούς ή κατασκευαστικές συστάσεις: EN 60 745, EN 55 014, κατά τις διατάξεις των κανονισμών της Κοινής Αγοράς 73/23/ΕΚ, 89/336/ΕΚ, 98/37/ΕΚ. <b>ΦΟΡΥΒΟ/ΚΡΑΔΑΣΜΟΥΣ</b> Μετρημένη σύμφωνα με EN 60 745 η στάθμη ακουστικής πίεσης αυτού του εργαλείου ανέρχεται σε 85 dB(A) και η στάθμη ηχητικής ισχύος σε 96 dB(A) (κοινή απόκλιση: 3 dB), και ο κραδασμός σε 4,6 m/s <sup>2</sup> (μεθοδος χειρός/βραχίονα).
RO	<b>DECLARAȚIE DE CONFORMITATE CE</b> Declaram în proprie răspundere că acest produs este conform cu următoarele standarde sau documente standardizate: EN 60 745, EN 55 014, în conformitate cu regulile 73/23/EC, 89/336/EC, 98/37/EC. <b>ZGOMOT/VIBRAȚII</b> Măsurat în conformitate cu EN 60 745 nivelul de presiune a sunetului generat de acest instrument este de 85 dB(A) iar nivelul de putere a sunetului 96 dB(A) (abaterea standard: 3 dB), iar nivelul vibrațiilor 4,6 m/s <sup>2</sup> (metoda mină - braț).
BG	<b>СЕ ДЕКЛАРАЦИЯ ЗА СЪОТВЕТСТВИЕ</b> Декларираме на изцяло наша отговорност, че това изделие е съобразено със следните стандарти или стандартизирани документи: EN 60 745, EN 55 014, в съответствие с нормативната уредба на 73/23/EG, 89/336/EG, 98/37/EG. <b>ШУМ/ВИБРАЦИИ</b> Измерено в съответствие с EN 60 745 нивото на звукова налягане на този инструмент е 85 dB(A) а нивото на звукова мощност е 96 dB(A) (стандартно отклонение: 3 dB), а вибрациите са 4,6 m/s <sup>2</sup> (метод ръка-рамо).
SK	<b>СЕ PREHLÁSENIE O ZHODE</b> Výhradne na našu vlastnú zodpovednosť prehlasujeme, že tento výrobok zodpovedá nasledujúcim normám alebo normovaným dokumentom: EN 60 745, EN 55 014, v súlade s predpismi 73/23/EC, 89/336/EC, 98/37/EC. <b>HLUKU/VIBRÁCIACH</b> Merané podľa EN 60 745 je úroveň akustického tlaku tohto nástroja 85 dB(A) a úroveň akustického výkonu je 96 dB(A) (štandardná odchýlka: 3 dB), a vibrácie sú 4,6 m/s <sup>2</sup> (metóda ruka - paža).
HR	<b>СЕ ИЗЈАВА О УСКЛАЂЕНОСТИ</b> Izjavljujemo uz punu odgovornost da je ovaj proizvod usklađen sa slijedećim normama i normativnim dokumentima: EN 60 745, EN 55 014, prema odredbama smjernica 73/23/EG, 89/336/EG, 98/37/EG. <b>BUKVI/VIBRACIJAMA</b> Mjerenje prema EN 60 745, prag zvučnog tlaka ovog električnog alata iznosi 85 dB(A) a jakost zvuka 96 dB(A) (standardna devijacija: 3 dB), a vibracija 4,6 m/s <sup>2</sup> (postupkom na šaci-ruci).
SCG	<b>СЕ ИЗЈАВА О УСКЛАЂЕНОСТИ</b> Pod punom odgovornošću izjavljujemo da je ovaj proizvod usklađen sa sledećim standardima ili standardizovanim dokumentima: EN 60 745, EN 55 014, u skladu sa odredbama smernica 73/23/EG, 89/336/EG, 98/37/EG. <b>BUKA/VIBRACIJE</b> Mereno u skladu sa EN 60 745, nivo pritiska zvuka ovog alata iznosi 85 dB(A), a jačina zvuka 96 dB(A) (normalno odstupanje: 3 dB), a vibracija 4,6 m/s <sup>2</sup> (mereno metodom na šaci-ruci).
SLO	<b>IZJAVA O USTREZNOSTI CE</b> Odgovorno izjavljamo, da je ta izdelek v skladu z naslednjimi standardi ali standardnimi dokumenti: EN 60 745, EN 55 014, v skladu s predpisi navodil 73/23/EG, 89/336/EG, 98/37/EG. <b>HRUP/VIBRACIJA</b> Izmerjeno v skladu s predpisom EN 60 745 je raven zvočnega pritiska za to orodje 85 dB(A) in jakosti zvoka 96 dB(A) (standarden odmik: 3 dB), in vibracija 4,6 m/s <sup>2</sup> (metoda 'dlan-roka').
EST	<b>СЕ VASTAVUSDEKLARATSIOON</b> Kinnitame ainuvastutajana, et see toode vastab järgmistele standarditele või normdokumentidele: EN 60 745, EN 55 014 vastavalt direktiivide 73/23/EÜ, 89/336/EÜ, 98/37/EÜ nõuetele. <b>MÜRA/VIBRATSIOON</b> Vastavalt kooskõlas normiga EN 60 745 läbi viidud mõõtmistele on antud seadme heliõhk 85 dB(A) ja helitugevus 96 dB(A) (standardkõrvalekalle: 3 dB), ja vibratsioon 4,6 m/s <sup>2</sup> (kää-randme-meetod).
LV	<b>СЕ ДЕКЛАРАЦИЈА ПАР АТБИЛСТІБУ СТАНДАРТИЕМ</b> Mēs ar pilnu atbildību paziņojam, ka šis izstrādājums atbilst standartiem vai standartizācijas dokumentiem EN 60 745, EN 55 014 un ir saskaņā ar direktīvām 73/23/EG, 89/336/EG, 98/37/EG. <b>TROKSNIS/VIBRĀCIJA</b> Saskaņā ar standartu EN 60 745 noteiktās instrumenta radītā trokšņa skaņas spiediena līmenis ir 85 dB(A) un skaņas jaudas līmenis ir 96 dB (A) (pie tipiskās izkliedes: 3 dB), un vibrācijas intensitāte ir 4,6 m/s <sup>2</sup> (strādājot rokas režīmā).
LT	<b>СЕ КОКЫБЕС АТТИКТИЕС ДЕКЛАРАЦИЈА</b> Mes atsakingai pareiškiame, kad šis gaminyš atitinka tokius standartus ir normatyvinius dokumentus: EN 60 745, EN 55 014 pagal EEB reglamentų 73/23/EG, 89/336/EG, 98/37/EG nuostatas. <b>TRIUKŠMINGUMAS/VIBRACIJA</b> Šio prietaiso triukšmingumas buvo išmatuotas pagal EN 60 745 reikalavimus keliamo triukšmo garso slėgio lygis siekia 85 dB(A) ir akustinio galingumo lygis 96 dB(A) (standartinis nuokrypis: 3 dB), ir vibracijos pagreitis rankos plaštakos srityje tipiniu atveju yra mažesnis, kaip 4,6 m/s <sup>2</sup> .

