

This quick start guide provides instructions for setting up a basic system with Imaging Studio. For additional information, download the user's manual from the Redlake FTP site at <ftp://ftp.redlake.com/motion/>.

Equipment Required for Setup

- PC running Windows 2000 or XP with Service Pack 1 or higher.
- PCMCIA card with power supply (see user's manual for additional power options and information)
- One of the following camera(s): *MotionXtra* HG-SE, *MotionScope* M3 or registered *MotionScope* M1/M2
- CD with application software
- 6-pin Firewire 1394 Interface cable

System Requirements

- Pentium III 1.8 GHz with MMX
- DRAM 512 MB or higher
- Graphic memory 64 MB or higher
- Display 1280 x 768 pixel resolution or higher
- HDD capacity 40 GB or higher
- CD or DVD-ROM
- 6-pin IEEE 1394a interface, PCMCIA with power supply or PCI type with Texas Instruments chip set.

Note: Administrator Privileges on the PC are required before installing the software!

Install the Software

Install the software before connecting the camera to the PC. If you are installing software to control multiple cameras and/or previously installed cameras, please refer to the user's manual.

1. Insert the CD into CD-ROM drive of the computer.
2. Select the CD drive and double click on the Redlake Imaging Studio Installer.msi file. The program will start automatically and guide you through the installation.
3. If required, register the camera by double clicking on the Redlake Imaging Studio Register Key.exe on the CD and install it to the PC.

Set up the Hardware

Make sure the software is installed on the PC before connecting the camera to the computer.

1. Switch the camera power to the ON position.
2. When the **Power** and **Ready/Data** LEDs light up, connect the Firewire cable to the Firewire port on the camera. Connect the other end of the Firewire cable to the PC.
3. The Windows Found New Hardware Wizard will display after the camera is connected to the PC. Select the option to **Install the software automatically** and click on the **Next** button.
4. From the Windows Hardware Installation screen, select the **Continue Anyway** button and follow the on-screen instructions to complete the installation.

Set up the Camera

1. From the main toolbar, select the **Camera Setup** icon, or double click on the camera name in the right-hand toolbar window.
2. Select the **Vertical Resolution** using the **Lines** drop down menu and the **Horizontal Resolution** using the **Pixel/Line** drop down menu. Select the **Speed** using the **Frames/sec.** drop down menu. Select the **Exposure** using the **Shutter Time** text box.
3. Select the Pre-trigger time by typing the desired percentage into the **Pre-Trig % of Buffer** text box from the Camera Setup window. The **Pre-Trig Time [s.]** text box displays the resulting pre-trigger time.
4. The default setting for the **Sequence Length** is the total available recording time in seconds. To change the sequence length, type the desired number of seconds into the **Sequence Length[s.]** text box.
5. If using an external trigger, the default setting is a falling edge or switch closure. If a rising edge or open switch is desired, check the **Trigger** box on the Camera Setup window.
6. The default setting for the data transfer speed from the camera to the computer is approximately 250 to 300 Mbit/s. To increase the data transfer speed to the full 400 Mbit/s, check the **High Transfer Speed** box on the Camera Setup window.
7. Click on the Options button to access additional power, battery and trigger options.

View a Live Image

1. Click on the **Preview Normal** button or click on the **Preview Correct Exposure** button.
2. Adjust the exposure while in Preview mode by using the **Exposure** slider at the top of the toolbar.

To Record Images Without Pre-trigger Frames

1. Click on the green **Set Ready for Record** button. The **Ready/Data** LED on the camera will light up green.
2. Click on the red **Trigger** button or press the manual control trigger button. The red **Ready/Data** LED will blink red while recording images. It will light up solid red when the buffer is full.

To Record Images with Pre-trigger Frames

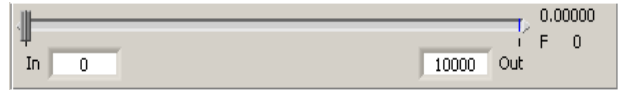
1. Click on the green **Set Ready for Record** button. The **Ready/Data** LED on the camera will light up green.
2. Click on the white **Set for Pre-trigger Mode** button. The **Ready/Data** LED will blink red and green.
3. Click on the red **Trigger** button. The red **Ready/Data** LED will blink red while recording images. It will light up solid red when the buffer is full.

Note: The camera will not display a live image while it is in record mode.

Imaging Studio

View Recorded Images

1. Click on the **Playback** button.
2. Click on the **Stop** button and the **Play Forward** button to replay the sequence.

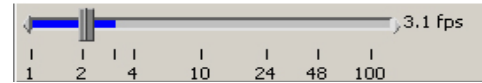


Shutter time slider

Quick Reference

Camera Set up and Operation

Open camera and change settings		Save settings to the camera	
Preview normal with the correct exposure		Preview in low light mode	
Enable camera record		Arm for pre-trigger mode	
Trigger		Sleep mode	



Playback speed slider

View and Playback

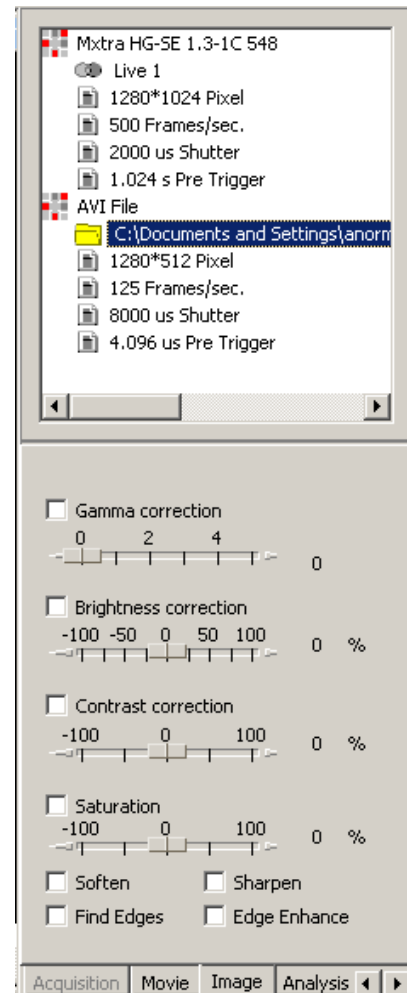
Go to last frame		Go to first frame	
Step forward one frame		Step back one frame	
Play forward		Playback	
Go to beginning of the sequence		Go to the end of the sequence	
Stop		Go to frame 0	
Adjust camera color and contrast		Change output size	
Flip		Rotate	
Zoom			

Cut and Modify a Sequence

Select 1st frame of sequence		Select last frame of sequence	
		Mark frame 0	

Store a Sequence

Save stored frames in RAW format		Auto-download in RAW format	
Download as a movie file		Download as a single image	



For additional information, download the user's manual from the Redlake FTP site at <ftp://ftp.redlake.com/motion/>.

The right-hand window provides camera and movie lists as well as access to advanced function tabs.