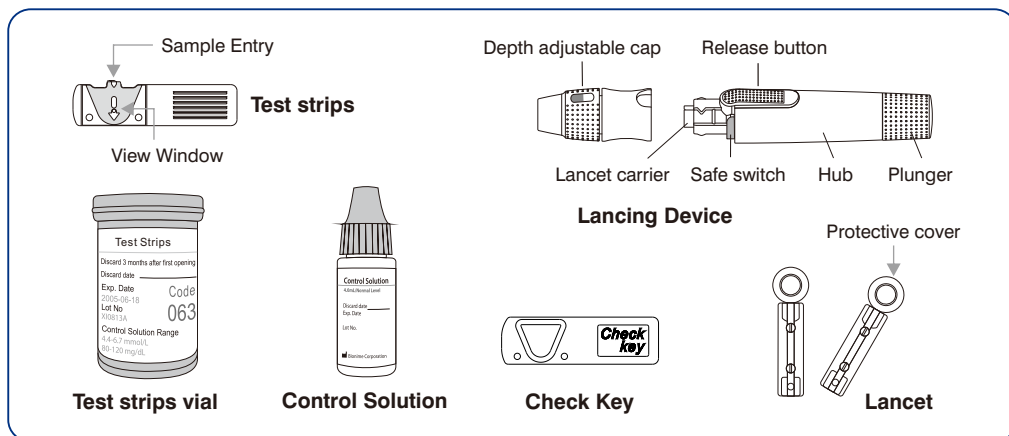
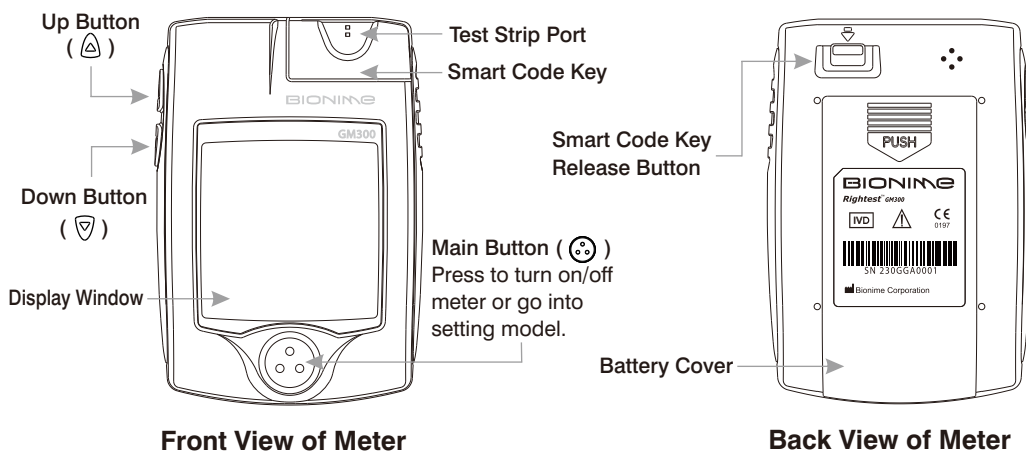
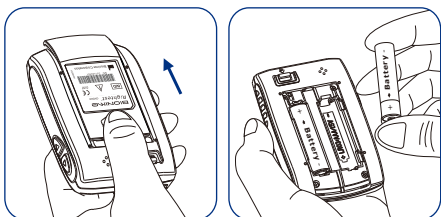


# Rightest™ GETTING STARTED GUIDE ( For self-testing )



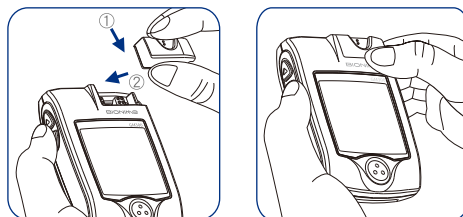
## 1 Batteries Installation

Turn the meter over. Press and push battery cover to open. Install both batteries at once. Be sure to put battery in correct direction.



## 2 Smart Code Key Installation

- 1) With the Meter off, follow ① and ② direction to put the new Smart Code Key into the track on code key base.
- 2) Push down the Smart Code Key until it snaps into the Smart Code Key base.

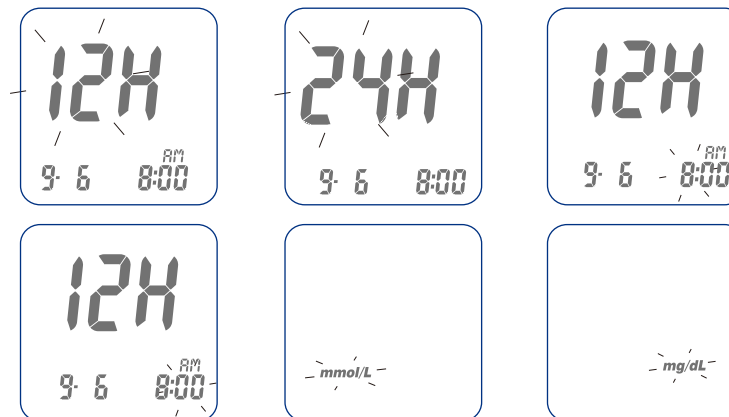


## 3 Setting Up Your Meter - Setting the Date, Time and Unit

- 1) Press and release main button "⊕" to turn on the Meter.
- 2) Press and hold main button "⊕" for five seconds until you go into the setting mode. Before you go into setting mode, you will see power off first. Please keep pressing it until you go into the setting mode. The year will flash.
- 3) Press up button "▲" or down button "▼" to change the year.
- 4) Press main button "⊕" to confirm the year and move to month setting.

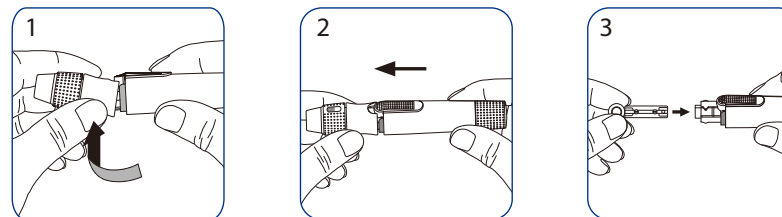


- 5) Repeat steps 3 and 4 to change the date, time format, hour, minute and measurement unit. After pressing the main button to confirm the measurement unit, your set-up has been finished.

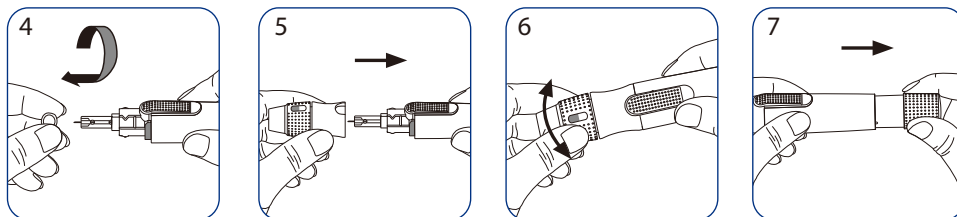


## 4 Preparing the Lancing Device

- 1) Hold the adjustable cap in one hand and hold the hub in the other hand. Bend the cap towards the down side. When a gap appears between the cap and hub, pull them off in opposite directions.
- 2) Pull off the depth adjustable cap.
- 3) Insert a new disposable lancet firmly into lancet carrier.

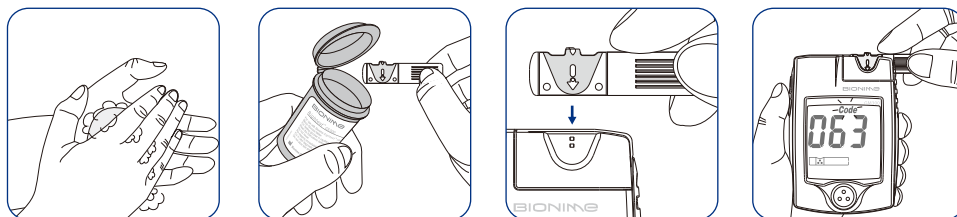


- 4) Twist off and set aside the protective cover of the disposable lancet.
- 5) Replace the depth adjustable cap.
- 6) Choose a depth of penetration by rotating the top portion of the depth adjustable cap until the setting depth matches the window. Settings are based on skin type  
 "□" for soft or thin skin;  
 "▤" for average skin;  
 "▨" for thick or calloused skin.
- 7) Hold the hub in one hand and pull on the plunger in the other hand. The device will be cocked. Release the plunger, it will automatically move back to its original position near the hub.

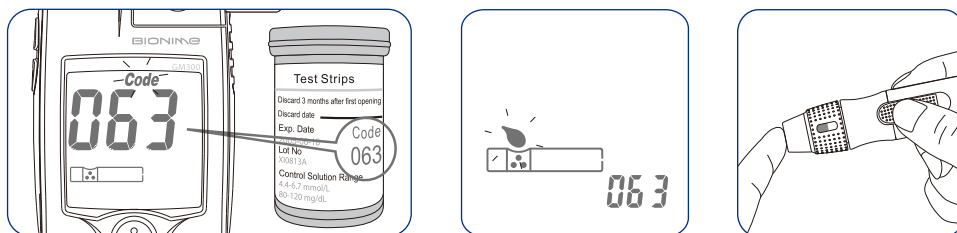


## 5 Performing a Test

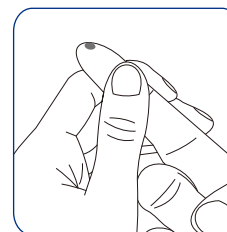
- 1) Wash and dry your hands. Take one strip from the vial. Close the vial cap immediately.
- 2) Insert the strip into the strip port on meter with the indication symbol facing up. Push the strip in until it snaps and stops. The meter will turn on automatically.



- 3) Make sure the code number on the meter screen matches the code number on the test strip vial.
- 4) When you see the flashing blood drop, hold the lancing device to side of your fingertip and press the release button.



- 5) Gently squeeze your fingertip to get a drop of blood. Our Meter only needs a tiny blood sample. We suggest to get a blood sample size around 1.4~2.5μl to test it. Please don't squeeze too much blood. Too much blood might contaminate the Smart Code Key.

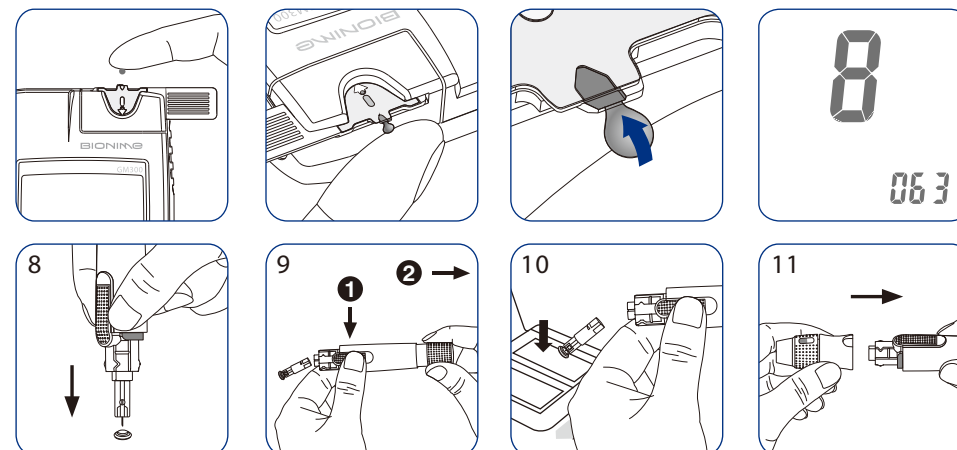


### Sample Size Example

1.0μl	1.4μl	2.0μl	3.0μl	4.0μl
•	•	•	•	•

We suggest you to take 1.4~2.5μl to do the test on glucose monitoring system. Blood sample size above 4.0μl is too much which will contaminate the Smart Code Key.

- 6) Touch and hold the drop to the edge of sample entry until you hear a " beep " and the view window is totally filled with blood. If the view window is not totally filled with blood or the test does not start. Then discard the test strip and repeat the test with a new test strip.
- 7) You will see the countdown mode on the screen. After 8 seconds, the test result appears. For more information about your test results, please see your User Manual.



- 8) Pull off the depth adjustable cap. Without touching the used disposable lancet, stick the lancet tip into the protective cover.
- 9) Hold the release button in one hand and pull on the plunger in the other hand will safely eject the used disposable lancet.
- 10) Discard the used disposable lancet into an appropriate puncture-proof or biohazard container.
- 11) Replace the depth adjustable cap after finishing the test.

**For more information on how to use your meter and understand your test results, please see the User Manual.**

**BIONIME**

BIONIME CORPORATION  
 694, Renhua Road, Dali Dist.,  
 Taichung City 412, Taiwan  
 Tel: 886-4-24951268 Fax: 886-4-24952568  
 Email: info@bionime.com  
 Website: www.bionime.com

EC REP  
 Bionime GmbH  
 Tramstrasse 16  
 9442 Berneck  
 Switzerland

CE  
 0197

101-3GM300-672  
 EN