

**OPERATOR'S MANUAL**

**PRO Mini Sander**  
**Hand Held Random Orbit Sander**  
**Model PSDMNI**



Serial Number: \_\_\_\_\_

**This machine is for commercial use.**  
**Save These Instructions**

**WARNING: OPERATOR MUST READ AND UNDERSTAND THIS MANUAL  
COMPLETELY BEFORE OPERATING THIS EQUIPMENT.**

# SAVE THESE INSTRUCTIONS FOR FUTURE REFERENCE


## IMPORTANT SAFETY INSTRUCTIONS


### WARNING


Read and understand all warnings and operating instructions before using any tools or equipment. When using tools or equipment, basic safety precautions should always be followed to reduce the risk of personal injury. Improper operation, maintenance, or modification of tools or equipment could result in serious injury and property damage. This product is NOT to be modified and/or used for any application other than for which it was designed.

### SAFETY GUIDELINES – DEFINITIONS


It is important for you to read and understand this manual. The information it contains relates to protecting **YOUR SAFETY** and **PREVENTING PROBLEMS**. The symbols below are used to help you recognize this information.

 **DANGER** Indicates an imminently dangerous situation which, if not avoided, will result in death or serious injury.

 **WARNING** Indicates a dangerous situation which, if not avoided could result in death or serious injury.

 **CAUTION** Indicates a potentially dangerous situation which, if not avoided, may result in personal injury.

### GENERAL SAFETY RULES

 **WARNING** Read and understand all instructions. Failure to follow all instructions listed below, may result in serious personal injury.

### SAVE THESE INSTRUCTIONS

#### Work area safety

- Keep work area clean and well lit. Cluttered or dark areas invite accidents.
- Do not operate power tools in explosive atmospheres, such as in the presence of flammable liquids, gases or dust.
- Keep children and bystanders away while operating a power tool. Distractions may cause you to lose control.

#### Electrical safety

- Power tools must match the outlet. Never modify the plug in any way. Do not use any adapter plugs with earthed (grounded) power tools.
- Avoid body contact with earthed or grounded surfaces such as pipes, radiators, ranges, and refrigerators.

- Do not expose power tools to rain or wet conditions.
- Do not abuse the cord. Never use the cord for carrying, pulling or unplugging the power tool. Keep cord away from heat, oil, sharp edges or moving parts.

#### Personal safety

- Stay alert, watch what you are doing and use common sense when operating a power tool. Do not use a power tool while you are tired or under the influence of drugs, alcohol or medication.
- Use safety equipment. Always wear eye protection. Safety equipment such as a dusk mask, non-skid safety shoes, hard hat, or hearing protection, used for appropriate conditions will reduce personal injuries.
- Avoid accidental Starting. Ensure the switch is in the off-position before plugging in.
- Do not overreach. Keep proper footing and balance at all times.
- Dress properly. Do not wear loose clothing or jewelry. Keep your hair, clothing, and gloves away from moving parts.

#### Power Tool use and care

- Do not use the power tool if the switch does not turn it on and off.
- Disconnect the plug from the power source before making any adjustments, changing accessories, or storing power tools.
- Store idle power tools out of reach of children and do not allow persons unfamiliar with the power tool or these instructions to operate the power tool.
- Maintain the power tools. Check for damages and any condition that may affect the power tools operation.

### CARTON CONTENTS

This tool comes with an instruction manual that includes a parts list.

PSD101 – 5" Backer Pads (3) PSD103 – Adjustable dust skirt (1)

### BACKER PAD INSTALLATION

Install the three, PSD101 – Backer Pads on the lower shafts of the Spindle Assemblies. Line up the screw on the back of the PSD101 – Backer Pads with the threaded holes in the lower shafts and turn counter-clockwise until finger tight.

### BACKER PAD SAVER INSTALLATION

Attach the three, PSD102 – Backer Pad Savers on the, PSD102 – Backer Pads by aligning the pads together

and pressing.

### **SANDPAPER INSTALLATION**

Attach the necessary sandpaper needed for the application by aligning the paper onto the disc.

### **DUST SKIRT INSTALLATION**

Once the above items are assembled, remove the Dust Skirt, PSD103 from the box and attach to the bottom of the deck plate ensuring the Dust Skirt you are attaching is level with the work surface for maximum vacuum suction.

### **VACUUM ATTACHMENT**

Slide end of the vacuum hose you plan to use onto the vac port. Should be 1.25" in diameter for the vacuum hose. This should fit snugly.

Ensure the vacuum remains on and connected during operation of the machine.

**! WARNING - AIRBORNE DUST CAN BE A SERIOUS FIRE HAZARD. ALWAYS FOLLOW THE MANUFACTURER'S INSTRUCTIONS FOR EMPTYING THE VACUUM CONTENTS.**

**NEVER LEAVE MACHINE ATTACHED TO THE VACUUM UNATTENDED.**

### **OPERATION**

**! CAUTION** Make certain the switch is in the "OFF" position before connecting the tool to the power source to avoid unintentional starting.

**! WARNING** Make sure to wear eye and ear protection when operating this equipment.

#### **USE A STANDARD 100v OUTLET.**

Plug in the vacuum and then turn on the vacuum. Plug in the machine, hold machine with two hands and turn the power switch to the "ON" position. The switch on the sander may be locked in the on position for extended use. To keep the sander running continuously, depress the trigger and push in the switch locking button on the left side of the handle. While holding the button in release the trigger. To release the locking button, depress the trigger and release.

Variable Speed - You can adjust the speed of the sander by turning the thumbwheel. Thumbwheel position #1 provides the slowest operating speed (3300RPM) and position #6 the fastest (4500 RPM). You can change the speed while the motor is "ON" or "OFF".

Always turn machine off and unplug when not in use.

Move machine slowly over area to be sanded, replace sandpaper as needed. When switching from one grit to another vacuum area thoroughly to avoid scratches from previous grit.

### **SANDPAPER**

This machine uses 5" hook and loop sanding discs. Various grits are available from the manufacturer in 24, 36, 40, 60, 80, 100, 120, and 180 grits.

### **MACHINE MAINTENANCE**

Turn machine off when finished using and unplug. Disconnect vacuum from machine and vacuum all dust from bottom of machine.

Turn off vacuum and unplug. Empty the vacuum according to the manufacturer's instructions immediately after use.

**! WARNING Fire Hazard** - Never allow standing dust to remain in the dust collection apparatus when not in use.

Empty the vacuum and remove from sander each time operator is leaving the work area of the sander. Dust particles can spontaneously combust causing a fire!

### **ACCESSORIES**

PSD101 - Backer Pads

PSD102 - Backer Pad Savers

PSD103 - Dust Skirt

PSDMNI-MAN - Manual

Sandpaper from the manufacturer- sold in 20 disc packs in various grits. Call for details.



# WARRANTIES

## WARRANTY - MOTOR

All issues concerning the motor/electrical operation/warranty please contact Porter Cable® per the enclosed Instruction Manual.

Porter-Cable®  
4825 Highway 45 North  
Jackson, TN 38305  
888-848-5175  
Www.porter-cable.com

**Your Product Model Number:** PRO Mini Sander \_\_\_\_\_

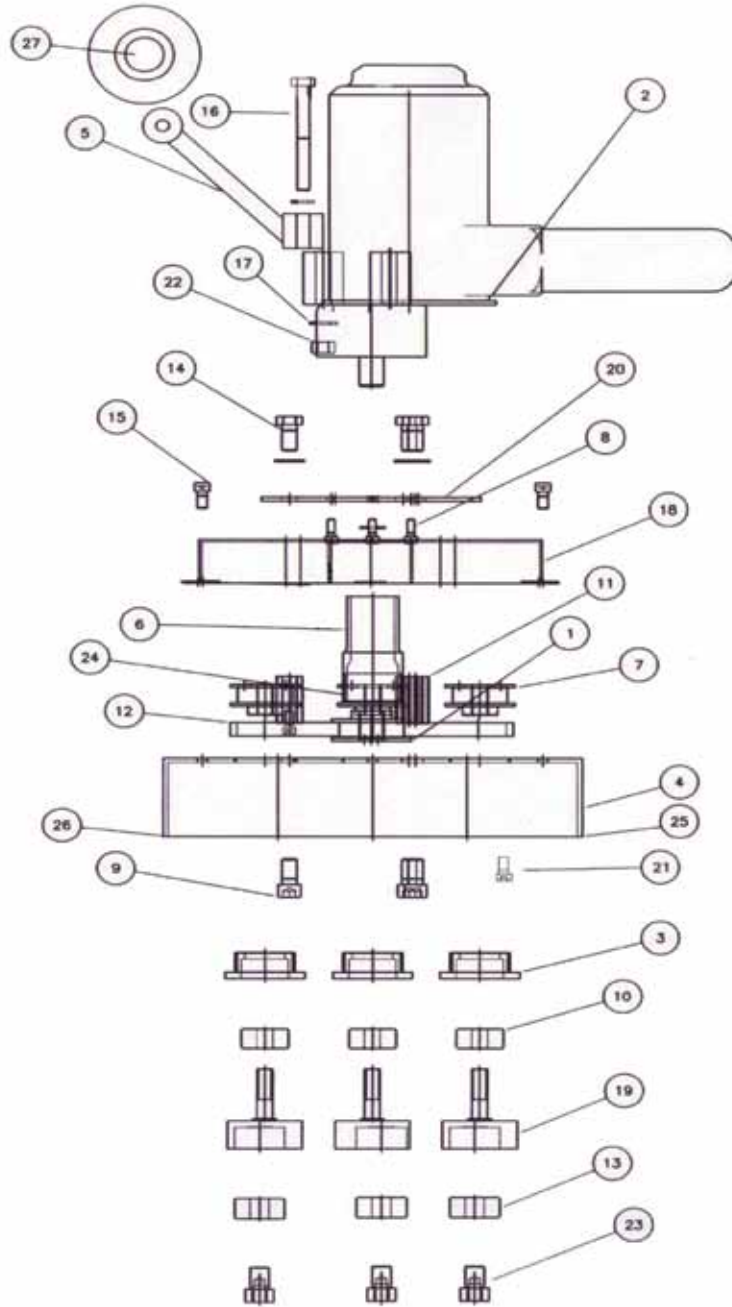
**Where to Obtain Service:** Call 1-800-880-2913.

**What to Do to Obtain Service:** Call 1-800-880-2913.

**For additional product information please contact**

Tacony Corporation  
3101 Wichita Court  
Fort Worth, Texas 76104  
Phone: 800-880-2913  
www.Powr-Flite.com

# SCHEMATIC AND PARTS LIST



ref#	order	description
1	<b>M-3002</b>	motor pulley
2	<b>MOTOR MINI</b>	7" vs 8 amp motor
3	<b>M-3003</b>	housing
4	<b>BB-002</b>	deckplate-mds
5	<b>M-3007</b>	handle
6	<b>M-3008</b>	vac port
7	<b>M-3001</b>	spindle pulley
8	<b>HW-007</b>	hex-shcs 8-32 x 3/4
9	<b>HW-006</b>	hex-shcs 3/8-16 x 3/4
10	<b>M-3005</b>	bearing housing 5200zz
11	<b>M-3009</b>	standoff
12	<b>HW-011</b>	belt
13	<b>M-3006</b>	bearing lower shaft 5201ls
14	<b>HW-003</b>	hex bolt

ref#	order	description
15	<b>HW-005</b>	hex-shcs 1/4-20 x 1/2
16	<b>HW-004</b>	hex-hms 5/6-18-3
17	<b>HW-008</b>	washer-5/16
18	<b>BB-001</b>	belt cover
19	<b>M-3000</b>	mainshaft
20	<b>BB-003</b>	motor mount
21	<b>HW-001</b>	bolt-shcs 10-24
22	<b>HW-002</b>	nut - h
23	<b>M-3004</b>	lower shaft - mds
24	<b>HW-012</b>	locknut
25	<b>M-3021</b>	dust skirt base
26	<b>M-3020</b>	dust skirt
27	<b>M-3022</b>	pc handle

## WARRANTY

The manufacturer warrants to the original purchaser that products manufactured are free from defects, provided such goods are installed, operated and maintained in accordance with written manuals or other instructions for a period of 1 year from date of purchase on workmanship, motor, and parts. In case you, as our customer, meet any trouble with your machine, contact a Powr-Flite representative, who will be happy to be of service to you and will take care of any warranty issues. This warranty covers normal use and does not cover damage which occurs in shipment or failure resulting from alteration, accident, misuse, abuse, neglect or improper maintenance.

### Additional Items Excluded From Warranty Coverage:

Appearance items of the product, knobs, filter, electrical cord, plugs, handle grips, dust skirt, drive belt, sanding pads, wheels, dust bag and dust bag attachment/assembly, or to accessories, mounting kit, seals, or any printed materials.

***Powr-Flite***<sup>®</sup>  
**COMMERCIAL FLOOR CARE EQUIPMENT**