

User's manual

1. Software for PC: Most computer with sata hard disk interface, win7 32-bit systems, configuration requirements, dual-core CPU, 3G or more RAM.

2. The software includes:

1) BMW Group ISPI Admin Client (V1.1.808) Software management program, display the software version installed in ISPI, the offline version

2) BMW Group ISTA (V3.50.10.14280) BMW diagnosis system, Circuit diagram, Repair Information

3) BMW Group ISTA-P (V3.56.1.002) BMW programming system, Expert Mode.

4) ETK (Lokal) (V 2015.06) BMW Electronic Parts Catalogue

1) KSD (V2015.05)

2) Engineer tools (Engineer tools)

● EasyComnnect ICOM connection tools

● E-sys (V3.26.1) BMW F series Diagnosis Coding

Programming

● INPA BMW E ,F series Diagnosis

● ItoolRadar ICOM connection tools

● NCS-Expert tool BMW E series Coding tools

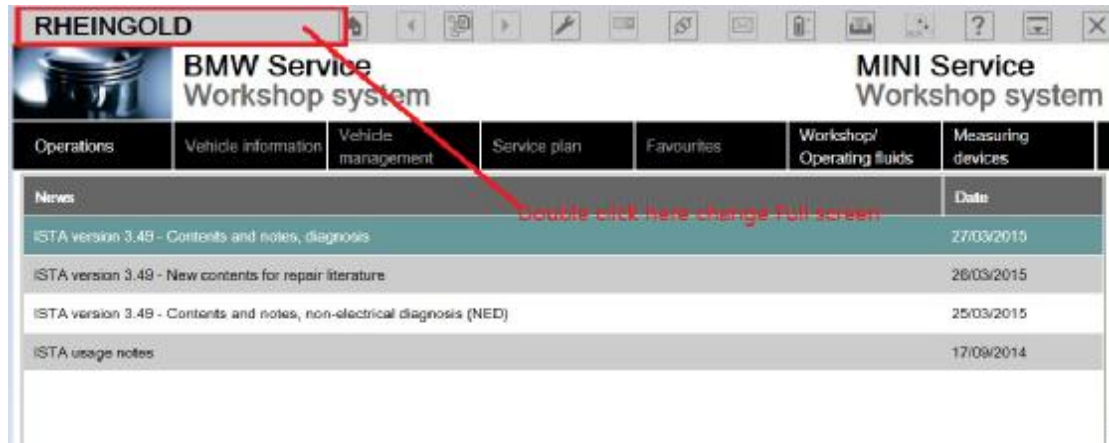
● WinKFP BMW E series Programming tools

● Win 7 language select change windows 7 language

3.How to use :

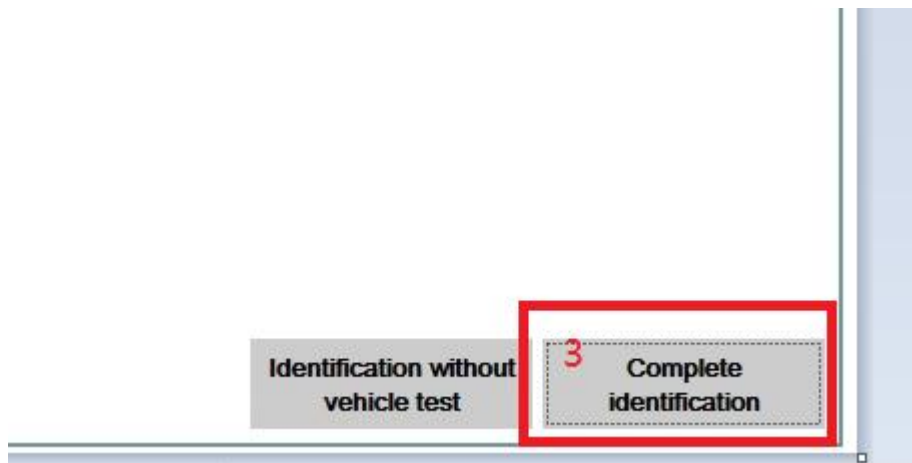
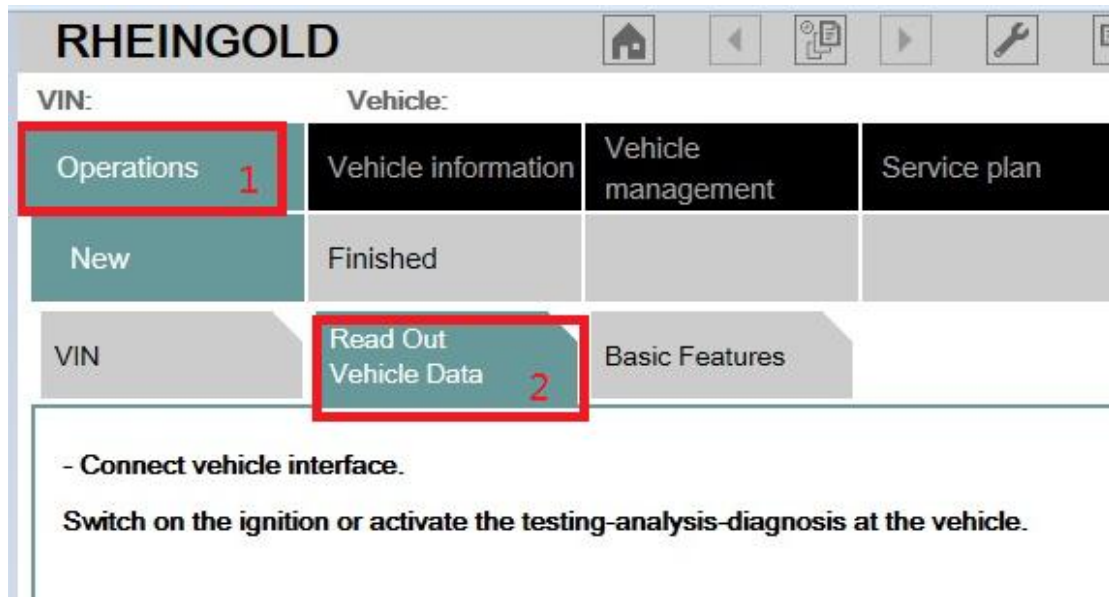
- Diagnosis: BMW Group ISTA , After open the software ,

Doubleclick the upper left corner to change Full Screen.



How to change ISTA Language : click the setting ICON,it will show

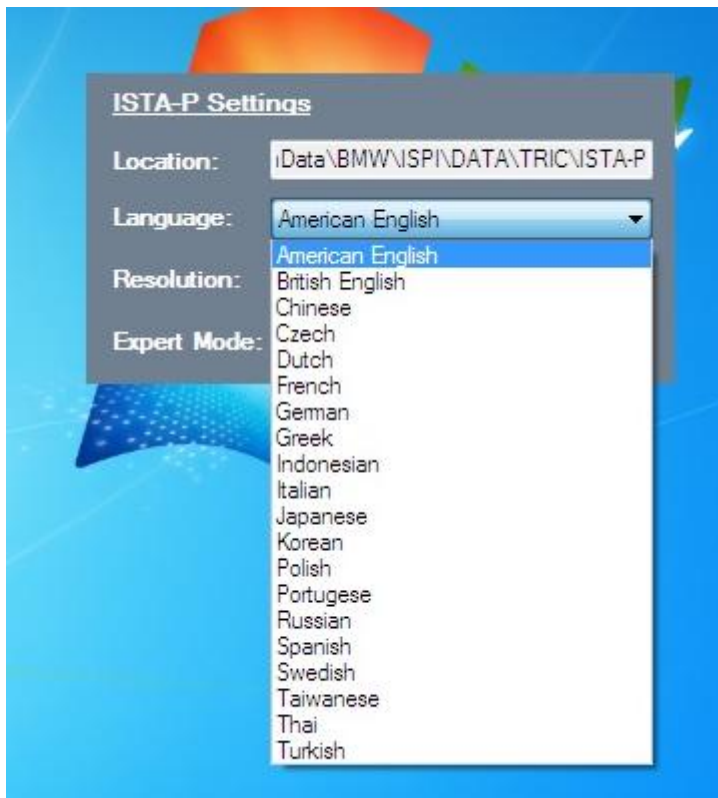




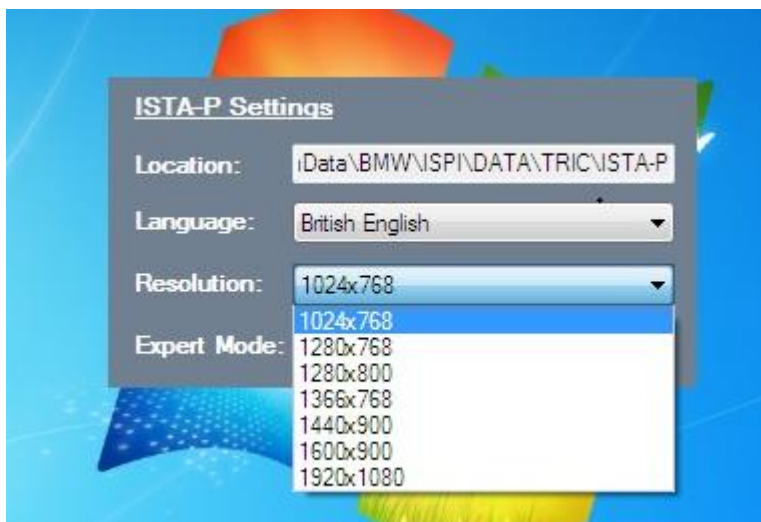
When it show ICOM ,you can click Lower right corner connect to start diagnosis (If the Status show firmware,you must update your ICOM firmware first)

● Programming, ISTA-P.

After open it , click Reset setting then close, open it again, you can enter the setting language and Resolution



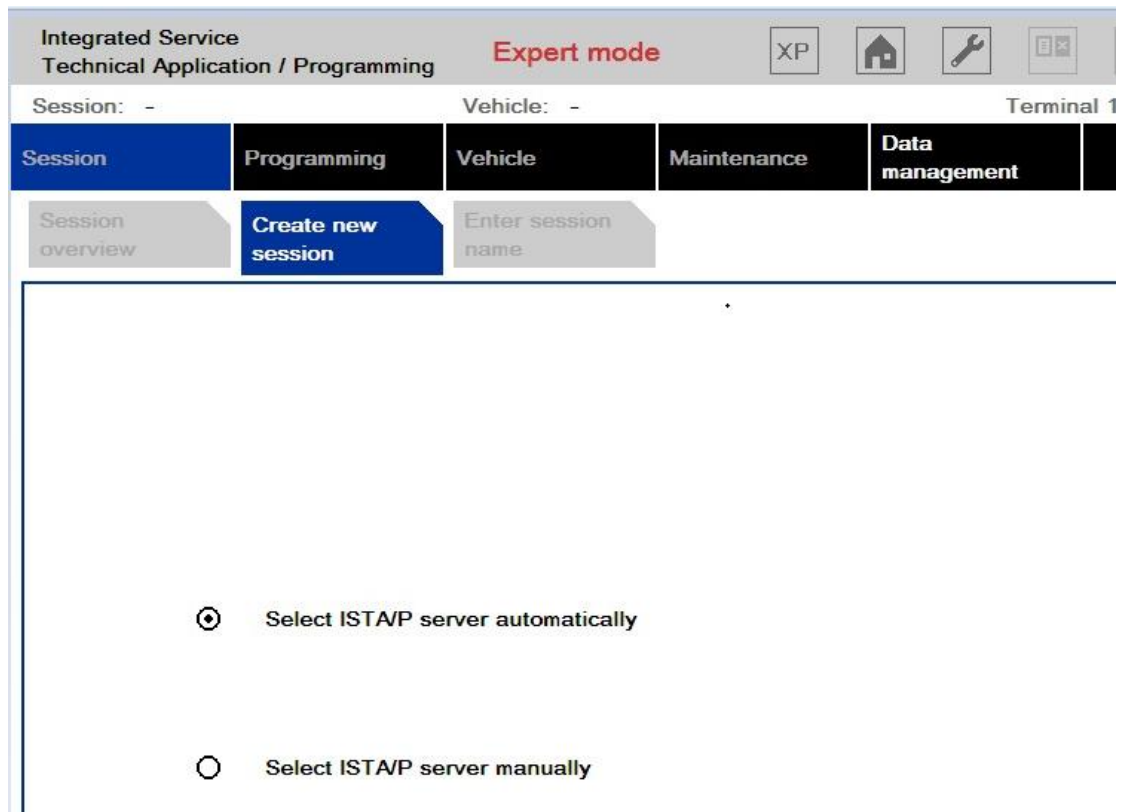
select your language



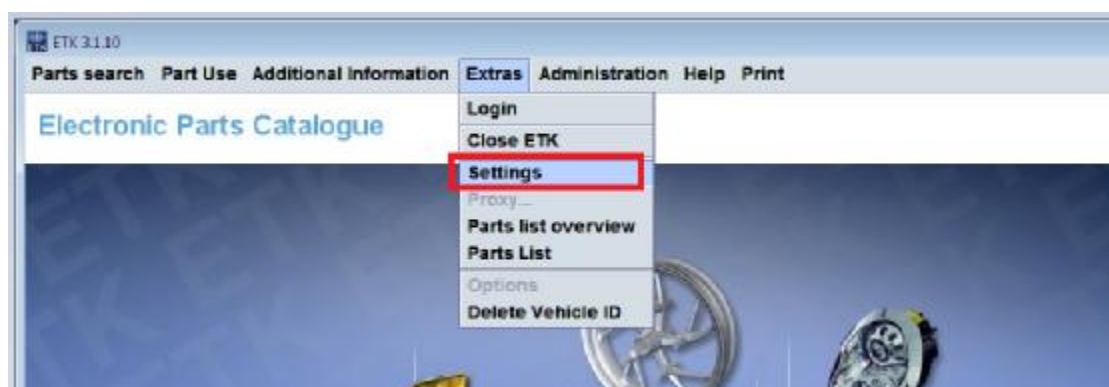
check your dosktop

Resolution and make sure it is the same as here you choose

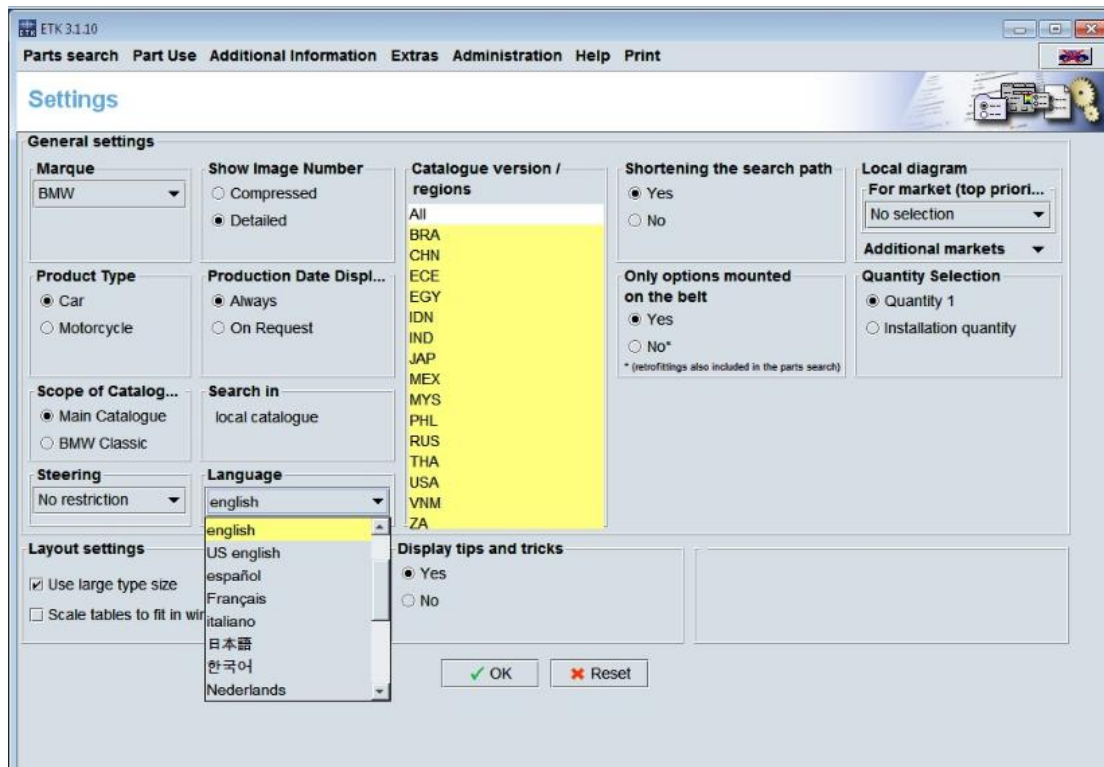
After setting you can choose BMW, mini, BMW motorcycles, Rolls-Royce



● ETK,



Setting language and other



● KSD



Click setting ,change your language and other setting

● Engineer software (Note:This software is for engineers with expertise,If you are not familiar with the software, we do not recommend using this software to do the test) INPA, Winkfp, NCS-Expert

Before using the software must be setting connection to ICOM

① open engineer tools, ItoolRadar, click first line,, Click

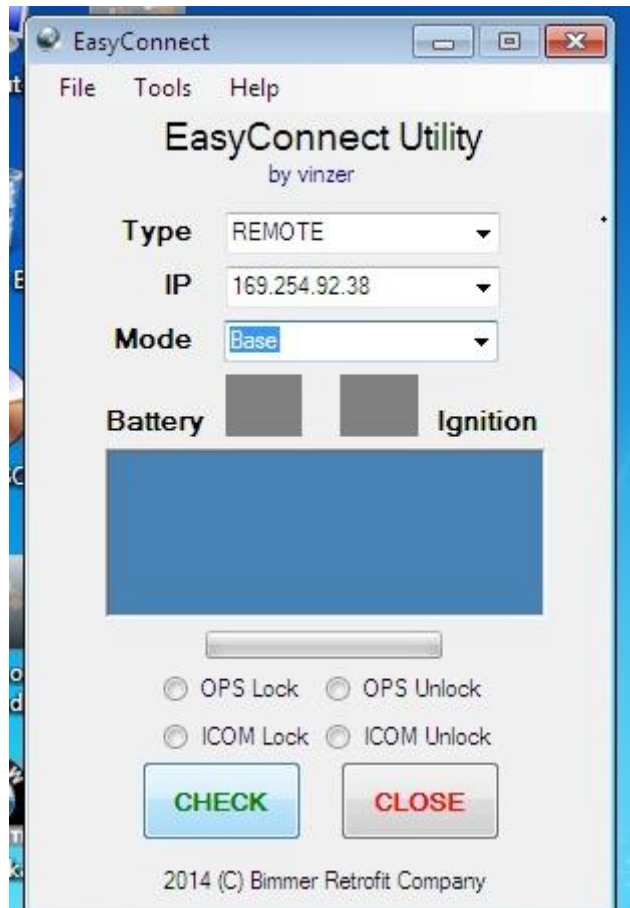
Reserve



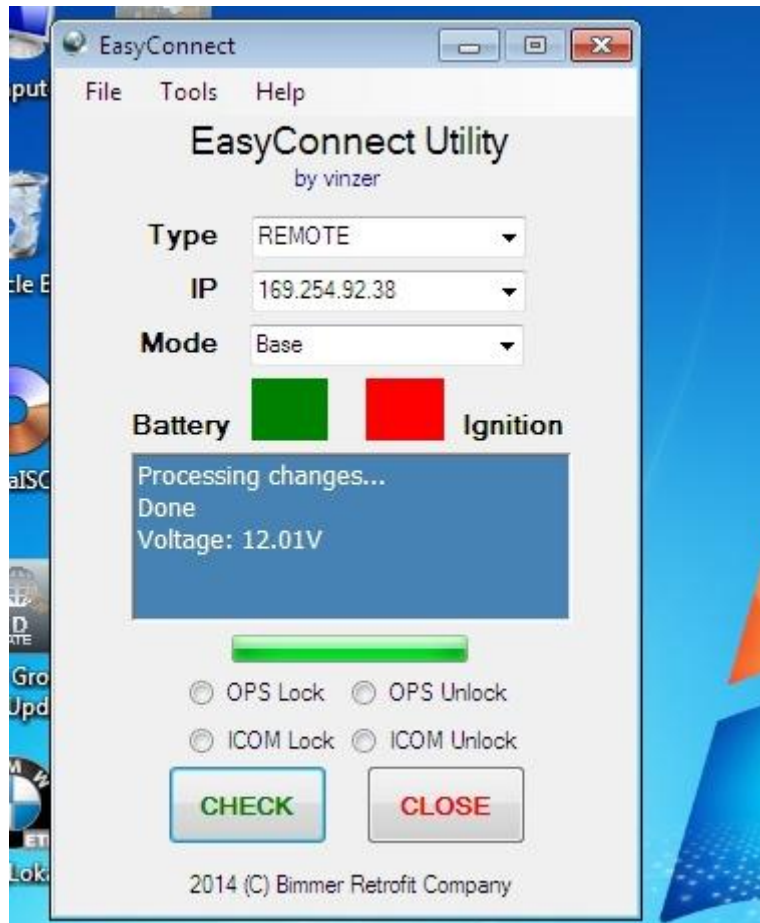
Then ICOM status will change to Reserve



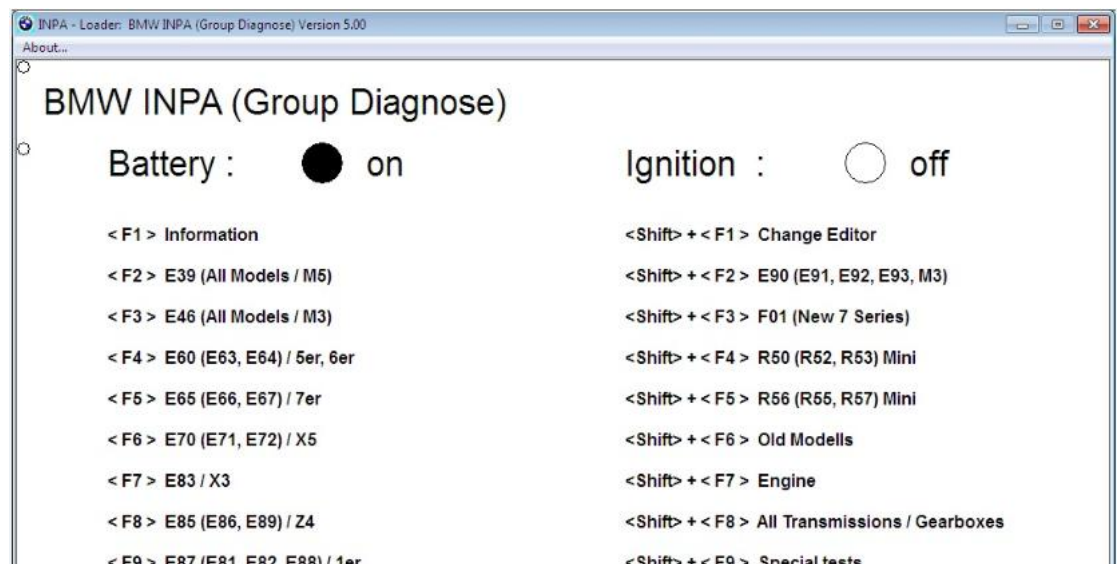
② Open EasyConnect, Set as follows, The IP address must be Correct

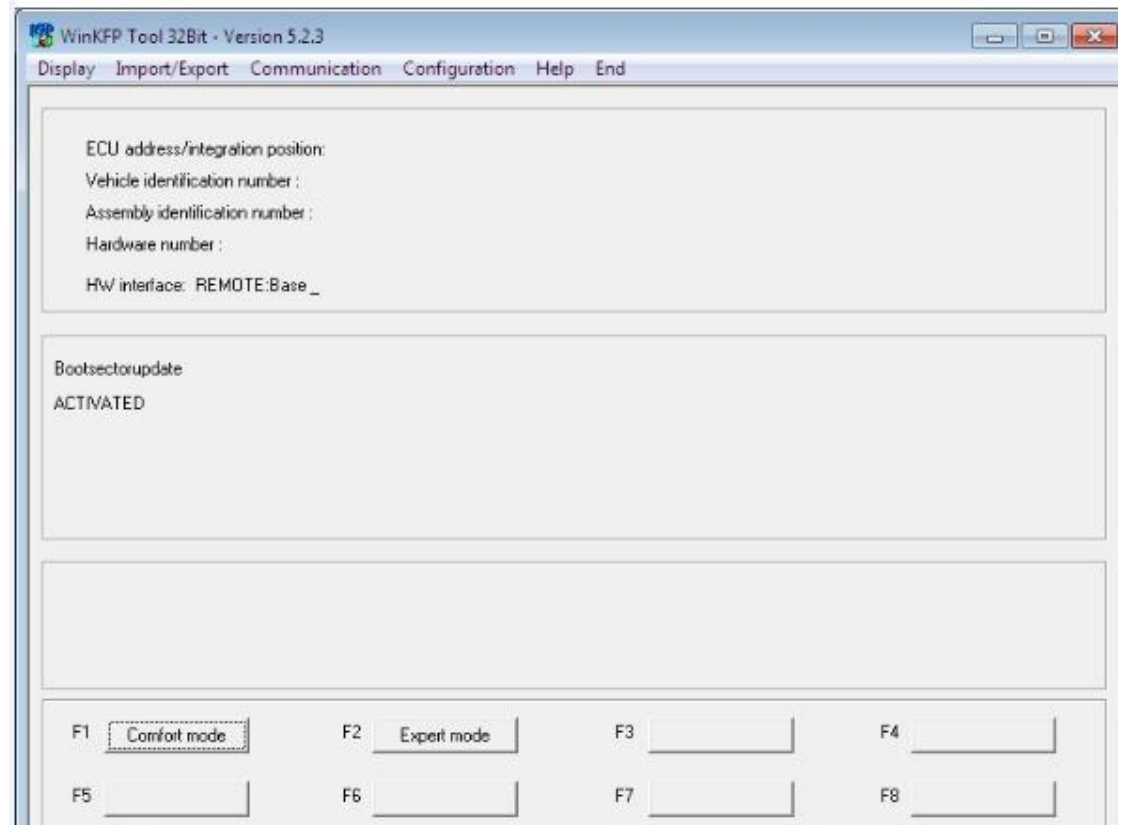


Click CHECK, as follows



③ Open INPA,Winkfp,NCS,It will be OK,





● ICOM Firmware Update

(Update file in: D:\ICOM_firmware-01_38_00)

- 1、 Please connect ICOM with Lan cable to the computer, charge ICOM via 12 power adapter
- 2、 use IE explorer to open <http://169.254.92.38:60080/>, user ID/password: root/NZY11502
- 3、 click " update firmware". You will get the ICOM hardware version
- 4、 choose "ICOM-BootImage-01-24-00.bin", set the "image type" into " SYSTEM", then click " send the file"
- 5、 when it shows " write the image file to the flash?", click "yes",

then light in ICOM will turn red

6、 then it shows "The SYSTEM IMAGE update was successful",
click" update firmware"

7、 choose ICOM-ApplicationImage-01-38-02.bin, change image
type to APPLICATION, click" send the file", it will take some mins
to finish

8、 when it shows: "Write the image file to the flash?", click " yes",
then ICOM light will turn to red again

9、 when all runs ok, click" reboot"

10、

●Change win 7 Language

Open win7 language select , select the language you want and click
change language

