

Bluetooth® MP3 Headphone



User Manual



MP3
Playback



FM
Radio



Bluetooth
Mobile
Headset



Bluetooth
Audio
Streaming

Bluetooth® MP3 Headphone

Contents

1. PREFACE	01
2. INTRODUCTION	01
3. PRODUCT FEATURES	02
4. STARTING TO USE HEADPHONE	02
4.1 Package Contents	
4.2 Product View	03
5. PREPARING THE BLUETOOTH MP3 HEADPHONE	03
5.1 Charging Battery	
5.2 Battery Status	04
5.3 Wearing the Bluetooth MP3 Headphone	
5.4 Operate Headphone	05
5.5 Reset	06
5.6 Adjust Microphone Volume	
5.7 Lock	
6. OPERATING HEADPHONE	07
6.1 Power on/off Bluetooth MP3 Headphone	
6.2 Pair up with Bluetooth Mobile Phone	
6.3 Using Headphone as a Bluetooth Headphone	08
6.4 Using Headphone as an Individual MP3 Player	
6.5 Using Headphone as a Bluetooth Audio	09
6.6 Using Headphone as a FM Radio	
6.7 Voice Chatting Function	10
6.8 Transfer Songs & Files	
6.9 Firmware Upgrade	11
7. COMPATIBILITY	15
8. TROUBLE SHOOTING	15
9. WARNINGS & PRECAUTIONS	16

1. PREFACE

Copyright

Information in this document has been carefully checked for accuracy; however, no guarantee is given as to the correctness of the contents. The information in this document is subject to change without notice. This document contains proprietary information protected by copyright. All rights are reserved. No part of this manual may be reproduced by any mechanical, electronic or other means, in any form, without prior written permission of the Corporation.
Copyright © 2004, All Rights Reserved.

Trademarks

All the logos and trade marks, including the Bluetooth name from SIG, are the properties of their respective owners. Bluetooth is trademark of the Bluetooth SIG, Inc. (Special Interest Group). The Bluetooth trademarks are owned by Bluetooth SIG, Inc. USA.

About this Manual

This manual is designed to assist you in setting up and using your Bluetooth MP3 Headphone and provides information on the essential hardware required to use your Headphone. Read this manual carefully before you begin to use the product.

2. INTRODUCTION

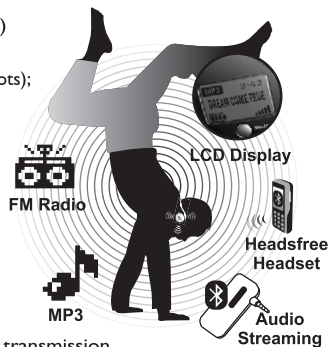
This is the era of wireless; consumers don't want to get tangled up with all the cords and have to sit in one place for a long time. People also want to enjoy their leisure time and be able to do something else at the same time.

Bluetooth MP3 Headphone featuring a unique one piece design will change the way you listen on the go and in the office. The lightweight, elegant and comfortable one piece neckband headphone includes a MMC / SD card slot for unlimited expansion for MP3 and a FM radio to allow you to switch to your favorite radio stations in an instant. The Bluetooth MP3 Headphone supports playing of all MP3 and WMA format of music. The playback source (FM or SD card) are available at the touch of a single button. LCD indicates the current playback source and battery status. While enjoy the playback of MP3 or favorite radio stations the headphone will switch mobile phone in the instant when received a incoming call, users will never miss any important phone calls. Furthermore, Bluetooth MP3 Headphone allows you to listen to your music from your PC to Headphone through a multimedia dongle.

Bluetooth MP3 Headphone is a lighter and more comfortable than similarly designed products, it is also supports firmware upgrades through the USB interface.

3. PRODUCT FEATURES

- MP3/WMA support MP3 (Decode)
- FM Tuner - Radio
- LCD control (LCD display 128 x 64 dots); User Interface displaying
- Support Bluetooth A/V, A2DP, Headphone and hands-free profiles compliant
- Automatically switching to mobile phone while listening MP3, FM radio or audio streaming from computer.
- Operation range up to 10 meters range in open space for Bluetooth transmission
- Stereo audio streaming from PC/Bluetooth devices, and mono audio from mobile phone.
- Download the music or file into MP3 player via USB.
- Firmware Upgradeable.
- Automatically Power control for optimal power consumption.
- MMC/SD card support
- Auto-pairing by pair button.
- Rechargeable Lithium Polymer battery provided. Up to 4 hours of music streaming and BT function at same time for every charge.



4. STARTING TO USE HEADPHONE

4.1 Package Contents



■ Bluetooth MP3 Headphone



■ Travel case



■ USB cable

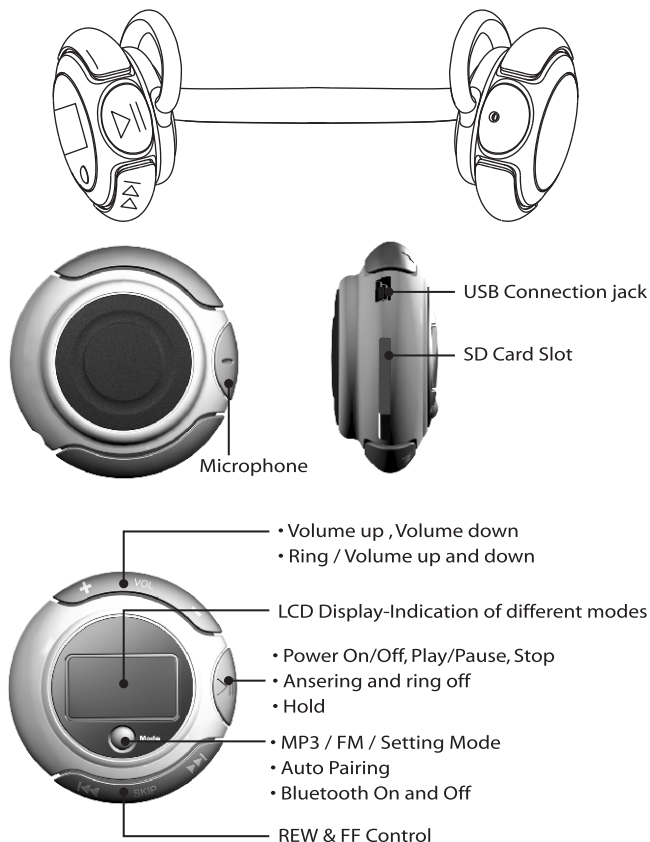


■ AC adaptor



■ User Manual & Quick Guide

4.2 Product View



5. PREPARING THE BLUETOOTH MP3 HEADPHONE

This section describes how to do the initial battery charge and how to wear the Headphone. Read the following sections carefully before attempting to use your new Headphone.

5.1 Charging battery

- Charging your battery for first time will take up to **8 hours** or until the battery status indicator on the LCD screen become black.
- The Headphone uses an exclusive Lithium-polymer battery which can be fully charged within **2 hours** of being completely discharged.
- Depending on the user's convenience, the player can be charged by using a USB cable or adaptor.

1 Charging with a USB cable

Connect a USB cable between a PC and the player. Then the player will be charged automatically while it is turned off.



2 Charging with an AC adaptor

The player can be charged with an AC adaptor included in the package.



CAUTION: Please use the charger provided on the package to charge the headphone **ONLY. DO NOT** attempt to charge the headphone with other type of charger, it may result the damage of headphone.

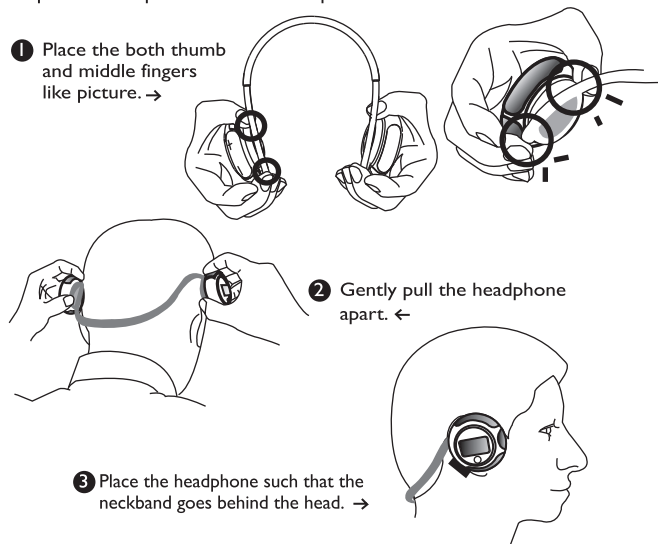
5.2 Battery Status

When the battery is low, there will be two indications show on the headphone. The battery icon on the LCD will be show **low power**. When operate headphone and the battery is low, user will be able to hear **warning beep tone** on the headphone.



5.3 Wearing the Bluetooth MP3 Headphone

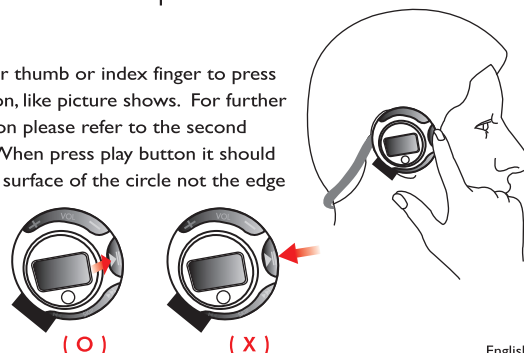
To put the headphone follow the sequence:



5.4 Operate Headphone

Play

Use either thumb or index finger to press play button, like picture shows. For further explanation please refer to the second picture. When press play button it should press the surface of the circle not the edge of circle.



Skip (FF or RW)

The method to adjust FF or RW is different than volume function, there are two separate ways to operate FF and RW.

1. To RW - use middle finger as a support point and use the thumb to press RW button. Please refer to picture for further detail.
- 2.. To FF - use thumb as a support point, firmly press SD card and use middle finger to press FF button. Please refer to the following picture for further detail.



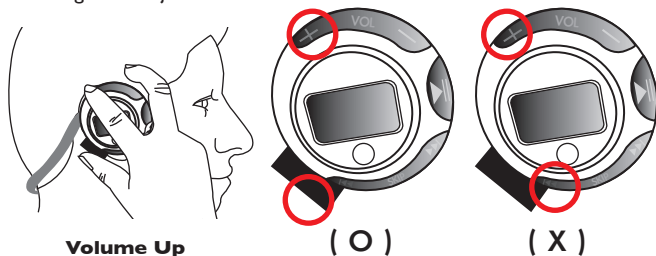
To RW



To FF

Increase and Decrease volume

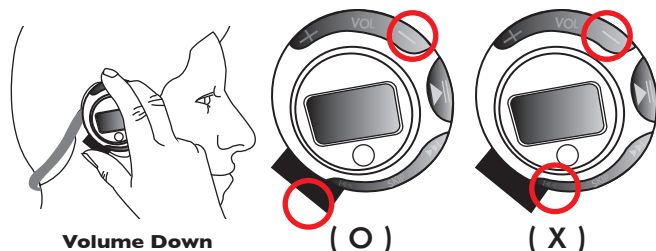
The volume of the Bluetooth MP3 Headphone can be adjusted by pressing the "Volume Up" or "Volume Down" buttons accordingly. Use the thumb as a support point and place on the SD card firmly, use index and middle fingers to adjust volume.



Volume Up

(O)

(X)



Volume Down

(O)

(X)

(O) Correct:

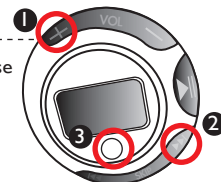
Place thumb on the corner of SD card then adjust "Volume up" or "Volume down". Place your finger on the circle part of headphone while operate either volume up or volume down.

(X) Incorrect:

Place thumb on the skip button to adjust "Volume up" or "Volume down" may interfere operation of the headphone. **DO NOT** place your finger on the circle part while operate volume up or volume down.

5.5 Reset

If the static has interfere with the headphone, please press **Volume up** and **FF button** and **Mode button** to reset the operation of the headphone. The headphone will operate normally.



5.6 Adjust Microphone Volume

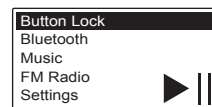
Users can adjust the headphone microphone volume during a call, by pressing **FF** or **RW** to increase or decrease the capability of receive the voice. Method of operation same as operate skip button.

5.7 Lock

To prevent the headphone get turn on by accidentally, Bluetooth MP3 headphone has implement lock up function.

To Lock

1. Press **Mode** button for 3 seconds to enter main menu
2. There will be a function call "Button Lock"
3. Select "Button Lock" press **Play** button the whole buttons will lock



To Unlock

To unlock the headset, user holds the "**Mode**" button down, if the headset is in lock mode it will unlock. If it is not in lock mode it will go to menu mode like normal.

6. OPERATING HEADPHONE

6.1 Power on/off Bluetooth MP3 Headphone

Hold down play/pause ►|| for **3 seconds** until the LCD display "Bluetooth MP3 Headphone." Headphone automatically will enter from the last selected mode. To power off, hold down play/pause ►|| for **3 seconds** until LCD gone blank then release thumb.

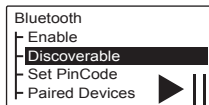
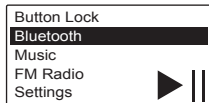
6.2 Pair up with Bluetooth Mobile phone

- 1 Press mode button 3 seconds to enter menu mode.

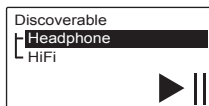


3 seconds

- 2 Press play/pause button to enter Bluetooth mode, use FF/RW button to select "discoverable" and press play/pause button



- 3 Once into discoverable there will be Headphone and HiFi will be selected, press play button then you will hear **three short beeping** sound.



- 4 Make sure turn on your Bluetooth MP3 Headphone and mobile phone, set the headphone to pairing-ready status, and follow the instruction of your mobile phone to pair up.

NOTE:

Please refer to the following example of Sony Ericsson / Ericsson Bluetooth phone for pair up. Different mobile phone has different procedure for pairing.

- 5 When the phone is success to pair up with Headphone, key in "0000" as pin code on the mobile phone.



Key in "0000"

- 6 The Bluetooth Headphone is ready to use.

EXAMPLE:

Pairing with a Sony Ericsson /Ericsson Bluetooth Phone

1. Turn on your Bluetooth Headphone and mobile phone. Set the headphone to pairing-ready status.
2. Select "Connectivity" and "Yes".
3. Select "Bluetooth" and "Yes".
4. Select "My devices" and "Yes"; "New Device"; "Searching..." appears on screen. When the mobile phone finds the Headphone, it shows the Headphone name. Select the Headphone and select "Add to paired". Then select "Yes".
5. When you are prompted to enter a pass key, enter passkey "0000" and select "Yes" to start the pairing process.
6. "Pairing" and "Pairing succeed" messages appear on the screen.

6.3 Using Headphone as a Bluetooth Headphone



Making a call from a Bluetooth Phone

You can place a phone call with your Headphone linked to your mobile phone. Use your mobile phone to dial the desired number and then use the Bluetooth Headphone to talk and listen to the caller. If you want to use your mobile phone to talk / listen, then follow the following steps to disconnect the paired link between the Headphone and the mobile phone.

Receiving a call with the Headphone

When you have completed pairing the Bluetooth MP3 Headphone with your mobile phone, and have set up the link properly, you can use the Headphone to receive incoming phone calls. When you hear a ring tone, press the play/pause button ►|| on the Headphone to receive the incoming call. During a telephone session, if the Bluetooth Headphone exceeds the range of the operational distance, the link will be disconnected. The mobile phone will ask you if you want to resume the telephone session, the message will show on the Mobile Phone screen like **"Bluetooth Connection lost, Retrieve Call to phone?"** If yes, the telephone will be transferred back to the mobile phone. If no, the telephone session will be interrupted.

Bluetooth Connection lost, Retrieve Call to phone?



Ending a Call from the Headphone

When your telephone session is ended and the caller hangs up the Headphone and your mobile phone are ready to receive new calls and will back to the last function before you answer the telephone.

6.4 Using Headphone as an individual MP3 player

Within the headphone, there will be no embedded flash memory inside, the headphone only can use SD/MMC card only.

- Press and hold ►|| until your headphone turns on.
- After turn on the Headphone, press **"Mode"** button if the MP3 player content doesn't appear repeat it until appears. MP3 files in the SD card should be appearing on the LCD.
- After moving to a desired MP3 file by using the **skip button**, press the play button ►|| for playback.
- The selected MP3 file will play.
- When the **skip button** is used during playback, the previous file or next file will play.
- When the play/pause button ►|| is pressed, current playback song will stop.
- Press volume + to increase or volume - to decrease the volume.
- After you have finished using your player, press and hold play/pause button ►|| until your headphone turns off.



6.5 Using Headphone as a Bluetooth Audio

- Press “**Mode**” button if the Bluetooth audio icon doesn’t appear, repeat until it appears.
- To Connect or disconnect press “play/pause” button ►|| to turn on/off
- Adjust volume press + or – button. If you want to increase or decrease multiple levels of volume press and hold button until you reach the level you want.



NOTE: For audio streaming please purchase the multimedia dongle ONLY from same manufacturer of Bluetooth MP3 Headphone.

6.6 Using Headphone as a FM radio

There are three different frequent select modes:

- Frequency, Preset and Scan.
- The default setting for radio mode is Frequency.
- Use skip buttons FF/RW to adjust the channel.

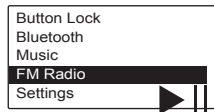


- 1 Press mode button 3 seconds to enter menu mode.

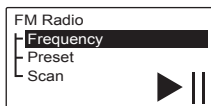


3 seconds

- 2 Skip button to FM Radio



- 3 Skip button to Freq Select Mode



Skip button to select either preset or scan and press play/pause

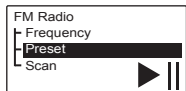
- 4 Press Mode for three second to exit



3 seconds

NOTE: The FM function is recommended to be used outside.

- Use Preset function to set all favor stations



The following are the steps to preset FM Radio station for the headphone:

Mode (2 seconds) --> Skip key (twice) --> FM Radio (Play key to enter) --> skip key (twice)

--> Set Preset Channels (Play key to enter) --> skip key to select a channel --> volume to set desired frequency --> Finish all preset channels i Play key (to save all preset channels)

The following are the steps to choose preset channel option:


Mode (2 seconds) --> Skip key (twice) --> FM Radio (play key to enter)

--> Play key (to enter) --> skip key (once) --> Play key (to select) -->

play key (saving data & exit)

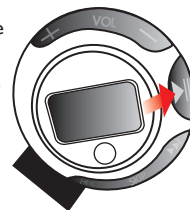
6.7 Voice Chatting Function

The Bluetooth MP3 Headphone can pair up with Bluetooth Data Dongle which users able to obtain on the market to use for two way voice communication. The steps as the following:

- Follow the installation steps of Bluetooth Data Dongle
- Double click “My Bluetooth Place” icon  on the desktop and follow the Bluetooth Data Dongle’s step to pair up the headphone and dongle.
- Make sure Bluetooth MP3 Headphone are in pairing mode. When the headphone is successful pair up then right click the icon of headphone, select “Connected”



- When a bell tone is heard from the Headphone, press “►||” button to establish the connection.



- When the two way communications has been established it will be able to start to talk.

6.8 Transfer Songs & Files

- Connect our Headphone to your computer’s USB port using the supplied USB cable.
- Launch Windows Explorer on your computer. Your Headphone is recognized as a Removable Disk in Windows Explorer.
- Transfer **MP3 / WMA** or **non-music files** to your Headphone, SD card using a drag-and-drop operation.
- After the transfer is complete, make sure you stop your Headphone before disconnecting it from your computer.



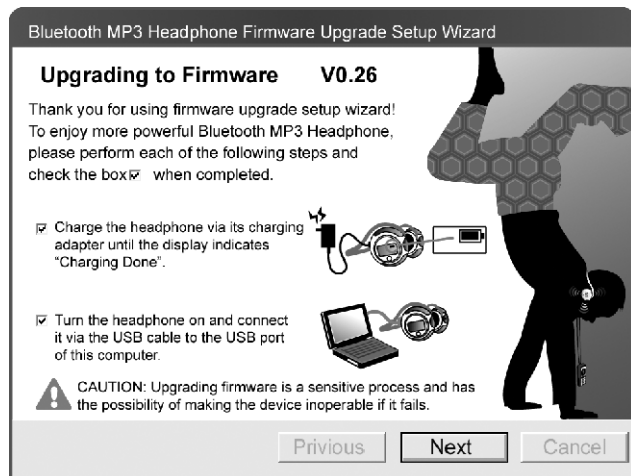
To stop your player in Windows 2000, Windows Me or Windows XP

- Click the **Safely Remove Hardware** icon on the taskbar, click **Safely remove USB Mass Storage Device**, and disconnect your headset when you are prompted to do so.

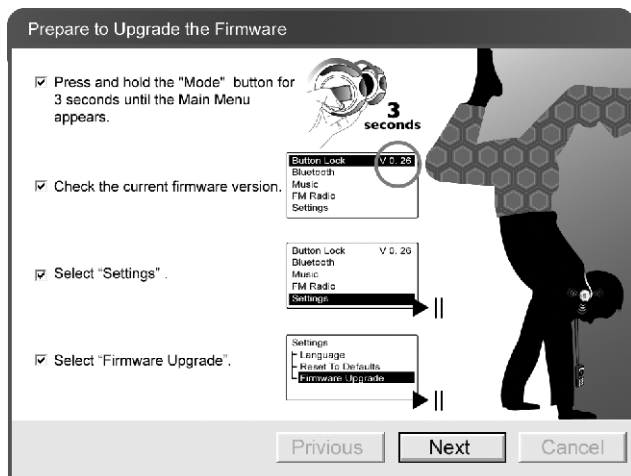
6.9 Firmware Upgrade -----

If a Bluetooth MP3 Headphone firmware upgrade becomes available, follow the procedure below to update Bluetooth MP3 Headphone's internal firmware:

Step 1

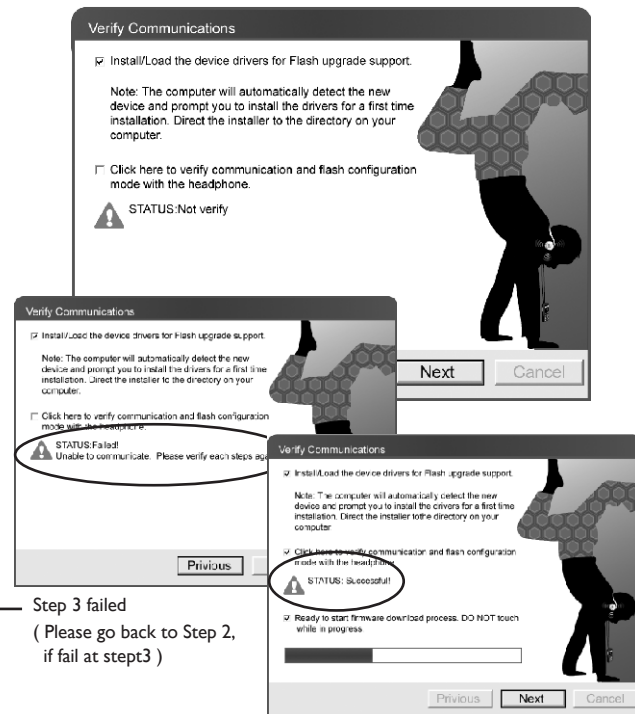


Step 2



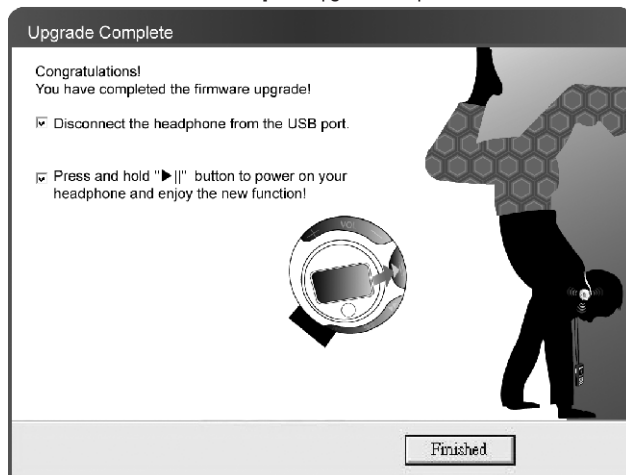
(USB driver installation)

Step 3

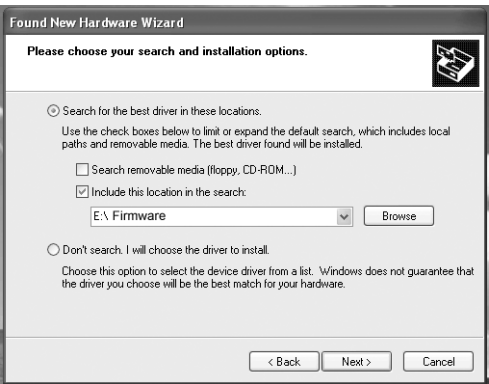
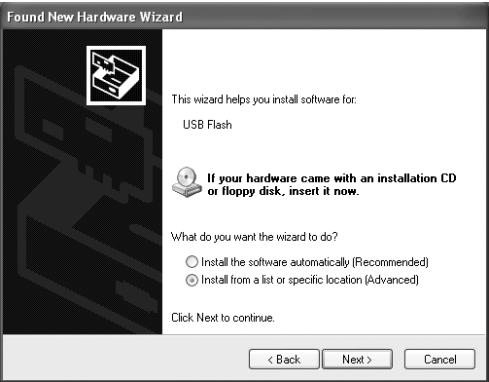


Step 3 successful

Step 4 : Upgrade Complete



USB driver installation



After you clicked Continue Anyway from the previous step, the whole driver installation will run automatically until it complete., then you can click "Finish".

7. COMPATIBILITY

Motorola	E398, E680, A768i, V501, V80, V3, V600, V600i, V780
Nokia [®] ❶	6260, 6230, 6600, 6820, 7600, 7610
Siemens [®] ❷	S65
Pantech	G800
Sony Ericsson	T610, T630, Z600, K700i, P910i
Panasonic [®] ❸	X11, X70, X88

Note:

- *❶ The incoming ring can't be heard through the Headphone. However, pressing a button of the Headphone is still available to pickup the incoming call.
- *❷ The outgoing ring can't be heard through the Headphone. On the contrary, the Headphone will automatically answer once the receiver picks up the call.
- *❸ The outgoing ring can't be heard through the Headphone. Please press a button of the Headphone as soon as the phone screen displays "voice call" message.

8. TROUBLE SHOOTING

If you are encounter difficulties, please read this entire section before return the goods:

- Q1. If the Headphone does not turn on when the ON button is pressed:**
- A1.** The battery may be depleted, make sure the battery is fully charged.
- Q2. If Headphone is not recognized by Windows:**
- A2.** Check the USB connection between your Headphone and the computer. Verify that the PC's USB drivers are properly installed. The OS below Windows ME, doesn't support it.
- Q3. Why does the player skip certain tracks?**
- A3.** The player will only play valid media formats (MP3 and WMA files). Other types of media formats will be skipped.
- Q4. Why does the player turn off immediately after it is turned on?**
- A4.** The battery may be too depleted to power your player. Try charging the battery.

9. WARNINGS & PRECAUTIONS

Carefully read the following safety and operating instructions. Keep this document handy for future reference.

- ⚠ Do not subject the Headphone to extreme force**
Vibration during walking or exercising will not affect the Headphone. However, dropping the Headphone or dropping the heavy object on the Headphone may result in distorted sound and/or damage to the unit.
- ⚠ Keep the Headphone away from water at all times**
The Headphone may be damaged if water enter it. If the player comes in contact with water, wipe it immediately with a dry cloth.
- ⚠ Keep the Headphone away from small children**
The Headphone contains small parts that present a choking hazard.

- ⚠ Do not operate a motor vehicle while using the Headphone**
In many countries, using the player while operate a motor vehicle is illegal. It's also dangerous.
- ⚠ Store the Headphone with care**
Avoid keeping the Headphone and the flash memory card on or near high heat sources or in places with high humidity. 60°C (140°F)
- ⚠ Cleaning the Headphone**
Disconnect the power supply adapter (not included) from the wall outlet or power source before cleaning. Do not use liquid or aerosol cleaners. Use a damp cloth for cleaning.
- ⚠ Servicing**
Do not attempt to service any part of the product yourself. Servicing should only be done by qualified service personnel.
- ⚠ Power Sources**
Refer to the operating instructions included in your documentation and markings, if any, on the product.