

# Makita

アメリカ

## Belt Sander

MODEL 9030

### INSTRUCTION MANUAL

#### Belt Sander & Standard Equipment



- ① Tool body
- ② Abrasive belt set for wood & iron  
(2 ea. of 5 different grits)

 **DOUBLE INSULATION**

#### SPECIFICATIONS

| Belt size                         | Belt speed                  | Overall length   | Net weight     |
|-----------------------------------|-----------------------------|------------------|----------------|
| 30 mm x 533 mm<br>(1-3/16" x 21") | 1,000 m<br>(3,280 ft.)/min. | 377 mm (14-7/8") | 1.8 kg (4 lbs) |

\* Manufacturer reserves the right to change specifications without notice.

\* Note: Specifications may differ from country to country.

## IMPORTANT SAFETY INSTRUCTIONS

**WARNING:** When using electric tools, basic safety precautions should always be followed to reduce the risk of fire, electric shock, and personal injury, including the following:

### READ ALL INSTRUCTIONS.

1. **KEEP WORK AREA CLEAN.** Cluttered areas and benches invite injuries.
2. **CONSIDER WORK AREA ENVIRONMENT.** Don't use power tools in damp or wet locations. Keep work area well lit. Don't expose power tools to rain. Don't use tool in presence of flammable liquids or gases.
3. **KEEP CHILDREN AWAY.** All visitors should be kept away from work area. Don't let visitors contact tool or extension cord.
4. **STORE IDLE TOOLS.** When not in use, tools should be stored in dry, and high or locked-up place — out of reach of children.
5. **DON'T FORCE TOOL.** It will do the job better and safer at the rate for which it was intended.
6. **USE RIGHT TOOL.** Don't force small tool or attachment to do the job of a heavy-duty tool. Don't use tool for purpose not intended.
7. **DRESS PROPERLY.** Don't wear loose clothing or jewelry. They can be caught in moving parts. Rubber gloves and non-skid footwear are recommended when working outdoors. Wear protective hair covering to contain long hair.
8. **USE SAFETY GLASSES.** Also use face or dust mask if cutting operation is dusty.
9. **DON'T ABUSE CORD.** Never carry tool by cord or yank it to disconnect from receptacle. Keep cord from heat, oil, and sharp edges.
10. **SECURE WORK.** Use clamps or a vise to hold work. It's safer than using your hand and it frees both hands to operate tool.
11. **DON'T OVERREACH.** Keep proper footing and balance at all times.
12. **MAINTAIN TOOLS WITH CARE.** Keep tools sharp and clean for better and safer performance. Follow instructions for lubricating and charging accessories. Inspect tool cords periodically and if damaged, have repaired by authorized service facility. Keep handles dry, clean, and free from oil and grease.
13. **DISCONNECT TOOLS.** When not in use, before servicing, and when changing accessories, such as blades, bits, cutters.
14. **REMOVE ADJUSTING KEYS AND WRENCHES.** Form habit of checking to see that keys and adjusting wrenches are removed from tool before turning it on.
15. **AVOID UNINTENTIONAL STARTING.** Don't carry plugged-in tool with finger on switch. Be sure switch is OFF when plugging in.
16. **OUTDOOR USE EXTENSION CORDS.** When tool is used outdoors, use only extension cords intended for use outdoors and so marked.
17. **STAY ALERT.** Watch what you are doing, use common sense. Don't operate tool when you are tired.
18. **CHECK DAMAGED PARTS.** Before further use of the tool, a guard or other part that is damaged should be carefully checked to determine that it will operate properly and perform its intended function. Check for alignment of moving parts, binding of moving parts, breakage of parts, mounting, and other conditions that may affect its operation. A guard or other part that is damaged should be properly repaired or

replaced by an authorized service center unless otherwise indicated elsewhere in this instruction manual. Have defective switches replaced by authorized service center. Don't use tool if switch does not turn it on and off.

19. **GUARD AGAINST ELECTRIC SHOCK.** Prevent body contact with grounded surfaces. For example; pipes, radiators, ranges, refrigerator enclosures.
20. **REPLACEMENT PARTS.** When servicing, use only identical replacement parts.

### SAVE THESE INSTRUCTIONS.

**VOLTAGE WARNING:** Before connecting the tool to a power source (receptacle, outlet, etc.) be sure the voltage supplied is the same as that specified on the nameplate of the tool. A power source with voltage greater than that specified for the tool can result in **SERIOUS INJURY** to the user — as well as damage to the tool. If in doubt, **DO NOT PLUG IN THE TOOL.** Using a power source with voltage less than the nameplate rating is harmful to the motor.

## How to use

### Switch action

To start the tool, simply pull the trigger. Release the trigger to stop.

For continuous operation without having to keep your finger on the trigger, just pull the trigger and then push in the lock button with your thumb. To stop the tool from the lock position, simply pull the trigger again and release it.

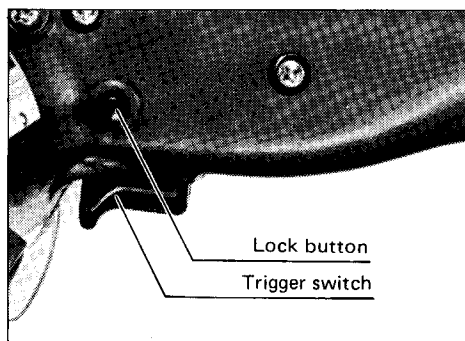


Fig. 1

### Sanding tips

Switch on the tool and let it run at top speed before applying to work surface.

Press belt only lightly upon work. Belt sander allows pinpoint sanding in close quarters. Remove side grip as in photo (Fig. 2) for tight spots.

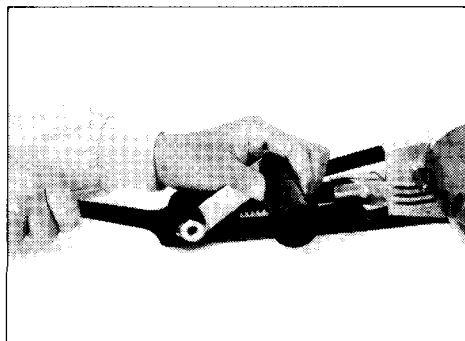


Fig. 2

### Removing & installing belt

Belt size 30 mm (1-3/16") x 533 mm (21") up to 32 mm (1-1/4") belt widths may be used.

1. Hold tool as shown in Fig. 3, pressing down on pulley to slacken belt. Then remove it.

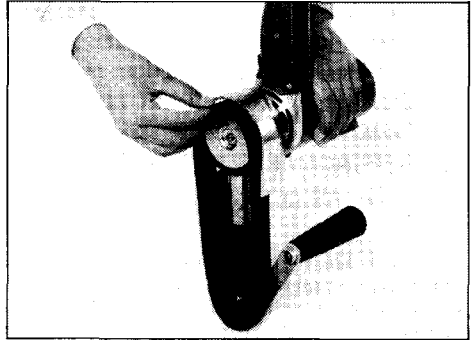


Fig. 3

2. When mounting new belt, keep arrow marks on belt and indication on pulley in same direction (Fig. 4).

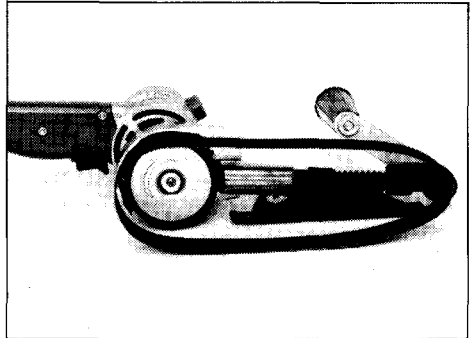


Fig. 4

3. Position the side grip as you prefer it (Fig. 5). To prolong the life of the belt, keep it running in the center of the pulley by exerting slight pressure with your hand on the grip. Pressure upon belt/workpiece surface on either side using grip will make belt move in that direction on the pulley.

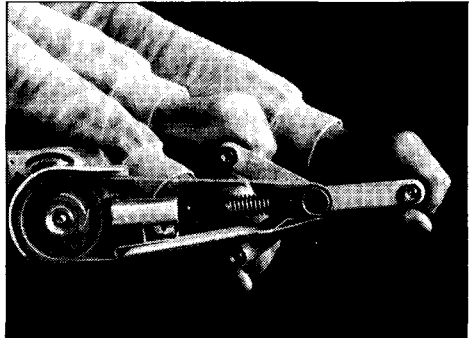


Fig. 5

## Maintenance

### Carbon brushes

Replace carbon brushes when they wear down to about 5 mm (3/16") or sparking will occur. Both brushes should be changed at the same time. Use only identical replacement parts.

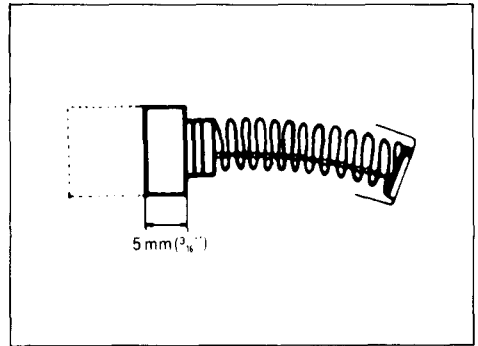


Fig. 6

### Optional accessories

CAUTION: The use of any other accessories not specified in this manual might be hazardous.

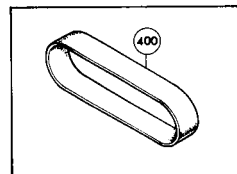
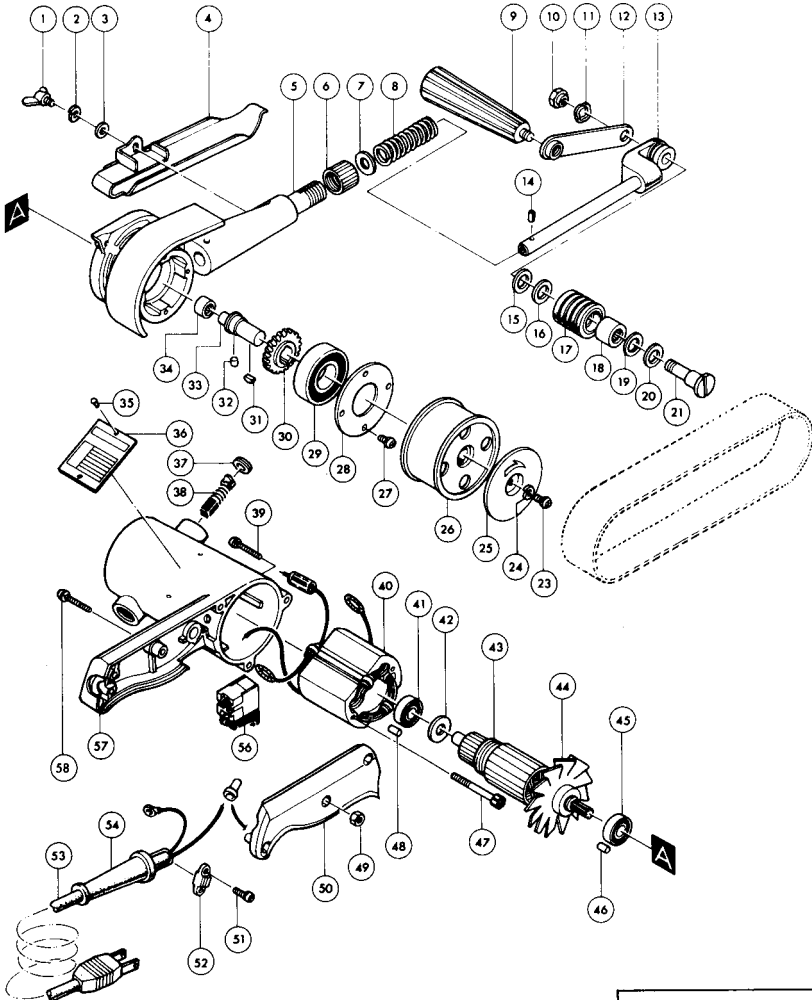
#### • Abrasive belts



AA . . . For wood, iron & steel

| Grit  | Part No. | Use    | Sheets per pack |
|-------|----------|--------|-----------------|
| AA 40 | 742301-7 | Coarse | 10              |
| AA 60 | 742302-5 |        |                 |
| AA 80 | 742303-3 | Medium |                 |
| AA100 | 742304-1 |        |                 |
| AA120 | 742305-9 | Fine   |                 |
| AA150 | 742334-2 |        |                 |
| AA240 | 742335-0 |        |                 |

# 30 mm (1-3/16") BELT SANDER Model 9030



| ITEM NO.       | NO. USED | DESCRIPTION                     | ITEM NO.         | NO. USED | DESCRIPTION                                                                                              |
|----------------|----------|---------------------------------|------------------|----------|----------------------------------------------------------------------------------------------------------|
| <u>MACHINE</u> |          |                                 | <u>MACHINE</u>   |          |                                                                                                          |
| 1              | 1        | T. Screw M5x15                  | 34               | 1        | Needle Bearing 810                                                                                       |
| 2              | 1        | S. Washer 5                     | 35               | 2        | Rivet 0-5                                                                                                |
| 3              | 1        | F. Washer 5                     | 36               | 1        | Name Plate                                                                                               |
| 4              | 1        | Flat Shoe                       | 37               | 2        | Brush Holder Cap                                                                                         |
| 5              | 1        | Gear Housing                    | 38               | 2        | Carbon Brush                                                                                             |
| 6              | 1        | Nut M16                         | 39               | 3        | P. H. Screw M4x30 (With Washer)                                                                          |
| 7              | 1        | F. Washer 12                    | 40               | 1        | FIELD ASSEMBLY<br>(With Garter Spring x 2)                                                               |
| 8              | 1        | Compression Spring 13           | 41               | 1        | Ball Bearing 627LB                                                                                       |
| 9              | 1        | Grip 32                         | 42               | 1        | F. Washer 7                                                                                              |
| 10             | 1        | H. Nut M8-17                    | 43               | 1        | ARMATURE ASSEMBLY<br>(Assembled Items 41 - 45)                                                           |
| 11             | 2        | W. Washer 12                    | 44               | 1        | Fan 62                                                                                                   |
| 12             | 1        | Arm                             | 45               | 1        | Ball Bearing 608LLB                                                                                      |
| 13             | 1        | Angle Stay                      | 46               | 1        | Rubber Pin 4                                                                                             |
| 14             | 1        | S. Pin 4-20                     | 47               | 2        | H. Bolt M4x45 (With Washer)                                                                              |
| 15             | 1        | Washer 12                       | 48               | 1        | Rubber Pin 4                                                                                             |
| 16             | 1        | F. Washer 12                    | 49               | 3        | H. Nut M4                                                                                                |
| 17             | 1        | Pulley 30-25                    | 50               | 1        | Grip Cover                                                                                               |
| 18             | 1        | Needle Bearing 1212             | 51               | 2        | P. H. Screw M4x18 (With Washer)                                                                          |
| 19             | 1        | F. Washer 12                    | 52               | 1        | Strain Relief                                                                                            |
| 20             | 1        | Washer 12                       | 53               | 1        | CORD ASSEMBLY<br>(Assembled Cord, Plug & Cord Guard)                                                     |
| 21             | 1        | Top Pulley Shaft                | 54               | 1        | Cord Guard                                                                                               |
| 23             | 1        | P. H. Screw M4x10 (With Washer) | 56               | 1        | Switch                                                                                                   |
| 24             | 1        | S. Washer 4                     | 57               | 1        | Motor Housing<br>(With Brush Holder x 2)                                                                 |
| 25             | 1        | Side Cover                      | 58               | 3        | P. H. Screw M4x25 (With Washer)                                                                          |
| 26             | 1        | Pulley 33-64                    | <u>ACCESSORY</u> |          |                                                                                                          |
| 27             | 4        | P. H. Screw M4x12 (With Washer) | 400              | 1        | Abrasive Belt Set<br>(Assembled Abrasive Belt, 533-40, 533-60,<br>533-80, 533-100 & 533-120 each 2 pcs.) |
| 28             | 1        | Bearing Retainer 48             |                  |          |                                                                                                          |
| 29             | 1        | Ball Bearing 6004LB             |                  |          |                                                                                                          |
| 30             | 1        | Helical Gear 45                 |                  |          |                                                                                                          |
| 31             | 1        | Woodruff Key 3                  |                  |          |                                                                                                          |
| 32             | 1        | Pin 4.5                         |                  |          |                                                                                                          |
| 33             | 1        | Driving Shaft                   |                  |          |                                                                                                          |



## MAKITA LIMITED ONE YEAR WARRANTY

### Warranty Policy

Every Makita tool is thoroughly inspected and tested before leaving the factory. It is warranted to be free of defects from workmanship and materials for the period of ONE YEAR from the date of original purchase. Should any trouble develop during this one-year period, return the COMPLETE tool, freight prepaid, to one of Makita's Factory or Authorized Service Centers. If inspection shows the trouble is caused by defective workmanship or material, Makita will repair (or at our option, replace) without charge.

This Warranty does not apply where:

- repairs have been made or attempted by others;
- repairs are required because of normal wear and tear;
- The tool has been abused, misused or improperly maintained;
- alterations have been made to the tool.

IN NO EVENT SHALL MAKITA BE LIABLE FOR ANY INDIRECT, INCIDENTAL OR CONSEQUENTIAL DAMAGES FROM THE SALE OR USE OF THE PRODUCT. THIS DISCLAIMER APPLIES BOTH DURING AND AFTER THE TERM OF THIS WARRANTY.

MAKITA DISCLAIMS LIABILITY FOR ANY IMPLIED WARRANTIES, INCLUDING IMPLIED WARRANTIES OF "MERCHANTABILITY" AND "FITNESS FOR A SPECIFIC PURPOSE," AFTER THE ONE-YEAR TERM OF THIS WARRANTY.

This Warranty gives you specific legal rights, and you may also have other rights which vary from state to state. Some states do not allow the exclusion or limitation of incidental or consequential damages, so the above limitation or exclusion may not apply to you. Some states do not allow limitation on how long an implied warranty lasts, so the above limitation may not apply to you.

**Makita Corporation**

3-11-8, Sumiyoshi-cho,  
Anjo, Aichi 446 Japan

883069A069

PRINTED IN JAPAN

1991 — 8 — N