

# X4-LIFE



GB

## Wireless designer doorbell

Instruction manual

Art.-Nr. 701349



Information on this user manual .....	23
Liability .....	23
Designated use .....	24
General notes.....	24
Service .....	25
Importer.....	26
Signal Words.....	26
Safety guide .....	27
Location .....	29
Cleaning and maintenance.....	29
Specifications.....	30
Box contents .....	31
Connection and setup.....	32
Activating the doorbell .....	34
Synchronisation .....	36
Adjust signal type .....	36
Sound volume .....	37
Selecting a melody .....	37
Name tag.....	37
Mounting the transmitter .....	38
Attaching the receiver .....	39
Disposal.....	40

We are pleased that you have decided to buy our product and wish you an enjoyable and successful use.

### Information on this user manual

This user manual contains important information for the safe use of the product. Therefore, for your own safety and for a successful use, please read this user manual completely before assembling and using the product.

Please keep this operating manual for reference. If you pass on the product to anyone else, please hand over the operating manual as well.

### Liability

We do not accept liability for any damage to property or for personal injury that is due to improper use or failure to follow the instructions in this operating manual and the safety advice. In such cases any claim under the guarantee is null and void!

## Designated use

The product is used as a door bell with wireless transmission.

The designated use is defined by the instruction manual and in following the appliance and the warnings mentioned in this user manual.

This product is not suitable for commercial usage.

## General notes

All mentioned company and product names are registered trademarks under the rights of their owners. © All rights reserved.

No liabilities will be taken for damages or claims resulting out of not reading and/or not following the user guide and/or any form of modification on or in the product. Under these circumstances, no warranty services will be given. Liability cannot be taken for consequential damages.

The contents of this user manual may differ from the product. If so, please consult additional manuals in the packing. Keep this user manual in a safe place. If you give this product away to a third party, make sure that you also pass on the user

manual. The CE conformity has been declared and proven, and the corresponding documents have been deposited with the manufacturer. For the reason of safety and CE-licensing it is not allowed to modify this unit in any way and/or use it for functions, other than the designated use.

## Service

Service address	lived non food GmbH TOR 8 – 9 Donaustraße 20 D-38120 Braunschweig
Phone	+49 (0) 531 224356-82
E-Mail	service@x4-life.de
Internet	www.x4-life.de

## Importer

Address	lived non food GmbH Donaustraße 20 D-38120 Braunschweig
E-Mail	info@lived-non-food.de
Internet	www.lived-non-food.de

## Signal Words



**DANGER**

**High risk!**

Disregard of this regulation may result in danger to life or physical condition.



**WARNING**

**Medium risk!**

Disregard of this regulation may cause material damage.



## CAUTION

**Low or no risk!**

Facts to follow for the designated use of this product.

### Safety guide

Please read the safety guide before using the product. This information is for your safety and the protection of the device and devices connected. You will also find specific safety instructions in the following chapters of this user manual.

---



## DANGER

**High risk for children and other groups of people!**

Inappropriate handling may lead to injuries or material damage.

This product is not a toy and should not be handled by infants and small children. Children cannot assess the dangers connected with electrical devices. Do not leave the packaging material lying around. Children might play with the plastic bags and risk suffocation.

---

This product is equipped with an integrated battery. Batteries are no toys and should not be handled by infants and small children. Leaking or damaged batteries can cause acid burns or etchings on the skin.



**DANGER**  
**Danger of electrical shock!**

This device should only be opened and/or repaired by an expert or a person who is qualified to do so. Only original spare parts may be used.



*If you have any doubts on the function or further questions, please contact your local dealer or our service center.*



**WARNING**  
**Misuse may cause risk of damage.**  
**Incorrect use of the device may lead to damages.**

- The product complies with the standards of protection class IP44 and is protected against water. It must not be immersed in water, however.
- Keep this product away from direct water, dampness and high humidity. Keep this product away from vessels containing liquids, e.g., buckets, vases or plants.
- Do not use this device in a tropical humid climate. If the product is brought in from the cold to a warm area (e.g., during transport), condensation can occur within the unit. Let the device reach room temperature, before you use it.



- The product may not be subjected to extreme heat or cold.  
Do not expose the product to intense sunlight, open fire or other heat sources:  
Working temperature: -30°C to 40°C

## Location



### **DANGER**

**Disregarding can cause material damage. Inappropriate placement can damage the product and its components.**

Considering the large number of different types of varnishes and polishes used for furniture, it is possible that the device's feet will leave visible residue on the furniture as a result of a chemical reaction. The product should therefore not be placed on the surfaces of furniture without suitable protection.

## Cleaning and maintenance



### **DANGER**

Always use a soft, dry and lint-free cloth to clean the unit's exterior. If the device is extremely dirty you can use a soft cloth, dampened with water or a mild cleaning solution to clean.

Never use any abrasive or harsh cleaning agents (e.g. alcohol, petrol or thinners) as these could damage the controls, casing or any markings and labels found on the device.

## Specifications

Frequency	433 MHz
Protection transmitter	IP44
Power supply transmitter	1x 3 V Batteries (CR2032)
Power supply receiver	2x 1.5 V Batteries (AA, L6/LR6)
Melodies	36
Reach	max. 80 m (Free-field range)
Dimensions Transmitter	80 x 21 x 32 mm
Weight transmitter	31 g
Dimensions receiver	76 x 110 x 34 mm
Weight Receiver	81 g

## Box contents

Receiver

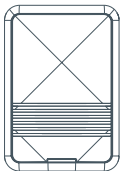
Transmitter

1x CR2032 Battery

2x 1.5 V AA Batteries

Adhesive tape

User manual



Receiver



Transmitter



Batteries



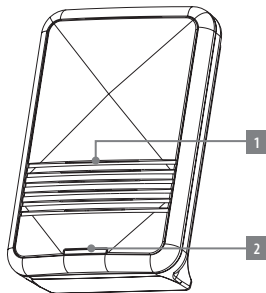
Adhesive tape



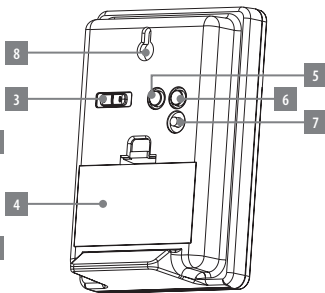
User manual

## Connection and setup

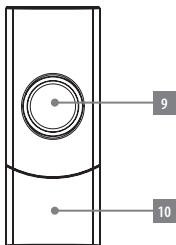
1.	speaker
2.	LED display
3.	signal switch (acoustic/visual)
4.	battery covering
5.	volume control
6.	melody select
7.	receiver synchronization button
8.	receiver attachment notch
9.	bell push
10.	name tag covering
11.	panel retainers
12.	mounting bracket holes



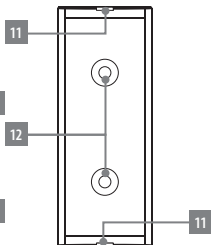
Receiver front



Receiver back



Transmitter front outside



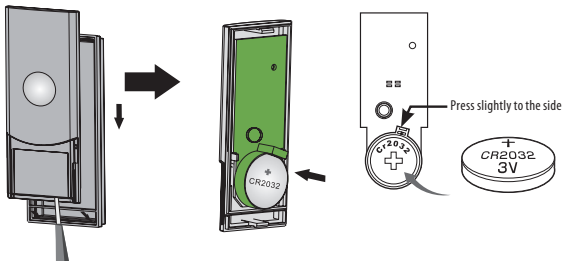
Transmitter back inside

## Activating the doorbell

### Insert battery (transmitter)

The transmitter requires a 3 volt battery CR2032.

- Push a flat object into the retainer aperture.
- Insert the battery into the battery compartment with the positive pole (+) pointing upwards. Push the battery down gently until you can hear it latch into the retainer.
- Hook the retainer of the covering into the notch and click the covering onto the supporting plate until you can hear it latch.

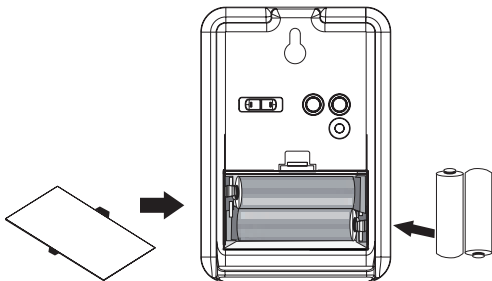


## Insert batteries (receiver)

The receiver requires two 1.5 volt batteries (AA, L6/LR6).

Push down the retainer using your fingernail and remove the covering.

Insert batteries. Remember the polarity! The negative pole points to the spring.



Insert the batteries and close the cover

## Synchronisation

After inserting batteries for the first time or after changing the batteries, the transmitter and receiver might have to be synchronized. After changing the batteries, the function has to be tested. If there is no signal, synchronize as follows:

- Press the transmitter button on the receiver.
- Press the bell push on the transmitter. The selected melody plays and/or the LED display on the receiver flashes. Now the transmitter and receiver are synchronized.
- You may synchronize up to 5 more transmitters on the same frequency with the receiver. Press button 7 on the receiver and the synchronization button on the transmitter.

## Adjust signal type

The receiver displays the signal visually, acoustically or both. Select one of the three positions:

1. acoustic signal only, the selected melody plays
2. visual signal, the LED display flashes
3. acoustic and visual, the selected melody plays and the LED display flashes



## Sound volume

Push button 5 for the desired volume:

- loud
- medium
- low

## Selecting a melody

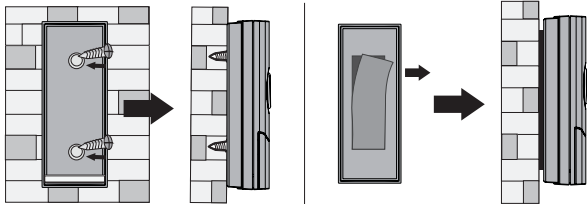
Choose from 36 melodies. Push button 6 until the desired melody plays.  
The last played melody will be saved.

## Name tag

Remove the covering of the name tag frame by pulling it. Stick on the name tag (not included) and put the covering back in its place.

## Mounting the transmitter

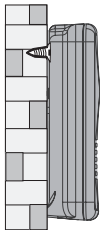
Find a suitable place near your front door. You may either adhere the transmitter (note that the adhesive tape might damage the surface of the area you attach the transmitter to) or screw it onto the desired place. For screw fixing, use the two drill holes on the mounting plate (they are not completely drilled through).



## Attaching the receiver

The receiver is designed that it can be placed on a flat, non-slip surface.

The receiver can be mounted to a wall by using a nail or screw (screw head max. 7 mm) with the attachment notch (8).



## Disposal

### **Electrical- and electronic devices must never be disposed of in the regular household waste!**



Consumers are legally obligated and responsible for the proper disposal of electronic and electrical devices by returning them to collecting sites designated for the recycling of electrical and electronic equipment waste. For more information concerning disposal sites, please contact your local authority or waste management company.

### **Do not throw batteries and rechargeable batteries into the household waste!**



Customers are legally obliged to return used and rechargeable batteries, whether they contain harmful substances\* or not, designated disposal sites or collecting sites in shops selling batteries. By doing so you are contributing to a better and cleaner environment.

\* Identification mark Cd= Cadmium; Hg= Quecksilber; Pb= Blei

**lived non food GmbH,  
alle Rechte vorbehalten.**

Es wird keinerlei Haftung für Änderungen oder Irrtümer zu den in dieser Bedienungsanleitung beschriebenen technischen Daten oder Produkteigenschaften übernommen.

Alle Rechte vorbehalten. Jegliche Vervielfältigung, Übertragung, Abschrift oder Speicherung dieser Anleitung oder Teilen davon, sowie dessen Übersetzung in eine Fremdsprache oder eine Computersprache sind ohne die ausdrückliche Genehmigung des Herstellers nicht gestattet.

Aufgrund der schnellen Weiterentwicklung der Produkte kann keine Garantie auf Vollständigkeit übernommen werden. Änderungen an Technik und Ausstattung sind jederzeit vorbehalten.

Wenn Sie die Bedienungsanleitung in digitaler Form benötigen, wenden Sie sich bitte an unseren Service:

E-Mail: [service@lived-non-food.de](mailto:service@lived-non-food.de)

Telefon: +49 531 224356-82

**lived non food GmbH,  
all rights reserved.**

No liability will be taken for modifications or mistakes regarding the technical data or product features described in this user manual.

All rights reserved. Any reproduction, transfer, duplication or filing of this user manual or parts of it, as well as the translation into a foreign language or computer language is prohibited without the explicit approval of the manufacturer.

Due to the fast advancement of these products, no guarantee of completeness can be given. Modifications in technique and configuration are subject to change at any time.

To receive a digital copy of this user manual, please contact our service department:

E-Mail: [service@lived-non-food.de](mailto:service@lived-non-food.de)

Phone: +49 531 224356-82

X4-LIFE